

# Learning Partners Support Staff INSET

February 19th 2024

# BETTER TOGETHER



Learning Partners

academy trust

# Welcome from Jack Mayhew, CEO

Dear Colleagues

It gives me great pleasure to address you today and to write a few words in our Trust INSET brochure. Learning is not only an activity we support our children with, it is a core activity for all of us across the organisation. Our conference is a centrepiece of this work and I hope that you will all use today to recharge, refresh and reconsider all aspects of our practice to ensure we continue to provide the best for the children we serve.



Jack Mayhew  
CEO

As last year, we gather across three locations: primary, secondary and support staff. Due to our size and professional learning demands this makes sense. I know you will find much to stimulate your minds and impact upon your work in the coming weeks and months. My thanks to the many colleagues who have assisted in making today a worthwhile and memorable experience. Our presenters, colleagues from the central team and a myriad of work has taken place at each of our three sites. As we mark this halfway point in the school year, it is beneficial to connect to one another and explore the collaboration opportunities to make a greater difference to our children and the communities we serve.

We acknowledge that society is leaning on schools to a greater extent than ever before. Our work faces more pressures, and it is pleasing to be part of a trust that supports each other at these times. We all need to constantly examine how we can be better. Better informed, better supported and better balanced in our work to deliver effectively for the students. We are after all 'better together'.

Enjoy the day. Believe in better and believe in each other.

# Programme of Events

Please bring a pen and a pad for the day, if you wish to make notes.



Parking at Guildford County School is very limited. Please lift share where possible.

Registration will take place at the main entrance, followed by tea/coffee in the Dining Hall.

Make your way to the Mayhew Theatre for the Introduction by Patrick Overy & Jack Mayhew.

Remaining in the Theatre, you will receive the Keynote Address and a Workshop from our speaker Kelly Hannaghan.

It's time to attend your chosen workshop. You will have been emailed confirmation on which one you're attending, and the room locations are detailed in the maps below.

Lunch will be held in the dining hall and to maximise the networking opportunity, the seating will be arranged according to job function. Your table number will be written on your name badge.



# KEYNOTE SPEAKER

## **Kelly Hannaghan - Mental Health and Wellbeing Consultant**

Upon meeting Kelly there is no mistaking what she is passionate about, she is a bundle of energy, dedicated to the wellbeing of everyone in education communities.

Her philosophy enables staff, students and families to speak honestly and openly about their wellbeing experiences.

Kelly is a Mental Health and Wellbeing Consultant and has spent her professional career passionately focussing on enhancing the opportunities and life chances of people in education. Through the power of her mental health training and therapeutic relationship skills, she has successfully led a school on the Wellbeing Award for Schools process. Kelly is an active speaker, blogger and writer of wellbeing in education and is passionate about creating the conditions under which teachers, pupils and families flourish.

Kelly will be providing our Keynote Address and a plenary workshop which has been specifically built for our Learning Partners Team around the conference theme of Resilience.

# Room Plan - Chosen Workshops

| Room    | Presenter           | Workshop                                      |
|---------|---------------------|---|
| C5      | Katy Mansell        | Excel - Level 1                               |
| B1      | Patrick Overy       | Excel - Level 2                               |
| C6      | Sarah Allen         | Excel - Level 3                               |
| C10     | Sally Cave          | Health & Safety Essentials - Risk Assessments |
| C9      | Nicola Riley        | Managing Stress                               |
| C11     | Jodie Farrell-Gray  | Microsoft Team                                |
| Theatre | Kate Charles & Team | Understanding & Managing Conflict             |

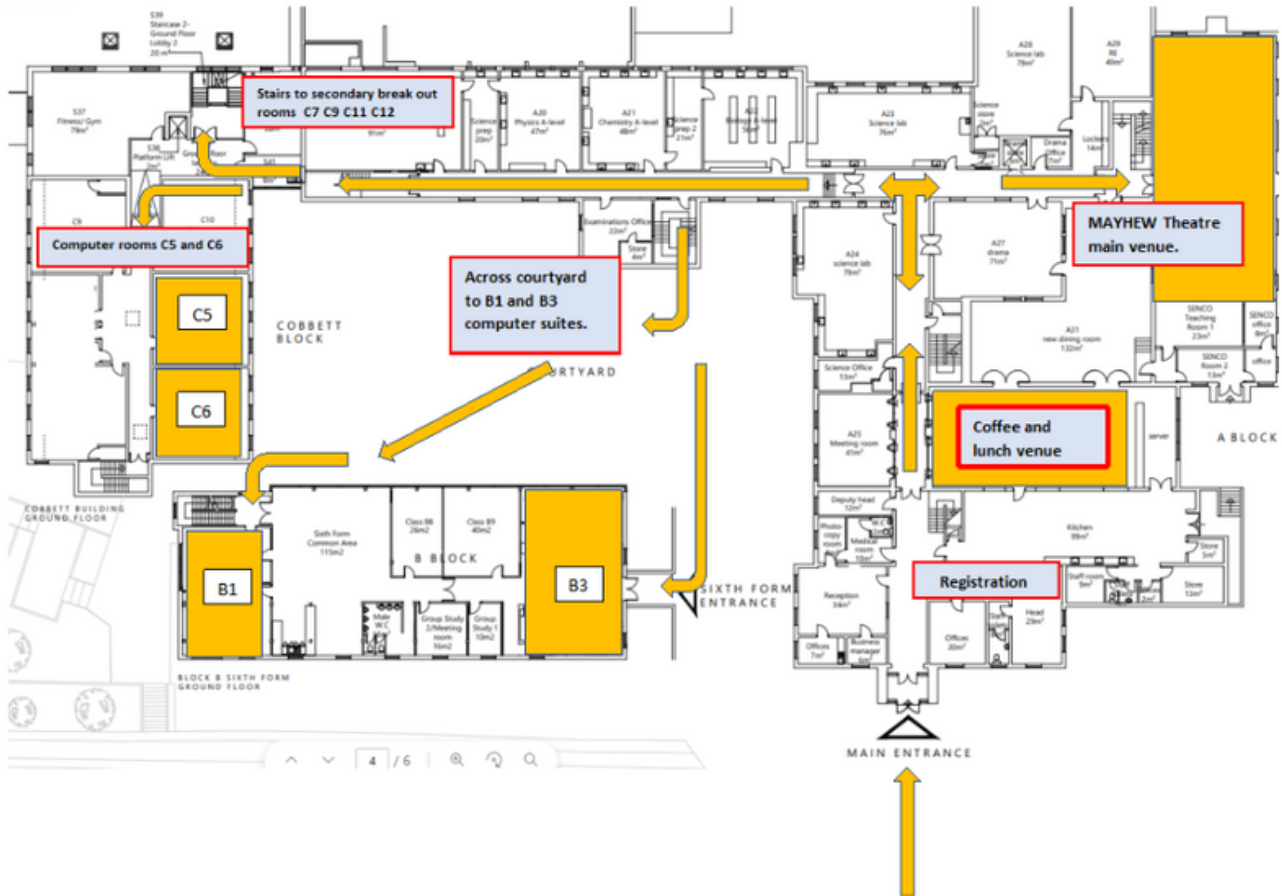


**Car parking (87 cars capacity): Gates and barrier will be open**

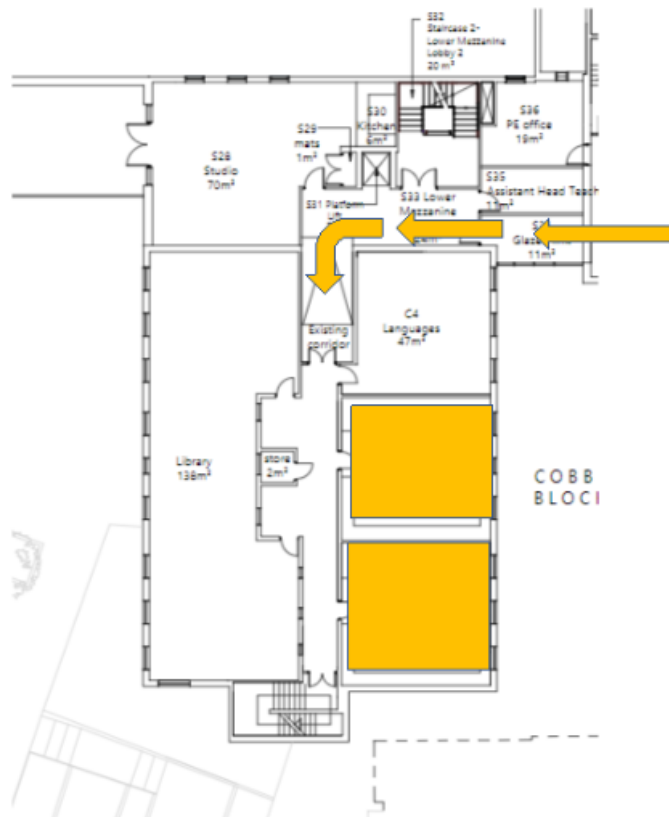
**Please, once you've parked, follow the red arrows on the map below and enter via **Main reception to register.****

School Address - Guildford County School, Farnham Rd, Guildford GU2 4LU



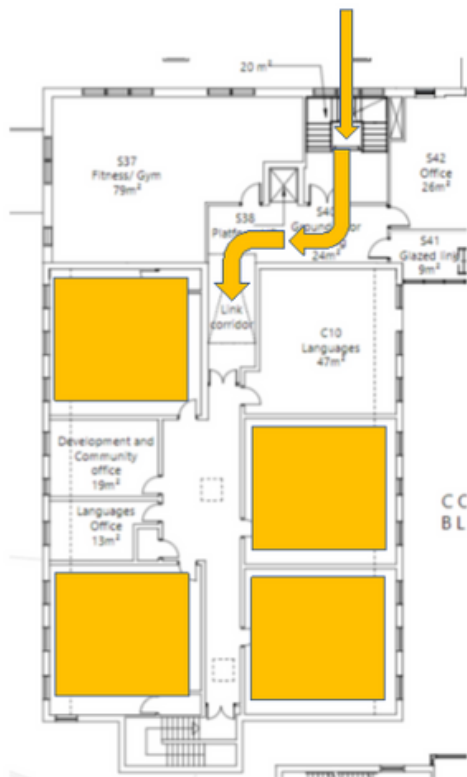


Follow staircase to **1<sup>st</sup> Floor** and follow map below for C5 C6 computer rooms





Follow staircase to **very top** and follow map below for C7 C9 C11 C12



# Fire Evacuation Procedure



## **FIRE EVACUATION PROCEDURE**

Should the alarm sound please make your way to the MUGA & congregate at your allocated area - see map on following page.  
The Fire Officer that will take the register will be as follows:

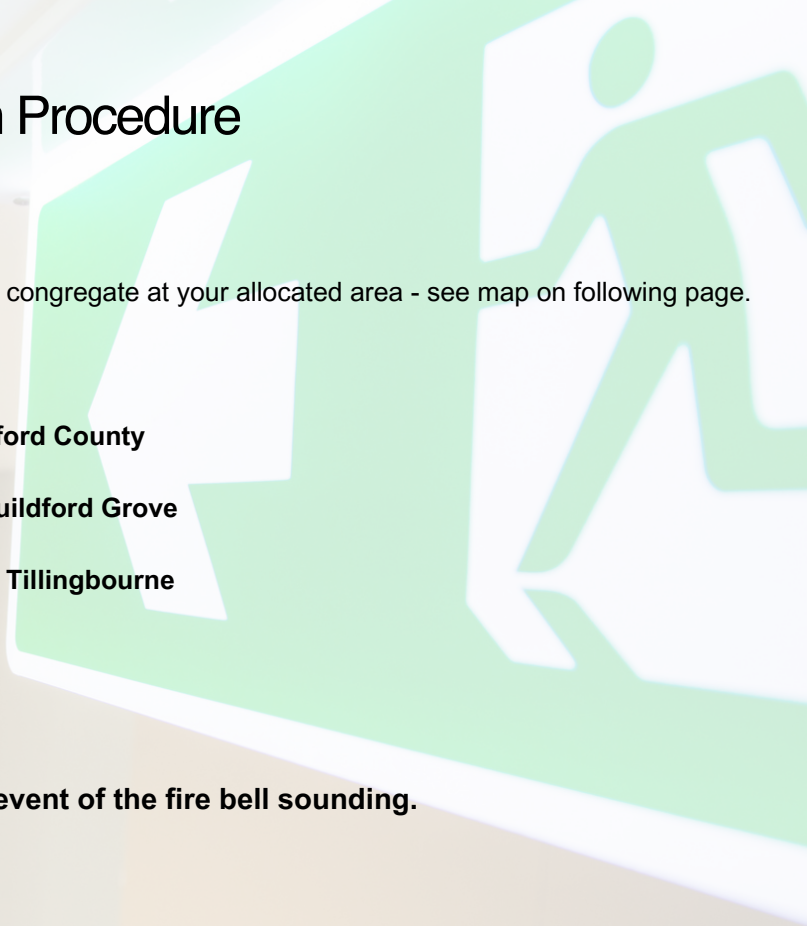
**Lynsey Filby - Sandfield, George Abbot, Fullbrook & Guildford County**

**Patrick Overy - Glebelands, Kings College, Box Grove & Guildford Grove**

**Jodie Farrell-Gray - Loseley Fields, Shalford, Northmead & Tillingbourne**

**Nicola Riley - Burpham, Pirbright, Stoughton & Moss Lane**

**Please see map below of where to congregate in the event of the fire bell sounding.**







Learning Partners

academy trust