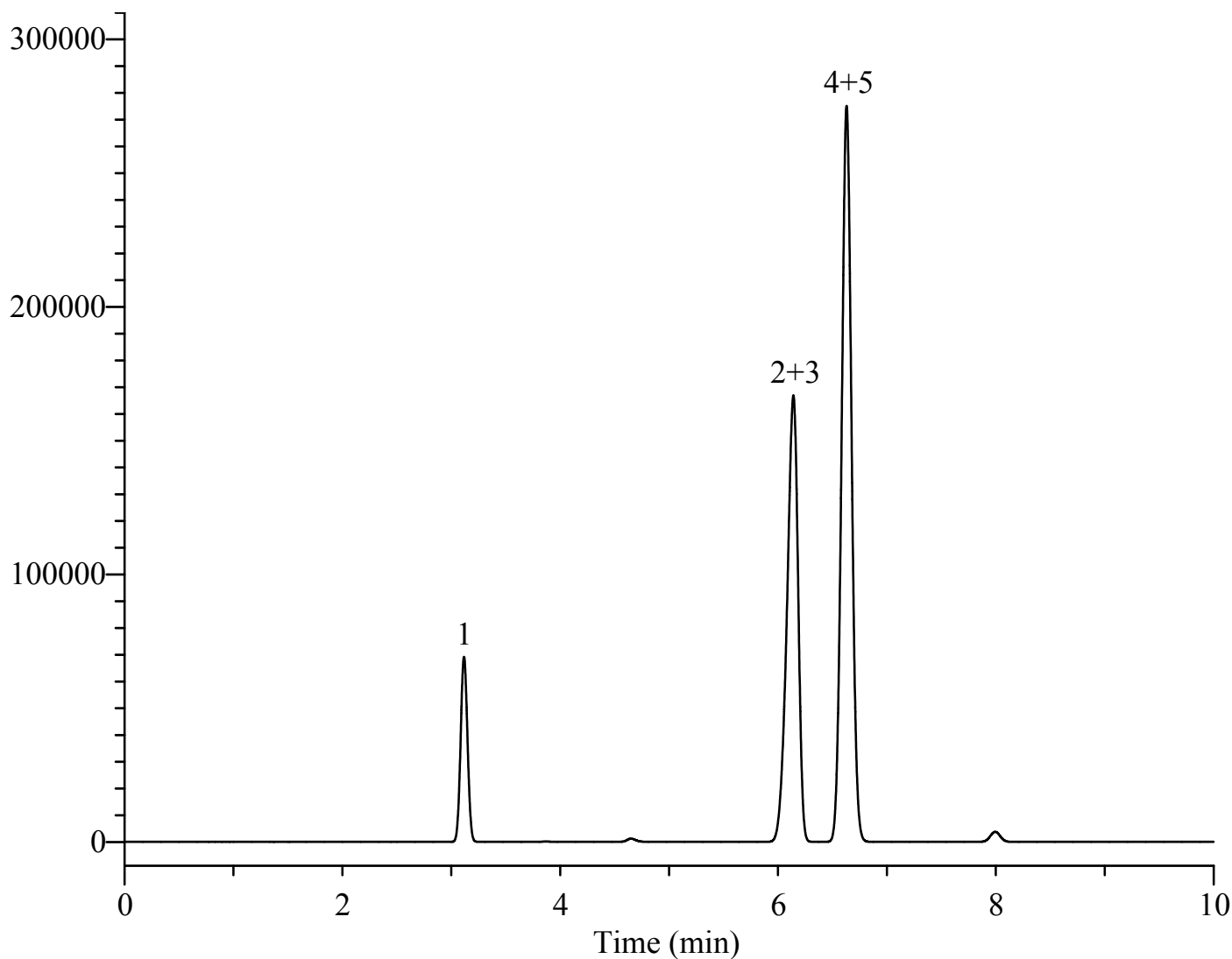


# InertSearch™ for GC

InertCap® Applications

## Residual solvents in pharmaceuticals Class1

Data No. GA125-0850



### Conditions

<b>System</b>	: GC/FID	<b>Analyte</b>	:
<b>Column</b>	: InertCap 5 0.53 mm I.D. x 30 m df = 5.0 µm	1. 1,1-Dichloroethylene	
<b>Col. Cat. No.</b>	: 1010-18449	2. 1,1,1-Trichloroethane	
<b>Col. Temp.</b>	: 40 °C - 5 °C/min - 90°C	3. 1,2-Dichloroethane	
<b>Carrier Gas</b>	: He 20 kPa	4. Benzene	
<b>Injection</b>	: Split flow 200 mL/min 240 °C	5. Carbon tetrachloride	
<b>Detection</b>	: FID Range 10 <sup>2</sup> 240 °C		
<b>Sample Size</b>	: Mixed evenly 0.5 µL		