



**Orbridge** travel 2024

Quito 6799 KM

Cairo 10982 KM

Catania 9651 KM

Florence 8886 KM

Edinburgh 7190 KM

Ulaanbaatar 8380 KM

Verona 8714 KM

Barcelona 8715 KM

Sitka 1357 KM

Calgary 1097 KM

Jackson 1024 KM

Manitoba 1792 KM

Las Vegas 1827 KM



# Embark upon your next adventure...

Dear Alumni and Friends,

Travel is truly an enriching part of our lives. It allows us to connect with new worlds, new friends, and each other.

We're excited to present to you the following 2024 educational travel programs. Every trip has been carefully curated, so you can enjoy the best each has to offer. Group sizes are intimate for maximum enjoyment by all. And because you're traveling with fellow alums, you have a bond between you before you set foot on a plane. And one that is surely strengthened by the time you return home.

Here are a few of the highlights you can expect...

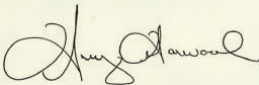
**Convenience.** Our experience pays off. Every detail is planned out and taken care of for you. All you have to do is pack your bag. The hard part will be selecting a trip.

**Educational Enrichment.** All trips include educational content and are accompanied not only by knowledgeable expedition leaders or travel directors, but also expert local guides who will enhance each journey.

**Camaraderie.** Once you experience an alumni trip, you will find that there is nothing better than connecting with and sharing your travel experiences with fellow graduates.

For complete program details call **(866) 639-0079** or visit **[usna.orbridge.com](http://usna.orbridge.com)**. We hope to see you soon!

Sincerely,



Amy Garwood

Director, Alumni Travel

U.S. Naval Academy Alumni Association & Foundation

(410) 295-4015

*Welcome to all alumni, friends, and family.*

## **DESTINATIONS**

United States — p 3-8

Canada — p 9-10

Europe — p 11-12

South America — p 13-16

Africa — p 17-18





\* Find out more: [usna.orbridge.com](http://usna.orbridge.com) \*





# Death Valley, Yosemite and the Great Parks of California

OCTOBER 4-11, 2024 (optional: Monterey to Santa Barbara post-tour Oct. 11-14, 2024)

Survey the dramatic landscapes of four of California's national parks as nature testifies to its size, beauty, and diversity.



## Program Highlights

- Experience the diverse wonders of four West Coast national parks accompanied by an Orbridge Expedition Leader.
- Observe terrestrial spectacles in Death Valley, the largest national park outside of Alaska.
- Visit Badwater Basin, an otherworldly landscape of crinkly salt flats, and enjoy pristine views of thousands of stars in the nighttime sky.
- Honor and preserve the memory of thousands of Japanese Americans who faced internment during World War II at Manzanar National Historic Site.
- Delight in extended exploration at Yosemite National Park, a varied landscape supporting more than 400 species of amphibians, reptiles, birds, and mammals.
- Spend time at Sequoia and Kings Canyon National Parks that are teeming with endless natural features, including General Sherman—a giant sequoia tree soaring 275 feet into the blue Sierra sky.

## What's Included:

7 nights accommodations in inspiring hotels and lodges. 7 breakfasts and 4 dinners, plus special welcome reception. Full guiding services of an Orbridge Expedition Leader as well as local expert guides. All activities as described in the 8-day itinerary. Admission and park fees. Private deluxe motor coach with air conditioning and comfortable seating. Luggage portage. Gratuities to Orbridge Expedition Leader, local guides, drivers, porters, and wait staff for included meals. Airport transfers for guests arriving and departing during the suggested times.

## Your 8-Day Itinerary

- Day 1:** Arrive in Las Vegas, NV (R)
- Day 2:** Las Vegas / Death Valley National Park (B,D)
- Day 3:** Death Valley National Park (B,D)
- Day 4:** Death Valley National Park / Mammoth Lakes (B)
- Day 5:** Mammoth Lakes / Yosemite National Park (B,D)
- Day 6:** Yosemite National Park (B)
- Day 7:** Yosemite National Park / Sequoia and Kings Canyon National Parks (B,D)
- Day 8:** Fresno / Depart Fresno (B)

**Optional 4-Day Post-Tour:**  
Monterey to Santa Barbara

Special Rate:	Single:
<b>\$4,995</b>	<b>\$6,795</b>

.....  
Monterey to Santa Barbara Post-Tour

Special Rate:	Single:
<b>\$1,495</b>	<b>\$1,995</b>

Dates, Rates, and Itinerary subject to change.







# Discover Denali National Park

JUNE 9-14, 2024

A journey into the scenic wilds of America's most northern state through Alaska's rugged forest and wildlife.



## Program Highlights

- Be on the lookout for vast wildlife including moose, Dall sheep, eagles, wolves, migrating caribou, and grizzly bears.
- Familiarize yourself with Denali National Park, walking its trails with naturalists nearby.
- Enjoy a special dinner including a presentation by a Murie Science & Learning Center educator.
- Listen to an Alaskan homesteader's tale of summitting Denali.
- Admire the rugged forests and wildlife with superior viewing from your upgraded GoldStar glass dome seat aboard the Alaska Railroad.

## What's Included:

5 nights hotel and lodge accommodations. 5 breakfasts, 3 lunches, 2 dinners, and 2 receptions. Rail transport to/from Denali National Park. Hotel courtesy shuttle between Grande Denali Lodge, the Denali Park Visitor Center, town, and the rail depot. A full-day guided wilderness tour into Denali National Park (including a box lunch). A lively dinner event with a special presentation from a Murie Science and Learning Center educator, plus an engaging discussion with Jimmie Hendricks, a colorful local who will share his experiences of homesteading and eventual summitting of Denali. Deluxe motor coach transport to Talkeetna and Anchorage. Anchorage Museum Tour and visit to the town of Talkeetna. Transport aboard the distinguished Alaska Railroad with reserved seating in the upper-level glass-dome car, priority seating in the dining room and two complimentary alcoholic and unlimited non-alcoholic beverages. Services of an Orbridge Expedition Leader. Gratuities for Orbridge Expedition Leader, local guides, drivers, porters, housekeeping, and wait staff for included meals. Airport transfers for guests arriving and departing during the suggested times.

## Your 6-Day Itinerary

- Day 1:** Arrive in Fairbanks, AK (R)
- Day 2:** Fairbanks / Alaska Railroad  
Denali National Park (B,L,D)
- Day 3:** Denali National Park Wilderness  
Excursion (B,L)
- Day 4:** Denali National Park (B,R)
- Day 5:** Denali National Park / Talkeetna  
Anchorage (B,L,D)
- Day 6:** Anchorage / Depart Anchorage (B)

## Optional Excursions:

- DogGoneIt Dog Sled Tour
- Denali Glacier Landing Flight
- Arctic Circle Flight Tour

Special Rate:  
**\$3,995**

Single:  
**\$5,295**

Dates, Rates, and Itinerary subject to change.







# Discover Southeast Alaska

AUGUST 2-9, 2024 (optional: Denali National Park pre-tour July 28 - Aug. 2, 2024)

Discover the awesome beauty, abundant wildlife, and native cultures of Southeast Alaska with experts by your side.



## Program Highlights

- See the spray of whales only yards away and venture into secluded inlets as you get up close to nature, whether from the decks of the *Chichagof Dream* or aboard its skiffs and kayaks.
- Accompanied by expert naturalists, including an Orbridge Expedition Leader, learn surprising details about animal behavior, glacier activity, and the wealth of natural spectacles along these protected waters.
- Learn about Alaska's culture and living history during a Native dance performance at a Tlingit Clan House.
- Visit a salmon hatchery, the Alaska Raptor Center, and Sitka National Historical Park.
- Take a guided tour of the Norwegian fishing community of Petersburg.
- Cruise around the pristine waters of Glacier Bay National Park and Preserve to see the sanctuary's deep fjords, tidewater glaciers, and snow-capped mountain ranges.
- Meet a National Park Ranger for a guided walk during your visit to Glacier Bay National Park.

## What's Included:

7 nights aboard the *Chichagof Dream*. All onboard hand-crafted meals: 7 breakfasts, 6 lunches, and 7 dinners—including a special Captain's Farewell Dinner, and complimentary wine and beer at dinner. An onboard lecture program and educational guidance of two expert naturalists, including an Orbridge Expedition Leader, and a walk guided by a Park Ranger during your visit to Glacier Bay National Park. Guided kayaking, hiking, walking, skiff excursions, and wildlife viewing. All port fees and entry fees to parks, preserves, museums, attractions, and special excursions as described in the itinerary. Gratuities for Orbridge Expedition Leader, airport transfer drivers, and drivers/guides on included land excursions. Airport transfers for guests arriving and departing during the suggested times.

## Your 8-Day Itinerary

- Day 1:** Arrive in Sitka – Embarkation (D)
- Day 2:** Icy Strait (B,L,D)
- Day 3:** Glacier Bay National Park (B,L,D)
- Day 4:** Eastern Baranof Island / Lake Eva (B,L,D)
- Day 5:** Eastern Baranof Island / Hidden Falls (B,L,D)
- Day 6:** Petersburg / Frederick Sound (B,L,D)
- Day 7:** Tracy Arm Fjord (B,L,D)
- Day 8:** Auke Bay / Juneau – Disembarkation / Depart Juneau (B)

### Optional 6-Day Pre-Tour:

Denali National Park

Special Rates from:	Single from:
<b>\$5,395</b>	<b>\$10,495</b>

.....  
Denali Pre-Tour

Special Rate:	Single:
<b>\$3,295</b>	<b>\$4,595</b>

Dates, Rates, and Itinerary subject to change.









# Polar Bears of Churchill

OCTOBER 21-26, 2024

Much like the bears themselves, visitors make their way to Churchill each fall. Their reward: unforgettable experiences of a lifetime.



## Program Highlights

- Begin in Winnipeg with a private reception and three-course welcome dinner at Assiniboine Park Zoo along with a presentation on polar bears.
- Learn about Churchill's unique ecosystem at the Churchill Northern Studies Centre.
- Enjoy two full-day expeditions aboard a custom-designed Arctic Crawler™—a specially designed trekking vehicle, featuring comfortable seating, on-board facilities with flush toilet, large windows that lower for better viewing, and a spacious, fully grated outside rear deck for optimal photography opportunities.
- Discover the cultural history of this region during a guided tour through the Itsanitaq Museum and a talk with a Parks Canada ranger.
- Meet an energetic team of sled dogs and their experienced handler, then bundle up for an exciting dog sled experience.

## What's Included:

5 nights in ideally-situated and comfortable accommodations. Round-trip airfare between Winnipeg and Churchill. 5 breakfasts, 3 picnic-style lunches, and 4 dinners, including a special welcome reception and dinner. Full guiding services of an Orbridge Expedition Leader and a local naturalist. All excursion transportation and entry fees. All gratuities. Airport transfers for guests arriving and departing during the suggested times.

## Your 6-Day Itinerary

- Day 1:** Arrive in Winnipeg, Manitoba, Canada (R,D)
- Day 2:** Winnipeg / Flight to Churchill / Northern Studies Centre / Parks Canada Interpretive Centre (B,L-aloft,D)
- Day 3:** Churchill / Arctic Crawler Experience (B,L)
- Day 4:** Churchill / Cultural and Heritage Tour / Itsanitaq Museum / Dog Sledding (B,D)
- Day 5:** Churchill / Arctic Crawler Experience / Flight to Winnipeg (B,L,D)
- Day 6:** Winnipeg / Depart for U.S. (B)

Special Rate:

**\$7,995**

Single:

**\$10,995**

Dates, Rates, and Itinerary subject to change.







No Single Supplement\*



# Cruise the Danube by Luxury River Ship

SEPTEMBER 17-25, 2024

Explore the historical highlights of Central Europe's most glorious cities from Passau to Budapest with options to golf along the way.



## Program Highlights

- Enjoy 7 nights deluxe accommodations onboard *Amadeus Riva*, an ultra-modern, environmentally friendly, premium river ship.
- Gather a wealth of history during informative, guided walking tours of the old city of Passau, Austria's state capital of Linz, and beautiful Budapest.
- Delight in the treasures of Melk Abbey—from the view afforded by the expansive terrace to the frescoes, tapestries, and gilded pieces inside.
- Tour a vineyard and winery in the Wachau Valley, and savor a variety of wines from the region.
- Learn about Vienna's highlights via scenic drives and leisure time, including Schönbrunn Imperial Palace—the former summer residence of the Habsburgs and a UNESCO World Heritage Site.
- Experience an intimate classical music performance in Vienna during an optional evening outing.
- Get to know Slovakia's charming capital—the city of Bratislava—with a tour that includes hilltop Bratislava Castle.
- Discover rooms with fascinating and unique 18-century features at the resplendent Schloss Hof Palace in Austria.
- Tee off at some of Europe's most celebrated and historic golf courses with an optional golf package.

## What's Included:

7 nights accommodations. 7 breakfasts, 6 lunches, and 7 dinners (including a special welcome dinner) served with quality red and white varietals from Europe's famous wine regions, draft beer, or soft drinks. All on-board activities. All excursions as noted in the 9-day itinerary. Port fees. Private motor coach transportation. Luggage handling. Gratuities to ship crew, Orbridge Travel Director, local guides, drivers, porters, and wait staff for included meals. Group airport transfers for guests arriving and departing during the suggested times.

## Your 9-Day Itinerary

- Day 1:** En route from U.S.
- Day 2:** Arrive in Munich, Germany / Passau – Embarkation (D)
- Day 3:** Regensburg (B,L,D)
- Day 4:** Passau / Linz (B,L,D)
- Day 5:** Emmersdorf / Dürnstein / Vienna (B,L,D)
- Day 6:** Vienna (B,L,D)
- Day 7:** Bratislava (B,L,D)
- Day 8:** Esztergom / Budapest (B,L,D)
- Day 9:** Budapest – Disembarkation / Depart for U.S. (B)

Special Rates from: **\$4,795**    Single from: **\$5,095**

Dates, Rates, and Itinerary subject to change.

\*Stateroom Category C1. Space is limited. **12**







# Antarctica Discovery

JANUARY 11-22, 2024 (optional: Buenos Aires pre-tour Jan. 9-12, 2024; Iguazú Falls post-tour: Jan. 22-25, 2024)

Join this incredible journey through the vast beauty of the White Continent, featuring pristine polar wilderness, abundant wildlife, and spectacular scenery.



## Program Highlights

- Explore the South Shetland Islands and the Antarctic Peninsula, a beautiful island chain filled with an impressive variety of wildlife.
- Cruise aboard the perfect vessel for exploration. *Ocean Victory* is an Ice Class 1A super (equivalent to Polar Class 6), featuring 83% staterooms with balconies and a unique X-Bow ship design. The inverted bow quickens the Drake Passage crossing as it slices through waves, reducing rolling by 80%—and helping to prevent possible seasickness. This proven technology produces very low levels of noise and vibration.
- Enjoy the company and keen insights of expert expedition guides, scientists, and lecturers throughout the journey.
- Take advantage of the ship's impressive amenities, including two hot tubs, spa, gym, lounges, outdoor bar, and interactive dining experience.

## What's Included:

1 night luxury hotel accommodations (including breakfast) in Ushuaia prior to embarkation. 9 nights accommodations onboard *Ocean Victory*, including all onboard meals and complimentary house wine and beer with lunch and dinner. Special welcome / farewell captain's cocktail. 24-hour self-service coffee and tea facilities onboard. All scheduled landings and excursions (subject to weather and ice conditions). Your own expedition parka to keep. A pair of insulated rubber boots for shore landings for the duration of the cruise (to be returned prior to disembarkation). Access to a photographic trip log (shared with guests after the voyage via an online link). All ship-board gratuities. All luggage portage. All port fees. Transfers from the hotel to the ship on embarkation day. Group transfers for guests arriving and departing during the suggested times.

## Your 12-Day Itinerary

- Day 1:** En Route from U.S. †  
†Travel time from U.S. may take up to two days.
- Day 2:** Arrive in Ushuaia, Argentina
- Day 3:** Ushuaia – Embarkation (B,D)
- Days 4-5:** Drake Passage (B,L,D daily)
- Days 6-9:** South Shetland Islands / Antarctic Peninsula (B,L,D daily)
- Days 10-11:** Drake Passage (B,L,D daily)
- Day 12:** Ushuaia – Disembarkation / Depart for U.S. (B)

**Optional 3-Day Pre-Tour:** Buenos Aires

**Optional 4-Day Post-Tour:** Iguazú Falls

Special Rates from:	Single from:
<b>\$9,995</b>	<b>\$16,995</b>

Buenos Aires Pre-Tour

Special Rate:	Single:
<b>\$1,595</b>	<b>\$1,995</b>

Iguazú Falls Post-Tour

Special Rate:	Single:
<b>\$2,395</b>	<b>\$3,895</b>

Dates, Rates, and Itinerary subject to change.









# The Galapagos Islands – Northern Itinerary

FEBRUARY 17-24, 2024 (optional: Mashpi Lodge pre-tour Feb. 14-17, 2024; Machu Picchu post-tour Feb. 24-29, 2024)

Feel the thrill of encountering the flora and fauna that famously inspired Charles Darwin—and in his footsteps, generations of nature lovers.



## Program Highlights

- During a full day tour of Quito, marvel at the gold leaf interior of the Jesuit Church of la Compañía—a fine example of the mix of European influences and indigenous art called the Baroque school of Quito; enjoy a lunch of Ecuadorian specialties; and view a curated collection of Pre-Columbian art.
- Observe with remarkable proximity the diversity of endemic species such as the Nazca, red- and blue-footed boobies; giant tortoises; Santa Fe land iguanas; and the famous Darwin's finches.
- Snorkel with sea lions, colorful tropical fish, and sea turtles; and discover the myriad of aquatic wildlife of the world's second largest marine reserve.
- Explore secluded inlets and stroll sweeping white coral beaches, such as Darwin Bay. See tidal pools and pass by colonies of various bird species.
- Visit the lush highlands of Santa Cruz Island, the perfect habitat to see the Galapagos Giant Tortoise, and Puerto Egas on Santiago Island—the site of a former salt mine and where you're most likely to see the Galapagos fur seal.

## What's Included:

2 nights at the 5-star Casa Gangotena in Quito prior to embarkation. 4 nights aboard the *Isabela II*, with exploration by panga, kayak, paddle board or glass-bottom boat, naturalist-led excursions, and lectures. 1 night at Wyndham Quito Airport Hotel after disembarkation. A welcome reception in Quito, 7 breakfasts, 6 lunches, and 4 dinners (served with house wine) including a farewell dinner. All excursions and presentations. Complimentary use of kayaks, paddle boards, shorty wetsuits, and snorkeling equipment. Galapagos National Park entrance fee and transit card. Internal air travel (from Quito to the islands on day 3, and return to Quito on day 7). Gratuities to local guides, hotel porters, and drivers in Quito. Airport transfers for guests arriving and departing during the suggested times. **(Airfare between main program and Machu Picchu Post-Tour is an additional \$899\* per person.)** \*subject to change

## Your 8-Day Itinerary

- Day 1:** En Route / Arrive in Quito, Ecuador
- Day 2:** Quito (B,L,R)
- Day 3:** Quito / Flight to Baltra / Santa Cruz Highlands / Puerto Ayora – Embarkation (B,L,D)
- Day 4:** Santiago: Puerto Egas / Chinese Hat Islet (B,L,D)
- Day 5:** Genovesa: Prince Philip's Steps / Darwin Bay (B,L,D)
- Day 6:** Santa Fe / South Plaza (B,L,D)
- Day 7:** Baltra – Disembarkation / Flight to Quito (B,L)
- Day 8:** Quito / Depart for U.S. (B)

**Optional 4-Day Pre-Tour:** Mashpi Lodge

**Optional 6-Day Post-Tour:** Machu Picchu

Special Rates from:	Single:
<b>\$5,495</b>	<b>\$9,895</b>

Mashpi Lodge Pre-Tour

Special Rate:	Single:
<b>\$1,895</b>	<b>\$2,695</b>

Machu Picchu Post-Tour

Special Rates from:	Single from:
<b>\$3,995</b>	<b>\$5,895</b>

Dates, Rates, and Itinerary subject to change.





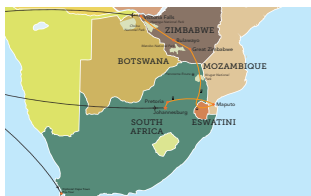
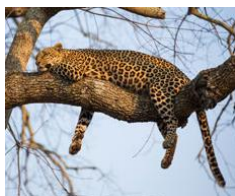




# African Expedition by Private Train

AUGUST 10-24, 2024 (optional: Cape Town pre-tour Aug. 7-11, 2024)

This specially curated journey takes you through the inspiring landscapes of South Africa, Eswatini, Mozambique, and Zimbabwe.



## Program Highlights

- Travel in style aboard the *African Explorer* as you follow unique routing through South Africa, Eswatini, Mozambique, and Zimbabwe.
- Discover stunning wildlife while on an extensive safari through Kruger National Park.
- Enjoy the Panorama Route as you travel by bus through the rugged Drakensberg mountain range. This legendary route winds along the steeply sloping Drakensberg escarpment, offering spectacular views across the plains of the Lowveld, more than 3,000 feet below.
- Spot for members of “The Big Five” during a safari at the Makalali Game Reserve.
- At Zambezi National Park, explore the Zambezi River by boat with the chance of viewing elephants and hippos from up close.
- Visit Matobo National Park, a UNESCO World Heritage Site, to view the grave of Cecil Rhodes, who founded the colonial territory of Rhodesia, today’s Zimbabwe.
- Set out for a full day safari at Hwange National Park, Zimbabwe’s largest and most important game reserve, renowned for its herds of elephants and Cape buffalo.

## What’s Included:

10 nights accommodations aboard the *African Explorer* train, plus 1 night each deluxe lodging at Pretoria, Kruger National Park, and Victoria Falls. 13 breakfasts, 6 lunches, and 12 dinners—including a special farewell dinner, Expert naturalist guides throughout, including an Orbridge Expedition Leader. Onboard physician. Transfer and excursion transportation aboard air conditioned buses. Gratuities for Orbridge Expedition Leader, onboard guides, drivers, porters, attendants, and wait staff for included meals. All excursions described in the itinerary, including admission and park fees. Airport transfers for guests arriving and departing during the suggested times.

## Your 16-Day Itinerary

- Day 1:** En Route from U.S.
  - Day 2:** Arrive in Johannesburg, South Africa
  - Day 3:** Pretoria (B,D)
  - Day 4:** Full Day Aboard Train (B,L,D)
  - Day 5:** Kingdom of Eswatini (B,D)
  - Day 6:** Maputo, Mozambique (B,L,D)
  - Day 7:** Kruger National Park (B,L,D)
  - Day 8:** Drakensberg Mountains (B,D)
  - Day 9:** Makalali Game Reserve (B,L,D)
  - Day 10:** Aboard Train to Zimbabwe (B,L,D)
  - Day 11:** Great Zimbabwe (B,D)
  - Day 12:** Matobo National Park / Bulawayo (B,D)
  - Day 13:** Hwange National Park (B,L,D)
  - Day 14:** Victoria Falls, Zambia (B,D)
  - Day 15:** Victoria Falls / Depart for U.S. (B)
  - Day 16:** En Route / Arrive in U.S.
- Optional 5-Day Pre-Tour:** Cape Town

Special Rates from:      Single from:  
**\$10,995**                      **\$14,995**

.....  
Cape Town Pre-Tour

Special Rate:                      Single:  
**\$2,995**                              **\$3,895**

Dates, Rates, and Itinerary subject to change.






## Expedition Leaders & Travel Directors

Our purpose is to bring true understanding of a destination to our guests.



From helping you spot wildlife to providing an insider's perspective on local cuisine and wine, the knowledge and keen eyes of your Orbridge Expedition Leader or Travel Director will make all the difference in your educational experience. Enriched by their wealth of expertise, you'll bring home a deeper understanding of the creatures, characters, and culture of the world around you.



A person wearing a straw hat, a white long-sleeved shirt, a tan skirt, and black pants is seen from behind, standing on a balcony with a metal railing. They are carrying a black backpack and a camera. The background shows a panoramic view of a city at sunset, with buildings illuminated by warm lights and a large body of water in the foreground. The sky is a mix of orange, yellow, and blue.

*"The Orbridge team was awesome! I have taken many tours and have never before experienced such consideration by a tour operator." ~ Pat J.*

Learn more at [usna.orbridge.com](https://usna.orbridge.com)

- 
- Online reservation form
  - Full program details
  - Photos, videos, and map
  - Accommodations
  - Room descriptions
  - Rates and inclusions
  - Activity level
  - Terms and conditions



# Reservation Form

**Option 1:** Reserve now online at [usna.orbridge.com](https://usna.orbridge.com) or by calling (866) 639-0079.

**Option 2:** Secure your reservation with a deposit charged to the credit card below or with an enclosed check payable to: Orbridge, LLC.

## GUEST INFORMATION:

Guest #1 Name (Title/Salutation): \_\_\_\_\_

Email: \_\_\_\_\_ Class Year: \_\_\_\_\_

Home Phone: \_\_\_\_\_ Alt. Phone: \_\_\_\_\_

Address: \_\_\_\_\_

City: \_\_\_\_\_ State: \_\_\_\_\_ Zip: \_\_\_\_\_

Guest #2 Name (Title/Salutation): \_\_\_\_\_

Email: \_\_\_\_\_ Class Year: \_\_\_\_\_

Home Phone: \_\_\_\_\_ Alt. Phone: \_\_\_\_\_

Category Preference: 1st choice \_\_\_\_\_ 2nd choice \_\_\_\_\_

Pre-Tour Category (if applicable / choose one):  Classic Double  Deluxe Double  Classic Single  Deluxe Single

Post-Tour Category (if applicable / choose one):  Classic Double  Deluxe Double  Classic Single  Deluxe Single

## DEPOSIT:

# \_\_\_\_\_ guests joining program (\$2,500/person for *Antarctica Discovery* and *African Expedition by Train*; \$850/person for all other programs) +

# \_\_\_\_\_ guests joining pre-tour (\$500/person) +

# \_\_\_\_\_ guests joining post-tour (\$500/person) = \$ \_\_\_\_\_ **TOTAL DEPOSIT**

## DEPOSIT PAYMENT:

Check  ACH (*Automated Clearing House*)  MasterCard/Visa  American Express  Discover

Card #: \_\_\_\_\_ Exp. Date: \_\_\_\_\_ CVV: \_\_\_\_\_

Name (as printed on card): \_\_\_\_\_

Billing Address (if different from above): \_\_\_\_\_

City: \_\_\_\_\_ State: \_\_\_\_\_ Zip: \_\_\_\_\_

I/we have read, understand, and agree to the full Terms & Conditions at [terms.orbridge.com](https://terms.orbridge.com) and the COVID-19 Acknowledgement at [orbridge.com/wellness](https://orbridge.com/wellness); and I/we agree that Orbridge, LLC is authorized to charge my credit card above and/or take my/our deposit for this program.

Signature: \_\_\_\_\_ Date: \_\_\_\_\_

**Mail reservation form and deposit to:** Orbridge, P.O. Box 1376, Poulsbo, WA 98370

**Reservations, Deposits and Final Payment.** To secure your reservation, deposits are due upon placing a reservation as follows: \$850 per person per program and \$500 per person for any pre/post-tour. Orbridge accepts payment by check, ACH, wire or major credit card. Final payment is due 90 days prior to the departure date. Reservations made after the final payment due date are due at the time of registration. If final payment is not received by Orbridge by the final payment due date, Orbridge may cancel your reservation in its sole discretion with no right of refund. CST#2098750-40 WST#602828994

**Reservation Grace Period.** Reservations made 121+ days prior to the departure date may be cancelled within 30 days from the reservation date ("Grace Period") for a full refund. Notice of cancellation must be received in writing during the Grace Period. The date of receipt will be used for the effective date.

**Reservation Cancellations and Refunds.** Notice of cancellation must be submitted to Orbridge in writing. The date of receipt will be used for the effective date. If the cancellation notice is received after the Grace Period (if applicable): (a) 91+ days prior to the departure date, all monies paid will be refunded less an administrative fee of \$350 per person for the main program and \$200 per person for a pre/post-tour; (b) 90-76 days prior to the departure date, a 25% cancellation fee for the full cost of the program and the balance will be refunded; (c) 75-61 days prior to the departure date, a 50% cancellation fee for the full cost of the program and the balance will be refunded; (d) 60-46 days prior to the departure date, a 75% cancellation fee for the full cost of the program and the balance will be refunded; (e) within 45 days prior to the departure date, a 100% cancellation fee for the full cost of the program. A 100% cancellation fee applies to all non-refundable airfare. Refunds, if any, will be processed within 30 days of our receipt of your written notice.

For *Antarctica Discovery* and *African Expedition by Private Train* terms and conditions, visit [terms.orbridge.com](https://terms.orbridge.com).