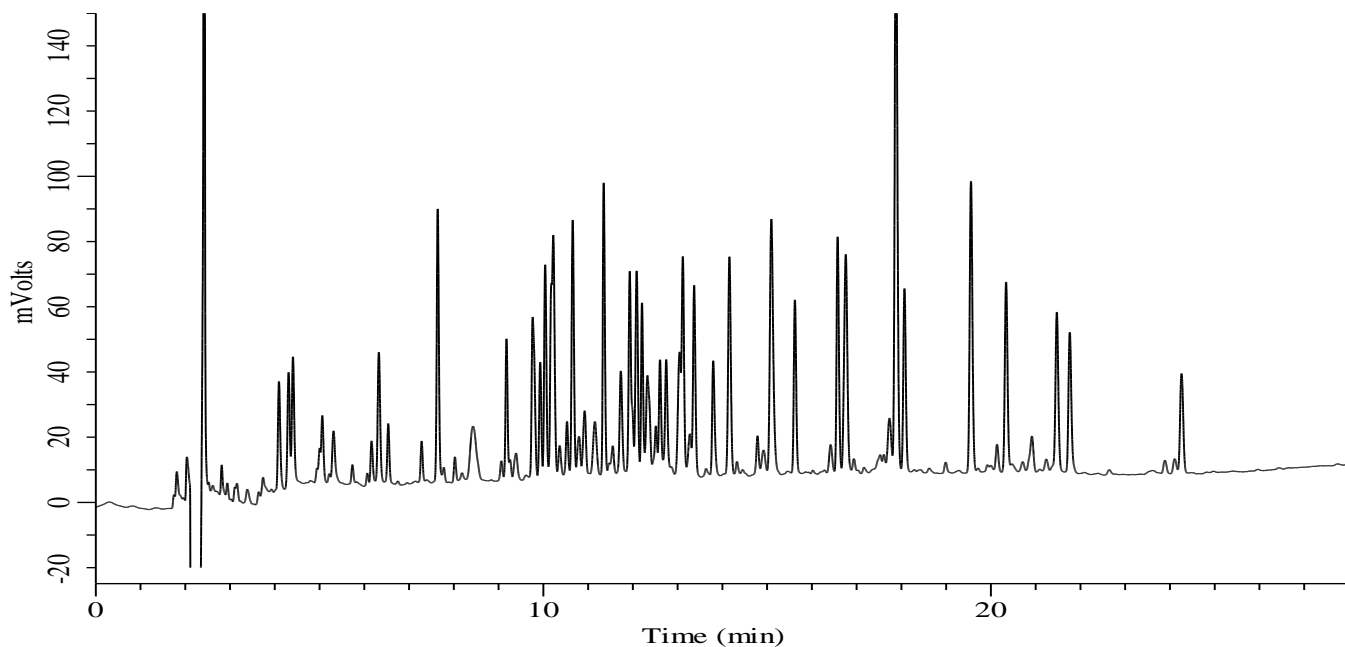


# InertSearch™ for LC

Inertsil® Applications

## Analysis of BSA Digests

Data No. LB791-0812



### Conditions

**Column** : ProteoSil 200-C18 (GL Sciences Inc.)  
(1.9  $\mu$  m, 150 x 2.1 mm I.D.)

**Column Cat. No.** : 5020-42217

**Eluent** : A) 0.1% TFA in CH<sub>3</sub>CN  
B) 0.1% TFA in H<sub>2</sub>O

### Analyte :

Tryptic Digest of BSA 0.5 mg/mL

Time (min)	A (vol%)	B (vol%)
0.0	10	90
30.0	50	50
30.1	90	10
35.0	90	10

**Flow Rate** : 0.2 mL/min

**Col. Temp.** : 40 °C

**Detection** : UV 210 nm

**Injection Vol.** : 10  $\mu$  L