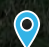


PEOPLE
HELPING
PEOPLE



PEOPLE **HELPING** PEOPLE
f o x v t n MCKIMCREED.COM

 McKim & Creed delivered SUE and locating services for the PPP Riverside Gas Replacement Project, identifying gas facilities at multiple Jacksonville intersections.

GET TO KNOW US

McKim & Creed is an employee-owned engineering and surveying firm dedicated to solving complex infrastructure challenges. By integrating national expertise with local insights, the firm delivers innovative solutions that benefit clients and communities. Their technical specialties encompass civil, environmental, mechanical, electrical, plumbing, structural, and stormwater engineering; industrial design-build services; airborne and mobile LiDAR/scanning; unmanned aerial systems; subsurface utility engineering; and hydrographic and conventional surveying services across the energy, transportation, federal, land development, water, and building markets.

INDUSTRY RANKINGS

Rankings as per *Engineering News-Record (ENR)*



#155

Top 500 Design Firm (ENR)



#141

Top 200 Environmental Firm (ENR)



#21

Top Southeast Design Firms (ENR)



#62

Top Mid-Atlantic Design Firm (ENR)



#8

Top Trenchless Technology Firm



WATER AND WASTEWATER



GEOMATICS/HYDROGRAPHIC SURVEY



MECHANICAL, ELECTRICAL, PLUMBING



SITE/CIVIL ENGINEERING + LAND PLANNING



INDUSTRIAL DESIGN-BUILD

OUR PASSION TO HELP OTHERS MOTIVATES US TO MAKE A DIFFERENCE.

FUNDING ASSISTANCE

McKim & Creed assists clients in securing funding for Natural Gas projects. Below is a list of projects and the funding sources for which we have helped clients obtain grant funding.

We have extensive experience navigating federal, state, and local funding programs, including grants through the U.S. Department of Energy and state-level infrastructure initiatives. Our team has successfully guided clients through complex application processes, ensuring compliance and maximizing award potential. In Louisiana, we've supported projects leveraging energy resilience and modernization funds, helping utilities and municipalities secure critical resources for system upgrades and safety improvements.

SECURED FUNDING - UTILITIES

DATE	FUNDING SOURCE	PROJECT	GRANT \$\$\$
6/2022	Capital Outlay	Donaldsonville Natural Gas	\$1,100,000
4/2023	HUD	Donaldsonville Natural Gas	\$4,000,000
4/2023	PHMSA Round 1	Donaldsonville Natural Gas	\$10,000,000
4/2023	PHMSA Round 2	Donaldsonville Natural Gas	\$20,000,000
4/2023	PHMSA Round 2	E. Feliciana Natural Gas Improvements	\$15,000,000
SECURED FUNDING - UTILITIES			\$50,100,000

CONNECT WITH OUR INDUSTRY EXPERTS



KIMBERLY KOEHL, PE
LOUISIANA GROUP MANAGER
📞 504-453-8367
✉️ KKoehl@mckimcreed.com



STEVEN BOURG
CLIENT PROGRAM COORDINATOR
📞 225-223-8663
✉️ SBourg@mckimcreed.com



GLENN SHAHEEN, PE
VP & REGIONAL MANAGER
📞 225-571-0968
✉️ GShaheen@mckimcreed.com



TYLER KENNEDY
SUE PROJECT MANAGER
📞 678-671-4834 X2606
✉️ TKennedy@mckimcreed.com

NATURAL GAS ENGINEERING



IMPORTANCE – Natural Gas services are critical to the success of many communities, providing for residential, commercial, and industrial customers. Investing in natural gas is both critical to safety and can save millions of dollars in lost resources.

PROJECT TYPES

- ✓ System Replacement
- ✓ System Repair
- ✓ System Design
- ✓ Regulator Station Design
- ✓ Rate Studies
- ✓ Asset Inventory

CLIENTS

- ✓ Cities
- ✓ Parishes/Counties
- ✓ Private Sector

SERVICES OFFERED

- ✓ Preliminary Engineering
- ✓ System Modeling
- ✓ Masterplanning
- ✓ Construction Oversight
- ✓ Cost Estimating
- ✓ Permitting
- ✓ Construction Plans
- ✓ Alternative Analysis
- ✓ Funding Assistance
- ✓ Public Outreach
- ✓ SUE
- ✓ GIS Mapping



Over the last five years, McKim & Creed has assisted the **City of Donaldsonville** with the replacement of 80% of their natural gas infrastructure through several funding sources including: PHMSA, HUD, and Capital Outlay. This has expanded the City's ability to provide natural gas services to a broader variety of clients and improved system safety.

SERVICES OFFERED

- ✓ Grant assistance
- ✓ environmental clearance
- ✓ route prioritization/alternatives analysis
- ✓ design
- ✓ construction oversight
- ✓ public outreach
- ✓ permitting
- ✓ cost estimating

SUE IN ACTION



Equipment Spotlight: CORING RIG PROCESS

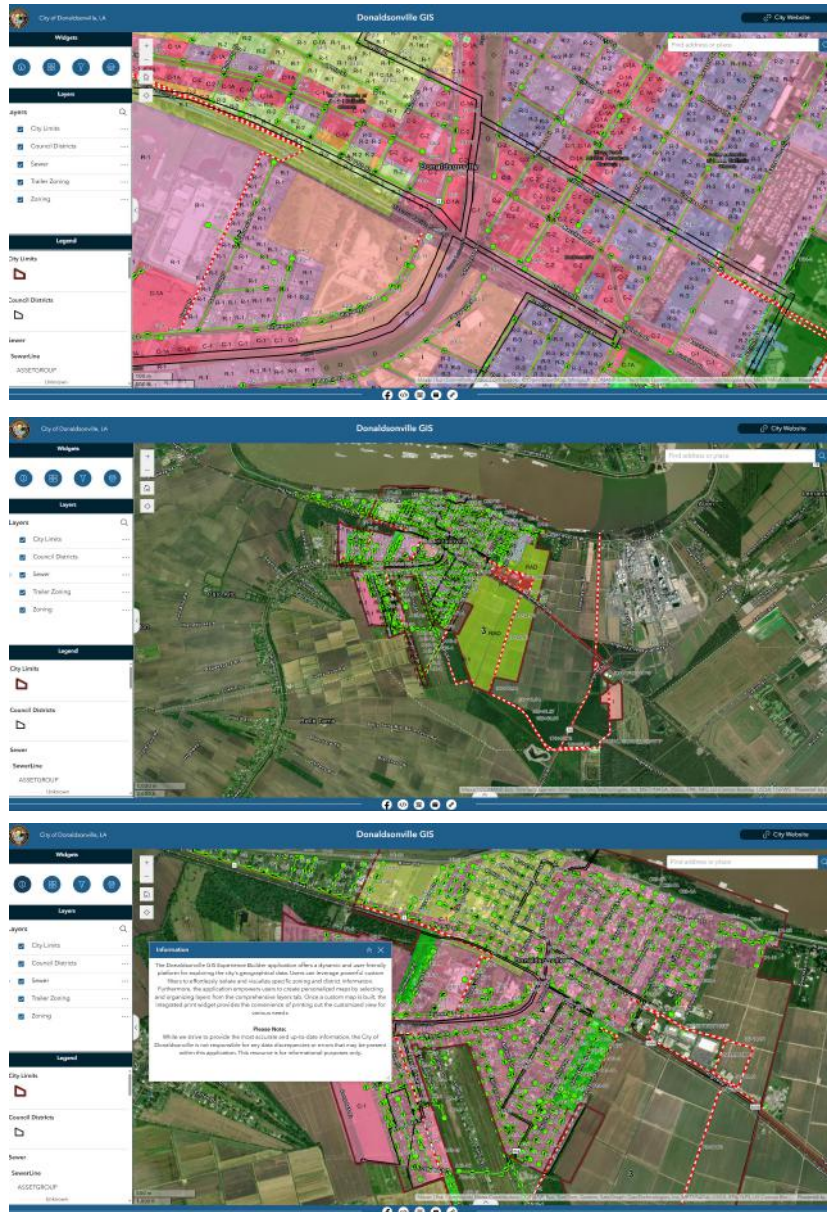
BENEFITS:

- ✓ Safer, cleaner, and more efficient than conventional digging methods for test holes
- ✓ Crews using the core rig can occupy a single lane of traffic, minimizing disruption to communities
- ✓ Cost-effective due to being faster than traditional methods



INNOVATION IN ACTION

Our team uses many resources and programs to ensure that our clients receive the most useful information for tracking the long-term efficiencies of their gas systems. We build GIS portals indicating the system's assets which allows the client to be aware of the location of lines. Additionally, the GIS systems can be used to pinpoint leaks based on modeled versus observed system operation.



OUR SAFE CULTURE

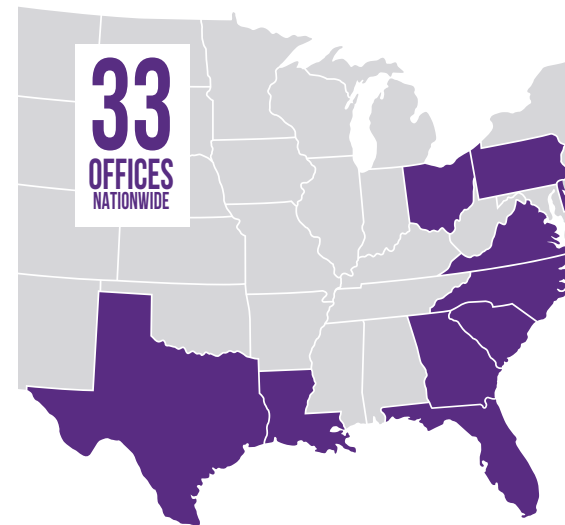
Maintaining a safe work environment for our employees, clients, contractors, consultants, sub-consultants, and the public, is of utmost importance to McKim & Creed. We have developed and abide by detailed work processes and procedures, to continually maintain a safe work environment while providing high-quality services to our clients.

McKim & Creed educates its employees in order through training and review of safety procedures and review of safety-conscious work habits. Safety is every employee's responsibility. Our employees are encouraged to point out potential hazards and to do everything reasonable to prevent potential accidents or injuries.



WHERE YOU CAN FIND US

With 33 offices located along the eastern seaboard, and nearly 1000 employees, we are prepared with a diverse range of regional knowledge and talent to support you on your complex project.



N. CAROLINA

Asheville
Charlotte
Raleigh
Wilmington

S. CAROLINA

Charleston
Greenville

GEORGIA

Sugar Hill

LOUISIANA

Baton Rouge

DELAWARE

Newark

OHIO

Columbus

FLORIDA

Boca Raton
Clearwater

Daytona Beach

Fort Myers

Jacksonville

Orange City

Orlando

Palm Coast

Pensacola

Sarasota

Tampa

Austin

Dallas-Fort Worth

Houston

Stafford

Norfolk

Charlottesville

Pittsburgh

Sewickley