

Holstein RZG

SOMMER 2026



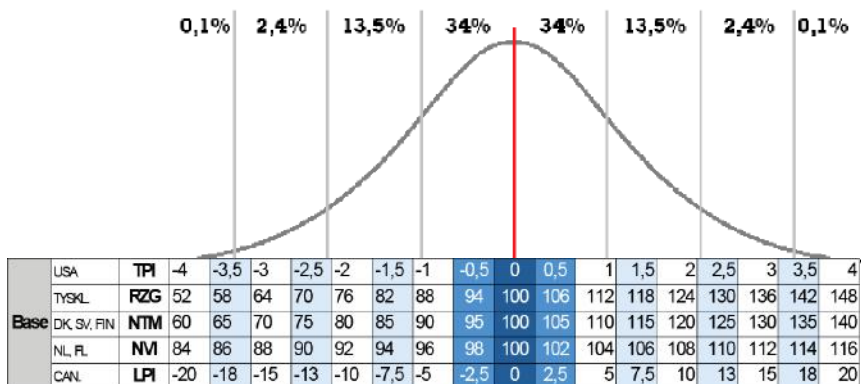
Diva (far: Peak RAINOW)

GENETICS POWERED BY
SYNETICS

Stamb.	Navn	Far	Morf	# døtre	% Sik.	RZG	RZ €	RZ E	BetaCas	aAa	OBS	PRIS Konv.	PRIS XX kss. **
261680	PELLEGRINO	TOPNOTCHPR	ROUTER	4.497	92	139	1.816	123	A1A1	324		170 kr.	285 kr.
262106	RAINOW	ALTAZAZZLE	ALTAEXPLOSION	2.376	94	140	2.337	106	A2A2	231	S	130 kr.	
262448	SKATER	SKELTON	GYWER	468	92	141	1.864	121	A1A2	234		160 kr.	
263248	ZIVET	ALTAZAREK	SKYWALKER	2.371	93	144	2.288	116	A2A2	342		170 kr.	285 kr.
263791	ALSTER	ALJANO	GITAR	G	79	148	2.289	123	A2A2	342		160 kr.	285 kr.
	CALLBOX <i>N</i>	CALLUM	ROVER PK	G	78	154	2.617	133	A2A2		R	205 kr.	305 kr.
263577	CAMOUFLAGE	CAMUS	CHILTON	G	80	138	1.688	124	A2A2	231		155 kr.	270 kr.
263748	COMEDY	COMEBACK	BEACHBOY	G	79	147	2.349	123	A2A2	342		175 kr.	295 kr.
263826	CRANIUM	COMEBACK	FOREMAN	G	79	148	2.259	125	A2A2	243		175 kr.	295 kr.
264039	EVERETT	ENCLAVE	FELLANI	G	79	147	2.363	123	A2A2	243		160 kr.	275 kr.
264113	METEORIT	METCALF	GLADIUS	G	78	155	3.133	107	A2A2		R	190 kr.	295 kr.
264040	PIKBUBE	PICARD	HUNTINGKAX	G	79	151	2.697	125	A2A2	342		160 kr.	295 kr.
264175	ROCKABILLY	ROCKWELL	PELLEGRINO	G	78	152	2.539	124	A2A2	432	R	190 kr.	305 kr.
263827	SORANJO	SOYSAUCE	ADAWAY	G	79	149	2.535	117	A2A2	534		190 kr.	325 kr.
264041	SOYLENT	SOYSAUCE	POWERBUCK	G	79	146	2.516	108	A2A2	345	B	185 kr.	295 kr.
263405	ULTRABOY	RIDERCUP	ALTAZAZZLE	G	79	146	2.475	116	A1A2	324	S	125 kr.	
263831	MEDY RED P	MEMBER PP	FOREMAN	G	79	142	2.195	119	A2A2	354		160 kr.	285 kr.
Polled PP													
263828	DOUG PP	DRAGON P	NEXUS	G	79	136	1.732	105	A2A2	243		160 kr.	280 kr.
263829	HAVANNA PP	HOTTOP P	SIMON P	G	80	131	1.431	110	A2A2	342		135 kr.	265 kr.
264042	MOU PP RDC	MO RED PP	CARENZO	G	78	141	1.952	114	A2A2	423		135 kr.	260 kr.
264115	RAX PP RDC	RIOS P RDC	SMAUG PP	G	78	145	2.283	121	A1A1			165 kr.	285 kr.
264043	SAMU PP	SAMIR P	SAMUEL P	G	78	136	1.901	108	A2A2	513		135 kr.	
	VATICAN PP <i>N</i>	CIRCUS P	REFLEX P	G	78	133	1.499	123	A2A2		R	210 kr.	305 kr.
263830	FUN RED PP	FEIT RED P	SAM RED P	G	79	143	2.006	119	A1A2	432		160 kr.	285 kr.
264180	HAY RED PP	HANDOUT P	RAMMSTEIN	G	78	147	2.521	113	A1A1			175 kr.	295 kr.
263792	MAZ RED PP	MCDONALD P	SOLITAIR P	G	80	136	1.545	130	A1A2	243		165 kr.	285 kr.
263832	MOB RED PP	MEMBER PP	STAR P RDC	G	79	139	1.864	122	A2A2	423		145 kr.	265 kr.
	RON RED PP <i>N</i>	RANKING	SONO P RDC	G	78	147	2.161	122	A2A2	423	R	170 kr.	320 kr.

Graf og indeks forklaring RZG

	64	100	136
Krop			
Styrke			
Malke-Organer			
Lemmer			
Helhed			
Størrelse	Lille		Stor
Brystbredde	Smal		Bred
Kropsdybde	Lille		Stor
Malkepræg	Tæt		Åben
Huld	Lidt		Meget
Krydsretning	Opsvejet		Hældende
Krydsbredde	Smalt		Bredt
Lemmer, bagfra	Tætstillede		Parallele
Lemmer, sidestilling	Ret		Kroget
Klovhældning	Lav		Stejl
Bevægelse	Svag		Stærk
Foryver tilhæftning	Løs		Fast
Forpatteplacering	Vidtstillede		Tætstillede
Pattelængde	Korte		Lange
Yverdybde	Dyb		Høj
Baggyverhøjde	Lav		Høj
Bagpatteplacering	Vidtstillede		Tætstillede
Yverbånd	Svagt		Stærkt





AFPRØVET
Døtre afprøvet.



NEW
Nye tyre i vores portefølje.



RØD
Rødbroget



KØNSSORTERET - kvie
Kan bestilles som kønssorteret
(lager kan være begrænset).



POLLED - homozygot
Leder du efter pollede tyre?
Tyre med PP-logoet er homo-
zygot polled.



DDcontrol
Top 25-% tyre med resistens mod
digital dermatitis (Mortellaro).



A2/A2
Tyre med egenskab
Beta Casein A2/A2.

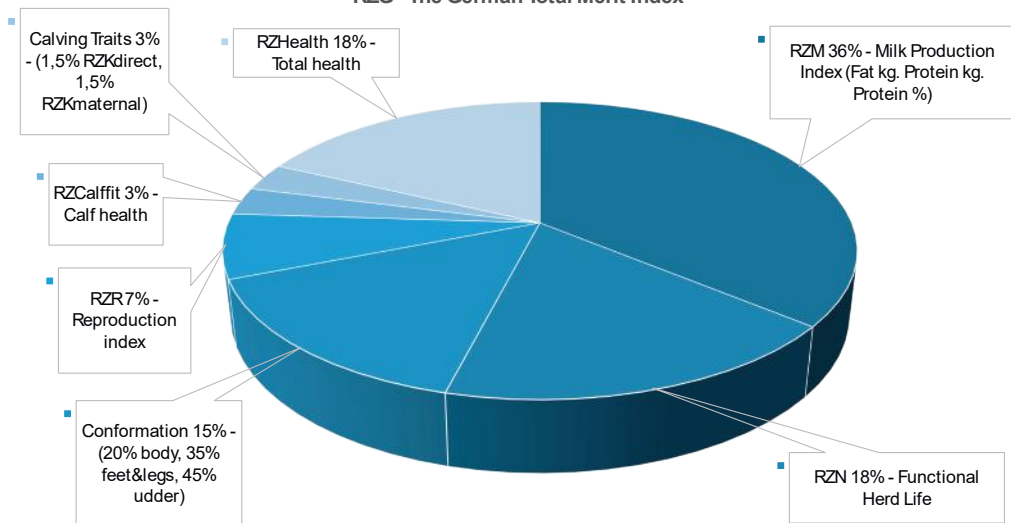


DDpremium
Top 10-% tyre med resistens mod
digital dermatitis (Mortellaro).

RZG - TOTAL MERIT IN GERMANY

- RZG is a combination of mostly production and longevity proofs
- Also keeping conformation as a direct information included in the RZG.
- It is the ideal combination of traits to guarantee the farmer a healthy, longlasting and high producing cow.

RZG - The German Total Merit Index



PELLEGRINO

FRA 250007253843259 • German Reg. No. 10.509948

born: 10/30/2019

Breeder: GAEC des Lys, Rahay, France

aAa 324156 K-Cn: AB β-Cn: A1/A1

HIGH PRODUCTION · GREAT TYPE · WESSWOOD-HC RUDY MISSY EX-92 FAMILY

Progenesis Topnotch (Jedi x Supersire)	Siemers Router (S.: Doorsopen)	Leaderwin Muscadet (S.: Mogul)
Westcoast Router Jabel VG-86 2/1 lac 12843 3.93 505 3.17 407	Westcoast Muscadet Jabra 3745 VG-85 3/2 lac 11734 3.60 422 3.26 383 best lac 2 12529 3.18 399 3.27 410	Compass-TRT Amrica Jabra VG-85 1/1 lac 10406 4.75 494 3.94 410

Linear Profile	88	100	112	124
Stature	small			tall 125
Rib Structure	flat			arched 111
Body Depth	shallow			deep 111
Strength	frail			strong 108
Rump Angle	ascending			sloped 106
Rump Width	narrow			wide 114
Rear Leg Set Side View	posty			sickled 94
Foot Angle	low angle			steep 96
Hock Quality	swollen			dry 94
Rear Legs Rear View	hock-in			parallel 91
Front Feet Orientation	outward			straight 106
Locomotion	bad			good 100
Rear Udder Height	low			high 123
Suspensory Ligament	weak			strong 111
Teat Placement Front	wide			close 99
Teat Placement Rear	wide			close 108
Fore Udder Attachment	loose			tight 118
Udder Balance	rear deep			front deep 115
Udder Depth	deep			shallow 121
Teat Length	short			long 94



gRZG	139	gRZ€	1816€
Total Merit Index		Economic Total Merit	

gRZorganic	Organic Total Merit	Rel. 91%	131
-------------------	---------------------	----------	------------

gRZM	Milk Production Index	128		
Daugh. 4497 / Herds 1340	Rel. 92%			
Milk kg	Fat %	Fat kg	Protein %	Protein kg
+1559	+0.06	+69	-0.10	+42

gRZE	Total Conformation Index	123	
Daugh. 2551 / Herds 737	Rel. 95%		
Dairy Type	Body	Feet & Legs	Udder
125	115	94	124

gRZHealth	Total Health Index	Rel. 86%	114	
RZudderfit	RZhoof	DDcontrol	RZrepro	RZmetabol
111	95	84	111	110

gRZFE	RZFeedEfficiency	Rel. 42%	87
--------------	------------------	----------	-----------

gRZN	Functional Herd Life	Rel. 83%	121
-------------	----------------------	----------	------------

gRZS	Somatic Cell Count	Rel. 92%	122
-------------	--------------------	----------	------------

gRZD	Milking Speed	Rel. 82%	89
-------------	---------------	----------	-----------

gRZR	Daughter Fertility	Rel. 69%	113
-------------	--------------------	----------	------------

gRZRobot	Robot Index	Rel. 89%	101
-----------------	-------------	----------	------------

gRZPers	Persistence	Rel. 92%	100
----------------	-------------	----------	------------

gRZcalfit	Calf Health	Rel. 68%	112
------------------	-------------	----------	------------

gRZKd Calving Ease	Calving paternal	Rel. 90%	95
---------------------------	------------------	----------	-----------

gRZKm	Calving maternal	Rel. 89%	119
--------------	------------------	----------	------------

Sire Fertility	Excellent
-----------------------	------------------



Cavitella Lally VG-89 2.La



Cavitella Lally VG-89 2.La

PEAK RAINOW



840 840003213001132 • German Reg. No. 10.500937

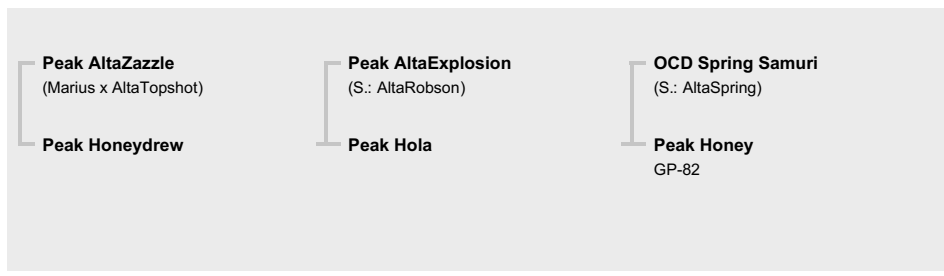
born: 04/14/2020

Breeder: PEAK Genetics, Watertown, WI, USA

aAa 231465 K-Cn: BB β-Cn: A2/A2



HIGH COMPONENT SIRE · PERFECT REAR LEG SIDE VIEW · SHOTTLE HEAVENLEE EX-90 FAMI



gRZG	140	gRZ€	2337€
Total Merit Index		Economic Total Merit	

gRZorganic	Organic Total Merit	Rel. 91%	131
-------------------	---------------------	----------	------------

gRZM	Milk Production Index				139
Daugh. 2376 / Herds 525					Rel. 94%
Milk kg	Fat %	Fat kg	Protein %	Protein kg	
+626	+0.95	+132	+0.17	+41	

gRZE	Total Conformation Index				106
Daugh. 509 / Herds 169					Rel. 96%
Dairy Type	Body	Feet & Legs	Udder		
127	97	104	100		

gRZHealth	Total Health Index				Rel. 87%	109
RZudderfit	RZhoof	DDcontrol	RZrepro	RZmetabol		
100	110	105	108	105		

gRZFE	RZFeedEfficiency	Rel. 45%	75
--------------	------------------	----------	-----------

gRZN	Functional Herd Life	Rel. 82%	119
-------------	----------------------	----------	------------

gRZS	Somatic Cell Count	Rel. 94%	99
-------------	--------------------	----------	-----------

gRZD	Milking Speed	Rel. 91%	108
-------------	---------------	----------	------------

gRZR	Daughter Fertility	Rel. 73%	120
-------------	--------------------	----------	------------

gRZRobot	Robot Index	Rel. -%	-
-----------------	-------------	---------	----------

gRZPers	Persistence	Rel. 94%	97
----------------	-------------	----------	-----------

gRZcalfit	Calf Health	Rel. 85%	120
------------------	-------------	----------	------------

gRZKd Calving Ease	Calving paternal	Rel. 95%	109
---------------------------	------------------	----------	------------

gRZKm	Calving maternal	Rel. 93%	111
--------------	------------------	----------	------------

Sire Fertility			-
-----------------------	--	--	----------

Linear Profile	88	100	112	124
Stature	small			tall
Rib Structure	flat			arched
Body Depth	shallow			deep
Strength	frail			strong
Rump Angle	ascending			sloped
Rump Width	narrow			wide
Rear Leg Set Side View	posty			sickled
Foot Angle	low angle			steep
Hock Quality	swollen			dry
Rear Legs Rear View	hock-in			parallel
Front Feet Orientation	outward			straight
Locomotion	bad			good
Rear Udder Height	low			high
Suspensory Ligament	weak			strong
Teat Placement Front	wide			close
Teat Placement Rear	wide			close
Fore Udder Attachment	loose			tight
Udder Balance	rear deep			front deep
Udder Depth	deep			shallow
Teat Length	short			long



MB Diva GP-83 1.La



Prima GP-83 1.La

SKATER



DEU 276000363561202 • German Reg. No. 10.833504

born: 02/18/2021

Breeder: Franz Meyer, Friesoythe, Germany

aAa 234 K-Cn: AA β-Cn: A1/A2

TREMENDOUS TYPE & UDDERS · COMPONENT IMPROVER · FROM MISSY FAMILY

Rust Holsteins Skelton (Starello RDC x Gymnast)	Gywer RDC (S.: Gymnast)	Progenesis Lighter (S.: Pure)
Dorit EX-90 4/4 lac 13232 4.06 537 3.56 471 best lac 4 14869 4.18 622 3.39 504	MAR Dana VG-86 4/3 lac 10131 4.22 428 3.74 379 best lac 1 11310 4.24 479 3.67 415	Diva MR EX-90 4/4 lac 13235 3.93 520 3.60 476 best lac 4 14960 3.80 568 3.56 532

Linear Profile	88	100	112	124
Stature	small			tall 133
Rib Structure	flat			arched 97
Body Depth	shallow			deep 103
Strength	frail			strong 104
Rump Angle	ascending			sloped 114
Rump Width	narrow			wide 122
Rear Leg Set Side View	posty			sickled 100
Foot Angle	low angle			steep 92
Hock Quality	swollen			dry 103
Rear Legs Rear View	hock-in			parallel 108
Front Feet Orientation	outward			straight 92
Locomotion	bad			good 112
Rear Udder Height	low			high 124
Suspensory Ligament	weak			strong 106
Teat Placement Front	wide			close 112
Teat Placement Rear	wide			close 115
Fore Udder Attachment	loose			tight 110
Udder Balance	rear deep			front deep 89
Udder Depth	deep			shallow 113
Teat Length	short			long 110



gRZG	141	gRZ€	1864€
Total Merit Index		Economic Total Merit	

gRZorganic	Organic Total Merit	Rel. 90%	129
-------------------	---------------------	----------	------------

gRZM	Milk Production Index	135		
Daugh. 468 / Herds 244		Rel. 92%		
Milk kg	Fat %	Fat kg	Protein %	Protein kg
+1217	+0.12	+62	+0.19	+65

gRZE	Total Conformation Index	121	
Daugh. 250 / Herds 125		Rel. 94%	
Dairy Type	Body	Feet & Legs	Udder
108	106	109	119

gRZHealth	Total Health Index	Rel. 85%	113	
RZudderfit	RZhoof	DDcontrol	RZrepro	RZmetabol
105	114	118	99	109

gRZFE	RZFeedEfficiency	Rel. 41%	94
--------------	------------------	----------	-----------

gRZN	Functional Herd Life	Rel. 80%	116
-------------	----------------------	----------	------------

gRZS	Somatic Cell Count	Rel. 91%	104
-------------	--------------------	----------	------------

gRZD	Milking Speed	Rel. 92%	98
-------------	---------------	----------	-----------

gRZR	Daughter Fertility	Rel. 71%	117
-------------	--------------------	----------	------------

gRZRobot	Robot Index	Rel. 87%	110
-----------------	-------------	----------	------------

gRZPers	Persistence	Rel. 91%	103
----------------	-------------	----------	------------

gRZcalffit	Calf Health	Rel. 90%	94
-------------------	-------------	----------	-----------

gRZKd	Calving paternal	Rel. 96%	95
Calving Ease			

gRZKm	Calving maternal	Rel. 91%	112
--------------	------------------	----------	------------

Sire Fertility	Good
-----------------------	-------------



Bucket VG-86 1.La



Alia GP-84 1.La

SHA ZIVET



DEU 276001406051699 • German Reg. No. 10.833496

born: 01/12/2021

Breeder: Agrar GmbH Auligk, Groitzsch, Germany

aAa 342 K-Cn: BB β-Cn: A2/A2

HIGH PRODUCTION SIRE · ROBOT READY UDDERS · SEAGULL-BAY MY OCTAVIA VG-87

Peak AltaZarek (AltaTopshot x Rubicon)	Bomaz Skywalker (S.: Jedi)	Triplecrown Gatedancer (S.: Alta1stClass)
SHA Oryx VG-86 3/3 lac 10011 3.79 379 3.66 366 best lac 3 11787 3.78 446 3.75 442	Okapi EX-90 3/2 lac 12743 3.92 499 3.49 445 best lac 2 12959 3.97 514 3.49 452	Seagull-Bay My Octavia VG-87 4/3 lac 14297 3.87 553 3.33 476 best lac 1 16352 3.44 563 3.17 518

Linear Profile	88	100	112	124
Stature	small			tall 112
Rib Structure	flat			arched 95
Body Depth	shallow			deep 113
Strength	frail			strong 100
Rump Angle	ascending			sloped 105
Rump Width	narrow			wide 94
Rear Leg Set Side View	posty			sickled 112
Foot Angle	low angle			steep 92
Hock Quality	swollen			dry 109
Rear Legs Rear View	hock-in			parallel 98
Front Feet Orientation	outward			straight 102
Locomotion	bad			good 111
Rear Udder Height	low			high 115
Suspensory Ligament	weak			strong 101
Teat Placement Front	wide			close 87
Teat Placement Rear	wide			close 100
Fore Udder Attachment	loose			tight 116
Udder Balance	rear deep			front deep 110
Udder Depth	deep			shallow 107
Teat Length	short			long 102



gRZG	144	gRZ€	2288€
Total Merit Index		Economic Total Merit	

gRZorganic	Organic Total Merit	Rel. 94%	131
-------------------	---------------------	----------	------------

gRZM	Milk Production Index	148	
Daugh. 2371 / Herds 754		Rel. 93%	
Milk kg	Fat %	Fat kg	Protein %
+2089	+0.06	+91	+0.12
			+87

gRZE	Total Conformation Index	116	
Daugh. 816 / Herds 243		Rel. 98%	
Dairy Type	Body	Feet & Legs	Udder
111	106	107	114

gRZHealth	Total Health Index	Rel. 90%	106
RZudderfit	RZhoof	DDcontrol	RZrepro
100	111	114	102
			104

gRZFE	RZFeedEfficiency	Rel. 47%	90
--------------	------------------	----------	-----------

gRZN	Functional Herd Life	Rel. 87%	116
-------------	----------------------	----------	------------

gRZS	Somatic Cell Count	Rel. 93%	95
-------------	--------------------	----------	-----------

gRZD	Milking Speed	Rel. 97%	91
-------------	---------------	----------	-----------

gRZR	Daughter Fertility	Rel. 84%	101
-------------	--------------------	----------	------------

gRZRobot	Robot Index	Rel. -%	-
-----------------	-------------	---------	----------

gRZPers	Persistence	Rel. 93%	121
----------------	-------------	----------	------------

gRZcalfit	Calf Health	Rel. 98%	112
------------------	-------------	----------	------------

gRZKd	Calving paternal	Rel. 99%	109
Calving Ease			

gRZKm	Calving maternal	Rel. 98%	108
--------------	------------------	----------	------------

Sire Fertility	Good
-----------------------	-------------



Reine VG-86 1.La



SHA Baba VG-85 1.La

ALSTER



DEU 276000365608177 • German Reg. No. 10.833682

born: 09/26/2023

Breeder: Henning Lucas, Uelsen, Germany

aAa 342 K-Cn: BB β-Cn: A2/A2



TOP RZG BULL · HIGH MILK PRODUCTION · WKM LADYLIZ MR VG-88 FAMILY

Aljano (Arroz x Riveting)	Guitar (S.: Gigabyte)	Broeks Freemax (S.: Imax)
Lady Gina VG-85 2/1 lac 12807 3.91 501 3.30 422	MAR Lady Lena VG-85 4/3 lac 14661 4.43 649 3.69 541 best lac 3 16946 4.21 713 3.75 636	WKM Ladyliz Mr VG-88 4/4 lac 12904 4.29 554 3.58 462 best lac 4 13189 4.51 595 3.68 485

gRZG Total Merit Index	148	gRZ€ Economic Total Merit	2289€
----------------------------------	------------	-------------------------------------	--------------

gRZorganic	Organic Total Merit	Rel. 86%	137
-------------------	---------------------	----------	------------

gRZM	Milk Production Index	135		
Daugh. 0 / Herds 0		Rel. 79%		
Milk kg	Fat %	Fat kg	Protein %	Protein kg
+1298	+0.22	+77	+0.10	+57

gRZE	Total Conformation Index	123	
Daugh. 0 / Herds 0		Rel. 80%	
Dairy Type	Body	Feet & Legs	Udder
111	104	113	118

gRZHealth	Total Health Index	Rel. 83%	118	
RZudderfit	RZhoof	DDcontrol	RZrepro	RZmetabol
107	112	113	108	110

gRZFE	RZFeedEfficiency	Rel. 41%	88
--------------	------------------	----------	-----------

gRZN	Functional Herd Life	Rel. 72%	125
-------------	----------------------	----------	------------

gRZS	Somatic Cell Count	Rel. 78%	115
-------------	--------------------	----------	------------

gRZD	Milking Speed	Rel. 78%	85
-------------	---------------	----------	-----------

gRZR	Daughter Fertility	Rel. 59%	113
-------------	--------------------	----------	------------

gRZRobot	Robot Index	Rel. -%	-
-----------------	-------------	---------	----------

gRZPers	Persistence	Rel. 78%	105
----------------	-------------	----------	------------

gRZcalfit	Calf Health	Rel. 65%	105
------------------	-------------	----------	------------

gRZKd	Calving paternal	Rel. 87%	103
Calving Ease			

gRZKm	Calving maternal	Rel. 76%	114
--------------	------------------	----------	------------

Sire Fertility			-
-----------------------	--	--	----------

Linear Profile	88	100	112	124
Stature	small			tall 111
Rib Structure	flat			arched 103
Body Depth	shallow			deep 104
Strength	frail			strong 97
Rump Angle	ascending			sloped 115
Rump Width	narrow			wide 108
Rear Leg Set Side View	posty			sickled 97
Foot Angle	low angle			steep 111
Hock Quality	swollen			dry 100
Rear Legs Rear View	hock-in			parallel 110
Front Feet Orientation	outward			straight 107
Locomotion	bad			good 110
Rear Udder Height	low			high 131
Suspensory Ligament	weak			strong 109
Teat Placement Front	wide			close 110
Teat Placement Rear	wide			close 118
Fore Udder Attachment	loose			tight 109
Udder Balance	rear deep			front deep 104
Udder Depth	deep			shallow 104
Teat Length	short			long 104



Dam:
Lady Gina VG-85



Granddam:
MAR Lady Lena VG-85

CALLBOX



DEU 276000365810317 • German Reg. No. 10.833743

born: 11/27/2024

Breeder: Olaf Nimmert, Großenwörden, Germany

K-Cn: BB β-Cn: A2/A2



gRZG	154	gRZ€	2617€
Total Merit Index		Economic Total Merit	

gRZorganic	Organic Total Merit	Rel. 86%	141
-------------------	---------------------	----------	------------

gRZM	Milk Production Index	143		
Daugh. 0 / Herds 0		Rel. 78%		
Milk kg	Fat %	Fat kg	Protein %	Protein kg
+2358	-0.04	+88	-0.06	+74

gRZE	Total Conformation Index	133	
Daugh. 0 / Herds 0		Rel. 78%	
Dairy Type	Body	Feet & Legs	Udder
123	105	111	129

gRZHealth	Total Health Index	Rel. 83%	121	
RZudderfit	RZhoof	DDcontrol	RZrepro	RZmetabol
109	112	114	111	112

gRZFE	RZFeedEfficiency	Rel. 40%	86
--------------	------------------	----------	-----------

gRZN	Functional Herd Life	Rel. 71%	122
-------------	----------------------	----------	------------

gRZS	Somatic Cell Count	Rel. 77%	116
-------------	--------------------	----------	------------

gRZD	Milking Speed	Rel. 77%	107
-------------	---------------	----------	------------

gRZR	Daughter Fertility	Rel. 57%	112
-------------	--------------------	----------	------------

gRZRobot	Robot Index	Rel. -%	-
-----------------	-------------	---------	----------

gRZPers	Persistence	Rel. 77%	107
----------------	-------------	----------	------------

gRZcalfit	Calf Health	Rel. 62%	103
------------------	-------------	----------	------------

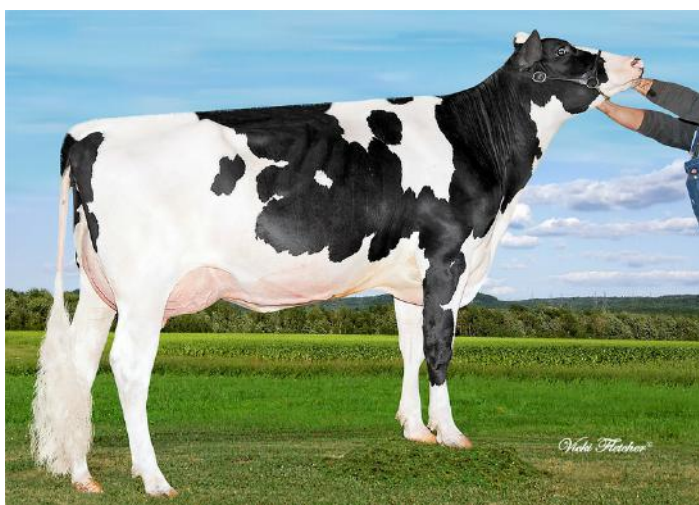
gRZKd	Calving paternal	Rel. 71%	90
Calving Ease			

gRZKm	Calving maternal	Rel. 74%	105
--------------	------------------	----------	------------

Sire Fertility			-
-----------------------	--	--	----------

Callum (Welcome-Tel Coverboy x Vitality)	Peak Rover (S.: AltaZazzle)	Rosylane-LLC Murphy (S.: Charl)
Annemone	Annemone VG-85 2/2 lac 10979 4.67 513 3.62 397 best lac 2 11186 5.00 559 3.67 411	Alma 1 VG-88 4/4 lac 10240 4.30 440 3.68 377 best lac 4 11341 4.50 510 3.77 427

Linear Profile	88	100	112	124
Stature	small			tall 107
Rib Structure	flat			arched 114
Body Depth	shallow			deep 102
Strength	frail			strong 102
Rump Angle	ascending			sloped 109
Rump Width	narrow			wide 100
Rear Leg Set Side View	posty			sickled 95
Foot Angle	low angle			steep 105
Hock Quality	swollen			dry 94
Rear Legs Rear View	hock-in			parallel 109
Front Feet Orientation	outward			straight 106
Locomotion	bad			good 112
Rear Udder Height	low			high 129
Suspensory Ligament	weak			strong 106
Teat Placement Front	wide			close 125
Teat Placement Rear	wide			close 120
Fore Udder Attachment	loose			tight 124
Udder Balance	rear deep			front deep 103
Udder Depth	deep			shallow 123
Teat Length	short			long 100



7th dam:
Blondin MOM Arkansas EX-93



Broadcow:
Smithden Goldwyn Alexandra EX-94

WEH CAMOUFLAGE



DEU 276000364485847 • German Reg. No. 10.833578

born: 05/07/2022

Breeder: Jürgen Hintze, Trebel, Germany

aAa 231 K-Cn: AB β-Cn: A2/A2



gRZG	138	gRZ€	1688€
Total Merit Index		Economic Total Merit	

gRZorganic	Organic Total Merit	Rel. 87%	132
-------------------	---------------------	----------	------------

gRZM	Milk Production Index	123
Daugh. 0 / Herds 0	Rel. 80%	
Milk kg	Fat %	Fat kg
Protein %	Protein kg	
+1000	+0.17	+60
	+0.00	+34

gRZE	Total Conformation Index	124
Daugh. 0 / Herds 0	Rel. 80%	
Dairy Type	Body	Feet & Legs
104	102	117
	120	

gRZHealth	Total Health Index	Rel. 84%	120
RZudderfit	RZhoof	DDcontrol	RZrepro
108	117	114	111
			107

gRZFE	RZFeedEfficiency	Rel. 42%	92
--------------	------------------	----------	-----------

gRZN	Functional Herd Life	Rel. 74%	121
-------------	----------------------	----------	------------

gRZS	Somatic Cell Count	Rel. 79%	116
-------------	--------------------	----------	------------

gRZD	Milking Speed	Rel. 78%	99
-------------	---------------	----------	-----------

gRZR	Daughter Fertility	Rel. 61%	102
-------------	--------------------	----------	------------

gRZRobot	Robot Index	Rel. 74%	118
-----------------	-------------	----------	------------

gRZPers	Persistence	Rel. 79%	121
----------------	-------------	----------	------------

gRZcalfit	Calf Health	Rel. 85%	88
------------------	-------------	----------	-----------

gRZKd	Calving paternal	Rel. 96%	104
Calving Ease			

gRZKm	Calving maternal	Rel. 76%	109
--------------	------------------	----------	------------

Sire Fertility			-
-----------------------	--	--	----------

Camus (VH Crown x Semino)	Peak Chilton (S.: AltaRobson)	Fantasy Allmei Sharpe (S.: Alta1stClass)
WEH Qualita VG-87 2/2 lac 11561 4.32 499 3.78 437 best lac 2 12690 4.26 540 3.79 481	WEH Quanta VG-85 4/3 lac 12086 3.82 462 3.44 416 best lac 3 14026 3.97 557 3.42 479	WEH Queen VG-86 5/4 lac 13724 3.18 437 3.21 441 best lac 2 14740 3.06 451 3.18 468

Linear Profile	88	100	112	124
Stature	small			tall 103
Rib Structure	flat			arched 99
Body Depth	shallow			deep 100
Strength	frail			strong 100
Rump Angle	ascending			sloped 98
Rump Width	narrow			wide 99
Rear Leg Set Side View	posty			sickled 108
Foot Angle	low angle			steep 101
Hock Quality	swollen			dry 104
Rear Legs Rear View	hock-in			parallel 116
Front Feet Orientation	outward			straight 105
Locomotion	bad			good 116
Rear Udder Height	low			high 115
Suspensory Ligament	weak			strong 92
Teat Placement Front	wide			close 107
Teat Placement Rear	wide			close 100
Fore Udder Attachment	loose			tight 116
Udder Balance	rear deep			front deep 107
Udder Depth	deep			shallow 120
Teat Length	short			long 113



Granddam:
WEH Quanta VG-85



4th dam:
WEH Quintina VG-86

WSH COMEDY



DEU 276000365193677 • German Reg. No. 10.833677

born: 07/30/2023

Breeder: Wiechering-Sudmann KG, Diepholz, Germany

aAa 342 K-Cn: AB β-Cn: A2/A2

HIGH PRODUCTION & FAT · PERFECT AMS SUITABILITY · SHA GRUMETI VG-87 FAMILY

Comeback (Commitment x Entity)	Beachboy (S.: Bali)	Silverridge V Timberlake (S.: Imax)
WSH Great GP-83 2/1 lac 12106 3.75 454 3.54 429	MB Garantie VG-87 4/3 lac 14817 3.78 560 3.39 502 best lac 3 16193 3.87 627 3.33 539	SHA Guave



gRZG Total Merit Index	147	gRZ€ Economic Total Merit	2349€
----------------------------------	------------	-------------------------------------	--------------

gRZorganic	Organic Total Merit	Rel. 86%	137
-------------------	---------------------	----------	------------

gRZM	Milk Production Index	138		
Daugh. 0 / Herds 0	Rel. 79%			
Milk kg	Fat %	Fat kg	Protein %	Protein kg
+1631	+0.16	+84	+0.05	+62

gRZE	Total Conformation Index	123	
Daugh. 0 / Herds 0	Rel. 80%		
Dairy Type	Body	Feet & Legs	Udder
114	111	112	115

gRZHealth	Total Health Index	Rel. 83%	116	
RZudderfit	RZhoof	DDcontrol	RZrepro	RZmetabol
106	113	111	105	111

gRZFE	RZFeedEfficiency	Rel. 41%	97
--------------	------------------	----------	-----------

gRZN	Functional Herd Life	Rel. 72%	122
-------------	----------------------	----------	------------

gRZS	Somatic Cell Count	Rel. 78%	102
-------------	--------------------	----------	------------

gRZD	Milking Speed	Rel. 78%	107
-------------	---------------	----------	------------

gRZR	Daughter Fertility	Rel. 59%	113
-------------	--------------------	----------	------------

gRZRobot	Robot Index	Rel. 74%	122
-----------------	-------------	----------	------------

gRZPers	Persistence	Rel. 78%	106
----------------	-------------	----------	------------

gRZcalfit	Calf Health	Rel. 66%	103
------------------	-------------	----------	------------

gRZKd Calving Ease	Calving paternal	Rel. 89%	111
---------------------------	------------------	----------	------------

gRZKm	Calving maternal	Rel. 76%	109
--------------	------------------	----------	------------

Sire Fertility			-
-----------------------	--	--	----------

Linear Profile	88	100	112	124
Stature	small			tall 97
Rib Structure	flat			arched 110
Body Depth	shallow			deep 104
Strength	frail			strong 105
Rump Angle	ascending			sloped 109
Rump Width	narrow			wide 109
Rear Leg Set Side View	posty			sickled 106
Foot Angle	low angle			steep 100
Hock Quality	swollen			dry 102
Rear Legs Rear View	hock-in			parallel 106
Front Feet Orientation	outward			straight 120
Locomotion	bad			good 113
Rear Udder Height	low			high 116
Suspensory Ligament	weak			strong 92
Teat Placement Front	wide			close 98
Teat Placement Rear	wide			close 95
Fore Udder Attachment	loose			tight 115
Udder Balance	rear deep			front deep 102
Udder Depth	deep			shallow 108
Teat Length	short			long 111



Dam:
WSH Great GP-83 1.La



Granddam:
MB Timberlake Garantie VG-87

CRANIUM



DEU 276000365764038 • German Reg. No. 10.833708

born: 01/30/2024

Breeder: Franz Meyer, Friesoythe, Germany

aAa 243 K-Cn: BB β-Cn: A2/A2



gRZG	148	gRZ€	2259€
Total Merit Index		Economic Total Merit	

gRZorganic	Organic Total Merit	Rel. 86%	138
-------------------	---------------------	----------	------------

gRZM	Milk Production Index	134		
Daugh. 0 / Herds 0	Rel. 79%			
Milk kg	Fat %	Fat kg	Protein %	Protein kg
+1227	+0.12	+63	+0.18	+64

gRZE	Total Conformation Index	125	
Daugh. 0 / Herds 0	Rel. 80%		
Dairy Type	Body	Feet & Legs	Udder
118	105	113	118

gRZHealth	Total Health Index	Rel. 83%	115	
RZudderfit	RZhoof	DDcontrol	RZrepro	RZmetabol
101	110	112	114	111

gRZFE	RZFeedEfficiency	Rel. 41%	95
--------------	------------------	----------	-----------

gRZN	Functional Herd Life	Rel. 72%	128
-------------	----------------------	----------	------------

gRZS	Somatic Cell Count	Rel. 78%	106
-------------	--------------------	----------	------------

gRZD	Milking Speed	Rel. 78%	90
-------------	---------------	----------	-----------

gRZR	Daughter Fertility	Rel. 59%	127
-------------	--------------------	----------	------------

gRZRobot	Robot Index	Rel. 73%	108
-----------------	-------------	----------	------------

gRZPers	Persistence	Rel. 78%	107
----------------	-------------	----------	------------

gRZcalfit	Calf Health	Rel. 63%	90
------------------	-------------	----------	-----------

gRZKd	Calving paternal	Rel. 71%	111
Calving Ease			

gRZKm	Calving maternal	Rel. 76%	101
--------------	------------------	----------	------------

Sire Fertility			
-----------------------	--	--	--

Winstar Comeback (Commitment x Entity)	SHA Foreman (S.: Freemax)	Peak Chilton (S.: AltaRobson)
MAR Cressy VG-86 2/2 lac 11473 3.60 413 3.79 435 best lac 2 11062 3.91 433 4.19 463	Cremona Mr VG-85 2/1 lac 11514 4.08 470 3.74 431	Cella VG-85 5/5 lac 11818 3.67 434 3.59 424 best lac 3 12521 3.83 480 3.73 467

Linear Profile	88	100	112	124
Stature	small			tall 102
Rib Structure	flat			arched 108
Body Depth	shallow			deep 105
Strength	frail			strong 99
Rump Angle	ascending			sloped 113
Rump Width	narrow			wide 101
Rear Leg Set Side View	posty			sickled 110
Foot Angle	low angle			steep 96
Hock Quality	swollen			dry 108
Rear Legs Rear View	hock-in			parallel 109
Front Feet Orientation	outward			straight 98
Locomotion	bad			good 113
Rear Udder Height	low			high 115
Suspensory Ligament	weak			strong 103
Teat Placement Front	wide			close 104
Teat Placement Rear	wide			close 106
Fore Udder Attachment	loose			tight 113
Udder Balance	rear deep			front deep 92
Udder Depth	deep			shallow 113
Teat Length	short			long 109



Dam:
MAR Cressy VG-86



Granddam:
Cremona Mr VG-85

EVERETT

DEU 276000365971007 • German Reg. No. 10.833716

born: 04/11/2024

Breeder: Hans u. Stephan Perk GbR, Spahnharrenstätte, Germany

aAa 243 K-Cn: AB β-Cn: A2/A2

HIGH MILK & BUTTERFAT YIELD · STRENGTH & WIDTH · UDDER HEALTH

Wilra SSI Regal Enclave (Regal x Legacy)	Fellani (S.: Freemax)	Lenovo (S.: Legendary)
Instagram VG-85 1/1 lac 12568 4.26 536 3.76 473	Iske VG-86 3/2 lac 12050 4.49 541 3.90 470 best lac 2 12971 4.54 589 3.85 499	Ista VG-88 4/3 lac 12974 3.80 493 3.51 456 best lac 3 14860 3.80 565 3.57 531

Linear Profile	88	100	112	124
Stature	small			tall 119
Rib Structure	flat			arched 113
Body Depth	shallow			deep 109
Strength	frail			strong 118
Rump Angle	ascending			sloped 102
Rump Width	narrow			wide 113
Rear Leg Set Side View	posty			sickled 101
Foot Angle	low angle			steep 103
Hock Quality	swollen			dry 95
Rear Legs Rear View	hock-in			parallel 103
Front Feet Orientation	outward			straight 122
Locomotion	bad			good 106
Rear Udder Height	low			high 114
Suspensory Ligament	weak			strong 103
Teat Placement Front	wide			close 117
Teat Placement Rear	wide			close 112
Fore Udder Attachment	loose			tight 118
Udder Balance	rear deep			front deep 108
Udder Depth	deep			shallow 115
Teat Length	short			long 98



gRZG Total Merit Index	147	gRZ€ Economic Total Merit	2363€
----------------------------------	------------	-------------------------------------	--------------

gRZorganic	Organic Total Merit	Rel. 86%	137
-------------------	---------------------	----------	------------

gRZM	Milk Production Index	144		
Daugh. 0 / Herds 0	Rel. 79%			
Milk kg	Fat %	Fat kg	Protein %	Protein kg
+1520	+0.35	+102	+0.15	+71

gRZE	Total Conformation Index	123	
Daugh. 0 / Herds 0	Rel. 80%		
Dairy Type	Body	Feet & Legs	Udder
105	117	105	119

gRZHealth	Total Health Index	Rel. 83%	112	
RZudderfit	RZhoof	DDcontrol	RZrepro	RZmetabol
108	105	104	101	108

gRZFE	RZFeedEfficiency	Rel. 40%	100
--------------	------------------	----------	------------

gRZN	Functional Herd Life	Rel. 72%	115
-------------	----------------------	----------	------------

gRZS	Somatic Cell Count	Rel. 78%	106
-------------	--------------------	----------	------------

gRZD	Milking Speed	Rel. 77%	103
-------------	---------------	----------	------------

gRZR	Daughter Fertility	Rel. 58%	106
-------------	--------------------	----------	------------

gRZRobot	Robot Index	Rel. -%	-
-----------------	-------------	---------	----------

gRZPers	Persistence	Rel. 78%	95
----------------	-------------	----------	-----------

gRZcalfit	Calf Health	Rel. 62%	101
------------------	-------------	----------	------------

gRZKd	Calving paternal	Rel. 71%	106
Calving Ease			

gRZKm	Calving maternal	Rel. 75%	111
--------------	------------------	----------	------------

Sire Fertility			-
-----------------------	--	--	----------



Dam:
Instagram VG-85 1.La



Granddam:
Iske VG-86 1. La

ZUCHTBETRIEB BÖTTJER METEORIT



DEU 276000366314794 • German Reg. No. 10.833733

born: 08/01/2024

Breeder: Henning Boettjer, Gnarrenburg, Germany

K-Cn: AB β-Cn: A2/A2



HIGH PRODUCTION SIRE · UDDER HEALTH · DAUGHTER FERTILITY

Metcalf (Mahomes x Lionel)	KAX Gladius (S.: Gazebo)	SH Gigabyte (S.: Gymnast)
ZB Merida GP-84 2/1 lac 13050 3.68 480 3.36 439	ZB Manu GP-82 4/3 lac 11106 3.57 396 3.49 388 best lac 3 12930 3.70 478 3.51 454	ZB Madame VG-89 5/4 lac 13026 3.59 467 3.33 434 best lac 3 15706 3.35 526 3.17 498

gRZG Total Merit Index	155	gRZ€ Economic Total Merit	3133€
----------------------------------	------------	-------------------------------------	--------------

gRZorganic	Organic Total Merit	Rel. 86%	144
-------------------	---------------------	----------	------------

gRZM	Milk Production Index	154		
Daugh. 0 / Herds 0	Rel. 78%			
Milk kg	Fat %	Fat kg	Protein %	Protein kg
+1846	+0.44	+128	+0.17	+86

gRZE	Total Conformation Index	107	
Daugh. 0 / Herds 0	Rel. 79%		
Dairy Type	Body	Feet & Legs	Udder
104	102	101	107

gRZHealth	Total Health Index	Rel. 83%	117	
RZudderfit	RZhoof	DDcontrol	RZrepro	RZmetabol
107	110	106	113	107

gRZFE	RZFeedEfficiency	Rel. 41%	104
--------------	------------------	----------	------------

gRZN	Functional Herd Life	Rel. 72%	122
-------------	----------------------	----------	------------

gRZS	Somatic Cell Count	Rel. 77%	109
-------------	--------------------	----------	------------

gRZD	Milking Speed	Rel. 77%	102
-------------	---------------	----------	------------

gRZR	Daughter Fertility	Rel. 58%	114
-------------	--------------------	----------	------------

gRZRobot	Robot Index	Rel. -%	-
-----------------	-------------	---------	----------

gRZPers	Persistence	Rel. 77%	110
----------------	-------------	----------	------------

gRZcalfit	Calf Health	Rel. 61%	117
------------------	-------------	----------	------------

gRZKd	Calving paternal	Rel. 71%	97
Calving Ease			

gRZKm	Calving maternal	Rel. 74%	114
--------------	------------------	----------	------------

Sire Fertility			-
-----------------------	--	--	----------

Linear Profile	88	100	112	124
Stature	small			tall
Rib Structure	flat			arched
Body Depth	shallow			deep
Strength	frail			strong
Rump Angle	ascending			sloped
Rump Width	narrow			wide
Rear Leg Set Side View	posty			sickled
Foot Angle	low angle			steep
Hock Quality	swollen			dry
Rear Legs Rear View	hock-in			parallel
Front Feet Orientation	outward			straight
Locomotion	bad			good
Rear Udder Height	low			high
Suspensory Ligament	weak			strong
Teat Placement Front	wide			close
Teat Placement Rear	wide			close
Fore Udder Attachment	loose			tight
Udder Balance	rear deep			front deep
Udder Depth	deep			shallow
Teat Length	short			long



4th dam:
ZB Miriam VG-87



5th dam:
EDG Supersire Mata VG-88

BBS PIKBUBE



DEU 276000365216635 • German Reg. No. 10.833701

born: 01/21/2024

Breeder: Benninghoff Böttjer Syndikat, Gnarrenburg, Germany

aAa 342 K-Cn: AB β-Cn: A2/A2



MILK PRODUCTION · COMPONENT SPECIALIST · FROM THE WILLEM'S HOEVE RITA'S

GPH Picard (Pikachu x Casino)	Hunting (S.: Honda)	VH Hedelund Charley Crown (S.: DG Charley)
Rarität VG-86 2/1 lac 10691 5.24 560 4.16 445	Royal GP-84 3/3 lac 11985 4.22 506 3.58 429 best lac 2 12207 4.29 524 3.70 452	Rena VG-86 5/4 lac 11913 4.29 511 3.64 434 best lac 3 13462 4.23 570 3.54 477

gRZG Total Merit Index	151	gRZ€ Economic Total Merit	2697€
----------------------------------	------------	-------------------------------------	--------------

gRZorganic	Organic Total Merit	Rel. 86%	137
-------------------	---------------------	----------	------------

gRZM	Milk Production Index	158		
Daugh. 0 / Herds 0		Rel. 79%		
Milk kg	Fat %	Fat kg	Protein %	Protein kg
+1569	+0.58	+133	+0.33	+94

gRZE	Total Conformation Index	125	
Daugh. 0 / Herds 0		Rel. 80%	
Dairy Type	Body	Feet & Legs	Udder
121	114	114	112

gRZHealth	Total Health Index	Rel. 83%	110	
RZudderfit	RZhoof	DDcontrol	RZrepro	RZmetabol
105	110	106	97	107

gRZFE	RZFeedEfficiency	Rel. 40%	91
--------------	------------------	----------	-----------

gRZN	Functional Herd Life	Rel. 72%	114
-------------	----------------------	----------	------------

gRZS	Somatic Cell Count	Rel. 78%	95
-------------	--------------------	----------	-----------

gRZD	Milking Speed	Rel. 78%	98
-------------	---------------	----------	-----------

gRZR	Daughter Fertility	Rel. 58%	85
-------------	--------------------	----------	-----------

gRZRobot	Robot Index	Rel. 73%	114
-----------------	-------------	----------	------------

gRZPers	Persistence	Rel. 78%	102
----------------	-------------	----------	------------

gRZcalfit	Calf Health	Rel. 63%	104
------------------	-------------	----------	------------

gRZKd	Calving paternal	Rel. 71%	104
Calving Ease			

gRZKm	Calving maternal	Rel. 76%	98
--------------	------------------	----------	-----------

Sire Fertility			-
-----------------------	--	--	----------

Linear Profile	88	100	112	124
Stature	small			tall 109
Rib Structure	flat			arched 107
Body Depth	shallow			deep 107
Strength	frail			strong 102
Rump Angle	ascending			sloped 92
Rump Width	narrow			wide 115
Rear Leg Set Side View	posty			sickled 109
Foot Angle	low angle			steep 108
Hock Quality	swollen			dry 108
Rear Legs Rear View	hock-in			parallel 105
Front Feet Orientation	outward			straight 106
Locomotion	bad			good 110
Rear Udder Height	low			high 120
Suspensory Ligament	weak			strong 96
Teat Placement Front	wide			close 107
Teat Placement Rear	wide			close 97
Fore Udder Attachment	loose			tight 105
Udder Balance	rear deep			front deep 103
Udder Depth	deep			shallow 102
Teat Length	short			long 104



Granddam:
Royal GP-84



Great Granddam:
Rena VG-86

ROCKABILLY



DEU 276000365990953 • German Reg. No. 10.833732

born: 07/19/2024

Breeder: Markus Hesse, Basdahl, Germany

aAa 432 K-Cn: BB β-Cn: A2/A2



COMPONENT IMPROVER · DAUGHTER FERTILITY · GREAT FOR CALF FITNESS

Rockwell (Rover x Calvin)	Pellegrino (S.: Topnotch)	Peak Chilton (S.: AltaRobson)
Lotusblume GP-84 1/1 lac 11666 3.77 440 3.54 413	Chilton 48 VG-86 3/2 lac 10134 4.20 426 3.73 378 best lac 2 10600 4.27 453 3.86 409	Federal Laola EX-90 5/4 lac 9093 3.72 338 3.62 329 best lac 2 12014 3.60 433 3.55 426

gRZG Total Merit Index	152	gRZ€ Economic Total Merit	2539€
----------------------------------	------------	-------------------------------------	--------------

gRZorganic	Organic Total Merit	Rel. 86%	139
-------------------	---------------------	----------	------------

gRZM	Milk Production Index	138		
Daugh. 0 / Herds 0	Rel. 78%			
Milk kg	Fat %	Fat kg	Protein %	Protein kg
+1084	+0.38	+87	+0.21	+62

gRZE	Total Conformation Index	124	
Daugh. 0 / Herds 0	Rel. 79%		
Dairy Type	Body	Feet & Legs	Udder
113	101	115	119

gRZHealth	Total Health Index	Rel. 83%	121	
RZudderfit	RZhoof	DDcontrol	RZrepro	RZmetabol
106	118	119	114	110

gRZFE	RZFeedEfficiency	Rel. 40%	87
--------------	------------------	----------	-----------

gRZN	Functional Herd Life	Rel. 72%	120
-------------	----------------------	----------	------------

gRZS	Somatic Cell Count	Rel. 77%	114
-------------	--------------------	----------	------------

gRZD	Milking Speed	Rel. 77%	96
-------------	---------------	----------	-----------

gRZR	Daughter Fertility	Rel. 57%	125
-------------	--------------------	----------	------------

gRZRobot	Robot Index	Rel. 72%	113
-----------------	-------------	----------	------------

gRZPers	Persistence	Rel. 77%	105
----------------	-------------	----------	------------

gRZcalfit	Calf Health	Rel. 61%	112
------------------	-------------	----------	------------

gRZKd	Calving paternal	Rel. 71%	106
Calving Ease			

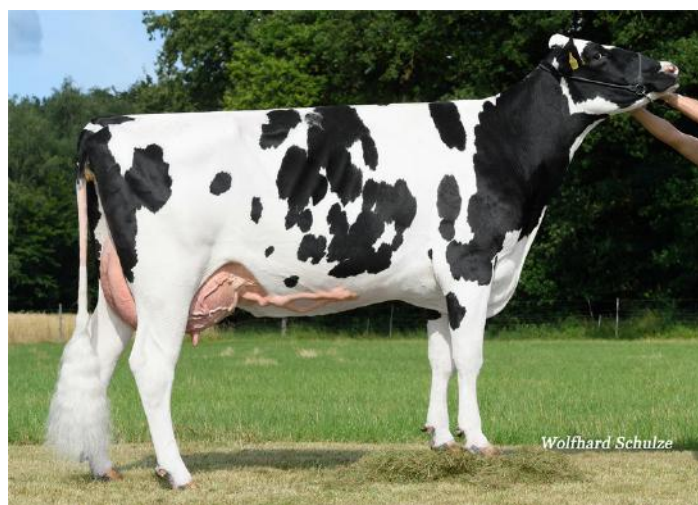
gRZKm	Calving maternal	Rel. 75%	116
--------------	------------------	----------	------------

Sire Fertility			-
-----------------------	--	--	----------

Linear Profile	88	100	112	124
Stature	small			tall
Rib Structure	flat			arched
Body Depth	shallow			deep
Strength	frail			strong
Rump Angle	ascending			sloped
Rump Width	narrow			wide
Rear Leg Set Side View	posty			sickled
Foot Angle	low angle			steep
Hock Quality	swollen			dry
Rear Legs Rear View	hock-in			parallel
Front Feet Orientation	outward			straight
Locomotion	bad			good
Rear Udder Height	low			high
Suspensory Ligament	weak			strong
Teat Placement Front	wide			close
Teat Placement Rear	wide			close
Fore Udder Attachment	loose			tight
Udder Balance	rear deep			front deep
Udder Depth	deep			shallow
Teat Length	short			long



Dam:
Lotusblume GP-84 1.La



Great Granddam:
WSH Laola EX-90

SORANJO



DEU 276000365881789 • German Reg. No. 10.833694

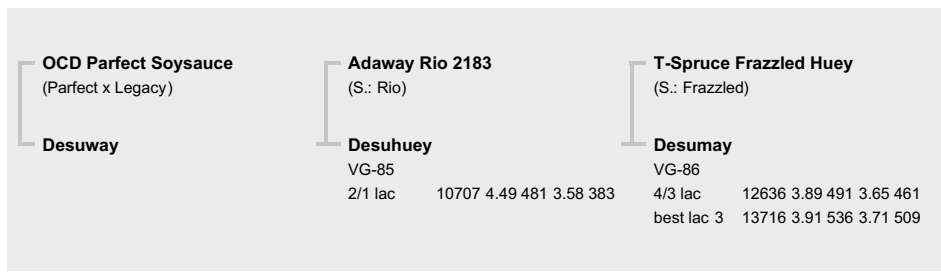
born: 11/19/2023

Breeder: Ruprecht und MASTERRIND, Verden, Germany

aAa 534 K-Cn: BB β-Cn: A2/A2



GREAT PRODUCTION SIRE · MODERN BARN COW · SULLY SHOTTLE MAY-TW EX-91 FAMILY



gRZG	149	gRZ€	2535€
Total Merit Index		Economic Total Merit	

gRZorganic	Organic Total Merit	Rel. 86%	142
-------------------	---------------------	----------	------------

gRZM	Milk Production Index	139		
Daugh. 0 / Herds 0	Rel. 79%			
Milk kg	Fat %	Fat kg	Protein %	Protein kg
+2040	+0.03	+85	-0.04	+65

gRZE	Total Conformation Index	117	
Daugh. 0 / Herds 0	Rel. 80%		
Dairy Type	Body	Feet & Legs	Udder
97	104	113	113

gRZHealth	Total Health Index	Rel. 83%	117	
RZudderfit	RZhoof	DDcontrol	RZrepro	RZmetabol
109	115	112	105	106

gRZFE	RZFeedEfficiency	Rel. 40%	103
--------------	------------------	----------	------------

gRZN	Functional Herd Life	Rel. 72%	129
-------------	----------------------	----------	------------

gRZS	Somatic Cell Count	Rel. 78%	125
-------------	--------------------	----------	------------

gRZD	Milking Speed	Rel. 77%	101
-------------	---------------	----------	------------

gRZR	Daughter Fertility	Rel. 59%	98
-------------	--------------------	----------	-----------

gRZRobot	Robot Index	Rel. 73%	118
-----------------	-------------	----------	------------

gRZPers	Persistence	Rel. 78%	117
----------------	-------------	----------	------------

gRZcalfit	Calf Health	Rel. 63%	115
------------------	-------------	----------	------------

gRZKd	Calving paternal	Rel. 73%	101
Calving Ease			

gRZKm	Calving maternal	Rel. 76%	111
--------------	------------------	----------	------------

Sire Fertility			-
-----------------------	--	--	----------

Linear Profile		88	100	112	124		
Stature	small					tall	91
Rib Structure	flat					arched	100
Body Depth	shallow					deep	100
Strength	frail					strong	100
Rump Angle	ascending					sloped	100
Rump Width	narrow					wide	107
Rear Leg Set Side View	posty					sickled	103
Foot Angle	low angle					steep	105
Hock Quality	swollen					dry	103
Rear Legs Rear View	hock-in					parallel	107
Front Feet Orientation	outward					straight	106
Locomotion	bad					good	112
Rear Udder Height	low					high	121
Suspensory Ligament	weak					strong	105
Teat Placement Front	wide					close	106
Teat Placement Rear	wide					close	100
Fore Udder Attachment	loose					tight	107
Udder Balance	rear deep					front deep	101
Udder Depth	deep					shallow	101
Teat Length	short					long	107



Fullsister to 6th dam:
De-Su 520 EX-90



7th dam:
Sully Shottle May-TW EX-91

PEAK SOYLENT



DEU 276001407106134 • German Reg. No. 10.833727

born: 06/08/2024

Breeder: PEAK Genetics, Watertown, WI, USA

aAa 345 K-Cn: BB β-Cn: A2/A2



PRODUCTION IMPROVER · LOW-STATURE COWS · OMAN MIRROR VG-86 FAMILY



gRZG	146	gRZ€	2516€
Total Merit Index		Economic Total Merit	

gRZorganic	Organic Total Merit	Rel. 86%	137
-------------------	---------------------	----------	------------

gRZM	Milk Production Index				145
Daugh. 0 / Herds 0					Rel. 79%
Milk kg	Fat %	Fat kg	Protein %	Protein kg	
+1904	+0.19	+99	+0.08	+75	

gRZE	Total Conformation Index			108
Daugh. 0 / Herds 0				Rel. 79%
Dairy Type	Body	Feet & Legs	Udder	
107	99	102	108	

gRZHealth	Total Health Index				Rel. 83%	114
RZudderfit	RZhoof	DDcontrol	RZrepro	RZmetabol		
111	109	112	103	104		

gRZFE	RZFeedEfficiency	Rel. 40%	92
--------------	------------------	----------	-----------

gRZN	Functional Herd Life	Rel. 71%	120
-------------	----------------------	----------	------------

gRZS	Somatic Cell Count	Rel. 78%	114
-------------	--------------------	----------	------------

gRZD	Milking Speed	Rel. 77%	100
-------------	---------------	----------	------------

gRZR	Daughter Fertility	Rel. 59%	108
-------------	--------------------	----------	------------

gRZRobot	Robot Index	Rel. 72%	107
-----------------	-------------	----------	------------

gRZPers	Persistence	Rel. 78%	98
----------------	-------------	----------	-----------

gRZcalfit	Calf Health	Rel. 63%	108
------------------	-------------	----------	------------

gRZKd Calving Ease	Calving paternal	Rel. 71%	97
---------------------------	------------------	----------	-----------

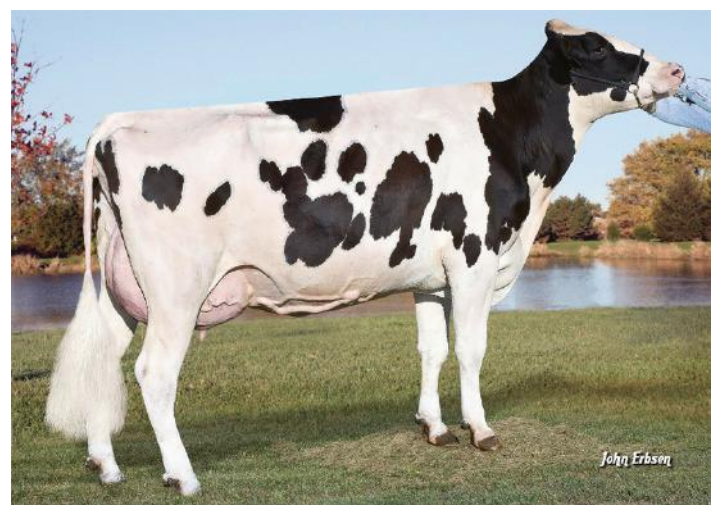
gRZKm	Calving maternal	Rel. 75%	110
--------------	------------------	----------	------------

Sire Fertility			-
-----------------------	--	--	----------

Linear Profile	88	100	112	124
Stature	small			tall
Rib Structure	flat			arched
Body Depth	shallow			deep
Strength	frail			strong
Rump Angle	ascending			sloped
Rump Width	narrow			wide
Rear Leg Set Side View	posty			sickled
Foot Angle	low angle			steep
Hock Quality	swollen			dry
Rear Legs Rear View	hock-in			parallel
Front Feet Orientation	outward			straight
Locomotion	bad			good
Rear Udder Height	low			high
Suspensory Ligament	weak			strong
Teat Placement Front	wide			close
Teat Placement Rear	wide			close
Fore Udder Attachment	loose			tight
Udder Balance	rear deep			front deep
Udder Depth	deep			shallow
Teat Length	short			long



5th dam:
S-S-I Moonry Myesha 9071 VG-85



6th dam:
S-S-I Bookem Modesto 7269 VG-87

ULTRABOY



FRA 250007941621769 • German Reg. No. 10.773104

born: 02/06/2023

Breeder: Peak Genetics, USA

aAa 324156 K-Cn: BB β-Cn: A1/A2



COMPONENT IMPROVER · PERFECT MODERN LINEAR · ROBUST SHIMMER EX-90 FAMILY



gRZG	146	gRZ€	2475€
Total Merit Index		Economic Total Merit	

gRZorganic Organic Total Merit Rel. 87% **139**

gRZM	Milk Production Index			138
Daugh. 0 / Herds 0	Rel. 79%			
Milk kg	Fat %	Fat kg	Protein %	Protein kg
+414	+0.93	+119	+0.28	+45

gRZE	Total Conformation Index			116
Daugh. 0 / Herds 0	Rel. 80%			
Dairy Type	Body	Feet & Legs	Udder	
112	108	98	118	

gRZHealth	Total Health Index			Rel. 84%	119
RZudderfit	RZhoof	DDcontrol	RZrepro	RZmetabol	
108	116	119	107	109	

gRZFE RZFeedEfficiency Rel. 42% **84**

gRZN Functional Herd Life Rel. 73% **120**

gRZS Somatic Cell Count Rel. 78% **108**

gRZD Milking Speed Rel. 78% **100**

gRZR Daughter Fertility Rel. 60% **108**

gRZRobot Robot Index Rel. -% **-**

gRZPers Persistence Rel. 78% **104**

gRZcalfit Calf Health Rel. 63% **116**

gRZKd Calving Ease Calving paternal Rel. 71% **100**

gRZKm Calving maternal Rel. 76% **119**

Sire Fertility -

Linear Profile	88	100	112	124
Stature	small			tall 100
Rib Structure	flat			arched 109
Body Depth	shallow			deep 100
Strength	frail			strong 101
Rump Angle	ascending			sloped 107
Rump Width	narrow			wide 111
Rear Leg Set Side View	posty			sickled 116
Foot Angle	low angle			steep 103
Hock Quality	swollen			dry 99
Rear Legs Rear View	hock-in			parallel 96
Front Feet Orientation	outward			straight 104
Locomotion	bad			good 100
Rear Udder Height	low			high 119
Suspensory Ligament	weak			strong 87
Teat Placement Front	wide			close 123
Teat Placement Rear	wide			close 110
Fore Udder Attachment	loose			tight 121
Udder Balance	rear deep			front deep 95
Udder Depth	deep			shallow 113
Teat Length	short			long 94



5th dam:
OCD Supersire 9882 VG-86



6th dam:
OCD Robust Shimmer EX-90

SYNETICS MEDY RED P



DEU 276000365578344 • German Reg. No. 10.833696

born: 10/15/2023

Breeder: SYNETICS Germany GmbH, Verden, Germany

aAa 354 K-Cn: AB β-Cn: A2/A2



GREAT MILK PRODUCTION · MODERN BARN COWS · RAMOS TOWARD 412 EX-90 FAMILY

Tirsvad 3Star Member PP (Matty P RDC x Solitair P)	Foreman (S.: Freemax)	KNS Simon P (S.: Semino)
DED Talika P MR VG-85 2/1 lac 13429 3.88 521 3.61 485	DED Taleka P GP-84 3/2 lac 8228 4.55 374 3.85 317 best lac 2 8702 4.57 398 3.88 338	DED Talea P GP-84 3/2 lac 11422 3.70 423 3.41 390 best lac 2 13628 3.49 475 3.38 460

gRZG Total Merit Index	142	gRZ€ Economic Total Merit	2195€
----------------------------------	------------	-------------------------------------	--------------

gRZorganic	Organic Total Merit	Rel. 86%	132
-------------------	---------------------	----------	------------

gRZM	Milk Production Index	141		
Daugh. 0 / Herds 0	Rel. 79%			
Milk kg	Fat %	Fat kg	Protein %	Protein kg
+1992	+0.10	+93	-0.02	+67

gRZE	Total Conformation Index	119	
Daugh. 0 / Herds 0	Rel. 79%		
Dairy Type	Body	Feet & Legs	Udder
111	108	117	106

gRZHealth	Total Health Index	Rel. 83%	106	
RZudderfit	RZhoof	DDcontrol	RZrepro	RZmetabol
97	112	110	104	105

gRZFE	RZFeedEfficiency	Rel. 40%	90
--------------	------------------	----------	-----------

gRZN	Functional Herd Life	Rel. 72%	121
-------------	----------------------	----------	------------

gRZS	Somatic Cell Count	Rel. 78%	98
-------------	--------------------	----------	-----------

gRZD	Milking Speed	Rel. 77%	106
-------------	---------------	----------	------------

gRZR	Daughter Fertility	Rel. 59%	106
-------------	--------------------	----------	------------

gRZRobot	Robot Index	Rel. -%	-
-----------------	-------------	---------	----------

gRZPers	Persistence	Rel. 78%	120
----------------	-------------	----------	------------

gRZcalffit	Calf Health	Rel. 63%	92
-------------------	-------------	----------	-----------

gRZKd Calving Ease	Calving paternal	Rel. 78%	105
---------------------------	------------------	----------	------------

gRZKm	Calving maternal	Rel. 75%	98
--------------	------------------	----------	-----------

Sire Fertility			-
-----------------------	--	--	----------

Linear Profile		88	100	112	124		
Stature	small	[Progressive bar from 88 to 124]				tall	91
Rib Structure	flat	[Progressive bar from 88 to 124]				arched	111
Body Depth	shallow	[Progressive bar from 88 to 124]				deep	105
Strength	frail	[Progressive bar from 88 to 124]				strong	108
Rump Angle	ascending	[Progressive bar from 88 to 124]				sloped	98
Rump Width	narrow	[Progressive bar from 88 to 124]				wide	112
Rear Leg Set Side View	posty	[Progressive bar from 88 to 124]				sickled	112
Foot Angle	low angle	[Progressive bar from 88 to 124]				steep	94
Hock Quality	swollen	[Progressive bar from 88 to 124]				dry	114
Rear Legs Rear View	hock-in	[Progressive bar from 88 to 124]				parallel	114
Front Feet Orientation	outward	[Progressive bar from 88 to 124]				straight	109
Locomotion	bad	[Progressive bar from 88 to 124]				good	115
Rear Udder Height	low	[Progressive bar from 88 to 124]				high	118
Suspensory Ligament	weak	[Progressive bar from 88 to 124]				strong	110
Teat Placement Front	wide	[Progressive bar from 88 to 124]				close	109
Teat Placement Rear	wide	[Progressive bar from 88 to 124]				close	118
Fore Udder Attachment	loose	[Progressive bar from 88 to 124]				tight	97
Udder Balance	rear deep	[Progressive bar from 88 to 124]				front deep	112
Udder Depth	deep	[Progressive bar from 88 to 124]				shallow	98
Teat Length	short	[Progressive bar from 88 to 124]				long	100



Dam:
DED Talika MR VG-85



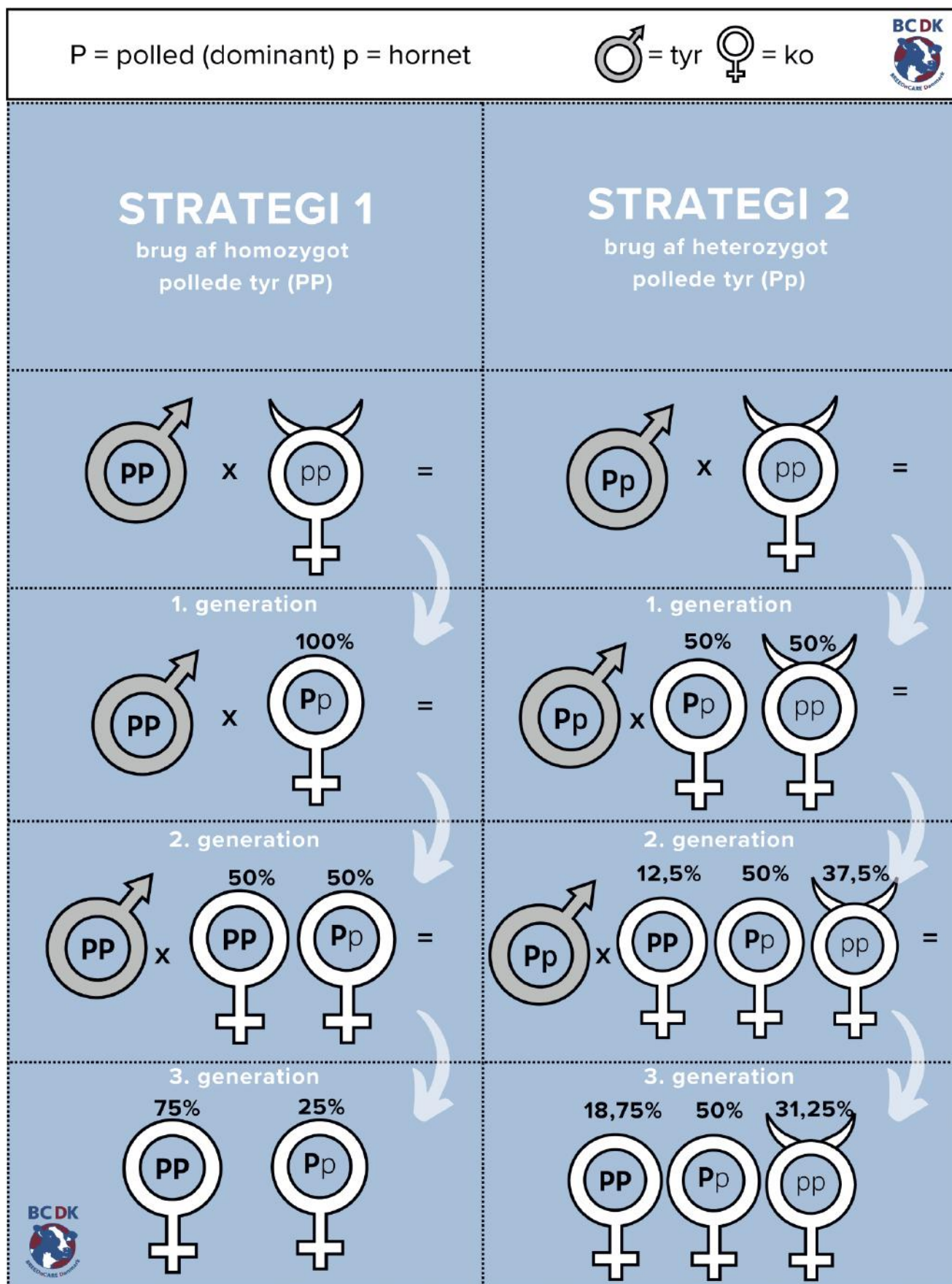
Granddam:
DED Taleka GP-84

Polled

BREEDnCARE tilbyder et stort udvalg af pollede tyre, både P og PP.

Mange af dem kan skaffes som kønssorteret.

Nedenfor ses 2 strategier, der kan anvendes, til at fremavle en 100% pollede besætning.



SYN DOUG PP



DEU 276000365578405 • German Reg. No. 10.833673

born: 08/06/2023

Breeder: SYNETICS Germany GmbH, Verden, Germany

aAa 243 K-Cn: AB β-Cn: A2/A2



POLLED • MODERN MIDDLE-SIZED COW • COMESTAR GOLDWYN LILAC VG-89 FAMILY

Dragon P RDC (Dynamic P x Spark Red)	Peak Nexus (S.: AltaCabot)	Peak Chilton (S.: AltaRobson)
Lima MR P	ELL Lesley P VG-86	ELL Laila P VG-87
1/1 lac 10513 4.12 433 3.96 416	3/3 lac 13229 3.92 518 3.66 484 best lac 3 13951 3.87 540 3.63 507	4/4 lac 14792 4.01 593 3.37 499 best lac 4 17157 4.07 698 3.29 564

Linear Profile	88	100	112	124
Stature	small			tall 96
Rib Structure	flat			arched 101
Body Depth	shallow			deep 94
Strength	frail			strong 108
Rump Angle	ascending			sloped 101
Rump Width	narrow			wide 103
Rear Leg Set Side View	posty			sickled 108
Foot Angle	low angle			steep 110
Hock Quality	swollen			dry 98
Rear Legs Rear View	hock-in			parallel 110
Front Feet Orientation	outward			straight 116
Locomotion	bad			good 108
Rear Udder Height	low			high 90
Suspensory Ligament	weak			strong 98
Teat Placement Front	wide			close 99
Teat Placement Rear	wide			close 98
Fore Udder Attachment	loose			tight 101
Udder Balance	rear deep			front deep 103
Udder Depth	deep			shallow 107
Teat Length	short			long 98

gRZG	136	gRZ€	1732€
Total Merit Index		Economic Total Merit	

gRZorganic	Organic Total Merit	Rel. 86%	137
-------------------	---------------------	----------	------------

gRZM	Milk Production Index	120		
Daugh. 0 / Herds 0	Rel. 79%			
Milk kg	Fat %	Fat kg	Protein %	Protein kg
+1026	+0.02	+43	-0.01	+35

gRZE	Total Conformation Index	105	
Daugh. 0 / Herds 0	Rel. 80%		
Dairy Type	Body	Feet & Legs	Udder
93	106	111	99

gRZHealth	Total Health Index	Rel. 83%	123	
RZudderfit	RZhoof	DDcontrol	RZrepro	RZmetabol
115	112	113	108	109

gRZFE	RZFeedEfficiency	Rel. 41%	104
--------------	------------------	----------	------------

gRZN	Functional Herd Life	Rel. 72%	123
-------------	----------------------	----------	------------

gRZS	Somatic Cell Count	Rel. 78%	123
-------------	--------------------	----------	------------

gRZD	Milking Speed	Rel. 78%	92
-------------	---------------	----------	-----------

gRZR	Daughter Fertility	Rel. 58%	115
-------------	--------------------	----------	------------

gRZRobot	Robot Index	Rel. 73%	108
-----------------	-------------	----------	------------

gRZPers	Persistence	Rel. 78%	103
----------------	-------------	----------	------------

gRZcalfit	Calf Health	Rel. 63%	101
------------------	-------------	----------	------------

gRZKd	Calving paternal	Rel. 81%	94
Calving Ease			

gRZKm	Calving maternal	Rel. 75%	121
--------------	------------------	----------	------------

Sire Fertility			-
-----------------------	--	--	----------



Great Granddam:
ELL Laila VG-87



4th dam:
COL Larissa VG-86

HAVANNA PP



DEU 276000364602029 • German Reg. No. 10.833640

born: 04/12/2023

Breeder: R.u.H. Markus GbR, Werlte, Germany

aAa 342 K-Cn: BB β-Cn: A2/A2



DECENT PRODUCTION AND HIGH COMPONENTS · FUNCTIONAL COWS

WHO Hottop P (Halifax P x My Dream P)	K.N.S. Simon P (S.: Semino)	Mission P RDC (S.: Missouri)
Imperium P GP-84 1/1 lac 11269 3.89 438 3.46 390	MAR Illusion VG-86 5/5 lac 13423 3.88 521 3.48 467 best lac 3 14483 3.87 560 3.39 491	KHE Indiana Mr EX-91 6/6 lac 14200 4.25 604 3.41 484 best lac 4 15392 4.49 691 3.47 534

Linear Profile	88	100	112	124
Stature	small			tall 97
Rib Structure	flat			arched 109
Body Depth	shallow			deep 110
Strength	frail			strong 112
Rump Angle	ascending			sloped 104
Rump Width	narrow			wide 97
Rear Leg Set Side View	posty			sickled 100
Foot Angle	low angle			steep 93
Hock Quality	swollen			dry 106
Rear Legs Rear View	hock-in			parallel 100
Front Feet Orientation	outward			straight 102
Locomotion	bad			good 102
Rear Udder Height	low			high 107
Suspensory Ligament	weak			strong 97
Teat Placement Front	wide			close 100
Teat Placement Rear	wide			close 96
Fore Udder Attachment	loose			tight 103
Udder Balance	rear deep			front deep 126
Udder Depth	deep			shallow 101
Teat Length	short			long 103

gRZG	131	gRZ€	1431€
Total Merit Index		Economic Total Merit	

gRZorganic	Organic Total Merit	Rel. 87%	130
-------------------	---------------------	----------	------------

gRZM	Milk Production Index	122		
Daugh. 0 / Herds 0	Rel. 80%			
Milk kg	Fat %	Fat kg	Protein %	Protein kg
+357	+0.20	+37	+0.28	+43

gRZE	Total Conformation Index	110	
Daugh. 0 / Herds 0	Rel. 80%		
Dairy Type	Body	Feet & Legs	Udder
105	112	103	105

gRZHealth	Total Health Index	Rel. 84%	119	
RZudderfit	RZhoof	DDcontrol	RZrepro	RZmetabol
109	124	132	94	111

gRZFE	RZFeedEfficiency	Rel. 42%	88
--------------	------------------	----------	-----------

gRZN	Functional Herd Life	Rel. 73%	119
-------------	----------------------	----------	------------

gRZS	Somatic Cell Count	Rel. 79%	110
-------------	--------------------	----------	------------

gRZD	Milking Speed	Rel. 78%	94
-------------	---------------	----------	-----------

gRZR	Daughter Fertility	Rel. 60%	101
-------------	--------------------	----------	------------

gRZRobot	Robot Index	Rel. -%	-
-----------------	-------------	---------	----------

gRZPers	Persistence	Rel. 79%	113
----------------	-------------	----------	------------

gRZcalfit	Calf Health	Rel. 68%	92
------------------	-------------	----------	-----------

gRZKd	Calving paternal	Rel. 88%	105
Calving Ease			

gRZKm	Calving maternal	Rel. 76%	101
--------------	------------------	----------	------------

Sire Fertility			-
-----------------------	--	--	----------



Granddam:
MAR Illusion VG-86



6th dam:
KHE Jeeves Illionois VG-88

MOU PP RDC



DEU 276000365734913 • German Reg. No. 10.833723

born: 05/31/2024

Breeder: Michael Brandt, Bremervörde, Germany

aAa 423 K-Cn: BB β-Cn: A2/A2



HIGH MILK FROM SNUG UDDERS · DAUGHTER FERTILITY · ESPANIA EX-91 FAMILY

Mo Red PP (McDonald P x Match P)	Carenzo (S.: VH Crown)	OCD Charley Ranger (S.: DG Charley)
Enigma P	KNO Estella P VG-85	KNO Estrayo P
2/1 lac 9360 3.49 327 3.54 331	2/1 lac 12260 3.10 380 3.56 437	3/2 lac 10368 3.60 373 3.67 381 best lac 2 12945 3.36 435 3.54 458

gRZG	141	gRZ€	1952€
Total Merit Index		Economic Total Merit	

gRZorganic	Organic Total Merit	Rel. 86%	136
-------------------	---------------------	----------	------------

gRZM	Milk Production Index	125		
Daugh. 0 / Herds 0	Rel. 78%			
Milk kg	Fat %	Fat kg	Protein %	Protein kg
+1104	+0.07	+52	+0.05	+44

gRZE	Total Conformation Index	114	
Daugh. 0 / Herds 0	Rel. 79%		
Dairy Type	Body	Feet & Legs	Udder
111	106	101	113

gRZHealth	Total Health Index	Rel. 83%	127	
RZudderfit	RZhoof	DDcontrol	RZrepro	RZmetabol
118	117	126	110	107

gRZFE	RZFeedEfficiency	Rel. 40%	102
--------------	------------------	----------	------------

gRZN	Functional Herd Life	Rel. 72%	120
-------------	----------------------	----------	------------

gRZS	Somatic Cell Count	Rel. 77%	128
-------------	--------------------	----------	------------

gRZD	Milking Speed	Rel. 77%	90
-------------	---------------	----------	-----------

gRZR	Daughter Fertility	Rel. 58%	124
-------------	--------------------	----------	------------

gRZRobot	Robot Index	Rel. -%	-
-----------------	-------------	---------	----------

gRZPers	Persistence	Rel. 77%	99
----------------	-------------	----------	-----------

gRZcalfit	Calf Health	Rel. 63%	104
------------------	-------------	----------	------------

gRZKd	Calving paternal	Rel. 71%	100
Calving Ease			

gRZKm	Calving maternal	Rel. 75%	109
--------------	------------------	----------	------------

Sire Fertility			-
-----------------------	--	--	----------

Linear Profile	88	100	112	124
Stature	small			tall 121
Rib Structure	flat			arched 103
Body Depth	shallow			deep 100
Strength	frail			strong 108
Rump Angle	ascending			sloped 101
Rump Width	narrow			wide 105
Rear Leg Set Side View	posty			sickled 104
Foot Angle	low angle			steep 97
Hock Quality	swollen			dry 93
Rear Legs Rear View	hock-in			parallel 105
Front Feet Orientation	outward			straight 100
Locomotion	bad			good 103
Rear Udder Height	low			high 110
Suspensory Ligament	weak			strong 89
Teat Placement Front	wide			close 108
Teat Placement Rear	wide			close 111
Fore Udder Attachment	loose			tight 111
Udder Balance	rear deep			front deep 93
Udder Depth	deep			shallow 119
Teat Length	short			long 95



Granddam:
KNO Estella VG-85



5th dam:
KNO Escorial VG-85

JEH RAX PP RDC



DEU 276000366482637 • German Reg. No. 10.833735

born: 08/08/2024

Breeder: LüneHöfe KG, Echem, Germany

K-Cn: BB β-Cn: A1/A1



PRODUCTION IMPROVER · TOP FOR LONGEVITY · SHALLOW UDDERS

Rios P RDC (Ridercup x Solitair P) JEH Just Amazing PP GP-84 1/1 lac 16796 4.01 673 3.59 603	Smaug PP (S.: Simon P) JEH Just Hope P VG-86 2/1 lac 14534 4.20 610 3.61 524	Hadi (S.: Hothand) JEH Just Crazy P VG-88 5/4 lac 13709 4.22 578 3.77 517 best lac 4 16623 4.10 682 3.78 628
--	--	---

gRZG	145	gRZ€	2283€
Total Merit Index		Economic Total Merit	

gRZorganic Organic Total Merit Rel. 86% **137**

gRZM Milk Production Index **139**
Daugh. 0 / Herds 0 Rel. 78%
Milk kg Fat % Fat kg Protein % Protein kg
+1744 +0.10 +81 +0.07 +68

gRZE Total Conformation Index **121**
Daugh. 0 / Herds 0 Rel. 79%
Dairy Type Body Feet & Legs Udder
118 100 119 109

gRZHealth Total Health Index Rel. 83% **115**
RZudderfit RZhoof DDcontrol RZrepro RZmetabol
109 113 114 101 106

gRZFE RZFeedEfficiency Rel. 40% **94**

gRZN Functional Herd Life Rel. 72% **124**

gRZS Somatic Cell Count Rel. 77% **115**

gRZD Milking Speed Rel. 77% **104**

gRZR Daughter Fertility Rel. 58% **105**

gRZRobot Robot Index Rel. 72% **108**

gRZPers Persistence Rel. 77% **122**

gRZcalfit Calf Health Rel. 62% **95**

gRZKd Calving paternal Rel. 71% **90**
Calving Ease

gRZKm Calving maternal Rel. 75% **106**

Sire Fertility -

Linear Profile	88	100	112	124
Stature	small			tall 124
Rib Structure	flat			arched 112
Body Depth	shallow			deep 101
Strength	frail			strong 101
Rump Angle	ascending			sloped 105
Rump Width	narrow			wide 101
Rear Leg Set Side View	posty			sickled 100
Foot Angle	low angle			steep 111
Hock Quality	swollen			dry 106
Rear Legs Rear View	hock-in			parallel 113
Front Feet Orientation	outward			straight 90
Locomotion	bad			good 114
Rear Udder Height	low			high 106
Suspensory Ligament	weak			strong 115
Teat Placement Front	wide			close 92
Teat Placement Rear	wide			close 109
Fore Udder Attachment	loose			tight 105
Udder Balance	rear deep			front deep 114
Udder Depth	deep			shallow 115
Teat Length	short			long 91



Dam:
JEH Just Amazing GP-84



Great granddam:
JEH Just Crazy VG-88

SAMU PP



DEU 276000365582110 • German Reg. No. 10.833725

born: 04/28/2024

Breeder: R. u. H. Markus GbR, Werlte, Germany

aAa 513 K-Cn: AB β-Cn: A2/A2



MEDIUM-SIZED, PROFITABLE COWS · HIGH MILK SOLIDS · GOURMETTE EX-94 FAMILY

Samir P (Sinan PP x Chilton) Iceage GP-84 2/1 lac 9472 4.49 425 3.84 364	Samuel P RDC (S.: Solitair P) Inferno VG-86 5/4 lac 10895 4.41 481 3.69 402 best lac 4 13664 4.24 580 3.52 481	Youngster (S.: Yoyo) MAR Illusion VG-86 5/5 lac 13423 3.88 521 3.48 467 best lac 3 14483 3.87 560 3.39 491
--	---	---

Linear Profile		88	100	112	124		
Stature	small	[Progressive bar]				tall	90
Rib Structure	flat	[Progressive bar]				arched	115
Body Depth	shallow	[Progressive bar]				deep	98
Strength	frail	[Progressive bar]				strong	106
Rump Angle	ascending	[Progressive bar]				sloped	112
Rump Width	narrow	[Progressive bar]				wide	104
Rear Leg Set Side View	posty	[Progressive bar]				sickled	94
Foot Angle	low angle	[Progressive bar]				steep	98
Hock Quality	swollen	[Progressive bar]				dry	108
Rear Legs Rear View	hock-in	[Progressive bar]				parallel	101
Front Feet Orientation	outward	[Progressive bar]				straight	109
Locomotion	bad	[Progressive bar]				good	106
Rear Udder Height	low	[Progressive bar]				high	108
Suspensory Ligament	weak	[Progressive bar]				strong	104
Teat Placement Front	wide	[Progressive bar]				close	96
Teat Placement Rear	wide	[Progressive bar]				close	110
Fore Udder Attachment	loose	[Progressive bar]				tight	100
Udder Balance	rear deep	[Progressive bar]				front deep	89
Udder Depth	deep	[Progressive bar]				shallow	96
Teat Length	short	[Progressive bar]				long	101

gRZG	136	gRZ€	1901€
Total Merit Index		Economic Total Merit	

gRZorganic	Organic Total Merit	Rel. 86%	134
-------------------	---------------------	----------	------------

gRZM	Milk Production Index	134		
Daugh. 0 / Herds 0	Rel. 78%			
Milk kg	Fat %	Fat kg	Protein %	Protein kg
+920	+0.29	+70	+0.22	+58

gRZE	Total Conformation Index	108	
Daugh. 0 / Herds 0	Rel. 79%		
Dairy Type	Body	Feet & Legs	Udder
108	102	107	102

gRZHealth	Total Health Index	Rel. 83%	116	
RZudderfit	RZhoof	DDcontrol	RZrepro	RZmetabol
105	112	119	109	109

gRZFE	RZFeedEfficiency	Rel. 41%	97
--------------	------------------	----------	-----------

gRZN	Functional Herd Life	Rel. 72%	119
-------------	----------------------	----------	------------

gRZS	Somatic Cell Count	Rel. 77%	98
-------------	--------------------	----------	-----------

gRZD	Milking Speed	Rel. 77%	99
-------------	---------------	----------	-----------

gRZR	Daughter Fertility	Rel. 58%	95
-------------	--------------------	----------	-----------

gRZRobot	Robot Index	Rel. 71%	103
-----------------	-------------	----------	------------

gRZPers	Persistence	Rel. 77%	111
----------------	-------------	----------	------------

gRZcalfit	Calf Health	Rel. 63%	97
------------------	-------------	----------	-----------

gRZKd	Calving paternal	Rel. 71%	98
Calving Ease			

gRZKm	Calving maternal	Rel. 75%	100
--------------	------------------	----------	------------

Sire Fertility			-
-----------------------	--	--	----------



Dam:
Iceage GP-84



Granddam:
Inferno VG-86

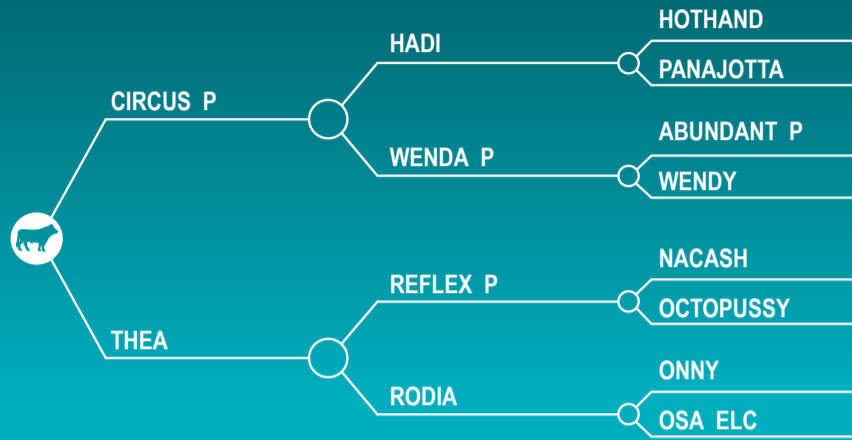
VATICAN PP

NEW PP

FR3511873350

2024-10-29

GAEC BODIN
ARBRISSEL (35)



Reference : 04/2026

RZG 133 % Rel 85

RZ€ 1499 % Rel 87

RZorganic 124 % Rel 86

RZM 126 % Rel 78

RZE 123 % Rel 78

RZS 103 % Rel 77

Milk Production	0 dtrs / 0 herds	
Milk kg	1019	
Fatt %	0.20	
Fatt kg	64	
Protein %	0.04	
Protein kg	40	
KCAS : AA BCAS : A2A2		

Total Conformation	0 dtrs / 0 herds	
Dairy Type	102	
Body	117	
F&L	116	
Udder	113	

GÉNO-SANTÉ			
Health synthesis	1.1		
Retained Placenta	0.3		
Metritis	0.7		

Functional traits		
Feed Efficiency	93	% Rel 40
Functional Herd Life	111	% Rel 71
Daughter Fertility	99	% Rel 57
Milking speed	108	% Rel 77
Calving Ease direct	98	% Rel 70
Calving Ease maternal	104	% Rel 74

Linear profile			
Stature	109		
Rib Structure	103		
Body depth	114		
Strength	112		
Rump angle	109		
Rump width	105		
Rear leg side view	111		
Foot angle	96		
Hock quality	96		
Real leg rear view	123		+
Front Feet Orientation	111		
Rear udder height	119		
Suspensory ligament	104		
Teat Placement Front	85	-	
Teat Placement Rear	84	-	
Fore udder attachment	115		
Udder depth	106		
Test length	103		
Locomotion	118		
Udder Balance	103		

DETJENS FUN RED PP



DEU 276000365279964 • German Reg. No. 10.833700

born: 11/02/2023

Breeder: Henrik & Hans-Peter Detjen GbR, Wohnste, Germany

aAa 432 K-Cn: AB β-Cn: A1/A2



HIGH MILK FROM SHALLOW & HEALTHY UDDERS · GREAT LONGEVITY

Feit Red P (Freestyle x Solitair P)	Sam Red P (S.: Spark Red)	Match P RDC (S.: Mission P)
DW Pandora PP VG-87 3/2 lac 13324 3.92 522 3.87 515 best lac 2 14274 3.85 550 3.87 553	DW Mar Pippi P VG-85 3/2 lac 10111 4.50 455 4.12 417 best lac 2 9360 4.91 460 4.47 418	Pippa Red PP GP-82 3/3 lac 11159 3.24 361 3.39 378 best lac 3 10817 3.79 410 3.37 364

Linear Profile	88	100	112	124
Stature	small			tall 104
Rib Structure	flat			arched 107
Body Depth	shallow			deep 100
Strength	frail			strong 106
Rump Angle	ascending			sloped 106
Rump Width	narrow			wide 100
Rear Leg Set Side View	posty			sickled 92
Foot Angle	low angle			steep 97
Hock Quality	swollen			dry 100
Rear Legs Rear View	hock-in			parallel 115
Front Feet Orientation	outward			straight 118
Locomotion	bad			good 104
Rear Udder Height	low			high 108
Suspensory Ligament	weak			strong 98
Teat Placement Front	wide			close 96
Teat Placement Rear	wide			close 106
Fore Udder Attachment	loose			tight 117
Udder Balance	rear deep			front deep 122
Udder Depth	deep			shallow 120
Teat Length	short			long 98

gRZG	143	gRZ€	2006€
Total Merit Index		Economic Total Merit	

gRZorganic	Organic Total Merit	Rel. 86%	139
-------------------	---------------------	----------	------------

gRZM	Milk Production Index	127		
Daugh. 0 / Herds 0	Rel. 79%			
Milk kg	Fat %	Fat kg	Protein %	Protein kg
+1221	+0.04	+53	+0.06	+49

gRZE	Total Conformation Index	119	
Daugh. 0 / Herds 0	Rel. 79%		
Dairy Type	Body	Feet & Legs	Udder
109	105	108	117

gRZHealth	Total Health Index	Rel. 83%	122	
RZudderfit	RZhoof	DDcontrol	RZrepro	RZmetabol
113	113	112	106	111

gRZFE	RZFeedEfficiency	Rel. 40%	107
--------------	------------------	----------	------------

gRZN	Functional Herd Life	Rel. 72%	126
-------------	----------------------	----------	------------

gRZS	Somatic Cell Count	Rel. 78%	127
-------------	--------------------	----------	------------

gRZD	Milking Speed	Rel. 77%	93
-------------	---------------	----------	-----------

gRZR	Daughter Fertility	Rel. 59%	102
-------------	--------------------	----------	------------

gRZRobot	Robot Index	Rel. 72%	103
-----------------	-------------	----------	------------

gRZPers	Persistence	Rel. 78%	118
----------------	-------------	----------	------------

gRZcalfit	Calf Health	Rel. 63%	104
------------------	-------------	----------	------------

gRZKd	Calving paternal	Rel. 74%	108
Calving Ease			

gRZKm	Calving maternal	Rel. 75%	109
--------------	------------------	----------	------------

Sire Fertility



Granddam:
DW Mar Pippi VG-85



5th dam:
Bookem Peggy VG-87

DW HAY RED PP



DEU 276000366449242 • German Reg. No. 10.833741

born: 11/12/2024

Breeder: Henrik & Hans-Peter Detjen GbR, Wohnste, Germany

K-Cn: BB β-Cn: A1/A1



gRZG	147	gRZ€	2521€
Total Merit Index		Economic Total Merit	

Handout P (Hinnemann 3Star Hugo PP RDC x VH Cro(h):Jayvano)	DG DV Rammstein Red (S.: Jayvano)	Sam Red P (S.: Spark Red)
DW Pamela P VG-85 1/1 lac 12188 4.32 527 3.86 471	DW Pandora PP VG-87 3/2 lac 13324 3.92 522 3.87 515 best lac 2 14274 3.85 550 3.87 553	DW Mar Pippi P VG-85 3/2 lac 10111 4.50 455 4.12 417 best lac 2 9360 4.91 460 4.47 418

gRZorganic	Organic Total Merit	Rel. 86%	137
gRZM	Milk Production Index		144
Daugh. 0 / Herds 0		Rel. 78%	
Milk kg	Fat %	Fat kg	Protein %
+2123	+0.02	+88	+0.04
gRZE	Total Conformation Index		113
Daugh. 0 / Herds 0		Rel. 79%	
Dairy Type	Body	Feet & Legs	Udder
115	106	107	106
gRZHealth	Total Health Index	Rel. 83%	116
RZudderfit	RZhoof	DDcontrol	RZrepro
110	117	120	103
gRZFE	RZFeedEfficiency	Rel. 40%	100
gRZN	Functional Herd Life	Rel. 71%	119
gRZS	Somatic Cell Count	Rel. 77%	117
gRZD	Milking Speed	Rel. 77%	91
gRZR	Daughter Fertility	Rel. 57%	107
gRZRobot	Robot Index	Rel. 72%	107
gRZPers	Persistence	Rel. 77%	117
gRZcalfit	Calf Health	Rel. 62%	106
gRZKd	Calving paternal	Rel. 71%	104
Calving Ease			
gRZKm	Calving maternal	Rel. 74%	108
Sire Fertility			-

Linear Profile	88	100	112	124
Stature	small			tall 116
Rib Structure	flat			arched 107
Body Depth	shallow			deep 101
Strength	frail			strong 99
Rump Angle	ascending			sloped 98
Rump Width	narrow			wide 114
Rear Leg Set Side View	posty			sickled 100
Foot Angle	low angle			steep 97
Hock Quality	swollen			dry 104
Rear Legs Rear View	hock-in			parallel 102
Front Feet Orientation	outward			straight 104
Locomotion	bad			good 107
Rear Udder Height	low			high 113
Suspensory Ligament	weak			strong 93
Teat Placement Front	wide			close 108
Teat Placement Rear	wide			close 98
Fore Udder Attachment	loose			tight 97
Udder Balance	rear deep			front deep 108
Udder Depth	deep			shallow 105
Teat Length	short			long 111



Dam:
DW Pamela P VG-85



Granddam:
DW Pandora VG-87

SHA MAZ RED PP



DEU 276001406595449 • German Reg. No. 10.833583

born: 05/25/2022

Breeder: Agrar GmbH Auligk, Groitzsch, Germany

aAa 243 K-Cn: AB β-Cn: A1/A2



SHOW TYPE SIRE · HIGH COMPONENTS · RALMA JUROR FAITH EX-91 FAMILY

Aprilday McDonald P Red (Ronald x Pat-Red) SHA Chobe GP-83 4/3 lac 12998 3.57 464 3.57 464 best lac 2 14057 3.57 502 3.65 513	Caudumer Solitair P (S.: Salvatore) RS Carmen VG-87 5/5 lac 12110 3.21 389 3.37 408 best lac 5 13714 3.14 431 3.47 476	Mr Pat Uno Pace-Red (S.: Pat-Red) RS Charity EX-90 4/4 lac 11037 3.54 391 3.35 370 best lac 3 12270 3.53 433 3.23 396
--	---	--

gRZG	136	gRZ€	1545€
Total Merit Index		Economic Total Merit	

gRZorganic	Organic Total Merit	Rel. 87%	125
-------------------	---------------------	----------	------------

gRZM	Milk Production Index				124
Daugh. 0 / Herds 0	Rel. 80%				
Milk kg	Fat %	Fat kg	Protein %	Protein kg	
+736	+0.37	+68	+0.06	+32	

gRZE	Total Conformation Index			130
Daugh. 0 / Herds 0	Rel. 81%			
Dairy Type	Body	Feet & Legs	Udder	
118	94	106	137	

gRZHealth	Total Health Index				Rel. 84%	114
RZudderfit	RZhoof	DDcontrol	RZrepro	RZmetabol		
109	106	106	105	108		

gRZFE	RZFeedEfficiency	Rel. 41%	90
--------------	------------------	----------	-----------

gRZN	Functional Herd Life	Rel. 74%	113
-------------	----------------------	----------	------------

gRZS	Somatic Cell Count	Rel. 79%	120
-------------	--------------------	----------	------------

gRZD	Milking Speed	Rel. 78%	91
-------------	---------------	----------	-----------

gRZR	Daughter Fertility	Rel. 61%	109
-------------	--------------------	----------	------------

gRZRobot	Robot Index	Rel. -%	-
-----------------	-------------	---------	----------

gRZPers	Persistence	Rel. 79%	98
----------------	-------------	----------	-----------

gRZcalfit	Calf Health	Rel. 68%	96
------------------	-------------	----------	-----------

gRZKd	Calving paternal	Rel. 82%	105
Calving Ease			

gRZKm	Calving maternal	Rel. 76%	111
--------------	------------------	----------	------------

Sire Fertility	Good
-----------------------	-------------

Linear Profile	88	100	112	124
Stature	small			tall 134
Rib Structure	flat			arched 108
Body Depth	shallow			deep 94
Strength	frail			strong 95
Rump Angle	ascending			sloped 107
Rump Width	narrow			wide 104
Rear Leg Set Side View	posty			sickled 100
Foot Angle	low angle			steep 109
Hock Quality	swollen			dry 96
Rear Legs Rear View	hock-in			parallel 105
Front Feet Orientation	outward			straight 95
Locomotion	bad			good 103
Rear Udder Height	low			high 129
Suspensory Ligament	weak			strong 98
Teat Placement Front	wide			close 122
Teat Placement Rear	wide			close 111
Fore Udder Attachment	loose			tight 125
Udder Balance	rear deep			front deep 112
Udder Depth	deep			shallow 141
Teat Length	short			long 101



Dam:
SHA Chobe GP-83



Granddam:
RS Carmen VG-87

EHL MOB RED PP



DEU 276000365733176 • German Reg. No. 10.833704

born: 01/19/2024

Breeder: Helmut Etmann, Lähden, Germany

aAa 423 K-Cn: AB β-Cn: A2/A2



gRZG	139	gRZ€	1864€
Total Merit Index		Economic Total Merit	

Tirsvad 3Star Member PP (Matty P RDC x Solitair P)	WG Star P RDC (S.: Solitair P)	Gywer RDC (S.: Gymnast)
EHL Schnee VG-85 2/1 lac 12864 3.62 466 3.63 467	Meddy VG-86 3/3 lac 11952 3.66 437 3.77 450 best lac 3 14397 3.60 518 3.63 522	BAG Missy VG-86 5/5 lac 12930 3.83 495 3.47 449 best lac 3 15152 3.72 564 3.44 521

gRZorganic	Organic Total Merit	Rel. 86%	126
-------------------	---------------------	----------	------------

gRZM	Milk Production Index	134		
Daugh. 0 / Herds 0	Rel. 79%			
Milk kg	Fat %	Fat kg	Protein %	Protein kg
+1699	-0.08	+60	+0.05	+65

gRZE	Total Conformation Index	122	
Daugh. 0 / Herds 0	Rel. 79%		
Dairy Type	Body	Feet & Legs	Udder
113	106	110	116

gRZHealth	Total Health Index	Rel. 83%	108	
RZudderfit	RZhoof	DDcontrol	RZrepro	RZmetabol
100	112	113	100	107

gRZFE	RZFeedEfficiency	Rel. 40%	89
--------------	------------------	----------	-----------

gRZN	Functional Herd Life	Rel. 72%	115
-------------	----------------------	----------	------------

gRZS	Somatic Cell Count	Rel. 78%	109
-------------	--------------------	----------	------------

gRZD	Milking Speed	Rel. 77%	95
-------------	---------------	----------	-----------

gRZR	Daughter Fertility	Rel. 59%	109
-------------	--------------------	----------	------------

gRZRobot	Robot Index	Rel. -%	-
-----------------	-------------	---------	----------

gRZPers	Persistence	Rel. 78%	118
----------------	-------------	----------	------------

gRZcalfit	Calf Health	Rel. 63%	96
------------------	-------------	----------	-----------

gRZKd	Calving paternal	Rel. 71%	111
Calving Ease			

gRZKm	Calving maternal	Rel. 75%	115
--------------	------------------	----------	------------

Sire Fertility			-
-----------------------	--	--	----------

Linear Profile		88	100	112	124		
Stature	small					tall	102
Rib Structure	flat					arched	108
Body Depth	shallow					deep	97
Strength	frail					strong	100
Rump Angle	ascending					sloped	100
Rump Width	narrow					wide	117
Rear Leg Set Side View	posty					sickled	103
Foot Angle	low angle					steep	97
Hock Quality	swollen					dry	105
Rear Legs Rear View	hock-in					parallel	109
Front Feet Orientation	outward					straight	100
Locomotion	bad					good	108
Rear Udder Height	low					high	125
Suspensory Ligament	weak					strong	118
Teat Placement Front	wide					close	103
Teat Placement Rear	wide					close	123
Fore Udder Attachment	loose					tight	104
Udder Balance	rear deep					front deep	108
Udder Depth	deep					shallow	109
Teat Length	short					long	122



Dam:
EHL Schnee VG-85



Great Granddam:
BAG Pace Missy VG-86

RON RED PP



DEU 276000365518946 • German Reg. No. 10.833722

born: 04/06/2024

Breeder: DEWIWITA GbR, Stadland, Germany

aAa 423 K-Cn: AB β-Cn: A2/A2



HIGH MILK YIELD · BODY TRAIT IMPROVER · SUCCESSFUL COW FAMILY

3Star TV Ranking P Red (Ranger Red x Solitair P)	Sono P RDC (S.: Solitair P)	Siemers Charley Merryguy (S.: DG Charley)
Party	Pina	Panajotta
1/1 lac 13855 3.83 531 3.33 461	GP-84 3/2 lac 12281 4.02 494 3.29 404 best lac 1 12782 3.94 503 3.17 405	VG-88 4/4 lac 12713 3.83 487 3.48 443 best lac 2 13871 3.81 529 3.55 492

Linear Profile	88	100	112	124
Stature	small			tall 114
Rib Structure	flat			arched 113
Body Depth	shallow			deep 108
Strength	frail			strong 110
Rump Angle	ascending			sloped 103
Rump Width	narrow			wide 113
Rear Leg Set Side View	posty			sickled 113
Foot Angle	low angle			steep 91
Hock Quality	swollen			dry 100
Rear Legs Rear View	hock-in			parallel 103
Front Feet Orientation	outward			straight 112
Locomotion	bad			good 109
Rear Udder Height	low			high 125
Suspensory Ligament	weak			strong 119
Teat Placement Front	wide			close 95
Teat Placement Rear	wide			close 108
Fore Udder Attachment	loose			tight 109
Udder Balance	rear deep			front deep 97
Udder Depth	deep			shallow 111
Teat Length	short			long 95

gRZG	147	gRZ€	2161€
Total Merit Index		Economic Total Merit	

gRZorganic	Organic Total Merit	Rel. 86%	142
-------------------	---------------------	----------	------------

gRZM	Milk Production Index	128		
Daugh. 0 / Herds 0	Rel. 78%			
Milk kg	Fat %	Fat kg	Protein %	Protein kg
+1706	-0.17	+49	-0.05	+53

gRZE	Total Conformation Index	122	
Daugh. 0 / Herds 0	Rel. 78%		
Dairy Type	Body	Feet & Legs	Udder
114	114	103	118

gRZHealth	Total Health Index	Rel. 83%	129	
RZudderfit	RZhoof	DDcontrol	RZrepro	RZmetabol
119	112	111	107	116

gRZFE	RZFeedEfficiency	Rel. 41%	98
--------------	------------------	----------	-----------

gRZN	Functional Herd Life	Rel. 72%	130
-------------	----------------------	----------	------------

gRZS	Somatic Cell Count	Rel. 77%	128
-------------	--------------------	----------	------------

gRZD	Milking Speed	Rel. 77%	88
-------------	---------------	----------	-----------

gRZR	Daughter Fertility	Rel. 58%	107
-------------	--------------------	----------	------------

gRZRobot	Robot Index	Rel. -%	-
-----------------	-------------	---------	----------

gRZPers	Persistence	Rel. 77%	122
----------------	-------------	----------	------------

gRZcalfit	Calf Health	Rel. 62%	101
------------------	-------------	----------	------------

gRZKd	Calving paternal	Rel. 71%	104
Calving Ease			

gRZKm	Calving maternal	Rel. 74%	102
--------------	------------------	----------	------------

Sire Fertility			-
-----------------------	--	--	----------



Dam:
Party 1.La



Granddam:
Pina GP-84

Kødkvægstyre til brugskrydsning

april 2026

Stamb.	NAVN	RACE (*)		Kælvn.- forløb	Fødsels- vægt	Listepris Dkr.
580075 - XY	Alaska - XY	Angus				225
58964	Neil	Angus	Afpr. X-Ind.	110		75
580074	ROC	Angus				65
78516	AltaBluelight	Belgisk BlåHvid		129	74	65
78517	AltaSilverblue	Belgisk BlåHvid		139	67	65
78563	BBG Royale	Belgisk BlåHvid		106	94	65
78562 - XY	Bernard - XY	Belgisk BlåHvid	Afpr.	121	83	225
78575	Bernie P	Belgisk BlåHvid		128	77	65
78633	Falk	Belgisk BlåHvid		124	meget let	65
78512	Gaston P	Belgisk BlåHvid		110	90	65
78566	Lieutenant	Belgisk BlåHvid		113	88	65
78462	Noble	Belgisk BlåHvid	Afpr.	110	92	50
78617	Officier PP	Belgisk BlåHvid		113	89	95
78305	Parquet	Belgisk BlåHvid	Afpr. X-Ind.	120	82	50
78454	Samson	Belgisk BlåHvid	Afpr.	126	79	50
78511	Stef	Belgisk BlåHvid	Afpr. X-Ind.	111	92	88
78564	Winsor	Belgisk BlåHvid		103	93	65
68307	Gaston	Blonde d'Aquitaine	Afpr.	143	63	65
68326	Pirol PP	Blonde d'Aquitaine	Afpr.	97% uden hjælp	let	65
68712	Shuman	Blonde d'Aquitaine	Afpr.			65
72239	Neutron	Charolais		118		65
72228	Norel	Charolais		110		65
72136	Udefix	Charolais	Afpr.	109		65
88078	Punchy	INRA / Yperios 95	Afpr.	108		R 78
67429	Bonito	Piemontese	Afpr.	107	35	S 65

(*) Angus, Blonde d'Aquitaine, Charolais og Piemontese må anvendes i økologiske besætninger.



Zivet - dtr.



Pellegrino - dtr.