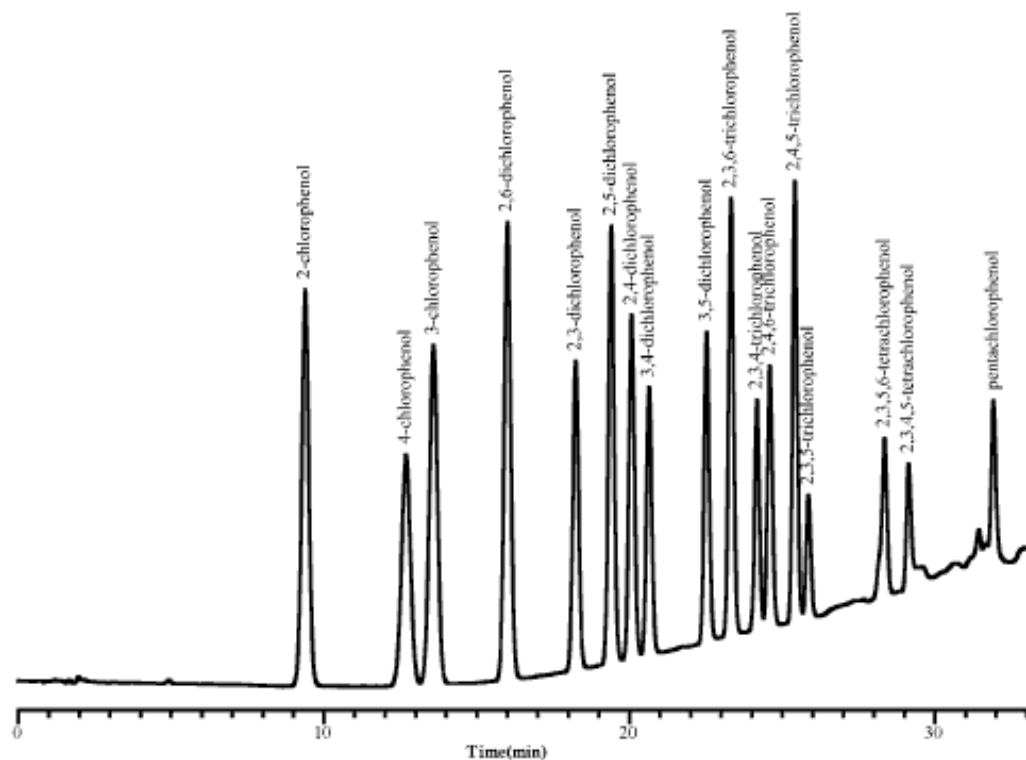


## Analysis of Chlorophenol

Data No. LA329-0000



Column	: Inertsil ODS-3	Solutes	: 1. 2-Chlorophenol
	5µm		2. 4-Chlorophenol
	150 × 4.6 mmI.D.		3. 3-Chlorophenol
Column Cat. No. :	5020-01771		4. 2,6-Dichlorophenol
Eluent	: A, 50% Methanol / 0.1% H <sub>3</sub> PO <sub>4</sub>		5. 2,3-Dichlorophenol
	B, Methanol		6. 2,5-Dichlorophenol
A/B =	100/0 - 10 min. - 100/0 - 20 min. - 20/80		7. 2,4-Dichlorophenol
Flow rate	: 1.0mL/min		8. 3,4-Dichlorophenol
Col. Temp.	: 30°C		9. 3,5-dichlorophenol
Detection	: UV 280nm		10. 2,3,6-Trichlorophenol
Injection Vol.	:		11. 2,3,4-Trichlorophenol
Sample	: Chlorophenol (each 0.1mg/mL)		12. 2,4,6-Trichlorophenol
			13. 2,4,5-Trichlorophenol
			14. 2,3,5-Trichlorophenol
			15. 2,3,5,6-Tetrachlorophenol
			16. 2,3,4,5-Tetrachlorophenol
			17. Pentachlorophenol