

Winchelsea Star

Price \$1

Your Weekly Community Newspaper

Since 1977

Vol 45 Ed 30

Tuesday 2 August 2022

winchelseastar.org.au



Official Opening of Winchelsea Primary School Sensory Garden

On Monday 18th July our school celebrated the Official Opening of our Community Sensory Garden. After many years of planning and preparation, Perry Mills (landscape designer) and the team from Southern Edge Landscaping (Colin and Ash) have made our dream a reality.
Story page 5



Whats on in Winchelsea

YOGA IN WINCHELSEA WITH MONICA

Term 3 starts July 12 - August 13.

Tuesdays, 7pm to 8:15pm
\$190 for the 10 weeks,
\$24 per casual session.

To proceed it needs a minimum of 6 persons paying for full term

Bookings to
monicasfootsteps@bigpond.com

LARGE BAGS FIREWOOD \$5

Winchelsea Mens Shed
Contact 0438083373

WANTED PART TIME CLEANER

3hrs once a fortnight
Private home for busy family
Please call 0417390904
Must have reference

OPENING OF THE WINCHELSEA WAR MEMORIAL

Save the date.
August 21st Sunday, 11 am
at the memorial

The Winchelsea RSL and the Surf Coast Shire have worked very hard to ensure the Memorial is a very special part of the town.

So come along to the opening and commemorate those who served.

This will be a day to get together, remember and enjoy the Geelong Military Re-enactments displays and vehicles.

Because of COVID the opening has been in the making for almost two years, so lets get it done with style.

Contact

Chris Alsop 0405449814 or email
cmawson@iinet.net.au

WINCHELSEA HOSPITAL AUXILIARY ANNUAL MEETING

Monday August 8th, 2pm
at Winchelsea Golf Club

WINCHELSEA CRICKET CLUB

NOTIFICATION OF ANNUAL GENERAL MEETING

The Annual General Meeting of the Winchelsea Cricket Club Inc. will be held at Eastern Reserve

Community Rooms on Sunday 21st August, 2022 at 2.00 p.m.

NOMINATIONS are invited for all positions and must be lodged with the Secretary 2 days prior to the 21 st of August, 2022. Please show your support for your Club and volunteer your services for the Executive and General Committee.

LISA CLIFTON

Secretary Winchelsea Cricket Club

STEPS TO ACCESSING AGED CARE

Your questions answered

Estia Health are holding free information sessions to help you understand and access the support you need.

- Navigating the home care system from home care to residential care (for those requiring more support)
- Accessing Government funding
- The benefits of respite care for you and your carer
- Become a volunteer and make a difference in the lives of those living in residential care
- Demystifying residential home care

WHEN: Monday, August 8th at 11am

WHERE:
Winchelsea Community House,
28 Hesse St

RSVP to Winch House on 5267 2028



Surf COAST SHIRE

HAVE YOUR SAY
on the draft
Communications and Engagement Strategy

Following an initial phase of community input, Council has now put a draft Communications and Engagement Strategy on exhibition and is seeking community feedback.

Make a submission
To view the draft Strategy and make a submission visit
surfcoast.vic.gov.au/CCEstrategy

Feedback is welcome by 5pm Tuesday 23 August.

If you'd like to access a hard copy submission form, please contact us at communications@surfcoast.vic.gov.au or **(03) 5261 0600**.



**CELEBRATING
25 YEARS
WORLD WIDE**



**IMMERSIVE THEATRE AT ITS
STARTLING BEST
BROADWAY BABY**



**SIDE-SPLITTING LAUGHTER
GUARANTEED
SCOTTISH FIELD**



**PERFECT FOR THE WHOLE
FAMILY TO ENJOY
SEE DO EAT**

**FAULTY
Original TOWERS
the Dining Experience**



Winchelsea Hotel

Cnr Princess Hwy & Austin St, Winchelsea

Thursday 18 August 2022

Doors open 6:30pm; show starts 7:00pm

\$90.13 pp (incl. fees), includes a 3-course meal and 2-hour interactive show



1800 BUY TIX (710 499) | www.faultytowersdining.com



Meredith Festival

It's been nearly nine hundred days since the last Meredith Festival. About time we got together.

The Ballot for The 30th Meredith, December 9-11, 2022 is now open, to all comers.

It's simple to enter, and the best way to get tickets. Enter via mmf.com.au before 10:30pm Monday 15 August, 2022, to be in it.

Three days, two nights with friends old and new. A single stage, free range camping, BYO, and no commercial messages.

A weekend on Wadawurrung Country.

Quick Response Grants

NOW OPEN!

Streams:

Small Equipment Purchases
up to \$3,000

Community Initiatives
up to \$2,000

To apply: surfcoast.vic.gov.au/Community/Grants



Don't want a printed bin collection calendar?



Our community has embraced the Surf Coast Rubbish and Recycling App, SCRRApp.

Whether it's for the set-and-forget feature for bin collection reminders, or the easy-to-use A-Z guide to help you sort your waste, SCRRApp has been getting lots of positive feedback and 10,672 downloads can't be wrong.

With SCRRApp downloads increasing every month, we're phasing out printed calendars and checking in to see if more people would like to opt-out of receiving a printed calendar this year.

Printing and posting unwanted bin collection calendars is not sustainable. Opt-out now and help us save paper, printing and postage costs.

If you want to opt-out from receiving a printed calendar, please complete the form at surfcoast.vic.gov.au/Optout or scan the QR code.

If you don't opt-out, we will still print and mail a calendar to you this year. If you opted out from receiving a calendar last year, you don't need to do anything.

REQUESTS MUST BE SUBMITTED BY 5PM ON WEDNESDAY 31 AUGUST.



Calendars for all collection areas will still be available on our website at surfcoast.vic.gov.au/calendars or you can view an updated 12-month bin collection calendar on SCRRApp.



Have you downloaded SCRRApp yet?

- get scheduled reminders about bin night
- view and download your collection calendar
- check what goes in each bin
- receive notifications when there is a change to the service, like a broken truck, code red fire days, or an extra collection.



Claim your \$250

Wendy Greaves,
Winch House Manager

The State Government have extended their \$250 electricity bonus, open to all Victorians who pay for a residential electricity account. Have you claimed yours?

The process is quite straightforward and all done online. Head over to compare.energy.vic.gov.au and click the big grey "Submit a \$250 Power Saving Bonus application", and fill in the information requested. You'll need a recent electricity bill handy so you can provide your details. The Victorian government wants to encourage everyone to make sure they are paying the best rates, so the \$250 bonus is essentially a reward for comparing your current rates with the rates on offer from other providers. You DON'T have to change your current provider.

Winch House is here to help if you'd like assistance in submitting your claim for the \$250 power saving bonus. Appointments are essential, so please call 5267 2028 during open hours (Mon-Fri, 9am-2pm) or email reception@winchhouse.org.au. Don't forget to bring along your electricity bill, and we'll hop onto a computer and fill in your application with you.



Winchelsea Primary School Sensory Garden Opening

Winchelsea Primary School's new sensory garden is sure to become a favourite place for children and adults alike, with spaces for play, learning, interaction and reflection.

The school community led planning for the all-abilities garden, which includes elements designed to provide sensory stimulation, including an indigenous plant circle, labyrinth, vegetation grove, chess arbour and rock stepping stones.

Councillors Adrian Schonfelder and Rose Hodge joined school leaders and pupils for opening of the garden, which included a Welcome to Country and smoking ceremony by Gulidjan woman and school parent Ebony Hickey.

Council supported creation of the garden through a \$50,000 COVID-19 Recovery Grant.

The school provided \$20,000, the Australian Government Local Schools Community Fund \$10,000, and Winchelsea community \$5000.

By popular request from pupils the garden also includes a truck track, and Winchelsea Lions Club provided funds for toy machinery and a storage shed.

It was great to be able to finally open up the space for student use.

I would like to thank Ebony Hickey, a traditional Gulidjin land owner for her amazing 'Welcome to Country' to start off our ceremony – some great messages for our students.

I would also like to thank the Winchelsea Lions Club, Cr Adrian Schonfelder and Cr Rose Hodge and Gretchen Gibson from the grants team at the Surf coast Shire for their attendance and participation in the ceremony.

We would also like to thank all of the generous contributions that made this project happen. Thank you to:

- Surf Coast Shire COVID Recovery grants team and the Surf coast Shire councillors and Mayor



- Winchelsea Star committee
- Winchelsea Lions Club
- School and Community donations and fundraising
- Local Schools Community Fund from our Federal Government




Beeac's GARAGE
TRUSTED • PROFESSIONAL • QUALITY

Services & Repairs
COMBINED 60 YEARS EXPERIENCE

Cars, Utes & Vans
Motorcycles & Atv's
Tractors
Trailers & Horse Floats
Garden & Power Equipment

55 Main Street, Beesac **0417 412 152** www.beeacsgarage.com.au

Earn 10 Telstra Plan points for every \$1 spent with us

Low waiting times, tea/coffee, lounge room, telly stop & post office only a few steps away

Art Studio Opening

I am opening my new art studio for the first time on the 6th and 7th August as part of the Surf Coast Arts Trail.

We are busy getting The Old Quambatook shearing shed up to scratch for the opening. I thought a lot of the old locals will know this shed or have had some involvement with it so may be of interest . Also my Art will be on show .

Feel free to contact me if you would like more information about myself or my practice on 0408521833

SURF COAST

ARTS Trail

10th Anniversary

TAKE 2!

**SAT 6
-SUN 7
AUG
10AM - 4PM**

surfcoastartstrail.com.au
f [surfcoastartstrail](https://www.facebook.com/surfcoastartstrail)







Riverlee Artists ready for stream of Surf Coast Arts Trail visitors

Riverlee Artists has become accustomed to rolling out the welcome mat for visitors since settling into its new home at Winchelsea Shire Hall. So the hinterland group will be at ease greeting patrons as part of the 2022 Surf Coast Arts Trail on 6 and 7 August.

This year marks the Surf Coast Arts Trail 10th anniversary – Take 2, with Riverlee Artists proud to have participated in the event since its inception.

“While we originally exhibited at the Globe Theatre, this year we’re excited to exhibit at the beautifully-refurbished bluestone Winchelsea Shire Hall, which re-opened its doors in February,” artist Denise Murfitt said.

“We’ve been warmly welcomed to the hall by caretaker Jill Evans. It is a wonderful space to gather and embrace our creativity. The local Visitor Information Centre is also based at the hall, so we often have visitors to Winchelsea who come for tourism information, and then enjoy the opportunity to see us working away in our classes.”

Riverlee Artists are a popular stop on the Surf Coast Arts Trail. Six artists – Ms Murfitt, Kate Kerkin, Heather Wainwright, Christine Smith, June Rowe and Lucy Maher – will showcase at the Winchelsea Shire Hall, sharing paintings in watercolour, oil and acrylic on subjects as diverse as still life, landscapes and seascapes.

Meanwhile Riverlee artists exhibiting from their own Winchelsea studios are Veronica McDonald (Vronxart Studio) and Sally Miller (The Shearing Shed). Dee Matheson and Laurel McLennan (Shrek Gallery, Gherang) and Anglesea’s Rosemary Harris-Arnott (Nest Art Studio) and Jill Treloar (Tree House Studio) will also feature on the trail.

“All Riverlee Artists look forward to showcasing their work and meeting the trailgoers at the Surf Coast Arts Trail,”



said Ms Murfitt, who highlighted the group’s sense of community.

“Our experienced artists generously share their skills with our new members, and we have a wonderful group of artists enjoying a friendly and creative atmosphere.

“Exhibiting as a group has allowed Riverlee Artists to facilitate a pop-up exhibition twice a year in Winchelsea. These exhibitions showcase art from the entire group in oil, watercolour and prints created in studio and en plain air. The next Riverlee exhibition at the Globe Theatre will be on Melbourne Cup weekend – 29 and 30 October – which will feature the annual Winchibalds portrait gallery. A sneak preview of portraits will be on display at the hall during the Arts Trail.

“A successful solo exhibition by Veronica McDonald was recently held at the hall, attended by a large number of local and visitors.

“We envisage an ongoing arts focus for the hall – a jewel of the Winchelsea township.”

Shed300 – 300 Barwon Terrace, Winchelsea

Shed300 will be another popular Winchelsea stop on the 2022 Surf Coast Arts Trail, showcasing:

- Jane Bartier, who weaves an understanding of place with reimagined material.
- Louise Hall, whose body of work addresses our colonial story, using the metaphor of garlic sculpted in porcelain.
- Sylvia Maseyk, who sculpts from discarded natural and human-made materials on themes of interdependence and the creative potency of emptiness.

Visual artist Ms Hall was a recipient of Council’s 2022 Arts Seed Development Fund, with her grant to research the gap in the market of arts offerings in Winchelsea, to target both established arts practitioners and those wishing to create art for fun and relaxation. The Hive Hinterland Art School will be a new learning facility for printmaking, plus facilities for people to create paintings and drawings in a range of media.

The 2022 Surf Coast Arts Trail will be held 6 and 7 August, with more than 200 artists across 60 venues. Cr Heather Wellington welcomed the return of the event, which will showcase all mediums – pottery to blacksmithing, painting to jewellery, printmaking to woodworking, and much more.

“It will be wonderful for artists to share their work on the trail once again, and for patrons – both locals and visitors – to see the incredible talent across both the hinterland and the coast,” she said.

To plan your Arts Trail weekend, visit surfcoastartstrail.com.au and download the program which includes a Winchelsea and hinterland feature.

Winchelsea Star

Articles are most welcome and must carry the name and address of the sender.

Weekly deadline is 5pm Friday.

Copy for sports results and weekend events is Sunday 6pm (4pm for hard-copy articles/results left at IGA) unless by prior arrangement.

Copy should be emailed to news@winchelseastar.org.au or left at IGA Supermarket.

The Winchelsea Star reserves the right to edit or not publish any article.

Views expressed are not necessarily those of the Winchelsea Star or its Committee.

500 online subscribers, 250 copies printed for outlets around Winchelsea.

Free subscription to digital version at winchelseastar.org.au

© Winchelsea Star Org. Inc.
All rights reserved.

Winchelsea Star Organisation Inc.
Reg. No. A1479, ABN: 57 207 411 958
winchelseastar.org.au
Po Box 5, Winchelsea, Vic, 3241

Editors:

Cerrie Fogan, Yvonne Stevens
Judy Cameron
editor@winchelseastar.org.au

Advertising:

Sasha Gauntlett and Neil McInnes
advertising@winchelseastar.org.au
0408 102 802

Layout/Sub Editors:

Susan Corby, Charles Corby
Stuart Fountain
production@winchelseastar.org.au

Committee

President: Mick O'Mara
president@winchelseastar.org.au

Treasurer: Cathy Cheadle
treasurer@winchelseastar.org.au

Secretary: Tony Phelps
secretary@winchelseastar.org.au

Committee Members:
Linda Carter

Printer: Mud Group
Website: Winch Websites



WINCH WALKERS.

WE would love to see you for a weekly walk.....anyone new to the area or would like to reconnect with our walking group- everyone is welcome.....



Heart Foundation Walking Group

MEET: MUD HUT- Barwon Terrace – opposite La Hoot

WHEN: every Wednesday at 9:30am – 10:30am (approx.)

WHY: Walking is a terrific way to catch up with people and be active!

COST: It's FREE!

Walking routes are tailored to ensure they are accessible to everyone.

The Walking Group follows the Heart Foundation COVID safe guidelines.

For further information please call Vanessa Berry (Health Promotion Officer) on 0436195616 or email vberry@hesse.vic.gov.au Or call by the Mud Hut with your walking shoes on and come down to meet us..... we would love to see you!!

Water Delivery

WAZZA'S
WATER CARTAGE

Stainless Tanker Up to 22,000 ltr loads
Barwon Water Registered

Domestic & Rural Water Supplies

Call Wazza
Mob: 0428 877 260
Email: wazza@wazzas.com.au Web: wazzaswater.com

Kyeema
Rural Fencing Pty. Ltd.

Jason Armstrong & Jay Hawker

1080 Prices Lane, Ombersley, Victoria, 3241
0419 565085 (Jason)
0416 585817 (Jay)
kyeemafarm@kyeemafarm.com.au

Also incorporating domestic and rural tree trimming services.

Knuckey's Winchelsea Ph: 5267 2011

Knuckey's have in stock a complete range of batteries to suit tractor, heavy machinery, cars, utes

The largest range of the best oil for your vehicles—**CASTROL**—
'when only the best will do'

The largest range of V belts.
A, B, C, D M Sections
Bolts and nuts for all occasions
Steel cut to size

Mowers & Chainsaws

Repairs to all makes and models of ride on mowers, domestic mowers, pumps, chainsaws, brushcutters and small engines.

Trading Hours: Mon - Fri 8am - 5pm Saturday 8am - 12 noon

5267 2266 Cnr Princes Hwy & Lennox St Winchelsea

www.allaboutmowers.com.au



accounts@allaboutmowers.com.au

Helen Mark Kininmonth Kindergarten

Last week the 4yo kindergarten group at Helen Mark Kininmonth Kindergarten enjoyed a visit from The Melbourne Museum Dinosaur and Fossil Travelling Van.

Bronte took the children back in time to reflect on the existence of these ancient animals. She taught them about some of the different types of dinosaurs, read them a story about the extinction of the dinosaurs and allowed them the opportunity to explore and examine fossils, dinosaur bones, replicas and photograph.

The children learnt about the ways in which palaeontologists have come to understand dinosaurs through finding and studying fossils.

The children had the opportunity to talk about and touch real dinosaur fossils from the Museum Victoria collection, learn about ancient time periods, see life-size replicas of dinosaur skull, foot and legs and to classify their favourite prehistoric creatures as herbivores or carnivores.

Following on from this, the children have been enjoying our Palaeontology Lab and digging for dinosaur bones and fossils themselves.




Australian Fire Danger Rating System



Introducing the new Australian Fire Danger Rating System

BE READY TO ACT
UPDATED 25/09/2022

Fire danger ratings describe the potential level of danger should a bushfire start. They are important because they provide people with information so that they can take action to protect themselves and others from the potentially dangerous impacts of bushfires.

From September 1, Australians will have a simplified, action-oriented Fire Danger Rating System.

The new Australian Fire Danger Ratings (AFDRS) levels are:

 <p style="font-weight: bold; margin: 5px 0;">MODERATE</p> <p style="font-size: small; margin: 0;">Plan and prepare</p>	<p style="font-weight: bold; margin: 5px 0;">HIGH</p> <p style="font-size: small; margin: 0;">Be ready to act</p>
<p style="font-weight: bold; margin: 5px 0;">EXTREME</p> <p style="font-size: small; margin: 0;">Take action now to protect life and property</p>	<p style="font-weight: bold; margin: 5px 0;">CATASTROPHIC</p> <p style="font-size: small; margin: 0;">For your survival, leave bushfire risk areas</p>

- The AFDRS will also introduce 'off' for those days where no proactive action is required by the community. On these days, you will still need to abide by local seasonal laws and regulations, but there is little or no risk of a fire that starts spreading in a dangerous or life-threatening way.
- The AFDRS is informed by one of Australia's largest social research projects which found that most Australians do not understand the current system, and would prefer a simpler, action-oriented set of fire danger ratings.
- The AFDRS is being implemented consistently across Australia and will mean that wherever you are across the country, you will be able to understand the threat posed on any given day and make appropriate decisions to keep you and your family safe.

✉ afdrs@afac.com.au

📍 www.afac.com.au/initiatives/AFDRS

Free Community Service Advertisements

Services and Activities in Winchelsea



TRAIN SERVICES

To Geelong

Mon - Fri

6:41 am, 7:59am, 11:34am,
2:01pm, 7:37pm

Sat and Sun

9:35am, 1:36pm, 7:18pm

To Warrnambool:

Mon - Fri

9:29am, 2:56pm, (to Colac
5:27pm), 6:45pm, 8:53pm

Sat and Sun

8:47am, 2:49pm, 8:37pm

Country Women's Association



7pm Second Wednesday of Month
Winchelsea Senior Citizens' Hall

Bus to the Hub

For reservations on the weekly bus
to the Eastern Reserve Hub,
please phone 52671202.

Surf Coast Mobile Library

Surf Coast Mobile Library
parked in Hesse Street
(outside Shire Hall) on Fridays
between 2:00 and 5:00pm
unless it is a Public Holiday.
Hesse St, Fridays, 2pm-5pm

Winchelsea Taxi

0429 672 888 or 5267 2888

Wheelchair accessible
10 seater bus available.

Winchelsea SES

Meeting and training
2nd Wednesday

Training 4th Wednesday

Visitors and inquiries welcome

0408 102 802



Winchelsea and District Combined Probus Club

Meets 1st Monday of the month at 10am.
Senior Citizens Rooms, Harding St,
Winchelsea. New members always
welcome.

Enquiries Linda 0439 817 263.

Body Therapy Classes

Yoga, Pilates, Qi Gung and Mindfulness Meditation Practices

Tuesdays 6.15pm \$13 Cash
Catholic Church Hall -School Term Only

Dr Haidee Benning, 0428 177 964

Winchelsea Playgroup

Every second Thursday 10am-12pm
St Thomas Anglican Church Hall
cnr Barwon Tce and Hopkins St, Winchelsea
Contact: Melissa 0456181268
Facebook - Winchelsea Playgroup 2019

New families welcome

Winchelsea Girl Guides

Our Unit meets at the Catholic Church
Hall, Harding St Winchelsea
each Monday 4.30pm-6pm
All girls 5yrs- 15yrs Welcome!
Contact Yvonne Orchard 0448 672 630
or Bonnie Stokes 0401 386 274

1st Modewarre and Winchelsea Scout Group

Joey's: Tuesdays of school term 5-6pm
Cubs: Mondays of school term 6:30-8pm
Scouts: Tuesdays of school term
6:30-8:30pm

All at Modewarre Hall, Cape Otway Rd
Venturers: Wed at Walton's Rd Venturer Den
Contact Marie McPadden 0409 330147

Winchelsea Transfer Station

Opening Hours

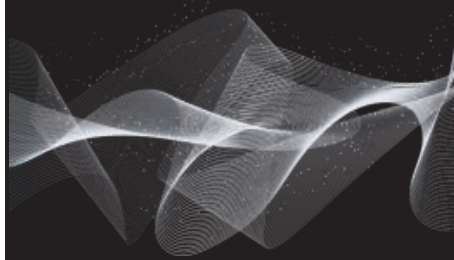
Monday	Closed
Tuesday	2pm-4pm
Wednesday	Closed
Thursday	2pm - 4pm
Friday	Closed
Saturday	1.30pm - 3.30pm
Sunday	9.30am - 12.30pm

55 Cressy Road, Winchelsea.
Accepts household garbage,
mixed commercial and industrial waste,
mixed construction and demolition waste.
Accepts recyclable materials.
Accepts one recycle bin two waste bins.
Does NOT accept clean fill.

SOLIS

ENERGETIC ALIGNMENT THERAPY

Enhance the function and vitality of your body, mind, and spirit. Release tension and stagnant energy through this subtle, yet powerful therapy. Supports the healing of physical ailments, trauma, mood, discomfort & more.



**APPOINTMENTS ESSENTIAL
CALL 0468457062**

A Quilt to Remember

In the 19th century, Irish immigrants to America took their custom of quilt making with them, bringing quilts to wrap up and carry their belongings, to use for warmth during comfort on their journey and to remind them of home.

This tradition continued recently with the completion of a quilt by a group of dedicated craft workers who meet every Wednesday in Winchelsea. The quilt started by Sarah (Sally) Atkinson prior to her death from Pancreatic Cancer in March 2020.



Sarah had been an active community volunteer and member of the group so it was only natural that her family donate her craft materials gathered through her involvement over many years. To the group's surprise an unfinished quilt surfaced. As a token of respect it was agreed to complete the quilt and give to Sarah's daughter on her 40th birthday.

"I was humbled and so happy to receive



Dot Finch, Ray Atkinson, Kathleen Cleyne, Julie Loone

the quilt," said Ray Atkinson, Sarah's husband of 41 years.

"I lost Sal, my soulmate, to cancer too soon but it is heartening to know everyone valued her friendship and wanted to provide this legacy for my daughter. It will be with a great deal of pride tinged with sadness when I give it to her in WA in September. I sincerely thank Kathleen, Julie, Dot and other members who each contributed to the quilt's completion. Their kindness & generosity is greatly appreciated," continues Ray.

So this quilt will have its own history. One of unity & remembrance - tying families and communities together.

Pancreatic Cancer is seldom detected in its early stages and typically spreads rapidly, making it the 4th leading cause of cancer death in Western societies. Garvan Institute of Medical Research pancreatic cancer research is diverse why not consider making a donation at garvan.org.au.

"This has been a very personal and emotional time for me and I thank the Winchelsea community for their ongoing support," concludes Ray Atkinson.



Winchelsea Men's Shed



For The Community

51 Hesse Street

Every Wednesday from 9:30am

New members always welcome

**For more detail contact:
Ray Atkinson (Co-ordinator)
0407 839 139**

**or
winchmenshed@gmail.com**

**Need a job done?
Woodworking jobs,
furniture repairs, small jobs.
Drop in and talk to us.**

Women's Workshop

Any ladies out there who are interested in learning some workshop and home maintenance skills?

The Winch Mens' Shed are running free workshops starting in August. Let us know what you would like to learn and what days and times are most suitable. We can tailor the workshop to cover what is most requested and on days that suit most.

If you are interested in attending please contact the Men's Shed on 0407839139 (Ray) or email winchmenshed@gmail.com

Winchelsea Football Netball Club Inc

News



Janet Fletcher

WELCOME TO BLUES NEWS ROUND 16:

Last Saturday there was a big crowd to watch the local Football at Eastern Reserve where the Winchelsea Blues hosted the Bannockburn Football & Netball Club.

RESERVES:

Winchelsea Blues 5.8.38 were defeated by Bannockburn Tigers 7.7.49.

The Reserves have so many great first halves throughout the season only to not be able to finish the way they start to pick up the 4 points. Saturday was another game following a similar pattern.

The Blues started off really well, they led at quarter, half and three quarter time only to surrender their hard fought lead in the last 20 minutes. Plenty to build on for season 2023 with 2 more home and away games to go in 2022.

GOALS: Beau Duthie 3, Daniel Greskie 1, Sam Jess 1.

BEST: Josh Freeman, Sam Grant, Dougal Barrett, Sam Jess, Callum Shaw, Damien Tabakovic.

SENIORS:

Winchelsea Blues 5.12.42 were defeated by Bannockburn Tigers 18.8.116.

The Blues started well in the first quarter kicking 1 goal 2 points to Bannockburns 2 goals, but after that it was all Bannockburn's way on the scoreboard.

To the Blues credit their undermanned side kept attacking the ball and the game right to the final siren, the best 6 could easily have another 6 added to that list.

Great to see some of our walking wounded up and about helping out in the Canteen complete with a serious knee brace, and many thanks to the beautiful Mary King who stepped up in Donna McCallum's absence to head up the

Blue's Canteen, and as always was absolutely marvellous. Thanks heaps Mez !!

GOALS: Brayden O'Hanlon 2, Matthew Dykes 1, Tom Stephenson 1, Caleb Brown 1.

BEST: Beau Fincham, Ollie Mahncke, Tom Rouget, Caleb Brown, Tom Stephenson, Lachie Gemmill.

SEASON 2022 LAST HOME GAME

This week sees the Blues hosting North Geelong at Eastern Reserve for the last home game for the 2022 season.

There will be free entry at the gate and a range of food options to choose from. This will also feature our MAJOR RAFFLE coinciding with the club's Sponsor's Day, with fabulous prizes donated by the following Sponsors. This a limited ticket raffle with only 200 tickets.

TICKETS ARE \$25.00 EACH.

Tickets will be available through the Club's social media pages and also at this weeks Thursday night tea.

1ST PRIZE - \$1,000

2ND PRIZE - \$750 All About Mowers Voucher

3RD PRIZE - \$500 Bob Jane Voucher plus a Perrelli Pack

4TH PRIZE - \$250 R.A.C.V. Voucher

5TH PRIZE - \$100 Maguires Butcher's Voucher

6TH PRIZE - 2022 signed Geelong Cats jumper, complete with a certificate of authenticity .

The W.F.N.C. is grateful for this great support in the way of these great prizes.

PLEASE SUPPORT THOSE WHO ARE SUPPORTING US !!

WINCHELSEA AUSKICK

The Winchelsea AUSKICK participants will be presented with their Auskick

medallians after their game held during the Seniors halftime break. Congratulations to all those who have taken part in this season of Auskick.

THE BLUE'S BISTRO:

This week will see the menu feature a Roast Beef/Pork

Flathead Tails
Chicken Cabonara

Members \$12, Non-members \$15,
Chicken Nuggets & Chips & Gravy \$5

Dessert \$4

Complimentary tea & coffee, the heaters are always turned on nice and early!

VALE DIANNE KIRBY

The Winchelsea Football Club wishes to send our sincere condolences to the family and friends of Di Kirby who sadly passed away recently after being very brave whilst struggling with health issues. Di will be missed by many from the Blues Bistro, and from around the township of Winchelsea. May she Rest in Peace.

NETBALL NEWS

This week we took a clean sweep of the senior games against the historically strong Bannockburn club. Unfortunately, in the junior section the tables were turned but our improvement since first round was enormous and tells the story of the efforts of players and coaches to improve our skills.

A Grade

**Winchelsea 11 9 10 10 40 Def
Bannockburn 14 7 7 7 35**

Much to our distress the A Grade competition is pretty even especially across the top 5 so 1st versus 5th was not an easy win for us. Bannockburn came out very strong and took the first quarter

by 3 goals and had us scrambling. We came back in the 2nd, crept ahead in the third and finished steady in the last. Gemma Stevener had her work cut out for her this week against the strong and tall Bannockburn goal shooter but once she got off body she kept creating turnovers when we needed them most. Casey Carrol was strong and dynamic through the mid-court and was superb when patient with her delivery. Mel Philpott was a strong target in attack and scored and rebounded well.

Best Players: Gemma Stevener, Casey Carroll and Melody Philpott
Goals: Melody Philpott 26, Ebony Berg 14

B Grade

Winchelsea 11 13 7 9 40 Def
Bannockburn 4 9 5 9 27

After being the only senior team to go down to Thomson last week the girls were looking to redeem themselves this week. They made sure they got a strong start taking a 11 goal lead into the half time break. Katrina Filice was up and about this week in attack, mixing it up between strong holds and attacking drives, then finishing with accuracy. Down the other end Rhiannon Nelson was back to her best in goal keeper shutting down the scoring opportunities of Bannockburn with her aerial intercepts and off body defence. Sarah Hampshire was strong and steady through the mid-court all game. Keep up the good work girls and finish of the season well.

Best: Rhiannon Williams, Katrina Filice & Sarah Hampshire
Goals: Katrina Filice 21, Steph Hicks 13, Hayley Castle 6

C Grade

Winchelsea 6 9 8 11 34 Def
Bannockburn 8 7 7 8 30

This 4th versus 5th match up was really one to watch. The game ebbed and flowed with only a few goals between the sides for most of the game. Birthday girl Belinda Czerniawski put out a stellar performance and was pivotal to the team taking home the points with her 31 goals once again scored with extreme accuracy. Daughter Sarah Todd was pivotal opening up Belinda under the post with her great ball delivery and strong sweeping drives, whether in wing attack or goal attack. Claire Mawson was also strong gain

through the mid-court with her confidence to deliver growing every week. Keep up the good work girls, a win next week against nemesis North Geelong could snag the girls a double chance come finals.

Best Players: Belinda Czerniawski, Sarah Todd & Claire Mawson
Goals: Belinda Czerniawski 31, Julie Ciurich 2, Sarah Todd 1

D Grade

Winchelsea 9 5 6 5 25 Def
Bannockburn 2 8 2 8 20

To Quote Cara Mathison D Grade are a win 4 of a 6 goal winning streak required to pull off a late season comeback like no other! The girls went out with a slightly tweaked line up with Mikayla Nelson taking the centre bib. The line up worked and we took the first quarter by 7 goals. A regroup by Bannockburn and a nasty unsettling fall to Tayah Kahle (who thankfully is ok) saw Bannockburn peg us back in the second. Emily Caldicott jumped on for her first game with the group and settled in in the third to allow us to extend our lead again. Bannockburn came back but we hung on for a good win. Cara Mathison was the stand out this week with amazing number of intercepts and rebounds. Whilst down the other end Brittany Fox is really coming into her own with sweeping drives opening up Chelsea Howell under the post.

Best: Cara Mathison, Brittany Fox and Makayla Nelson
Goals: Chelsea Howell 21, Brittany Fox 4

19 & Under

Bannockburn 19 18 18 15 70 Def
Winchelsea 1 3 1 6 11

It was a pretty tough week this week for our struggling 19 & under side. Bannockburn came out meaning business with their spot in the finals on the line. Bannockburn scored strongly off their centre passes and shut down our opportunities, particular in the 1st & 3rd quarters where we only took one shot per quarter. In the last we had a shake up and kept Bannockburn to 15 goals and managed to put up 15 shots and score 6. Claire Gaffney worked hard all game through centre, taking the drives through the court well whilst Sammi Kuchenmeister and Courtney Spoons played a good driving attack role,

sweeping into the circle and trying to work a good position.

Best: Claire Gaffney, Sammi Kuchenmeister and Courtney Spoons
Goals: Grace Leeson 3, Samantha Kuchenmeister 2, Courtney Spoons 1, Chloe Partridge 5

17 & Under

Bannockburn 8 11 10 12 41 Def
Winchelsea 1 1 5 1 8

Bannockburn 17 & under side are also on top of the ladder with no losses for the season and only 1 draw. The girls new this would be a very tough ask but worked hard for the first half with not very much reward. In the second half with the game lost the girls tried to have a little fun and move around a few positions and to their credit is actually proved to be not only a positive for team morale but also a positive on the score board with this being their best quarter. It was fantastic to see the enjoyment of new goalers scoring and new defenders getting intercepts. Sammi Kuchenmeister was strong in both goal attack and wing defence, whilst Tayah Kahle made the transition from goal defence to goal attack seamless. Claire Merendaz also enjoyed the move around the court even having a crack at circle defence.

Best: Sammi Kuchenmeister, Tayah Kahle and Claire Merendaz

Goals: Chloe Partridge 1, Samantha Kuchenmeister 1, Jess Loney 3, Tayah Kahle 3

15 & Under

Bannockburn 8 7 7 11 33 Def
Winchelsea 6 9 2 4 21

Whilst we took a loss this week our performance against 2nd placed Bannockburn was much improved since Round 4 which saw us down by 24 goals. The girls came out strong from the start with accurate shooting and good ball movement. Unfortunately Bannockburn were still confidently scoring off their centre passes and intercepts were hard to come by. In the second quarter we started to get a few more turnovers and we won this quarter by 2 goals. Unfortunately Bannockburn made some changes which proved effective and they ran away with the second half. Millie Partridge held strong all day and shot with accuracy in

most part, Bella Leak's drives and strong feeds enabled delivery into the circle well. Kiesha Davis had her first full game in goal defence and played excellent against a strong Bannockburn GA.

Best: Millie Partridge, Bella Leak & Kiesha Davis

Goals: Millie Partridge 14, Ashlee Bell 7

13 & Under

Bannockburn 9 9 6 9 33 Def
Winchelsea 2 0 3 0 5

With Bannockburn on top of the ladder undefeated with a whopping 600% + it was going to a big challenge for our developing 13 & under side. To their credit the girls set themselves some challenges and took every opportunity to slow down

Bannockburn's scoring opportunities and get some scores on the board for us. Compared to last time we trimmed 6 goals from Bannockburn and added two for us, a great achievement by the girls. Lexi Czerniawski was excellent again this week, particularly when she went into to centre in the 3rd quarter being a pivotal part of our 6-3 third quarter. Jayde Walker and Kiera Pearce saw a lot of the ball in defence and a few got through but they made Bannockburn work for every score, picked up numerous deflections, a few intercepts and quite a few rebounds.

Best: Lexi Czerniawski, Jayde Walker & Kiera Pearce

Goals: Reani Mawson 3, Lexi Czerniawski 1, Holly Leak 1

Winchelsea Churches

Winchelsea Uniting Church

Hesse St, Winchelsea 3241
uca.winchelsea@gmail.com
0475 777 301

Services 9.30am Sundays

St John the Baptist Catholic Church

Harding St, Winchelsea 3241
Father Joseph Panackal
0404598558

St Thomas' Anglican Church

Barwon Tce,
Winchelsea 3241
Rev'd A. Lynne Clarke
stthomaswac@gmail.com
0477 672 042

Australian Fire Danger Rating System

CHANGING THE SCIENCE:

- The current Fire Danger Rating System is largely based on science that is more than 60 years old. New technology and research have greatly improved our ability to accurately predict fire behaviour and the potential threat to the community.
- The AFDRS uses the latest scientific understanding about weather, fuel and how fire behaves in different types of vegetation to improve the reliability of fire danger forecasts. This strengthens the ability of those working in emergency services to be better prepared, make improved decisions, and provide better advice to the community.
- The new fire danger rating system is designed to be continuously updatable so that the system can take advantage of improving science, data and information into the future.
- By better understanding fuel types and fire behaviour on any given day of fire risk, agencies will be in a stronger position to respond to fires, adopting specific firefighting suppression strategies.



BENEFITS:

The Australian Fire Danger Rating System (AFDRS) Program is redesigning the forecasting of fire by:

- Improving the scientific accuracy behind fire danger predictions.
- Improving the way that fire danger is communicated.
- Providing government and industry with better decision-making tools.
- Reducing the costs associated with bushfire impacts.

The key benefit is a more prepared and resilient community resulting in a reduction in loss of life, property, and human harm.

The AFDRS calculates fire danger at a finer geographic scale than ever before so more relevant and specific information can be provided.

Significant cost savings are expected due to improved fire danger information leading to better decisions and more appropriate and timely action. It will also improve cross-border operations and support sharing of firefighting resources.

This is a national program funded by the Commonwealth and all the States and Territories and delivered by local implementation teams. The AFDRS is being coordinated by NSW RFS and AFAC (the National Council for Fire and Emergency Services), with support from the Bureau of Meteorology. A National Program Board, with representation from each of the State and Territories' fire agencies, is overseeing the program.

Thought for the Week

The richest man in the world once said

“A simple life in the fear-of-God

is better than a rich life

with a ton of headaches.”

John Bader (Lay Preacher)

Uniting Church.

News from Growing Winchelsea - Arboretum Trail



It is with great pleasure that we announce that Growing Winchelsea's recent application for funding from the Queen's Jubilee Program has been successful.

For those of you who are unaware, this grant amount forms part of the \$100k that was made available to each Federal Electorate under the program. There is more information about the program at the following address, <https://business.gov.au/grants-and-programs/planting-trees-for-the-queens-jubilee>

Many people contributed to the success of this application. During the application process and since, we have forged

strong new connections and strengthened existing relationships and we are very grateful for the time, patience and expertise willingly given by so many.

Surf Coast Shire officers have made and will continue to make, a substantial contribution and we thank them.

Specifically, our grant will be applied to the planting of 60 *Corymbia Citriodora*, Lemon Scented Gums, along Mercer and Barkly Sts., Winchelsea, contiguous with those existing in Barkly St. Tree planting will occur in Spring 2022.

We will continue our community engagement as the project progresses. The project includes many milestones culminating in an Opening of the Queen

Elizabeth II Platinum Jubilee Avenue on the afternoon of the 2nd of December, World Pollution Prevention Day, to be held in Mercer St.

On behalf of the members of the Arboretum Trail Group, a sub-committee of Growing Winchelsea Inc., our heartfelt gratitude to everyone who has got behind this community initiative, including those assisting in the application process, community engagement and SCS officers for the project development and delivery. We anticipate this project to be the start of many such tree planting projects which will be made possible from other funding sources, and look forward to assisting in greening, beautifying, and connecting Winchelsea, which, combined with the many other benefits that are associated with tree planting, will ensure Winchelsea will be a great place in which to live, work, visit and invest.

Trial of dog waste bag dispensers at Reserves

Surf Coast Shire Council is piloting the installation of dispensers and free dog waste bags at a range of popular public reserves to make it easier for owners to clean up after their pets.

Dispensers are being installed as part of a 12-month trial at the following locations:

- Eastern Reserve, Winchelsea
- Barwon River Reserve, Winchelsea
- Winchelsea Common
- Newling Reserve, Moriac
- Mount Moriac Recreation Reserve
- Banyul Warri Fields AFL ovals, soccer and hockey pitches, Torquay
- Quay Reserve, Torquay
- Spring Creek Reserve, Torquay
- Bob Pettitt Reserve, Jan Juc
- Bellbrae Reserve
- Ellimatta Reserve, Anglesea
- Stribling Reserve, Lorne

Cr Adrian Schonfelder said dog owners are required to carry waste pick-up bags under local law but the dispensers would provide extra options. "We love seeing sporting clubs and individuals including dog owners making such good use of our sporting ovals and recreation reserves across the shire," Cr Schonfelder said.

"Cleaning up after dogs and disposing of waste properly in bins is part of being a responsible pet owner using these reserves. By providing dog waste bag dispensers and bags at these locations we hope to ensure that all users can have pleasant and safe experiences sharing facilities."

The new dispensers are the first provided by Council. Existing dispensers along coastal reserves are supplied and managed by Great Ocean Road Coast and Parks Authority.

Under Council's local law, dog owners can face fines for failing to carry pick-up bags, or failing to pick up after their dogs.

People seeking more information can call Council on 52610600 or lodge a request via www.surfcoast.vic.gov.au/ request

Register as a Responsible Café

A new partnership is brewing to create a more sustainable Surf Coast and support local cafes to reduce their waste.

Council now invites local cafes to join the program, with the first 30 cafes that register as a Responsible Café to receive a starter pack of reusable Huskee cups worth over \$300.

Each business that registers with the program will also be promoted on a nationwide Responsible Cafes map, receive support and advice on getting set-up and social media templates and posters to communicate the initiative to customers.

Surf Coast Shire has more than 70 cafes, which means we could be generating more than 1.9 million disposable cups each year," Cr Stapleton said.

"We encourage all cafes to register for this great initiative, and for our community members to dust off their reusable cups to support our beautiful natural environment."

DownRyte Excavations

- Excavations
- Drilling and Piling
- Rock Placement
- Tree and Stump Removal



Sean Hunwick
 Mobile: 0409 447 288
 Email: downryte@activ8.net.au

52672192 **R & K Creative Framing**
 for all your framing needs

free quotes
 pension discount
 specialist in Age &
 Disability Modifications

Ray & Kim Jansen
 10 Witcombe st
 Winchelsea 3241

Ray The Home
 Maintenance **HANDYMAN**
 abn 47928623462

0414672192

LIONS CLUB OF WINCHELSEA

PAPER RECYCLING

Paper depot rear of
 Senior Citizens Rooms Harding Street
**NEWSPAPERS, MAGAZINES,
 PHONE BOOKS WANTED**

SHEEP POO FOR SALE

\$5 per bag.
 Available at paper depot rear of
 Senior Citizens Rooms
 Harding Street
 most mornings between 10 and 12
 or contact David on 0410 029 857.



**RAISING FUNDS FOR OUR
 TOWN & DISTRICT**
 5267 2011 or 0408 520 606

DANCE
classes

**MID-YEAR
 ENROLMENTS
 NOW OPEN!**




For more information or to enrol, please visit
www.melsdancecentral.com.au

CLASSES AVAILABLE IN WINCHELSEA

PRE-SCHOOLERS - ADULTS

BEGINNER - ADVANCED LEVELS

mainly music
 est. 1990

Fun, Interactive music sessions for
 pre-school children (0-4 y.o.) and
 parents/caregivers

*When: Mondays from 10 to 11 am
 (runs during school terms)*

*Where: St Thomas' Hall
 25 Barwon Tce.*

To Enquire ring: **0407838256**

**Plasterer
 & Painter**

Daryl Hecker

Domestic & Commercial
 Renovations & Repairs
 Suspended Ceilings
 Dustless Sanding
 New Homes
 Extensions



Ph 0419 194 799

**WINCHELSEA
 CONCRETING**

• Driveways • Sheds • Decorative Concrete • Raft Slabs

Robert Murphy
 ☎ 0438 235 237
 ✉ winchelseaconcreting@outlook.com

Surf Coast Arts Trail newcomer is a bright SPARK

The 2022 Surf Coast Arts Trail will support the goal of Deans Marsh organisation SPARK to light the way for local connections.

The Arts Trail – held 6 and 7 August – is pleased to welcome debutant SPARK, which will showcase its collaborative facilities at Deans Marsh Memorial Park where trailgoers can take in various artists at the one venue.

“When we first developed SPARK, we envisioned facilitating spaces that invited people from our community and further afield to connect with the artists in our community,” SPARK administration coordinator Miranda Jarvis said.

“Many artists living regionally find themselves isolated from the broader arts community, so we want to provide spaces for people to practice art, learn from each other and develop new skills.”

Numerous artists featuring on this year’s trail are long-time participants. “This includes Veronica Phillips who – along

with Sandra Hickford – has done amazing work promoting the arts in our area and gathering artists for previous Arts Trail events in Deans Marsh,” Ms Jarvis said.

Musician Josh Rigg will perform at the Memorial Park’s festival stand at 11.30am on Saturday 6 August, while the historic Footy Shed will see local artists share their practice, creative processes, and works for sale. Deans Marsh Hall will be home to textile artists and designers running displays, demonstrations, and events.

“In the Footy Shed gallery, we will host Deb McSephney, Lea Barker, Brendan Barker, Sara Perry, Veronica Phillips, and myself. We have a diverse range of practices across photography, oil painting, painting, printmaking, collagraph, and sculpture,” Ms Jarvis said.

“In the hall, we will host a display of textile works and demonstrations from local textile artists Lynette Clucas, Belinda McKenzie, Heather Locock, Jennifer McDonald, Seona Gunn, Sue



Cole and Gillian Farrow, who is also opening her studio for the Arts Trail.

“Designer Lynette will be working on SPARK’s industrial sewing machine over the weekend and display her wares including recycled deck chairs and cushions, and a beautiful series of velvet capes made for the Deans Marsh Winter Solstice gathering.”

On Sunday 7 August from 1pm to 4pm, SPARK will run its monthly Craft Gathering. “We invite everyone to come along, and welcome you to bring a project you’re working on or would like to start and get to know the wonderful community of makers in the Marsh,” Ms Jarvis said.

To plan your Arts Trail weekend, visit surfcoastartstrail.com.au and download the booklet, and follow @SurfCoastArtMatters on Facebook and Instagram.

Seeking feedback on Draft Nature Strip Policy

The Surf Coast Shire Council has created a new policy and guidelines to guide use and maintenance of residential nature strips and will seek public feedback for a month from 22 August.

Nature strips are public land, owned and controlled by the Council and part of the road reserve.

The policy is based on five principles. That nature strips:

- Provide a public space which contributes to sense of place and community.
- Should be safe and accessible spaces.
- Contribute to healthy environment for people, plants and animals.

- Can play an active role in supporting Council’s Climate Change response.
- Play a role for location of essential services.

The guidelines recognise that nature strip terrain can vary greatly in some Surf Coast communities, influencing use.

Under the policy it is proposed that:

- Hard surfaces such as gravel or mulch are no longer permitted as they lead to more stormwater run-off and lead to materials being washed into downstream water bodies like wetlands, rivers and the ocean.
- Well-kept grass and modest plantings are preferred due to their environmental benefits, their ability to reduce radiated heat and to soften streetscapes.

- Residents wishing to undertake works varying from the nature strip guidelines will need to seek a permit so Council officers can individually assess the proposed works against the guidelines and broader Council objectives.
- Property owners or occupiers are required to maintain nature strip grass and any plants excluding street trees, which are solely Council’s responsibility.

Community members can view the Draft Nature Strip Policy and Guidelines at www.surfcoast.vic.gov.au/naturestrip and will be able to provide feedback between 22 August and 22 September.

People seeking more information can call the Council on 52610600 or lodge a request via www.surfcoast.vic.gov.au/request

Simco Plumbing and Gasfitting

24/7 Emergency service Ph:0400643976

- All General Plumbing and Gasfitting
- Roof and Gutters, Hot Water service changeover
- Split Systems, Air Conditioning and Wood Heaters
- Irrigation, Septic and Treatment plants
- Excavation, Bobcat and Tipper
- Rain water Tank installation
- Renovations and Extensions
- Gas conversions and servicing

Simon McGillivray
Lic:109610. Free quotes, Fast and friendly service



St Vincent de Paul Society
good works

Covering Meredith, Bannockburn, Anakie, Lethbridge, Inverleigh, Teesdale, Shelford, Elaine and Winchelsea

52219170

Monday - Friday 9am to 2 pm
<http://www.vinnies.org.au>

A caring Catholic organisation offering "a hand up" to all people in need.



Matthew Partridge
p 0418 672 334
e mrpsteelworx@yahoo.com.au

Welding Service

- Onsite welding
- Farm maintenance
- Farm machinery & equipment repairs
- Cattle & sheep yards
- Custom built trailers
- Supply & install gates

BUILDING? RENOVATING? NEW HOME? EXTENSION?

- ◆ **BUSHFIRE ASSESSMENTS**
- ◆ **6-STAR ENERGY RATINGS**

BRUCE ST. CLAIR
0435 892 799



OZ TREES NURSERY & TREE PLANTING SERVICES

- Affordable seedlings—over 200 species
- Complete plantation service—farm forestry, shelter, aesthetics
- Deep ripping & mound ploughing. Rotary bed forming
- Our experienced staff will help you select species for your site conditions and needs

Also available—tree planting tools, milk cartons, plastic tree guards & bamboo stakes

569 Warrowie Rd. Colac
P: 5233 6280 F: 5233 6393
E: info@oztrees.com.au
W: www.oztrees.com.au
Open Monday—Friday
9am—4:30pm



Phone OzTrees for professional advice,

WINCHELSEA GAS CONNECTIONS

Are you connected to natural gas? We organize service pipes & meter connections.
Any appliance you wish connected:

- Gas log fires
- Gas heaters
- Hot water services
- Hot plates
- Ovens
- BBQs

RM & ME Plumbing Pty Ltd
Ross 0417 561 558
Murray 0434 600 139

Antique Repairs

By **Doug Burns** est. 1976

- All Furniture
- French polishing
- Carving
- Veneering
- Wood Turning
- Porcelain



Unusual Requests Welcome

180 Barwon Terrace, Winchelsea

0428 672 704

B & H Modifications

Bob Verity

55 Stephenson Road
Winchelsea 3241
Ph: 5267 2467
Mobile: 0411 610 678



Industrial Sewing Machine Work

Caravan Annexes, Trailer Covers, Shade Sails, Alterations and Repairs to Camping and Tents. Clear PVC Blinds Repairs to CLEAN Horse Rugs No Job Too Small
Email: bobverity@southernphone.com.au

Shed 300 Open for the Arts Trail

Three local artists have brought their talents together under one big iron roof called Shed 300, on Wathaurong Country at 300 Barwon Terrace, Winchelsea. On the weekend of 6-7 August 2022, as part of the Surf Coast Arts Trail, Shed 300 will showcase the work of weaver Jane Bartier, and sculptors Louise Hall and Sylvia Maseyk.

Over 60 artist studios and galleries will open across the Surf Coast Shire, including eight located in Winchelsea and the hinterland.

Shed 300 is a well-seasoned working



shed complete with farm materials and equipment, which will double as a gallery space to house the local contemporary works during the Arts Trail weekend.

Jane Bartier's weavings are grounded in her practice of walking on the land. The very long (4 metres+) pieces bring together traditional weaving fibres as well as baling twine and other found materials and will be displayed draped from Shed 300's roof beams.

Louise Hall is a painter, printmaker and sculptor, whose current body of work addresses our colonial story using the

metaphor of sculpted garlic. The soft shadows of the shed highlight the fragile beauty of the porcelain pieces.

Sylvia Maseyk is fascinated by the drawings created in nature, particularly tree branches against the sky. Sculpting with small river gum branches, Sylvia expands this idea of "natural drawing" into a three dimensional sculpture.

The artists will be available to talk about their work and will display journals and sketches so that visitors may experience how the work has developed.

Other local artists who will open their studios for the Arts Trail include Sally Miller, Veronica McDonald, Riverlee Artists, Ron Talbot, Dee Matheson, Laurel McLennan, Shed 290 (Gillian Farrow and Ian Westwood) and Spark! artists at Deans Marsh.

Surf Coast Arts Trail, 10am – 4pm, 6th and 7th August 2022.

All artists and studio location maps can be found at <https://surfcoastartstrail.com.au/>

Faulty Towers @ Winchelsea Hotel

Straight from London's West End via the legendary Sydney Opera House, this international sensation is coming to the Winchelsea Hotel in August 2022. Officially the world's most sought after tribute to the BBC sitcom, Faulty Towers The Dining Experience is simply unmissable – and 'outrageously funny' (BroadwayBaby)!

Become part of the action as Basil, Sybil and Manuel serve up mayhem on a plate alongside a 3-course meal and two hours of non-stop laughter. Expect nothing short of guaranteed fun and a

brilliant night out as you climb inside the BBC's iconic TV show and experience it from the inside out... With over 70% improvised, this is the completely immersive and highly interactive comedy spectacular where anything can happen... and usually does!

Australia born in 1997, Faulty Towers The Dining Experience has been receiving critical and audience acclaim ever since.

It's appeared in 41 countries over the years, and tours constantly in Australia, Europe, Scandinavia and Asia. It also returns for extended seasons every year to Adelaide Fringe, Melbourne International Comedy Festival, and

Edinburgh Fringe, and has an ongoing residency in London's West End. And having recently sold its millionth ticket, it's clear that this is the most successful interactive comedy show of its kind.

The cast for Winchelsea Hotel is Eilannin Harris-Black (Sybil), Jamie Burgess (Basil) and Luke Alleva (Manuel).

EXPERIENCE THE WORLD'S #1 EXPERIENCE!

Venue: Winchelsea Hotel, Corner Princess Hwy & Austin St, Winchelsea VIC 3241

Dates: Thursday 18 August 2022

Times: Doors open 6:30pm, show starts 7:00pm.

Tickets: \$90.13 pp (includes fees) – all tickets include a 3-course meal and 2-hour interactive show.

Bookings & enquiries: customerservice@imagination-workshop.com | 1800 BUY TIX (710 499) | <https://www.eventfinda.com.au/2022/faulty-towers-the-dining-experience-winchelsea/great-ocean-rd-otway-ranges>

Facebook: <https://www.facebook.com/faultytowersthediningexperience>



PLANTING TIME ON THE RIVER

COME AND HELP WITH PLANTING

shrubs and grasses

SATURDAY AUGUST 6TH

9-11 AM

Enquiries

Rod Stone 0428 549318

Stewart Mathison 0428 672054

Winchelsea Trading—agents for:

UNIVERSAL TOOL SHARPENING

For all your sharpening needs
Rural—Domestic— Industrial

- Hand tools
- TCT Blades
- Chainsaws
- Kitchen tools
- Garden tools
- Brobos
- Firewood saws
- Bandsaws
- Chipper & planer blades
- Drill and router bits
- Dog & horse clipping blades

5248 2061

'We give you the edge you need'

NO MATTER WHAT YOUR PROBLEM, DODDS ELECTRIX CAN DEFUSE THE SITUATION.

RURAL, INDUSTRIAL, COMMERCIAL. DOMESTIC
PHONE 0438 887 360
EMAIL: DODDSY@FASTMAIL.FM
PO BOX 36 BIRREGURRA, VICTORIA 324
REC: 17520 ABN: 64 581 250 880



5234 6585 0417 385 984
For all your domestic & stock water.
Also available for road and civil construction
Local owned and operated.

TRENCHES & HOLES PTY LTD.



PHILLIP ROBERTSON

☎ 0427 672 945

WINCHELSEA

- General Earth Works
- Driveways
- Trencher
- Kanga Loader
- Grader
- Excavator Work (3.5 & 6.5 Tonne)
- Tip Truck
- Rock Breaker
- Post Holes & Shed Footings

A.B.N 74006896898



St Vincent de Paul Society
good works

Covering Meredith, Bannockburn,
Anakie, Lethbridge, Inverleigh,
Teesdale, Shelford,
Elaine and Winchelsea

52219170

Monday - Friday 9am to 2 pm
<http://www.vinnies.org.au>

A caring Catholic
organisation offering
“a hand up” to all people
in need.

WINCH WEBSITES
WEB SOLUTIONS SIMPLIFIED.

WEBSITES

**GROW business
INCREASE reach
SAVE time**



Find out what a website
could do for you
winchwebsites.com.au
04 887766 20

CONCRETER

Alister Aitken

No job to big or small

- Driveways - Carports - Crossovers - Footpaths -
- Sheds Slabs - Colored Concrete - Concrete
- sealing - Exposed Aggregate - & more -

Call or text for a no obligation free quote

Servicing our local Winchelsea & Surrounding
Areas

alaitken.aa@gmail.com or Alister - 0411 871 950

A.B.N 47 228 574 460

**Property Slashing
and Block Mowing**

FREE QUOTES

Competitive rates for property slashing and
mowing of your block. Servicing entire of Surfcoast
shire and surrounding shires.

Call Scott TODAY to
discuss your needs
and to book in.

0408 523 290

Located WINCHELSEA



IN & OUT LOGISTICS
A Reliable and Local business



Winchelsea Community House

Hours: Monday – Friday, 9.00am - 2.00pm
 Address: 28 Hesse Street, Winchelsea
 Phone: 5267 2028
 Email: reception@winchhouse.org.au



**DO YOU UNDERSTAND THE STEPS TO
 ACCESSING AGED CARE?
 WHY NOT COME ALONG TO AN INFOR-
 MATION SESSION AT WINCH HOUSE TO
 LEARN MORE
 MONDAY 8TH AUGUST, 2022 AT 11AM
 RSVP'S ESSENTIAL
 PH 52672028**



**STAFFING VACANCIES IN OUR OCCASIONAL CARE
 SERVICE
 WE ARE CURRENTLY RECRUITING FOR A CHILD-
 CARE ASISITANT FOR THURSDAYS AND FRIDAYS
 8.45AM TO 2.30PM
 THIS ROLE MUST HAVE A MINIMUM CERT 111 IN
 EARLY CHILDHOOD EDUCATION AND CARE
 WE ARE ALSO RECRUITING FOR OUR OCCASIONAL
 CARE CASUAL STAFF POOL FOR BOTH CERTIFICATE
 111 AND DIPLOMA QUALIFICATIONS
 PLEASE CONTACT OUR OFFICE**

**TERM 3 AT WINCH HOUSE
TAI CHI FRIDAY MORNINGS
 BEGINNER'S - FRIDAYS 9.00AM
 INTERMEDIATE -FRIDAYS 9.30AM
 Cost is \$10 per session**

**Occasional Childcare now has vacancies for
 over 3 year olds.
 Please contact us to arrange a time to have
 a look around our centre.
 PH: 5267 2028**





Winchelsea Community Facebook pages

What's on in Winchelsea - local events, groups and services, Business of the Week
[facebook.com/Whats-on-in-Winchelsea-156731888074402/](https://www.facebook.com/Whats-on-in-Winchelsea-156731888074402/)

Country Women's Association - CWA Winchelsea Branch
[facebook.com/pg/CWAWinchelsea/about/](https://www.facebook.com/pg/CWAWinchelsea/about/)

Winchelsea FREE - Items for Free and Reduce/Reuse/Recycle/Repair tips
[fb.me/groups/406976593073741/](https://www.facebook.com/groups/406976593073741/)

Plastic Wise Winchelsea
[fb.me/groups/1907024999585751/](https://www.facebook.com/groups/1907024999585751/)

Winchelsea Classifieds 3241
[fb.me/groups/2942861684082/](https://www.facebook.com/groups/2942861684082/)

Winchelsea And Surrounds Items For Sale
[facebook.com/groups/Winch/](https://www.facebook.com/groups/Winch/)

Growing Winchelsea
[facebook.com/growingwinch](https://www.facebook.com/growingwinch)

Winchelsea Community House
[fb.me/winchelseacommunityhouse/](https://www.facebook.com/winchelseacommunityhouse/)

Winchelsea Makers and Growers Market
[facebook.com/winchelseafarmersmarket/](https://www.facebook.com/winchelseafarmersmarket/)

Winchelsea Gardeners
[fb.me/groups/779878518703025/](https://www.facebook.com/groups/779878518703025/)

The Winchelsea Star
[facebook.com/TheWinchelseaStar](https://www.facebook.com/TheWinchelseaStar)

Winchelsea Fire Brigade
[facebook.com/Winchelsea-Fire-Brigade-954604661322928/](https://www.facebook.com/Winchelsea-Fire-Brigade-954604661322928/)

Winchelsea and District Historical Society Inc.
[facebook.com/winchelseaanddistricthistoricalsociety](https://www.facebook.com/winchelseaanddistricthistoricalsociety)

Winchelsea Repertory Society Inc.
[Facebook.com/winchrep/](https://www.facebook.com/winchrep/)

Winchelsea Movie Club
[facebook.com/winchelseamovies/](https://www.facebook.com/winchelseamovies/)

Winchelsea Uniting Church
[facebook.com/winchelseaunitingchurch](https://www.facebook.com/winchelseaunitingchurch)

St Thomas' Church
[facebook.com/StThomasWinchelsea](https://www.facebook.com/StThomasWinchelsea)

Surf Coast Youth (includes Winchelsea Skate park activities)
[facebook.com/surfcoastyouth](https://www.facebook.com/surfcoastyouth)

Winchelsea Golf Club
[facebook.com/winchelseagc/](https://www.facebook.com/winchelseagc/)

Winchelsea Blues FC
[facebook.com/WinchelseaFNC/](https://www.facebook.com/WinchelseaFNC/)

Moriac/Winchelsea Kyokushin Karate Club
[fb.me/moriac.winchelseakyokushin/](https://www.facebook.com/moriac.winchelseakyokushin/)

Winchelsea SES
[fb.me/WinchSES](https://www.facebook.com/WinchSES)

Upper Barwon Landcare Network
<https://www.facebook.com/UpperBarwonLandcare/>

Winchelsea Wildlife Shelter
<https://www.facebook.com/wildliferescuerangers>

SCARS (Surf Coast Animal Rescue Service)
<https://www.facebook.com/groups/415211698950674/>
 For immediate help with injured wildlife in Surfcoast and Geelong areas please contact Grant Norris on 0404912856

Surf Coast Community Recycling Project
<https://www.facebook.com/groups/2279122868998929/>

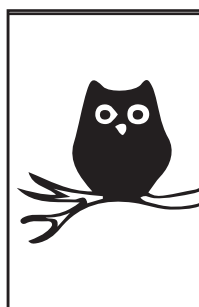
Christmas in Winchelsea
<https://www.facebook.com/winchristmas/>

Winchelsea Lego Club
<https://www.facebook.com/groups/684460825389066/>

Winchelsea Coronavirus Community Support Group
<https://www.facebook.com/groups/2676957719207927/>

Winchelsea Blues Cricket Club
[facebook.com/groups/8999049476/](https://www.facebook.com/groups/8999049476/)

Winchelsea Health Club
[facebook.com/WinchelseaHealthClub/](https://www.facebook.com/WinchelseaHealthClub/)



Café La Hoot

have you tried
'owl' coffee?

1 willis st cafelahoot@gmail.com 0407 528 999



Foot and Mouth Disease

The Victorian Government is taking action to ensure the State is prepared for biosecurity risks from emergency animal

disease (EAD) such as foot-and-mouth disease (FMD).

Victoria is the only jurisdiction to have a mandatory electronic National Livestock Identification System (NLIS) for sheep and goats, supporting rapid traceability, which is critical in a livestock biosecurity response.

The most significant risk of entry of FMD into Australia is through illegal meat and dairy products infected with the FMD virus being fed to pigs.

For more information about FMD, its signs and actions to reduce its spread as well as what to do if you suspect it visit the Agriculture Victoria website – agriculture.vic.gov.au/fmd.



Moksha Project

Alleviate the Body, Educate the Mind, Liberate the Heart, Contemplate your Soul

40 Main Street, Winchelsea
info@mokshaproject.com.au

www.mokshaproject.com.au

- Osteopathy
- Massage Therapy
- Dry Needling
- Physical Rehabilitation
- Ayurvedic Medicine
- Liberate Life Coaching
- Financial Health and Wealth Coaching

Appointments available face-to-face and via telehealth. For further information visit our recently updated Website. Supported by the Surf Coast Shire Council's COVID 19 Recovery Program.

03 52672948 - 0428177964



TASTE OF TAMWORTH



COPACC is providing a free return bus for our community from Apollo Bay via Skenes Creek, Forrest, Borwon Downs and Birre to COPACC and back again - bus times and free ticket available online.

This project was made possible by the Australian Government Regional Arts Fund, which supports the arts in regional and remote Australia.

TASTE OF TAMWORTH

Taste of Tamworth is a unique concert experience that brings a sample of the famous Tamworth Country Music Festival into our own backyard.

Friday 5th August, 7:30pm
Tickets: Adult \$45, Concession \$40

Book your tickets via www.copacc.com.au, call 03 5232 2077 or visit the Box office in the COPACC Foyer



Proudly sponsored by **Herald**

Winchelsea Taxis is now Surfcoast Taxis

Our fleet of vehicles are growing to all late models and we are covering an extended area including Winchelsea, Colac, Bannockburn, Inverleigh, Great Ocean Road and Geelong.

We have a fleet of 10 seater Maxi Vans, all with capacity to carry wheelchairs.

Surfcoast Taxis Pty Ltd
All Bookings: 0408 325 992
Fax: 5267 2699
Email: bannotaxis@gmail.com
 (Admin or Stan 0429 672 888)
 66A Batson Street
 Winchelsea 3241



Accounts NDIS provider. TAC, DVA etc

NDIS provider number 4050001044

NDIS provider number 4050001048

Book your next ride with

smartHAIL



Book

Track

Pay

Rate

Download on the
 App Store

GET IT ON
 Google Play



Chiropractic - Remedial Massage - Myotherapy - Sound Healing - Breathwork



Chiropractic care for:

Stress & Anxiety	Pain Management
Body Aches & Tension	Family Wellbeing
Poor Sleep	Health Longevity

03 5267 2240 Shop 4/21 Hesse St Winchelsea   <https://onebodychiropractic.com.au/>




36 Main Street, Winchelsea

Bulk Bills patients on Pension, Health Care Card and Children
Enquiries and Bookings please phone 03 52 928 028 or
www.winchmc.com.au

We are a vaccination provider   **COVID-19 VACCINATION**
Safe. Effective. Free.

NATURAL GAS CONNECTIONS

M. & L DRAYTON PLUMBING SERVICES

YOUR LOCAL LICENSED

- PLUMBERS (24356)
- GAS FITTERS
- GAS CONVERTERS
- CARBON MONOXIDE TESTING

MARK 0428 520 142



Marlac Veterinary Clinic
0447 781 089
PHONE 24 HOURS
784 Hendy Main Road Marlac
info@marlacvet.com
www.marlacvetclinic.com.au
HOURS // Monday - Friday: 8am - 5pm



RONNIE.
Winchelsea's pet groomer.
For appointments
0436 008 989
ronniespetgrooming.com.au





REGISTERED Building Practitioner

- NEW HOMES
- ALTERATIONS
- GARPORTS
- BATHROOMS
- EXTENSIONS
- DECKS
- VERANDAHS
- WINDOW REPLACEMENTS
- RENOVATIONS
- PERGOLAS
- RE-GLADS

LEIGH LUPTON
0438 840 104

CHRIS LUPTON
0407 681 514

LEIGHLUPTON17@GMAIL.COM Est. 1977

Commercial | Industrial | Domestic

HAMILTONS

Truck & Bobcat Hire
Give Aaron a Call
0438 438 623



R.A.K. DAVIS & SONS

CARTAGE CONTRACTORS

WINCHELSEA

**SUPPLIER OF ALL QUARRY MATERIALS, TRUCK HIRE
CARTAGE OF GRAIN, LIME, GYPSUM & SUPER
LANDSCAPE & GARDEN SUPPLIES**

56 WILLIS ST, WINCHELSEA
Ph – 5267 2094
Ryan – 0438 672 281
Email: rakdavis@bigpond.com

Scott McDonald
0423 413 829



S.J.R AUTOMOTIVE
ABN 942 463 646 39
13 ALSOP DRIVE, WINCHELSEA VIC 3241



5234 6585 0417 385 984
*For all your septic tank, grease traps
and interceptor pits servicing.
Locally owned and operated*

TREE WORKS & STUMP GRINDING



Fully insured and qualified
climbing arborists.
Slashing and fire preparation.
FREE QUOTES
0488 553 650
Mathieu Vaupres

www.colactrees.com.au

Funeral Planning

Working out what is best for you.
Prepaid Funerals, Funeral Bonds, Pay-by instalments...

There are many options and its important to make the right choice.

Alyson Burchell will be available by appointment to answer any questions about funerals and planning ahead.



For more information or to make an appointment contact Sue on 5221 4788

*Tuckers Community Office,
Surf Coast Taxation Services, 22 Willis Street,
Winchelsea*

**First Tuesday of the Month,
by appointment 10.00am - 12.00pm**

Caring for families since 1883

Tuckers
A Funeral & Bereavement Service
— for a life worth celebrating.

5221 4788
www.tuckers.com.au

CHARLES STEWART

rma network Accredited Member

Charles Stewart & Company are leading livestock and real estate service providers covering Victoria's south west

	LIVESTOCK
Jamie McConachy	0418 522879
Peter McConachy	0408 522878
Matt Nelson	0428 315400
Gerard Bohan	0400 005541
Lachie Barclay	0438 346291
John Thornton	0408 526367
Dougal McIntyre	0439 575612
Ross Spitty	0419 539717
	REAL ESTATE
Michael Stewart	0418 520467
Daryl Osborne	0419 388341
Anthony McDonald	0418 593597
Gerard Bohan	0400 005541
Stephen Lugg	0417 556098
Josh Lamanna	0417 586032


Office
56 Bromfield Street, Colac
www.charlesstewart.com.au





Pixie Wash

Mobile Doggie Care
Dogs up to 20kg
Pixie Heath
0417 586 080



One Stop auto Shop
17 Alsop Drive

- ❖ LOG BOOK SERVICE
- ❖ AUTO ELECTRICAL
- ❖ TOWING
- ❖ AIR CONDITIONING
- ❖ CLUTCH & BRAKES
- ❖ TYRES
- ❖ WHEEL ALIGNMENT
- ❖ BATTERIES

CAR, TRUCK REPAIRS & Roadworthys

PH: 5267 3001
Mob: 0417 137 457



GREAT Bundle Deal on Bosch Hot Water... FROM ELGAS

Buy any Bosch Bluetooth continuous flow hot water model - 16Litre, 20Litre or 26Litre and **Receive \$100* in Elgas bonus LPG gas credits**

*For more details: www.elgas.com.au/appliances/bosch-cptflow-16-20-26-lpg-bundle-sale

AND... for new customers, an additional \$80 WORTH OF LPG GAS CREDITS when you open a new LPG Gas account with Elgas**

**Further details can be viewed at: www.elgas.com.au

Ask about the Elgas Easy Payment Plan - 12 months interest free*** on selected LPG appliances

***Further details can be viewed at: www.elgas.com.au/epp

Automatic tanker gas bottle refill OR gas bottle exchange refill is available for home or business....
Call today or visit our website for our many customer benefits and latest offers

131 161
www.elgas.com.au

ELGAS

From \$780 or \$52.50 per month

NO CONTRACT TO SIGN

©2019 ELGAS LTD.

STS ACCOUNTING GROUP

Your Taxation & Superannuation Specialists.

Winchelsea
5267 2673
www.surftax.com.au

VENUE 0064

STORAGE KING

SIMPLE STORAGE SOLUTIONS

- Personal & Business Storage
- Boat, Caravan & Vehicle Storage
- High Security Premises
- Individually Alarmed Units
- Electric Gate Access
- 7 Day Access & CCTV

YOUR STORAGE PROBLEMS SOLVED

5267 3116
6 ALSOP DRIVE, WINCHELSEA 3241



- Domestic and Commercial hire equipment
- Industrial welding gas
- Digging and Earthmoving equipment
- New trailers and trailer repairs
- Firewood
- Stockists of Royal Oil Lubricants products
- LPG for domestic and commercial requirements

Give Chris and the Team a call on **5232 1177** or email info@colachire.com.au

www.colachire.com.au
101 Wallace St Colac 3250

COLAC HIRE

M & L DRAYTON PLUMBING SERVICES

REG No 24356 C/A No C02594

- Domestic and Rural Plumbing
- Roofing
- Sewerage & Septic
- LPG & Natural Gas Connections
- Motorised Drain Cleaning
- Backhoe Hire

Phone Mark 5288 7244
PO BOX 98 WINCHELSEA 3241
Mobile 0428 520 142

DIRECT TEMPORARY FENCING HIRE
Supplied & Erected 7 days
Geelong—Bellarine—Colac
Phone Rick Dodd
0417 310 800

Aquafire Healing
Transforming Your Health Through the Healing Power of Nature

NATUROPATHIC MEDICINE • HERBAL MEDICINE
NUTRITIONAL MEDICINE • HOMOEOPATHY
REMEDIAL MASSAGE

www.aquafirehealing.com
Ph: 0415 530 276

SOUTHERN GRAIN STORAGE PTY. LTD.

AG SUPPLIES FERTILISER GRAIN STORAGE SEED CLEANING

(03) 5267 2351

HF RICHARDSON
PROPERTY

Servicing all your real estate needs
Ken McDonald **0418 524 150**

Residential | Rural Lifestyle | Agricultural Farms







Volunteers Required

- Bus Driver & Outings Assistant
- Appointments Escort
- Resident Visitor
- Social Support Activities
- Events and Activities Assistant
- Gardening - Winchelsea
- Group Wheelchair Walks Assistant

Volunteers are essential to our aged care system, supporting the wellbeing of older people in their homes and in residential settings



For more information please contact Jessica Culhane, Communications and Community Partnership Officer via phone on **053 5267 1200** or via email jculhane@hesse.vic.gov.au

AFS BOOKKEEPING



"Your local bookkeeper"

Bookkeeping
 Administration
 Payroll
 BAS Services
 Xero / Myob
 Reckon / Quickbooks
 Registered BAS Agent

Angelique Snetselaar

0456 077 485

info@afsbookkeeping.com.au
www.afsbookkeeping.com.au





Winchelsea Supermarket

Trading Hours

Monday to Saturday
8:30am to 7:30pm

Sunday
10am to 7pm

Ph: 5267 2676

29 Main St, Winchelsea

Services Available

- Acute Hospital
- Urgent Care
- Residential Aged Care
- Dementia Specific Care
- Home Care Packages
- District Nursing
- Diabetes Education
- Dietician
- Occupational Therapy
- Podiatry
- Physiotherapy
- Planned Activity Groups
- Community Health Groups
- Palliative & Continence Care
- Maternal Child Health



5267 1200
 Servicing Winchelsea, Bannockburn, Beeac,
 Rokewood, Teesdale and Districts

Wightons Lawyers

Dispute Resolution & Litigation

Debt Collection

Property Law

Wills & Estates

Powers of Attorney

Business Law

Family Law

By appointment only

22 Willis Street, Winchelsea
 ph. 5221 8777

www.wightons.com.au

RM & ME PLUMBING Pty Ltd

All General & Rural Plumbing

NEW HOMES, RENOVATIONS, EXTENSIONS

SEPTIC TANK INSTALLATIONS

SAND FILTERS, TREATMENT PLANTS

Agents for CLARK WATER TANKS

Ross Matthews

0417 561 558

Murray Ellis

0434 600 139

Green Lead Electrical

Connecting you to a greener future
VIC 23618

0467 097 101



Servicing Geelong & the Surf Coast

Specialising in all residential electrical work including:

- Switch board & lighting upgrades
- Outdoor lighting
- Electrical safety checks
- Energy efficient LED lighting
- Ceiling sweep fans & ventilation
- Energy saving advice

Phone Martin Wilkinson:

0467 097 101

greenlead@outlook.com

132268-CG18-14



Winchelsea Towing
24 Hour Accident and Breakdown Towing
0418 535 402



ISSN 2202-6851



Time for a home loan health check!

With interest rates on the rise, there's never been a better time to review your home loan.

We'll look at your rate, term, repayments, and equity, giving your loan a full check-up to make sure it's still right for you and your current needs.

Enquire online at bendigobank.com.au/healthcheck or visit your nearest branch.

📍 **Community Bank - Winchelsea & District**
 Contact - Julie Dunkley 0466 217 889
 Branch Manager



Bendigo Bank

All loans are subject to the bank's normal lending criteria. Fees, charges, terms and conditions apply. Please consider your situation and read the Terms and Conditions, available online at www.bendigobank.com.au or upon request from any Bendigo Bank branch, before making a decision. Bendigo and Adelaide Bank Limited ABN 11 068 049 178 AFSL

AVAILABLE FOR HIRE Vermeer and 4in1 bucket
 Augers
 Forks
 Smudger

For more information phone 0409 433 687 or visit our facebook page MGT Carpentry

MGT CARPENTRY