

Winchelsea Star

Price \$1

Your Weekly Community Newspaper

Since 1977

Vol 47 Ed 08

Tuesday 5 March 2024

winchelseastar.org.au

West Coast Bowls Region



Mens Fours Champions

All 3 Saturday Winchelsea Blues Bowls teams reach grand final, to be played 9th march under the Dome at Colac (more Page 3)



**HAVE
YOUR SAY**

Have your say about our unsealed roads

Council is reviewing the maintenance and renewal of unsealed roads in the Surf Coast Shire.



YOUR INPUT IS IMPORTANT

We want to hear from the community about issues, safety concerns and expectations you have about unsealed roads.

You can learn more about the project and contribute by:

- Filling in the survey via the QR code
- Or go to yoursay.surfcoast.vic.gov.au/unsealedroads

COME AND TALK TO US AT OUR COMMUNITY DROP IN SESSIONS

- Aireys Inlet Market on 10 March (9am–12pm)
- Moriac Community Centre on 16 March (9.30am–12.30pm)
- Connewarre Memorial Hall on 16 March (2–5pm)



For more information about the project go to surfcoast.vic.gov.au/unsealedroads



Winchelsea Bowls Club

By Kitty 'n Jack

WINCHELSEA BLUES BOWLS ALL 3 SATURDAY TEAMS REACH GRAND FINAL TO BE PLAYED ON 9TH MARCH UNDER THE DOME AT COLAC.

Great news for the Winch Blues Bowls as the Midweek and Saturday Pennant seasons draw to a close and finals commenced.

It has been a wonderful season which has eventuated in all 5 teams at the club reaching the finals. Division 1 and Division 3 midweek both finished in 3rd position but were unfortunately defeated in the 1st final. Division 1 were defeated by Colac City by 10 shots and Division 3 were defeated by Camperdown Golf by 2 shots. Trying harder to sustain further progress in 24/25 season.

Saturday Pennant home and away was completed on the 17th of February and the results were fantastic for the 3 Divisions all finishing in 2nd position on their respective ladders. The following week Division 1 defeated Ladder leaders Apollo Bay and went straight through to the Grand Final. Unfortunately, Division 2 was defeated by Colac 2 with the margin being 8 shots and Division 4 were defeated by Camperdown Golf 4 with the margin being 5 shots.

On Saturday the 2nd of March Division 2 defeated Camperdown Golf 2 to progress to Grand Final and Division 4 defeated Cressy 3 to progress to Grand Final. A wonderful effort by all concerned and a mighty achievement by the club to have all 3 teams reach the Grand Final together. The program will be Winchelsea 1 vs Colac 1, Winchelsea 2 vs

Colac 2 and Winchelsea 4 vs Camperdown Golf 4.

AROUND THE GREEN

The Men's Mixed 4's team consisting of Jason Laird, Jason Armstrong, Ernie Andres and Luke Wright (Camperdown) won through to Country Week. Congratulations to the team a wonderful effort may you continue your success.

In the Champion of Champions Regional Final on February the 18th and played at Warrnambool Sheryl Laird was defeated by Gayle Swanson of Dennington bowls club however, Rhys Jeffs defeated Scott Boschen of Koroit Bowls Club. So while it is commiserations for Sheryl it is onward and hopefully upward for Rhys when he goes into Country Week.

At the club level the Men's Championship Triples, Ladies Championship Pairs and Mixed Pairs Championship are continuing to be played.

Over the past 5 weeks we have had over 200 people experience Come Try Bowls and our live music which has now come to a conclusion for Friday nights although the club is always happy to welcome those keen to keep having a go of a Friday and bowls will be available.

Obviously, the coming week will be full of preparation for the Grand Finals and travel to practice under the dome as well as at home. We are all hoping to be successful on this coming Saturday so may the bowls please be with us!!

Letter to the Editor

In reply to the letter about the unfortunate soul that had a fall in front of the Bakery in the Winch shopping centre I really have to agree with the Surf Coast Shire in denying that the problem lies on their doorstep

These yellow covers are usually left in place over broken Telstra pits and therefore don't come under the Shire's responsibility so if you need someone to take responsibility for this ongoing problem get onto Telstra and or the NBN contractor that left it there

Brian Bohan

Beginners Bridge

by Elaine Atkinson

Just a quick reminder to say everything is GO for Beginners Bridge at Senior Citizens Club, Harding Street WINCHELSEA next Tuesday 5 March 10 - 12 noon.

Just bring yourself some cash to pay for the course (will be less than \$40 pp) and come and enjoy learning this great card game. You will be hooked I am sure.

There will be meeting notes each week - the first week Arthur will talk about the history of Bridge, the basics of the game, etc.

Arthur will bring some books the following week that will be available for purchase for \$20 each - a great tool to refer to time and again.

We will have a coffee / tea break midway through.

Look forward to seeing you.





NATIONAL CENTRE FOR
**FARMER
HEALTH**

in association with



CALM THE FARM

CREATING A HAPPY HEALTHY WORKPLACE

Are you interested in reducing risks to mental health in your farm workplace by improving your work systems, or doing things a bit differently?

Join us for an interactive and engaging **two-hour** workshop that explores ways of reducing work-related stress.

Connect with other local farmers as you focus on practical solutions to improve job satisfaction and effectiveness for you and your team.

Continue the conversation over a nutritious meal - **ON US!**

Event details

DATE: TUESDAY 26 MARCH 2024
TIME: 5:00pm for a 5:30pm start
Followed by dinner
COST: FREE
LOCATION: Inverleigh Public Hall,
71 High St, Inverleigh VIC 3321



Key focus areas



Understanding the main work-related risk factors to farmers' mental health

What are the factors in the management of farm work that can affect the wellbeing of farmers and farm workers?



Explore how these may be impacting you and your farm business

How does it play out at your farm? What are the solutions and what can be improved?



Develop your own plan to stay on track

Use tools designed specifically for farmers - like 'Steering Straight' to identify ways to keep you positive and focused, and create a support network

RSVP: 18 March 2024
(Essential) Hannah Walker or Brooke Greig
5267 1200
Healthpromotion@hesse.vic.gov.au



This program is supported by Western Victoria Primary Health Network under the Australian Government's Primary Health Networks Program.



LIMITED SPOTS AVAILABLE!

RSVP NOW TO BOOK YOUR SPOT



parkrun report for 3rd March 2024

by Neil McInnes

This week 27 people ran or walked the course through Trebeck Reserve. Congratulations to the 8 people who did their first ever parkrun. Representatives from 2 other parkruns took part. There was 1 visitor from Oxford in the UK and one dog – Teddy.

This event was made possible by the following volunteers:

- Sam INGLIS
- Murray AISBETT
- Don SMITH
- Neil McInnes
- Kate McINNES
- John HUTTON
- Bruce PURDIE
- Mark HUBBARD
- Alan WISHART

Thanks to the Winchelsea Lions and Winchelsea Running Group for their volunteer support.

This event was the final trial prior to our formal launch on Saturday 9th of March. A weekly parkrun event will now be conducted every Saturday.

Welcome and briefing at 7:50am with the run / walk starting at 8:00am. Venue is through Trebeck Reserve with the start & finish area off Sussex Street.

If you are not already registered, please go to parkrun.com.au/register and complete the simple online form. Click on the dropdown list to select 'Trebeck Reserve'

People who have previously registered with another parkrun are now able to update their profile to Trebeck Reserve.

Registration is a once off process and allows recording of your results from any parkrun event globally. A summary of your results will be emailed to you soon after each event you participate in.

This week there were 483 parkrun events conducted in Australia and around 5,000 worldwide, all of a similar format.



Time to act on farm carbon

The moment for farmers to act on carbon emissions is now, a major carbon forum in Winchelsea was told this month.

AgVic climate specialist Graeme Anderson told more than 110 attendees that despite carbon being a hot topic for many years, emissions were continuing to rise.

On the current climate trend, Melbourne would likely experience extreme heat days of 50 degrees by 2050, and inland would be even hotter, he said.

However, Mr Anderson said, attitudes towards climate change and carbon emissions were changing dramatically, with major agricultural companies now targeting carbon reduction, and all Australian governments having adopted carbon reduction targets.

And farmers had a special role to play, as both sources and sinks of greenhouse gases.

He said an AgVic pilot trial of 250 farms was underway, which involved an audit to calculate farm carbon inputs and outputs, and to test alternative means for achieving a net reduction in emissions.

Mr Anderson said farmers looking to reduce emissions by selling carbon offsets, usually through tree planting, should be wary of locking themselves into long-term commitments, particularly when it came to selling property.

He concluded that carbon reduction would be essential for farmers to retain competitiveness, and that constant measurement would be necessary to provide evidence.

Meat and Livestock Australia's Margaret Jewell said the national livestock sector had lowered its emissions by 65 percent between 2005 and 2020, although that was partly due to lower stock numbers through drought.



Ms Jewell said feed additives could reduce emissions by 30-40 per cent with little impact on production, with work underway on the best methods to achieve this.

University of Melbourne economics professor Bill Malcom said all producers should concentrate on what they do "comparatively efficiently", and trade with others who have a comparative edge. He used the example of Australia selling wheat to Japan, while buying cars from Japan.

Prof Malcolm said it therefore made sense for a farmer whose land was suited to carbon capture and storage to sell carbon credits to another farmer who lacked that comparative advantage. For instance, western Victoria's soils and rainfall should give an edge over those in northern Australia.

The forum was organised by the Surf Coast Inland Plains Landcare Network and the Upper Barwon Landcare Network.

The forum was part of a series that includes a Soils and Livestock on-farm workshop at Freshwater Creek on Friday March 22 and a Trees On Farm forum on Friday April 19 at Deans Marsh.





Drug driving? The consequences will blow your mind.

Police are conducting drug tests across Victoria, which helps to keep our roads safe. Being caught with illicit drugs in your system could result in a minimum fine of \$577 and possible licence suspension. Drug driving? Chances are you will be caught. Anywhere. Anytime. Anyone.

TAC 



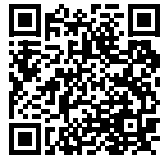
GRANTS

NOW OPEN

Open on 1 March
closes on 31 March

- **Community Initiative Grants up to \$5,000**
- **Natural Environment Grants up to \$8,000**

Scan the **QR code** to find out more or call grants team on **5261 0600** to discuss your idea and ask any questions.



surfcoast.vic.gov.au/Grants



Regional Rail Autumn Work Blitz

Significant works are planned throughout autumn to help add more services, remove level crossings and improve facilities for regional passengers.

A large package of works will take place in the state's north-east, with coaches replacing trains between Seymour and Shepparton and some trains between Southern Cross and Seymour from 9 March to 14 April.

Works will continue on the South Geelong to Waurin Ponds Duplication and Stage 2 of the Warrnambool Line Upgrade during two separate week-long disruptions to trains in April (Saturday 13 to Sunday 21) and May (Saturday 11 to Sunday 19).

Duplicated rail will be installed in Grovedale and bridge piers will be installed in South Geelong – allowing dangerous and congested level crossings to be removed later this year.

New train detection technology and safety improvements will be installed at level crossings in across western Victoria to allow modern VLocity trains to run to and from Warrnambool for the first time when the project is finished.

V/Line crews will carry out maintenance and infrastructure improvements in April, including in and around the rail tunnel between Geelong and South Geelong.

Motorists travelling between Melbourne and Gippsland will detour through Pakenham as the eastbound lanes of the Princes Freeway close from 12 April to 15 April for asphalt strengthening works, as part of the Pakenham Roads Upgrade which will improve traffic flow and reduce bottlenecks.

Passengers planning to travel during these disruptions should allow up to 60 minutes extra for their journey and check the temporary coach replacement timetable before travelling, which will be available from the V/Line and PTV websites closer to the start of works.



Winchelsea Taxis is now Surfcoast Taxis

Our fleet of vehicles are growing to all late models and we are covering an extended area including Winchelsea, Colac, Bannockburn, Inverleigh, Great Ocean Road and Geelong.

We have a fleet of 10 seater Maxi Vans, all with capacity to carry wheelchairs.

Surfcoast Taxis Pty Ltd
All Bookings: 0408 325 992
Fax: 5267 2699
Email: bannotaxis@gmail.com
(Admin or Stan 0429 672 888)
66A Batson Street
Winchelsea 3241



Accounts NDIS provider. TAC, DVA etc

NDIS provider number 4050001044
NDIS provider number 4050001048



- Domestic and Commercial hire equipment • Industrial welding gas
- Digging and Earthmoving equipment • New trailers and trailer repairs
- Firewood • Stockists of Royal Oil Lubricants products
- LPG for domestic and commercial requirements

Give Chris and the Team a call on **5232 1177** or email info@colachire.com.au

www.colachire.com.au

101 Wallace St Colac 3250



Barwon River Closed Due To Blue-Green Algae Outbreak



The Corangamite Catchment Management Authority has temporarily closed the Barwon River in Geelong following a blue-green algae outbreak.

The Barwon River is closed with warning signs placed along affected stretches of waterway to notify the public.

A combination of hot weather, low water flows and high nutrient levels in the Barwon River have contributed to the outbreak. Testing on 28/2 has shown that high levels of toxic blue green algae have been found in two sampling locations.

During algal outbreaks, people and their pets should avoid contact with the water. It is strongly advised that users of the river do not come into physical contact with the water, due to the potential health risk posed by blue green algae.

Contact with blue-green algae can cause skin rashes, eye and ear infections, vomiting and diarrhoea, mouth ulcers, sore throat and asthma symptoms.

Corangamite CMA advise that people should avoid eating shellfish or fish caught in contaminated water.

The Corangamite CMA will notify the public as soon as conditions change, and the river is safe to be reopened to the public. The safety of the public is the Authority's number one priority.

Anyone experiencing a reaction should seek medical help.

Blue-green algae blooms can be seen with the naked eye across the water surface. However blue-green algae toxins are colourless and odourless and can remain at dangerous levels in water even after the blooms have disappeared.

For information or to report a suspected blue-green algae outbreak, contact Corangamite CMA on 1800 002 262. or www.ccma.vic.gov.au

WE'D LOVE TO SEE YOU AT
Winchelsea Playgroup

EVERY SECOND THURSDAY AT ST. THOMAS'S
ANGLICAN CHURCH, WINCHELSEA
10AM - 12PM
GOLD COIN DONATION
BRING A PIECE OF FRUIT TO SHARE

TERM 1 PLAYGROUP DATES:
22/2/24
07/03/24
21/03/24
04/04/24

COME BE PART OF OUR
FACEBOOK COMMUNITY



International

Back-to-Back

WOOL CHALLENGE

Watch 4 teams go head to head to blade shear a sheep, spin the wool and knit a jumper in the shortest time possible, all while raising money for cancer research

WHAT'S ON?

Food | Beer & Wine | Blade Shearing Demos
Local Gin | Market Stalls | Yarn Shop

WHEN?

Saturday 20th April 2024
8am til late



A FULL-DAY OF WOOL CRAFTED FUN

Blade shearing demos

- 8am
- 10am
- 11:30am
- 1pm
- 2:30pm
- 4pm

Find out more



For event details email
events@tarndie.com

WHERE:

Tarndwarncoort

5459 Princes Hwy. Warncoort Vic.

[Find us on Google](#)

TRANSPORT OPTIONS:

- Car parking available at Tarndie.
- Bus transport **from** Birregurra Train Station to Tarndie at 9:05am & 3:05pm
- Bus transport back **to** Birregurra Train Station from Tarndie at 1pm & 6:50pm
- \$5 each way for bus transfers.



MRP Steelworx

Matthew Partridge
p 0418 672 334
e mrpsteelworx@yahoo.com.au

Welding Service

- Onsite welding
- Farm maintenance
- Farm machinery & equipment repairs
- Cattle & sheep yards
- Custom built trailers
- Supply & install gates

5234 6585 0417 385 984
For all your domestic & stock water.
Also available for road and civil construction
Local owned and operated.

52672192 R & K Creative Framing
for all your framing needs

free quotes
pension discount
specialist in Age & Disability Modifications

Ray & Kim Jansen
10 Witcombe st
Winchelsea 3241

Ray The Home Maintenance HANDYMAN
abn 47529623462

0414672192

Winchelsea Supermarket

Trading Hours
Monday to Saturday
8.30am to 7.30pm
Sunday
10am to 7pm
Ph: 5267 2676
29 Main St, Winchelsea

Antique Repairs

By **Doug Burns** est. 1976

- All Furniture
- French polishing
- Carving
- Veneering
- Wood Turning
- Porcelain

Unusual Requests Welcome

180 Barwon Terrace, Winchelsea

0428 672 704

All About

Mowers & Chainsaws

Repairs to all makes and models of ride on mowers, domestic mowers, pumps, chainsaws, brushcutters and small engines.

Trading Hours: Mon - Fri 8am - 5pm Saturday 8am - 12 noon

5267 2266 Cnr Princes Hwy & Lennox St Winchelsea

www.allaboutmowers.com.au
accounts@allaboutmowers.com.au

SOUTHERN GRAIN STORAGE PTY. LTD.

AG SUPPLIES FERTILISER GRAIN STORAGE SEED CLEANING

(03) 5267 2351

Simco Plumbing and Gasfitting

24/7 Emergency service Ph:0400643976

- All General Plumbing and Gasfitting
- Roof and Gutters, Hot Water service changeover
- Split Systems, Air Conditioning and Wood Heaters
- Irrigation, Septic and Treatment plants
- Excavation, Bobcat and Tipper
- Rain water Tank installation
- Renovations and Extensions
- Gas conversions and servicing

Simon McGillivray
Lic:109610. Free quotes, Fast and friendly service

Winchelsea Men's Shed

For The Community
Men's Shed Kindling/Offcuts
Bags of Kindling/timber offcuts
are available for pick up from
the Men's Shed on Wednesday's
from 9.30 to 2.30.
If you need a delivery made you
can call Bill on 0438 083 373.
The price for a bag of kindling is
now \$7.00 (up from \$5.00).
Nesting Boxes
Bird or animal nesting boxes are
available from The Men's Shed.
These can be made to order.
Call in on any Wednesday
to have a chat.

contact us

NEWS and ARTICLES ARE MOST WELCOME

Include name and address of the sender
 Email news@winchelseastar.org.au
 Leave hard copy at IGA Supermarket

DEADLINES

5pm Fridays

4pm Sundays - hard copy articles left at IGA
 6pm Sundays - sports results and weekend events

FREE DIGITAL SUBSCRIPTION

winchelseastar.org.au

ADVERTISING

advertising@winchelseastar.org.au 0408 102 802
 600 online subscribers,
 250 copies printed for outlets around Winchelsea

follow us

ONLINE

winchelseastar.org.au

FACEBOOK

facebook.com/TheWinchelseaStar

PRODUCTION

Editors:	Carrie Fogan, Yvonne Stevens, Judy Cameron
Advertising:	Sasha Gauntlett, Neil McInnes
Design:	Tony Phelps, Susan Corby
Printing:	Winchelsea Community House
Website:	Winch Websites

COMMITTEE

President:	president@winchelseastar.org.au Mick O'Mara
Treasurer:	treasurer@winchelseastar.org.au Cathy Cheadle
Secretary:	secretary@winchelseastar.org.au Tony Phelps
Members:	Linda Carter, Sasha Gauntlett, Neil McInnes, Judy Cameron, Yvonne Stevens, Carrie Fogan,

© Winchelsea Star Org. Inc. All rights reserved
 Winchelsea Star Organisation Inc.
 Reg. No. A0053999F, ABN: 75 941 529 279
winchelseastar.org.au PO Box 5, Winchelsea, 3241
 Views expressed are not necessarily those of the
 Winchelsea Star or its Committee. The Winchelsea
 Star reserves the right to edit or not publish any article.



You can write for the Star

We want the Star to inform, engage, inspire, and interest the residents of Winchelsea and surrounds. And we need your writings to get there.

The Star has no actual reporters or designated writers - we publish what you send us. If you have some news, an opinion, an interest or perspective, or a story - we'd love you to send it in for publication.

The Star loves to hear anything of direct interest to the Winchelsea community. The more local content we can put in, the better!

How much can I write?

You can write just one article. You can start a new column about something you're interested in. You can send us a series of articles on a theme. What would **you** write about?

Your article can spread over 1 or 2 pages (approx 850 words) or you can write longer pieces and split them across multiple editions.

Add a photo or two, an article title and author's name (preferably).

Can you publish my photos?

A picture is worth a thousand words - but context is very interesting too! If you have a photo you'd like in the Star, add a few words describing where, when, who, why and/or what.

Ask permission to use photos

When you send us a photo, you give us implied permission for reproduction.

You have liability when publishing an image, so be sure you own the image or have written approval to use it. It is easy for copyright owners to find stolen images online, where the Star can be found.

Legalities

Our Editors will not approve anything libellous (ie. when a false statement is published in written form and does harm to a victim). The Star is a community newspaper - 'for' and 'against' opinions on contentious topics are welcome, but attacking individuals or groups is not.

We look forward to hearing from you.

Simply email editor@winchelseastar.org.au



Winchelsea Star

COMMUNITY NOTICEBOARD

FREE ADS

editor@winchelseastar.org.au or leave at Winchelsea IGA

PICKLEBALL AT LTC

Wednesday evenings 7.00-8.30 &
Thursday mornings 10.00-11.30
\$5 pp. [to cover LTC hire]

All equipment supplied,
just wear suitable footwear.

All welcome!

Enquiries to Lesley Mathison
on 0438672197

WINCHELSEA OP SHOP

No Furniture Accepted!

Donations of good clean items
accepted Sat-Mon only, 10am-2pm

Shop Hours: Fri-Mon, 10am-4pm

FOR SALE

"Charlotte" is a Speckled Park X Heifer. Born 28/4/23. She is extremely friendly and was hand reared at a local petting zoo. She loves cuddles with children/ adults, and will make the perfect pet. She is halter trained, likes going for a drive in the trailer, allows you to hand feed her, loves to be bathed and brushed, and will give you kisses. Regretful sale. \$1300. Pickup Buckley

Phone Chloe on 0493039133 for more information.

'WHAT A GREAT IDEA!'

Timber coffee cup holders
available from
participating coffee shops or
Winchelsea Lions 0476 475 422

Saves on landfill and
100% funds raised go back into the
community.

\$2 for 2 cup holder,
\$4 for 4 cup holder



WINCHELSEA OP SHOP CHILDREN'S CLOTHING AND SHOE SALE

Once again The Winchelsea Op Shop will be offering their Children's \$5 a bag sale of children's clothing and shoes.

Sale will commence on Friday 8th
March until Monday 25th.

Please note that the Winchelsea Op Shop Trading Hours will be 10 til 3 at the end of March.

Thanks for your continued support.

WINCHELSEA TENNIS CLUB

Junior Coaching

The Club is offering Junior Coaching sessions every Monday from 3.30p.m. with the experienced Nicole Mullen, at a very reasonable \$10 per session!

Junior Coaching is open to all school age kids, but Nicole will also coach other age groups, if required!

So get along and have a chat to Nicole about tennis coaching and improving your kids and, maybe, your own game!

Social Twilight Tennis

We are also having Social Twilight Tennis on Monday evenings from 6.00p.m. Starting 12th February until the end of March (end of Daylight Saving).

Come along for a social hit, meet some new people and enjoy a relaxing evening of tennis!

All Welcome!

FOR SALE

2019 HOLDEN COLORADO LTZ

- 51,000km
- Transmission cooler
- Brand new tyres (only done 5000km)
- Constant 300kg springs in rear with new shocks
- Dual battery set up with red arc BCDC charger
- Redarc electric brakes
- Tub rack
- 2 x Anderson plugs
- Wired safety Dave camera
- Car will come serviced and RWC



\$45,000 ONO

Queries welcome

Please contact Dallas 0448 852 909

the
winchelsea star

A community newspaper for Winchelsea and district

Since 1977



The Climate Report

Is there an alternative to 10,000 kilometres of new transmission lines? Yes – but you may not like it

Judy Cameron

Authors

Magnus Söderberg - Professor & Director, Centre for Applied Energy Economics and Policy Research, Griffith University

Phillip Wild - Senior Research Fellow, CAEEPR, Griffith University

Building transmission lines is often controversial. Farmers who agree to host new lines on their property may be paid, while other community members protest against the visual intrusion.

Pushback against new lines has slowed development and forced the government to promise more consultation.

It's not a new problem. Communities questioned the routes of earlier transmission lines built during the 1950s-70s to link new coal and hydroelectric plants to the cities.

But this time, the transition has to be done at speed. Shifting from the old coal grid to a green grid requires new transmission lines. In its future system planning, Australia's energy market operator sees the need for 10,000 kilometres of new transmission lines in the five states (and the Australian Capital Territory) which make up the National Energy Market.

Do we need all of these new transmission lines? Or will the "staggering growth" of solar on houses and warehouses coupled with cheaper energy storage mean some new transmission lines are redundant?

The answer depends on how we think of electricity. Is it an essential service that must be reliable more than 99.9% of the time? If so, yes, we need these new lines. But if we think of it as a regular service, we would accept a less reliable (99%) service in exchange for avoiding some new transmission lines. This would be a fundamental change in how we think of power.

Why do we need these new transmission lines?

The old grid was built around connecting a batch of fossil fuel plants via transmission lines to consumers in the towns and cities. To build this grid – one of the world's largest by distance covered – required 40,000 km of transmission lines.

The new grid is based around gathering energy from distributed renewables from many parts of the country. The market operator foresees a nine-fold increase in the total capacity of large scale solar and wind plants, which need transmission lines.

To avoid having to build transmission lines everywhere, policymakers have opted to group renewables in "renewable energy zones" with good wind or solar resources, and build transmission lines just to the zones.

According to the market operator, the major reasons why we need such a strong transmission network are:

- to harness flows of variable renewable power from different regions to make sure the system is reliable
- to cope with outages or shortfalls in supply. If a cloud band cuts solar farm output in one state, the grid can draw on solar from another state.
- boosting regional economies with advanced manufacturing and production of emerging green products and technologies.

So while 10,000 km sounds like a lot, it's been kept to the minimum.

We could trade new transmission lines for a less reliable supply

At present, electricity is considered an essential service under national electricity laws. That means here has to be enough power 99.998% of the time. To meet that threshold, outages have to be kept to ten minutes in a year.

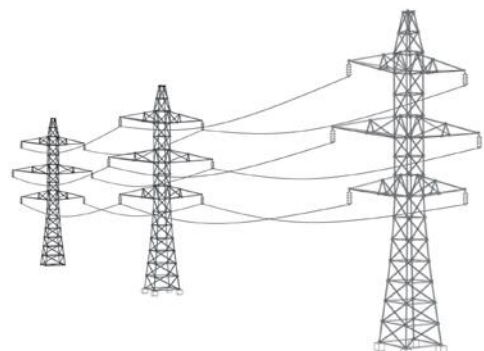
Making electricity an essential service is a choice. We could choose differently. If we decided electricity should be a regular service, where 99% reliability is OK (translating to outages of up to 87 hours a year), we would be able to get away with fewer new transmission lines.

That's because wealthier households would likely respond to more outages by investing more in big solar arrays and batteries. Some would become energy self-sufficient and cut ties with the grid.

In this scenario, self-generation by the rich would mean a reduced demand on the grid, and we might be able to get away with building fewer new transmission lines.

But we should be careful here. If we took this approach, we would reshape society. The rich would be insulated while poorer households deal with the pain of power outages. The idea of the grid as a public good would begin to disappear.

Edit from an article in The Conversation: <https://theconversation.com/is-there-an-alternative-to-10-000-kilometres-of-new-transmission-lines-yes-but-you-may-not-like-it-22396>



Winchelsea Churches



St John's Catholic Church

Father Joseph Panackal
0404598558

Harding St, Winchelsea 3241
MASS TIMES

6pm Sat. FEB. 17, 24
6pm Sat. MAR 2, 9, 16, 23, 30

St Thomas' Anglican Church

Rev'd Phil Jacobson
0477 672 042

stthomaswac@gmail.com
Barwon Tce, Winchelsea
Service 10am

Winchelsea Uniting Church

0475 777 301
uca.winchelsea@gmail.com
Hesse St, Winchelsea 3241
Services 9.30am Sundays

Thought for the Week

"Remember me, God?
I come every day just to talk with
you, Lord,
and to learn how to pray.
You make me feel welcome.
You reach out your hand.
I need never to explain
for you to understand.
Have a blessed week."

John Bader,
Former U/C Accredited
Lay Preacher



General Meeting

Wednesday March 13th, 2024. 7.30pm
Anglican Hall, Barwon Terrace, Winchelsea

Guest speaker - Jamie Comley

'The Impact of Stormwater Runoff on River Health
and Ecology'

The Barwon river is an outstanding feature and attraction of Winchelsea. The township is experiencing a major growth phase with several new developments generating significant increase in stormwater runoff to the river.

Jamie works in the area of stormwater management and will be speaking about how best to manage stormwater to the advantage of a greener and cooler townscape and reduced damage to riverine ecosystems.

All interested people welcome.

DEATH NOTICE

VERITY Robert

28.08.1942 - 14.01.2024
PASSED AWAY AGED 81

Dearly loved husband of Helen (Spike) (dec.).
Loving father of Debra, Graham, Dean & Samantha.
Father-in-law to Sharryn. Cherished grandfather to Ayden,
Sharni, Corey, Ashlee, Sara & Joshua. Great grandfather to Lance,
Hallie, Luke, Leo, Percy, Flynn, Maya & Coen. Greatly missed.

Memorial Service to be held at
Winchelsea House Community Centre, Winchelsea
at 3pm on Friday 8th March.



WINCHELSEA KYOKUSHIN KARATE

KICK START CLASSES



for Kids ages 4 to 8 years of age

When: 5.30pm to 6.15pm

Thursdays (school terms)



Where: Winchelsea Primary
School (LTC) 15 Gosney St

First 2
Classes
FREE!

Contact: SEMPAI Michael Winn Ph: 0428 220 626

Email: winchelseakyokushin@outlook.com

Winchelsea Kyokushin Karate



Kyeema
Rural Fencing Pty. Ltd.
Jason Armstrong & Jay Hawker
1080 Prices Lane, Ombersley, Victoria, 3241
0419 565085 (Jason)
0416 585817 (Jay)
kyeemafam@kyeemafam.com.au
Also incorporating domestic and rural tree trimming services.



5234 6585 0417 385 984
For all your septic tank, grease traps
and interceptor pits servicing.
Locally owned and operated

CONCRETER

Alister Aitken

No job to big or small

- Driveways - Carports - Crossovers - Footpaths -
- Sheds Slabs - Colored Concrete - Concrete sealing - Exposed Aggregate - & more -

Call or text for a no obligation free quote

Servicing our local Winchelsea & Surrounding Areas

alaitken.aa@gmail.com or Alister - 0411 871 950

A.B.N 47 228 574 460




Dance
ENROLMENTS
NOW OPEN!
Winchelsea
Dance Classes
REGISTER NOW

JAZZ - THEATRICAL TAP - HIP-HOP
CLASSICAL BALLET - CONTEMPORARY
Pre-School - Adults
Beginner - Advanced Levels

www.melsdancecentral.com.au



mainly music
est. 1990

Fun, Interactive music sessions for
pre-school children (0-4 y.o.) and
parents/caregivers

When: Mondays from 10 to 11 am
(runs during school terms)

Where: St Thomas' Hall
25 Barwon Tce.

To Enquire ring: 0407838256

Community buses for hire

If your community group would like to organise transport to your next activity or event, why not enquire about one of our community buses available for hire?



The service caters for Surf Coast Shire residents, community groups and not-for-profit organisations ranging from sports clubs, church groups, seniors groups and community based health services.

Four community buses come equipped with auto transmission and can transport 12 passengers, including the driver. The Bendigo Bank Community Bus at Winchelsea can transport up to 28 people, including the driver.

Buses will be supplied in a clean, roadworthy condition with a full tank of fuel and are required to be returned the same way.

For information on how to hire buses including fees and charges, please visit our website

surfcoast.vic.gov.au/communitybus

Barwon River
Winchelsea



WCC PRESENTATION NIGHT

Date: Saturday 9th March

Time: 7pm

Venue: Eastern Reserve

Dinner, Vote Count & Presentations



Chatty Café

by Judy Cameron

**Every Friday morning
10:30 to 12:30ish
in the Shire Hall**

Enjoy a cuppa and a chat with fellow villagers. for some gossip, memory-sharing and possibly solving the problems of the world!

I was there last Friday listening in and took notes of the chats.

Here are some –

“You know my Dad was one of six men who decided the town needed a swimming pool and they just got on and did it.”

“They had volunteers to mind things when the pool was open. My Dad was on one day and one of the kids came up and said thanks. Dad asked ‘What for?’ ‘Well they don’t normally let us do bombs!’ “

“We had a fundraiser to pay for a diving board – by being sponsored to do laps of the pool. I did 104. People were yelling at me to get out as the water was too cold!”

“Kids I went to school with couldn’t wait to get out of the town but now a lot of them are coming back. And some to raise their kids here, in the country.”

“Sadly it is not our little town anymore with the new developments. Some of the new people don’t even talk to us.”

“Everyone knew each other back then – which was a good and bad! Everyone used to watch out for other people’s kids.”

“The school used to go to Form 4 (Year 10). Now they’re talking about building a new High School here.”

“There used to be a stage here in the Shire Hall where the Repertory Society put on their acts.”

“I saw a sign in a shop window one day that a bus would go up to Melbourne to see Skyhooks. I was so excited I rushed home to ask Mum if I could go. “Did you get a phone number?” she asked. “No I forgot” I said. “Well it is our phone number on there so of course you will be going!”

“We used to ride our bikes everywhere. We sometimes went up to the cemetery. There is a big family vault there. After lots of rain there would slide the slab open and you could go down inside. I decided to be brave one day and do it and a bloody black cat came flying up the steps and frightened me so much I nearly beat it to the top! Last time I did that.”

“The fire siren used to be an air raid siren. There was no missing it, you could hear it all over town.”

“I miss the church bells. The drunks used to set them off on a Friday night.”

**Have you heard
about Chatty Cafe?**

Plain old-fashioned friendly, relaxed conversation. A host to welcome you, no obligation to buy or sign up, come for 5 minutes or 2 hours.

WE'D LOVE TO SEE YOU!

Join us every Friday morning
at Winchelsea Community House.
Keeping communities connected.



WINCH HOUSE





Winchelsea Community House and Shire Hall

Hours: Monday-Friday 9.00am -2.00pm

Address: 28 Hesse Street, Winchelsea

Phone: 52672028

www.winchhouse.org.au

Email: reception@winchhouse.org.au

Singing Group

Wednesday afternoons 4.45pm-6pm

Next session: Wednesday 6 Mar

Cost \$7.50 per session, under 16 free

Bookings welcome

Sound Healing

When: Wednesday 13th Mar

\$40 per session.

Bookings now open., please call Vicki on 0400 149 749

Be Connected

Every Australian online.

Be Connected (Free Digital Skills program)

Friday mornings 11.30am

Free to attend but please book in beforehand.

Introduction to Fermenting

In this session you will learn make two ferments (sauerkraut and kvass) to take home as well as learning about their benefits and uses.

Small group (Max 4 participants only).

All ingredients supplied.

Date: Saturday 16th March, 2024

12noon-2pm

Cost: \$55 per person

BYO: 1-2 clean teatowels, Apron, 2-3

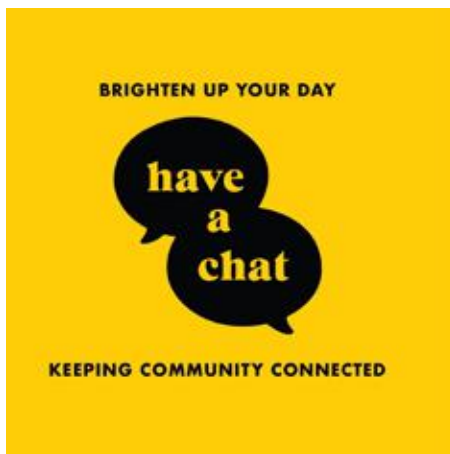
Large Jars, wide-mouthed bottles eg passatta bottles (2-3), pestle if you have one, notebook and pen

Photographic Exhibition

Viewing Times;

Wednesday 6th Mar 9am-2pm

Thursday 7th Mar 9am-2pm



Chatty Cafe

Friday mornings 10.30am-12 noon (during school terms)

Next Session: Friday 9th Mar

No bookings required. - volunteers present to welcome you.

Knitting Group

When: Thursday mornings 10.30-12 noon (during school terms)

Next Session: Thursday 7th Mar

Come along and learn to knit or bring your knitting project and come and chat with others.

Tai Chi - Experienced

When: Friday mornings 9.30-10.30am (during school terms)

\$10 per session

Next Session Friday 9th Mar

Crochet Group

When: Alternate Saturday afternoons 1.30pm, Winchelsea Community House Space

\$5 per session

Next Session Saturday 9th Mar

Tai Chi - Beginners

When: Friday mornings 9.00am (during school terms)

\$10 per session

Next Session: Friday 9th Mar

Gentle Movement Classes

When: Mondays 1pm

Cost \$5 per session

Next Session: Monday 18th Mar

Please register your interest.



Community Houses such as ours provide programs and activities to learn new skills, brush up on your existing skills and more than anything to connect with others in your community and reduce social isolation. New skills may help you with employment and build your confidence to in turn help others. Activities such as singing and sound healing help your mind and reduce any unwanted stresses. Have a think about doing something for yourself and join in our activities.

direct
TEMPORARY FENCING

FOR HIRE - SUPPLIED & ERECTED - 7 DAYS
GEELONG - BELLARINE - COLAC - SURF COAST
PHONE CAM 0417 310 800

DownRyte Excavations

- Excavations
- Drilling and Piling
- Rock Placement
- Tree and Stump Removal

Sean Hunwick
Mobile: 0409 447 288
Email: downryte@activ8.net.au

NO MATTER WHAT YOUR PROBLEM, DODDS ELECTRIX CAN DEFUSE THE SITUATION.

RURAL, INDUSTRIAL, COMMERCIAL DOMESTIC
PHONE 0438 887 360
EMAIL: DODDSY@FASTMAIL.FM
PO BOX 36 BIRREGURRA, VICTORIA 324
REC: 17520 ABN: 64 581 250 880

WINCHELSEA CONCRETING

• Driveways • Sheds • Decorative Concrete • Raft Slabs

Robert Murphy
☎ 0438 235 237
✉ winchelseaconcreting@outlook.com

Knuckey's Winchelsea
Ph: 5267 2011

Knuckey's have in stock a complete range of batteries to suit tractor, heavy machinery, cars, utes

The largest range of the best oil for your vehicles—**CASTROL**—*'when only the best will do'*

The largest range of V belts.
A, B, C, D M Sections
Bolts and nuts for all occasions
Steel cut to size

Scott McDonald
0423 413 829

S.J.R AUTOMOTIVE
ABN 642 493 848 99
12 ALSOP DRIVE, WINCHELSEA VIC 3941

DAVIC AG
CONTRACTING AND EARTHMOVING

For all your harvesting needs
Mowing, raking, round bailing, paddock prepping, spreading and sowing

Call Dave on **0417 579 973** Bambra

OZ TREES NURSERY & TREE PLANTING SERVICES

- Affordable seedlings—over 200 species
- Complete plantation service—farm forestry, shelter, aesthetics
- Deep ripping & mound ploughing. Rotary bed forming
- Our experienced staff will help you select species for your site conditions and needs

Also available—tree planting tools, milk cartons, plastic tree guards & bamboo stakes

569 Warrowie Rd. Colac
P: 5233 6280 F: 5233 6393
E: info@oztrees.com.au
W: www.oztrees.com.au
Open Monday—Friday
9am—4:30pm

Phone OzTrees for professional advice,

WINCH WEBSITES
WEB SOLUTIONS SIMPLIFIED.

WEBSITES

GROW business INCREASE reach SAVE time

Find out what a website could do for you
winchwebsites.com.au
04 887766 20

STS ACCOUNTING GROUP

Your Taxation & Superannuation Specialists.

Winchelsea
5267 2673
www.surftax.com.au

SERVICES AND ACTIVITIES IN WINCHELSEA

VLINE TRAIN SERVICES

TO MELBOURNE:

Mon - Fri 6:41 am, 7:57am, 11:14am, 2:08pm, 7:23pm
Sat - Sun 9:26am, 1:30pm, 7:18pm

TO WARRNAMBOOL:

Mon - Fri 8:56am, 11:55am, 2:50pm, 5:27pm,
6:45pm, 8:50pm
Sat - Sun 8:47am, 2:46pm, 8:34pm



COUNTRY WOMEN'S ASSOCIATION

7pm second Wednesday of month
Winchelsea Senior Citizens' Hall



WINCHELSEA SES

Every Wednesday
Visitors and inquiries welcome
0408 102 802



WINCHELSEA AND DISTRICT COMBINED PROBUS CLUB

Meets 1st Monday of the month at 10am.
Senior Citizens Rooms,
Harding St, Winchelsea.
New members always welcome.
Enquiries Linda 0439 817 263.

WINCHELSEA TRANSFER STATION

55 Cressy Road, Winchelsea

Monday	Closed	Tuesday	2pm-4pm
Wednesday	Closed	Thursday	2pm-4pm
Friday	Closed	Saturday	1.30-3.30pm
Sunday	9.30-12.30pm		

All waste disposal sites are closed on Christmas Day,
but open on other public holidays that fall
during their normal operating hours.

www.surfcoast.vic.gov.au/disposalsites



WINCHELSEA GIRL GUIDES

Our Unit meets at the Catholic Church Hall,
Harding St Winchelsea each Monday 4.30pm-6pm
All girls 5yrs- 15yrs Welcome!
Contact Yvonne Orchard 0448 672 630
or Bonnie Stokes 0401 386 274



1st Modda & 1st Winchelsea SCOUT GROUP

Joey's: Tuesdays of school term 5-6pm
Cubs: Mondays of school term 6:30-8pm
Scouts: Tuesdays of school term 6:30-8:30pm
All at Modewarre Hall, Cape Otway Rd
Venturers: Wed at Walton's Rd Venturer Den
Contact Marie McPadden 0409 330147

BUS TO



THE HUB

For reservations on the weekly bus
to the Eastern Reserve Hub,
please phone 52671202.

SURF COAST MOBILE LIBRARY

Hesse St, Fridays, 2pm-5pm
Surf Coast Mobile Library
parked in Hesse Street (outside Shire Hall)
Fridays between 2:00 and 5:00pm
unless it is a Public Holiday.

WINCHELSEA TAXI

0429 672 888 or 5267 2888

Wheelchair accessible
10 seater bus available.

WINCHELSEA PLAYGROUP

Every second Thursday 10am-12pm
St Thomas Anglican Church Hall
cnr Barwon Tce and Hopkins St, Winchelsea
Contact: Danni Menzies 0432019944
winchelseaplaygroup@gmail.com
Facebook - Winchelsea Playgroup 2019
New families welcome



Café La Hoot

have you tried
'owl' coffee?

1 willis st. cafe@hoot@gmail.com 0407 528 999

TRENCHES & HOLES PTY LTD.



PHILLIP ROBERTSON

☎ 0427 672 945

WINCHELSEA

- General Earth Works
- Driveways
- Trencher
- Kanga Loader
- Grader
- Excavator Work (3.5 & 6.5 Tonne)
- Tip Truck
- Rock Breaker
- Post Holes & Shed Footings

A.B.N 74006896898

WAZZA'S
WATER CARTAGE

Stainless Tanker Up to 22,000 ltr loads
Barwon Water Registered

Domestic & Rural Water Supplies

Call Wazza
Mob: 0428 877 260
Email: wazza@wazzas.com.au Web: wazzaswater.com

M & L DRAYTON PLUMBING SERVICES

REG No 24356 C/A No C02594

- Domestic and Rural Plumbing
- Roofing
- Sewerage & Septic
- LPG & Natural Gas Connections
- Motorised Drain Cleaning
- Backhoe Hire

Phone Mark 5288 7244
PO BOX 98 WINCHELSEA 3241
Mobile 0428 520 142



- DECKS - SAUNAS
 - FLOORING - PERGOLAS
 - WEATHERBOARDS
 - HORSE SHEDS
 - CLADDING - FENCES
- ALL THINGS TIMBER AND MORE...

INSTAGRAM guim_designs

CALL PAT ON

0401 232 674



26TH ANNUAL
DEANS MARSH
FESTIVAL

SUNDAY 17 MARCH 2024

DEANS MARSH MEMORIAL RESERVE

PENNYROYAL VALLEY ROAD

10AM - 4PM

GROWERS & MAKERS MARKET | FOOD & BAR
ART EXHIBITION | HIWIRE SHOWS
GIANT SLIDE | FACE PAINTING | DOG JUMP
BIRD CALLING COMP | DEANS MARSH GIFT & MORE

LIVE MUSIC ALL DAY INCLUDING
TONY & EVAN, LIGHTS OUT WEST, BLUE WINDOW & CIAO BELLA

LEARN MORE AT
DEANSMARSH.ORG.AU



DEANS MARSH
COMMUNITY COTTAGE



GREAT OCEAN ROAD
HEALTH



**SURF
COAST
EVENTS**



WINCHELSEA FACEBOOK

Non-profit community Groups and Pages

What's on in Winchelsea	facebook.com/WhatsoninWinchelsea
Winchelsea FREE	facebook.com/groups/winchelseafree
Winchelsea Community Information	facebook.com/groups/207538644446972
Winchelsea Classifieds 3241	facebook.com/groups/216942861684082
Winchelsea Lost and Found	facebook.com/groups/768187693217518
Winchelsea Op Shop	facebook.com/HospitalAuxiliaryOpShopWinchelsea
Winchelsea Shire Hall	facebook.com/WinchelseaShireHall
Winchelsea Community House	facebook.com/winchelseacommunityhouse
Winchelsea Coronavirus Community Support Group	facebook.com/groups/2676957719207927/
The Green Winchelsea Residents	facebook.com/groups/515322772623126
Growing Winchelsea Inc	facebook.com/growingwinch
Winchelsea Star	facebook.com/TheWinchelseaStar
Winchelsea Movie Club	facebook.com/winchelseamovies
Winchelsea Community Market	facebook.com/100083362387611
Winchelsea Land and River Care Group	facebook.com/envirowinchelsea/
Upper Barwon Landcare Network	facebook.com/UpperBarwonLandcare
Winchelsea & District Historical Society Inc	facebook.com/Winchelseaanddistricthistoricalsociety/
Winchelsea Wildlife Shelter	www.winchelseawildlifeshelter.com/
SCARS - Surf Coast Animal Rescue Service	facebook.com/groups/415211698950674
Winchelsea Gardeners	facebook.com/groups/779878518703025
Winchelsea & District Historical Society	facebook.com/Winchelseaanddistricthistoricalsociety/
Winchelsea Repertory Society Inc	facebook.com/winchrep/
Winchelsea Globe Theatre	facebook.com/Winchelsea-Globe Theatre-164790897641678
Winchelsea Uniting Church	facebook.com/winchelseaunitingchurch
St Thomas' Anglican Church	facebook.com/StThomasWinchelsea
St John the Baptist Catholic Church	facebook.com/pages/Winchelsea-Catholic-Church/101775670163180
Winchelsea Mainly Music	facebook.com/groups/668500343953191/
Winchelsea Health Club	facebook.com/WinchelseaHealthClub
Winchelsea Playgroup	facebook.com/groups/551663435367031
School terms only. Contact Danni 0432 019 944	
Winchelsea Girl Guides	www.guidesvic.org.au/
Winchelsea/Modewarre Scouts	facebook.com/1stModewarreScouts
Winchelsea Fire Brigade	facebook.com/winchelseafirebrigade/
Winchelsea SES	facebook.com/groups/WinchSES
Country Women's Association - CWA Winchelsea	facebook.com/pg/CWAWinchelsea/
Winchelsea Bowls Club	facebook.com/Winchelsea-Bowls-Club-533783333344345/
Winchelsea Blues Cricket Club	facebook.com/groups/8999049476/
Winchelsea Blues FC	facebook.com/WinchelseaFNC/
WYLD Winchelsea Youth Leisure and Drop in	facebook.com/groups/569737570027065/
Lions Club of Winchelsea	facebook.com/LionsWinchelsea
Winchelsea Probus	facebook.com/893535194971083
Winchelsea Golf Club	facebook.com/winchelseagc/ facebook.com/groups/1324943804676697

Council Updates Advocacy Priorities Including Renewed Focus On Housing Affordability

The Surf Coast Shire Council updated its advocacy priorities at Tuesday night's Council meeting, including a renewed focus on the challenges surrounding housing affordability and availability.

In addition to listing a series of individual projects or which it will seek funding support, Council has identified five themes which will guide its advocacy actions. They are:

- Housing affordability and key worker accommodation
- Climate resilience
- Prosperity and creativity
- Environment and sustainability
- Stronger communities and places

Council also resolved to move motions at the Australian Local Government Association (ALGA) National General assembly in July, and the Municipal Association Victoria (MAV) State Council meeting in May.

"The Council will seek sector support at the MAV State Council meeting for a change to the Victorian Government's Second Dwelling provisions," Cr Gary Allen said.

"Whilst the Second Dwelling provisions could be a helpful source of additional affordable housing, we will be seeking an adjustment to ensure such dwellings can only be used for long-term occupancy and not short-stay rental, in areas where there is a shortage of key worker and affordable accommodation."

Cr Allen said Council's motion at the ALGA National General assembly, would call for the Australian government to introduce mandatory product stewardship and extended producer responsibility for problematic materials and packaging.

"This includes PFAS, soft plastics and textiles. We will also ask to align

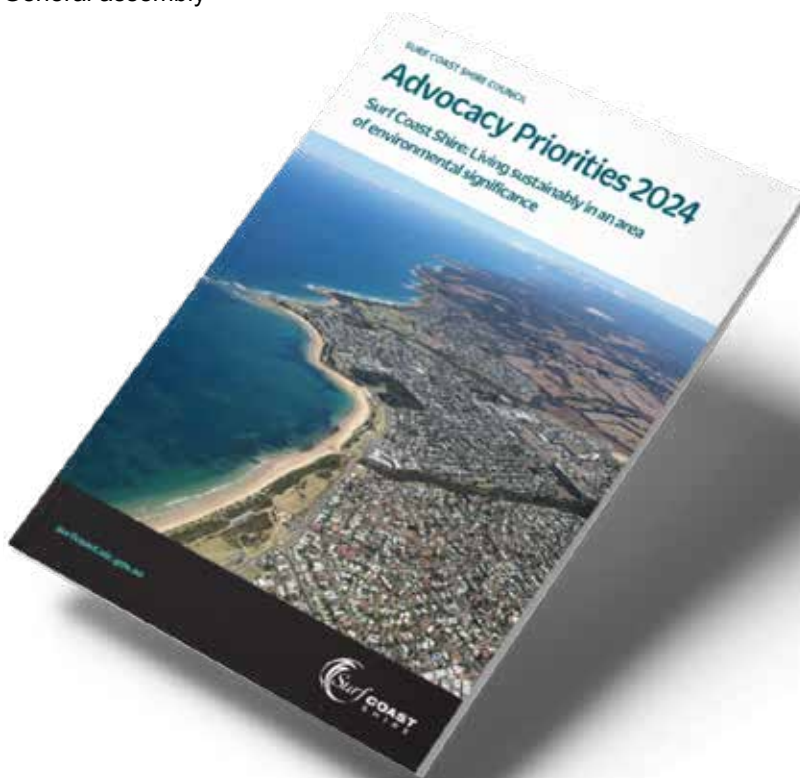
Australian product regulations, policies and standards to global best practice," Cr Allen said.

"This aligns with the Council's plan to divert more material from waste stream. Currently in Australia there is no effective market for recycling soft plastics, meaning the majority ends up in landfill, or worse, is littered into the environment.

"For several years Surf Coast Shire Council has been an active participant at ALGA and MAV meetings and has tabled motions which have been supported in both forums."

Cr Allen said the updated advocacy priorities enable Council to undertake advocacy that is aligned to its strategic goals and the needs of the community.

"It will inform decisions on which projects would be subject to grant applications and which topics to raise in advocacy forum."





Welcome to Blues News

A busy weekend for the Winchelsea Blues, with a practice match against Newcomb at the Deakin Sporting Complex on Sunday morning as well as Committee members manning a stall at the Winchelsea Market from 9am until 1pm.

Big thanks to everyone who took the opportunity to purchase their Social Membership cards, bought raffle tickets, purchased some of the small amount of merchandise we had available or just called in to say "Giddy"

As in line with most other sporting clubs all our apparel and merchandise can be purchased on line, the Winchelsea Football & Netball Club's link is winchelseafnc.sportsclique.com.au/shop/



Winchelsea football netball club enjoyed signing up new members and providing information to the community ahead of the 2024 season, which kicks off on the 6th of April, with the first blues bistro on the 4th at the rec reserve.

NETBALL:

Last Thursday evening there was a huge turnout to watch the practice matches between Torquay and Winchelsea. Such a crowd to witness a truly high standard session.

FINALS:

Good Luck to the teams competing in Finals this week from the Winchelsea Bowls Club!

JUNIOR FOOTBALL:

This Thursday there is a Junior Boys and Girls come and try at 5pm – Eastern Reserve .

BBQ provided at 6pm don't forget there is FREE MEMBERSHIP for our Junior Blues.

GO BLUES!!

JUNIOR FOOTBALL SEASON 2024



FREE SEASON MEMBERSHIP!

Enquiries:

Daniel: 0421377492

Janet: 0400783408

Byron: 0401170854

U/9s u/10s u/12s

Boys and Girls come and try 5pm

Thursday 7th March @ Eastern Reserve.

BBQ provided at 6pm.



R.A.K. DAVIS & SONS

CARTAGE CONTRACTORS

WINCHELSEA

SUPPLIER OF ALL QUARRY MATERIALS, TRUCK HIRE

CARTAGE OF GRAIN, LIME, GYPSUM & SUPER

LANDSCAPE & GARDEN SUPPLIES

56 WILLIS ST, WINCHELSEA

Ph – 5267 2094

Ryan – 0438 672 281

Email: rakdavis@bigpond.com



- ✘ LOG BOOK SERVICE
- ✘ AUTO ELECTRICAL
- ✘ TOWING
- ✘ AIR CONDITIONING
- ✘ CLUTCH & BRAKES
- ✘ TYRES
- ✘ WHEEL ALIGNMENT
- ✘ BATTERIES

CAR, TRUCK REPAIRS & Roadworthys

PH: 5267 3001

Mob: 0417 137 457

17 Alsop Drive

GREAT Bundle Deal on Bosch Hot Water... FROM ELGAS
 Buy any Bosch Bluetooth continuous flow hot water model - 16Litre, 20Litre or 26Litre and Receive \$100* in Elgas bonus LPG gas credits



*For more details: www.elgas.com.au/appliances/bosch-aptiflow-16-20-26-lpg-bundle-sale

AND... for new customers, an additional \$80 WORTH OF LPG GAS CREDITS** when you open a new LPG Gas account with Elgas



**Further details can be viewed at www.elgas.com.au

Ask about the Elgas Easy Payment Plan - 12 months interest free*** on selected LPG appliances

***Further details can be viewed at: www.elgas.com.au/epp

Automatic tanker gas bottle refill OR gas bottle exchange refill is available for home or business...

Call today or visit our website for our many customer benefits and latest offers

131 161
www.elgas.com.au

ELGAS



SIMPLE STORAGE SOLUTIONS

- Personal & Business Storage
- Boat, Caravan & Vehicle Storage
- High Security Premises
- Individually Alarmed Units
- Electric Gate Access
- 7 Day Access & CCTV

YOUR STORAGE PROBLEMS SOLVED

5267 3116

6 ALSOP DRIVE, WINCHELSEA 3241

HESSE RURAL HEALTH



Volunteers Required

Volunteers are one of Hesse's greatest assets, playing a vital role to enhance the quality of Hesse services & client experiences.

- Bus Driver
- Outings Assistant
- Resident Visitor
- Events & Activities Assistant
- Group Wheelchair Walkers
- Appointment Escort
- Social Support Activities
- Gardening - Winchelsea
- Hospital Auxiliary Member
- Consumer Advisory Committee
- Marketing & Fundraising Committee

For more information please contact Hesse on (03) 5267 1200 or via email reception@hesse.vic.gov.au

Wightons Lawyers

- Dispute Resolution & Litigation
- Debt Collection
- Property Law
- Wills & Estates
- Powers of Attorney
- Business Law
- Family Law

By appointment only

22 Willis Street, Winchelsea
ph. 5221 8777

www.wightons.com.au



Charles Stewart & Company are leading livestock and real estate service providers covering Victoria's south west

LIVESTOCK
 Jamie McConachy | 0418 522879
 Peter McConachy | 0408 522878
 Matt Nelson | 0428 315400
 Gerard Bohan | 0400 005541
 Lachie Barclay | 0438 346291
 John Thornton | 0408 526367
 Dougal McIntyre | 0439 575612
 Ross Spitty | 0419 539717

REAL ESTATE
 Michael Stewart | 0418 520467
 Daryl Osborne | 0419 388341
 Anthony McDonald | 0418 593597
 Gerard Bohan | 0400 005541
 Stephen Lugg | 0417 556098
 Josh Lamanna | 0417 586032



Office
56 Bromfield Street, Colac
www.charlesstewart.com.au

Green Lead Electrical
Connecting you to a greener future
REC 23611
0467 097 101



Servicing Geelong & the Surf Coast

Specialising in all residential electrical work including:

- Switch board & lighting upgrades
- Outdoor lighting
- Electrical safety checks
- Energy efficient LED lighting
- Ceiling sweep fans & ventilation
- Energy saving advice

Phone Martin Wilkinson:

0467 097 101

greenlead@outlook.com

1132268-CG18-14



Water Supply Specialists

WATER SOLUTIONS

74 Dennis Street, Colac
5231 1861



ALL THINGS WATER:

- PUMPS - PIPES
- FITTINGS - TANKS
- POOL CHEMICALS
- IRRIGATION
- WATER PURIFICATION
- SOLAR - REPAIR

WINCHELSEA LIONS CLUB

PAPER RECYCLING

Paper depot rear of Senior Citizens Rooms
Harding Street
NEWSPAPERS,
MAGAZINES,
PHONE BOOKS WANTED



RAISING FUNDS FOR
OUR TOWN & DISTRICT
5267 2011 or 0408 520 606

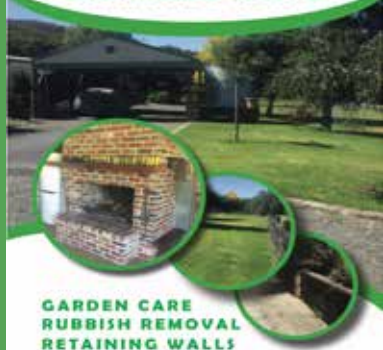
M&B WOOD PLUMBING

Call Matt - 0418 319 357
mbwoodplumbing.au

Servicing Winchelsea & surrounds

- General maintenance & blocked drains
- Gas fitting & hot water service upgrades
- New homes & renovations

CUT PRICE LAWNMOWING



GARDEN CARE
RUBBISH REMOVAL
RETAINING WALLS

All types of Brickwork, outdoor fireplaces and paving.

CALL BRIAN FOR A FREE QUOTE

0458 568 743

briandlee60@gmail.com



- Fabulous
- Pizzas
 - Pastas
 - Souvlakis
 - Burgers
 - Desserts

Thurs & Sun
3-8pm
Fri & Sat
3-9pm

21 Main St
Winchelsea
5292 2120

Sandy's





Located at 36 Main Street, Winchelsea 3241

For any enquires or bookings please contact the clinic on 5292 8028.
Or visit our website: www.winchmc.com.au

Opening Hours:

Monday - Friday 8:00am - 5.00pm
(Monday Evening Clinics available and selected Saturdays)



Our clinic accepts online bookings via the app called HotDoc.
Download the app on the App Store or Google Play or head to our website.

NATURAL GAS CONNECTIONS

**M. & L DRAYTON
PLUMBING SERVICES**

YOUR LOCAL LICENSED

- PLUMBERS (24356)
- GAS FITTERS
- GAS CONVERTERS
- CARBON MONOXIDE TESTING

MARK 0428 520 142

Commercial | Industrial | Domestic

HAMILTONS

Truck & Bobcat Hire
Give Aaron a Call
0438 438 623



Winchelsea and District

Ebony knows banking

If you need help with yours, you need to meet Ebony.

Ebony shares her knowledge of banking so you can achieve what you want from life.

And, she can meet you when and where it suits you; at the branch, over the phone, or via video call.

If you need help with your banking, call Ebony Berg, Loan Specialist on 5267 3189 or search Bendigo Bank Winchelsea.

bendigobank.com.au



Bendigo and Adelaide Bank Limited ABN 11 068 049 178, AFSL/Australian Credit Licence 237879. A1415950 OUT_33710515

Winchelsea Men's Shed



For The Community

51 Hesse Street

Every Wednesday from 9:30am

New members always welcome

**For more detail contact:
Ray Atkinson (Co-ordinator)
0407 839 139**

or

winchmensed@gmail.com

**Need a job done?
Woodworking jobs,
furniture repairs, small jobs.
Drop in and talk to us.**



Pixie Wash
Mobile Doggie Care
Dogs up to 20kg
Pixie Heath
0417 586 080



Council to seek community feedback on draft Circular Economy Action Plan

Surf Coast Shire Council will seek community feedback on a draft Circular Economy Action Plan, which aims to drive action within Council operations and the community to avoid waste, increase resource recovery and regenerate nature.

In contrast to a linear economy, which is based on a take-make-use-dispose approach, a circular economy keeps valuable resources in use for as long as possible through reusing, repairing, sharing and recycling – avoiding waste and helping protect the environment.

Council resolved at its February meeting to endorse the draft action plan for public exhibition and an eight-week community engagement period across March and April.

The three-year plan includes a range of actions and targets, with five priority areas:

- Avoiding waste and increasing resource recovery
- Maximising reuse
- Innovation and collaboration
- Creating systems change, and
- Advocacy

Within the priority areas, the plan outlines 25 actions, including:

- Development and delivery of targeted community education and behaviour change programs to drive waste avoidance, increased resource recovery, and smarter consumption including buying recycled and sharing.
- Council opting for use of products and materials with recycled content for projects, asset renewal and maintenance, with priorities including steel, bitumen, concrete, timber and bollards.
- Development of a plan for Anglesea landfill following its expected closure in 2027.

Community targets include reducing waste to landfill per household, increased resource recovery and reducing food and garden waste in landfill.

“A circular economy will help us manage materials responsibly, where possible reusing rather than simply consuming, while still enabling sustainable economic growth,” Cr Mike Bodsworth said.

“Everyone has a role to play, from the broader community through to industry, businesses, research and education facilities, and all tiers of government.

“While there are already many examples of positive steps being taken in our community towards a circular economy, by developing this action plan we will enable greater focus and guidance on priority areas to work towards a low-waste future.

“There are lots of great circular economy initiatives already operating in our communities and a strong local interest in environmental leadership. I’m sure local circular economy champions will take a keen interest in the plan and its implementation, in collaboration with Council.

“This will in turn help reduce greenhouse gas emissions and protect our people, our place and our environment.”

Community members can learn more about the draft Circular Economy Action Plan and provide feedback via online and in-person engagement sessions during a two-month engagement period starting 1 March.

People will be able to find a copy of the draft action plan, engagement details and provide feedback via www.yoursay.surfcoast.vic.gov.au/circulareconomy

This action plan is supported by the Council Plan 2021-2025 and the Climate Emergency Response Plan 2021-2031, which clearly outline Council’s commitment to strong action to avoid and reduce waste, and reuse and recover resources.



HESSE RURAL HEALTH

Acute Care*
Urgent Care*
Residential Aged Care*
Community Nursing
Dietetics
Physiotherapy
Occupational Therapy

Diabetes Education
Social Support Groups
Counselling
Home Care
Health Promotion
* services from Winchelsea only

www.hesseruralhealth.com.au
P: (03) 5267 1200 E: reception@hesse.vic.gov.au

Funeral Planning
Working out what is best for you.
Prepaid Funerals, Funeral Bonds, Pay-by instalments...

There are many options and its important to make the right choice.

Alyson Burchell will be available by appointment to answer any questions about funerals and planning ahead.

For more information or to make an appointment contact Sue on 5221 4788

Tuckers Community Office,
Surf Coast Taxation Services, 22 Willis Street,
Winchelsea

**First Tuesday of the Month,
by appointment 10.00am - 12.00pm**

Caring for families since 1883

Tuckers
Funeral & Bereavement Service
...for a life worth celebrating

5221 4788
www.tuckers.com.au



IS YOUR DIGITAL TV FREEZING & PIXELATING?

*We have the latest Digital Technology to help
you achieve best possible reception!*

Hi-Gain Antennas P/L

1/21 Leather St, Breakwater

Ph: 5222 2711

Mon - Thur 7.30am - 4.30pm Fri 6.30am - 10.30am



Moriac Veterinary Clinic

0447 781 089

PHONE 24 HOURS

784 Hedy Main Road Moriac

info@moriacvet.com

www.moriacvetclinic.com.au

HOURS // Monday - Friday: 8am - 5pm



MGT BUILDING & CONSTRUCTION

NEW HOMES | EXTENSIONS | RENOVATIONS

Ph: 0409 433 687



Chiropractic - Remedial Massage - Myotherapy - Sound Healing - Breathwork

Chiropractic care for:

Stress & Anxiety
Body Aches & Tension
Poor Sleep

Pain Management
Family Wellbeing
Health Longevity

03 5267 2240 Shop 4/21 Hesse St Winchelsea



<https://onebodychiropractic.com.au/>





Lupton BUILDERS
SPECIALISING IN QUALITY




REGISTERED Building Practitioner

- NEW HOMES
- ALTERATIONS
- CARPORTS
- BATHROOMS
- EXTENSIONS
- DECKS
- VERANDAHS
- WINDOW REPLACEMENTS
- RENOVATIONS
- PERGOLAS
- RE-CLADS

LEIGH LUPTON
0438 840 104

CHRIS LUPTON
0407 681 514

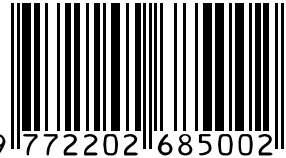
LEIGHLUPTON17@GMAIL.COM Est. 1977

Winchelsea Star

Since 1977



ISSN 2202-6851



9 772202 685002

HF RICHARDSON

PROPERTY

Servicing all your real estate needs
Ken McDonald **0418 524 150**



Residential | Rural Lifestyle | Agricultural Farms

PUBLIC ACCESS DEFIBRILLATORS IN WINCHELSEA

The Winchelsea Lions Club has compiled a list of public access defibrillators in Winchelsea. We are lucky to have more available in town, but these are specifically **publicly accessible 24 hours a day**. If anyone knows any others that have 24 hour public access, please let Linda Carter know on 0439 817 263.



Bendigo Bank
11 Main Street



Ambulance Victoria
33 Willis Street



Uniting Church
33 Hesse Street



Probus Club
(Senior Citizens)
36 Harding Street



Men's Shed
51 Hesse Street



Winchelsea Golf Club
13 Anderson Street



Hesse Rural Health
8 Gosney Street



Wurdale Memorial Hall
220 Wurdale Road

