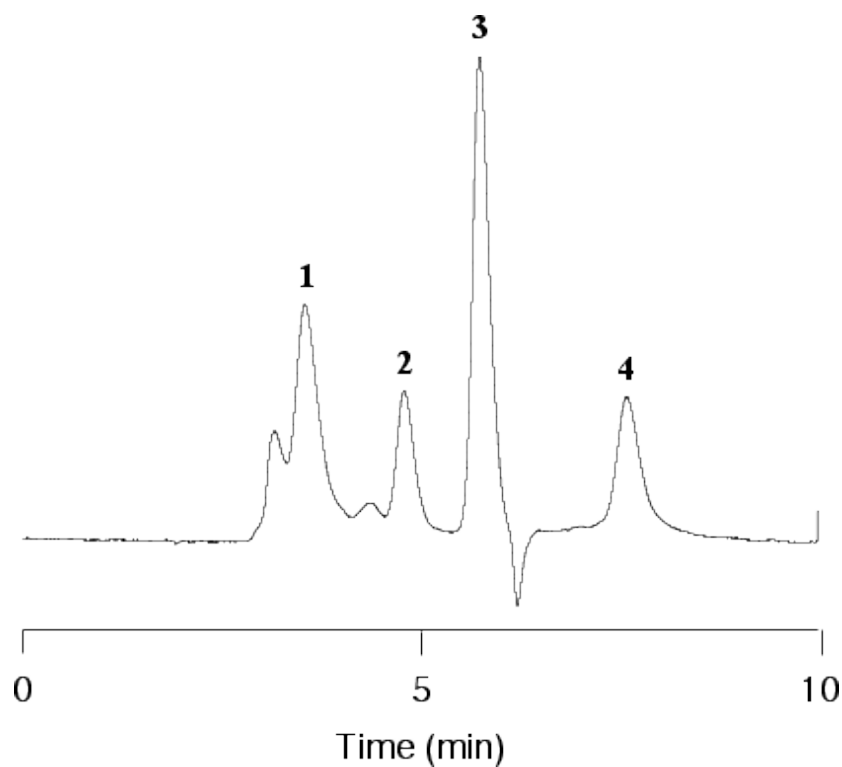


InertSearch™ for LC

Inertsil® Applications

Analysis of Protein (SEC mode)

Data No. LA590-0000



Column : Inertsil WP300 Diol
5 µm
250 x 4.6 mm I.D.

Column Cat. No. : 5020-05946

Eluent : 0.2 M NaH₂PO₄ (pH 6.9; Na₂HPO₄)

Flow rate : 0.5 mL/min.

Col. Temp. : 30°C

Detection : UV 280 nm

Injection Vol. :

Sample :

Solutes : 1. Thyroglobulin (Mw 660,000)
2. Bovine serum albumin (BSA, Mw 66,000)
3. Lysozyme (Mw 14,300)
4. Insulin chain B (Mw 3,500)