

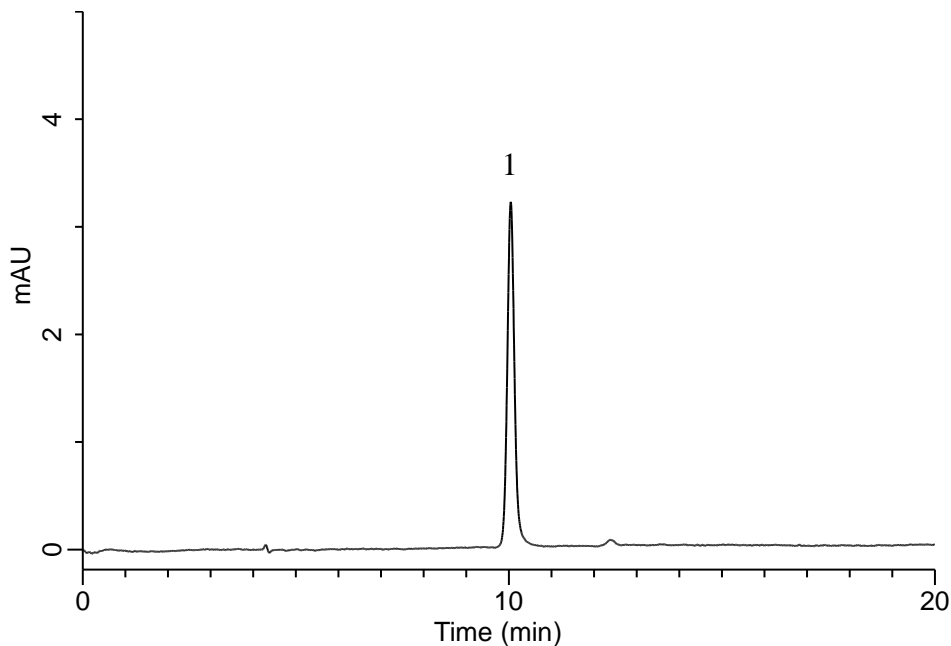
# InertSearch™ for LC

Inertsil® Applications

## Analysis of Acetic acid

(Under the Condition of food additive analysis method in food, Acetic acid glacial and Sodium acetate)

Data No. LB842-7111



### Conditions

**System** : Chromaster HPLC system (HITACHI)  
**Column** : InertSphere FA-1 (GL Sciences Inc.)  
(9  $\mu$  m, 300 x 7.8 mm I.D.)

**Column Cat. No.** : 5020-11003

**Eluent** : 3 mmol/L HClO<sub>4</sub> in H<sub>2</sub>O

**Flow Rate** : 1.0 mL/min

**Col. Temp.** : 40 °C

**Detection** : UV 220 nm

**Injection Vol.** : 10  $\mu$  L

**Sample** : Standard

### **Analyte:**

1. Acetic acid 200  $\mu$  g/mL