



NEXT GENERATION
NATURAL CLADDING
Made of **CONCRETE**

The Ultimate Lightweight Concrete Panel
Invented for Exterior Facades & Interior Walls & Ceilings



Kurd Stone Erbil

Kurd Stone Erbil

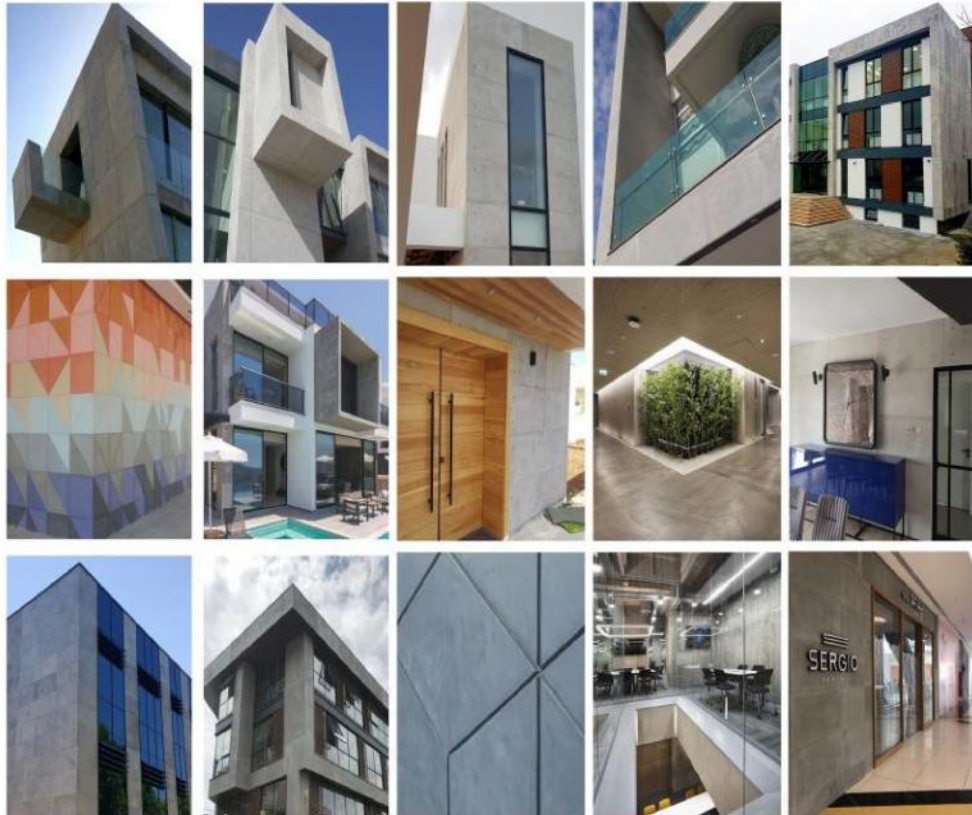


NEW KIND OF
**ARCHITECTURAL
CLADDING
EXPERIENCE**
MADE OF
CONCRETE



is invented & manufactured & patented & branded by **NETEREN LTD** - EST. 2005

www.neteren.com



Where High Performance & Design Matter,
Simply CRETOX it!

What is CRETOX ?

- **CRETOX®** is a brand that gave its name to a new kind of ultimate lightweight natural concrete panel tile for exterior and interior architectural cladding
- Brand New, Innovative , Patented, Award Winner Architectural Cladding Material in The World Design Industry - Launched as of March 2016
- Invented & Patented & Manufactured & Branded by **NETEREN Group** (Neteren Company Ltd) in TURKEY | Established in 2005
- Made of 100% pure portland cement, sand, quartz , aggregates and water based additives with Neteren's special formula
- Do not bear any toxic ingredients such as fiber glass , polyester resin, asbestos etc. Do not bear iron metal or glass fiber mesh.
- Easy to install cladding material for Exterior Facades, Interior Walls, Ceilings , Soffits
- Quality proven , high performance cladding material with more than 200.000 m2 references as the end of 2020
- 100% odorless and environment friendly due it's pure natural
- UV Resistant, waterproof , impact resistant, scratch resistant
- Through coloured by surface, self nano-protected, ready to use product
- Incombustible Fire Rated "A1" in raw, "A2-s1-d0" in nano protected version
- Suitable for humidity intense areas even for facades nearby sea & ocean
- Sole brand in the World Design Industry creating "Haute Couture" in concrete business in terms of sizes, colours, format and textures
- High quality material with 15 years Manufacturer **NETEREN's** Official Guarantee



Format | Thickness | Size

Panel Tile Format | Ready to Use Panel Board

Thickness in Serial Production

- 7-8 mm (Type A) with only 9-10 Kg/m2
- 11-12 mm (Type B) with only 15-16 Kg/m2

Dimensions in Serial Production

- 15 x 120 cm
- 60 x 120 cm
- 120 x 120 cm
- 240 x 120 cm



EXTERIOR FACADE CLADDING



SOFFIT COVERING



COLUMN COVERING

ONE UNIQUE MATERIAL VERSATILE DESIGN SOLUTIONS



WALL COVERING



CEILING CLADDING



DRY WALL PANNELLING

Serial Sizes of CRETOX Panels



15 x 120 cm

7-8 MM | 9-10 Kg/m²
11-12 MM | 15-16 Kg/m²



60 x 120 cm

7-8 MM | 9-10 Kg/m²
11-12 MM | 15-16 Kg/m²



120 x 120 cm

7-8 MM | 9-10 Kg/m²
11-12 MM | 15-16 Kg/m²

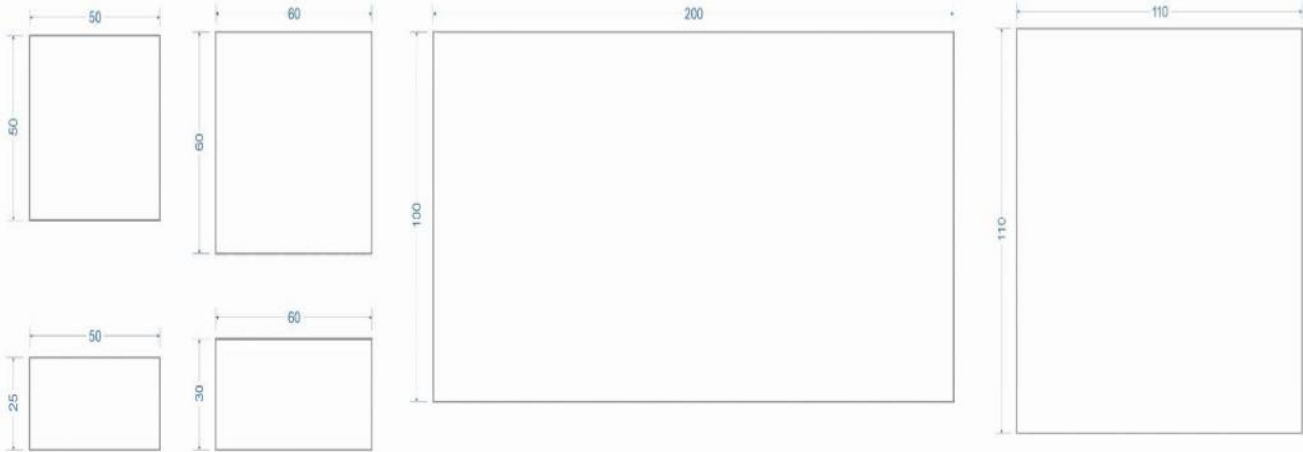


120 x 240 cm

11-12 MM | 15-16 Kg/m²

100% Precious Calibrated Perfect Material
Size Tolerance Only +/-0,01

Special Sizes of CRETOX Panels



THE GRANDE 295 x 122 cm

The Big Size Concrete Panel in 11 mm

IN SPECIAL
PRODUCTION
OF CRETOX,
ANY DESIRED SIZE
UP TO
MAX. 295 x 122 cm
AVAILABLE



**EXPOSED
CONCRETE**

METAL OXIDE



**WOOD FORM
CONCRETE**

**NATURAL
STONE**



TERRAZZO SOFT



We created unique models for your choices in our CRETOX Panels

QUATTRO with anchor dots design in smooth concrete, **PLAIN** as reflection of clear and pure concrete , **BRETNA** the soft terrazzo finish creating a luxury view, **PLANX** reflecting raw concrete in wood mould, **LENTA** is combining the planx model with anchor dots, **FORM** is wood design in mould concrete, **STRIPES** exceptional one for linear spaces, **CRUDE** the rawest appearance of exposed concrete, **ZONIT** stands as powerful honed stone surface, **GROOVE** brings the flows of the grains and **WAVES** is the reflection of lines..



QUATTRO



PLAIN



BRETNA



PLANX



LENTA



FORM



STRIPES



CRUDE



ZONIT



GROOVE



WAVES

COLOURS OF CRETOX



NETWORK GREY



DORIAN GREY



SMOKY GREY



DAISY GREY



BLACK EMPIRE



CANYON TWIST



PALM OCHRE



DEEP GREEN



OFF WHITE



RED ROYAL



GOLDEN HILLS



IRON BLACK



VINTAGE NETWORK GREY



VINTAGE DORIAN GREY



VINTAGE SMOKY GREY



VINTAGE DAISY GREY



SOFT VINTAGE NETWORK GREY



SOFT VINTAGE DORIAN GREY



SOFT VINTAGE SMOKY GREY



SOFT VINTAGE DAISY GREY



UNLIMITED COLOUR
OPTION WITH
CRETOX
HAUTE
COUTURE





Unlimited Layout Alternatives // Vertical -- Horizontal -- Mix Match



One Model of CRETOX Panel in Multiple Layouts

FIXATION OF CRETOX



GLUE TO EXISTING SURFACE / STANDARD METHOD FOR INTERIOR



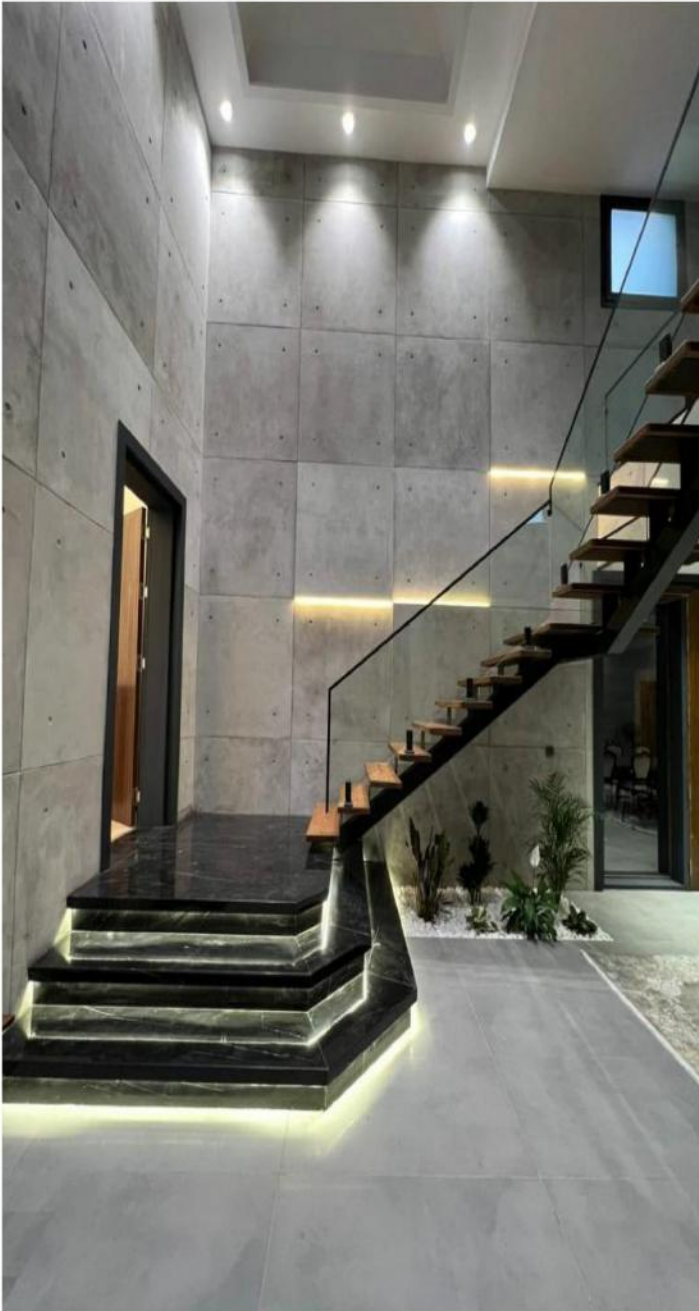
GLUE TO RAW WALL + MECHANIC SUPPORT / EXTERIOR 1



GLUE TO EXTERIOR BOARD + MECHANIC SUPPORT / EXTERIOR 2

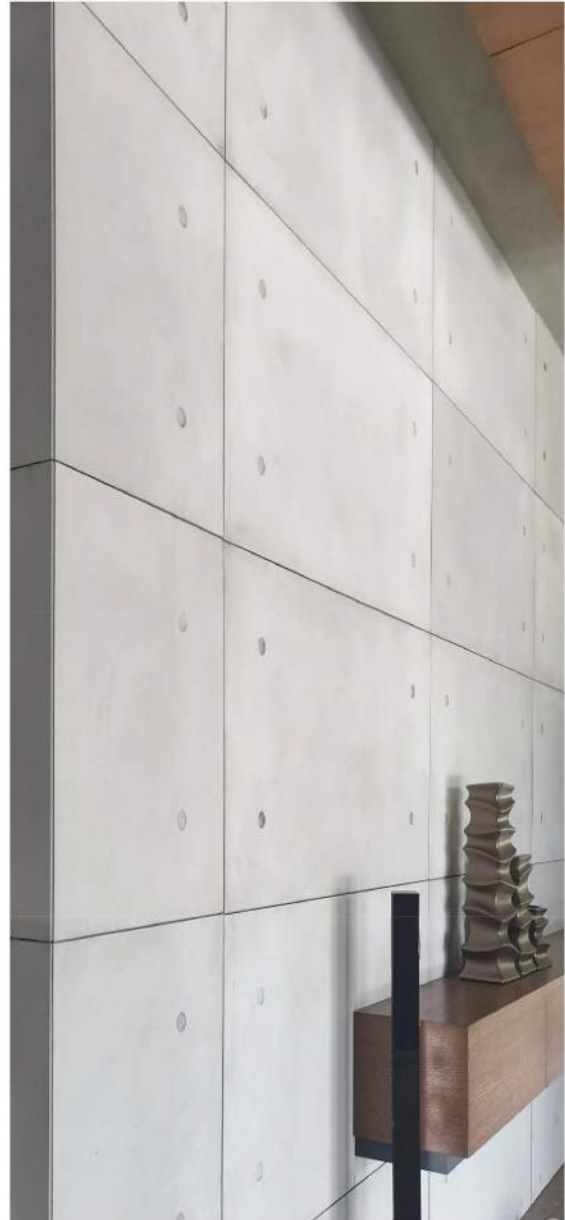


GLUE TO METAL FRAME + MECHANIC SUPPORT / EXTERIOR 3



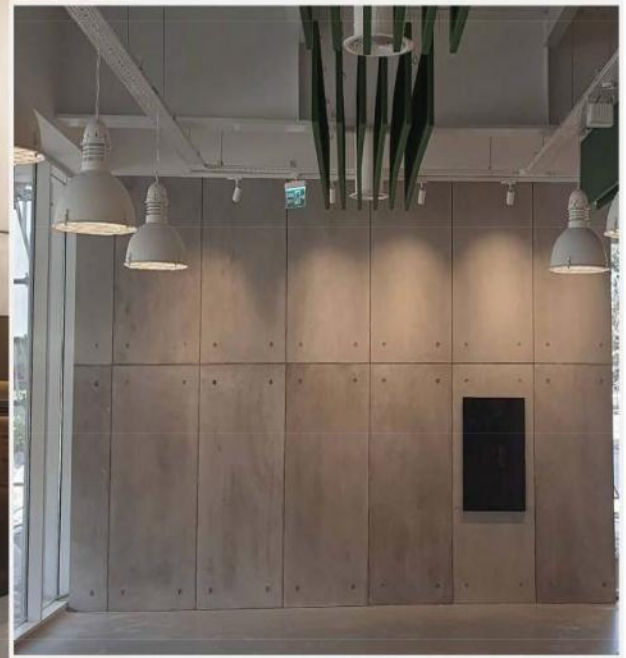


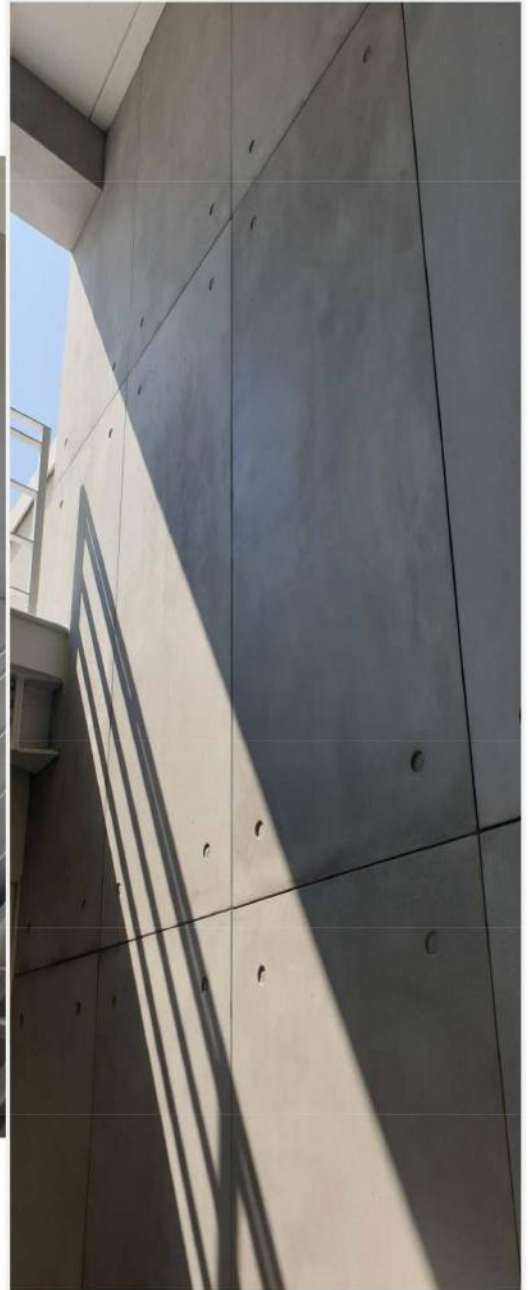
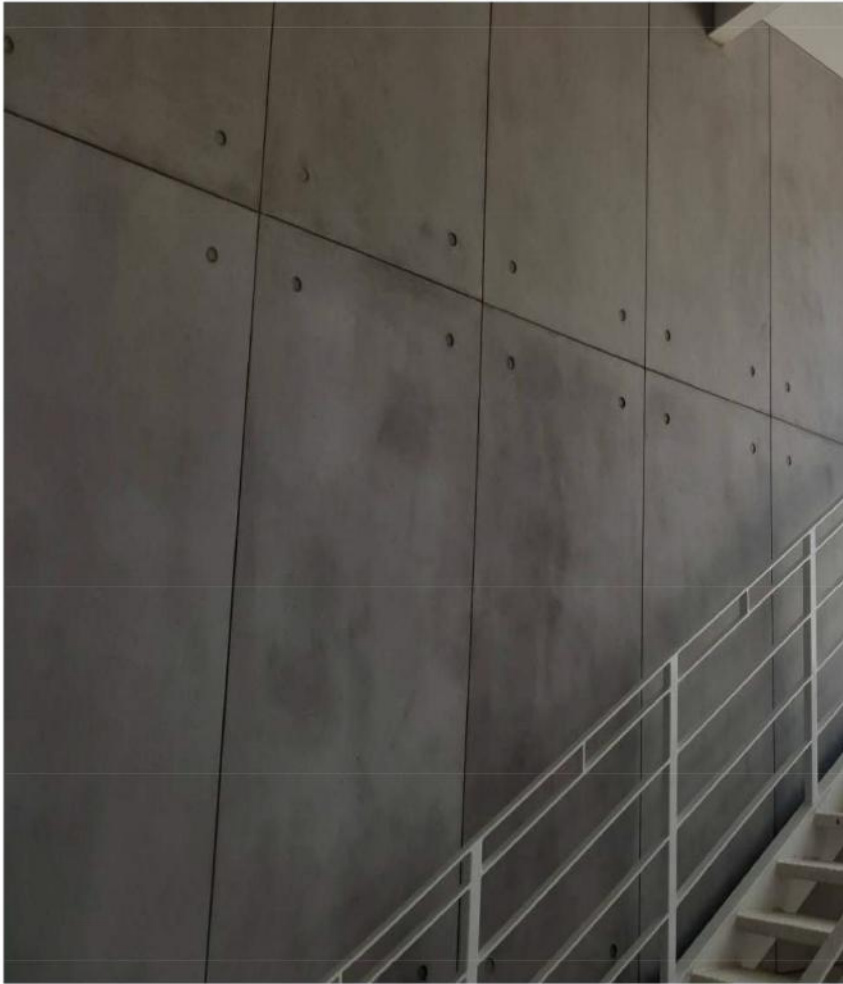








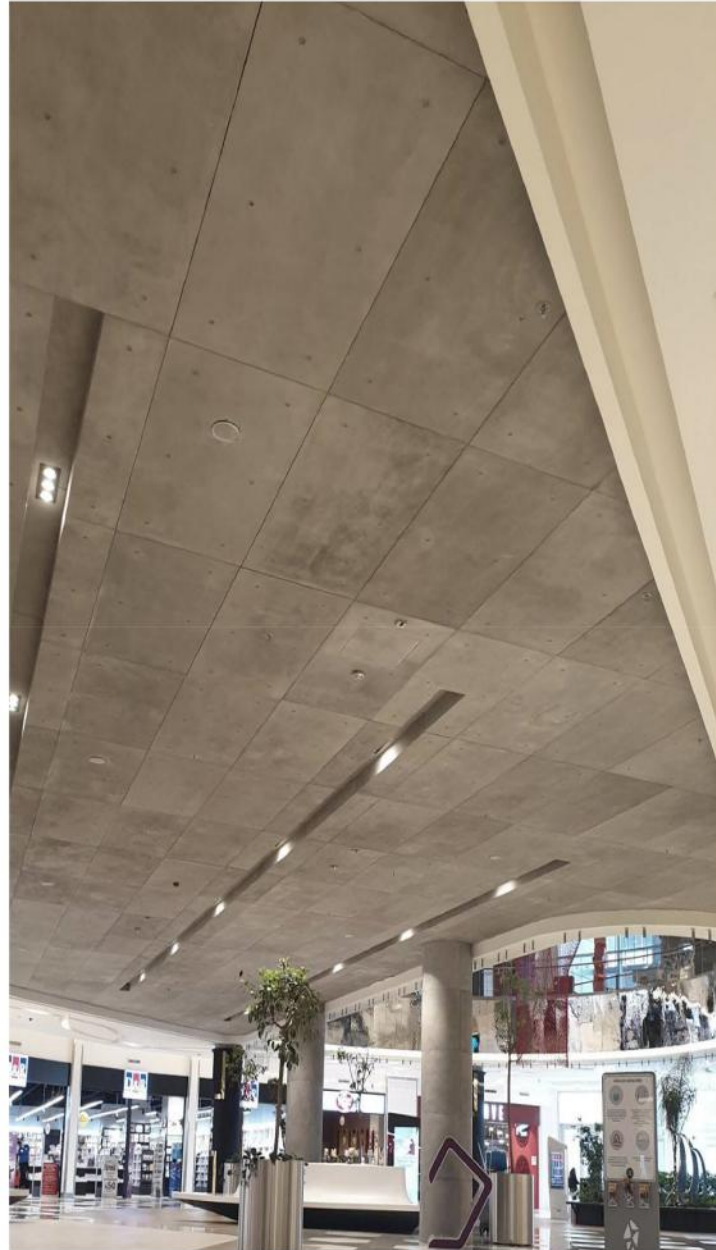






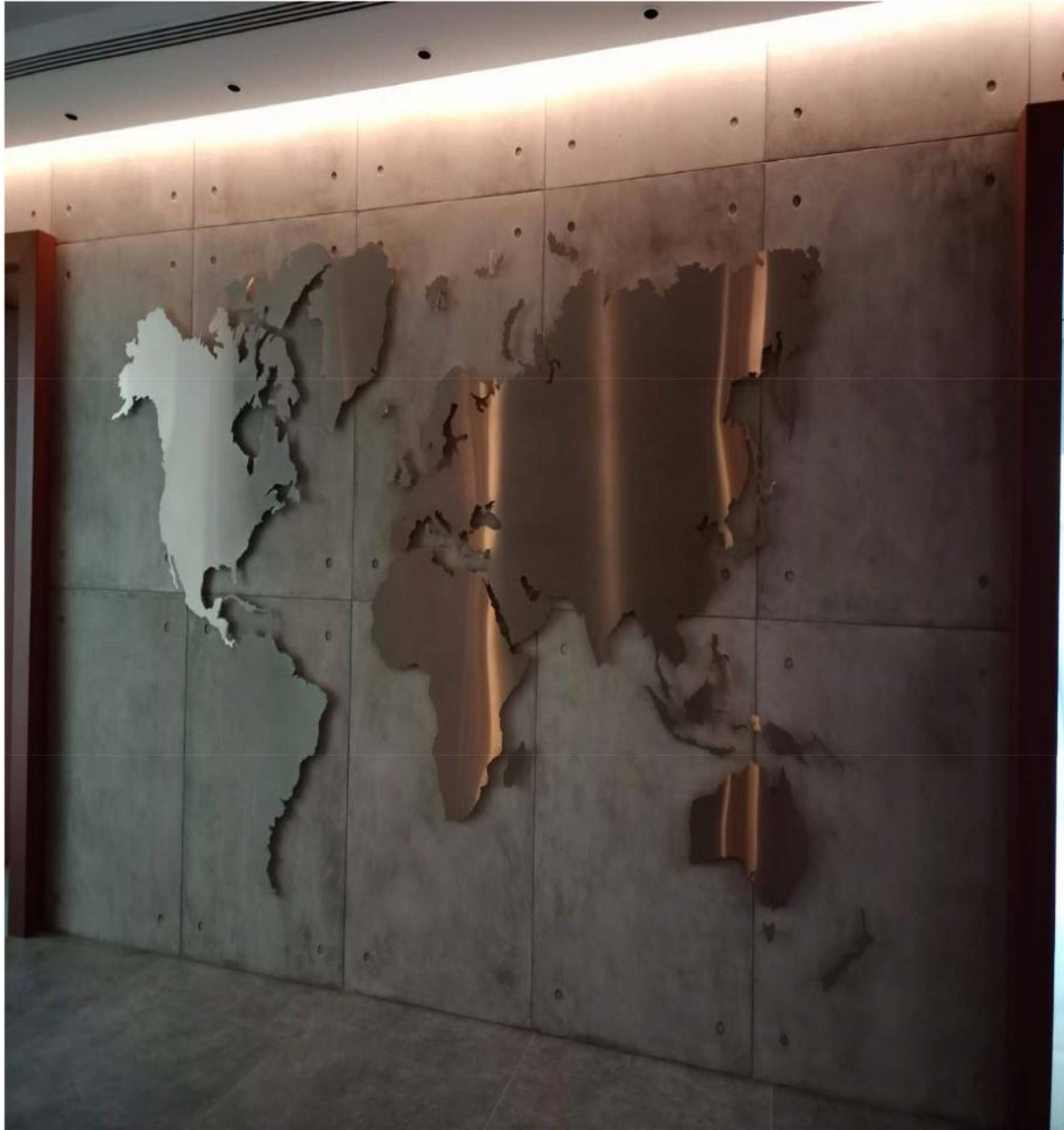






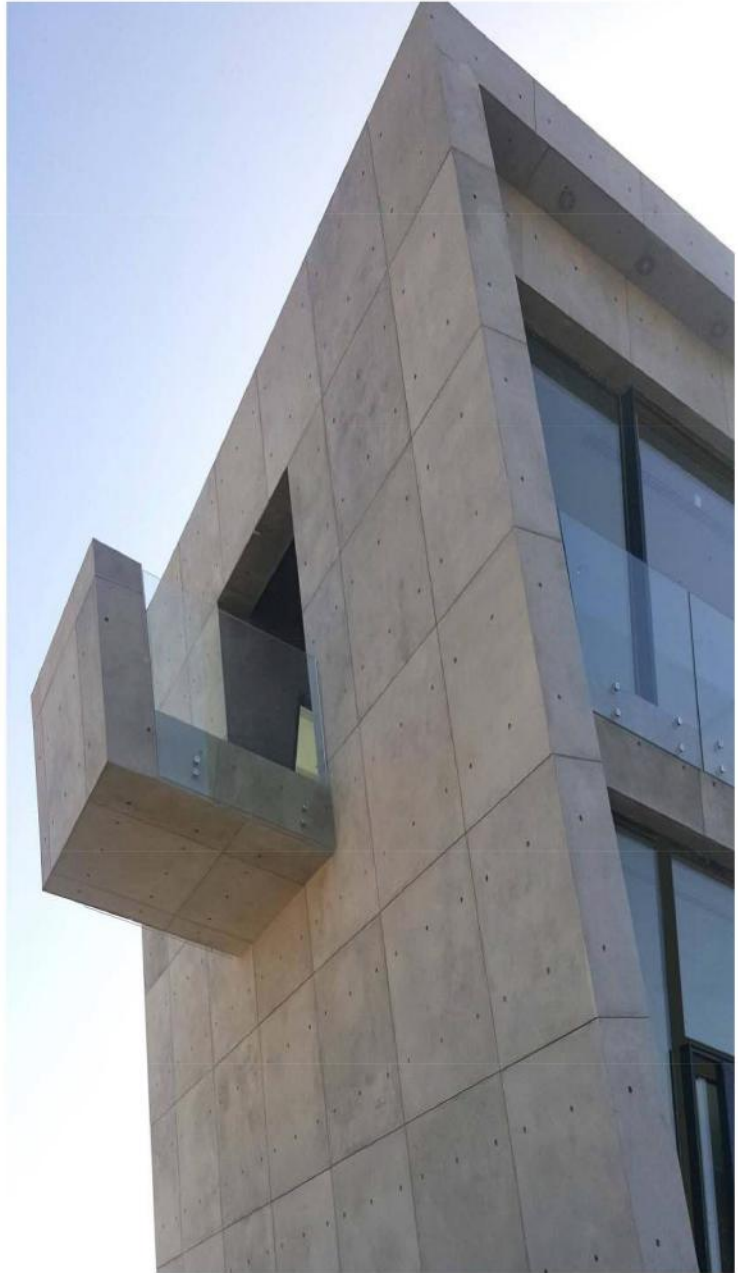


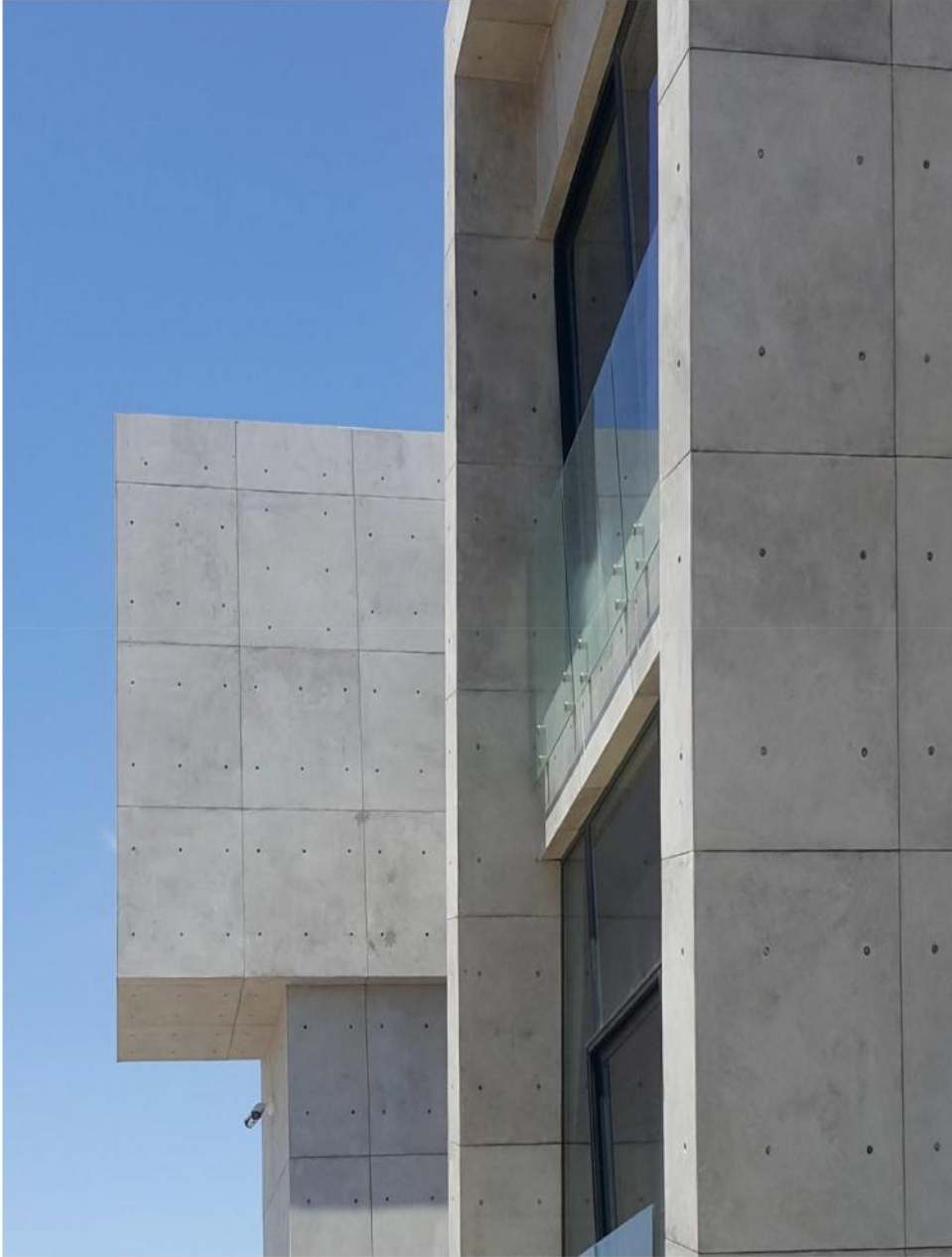




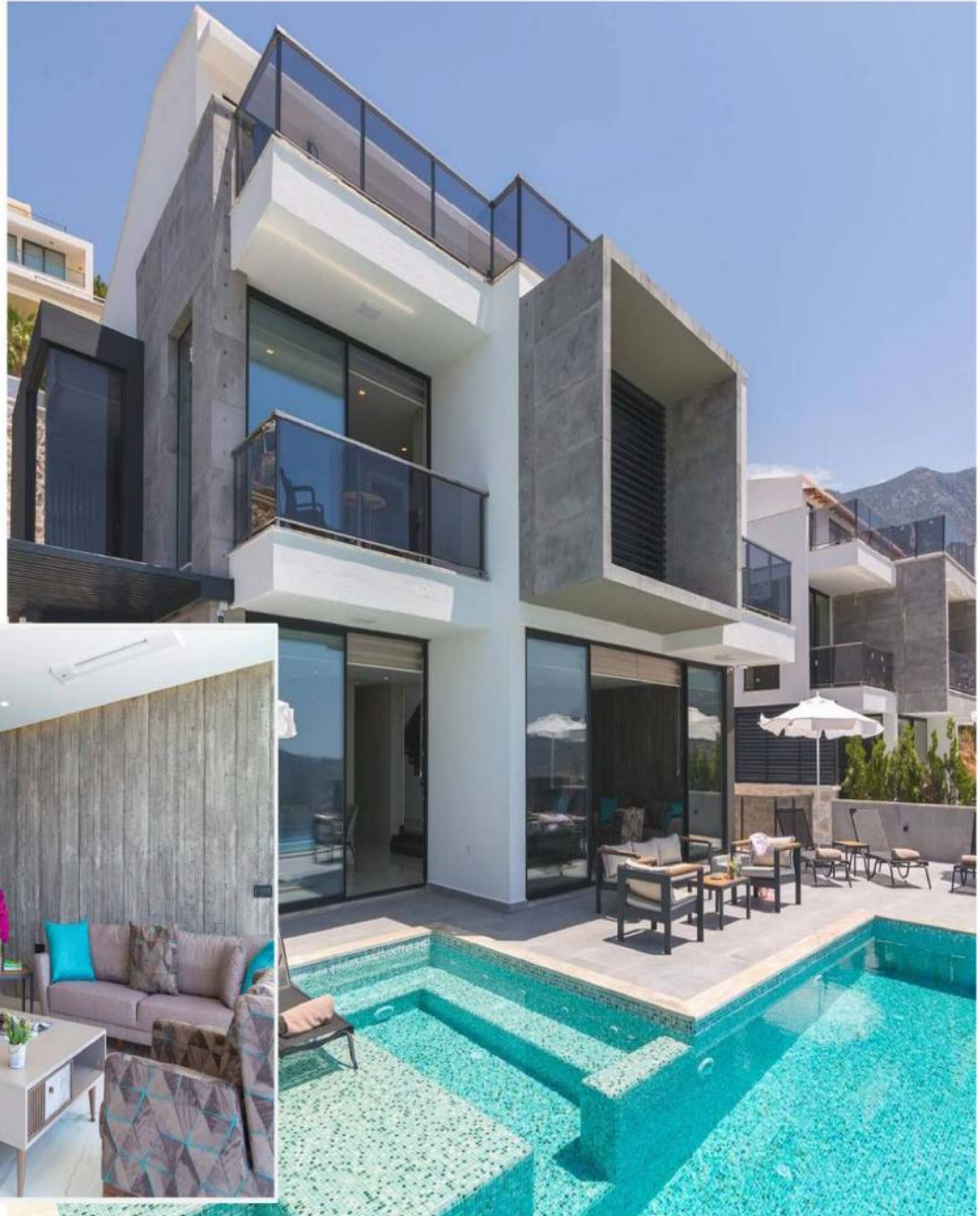




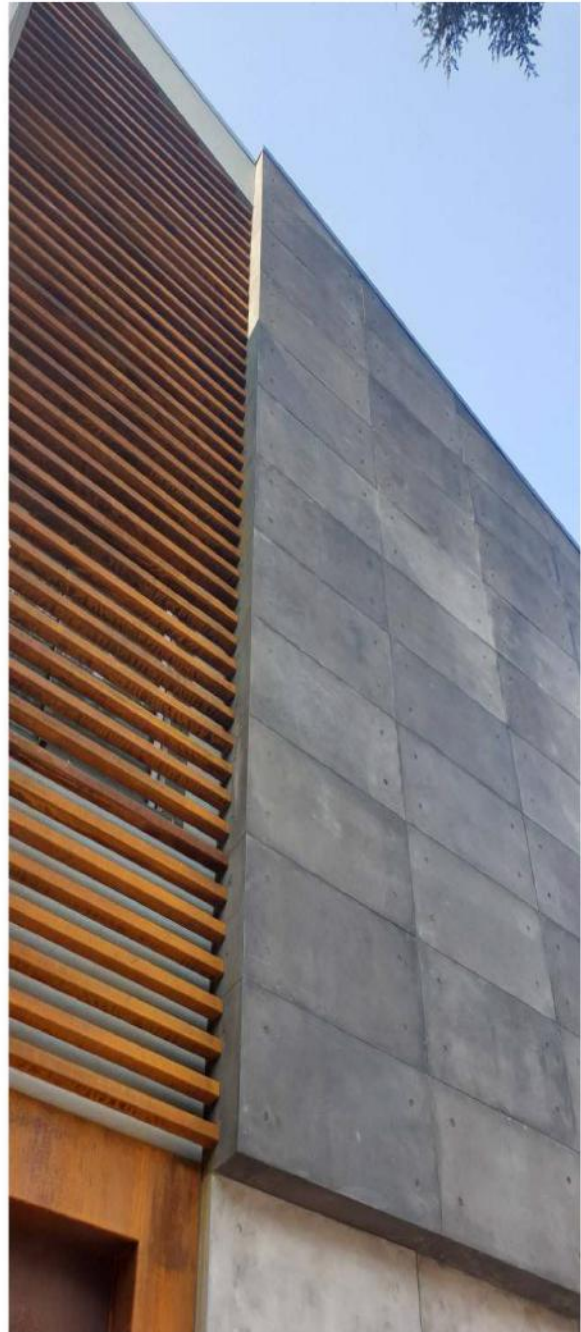
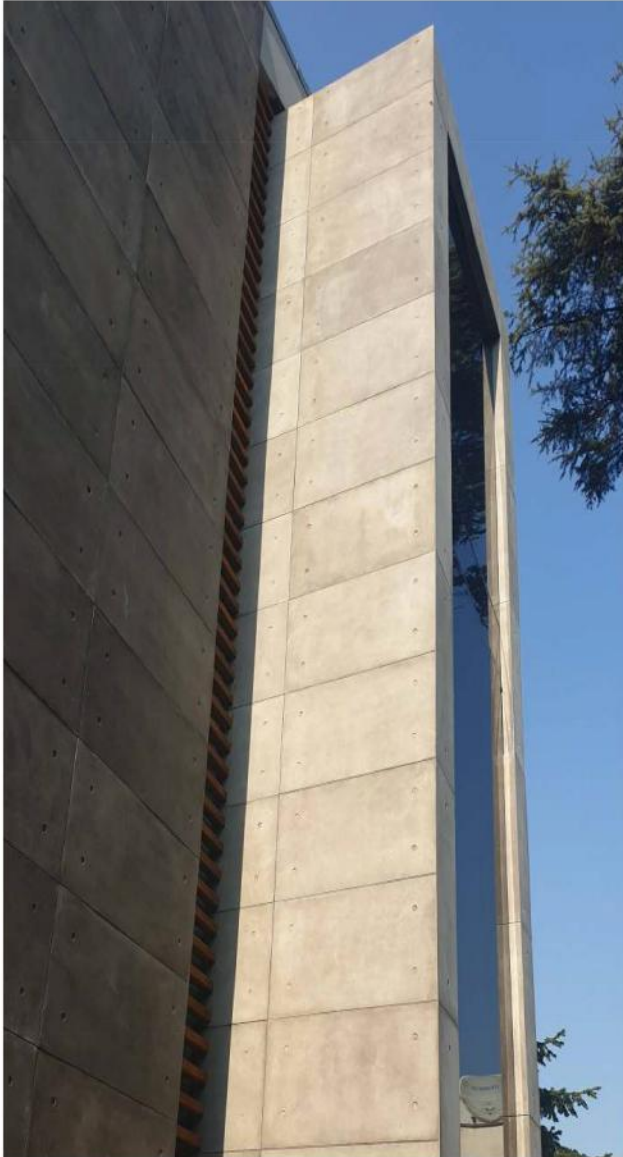




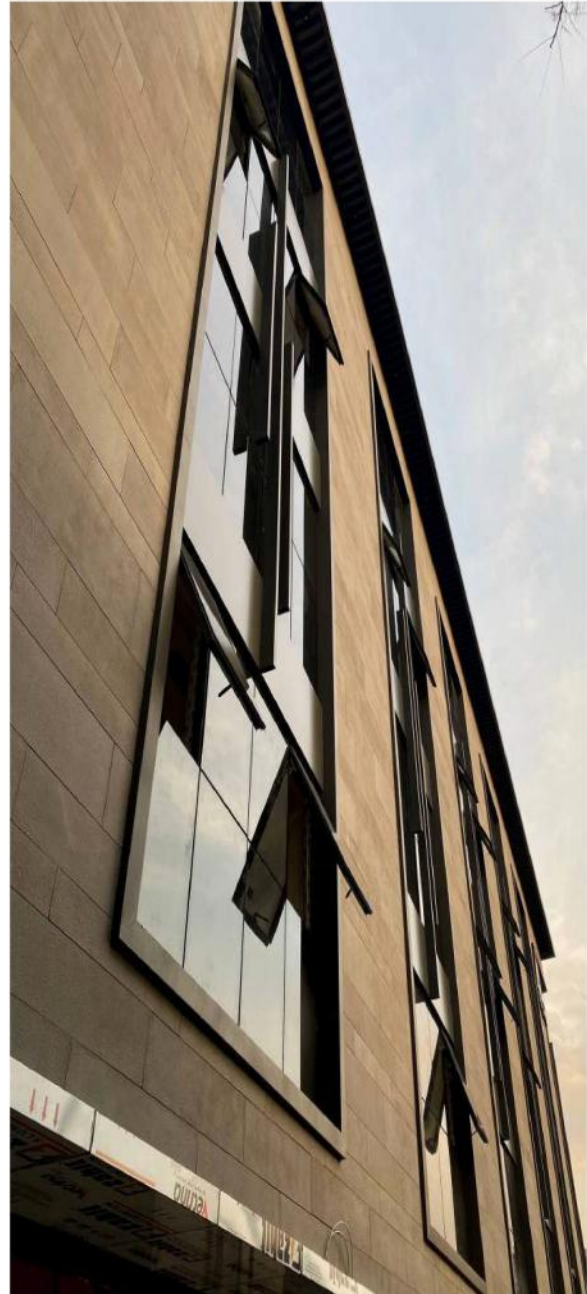
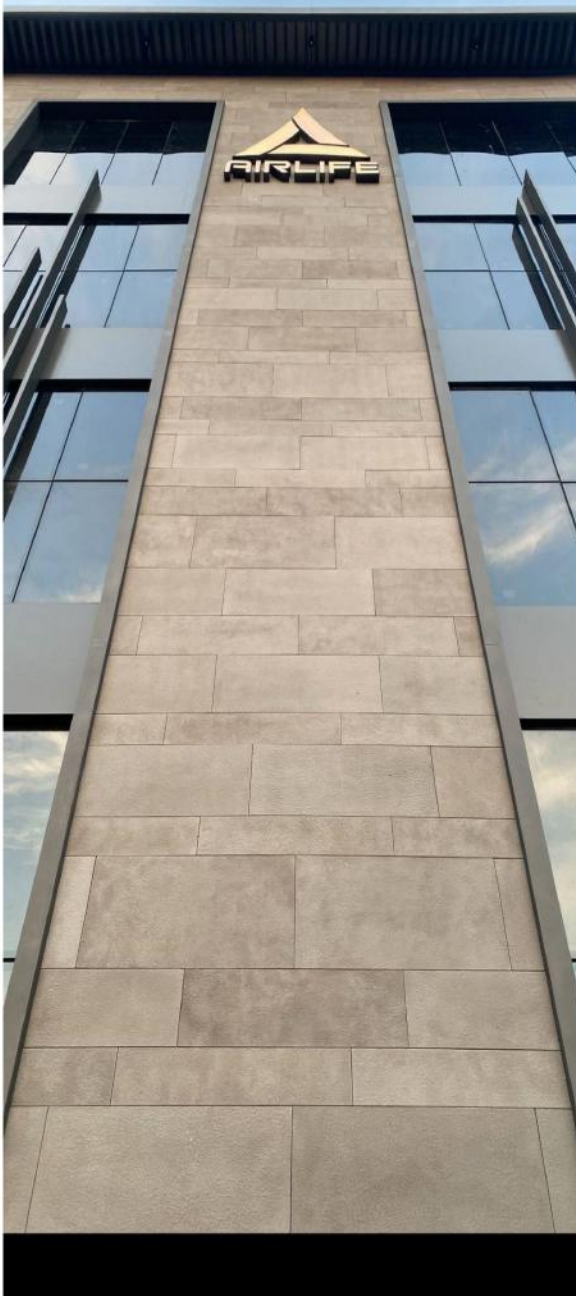








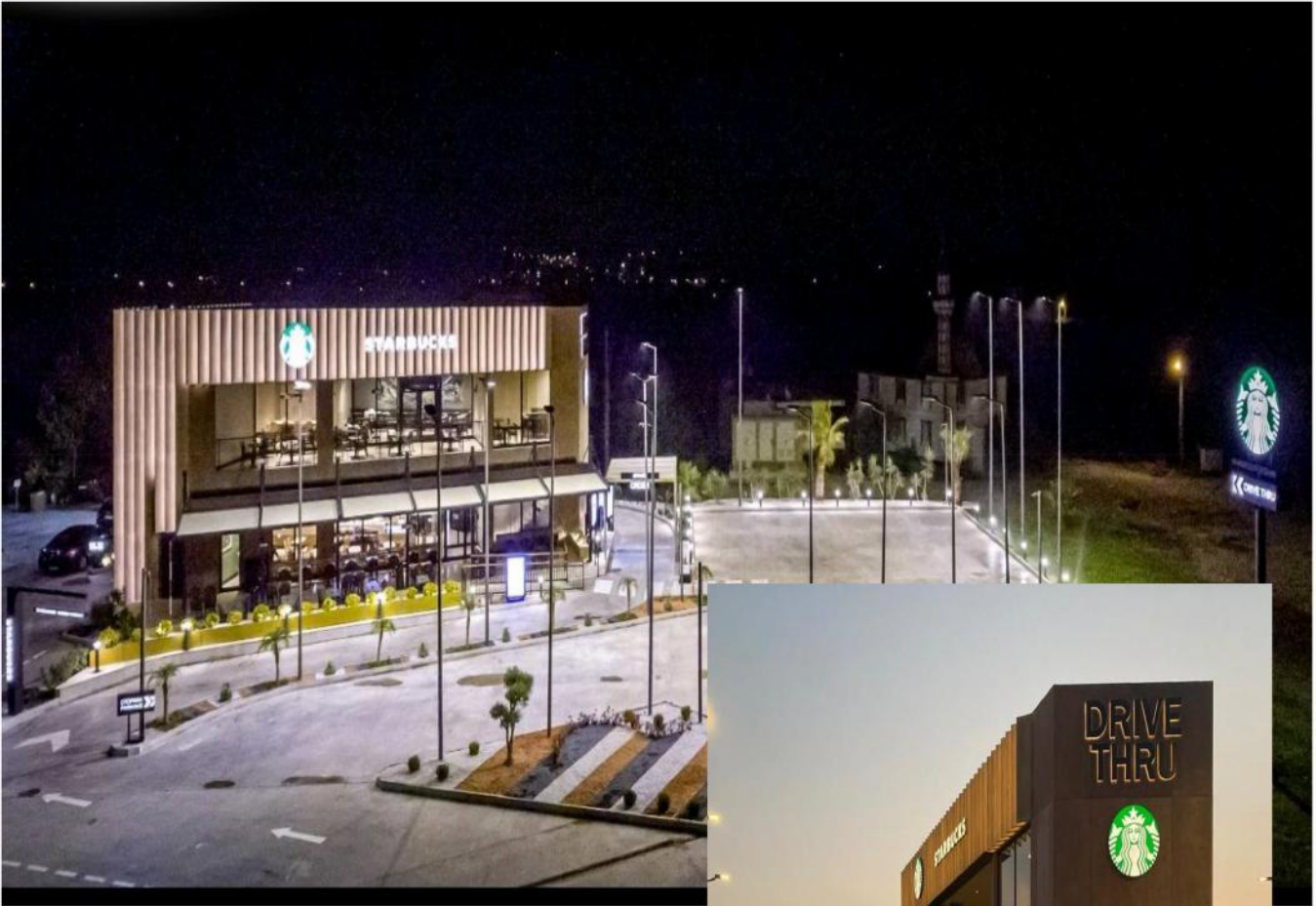




















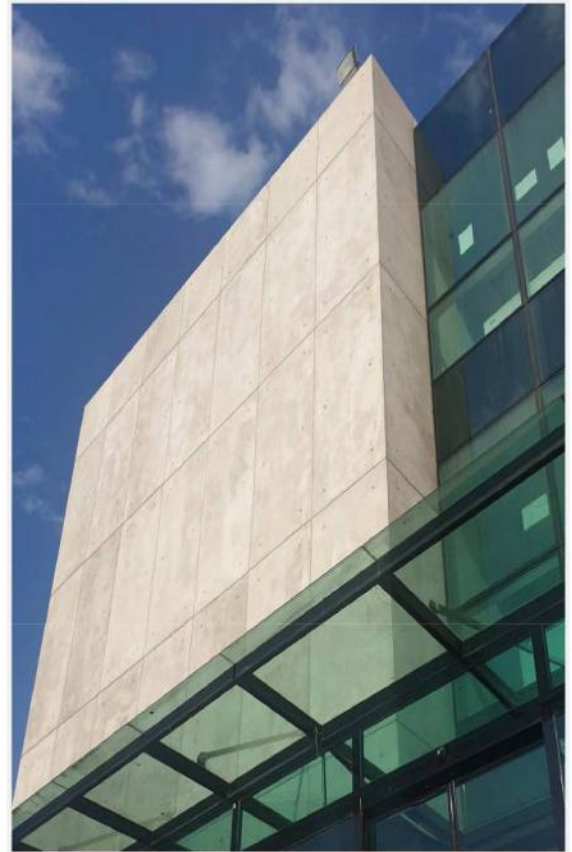
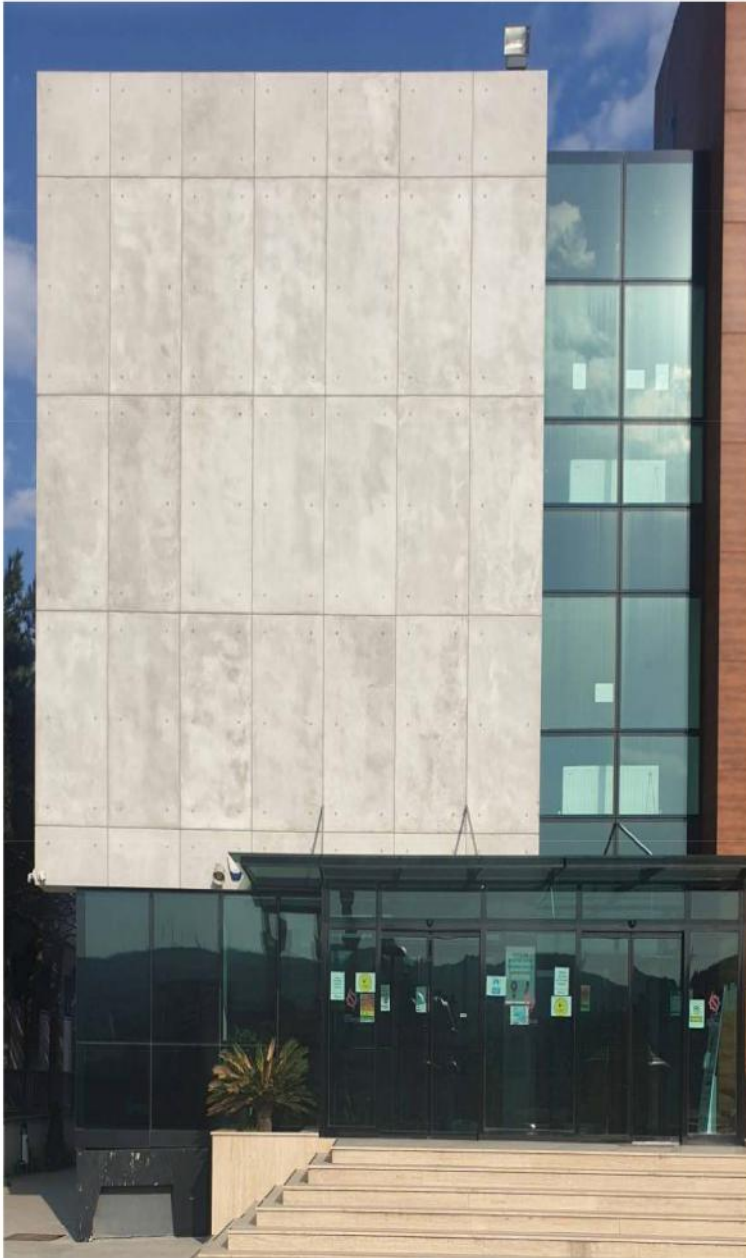






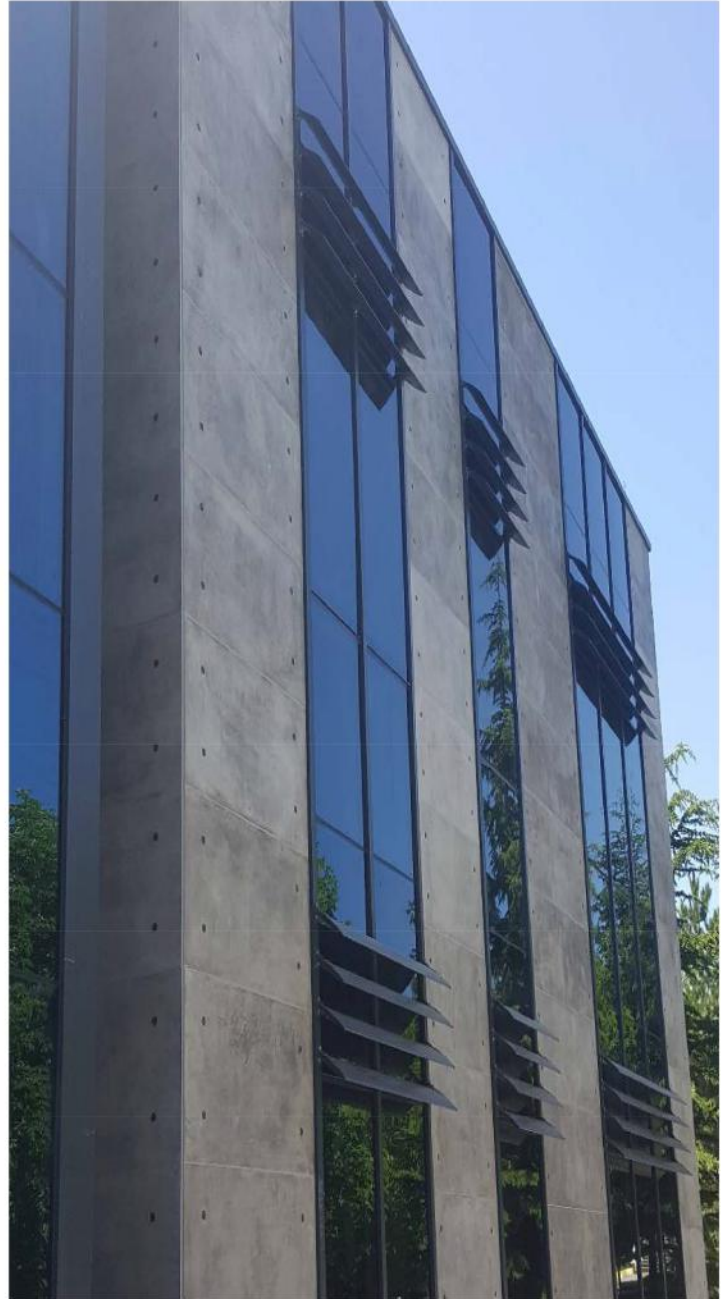






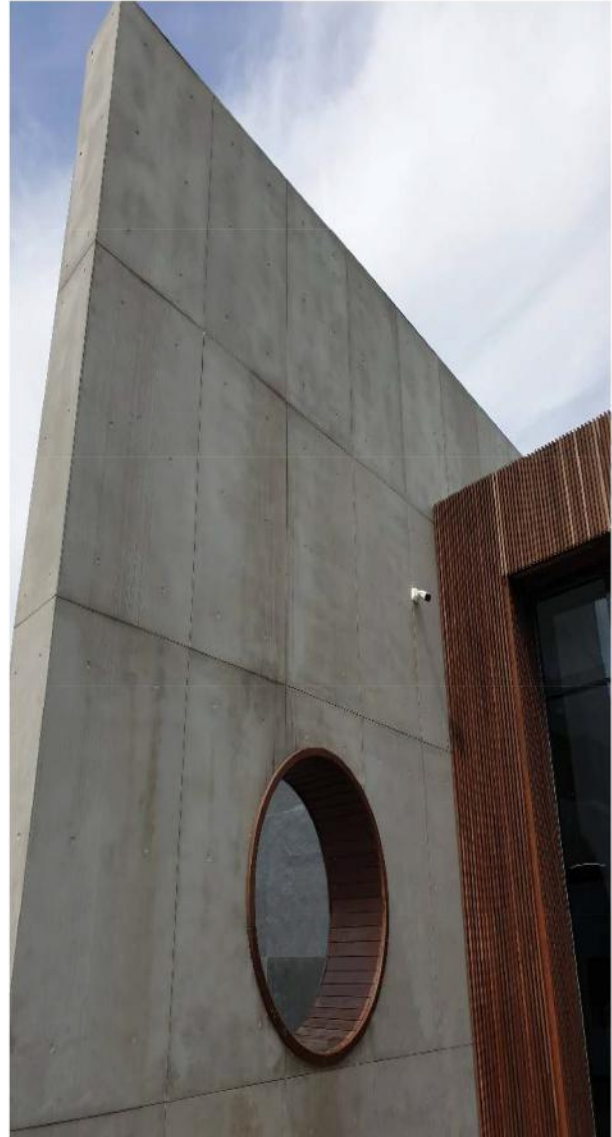


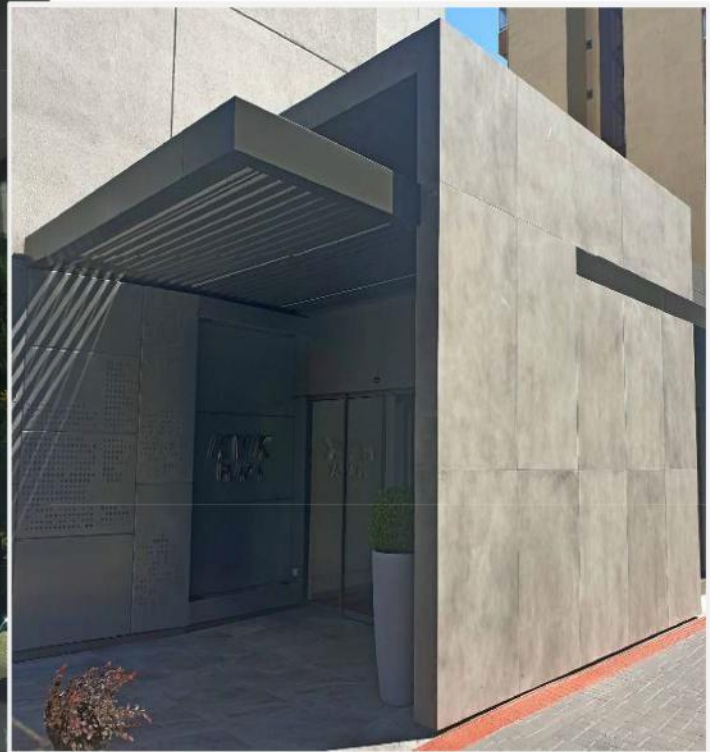




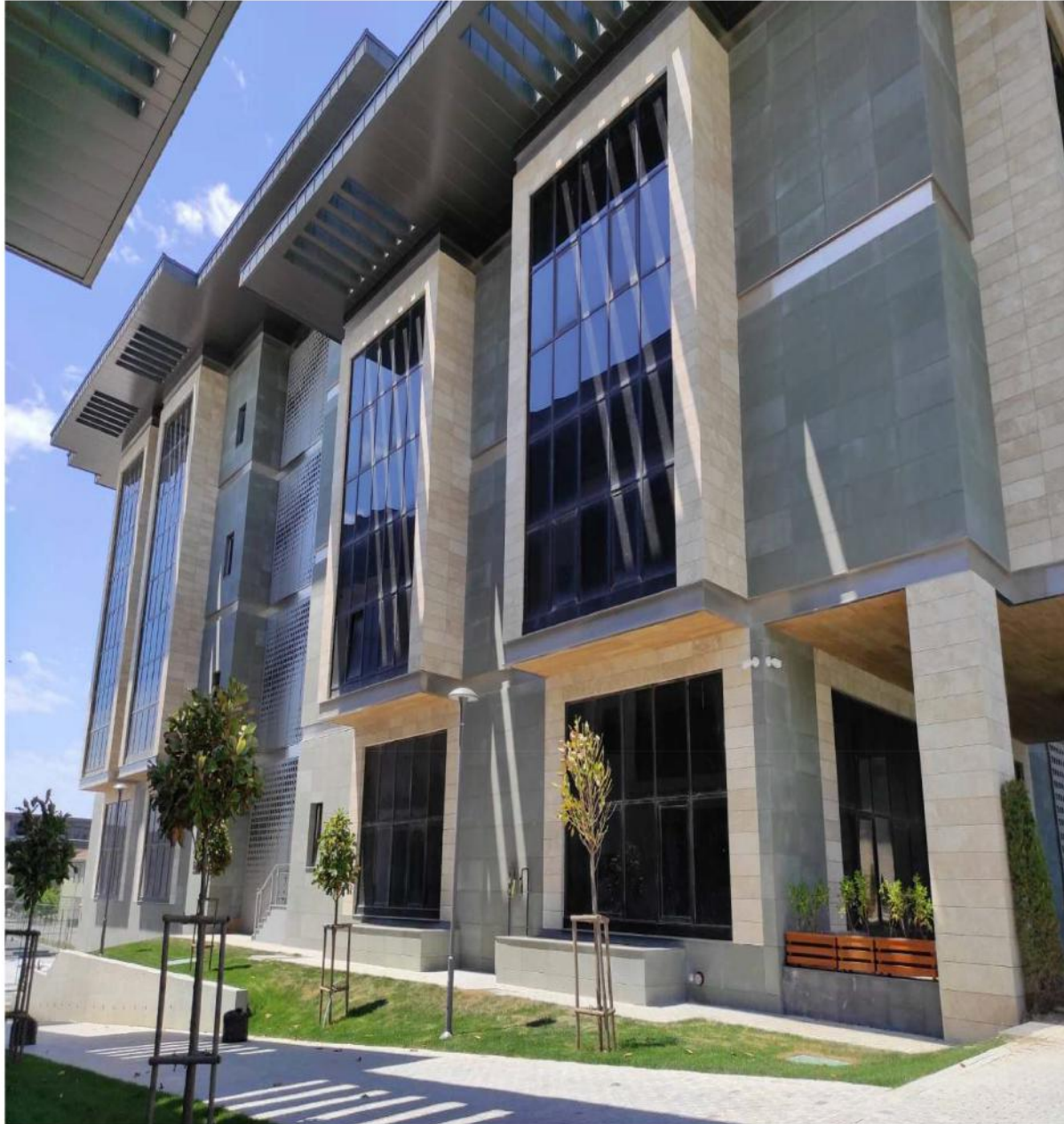


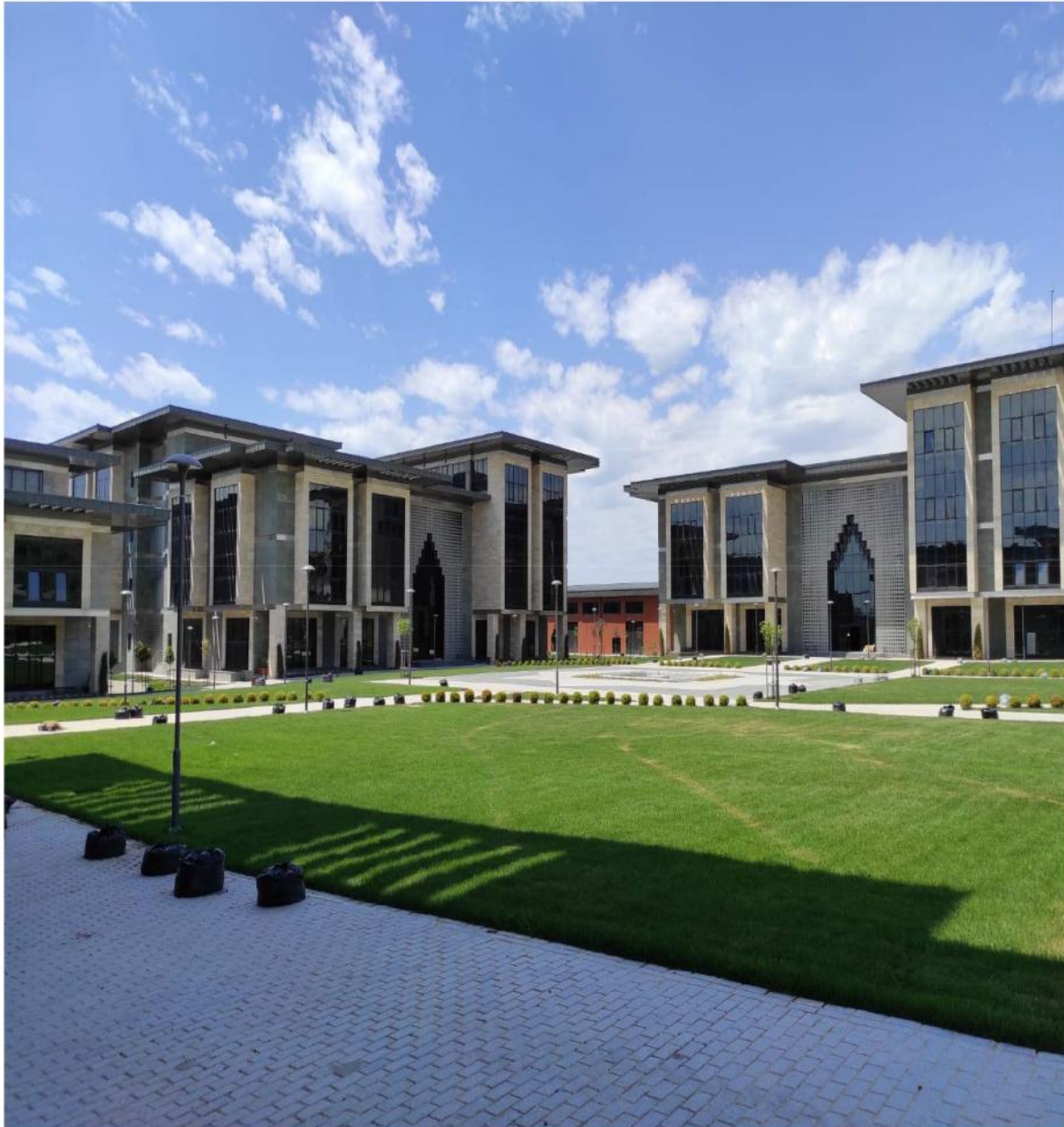
















KSE

Kurd Stone Erbil

NETEREN

PATENTED

DEC - 2015

CE

ARCHITECTURAL
**AWARD
WINNER**
BUILDING
MATERIAL
2019

ARKİTERA
Architectural Center
RAF 2019 AWARDS

NETEREN Dış Ticaret Ltd.Şti

HQ: Çubuklu Mah. Boğaziçi Cad. Karlı Plz. No:7/3 Beykoz / İSTANBUL

TEL: +90 216.693 16 18 FAX: +90 216.693 16 20

E-mail: info@neteren.com Web: www.neteren.com

Tax Office : Beykoz V.D / 631 045 9318

Chamber of Commerce / Reg.No : İSTANBUL / 882867

CRETOX **INVENTOR**
CRETOX **MANUFACTURER**
CRETOX **PATENT OWNER**
CRETOX **BRAND OWNER**

NETEREN

NETEREN Company Ltd.
www.neteren.com | İSTANBUL TÜRKİYE

17 YEARS **ANNIVERSARY**