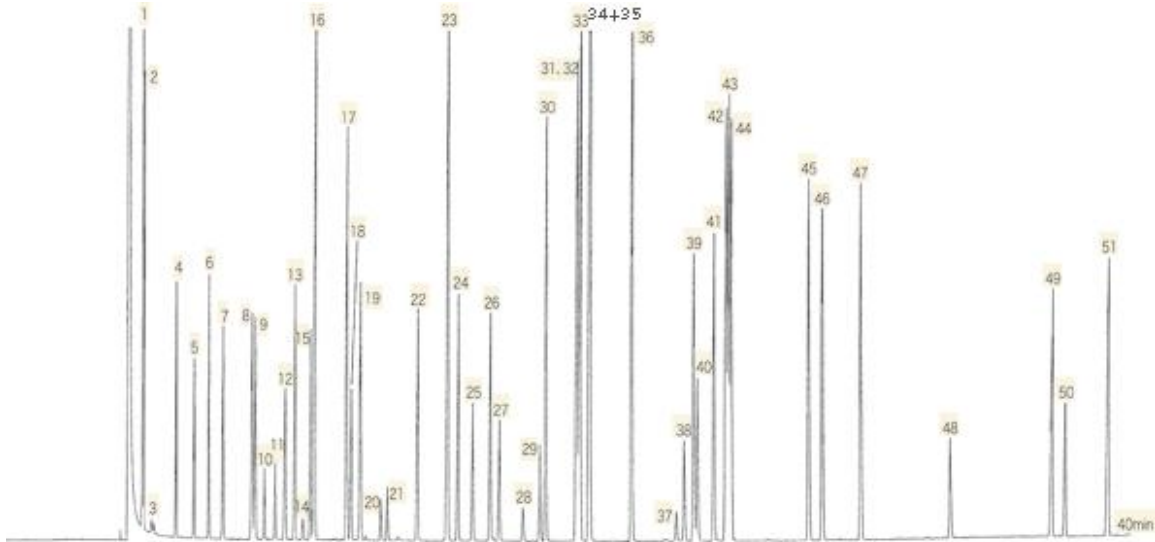


InertSearch™ for GC

InertCap® Applications

Halocarbons

Data No. GA024-0000



System	: GC/FID	Solutes :	1. Bromomethane	26. 1,3-Dichloropropane
Column	: InertCap AQUATIC 0.25mmI.D.×60m df=1.0µm		2. Chloroethane	27. Tetrachloroethene
Column Temp.	: 40°C →4°C/min→200°C		3. Trichlorofluoromethane	28. Dibromochloromethane
Carrier Gas	: He 190kPa		4. 1,1-Dichloroethene	29. 1-Chlorohexane
Injection	: Split 1 : 100 0.5µL		5. Methylenechloride	30. 1,2-Dibromoethane
Detection	: FID Range 1×16		6. trans-1,2-Dichloroethene	31. Chlorobenzene
Sample	: Halogenated hydrocarbons		7. 1,1-Dichloroethane	32. 1,1,1,2-Tetrachloroethane
			8. 2,2-Dichloropropane	33. Ethylbenzene
			9. cis-1,2-Dichloroethene	34. o-Xylene
			10. Chloroform	35. m-Xylene
			11. Bromochloromethane	36. p-Xylene
			12. 1,1,1-Trichloroethane	37. Bromoform
			13. 1,1-Dichloropropene	38. 1,1,2,2-Tetrachloroethane
			14. Carbon Tetrachloride	39. p-Bromofluorobenzene
			15. 1,2-Dichloroethane	40. 1,2,3-Trichloropropane
			16. Benzene	41. Bromobenzene
			17. α-Trifluorotoluene	42. o-Chlorotoluene
			18. Trichloroethene	43. m-Chlorotoluene
			19. 1,2-Dichloropropane	44. p-Chlorotoluene
			20. Bromodichloromethane	45. 1,3-Dichlorobenzene
			21. Dibromomethane	46. 1,4-Dichlorobenzene
			22. cis-1,3-Dichloropropene	47. 1,2-Dichlorobenzene
			23. Toluene	48. 1,2-Dibromo-3-chloropropane
			24. trans-1,3-Dichloropropene	49. 1,2,4-Trichlorobenzene
			25. 1,1,2-Trichloroethane	50. 1,1,2,3,4,4,-Hexachloro-1,3-butadiene
				51. 1,2,3-Trichlorobenzene