

# ANNUAL REPORT

ALLEN | BEAUREGARD | CALCASIEU | CAMERON | JEFF DAVIS



2022

# CORPORATE CORNERSTONE

Our Corporate Cornerstone companies designate their gifts to help underwrite United Way of Southwest Louisiana's annual campaign, dues and administrative costs. With these designations, United Way of Southwest Louisiana is able to maximize the dollars donated to our campaign.

PHILLIPS 66  
Westlake Chemical  
CITGO

PLATINUM  
TOTAL INVESTMENT OF \$100,000 +

Louisiana Pigment  
EXCEL PARA LUBES  
lyondellbasell

WHITE GOLD  
TOTAL INVESTMENT OF \$50,000 - \$99,999

Ingevity GRACE  
Talent | Technology | Trust™  
RAIN CARBON INC. entergy

TITANIUM  
TOTAL INVESTMENT OF \$25,000 - \$49,999

AMERISAFE TURNER INDUSTRIES  
Firestone Polymers Calcasieu Refining Co.

PEWTER  
TOTAL INVESTMENT OF \$10,000 - \$24,999

POSITIVE COMMUNITY IMPACT

## NICKEL SPONSORS

TOTAL INVESTMENT OF \$5,000 - \$9,999

- CIVIL CONSTRUCTION
- FIRST FEDERAL BANK OF LOUISIANA
- HANCOCK WHITNEY
- JD BANK
- LOTTE CHEMICAL

## COPPER SPONSORS

TOTAL INVESTMENT OF \$150 - \$4,999

- ALFRED PALMA, INC.
- ALLEN PARISH COMMUNITY HEALTHCARE
- AMERICAN PRESS
- BEAUREGARD ELECTRIC CO-OP
- B1BANK
- CALCASIEU PARISH DISTRICT ATTORNEY'S OFFICE
- CENTERPOINT ENERGY
- FIRST NATIONAL BANK OF LOUISIANA
- FLUOR FEDERAL PETROLEUM OPERATIONS
- GEORGIA PACIFIC
- INDORAMA VENTURES
- INSURANCE RESOURCE GROUP
- LANGLEY, WILLIAMS & COMPANY, LLC
- MERCHANTS & FARMERS BANK & TRUST
- RECON MANAGEMENT SERVICES, INC.
- RED RIVER BANK
- R & H QUALITY REFRACTORY SERVICES, INC.
- SASOL NORTH AMERICA
- STINE LUMBER COMPANY
- WEST CALCASIEU CAMERON HOSPITAL

# MISSION: POSITIVE COMMUNITY IMPACT



## BORN LEARNING

Message from the President & CEO	4
Message from Chairman of the Board	6
Board of Directors	7
Governing Board	7
About United Way of Southwest Louisiana	8
Volunteer of the Year Award	10

## VITA TRAINING

Spirit of Southwest Louisiana Award	10
Employee Campaign Chair Award	10
Corporate Pride Award	10
Message from the Campaign Chair	11
Campaign Cabinet	11
Leading Company Campaigns	12
Employee Recognition Awards	13
Message from the Community Investment Chair	16

## WRITESTART

Community Investment Committee	16
Community Impact	17
Partner Agencies	22
Distributions July 2021 - June 2022	23
Investment Committee	23

# PRESIDENT & CEO

DENISE DUREL



*“We’ve built*

I have stood amazed in the past year as I watched the Southwest Louisiana community unite to help each other build back and restore their neighborhoods. I am grateful to be part of this vibrant region with so much to offer and such resilient families and individuals.

Your generosity and belief in United Way of Southwest Louisiana’s mission and our team have made this past year possible for thousands to benefit.

As we move through our 83rd year, it is clear our mission is to continue toward long-term change and not temporary fixes that will create more sustainable futures for our region’s youngest residents and make their futures brighter.

*Denise Durel*



# My favorite moments

Being able to give back to those hurting in South Louisiana following Hurricane Ida was definitely at the top of my list. The Barbe High School Class of 2001 was just one of the groups that allowed us to reach the \$50,000 that we gave them.

The day we drove with Team CITGO to Houma with supplies, that big check and cooked food for thousands was a day I will never forget. It represents everything United Way of Southwest Louisiana has come to build a solid reputation for. If there is a challenge given, we accept it and meet it with grace and proudly stand behind our work. Many happy tears were shed that day as we gave back what had been given to us the year before.

*...a solid reputation for responding.”*



Louisiana Governor's Office of Homeland Security and Emergency Preparedness presented us with the 2022 Louisiana Emergency Preparedness Association Award (LEPA) for Outstanding Service in Emergency Preparedness.

This was presented in honor of our work during the 2020 and 2021 pandemic, hurricanes, freezes and flooding events. Our team both responded to and prepared the community prior to each event while a majority of local nonprofits were forced to close.



# CHAIRMAN OF THE BOARD

## BARRY BROWN

RED RIVER BANK

Being Chairman of the Board for United Way of Southwest Louisiana is something I continue to be proud of every day. I have been able to share my knowledge while also gaining an education in how to handle challenges our community has never faced.

One thing I have enjoyed most is the growth of dedicated volunteers, donors and sponsors at United Way of Southwest Louisiana. The enthusiasm and love this board and team have for the individuals and families living in our five parishes brings a wide variety of partners to serve.

I am honored to have served alongside everyone in this capacity and cannot wait to see how they bring positive change to our home in the future.

*Barry Brown*

The issues and obstacles our neighbors face are complicated. But we exist for one simple reason: to create opportunities for people to succeed.



# EXECUTIVE BOARD



**JAMES MCGEE**  
**VICE CHAIR**  
CALCASIEU PARISH DISTRICT ATTORNEYS  
OFFICE



**BOYD BOUDREAUX**  
**VICE CHAIR**  
THE EVANGELINE BANK AND TRUST COMPANY



**KIRK PELLERIN**  
**TREASURER**  
SABINE STATE BANK



**LEONA FLETCHER**  
**SECRETARY**  
RAIN CARBON, INC.



**STEPHEN DWIGHT**  
**MEMBER AT LARGE**  
CALCASIEU PARISH DISTRICT ATTORNEY



**KEITH FAUL**  
**MEMBER AT LARGE**  
LYONDELLBASELL



**KEVIN LACY**  
**PAST CHAIR**  
INVESTAR BANK

# GOVERNING BOARD

**TONY BARRE**  
INDORAMA VENTURES

**CURTIS BRESCHER**  
WESTLAKE CORPORATION

**LOUIS-PIERRE CLEMENT**  
ALCOA CARBON PRODUCTS

**PAULA GASPARD**  
FIRESTONE POLYMERS, LLC

**TANYA GAUDET**  
JEFF DAVIS PARISH SCHOOL SYSTEM

**ROBERT GELINAS**  
RETIRED, BIOLAB, INC

**TONYA GRIFFITH**  
WELLS FARGO

**JASON GUIDRY**  
CITGO PETROLEUM CORPORATION

**RICH HARBISON**  
PHILLIPS 66

**DEBRA LASTRAPES**  
CALCASIEU REFINING COMPANY

**FLOYD MITCHELL**  
CHEMICAL WASTE MANAGEMENT

**PATRICIA PREBULA**  
PREBULA PUBLIC RELATIONS LLC

**SIMON RANDOLPH**  
GOLDEN NUGGET LAKE CHARLES

**JOLIE RHINEHART**  
PHILLIPS 66

**CLAIBORNE SELF**  
CC'S PAWN SUPERSTORE  
WAXING THE CITY

**MIKE SOLARI**  
MIKE SOLARI COMPANY

**GREGORY P THIBODEAUX**  
TURNER INDUSTRIES

# ABOUT UNITED WAY OF SOUTHWEST LOUISIANA

For 83 years, United Way of Southwest Louisiana has been committed to building strong, successful families and strengthening our community. When you join the United Way team, you're supporting a powerful movement to impact the region's most pressing health and human service needs.

*We cannot talk about who we are without talking about how we give back to our partners in their time of need.*



*Everyone who donated was grateful to give back and help someone else. We come from a resilient region of caring individuals.*

Hurricane Ida hit near Port Fourchon, Louisiana on August 29, 2021. United Way of Southwest Louisiana was the first to reach out to the team following Hurricane Ida donation and multiple volunteer trips to assist in Southwest Louisiana's response and recovery efforts.

A partnership with the City of Lake Charles allowed us to collect many loads of supplies for the hurricane in delivery.

Team CITGO partnered with us on the last day to bring a trailer load of supplies, cook 3,000 hot meals, and deliver supplies to the community.

## 50K IDA CHALLENGE

**MISSION:** Raise \$50,000 for United Way of South Louisiana

**RESULT:** \$105,000 RAISED



Our Initiatives and Funded Partner Agencies form the core of community impact, but we act swiftly when we see an unfulfilled need.

Addressing critical needs with a swift yet smart response is why United Way of Southwest Louisiana is called on routinely by partners from all over the country. A hallmark of the employees working at United Way of Southwest Louisiana is the ability and need to work a physically laborious job during the day and complete routine job duties as required on the side and after those hours.

Recently, our leadership has appeared on Swedish Public TV and been quoted by the Associated Press in the Los Angeles Times.



Vice President  
**COMMUNITY IMPACT**  
**LAURIE MARTIN**

Senior Director  
**ADMINISTRATION & FINANCE**  
**JENNIFER DIMAS**

Senior Director  
**MARKETING & COMMUNICATIONS**  
**TAMI CHRISOPE**

Director  
**RESOURCE DEVELOPMENT**  
**BECKY AINSWORTH**

Director  
**ENGAGEMENT**  
**BETH GUIDRY**

Director  
**211 & RESOURCE INFORMATION**  
**SARINA CLOONEY**

Southwest Louisiana immediately launched relief efforts for the

after Hurricane Laura's landfall in 2020. They made a \$50,000  
efforts. We launched the 50K IDA CHALLENGE to return the

hardest hit rural areas with the Ward 3 Marshals assisting

with meals and deliver the cash donation.

# AWARDS



## **CORPORATE PRIDE** **CITY OF LAKE CHARLES**



Each year, the Corporate Pride Award honors the company or organization that has provided leadership to United Way of Southwest Louisiana both financially as well as worked to create a strong partnership working together to make our community stronger.



## **VOLUNTEER OF THE YEAR** **DAVID RAMIREZ**

Honors someone that highlights our broad base of volunteers and their contributions to all of us.

David gave 92.5 hours of his precious time and talent to United Way in 2022 in covid food distributions, literacy kits, resource fairs, Ida supply drives and Battle for the Paddle. He didn't miss a thing.



## **FAMILY VOLUNTEER OF THE YEAR** **KASAN COLEMAN**

Honors a family that highlights our broad base of volunteers and their contributions to all of us.

Kasan and his father assist our team with clean up duty following events like Battle for the Paddle. His father feels he should learn to give back to his community from a young age.



## **JIM LEIGH AWARD** **CHRISTY PAPANIA-JONES**

Awarded to the Campaign Division with the highest percent increase from the previous year.

Christy, our Agency Chair, finished at 29.1% above last year.



## **SPIRIT OF SOUTHWEST LOUISIANA** **BEVERLY SCHALON**

Honors someone with a positive attitude toward life and an active volunteer in the community.

Beverly always makes herself available no matter the task with humor that cannot be matched. We are always lucky when she is not off enjoying her retirement on a whirlwind adventure and can help.



## **EMPLOYEE CAMPAIGN AWARD** **ELIZABETH EUSTIS**

Honors an ECC who like Leonard Richard is every bit the heart and soul of a company's campaign.

Elizabeth is the Communications Specialist at Phillips 66 and serves as the ECC. Their campaign has continued to grow each year under her leadership.

# CAMPAIGN CHAIR

## STEPHEN DWIGHT

**CALCASIEU PARISH DISTRICT ATTORNEY**

Chairing the 2021 United Way of Southwest Louisiana campaign was a true honor. I was privy to many personal stories while speaking to community members about the value of the campaign. The stories cemented, even more, my support for the long-term goals of this organization.

Families have leadership here they can trust to guide them toward the actual building blocks of a successful life. Decisions are made with forethought and planning, even when swift action is necessary.

I am proud to have helped shine a light and bring supporters into the United Way family.

*Stephen Dwight*



# CAMPAIGN CABINET

**AGENCY CHAIR**  
**CHRISTY PAPANIA-JONES**  
ST. NICHOLAS CENTER FOR CHILDREN

**EDUCATION CHAIR**  
**HOLLY HOLLAND**  
CALCASIEU PARISH SCHOOL SYSTEM

**F.I.R.E CHAIR**  
**BARRY BROWN**  
RED RIVER BANK

**GOVERNMENT CHAIR**  
**STEPHEN DWIGHT**  
CALCASIEU PARISH DISTRICT ATTORNEY

**HEALTH CO-CHAIR**  
**JANIE FRUGE**  
WEST CALCASIEU CAMERON HOSPITAL

**HEALTH CO-CHAIR**  
**MATTHEW WELSH**  
WEST CALCASIEU CAMERON HOSPITAL

**HEALTH CO-CHAIR**  
**DEVON HYDE**  
LAKE CHARLES MEMORIAL HEALTH SYSTEMS

**INDUSTRIAL CONTRACTORS CO-CHAIR**  
**JON MANNS**  
RETIRED, AXIALL CORPORATION

**INDUSTRIAL CONTRACTORS CO-CHAIR**  
**GREGORY P THIBODEAUX**  
TURNER INDUSTRIES

**JEFF DAVIS PARISH CHAIR**  
**LORENA CEASAR**  
ENERGY LOUISIANA

**MAJOR INDUSTRIES CHAIR**  
**CURTIS BRESCHER**  
WESTLAKE CORPORATION

**UNION CHAIR**  
**CHUCK BENNETT**  
DISTRICT 5 LOUISIANA AFL-CIO



# LEADING COMPANY

## TOP TWENTY-FIVE

1	<b>WESTLAKE CORPORATION</b> .....	<b>\$757,666</b>
2	CITGO Petroleum Corporation.....	\$742,892
3	Phillips 66.....	\$531,235
4	Turner Industries.....	\$219,974
5	Louisiana Pigment.....	\$132,561
6	Entergy Louisiana, LLC.....	\$121,052
7	Excel Paralubes.....	\$113,434
8	Calcasieu Parish School System.....	\$93,252
9	Rain Carbon, Inc. ....	\$91,722
10	Firestone Polymers, LLC.....	\$78,955
11	GRACE.....	\$78,051
12	LyondellBasell.....	\$77,252
13	Shell Oil Company.....	\$48,684
14	JD Bank.....	\$34,221
15	Chemical Waste Management.....	\$31,655
16	Calcasieu Parish Sheriff's Office.....	\$30,415
17	Alcoa Carbon Products.....	\$27,538
18	CenterPoint Energy.....	\$23,969
19	Capital One.....	\$20,000
20	United Way of Southwest Louisiana.....	\$19,450
21	Ingevity.....	\$17,500
22	Calcasieu Refining Company.....	\$17,402
23	ReCon Management Services, Inc.....	\$16,806
24	Polaris Engineering.....	\$15,568
25	PPG Industries.....	\$15,336

## TREMENDOUS TWENTY

1	<b>UNITED WAY OF SOUTHWEST LOUISIANA</b> .....	<b>\$1,945</b>
2	Rain Carbon, Inc. ....	\$815
3	Polaris Engineering.....	\$677
4	CITGO Petroleum Corporation.....	\$625
5	Excel Paralubes.....	\$496
6	Chemical Waste Management.....	\$364
7	LyondellBasell.....	\$358
8	First National Bank of Louisiana.....	\$357
9	CenterPoint Energy.....	\$325
10	Westlake Corporation.....	\$290
11	Firestone Polymers, LLC.....	\$242
12	Phillips 66.....	\$241
13	Big Brothers Big Sisters of SWLA, Inc. ....	\$231
14	Louisiana Pigment.....	\$220
15	Calcasieu Parish District Attorney's Office.....	\$159
16	Alcoa Carbon Products.....	\$154
17	Lakeside Bank.....	\$152
18	Calcasieu Refining Company.....	\$143
19	Entergy Louisiana, LLC.....	\$139
20	Acadian Ambulance Services.....	\$131

## TOP LEADERSHIP GIVERS

1	<b>CITGO PETROLEUM CORPORATION</b> .....	<b>478</b>
2	Westlake Corporation.....	318
3	Phillips 66.....	62
4	Turner Industries.....	66
5	Rain Carbon, Inc. ....	26
6	Firestone Polymers, LLC.....	24
7	Chemical Waste Management.....	18

To ensure the healthy development and learning potential of our youngest children, we emphasize the importance of early childhood education and learning before kindergarten. We advocate for more investment in and increased access to high quality learning centers for ALICE families who are the backbone of our economy.

# EMPLOYEE RECOGNITION AWARDS

## ALEXIS DE TOCQUEVILLE MEMBERS

### INDIVIDUALS

Mildred Terry Blocker

### RAYMOND JAMES

Daren Pippio, **W**

## FLEUR DE LIS CLUB MEMBERS

### BEAUREGARD HEALTH SYSTEM

Traci Thibodeaux

### CITGO

8 Donors

### ENERGY TRANSFER EQUITY

Perry Moreau

### EXXONMOBIL

Michael Kline

### PHILLIPS 66

Nikole Walston

### WESTLAKE CORPORATION

Carmilite Miles

### INDIVIDUALS

Mary Sue Lanier

## LAGNIAPPE CLUB MEMBERS

### ALFRED PALMA, INC.

Alfred Palma

### CALCASIEU PARISH POLICE JURY

Tara Ross, **W**

### CALCASIEU REFINING COMPANY

Russ Willmon

### CITGO

38 Donors

### EXXONMOBIL

Tricia Delaney

### FIRESTONE POLYMERS, LLC

Donald Pickle

Greg Defrates

Marie Hawkins

Ronnie & Gwendolyn Ringo

### GRACE

1 Donor

### LOUISIANA PIGMENT

Byron Romine

### LYONDELLBASELL

James Guynes

### NATIONWIDE INSURANCE

Laura King

### PHILLIPS 66

Andrew Sona

Ashley Riddick

Bonnie Brawner

Cassandra Thevis

Chandra Guillory

Christopher Ebersole

Clayton Savant

Creshaundra Peterson

Darin Grandfield

Darrien Jackson

David Roeder

Deanna Jimney

Dorothy Meyers

Erin Strang

Gabriella Bergeron

Garrett Stein

Jacob Hewson

Jason Glass

Jeanne Cormier

Jim Baron

Jolie Rhinehart, **B**

Karalee Wolfe

Karen Hardy

Katie Burgett

Kevin Sandstead

Kevin Thompson

Lajeane Blanchette

Lisa Bourque

Megan Hartman, **W**

Monica Collins

Monique Holland

Nichole Wainwright

Robert Trahan

Ronald Tower

Tammy Bilbo-Palms

TJ Ellzey

Tressie Conde Parker

Tricia Rapp

Victor Diaz

### POLARIS ENGINEERING

Gerry & Margaret Obluda

Lee Zimmermann

Mike & Connie Nodier

### RAIN CARBON, INC.

Bryan & Jamie Crochet

Leona Fletcher, **B, W**

### RECON MANAGEMENT SERVICES, INC.

Kourtney Hoffpauir

Roger Boyette

### UNITED WAY OF SOUTHWEST LOUISIANA

Denise Durel, **W**

Laurie & Chip Martin, **W**

Sarina Clooney, **W**

Tami Chrisope, **W**

### INDIVIDUALS

Bradley Dennison

Jeff Weeks

## PILLARS CLUB MEMBERS

### ACADIAN AMBULANCE SERVICES

Casey Lewis

Keith Fults

William Vincent, Jr.

### ALCOA CARBON PRODUCTS

Damon Duplechian

Patrick Crisostomo

Roman Garcia

### BIG BROTHERS BIG SISTERS OF SWLA

Erin Davison, **W**

### CALCASIEU PARISH ASSESSOR'S OFFICE

Wendy Aguilard

### CALCASIEU PARISH POLICE JURY

Felicia Davis

### CALCASIEU PARISH SCHOOL SYSTEM

Kacie Pugh

### CALCASIEU REFINING COMPANY

Adam Judice

### CHEMICAL WASTE MANAGEMENT

Anthony Manuel

Clint Longnion

David Michaelis

Floyd Mitchell, **B**

George Coward, Jr.

Janet Doan

Joel Vincent

Kenny Berwick

Kristin Leger

Lance Sharbino

Leland Young

Marcus Lafanette

Paige Authement

Scott Caraway

Travis Harmon

Troy Comeaux

Wyman Deville

Zackary Quain

### CITGO

355 Donors

## PILLARS CLUB MEMBERS

### ENTERGY LOUISIANA, LLC

Donald Northcutt  
Lorena Ceasar, **W**  
2 Donors

### EXCEL PARALUBES

Daniel Fontenot  
Monica Sanders-Hidalgo  
15 Donors

### EXXONMOBIL

Christine Cobb  
Jessica Franquiz  
Joshua Hindmon  
Nathan Markham

### FIRESTONE POLYMERS, LLC.

Danny Guidry  
Dexter Griffin  
Eric Felice  
Glenn Corbello  
Jereme Smith  
Jerry Bonvillain  
Karen Bernard  
Kelvin Naylor  
Kendall Thornhill  
Kenneth Chaisson  
Kenneth Moreland, II  
Marcia Bankens  
Michael Poullard  
Michael Walls  
Ricky Landry  
Rob Blount  
Stephanie Thompson  
William Ellison  
William Gross

### FIRST FEDERAL BANK OF LOUISIANA

Steven Landry

### FIRST NATIONAL BANK OF LOUISIANA

Roxanna Mize

### FUERST, CARRIER & OGDEN LLC

Randy Fuerst

### GRACE

8 Donors

### JD BANK

Bruce Elder  
Lisa Johnson  
Sara Huval

### KIEWIT INFRASTRUCTURE COMPANY

Randal Russ

### LOUISIANA PIGMENT

Becky & Dens Darbonne  
Bryan Taylor  
Chris & Dr. Toby Osburn  
James Thompson  
John Dixon  
Quentin Busby  
Troy Cormier

### LOUISIANA STATE TROOPERS - TROOP D

Sgt. James Anderson

### LYONDELLBASELL

Ava Leblanc  
Charln Stewart  
David Nixon  
Doug Mayo  
Greg Gray  
John Beough, Jr.  
Johnathan Simien  
Keith Faul, **B**  
Leo Bourgeois III  
Sarah Doucet

### PHILLIPS 66

Alberto Maxwell III  
Bennie Moore  
Bettie Morgan, **W**  
Bryan Jordan  
Carl Guidrey  
Carlos Marciano  
Clint Fontenot  
Damone Barker  
David Cudd  
David Williams  
Dustin Taylor  
Eric Ecter  
James Bobo  
Jeffery McRae  
Joseph Churchman  
Lyndsay Noble  
Michael Orgeron  
Olufunso Talabi  
Ronald Tower  
Tammie Pettis  
Terry Wilson  
Tichelle Mitchell  
Yukki LeDay Lewis

### POLARIS ENGINEERING

Bob Chandler  
Kenneth Gilbert  
Kenneth Murders

Michael Fibich  
Michael Newell, Jr.  
R. J. Chandler

### PPG INDUSTRIES

Billy Almanza  
Billy Fuselier  
Butch Davis  
David Ritchie  
Glenda Bryant  
Jessie Waller  
Joseph Victorian  
Lisa Turner  
Lyndee Brassieur  
Rachel Johnson  
Ronnie Grace  
Sherwood Anderson  
Steven O'Keefe

### PROJECT BUILD A FUTURE

Charla Blake, **W**

### RAIN CARBON, INC.

Abraham McCleon III  
Benjamin Daniels  
Bryan & Chelsea Foster  
Cody Spears  
Douglas Johnson  
Glenn Duhon  
Grant LaComb  
Heather Riche, **W**  
Herman Malveaux  
Ivan Martin  
Jacob Daniel  
Jeremy Istre  
John & Ginger Simon  
Justin & Marsha Mouser  
LaBron Blunt  
Mark Smith  
Mark Stewart  
Marvin & Anquetta Lubin, **W**  
Michael Hopper  
Nicholas Dietz  
Robert Hazell  
Scott See  
Thaddeus Hoffpauir  
Willie Vital, Jr.

### RECON MANAGEMENT SERVICES, INC.

Bill Art  
John Leibee

### SHELL OIL COMPANY

Arianna Rios  
D'Andra Creer  
Frederick Palmer  
Michael High

Rhoman Hardy

### TURNER INDUSTRIES

66 Donors

### UNITED WAY OF SOUTHWEST LOUISIANA

Becky Ainsworth, **W**  
Catherine & Blake Thevenot, **W**  
Jennifer Dimas, **W**

### WEST CALCASIEU CAMERON HOSPITAL

Janie & Ed Fruge', **W**

### WESTLAKE CORPORATION

Aaron Guillory  
Alexia Hines  
Allen Marceaux  
Amy Gomez Pardo  
Andrea Sonnier  
Andrew Schmitt  
Andrew Sonnier  
Andrew Wilson  
Angie Ellender  
Anthony Dobson  
Anthony Hantz  
Arvin Beard  
Ashley Kardish, **W**  
Barbara Downer  
Barry Willie  
Benjamin Drone  
Benji Istre  
Beverly Nolen  
Billy Kingrey, II  
Blaine Wilken  
Blake Juranka  
Blake Rhodes  
Blake Vidrine  
Bobby Bufford  
Bobby Welch  
Bonner Caton  
Bradford Patin  
Brandon Brock  
Brandon Broussard  
Brandon Green  
Brandon Jean  
Brandon Landry  
Brennan Manuel  
Brian Jordan  
Brian Reeves  
Brittany Boone  
Broc Corbello  
Bryan Plauche  
Bryon Derouen  
Carl Wilburn  
Carl Williams

Carleen Barker  
Celeste Lewis  
Chad Dore'  
Charles Cabbage  
Charles Fox  
Charles Vinson  
Charlie Maddox  
Chaz Oubre  
Cheri Ardoin  
Christopher Bellon  
Christopher Cotten  
Christopher Gary  
Christopher Matte  
Christopher Tumey  
Clarence Doucett  
Clayton Mitchell  
Clement Bellow  
Cody Fenetz  
Cody Gantt  
Cody Vincent  
Colleen Couvillon  
Corey Crosby  
Cory Broussard  
Cory Nelands  
Craig Fontenot  
Craig Perkins  
Crystal Rougeau  
Curtis Brescher, **B**  
Dale Smith  
Damon Broussard  
Daniel Dupre  
Danny Kingham  
Daren Comeaux  
Darrell Dugas  
Darryl Thibodeaux  
David Boyette  
David Hamilla  
David Heddings  
David Martin  
David Urdiales  
DeAnn Kibodeaux  
Chapman  
Deborah Hatsfelt  
Delton Menard  
Dennis Daniels  
Derrick Nolan  
Dietrich Thomas  
Donald Johnson  
Donald Johnson  
Donna Allen  
Donna LeLeux  
Dorothy Waller  
Duane Fontenot  
Eddie White  
Emma Sykes  
Ethan Byrd  
Farrah Jones  
Field LaMotte  
Frank Rozas

## PILLARS CLUB MEMBERS

Frederick Roach III  
George Foster  
Gerry Brooks  
Gino Lubrano  
Greg Russell  
Gregory Guillory Jr.  
Grizelle Brunet  
Hannah Goodwin  
Harry Hank  
Harvey Williams Jr  
Hershel Jordan  
Hilton Soileau  
Hunter Lewis  
Jake Burr  
James Chambers  
James Cheever  
James Doucet  
James Riley  
Janice Joubert  
Jarell Richard  
Jason Johnson  
Jayde Butler  
Jeffrey Groves  
Jeffrey Patton  
Jeffrey Robbins  
Jennifer Robart  
Jerrold Smith  
Jerry Broussard  
Jim Wyche, III  
Joanne Sovereign  
Joe Andrepont  
Joel Baus  
Joeseeph Holcombe  
John Andracki  
John Bowman  
John Leger  
John Niles  
John Wood  
Johnny Duhon  
Johnny Morgan  
Jon Maxie  
Jonathan Potter  
Joseph Fontenot  
Joseph Gilland  
Joseph Haiko  
Joseph Knight  
Joseph Trosclair  
Joshua Bollich  
Joshua Ducat  
Joshua Fontenot  
Joshua Thomson  
Joycelyn LeCompte  
Justin Breaux  
Kane Ward  
Kareem Anthony  
Karrie Vining  
Kay Landry  
Keith Habetz  
Keith Perkins

Kelsey Reeves  
Kenneth Elkins  
Kenneth Landry  
Kenneth Moser  
Kevin Lavergne  
Kevin Miller  
Khalid Taha  
Kimberlee Palermo  
Kirk Johnson  
Kobi Richard  
Kyle Fontenot  
LaDonna Randle  
Larry Groves  
Lawrence Joiner  
La'Techa Landry  
Leah Weaver  
Lester McClelland  
Louis Rochester  
Luis Siso  
Marcie Michalko, **W**  
Marcus Heurtevant  
Marie Perry  
Mark Covert  
Mark Rumery  
Marlon Collins  
Marvin White  
Marvis Collor  
Matthew Wright  
Maureen Contreras  
Megan Juranka  
Mavel Campbell  
Melvin Cosey  
Michael Guidry  
Michael Kramer  
Michael Love  
Michael Vincent  
Michael Williams  
Michele Taylor  
Michelle Buller  
Michelle Frazer  
Nathan Folse Jr  
Nathaniel Johnson  
Nathaniel Tilton  
Neil Boaz  
Nicholas Melancon  
Nicole Allen  
Noel Serice  
Pat Sullivan  
Patrick Manard  
Patty Dommert  
Paul Lagarosse  
Paula McCain  
Quentin Lewis  
Quintin Guidry  
Randy Nortman  
Ray Taylor  
Rhon Pappion  
Ricardo Parra  
Richard Boeing

Richard Clark  
Ricky Gaspard  
Ricky Mouton  
Rico Orsot  
Robbin Lamb  
Robert Barfield  
Robert Bennett  
Robert Brittain  
Robert Collins  
Robert Craft  
Robert Dyer  
Robert Handy  
Robert Lequeux  
Robert McGee  
Robert Pinter  
Robert Reed  
Robert Sharpton  
Robin Forman  
Rocky Deroche  
Rodney Ceasar  
Rodney Trahan  
Roman Ryder  
Ronald Gibbs  
Rose Williams  
Ross Moody  
Ross Starks  
Roy Coniglio  
Ruby Young  
Ryan Hill  
Sabrina Devillier  
Sarah Donahe  
Scott Hall  
Scotty Darbonne  
Scotty Harwell  
Sean Bourque  
Shane Chauvin  
Shane Colletta  
Shannon Mestayer  
Shao Tseng  
Shawn Duhon  
Shawna Gatson  
Shelby Hoffpaur  
Sidney Dickey  
Stephanie LeBlanc  
Stephen Ellender  
Steve Rideaux  
Susan Trahan  
Swinford Breaux  
Tanya Gibson  
Tara Poole  
Tarsha Sias-Broussard  
Terry Nortman  
Thad Little  
Thomas Trahan  
Tiffany Owen  
Timothy Farnum  
Timothy Griffen  
Toby Darbonne  
Todd Fontenot

Todd Honeycutt  
Tomas Bechtold  
Tomi-Jayne Ridings  
Tommy Benoit  
Trisha Mier  
Troy Irwin  
Virginia Busby  
Walter Williams  
Warren LeJeune  
Wayne Ahrens  
Weldon Terro  
Wesley Treme  
William Eaves  
William Goulet  
William Griffith  
William Pope  
Winfield Pitt

## INDIVIDUALS

Anthony Urbani  
Arno Basson  
J. T. Milford, Jr.  
Julius Cain  
Patricia Prebula, **B, W**  
Temd Deason  
Terry Ledford

# COMMUNITY INVESTMENT CHAIR

KEITH FAUL

LYONDELLBASELL

I am proud to have served as the Community Investment Chair at United Way of Southwest Louisiana for another year. I take very seriously my duty to shepherd donor dollars and ensure they serve the community members in a way that meets our mission.

United Way of Southwest Louisiana is more than just meeting the needs of individuals and families, they are changing the tide of their lives for the long-term. When someone can get a temporary gap filled, but at the same time get to the root of why that gap exists, then fill it, they can be made whole. This lifts people up and allows them the pride everyone deserves.



*Keith Faul*

# COMMUNITY INVESTMENT COMMITTEE

**NADINE BLAKE**  
REGION 5 OFFICE OF PUBLIC HEALTH

**ERIN CHESNUT**  
BEAUREGARD PARISH LIBRARY

**ADAM FONTENOT**  
SMOKE & BARREL

**EARTHA GUIDRY**  
RETIRED, SEARS

**MARJORIE HARRISON**  
CALCASIEU PARISH PUBLIC LIBRARY

**SCOTT JACKSON**  
LYONDELLBASELL

**PAULA KOONCE**  
WEST CALCASIEU CAMERON HOSPITAL

**JASON MARTINEZ**  
FIRST HORIZON BANK

**LIBBY REMBERT**  
RETIRED

**BEVERLY SCHALON**  
RETIRED, AXIALL CORPORATION

**DALE SMITH**  
RETIRED, PPG/WESTLAKE CORPORATION

**JENNIFER TEMPLET**  
FNB DERIDDER



## CYCLE TO THE PARK

*A collaboration between United Way of Southwest Louisiana, Boys & Girls Club and Partners in Parks produced a day in the park with activities, food, bike safety and free bike helmets.*



# COMMUNITY IMPACT

**B**ASIC  
**N**EEDS

**E**DUCATION

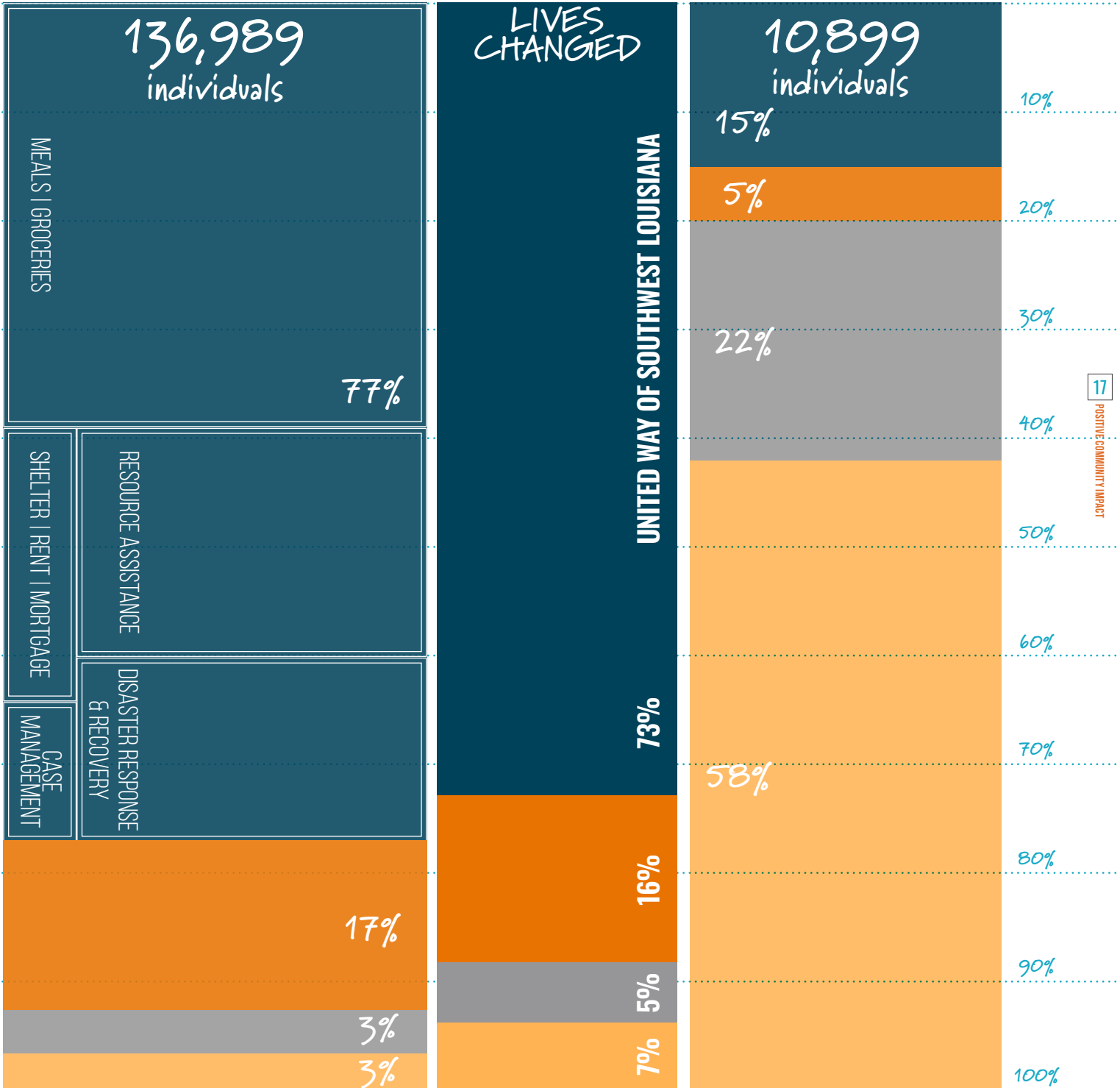
**E**CONOMIC  
**M**OBILITY

**H**EALTH

**93%**  
INITIATIVES & SPECIAL PROJECTS

**147,888**

**7%**  
FUNDED PARTNER AGENCIES



ECONOMIC  
EMOBILITY  
6,875  
LIVES CHANGED



**CAL-PRI  
CALCASIEU PRISONER REENTRY**

211 formerly incarcerated persons assisted

CAL-PRI ENSURES LESS RECIDIVISM AND A SAFER COMMUNITY FOR EVERYONE BY GIVING REENTERING PERSONS THE TOOLS THEY NEED TO FIND WORK, SHELTER AND ALL THE BASIC NECESSITIES REQUIRED EACH DAY



**VITA  
VOLUNTEER INCOME TAX ASSISTANCE**

4,181 income taxes filed

\$4,753,632  
returned to Southwest Louisiana

VOLUNTEERS PREPARED TAXES IN FIVE PARISHES FOR LOW TO MODERATE-INCOME INDIVIDUALS. THE STRESS OF FILING AND THE COST CAN BE CHALLENGING FOR ANYONE.



**VOLUNTEERS**

1,193 volunteers  
9,974 volunteer hours

VOLUNTEERS BECOME IRS-CERTIFIED BY UNITED WAY OF SOUTHWEST LOUISIANA TEAM MEMBERS AT NO COST. THEY CAN USE THE CERTIFICATION ON A RESUME AND FOR FUTURE JOBS. THEY GIVE FAMILIES ACCESS TO VALUABLE TAX CREDITS AND OTHER BENEFITS THAT ARE OFTEN OVERLOOKED.



# EDUCATION

23,238 LIVES CHANGED



## SUMMER OF SERVICE

110 13-18 year olds

1,180 senior citizens benefitted from spending time with youth and from the services the volunteers provided

YOUTH VOLUNTEERS PROVIDED BIRTHDAY PARTIES, PAINTING AND CLEANING OR BINGO CALLING AT ALL SENIOR CENTERS IN CALCASIEU PARISH DURING THE SUMMER



## STUDENT SPACEFLIGHT EXPERIMENTS PROGRAM & NASA SUMMER STEM CAMP

5,238 6-8<sup>th</sup> grade students  
71 NASA scholarships

PROVIDED THE FIRST NASA EXPERIMENTS PROGRAM FOR REGION 5 STUDENTS. PROVIDED THE FLIGHTS FOR WINNING TEAM TO BRING EXPERIMENT TO NASA FLIGHT IN ORLANDO.

PROVIDED SCHOLARSHIPS TO NASA SUMMER STEM CAMP



## LITERACY KITS

1,000 children

EACH KIT CONTAINS AGE APPROPRIATE BOOKS WITH THEMED ACTIVITIES AND A HANDWRITTEN NOTE FROM A VOLUNTEER

*I started handing these out towards the end of the night and every kid had a HUGE smile on their face when they realized they got to keep the book. Thank y'all so much!!!*

Leslea M., teacher at Grand Lake Elementary School

## DOLLY PARTON'S IMAGINATION LIBRARY

3,901 children

UNDER THE AGE OF 5 RECEIVED A BOOK IN THE MAIL EACH MONTH TO START THEIR FIRST LIBRARY

30,462 books in the hands of local children

## BORN LEARNING TRAIL

400 children

KIWANIS CLUB PARTNERSHIP ALLOWED OUR FIRST INSTALLATION OF A BILINGUAL LEARNING TRAIL IN SULPHUR'S MCMURRAY PARK

# HEALTH

## 10,478 LIVES CHANGED

INDIVIDUALS USED OUR  
TEEN TEXT, CRISIS CHAT OR CRISIS LINE  
1,432 HELPED



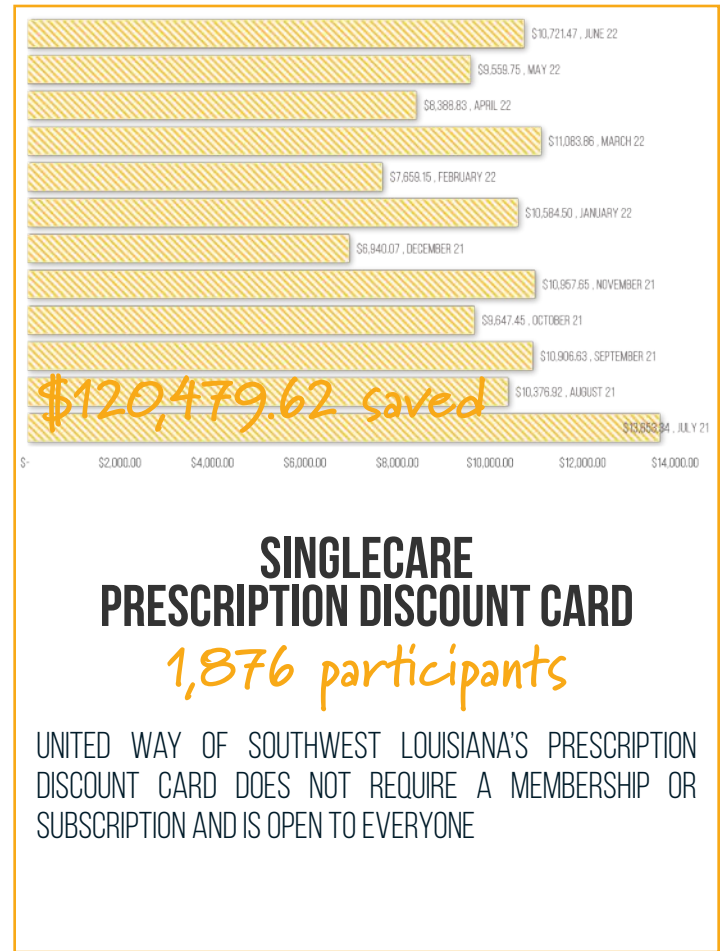
United Way of Southwest Louisiana is co-hosting a virtual event titled Understanding Human Trafficking: The Intersections and Complexities 3-4 p.m. Wednesday, March 16. The session is free and public, but

Dear Dr. Roach: I have had several incidents over the past year or two of nocturnal

United Way to present live learning session on trafficking March 16

explains Denise Durel, president and CEO of United Way of Southwest Louisiana. "We need to recognize the signs and become unified in a strategy to combat it."

Registration for this live learning session is required. The link can be found on United Way of Southwest Louisiana's social media here at unitedw



## UNITED AGAINST HUMAN TRAFFICKING

### 110 participants

UNITED WAY OF SOUTHWEST LOUISIANA IS A FOUNDING MEMBER OF SWLA HUMAN TRAFFICKING TASK FORCE SO IT WAS ONLY NATURAL FOR THE TEAM TO HOLD THE MEETINGS AND BE THE STARTING POINT FOR UNITED AGAINST HUMAN TRAFFICKING

## SINGLECARE PRESCRIPTION DISCOUNT CARD

### 1,876 participants

UNITED WAY OF SOUTHWEST LOUISIANA'S PRESCRIPTION DISCOUNT CARD DOES NOT REQUIRE A MEMBERSHIP OR SUBSCRIPTION AND IS OPEN TO EVERYONE

## CYCLE TO THE PARK

### 235 children supplied with new bike helmets

UNITED WAY OF SOUTHWEST LOUISIANA PARTNERED WITH BOYS AND GIRLS CLUB AND THE CITY OF LAKE CHARLES TO PLAN CYCLE TO THE PARK. BIKE HELMETS WERE GIVEN TO EACH CHILD THAT LEARNED BIKE SAFETY. FOOD, TRAIN RIDES, JUMPS AND OTHER ACTIVITIES HAPPENED ALL DAY



# BASIC NEEDS

## 107,297 LIVES CHANGED



Rick Hickman/American Press  
 Neese cheerleaders keep the crowd entertained during a break in the action at Thursday night's home game against Nicholls State.

United Way, partners provided 623 with shelter the weekend of Jan. 21.

"We were overwhelmed with applications in a 24-hour period," explains Denise Durel, president and CEO for United Way of Southwest Louisiana. "We received 672 requests and a majority of them are local families still living in poor conditions following Hurricane Laura."

Charles and were sheltered in ten different local hotels with vacancies. In total, 238 rooms were rented with a total of 659 nights paid for by the four partners. "St. Michael's called after seeing what we were trying to do and offered to join us," says Durel. "Our team of casework-

## 211

### 25,739 callers assisted

UNITED WAY OF SOUTHWEST LOUISIANA'S 211 RESOURCE HELP LINE IS MORE THAN JUST A LIFELINE FOR COMMUNITY MEMBERS TO FIND CRITICAL ASSISTANCE. IT GIVES IMPORTANT DATA ABOUT NEEDS IN EVERY CORNER OF OUR REGION SO RESOURCE ALLOCATION CAN BE SWIFT AND ACCURATE. THE TOP 3 NEEDS CONTINUE TO BE:

1. shelter
2. utility assistance
3. food

## SHELTER

### 2,743 sheltered

UNITED WAY OF SOUTHWEST LOUISIANA FUNDED SHELTER FOR FAMILIES AND INDIVIDUALS DURING WEATHER EXTREMES.

MANY IN SOUTHWEST LOUISIANA CONTINUE TO LIVE WITH HOMES IN DISREPAIR AND CANNOT SUSTAIN COLD WINTER WEATHER OR EXTREME HEAT IN SUMMER.



## HUNGER

### 866,164 meals served

UNITED WAY OF SOUTHWEST LOUISIANA AND FUNDED PARTNERS CONTINUE TO ADDRESS THE NEED FOR FOOD IN EACH REGION OF THE COMMUNITY THROUGH A VARIETY OF INITIATIVES AND FOOD PANTRIES

### UNITED AGAINST CHILD HUNGER

#### 6,000 children served

*Thank you very much for your support!  
 After COVID started my job status changed. We were going thru bad times and more after 2 hurricanes, your support after all going on was crucial to us .*

PATTY L. | HURRICANE RELIEF CENTER VISITOR

# partner agencies

Abraham's Tent  
Assist Agency  
Beauregard ARC  
Beauregard Community Concerns  
Beauregard Council on Aging  
Big Brothers Big Sisters of SWLA  
Calcasieu Community Clinic  
Calcasieu Council on Aging  
Catholic Charities of SWLA  
Family & Youth Counseling Agency  
Girl Scouts of LA - Pines to the Gulf  
Girlie Girls Mentoring Program  
Jeff Davis CADA  
Junior Achievement of SWLA

Literacy Council of SWLA  
McNeese - Kay Dore Counseling Clinic  
Merryville Community Health Center  
Oasis a Safe Haven  
Project Build a Future  
Salvation Army  
Second Harvest Food Bank  
Southwest Louisiana Youth Foundation  
St. Nicholas Center for Children  
SWLA Center for Health Services  
The Boys & Girls Club of Acadiana  
The Children's Museum of SWLA  
Volunteers of America

# volunteers



Our community has faced extraordinary challenges these last few years, from pandemic-related shortages to devastating natural disasters. When our community has needed us most, no matter the situation, United Way answered the call.

Together, we work to create opportunities for individuals and families to thrive and to achieve what every family wants: a pathway to self-sufficiency and a sustainable quality of life.

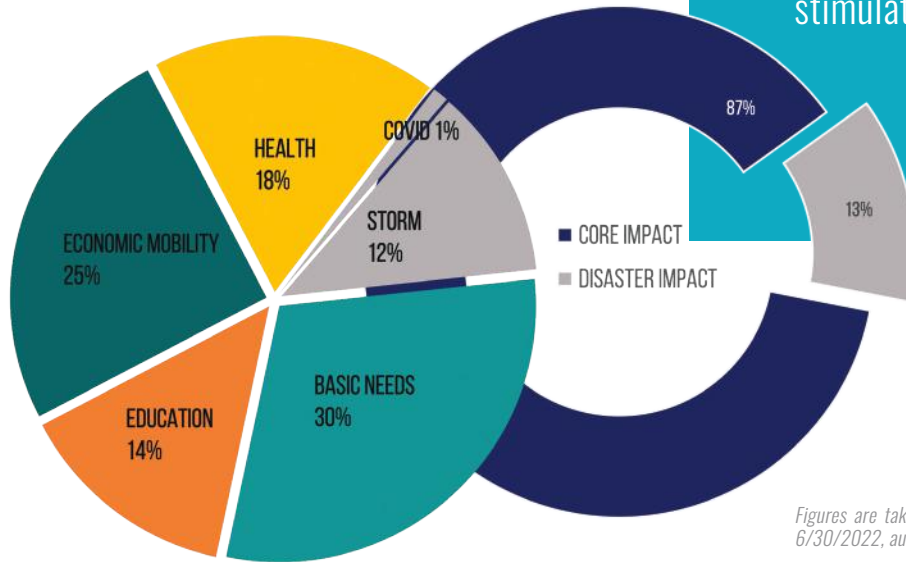


# DISTRIBUTIONS

July 2021 - June 2022

COMMUNITY INVESTMENT.....	\$3,569,647.00
CORE IMPACT .....	\$3,082,169.63
DISASTER IMPACT .....	\$487,477.37
CENTRAL SERVICES.....	\$976,836.00
TOTAL.....	\$4,546,483.00

We are proud to be the oldest nonprofit member of the Southwest Louisiana Economic Development Alliance. Supporting our ability to provide a safety net for our neighbors and friends while we help them achieve long-term financial stability and success also stimulates the economy.



Figures are taken from the Financial Statements for year ended 6/30/2022, audited by Steven M. DeRouen Associates CPAs.

# INVESTMENT COMMITTEE

## INVESTMENT CHAIR

**KEVIN LACY**  
INVESTAR BANK

**BARRY BROWN**  
RED RIVER BANK

**BLAKE MCCASKILL**  
FIRST NATIONAL BANK OF LOUISIANA

**HARRY HANK**  
RETIRED, PPG INDUSTRIES

**KIRK PELLERIN**  
SABINE STATE BANK

**ROXANNA MIZE**  
RETIRED, FIRST NATIONAL BANK OF LOUISIANA

**TONY HULSEY**  
RETIRED, JD BANK





SPECIAL PROJECTS OUR INITIATIVES

**BASIC NEEDS**

211 | 898-211  
SWLA VOAD  
The Path Home  
United Against Child Hunger  
Build Back the Block

**EDUCATION**

Dolly Parton's Imagination Library  
WriteStart Project  
Literacy Kits  
Born Learning Trail  
Summer of Service

**HEALTH**

833.TXT.TEEN  
Crisis Chat Online  
Singlecare Prescription Discount Program  
United Against Human Trafficking

**ECONOMIC MOBILITY**

Volunteer Income Tax Assistance (VITA)  
Calcasieu Prisoner Reentry Program (CAL-PRI)  
Matched Savings Program  
Bank On SWLA

**ALICE**

Asset Limited, Income Constrained, Employed

**CASE MANAGEMENT PORTFOLIO**

Emergency Rental Assistance Program (CPPJ)  
Power To Care (Entergy La)  
Emergency Food & Shelter Program (FEMA)  
Temporary Assistance For Needy Families (DCFS)

**EVENTS**

Smoke & Barrel  
Battle for the Paddle  
Rum Revival  
Reelin' For Veterans Fishing Tournament  
La Food & Wine Festival  
SOLA Giving Day  
Day of Giving  
**United Way of Southwest Louisiana Volunteer Forces**  
Disaster Response Specialist  
Literacy Kit Assembly  
In-Office Assistance  
Summer of Service Youth Forces  
Summer of Service Adult Forces  
VITA IRS-Certified Preparers  
Fannie Mae Specialists

VOLUNTEER

**UNITEDWAYSWLA.ORG**

facebook.com/unitedwayofswla

@unitedwayswla

@unitedwayofswla

youtube.com/unitedwayofswla

linkedin.com/unitedwayswla

