

Northwestern
ALUMNI ASSOCIATION

FEBRUARY 11-22, 2025

with optional
Rwanda Pre-Tour and
Zanzibar Post-Tour

TANZANIA WILDLIFE SAFARI

Orbridge



Dear Northwestern University alumni and friends,

Join us on a transformative wildlife safari through the heart of East Africa, backdrop to the year-round migration of grazing herbivores that traverse the Serengeti Plains. With exceptional access to Tanzania's game parks, you'll witness spectacular wildlife, colorful local traditions, and endless sun-drenched savannas during this epic 12-day journey.

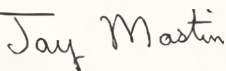
Trekking with expert naturalist guides in 4x4 Land Cruisers through breathtaking terrain, you may encounter the Big Five (lions, leopards, elephants, rhinos, and buffaloes), plus cheetahs, wildebeests, zebras, primates, gazelles, and countless species of birds.

After each day of exhilarating adventure, you'll retreat to premium lodges and tented camps, all offering exceptional hospitality and superior amenities.

Space is limited to just 24 guests. With significant savings of more than \$1,000 per couple, we anticipate this tour will fill quickly, so be sure to reserve your spot today. Please share this brochure with family and friends who may be interested in traveling with you.

To reserve, visit northwestern.orbridge.com, call 866-639-0079, or return the attached reservation form.

Sincerely,



Jay Mastin '10 MS
Director, Alumni Engagement
Northwestern Alumni Association

Important information regarding COVID-19

The guiding principle of the Northwestern Alumni Association (NAA) is to provide safe and enjoyable experiences for all alumni and friends participating in our programs. We adhere to guidance from the US Centers for Disease Control and Prevention, local health authorities, and Northwestern University.

For our alumni travel program, we partner with vendors who coordinate activities and accommodations. Please note that the NAA is not responsible for trips canceled by third-party vendors or any illnesses or quarantines that may occur during trips. We strongly urge all travelers to be fully vaccinated, be tested for COVID-19 before departing, and purchase travel insurance at the level of coverage that is right for them.



Tanzania Wildlife Safari | Itinerary and Highlights (subject to change)

Locations selected for this safari promise excellent viewing of wildlife, however, spotting specific wildlife cannot be guaranteed. Some activities are dependent on weather and seasonal conditions.

Day 1: EN ROUTE FROM U.S.

Day 2: ARRIVE IN ARUSHA, TANZANIA An Orbridge representative will be waiting to assist with your transfer to the hotel. Overnight: Rivertrees Country Inn

Days 3-4: TARANGIRE NATIONAL PARK Morning and afternoon game drives provide your introduction to Africa's natural beauty and wonder. Between game drives gather for a bush lunch inside the park. Lodging is inside the park, where you again may encounter elephants strolling the grounds. Overnight: Tarangire Sopa Lodge (B,L,D daily)

Day 5: NGORONGORO CONSERVATION AREA Enjoy a morning game drive before a farm walk and lunch at Gibb's Farm. Take advantage of hands-on experiences, including harvesting vegetables, milking cows, feeding pigs and collecting eggs. Overnight: Ngorongoro O'Ideani Mountain Lodge (B,L,D)

Day 6: NGORONGORO CRATER Explore this UNESCO World Heritage Site and one of the seven natural wonders of Africa. During a riveting full-day game drive, spot for the Big Five and other species like wildebeest and flamingos. Overnight: Ngorongoro O'Ideani Mountain Lodge (B,L,D)

Days 7-8: OLDUVAI GORGE | SERENGETI NATIONAL PARK – SERONERA VALLEY Glimpse into the origins of humanity at Olduvai Gorge, one of the most important prehistoric archaeological sites on Earth. Daily morning and afternoon game drives through awe-inspiring landscapes of the Serengeti offer exhilarating opportunities to witness a plethora of grazing animals. Overnight: Ole Serai Luxury Camps – Moru Kopjes (B,L,D daily)

Days 9-10: WESTERN SERENGETI | GRUMETI The Serengeti's relatively narrow corridor consists of open savannas, woodlands and floodplains. Daily morning and afternoon game drives afford additional opportunities to learn about these reserves and their diversity of bird and mammal species. Overnight: Mbalageti Serengeti Tented Chalets (B,L,D daily)

Day 11: SERENGETI | FLIGHT TO ARUSHA | DEPART FOR U.S. Day rooms are available at the hotel in Arusha before evening flights home. Day Room: Rivertrees Country Inn (B,L)

Day 12: EN ROUTE | ARRIVE IN U.S.
(B = Breakfast, L = Lunch, D = Dinner)



Serengeti Sunrise Safari

While in Serengeti National Park (days 7-8), take a once-in-a-lifetime sunrise safari by hot air balloon. During this optional excursion, ascend above the southern Serengeti at dawn for an exclusive, birds-eye view of wildlife roaming the expansive landscape.

Afterward enjoy a champagne breakfast plus a game drive before rejoining the group.

This excursion must be purchased from Orbridge Guest Services in advance to guarantee availability. Purchase is non-refundable inside 90 days from departure.



What's Included

- 9 nights deluxe accommodations carefully selected to maximize wildlife viewing and comfort
- Access to a day room on departure day
- 9 breakfasts, 9 lunches and 8 dinners including a special farewell Serengeti bush dinner
- Expert naturalist guides throughout including an Orbridge Expedition Leader
- Daily game drives in custom 4x4 Land Cruisers with roof hatch access and guaranteed window seating
- Coffee and tea with meals and filtered water on game drives
- Internal flight from the Serengeti to Arusha
- All main program gratuities
- All taxes, service charges and park fees
- Temporary membership in Flying Doctors Service
- Airport transfers for guests arriving and departing on suggested flights



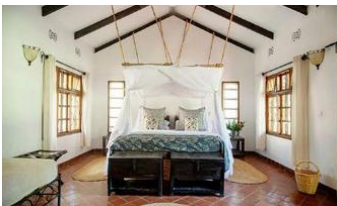
Activity Level: This safari tour requires an ability to walk safely over uneven and slippery ground without assistance, transport luggage a short distance, get in and out of a 4x4 Land Cruiser and physically tolerate vehicle motion on oftentimes bumpy Serengeti roads.



Accommodations *(subject to change)*

RIVERTREES COUNTRY INN

Settle into this charming country estate situated within 10 acres of fertile greenery. The grounds are a natural extension of Mt. Meru's sloping foothills.



TARANGIRE SOPA LODGE

Enjoy outstanding accommodations amidst a gorgeous landscape. Amenities include an outdoor pool, centrally located common room, bar and lounge and outdoor terrace.



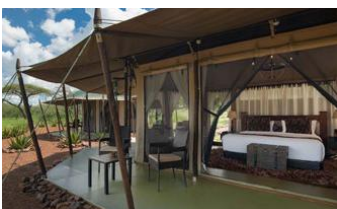
NGORONGORO O'LDEANI MOUNTAIN LODGE

Relax amidst this five-star colonial lodge situated on a picturesque hill with spectacular views of Oldeani Mountain and the Ngorongoro Crater Rim.



OLE SERAI LUXURY CAMPS – MORU KOPJES

This luxury camp is ideally located within the Central Seronera area of Serengeti National Park.



MBALAGETI SERENGETI TENTED CHALETs

This property offers a breathtaking 360-degree panoramic view of the Serengeti Plain, comfortable and well-appointed rooms, and a refreshing pool.



Optional Pre-Tour Rwanda

Search for the gorillas that traverse the Virunga Mountains for the heart-pounding thrill of observing these giants in their natural habitat.



Day +1: EN ROUTE FROM U.S.

Day +2: ARRIVE IN KIGALI, RWANDA Meet your host and transfer to the hotel for a restful evening.
Overnight: Kigali Marriott Hotel

Day +3: KIGALI | KINIGI Morning sightseeing today includes a tour of the Genocide Museum. Enjoy lunch in Kigali before the drive to the Mountain Gorilla View Lodge where you can rest and prepare for tomorrow morning's trek.
Overnight: Mountain Gorilla View Lodge (B,L,D)

Day +4: KINIGI | VOLCANOES NATIONAL PARK | MORNING GORILLA TREK | KIGALI After an early breakfast, set out for mountain gorilla trekking in Volcanoes National Park. Encountering these amazing animals up close is a life-changing experience. National park guides will lead you through the thick forest in search of one of the habituated gorilla families that traverse the Virunga Mountains. Upon finding the group, we will have one hour to observe and capture remarkable photographs.
Overnight: Kigali Marriott Hotel (B,L,D)

Day +5: KIGALI | FLIGHT TO ARUSHA | MAIN PROGRAM BEGINS After breakfast take the group flight to Arusha to join fellow travelers for the main program. (B)

Activity Level: Guests should be in very good physical condition with the ability to walk up and down hills in tropical forests on uneven, sometimes rocky, steep and/or slippery, terrain. The forest can be humid and paths may have heavy vegetation.

What's Included

- 2 nights hotel accommodations in Kigali
- 1 night at Mountain Gorilla View Lodge (or similar)
- 3 breakfasts, 2 lunches and 2 dinners
- Excursion transportation, all park fees and one gorilla trek permit
- Temporary membership in the Flying Doctors Service
- Airport transfer for guests arriving on the suggested flight
- Internal airfare from Kigali to Arusha for the main program



Optional Post-Tour Zanzibar

Known as Spice Island and overflowing with influences from Africa, Arabia, India, and Europe, Zanzibar is a fascinating destination with a dramatic history, endless coastlines, and a magical atmosphere.

Day 11: **FLIGHT FROM ARUSHA TO ZANZIBAR** After the main program flight from the Serengeti Grumeti airstrip to Arusha, board the quick flight to Zanzibar—the Spice Island.
Overnight: Zanzibar Serena Hotel (L,D)

Day 12: **ZANZIBAR | JOZANI CHWAKA BAY NATIONAL PARK** After breakfast set out on a walking tour of Zanzibar's old town, Stone Town—a UNESCO World Heritage Site—and its market. Visit the House of Wonders, which displays exhibitions dedicated to Swahili culture, as well as the Palace Museum, highlighting its ties to Zanzibar's Omani history. At the Zanzibar Old Fort, discover the fortification's colorful history, from its development in 1698 to how the structure is still being occupied today. After lunch travel across the island through quaint villages and lush vegetation to enchanting Jozani Chwaka Bay National Park—the only national park in Zanzibar and home to the unique red colobus monkey. Enjoy time to explore the forest before returning to the hotel for dinner.
Overnight: Zanzibar Serena Hotel (B,D)

Day 13: **ZANZIBAR | OPTIONAL SPICE PLANTATION TOUR / DEPART FOR U.S.** The morning is at leisure. Depending on departing flight times, you may choose to join the optional spice tour excursion. (*Purchase in advance from our Orbridge Guest Services. Reserve early for best availability as space is limited.*) Relax in the day room at the hotel until taking the complimentary transfer to Abeid Amani Karume International Airport for flights home.
Day Room: Zanzibar Serena Hotel (B,L)

Day 14: **EN ROUTE | ARRIVE IN U.S.**

What's Included

- Internal airfare from Arusha to Zanzibar
- 2 nights at Zanzibar Serena Hotel (or similar) plus a day room on departure day
- 2 breakfasts, 2 lunches and 2 dinners
- Guided panoramic city tour
- Admission to the House of Wonders, the Palace Museum and Jozani Chwaka Bay National Park
- All excursion transportation
- Airport transfer for guests departing at the suggested times



TANZANIA WILDLIFE SAFARI

FEBRUARY 11-22, 2025

Rwanda Pre-Tour: February 8-12, 2025

Zanzibar Post-Tour: February 21-24, 2025

Reserve by Credit Card:

Online: northwestern.orbridge.com

Phone: 866-639-0079

Fax: 206-452-5655

Reserve by Check:

Made payable to **Orbridge, LLC**

Mail to: NAA Travel Program

c/o Orbridge, P.O. Box 1376

Poulsbo, WA 98370

GUEST INFORMATION:

Guest #1 Name (Title/Salutation): _____

Email: _____ D.O.B. ____/____/____

Home Phone: _____ Alt. Phone: _____

Address: _____

City: _____ State: _____ Zip: _____

Guest #2 Name (Title/Salutation): _____

Email: _____ D.O.B. ____/____/____

Home Phone: _____ Alt. Phone: _____

DEPOSIT PAYMENT:

Check ACH (Automated Clearing House) MasterCard/Visa American Express Discover

Card #: _____ Exp. Date: _____ CVV: _____

Name (as printed on card): _____

Billing Address (if different from above): _____

City: _____ State: _____ Zip: _____

DEPOSIT:

PRE-TOUR GORILLA TREK PERMIT FEE: A gorilla trek permit fee deposit of \$750 per person is required to guarantee availability. This non-refundable and non-transferable permit is purchased at the time of reservation.

_____ guests joining pre-tour (\$750/person)
(non-refundable gorilla permit fee) \$ _____

_____ guests joining program (\$850/person) \$ _____

_____ guests joining post-tour (\$500/person) \$ _____

TANZANIA OPTIONAL EXCURSIONS (added to your final invoice)—**book early; limited space available:**

_____ guests joining Balloon Safari (\$599/person)


ZANZIBAR OPTIONAL SPICE PLANTATION TOUR (added to your final invoice)—**flight time permitting:**

_____ guests joining Spice Plantation Tour (\$79/person)

TOTAL DEPOSIT: \$ _____

I/we have read, understand, and agree to the full Terms & Conditions at terms.orbridge.com; and I/we agree that Orbridge, LLC is authorized to charge my credit card above and/or take my/our deposit for this program.

Signature: _____ Date: _____

 Orbridge takes seriously the responsibility to minimize our global environmental impact. Each year we plant 100,000 trees in U.S. State Forests with afforestation needs as an ongoing initiative among our evolving sustainability efforts. Learn more at orbridge.com/going-green.

Category	Standard Rate	Special Rate*
Double	\$8,499	\$7,995
Single	\$10,999	\$10,495

Rwanda Pre-Tour
(includes Rwanda gorilla trek permit)

Category	Standard Rate	Special Rate*
Double	\$4,599	\$4,395
Single	\$5,799	\$5,595

Zanzibar Post-Tour

Category	Standard Rate	Special Rate*
Double	\$2,399	\$2,195
Single	\$3,099	\$2,895

Rates are per person based on double occupancy except where noted as Single, in U.S. dollars.

*Special group rate; limited offer. Single availability limited. Airfare from Rwanda to Tanzania is included in the pre-tour rate. Airfare from the Serengeti to Arusha is included in the main program rate. Airfare from Arusha to Zanzibar is included in the post-tour rate. Airfare otherwise not included. **Place your deposit on or before the specified date, and one Expedition Library per room will be sent after receipt of final payment.

Northwestern ALUMNI ASSOCIATION

NAA Travel Program
Northwestern University
Alumni Relations and Development
1201 Davis Street
Evanston, IL 60208-4410

TANZANIA WILDLIFE SAFARI

FEBRUARY 11-22, 2025

Special Alumni Rate:

Save more than **\$1,000** per couple

30-DAY REFUND GUARANTEE

Whether or not you travel with the NAA, you can have an impact on the world by making a gift to Northwestern. From study-abroad opportunities for students to the University's groundbreaking global research, your support is invaluable. Make your gift today at giving.northwestern.edu/travel.

University Travel Disclaimer

The University is not the tour operator. The University acts merely as an agent for the supplier by selling travel-related services, accepting reservations, and booking for services that are not directly supplied by the University. The University, therefore, shall not be responsible for breach of contract; failure to comply with any state or federal laws, including the Americans with Disabilities Act; or any intentional or negligent actions or omissions on the part of such suppliers that may result in any loss, damage, delay, inconvenience, or injury to travelers, travelers' companions, or group members. To review the University disclaimer in detail, visit alumni.northwestern.edu/universitydisclaimer.

FREE EXPEDITION LIBRARY
AN EXCLUSIVE EARLY
RESERVATION BONUS

Reserve by
December 20, 2024**

PRRT STD
U.S. POSTAGE
PAID
PERMIT NO. 825
SAN DIEGO, CA