



LEGACY

AT LUCAS VALLEY

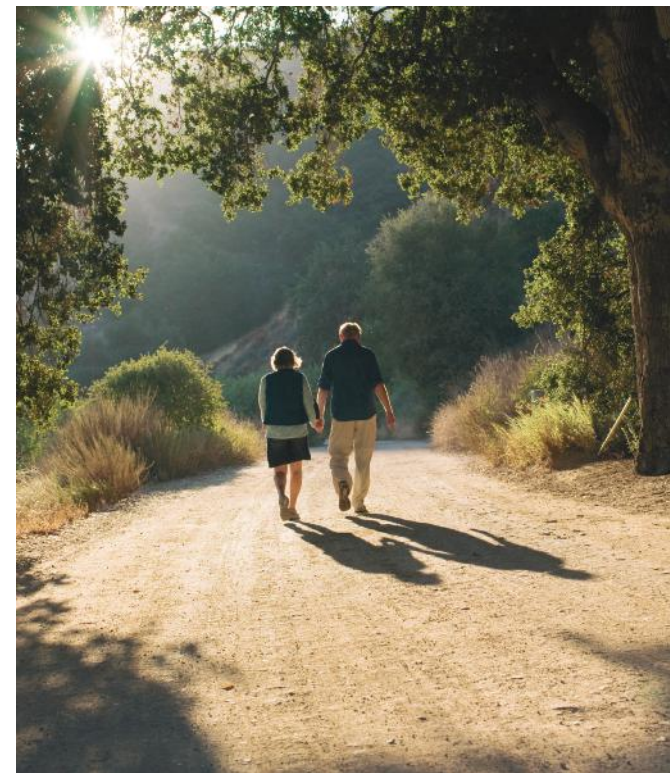
A once-in-a-lifetime opportunity awaits you in Marin County.
Nestled amongst rolling hills under the beautiful coastal sky, 28
contemporary homes with impeccable attention to detail await.





Modern + Views

A nature preserve is one of your closest neighbors. Mountains, beaches, parks, and trails surround you. Skywalker Ranch and some of the original midcentury neighborhoods designed by Eichler are just up the road. Many of these spacious homesites enjoy panoramic views of Lucas Valley.





Elegant + Luxury

Gather with neighbors for al fresco appetizers, meet friends for a stroll at the neighboring Lucas Valley Nature Preserve, or stay in and enjoy a home-cooked meal in your gourmet kitchen. However you design your day, your Haven at Legacy awaits.



With well-appointed chef's kitchens, luxury appliances, modern amenities, and connected indoor-outdoor living spaces, what more could you ask for?



Features + Finishes

Exterior of Your Home

- Complete Andersen Window® and patio door package
- Sherwin-Williams® designer paint
- Certainteed Landmark® Series compositional shingle roof and metal roof per plan
- Exterior stucco finish with concrete-based siding and stone veneer per plan
- Therma-Tru® entry door with keyless entry Kwikset® handset
- Wired Nest® doorbell
- Garage doors based on elevation
- LiftMaster® belt drive garage opener with battery backup and wifi capability
- Garages are equipped with pre-wired 220V electric vehicle charging circuit
- Solar panels installed and fully owned by homeowner per title 24 requirements
- Front yard landscaping

Throughout Your Home

- Full Kohler® faucet package
- Kwikset® lever interior door handles
- 12" by 24" porcelain tile floor at entry, kitchen, laundry, and all baths
- Square drywall corner bead with smooth drywall finish
- 5 ½ inch baseboards
- Paneled interior doors
- Stain grade handrail and balusters at stairs
- LED energy-efficient lighting
- Two-Tone Sherwin-Williams® designer paint
- Shaker panel cabinets with soft-close features
- Standard LED can lights at all bedrooms and great room
- Standard paddle fan pre-wire at great room and primary bedroom

Behind the Walls

- Universal low voltage wiring in all bedrooms and great room with RG6 and CAT6
- 2 WAP (wireless access point) pre-wires at designated location
- Smoke detectors and carbon monoxide detectors
- 80 gallon electric water heater
- 2x6 exterior wall construction for added insulation
- Quickflash® at exterior plumbing and electrical penetrations

In the Kitchen

- Thermador® appliance package, with optional refrigerator to compliment
- InSinkErator® ½ horsepower disposal with convenient deck mounted on/off button
- Kohler® stainless steel apron-front under mount sink
- Kohler® faucet with pull down spray
- Quartz countertops with 1 ½” miter edge with standard 6” backsplash and full splash behind the cooktop

Options & Upgrades

Our Design Studio offers an array of personalization options from cabinets to quartz countertops, and hardwood floors to appliance packages. You will have an opportunity to meet with our design team and personalize your home.

Secondary Bedrooms & Baths

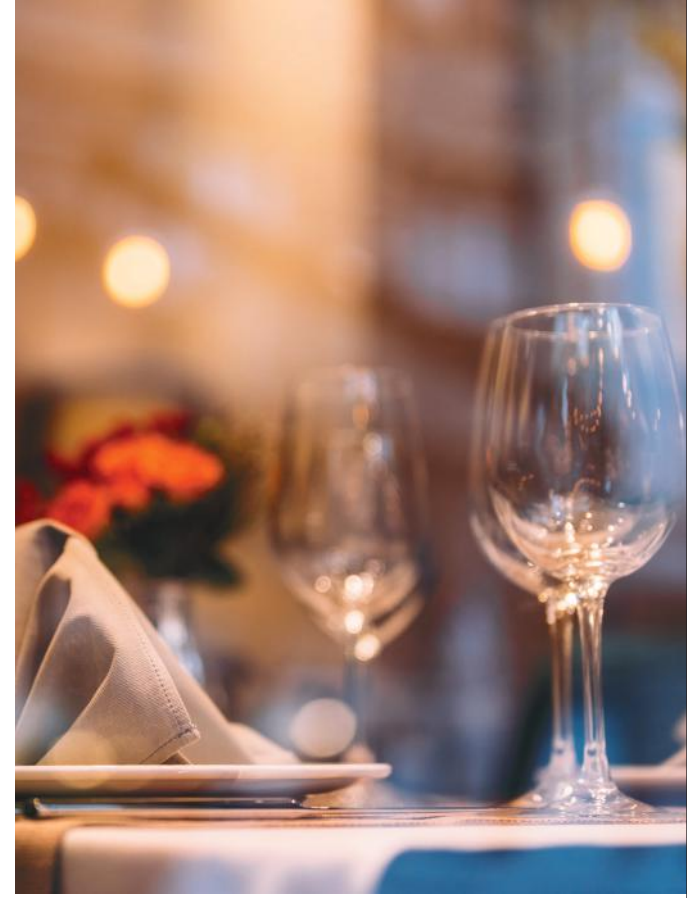
- Kohler® bathroom plumbing fixtures
- Kohler® undermount sinks
- Kohler® toilets in all bathrooms
- Marble stone countertops and tub/shower surrounds in secondary bathrooms
- Closets fitted with shelf stack and chrome shelf and pole

Primary Bedrooms & Baths

- Spacious primary suites with large walk-in closets
- Spa-inspired bathroom
- Kohler® elegant freestanding tub
- Kohler® widespread bathroom fixtures
- Kohler® undermount white sinks
- Kohler Elongated® toilet
- Daltile® designer large format tile in shower surround with coordinating tile shower pan
- Frameless heavy glass shower enclosures
- Quartz vanities with 1 ½” miter edge

Vibrant + Charming

Just 20 miles from San Francisco, a short drive to San Rafael, Larkspur, Sausalito, and Sonoma Wine Country, you are perfectly situated to enjoy all that a Marin lifestyle affords. Haven Development is known for creating spectacular custom estates. We bring that experience and style to Legacy at Lucas Valley.

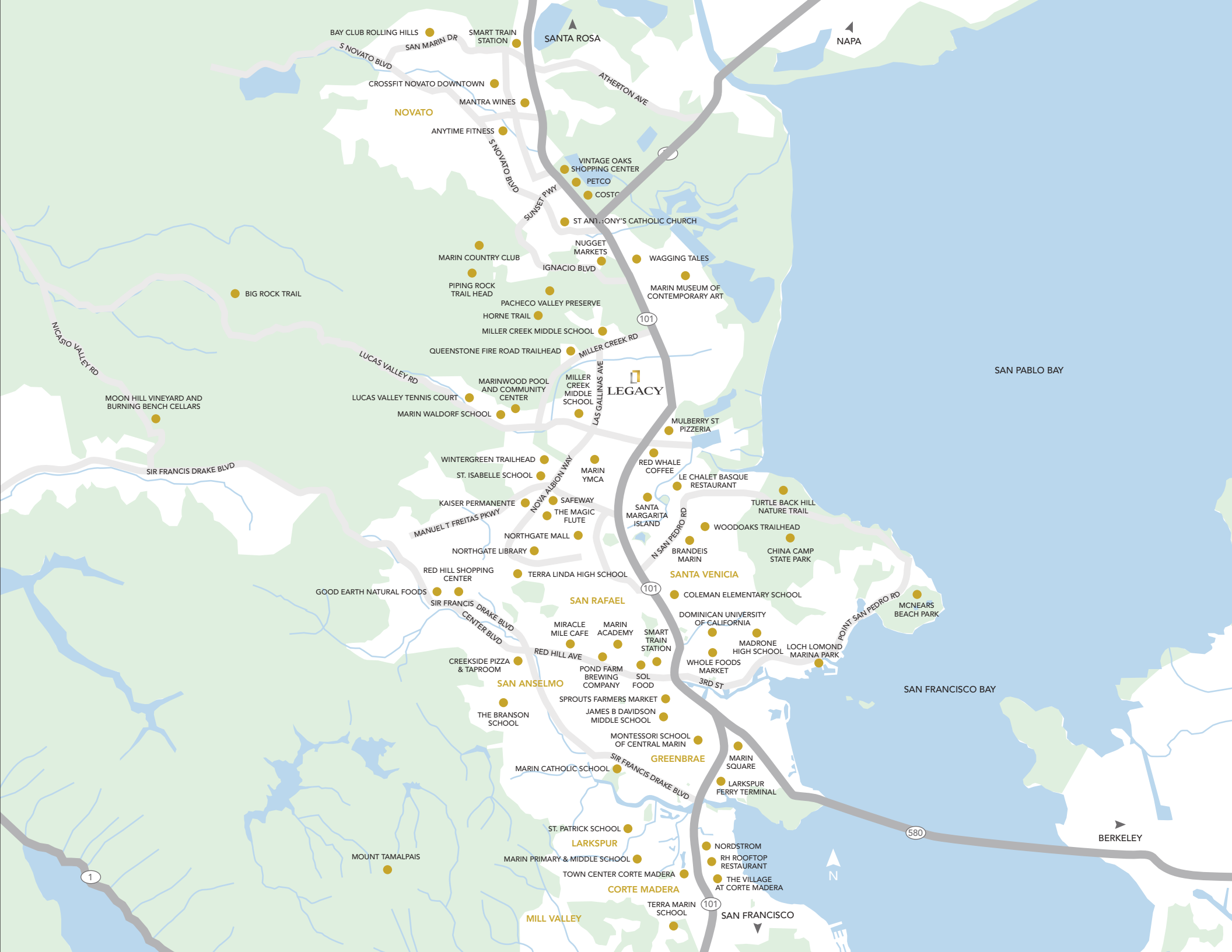




Gather your family and friends and head to downtown San Rafael, or any of the wonderful restaurants and shops in Marin.

Legacy at Lucas Valley presents a unique chance to own a new luxury home in the heart of Marin County. Perfectly situated close to nature, with expansive open spaces, residents can enjoy the best of both worlds, with easy access to top-rated schools, along with close proximity to some of the finest dining, shopping, and entertainment that the Bay Area has to offer.





BAY CLUB ROLLING HILLS
SAN MARIN DR
SMART TRAIN STATION

SANTA ROSA

NAPA

CROSSFIT NOVATO DOWNTOWN
MANTRA WINES

NOVATO

ANYTIME FITNESS

VINTAGE OAKS SHOPPING CENTER
PETCO
COSTCO

ST ANTHONY'S CATHOLIC CHURCH

MARIN COUNTRY CLUB

NUGGET MARKETS

WAGGING TALES

PIPING ROCK TRAIL HEAD

PACHECO VALLEY PRESERVE

MARIN MUSEUM OF CONTEMPORARY ART

HORNE TRAIL

MILLER CREEK MIDDLE SCHOOL

QUEENSTONE FIRE ROAD TRAILHEAD

MILLER CREEK RD
MILLER CREEK MIDDLE SCHOOL

LEGACY

SAN PABLO BAY

NICASSO VALLEY RD

MOON HILL VINEYARD AND BURNING BENCH CELLARS

LUCAS VALLEY RD

MARINWOOD POOL AND COMMUNITY CENTER
MILLER CREEK MIDDLE SCHOOL

LAS GALLINAS AVE

MULBERRY ST PIZZERIA

SIR FRANCIS DRAKE BLVD

WINTERGREEN TRAILHEAD
ST. ISABELLE SCHOOL

MARIN YMCA

RED WHALE COFFEE

LE CHALET BASQUE RESTAURANT

KAISER PERMANENTE
THE MAGIC FLUTE

SAFEWAY

SANTA MARGARITA ISLAND

WOODOAKS TRAILHEAD

MANUEL T FREITAS PKWY

NORTHGATE MALL

MARIN YMCA

BRANDEIS MARIN

TURTLE BACK HILL NATURE TRAIL

NORTHGATE LIBRARY

TERRA LINDA HIGH SCHOOL

SANTA VENICIA

CHINA CAMP STATE PARK

GOOD EARTH NATURAL FOODS

SIR FRANCIS DRAKE CENTER BLVD

SAN RAFAEL

COLEMAN ELEMENTARY SCHOOL

MCNEARS BEACH PARK

RED HILL SHOPPING CENTER

MIRACLE MILE CAFE
MARIN ACADEMY

DOMINICAN UNIVERSITY OF CALIFORNIA

CREEKSIDE PIZZA & TAPROOM

RED HILL AVE

SMART TRAIN STATION

MADRONE HIGH SCHOOL

POND FARM BREWING COMPANY

SOL FOOD

WHOLE FOODS MARKET

LOCH LOMOND MARINA PARK

SAN ANSELMO

SPROUTS FARMERS MARKET
JAMES B DAVIDSON MIDDLE SCHOOL

3RD ST

SAN FRANCISCO BAY

THE BRANSON SCHOOL

MONTESSORI SCHOOL OF CENTRAL MARIN

GREENBRAE

MARIN CATHOLIC SCHOOL

MARIN SQUARE

LARKSPUR FERRY TERMINAL

MOUNT TAMALPAIS

ST. PATRICK SCHOOL

LARKSPUR

NORDSTROM

MARIN PRIMARY & MIDDLE SCHOOL

TOWN CENTER CORTE MADERA

RH ROOFTOP RESTAURANT

MILL VALLEY

TERRA MARIN SCHOOL

THE VILLAGE AT CORTE MADERA

BERKELEY

1

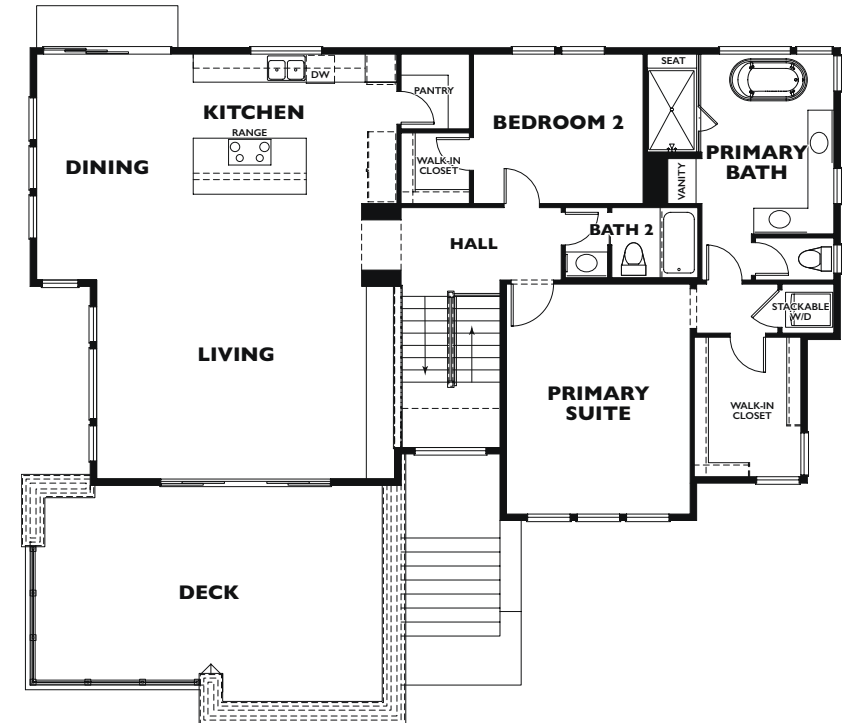
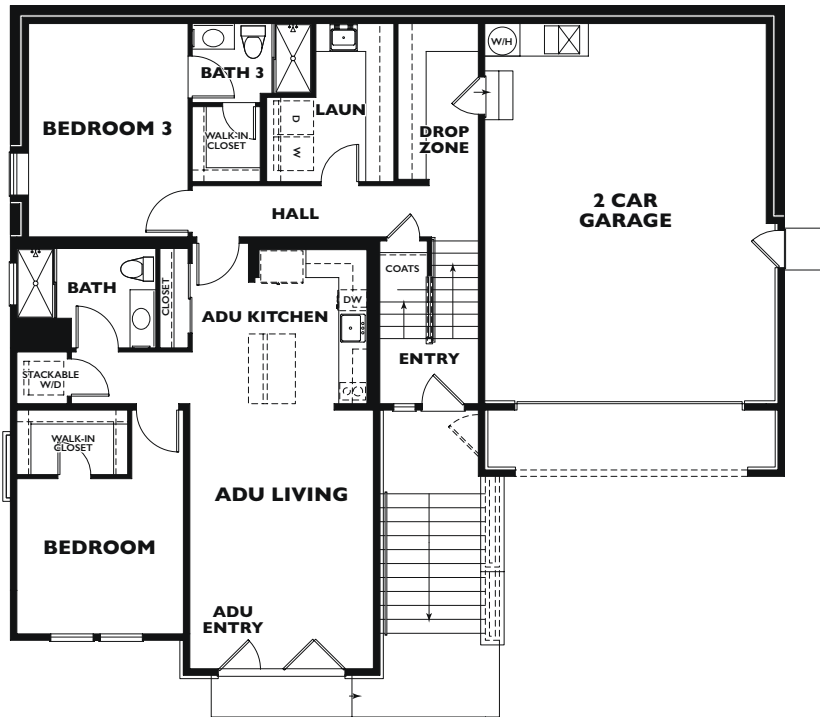
101

101

101

580

The Lucas



1st Floor with ADU Apartment

2nd Floor

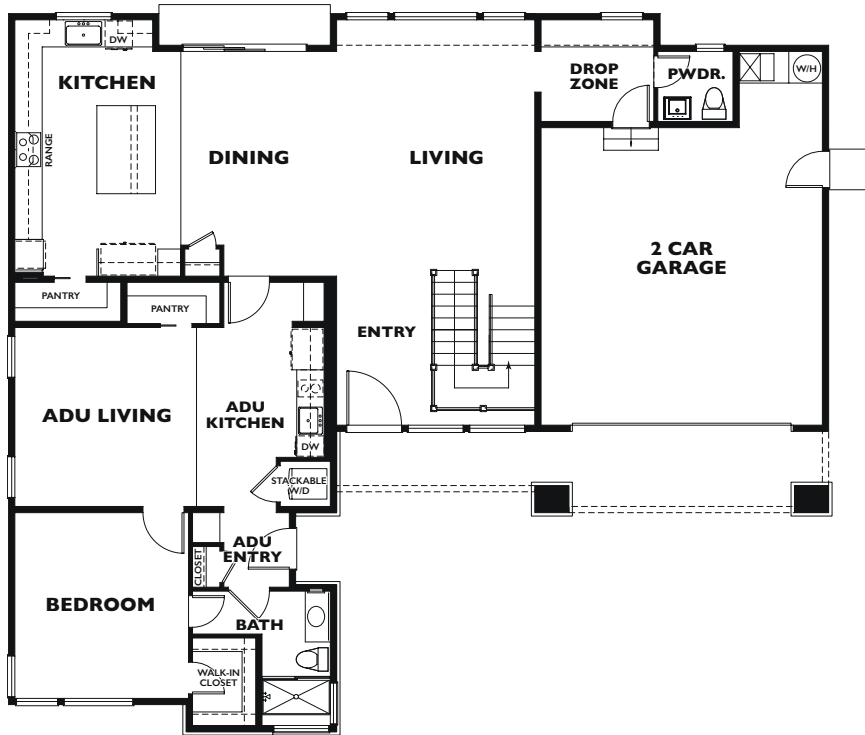
2 floors • 4 bedrooms • 4 baths • 2-car garage

2nd floor deck • 1st floor ADU apartment with separate entry • 3,081 sq. ft.

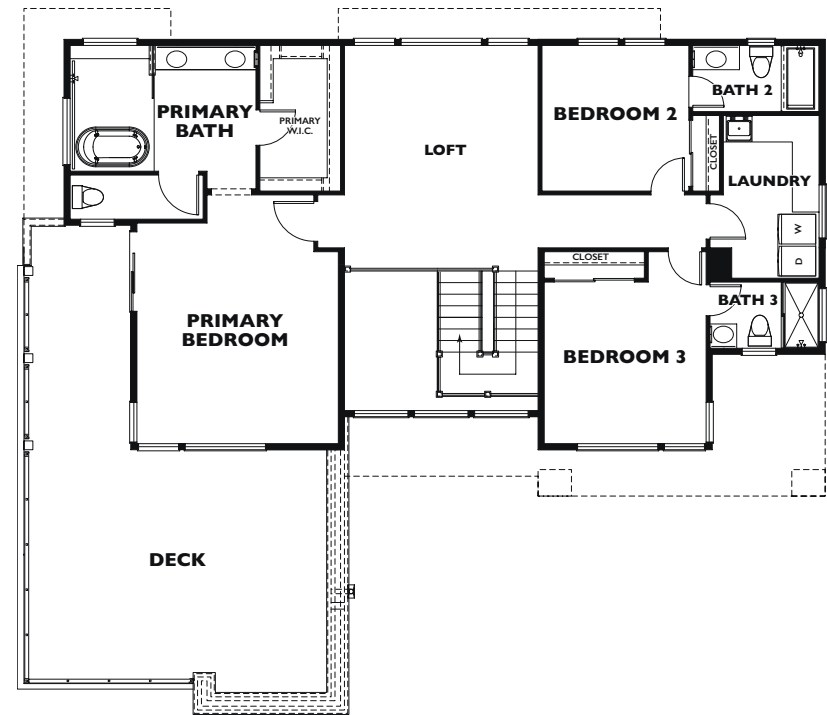
Nestled amongst the rolling hills, you'll hear the local neighbor the American Robin.



The Muir I



1st Floor
with ADU Apartment



2nd Floor

2 floors • 4 bedrooms • 4.5 baths • 2-car garage

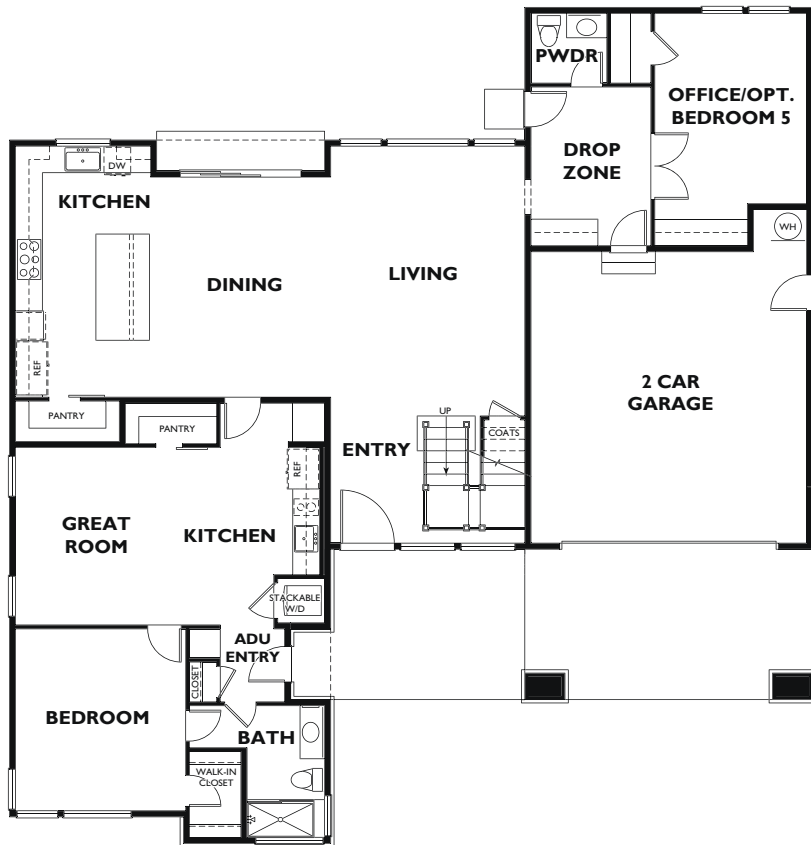
2nd floor deck • 1st floor ADU apartment with separate entry • 3,198 sq. ft.



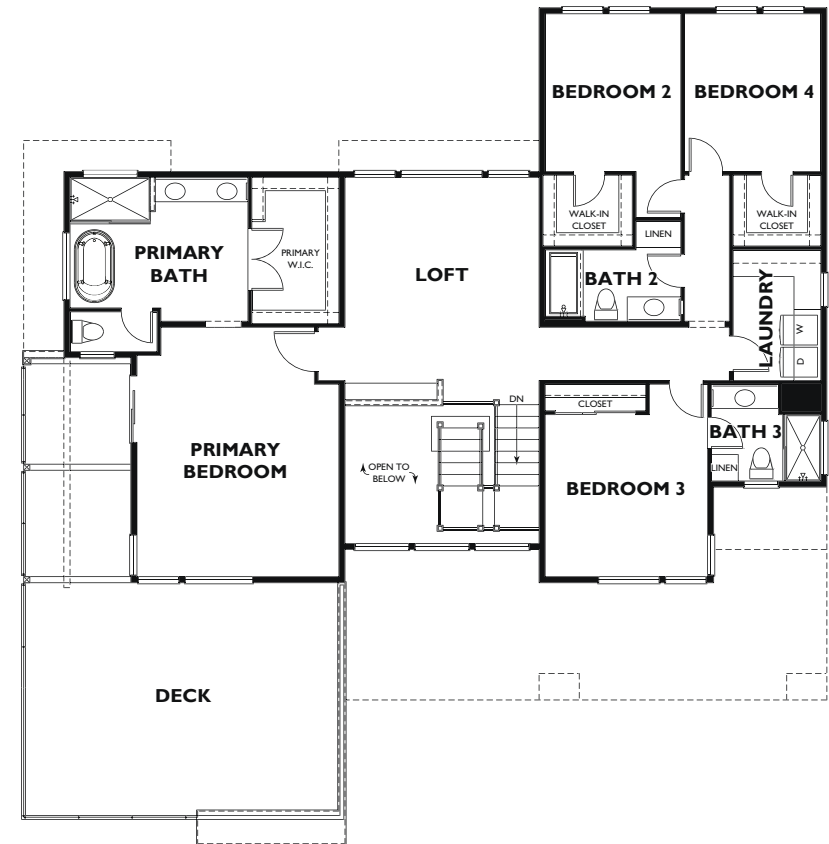
Walk among the ancient redwoods in Muir Woods National Monument just 15 miles south.



The Muir II



**1st Floor
with ADU Apartment**



2nd Floor

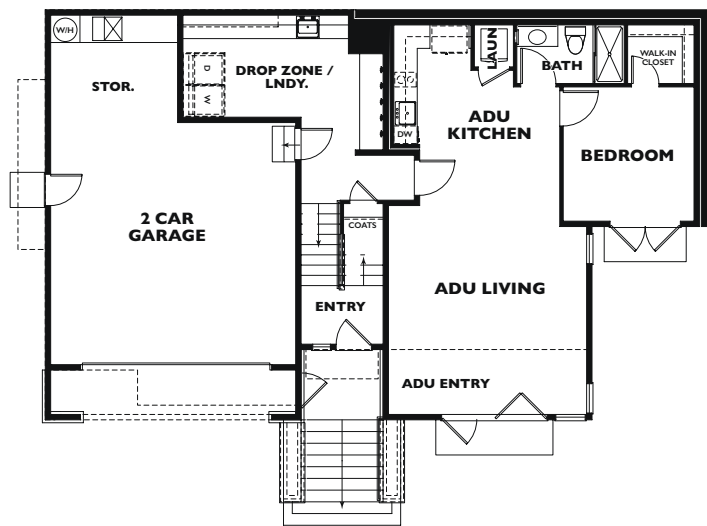
2 floors • 4 bedrooms • 4.5 baths • 2-car garage

2nd floor deck • 1st floor ADU apartment with separate entry • 3,721 sq. ft.

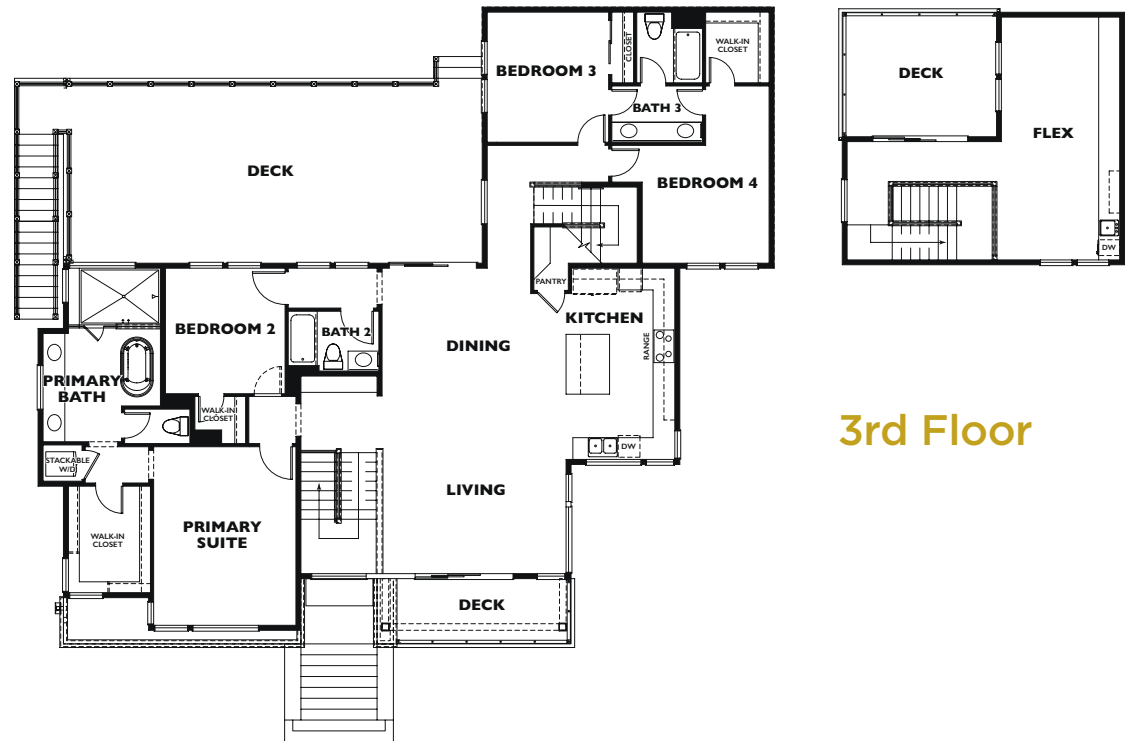
Hike the Tennessee Valley Trail and be immersed in a sea of color during wildflower season.



The Reyes



1st Floor
with ADU Apartment



2nd Floor

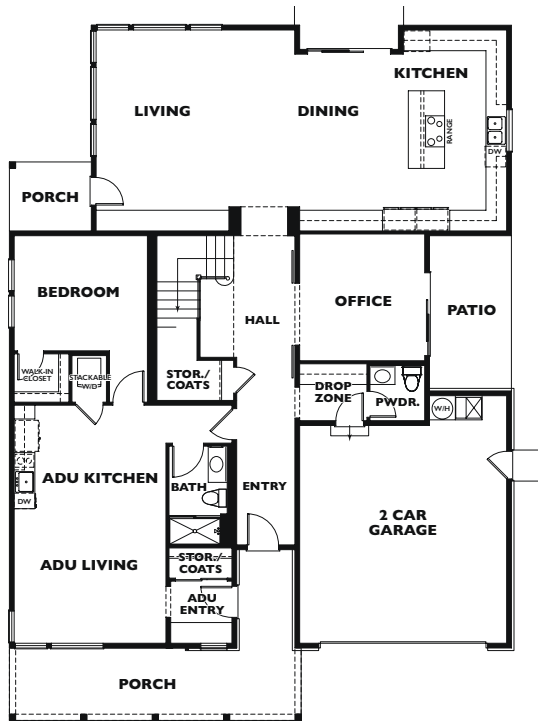
3rd Floor

3 floors • 4-5 bedrooms + flex • 4 baths + optional half bath • 2-car garage
2nd & 3rd floor decks • 1st floor ADU apartment with separate entry • 3,688-3,692 sq. ft.

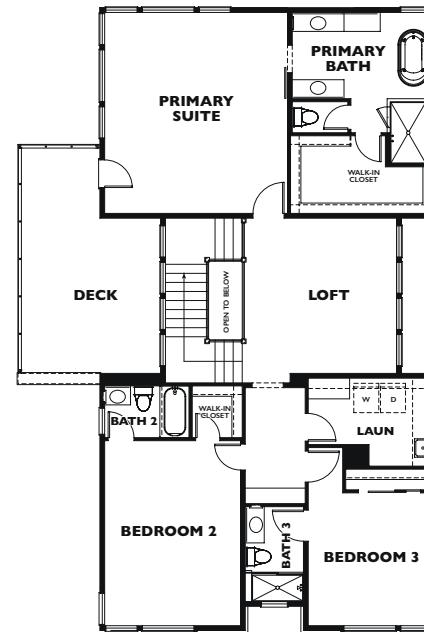
*Enjoy your coffee after
a morning walk.*



The Tamalpais



1st Floor with ADU Apartment



2nd Floor

2 floors • 4 bedrooms • 4.5 baths • 2-car garage • 1st floor porch & patio
2nd floor deck • 1st floor ADU apartment with separate entry • 3,769 sq. ft.



*Every detail elegantly designed
to fit your lifestyle.*

About Haven Development

As a boutique builder, Haven prioritizes attention to detail, offering the industry's finest products and nothing less, built with the kind of integrity you won't find anywhere else. Blending beauty and reliability, finishes and features like Andersen Windows, Kohler faucets and Thermador appliances come standard—because you deserve the best. We make every home a haven.







Erin Drive, San Rafael, CA 94903 | LegacybyHaven.com

Paul Renker Sales Manager | prenker@havenca.com | (925) 502-7286



Sales: The Advantage Group (DRE #01187063). This is not an offer of real estate for sale, nor a solicitation of an offer to buy, to residents of any state or province in which registration and other legal requirements have not been fulfilled. All plans, amenities and features are subject to change at any time. © 2024 Haven Development. 09/20/2024