

FON DU LAC

Park District

JANUARY - JUNE 2026



WHO WE ARE

JAN- JUNE
2026

FACILITIES

FON DU LAC PARK DISTRICT ADMINISTRATION CENTER

201 Veterans Drive
East Peoria, IL 61611
(309) 699-3923
info@fondulacpark.com

FON DU LAC FARM PARK

305 Neumann Drive
East Peoria, IL 61611
(309) 694-2195
farmpark@fondulacpark.com

CARL SPINDLER CAMPGROUND

3703 N. Main Street
(Access Road #7)
East Peoria, IL 61611
(309) 699-3549
spindler@fondulacpark.com

CARL SPINDLER MARINA

3701 N. Main Street
(Access Road #7)
East Peoria, IL 61611
(309) 699-3549
spindler@fondulacpark.com

CENTRAL ILLINOIS RIDING THERAPY (CIRT)

305 Neumann Drive
East Peoria, IL 61611
(309) 699-3710
cirt@cirt.info

GOLF FACILITIES

FON DU LAC GOLF COURSE

123 Par 3 Lane
East Peoria, IL 61611
(309) 699-4222
quailmeadows@fondulacpark.com

QUAIL MEADOWS GOLF COURSE & DRIVING RANGE

2215 Centennial Drive
Washington, IL 61571
(309) 694-3139
quailmeadows@fondulacpark.com

TUMBLING FACILITIES

FON DU LAC TUMBLING INTERIM. FACILITY

350 Cimmeron Drive
East Peoria, IL 61611
**FON DU LAC PARK DISTRICT
GYM COMPLEX**
309 Springfield Road
East Peoria, IL 61611

PEOPLE WHO SERVE YOU

Park District Director	Craig Weigle	Craig@fondulacpark.com
Business Manager	Erin Glover	Erin@fondulacpark.com
Superintendent of Parks	Adam Mingus	Adam@fondulacpark.com
Director of Golf	Steven Blackburn	Steven@fondulacpark.com
Senior Program Supervisor	Jackie Gorrell	Jackie@fondulacpark.com
Camp/Latchkey Supervisor	Selena Quezada	Kids@fondulacpark.com
Sports Programmer	Kenny Pleimann	kenny@fondulacpark.com
Event & Recreation Coordinator	Kris Holcomb	Kris@fondulacpark.com
Spindler Marina/Campground Mgr	Amanda Hill	Spindler@fondulacpark.com
Fon du Lac Farm Park Mgr	Kylie Emert	Farmpark@fondulacpark.com
Administrative Assistant	Alison Miller	Alison@fondulacpark.com
Marketing Coordinator	Kylie Brown	Kbrown@fondulacpark.com
Police Chief	Dale Orr	Dorr@fondulacpark.com

BOARD OF COMMISSIONERS

PRESIDENT

Seth Landwehr

VICE-PRESIDENT

Rick Schwab

COMMISSIONER

Steve Deatherage

COMMISSIONER

Les Newton

COMMISSIONER

Jody Pullium

BOARD MEETING DATES:

ALL MEETINGS ARE HELD AT 4:00 PM
AT THE ADMINISTRATION CENTER
FEB 17, MAR 16, APR 20, MAY 18, JUNE 15

FONDULACPARK.COM

INFO@FONDULACPARK.COM

EQUAL OPPORTUNITY

Fon du Lac Park District does not discriminate on the basis of race, color, religion, age, nationality, or disability in employment services, programs, or activities. Anyone believing him or herself to have been subjected to discrimination may contact the Fon du Lac Park District Administration Center at 201 Veterans Drive, East Peoria, Illinois 61611 or phone at (309) 699-3923.

THE AMERICANS WITH DISABILITIES ACT

Americans with Disabilities Act of 1991 (Public Law 101-336) was adopted by congress for the purpose of eliminating discrimination against people with disabilities. This act prohibits exclusion of qualified individuals with disabilities from services, programs or activities of any state or local government, which includes Park Districts as of January 26, 1992.

TO ERR IS HUMAN

Errors in scheduling programs may occur. Circumstances may require adjustments to programs, fees, schedules, etc. The Park District reserves the right to make any such adjustments.

FON DU LAC PARK DISTRICT POLICE

PARK DISTRICT POLICE MISSION:

The Fon du Lac Park District Police is dedicated to providing a safe and enjoyable environment for the residents and visitors of our parks and facilities located in the City of East Peoria. We work in partnership with the East Peoria Police Department and citizens we serve to ensure and promote dignity, respect, and a safe and secure environment for all our visitors. If you would like to report any vandalism or wrongdoing, please feel free to email police@fondulacpark.com — your suggestions are also appreciated.

LOCATION: 305 SPRINGFIELD ROAD

EMERGENCY ASSISTANCE: 911

NON-EMERGENCY PHONE: (309) 698-4700

PARK POLICE OFFICE: (309) 699-5615

THE PARK DISTRICT USES DAYSMART FOR
REGISTRATION. SCAN THE QR CODE TO ACCESS

FON DU LAC PARK DISTRICT ADMINISTRATION CENTER:

Monday - Thursday: 8:00 AM - 6:00 PM

Friday: 8:00 AM - 1:30 PM

Payments must be made at the time of registration. We accept Visa/Mastercard/Discover/American Express. Registrations are handled on a first come, first serve basis.

PHONE REGISTRATION:

Registrations can be made by calling (309) 699-3923 with debit/credit card payment.

CANCELLATION:

The Park District reserves the right to cancel or change any activities, programs, or instructors for any and all programs.

LATE REGISTRATION:

Participants will be considered on a case by case basis.

Adult & Senior Programs

Jazzercise 36

Pool Room 38

Senior Programs 37

Adult Slow-Pitch Softball 33

Rentals

Administration Building Rentals 39

Tumbling Birthday Parties 30

Shelter 40

Boating

Carl Spindler Marina 4

Brady Bark Park 18

Cabins/Camping

Carl Spindler Campground 4

Central Illinois Riding Therapy 8

Community Events 1,7,10,17,24,26,43

Disc Golf 23

Eastlight Theatre/ Penguin Project 35

Fon du Lac Farm Park 5-6

Fon du Lac Park District Police 2

Golfing

Quail Meadows Golf Course 11-12

The Covey Indoor Golf 13

Fon du Lac Golf Course 14

Helping Hands Scholarship 3

IRVSR 9

Kids Programs

Latchkey 25

Rainbow Junction 25

Playgrounds 44-48

Accessible Playground 44-45

Resident Discount Card 3

River Trail 19-20

Sports and Exercise

Recreational Courts / Skate Park 15

Outdoor Fitness Court 16

Tumbling 27-30

Girls Softball 32

Sports for Tots 31

Tae Kwon Do 34

Adult Slow Pitch Softball 33

Spring Creek Preserve 21-22



PUBLIC ACKNOWLEDGEMENT

Any persons involved in a Park District activity agrees to let the Park District use a photograph of themselves engaged in an activity, unless notification is made otherwise.

INSURANCE:

The Park District provides no medical insurance, and assumes no liabilities for personal injury or loss of property while attending a Park District activity.

DISCIPLINE CLAUSE:

The Park District and any employee, instructor, or volunteer reserves the right to dismiss or remove from an activity any person who is behaving unruly or obstructively.

ALCOHOLIC BEVERAGES:

No alcoholic beverages of any kind are allowed on Park District property.



FON DU LAC PARK DISTRICT 2ND ANNUAL EASTER PAIS & BUNNY TAILS EGG HUNT



MARCH 28
2026

FREE
EVENT

STARTS AT
10:00 AM

VETERANS PARK IN EAST PEORIA

DON'T FORGET TO SAY HI TO THE EASTER BUNNY
WHILE YOU'RE HERE!



POLICE FON DU LAC PARK DISTRICT

Chief of Police: Dale Orr

MISSION STATEMENT

THE FON DU LAC PARK DISTRICT POLICE IS DEDICATED TO PROVIDING A SAFE AND ENJOYABLE ENVIRONMENT FOR THE RESIDENTS AND VISITORS OF OUR PARKS AND FACILITIES LOCATED IN THE CITY OF EAST PEORIA. WE WORK IN PARTNERSHIP WITH THE EAST PEORIA POLICE DEPARTMENT AND CITIZENS WE SERVE TO ENSURE AND PROMOTE DIGNITY, RESPECT, AND A SAFE AND SECURE ENVIRONMENT FOR ALL OUR VISITORS.



OBJECTIVES

THE OBJECTIVE OF THE FON DU LAC PARK DISTRICT POLICE DEPARTMENT IS TO ENFORCE THE PHILOSOPHY OF “COMMUNITY POLICING” AND TO ENSURE ALL PARK DISTRICT RULES AND REGULATIONS, CITY AND STATE LAWS ARE ENFORCED WITHIN OUR COMMUNITY. WE STRIVE TO MAINTAIN THE HIGHEST DEGREE OF TRAINING OF OUR OFFICERS IN ORDER TO BETTER SERVE THE FON DU LAC PARK DISTRICT AND THE CITY OF EAST PEORIA.

RIVER BOAT PATROLS & RESCUE:

The Fon du Lac Park Police Department provides active patrols and initial law enforcement and rescue response to all types of incidents on the Illinois River within its jurisdiction. In addition, our department works in conjunction with the Illinois Conservation Police, US Coast Guard, and the Tazewell County Sheriffs Department in providing

law enforcement and rescue response through an inter-agency agreement. This agreement increases our ability to more effectively provide security to all ports, infrastructures, and key facilities located along the Illinois River between River Mile Markers 139.6 to 181.3.

The Fon du Lac Park District Police has a 30' Monark boat equipped for quick response to incidents on the river. This vessel is equipped with VHF/UHF radios, a Starcom radio, night vision equipment, river rescue equipment, and defibrillator. The department also has a hovercraft used in areas of the river the boat cannot access.



**Police Department
Contact Information:**

Location:
305 Springfield Road
East Peoria, IL 61611

Phone Number:
Emergency: 911
Non-Emergency:
(309) 698-4700
Office Phone: (309) 699-5615

Email Address:
police@fondulacpark.com



HELPING HANDS

Scholarship Foundation

Eligible participants can receive up to \$50 each quarter to use toward Park District Programs.

Each participant must pay a minimum of \$5/quarter.

HOW TO MAKE A DONATION:

CALL: (309) 699-3923

IN-PERSON: 201 VETERANS DRIVE
EAST PEORIA, IL 61611

The Helping Hands Foundation was created exclusively for charitable purposes and to support the programs and facilities of the Fon du Lac Park District. Donors have the option of restricting their gifts to specific programs, facilities, or projects.

All donations to the Helping Hands Foundation are tax deductible as allowed by law.

How to Apply:

Forms are available at the Administration Center:
201 Veterans Drive, East Peoria, IL 61611

Monday - Thursday 9:00 AM - 3:00 PM

Friday - 9:00 AM - 1:00 PM

Eligibility:

Proof of Residency & ID: Drivers License, CILCO Bill, Current Signed Lease, Tax Bill, Etc.

***Resident:** Those residing in Fon du Lac Park District Taxing Boundary.*

Proof of Income: State Issued Medical Card with participant listed, SNAP/EBT Benefit Paperwork, Residency in a Certified Foster Home, US - 1040 with participant listed as a dependant

RESIDENT DISCOUNT CARD

Eligibility: Must reside in Fon du Lac Park District Taxing Boundaries

How to sign up:

Visit our Administration Building
Tuesday - Thursday, 8:00 AM - 3:00 PM.
Please bring your Current Photo ID and
Proof of Residency (Property Tax Bill, Water Bill, Electric Bill, Vehicle Registration Card, Etc.).

Every person ages 2 and up is required to have a card to receive the discounts.

Current Discount Offers:

FON DU LAC FARM PARK

\$1.00 Off
General Admission
Ages 2-61
Free Admission
for under 2 and 62+
Excludes
Witches Walk

FON DU LAC GOLF COURSE

Open Play Only
- excludes
league play or
tournaments

\$2.00 off
first 9-holes
(all ages
any day)

QUAIL MEADOWS

Open Play Only
- excludes
league play or
tournaments

\$5.00 off 18-holes / \$3.00 off 9-holes
Valid
weekdays
anytime,
weekends or
holidays after
10am

SPINDLER CAMPGROUND & MARINA

\$5.00 off
Cabin Rental
per day
\$3.00 off Tent
Camping per
day
\$3.00 off
Canoe/Kayak
Rental
\$1.00 off
Launch Fee

Carl Spindler



LOCATION:

3703 N. Main Street
(Access Road #7)
East Peoria, IL 61611

OFFICE HOURS:

MONDAY - FRIDAY
7:30 AM - 3:30 PM

SATURDAY - SUNDAY
CLOSED

FOR QUESTIONS OR TO
MAKE A RESERVATION:
(309) 699-3549

2026 RATES

CAMPING RATES

Hookups	DAILY	WEEKLY	MONTHLY
Electric Only	\$30	\$170	\$440
Water & Electric	\$32	\$185	\$470
Water, Electric, and Sewer	\$35	\$200	\$500
Cone Park (15-Amp)	\$26	\$145	\$340
Cone Park (30-Amp)	\$30	\$170	\$440

Tent Camping (7 Day Limit)	Per Day/Per Tent
Without Electricity	\$20
With Electricity	\$26

Other Offerings	MONTHLY
Dump Station - Per Use	\$5

MARINA RATES

April 15th - October 15th	
Public Daily Launch	\$5
Daily Boat/Overnight Slip Rental	\$7
Season Launch Pass	\$50
Monthly Slip Rental	\$60

CABIN RENTAL

\$70/Night	Limit 7 Days
Cabins are 10' x 20' with 8' ceilings. Nightly fee includes electricity, use of the bathhouse, and laundry facility.	Inside the cabin: <ul style="list-style-type: none">• Two Single Bunks• Full Bed• Ceiling Fan• Electrical Outlet• Small Refrigerator• Mattresses (No Linens)• Air Conditioner

Cabin Deposit
All cabin rentals will be subject to an ADDITIONAL \$25 damage deposit. This will be charged at booking and will be refunded 3-5 business days after the rental as long as there is no damage during your stay.

Important Updates
EVERY TRANSACTION will require a \$3.50 booking fee in addition to a Credit Card Processing Fee. This NON-REFUNDABLE, MANDATORY fee is <u>not</u> included our rates.

Fon du Lac Farm Park



Fon du Lac Park District
East Peoria, Illinois

LOCATION:
305 Neumann Drive
East Peoria, IL 61611
(309) 694-2195

HOURS OF OPERATION - SPRING
APRIL 16TH - MAY 24TH

Thurs - Sun : 9:00am - 3:00pm

HOURS OF OPERATION - SUMMER
MAY 25TH - AUGUST 9TH

Tue - Sun : 9:00am - 3:00pm

OPEN ON MEMORIAL DAY, MAY 25TH

HOURS OF OPERATION - FALL
AUGUST 13TH - SEPTEMBER 7TH

Thurs - Sun : 9:00am - 3:00pm

OPEN ON LABOR DAY, SEPTEMBER 7TH

PRICING - PER PERSON

UNDER AGE OF 2

FREE

CHILDREN (AGES 2 - 12)

\$4.50

GENERAL ADMISSION (AGES 13-61)

\$5.50

SENIORS (AGES 62+)

\$4.50

TUESDAYS (JUNE 2ND - AUGUST 4TH)

FREE

**GROUP RATE (10+ ADMISSIONS- ANY
AGE) WITH 48 HOURS NOTICE**

\$4.00

ANIMAL FEED CONE

\$0.75



Fon du Lac Farm Park



SEASON PASS

APRIL 16TH, 2026 -
SEPTEMBER 7TH, 2026

305 NEUMANN DRIVE
EAST PEORIA, IL 61611
(309) 694-2195
FARMPARK@FONDULACPARK.COM

NOT VALID FOR WITCHES WALK

WAYS TO PURCHASE:

IN-PERSON:
ADMINISTRATION BUILDING
201 VETERANS DRIVE
EAST PEORIA, IL 61611

ONLINE:
FONDULACPARK.COM



RESIDENT \$70
(UP TO FOUR FAMILY MEMBERS)

NON-RESIDENT \$80
(UP TO FOUR FAMILY MEMBERS)

ADDITIONAL
FAMILY \$12.50/EACH
MEMBERS

SWING into summer!

WITH FON DU LAC PARK DISTRICT

FREE MOVIE

FREE INFLATABLES

FEATURING:

JUNE 6TH, 2026
FUN STARTS AT 6:00 PM

WITH SPECIAL GUESTS





OFFICE HOURS

Mon - Thurs: 9:00am - 5:00pm

Friday: 9:00am - 3:30pm

Saturday - Sunday: Closed

LOCATION:

305 Neumann Drive

East Peoria, IL 61611

(Adjacent to
Fon du Lac Farm Park)

CONTACT:

Jenna Walker

cirt@cirt.info

(309) 699-3710

www.cirt.info

WHO WE ARE

CIRT is a non-profit organization serving children, teens & adults (including U.S. Veterans) with mental, physical, emotional & behavioral disabilities, from Tazewell and surrounding counties, in a therapeutic comprehensive and recreational horseback riding program.

PURPOSE

To promote the well-being of persons with disabilities through the provisions horseback riding and other related activities within a safe and enjoyable designed by professionals and implemented primarily by volunteers.

UPCOMING FUNDRAISERS

**5K GALLOP & 1K
TROT-WALK**
APRIL 4TH, 2026

CIRT DERBY DAY
MAY 2ND, 2026

**CIRT ANNUAL OPEN
HORSE & TACK SALE**
MAY 30TH, 2026

SCAN FOR



FULL INFO



illinois river valley special recreation association

OFFICE HOURS

Mon - Fri: 10:00am - 5:00pm

LOCATION:

IRVSRA Rec. Center
1715 Dragon Drive
Pekin, IL 61554

CONTACT:

INFO@IRVSRA.ORG
(309) 201-4005
IRVSRA.ORG

MISSION STATEMENT

IRVSRA continues to provide integrated and specialized programs to all residents of Tazewell County. Peer groups are invaluable. IRVSRA provides opportunities to individuals with disabilities to surround themselves with friends and neighbors that share commonalities. It is our pleasure to provide these athletic and social settings for the special needs population in the Tazewell County area.

Upcoming Events

**St. Paddy's Day
Dance Party
Saturday, March 14th
5:30 - 7:30 PM**

Resident \$30/ Non-Resident \$35
T-Shirt Registration Deadline: Monday,
March 2nd

Join us for an evening of dancing! Pizza, beverages, and treats are provided as well as plenty of photo opportunities. T-Shirt included if you register by Monday, March 2nd.

**IRVSRA Rummage Sale
April 10th - 12th
Times: TBA**

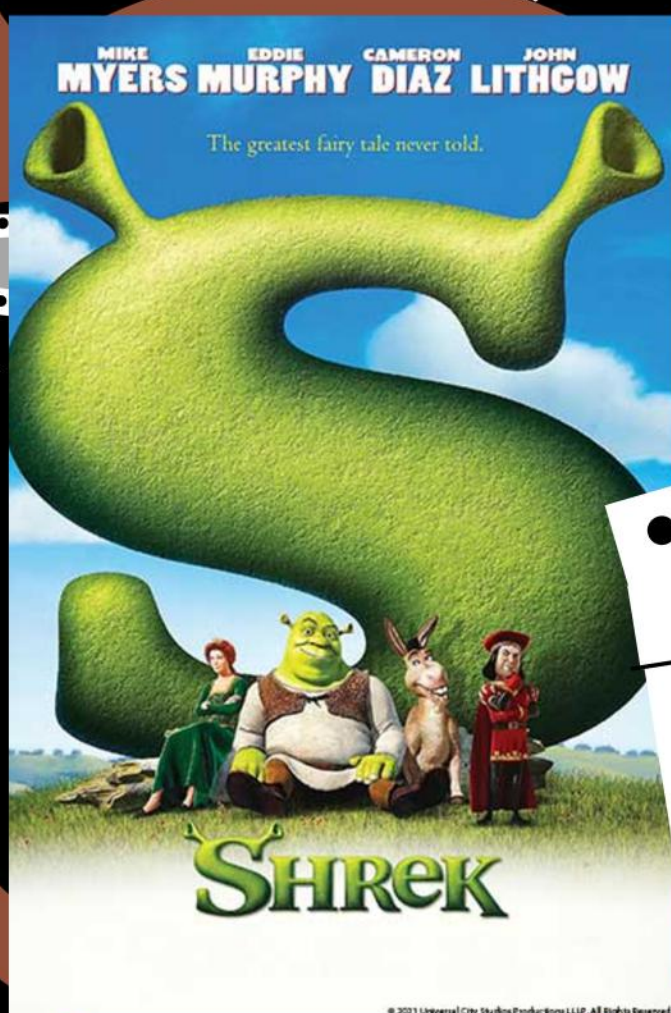
**Accepting donations for
the Rummage Sale
beginning March 24th. No
electronics unless
approved.**



Interested in learning more about IRVSRA?
Scan the QR code to visit their website!

Fon du Lac Park District's

FLASHBACK FLICKS



Presented By: Fon du Lac Park District
Licensing via Swank Motion Pictures, LLC.



Quail meadows GOLF COURSE

2215 CENTENNIAL DRIVE
WASHINGTON, IL 61571

(309) 694 - 3139

MONDAY-FRIDAY
6:30 AM - 7:00 PM
SATURDAY-SUNDAY
6:00 AM - 7:00 PM

DRIVING RANGE

**April & October -
November 15th**

May - September

MON-THURS

8:00 AM - 7:00 PM

7:00 AM - 8:00 PM

FRIDAY

9:00 AM - 7:00 PM

9:00 AM - 8:00 PM

WEEKENDS

6:30 AM - 7:00 PM

6:30 AM - 8:00 PM

SMALL BUCKET (34 GOLF BALLS)

\$ 4

LARGE BUCKET (85 GOLF BALLS)

\$ 8

Reusable Key Cards

20 SWIPES (\$3.60/SWIPE)

\$ 7 2

30 SWIPES (\$3.33/SWIPE)

\$ 1 0 0

50 SWIPES (\$3.20/SWIPE)

\$ 1 6 0

RATES

	9	18	9	18
ADULT	Weekday \$17	\$28	Weekend/Holiday \$17	\$28
SENIOR	Weekday \$17	\$23	Weekend/Holiday \$17	\$28
JUNIOR	Weekday \$7	\$12	Weekend/Holiday \$7	\$12

**9 Holes-
Per Rider**

**18 Holes-
Per Rider**

1 / 2 CART

\$ 1 2

\$ 1 8

CLUB RENTAL

\$ 1 0

PULL CART

\$ 6

SEASON PASS

Limited

Resident

Non-Res

SENIOR

\$ 4 3 5

\$ 5 1 0

A D U L T

\$ 4 8 0

\$ 5 5 5

**YOUNG ADULT
(18-26 YEARS)**

\$ 3 2 5

\$ 3 7 5

JUNIOR

\$ 1 5 0

\$ 1 5 0

Unlimited

A D U L T

\$ 5 5 0

\$ 6 3 0

LIMITED PASS - GOOD ANYTIME MONDAY-FRIDAY & AFTER 11 AM ON WEEKENDS/HOLIDAYS

UNIMITED PASS - GOOD ANY TIME & DAY OF THE WEEK - NO RESTRICTIONS

PLAY FON DU LAC GOLF COURSE FOR NO ADDITIONAL COST ON EITHER PASS

JUNIOR PASS - GOOD FOR OPEN PLAY ANY TIME MON-SUN AT FON DU LAC GOLF COURSE AND AFTER 1:00 PM EVERY DAY AT QUAIL MEADOWS



QUAIL MEADOWS

Banquet Facility

CONTACT BRIDGET AT
BRIDGET@FONDULACPARK.COM
OR 309-694-3139 FOR MORE
INFORMATION.

Quail Meadows Banquet Facility is an ideal space for Weddings, Private Parties, Celebrations of all kinds as well as Corporate events. The panoramic views of the golf course landscape makes it a picturesque choice for any event.

Quail Meadows Banquet room is 2,200 square feet of open floor plan and offers a full-service bar, outside deck and patio, dance floor, projector, and audio. Capacity for banquet seated events is 160. Adding head tables, buffet tables, dance floor and photo booth may decrease seating capacity.



Quail Meadow's qualified event coordinator will work with you throughout the planning stages to make sure your event runs smoothly.



To help your special day be as wonderful as possible, we have the ability to have your wedding and reception all in one space. The Wedding Ceremony patio overlooks the water feature. Our newly added bride dressing suite can hold the bride and all her attendees in one large comfortable space.





THE COVEY

AT

QUAIL MEADOWS

LOCATION:

2215 Centennial Drive
Washington, IL 61571

PHONE:

(309)694-3139

HOURS

Monday-Thursday
9am-10pm
Friday & Saturday
8am-11pm
Sunday
8am-9pm

Featuring:

- 3 Full-Swing Simulators
 - 52 PGA Courses
 - Multi-Sport Entertainment with Football, Soccer, Darts, Skee Ball, and many more!
- Pool Table
- Dart Boards
- Golden Tee
- 9 Screens to Watch Live Sports
- Full Service Bar
- Touch Tunes

Rates

1/2 Hour \$30

1 Hour \$45

Rates are by the hour not by number of people playing on the simulator.

Up to 6 people can play stroke play on the simulator at one time.

Reserve the simulator for a minimum of 3 hours to play 18-holes with 4 people.

Tee times are highly recommended.

Indoor Players Discount Card - \$50

Valid November 15th - March 15th
Receive 5.00 off per simulator hour.
(Only card holder's portion if golfing with others)

Also includes:

20% off regular priced soft goods

10% off golf balls, clubs, and other hard goods

10% additional discount on most sale priced items

PARTY RENTALS

Have a celebration coming up? We would love for you to spend it with us! Perfect for Holiday Parties, Birthday Parties, Office Team Building Events, Retirement Parties, and Game Day Events!

Email bridget@fondulacpark.com for more information.

FON DU LAC

Golf Course

Green Fees

9-HOLES ADDITIONAL
9 HOLES

Adult (18-61)	\$13	\$6
Senior (62+)	\$11	
Junior (17 & Under)	\$6	

LOCATION:

123 Par Three Lane
East Peoria, IL 61611

PHONE:

(309) 699-4222

HOURS

April 15th -
October 15th

Monday-Sunday
7:00AM-7:00PM

Golf Cart & Club Fees

9-HOLES -
PER RIDER 18-HOLES -
PER RIDER

1/2 Cart	\$9	\$14
Pull Cart	\$6	
Club Rental	\$6	

Season Pass

RESIDENT NON-RES

Adult (18-61)	\$235	\$295
Senior (62+)	\$225	\$265
Junior (17 & Under)	\$50	\$50

Golf Player's Cards

QUAIL MEADOWS GOLF COURSE PLAYER'S CARDS - \$140

Includes all 3 facilities (Quail Meadows, The Covey, and Fon du Lac Golf Course).

WEEKDAY & WEEKEND
JAN 1 - MAY 1
OCT 1 - DEC 31

PRIME SEASON
WEEKDAYS
MAY 1 - SEPT 30

PRIME SEASON
WEEKENDS
MAY 1 - SEPT 30

18-Holes w/Player's Card at Quail Meadows	\$7.00	\$10.00	\$13.00
---	--------	---------	---------

ALSO INCLUDES:

- \$2.00 OFF ON 18-HOLE CART RENTAL
- 9-HOLES AT QUAIL MEADOWS FOR \$7 THROUGHOUT THE SEASON (NO 9-HOLE RATES BEFORE NOON ON WEEKENDS AND HOLIDAYS)
- 9-HOLES AT FON DU LAC GOLF COURSE FOR \$5 FOR ALL SEASON - 1ST 9 HOLES PLAYED ONLY
- \$5 OFF PER HOUR ON SIMULATOR USE AT THE COVEY (VALID NOVEMBER 15TH - MARCH 15TH)

THE COVEY INDOOR GOLF COURSE - \$50

Includes ONLY The Covey Indoor Golf Facility - Valid November 15th - March 15th

\$5 off per Simulator Hour

FON DU LAC GOLF COURSE PLAYER'S CARDS - \$85

Includes Fon du Lac Golf Course ONLY

First 9-Holes w/Player's Card - All Season	\$5.00
--	--------

ALL PASSES ALSO INCLUDE:

- 20% OFF REGULAR PRICED SOFT GOODS
- 10% OFF GOLF BALLS, CLUBS, AND OTHER HARD GOODS
- 10% ADDITIONAL DISCOUNT ON MOST SALE PRICED ITEMS

BRADLEY A. SMITH PARK

RECREATIONAL COURTS & SKATE PARK

CLOSED FOR THE SEASON - WILL REOPEN IN THE SPRING

LOCATION:

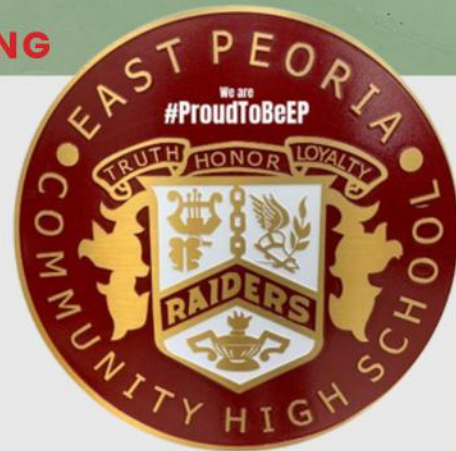
Bradley A. Smith Park
300 Block of
Springfield Road

HOURS

Monday - Sunday
7:00 AM - 10:00 PM

Park Features

- 10 PICKLEBALL COURTS
- 6 TENNIS COURTS
- 4 BASKETBALL HOOPS
- SKATE BOARD AREA
- ROLLERBLADE HOCKEY RINK

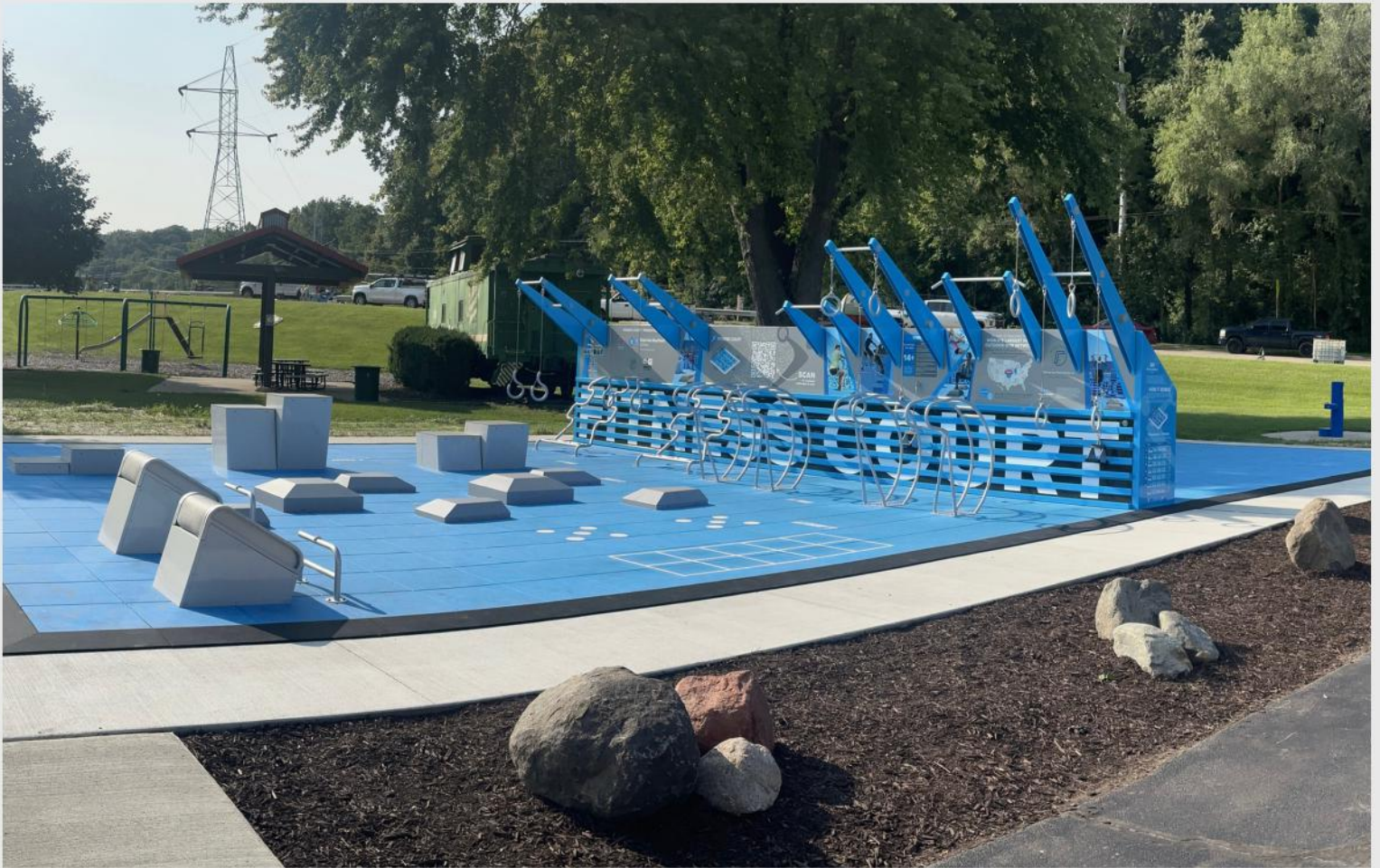


Fon du Lac Park District and East Peoria Community High School created 6 tennis courts on the site of the multi-purpose courts at Bradley A. Smith Park on Springfield Road through a joint project that began in 2024.

In the spring of 2023, the high school's previous "home" courts, on ICC's campus were destroyed in a storm and since then, the teams have been unable to host matches or tournaments while using the Peoria Country Club for practices. The multi-purpose courts at Bradley A. Smith Park were not up to standards required for competitive tennis. In exchange for priority usage for tennis practices and matches, the School District paid a portion of the rehabilitation costs. The Park District will also have half of the new courts striped for additional pickleball courts. The nets have been installed for the season and are ready to use!

OUTDOOR FITNESS COURT

at Fon du Lac Park District Administration Center
201 Veterans Drive
East Peoria, IL 61611



Scan the QR Code to
download the app for
a step-by-step guide
on how-to use the
court and equipment.



BlueCross BlueShield
of Illinois

★ EST. 1979 ★

**NATIONAL FITNESS
CAMPAIGN**

FITNESS COURT

SAVE • THE • DATE!



August 15th, 2026
10:00 AM - 1:00 PM



Veterans Park
403 Springfield Rd
East Peoria, IL



BRADY BARK PARK



Water fountains in both small and large dog areas.

LOCATION:

1800 Block of Cole Street
East Peoria, IL 61611

OPEN YEAR ROUND

Dawn to Dusk

Rules

The following rules are intended to protect everyone's use and enjoyment of the Park. Violation of park rules may result in a Citation or removal from the Park.

- Owners are responsible for cleaning up after their dog(s).
- Dogs must be leashed while entering and exiting the dog park.

Owners who are unsure of their dog's social ability should keep their dog on a leash until their dog is comfortable.

- No food, snacks, treats (for human or pet consumption), or glass containers are permitted in the dog park.
- Absolutely no aggressive dogs allowed!
- Owners are responsible for their dogs and any incident or injuries caused by them.
- All dogs must be up to date on their vaccines and healthy so as not to infect other dogs.
- Puppies under four months old and female dogs in heat are not permitted inside the dog park.
- Dogs must wear a collar and ID tag at all times.
- Children under the age of 14 must be accompanied by a responsible adult.

Please use and enjoy this park "at your own risk".

THE CARL "BUD" SCHMITT RIVER TRAIL OF ILLINOIS

PHASE 1

THIS 10-FOOT-WIDE ASPHALT TRAIL WINDS 4.8 MILES ALONG THE FORMER ILLINOIS TERMINAL RAILROAD CO. PATH. BUILT-IN 1991 WITH A MATCHING GRANT FROM THE IDNR, THE RIVER TRAIL PHASE I PROVIDES A SAFE, SCENIC ROUTE FOR OUTDOOR RECREATION YEAR-ROUND, WINTER WEATHER PERMITTING. THE TRAIL AFFORDS PATRONS THE OPPORTUNITY TO EXPERIENCE THE NATURAL PRESERVATION OF WILDFLOWERS, GRASSES, TREES, AND WILDLIFE.

WITH DIRECT ACCESS TO THE PARK ADMINISTRATION CENTER, BUNNELL FIELD, AND TAYLOR STREET BALL DIAMONDS, AND IN CLOSE PROXIMITY TO VETERANS PARK, CENTRAL JR. HIGH, WEST PARK, AND LOCAL RESTAURANTS, THE RIVER TRAIL OFFERS SOMETHING FOR EVERYONE.

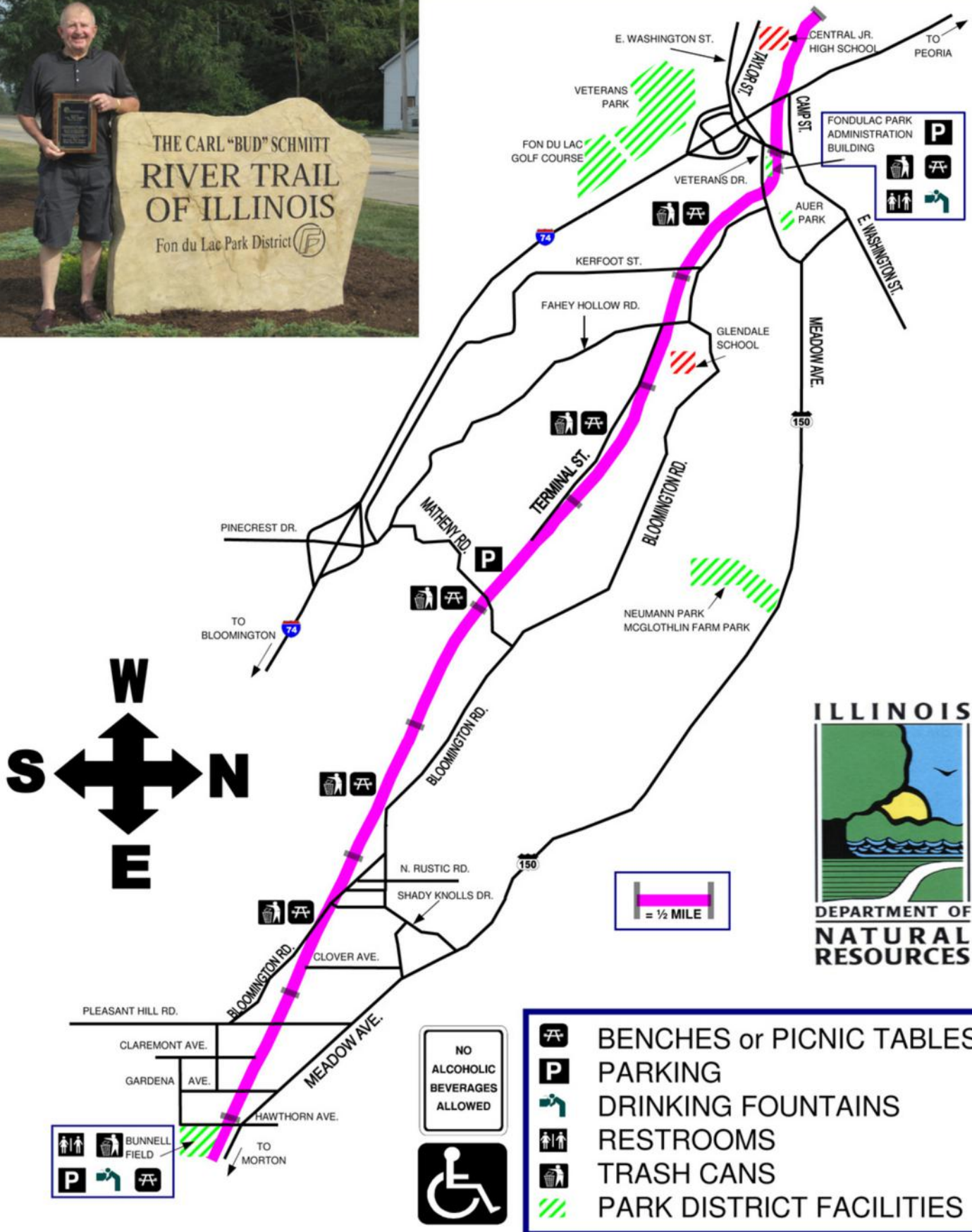


PHASE 2

THIS PHASE OF THE RIVER TRAIL WAS COMPLETED IN OCTOBER OF 1992. THIS SECTION OF THE TRAIL IS APPROXIMATELY 1.8 MILES IN LENGTH. 1200 LINEAR FEET OF THE TRAIL IS A SIX-FOOT WIDE BOARDWALK WITH THREE LARGE DECKS OVERLOOKING THE WETLAND AREA ADJACENT TO THE ILLINOIS RIVER. THE REMAINDER OF THE RIVER TRAIL IS A GRAVEL WALKWAY. ALL TRAIL SURFACES, SHELTERS AND RESTROOMS ON PHASE II MAY BE ACCESSED FROM BOTH COOPER PARKS AND SPINDLER MARINA.

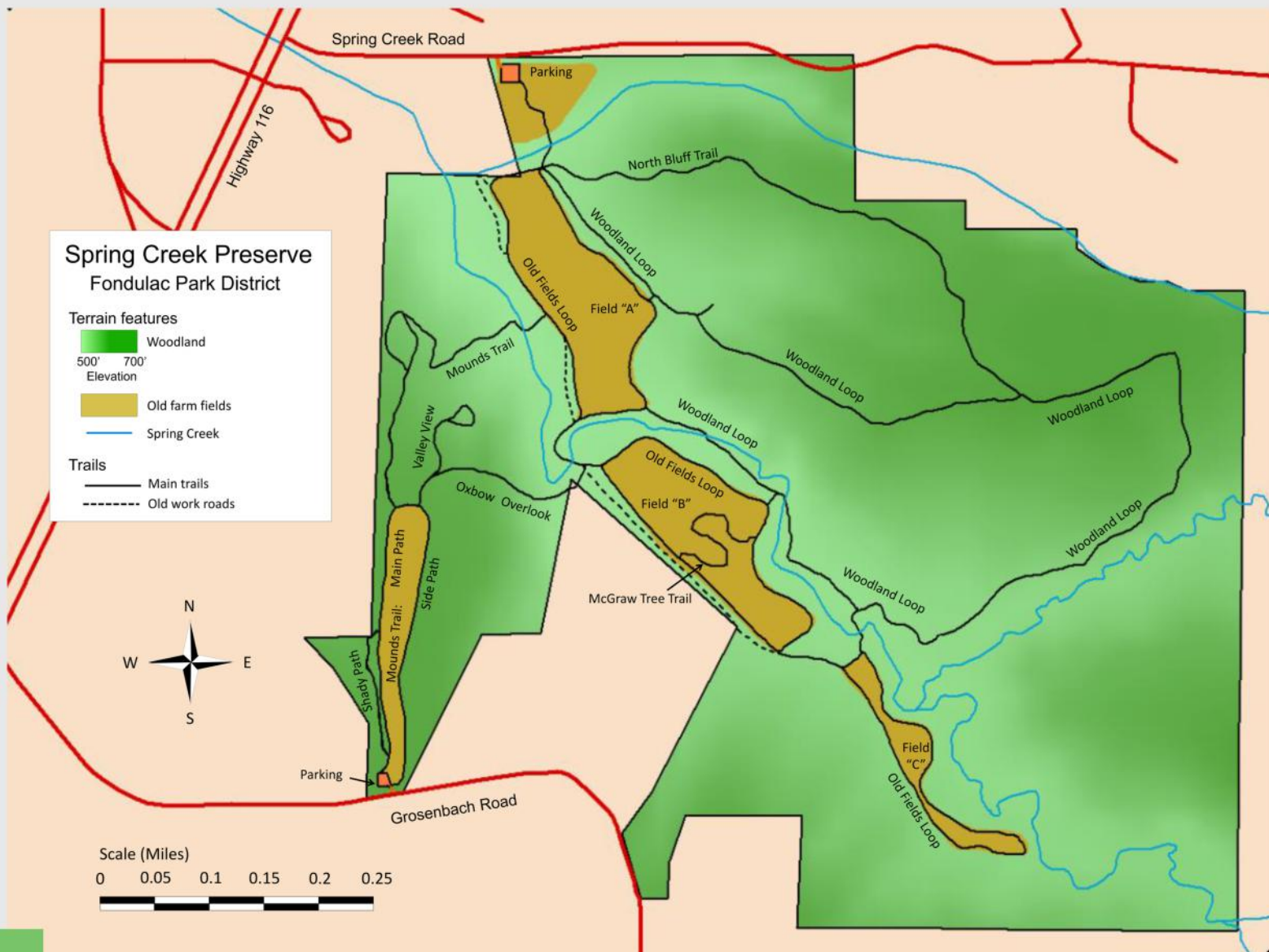


The Carl "Bud" Schmitt RIVER TRAIL OF ILLINOIS



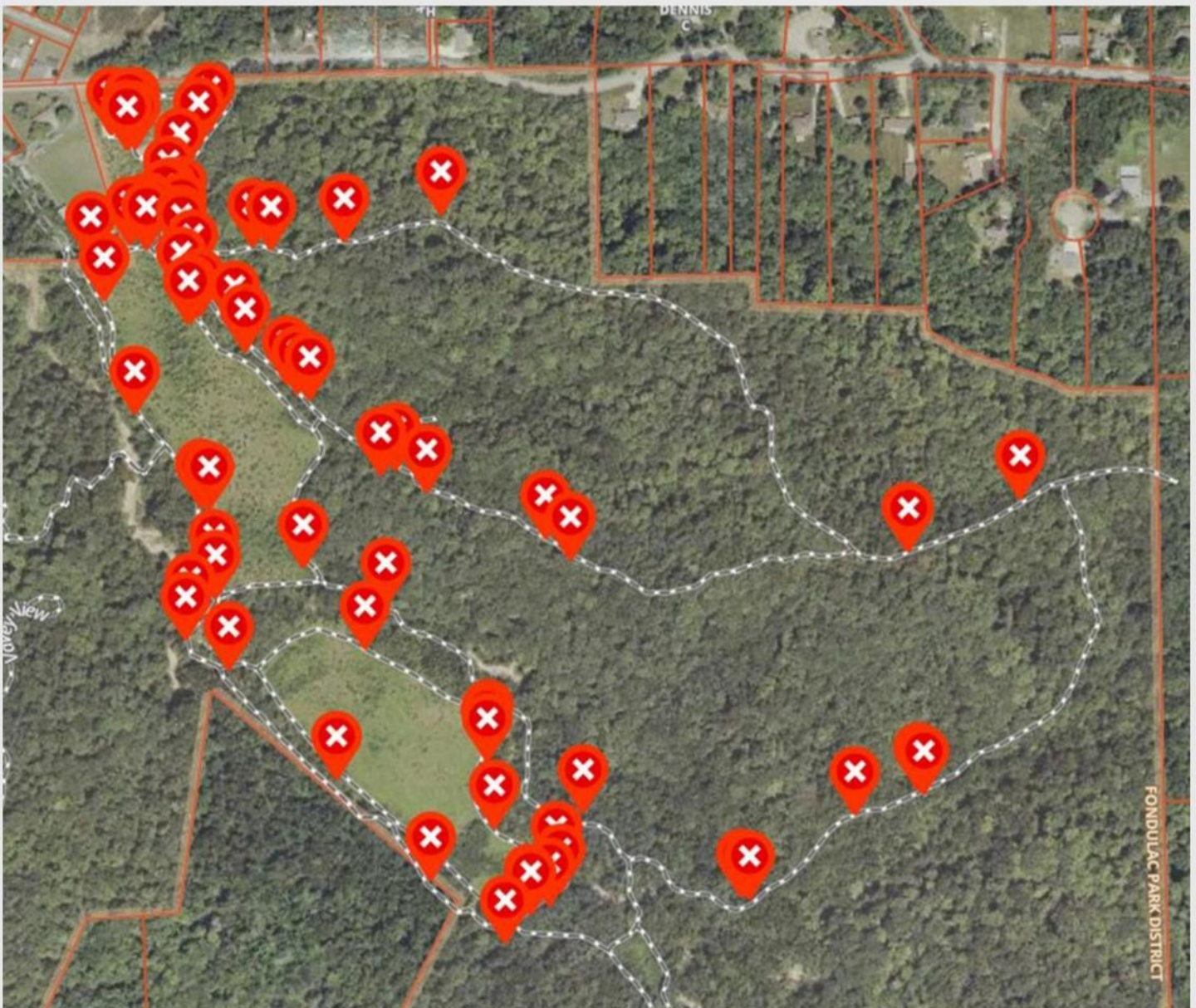
SPRING CREEK PRESERVE

The Fon du Lac Park District's Spring Creek Preserve consists of 262 acres of wooded bluffs, bottomland, and old farm fields and is managed as a natural area with hiking trails. The preserve is home to many species of birds, animals, butterflies, trees, shrubs, and wildflowers. Access is from Spring Creek Road. The parking lot is about 0.2 miles east of the intersection with Highway 116. The park is rather new and is still under development, but a number of hiking trails are now mowed and maintained and are accessible from the parking lot. The trails are marked with signs.



TREE IDENTIFICATION AT SPRING CREEK

The Preserve is a great place to learn about Central Illinois trees, shrubs, and woody vines. As an aid to visitors, forty-seven species have been tagged. These are readily accessible to hikers, being located along trails and near the parking lot. Locations are shown on the map below. The park district has a tree-identification/information webpage, which can be accessed with the QR code given here. This code appears on each tree tag as well.



COLE HOLLOW MONSTER

DISC GOLF COURSE

LOCATED AT BRADY PARK



SCAN HERE TO VIEW



INDIVIDUAL HOLE INFO

HOLE RULES AND NOTES

Water is casual. Discs landing inside dog park are OB.

	1	2	3	4	5	6	7	8	9	Out	10	11	12	13	14	15	16	17	18	In	Total
Par	3	3	3	3	3	4	3	3	3	28	3	4	3	3	3	3	3	3	3	28	56
Distance	300	289	252	225	230	382	226	334	324	2,562	235	523	348	258	243	245	241	243	336	2,672	5,234

Fon du Lac Park District's



FLASHBACK FLICKS IN THE PARK



FINDING NEMO (2003)
AUGUST 29TH, 2026
GRIEVES SHELTER

**FREE + OPEN TO THE
PUBLIC**

STARTS AT DUSK

Presented By: Fon du Lac Park District
Licensing via Swank Motion Pictures, LLC.

KIDS CONNECTION

LATCHKEY

Program is for children enrolled in East Peoria District #86 schools. The program is held at the Fon du Lac Park District Administration Center. The facility and program is not licensed or regulated by DCFS but is insured by IPARKS and inspected by Tazewell County Health Department.

PROGRAM OVERVIEW

MORNING HOURS: 6:30am until bus arrival

AFTERNOON HOURS: School dismissal until 6:00pm (½ days until 5:30pm)

GRADES: Kindergarten – 5th grade

FEES: \$11.00 per morning | \$11.00 per afternoon (\$110.00 for one child per week am & pm)

Early Dismissal Fees: \$11.00 per morning | \$15.00 per afternoon

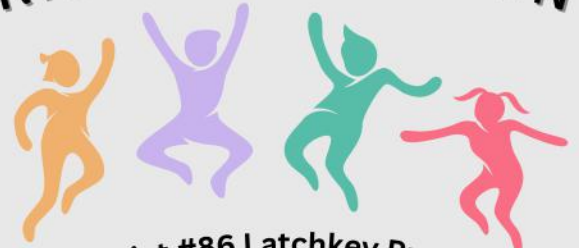
All Day Program: \$45/Child

A Registration Fee of \$30.00 per child is due at the time of registration for the school year 2025 – 2026. New registrations must be received at the Latchkey office no later than 5:30pm on Wednesday prior to the up-coming week. We need enough time to enter everything into the computer.

Physical & Immunization Records required.

Fon du Lac Park District's

KIDS CONNECTION



District #86 Latchkey Program

**KIDS CONNECTION
PROGRAM SUPERVISOR:**

SELENA QUEZADA

PHONE NUMBER:

(309) 699-4813

EMAIL:

KIDS@FONDULACPARK.COM

RAINBOW JUNCTION

Rainbow Junction is a structured play program for children 3, 4, and 5 year olds that will get them ready for Kindergarten. Our instructors will help your child develop new interests, refine large and small motor skills and develop a sense of independence and confidence.



Days: 5 days a week (Monday-Friday)

Times: 9:00am – 11:30am

Fees: \$135 – Fees are due at the first of each month

Age Requirement: Your child must be three years of age by September 2, 2025.


Location: Fon du Lac Park District Administration Center, 201 Veterans Drive, East Peoria

Children entering Rainbow Junction must be potty-trained and able to take care of his/her own bathroom needs.

Register in person at the Fon du Lac Park District Administration Center. A \$30 materials fee is due when registering your child.



TRUCKS + TRADES

When: Saturday, 
September 26th
9:00 AM - Noon

Where: Veterans Park
403 Springfield Road
East Peoria, IL 61611

**FREE
PUBLIC
EVENT**

-Big trucks, cool tools,
and hands-on fun
-Explore vehicles and
trades up close
-Meet real workers like
welders & plumbers
-Kid-friendly activities,
photo ops & more



Roofing



Dog Grooming



Presented by:
Fon du Lac
Park District



Welding



FONDULAC

TUMBLING

PARK DISTRICT

CLASS LOCATION:
350 CIMMERON DRIVE
EAST PEORIA, IL 61611

QUESTIONS?
(309) 699-3923
FONDULACPARK.COM
SUPPORT@FONDULACPARK.COM

CRAWLERS (30 MIN)

Must be a good crawler

Let your little one explore our gym from the ground up! In this parent participation class, we'll focus on activity and fun—standing, cruising, balancing, bouncing, and all things crawling! The goal is to help your *Crawler* grow into a *Walker* while getting comfortable in our facility.

WALKERS (30 MIN)

Must be a good walker

This parent participation class is designed for little ones who are confident walkers and ready to explore with friends! It gives your child the chance to interact with other children, building early social skills that support lifelong development. Your child will continue working on balance, jumping, and getting ready to roll, all while moving, playing, and having fun in a nurturing environment.

RUNNERS (45 MIN) (2-3 YO)

You and your active child (parent participation required) will explore the whole gym, working on rolling, balancing, and jumping! This class is all about fun and movement. Children will begin to follow directions, work well with others, and build strength and fitness while improving their gross motor skills through tumbling.

PRE-SCHOOL (45 MIN) (4-5 YO)

This class helps preschoolers transition from our younger tumble programs into the Beginner level and become confident and comfortable without their parents by their side. Children continue developing coordination, strength, and confidence while practicing foundational skills.

BEGINNER (5-7 YO) (60 MIN)

This class is a starting point for young tumblers or a continuation from our preschool program. Participants build a strong foundation in tumbling through basic skills like rolls, bridges, handstands, and cartwheels. The focus is on developing strength, balance, coordination, confidence, and safe practice through age-appropriate drills and fun activities.

BEGINNER (8&UP) (60 MIN)

This class is for older beginners, either just starting tumbling or continuing from younger programs. Students work on foundational skills such as rolls, bridges, handstands, cartwheels, and round-offs, while building strength, coordination, and confidence. Instruction emphasizes proper form, body control, and safe practice in a structured, encouraging environment.

ADVANCED BEGINNER (60 MIN)

For tumblers who have mastered beginner skills and are ready to advance, this class introduces limbering skills such as back walkover, front limbering, and flexibility exercises. Students continue building strength, coordination, and confidence while practicing proper technique and body control. This level prepares participants for Back Handspring class.

BACK HANDSPRING (60 MIN)

This class is for students who have completed the Advanced Beginner level and are ready to learn back handsprings. Students receive guided spotting, individualized feedback, and structured drills to safely develop back handsprings, build confidence, and prepare for more advanced tumbling skills.

FONDULAC PARK DISTRICT

TUMBLING

CLASS LOCATION:
350 CIMMERON DRIVE
EAST PEORIA, IL 61611

QUESTIONS?
(309) 699-3923
FONDULACPARK.COM
SUPPORT@FONDULACPARK.COM

MAX CLASS SIZE FOR ALL CLASSES: 12

MONDAY

FEB 23 — MAR 23 (OFF FEB 16TH)

CRAWLER	9:30 - 10:00 AM	R\$30/NR\$35
WALKER	10:00 - 10:30 AM	R\$30/NR\$35
RUNNER	10:30 - 11:15 AM	R\$45/NR\$50
PRE-SCHOOL	11:15 - 12:00 PM	R\$45/NR\$50

CRAWLER	4:30 - 5:00 PM	R\$30/NR\$35
BEGINNER(5-7)	4:30 - 5:30 PM	R\$60/NR\$70
WALKER	5:00 - 5:30 PM	R\$30/NR\$35
RUNNER	5:30 - 6:15 PM	R\$45/NR\$50
BEGINNER(8&UP)	5:30 - 6:30 PM	R\$60/NR\$70
PRE-SCHOOL	6:15 - 7:00 PM	R\$45/NR\$50
ADV BEGINNER	6:30 - 7:30 PM	R\$60/NR\$70

TUESDAY

FEB 17 — MAR 24

RUNNER	9:30 - 10:15 AM	R\$54/NR\$60
PRE-SCHOOL	10:15 - 11:00 AM	R\$54/NR\$60
WALKER	11:00 - 11:30 AM	R\$36/NR\$42
CRAWLER	11:30 - 12:00 PM	R\$36/NR\$42

CRAWLER	4:30 - 5:00 PM	R\$36/NR\$42
BEGINNER(8&UP)	4:30 - 5:30 PM	R\$72/NR\$84
WALKER	5:00 - 5:30 PM	R\$36/NR\$42
PRE-SCHOOL	5:30 - 6:15 PM	R\$54/NR\$60
BEGINNER(5-7YO)	5:30 - 6:30 PM	R\$72/NR\$84
RUNNER	6:15 - 7:00 PM	R\$54/NR\$60
BHS	6:30 - 7:30 PM	R\$72/NR\$84

WEDNESDAY

FEB 18 — MAR 25

NO MORNING CLASSES

CRAWLER	4:30 - 5:00 PM	R\$36/NR\$42
BEGINNER(8&UP)	4:30 - 5:30 PM	R\$72/NR\$84
PRE-SCHOOL	5:00 - 5:45 PM	R\$54/NR\$60
BEGINNER(5-7)	5:30 - 6:30 PM	R\$72/NR\$84
WALKER	5:45 - 6:15 PM	R\$36/NR\$42
RUNNER	6:15 - 7:00 PM	R\$54/NR\$60
BHS	6:30 - 7:30 PM	R\$72/NR\$84

THURSDAY

FEB 19 — MAR 26

WALKER	9:30 - 10:00 AM	R\$36/NR\$42
CRAWLER	10:00 - 10:30 AM	R\$36/NR\$42
PRE-SCHOOL	10:30 - 11:15 AM	R\$54/NR\$60
RUNNER	11:15 - 12:00 PM	R\$54/NR\$60

CRAWLER	4:30 - 5:00 PM	R\$36/NR\$42
BEGINNER(5-7YO)	4:30 - 5:30 PM	R\$72/NR\$84
RUNNER	5:00 - 5:45 PM	R\$54/NR\$60
BEGINNER(8&UP)	5:30 - 6:30 PM	R\$72/NR\$84
WALKER	5:45 - 6:15 PM	R\$36/NR\$42
PRE-SCHOOL	6:15 - 7:00 PM	R\$54/NR\$60
ADV BEGINNER	6:30 - 7:30 PM	R\$72/NR\$84

SATURDAY CLASSES COMING SOON

REGISTER HERE

SCAN THE QR CODE OR VISIT FONDULACPARK.COM





CLASS LOCATION:
350 CIMMERON DRIVE
EAST PEORIA, IL 61611

QUESTIONS?
(309) 699-3923
FONDULACPARK.COM
SUPPORT@FONDULACPARK.COM

Fon du Lac Park District Tumbling Policies and Procedures

Class Fees, Payment, Pro Rating:

All payments are due at registration. Class attendance will be taken by our instructors. If there are spots available and you sign up for a class after the session has started, we will pro rate the number of classes left in the session. We will not pro rate a session for missed classes. Class sizes are limited so advance registration is highly recommended to keep the day and time you require.

Multi-Class Discounts: (10% off)

This discount is applicable when a student is enrolled in multiple classes for the same session. The first class must be paid at full rate each session before additional classes are discounted.

Multi-Student Discounts: (10% off)

This discount is applicable when additional members of the household are enrolled for the same session (does not have to be the same class or day of the week). The first student must be paid at full rate each session before discount can be applied.

Missed Classes:

Every class will allow 3 spots for make-up. You must go online or call the office (309) 699-3923 and be registered for the makeup spot for that class prior to attending the make-up class. Fon du Lac Park District cannot guarantee make up spot availability.

Refunds:

A refund for withdrawing from a class will only be given for the remaining classes of the session. You cannot be refunded for any previous classes that were missed. If you withdraw your student before the session starts a full refund will be given.

Appropriate Apparel:

Females – leotards, shorts and tight shirts. Males – tank tops or tight shirts and shorts. Everyone needs to bring clean socks or trampoline shoes.

Waiver:

A tumbling waiver must be signed for all new students and renewed on a yearly basis. The waiver must be signed in your DASH by Daysmart Account.

Fon du Lac Park District: 309-699-3923 | support@fondulacpark.com | www.fondulacpark.com

FONPU-LAC

PARK DISTRICT

TUMBLING

**DOES YOUR KIDDO HAVE
A BIRTHDAY COMING UP?**

**CELEBRATE
WITH US!**

WHAT IS INCLUDED?

- PRIVATE USE OF THE GYM FOR 2 HOURS
- 2 PARTY HOSTS
- UP TO 20 CHILDREN + THE BIRTHDAY CHILD!

WHAT IS THE COST?

\$250

MINIMUM OF \$50 DEPOSIT DUE
WHEN YOU BOOK, REMAINDER
WILL AUTO-PAY 7 DAYS PRIOR TO
THE PARTY
(DEPOSIT IS FORFEITED IF CANCELLED
WITHIN 30 DAYS OF PARTY DATE)

**WHEN ARE PARTIES
OFFERED?**

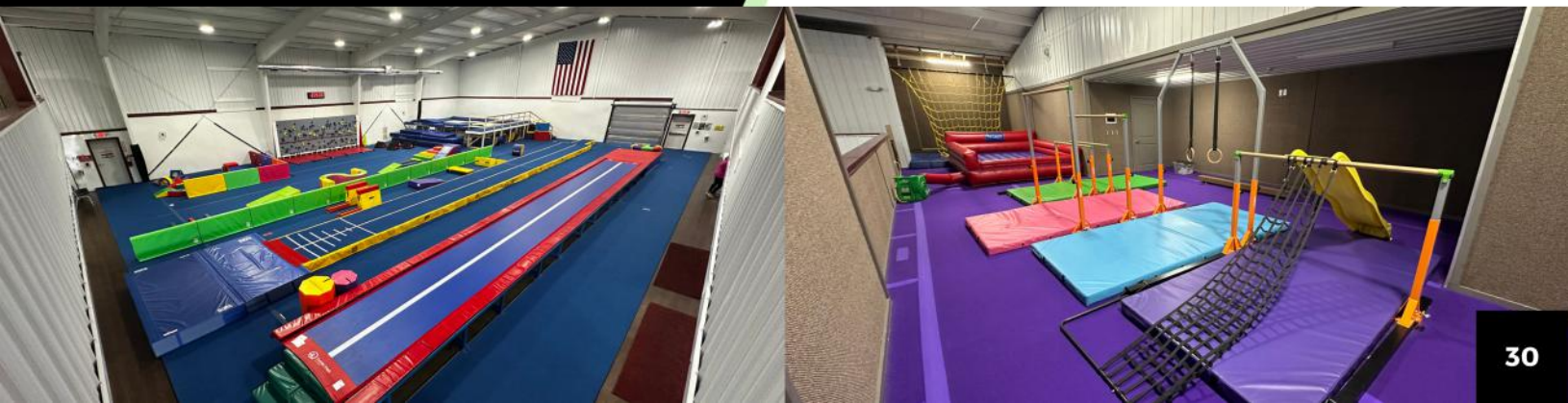
FRIDAY
5:30 - 7:30 PM

SATURDAY
10:00 AM - NOON
1:00 PM - 3:00 PM
4:00 PM - 6:00 PM

HOW CAN I BOOK?

GIVE US A CALL
MONDAY - THURS 8 AM - 4 PM
OR FRIDAY 8 AM - 2 PM

(309) 699-3923



FONDULAC PARK DISTRICT



SPORTS FOR TOTS

FOR AGES 2 & 3 YEARS OLD

SPRING SESSION

**TENNIS &
T BALL**

TUESDAY-

4/21, 4/28, 5/5, 5/12

WEDNESDAY-

4/22, 4/29, 5/6, 5/13

SUMMER SESSION

**SOCCER &
FOOTBALL**

TUESDAY-

8/11, 8/18, 8/25, 9/1

WEDNESDAY-

8/12, 8/19, 8/26, 9/2

FALL SESSION

BASKETBALL

TUESDAY-

10/13, 10/20, 10/27, 11/3

WEDNESDAY-

10/14, 10/21, 10/28, 11/4



AVAILABLE CLASS TIMES

(SAME FOR ALL
SESSIONS)

Tuesday

10:00 - 10:45 AM

5:30 - 6:15 PM

Wednesday

10:00 - 10:45 AM

2:00 - 2:45 PM

5:30 - 6:15 PM

HOW TO REGISTER:

ONLINE: FONDULACPARK.COM

OVER THE PHONE: (309) 699-3923

IN-PERSON: 201 VETERANS DRIVE

OR SCAN THE QR CODE

COST (PER SESSION):

RESIDENT: \$35

NON-RESIDENT: \$45

\$5 OFF EACH
ADDITIONAL
SIBLING



2026 GIRLS FAST PITCH SOFTBALL



DIVISIONS:

BUNNY: AGES 5 TO 7

LIL LETTE: AGES 8 TO 10

LASSIE: AGES 11 TO 13

JUNIORS: AGES 14 TO 18

GAMES/PRACTICE:

GAME DATES:

(BUNNY, LIL LETTES, & LASSIE – **JUNIORS SCHEDULE IS TBD**)

JUNE 3RD, 10TH, 17TH, 24TH, 29TH (WEDNESDAY)

JULY 1ST, 6TH, 8TH, 13TH, 15TH (MONDAY & WEDNESDAY)

ALL GAMES WILL BE PLAYED AT EASTSIDE CENTRE.

PRACTICE:

ONE PER WEEK TBD BY COACHES.

EQUIPMENT:

SOFTBALL GLOVES AND DEFENSIVE FIELDING MASKS **REQUIRED**.

MOLDED CLEATS OR TENNIS SHOES ARE ALLOWED FOR THE LEAGUE.

NO METAL CLEATS ALLOWED.

ALL OTHER EQUIPMENT WILL BE PROVIDED.

EARLY BIRD REGISTRATION

Now - February 28th

COST:

	FIRST CHILD	EACH ADD'L CHILD
RESIDENT	\$80	\$75
NON-RESIDENT	\$90	\$85

PRICING EFFECTIVE THROUGH FEBRUARY 28TH - PRICES INCREASE MARCH 1ST



Registration Closes April 30th

How To Register:

(309) 699-3923

fondulacpark.com

Scan the QR Code



ADULT SLOW PITCH SOFTBALL

CO-ED LEAGUE
\$400/TEAM

REGISTRATION OPEN
NOW!

SCAN HERE FOR
FULL PROGRAM
INFORMATION
AND LINK TO
REGISTER





Whether you're a beginner or an experienced martial artist, our instructors are dedicated to helping you achieve your goals.

FON DU LAC TAE KWON DO

- To discipline mind, body and spirit.
- To be courteous, honest and sincere.
- To build good character.
- To build confidence, humility and endurance.
- To seek truth and practice it.
- To never fight to achieve selfish ends but to develop might for right



RESIDENT

NON-RES

\$30/\$35 /MONTH

TUESDAY & THURSDAY

6:00 - 7:00 PM

201 Veterans Drive
East Peoria, IL 61611

REGISTER NOW



fondulacpark.com



(309) 699-3923





(309) 694-0138
EXECUTIVE DIRECTOR
STEVE CORDLE - EXT. 2

Box Office Location:
2200 E. Washington Street
East Peoria, IL 61611
Theater Location
Byron Moore Auditorium
East Peoria High School
1401 E Washington St.
East Peoria, IL 61611



Scan here for Eastlight's Website ↗

Eastlight Theatre was created by an Intergovernmental Agreement between three local entities: the City of East Peoria, the Fon du Lac Park District, and the East Peoria Community High School. These three governmental bodies recognized the need to cooperate to assist each other in the achievement of a number of benefits for the community. The City views Eastlight as a means of furthering its goals and quality of life for the individuals of the area by the offering of excellent family entertainment. The Park District views Eastlight as a means of furthering its goals and objectives of providing additional and new means of artistic programming to individuals of the area by the offering of entertainment and the establishment of workshops, seminars, and drama camps. The School District views Eastlight as a means of furthering its goals and objectives of providing further recognition and enhancement to its drama department as well as providing further drama opportunities for its students. These shared goals and objectives inspired these governmental bodies to pool their resources and strengths for the creation of one of the most unique community theatres in the nation. The purpose of Eastlight Theatre is to provide and promote the dramatic arts by delivering performances of the highest theatrical quality; to provide a forum for the performance of new plays and musicals; to contract with "outside" professionals to improve the quality of selected performances; and to initiate an educational program to help develop the artistic and dramatic talents of the tri-county area youth and adults. With the continued support of the City of East Peoria, the Fon du Lac Park District, and East Peoria Community High School, Eastlight Theatre will be around for many years to come.

Once a year, a magical and touching celebration of the human spirit unfolds at Eastlight Theatre in East Peoria, Illinois. A group of children in a program called The Penguin Project® take to the stage to perform a modified version of a well-known Broadway musical. This production is unique, however, because all of the roles are filled by children with developmental disabilities including Down syndrome, cerebral palsy, autism, intellectual disabilities, learning disabilities, visual impairment, hearing impairment, and other neurological disorders. They are joined on stage by their "peer mentors", a group of children the same age without disabilities, who have volunteered to work with them side-by-side and guide them through 4 months of rehearsals and the final production. By creating unrestricted access to the performing arts, The Penguin Project® demonstrates that the special challenges of a disability need not handicap a child's ability to participate in life's experiences.



East Peoria Jazzercise

Fon du lac Park District - 201 Veterans Dr.

Sun	Mon	Tues	Wed	Thurs	Fri	Sat
	6:30 am		6:30 am			
			7:25 am			7:25 am
8:00 am	8:00 am	8:00 am	8:00 am	8:00 am	8:00 am	8:00 am
	9:00 am	9:00 am	9:00 am	9:00 am		9:00 am
4:30 pm	4:30 pm	4:30 pm	4:30 pm	4:30 pm	4:30 pm	
	5:40 pm	5:40 pm	5:40 pm	5:40 pm		

MORE INFO

Contact us!

Owner: Janelle Keyes-Lutz

Call: (309) 840 - 0544

Email: eastpeoriajazzercise11@gmail.com





SENIOR PROGRAMS

“We don’t stop playing when we grow old, we grow old when we stop playing.”

More than a catchy phrase, this is a concept to embrace. The longer we ‘play’, the better we feel physically, spiritually, and emotionally, according to countless studies from organizations such as the National Institute on Aging to AARP. The synonyms for the word play may be more appealing to adults. They include fun, recreation, sport, amusement, enjoyment, and entertainment. So there is the proof, according to Webster. Playing is not reserved for children. It is ageless.

The Fon du Lac Park District is dedicated to the idea that leisure is an important component of life. A large variety of programs and outings are offered every month to give adults opportunities to enjoy leisure time, promote social connections, stimulate the mind, and experience fun. Participants do not have to reside in East Peoria, and adults of all ages can participate.

For outings and day trips, our luxurious 25-passenger mini bus is utilized. Outings originate from the Fon du Lac Park District’s Administration Center unless otherwise specified, as do most of the programs and classes.

WANT TO RECEIVE A COPY OF THE NEWSLETTER? Give us a call at (309) 699-3923 or fill out the form on our website fondulacpark.com

BILLIARDS ROOM

**201 VETERANS DRIVE
EAST PEORIA, IL 61611**

Open Monday-Thursday 8AM-4PM and Friday 8am-1:30PM.
There are pool cues available for use.
Tables are 8-foot long and we have 7 tables available for use.

Cost is \$1/day for unlimited games or we do have a yearly pool room pass (\$75/year for resident and \$100/year for non-resident).

Pool League Information:

- Starts Thursday, October 2nd and runs through March
- Monday and/or Thursday afternoons from 11:45-3:00 PM
- 55 or older
- 8-Ball Doubles



RENTALS

ADMINISTRATION BUILDING

201 VETERANS DR
EAST PEORIA, IL 61611



Fon du Lac Park District Administration Center offers a variety of rooms to rent for your event. Whether it is a civic or business organization, birthday or retirement party, graduation or anniversary party, we offer a variety of rooms to accommodate your needs. Rental fees are based on an hourly rate according to the number of room(s) used and the amount of time the room(s) are reserved. The Park District always has an employee in the building during your rental time. Included in your rental fees are: tables, chairs, room set-up and tear down. Our Administration Center offers ample parking for your event.

Room	2.5 Hours	3 Hours	4 Hours	6 Hours	8 Hours	10 Hours**	Room Deposit**
JKLM (260 people)		\$300	\$350	\$450	\$550	\$650**	\$100.00
JKL (195 people)		\$270	\$310	\$390	\$470	\$560**	\$100.00
J&K (130 people)		\$240	\$270	\$330	\$390	\$450**	\$100.00
L&M (130 people)		\$230	\$260	\$320	\$380	\$440**	\$100.00
D&E (80 people)	\$135	\$145	\$170	\$220	\$270	\$320**	\$100.00
L (65 people)	\$120	\$130	\$155	\$205	\$255	\$305**	\$50.00
M (65 people)	\$120	\$130	\$155	\$205	\$255	\$305**	\$50.00

Pricing updated 1/1/2024

Non-Resident Fees Add \$10.00 to rate	**Additional \$50.00 room deposit for room rentals exceeding 8 hours
---------------------------------------	--

FOR MORE
INFORMATION OR TO
CHECK AVAILABILITY

Call: (309) 699-3923
Email: alison@fondulacpark.com

RENTALS SHELTERS



2 SETS OF PERMANENT CORNHOLE BOARDS – BRING YOUR OWN BAGS

FON DU LAC PARK WEST

400 Block Springfield Rd. (West Side)

Open Sunrise to 9:00pm 7 Days a Week

Shelter Info: Accommodates up to 150 People with 25 Picnic Tables, Accessible Public Restrooms, 20 Amp Electric Service, Night Lighting, Parking, Playground, Drinking Fountain, Grill, and Two Permanent sets of Cornhole (Just bring own bags)

CLOSED FOR REMODEL

NEUMANN PARK SHELTER #1

305 Neumann Drive off Meadows Ave. (Rt. 150)

Open Sunrise to 9:00pm 7 Days a Week

Shelter Info: Accommodates up to 50 People with 8 Picnic Tables, Public Restrooms, 20 Amp Electric Service, Limited Night Lighting, "All Inclusive" Playground, Grill, Parking, and Drinking Fountain.



VETERANS SHELTER (Veterans Park)

400-500 Block of Springfield Rd. (East Side)

Open Sunrise to 9:00pm 7 Days a Week

Shelter Info: Accommodates up to 100 People with 18 Picnic Tables, Close Access to Public Restrooms, 40 Amp Electric Service, Close Parking, Night Lighting, Drinking Fountain, Grill, and Playground.

Shelter Rentals

You may reserve the following six shelters beginning in January for that year only. The rental season for shelters is April 15-October 15. For weddings, please call the Park District for advanced reservations. The Park District only reserves the shelter to one person per day. Shelters are open Sunrise to 9:00pm, 7 Days a Week.

No Alcohol or Confetti allowed on premises.

Requirements:

- A signed shelter recreation agreement with payment
- \$50 Rental Fee – Residents
- \$60 Rental Fee – Nonresidents
- \$50 Damage Deposit Fee – will be refunded within 10 days of shelter rental if no damage is done to shelter and/or garbage is picked up and put in garbage cans. We accept Cash, Check, Visa, MasterCard, and Discover.

If picnic tables need to be removed from the shelter, add \$100 to the Rental Fee.

Reserving a Shelter:

Stop by the Park District Administration Center or Call (309) 699-3923.

Other Park shelters available on a first come first served basis; Doering Park, Cooper North and South, Stiers Park, and Spinder Park.



NEUMANN PARK SHELTER #2

305 Neumann Drive off Meadows Ave. (Rt. 150)

Open Sunrise to 9:00pm 7 Days a Week

Shelter Info: Accommodates up to 60 People with 10 Picnic Tables, Close Access to Public Restrooms, 40 Amp Electric Service, Limited Night Lighting, Playground, Grill, and Parking.



GRIEVES SHELTER (Veterans Park)

400-500 Block of Springfield Rd. (East Side)

Open Sunrise to 9:00pm 7 Days a Week

Shelter Info: Accommodates up to 150 People with 25 Picnic Tables, Close Access to Public Restrooms, 40 Amp Electric Service, Limited Night Lighting, Drinking Fountain, Grill, Fire Ring, Playground, and Parking.



MIDDLE SHELTER (Veterans Park)

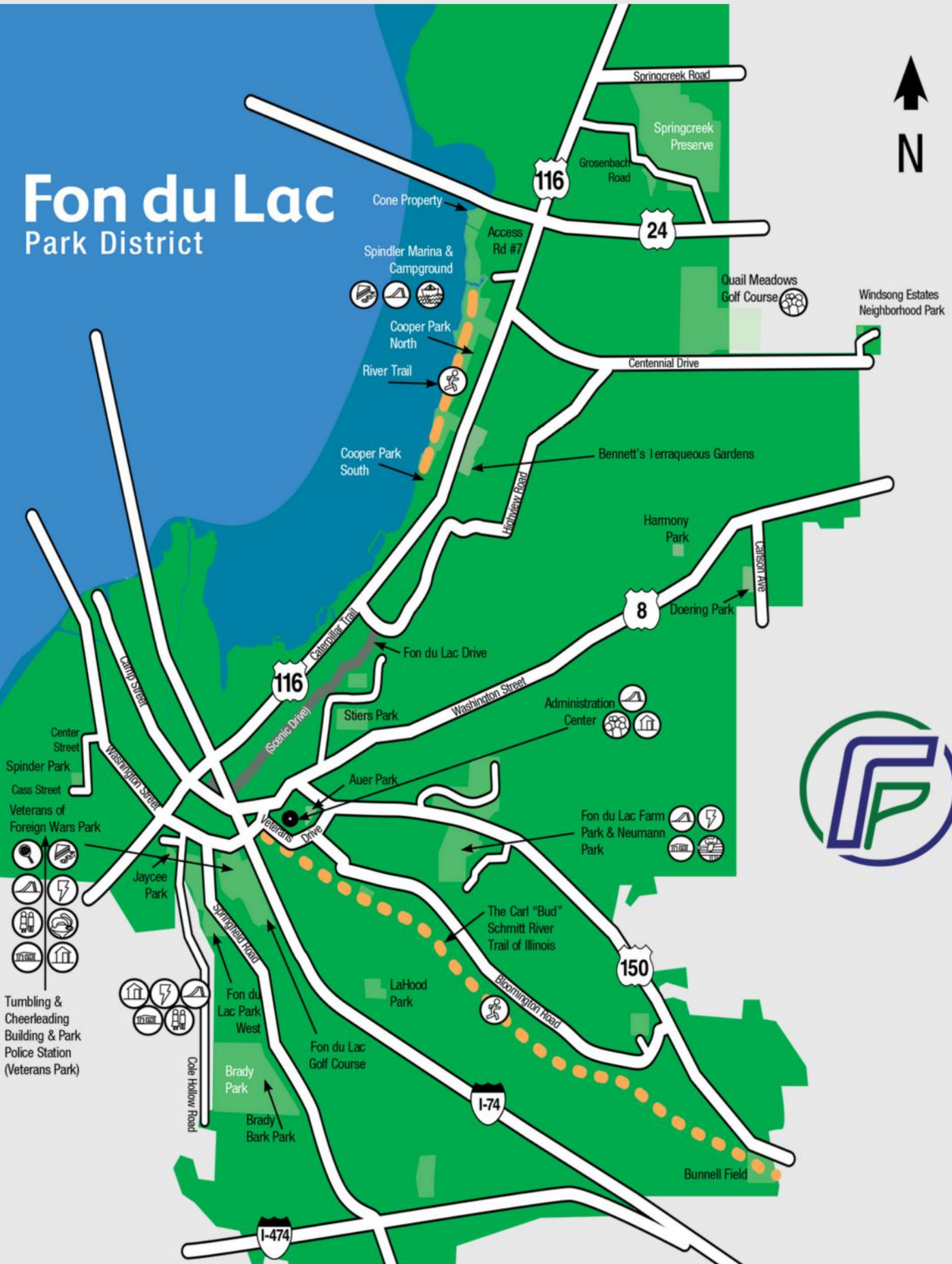
400-500 Block of Springfield Rd. (East Side)

Open Sunrise to 9:00pm 7 Days a Week

Shelter Info: Accommodates up to 60 People with 10 Picnic Tables, Close Access to Public Restrooms, 40 Amp Electric Service, Night Lighting, Close Parking, Playground, Drinking Fountain, and Grill.

Fon du Lac

Park District



- | | | | | | |
|------------|------------------|----------------|----------------------|--------------------|-----------------|
| Playground | Electricity | Boat Ramp | Jogging/Walking Area | Tennis Courts | Picnic Area |
| Restrooms | Shelter/Pavilion | Water Fountain | Meeting/Banquet Room | Farm Park & Museum | Pavilion Rental |

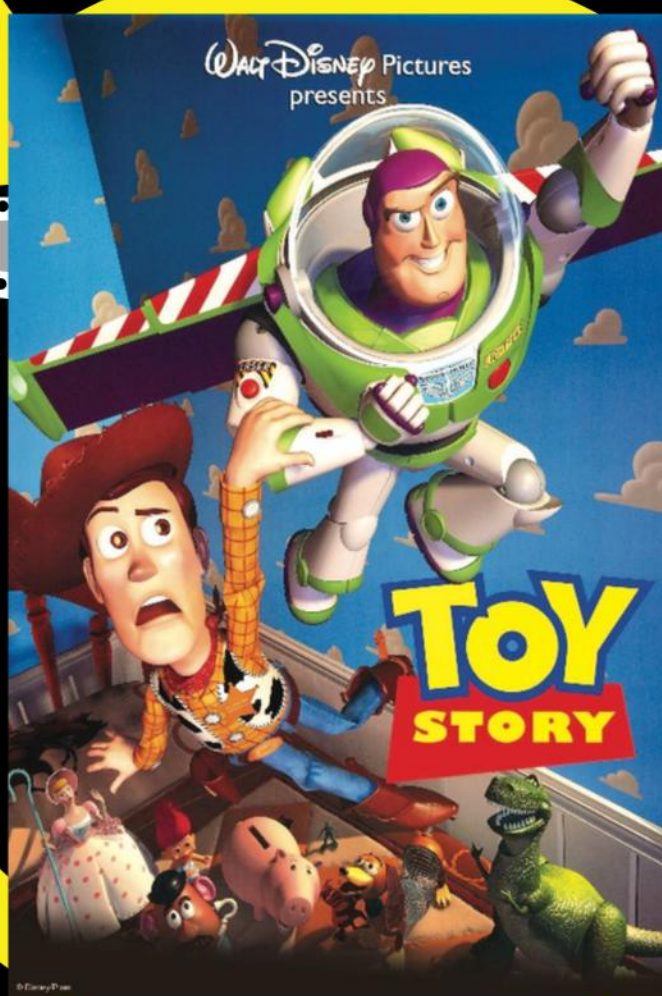


PARK / PROPERTY NAME	ACREAGE	PLAYGROUND APPARATUS	BALL DIAMOND	PICNIC AREA	RECREATION BUILDING	TENNIS / PICKLE BALL COURTS	FISHING & BOAT RAMPS	MEETING / BANQUET ROOMS	UNDEVELOPED	RESTROOMS	HORSESHOE OR CORNHOLE	WALKING / HIKING TRAIL	SCENIC DRIVE	SHELTER / PAVILION	WATER FOUNTAIN	GOLF	INDOOR GOLF/BAR	DRIVING RANGE	MUSEUM / PETTING ZOO	RENTAL AVAILABILITY	NATURE PRESERVE	CAMPING	ELECTRICITY	DISC GOLF	DOG PARK	FARM FIELD	BIKE TRAIL	POLICE DEPARTMENT	BASKETBALL COURT	SENIOR CENTER
VETERANS / BRADLEY SMITH PARK	101	•	•	•	•	•				•		•	•	•	•				•	•			•					•	•	
FON DU LAC PARK WEST	12	•	•							•				•	•					•								•		
JAYCEE PARK	1.5	•	•	•										•																
SPINDER PARK	3.5	•	•	•				•		•				•										•						
BRADY PARK	155	•	•	•						•	•	•		•	•									•						
ADMINISTRATION CENTER	4	•	•	•				•		•				•	•															
MARTHA CUNNINGHAM PARK	0.25			•																										
AUER PARK	1.75	•	•	•																										
LA HOOD PARK	0.25	•	•																											
FON DU LAC GOLF COURSE	30							•		•						•														
COOPER PARK (NORTH & SOUTH)	228	•	•	•																										
TERRAQUEOUS GARDENS	18																													
CARL SPINDLER CAMPGROUND / MARINA	36	•	•	•						•				•																
GEORGE DOERING PARK	19	•	•	•						•	•			•																
HARMONY PARK	1.5	•	•	•																										
NEUMANN PARK / FON DU LAC FARM PARK	86	•	•	•						•				•																
SHADY KNOLLS	0.25								•																					
BUNNELL FIELD	2		•												•															
QUAIL MEADOWS GOLF COURSE	150							•							•	•	•													
SPRING CREEK PRESERVE	342																				•									
FON DU LAC DRIVE	1.5 miles																													
RIVER TRAIL OF ILLINOIS (PHASE I)	4.8 miles																													
RIVER TRAIL OF ILLINOIS (PHASE II)	1.8 miles																													
STIERS FAMILY PARK	10	•																												
CONE PROPERTY	19																													
WINDSONG ESTATES PARK	1.5	•	•																											
KEIL PROPERTY	86																													
TUMBLING ACADEMY	Leased																													

Fon du Lac Park District's



FLASHBACK FLICKS IN THE PARK



TOY STORY (1995)
OCTOBER 3RD, 2026
GRIEVES SHELTER

**FREE + OPEN
TO THE PUBLIC**

**STARTS AT
DUSK**

Presented By: Fon du Lac Park District
Licensing via Swank Motion Pictures, LLC.



NEUMANN PARK

All Inclusive Playground
305 Neumann Drive
Adjacent to the Farm Park



This playground is completely 100% handicap accessible with ramped areas to allow for wheelchair traffic in the play structure. An accessible side walk from the parking lot to the playground has been installed as well as play features that can be used by all abilities.



The Fon du Lac Park District, in partnership with Forever Friends Fundraising, built this playground in three phases. Phase I was installed in 2014, followed by Phase II in 2015 and finished up with Phase III in 2016.



FON DU LAC PARK DISTRICT RECEIVED AN OSLAD GRANT

Fon du Lac Park District has been selected to receive a \$600,000.00 Open Space Land Acquisition and Development (OSLAD) grant from the State of Illinois. This grant money will be used for Park improvements and revitalization of Neumann Park in East Peoria.

Neumann Park is the home of our All-Inclusive Playground that was installed from 2014 to 2016 with the partnership of Forever Friends Fundraising. This playground is completely 100% handicap accessible with ramped areas to allow for wheelchair traffic in the play structure. An accessible sidewalk from the parking lot to the playground has been installed as well as play features that can be used by all abilities. With the \$600,000 Open Space Land Acquisition and Development Grant received, the Park District plans to **remove and replace aging infrastructure, install two new pavilions, create an accessible restroom facility, construct a splash pad, and add additional sidewalks, parking, lighting and shade structures.** Our hope is that this project will be completed in Spring of 2026. We are excited to see these improvements happen as well as the impact they will have on our facilities and patrons.



Conceptualization of the Splash Pad to be installed. Final design may vary.

**SEE ALL OF OUR PLAYGROUNDS
NEXT** 



Neumann Shelter #2
305 Neumann Drive



West Park
400 Block of Springfield Road



Middle Park
403 Springfield Road



Middle Park
403 Springfield Road



Grieves Park
407 Springfield Road



Veterans Park
409 Springfield Road



Auer Park
433 Veterans Drive



Bradley A. Smith Park
400 Block of Springfield Road



Spinder Park
506 Cass Street



George Doering Park
300 Carlson Avenue



LaHood Park
110 Sunnybrook Drive



Harmony Park
330 Harmony Avenue



Cooper Park North
2929 N. Main Street



Cooper Park South
2601 N. Main Street



Windsong Estates Park
205 Savannah Lane



Jaycee Park
321 Cole Street



Administration Building
201 Veterans Drive



Administration Building
201 Veterans Drive

