

**LANCASHIRE  
BUSINESS  
EXP  2024**

**EXHIBITOR GUIDE**

**JOIN THE CONVERSATION #LBE2024**

#LBE2024

# Partners



GEO-ENVIRONMENTAL CONSULTING



BID WRITING SERVICE

**boost**

Lancashire's Business Growth Hub



City & Guilds

DELTA  
HOTELS  
MARRIOTT  
PRESTON



Lancashire and South Cumbria

Careers  
in health and social care

**LANCASHIRE  
BUSINESSVIEW**



Conferences & Events +

Lancaster University



**National World**

**NESPRESSO**  
PROFESSIONAL



**OPTIMUM**  
SIGNS | INTERIORS | ALFRESCO | PRINT

**rosebud**<sup>™</sup>



THE  
**Flower Bowl**  
ENTERTAINMENT CENTRE



University of  
Central Lancashire  
UCLan

# Welcome to #LBE2024

**LANCASHIRE  
BUSINESS  
EXP 2024**

The team at Shout Expo is delighted to once again host the **Lancashire Business Expo.**

A heartfelt thank you from everyone at Shout Expo for joining us today for Lancashire's largest annual business exhibition, **Lancashire Business Expo.** Our thanks also to the University of Central Lancashire for being our hosts today and providing such fantastic facilities.

This is Shout Expo's flagship B2B exhibition; we hosted our first LBE in 2015. In today's exhibition hall you will find around 120 businesses ready to welcome you. Browse the list of exhibitors in this brochure to plan your day and make time to visit all the stands that interest you.

You will meet exhibitors from a variety of industries, predominantly representing private businesses, public sector organisations, charities and education providers. Many exhibitors are running competitions with amazing prizes to be won. There are also plenty of goodies to pick up along the way, so don't leave empty handed!

**Today's expo hashtag is #LBE2024.** Use it online throughout the day and after the event to connect with exhibitors, delegates and the wider business community. Join the conversation on Shout Expo's social media accounts.

We hope you enjoy a successful and memorable day.

With best regards,  
**The Shout Expo Team**



**LIVERPOOL  
CITY REGION  
BUSINESS  
EXP 2024**

**NORTH WEST  
BUSINESS  
EXP 2024**

**CUMBRIA  
BUSINESS  
EXP 2024**

**SHOUT!**  
Exhibitions

**Are you  
ready to connect  
the right way?**

**LIVERPOOL  
CITY REGION  
BUSINESS  
EXP 2024**

**#LCRE2024**  
**14th June**  
Exhibition Centre,  
Liverpool

**CUMBRIA  
BUSINESS  
EXP 2024**

**#CBE2024**  
**20th September**  
Carlisle  
Racecourse

**NORTH WEST  
BUSINESS  
EXP 2024**

**#NWBE2024**  
**18th October**  
Bolton Stadium  
Hotel

**WWW.SHOUTEXPO.COM**  
info@shoutexpo.com • 01772 935931





GEO-ENVIRONMENTAL CONSULTING



BEK Enviro

# Introducing BEK: a multi award winning geo-environmental consultancy.

We are an elite team of specialist consultants, whose only desire is to **provide cost effective, innovative solutions for a wide range of issues** that arise on development sites.

BEK has built an excellent reputation across both public and private sectors across the UK.



Join us on our journey to redefine the future of geo-environmental consulting with unparalleled enthusiasm, vision and excellence.

## Our services:

- ✓ Contaminated Land
- ✓ Site Investigation
- ✓ Geotechnical Assessments
- ✓ Drainage Design
- ✓ Ecological Appraisals (including BNG calculations)
- ✓ Flood Risk Assessments
- ✓ Mining Risk Assessments
- ✓ Ground Gas Risks
- ✓ Remediation Strategies & Validation Work
- ✓ Mineral Assessments
- ✓ + Others



Contact us for cost-effective environmental solutions delivered with outstanding service.



Scan the QR code  
and **find more about our services** on our website





# #LBE2024 Exhibitors

More exhibitors on [page 8](#).



**AHEX Group**

[www.ahexgroup.com](http://www.ahexgroup.com)

AHEX Group is dedicated to upskilling organizations through various services, including training, consultancy, and analysis.



**AmpEV**

[www.ampev.co.uk](http://www.ampev.co.uk)

AmpEV specialise in the design, supply, installation and maintenance of electric vehicle charge points throughout the UK.



**Apogee Corporation**

[www.apogeecorp.com](http://www.apogeecorp.com)

We help organisations work smarter & work safer by creating a workplace for your employees to work COLLABORATIVELY.



**Baltic Apprenticeships**

[www.balticapprenticeships.com](http://www.balticapprenticeships.com)

We offer IT, software development, data analysis and digital marketing apprenticeship programmes!

**PARTNER**



GEO-ENVIRONMENTAL CONSULTING

**BEK Enviro**

[www.bekenviro.co.uk](http://www.bekenviro.co.uk)

We offer expert advice for a broad range of environmental services by following UK guidance frameworks in each respective field.



**BGreenn**

[www.bgreenn.co.uk](http://www.bgreenn.co.uk)

BGreenn is an energy focused company that concentrates on Solar PV Installs & battery storage.

**PARTNER**



**Bid Writing Services**

[www.bidwritingservice.com](http://www.bidwritingservice.com)

At BWS Bid Writing Service we understand how to win bids.



**Birkdale Insurance Group**

[www.birkdaleinsurancegroup.co.uk](http://www.birkdaleinsurancegroup.co.uk)

Commercial Insurance Broker.



**BNI Lancashire**

[www.bnionline.co.uk](http://www.bnionline.co.uk)

BNI offers a proven referral marketing strategy that helps you grow your local business through a network of like-minded people.



**BID WRITING  
SERVICE**



**Bid Writing Services**

# Get Bid Ready with **BWS**



**£2 Billion  
Won for  
our Clients  
in 2023**

## **WHAT WE CAN DO FOR YOU:**

- Improved win rate
- Higher quality submissions
- Improved internal efficiencies
- Less reliance on Senior Management

Contact us today for a no-obligation discussion on how our services can enhance the value of your business

---

[info@bidwritingservice.com](mailto:info@bidwritingservice.com)  
07760 514 645  
[www.bidwritingservice.com](http://www.bidwritingservice.com)



# #LBE2024 Exhibitors

More exhibitors on [page 10](#).

LANCASHIRE  
BUSINESS  
EXP  2024



**Bowker  
BMW & MINI**

[www.bowkermotorgroup.co.uk](http://www.bowkermotorgroup.co.uk)

Bowker BMW & MINI have Centres in Preston & Blackburn, dedicated to providing the highest levels of customer service.



**Bridging  
Finance Solutions**

[www.bridgingfinance-solutions.co.uk](http://www.bridgingfinance-solutions.co.uk)

BFS are a privately funded provider of short term property finance, we can assist with bridging and development finance.



**Britannia  
IT Services**

[www.britanniait.uk](http://www.britanniait.uk)

Expert IT support, cyber security, cloud solutions, and managed services, for businesses across the North West and UK.

**PARTNER**



**BusinessGiftUK.com**

[www.BusinessGiftUK.com](http://www.BusinessGiftUK.com)

Leyland based, printed promotional gift distributors. UK made, eco-friendly, business gifts.



**Burnley College**

[www.burnley.ac.uk](http://www.burnley.ac.uk)

Building futures, changing lives.



**Burnley FC**

[www.burnleyfootballclub.com](http://www.burnleyfootballclub.com)

Burnley Football Club Hospitality offers guests an unforgettable matchday experience at Turf Moor.



**Business Connect  
Magazine**

[www.businessconnectmagazine.co.uk](http://www.businessconnectmagazine.co.uk)

Business connect magazine creates awareness and opportunity for businesses across the uk & beyond!



**Business Lodge**

[www.businesslodge.co.uk](http://www.businesslodge.co.uk)

We are a contemporary flex-space provider, offering innovative office solutions to business communities in Bury and Stoke-on-Trent.



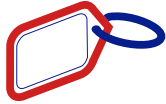
**Chess ICT**

[www.chessict.co.uk](http://www.chessict.co.uk)

We help you connect your people, protect your data, grow your business and reduce your costs.



Talk to our experienced team today about making your business memorable...



**BlankKeyrings**  
**.co.uk**



**Brite-MatMouseMat**  
**.co.uk**



**BusinessGiftUK**  
**.com**

**PrintedPencil.co.uk**



**LoopKeyrings.co.uk**



...or call us to make an appointment for coffee and a chat at the fabulous Worden Hall



F04 Worden Hall, Worden Lane, Leyland PR25 1DJ Call 01772 429111





# #LBE2024 Exhibitors

More exhibitors on [page 12](#).



**PARTNER**



**Chorley Council**

[www.choosechorley.co.uk](http://www.choosechorley.co.uk)

Choose Chorley for Business  
Committed to supporting businesses  
Start-up, Recovery, Growth,  
Relocation.



**City & Guilds Gen2**

[www.gen2.ac.uk](http://www.gen2.ac.uk)

Training provider and education  
centres that provide work-based  
learning programmes.



**Cloud4 Technology**

[www.cloud4computers.co.uk](http://www.cloud4computers.co.uk)

Securing your business: Cloud & IT,  
Cyber protection 24/7, Cyber security  
& Data backup.



**Club Bolton  
at BWFC**

[www.bwfc.co.uk](http://www.bwfc.co.uk)

A state of the art conference and  
exhibition venue with a difference,  
located within the Toughsheet  
Community Stadium.



**Colne BID**

[www.cometocolne.co.uk](http://www.cometocolne.co.uk)

Colne Business Improvement District  
(BID) is a business-led and  
business-funded body.



**CONCEPT**  
EST.1992

**Concept Incentives**

[www.concept-incentives.co.uk](http://www.concept-incentives.co.uk)

Branded promotional merchandise  
specialists since 1992.



**Convene IT**

[www.conveneit.co.uk](http://www.conveneit.co.uk)

Convene IT are your outsourced "IT  
Department", we deliver industry  
leading IT Support for our customers.



**Copy Print Services**

[www.copyprintservices.co.uk](http://www.copyprintservices.co.uk)

Copy Print Services are a team of  
experts who specialise in providing  
managed print solutions to  
organisations.



**Cotton Court  
Services**

[www.cottoncourt.co.uk](http://www.cottoncourt.co.uk)

We provide businesses and individuals  
with flexible office space and business  
services.



Funded By



Training



# Believe You Can

Helping People, Organisations and Economies Develop Their Skills for Growth

## Taster Sessions & Open Evenings

Want to find out more about apprenticeships? Reserve your place on our FREE Apprenticeship Taster Sessions and open a gateway to an incredible future.



## Step In2 Apprenticeships

The fully funded Step In2 Apprenticeship programmes are the perfect first step for you to gain the knowledge and skills employers are looking for and get you ready for an apprenticeship.



## Apprenticeships & Degree Apprenticeships

Gen2 offer a wide range of Apprenticeships from L2 to L6 Degree Apprenticeships covering key business sectors including Business Services, Teaching Assistant, Nuclear, Engineering & Civil Engineering



## BEng Honours Degree

HND  
HNC

Higher Education

L6  
L5

Degree Apprenticeships

L4  
L3  
L2

Apprenticeships

Step In2 Apprenticeships

Taster Sessions

## Apply Today for Gen2 Apprenticeships

Scan the QR code below and apply now to our 2024 Apprenticeship Vacancies.

More information and the whole offering is available on our site.



## Funded Training - Skills Bootcamps

Skills Bootcamps are funded, flexible courses of up to 16 weeks for adults aged 19 or over. They give people the opportunity to build up valuable sector-specific skills.



## Upskill Your Workforce

Are you an employer looking to upskill your workforce? From high quality short courses to funded training throughout Cumbria, we have the ability to meet our customers needs.



## Employer FAQ

### Can I use apprenticeships to upskill my workforce?

You can use apprenticeship training to fill key skill gaps in your business and boost employee motivation by investing in their development.

### How do I recruit an apprentice?

Gen2 offers a comprehensive recruitment service which can include the sourcing of applicants, aptitude testing, support with interviews and selection. Our business development team will work closely with you to understand your business needs and

suggest the most appropriate apprenticeship for your business.

### How much does an apprentice earn?

As of April 2024, apprentices must earn at least the national apprenticeship wage, which will be £6.40 per hour.

### Can I claim Skills Bootcamp Funding?

If you are an employer or self employed looking to upskill your workforce, we have funding opportunities available.

### Gen2 Home Page







# #LBE2024 Exhibitors

More exhibitors on [page 14](#).

## LANCASHIRE BUSINESS EXP 2024



**Crow Wood**  
HOTEL & SPA RESORT

**Crow Wood Hotel & Spa Resort**

[www.crowwoodhotel.com](http://www.crowwoodhotel.com)

Our hotel is perfectly located in Burnley, easily accessible for your next business function and all your corporate travel needs.



**CRYSTAL**  
FUNERAL PLANNING

**Crystal Funeral Planning**

[www.crystalfuneralplanning.co.uk](http://www.crystalfuneralplanning.co.uk)

Funeral Planning Company your family can trust.

**PARTNER**



**Delta Hotels by Marriott Preston**

[www.marriott.com](http://www.marriott.com)

Delta Hotels by Marriott Preston provides the perfect base for both business and leisure travellers.



**DELTA PLUS**

**Delta Plus UK**

[www.deltaplus.co.uk](http://www.deltaplus.co.uk)

We manufacture personal protection solutions. Products are designed around protection, comfort and design.



**digitav**

**Digitav**

[www.digitav.com](http://www.digitav.com)

Automating business services and systems in the cloud, saving time and increasing capacity.




**DocuWare**

**DocuWare**

[www.docuware.com](http://www.docuware.com)

DocuWare revolutionises SMEs by providing document management and workflow automation solutions.



**e-Aspire**

**e-Aspire**

[www.e-aspire.com](http://www.e-aspire.com)

eLearning | Training Videos  
| Animation | Gamification | AI Quizzes  
| Infographics and more



**East Lancashire Chamber of Commerce**  
Making Your Business Successful

**East Lancashire Chamber of Commerce**

[www.chamberelancs.co.uk](http://www.chamberelancs.co.uk)

A locally based private sector organisation, owned by the Members and accredited by the British Chambers of Commerce.



**EAT MY LOGO**

**Eat My Logo**

[www.eatmylogo.co.uk](http://www.eatmylogo.co.uk)

Supplier of branded cakes, biscuits & sweets to help you treat, reward & celebrate customers & staff.



# Simple Made Perfect



## At Delta Hotels by Marriott Preston

Originally a Victorian manor house, Delta Hotels by Marriott Preston provides the perfect base for both business and leisure travellers. Here you'll find spacious hotel rooms filled with amenities, with many of our rooms offering views of our landscaped grounds.

Enjoy dinner in Cast Iron Grill and cocktails in The Brew Bar Lounge. Take the plunge in the indoor pool and work out in the hotel gym.

Our picturesque countryside location with great motorway links makes us ideal for all types of events. No matter what brings you here, expect a warm welcome at Delta Hotels by Marriott Preston.

Make your stay even more rewarding by signing up to Marriott Bonvoy. Enjoy free Wi-Fi, get exclusive Member Rates, earn points for free nights and more. Scan the QR code to join today.

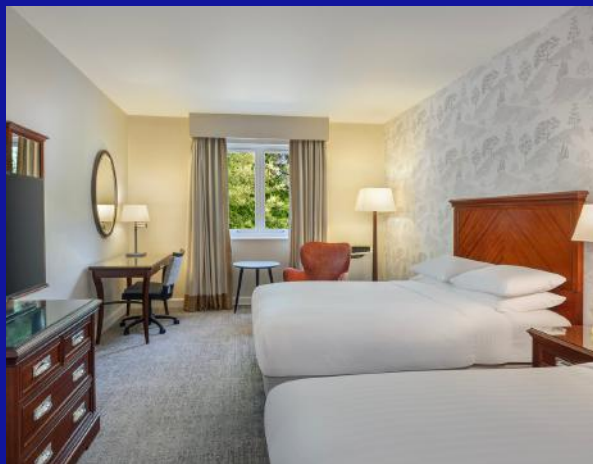
 DeltaHotelsPreston  
 DeltaHotelsMarriottPreston

Garstang Road, Broughton, Preston, England, United Kingdom, PR3 5JB

01772 864087  
preston.events@deltahotels.com



MARRIOTT BONVOY  
EVENTS™





# #LBE2024 Exhibitors

More exhibitors on [page 16](#).

LANCASHIRE  
BUSINESS  
EXP  2024



Ecolab

[www.ecolab.com](http://www.ecolab.com)

You need a partner with the proven science-based expertise to help you protect your brand and maintain a safe, pest-free environment.



Faremaxpro Ltd

Faremaxpro

[www.faremaxpro.com](http://www.faremaxpro.com)

We are a commercial consulting company that specialise in business coaching to help your company scale and grow the business.



Farleys Solicitors LLP

[www.farleys.com](http://www.farleys.com)

Lancashire law firm offering legal expertise with a down to earth approach for you, your family, and your business.



FCMS

[www.fcms-nw.co.uk](http://www.fcms-nw.co.uk)

FCMS provide in house services for companies wanting to offer employee screening and diagnostic services.



First Digital Media

[www.firstdigitalmedia.co.uk](http://www.firstdigitalmedia.co.uk)

Digital Marketing Agency - Specialising in Web Design, SEO, Google Ads, Meta Ads and Lead Generation.



FM Outsource

[www.fmoutsource.com](http://www.fmoutsource.com)

We provide 24/7 call and message answering for businesses all over the UK.



FWP

[www.fwpgroup.co.uk](http://www.fwpgroup.co.uk)

Founded in 1960, FWP provides multi-disciplinary building design throughout the UK.



Fylde Damp Proofing

[www.fyldedampproofing.co.uk](http://www.fyldedampproofing.co.uk)

We provide all aspects of remedial and structural waterproofing services across Lancashire. We are CSTDB qualified.



Gainsborough  
Flooring

[www.gainsboroughflooring.co.uk](http://www.gainsboroughflooring.co.uk)

Lancashire's Leading commercial, industrial & domestic flooring provider.





**EAT MY LOGO**

**TREAT REWARD CELEBRATE**

**BRANDED EDIBLE TREATS FOR BUSINESSES**



**Helping you make an *impact* with:**

- Staff Engagement
- Events
- Celebrations
- Awareness Days
- Launches
- Giveaways
- Marketing
- + Much More

**Trusted by brands across the UK:**



[www.eatmylogo.co.uk](http://www.eatmylogo.co.uk) | [emlsales@eatmylogo.co.uk](mailto:emlsales@eatmylogo.co.uk) | 01772 472580



# #LBE2024 Exhibitors

More exhibitors on [page 20](#).



**PARTNER**



Lancashire's Business Growth Hub

Growth Lancashire

[www.boostbusinesslancashire.co.uk](http://www.boostbusinesslancashire.co.uk)

Funded business support for Lancashire businesses looking to grow, scale and start.



Hampton by Hilton Blackpool

[www.hilton.com](http://www.hilton.com)

We are a 204 Bedroom Hotel based in South Shore Blackpool offering beachfront accommodations 328 feet from Blackpool Promenade Beach.



HIGH COURT ENFORCEMENT GROUP®

High Court Enforcement Group

[www.hcegroup.co.uk](http://www.hcegroup.co.uk)

Recover money, property and land with our fast, effective and nationwide High Court enforcement team.



Howden Insurance

[www.howdeninsurance.co.uk](http://www.howdeninsurance.co.uk)

As your local insurance broker in Preston we can help you with all your insurance needs.



HSBC UK

HSBC

[www.hsbc.co.uk](http://www.hsbc.co.uk)

HSBC is one of the world's largest banking and financial services organisations.



iso specialists™

IMSM

[www.imsm.com](http://www.imsm.com)

IMSM Limited support organisations in gaining ISO certification and business opportunities.



Inspire Youth Zone & Preston Youth Zone

[www.inspireyouthzone.org](http://www.inspireyouthzone.org)

Inspire - a charity who empowers youth, fosters growth and provides support in a vibrant, safe space.



Internet Central

[www.ic.uk](http://www.ic.uk)

Our mission is to serve your businesses by delivering you the best and most reliable, dedicated Gigabit business internet connectivity available.



James' Places (North West)

[www.jamesplaces.co.uk](http://www.jamesplaces.co.uk)

Corporate hospitality, weddings, events, hotels and restaurants.



Supporting world class treatment, research and outstanding care

Reg. Charity No. 1051194



Lancashire Teaching Hospitals  
NHS Foundation Trust



# Support your local Hospital Charity by becoming a corporate supporter

There are lots of ways for your business to get involved:

- select us as your charity of the year
- participate in our fundraising events
- provide support or sponsorship for charity campaigns and events

## Together we can make a difference!



For full details on our events, more information on what we do and to find out how we can support your fundraising, please visit [www.lthcharity.org.uk](http://www.lthcharity.org.uk), email [charity@lthtr.nhs.uk](mailto:charity@lthtr.nhs.uk) or call our charity team on...

# 01772 528500

Keep in touch by following us on social media:

@LancHospCharity



Registered with  
FUNDRAISING  
REGULATOR





# THE Flower Bowl

ENTERTAINMENT CENTRE

Home to England's only dedicated curling rink!



Great for team building!

Experience an event to remember!



Luxury cinema screens and meeting rooms available for private hire.



Get the party started with a private bar, bowling and karaoke in the Copper Lounge!



Refuel with a group meal or buffet in The Ocean Fish & Chip Restaurant.

Unlimited fun awaits, check out our selection of activities...  
BOWLING | CRAZY GOLF | CRAZY POOL  
GOLF SIMULATOR | SHUFFLEBOARD

Scan me to view our party and business packages:



📍 Garstang Road, Brock, Preston, PR3 0BT

🖱️ [www.theflowerbowl.uk](http://www.theflowerbowl.uk) ✉️ [FBEvents@theflowerbowl.uk](mailto:FBEvents@theflowerbowl.uk) ☎️ 01995 676210





Health Innovation  
Campus

Lancaster University

Conferences  
& Events +

Lancaster University



**JOIN US AT  
LANCASTER  
UNIVERSITY**



**Lancaster University works with businesses and partner organisations to provide the space and support required to make their project a success.**

## WHAT WE OFFER

- Event and conference space
- Business support
- Partnership opportunities
- Peer community
- Student talent
- Workspace
- Coporate Away Days
- Wellbeing Residentials

## CONTACT US TODAY

- ✉ [hic@lancaster.ac.uk](mailto:hic@lancaster.ac.uk)
- ✉ [lancasterconferences@lancaster.ac.uk](mailto:lancasterconferences@lancaster.ac.uk)
- 🌐 [lancaster.ac.uk/healthinnovation](http://lancaster.ac.uk/healthinnovation)
- 🌐 [lancaster.ac.uk/conferences](http://lancaster.ac.uk/conferences)



# #LBE2024 Exhibitors

More exhibitors on [page 22](#).



**Jean Juviniere**

[www.jeanjuviniere.com](http://www.jeanjuviniere.com)

We are wine specialists and wine importers featuring a great selection of high quality Wines, Champagnes and Premium Spirits.



**JM Glendinning  
Insurance Brokers**

[www.jmginsurance.co.uk](http://www.jmginsurance.co.uk)

Our experienced team takes real pride in supporting clients in the North West and beyond with all their business insurance requirements.



**Kenny Waste  
Management**

[www.kennywastemanagement.co.uk](http://www.kennywastemanagement.co.uk)

Choose Kenny Waste Management for all your waste solutions. Eco-friendly and reliable since 1985.



**Key Engineering and  
Hygiene Supplies**

[www.key-supplies.co.uk](http://www.key-supplies.co.uk)

Your go-to company for top-notch cleaning products/supplies, Workwear and PPE solutions.



**Kingsley  
Asset Finance**

[www.kingsleyassetfinance.co.uk](http://www.kingsleyassetfinance.co.uk)

Providing SMEs in Lancashire with Asset Finance for 30 years with Hire Purchase, Lease & Refinance.

**PARTNER**



**Lancashire & South  
Cumbria NHS Health &  
Care Careers Team**

[www.nhs-careersnw.co.uk](http://www.nhs-careersnw.co.uk)

Offering a myriad of opportunities to those seeking a career within the Health & Social Care sector.



**Lancashire Skills &  
Employment Hub**

[www.lancskillshub.co.uk](http://www.lancskillshub.co.uk)

Supporting the growth of the Lancashire economy by developing people's skills.



**Lancashire Fire and  
Rescue Service**

[www.lancfirerescue.org.uk](http://www.lancfirerescue.org.uk)

We engage with businesses to ensure they are keeping people safe from fire and to prevent fires from occurring.



**Lancashire Leaflet  
Distribution**

[www.lancashireleafletdistribution.co.uk](http://www.lancashireleafletdistribution.co.uk)

Your leaflets distributed quickly, efficiently & reliably throughout all areas of Lancashire & the North West.



# LANCASHIRE BUSINESSVIEW

THE HOME OF



LANCASHIRE BUSINESSVIEW  
RED ROSE  
AWARDS 2024



Lancashire  
Business Day



The Lancashire  
Festival of Business



Lancashire  
Health and Wellbeing  
Conference 2024



Lancashire  
Net Zero Carbon  
Conference



Lancashire Built  
Environment  
Conference

## Sub36



01254 297870

events@lancashirebusinessview.co.uk

www.lancashirebusinessview.co.uk



Upcoming  
Events



# #LBE2024 Exhibitors

More exhibitors on [page 24](#).



PARTNER



**Lancashire Teaching Hospitals Charity**

[www.lthcharity.org.uk](http://www.lthcharity.org.uk)

Lancashire Teaching Hospitals Charity supports the work of Royal Preston and Chorley and South Ribble Hospitals.

PARTNER



**Lancaster University**

[www.lancaster.ac.uk](http://www.lancaster.ac.uk)

Lancaster University works with businesses and partner organisations to provide the space and support required to make their project a success.

PARTNER



**Lancashire Business View**

[www.lancashirebusinessview.co.uk](http://www.lancashirebusinessview.co.uk)

Lancashire Business View provides a platform to share success, online, in print and in person.

**Lee Distribution Ltd**  
Design | Print | Delivery

**Lee Distribution**

[www.leedistribution.com](http://www.leedistribution.com)

The best value local advertising booklet! Covering 270,000 homes across Central Lancashire Adverts from £15.

**LOCALiQ**  
PART OF NEWSQUEST MEDIA GROUP

**LOCALiQ**

[www.localiq.co.uk](http://www.localiq.co.uk)

LOCALiQ is an award-winning multi-channel digital marketing agency; specialising in local marketing and helping your business grow.

**LOVE.  
TO BRAND**  
PROMOTIONAL MERCHANDISE

**Love to Brand**

[www.love.tobrand.co.uk](http://www.love.tobrand.co.uk)

Specialist suppliers of promotional merchandise and corporate branded gifts.



**MacroTek Distribution**

[www.macrotek.co.uk](http://www.macrotek.co.uk)

UK based importer and supplier of polycarbonate and acrylic sheet.



**Merchandise 4 Impact**

[www.merchandise4impact.com](http://www.merchandise4impact.com)

Discover our dynamic promotional merchandise and branded clothing solutions, tailored to resolve all your merchandising challenges.

**MERCURE  
HOTELS**

**Mercure  
Dunkenhalgh Hotel**

[www.all.accor.com](http://www.all.accor.com)

The Mercure Blackburn Dunkenhalgh Hotel & Spa is set inside a beautiful 700-year-old country manor house.





# CONKER DIGITAL MARKETING

[mnadigital.co.uk](http://mnadigital.co.uk)



## SPECIALISTS IN:

WEBSITES . SEO . PPC  
SOCIAL MEDIA . CREATIVE SERVICES



4.8 stars | 123 reviews



Brought to you by

**National World**





# #LBE2024 Exhibitors

More exhibitors on [page 26](#).



**MORGAN  
SINDALL**  
CONSTRUCTION

Morgan Sindall  
Construction

[www.morgansindallconstruction.com](http://www.morgansindallconstruction.com)

Morgan Sindall Construction is a UK business with a network of local offices.

**MOSS**  
CREATIVE

Moss Creative

[www.mosscreative.co.uk](http://www.mosscreative.co.uk)

MOSS Creative is an award winning Video, Animation and Photography service, offering bespoke visual solutions to enhance your digital marketing.

**MYTTON FOLD**  
HOTEL

Mytton  
Fold Hotel

[www.myttonfold.co.uk](http://www.myttonfold.co.uk)

Set in the heart of the Ribble Valley, Mytton Fold is the areas premium setting where business meets comfort.

**PARTNER**

**National World**

National World

[www.lep.co.uk](http://www.lep.co.uk)

National World are a publishing business with over 100 digital and print newsbrands across the uk.



NatWest

[www.NatWest.com](http://www.NatWest.com)

NatWest Enterprise Team providing business support, UKs no 1 Accelerator Programme, access to leading industry Experts.

**PARTNER**

**NESPRESSO**  
PROFESSIONAL

Nespresso  
Professional

[www.nespressoforbusiness.co.uk](http://www.nespressoforbusiness.co.uk)

Nespresso Professional offers high quality Professional machine, service and taste, inclusive of a free on loan machine offering.

**ND** NetDec  
Intelligent IT Solutions

NetDec

[www.netdec.com](http://www.netdec.com)

NetDec can help you choose the software that matches your working practices, or even revolutionises them.

**NORTH END  
EVENTS**

North End Events

[www.prestigevenuesandevents.sodexo.com](http://www.prestigevenuesandevents.sodexo.com)

We create memorable event experiences for you and your guests at stadia across the North West.

**Oodles**  
Tech Rentals Made Easy.

Oodles  
Finance

[www.oodles.com](http://www.oodles.com)

The UK's best rated and fastest growing device rentals service. Tailored to each business.



**NESPRESSO** | EXCLUSIVE DISTRIBUTOR  
PROFESSIONAL

# NESPRESSO MOMENTO MAKE IT SIMPLE

Nespresso Professional is the pioneer and reference for delivering the highest-quality portioned coffee. With a range of 18 coffees and a variety of professional machines, we offer bespoke and tailored solutions for businesses and venues of any size.



To book your complimentary coffee morning, scan the QR code







# #LBE2024 Exhibitors

LANCASHIRE  
BUSINESS  
EXP  2024

More exhibitors on [page 28](#).

PARTNER



Open House  
Pictures

[www.openhousepictures.co.uk](http://www.openhousepictures.co.uk)

We're a creative, cinematic team who bring award winning expertise of film and video production into the world of business focused results.



Optimum  
Signs

[www.optimumsigns.co.uk](http://www.optimumsigns.co.uk)

Optimum Signs design, manufacture and install premium quality signage that showcases your brand.



Palmer Publicity  
Services

[www.palmerpublicity.co.uk](http://www.palmerpublicity.co.uk)

PPS provide a full design, print and installation service for all forms of signage, exhibition displays and custom wall art.

PORSCHE

Porsche Centre  
Preston

Porsche Centre  
Preston

[www.porschepreston.co.uk](http://www.porschepreston.co.uk)

Porsche Centre Preston, part of Bowker Motor Group, pride themselves in representing the brand across Lancashire.



Preston Caribbean  
Carnival

[www.prestoncarnival.co.uk](http://www.prestoncarnival.co.uk)

We promote the appreciation and understanding of Caribbean culture by and for, diverse communities of Preston.

invest  
PRESTON

Preston City  
Council

[www.investprestoncity.com](http://www.investprestoncity.com)

the City of Preston is at the heart of the county's economic development as a strategic investment hub, driving commercial opportunities in Lancashire.



Preston  
City Games

[www.prestoncitygames.com](http://www.prestoncitygames.com)

We look forward to welcoming the businesses, charities and social enterprises of Preston to the Preston City Games 2024.



River Capital

[www.rivercapitaluk.com](http://www.rivercapitaluk.com)

River Capital is an alternative funder helping SME businesses to accelerate growth.

RKMS  
GROUP

RKMS Group

[www.rkmsuk.co.uk](http://www.rkmsuk.co.uk)

We are a one-stop-shop for compliance.



Start your journey  
to transform your spaces.



Optimum excels in crafting premium spaces across diverse sectors. From bespoke design to precise installation, we elevate businesses and showcase brands across commercial, residential, leisure, and alfresco environments.

Choose Optimum for **excellence in visibility** and **brand distinction**.

01772 652 099  
sales@optimumsigns.co.uk

[optimumsigns.co.uk](http://optimumsigns.co.uk)





# #LBE2024 Exhibitors

More exhibitors on [page 30](#).

LANCASHIRE  
BUSINESS  
EXP  2024

PARTNER



Rosebud

[www.rosebudfinance.co.uk](http://www.rosebudfinance.co.uk)

Rosebud is a Lancashire business loans provider and a proven alternative lender to traditional finance providers.



Runshaw College

[www.runshaw.ac.uk](http://www.runshaw.ac.uk)

Our students at Runshaw College always perform outstandingly well in their advanced level qualifications.



Securitas

Securitas Security Services (UK)

[www.securitas.uk.com](http://www.securitas.uk.com)

Leading the transformation of the security industry by putting our clients at the heart of our business.



Seriun

[www.seriun.co.uk](http://www.seriun.co.uk)

Managed Service Provider and have been digitally transforming businesses through innovative IT Support, Telecoms and Cyber Security solutions.



Shout Connect

[www.shoutconnect.co.uk](http://www.shoutconnect.co.uk)

The Shout Connect business hub on Preston Docks is a space with co-working desks, meeting rooms, a conference room, and much more.



Skips And Bins

[www.skipsandbins.com](http://www.skipsandbins.com)

SkipsAndBins.com are your online provider of quick and easy waste management solutions.

PARTNER



South Ribble Borough Council

[www.businessinsouthribble.com](http://www.businessinsouthribble.com)

Impartial, information, advice & guidance on business support.



Southport Flower Show / Victoria Park Events

[www.southportflowershow.co.uk](http://www.southportflowershow.co.uk)

Enjoy inspirational show gardens, spectacular floral displays, gardening advice, entertainment and so much more!



Stanley House Hotel & Spa

[www.stanleyhouse.co.uk](http://www.stanleyhouse.co.uk)

Stanley House Hotel & Spa: Boutique Lancashire venue. Premier choice for corporate Meetings & Events.





# Realise your business's potential in 2024 with **rosebud**<sup>TM</sup>



Trusted by 100s of Lancashire businesses just like yours

A proven alternative to high street banks

Loans from **£10,000 to £300,000**



Fast



Fair



Flexible



Local

Apply today!



For new enquiries or applications:  
[rosebud@growthco.uk](mailto:rosebud@growthco.uk)

[www.rosebudfinance.co.uk](http://www.rosebudfinance.co.uk)



# #LBE2024 Exhibitors

More exhibitors on [page 32](#).

## LANCASHIRE BUSINESS EXP 2024



**Stone Create**

---

[www.stonecreate.com](http://www.stonecreate.com)

Stone Create are a full service creative agency.



**Tesla**

---

[www.tesla.com](http://www.tesla.com)

Tesla is accelerating the world's transition to sustainable energy with electric cars, solar and integrated renewable energy solutions.

**PARTNER**



**The Flower Bowl Entertainment Centre**

---

[www.theflowerbowl.uk](http://www.theflowerbowl.uk)

Lancashire's most exciting and unique leisure venue, offering a range of fun-packed activities under one grass-covered roof!



**The Fun Experts**

---

[www.thefunexperts.co.uk](http://www.thefunexperts.co.uk)

Fun Entertainment Suppliers.



**The IT Dept**

---

[www.theitdept.co.uk](http://www.theitdept.co.uk)

The IT Dept is an MSP offering IT solutions and support for businesses, schools and charities in Lancashire and beyond!




**Thomas Graham & Sons**

---

[www.thomas-graham.co.uk](http://www.thomas-graham.co.uk)

At Thomas Graham, we offer a wide variety of industrial supplies as well as steel, welding, PPE and hygiene.



**Tide Platform**

---

[www.tide.co](http://www.tide.co)

Tide is a business banking platform is design for MSME, self employed and freelancer.



**UK Healthcare**

---

[www.ukhealthcare.org.uk](http://www.ukhealthcare.org.uk)

Healthcare Cash Plan & Wellbeing Services Provider.

**PARTNER**



**University of Central Lancashire**

---

[www.uclan.ac.uk](http://www.uclan.ac.uk)

The University of Central Lancashire boasts a range of business support and access to state-of-the-art facilities.



**South  
Ribble**  
Borough Council

IT'S **TIME** TO DO  
**BUSINESS**  
IN SOUTH RIBBLE

to connect, to recruit, to access support and to grow your business.

We offer a range of fully funded business support including:

- Innovation
- International Trade
- Business Growth
- Recruitment & Training
- Carbon Reduction
- Business Energy Efficiency Scheme
- Social Value

Come and chat to us at our stand today or feel free to contact us on:

**[info@businessinsouthribble.com](mailto:info@businessinsouthribble.com)**

**[www.businessinsouthribble.com](http://www.businessinsouthribble.com)**

**SOUTH RIBBLE**



**South Ribble Borough Council**



# #LBE2024 Exhibitors

LANCASHIRE  
BUSINESS  
EXP  2024



## Virtual Tour 3D by Site Surveying Services

[www.virtualtour3d.co.uk](http://www.virtualtour3d.co.uk)

Immersive experience which transports your clients to your business, creating a seamless and captivating experience.



## Watson Ramsbottom Solicitors

[www.watsonramsbottom.com](http://www.watsonramsbottom.com)

Growing regional law firm with offices across Lancashire offering a full range of personal & commercial legal services.



## Westcoast Workwear

[www.westcoastworkwear.co.uk](http://www.westcoastworkwear.co.uk)

We are proud to be a UK-based company with over 25 Years of Experience in Bespoke Embroidery and Garment Printing.



## WHN Solicitors

[www.whnsolicitors.co.uk](http://www.whnsolicitors.co.uk)

WHN Solicitors is a nationally recognised, award winning law firm with 9 offices across Lancashire and Greater Manchester.



## Wilson and Roe High Court Enforcement

[www.wilsonandroe.com](http://www.wilsonandroe.com)

Specialists in the enforcement of High Court Writs of Control, Writs of Possession and other debt recovery matters.



## WRKSPACE

[www.wrkspace.co.uk](http://www.wrkspace.co.uk)

Wrkspace provides flexible offices, meeting rooms and co-working solutions from 4 business centres based in Preston and 2 in Bolton.





# Support for business

Our strong reputation for applied business research and consultancy, entrepreneurship, innovation, training and Degree Apprenticeships can help you access funding and business support to grow your company.

## Contact us today

01772 895500

business@uclan.ac.uk

uclan.ac.uk/business

@UCLanBusiness



University of  
Central Lancashire  
UCLan

## Connecting talent to industry

The University of Central Lancashire can help you employ the best future talent through our free Apprentice Matching Service (AMS). If you're looking to take on a Degree Apprentice the service gives you the opportunity to pre-interview candidates, allowing the alignment of corporate values with the ideal candidate profile. This also provides invaluable employability advice, skills and tailored training for the working environment.

"Our AMS is committed to identifying the ideal match for your company. With over 1,000 applications received since the start of 2023, a wealth of opportunity awaits you in discovering the perfect candidate."

Martin Blunt, head of the Enterprise Engagement Unit

## What's the benefit to you?

- Helping you to employ the best future talent
- Free specialist service saving you time and money
- Expert support and guidance
- Future-proofing your business with up-to date tailored knowledge
- Support to boost your employees' performance through industry expertise
- Helping your organisation to be at the forefront of the Fourth Industrial Revolution

"The new Apprenticeship Matching Service for apprentices and employers is a valuable resource that helps businesses find the perfect fit."

Richard Singleton, Managing Director, whY-us? Marketing



Lancashire and South Cumbria Health and Care Partnership

Careers in health and social care

You can find out more by visiting [www.nhscareersnw.co.uk](http://www.nhscareersnw.co.uk)



## Discover your career in Health & Care

Our Careers and Engagement Team work across the Lancashire and South Cumbria region to provide a wealth of opportunities for all to be inspired and supported into their dream career working in the NHS and Care.

Our Careers and Engagement team is a network of friendly and knowledgeable professionals who develop events, projects and programmes to support the future workforce. Working with schools, colleges, universities, healthcare partners and other employers, our common aim is to help people of all ages access information and experience through our projects and hub services.

We are continuously developing an engaging range of experiences and opportunities across the Lancashire and South Cumbria region. We want to help you find the career of your choice within the NHS and Care.



Apprenticeships

- Apprenticeship Pathways
- Clinical and Non-clinical
- Features and Benefits



Placements

- Work Experience
- College/T Level Placements
- Internships and Traineeships



Programmes

- Employability Opportunities
- Employability Support
- Resources and Success Stories
- Kickstart opportunities can be found in vacancies



Events

- Apprenticeships
- Interactive Careers Sessions with professionals
- Recruitment

### Did you know we offer Free E-learning?

Aspire E-Learning is our new online learning tool which forms part of our NHS Careers website. It consists of a range of interactive e-Learning courses, free of charge which provide Students with certification upon completion. The courses will include exciting Podcasts and link into various resources and events on our website. Students can explore a variety of subjects including Apprenticeships, Confidence Building, T-Level information, Boosting Employability, Health & Social Care roles, Introduction into Primary Care and more. Suitable for all age ranges, Aspire will support Student Career aspirations and interests by providing interactive ways of gaining knowledge and developing skills required for a career in Healthcare. Students are able to work at their own pace and choose which topics to cover based on their interests and goals.

# LIVERPOOL CITY REGION BUSINESS EXP 2024

**#LCRE2024**

**FRIDAY 14TH JUNE**

Exhibition Centre, Liverpool  
9am till 3pm

Register your interest at  
[www.shoutexpo.com](http://www.shoutexpo.com)





[boostbusinesslancashire.co.uk](http://boostbusinesslancashire.co.uk)

# boost

Lancashire's Business Growth Hub

# Helping Lancashire businesses **thrive**

If you're looking to grow, scale or start a business, use Boost; Lancashire's Business Growth Hub.

Boost is a fully funded service and we have supported 14,000 businesses since 2013.

To find out what's available and how we can help you, contact our Boost team on:

## 0800 488 0057



Funded by UK Government

POWERED BY  
**LEVELLING UP**

Department for Business & Trade

**NORTHERN POWERHOUSE**

Lancashire County Council

In partnership with:

