

Winchelsea Star

Price \$1



Your Weekly Community Newspaper

Since 1977

Vol 45 Ed 49

Tuesday 13 December 2022

winchelseastar.org.au



**Local Legend Melissa Oberin
with granddaughters Delilah and Willow**

Page 7



Food Organics and Garden Organics

Your kerbside FOGO bin takes ALL your food waste, and we really do mean ALL your food waste.

If you peel it, cook it or eat it, it goes in your green-lidded FOGO bin.

HERE ARE THE TRICKY ONES WE OFTEN FORGET:

- ✓ Bones e.g. chicken and turkey carcasses, fish bones
- ✓ Seafood including oyster, prawn, lobster, and crab shells and peelings
- ✓ Citrus peels, pits and stones (even avocado seeds)
- ✓ Dairy products including cheese, yoghurt, butter
- ✓ Eggs and eggshells
- ✓ Meat (raw, cooked and scraps)
- ✓ Mouldy and expired food (remove packaging first)
- ✓ Nuts and seeds
- ✓ Onion and garlic peels
- ✓ Coffee grounds and loose tea leaves

...AND DON'T FORGET ALL YOUR EVERYDAY FOODS LIKE:

- ✓ Baked goods e.g. bread, cakes, pizza
- ✓ Biscuits, chips, chocolate, lollies
- ✓ Fruit and veggie peels and scraps
- ✓ Leftovers and take-away foods
- ✓ Pasta and rice
- ✓ Salads and dressing

...OR THE GREEN WASTE FROM YOUR GARDEN:

- ✓ Cut flowers
- ✓ Weeds (including agapanthus)
- ✓ Prunings
- ✓ Grass/lawn clippings
- ✓ Small branches (less than 10cm diameter)

Your FOGO bin is emptied every week.

Remember to remove plastic or cardboard packaging before you put food waste in your FOGO bin.

Using your FOGO bin is great for our environment, and it frees up space in your red-lidded landfill bin too. The food and garden waste is composted and used to enrich soils on farms, orchards and parks.



For a full list of items accepted in your FOGO bin, scan the QR code or visit surfcoast.vic.gov.au/FOGO

Need more compostable caddy bags?

Pick up a roll of bags from the Winchelsea Transfer Station.

Check operating hours at

surfcoast.vic.gov.au/disposalsites

Using compostable bags is optional – instead you can rinse your caddy, or line it with paper towel.

Confused on bin night?



SCRRApp's got you sorted.



BE A GOOD SORT
FOGO • RECYCLING • GLASS • LANDFILL

Winchelsea Playgroup

Knows how to PARTY!

Our End of Year party was held on 1st December and wow did we PAR-TAY! It was so exclusive you had to RSVP!

The children had the best fun with not just one entertainer, but two entertainers that were dressed in everything rainbow from the bottom of their feet to the tops of their head. The party started off with Frankie The Unicorn Storytime, then it was on to singing songs, beating drums, tinkling xylophones and tapping tambourines; all done with fantastically loud enthusiasm. Then we danced while twirling long brightly coloured ribbons in the air in big circles and fast zig-zag patterns.

But we weren't done partying yet...we made 'squishy canvas art' with our fingers, and didn't spill one drop of paint or even get messy (that's a party secret!), and our children were transformed into roaring tigers, sweet unicorns, bright rainbows, a powerful lightning bolt and Frozen (Elsa) with such amazing face paint.

And, still we weren't finished partying... out came the big rainbow parachute with children laughing and giggling as they laid underneath the moving parachute watching it come so close to touching their noses as is moved up and down, up and down.

The party ended with each child getting to take home their beautiful art masterpiece and their very own copy of Frankie The Unicorn's storybook. I think there were many snoozes that afternoon when everyone got home - maybe from the parents too!

Our last playgroup session for 2022 is Thursday on 15th December, 10am-12pm. We'll mark the day with a lovely morning tea catered by Surfcoast Shire and a visit by Lauren (our lovely and supportive Shire contact). Our theme is STARS - so come dressed in yellow or in anything star related. We'll have star-themed colouring in, star decorations and a star activity. We hope to see you there.

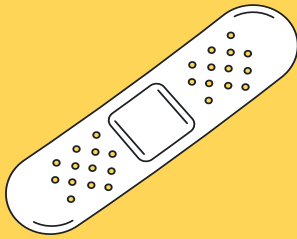
For playgroup news, updates and advice of our 2023 return date, join our "Winchelsea Playgroup 2019" Facebook page or call/text Mel on 0456181268 or look out for us in the Winchelsea Star.





THIS SUMMER, IF WE DON'T GET COVID WE CAN'T SPREAD COVID.

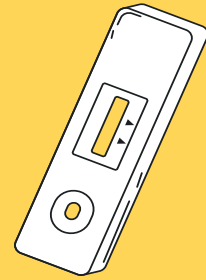
Staying well this summer can be as easy as



staying up to date with your booster vaccine.



talking to your doctor: if you are at risk of becoming unwell, you may be eligible for COVID medicines.



always testing with a RAT if you feel unwell.



staying home if you feel unwell.



catching up outdoors or in places with open doors and windows.



wearing a mask when it's crowded indoors.

coronavirus.vic.gov.au

STAY WELL THIS SUMMER



Hey Hey Kelvin

Last week some Probus members travelled to the Sphinx Hotel in Geelong to see Denise Drysdale in Morning Melodies.

It was our President Kelvin's birthday as it was also Denise's.

So what did she do? She got Kelvin to get up and sing Hey Paula with her, much to Kelvin's discomfort I think.

By the looks of the video, don't give up your day job Kelvin!!!!!!



Summer waste and recycling

There are NO CHANGES to kerbside bin collection days during the festive season.

Put your bin out on the usual night.

Additional bin collections

All households that receive the kerbside bin service will receive one extra landfill and one extra recycling collection in the weeks following Christmas. To see when your extra collection will be:

- Download SCRRApp, the free Surf Coast Rubbish & Recycling App
- Download a calendar PDF at surfcoast.vic.gov.au/calendars
- Enter your address at 'My Neighbourhood' at surfcoast.vic.gov.au/mybin

Extra glass? Extra recycling?

Household amounts of sorted recycling (plastics numbered 1, 2 and 5, metal cans and tins, paper and cardboard), and glass bottles and jars can be dropped off at the Winchelsea Transfer Station for FREE

Winchelsea Transfer Station hours

The transfer station is closed on Christmas Day. Normal operations resume on Monday, 26 December.

Open hours are:

- 2pm-4pm Tuesday and Thursday
- 1:30pm-3:30pm Saturday
- 9:30am-12:30pm Sunday

Fire Danger Days

On days of Extreme or Catastrophic Fire Danger rating, waste services may be impacted. This may include changes to kerbside collections or opening hours at transfer stations and the Anglesea Landfill.

For more information, visit surfcoast.vic.gov.au/servicechanges

Download SCRRApp (the Surf Coast Rubbish & Recycling App) to receive notifications when changes to collections or waste facility operating hours occur.





GREAT Bundle Deal on Bosch Hot Water... FROM ELGAS

Buy any Bosch Bluetooth continuous flow hot water model - 16Litre, 20Litre or 26Litre and **Receive \$100* in Elgas bonus LPG gas credits**

*For more details: www.elgas.com.au/appliances/bosch-cptflow-16-20-26-lpg-bundle-sale

AND... for new customers, an additional \$80 WORTH OF LPG GAS CREDITS when you open a new LPG Gas account with Elgas**

**Further details can be viewed at www.elgas.com.au

Ask about the Elgas Easy Payment Plan - 12 months interest free*** on selected LPG appliances

***Further details can be viewed at: www.elgas.com.au/epp

Automatic tanker gas bottle refill OR gas bottle exchange refill is available for home or business....
Call today or visit our website for our many customer benefits and latest offers

131 161
www.elgas.com.au

ELGAS

STS ACCOUNTING GROUP

Your Taxation & Superannuation Specialists.

Winchelsea
5267 2673
www.surftax.com.au

STORAGE KING

SIMPLE STORAGE SOLUTIONS

- Personal & Business Storage
- Boat, Caravan & Vehicle Storage
- High Security Premises
- Individually Alarmed Units
- Electric Gate Access
- 7 Day Access & CCTV

YOUR STORAGE PROBLEMS SOLVED

5267 3116
6 ALSOP DRIVE, WINCHELSEA 3241

Scott McDonald
0423 413 829

S.J.R AUTOMOTIVE
ABN 842 463 848 33
13 ALSOP DRIVE, WINCHELSEA VIC 3241

- Domestic and Commercial hire equipment
- Industrial welding gas
- Digging and Earthmoving equipment
- New trailers and trailer repairs
- Firewood
- Stockists of Royal Oil Lubricants products
- LPG for domestic and commercial requirements

Give Chris and the Team a call on **5232 1177** or email info@colachire.com.au

www.colachire.com.au
101 Wallace St Colac 3250

COLAC HIRE

M & L DRAYTON
PLUMBING SERVICES

REG No 24356 C/A No C02594

- Domestic and Rural Plumbing
- Roofing
- Sewerage & Septic
- LPG & Natural Gas Connections
- Motorised Drain Cleaning
- Backhoe Hire

Phone Mark 5288 7244
PO BOX 98 WINCHELSEA 3241
Mobile 0428 520 142

Winchelsea Taxis is now Surfcoast Taxis

Our fleet of vehicles are growing to all late models and we are covering an extended area including Winchelsea, Colac, Bannockburn, Inverleigh, Great Ocean Road and Geelong.

We have a fleet of 10 seater Maxi Vans, all with capacity to carry wheelchairs.

Surfcoast Taxis Pty Ltd
All Bookings: 0408 325 992
Fax: 5267 2699
Email: bannotaxis@gmail.com
(Admin or Stan 0429 672 888)
66A Batson Street
Winchelsea 3241

Book your next ride with **smarHAIL**

Book Track Pay Rate

Download on the App Store GET IT ON Google Play

Accounts NDIS provider. TAC, DVA etc

NDIS provider number 4050001044
NDIS provider number 4050001048

Commercial | Industrial | Domestic

HAMILTONS
Truck & Bobcat Hire
Give Aaron a Call
0438 438 623

SOUTHERN GRAIN STORAGE PTY. LTD.

AG SUPPLIES FERTILISER GRAIN STORAGE SEED CLEANING

(03) 5267 2351

Winchelsea local makes a splash at ARIA Awards Red Carpet

Emerging local pop artist Wentworth has had a controversial entrance to the ARIA awards (Australian music awards) sporting a 'last supper' outfit of several cancelled celebrities.

Wentworth was born and raised in Buckley, 25 mins from Geelong and has slowly been climbing the ladders in the music industry. Wentworth is still a country town boy at heart.

The local pop artist walked the carpet with 12 life size models of celebrities who have been recently cancelled such as Lea Michele, Kanye, Kevin Spacey, Sia, Armie Hammer and Marilyn Manson, among others.

The models are all wearing biblical robes and are stationed across a long table with the words 'the last supper' embroidered across the front.

The outfit has been criticized for glorifying celebrities who have been removed from the spotlight, with critics saying that they were removed 'for a reason' and should not be publicised in a positive light.



"I'm not glorifying cancelled celebrities, I'm just opening a conversation' says Wentworth.

It's a commentary on cancel culture' says Wentworth. 'I have felt like an outsider my whole entire life. I know what it feels like to be on the outside looking in.' 'Cancel culture is toxic but at the same time it is the consumers and general public who are tearing down

these people. I'm simply making a commentary and asking the question "Do they deserve a second chance?"

'I believe in a way that the cancelled celebrities let it happen. You can either be cancelled or you can not let it happen. We have many celebrities who just wont accept it. Jeffree Star, James Charles or Taylor Swift to give some examples'

"Taylor Swift had the greatest comeback from being cancelled in modern popular culture history by using the cancellation and making it into an album and an era."

Wentworth the artist arrived to the ARIA awards red carpet in 2015 being birthed from a giant cashmere cocoon so the controversy isn't completely shocking. This artist is clearly one who likes to push the boundaries.

Wentworth is a 25 year old emerging male pop artist based outside Melbourne, Australia but frequents Los Angeles. You can hear Wentworth's new single 'Wiggle Wiggle Boom' on all streaming services. 'Wiggle Wiggle Boom' is a single off his debut EP 'POP GENIUS' which is also available to stream You can find out more at www.wentworth-official.com

Playgroup inspiration Melissa Oberin

Melissa Oberin had been taking her granddaughter Delilah to Winchelsea Playgroup for only a couple of months before a bulk graduation of kids into kindergarten left the group at a standstill.

Delilah was the last child left, and by the time Melissa helped revive the group and its activities, welcoming new families, she found that she had 'inherited the place'.

Years and countless volunteer hours later she helped the group negotiate and survive a very different type of standstill during COVID-19 lockdowns, and now she is being hailed as Surf Coast Shire's latest Local Legend.

The award recognises Melissa's community-focused leadership helping children and families connect, learn and thrive. "Melissa is instrumental in welcoming families to playgroup, either

with new babies or families who are new to the area," her nominator said. "She can be credited with keeping playgroup alive during COVID-19 lockdowns by sharing through Facebook and maintaining social connectedness. "Melissa is the lifeblood of the group."

Melissa said she felt honoured to be identified and celebrated as a Local Legend. "I get lots of thanks from the parents every session but I guess to have it recognised more widely is a real honour, and lets me know I'm doing the right thing," she says. "It's working for everyone else, and they must be enjoying it."

Delilah has now skipped off to primary school and second granddaughter Willow is enjoying all of the interaction and fun the playgroup has to offer. "So it used to be Delilah and I would go in and set everything up, and now Willow and I set everything up," Melissa says.

Sessions were weekly on a Thursday but switched to fortnightly while emerging from

pandemic lockdowns. Now with numbers strong they might return to weekly. "These days we have probably 15 kids. It has gone up and down but I found doing a theme each session helped the kids and parents to get involved," Melissa says.

Melissa lives in Highton but looks after her grandchildren in Winchelsea. She is mum to sons 29 and 30, works in aged care and apart from maybe helping out with after school care when her boys were young has never really worked in child care.

"It is good to see some parents make friends, quite a few of them start when they don't know anyone and they're actually forming relationships and then finding out they live across the road from each other, so I it's good for the parents as much as it is for the kids."

Winchelsea Playgroup meets 10am every second Thursday at St Thomas Anglican Church Hall. The group will meet for the last time in 2022 on 15 December, before resuming in February.

What's on in Winch

SINGING

Nine enthusiastic people sang loudly and somewhat in harmony in the Shire Hall last Wednesday. There is one last opportunity this year:

Wednesday 14th December at 5.00pm

All welcome - gold coin donation.

Winch Op Shop

CLOSED until further notice!

Due to recent water damage the Op Shop has closed while repair work is completed.

Shop stock was unaffected but has been relocated.

All proceeds to Hesse Hospital

WINCHELSEA HOSTEL AND NURSING HOME SOCIETY INC

Annual General Meeting

Notice is hereby given that the 2021/2022 Annual General Meeting for the General Public will be held at the Winchelsea Shire Hall and via Zoom on Tuesday 20th December 2022, at 4.00pm.

Please contact Hesse on (03)5267 1200 or reception@hesse.vic.gov.au to receive the remote link invitation.

Business

1. To confirm the minutes of the 2021 Annual General Meeting.
2. To receive the report of the Committee of Management and the audited Statements of Accounts for the year ended 30 June 2022.
3. To appoint the Victorian Auditor General's Office as auditor.
4. To elect officers of the Association and members of the Committee.

Carissa Brock
Secretary

VALE Mrs Leila Forster

Helen Rolls

Leila was a regular and faithful and much loved member of St Thomas's Anglican Church for many years.

She had a long and fruitful service and held every position on Parish Council (or Vestry as it was known) and was Treasurer for the Ladies Guild for years.

Leila even did lay preaching with a a riveting sermon when the minister was not available and she would take the service at Chelsea Lodge.

She had beautiful diction and read the Bible with such passion that she held you spell-bound!

She would sing and act in the Church Christmas Concerts and no doubt her time acting with the Winchelsea Repertory Society added to it!

She faithfully collated and edited the Parish Paper for years.

Her fellow parishioner Alison Erwin was in her first year of teaching at Wurdale when Leila was in grade 6!

Leila often said that the hymn "What a Friend we have in Jesus" was the core of her Christian faith.

Leila connected with the young ones services with companionship and enthusiasm and encouragement and

always remained interested in what they were doing.

Leila had a good memory and knew not only the church's history but the Winchelsea district as well.

She was an integral part of the community and was involved in so many things including the Garden club for years.

She was fit and walked everywhere carrying her groceries home and she played tennis well into her seventies.

She was dedicated and walked early to church each week to set everything up.

Her hearing deteriorated in the later years which was a challenge.

Leila was a delightful person and a fountain of wisdom and common sense.

She was missed greatly by us all when she bravely moved to live in Qld, when she was in her eighties, so she could live with her daughter.

We remember when she apprehensively took her first flight ever (to Qld) but came back converted to flying!

Leila has left a great legacy and will always be remembered with love and gratitude and we at St Thomas's offer our deepest sympathy to her whole family on their sad loss.

Water Delivery

WAZZA'S
WATER CARTAGE

*Stainless Tanker Up to 22,000 ltr loads
Barwon Water Registered*

Domestic & Rural Water Supplies

Call Wazza
Mob: 0428 877 260
Email: wazza@wazzas.com.au Web: wazzaswater.com

Kyeema
Rural Fencing Pty. Ltd.

Jason Armstrong & Jay Hawker

1080 Prices Lane, Ombersley, Victoria, 3241
0419 565085 (Jason)
0416 585817 (Jay)
kyeemafam@kyeemafam.com.au

Also incorporating domestic and rural tree trimming services.

Winchelsea Men's Shed



For The Community

51 Hesse Street

Every Wednesday from 9:30am

New members always welcome

For more detail contact:
Ray Atkinson (Co-ordinator)
0407 839 139
or
winchmenshed@gmail.com

Need a job done?
Woodworking jobs,
furniture repairs, small jobs.
Drop in and talk to us.

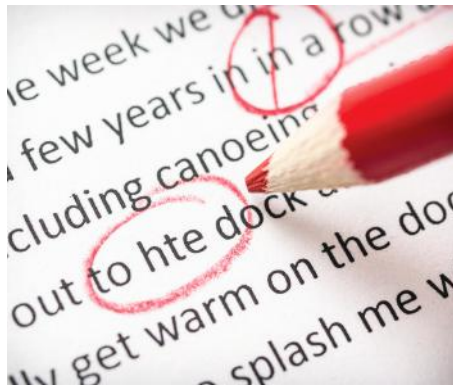
Your Star - your articles, your way

By Tony Phelps,
Star Committee

A reader of The Star, "Apostrophe Lover" in Geelong, recently wrote in to The Star to comment on an increase in the number of errors, that a normal read would pick up. While recognising that the paper is a team effort by a few volunteers and at the mercy of its story providers, he thought it would be great if someone could proof-read it before each weekly edition went off to print.

Proofreading is an issue that comes up every now and then. Unfortunately, it simply isn't possible to fit it into the workflow given the timings for weekly production mixed in with the volunteers needing to fit in what they do for The Star with the rest of their lives.

It would mean at least a day's delay to allow for each week's edition to be sent out for proofreading, returned with changes, sent out again etc. - all of which would need to fit in with someone's normal work/home life. And that assumes that a roster of reliable and consistent proofreaders could be found. Accordingly, the deliberate decision has been taken to skip proof-reading.



In addition, at the Committee level we have discussed proofing and the degree to which the Editor and/or Compositor could or should change or correct articles.

Our opinion, and our policy, is to print submitted articles as provided in order to retain the spirit of a community newspaper and the diversity of content that implies. If time permits ahead of deadlines, the Editor may contact a writer, but it is relatively unusual to have the luxury of enough time for such to-ing and fro-ing.

It's worth adding that the same goes for the adverts displayed in The Star - as with the articles, we print what has been provided. We find many of our advertisers are happy to support this community newspaper and that is their primary motivation.

All the same, with a weekly print run of

250 copies. and around 570 online subscribers, we believe there is significant benefit to our advertisers. Do you advertise in The Star, or know someone who does? Maybe double-check that that advert is coming out how you'd like.

Apostrophe Lover did make a great suggestion that any web-links and also adverts be clickable links. This would let our online readers simply tap or click on a link or advert to go straight to the associated webpage or website instead of having to retype or copy-and-paste. This idea is under investigation - hopefully we can gradually work towards making all adverts and links clickable over the coming months.

In the meantime, our thanks for Apostrophe Lover Peter for getting in touch with his thoughts and ideas. Constructive feedback is always hard to come by, so we appreciate the time and effort of sending us some!

Remember, The Winchelsea Star is a non-profit community newspaper - YOUR non-profit community newspaper. There are no photographers, journalists, writers or even staff at all.

If you have a story or an article in you, all it takes is an email to editor@wincheslestar.org.au, hopefully with a photo/image or two for visual interest. We and our readers look forward to hearing from you.

DownRyte Excavations

- Excavations
- Drilling and Piling
- Rock Placement
- Tree and Stump Removal

Sean Hunwick
Mobile: 0409 447 288
Email: downryte@activ8.net.au

direct
TEMPORARY
FENCING

FOR HIRE - SUPPLIED & ERECTED - 7 DAYS
GEELONG - BELLARINE - COLAC - SURF COAST
PHONE CAM 0417 310 800

Knuckey's Winchelsea
Ph: 5267 2011

Knuckey's have in stock a complete range of batteries to suit tractor, heavy machinery, cars, utes

The largest range of the best oil for your vehicles—**CASTROL**—
'when only the best will do'

The largest range of V belts.
A, B, C, D M Sections
Bolts and nuts for all occasions
Steel cut to size

AFS BOOKKEEPING

"Your local bookkeeper"

Bookkeeping
Administration
Payroll
BAS Services
Xero / Myob
Reckon / Quickbooks
Registered BAS Agent

Angelique Snetselaar
0456 077 485

info@afsbookkeeping.com.au
www.afsbookkeeping.com.au

TAX PRACTITIONERS BOARD REGISTERED

Winchelsea Star

Articles are most welcome and must carry the name and address of the sender.

Weekly deadline is 5pm Friday.

Copy for sports results and weekend events is Sunday 6pm (4pm for hard-copy articles/results left at IGA) unless by prior arrangement.

Copy should be emailed to news@winchelseastar.org.au or left at IGA Supermarket.

The Winchelsea Star reserves the right to edit or not publish any article.

Views expressed are not necessarily those of the Winchelsea Star or its Committee.

500 online subscribers, 250 copies printed for outlets around Winchelsea.

Free subscription to digital version at winchelseastar.org.au

© Winchelsea Star Org. Inc.
All rights reserved.

Winchelsea Star Organisation Inc.
Reg. No. A1479, ABN: 57 207 411 958
winchelseastar.org.au
Po Box 5, Winchelsea, Vic, 3241

Editors:

Cerrie Fogan, Yvonne Stevens
Judy Cameron
editor@winchelseastar.org.au

Advertising:

Sasha Gauntlett and Neil McInnes
advertising@winchelseastar.org.au
0408 102 802

Layout/Sub Editors:

Susan Corby, Charles Corby
Stuart Fountain
production@winchelseastar.org.au

Committee

President: Mick O'Mara
president@winchelseastar.org.au

Treasurer: Cathy Cheadle
treasurer@winchelseastar.org.au

Secretary: Tony Phelps
secretary@winchelseastar.org.au

Committee Members:
Linda Carter

Printer: Mud Group
Website: Winch Websites



WINCHELSEA CONCRETING

· Driveways · Sheds · Decorative Concrete · Raft Slabs

Robert Murphy

☎ 0438 235 237

✉ winchelseaconcreting@outlook.com



mels MEL'S DANCE CENTRAL

2023 DANCE ENROLMENTS NOW OPEN!

Winchelsea dance
classes commence
1st February 2023

REGISTER NOW

www.melsdancecentral.com.au

Pre-School - Adults
Beginner - Advanced Levels

Mowers & Chainsaws

Repairs to all makes and models of ride on mowers, domestic mowers, pumps, chainsaws, brushcutters and small engines.

Trading Hours: Mon - Fri 8am - 5pm Saturday 8am - 12 noon

5267 2266 Cnr Princes Hwy & Lennox St Winchelsea

www.allaboutmowers.com.au

accounts@allaboutmowers.com.au



Winchelsea Bowl competition at the Winchelsea Golf Club

Ann Davis

On Monday December 5th the Winchelsea Rose Bowl competition was held at the Winchelsea Golf Club. Players from 12 clubs made up the field of 36.

The winning team with 90 pts was Inverleigh, congratulations to Lesley Richardson, Helen Gaylard and Deb. Nicholls.

Second was Ocean Grove with 88pts and Lorne(1) on 86pts.

A Grade winner - Deb. Nicholls Inverleigh, 34pts

B Grade winner - Corrie Butcher Ocean Grove 41pts



Helen Gaylard, Deb Nicholls and Lesley Richardson.



Deb. Nicholls and Corrie Butcher.

Women's Workshop

Any ladies out there who are interested in learning some workshop and home maintenance skills?

The Winch Mens' Shed are running free workshops starting in August. Let us know what you would like to learn and what days and times are most suitable. We can tailor the workshop to cover what is most requested and on days that suit most.

If you are interested in attending please contact the Men's Shed on 0407839139 (Ray) or email winchmenshed@gmail.com

WCC Round 8 Results



A-Grade

Winchelsea 169 VS Wellington 0/14

M Partridge 52
D Hampshire 29 not out
N Bellman 18

B-Grade

Winchelsea VS Ocean Grove 5/274

G Watson 2/54
G Schreurs 2/64

Brought to you by



MCFARLANE (nee Gladman), Margaret Grace

Passed away peacefully on the 1st of December 2022, aged 87 years. Loving wife of Fred (dec). Cherished mother, mother-in-law and 'Nanna Fred' of Heather, Stuart, Robert, Lyn, Chris, Alex and all their loving families.

*May the winds of love blow softly,
and whisper for you to hear,
that we will love and remember you,
and forever keep you near.*



Geelong
Ph: 5221 4788
www.tuckers.com.au

MCFARLANE (nee Gladman), Margaret Grace

Family and friends are invited to attend a Service to Celebrate the Life of Mrs Margaret Grace McFarlane to be held at Tuckers Chapel, cnr Torquay and Pioneer Roads, Grovedale on WEDNESDAY (14th December) at 10.00am prior to interment in the Winchelsea Cemetery, McConachy Street, Winchelsea. Please visit tuckers.com.au for webcast details.



Geelong
Ph: 5221 4788
www.tuckers.com.au

Free Community Service Advertisements

Services and Activities in Winchelsea



TRAIN SERVICES

To Geelong

Mon - Fri

6:41 am, 7:59am, 11:34am,
2:01pm, 7:37pm

Sat and Sun

9:35am, 1:36pm, 7:18pm

To Warrnambool:

Mon - Fri

9:29am, 2:56pm, (to Colac
5:27pm), 6:45pm, 8:53pm

Sat and Sun

8:47am, 2:49pm, 8:37pm

Country Women's Association



7pm Second Wednesday of Month
Winchelsea Senior Citizens' Hall

Bus to the Hub

For reservations on the weekly bus
to the Eastern Reserve Hub,
please phone 52671202.

Surf Coast Mobile Library

Surf Coast Mobile Library
parked in Hesse Street
(outside Shire Hall) on Fridays
between 2:00 and 5:00pm
unless it is a Public Holiday.
Hesse St, Fridays, 2pm-5pm

Winchelsea Taxi

0429 672 888 or 5267 2888

Wheelchair accessible
10 seater bus available.

Winchelsea SES

Meeting and training
2nd Wednesday

Training 4th Wednesday

Visitors and inquiries welcome

0408 102 802

Winchelsea and District Combined Probus Club



Meets 1st Monday of the

month at 10am. Senior
Citizens Rooms, Harding
St, Winchelsea. New
members always
welcome.

Enquiries Linda 0439 817 263.

Body Therapy Classes

Yoga, Pilates, Qi Gung and Mindfulness Meditation Practices

Tuesdays 6.15pm \$13 Cash
Catholic Church Hall -School Term Only

Dr Haidee Benning, 0428 177 964

Winchelsea Playgroup

Every second Thursday 10am-12pm
St Thomas Anglican Church Hall
cnr Barwon Tce and Hopkins St, Winchelsea
Contact: Melissa 0456181268
Facebook - Winchelsea Playgroup 2019

New families welcome

Winchelsea Girl Guides

Our Unit meets at the Catholic Church
Hall, Harding St Winchelsea

each Monday 4.30pm-6pm

All girls 5yrs- 15yrs Welcome!

Contact Yvonne Orchard 0448 672 630

or Bonnie Stokes 0401 386 274

1st Modewarre and Winchelsea Scout Group

Joys: Tuesdays of school term 5-6pm

Cubs: Mondays of school term 6:30-8pm

Scouts: Tuesdays of school term
6:30-8:30pm

All at Modewarre Hall, Cape Otway Rd

Venturers: Wed at Walton's Rd Venturer Den

Contact Marie McPadden 0409 330147

Winchelsea Transfer Station

Opening Hours

Monday	Closed
Tuesday	2pm-4pm
Wednesday	Closed
Thursday	2pm - 4pm
Friday	Closed
Saturday	1.30pm - 3.30pm
Sunday	9.30am - 12.30pm

55 Cressy Road, Winchelsea.

Accepts household garbage,
mixed commercial and industrial waste,
mixed construction and demolition waste.

Accepts recyclable materials.

Accepts one recycle bin two waste bins.

Does NOT accept clean fill.

Winchelsea Girl Guides at Tallawalla Guide Camp Moggs Creek

The Winchelsea Girl Guides had a great camp at Tallawalla Guide Camp Moggs Ck over the weekend.

The theme was 'The Wizard of Oz' and they made mascots to represent each Patrol a Scarecrow, a Lion and a Tin Man.

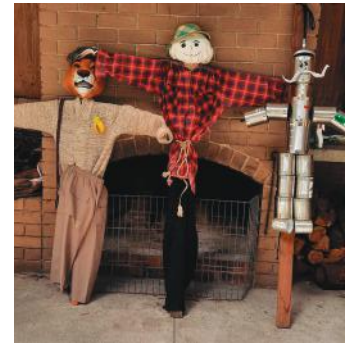
They also welcomed surprise visitors Aunty Em, who was looking for Dorothy and was helped by Linda the Good Witch of the North.

The girls ranging from 7 -12 yrs slept in the on-site insta-tents, and earned 'courage medals' for sleeping with no trouble all night. Well done girls!

They also received Hearts Tin Man for helping or showing kindness.

They had a night hike to the beach, and hiked to the picnic ground where they lit a fire and cooked hot dogs and bananas and chocolate.

Many thanks to the girls who came and the leaders Yvonne, Emily, and Teresa



who did a wonderful job preparing and running the camp.

Yvonne passed her assessment to update her camping qualifications.

We are looking for adults interested in helping at Guides next year,so contact Yvonne if interested Ph 0448 672 630.



**Winchelsea
Supermarket**

Trading Hours
Monday to Saturday
8.30am to 7.30pm
Sunday
10am to 7pm
Ph: 5267 2676
29 Main St, Winchelsea

Winch House - Occasional Care Report

by Tina Farmer,
Occasional Care Coordinator

Children settled in well at the beginning of the year. We had a couple of new enrolments as well as existing families.

We were fortunate enough to be able to have an end of year Christmas Party with families, outside, at the end of 2021. There was no food, however we still ran the raffle and raised \$490.70. We also had a visit from Santa - much to the delight of the children.

New enrolments continued throughout the year.

Unfortunately due to more bugs and viruses being around as well as the new ratios for under 3's (only 4 per day instead of 5) numbers were affected.

Sandra remains a stalwart fixture in the assistant role (Monday to Wednesday) and has been an enormous help, incredibly reliable and consistent. A great asset to the Occasional Care team.

Our casual pool of staff including Katy, Linda and Alicia have stepped in sometimes at last minute to fill spots when needed.

We are still struggling to permanently fill the Thursday/Friday assistant role. However Wendy has been utilising our casual pool, often filling spots weeks ahead.

Sheryl our lovely volunteer comes in once a week for a few hours which is always a great help.

Harry has continued to keep our grass area looking nice and trim, as well as fixing the odd toy etc.

This year has been the 1st since 2019 that we haven't had to endure any lockdown, so finally things are getting back to normal.

Thanking you all for your support throughout the year.

DAVIC AG

CONTRACTING AND EARTHMOVING

For all your harvesting needs
Mowing, raking, round bailing, paddock prepping, spreading and sowing

Call Dave on **0417 579 973** Bambra

Winchelsea Trading—agents for:

UNIVERSAL TOOL SHARPENING

For all your sharpening needs
Rural—Domestic— Industrial

- Hand tools
- TCT Blades
- Chainsaws
- Kitchen tools
- Garden tools
- Brobos
- Firewood saws
- Bandsaws

- Chipper & planer blades
- Drill and router bits
- Dog & horse clipping blades

5248 2061

‘We give you the edge you need’

NO MATTER WHAT YOUR PROBLEM, DODDS ELECTRIX CAN DEFUSE THE SITUATION.

RURAL, INDUSTRIAL, COMMERCIAL. DOMESTIC
PHONE 0438 887 360
EMAIL: DODDSY@FASTMAIL.FM
PO BOX 36 BIRREGURRA, VICTORIA 324
REC: 17520 ABN: 64 581 250 880



5234 6585 0417 385 984
For all your domestic & stock water.
Also available for road and civil construction
Local owned and operated.



St Vincent de Paul Society
good works


Covering Meredith, Bannockburn, Anakie, Lethbridge, Inverleigh, Teesdale, Shelford, Elaine and Winchelsea

52219170

Monday - Friday 9am to 2 pm
<http://www.vinnies.org.au>

A caring Catholic organisation offering “a hand up” to all people in need.

TRENCHES & HOLES PTY LTD.



PHILLIP ROBERTSON
0427 672 945
WINCHELSEA

- General Earth Works
- Driveways
- Trencher
- Kanga Loader
- Grader
- Excavator Work (3.5 & 6.5 Tonne)
- Tip Truck
- Rock Breaker
- Post Holes & Shed Footings

A.B.N 74006896898



WINCH WEBSITES
WEB SOLUTIONS SIMPLIFIED.

WEBSITES

**GROW business
INCREASE reach
SAVE time**



Find out what a website could do for you
winchwebsites.com.au
04 887766 20

CONCRETER

Alister Aitken

No job to big or small

- Driveways - Carports - Crossovers - Footpaths - Sheds Slabs - Colored Concrete - Concrete sealing - Exposed Aggregate - & more -

Call or text for a no obligation free quote

Servicing our local Winchelsea & Surrounding Areas

alaitken.aa@gmail.com or Alister - 0411 871 950

A.B.N 47 228 574 460

Property Slashing and Block Mowing

FREE QUOTES

Competitive rates for property slashing and mowing of your block. Servicing entire of Surfcoast shire and surrounding shires.

Call Scott TODAY to discuss your needs and to book in.

0408 523 290

Located WINCHELSEA



IN & OUT LOGISTICS
A Reliable and Local business

LIONS CLUB OF WINCHELSEA

PAPER RECYCLING


Paper depot rear of Senior Citizens Rooms Harding Street
NEWSPAPERS, MAGAZINES, PHONE BOOKS WANTED

SHEEP POO FOR SALE

\$5 per bag.
Available at paper depot rear of Senior Citizens Rooms Harding Street most mornings between 10 and 12 or contact David on 0410 029 857.



RAISING FUNDS FOR OUR TOWN & DISTRICT
5267 2011 or 0408 520 606



mainly music est. 1990

Fun, Interactive music sessions for pre-school children (0-4 y.o.) and parents/caregivers

When: Mondays from 10 to 11 am (runs during school terms)
Where: St Thomas' Hall
25 Barwon Tce.

To Enquire ring: 0407838256

52672192 **R & K Creative Framing**
for all your framing needs

free quotes
pension discount
specialist in Age & Disability Modifications

Ray & Kim Jansen
10 Witcombe st
Winchelsea 3241

Ray The Home Maintenance **HANDYMAN**
abn 47928623462

0414672192

Winchelsea Churches

All the churches of Winchelsea are happy to welcome any who would like to join them for worship.

St Thomas' Anglican Church

in Barwon Terrace.

On Sunday 18th December St Thomas's will meet with the Uniting Church in Hesse Street, at 9.30 am.

Activities at St Thomas' during the week.

Monday 10.00 am - Mainly Music.
Wednesday 10.00 am - Know Your Bible.
Thursday 10.00 am - Playgroup, meets fortnightly, next time, last time for the year, 15th December.
Friday 10.00 am - Know Your Bible.

Phone Rev Lynne Clarke 0477 672 042
stthomaswac@gmail.com

Winchelsea Uniting Church

in Hesse Street meets at 9.30 am every Sunday morning.

Worship is followed by morning tea.
Phone 0475 777 301
uca.winchelsea@gmail.com

Thought for the Week

"When you find yourself reaching for your phone, stop for a moment and check in with yourself about your purpose. Ask why? If there is no reason, or it's not a compelling one on reflection. Then put the phone down and make better use of your time."

John Bader
Lay Preacher, Uniting Church

Winchelsea Uniting Church

Hesse St, Winchelsea 3241
uca.winchelsea@gmail.com
0475 777 301
Services 9.30am Sundays

St John's Catholic Church

Harding St, Winchelsea 3241
Father Joseph Panackal
0404598558

St Thomas' Anglican Church

Barwon Tce, Winchelsea
Rev'd A. Lynne Clarke
stthomaswac@gmail.com
0477 672 042

St John's Catholic Church

In Harding Street meets for Mass at 6.00pm on Saturday evenings.

Baptism preparation is on the first Tuesday of the month at St Mary MacKillop Church, Bannockburn.

Please contact Anita, 0409 432 833 or Father Joseph Panackal, 0404 598 558

MASS TIMES
CHRISTMAS MASSES
Winchelsea 9am Dec. 25

NEW YEAR MASSES
New Years Eve
Winchelsea 6pm Dec. 31



3D design and visualisation
richard@studiobutcher.com | 0413 168 741
architectural models | 3D prints | product development

Simco Plumbing and Gasfitting

24/7 Emergency service Ph:0400643976

- All General Plumbing and Gasfitting
- Roof and Gutters, Hot Water service changeover
- Split Systems, Air Conditioning and Wood Heaters
- Irrigation, Septic and Treatment plants
- Excavation, Bobcat and Tipper
- Rain water Tank installation
- Renovations and Extensions
- Gas conversions and servicing

Simon McGillivray
Lic:109610. Free quotes, Fast and friendly service



St Vincent de Paul Society
good works

Covering Meredith, Bannockburn, Anakie, Lethbridge, Inverleigh, Teesdale, Shelford, Elaine and Winchelsea

52219170

Monday - Friday 9am to 2 pm
<http://www.vinnies.org.au>

A caring Catholic organisation offering "a hand up" to all people in need.



Matthew Partridge
p 0418 672 334
e mrpsteelworx@yahoo.com.au

Welding Service

- Onsite welding
- Farm maintenance
- Farm machinery & equipment repairs
- Cattle & sheep yards
- Custom built trailers
- Supply & install gates

**BUILDING?
RENOVATING?
NEW HOME?
EXTENSION?**

- ◆ **BUSHFIRE ASSESSMENTS**
- ◆ **6-STAR ENERGY RATINGS**

**BRUCE ST. CLAIR
0435 892 799**

CORPORATE MEMBER



Building Designers Association Victoria

OZ TREES NURSERY & TREE PLANTING SERVICES

- Affordable seedlings—over 200 species
- Complete plantation service—farm forestry, shelter, aesthetics
- Deep ripping & mound ploughing. Rotary bed forming
- Our experienced staff will help you select species for your site conditions and needs

Also available—tree planting tools, milk cartons, plastic tree guards & bamboo stakes

569 Warrowie Rd. Colac
P: 5233 6280 F: 5233 6393
E: info@oztrees.com.au
W: www.oztrees.com.au
Open Monday—Friday
9am—4:30pm



Phone OzTrees for professional advice,

Plasterer & Painter

Daryl Hecker

Domestic & Commercial Renovations & Repairs
Suspended Ceilings
Dustless Sanding
New Homes
Extensions



Ph 0419 194 799

Antique Repairs

By **Doug Burns** est. 1976

- All Furniture
- French polishing
- Carving
- Veneering
- Wood Turning
- Porcelain



Unusual Requests Welcome

180 Barwon Terrace, Winchelsea

0428 672 704

B & H Modifications

Bob Verity

55 Stephenson Road
Winchelsea 3241
Ph: 5267 2467
Mobile: 0411 610 678



Industrial Sewing Machine Work

Caravan Annexes, Trailer Covers, Shade Sails, Alterations and Repairs to Camping and Tents. Clear PVC Blinds Repairs to CLEAN Horse Rugs No Job Too Small
Email: bobverity@southernphone.com.au



Winchelsea Community House

Hours: Monday – Friday, 9.00am - 2.00pm

Address: 28 Hesse Street, Winchelsea

Phone: 5267 2028

Email: reception@winchhouse.org.au



**DID YOU KNOW WE RUN AN OCCASIONAL
CHILDCARE SERVICE MONDAY TO FRIDAY
FROM 9AM TO 2PM?**

**IF YOU HAVE A CHILD THAT IS 3 YEARS
AND OVER WE CURRENTLY HAVE SOME
VACANCIES FOR 2023.**

**THESE PLACES WILL FILL QUICKLY SO CON-
TACT US NOW TO SECURE YOUR PLACE**



**WINCHELSEA COMMUNITY HOUSE IS
LOOKING FOR SOME TUTORS TO RUN PRO-
GRAMS AND ACTIVITIES IN 2023. IF YOU
HAVE A PARTICULAR SKILL THAT YOU
WOULD LIKE TO SHARE AND TEACH OTH-
ERS WE WOULD LOVE TO CHAT WITH YOU.**

TYPES OF SKILLS MIGHT BE

COOKING

ARTS AND CRAFTS

SOCIAL MEDIA SKILLS

YOGA/MEDITATION

AUSLAN

**KEY DATES FOR CHRISTMAS AND NEW
YEAR**

**LAST DAY FOR THE OFFICE FOR 2022 WILL
BE THURSDAY 22ND DECEMBER (CLOSING
AT 12 NOON)**

**FIRST DAY BACK FOR THE OFFICE WILL BE
MONDAY 16TH JANUARY, 2023**

**LAST DAY FOR OCCASIONAL CARE IS
MONDAY 19TH DECEMBER, 2022**

**FIRST DAY BACK FOR OCCASIONAL CARE IS
WEDNESDAY 18TH JANUARY, 2023**

**WINCHELSEA COMMUNITY HOUSE AND
SHIRE HALL ARE HAVING A COMMUNITY
EXPO ON FRIDAY 24TH FEBRUARY, 2023
FROM 2PM-7PM.**

**ALL COMMUNITY GROUPS ARE WELCOME
AND ENCOURAGED TO PARTAKE (NO COST).**

PLEASE EMAIL

**shirehall@winchhouse.org.au to book a
place for your community group.**

2023 ACTIVITIES PROGRAM

STAY TUNED FOR WHAT IS COMING IN 2023.



Winchelsea Community Facebook pages

What's on in Winchelsea

**FLYERS, LOCAL EVENTS,
SMALL BUSINESS,
PROMOTING WINCHELSEA**

facebook.com/WhatsoninWinchelsea

Winchelsea FREE

FREE ONLY

facebook.com/groups/winchelseafree

Winchelsea Community Information AUSTRALIA

POSITIVE DISCUSSION

facebook.com/
groups/207538644446972

Winchelsea Classifieds 3241

FOR SALE ONLY

facebook.com/
groups/216942861684082

Winchelsea Lost and Found

LOST PETS

facebook.com/
groups/768187693217518

Winchelsea Op Shop

facebook.com/
HospitalAuxiliaryOpShopWinchelsea

Winchelsea Tea Rooms (Community Centre)

facebook.com/WinchelseaTeaRooms

Winchelsea Community House

facebook.com/
winchelseacommunityhouse

Winchelsea Coronavirus Community Support Group

facebook.com/
groups/2676957719207927/

The Green Winchelsea Residents

facebook.com/
groups/515322772623126

Growing Winchelsea Inc

facebook.com/growingwinch

Winchelsea Star

winchelseastar.org.au/step/subscribe/

Winchelsea Movie Club

facebook.com/winchelseamovies

Winchelsea Community Market

facebook.com/
winchelseacommunitymarket

Winchelsea Land and River Care Group

facebook.com/envirowinchelsea/

Upper Barwon Landcare Network

facebook.com/UpperBarwonLandcare

Winchelsea & District Historical Society Inc.

facebook.com/
Winchelseaanddistricthistoricalsociety/

Winchelsea Wildlife Shelter

www.winchelseawildlifeshelter.com/

SCARS - Surf Coast Animal Rescue Service

facebook.com/groups/415211698950674

Winchelsea Gardeners

facebook.com/
groups/779878518703025

Winchelsea & District Historical Society

facebook.com/
Winchelseaanddistricthistoricalsociety/

Winchelsea Repertory Society Inc

facebook.com/winchrep/

Winchelsea Globe Theatre

facebook.com/Winchelsea-Globe-Theatre-164790897641678

Winchelsea Uniting Church

facebook.com/winchelseaunitingchurch

St Thomas' Anglican Church

facebook.com/StThomasWinchelsea

St John the Baptist Catholic Church

facebook.com/pages/Winchelsea-Catholic-Church/101775670163180

Winchelsea Mainly Music

facebook.com/
groups/668500343953191/

Winchelsea Health Club

facebook.com/WinchelseaHealthClub

Winchelsea Playgroup 2019

facebook.com/
groups/551663435367031

Winchelsea Girl Guides

www.guidesvic.org.au/

Winchelsea/Modewarre Scouts

facebook.com/1stModewarreScouts

Winchelsea Fire Brigade

facebook.com/winchelseafirebrigade/

Winchelsea SES

facebook.com/groups/WinchSES

Country Women's Association - CWA Winchelsea Branch

facebook.com/pg/CWAWinchelsea/

Winchelsea Bowls Club

facebook.com/Winchelsea-Bowls-Club-533783333344345/

Winchelsea Blues Cricket Club

facebook.com/groups/8999049476/

Winchelsea Blues FC

facebook.com/WinchelseaFNC/

Mel's Dance Studio

facebook.com/melsdancecentral

Winchelsea Golf Club

facebook.com/winchelseagc/
facebook.com/
groups/1324943804676697

Winchelsea Kyokushin Karate Club

facebook.com/winchelseakyokushin

WYLD Winchelsea Youth Leisure and Drop in

facebook.com/
groups/569737570027065/

Lions Club of Winchelsea

facebook.com/LionsWinchelsea

Winchelsea Probus

10am 1st Mon month at Sen Citz Hall



Great Victorian Bike Ride

By Linda Carter

Last week end Winchelsea was invaded by hundreds of bike riders from the Great Victorian Bike Ride.

Roads were blocked and the traffic lights controlled by flaggies. It was a perfect day and I am sure the local traders did well as did the Lions Club with their chuck wagon. They ran out of sausages twice.





Staircases | Feature Trusses | Tiling
New Homes | Extensions | Renovations

Call Adam on 0412 234 306



@sheoak_constructions
Sheoak Constructions



Café La Hoot

have you tried 'owl' coffee?

1 willis st cafelahoot@gmail.com 0407 528 999

Big on products. Big on service. And big on local banking

Find out more. Call us on 5267 3189 or search Bendigo Bank Winchelsea & District.





Community Bank
Winchelsea & District



Chiropractic - Remedial Massage - Myotherapy - Sound Healing - Breathwork



Chiropractic care for:

Stress & Anxiety	Pain Management
Body Aches & Tension	Family Wellbeing
Poor Sleep	Health Longevity

03 5267 2240 Shop 4/21 Hesse St Winchelsea   <https://onebodychiropractic.com.au/>




Winchelsea Medical Clinic

Located at 36 Main Street, Winchelsea 3241

For any enquires or bookings please contact the clinic on 5292 8028.
Or visit our website: www.winchmc.com.au

Opening Hours:
Monday - Friday 8:00am - 5.00pm
(Monday Evening Clinics available and selected Saturdays)



Our clinic accepts online bookings via the app called HotDoc. Download the app on the App Store or Google Play or head to our website.



Aquafire Healing
TRANSFORMING YOUR HEALTH THROUGH THE HEALING POWER OF NATURE

**NATUROPATHIC MEDICINE • HERBAL MEDICINE
NUTRITIONAL MEDICINE • HOMOEOPATHY
REMEDIAL MASSAGE**

www.aquafirehealing.com
Ph: 0415 530 276



NATURAL GAS CONNECTIONS

M. & L DRAYTON PLUMBING SERVICES

YOUR LOCAL LICENSED

- PLUMBERS (24356)
- GAS FITTERS
- GAS CONVERTERS
- CARBON MONOXIDE TESTING

MARK 0428 520 142



Moriac Veterinary Clinic
0447 781 089
PHONE 24 HOURS
784 Hendy Main Road Moriac
info@moriacvet.com
www.moriacvetclinic.com.au
HOURS // Monday - Friday: 8am - 5pm



Lupton BUILDERS
SPECIALISING IN QUALITY




REGISTERED Building Practitioner

• NEW HOMES	• EXTENSIONS	• RENOVATIONS
• ALTERATIONS	• DECKS	• PERGOLAS
• GARPORTS	• VERANDAHS	• RE-GLADS
• BATHROOMS	• WINDOW REPLACEMENTS	

LEIGH LUPTON
0438 840 104

CHRIS LUPTON
0407 681 514

LEIGHLUPTON17@GMAIL.COM Est. 1977



TANGO
Pet Grooming

RONNIE.
Winchelsea's pet groomer.
For appointments
0436 008 989
tangopetgrooming@gmail.com



Got **mild** COVID-19 symptoms?

**GET THE
RIGHT HELP
FOR YOUR
RECOVERY**



Vaccinations provide good protection against COVID-19, so many of us can safely recover at home. And COVID early treatments are available if you're high risk.

Get support to match your symptoms at
coronavirus.vic.gov.au/recovery



The home of Winchelsea's future graduates

➔ www.journey.edu.au

JOURNEY
Early Learning



Water Supply Specialists

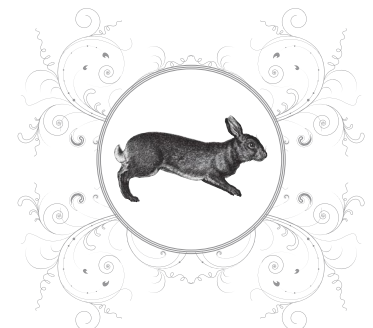
WATER SOLUTIONS

74 Dennis Street, Colac
5231 1861



ALL THINGS WATER:

- PUMPS • PIPES
- FITTINGS • TANKS
- POOL CHEMICALS
- IRRIGATION
- WATER PURIFICATION
- SOLAR • REPAIR



Breeze Health and Wellness, Exercise Physiology

32-34 Main Street, Winchelsea (old post office)

Chronic disease? Injured? Wanting improved athletic performance?

We can help you manage, rehabilitate and prevent many common ailments through movement.

Speak with your GP about a referral for a care plan.

Private health accepted - no referral needed.

Call Brenton on 0428 790 023 to discuss or email breezehealthandwellness@gmail.com

Exercise is Medicine, Motion is Lotion. Move with Ease at Breeze.





Volunteers Required

- Bus Driver & Outings Assistant
- Resident Visitor
- Events and Activities Assistant
- Group Wheelchair Walks Assistant
- Appointments Escort
- Social Support Activities
- Gardening - Winchelsea

Volunteers are essential to our aged care system, supporting the wellbeing of older people in their homes and in residential settings



For more information please contact Jessica Culhane, Communications and Community Partnership Officer via phone on [031 5267 1200](tel:03152671200) or via email jculhane@hesse.vic.gov.au

Funeral Planning

Working out what is best for you.
Prepaid Funerals, Funeral Bonds, Pay-by instalments...

There are many options and its important to make the right choice.

Alyson Burchell will be available by appointment to answer any questions about funerals and planning ahead.

For more information or to make an appointment contact Sue on 5221 4788

Tuckers Community Office,
Surf Coast Taxation Services, 22 Willis Street,
Winchelsea

First Tuesday of the Month,
by appointment 10.00am - 12.00pm



Caring for families since 1883

Tuckers
Funeral & Bereavement Service
*...for a life worth celebrating*5221 4788
www.tuckers.com.au

HF RICHARDSON

PROPERTY

Servicing all your real estate needs

Ken McDonald **0418 524 150**



Residential | Rural Lifestyle | Agricultural Farms

Winchelsea Towing

24 Hour Accident and Breakdown Towing

0418 535 402



Wightons Lawyers

Dispute Resolution & Litigation

Debt Collection

Property Law

Wills & Estates

Powers of Attorney

Business Law

Family Law

By appointment only

22 Willis Street, Winchelsea
ph. 5221 8777

www.wightons.com.au

AVAILABLE FOR HIRE

Vermeer and 4in1 bucket

Augers

Forks

Smudger



For more information
phone 0409 433 687 or
visit our facebook page
MGT Carpentry

MGT CARPENTRY



R.A.K. DAVIS & SONS

CARTAGE CONTRACTORS

WINCHELSEA

SUPPLIER OF ALL QUARRY MATERIALS, TRUCK HIRE

CARTAGE OF GRAIN, LIME, GYPSUM & SUPER

LANDSCAPE & GARDEN SUPPLIES

56 WILLIS ST, WINCHELSEA

Ph – 5267 2094

Ryan – 0438 672 281

Email: rakdavis@bigpond.com

Winchelsea Star

Since 1977



ISSN 2202-6851



5234 6585 0417 385 984
For all your septic tank, grease traps and interceptor pits servicing.
Locally owned and operated

Green Lead Electrical

Connecting you to a greener future
REC 23618

0467 097 101



Servicing Geelong & the Surf Coast

Specialising in all residential electrical work including:

- Switch board & lighting upgrades
- Outdoor lighting
- Electrical safety checks
- Energy efficient LED lighting
- Ceiling sweep fans & ventilation
- Energy saving advice

Phone Martin Wilkinson:

0467 097 101

greenlead@outlook.com

132268-CG18-14

CHARLES STEWART

rma network Accredited Member

Charles Stewart & Company are leading livestock and real estate service providers covering Victoria's south west

	LIVESTOCK
Jamie McConachy	0418 522879
Peter McConachy	0408 522878
Matt Nelson	0428 315400
Gerard Bohan	0400 005541
Lachie Barclay	0438 346291
John Thornton	0408 526367
Dougal McIntyre	0439 575612
Ross Spitty	0419 539717



	REAL ESTATE
Michael Stewart	0418 520467
Daryl Osborne	0419 388341
Anthony McDonald	0418 593597
Gerard Bohan	0400 005541
Stephen Lugg	0417 556098
Josh Lamanna	0417 586032



Office
56 Bromfield Street, Colac
www.charlesstewart.com.au

Pixie Wash
Mobile Doggie Care
Dogs up to 20kg
Pixie Heath
0417 586 080

Winchelsea AUTO SERVICES
One stop auto shop
17 Alsop Drive

- ❑ LOG BOOK SERVICE
- ❑ AUTO ELECTRICAL
- ❑ TOWING
- ❑ AIR CONDITIONING
- ❑ CLUTCH & BRAKES
- ❑ TYRES
- ❑ WHEEL ALIGNMENT
- ❑ BATTERIES

CAR, TRUCK REPAIRS & Roadworthys
PH: 5267 3001
Mob: 0417 137 457