

HAZEL WYNN • RUPS STEWART • FRANCESCA WARNER


# COSMOS



EXHIBITION OPEN 8 - 30 MARCH

12PM - 6PM WEEKDAYS, 10AM - 2PM SATURDAYS

KINDLY SPONSORED BY

 RATHBONES

 PRIVATE  
& PUBLIC

Exhibition kindly sponsored by



Whilst the cosmos is vast, covering the entire physical universe, I'd like to focus on one part, the moon, and draw on events from 1969, today and 2026.

First there were the cosmonauts, Greek for "sailors of the universe", led by Yuri Gagarin, and they were followed by astronauts or "star sailors".

I was three when Apollo 11 changed our world, when we thought differently about space and where we lived, in the new context of seeing earth from afar. Man had walked on the moon, everything was now possible.

Fifty-five years on, and this year is full of space themed enterprise and an increasing number of rocket launches. And so through one lens this Cosmos exhibition is perfectly timed and themed.

Artemis, Apollo's twin sister in Greek mythology and the latest NASA program, is scheduled to land on the moon in 2026. I mention this upcoming event because Artemis will enable the first woman to walk on the moon. With this exhibition opening on International Women's Day, it's a link to highlight, and just as Neil Armstrong's words brought colour to the black and white images we saw, I wonder what she will say, and hope it will resonate with the growing equality we're seeing on earth today.

Rathbones' cosmos - investment management - is often described as a blend of art and science and undoubtedly I'm seeing greater balance as we welcome more women into our industry. We've gone from so very few in the City when I started, to now for example seeing Rathbones in Jersey with over half of the company represented by women.

This exhibition thus offers a platform to reflect on the impact of women in the cosmos, with the knowledge that more is to come. The moon will soon welcome Artemis.

Jonathan Giles  
Managing Director



# INTRODUCTION

Welcome back to Private & Public Gallery which has been closed for a few months whilst I took a short sabbatical aimed primarily at touring the prestigious museums, art fairs and galleries of Europe. Having staged 60 shows in the last 6 years I felt it was important to take a step back and soak up emerging artistic and exhibition display trends and to devise an improved gallery programme for the year ahead.

Its been a great pleasure to reconnect with the wider art world and to reflect upon the bigger issues facing not just the arts but society in general. Making time to look, read and reflect upon the bigger picture is important for any creative organisation and its certainly helped me to gain a more philosophical understanding of life and the role that the arts can play in helping to enrich our community.

So it seems apt that our first exhibition of 2024 should be a showcase for three outstanding artists all of whom are inspired and fascinated by nature, the environment and the way things are ordered in the universe.

Cosmos is an alternative name for the universe and its nature and order. Usage of the word implies viewing the universe as a complex and orderly system and understanding the reasons for its existence and significance. The cosmos has been studied for centuries and covers broad disciplines in science, religion and philosophy all of which have historically been used to investigate aspects of the universe and its relationship to the natural world. In etymology the verb is also understood to suggest adorning or dressing, especially of women, and in ancient Greek kosmos made reference to ornaments of decoration, the dressing of hair and cosmetic treatments so as to provide orderly arrangements for the body as well as the mind.

Early Europeans viewed the cosmos as divinely created by God and as such were subject to constant combination, separation, and recombination. This was because they consisted of the chaotic elements of earth, air, fire, and water and this theory persisted until the Scientific Revolution, when the discovery that the Sun was in the centre of the planetary system rocked cosmological understanding to its core.

Nonetheless artists have been continually fascinated by depicting the universe and nature from the beginning of human history so it seemed most appropriate to provide a showcase for three hugely talented female artists who all, in some way, are inspired by the natural world and the cosmic forces that allow them to order their ideas and studio practice.

I'm delighted also that the exhibition will open on International Women's Day which has long sought to promote a world that's diverse, equitable and inclusive as well as being a place where difference is valued and celebrated. Some of the key themes for 2024 include forging women's economic empowerment, developing female talent and creativity and promoting creative and artistic expression in women of all ages.

On closing I would like to thank our exhibition sponsors Rathbones whose horizons are far and clear. Rathbones enduring success is built upon the stability provided by forward thinking, sensible long-term management and the lasting relationships they have formed in an ever changing cosmos.

Chris Clifford BA (Hons) MA  
Gallery Director - Private & Public

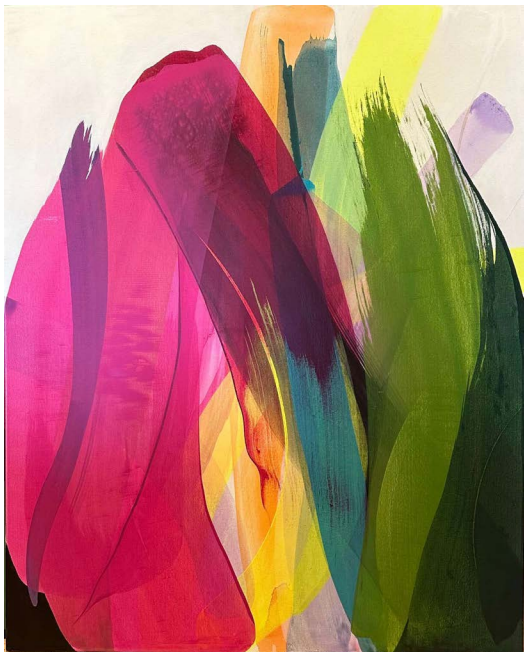
Contact: +44(0) 77977 14186 | [chris@privateandpublic.com](mailto:chris@privateandpublic.com)

# Hazel Wynn



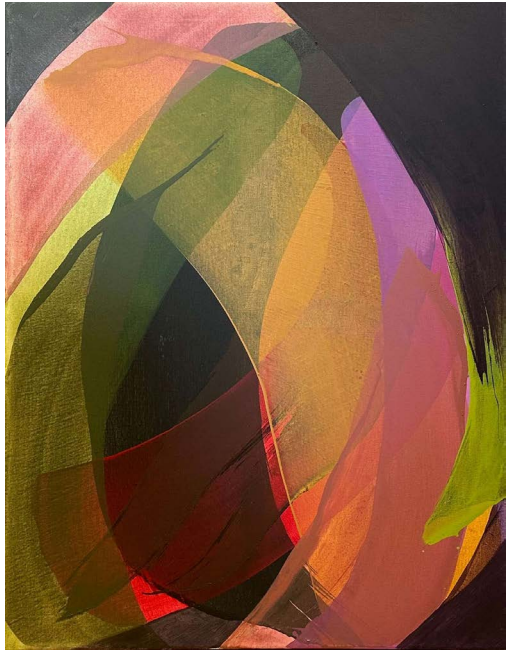
Hazel Wynn, a Jersey-born artist with a passion for colour, draws inspiration from the world around her to create vibrant and emotionally resonant paintings. Trained at Chelsea College of Art in London, where she specialised in Textile Design, Hazel's artistic journey has taken her from selling hand-painted textile designs internationally to dedicating her time to practicing Fine Art back in Jersey. Hazel draws her influences from early abstractionists and the Washington Colour group, particularly artists like Helen Frankenthaler, Morris Louis, and Paul Jenkins.

The core of Hazel's work revolves around the exploration of colour and its intricate relationships. Her paintings, such as the captivating "Back and Forth," serve as windows into her world of emotional responses to nature. The artist approaches her canvas with a deliberate technique, laying it flat and often on the floor. Through a meticulous process of pouring and pulling liquid pools of paint across the surface, Hazel navigates the delicate balance between control and unpredictability. Her carefully layered swathes of colour build depth and contribute to an overall sense of harmony and balance.

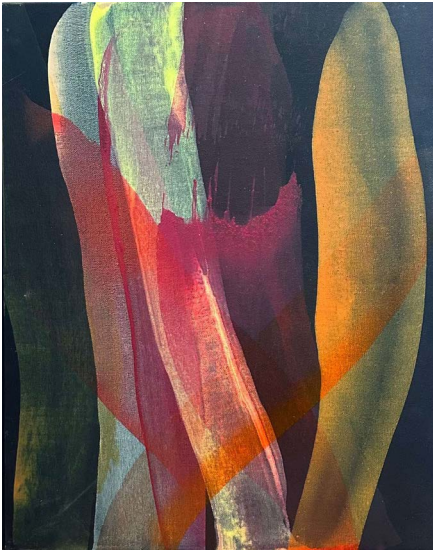


Lick of pink, 2024  
Acrylic on canvas  
120 x 150cm  
£2000+GST

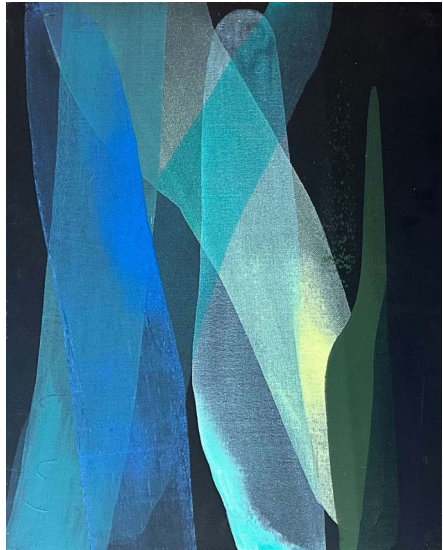




Slick, 2024  
Acrylic on canvas  
92 x 71cm  
£1150 +GST



Night Heat, 2023  
Acrylic on board  
40 x 50cm  
£450 +GST



Cool Night, 2023  
Acrylic on board  
40 x 50cm  
£450 +GST



Flick, 2024  
Acrylic on board  
40 x 50cm  
£450 +GST



**Evolve, 2024**  
**Acrylic on canvas**  
**91 x 71cm**  
**£1100 +GST**



Vitality, 2024  
Acrylic on canvas  
100 x 120cm  
£1600 +GST



**Go With It, 2024**  
**Acrylic on canvas**  
**120 x 100cm**  
**£1600 +GST**

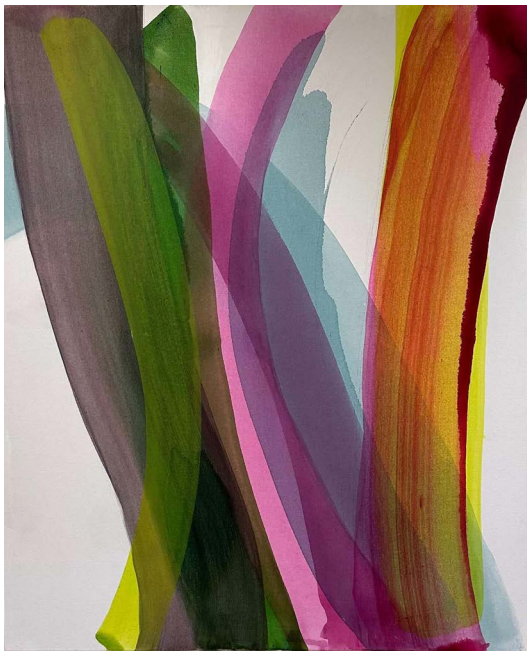


**Energise Me, 2023**  
Acrylic on canvas  
151 x 100cm  
£1850 +GST

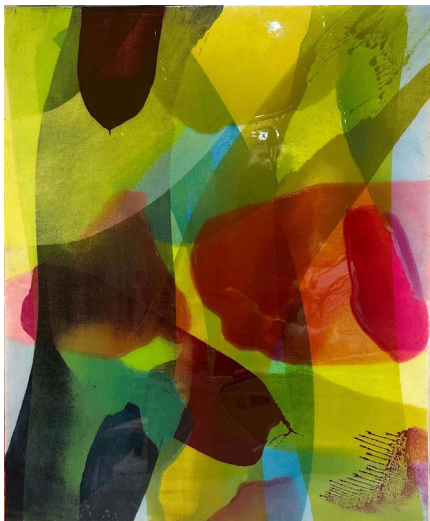


Faleesha, 2023  
Acrylic on canvas  
100 x 100cm  
£1600 +GST





**Flukey, 2023**  
**Acrylic on canvas**  
**100 x 120cm**  
**£1650 +GST**



**Intwined, 2023**  
Acrylic on board  
46 x 55cm  
£450 +GST



**Keeping It Light, 2024**  
Acrylic on canvas  
50 x 50 cm  
£450 +GST



**Budding, 2024**  
Acrylic on canvas  
61 x 75cm  
£1000 +GST



**Radiant Energy , 2023**  
Acrylic on canvas  
150 x 120cm  
£2000 +GST



**Cosmos, 2023**  
Acrylic on canvas  
150 x 120cm  
£2000 +GST



**Verdant, 2024**  
Acrylic on board  
84 x 61cm  
£750 +GST



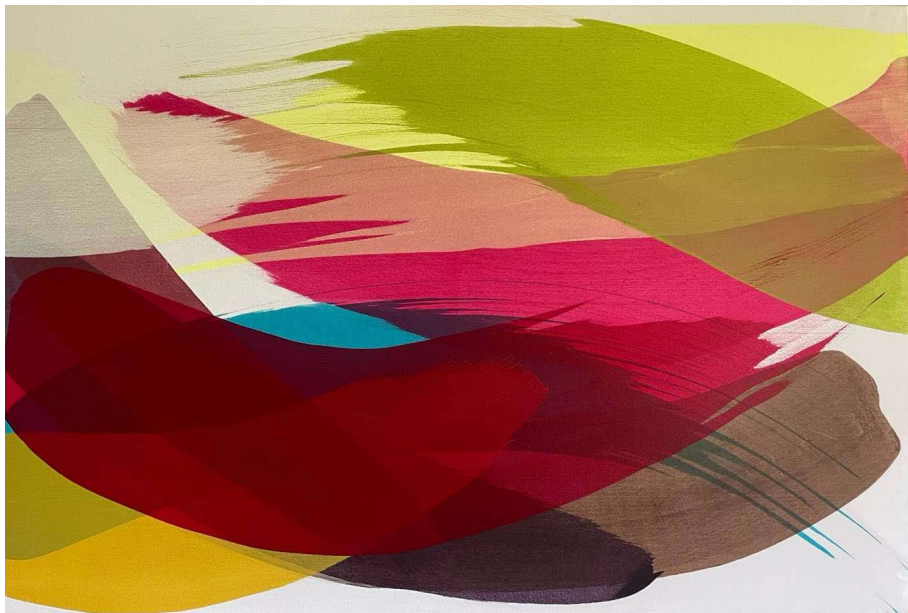
**Embryo, 2024**  
Acrylic on canvas  
76 x 101cm  
£1100 +GST



**Wipe Out, 2024**  
Acrylic on canvas  
101 x 76cm  
£1000 +GST

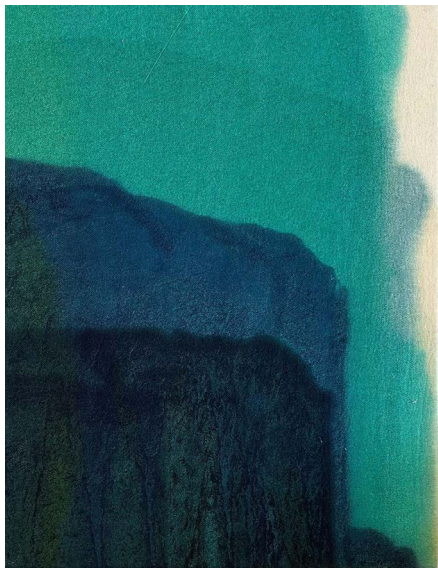


Wipeout 2, 2024  
Acrylic on canvas  
270cm x 213cm  
£4000 +GST

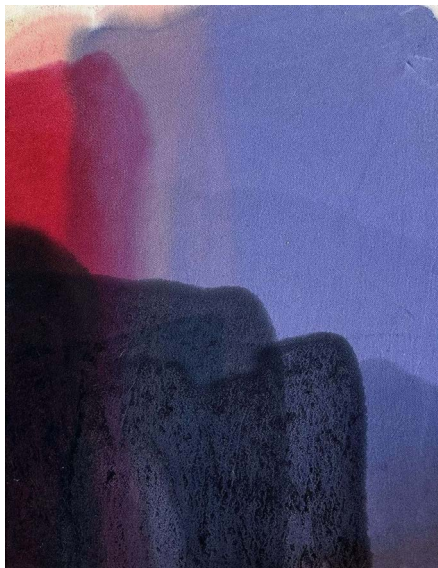


**Back And Forth, 2023**  
Acrylic on canvas  
150 x 100cm  
£2500 +GST





Calm , 2024  
Acrylic on canvas  
36 x 46cm  
£450 +GST



New Hope, 2024  
Acrylic on canvas  
36 x 46cm  
£450 +GST



Passing by, 2023  
Acrylic on canvas  
120 x 100cm  
£1600 +GST



Arora, 2024  
Acrylic on canvas  
120 x 101cm  
£1600 +GST

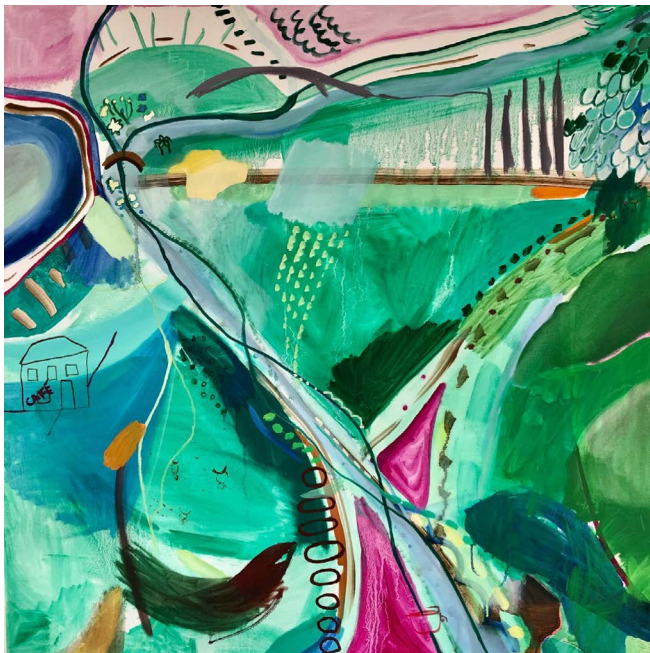
# Francesca Warner

Francesca paints as a form of creative expression, language and healing. Colour, rhythm and movement play important roles in her work as she strives to depict the beauty of both nature and life in its various cycles. There is an immediacy evident in her work which is aiming to capture the essence of a place or memory, a journey or experience. The transient quality of life, as well as the eternal.

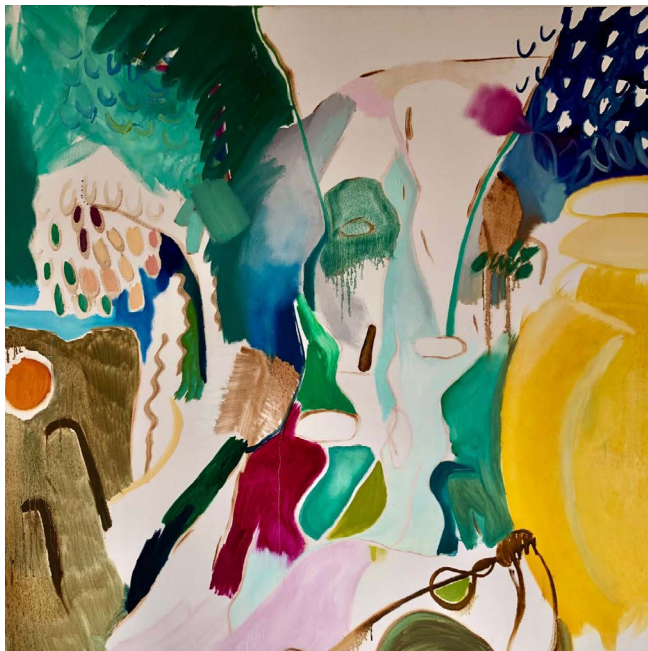
Francesca has painted from a young age, although she is not a formerly trained painter. In some ways this has enabled her to remain naïve and free in her technique as she is constantly learning, each painting teaches her something new. She specialised in ceramics at Foundation level at Wimbledon College of Arts. She also received a BScHons in Social Anthropology at Manchester University.

Along with painting and art, Francesca has a deep fascination in the healing arts and works as a complementary health practitioner. She graduated as a craniosacral therapist in 2009 and more recently as a shamanic homeopath and astrologer. COSMOS, the show's title, is very apt in her field of work and research. She is currently training in herbal medicine and painting in her studio in Jersey.





Green (with Magenta), 2022  
Oil on canvas  
101.5 x 101.5cm  
£1200 +GST

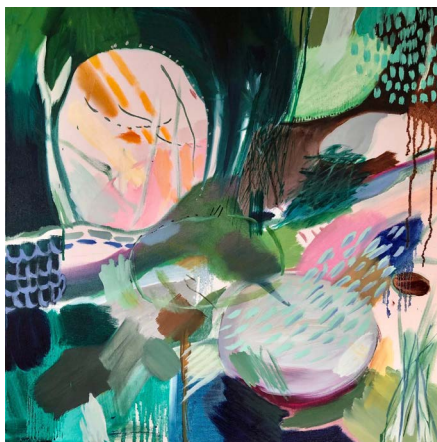


Way of St James, 2019  
Oil on canvas  
101.5 x 101.5cm  
£1200 +GST



Winter, 2024  
Oil on canvas  
39.5 x 49.5cm  
£400 +GST

Albanian Woodland, 2024  
Oil on canvas  
61 x 61cm  
£750 +GST

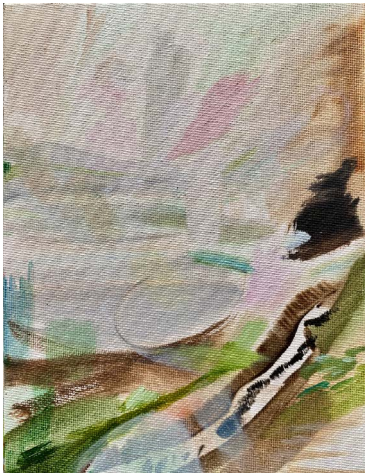






Camino de Santiago de Compostela, 2020  
Oil on canvas  
101.5 x 101.5cm  
£1200 +GST

**Sea Mist Lifting, 2024**  
Oil on canvas board  
12.7 x 17.8cm  
£250 +GST

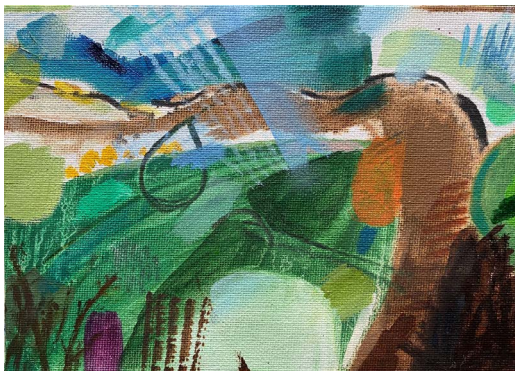


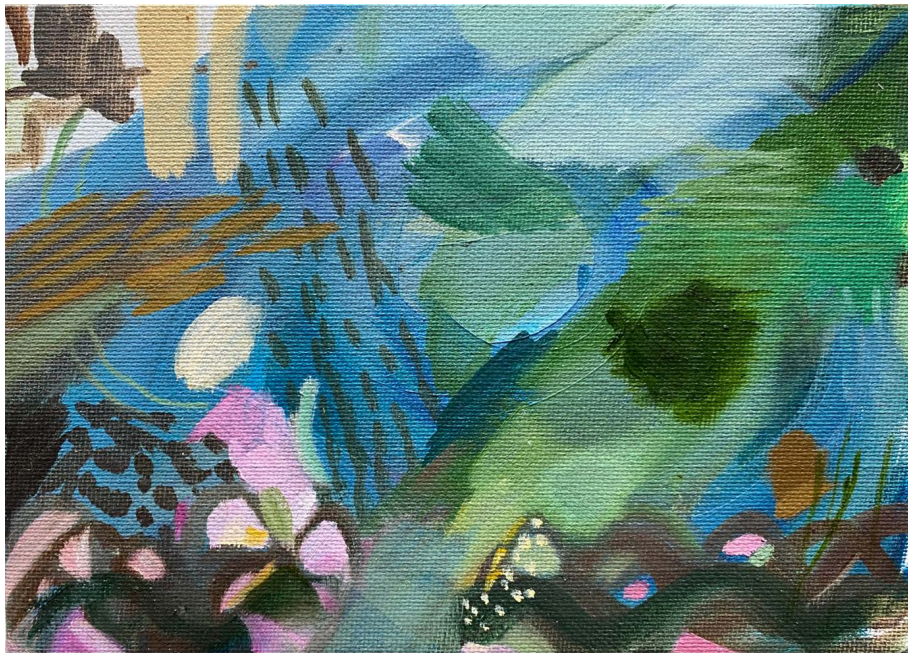
**Sea Mist, 2024**  
Oil on canvas board  
17.8 x 12.7cm  
£250+GST

Walk Round the Block, 2024  
Oil on canvas board  
12.7 x 17.8cm  
£250 +GST

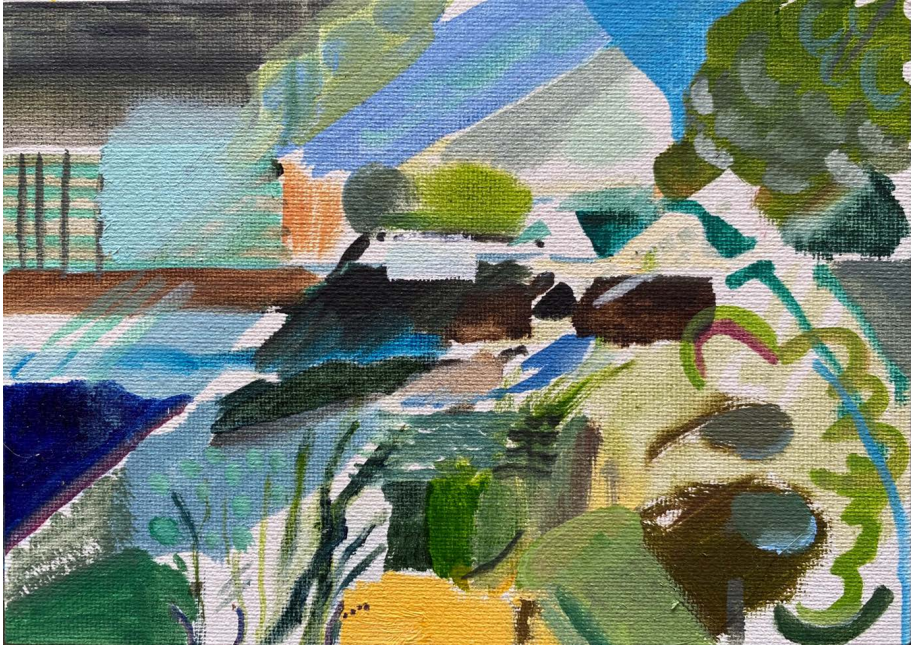


Coast, 2024  
Oil on canvas board  
12.7 x 17.8cm  
£250 +GST





**Seascape, 2024**  
Oil on canvas board  
12.7 x 17.8cm  
£250 +GST



Across the Bay, 2024  
Oil on canvas board  
12.7 x 17.8cm  
£250 +GST

# Rups Stewart

Rups is a British artist investigating coast: marine life, tides, rock and weather. Two-dimensional and three-dimensional responses examine ecology and the natural world. Materials chosen echo landscape and form contrasting with vibrant colour choices taken from an 80's surf culture.

Rups graduated in 2020 with a (First Class) BA Hons in Fine Art at UCA Farnham. She was awarded the Elfrieda Windsor Scholarship to study an MA in which she gained a First. She has exhibited widely in London, Jersey, Middlesborough, Ireland and Surrey.

*"Perhaps Everything that is  
terrifying is deep down a helpless  
thing that needs our help."*

Letters to a Young Poet, Rainer Maria Rilke





Octopus  
Sandcast Bronze  
93cm x 75cm x 27cm (h)  
£6950 +GST





Giant Squid  
Sandcast Bronze  
90cm x 90cm x 45cm (h)  
£6900 +GST



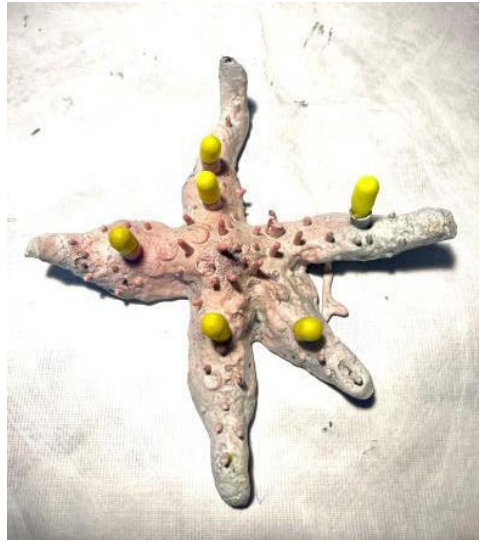
Urchin (Pink Droplet)  
Sandcast Bronze  
26cm x 26cm x 22cm (h)  
£1200 +GST

The critter series examines the symbiotic relationship of animals in the ocean (such as the cleaner shrimp). The critter's strength lies in their co-dependence and mutual supportive. Their spines project aggression, but this is only to overcome their fear and anxiety and to protect their peaceful, gentle hearts.



**Blow Hole Critter**  
**Sandcast Bronze**  
**15cm x 20cm x 27cm (h)**  
**£1500 +GST**

Starfish  
Sandcast bronze, car paint  
and yellow ear plugs  
20 x 20 x 6cm (h)  
£600 +GST



Club-Foot Critter  
Sandcast Bronze  
23cm x 19cm x 30cm (h)  
£1900 +GST



**Le Braye Rock Cast on Skittery Legs**  
**Sandcast Bronze with Silicone**  
66cm x 16cm x 20cm (h)  
£2000 +GST





**Jelly Fish 1 (pink)**  
Sand cast bronze with car spray paint  
100 (h) x 60 x 20cm  
£3200 +GST

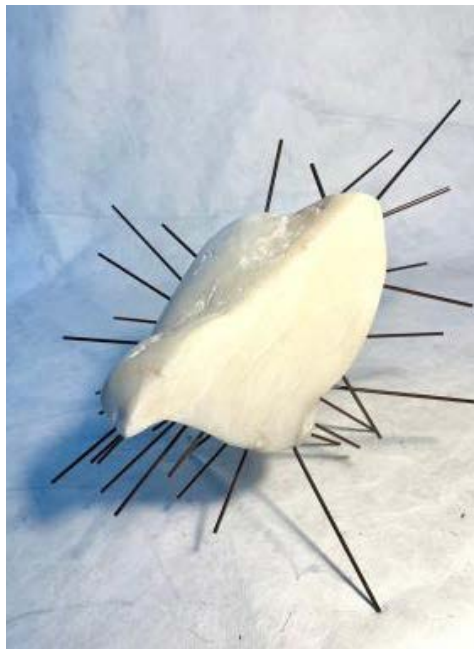


**Jelly Fish 2 (green)**  
Sandcast bronze with copper nitrate patina  
100 (h) x 70 x 20cm  
£3200 +GST



Sea Spider  
Sand cast bronze, bristle brush, car spray paint  
20 x 20 x 27cm  
£600 +GST





**Urchin I**  
**Polished Alabaster and Copper Rod**  
**45 x 45 x 50cm**  
**£1200 +GST**



**Portlet I**  
**Bronze Rock Pool Cast**  
**50 x 40 x 15 (h) cm**  
**£2000 +GST**



**Portlet II (curved)**  
**Rock Pool Glass Cast**  
**on Polished Copper and Oak**  
**40 x 40 x 60 (h) cm**  
**£2000 +GST**



Contact Chris Clifford:  
+44(0) 77977 14186 | [chris@privateandpublic.com](mailto:chris@privateandpublic.com)  
[www.privateandpublic.com](http://www.privateandpublic.com)