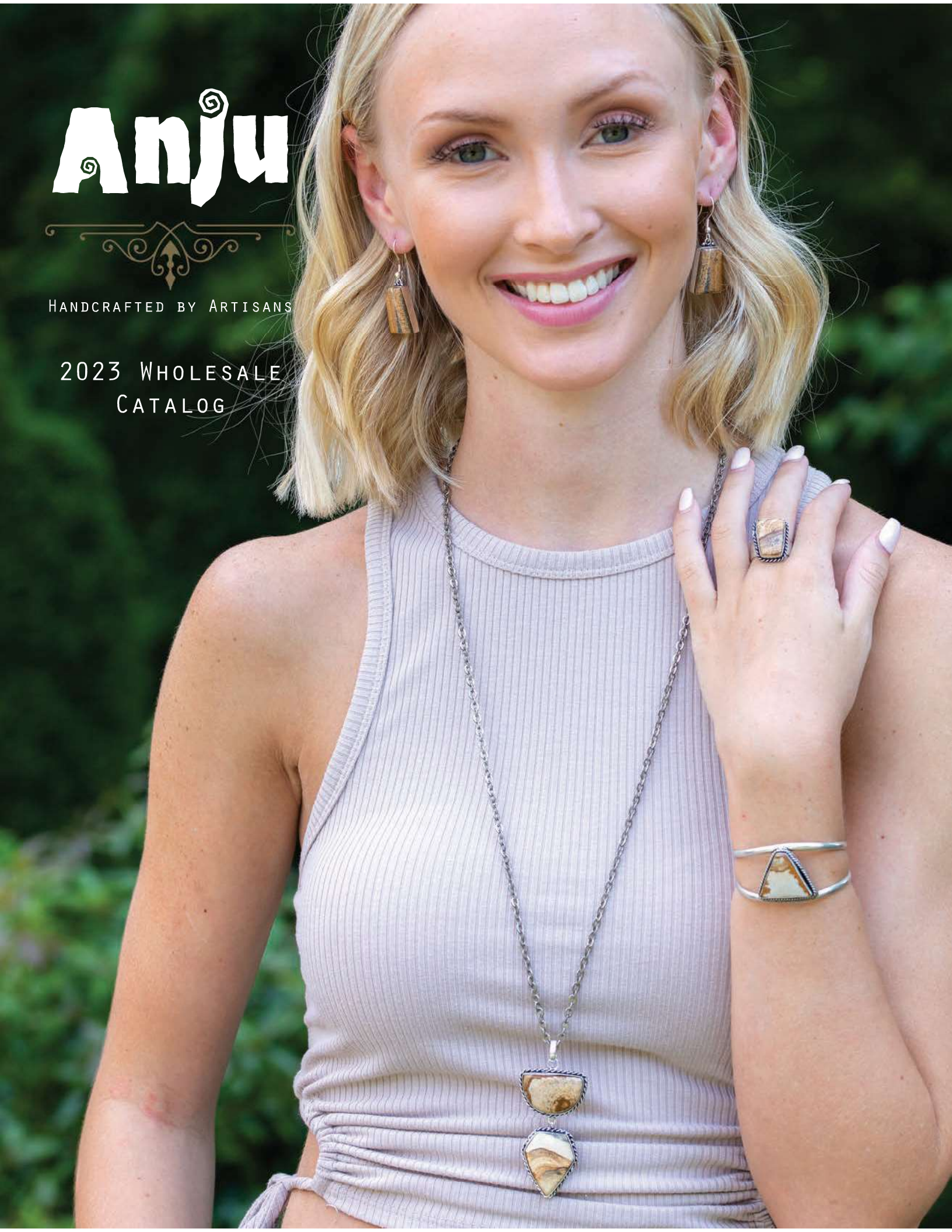


Anju



HANDCRAFTED BY ARTISANS

2023 WHOLESALE
CATALOG





About Anju

The roots of Anju Jewelry began when India natives Anju & Gaurav decided to invest in their future and move to America. While Gaurav spent his days working on his Ph.D., Anju began designing and making jewelry to sell at local craft fairs. As business increased, Gaurav decided to join Anju and help her meet the demand for her unique handcrafted pieces. A few years later, on a trip back home to India, they met a talented, but struggling group of artisans that could not keep consistent work. It was then, that Anju & Gaurav decided to partner with this artisan group and move manufacturing to India where they knew they could provide them with consistent work. More than a decade later, they are still working with the same artisan group. Through this partnership over the years they have made significant contributions to improve the quality of life of these artisans and their families. More recently, Anju & Gaurav have found other groups to partner with and continue to look for more artisan communities to keep their designs fresh while providing work to those in need of steady jobs. Anju Jewelry has provided a sustainable source of livelihood for these artisan families and continues to make a positive difference in their life.

About Our Jewelry

We stand behind the quality of our jewelry which is why all our jewelry is:

- Individually Handcrafted
- Cadmium and Lead Free
- Lacquered for protection against tarnish

Pricing and Ordering Info

- \$150 Opening order minimum
- \$ 0 Reorder minimum
- 2-6 Per style minimum order quantity unless ordering an assortment
- Online retailers may not sell our products for less than 2X markup.

Billing Info

- All orders must be prepaid.
- We accept all major credit cards, or checks
- Net 30 billing is available for very limited approved customers

Returns & Exchanges

- Returns & Exchanges of unopened merchandise must be made within 14 days of purchase.
- There will be a 15% restocking fee on returns on opened merchandise
- Exchanges or credit will be given for defective merchandise

How to Place Your Order

- Phone: 404.221.0707
- Email: orders@anjujewelry.com
- Website: www.anjujewelry.com
- Fax: 404.551.5240
- Your local rep, complete rep list is on the back cover of this catalog
- Trade Shows, please check our website to find out where we will be
- Come visit us in our showroom at AmericasMart in Atlanta

Open Monday-Friday, 9am-5pm
75 John Portman Blvd NW, Suite 7E108
Atlanta, GA 30303

TABLE OF CONTENTS

OMALA COLLECTION.....	4
AASHA (SARI BEADS).....	22
SACHI COLLECTION.....	32
BANJARA COLLECTION.....	56
SILVER/GOLD PLATED JEWELRY.....	70
PATINA COLLECTION.....	92
JANYA MIXED METALS JEWELRY.....	101
KASHI WITH NATURAL STONES.....	112
TANVI COLLECTION.....	119
ENGRAVED AND ETCHED JEWELRY.....	130
PEWTER COLLECTION.....	134
HOME STATE JEWELRY.....	152
ZODIAC JEWELRY.....	158
AADI MEN'S JEWELRY.....	160
CHIPPA COTTON SCARVES/BAGS.....	167
DISPLAYS.....	189
REUSABLE TOTE BAGS.....	195



WE LOVE OUR ARTISANS AND ARE COMMITTED TO THEIR WELL-BEING

Our mission at Anju is to create unique, hand-crafted products that blend traditional craftsmanship with modern trends. By collaborating with artisan communities we are able to provide economic opportunities for our artisans and their families in an environment that supports their cultural heritage and creative expression.

We have been able to create consistent work for our artisans, more job opportunities, and create an environment that not only helps to support their families but keeps them a priority. Many of our women artisans work from home or bring their kids to work. Many have been able to send their children to school that previously didn't have the opportunity. For many marginalized women this is an opportunity to have their own income and the freedom to spend it anyway they want.

As we continue to provide new opportunities for these artisans, they are able to preserve and share the traditional techniques and craftsmanship that have been passed down from generations. Without support many of these beautiful crafts would die out and eventually be lost completely. Your purchase helps us support these artisans earn a respectable livelihood and make a meaningful impact on the quality of their life.





Omala Collection

*Natural Horn and Bone Jewelry
Sustainable and up-cycled with care*

The word Omala means "Earth" in Hindi

The Omala Collection is made using up-cycled cattle horn and bones. In India cows are sacred. They are treated with incredible respect. The horn used in our jewelry is collected only after the natural passing of these highly regarded animals, creating unique statement pieces with a natural and ethical twist. The porous texture of gently polished horn allows the dyes to be easily absorbed, resulting in brilliantly colorful and extremely light-weight jewelry.

This collection is made by artisans from a small village named Sambalpur in the Northeastern part of India.

Omala Collection

Handcrafted with natural animal horn.
Sustainable and upcycled with care.

Autumn Neutrals



N1721 \$16
34" long
6 12608 51154 5



N1712 \$18
30" long
6 12608 50735 7



N1710 \$16
30" + 3" long
6 12608 50733 3



N1711 \$16
24" + 2" long
6 12608 50734 0



N1722 \$18
27" + 3" long
6 12608 51155 2



N1702 \$16
32" long
6 12608 50725 8



N1709 \$16
32" + 3" long
6 12608 50732 6



N1703 \$16
30" long
6 12608 50726 5



N1701 \$18
27" + 3" long
6 12608 50724 1



N1708 \$18
28" + 3" long
6 12608 50731 9



N1704 \$16
22" + 3" long
6 12608 50727 2



Omala Collection

Handcrafted with natural animal horn.
Sustainable and upcycled with care.

Heliotrope



N1761A \$18
36" long



N1762A \$16
38" long



N1764A \$16
20" + 18" + 3" long



N1769A \$12
18" + 2" long



N1704A \$16
22" + 2" long



N1772A \$14
30" long



N1771A \$18
30" long



N1773A \$16
40" long



E1703A \$8
1" x 2.5"



E1723A \$5
1.25" x 1.25"



E1761A \$8
1.25" x 3.5"



E1762A \$7
0.6" x 2.75"



E1763A \$5
1.25" x 1.75"



E1764A \$7
1.25" x 3.5"



E1764A2 \$7
1.25" x 3.5"



E1769A \$7
1" x 2.75"



E1772A \$5
1.25" x 1.50"



E1773A \$6
0.5" x 1.75"



Omala Collection

Handcrafted with natural animal horn.
Sustainable and upcycled with care.

Natural Beige



N1719 \$16
32" long



N1723 \$16
32" long



N1770B \$14
20" + 3" long



N1761B \$18
36" long



N1766B \$18
34" long



Omala Collection

Handcrafted with natural animal horn.
Sustainable and upcycled with care.

Natural Beige



N1772B \$14
30" long
6 12608 51637 3



N1718 \$16
25" long
6 12608 51151 4



N1775B \$14
28" long
6 12608 51639 7



E1705 \$8
1" x 2.5"
6 12608 50740 1



E1710 \$7
1.25" x 2.5"
6 12608 50745 6



E1712 \$7
0.75" x 3"
6 12608 50747 2



E1723 \$5
1.25" x 1.25"
6 12608 51167 5



E1713 \$8
1.25 x 2.75"
6 12608 50748 7



E1727 \$5
0.75" x 1.25"
6 12608 51171 2



E1761B2 \$6
1.25" x 2.5"
6 12608 51580 2



E1761B \$8
1.25" x 3.5"
6 12608 51425 6

Omala Collection

Handcrafted with natural animal horn.
Sustainable and upcycled with care.

Azure Coast



N1761D \$18
36" long



N1705D \$14
35" long



N1769D \$12
18" + 3" long



N1765D \$24
20" + 3" long



N1764D \$16
20" + 2" long



Omala Collection

Handcrafted with natural animal horn.
Sustainable and upcycled with care.

Azure Coast



N1772D \$14
30" long



N1771D \$18
30" long



N1711D \$16
22" +2 "long



E1703D \$8
1" x 2.5"



E1732D \$7
1.25" x 3"



E1734D \$5
1" x 1.5"



E1761D2 \$5
1.25" x 2.5"



E1763D2 \$7
1" x 2.5"



E1764D2 \$7
1" x 3.25"



E1765D \$7
0.5" x 2.75"



E1768D \$7
1" x 2.75"



E1772D \$5
1.5" x 1.25"

Omala Collection

Handcrafted with natural animal horn.
Sustainable and upcycled with care.

Misty Greens



N1705E \$14
35" long



N1778E \$18
52" long



N1765E \$24
20" + 3" long



N1769E \$12
18" + 2" long




N1704E \$16
22" + 2" long






N1764E \$16
20" + 3" long




N1760E \$18
30" long




N1771E \$18
30" long





E1703E \$8
1" x 2.5"




E1723E \$5
1.25" x 1.25"




E1760E2 \$6
1.75" x 2.75"




E1764E \$7
1" x 3"




E1766E \$6
0.75" x 2"




E1763E2 \$5
1" x 2.75"




E1771E \$7
1.25" x 3"




E1778E \$7
0.5" x 3"


Omala Collection

Handcrafted with natural animal horn.
Sustainable and upcycled with care.

Pleasing Pastels



N1727 \$18
32" long



N1760F \$18
30" long



N1763F \$22
24" + 3" long



N1704F \$16
22" + 3" long

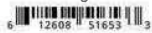


N1769F \$12
18" + 2" long





N1772F \$14
30" long



N1775F \$14
28" long



N1762F \$16
38" long



E1760F \$6
1.25" x 2.75"



E1762F \$7
0.75" x 2.75"



E1763F \$7
1" x 3"



E1723F \$5
1.25" x 1.25"



E1763F2 \$7
1" x 3"



E1704F \$8
1" x 2.5"



E1760F2 \$6
1.25" x 2.75"



E1773F \$6
0.5" x 1.75"



Omala Collection

Handcrafted with natural animal horn.
Sustainable and upcycled with care.

Modern Monochrome



N1780W \$18
38" long



N1782W \$14
38" long



N1781W \$16
26" + 3" long



N1779W \$18
18" + 3" long



N1786W \$14
20" + 3" long





N1783W \$18
36" long



N1784W \$14
34" long



N1785W \$18
34" long



E1779W \$6
1" x 2"



E1780W \$7
1" x 2.25"



E1781W \$7
1" x 2.75"



E1782W \$7
0.75" x 3"



E1783W \$7
0.75" x 2.75"



E1784W \$7
1" x 3"



E1785W \$5
1" x 2.25"



E1786W \$6
0.5" x 2.5"

Omala Collection

Handcrafted with natural animal horn. Sustainable and upcycled with care.



B1751 \$7
6 12608 51179 8



B1752 \$7
6 12608 51180 4



B1752D \$7
6 12608 52555 9



B1753D \$7
6 12608 52554 2



B1753K \$7
6 12608 51850 6



B1754 \$7
6 12608 51182 8



B1754G \$7
6 12608 51842 1



B1770A \$7
6 12608 51846 9



B1770E \$7
6 12608 52552 8



B1772F \$7
6 12608 52553 5



B1773W \$7
6 12608 52559 7



B1774G \$7
6 12608 52561 0



B1755W \$7 6 12608 52558 0



B1755D \$7 6 12608 51845 2



B1756 \$7 6 12608 51184 2



B1756G \$7 6 12608 52557 3



B1757 \$7 6 12608 51185 9



B1757A \$7 6 12608 52555 6



B1758 \$7 6 12608 51186 6



B1758F \$7 6 12608 52560 3



B1758E \$7 6 12608 51844 5



B1759 \$7 6 12608 51187 3



B1762F \$7 6 12608 51841 4



B1771B \$7 6 12608 52551 1

Omala Collection

Handcrafted with natural animal horn. Sustainable and upcycled with care.



Prepacks



OME36 (with display) \$273
includes 36 best selling earrings (9- \$5, 9- \$6, 9- \$7, 9- \$8) and a wooden spinner display DW44 (\$39)



OME36R (without display) \$234
includes 36 best selling earrings (9- \$5, 9- \$6, 9- \$7, 9- \$8)



OMNB12D (with display)- \$311
12 Omala best-selling necklaces (4 -\$14, 4-\$16, 4-\$18) and 12 bracelets (\$7each) with display (DTB18-4 \$35)



OMNB12 (no display) \$276
12 Omala best-selling necklaces (4 -\$14, 4-\$16, 4-\$18) and 12 bracelets (\$7each)



OMN8 (with display) \$153
includes 8 best-selling necklaces (2-\$14, 4-\$16, 2-\$18) and T-bar display DM1 (\$25)



OMN8R (no display) \$128
includes 8 necklaces (2-\$14, 4-\$16, 2-\$18)



OME24 (with display)- \$189
includes 24 best selling earrings (4- \$5, 6- \$6, 8- \$7, 6- \$8) and a wooden display DW-13 (\$29)



OME24R (without display) \$160
includes 24 earrings (4- \$5, 6- \$6, 8- \$7, 6- \$8)



OMB6-L \$47
includes 6 link bracelets (\$7 each) and a long burlap cushion (\$5)



OMB6-S \$47
includes 6 stretch bracelets (\$7 each) and a long burlap cushion (\$5)





Aasha

Recycled Sari Jewelry

Providing Hope through Fair-Trade

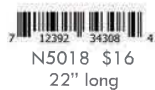
Anju is proud to feature "Aasha", a collection of jewelry with a mission of creating sustainable employment for an artisan group of economically disadvantaged women from villages just outside of Delhi, India. Working with a Fair-Trade Certified partner, we are able to contribute towards schooling for artisan's children, health care, and ongoing education and support. Otherwise unemployable, this job allows them to not only make financial contributions to their family, but gives them pride in knowing that they are able to create something beautiful.

Made with completely recycled materials, Aasha is a 100% sustainable jewelry line. Using discarded saris, and wrapping them over small wooden beads, these women are able to create a very unique and colorful collection of jewelry. The wooden beads are scraps sourced from furniture factories nearby, and the fabric used to cover them comes from old, worn saris, collected all over India! No two beads will be the same, meaning every single piece of jewelry is uniquely different!

The word "Aasha" means Hope in Hindi. That's exactly what we aspire to accomplish with our Aasha Collection. Provide hope, sustenance and opportunity for our artisans.



Aasha Necklaces (The fabric colors will vary) minimum order 2 each



Aasha Necklaces (The fabric colors will vary) minimum order 2 each



12392 34523 1
N5028 \$12
16" long



12392 34525 5
N5030 \$16
18"-26" long



12392 34527 9
N5032 \$16
16"-22" long



12392 34528 6
N5033 \$12
24" long



12392 34529 3
N5034 \$12
18" long



12392 30954 7
N5035 \$14
22" long



12392 30955 4
N5036 \$12
30" long



12392 30956 1
N5037 \$12
20" long



Aasha Necklaces (The fabric colors will vary) minimum order 2 each



N5038 \$18
28" long



N5039 \$16
28" long



N5040 \$18
28" long



N5042 \$12
18" long



N5043 \$12
18" long



N5046 \$12
30" long



N5048 \$12
30" long



N5049 \$12
30" long



Aasha Necklaces (The fabric colors will vary) minimum order 2 each



N5052 \$16
30" long



N5053 \$22
23" long



N5054 \$24
27" long



N5055 \$24
22" long



N5056 \$24
24" long



N5057 \$18
20" long



N5058 \$18
18" long



N5059 \$16
24" long



Aasha Necklaces (The fabric colors will vary) minimum order 2 each



6 12608 51539 4
N5061 \$16
22" long



6 12608 51608 7
N5062 \$16
24" long



6 12608 53393 6
N5063 \$18
22"



6 12608 53394 3
N5064 \$16
26" long



6 12608 53395 0
N5065 \$16
21" long



6 12608 53396 7
N5066 \$24
22" long



6 12608 53397 4
N5067 \$12
16" long



6 12608 53398 1
N5068 \$18
20" long



Aasha Earrings (fabric colors will vary) min. order 2 each



Aasha Earrings (fabric colors will vary) min. order 2 each

E5061 \$8
1" x 1.5"



E5064 \$8
1.5" x 2.5"



E5065 \$8
1" x 1.75"



E5067 \$8
1" x 1.25"



E5068 \$8
1" x 1.75"



E5069 \$8
0.5" x 2.25"



E5070 \$8
1.75" x 1.25"



E5071 \$8
1.125" x 0.5"



E5072 \$8
1.25" x 0.75"



E5073 \$8
1" x 1.25"



E5074 \$8
1.5" x 0.5"



E5075 \$8
0.5" x 2.25"



E5076 \$8
0.6" x 2"



E5077 \$8
0.75" x 1.25"



E5078 \$8
0.4" x 2.25"



E5079 \$8
0.75" x 2"



E5080 \$8
0.3" x 1.25"



E5081 \$8
0.75" x 2"



E5082 \$8
1.2" x 1.75"



E5083 \$8
2" x 2"



E5084 \$8
1.25" x 2.25"



E5085 \$8
1.25" x 2.25"



E5086 \$8
1.5" x 1.75"



E5087 \$8
1" x 1.25"



Aasha Earrings (fabric colors will vary) min. order 2 each

E5088 \$8
1.5" x 2.25"



E5089 \$8
1.25" x 1.25"



E5090 \$8
2.75" x 2.75"



E5091 \$8
0.5" x 2.25"



Aasha Bracelets (The fabric colors will vary) minimum order 2 each



B5001 \$12



B5004 \$12



B5005 \$12



B5007 \$12



B5008 \$12



B5009 \$12



B5011 \$12



B5012 \$12



B5013 \$12



B5015 \$12



B5016 \$12



B5017 \$12



B5401 \$9



B5402 \$9



B5403 \$9



B5404 \$9



B5405 \$9



B5406 \$9



B5407 \$9



B5408 \$9

Aasha Bracelets (The fabric colors will vary) minimum order 2 each



B5201 \$6
6 12608 51700 4



B5202 \$6
6 12608 51701 1



B5203 \$6
6 12608 51702 8



B5204 \$6
6 12608 51703 5



B5205 \$6
6 12608 51704 2



B5206 \$6
6 12608 51705 9



B5207 \$6
6 12608 51706 6



B5208 \$6
6 12608 51707 3

Aasha Prepacks



Necklaces (with display)
AN12D \$190
12 Necklaces (4 for \$12, 4 for \$14, 4 for 16) with tall T-bar display DTB18 (\$22)



Necklaces, (no display)
AN12 \$168
12 necklaces (4 for \$12, 4 for \$14, 4 for 16)



Stacking Bracelets Prepack AB8 \$53
8 stretch bracelets (\$6 each) with cushion display (\$5)



AB16D \$135 (with display)
16 Aasha bracelets (8 for \$6 each, 8 for \$9 each), with DTB4 display (\$15)



AB16 \$120 (no display)
16 Aasha bracelets (8 for \$6 each, 8 for \$9 each)



Earrings prepack (with display) AE12D \$106
12 earrings (\$8 each) with slotted wooden display DW27



Earrings prepack (no display) AE12 \$96
12 earrings (\$8 each)



Earrings prepack (with display) AE24D \$221
24 Aasha earrings (\$8 each) with a wooden display DW13 (\$29)



Earrings prepack (no display) AE24 \$192
24 earrings (\$8 each)



AB12 \$180 (with display)
12 Bracelets (\$12) with display (\$36)



AB12R \$144 (no display)
12 Bracelets (\$12)





Sachi Collection

The Sachi Collection is an assortment of contemporary and youthful jewelry. The components of this jewelry are mixed materials such as cotton, satin and wool threads, wood beads, glass seed beads, sea-shells, etc. Using this variety of materials, our artisans are able to create mini-collections of jewelry that are unique while following contemporary trends and colors.

The jewelry is made by artisans on the outskirts of New Delhi.



N6131 \$11
23" + 2" extender



N6132 \$10
24" + 2" extender



N6133 \$8
31" + 2" extender



N6134 \$8
22" + 2" extender



E6131 \$5
1" x 2.75"



E6132 \$5
1" x 2.75"



E6133 \$5
1" x 2.75"



E6134 \$5
1" x 2.75"



B6131 \$6
7" + 1" extender



B6132 \$6
7" + 1" extender



B6133 \$7
7" + 1" extender



N6141 \$12
28" long



N6142 \$9
20" + 2" extender



N6143 \$7
16" + 2" extender



N6144 \$8
22" + 2" extender



N6145 \$10
28" + 2" extender



N6146 \$10
22" + 2" extender



Bracelets



B6141 \$6
7" + 1" extender



B6142 \$6
7" + 1" extender



B6143 \$6
7" + 1" extender



B6144 \$6
7.25" + 1" extender

Earrings



E6141 \$5
2.25" x 0.5"



E6142 \$5
1.5" x 0.75"



E6143 \$5
3" x 0.5"



E6144 \$5
3" x 0.5"





N6151 \$12
20" + 2" extender



N6152 \$12
24" + 2" extender



N6153 \$9
18" + 2" extender



N6154 \$9
22" + 2" extender



N6155 \$12
26" + 2" extender



N6156 \$12
22" + 2" extender





Bracelets



B6151 \$8
7" + 1" extender
6 12608 52266 4



B6152 \$7
7" + 1" extender
6 12608 52267 1



B6153 \$8
7" + 1" extender
6 12608 52268 8



B6154 \$7
7" + 1" extender
6 12608 52269 5

Earrings



E6151 \$6
1" x 2.75"
6 12608 52260 2



E6152 \$6
1" x 2.75"
6 12608 52261 9



E6153 \$8
1.25" x 3.25"
6 12608 52262 6



E6154 \$8
1.25" x 3.25"
6 12608 52263 3



E6155 \$6
1" x 2.75"
6 12608 52264 0



E6156 \$6
1" x 2.75"
6 12608 52265 7



N6161 \$12
18" + 2" extender



N6162 \$10
17"-22" + 2" extender



N6163 \$11
16"-22" + 2" extender



N6164 \$12
18"-22" + 2" extender





Bracelets



B6161 \$7
7" +1" extender



B6162 \$7
7" +1" extender

Ankle Bracelets



A6161 \$6
7" +1" extender

Earrings



E6161 \$5
0.5" x 1"



E6162 \$6
0.5" x 1.5"



E6163 \$6
0.5" x 1"



A6162 \$7
7" +1" extender



A6163 \$7
7" +1" extender



N6171 \$12
32" + 2" extender



N6172 \$10
24" + 2" extender



N6173 \$10
20" + 2" extender



N6174 \$10
20" + 2" extender



N6175 \$10
18" + 2" extender



N6176 \$10
Pull-tie adjustable





Bracelets



B6171 \$7
stretch



B6172 \$7
stretch



B6173 \$7
7.5" +1" extender



B6174 \$7
7.5" +1" extender



Earrings



E6171 \$6
2.25" x 0.75"



E6172 \$6
2.25" x 0.75"



E6173 \$6
1.5" x 0.5"



E6174 \$6
2" x 1.25"



E6175 \$6
2.5" x 0.75"



E6176 \$6
1.5" x 0.75"





N6181 \$12
34" + 2" extender



N6182 \$12
24" + 2" extender



N6183 \$10
26" + 2" extender



N6184 \$10
24" + 2" extender



N6185 \$9
17" + 2" extender



N6186 \$10
20" + 2" extender
3.5" Tassel drop





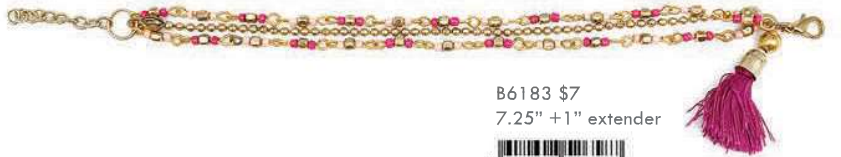
Bracelets



B6181 \$7
7" + 1" extender



B6182 \$7
7" + 1" extender



B6183 \$7
7.25" + 1" extender



B6184 \$7
7.25" + 1" extender

Earrings



E6181 \$6
1.5" x 0.75"



E6182 \$6
1.75" x 0.75"



E6183 \$6
2" x 0.5"



E6184 \$6
2" x 0.5"



N6191 \$12
32" + 2" extender



N6192 \$12
28" + 2" extender



N6193 \$12
23" + 2" extender
4" Tassel drop



N6194 \$12
28" + 2" extender



N6195 \$10
25" + 2" extender



N6196 \$12
24" + 2" extender
4" Tassel drop



Bracelets



B6191 \$7
7" + 1" extender
0 612608 526723



B6192 \$7
7" + 1" extender
0 612608 526730



B6193 \$7
7" + 1" extender
0 612608 526747



B6194 \$7
7" + 1" extender
0 612608 526754

Earrings



E6191 \$7
2" x 0.75"
0 612608 526662



E6192 \$6
2" x 0.75"
0 612608 526679



E6193 \$7
1.5" x 1.25"
0 612608 526686



E6194 \$6
1" x 1.75"
0 612608 526693



E6195 \$7
2" x 1"
0 612608 526709



E6196 \$7
2" x 1"
0 612608 526716

(minimum order 2 each)



N6201 \$12
24" + 2" exten



N6202 \$12
24" + 2" extende



N6203 \$12
24" + 2" extender



N6204 \$12
24" + 2" extender



(minimum order 2 each)



N6205 \$10
17" + 2" extender
6 12608 52680 8



N6206 \$10
17" + 2" extender
6 12608 52681 5



N6207 \$10
17" + 2" extender
6 12608 52682 2



N6208 \$10
17" + 2" extender
6 12608 52683 9



N6209A \$12
22" + 2" extender
6 12608 52684 6



N6209B \$10
17" + 2" extender
6 12608 52685 3

(minimum order 2 each)



B6201 \$7
6 12608 52691 4



B6202 \$7
6 12608 52692 1



B6203 \$7
6 12608 52693 8



B6204 \$7
6 12608 52694 5



B6201L \$12
6 12608 53092 8



B6202L \$12
6 12608 53093 5



B6203L \$12
6 12608 53094 2



B6204L \$12
6 12608 53095 9



B6205 \$7
6 12608 52695 2



B6206 \$7
6 12608 52696 9



B6207 \$7
6 12608 52697 6



B6208 \$7
6 12608 52698 3



B6209 \$8
6 12608 52699 0



E6209 \$6
1.5" x 0.5"
6 12608 52690 7



E6201 \$6
1.5" x 1.5"
6 12608 52688 0



E6202 \$6
1.5" x 1.5"
6 12608 52687 7




E6203 \$6
1.5" x 1.5"
6 12608 52688 4



E6204 \$6
1.5" x 1.5"
6 12608 52689 1

(minimum order 2 each)




N6211 \$12
30" + 2" ext




N6212 \$12
31" + 2" extender




N6213 \$10
20" + 2" extender





N6214 \$10
17" + 2" extender




B6211 \$7
7" x 0.5"





B6212 \$7




B6214 \$7
7" x 0.5"




B6213 \$7




E6211 \$7
1" x 1.75"




E6212 \$6
1" x 1.5"




E6213 \$6
0.5" x 1"




E6214 \$6
1" x 1.5"


(minimum order 2 each)



N6221 \$14
20" + 2"
6 12608 52712 6



N6222 \$12
22" + 2"
6 12608 52713 3



N6223 \$12
18" + 2"
6 12608 52714 0



N6224 \$12
22" + 2"
6 12608 52715 7

(minimum order 2 each)



B6221 \$10
7" x 1"
6 12608 52718 8



B6224 \$8
6 12608 52721 8



B6222 \$8
7" x 0.75"
6 12608 52719 5



E6221 \$7
1.5" x 1.5"
6 12608 52716 4



B6223 \$8
7" x 0.75"
6 12608 52720 1



E6222 \$7
1.5" x 1.25"
6 12608 52717 1

Colorful wood-bead necklaces- 30" long, minimum order 2 each



Colorful wood-bead earrings- 0.5"x 2" min order 2 each



Sachi Collection *Contemporary and Youthful*

Chromatic Hues

Colorful wood-bead necklaces- 18" long, minimum order 2 each



N41-BLUE \$8



N41-CHAR \$8



N41-FUSC \$8



N41-GREEN \$8



N41-NATR \$8



N41-ORNG \$8



N41-PINK \$8



N41-PURP \$8



N41-SAGE \$8



N41-SEAG \$8



N41-TURQ \$8



N41-YEL \$8



Colorful wood-bead earrings- 1.5"x 1.5" min order 2 each



E61-BLUE \$6



E61-CHAR \$6



E61-FUSC \$6



E61-GREEN \$6



E61-NATR \$6



E61-ORNG \$6



E61-PINK \$6



E61-PURP \$6



E61-SAGE \$6



E61-SEAG \$6



E61-TURQ \$6



E61-YEL \$6





Prepack N61-12D
\$145
(Includes Display)
12 long necklaces (\$10 each) with metal T-bar display DM1 (\$25)



Prepack N41-12D
\$121
(Includes Display)
12 short necklaces (\$8 each) with metal T-bar display DM1 (\$25)



Prepack B41-12D
\$103
(Includes Display)
12 coil bracelets (\$7 each) with metal T-bar display DM2 (\$19)



Prepack B61-12D
\$103
(Includes Display)
12 stretch bracelets (\$7 each) with metal T-bar display DM2 (\$19)



Prepack E41-12D
\$82
(Includes Display)
12 drop earrings (\$6 each) with wooden slotted display DW27 (\$10)



Prepack E61-12D \$82
(Includes Display)
12 hoop earrings (\$6 each) with wooden slotted display DW27 (\$10)



Prepack E4161-24D
\$179
(Includes Display)
12 drop earrings and 12 hoop earrings (\$6 each) with wooden spinner display DW41 (\$35)





N6241 \$9
36" + 2" extender



N6242 \$14
26" + 2" extender
+8" drop



N6243 \$12
34" + 2" extender



N6244 \$12
22"-32" + 2" extender



N6245 \$12
19" + 2" extender



N6246 \$12
17" + 2" extender





B6241 \$6
stretch
6 12608 53555 8



B6242 \$6
stretch
6 12608 53556 5



B6243 \$6
stretch
6 12608 53557 2



B6244 \$6
stretch
6 12608 53558 9



B6245 \$6
7.5" + 1" extender
6 12608 53559 6



E6241 \$6
2.25" x 0.5"
6 12608 53547 3



E6242 \$6
2.25" x 0.5"
6 12608 53548 0



E6243 \$6
2.25" x 0.5"
6 12608 53549 7



E6244 \$6
2.25" x 0.5"
6 12608 53550 3



E6245 \$6
2" x 1.75"
6 12608 53551 0



E6246 \$6
2" x 1.75"
6 12608 53552 7



E6247 \$6
2" x 1.75"
6 12608 53553 4



E6248 \$6
2" x 1.75"
6 12608 53554 1

Banjara Collection

Artisan jewelry with a bohemian flair

The Banjara Collection represents true craftsmanship from artisans who have fabricated metal jewelry for generations. Every piece is individually handcrafted using brass and copper wire and sheet metal. Pieces are finished with an antique coating and laquered to prevent tarnish.

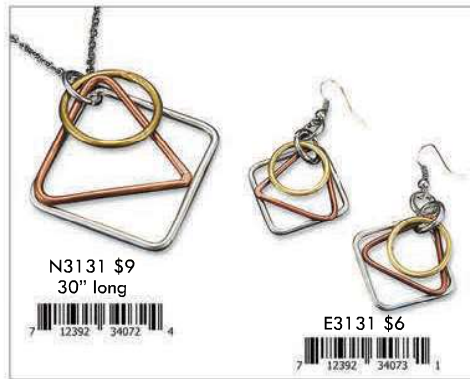


minimum order 2 each



Banjara Collection Artisan jewelry with a bohemian flair

minimum order 2 each



Banjara Collection Artisan jewelry with a bohemian flair

minimum order 2 each

Pendant 0.35" x 3.25"

Kambaba Jasper

N3202 \$12
30" Long

E3202 \$10
0.25" x 2.25"

Pendant 0.75" x 3.5"

Onyx

N3203 \$12
30" Long

E3203 \$10
0.25" x 1.25"

Pendant 1" x 2.75"

Agate

N3204 \$12
30" Long

E3204 \$10
0.75" x 1.5"

Pendant 2" x 2"

Jasper

N3205 \$12
30" Long

E3205 \$10
1" x 1"

Pendant 0.25" x 1.75"

Labradorite

N3206 \$12
30" Long

E3206 \$10
0.25" x 1.5"

Pendant 3"

Red Coral

N3207 \$12
30" Long

E3207 \$10
0.25" x 1.25"

Pendant 1.75" x 3"

Agate

N3210 \$12
30" long

E3210 \$10
1" x 2"

Pendant 2" x 2.75"

Lemon Chrysoprase

N3211 \$12
30" long

E3211 \$10
1" x 1"

Pendant 1.5" x 3"

Aventurine

N3215 \$12
30" long

E3215 \$10
0.5" x 1"

Pendant 1.25" x 2"

Aventurine

N3216 \$12
30" long

E3216 \$10
1" x 1"

Pendant 2" x 2.5"

Amethyst

N3226 \$12
30" long

E3226 \$10
1" x 1"

Pendant 2" x 2.5"

Jasper

N3227 \$12
30" long

E3227 \$10
1" x 1.75"

Banjara Collection Artisan jewelry with a bohemian flair

minimum order 2 each

Pendant 2.25" x 1.5"
E3228 \$10
0.75" x 1.25"
N3228 \$12
30" long
Labradorite

E3230 \$10
1" x 1"
N3230 \$12
30" long
Tigerseye

E3235 \$10
1" x 2"
N3235 \$12
30" long
Aventurine

E3239 \$10
0.5" x 1"
N3239 \$12
30" long
Labradorite

E3241 \$10
1" x 2"
N3241 \$12
20" long
Carnelian and sodalite

E3243 \$10
1.5" x 2.5"
N3243 \$12
30" long
Quartz

E3245 \$10
1" x 2.5"
N3245 \$12
30" long
Lapis

E3246 \$10
1" x 2.5"
N3246 \$12
30" long
Prehnite

E3247 \$10
1" x 2.5"
N3247 \$12
30" long
Amazonite

E3248 \$10
2.5" x 1"
N3248 \$12
30" long
Carnelian

E3249 \$10
2.75" x 1"
N3249 \$12
30" long
Kambaba Jasper

E3250 \$10
3" x 1"
N3250 \$12
30" long
Smoky Quartz

Banjara Collection Artisan jewelry with a bohemian flair

minimum order 2 each



Banjara Collection Artisan jewelry with a bohemian flair

E3525 \$10
 6 12608 52069 1

N3525 \$12
 30" long
 6 12608 52063 9

Prehnite

E3526 \$10
 6 12608 52070 7

N3526 \$12
 30" long
 6 12608 52064 6

Sardonyx

E3527 \$10
 6 12608 52071 4

N3527 \$12
 30" long
 6 12608 52065 3

Pink Agate

E3528 \$6
 6 12608 52072 1

N3528 \$12
 30" long
 6 12608 52066 0

Amethyst

E3529 \$6
 6 12608 52073 8

N3529 \$12
 30" long
 6 12608 52067 7

Aventurine

E3530 \$10
 6 12608 52074 5

N3530 \$12
 30" long
 6 12608 52068 4

Moss Agate

BN16 \$166
 16 Banjara Necklaces without stones (\$9 each) and T-bar display DW20 (\$22)

7 12392 33427 3

BN16S \$214
 16 Banjara Necklaces with semi-precious stones (\$12 each) and T-bar display DW20 (\$22)

7 12392 33428 0

Prepack BE32 \$227
 32 pairs of earrings without stones (\$6 each) and display DW41 (\$35). Two earrings free to offset display

6 12608 52035 6

Prepack BE32S \$355
 32 pairs of Banjara Earrings with semi-precious stones (\$10 each) and wooden spinner display DW41 (\$35). Two earrings free to offset display

7 12392 33850 9

Display only DWF-1 \$180

Floor Spinner

Earrings Prepack (BE256) \$2297
 256 Banjara earrings (half with stones (\$10 each), half w/o stones (\$6 each) and floor display (\$249)

7 12392 33644 5

Necklace and Earrings Prepack (FBNE) \$1777
 Panel-1 64 pair earrings (\$6 each)
 Panel-2 24 necklaces (\$9 each)
 Panel-3 64 pair earrings (\$10 each)
 Panel-4 24 necklaces (\$12 each)
 Wooden floor spinner \$249

6 12608 51312 9

Banjara Collection

Antiqued necklaces with semiprecious stones. Made with silver-plated brass, copper and brass. 30" long, minimum 2 each.



Banjara Collection

Antiqued earrings with semiprecious stones. Made with silver-plated brass, copper and brass. 3" long, minimum 2 each.



Amethyst
E3401 \$10



Labradorite
E3402 \$10



Onyx
E3403 \$10



Lapis
E3404 \$10



Camel Jasper
E3405 \$10



Tree Agate
E3406 \$10



Chalcedony
E3407 \$10



Tiger's Eye
E3408 \$8



Carnelian
E3409 \$10



Prehnite
E3410 \$10



Red Jasper
E3411 \$10



Yellow Aventurine
E3412 \$10



Prepack BN3401D
\$166 (with display)
12 Necklaces with semiprecious stones (\$12 each) and T-bar display DW20 (\$22)



Prepack BN3401
\$144 (no display)
12 Necklaces with semiprecious stones (\$12 each)



Prepack BE3401D \$130 (with display)
12 pairs of Earrings with semi-precious stones (\$10 each) and wooden display DW27 (\$10)



Prepack BE3401 \$120 (no display)
12 pairs of Earrings with semi-precious stones (\$10 each)





Banjara Collection

Necklace and earrings with semiprecious stones. Necklace chains are 28" long with 5" drop. Earrings are 3" long. Minimum 2 each.

<p>Rose Quartz</p> <p>Red Jasper</p> <p>N3431 \$12</p>	<p>Aventurine</p> <p>Tree Agate</p> <p>N3432 \$12</p>	<p>Carnelian</p> <p>Red Jasper</p> <p>N3433 \$12</p>	<p>Yellow Aventurine</p> <p>Picture Jasper</p> <p>N3434 \$12</p>	<p>Amazonite</p> <p>Lapis</p> <p>N3435 \$12</p>	<p>Tigereye</p> <p>Camel Jasper</p> <p>N3436 \$12</p>
--	---	--	--	---	---



E3431 \$12



E3432 \$12



E3433 \$12



E3434 \$12



E3435 \$12



E3436 \$12



Prepack BN6D \$97
(with display)
6 Necklaces with semiprecious stones (\$12 each) and T-bar display DM-1 (\$25)



Prepack BN6 \$72
(no display)
6 Necklaces with semiprecious stones (\$12 each)



Prepack BE6D \$80
(with display)
6 pair earrings with semiprecious stones (\$12 each) and two displays DE-4M (\$4 each)



Prepack BE6 \$72
(no display)
6 pair earrings with semiprecious stones (\$12 each)



Prepack BB12D \$132
(with display)
12 bracelets with semiprecious stones (\$10 each) and display DB12 (\$12)



Prepack BB12 \$120
(no display)
12 bracelets with semiprecious stones (\$10 each)



Blue Opal



B3401 \$10



Dendrite Opal



B3402 \$10



Merlinite



B3403 \$10



Amazonite



B3404 \$10



Carnelian



B3405 \$10



Peruvian Opal



B3406 \$10



Red Jasper



B3407 \$10



Golden Rutile



B3408 \$ 10



Tigereye



B3409 \$10



Aventurine



B3410 \$10



Yellow Aventurine



B3411 \$10



Picture Jasper



B3412 \$10



Banjara Collection

Necklaces and earrings with semiprecious stones.
Necklaces 30", earrings 3" long. Minimum 2 each.



Recommended Displays



DW28-20BR \$24



DW28-20WH \$24



Banjara Collection

Necklaces and earrings with semiprecious stones.
Necklaces 30", earrings 3" long. Minimum 2 each.



N3424 \$18



Lapis and Peruvian Opal

N3425 \$18



Agate and Bloodstone

N3426 \$18



Tigereye and Fossil Coral

Recommended Displays



DTB18 \$22

T-bar
(20.5" x 14" x 6.5")



DTB18WH \$22

T-bar
(20.5" x 14" x 6.5")



E3424 \$12



Lapis and Peruvian Opal

E3425 \$12



Agate and Bloodstone

E3426 \$12



Tigereye

Wire-wrapped Jewelry

minimum order 2 each

Handcrafted Jewelry made with semiprecious stones crafted using metal wire, which is bent, twisted and manipulated into shape, rather than being soldered or moulded. Wire wrapped jewelry is one of the oldest jewelry making techniques in the world. Its timeless quality and straightforward process continue to keep this technique popular.



Black Onyx
E3801 \$10



Labradorite
E3802 \$10



Unakite
E3803 \$10



Sodalite
E3804 \$10



Rose Quartz
E3805 \$10



Labradorite
E3806 \$10



Amethyst
E3807 \$10



Moonstone
E3810 \$10



Malachite
E3811 \$10



Amazonite
E3812 \$10



Quartz
E3813 \$10



Lapis
E3814 \$10



Unakite
E3815 \$10



Dalmatian Jasper
E3816 \$10



Red Jasper
E3817 \$10



Aventurine
E3818 \$10



Wire-wrapped Bracelets minimum order 2 each



Black Onyx
B3801 \$12



Labradorite
B3802 \$12



Unakite
B3803 \$12



Sodalite
B3804 \$12



Rose Quartz
B3805 \$12



Labradorite
B3806 \$12



Amethyst
B3807 \$12



Moonstone
B3810 \$12



Malachite
B3811 \$12



Amazonite
B3812 \$12



Quartz
B3813 \$12



Lapis
B3814 \$12



Unakite
B3815 \$12



Dalmatian Jasper
B3816 \$12



Red Jasper
B3817 \$12



Aventurine
B3818 \$12



WREB12D - \$303
(With display)
12 wire-wrap stone
bracelets (\$12 each) and
12 earrings (\$10 each)
with a wooden display
(DW43- \$39)



WREB12- \$264
(No display)
12 wire-wrap stone
bracelets (\$12 each) and
12 earrings (\$10 each)



WRB12D \$163
(With display)
12 Bracelets \$12 each, with
wooden display (DB16- \$19)



WRB12 \$144
(No Display)
12 Bracelets \$12 each



Prepack WRE36D - \$399
(Includes Display)
36 pairs of earrings (\$10 each)
with wooden spinner DW44 (\$39)



Prepack WRE36 - \$360
(No Display)
36 pairs of earrings (\$10 each)



WRE12D - \$130
(with display)
12 pairs of earrings (\$10 each)
with wooden display DW27 (\$10)



WRE12 - \$120 (No Display)
12 pairs of earrings (\$10 each)





Silver Plated Statement Jewelry Sets

Each piece is individually crafted with metal sheets and wires using traditional fabrication methods like cutting, welding, hammering, sanding, polishing and buffing.

Minimum order 2 each.



Silver Plated Jewelry Handmade brass jewelry with sterling silver plating (minimum order 2 each)



Silver Plated Jewelry Handmade brass jewelry with sterling silver plating (minimum order 2 each)



Silver-plated Jewelry pendants 2"-3", Earrings 2"-2.5", chain 30" long (minimum order 2 each)



Prepack SPN16 \$150
16 Silver-plated necklaces
(\$8 each) and wooden
T-bar display (\$22)



Prepack SPE36 \$245
36 best selling earrings
(\$6 each) and display
DW13 (\$29).

New - (Smaller Size) Silver-Plated Necklaces and Earrings (min 2 each)

Pendants are on 18" chain + 2" extension. All pendants are approximately 2" tall, earrings are 1.5"x 1.5"



Prepack SNE24 \$357
24 silver plated necklaces (\$7 each) and 24 earrings (\$6 each) and a wooden spinner display DW42A (\$45).



Prepack SN12 \$94
12 silver plated necklaces (\$7 each) and a wooden display (DW27 \$10)



Prepack SE12 \$82
12 silver plated earrings (\$6 each) and a wooden display (DW27 \$10)



New - (Smaller Size) Gold-Plated Necklaces and Earrings (min 2 each)

Pendants are on 18" chain + 2" extension. All pendants are approximately 2" tall, earrings are 1.5"x 1.5"



Prepack GNE24 \$357
24 gold-plated necklaces (\$7 each) and 24 earrings (\$6 each) and a wooden spinner display DW42A (\$45).



Prepack GN12 \$94
12 gold-plated necklaces (\$7 each) and a wooden display (DW27 \$10)



Prepack GE12 \$82
12 gold-plated earrings (\$6 each) and a wooden display (DW27 \$10)



Silver-plated Cuff Bracelets \$8 each (minimum order 2 each)



Silver-plated Cuff Bracelets \$8 each (minimum order 2 each)



Prepacks



All-in-One Prepack SNEB \$533

- 24 Necklaces - \$8 each
- 24 Earrings - \$6 each
- 16 cuff bracelets - \$8 each
- Four sided spinner DW52 (\$69)



Bracelets and Earrings Prepack SEB \$279

- 24 Earrings - \$6 each
- 12 Bracelets - \$8 each
- Display (DW43)- \$39



SB12D \$115
(with display)
12 best selling silver plated cuff bracelets (\$8 each) and a two tier display DB16 (\$19)



SB24D \$231
(with display)
24 best selling silver plated cuff bracelets (\$8 each) and a 4-tier display DB32 (\$39)



SB24 \$192 (no display)
24 best selling silver plated cuff bracelets (\$8 each)



Silver-plated Adjustable Cuff Bracelets \$8 (minimum order 2 each)



24 Bracelets Prepack SPB24-2 \$228
Assortment of cuff bracelets (at \$8 each) with wooden tray display and 12 cushions (\$36)



Gold-tone Adjustable Cuff Bracelets \$8 (minimum order 2 each)



GB12D \$115
(with display)
12 best selling gold-tone cuff
bracelets (\$8 each) and a two
tier wooden display (\$19)



GB12 \$96 (no display)
12 best selling gold-tone cuff
bracelets (\$8 each)



GB24D \$231
(with display)
24 best selling gold-tone cuff
bracelets (\$8 each) and a
4-tier wooden display (\$39)



GB24 \$192 (no display)
24 best selling gold-tone cuff
bracelets (\$8 each)



Adjustable Rings - Silver plated rings \$3 each (minimum purchase 4 per style)



R301



R302



R303



R306



R307



R308



R309



R310



R316



R317



R318



R319



R320



R321



R322



R323



R324



R327



R328



R329



R330



R331



R332



R333



R334



R335



R336



R337



R339



R341



SR12 \$36

Box of 12 assorted rings at \$3 each



SR12D \$48

12 best-selling rings at \$3 each and a wooden display DR12 (\$12)



SR24D \$96

24 best-selling rings at \$3 each and a display DR24 (\$24)



SR24 \$72

24 best-selling rings at \$3 each without display



Adjustable Rings - Gold plated rings \$3 each (minimum purchase 4 per style)



R301G



R302G



R303G



R306G



R307G



R308G



R309G



R310G



R316G



R317G



R318G



R319G



R320G



R321G



R322G



R323G



R324G



R327G



R328G



R329G



R330G



R331G



R332G



R333G



R334G



R335G



R336G



R337G



R339G



R341G



GR12 \$36

Box of 12 gold plated rings at \$3 each



GR12D \$48

12 gold-plated rings at \$3 each and a wooden display DR12 (\$12)



GR24D \$96

24 gold-plated rings at \$3 each and a display DR24 (\$24)



GR24 \$72

24 gold-plated rings at \$3 each *without* display



Silver Plated Jewelry Handmade brass jewelry with sterling silver plating (minimum order 2 each)

Bangles - Silver plated \$6 (minimum 2 each)



BW109



BW118



BW382



BW385



BW386



BW389



BW391



BW392



BW395



BW399



BW403



BW411

Prepack - BW12D \$91
(with display)
12 bangles (\$6 each), display DB8BK \$19



Adjustable Cuff Rings - Silver plated rings \$3 each (minimum purchase 4 per style)



R350



R351



R352



R353



R354



R355



R356



R357



R358



R359



R360



R361



SCR12 \$36
Box of 12 silver-plated
cuff rings at \$3 each



SCR12D \$48
12 silver plated cuff rings
at \$3 each and a wooden
display DR12 (\$12)



Akriti Collection

Silver/Gold plated necklace and earrings sets with semiprecious stones

Necklaces are 30" long with 2.75" drop
Earrings are 1.75" long
(minimum order 2 each)



Silver and Gold Plated Necklace and Earrings with semiprecious stones

(minimum order 2 each) Necklaces are 30" long with 2.75" drop, Earrings are 1.75" long



Silver and Gold Plated Necklace and Earrings with semiprecious stones

(minimum order 2 each) Necklaces are 30" long with 3" drop, Earrings are 2" long



Prepack SGN301D - \$185
(Includes Display)
8 gold plated and 8 silver plated necklaces (\$10 each) with metal T-bar display DM1 (\$25)

Prepack SGN301 - \$160
(No Display)
8 gold plated and 8 silver plated necklaces (\$10 each)

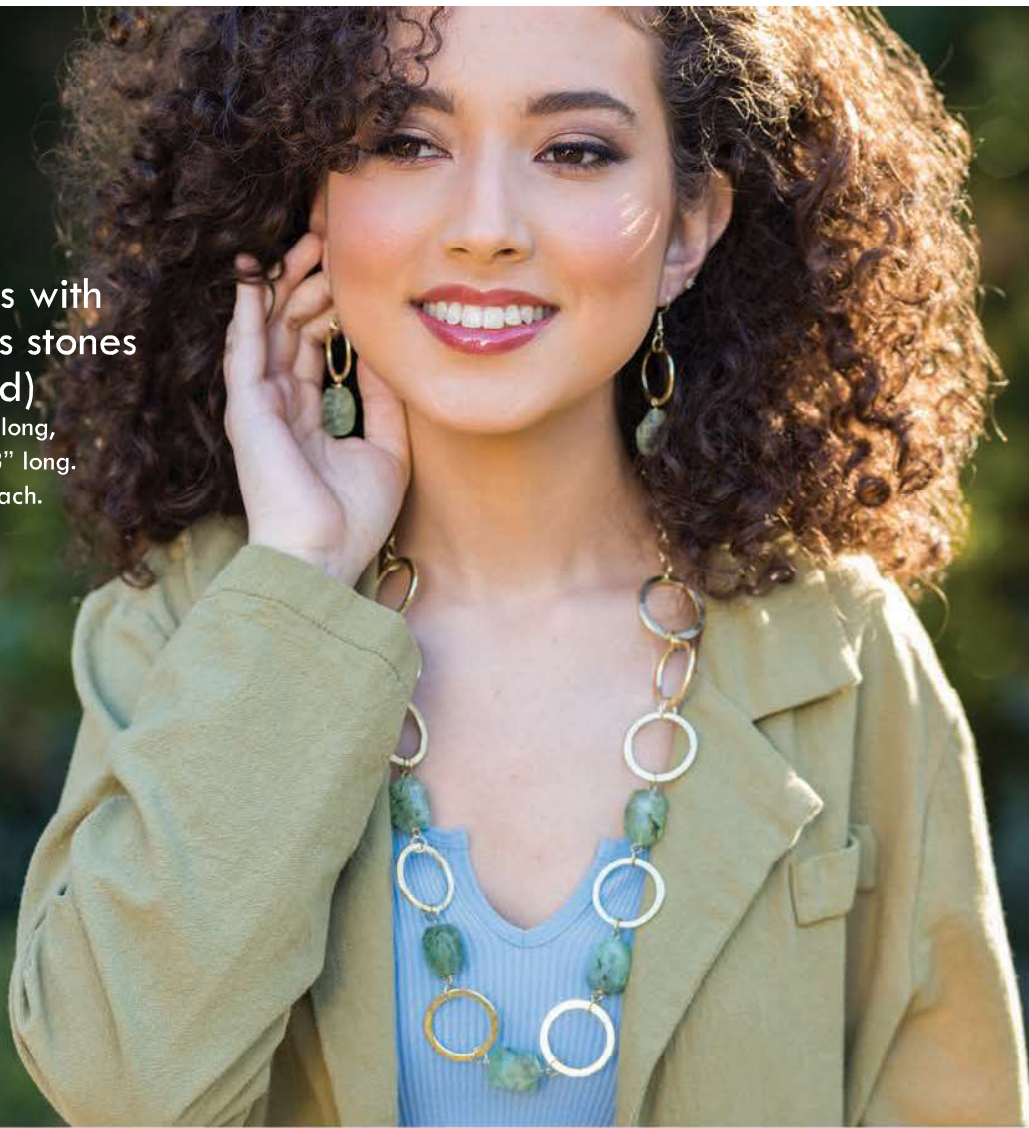


Prepack SGE301D - \$195
(Includes Display)
8 gold plated and 8 silver plated earrings (\$10 each) with wooden display DW41 (\$35)

Prepack SGE301 - \$160
(No Display)
8 gold plated and 8 silver plated earrings (\$10 each)

Necklaces
and Earrings with
semiprecious stones
(Gold Plated)

Necklaces are 30" long,
earrings are 2.5"-3" long.
Minimum order 2 each.



N501G \$16
0 612608 527980

Golden Rutile



N502G \$16
0 612608 527997

Moss Agate



N503G \$16
0 612608 528000

Red Jasper



N504G \$16
0 612608 528017

Tigereye



N505G \$16
0 612608 528024

Carnelian



N506G \$16



Dendritic Prehnite



N507G \$16



Mookaite



N508G \$16



Prehnite



E501G \$10



E502G \$10



E503G \$10



E504G \$10



E505G \$10



E506G \$10



E507G \$10



E508G \$10



Prepack GPN8D - \$153

(Includes Display)
8 gold plated necklaces with semi-precious stones (\$16 each) and a display DM1 (\$25)



Prepack GPN8 - \$128

(No Display)
8 gold plated necklaces with semi-precious stones (\$16 each)



Prepack GPE8D - \$92

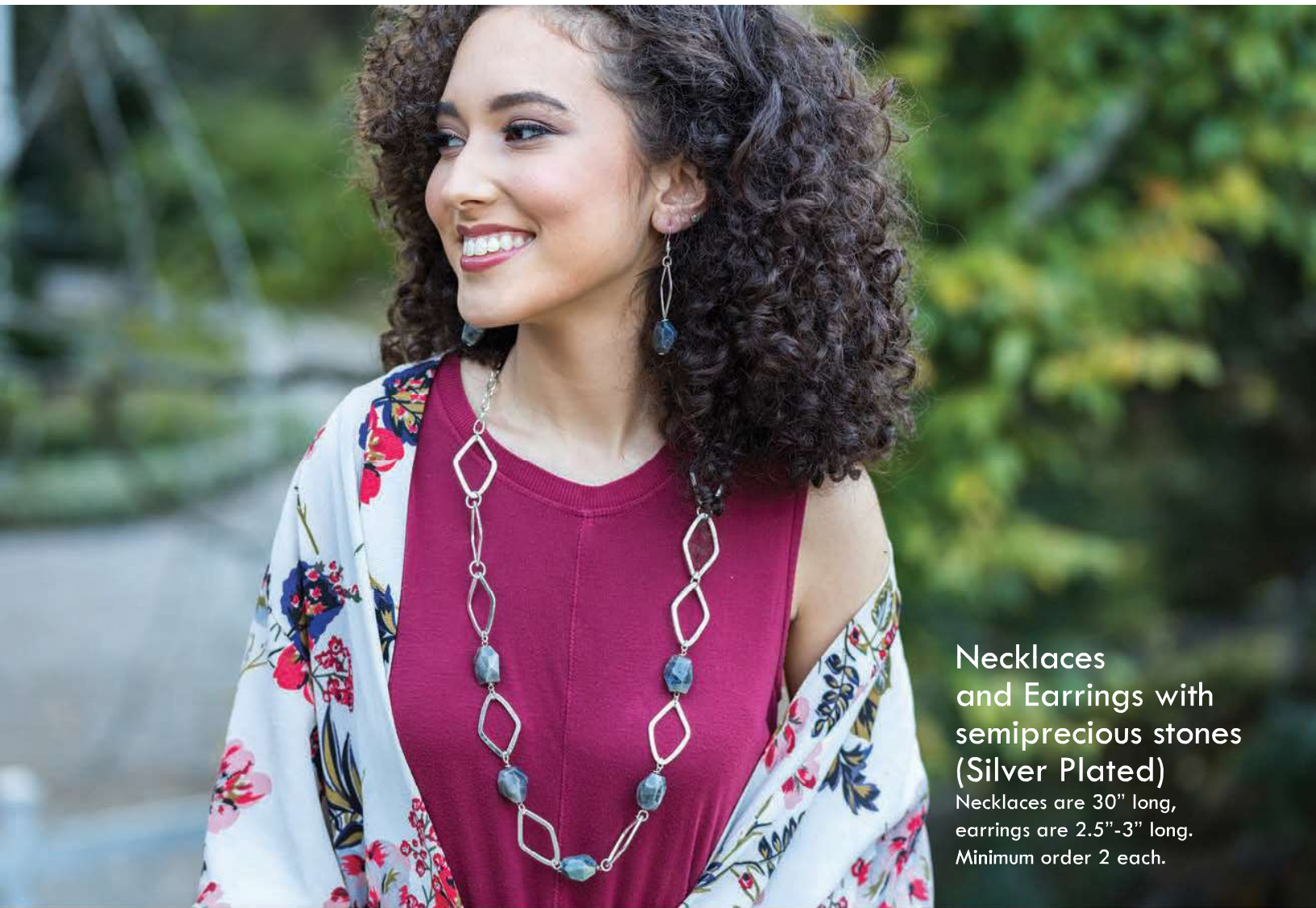
(Includes Display)
8 gold plated earrings (\$10 each) with earring display DME8 (\$12)



Prepack GPE8 - \$80

(No Display)
8 gold plated earrings (\$10 each)





**Necklaces
and Earrings with
semiprecious stones
(Silver Plated)**
Necklaces are 30" long,
earrings are 2.5"-3" long.
Minimum order 2 each.



N516S \$16



Lapis

N517S \$16

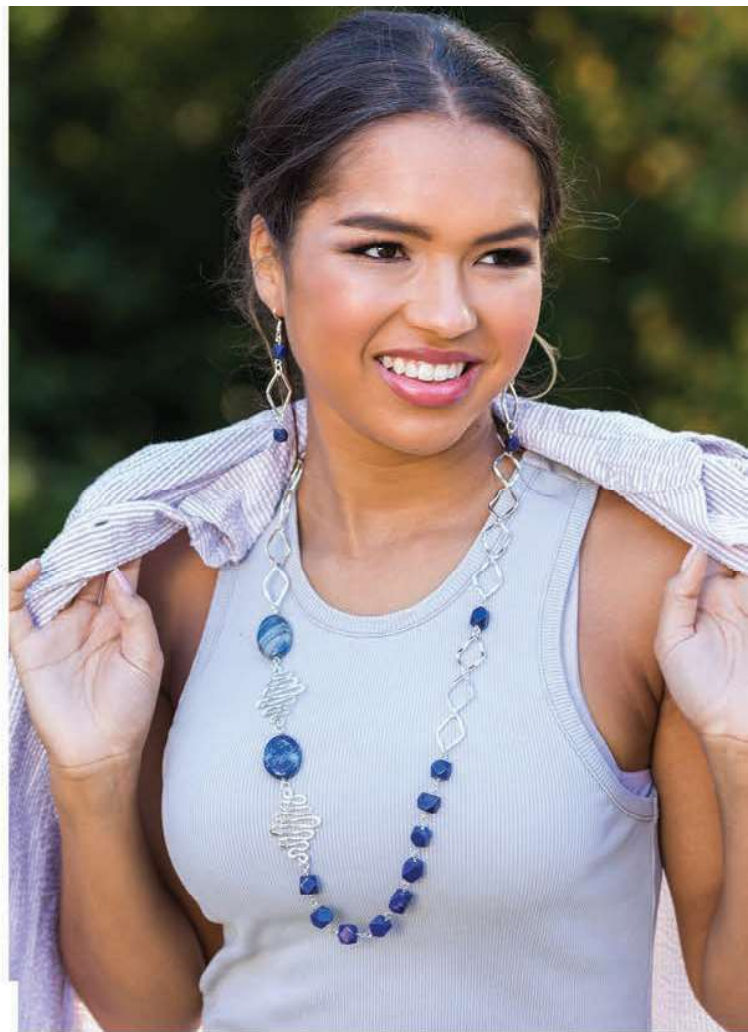


Chalcedony

N518S \$16



Dendritic Opal



E511S \$10



E512S \$10



E513S \$10



E514S \$10



E515S \$10



E516S \$10



E517S \$10



E518S \$10



SPN8D - \$153

(Includes Display)

8 silver plated necklaces with semi-precious stones (\$16 each) and a display DM1 (\$25)



SPN8 - \$128

(No Display)

8 silver plated necklaces with semiprecious stones (\$16 each)



Prepack SPE8D - \$92

(Includes Display)

8 silver plated earrings (\$10 each) with earring display DME8 (\$12)



Prepack SPE8 - \$80

(No Display)

8 silver plated earrings (\$10 each)



Gold Plated Jewelry with semiprecious stones

(minimum order 2 each)

Necklaces are 30" long with 3.5"- 4" drop

Earrings are 2.5"-3" long



Silver Plated Necklace and Earrings with semiprecious stones (minimum order 2 each)

Necklaces are 30" long with 3.5"- 4" drop, Earrings are 2.5"-3" long



E531S \$10
0 612608 528369



Blue Opal

N531S \$10
0 612608 528307



E532S \$10
0 612608 528376



Lapis

N532S \$10
0 612608 528314



E533S \$10
0 612608 528383



Pink Opal

N533S \$10
0 612608 528321



E534S \$10
0 612608 528390



Ametrine

N534S \$10
0 612608 528338



E535S \$10
0 612608 528406



Amazonite

N535S \$10
0 612608 528345



E536S \$10
0 612608 528413



Onyx

N536S \$10
0 612608 528352



Prepack SGP12D - \$145
(Includes Display)
6 gold plated and 6 silver plated necklaces (\$10 each) with metal T-bar display DM1 (\$25)



Prepack SGP12 - \$120
(No Display)
6 gold plated and 6 silver plated necklaces (\$10 each)



Prepack SGPE12D - \$130
(Includes Display)
6 gold plated and 6 silver plated earrings (\$10 each) with wooden slotted display DW27 (\$10)



Prepack SGPE12 - \$120
(No Display)
6 gold plated and 6 silver plated earrings (\$10 each)



Patina Collection

Delicately handcrafted copper
and brass jewelry with
colorful patina effects



Silver Patina Necklaces (min order 2 each)



Silver Patina Bracelets and Earrings (min order 2 each)



BP318 \$9



BP319 \$9



BP320 \$9



BP321 \$9



BP322 \$9



BP323 \$9



BP324 \$9



BP325 \$9



BP326 \$9



BP327 \$9



BP328 \$9



BP329 \$9



EP318 \$8



EP319 \$8



EP320 \$8



EP321 \$8



EP322 \$8



EP323 \$8



EP324 \$8



EP325 \$8



EP326 \$8



EP327 \$8



EP328 \$8



EP329 \$8



Silver Patina Collection- Rings (min order 4 each)



RP318 \$4



RP319 \$4



RP320 \$4



RP321 \$4



RP322 \$4



RP323 \$4



RP324 \$4



RP325 \$4



RP326 \$4



RP327 \$4



RP328 \$4



RP329 \$4



Prepacks



Prepack PSEB - \$243 (Display Included)
12 Patina (silver plated) bracelets (\$9 each) and 12 Earrings (\$8 each) with DW43 display (\$39)



PSB12D \$127 (Display Included)
12 Patina (silver plated) cuffs for \$9 each and wood display DB16 (\$19)



PSB12 \$108 (No Display)
12 Patina (silver plated) cuffs for \$9 each



PSE12D \$106 (Display Included)
12 Patina (silver plated) earrings for \$8 each and wood display DW27 (\$10)



PSE12 \$96 (No Display)
12 Patina (silver plated) earrings for \$8 each



MR12PS \$48 (Rings in a box)
12 Patina (silver plated) rings \$4 each



MR12PSD \$60 (Rings with wooden display)
12 Patina (silver plated) rings \$4 each and display DR12 (\$12)



Copper Patina Bracelets and Earrings (min order 2 each)



BP330 \$9



BP331 \$9



BP332 \$9



BP333 \$9



BP334 \$9



BP335 \$9



BP336 \$9



BP337 \$9



BP338 \$9



BP339 \$9



BP340 \$9



BP341 \$9



EP330 \$8



EP331 \$8



EP332 \$8



EP333 \$8



EP334 \$8



EP335 \$8



EP336 \$8



EP337 \$8



EP338 \$8



EP339 \$8



EP340 \$8



EP341 \$8



Copper Patina - Rings (min order 4 each)



RP330 \$4



RP331 \$4



RP332 \$4



RP333 \$4



RP334 \$4



RP335 \$4



RP336 \$4



RP337 \$4



RP338 \$4



RP339 \$4



RP340 \$4



RP341 \$4



Prepacks



Prepack CPEB4 - \$243 (Display Included)
12 Copper patina bracelets (\$9 each) and 12 Earrings (\$8 each) with DW43 display (\$39)



CPB4-12D \$127 (Display Included)
12 Copper patina cuffs for \$9 each and wood display DB16 (\$19)



CPB4-12 \$108 (No Display)

12 Cuffs for \$9 each



MR12CP4 \$48 (Rings in a box)
12 Copper patina rings \$4 each



MR12CP4D \$60 (Rings with wooden display)
12 Copper patina rings \$4 each and display DR12 (\$12)



CPE4-12D \$106 (Display Included)
12 Copper patina earrings for \$8 each and wood display DW27 (\$10)



CPE4-12 \$96 (No Display)

12 Earrings for \$8 each



MR24CPD \$120 (Display Included)
24 Copper patina rings (\$4 each) and a display DR24 (\$24)



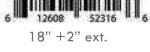
MR24CP \$96 (No Display)

24 Copper patina rings \$4 each



Copper Patina Necklaces (min order 2 each)

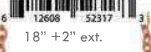
NP306 \$12



18" + 2" ext.



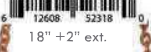
NP307 \$12



18" + 2" ext.



NP308 \$12



18" + 2" ext.



NP309 \$12



30"



NP310 \$12



18" + 2" ext.



NP311 \$12



30"



NP312 \$12



30"



NP313 \$12



30"



NP314 \$12



30"



NP315 \$12



18" + 2" ext.



NP316 \$12



18" + 2" ext.



NP317 \$12



30"



Copper Patina- Bracelets (min order 2 each)



BP306 \$12
6 12608 52290 6



BP307 \$12
6 12608 52281 7



BP308 \$12
6 12608 52282 4



BP309 \$12
6 12608 52283 1



BP310 \$12
6 12608 52284 6



BP311 \$12
6 12608 52285 5



BP312 \$12
6 12608 52286 2



BP313 \$12
6 12608 52287 9



BP314 \$12
6 12608 52288 6



BP315 \$12
6 12608 52289 3



BP316 \$12
6 12608 52290 9



BP317 \$12
6 12608 52291 6



EP306 \$10
6 12608 52292 3



EP307 \$10
6 12608 52293 0



EP308 \$10
6 12608 52294 7



EP309 \$10
6 12608 52295 4



EP310 \$10
6 12608 52296 1



EP311 \$10
6 12608 52297 8



EP312 \$10
6 12608 52298 5



EP313 \$10
6 12608 52299 2



EP314 \$10
6 12608 52300 9



EP315 \$10
6 12608 52301 6



EP316 \$10
6 12608 52302 3



EP317 \$10
6 12608 52303 0

Copper Patina Collection- Rings (min order 4 each)



RP306 \$5



RP307 \$5



RP308 \$5



RP309 \$5



RP310 \$5



RP311 \$5



RP312 \$5



RP313 \$5



RP314 \$5



RP315 \$5



RP316 \$5



RP317 \$5



Prepacks



Prepack CPEB3 \$303 (Display Included)
12 Copper Patina Bracelets (\$12 each) and 12 Earrings (\$10 each) with DW43 display (\$39)



CPB3-12D - \$163 (Display Included)
12 Cuffs (\$12 each) and wood display DB16 (\$19)



CPB3-12 \$144 (No Display)
12 Cuffs for \$12 each



MR12CP3 \$60 (Rings in a box)
12 Copper Patina Rings \$5 each



MR12CP3D \$72 (Rings with wooden display)
12 Copper Patina Rings \$5 each and display DR12 (\$12)



CPN3-12D (with display) \$166
12 Copper Patina Necklaces (\$12 each) and wooden T-bar display (DW-20, \$22)



CPN3-12 (no display) \$144
12 Copper Patina Necklaces (\$12 each)



CPE3-12D - \$130 (Display Included)
12 Earrings (\$10) and display DW27 (\$10)



CPE3-12 \$120 (No Display)
12 Earrings for \$10 each



Janya

Mixed Metals Collection

The Janya Collection consists of jewelry made with stainless steel, brass and copper with genuine semiprecious stones. Using techniques that have been handed down for generations, our master craftsmen and their families are able to create stunning pieces that are simply timeless.

Janya Semiprecious Stone Sets (necklaces on 30" long chain)

LABRADORITE

B2202 \$14
7 12392 33235 4

E2202 \$10
7 12392 33720 5

P2202 \$14
7 12392 33687 1

R2202 \$7
7 12392 32976 7

TIGER EYE

B2204 \$14
7 12392 33237 8

E2204 \$10
7 12392 33722 9

P2204 \$14
7 12392 33689 5

R2204 \$7
7 12392 32978 1

LAPIS LAZULI

B2206 \$14
7 12392 33239 2

E2206 \$10
7 12392 33724 3

P2206 \$14
7 12392 33691 8

R2206 \$7
7 12392 32980 4

AMETHYST

B2207 \$14
7 12392 33240 8

E2207 \$10
7 12392 33725 0

P2207 \$14
7 12392 33692 5

R2207 \$7
7 12392 32981 1

RAINBOW MOONSTONE

B2212 \$14
7 12392 33245 3

E2212 \$10
7 12392 33730 4

P2212 \$14
7 12392 33697 0

R2212 \$7
7 12392 32986 6

AMAZONITE

B2213 \$14
7 12392 33246 0

E2213 \$10
7 12392 33731 1

P2213 \$14
7 12392 33698 7

R2213 \$7
7 12392 32987 3

Janya Semiprecious Stone Sets (necklaces on 30" long chain)

BLACK ONYX

P2214 \$14
12392 33699 4

E2214 \$10
12392 33732 8

B2214 \$14
12392 33247 7

R2214 \$7
12392 32988 0

MALACHITE

B2215 \$14
12392 34047 2

E2215 \$10
12392 34048 9

R2215 \$7
12392 34046 5

P2215 \$14
12392 34045 8

MOSS AGATE

B2217 \$14
12608 51768 4

E2217 \$10
12608 51771 4

R2217 \$7
12608 51770 7

P2217 \$14
12608 51769 1

DALMATIAN JASPER

B2218 \$14
12608 51772 1

R2218 \$7
12608 51774 5

E2218 \$10
12608 51775 2

P2218 \$14
12608 51773 8

SNOWFLAKE OBSIDIAN

B2219 \$14
12608 51776 9

E2219 \$10
12608 51779 0

R2219 \$7
12608 51778 3

P2219 \$14
12608 51777 6

PICTURE JASPER

B2220 \$14
12608 51780 6

R2220 \$7
12608 51782 0

E2220 \$10
12608 51783 7

P2220 \$14
12608 51781 3

Janya Semiprecious Stone Sets (necklaces on 30" long chain)

RHODONITE

B2221 \$14
6 12608 51784 4

E2221 \$10
6 12608 51787 5

P2221 \$14
6 12608 51785 1

R2221 \$7
6 12608 51786 8

RUBY FUSCHITE

B2222 \$14
6 12608 53754 1

E2222 \$10
6 12608 53755 2

P2222 \$14
6 12608 53753 8

R2222 \$7
6 12608 53754 5

BUMBLEBEE JASPER

B2223 \$14
6 12608 53756 9

E2223 \$10
6 12608 53759 6

P2223 \$14
6 12608 53757 6

R2223 \$7
6 12608 53758 3

LEMON CHRYSOPRASE

B2224 \$14
6 12608 53760 6

E2224 \$10
6 12608 53763 7

P2224 \$14
6 12608 53761 3

R2224 \$7
6 12608 53762 0

APATITE

B2225 \$14
6 12608 53764 4

E2225 \$10
6 12608 53767 5

P2225 \$14
6 12608 53765 1

R2225 \$7
6 12608 53766 8

RUBY ZOISITE

B2226 \$14
6 12608 53768 2

E2226 \$10
6 12608 53771 2

P2226 \$14
6 12608 53769 9

R2226 \$7
6 12608 53770 5

Janya Collection Prepacks



All- in- one Prepack MNEB \$581
 12 stone necklaces (\$14 each)
 12 earrings (\$10 each)
 16 cuffs (\$14 each)
 Four sided display (\$69)



MMNL12 \$190
 (With Display)
 12 necklaces with semiprecious stones on 30"chains (\$14 each) and a wooden T-bar display DW20 (\$22)



MMNL12R \$168
 (No Display)
 12 necklaces with semiprecious stones on 30"chains (\$14 each)



MMB12SPD \$197
 (With Display)
 12 semiprecious stone bracelets (\$14 each) with wooden display DB24 (\$29)



MMB12SP \$168
 (No Display)
 12 semiprecious stone bracelets (\$14 each)



MME24SPD \$275
 (With Display)
 24 semiprecious stone earrings (\$10 each) and a wooden display DW41 (\$35)



MME24SP \$240
 (No Display)
 24 semiprecious stone earrings (\$10 each)



MR12SP \$84
 Assortment of 12 cuff rings with oval semiprecious stones (\$7 each)



MR12SPD \$96
 Assortment of 12 cuff rings with oval semiprecious stones (\$7 each) and a wooden display DR12 (\$12)



MME12SPD \$130
 Assortment of 12 semiprecious stone earrings (\$10 each) and a wooden display (\$10)



Janya Collection Cuff Bracelets \$9 each (average width 1") minimum 2 each



B001



B010



B011



B030



B040



B042



B043



B052



B053



B055



B057



B073 Moonstone



B074 Rose Quartz



B076 Turquoise



B091



B094



B095 Black Onyx



B096 Amethyst



B097 Red Onyx



B099 Amazonite



B233



B240



B241 Lapis



B242 Lemon Chrysoprase



B244 Labradorite



B245 Malachite



B246 Rose Quartz



B247 Apatite



Janya Earrings (stainless steel with brass and copper) minimum order 2 each



E005 \$9 (1"x1")



E011 \$9 (0.75"x1.25")



E019 \$9 (0.75"x1.5")



E025 \$9 (1.25"x1.75")



E026 \$9 (1.25"x1.25")



E028 \$9 (1.25"x1.75")



E032 \$9 (0.75"x1.25")



E033 \$9 (1"x1")



E122 \$9 (1.25"x1.25")



E153 \$9 (1.25"x1.75")



E167 \$9 (0.75"x1.5")



E171 \$9 (1.25"x1")



E239 \$9 (0.75"x1.25")



E242 \$9 (1"x1.25")



E245 \$9 (0.75"x1.25")



E249 \$9 (0.75"x1.25")



(MMB20-N) \$209

20 bracelets at \$9 each, and wooden display at \$29.



(MMB24-N) \$252 (with display)
24 cuffs (at \$9 each) with wood crate display and 12 burlap cushions (\$36)



Refill Prepack MMB24-NR \$216 (no display)



MME24D \$251 (With Display)
Includes 24 pairs of earrings (no stones) for \$9 each and a wooden display DW41 for \$35



MME24 \$216 (No Display)
Includes 24 pairs of earrings without stones (\$9 each)



MMEB \$255 (with display)
12 prs best-selling earrings (\$9 each) and 12 cuff bracelets (\$9 each) and display (\$39)



Janya Mixed Metal Adjustable Cuff Rings

Adjustable cuff rings (\$3 each) minimum order - 4 per style



R041



R042



R043



R044



R045



R046



R048



R049



R050



R051



R054



R056



R057



R058



R061



R069



R072



R077



R102



R111



R116



R125



R126



R131



R136



R139



R140



R145



MR24D \$96 24 rings (\$3 each) and display DR24 (\$24)



MR24 \$72 24 rings (\$3 each) in box



12 rings (\$3 each) in box MR12 \$36



12 rings (\$3 each) and display (\$12) MR12D \$48



New Narrow Rings \$3 each



R001



R002



R003



R004



R005



R006



12 narrow rings (\$3 each) in a box MR12N \$36



R007



R008



R009



R010



R011



R012



12 narrow rings (\$3 each) and display (\$12) MR12ND \$48



KASHI

NATURAL STONE COLLECTION

HANDCRAFTED NATURAL
STONE JEWELRY WITH VINTAGE
SILVER FINISH

Our Kashi Collection is inspired by nature and created with love by our artisan group from Jaipur, India. Beautiful, ethically sourced natural semiprecious stones are the hallmark of this collection.

The stones are custom-cut for our designs. Each individual piece of these natural stones has its own story to tell. Since nature doesn't mass produce anything, please expect colors and shapes of the stones to vary.



KASHI SEMIPRECIOUS STONE SETS (MINIMUM ORDER 2 EACH, RINGS 4 EACH)

BL4601 \$20
E4601 \$10
BC4601 \$12
N4601 \$24
P4601 \$12
R4601 \$7

Chain 30" long
18" + 2" extn.

LABRRADORITE

BL4602 \$20
E4602 \$10
BC4602 \$12
N4602 \$24
P4602 \$12
R4602 \$7

Chain 30" long
18" + 2" extn.

PICTURE JASPER

BL4603 \$20
E4603 \$10
BC4603 \$12
N4603 \$24
P4603 \$12
R4603 \$7

Chain 30" long
18" + 2" extn.

RUBY ZOISITE

BL4604 \$20
E4604 \$10
BC4604 \$12
N4604 \$24
P4604 \$12
R4604 \$7

Chain 30" long
18" + 2" extn.

LAPIS

BL4605 \$20
E4605 \$10
BC4605 \$12
N4605 \$24
P4605 \$12
R4605 \$7

Chain 30" long
18" + 2" extn.

MALIGANO JASPER

BL4606 \$20
E4606 \$10
BC4606 \$12
N4606 \$24
P4606 \$12
R4606 \$7

Chain 30" long
18" + 2" extn.

AMAZONITE

KASHI SEMIPRECIOUS STONE SETS (MINIMUM ORDER 2 EACH, RINGS 4 EACH)

BL4607 \$20
 E4607 \$10
 BC4607 \$12
 P4607 \$12
 Chain 30" long
 N4607 \$24
 18" + 2" extn.
 R4607 \$7

APATITE

BL4608 \$20
 E4608 \$10
 BC4608 \$12
 P4608 \$12
 Chain 30" long
 N4608 \$24
 18" + 2" extn.
 R4608 \$7

BLACK FOSSIL CORAL

BL4609 \$20
 E4609 \$10
 BC4609 \$12
 P4609 \$12
 Chain 30" long
 N4609 \$24
 18" + 2" extn.
 R4609 \$7

DENDRITIC OPAL

BL4610 \$20
 E4610 \$10
 BC4610 \$12
 P4610 \$12
 Chain 30" long
 N4610 \$24
 18" + 2" extn.
 R4610 \$7

UNAKITE

BL4611 \$20
 E4611 \$10
 BC4611 \$12
 P4611 \$12
 Chain 30" long
 N4611 \$24
 18" + 2" extn.
 R4611 \$7

LEMON CHRYSOPRASE

BL4612 \$20
 E4612 \$10
 BC4612 \$12
 P4612 \$12
 Chain 30" long
 N4612 \$24
 18" + 2" extn.
 R4612 \$7

BUMBLEBEE JASPER

KASHI COLLECTION

Antique silver-tone jewelry
with semiprecious stones

Necklaces - 16" long
with 2 inch extn.
minimum order 2 each
Pendant shapes will vary



KASHI COLLECTION Semi-Precious Stone Jewelry



P47RF \$10

Ruby Fuchsite



P47RH \$10

Rhodonite



P47RJ \$10

Red Jasper



P47RZ \$10

Ruby Zoisite



P47SD \$10

Sodalite



P47TE \$10

Tigereye

Adjustable rings with semiprecious stones (minimum order 4 each)
STONE SHAPES WILL VARY



Amethyst
R47AM \$7



Apatite
R47AP \$7



Amazonite
R47AZ \$7



Black Fossil Coral
R47BFC \$7



Bumblebee Jasper
R47BJ \$7



Blue Opal
R47BOP \$7



Blood Stone
R47BS \$7



Crazy Lace Agate
R47CLA \$7



Dendrite Opal
R47DO \$7



Dragon Stone
R47DS \$7



Kambaba Jasper
R47KJ \$7



Lapis
R47L \$7



Lemon Chrysoprase
R47LC \$7



Labradorite
R47LD \$7



Maligano Jasper
R47MJ \$7



Malachite
R47ML \$7



Picture Jasper
R47PJ \$7



Prehnite
R47PN \$7



Ruby Fuchsite
R47RF \$7



Rhodonite
R47RH \$7



Red Jasper
R47RJ \$7



Ruby Zoisite
R47RZ \$7



Sodalite
R47SD \$7



Tigereye
R47TE \$7

KASHI COLLECTION Semi-Precious Stone Jewelry

Earrings with semiprecious stones (minimum order 2 each) approximate size 0.75" x 1.5"
STONE SHAPES WILL VARY



KASHI COLLECTION Semi-Precious Stone Jewelry

Cuff bracelets with semiprecious stones (minimum order 2 each)
STONE SHAPES WILL VARY



KASHI COLLECTION

Antique silver-tone jewelry
with semiprecious stones

HANDCRAFTED
METALS WITH WITH
A VINTAGE SILVER
FINISH

Necklaces - 16" long
with 2 inch extn.
minimum order 4 each
Pendant shapes will vary



KASHI COLLECTION Semi-Precious Stone Jewelry

Earrings with semiprecious stones (minimum order 4 each) approximate size 0.3" x 0.5"
STONE SHAPES WILL VARY



Adjustable rings with semiprecious stones (minimum order 4 each)
STONE SHAPES WILL VARY



KASHI COLLECTION- PREPACKS



Mix of Large and Small Stones
KSPDW51 - \$1071 (Includes Display)
 30 earrings (\$10 each), 30 necklaces (\$10 each),
 30 rings (\$7 each), 12 necklaces (\$7 each), 18
 earrings (\$6 each) and display DW51 (\$69).
 Four free \$10- necklaces to offset display.



Small Stones Prepack
KSP27 - \$245
 (Includes Display)
 12 earrings (\$6 each), 12 necklaces
 (\$7 each), 12 rings (\$5 each),
 wooden spinner DW45 (\$39).
 Two free necklaces to offset display



Large Stones Prepack
KSP47 - \$363
 (Includes Display)
 12 earrings (\$10 each), 12 necklaces
 (\$10 each), 12 rings (\$7 each),
 wooden spinner DW45 (\$39).
 Two free necklaces to offset display



**Large and Small
 Stone Mix**
KSPDWF - \$2205
 (Includes FREE Display)

Panel 1
 45 large pendants (\$10 each)
 45 small pendants (\$7 each)

Panel 2
 90 large earrings (\$10 each)

Panel 3
 90 small earrings (\$6 each)

Panel 4
 30 large rings (\$7 each)
 30 rings (\$5 each)

and **FREE** Floor unit spinner
 DWF-1 (\$249 saving!)



KSBC24D - \$317
 (Includes Display)
 24 Cuff bracelets
 (\$12 each) and 3-tier
 display DB24 (\$29)



KSBC24 - \$288 (no
 display)
 24 Cuff bracelets
 (\$12 each)



KSR1 2SMD - \$72 (Includes Display)
 12 Rings with small stones (\$5 each) and
 display DR12 (\$12)



KSR1 2SM - \$60 (no Display)
 12 Rings with small stones (\$5 each)



KSR12D - \$96 (Includes Display)
 12 Rings (\$7 each) and display DR12 (\$12)



KSR12 - \$84 (no Display)
 12 Rings (\$7 each)



KSP12D - \$169
 (Includes Display)
 12 Pendants necklaces
 (\$12 each) and dis-
 play DM1 (\$25)



KSP12 - \$144 (No
 Display)
 12 semiprecious stone
 pendant necklaces
 (\$12 each)



KSR24D - \$192 (Includes Display)
 24 Rings (\$7 each) and display DR24 (\$24)



KSR24 - \$168 (no display)
 24 Rings (\$7 each)



KSE24D - \$265
 (Includes Display)
 24 stone earrings
 (\$10 each) and dis-
 play DME24 (\$25)



KSE24 - \$240 (no
 Display)
 24 stone earrings
 (\$10 each)



KSBL12D - \$255 (Includes Display)
 12 Link Bracelets (\$20 each) and display
 DTB4 (\$15)



Tanvi

The Tanvi Collection from Anju is made by traditional craftsmen in India. The jewelry making techniques of delicate filigree work and detailed scrollwork have been handed down to them through generations. The designs in this collection are a striking expression of India's aesthetic and cultural history.

All pieces in this collection are made with brass. They are either silver or gold plated. An antique finish has been added to these pieces.



E1501 \$9



E1502 \$9



E1503 \$9



E1504 \$9



E1505 \$9



E1506 \$9



E1507 \$9



E1508 \$9



E1509 \$9



E1510 \$9



E1511 \$9



E1512 \$9



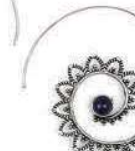
E1525 \$9



E1526 \$9



E1528 \$9



E1529 \$9



Tanvi - Earrings (minimum order 2 each)



E1513 \$9



E15014 \$9



E1515 \$9



E1516 \$9



E1517 \$9



E1518 \$9



E1519 \$9



E1520 \$9



E1521 \$9



E1522 \$9



E1523 \$9



E1524 \$9



Moonstone

E1531 \$9



Tigereye

E1534 \$9



Onyx

E1535 \$9



Rose Quartz

E1536 \$9



Lapis



E1537 \$9
0.6" x 0.75"

6 12608 52426 2

Black Onyx



E1538 \$9
0.5" x 1"

6 12608 52427 9

Rose Quartz



E1539 \$9
0.8" x 1.25"

6 12608 52428 6

Tigereye



E1540 \$9
1" x 1.5"

6 12608 52429 3

Turquoise



E1541 \$9
1.25" x 1"

6 12608 52430 9

Labradorite



E1542 \$9
1" x 1.75"

6 12608 52431 6

Charoite



E1543 \$9
0.8" x 1"

6 12608 52432 3

Goldstone



E1544 \$9
0.75" x 1.5"

6 12608 52433 0

Malachite



E1545 \$9
0.8" x 1.25"

6 12608 52434 7

Moonstone



E1546 \$9
1" x 1"

6 12608 52435 4

Yellow Agate



E1547 \$9
0.8" x 1.5"

6 12608 52436 1

Garnet



E1548 \$9
0.8" x 1.75"

6 12608 52437 8

Turquoise



E1549 \$9
1" x 1.25"

6 12608 52438 5

Goldstone



E1550 \$9
0.75" x 0.75"

6 12608 52439 2

Charoite



E1551 \$9
0.8" x 1.25"

6 12608 52440 8

Black Onyx



E1552 \$9
1" x 1.25"

6 12608 52441 5

Moonstone



E1553 \$9
1" x 1.25"

6 12608 52442 2

Lapis



E1554 \$9
1" x 1.25"

6 12608 52443 9

Tigereye



E1555 \$9
1" x 1.5"

6 12608 52444 6

Yellow Agate



E1556 \$9
0.75" x 1.25"

6 12608 52445 3

Red Onyx



E1557 \$9
0.75" x 1"

6 12608 52446 0

Rose Quartz



E1558 \$9
0.75" x 1.75"

6 12608 52447 7

Labradorite



E1559 \$9
0.75" x 1.25"

6 12608 52448 4

Malachite



E1560 \$9
0.5" x 1.25"

6 12608 52449 1



Rose Quartz

E1561S \$9
0.75" x 0.75"



Lapis

E1562S \$9
0.5" x 1.5"



Charoite

E1563S \$9
0.5" x 0.75"



Blue Chalcedony

E1564S \$9
0.75" x 1"



Turquoise

E1565S \$9
0.5" x 1"



Amazonite

E1566S \$9
0.5" x 1.5"



Moonstone

E1567S \$9
0.75" x 0.75"



Aventurine

E1568S \$9
0.5" x 1.25"



Garnet

E1569S \$9
0.8" x 1.125"



Black Onyx

E1570S \$9
1" x 1.5"



Labradorite

E1571S \$9
1" x 1.25"



Malachite

E1572S \$9
0.6" x 0.75"



Rose Quartz

E1561G \$9
0.75" x 0.75"



Lapis

E1562G \$9
0.5" x 1.5"



Charoite

E1563G \$9
0.5" x 0.75"



Blue Chalcedony

E1564G \$9
0.75" x 1"



Turquoise

E1565G \$9
0.5" x 1"



Amazonite

E1566G \$9
0.5" x 1.5"



Moonstone

E1567G \$9
0.75" x 0.75"



Aventurine

E1568G \$9
0.5" x 1.25"



Garnet

E1569G \$9
0.8" x 1.125"



Black Onyx

E1570G \$9
1" x 1.5"



Labradorite

E1571G \$9
1" x 1.25"



Malachite

E1572G \$9
0.6" x 0.75"



Tanvi

The earrings in the Tanvi Collection are handcrafted using brass and genuine semiprecious stones. This collection is offered in silver plated brass and gold-tone brass.



Tanvi - Earrings (minimum order 2 each)



E1585G \$9
1" x 1.5"



E1586G \$9
1" x 1.25"



E1587G
0.75" x 1.5"



E1588G \$9
1.25" x 1.5"



Lapis

E1589G \$9
0.3" x 1.5"



Labradorite

E1590G \$9
0.75" x 0.75"



Black Onyx

E1591G
1" x 1"



Rose Quartz

E1592G \$9
0.9" x 1"



Moostone

E1593G \$9
1" x 1.5"



Amazonite

E1594G \$9
0.9" x 1.75"



Charolite

E1595G
0.5" x 1.25"



Garnet

E1596G \$9
1.25" x 1.75"



Prepacks



Prepack TVE24D - \$255
(Includes Display)
24 pairs of earrings (\$9 each) with wooden spinner DW44 (\$39)



Prepack TVE24 - \$216
(No Display)
24 pairs of earrings (\$9 each)



Prepack TVE128D - \$1221
(Includes Display)
128 pairs of earrings (\$9 each) with wooden spinner DW51 (\$69) + 4 pairs of earrings free to offset display cost



Prepack TVE128 - \$1152
(No Display)
128 pairs of earrings (\$9 each)



Tanvi - Bracelets with semiprecious stones (minimum order 2 each)



TB12SD \$139 (With Display)
12 silver-plated bracelets (\$10 each)
with display DB8BK (\$19)



TB12S \$120 (No Display)
12 silver-plated bracelets (\$10 each)

TB12GD \$139 (With Display)
12 gold-plated bracelets (\$10 each)
with display DB8BK (\$19)



TB12G \$120 (No Display)
12 gold-plated bracelets (\$10 each)

Tanvi

Necklaces

The traditional designs of this collection are inspired by natural and stellar formations. Our master craftspeople have used this inspiration to create unique pieces of necklaces in silver and gold-plated finish. Some of the pieces are accented by genuine semiprecious stones.

The chains are 16" long with 2" extender. Minimum 2 each.



Labradorite
P1501 \$10



Lapis
P1502 \$10



Amethyst
P1503 \$10



Black Onyx
P1504 \$10



Garnet
P1505 \$10



Moonstone
P1506 \$10



Black Onyx
P1507 \$10



Garnet
P1508 \$10



Tigereye
P1509 \$10



Labradorite
P1510 \$10



Amethyst
P1511 \$10



Moonstone
P1512 \$10



TP12SD \$130 (With Display)
12 silver-plated necklaces (\$10 each)
with display DW27 (\$10)



TP12S \$120 (No Display)
12 silver-plated necklaces (\$10 each)



TP12GD \$130 (With Display)
12 gold-plated necklaces (\$10 each)
with display DW27 (\$10)



TP12G \$120 (No Display)
12 gold-plated necklaces (\$10 each)



TPE16D \$339 (With Display)
16 Tanvi necklaces (\$10 each) and
16 Tanvi earrings (\$9 each) with
display DW41 (\$35)



TPE16 \$304 (No Display)
16 Tanvi necklaces (\$10 each)
and 16 Tanvi earrings (\$9 each)



Tanvi Adjustable rings with semiprecious stones (minimum order 4 each)

 Red Onyx R1501S \$5 	 Black Onyx R1502S \$5 	 Moonstone R1503S \$5 	 Malachite R1504S \$5 	 Lapis R1505S \$5 	 Tiger eye R1506S \$5 
 Amazonite R1507S \$5 	 Amethyst R1508S \$5 	 Goldstone R1509S \$5 	 Yellow Agate R1510S \$5 	 Rose Quartz R1511S \$5 	 Moonstone R1512S \$5 
 Moonstone R1513S \$5 	 Amazonite R1514S \$5 	 Turquoise R1515S \$5 	 Garnet R1516S \$5 	 Tiger eye R1517S \$5 	 Labradorite R1518S \$5 
 Amazonite R1519S \$5 	 Amethyst R1520S \$5 	 Labradorite R1521S \$5 	 Moonstone R1522S \$5 	 Lapis R1523S \$5 	 Malachite R1524S \$5 
 Red Onyx R1501G \$5 	 Black Onyx R1502G \$5 	 Moonstone R1503G \$5 	 Malachite R1504G \$5 	 Lapis R1505G \$5 	 Tiger eye R1506G \$5 
 Amazonite R1507G \$5 	 Amethyst R1508G \$5 	 Goldstone R1509G \$5 	 Yellow Agate R1510G \$5 	 Rose Quartz R1511G \$5 	 Moonstone R1512G \$5 
 Moonstone R1513G \$5 	 Amazonite R1514G \$5 	 Turquoise R1515G \$5 	 Garnet R1516G \$5 	 Tiger eye R1517G \$5 	 Labradorite R1518G \$5 
 Amazonite R1519G \$5 	 Amethyst R1520G \$5 	 Labradorite R1521G \$5 	 Moonstone R1522G \$5 	 Lapis R1523G \$5 	 Malachite R1524G \$5 

Tanvi

Rings Prepacks



TR12SD \$72 (With Display)

12 silver-plated rings (\$5 each) with ring display DR12 (\$12)



TR12S (\$60) 12 silver plated rings (\$5 each)



TR12GD \$72 (With Display)

12 gold-plated rings (\$5 each) with ring display DR12 (\$12)



TR12G (\$60) 12 gold plated rings (\$5 each)



TR24D (\$144)

24 Tanvi Rings (\$5 each) with ring display DR24 (\$24)



TR24 (\$120)

24 Tanvi Rings (\$5 each)



Tanvi

Link bracelets with semiprecious stones (minimum order 2 each)



BL1551 \$12 Prehnite



BL1552 \$12 Amethyst



BL1553 \$12 Moonstone



BL1554 \$12 Black Onyx



BL1555 \$12 Labradorite



BL1556 \$12 Chalcedony



BL1557 \$12 Tigereye



BL1558 \$12 Lapis



BL1559 \$12 Turquoise



BL1560 \$12 Garnet



BL1561 \$12 Amazonite



BL1562 \$12 Rhodnite



TBL12D \$152 (With Display)

12 silver-plated link bracelets (\$12 each) with wooden ramp display DB-5 (\$8)



TBL12 \$144 (no display)

12 silver-plated link bracelets (\$12 each)



Engraved Metal Cuff Bracelets \$8 each (width 0.75") Silvertone, Copper and Brass



B431C



B432C



B433C



B434C



B434S



B435C



B436C



B437B



B437C



B437S



B438C



B438S



B439C



B440C



B441C



B442C



B444B



B444C



B444S



B445B



B445S



B446C



B447B



B447S



B448B



B448C



B448S



B449B



Engraved Metal Cuff Bracelets \$8 each (width 0.75") Silvertone, Copper and Brass



B449S



B450B



B451B



B452C



B453S



B454B



B749S



B750S



B751S



B752S



B753S



B754S



B755S



B756S



B757S



B758S



B781B



B782B



B783B



B784B



B785B



B786B



B787B



B788B



Prepack EMCUFF16 \$153
(Includes display)
Assortment of 16 cuffs (at \$8 each)
with a wooden display (\$25)



Prepack EMCUFF16R \$128
(No display)
Assortment of 16 cuffs (at \$8 each)



Engraved Metal Earrings \$6 each (1.5" x 1") minimum order 2 each



E419C



E420C



E421C



E422C



E423C



E424C



E425C



E426C



E427C



E428C



E429C



E429S



E430B



E435C



E436C



E437B



E437S



E437C



E438C



E453S



E441C



E442C



E444S



E445B



Engraved Metal Earrings \$6 each (1.5" x 1") minimum order 2 each



E445S



E446C



E447S



E447B



E448S



E448C



E449S



E450B



E451B



E454B



E755S



E759S



E785B



E786B



E787B



E788B



EMEB \$311

16 Cuffs (\$8 each) and 24 Earrings (\$6 each) and a wooden display DW43 (\$39)



EME32 \$227

32 Pairs of Earrings (\$6 each) a wooden display DW41 (\$35)



EME12 \$82

12 Pairs of Earrings (\$6 each) a wooden display DW27 (\$10)



EMCUFF12 \$108

Assortment of 12 cuffs (at \$8 each) and a wooden bar display DB12 (\$12)



Nature Inspired Pewter Collection

Necklaces made
with cotton strands,
18" long with 2"
extension.



Nature Inspired Pewter Collection minimum order 2 each



Nature Inspired Pewter Collection minimum order 2 each





N1202 AS-AC \$8

E1202 AS-AC \$5

N1202 S-AS \$8

E1202 S-AS \$5

N989 S-AS \$8

E989 S-AS \$5

N993 AS-AC \$8

E993 AS-AC \$5

N679 AS-AC \$8

E679 AS-AC \$5

N685 AS-AC \$8

E685 AS-AC \$5

N951 AS-AC \$8

E951 AS-AC \$5

N980 AS-AC \$8

E980 AS-AC \$5

N961 AS-AC \$8

E961 AS-AC \$5



Nature Inspired
Pewter Collection

N1250 \$8
E1250 \$5

N1251 \$8
E1251 \$5

N1252 \$8
E1252 \$5

N1253 \$8
E1253 \$5

N1254 \$8
E1254 \$5

N1255 \$8
E1255 \$5

N1256 \$8
E1256 \$5

N1257 \$8
E1257 \$5

N1258 \$8
E1258 \$5

Nature Inspired Pewter Collection minimum order 2 each

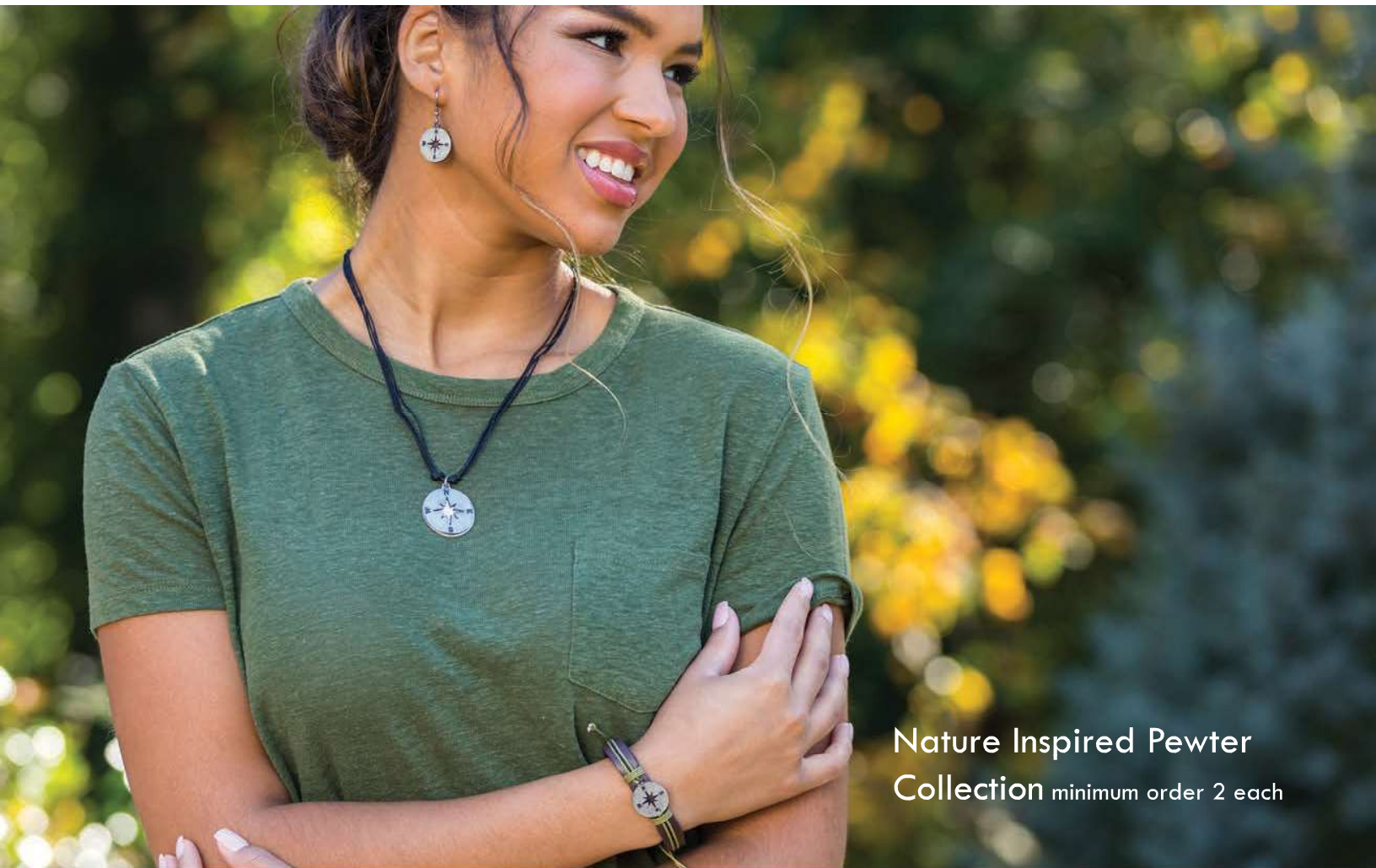


Nature Inspired Pewter Collection minimum order 2 each



Nature Inspired Pewter Collection minimum order 2 each





Nature Inspired Pewter
Collection minimum order 2 each



Nature Inspired Pewter Collection minimum order 2 each



Music Inspired Pewter Collection minimum order 2 each



Prepacks



PN2C2436 \$417
24 pewter necklaces at \$8 each and 36 earrings at \$5 each with wooden display spinner DW-42 (\$45). Two extra necklaces included to offset the cost of display



PN32 \$291
32 necklaces (\$8 each) with wooden display DW-41 (\$35). Two extra necklaces included to offset the cost of display



Floor Spinner
All in one prepack
FPNEB \$1669

Panel-1 108 pairs of earrings (\$5 each)
Panel-2 56 necklaces (\$8 each)
Panel-3 36 leather bracelets (\$6 each)
Panel-4 36 leather bracelets (\$6 each)
Wooden floor spinner \$249



PE48 (\$269)
48 pair earrings (\$5/pair) with a display DW-12 (\$29)



PE48R \$240
Refill prepack
48 Pairs (no display)



PE24 (\$145)
24 earrings (\$5) with display DME24 (\$25)



PE24R \$120
Refill prepack
24 Pairs (no display)



PE96 (\$519)
96 pairs of best-selling earrings (\$5/pair) and a double sided display DW-15 (\$39)



PE96R \$480
Refill prepack
96 Pairs (no display)



Adjustable Leather Bracelets \$6, minimum order 2 each



B609L7



B658L7



B661L7



B665L7



B670L7



B685L7



B872L7



B873L7



B874L7



B1253L7



B1254L7



B1255L7



B1256L7



B1257L7



B1258L7



B1259L7



B1260L7



B1262L7



B1263L7



B1264L7



B1832L7



B1270L7



B1271L7



B1272L7



Adjustable Leather Bracelets \$6, minimum order 2 each



B1267L7
6 12608 50911 5



B1278L7
6 12608 50917 7



B1279L7
6 12608 50920 7



B1280L7
6 12608 50923 8



B1281L7
6 12608 51097 5



B1282L7
6 12608 51098 2



B1284L7
6 12608 51100 2



B1285L7
6 12608 51101 9



B1294L7
6 12608 51105 7



B1296L7
6 12608 50887 3



B1297L7
6 12608 50890 3



B1298L7
6 12608 50893 4



B1299L7
6 12608 50896 5



B1300L7
6 12608 50899 6



B1301L7
6 12608 50902 3



B1302L7
6 12608 52015 8



B1303L7
6 12608 52016 5



B1305L7
6 12608 52017 2



B1306L7
6 12608 52018 9



B1307L7
6 12608 52019 6



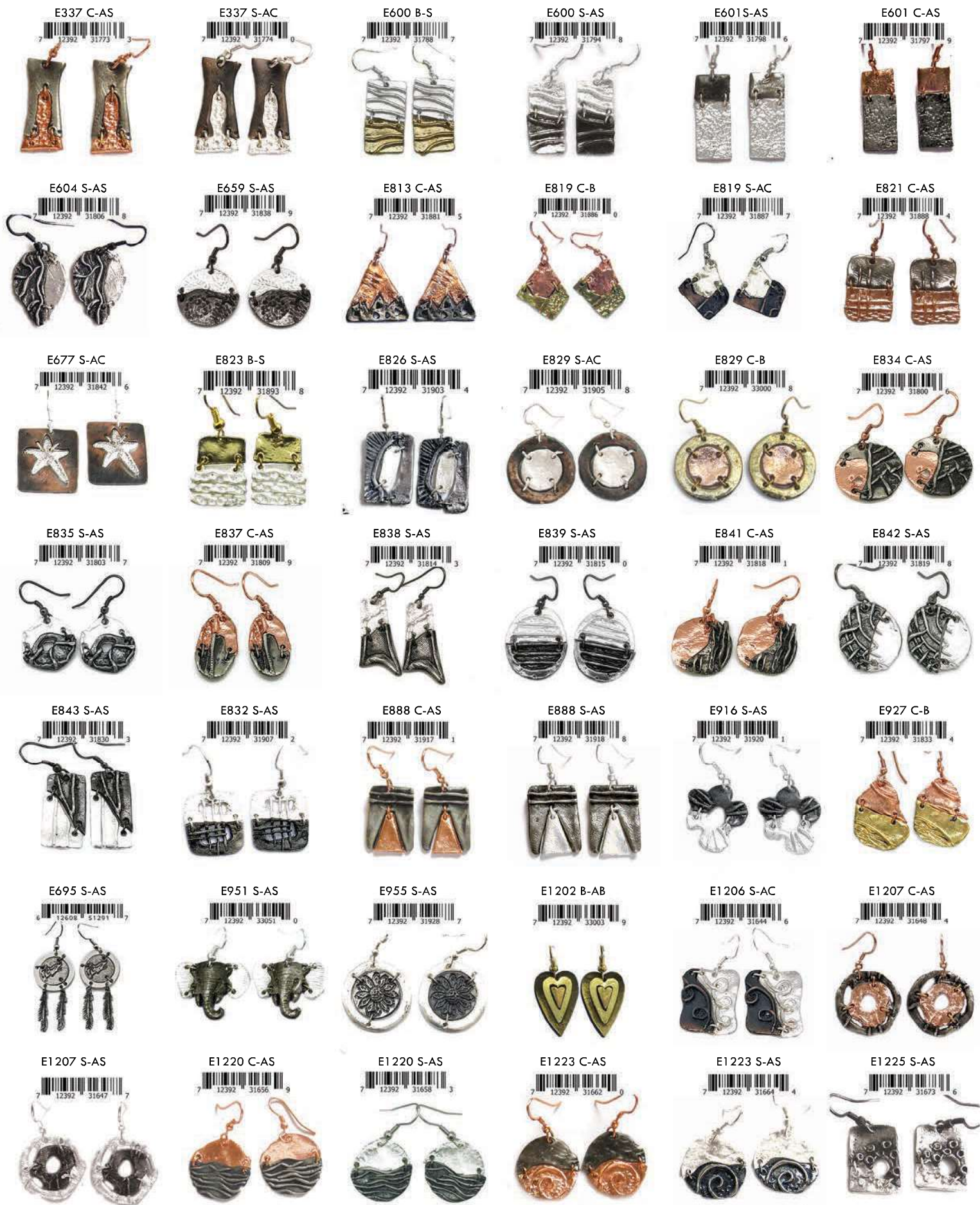
Prepack PBL16 \$111
Assortment of 16 leather bracelets (\$6 each) and a wooden display (\$15)



Prepack PBL24 \$179
Assortment of 24 leather bracelets (\$6 each) and a wooden display DW41A (\$35). Two free bracelets to offset the cost of display.



Pewter Earrings \$5 each pair (minimum purchase 2 per style)



Pewter Earrings with Color Enamel \$5 each pair (minimum purchase 2 per style)



Pewter Earrings with Color Enamel \$5 each pair (minimum purchase 2 per style)



Pewter Earrings with Color Enamel \$5 each pair (minimum purchase 2 per style)



Prepacks



CE24 \$145
24 Pairs (\$5 each) and metal display DME24 (\$25)



CE24R \$120

Refill prepack
24 pair earrings.
No Display



CE72 \$389
72 pairs of earrings (\$5) and display (\$29). 4 free earrings included to offset display cost



CE144 \$720
144 pairs of earrings (\$5) and FREE double sided display. \$39 saving.



CB24D \$203
24 color enamel bracelets (\$7 each) and display (DW41A - \$35)



Color Enamel Bracelets \$7, minimum order 2 each



MY HOME STATE



Selected State Icons - Necklaces \$8 (18" long with 2" extension) minimum order 6 each



Home State Jewelry - Necklaces \$8 (18" long with 2" extension) minimum order 6 each)



N70MO



N70MT



N70NV



N70NM



N71NM



N70NC



N70ND



N70OK



N70OR



N70SC



N70SD



N70TN



N71TN



N72TN



N70TX



N71TX



N70UT



N71UT



N70VT



N70VA



N70WA



N70WV



N70WI



N70WY



Home State Jewelry - Adjustable Cuff Bracelets \$8 (minimum order 6 each)



Home State Jewelry (Necklaces 16" + 2" extn \$8; Earrings \$5/pr (minimum order 6 each)



Home State Jewelry (Necklaces 16" + 2" extn \$8; Earrings \$5/pr (minimum order 6 each)



Home State Jewelry (Necklaces (16" + 2" extn) \$8 Earrings \$5
 minimum purchase 6 each



Pull-tie leather bracelets with adjustable length, \$6 each (minimum purchase 6)



Home State Leather Bracelets \$6 each (Minimum 6)

Alabama B800AL



Montana B800MT



Alaska B800AK



Nebraska B800NE



Arizona B800AZ



Nevada B800NV



Arkansas B800AR



New Hampshire B800NH



California B800CA



New Mexico B800NM



Colorado B800CO



New Jersey B800NJ



Connecticut B800CT



New York B800NY



Delaware B800DE



New York (long Island) B800NYLI



Florida B800FL



North Carolina B800NC



Georgia B800GA



North Dakota B800ND



Hawaii B800HI



Ohio B800OH



Idaho B800ID



Oklahoma B800OK



Illinois B800IL



Oregon B800OR



Indiana B800IN



Pennsylvania B800PA



Iowa B800IA



Puerto Rico B800PR



Kansas B800KS



South Carolina B800SC



Kentucky B800KY



South Dakota B800SD



Louisiana B800LA



Tennessee B800TN



Maine B800ME



Texas B800TX



Maryland B800MD



Utah B800UT



Massachusetts B800MA



Vermont B800VT



Michigan B800MI



Virginia B800VA



Michigan (upper) B800MIUP



Washington B800WA



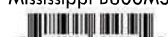
Minnesota B800MN



West Virginia B800WV



Mississippi B800MS



Wisconsin B800WI



Missouri B800MO



Wyoming B800WY



ZODIAC SIGN JEWELRY

Necklaces- \$5 (minimum purchase 4 each)



ZNE24D \$275
(Includes display)
24 zodiac necklaces and 24 earrings and wooden display DW41 (\$35)



ZNE24 \$240
(No display)
24 zodiac necklaces and 24 earrings



ZB24D \$179 (Includes display)
All twelve zodiac bracelets (2 each) and wooden display DW41A (\$35)



ZB24 \$144 (No display)
All twelve zodiac bracelets (2 each)



ZODIAC SIGN JEWELRY

Adjustable Leather Bracelets- \$6 (minimum purchase 4 each)



Earrings- \$5 (minimum purchase 4 each)



AADI

MEN'S COLLECTION

BRACELETS

(minimum order 2 each)



B8001 \$8



B8004 \$8



B8006 \$7



B8011 \$6



B8012 \$7



B8013 \$6



B8015 \$6



B8018 \$7



B8019 \$6



B8025 \$7



B8026 \$7



B8027 \$7



Bracelets (minimum order 2 each)



B8030 \$6
6 12608 50713 5



B8031 \$7
6 12608 50714 2



B8033 \$7
6 12608 50716 6



B8034 \$7
6 12608 50717 3



B8035 \$8
6 12608 50718 0



B8036 \$8
6 12608 50719 7



B8041 \$7
6 12608 52144 5



B8042 \$7
6 12608 52145 2



B8043 \$7
6 12608 52146 9



B8044 \$7
6 12608 52147 6



B8045 \$7
6 12608 52148 3



B8046 \$7
6 12608 52149 0



B8047 \$7
6 12608 52150 6



B8048 \$7
6 12608 52151 3



B8049 \$7
6 12608 52152 0



B8050 \$9
6 12608 52153 7



B8051 \$9
6 12608 52154 4



B8052 \$9
6 12608 52155 1



B8053 \$9
6 12608 52156 8



B8054 \$9
6 12608 52157 5



B8056 \$6
6 12608 52355 5



B8057 \$6
6 12608 52356 2



B8058 \$5
6 12608 52357 9



B8059 \$5
6 12608 52358 6

Bracelets (minimum order 2 each)



B8060 \$5



B8062 \$6



B8063 \$7



B8064 \$7



B8065 \$7



B8066 \$6



B8067 \$7



B8069 \$7



B8071 \$6



B8073 \$6



B8074 \$6



B8075 \$6



B8076 \$6



B8077 \$6



B8078 \$6



B8079 \$6



B8080 \$10



B8081 \$10



B8082 \$10



B8083 \$10



B8084 \$10



B8085 \$10



B8086 \$10



B8087 \$10



Bracelets (minimum order 2 each)



B8088 \$10



B8089 \$12



B8090 \$10



B8091 \$9



B8092 \$7



B8093 \$8



B8094 \$8



B8095 \$7



B8096 \$7



B8097 \$9



B8098 \$12



B8099 \$12



B8101 \$9



B8102 \$9



B8103 \$9



B8104 \$9



B8105 \$9



B8106 \$10



B8107 \$9



B8108 \$8



B8109 \$8



B8110 \$8



B8111 \$8



B8112 \$8



AADI

MEN'S COLLECTION

NECKLACES

(minimum order 2 each)



N8005 \$9



N8006 \$9



N8011 \$9



N8012 \$9



N8014 \$9



N8018 \$9



AADI NECKLACES (minimum order 2 each)



N8019 \$9
 7 12392 34882 9



N8022 \$9
 6 12608 50700 5



N8023 \$9
 6 12608 50701 2



N8025 \$9
 5 12608 50703 6



N8027 \$9
 6 12608 50705 0



N8030 \$9
 6 12608 50708 1



N8031 \$9
 6 12608 50709 8



N8032 \$9
 0 612608 526242



N8033 \$9
 0 612608 526259



N8034 \$9
 0 612608 526266



N8035 \$9
 0 612608 526273



N8036 \$9
 0 612608 526280

AADI NECKLACES (minimum order 2 each)



N8037 \$9



N8038 \$9



N8039 \$9



N8040 \$9



N8041 \$9



N8042 \$9



N8043 \$9



N8044 \$9



N8045 \$9



Prepacks



Necklaces Prepack
ADN16 \$163
16 Necklaces \$9 each with display
DTB12 (\$19)



ADN16R \$144
16 Necklaces \$9 each, no display



Bracelets Prepack

ADB24D \$215
(24 Bracelets with display)
6 for \$6, 6 for \$7, 6 for \$8, 6 for \$10
Display (DTB14-4) for \$29



ADB24 \$186
(24 Bracelets no display)
6 for \$6, 6 for \$7, 6 for \$8, 6 for \$10





Chippa

The Art of Block-Printing on Cotton

Anju has partnered with highly skilled artisans that work with hand block-printing a technique that has been passed down from generation to generation. The word "Chippa" means "to print", and the cotton used for our products is printed by one of the oldest block-printing families in Jaipur, India. This ancient form of fabric printing has been in India since 12th Century and has become almost forgotten due to significant advances in modern day screen printing.

The beautiful patterns on the fabrics are created using wooden blocks. These blocks are hand-carved using basic tools and manual drawings. Once the blocks are ready, they are dipped in natural dyes and the color patterns are transferred onto organic cotton. Each design involves multiple blocks and dyes, which have to be carefully aligned to create a beautiful and colorful final product.

By sourcing fabrics made using this nearly extinct technique, we are able to provide support for these skilled artisans and doing our part in keeping this wonderful tradition alive.



Light weight and ultra-soft cotton, featuring traditional art of hand block printing using natural eco-friendly pigments and dyes.



Block-Printed Hair Accessories



Small Hair Scrunchies
 HA101-3PK \$9 (pack of 3)
 assorted colors
 minimum order - 4 packs



Medium Hair Scrunchies
 HA102-3PK \$12 (pack of 3)
 assorted colors
 minimum order - 4 packs



Block-Printed Hair Accessories

Head Bands



Cotton Elastic Headbands
HA105 \$7 each
assorted colors
minimum order 6 pieces



Prepacks



Set of 12 Headbands
(HA105-12D) \$106
\$7 each, assorted colors and tall
T-bar display ((DTB18 \$22)



(HA101-24D) \$87
24 small scrunchies
\$3 each, and display
(DB6 \$15)



(HA102-18D) \$87
18 medium scrunchies
\$4 each, and display
(DB6 \$15)



Hand-Printed
100% Cotton

Scarves

Printed by hand in
Rajasthan, India by
traditional craftsmen
using hand-carved
teak blocks

Size - 22" x 72"
Minimum order 2 each



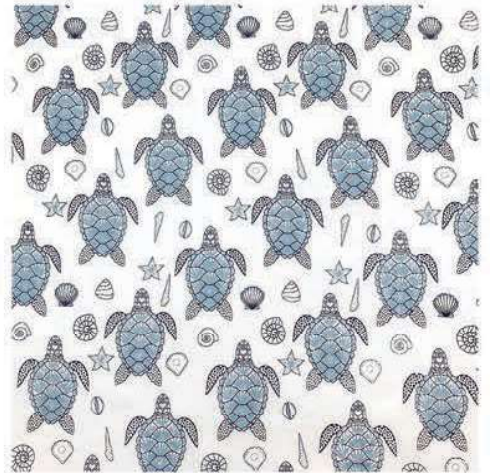
Printed on pre-shrunk, light weight and ultra-soft cotton. Features traditional art of hand block printing using organic eco-friendly pigments and dyes. A variety of blocks for different colors are used. The outcome is a beautiful product made by artisans of India




S101 \$12 



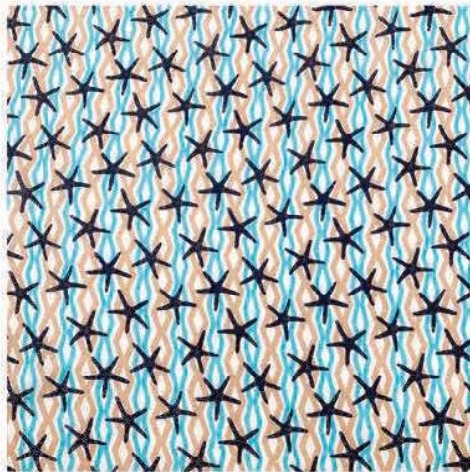
S102 \$12 



S103 \$12 




S104 \$12 



S105 \$12 



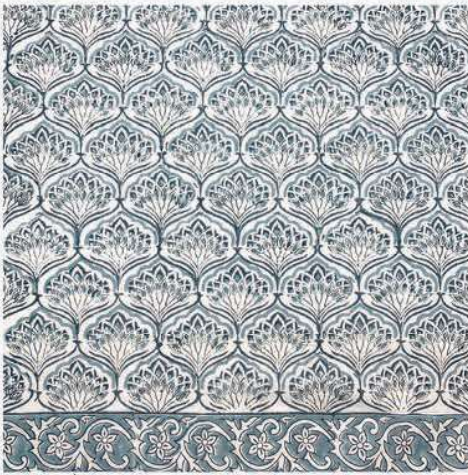
S106 \$12 

Hand-Printed
100% Cotton
Scarves

Size - 22" x 72"
Minimum order 2 each



These scarves are made with light weight and extremely soft cotton, featuring traditional art of hand printing using intricately carved wooden blocks. They are printed with organic, eco-friendly pigments and dyes. Cotton laces are added on edges for finish.



S107 \$12 



S108 \$12 



S109 \$12 



S110 \$12 



S111 \$12 



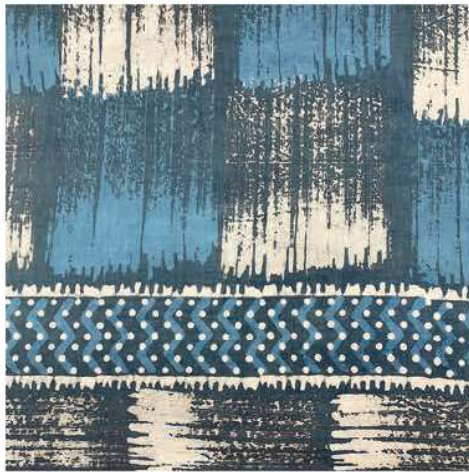
S112 \$12 

Hand-Printed
100% Cotton
Scarves



Printed on pre-shrunk, light weight and ultra-soft cotton. Features traditional art of hand block printing from India using organic eco-friendly colors, pigments and dyes.

Size - 22" x 72"
Minimum order 2 each



S113 \$12 



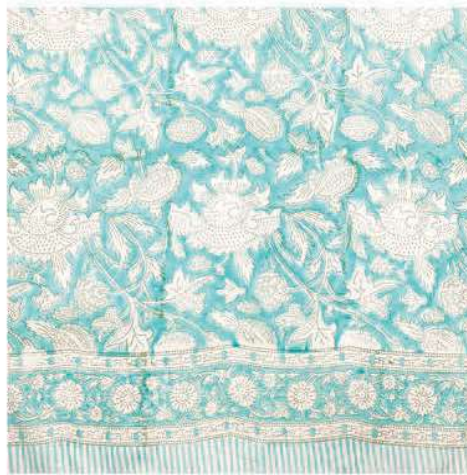
S114 \$12 



S115 \$12 



S116 \$12 



S118 \$12 



S119 \$12 

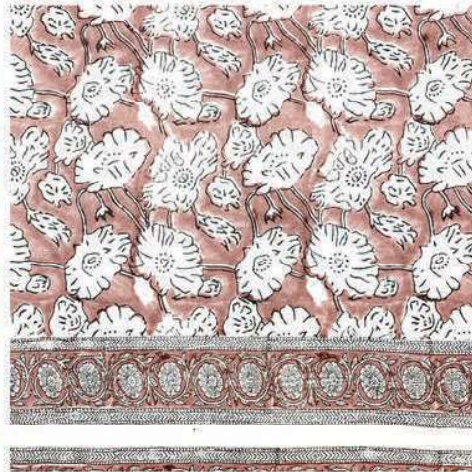
Hand-Printed
100% Cotton
Scarves

Size - 22" x 72"
Minimum order 2 each

These scarves are made with light weight and extremely soft cotton, featuring traditional art of hand printing using intricately carved wooden blocks. They are printed with organic, eco-friendly pigments and dyes. Cotton laces are added on edges for finish.



S120 \$12 



S121 \$12 



S122 \$12 



S123 \$12 



S124 \$12 



S125 \$12 



Prepacks

Buy Prepacks and Save Big !



12 pre-assorted scarves
12 for \$120 (\$10 each)

Pre-assorted scarves include best assortment
of unique colors and patterns.



SCARF12 \$120



12 pre-assorted bandanas
12 for \$54 (\$4.50 each)

Pre-assorted bandanas include best assortment
of unique colors and patterns.



BANDANA12 \$54



Hand Block-Printed
100% Cotton

Bandanas

Size - 21" x 21"
Minimum order 2 each

Light weight and ultra-soft cotton,
featuring traditional art of hand
block printing using eco-friendly
pigments and dyes.



SB101 \$5 



SB102 \$5 



SB103 \$5 



SB104 \$5 



SB105 \$5 



SB106 \$5 

Bandanas Hand-Printed, 100% Cotton 21" x 21" Minimum order 2 each




SB107 \$5 



SB108 \$5 



SB109 \$5 



SB110 \$5 



SB111 \$5 



SB112 \$5 



SB113 \$5 



SB114 \$5 



SB115 \$5 



SB116 \$5 



SB117 \$5 



SB118 \$5 

Hand-Printed
100% Cotton

Bandanas

Light weight and ultra-soft cotton,
featuring traditional art of hand
block printing using eco-friendly
pigments and dyes.

Size - 21" x 21"
Minimum order 2 each



SB119 \$5 



SB120 \$5 



SB121 \$5 



SB122 \$5 



SB123 \$5 



SB124 \$5 

Chippa Block-Printed Cotton

Serenity

Minimum 2 each



Large Duffel Bag \$28
H314D1

11" x 20" x 8"



6 12608 52371 5



ID Pouch \$6
H314iD

5.5" x 3.5"



6 12608 52383 8



Personal Accessory Bag \$6
H314SP1

6" x 2.5" x 3"



6 12608 52376 0

XL Duffel Bag \$32
H314D3

13.5" x 21" x 9"



6 12608 52370 8



Medium Travel Kit \$8
H314TR3

6" x 2.5" x 3"



6 12608 52381 4

Large Travel Kit \$9
H314TR2

5.5" x 10.5" x 5"



6 12608 52380 7



Shoulder Bag \$24
H314T2

17" x 12" x 7"



6 12608 52365 4



Shopper Tote \$22
H314T1

17x14x6.5"



6 12608 52364 7



Jumbo Duffel Bag \$36
H314D4

15" x 25" x 11"



6 12608 52386 9

Chippa Block-Printed Cotton

Serenity

Minimum 2 each



Folding Travel Kit \$22
H314TR5

Open: 28.5" x 11.5"
Closed: 10" x 11.5"



Backpack \$28
H314B1

16" x 13.5" x 6"



Laptop Bag \$16
H314L1

10.5" x 14"



Hipster Bag \$15
H314H1

7.5" x 5.5"



Messenger Bag \$18
H314M2

6.5" x 9.5"



Small Cosmetics Case \$15
H314TR6

8" x 5" x 4"



Large Cosmetics Case \$19
H314TR7

10" x 7" x 5"



Travel Bag \$14
H314TR1

8" x 13" x 5.25"



Chippa Block-Printed Cotton

Botanical Blue

Minimum 2 each



ID Pouch \$6
H312iD
5.5" x 3.5"



Large Duffel Bag
H312D1 \$28
11" x 20" x 8"



Personal Accessory Bag \$6
H312SP1



XL Duffel Bag \$32
H312D3

13.5" x 21" x 9"



Large Travel Kit \$9
H312TR2

5.5" x 10.5" x 5"



Medium Travel Kit \$8
H312TR3



Shoulder Bag \$24
H312T2

17" x 12" x 7"



Shopper Tote \$22
H312T1

17x14x6.5"



Jumbo Duffel Bag \$36
H312D4

15" x 25" x 11"



Chippa Block-Printed Cotton

Botanical Blue

Minimum 2 each



Backpack



Folding Travel Kit \$22
H312TR5

Open: 28.5" x 11.5"
Closed: 10" x 11.5"



Backpack \$28
H312B1

16" x 13.5" x 6"



Laptop Bag \$16
H312L1

10.5" x 14"



Hipster Bag \$15
H312H1

7.5" x 5.5"



Messenger Bag \$18
H312M2

6.5" x 9.5"



Small Cosmetics Case \$15
H312TR6

8" x 5" x 4"



Large Cosmetics Case \$19
H312TR7

10" x 7" x 5"



Travel Bag \$14
H312TR1

8" x 13" x 5.25"



Chippa Block-Printed Cotton

Indigo Palms

Minimum 2 each



ID Pouch \$6
H313iD
5.5" x 3.5"



Large Duffel Bag \$28
H313D1

11" x 20" x 8"



Personal Accessory Bag \$6
H313SP1

6" x 2.5" x 3"



XL Duffel Bag \$32
H313D3

13.5" x 21" x 9"



Large Travel Kit \$9
H313TR2

5.5" x 10.5" x 5"



Medium Travel Kit \$8
H313TR3

6" x 2.5" x 3"



Shoulder Bag \$24
H313T2

17" x 12" x 7"



Shopper Tote \$22
H313T1

17x14x6.5"



Jumbo Duffel Bag \$36
H313D4

15" x 25" x 11"



Chippa Block-Printed Cotton

Indigo Palms

Minimum 2 each



Folding Travel Kit \$22
H313TR5

Open: 28.5" x 11.5"
Closed: 10" x 11.5"



Backpack \$28
H313B1

16" x 13.5" x 6"



Laptop Bag \$16
H313L1

10.5" x 14"



Hipster Bag \$15
H313H1

7.5" x 5.5"



Messenger Bag \$18
H313M2

6.5" x 9.5"



Small Cosmetics Case \$15
H313TR6

8" x 5" x 4"



Large Cosmetics Case \$19
H313TR7

10" x 7" x 5"



Travel Bag \$14
H313TR1

8" x 13" x 5.25"



Chippa Block-Printed Cotton

Tranquility

Minimum 2 each



ID Pouch \$6
H309iD
5.5" x 3.5"



Large Duffle Bag
H309D1 \$28
11" x 20" x 8"



Personal Accessory Bag \$6
H309SP1



XL Duffle Bag \$32
H309D3



Large Travel Kit \$9
H309TR2

5.5" x 10.5" x 5"



Medium Travel Kit \$8
H309TR3

6" x 2.5" x 3"



Shoulder Bag \$24
H309T2

17" x 12" x 7"



Shopper Tote \$22
H309T1

17x14x6.5"



Jumbo Duffle Bag \$36
H309D4

15" x 25" x 11"



Chippa Block-Printed Cotton

Tranquility

Minimum 2 each



Shopper Tote



Folding Travel Kit \$22
H309TR5

Open: 28.5" x 11.5"
Closed: 10" x 11.5"



Backpack \$28
H309B1

16" x 13.5" x 6"



Laptop Bag \$16
H309L1

10.5" x 14"



Hipster Bag \$15
H309H1

7.5" x 5.5"



Messenger Bag \$18
H309M2

6.5" x 9.5"



Small Cosmetics Case \$15
H309TR6

8" x 5" x 4"



Large Cosmetics Case \$19
H309TR7

10" x 7" x 5"



Travel Bag \$14
H309TR1

8" x 13" x 5.25"



Chippa Block-Printed Cotton

Peony Bloom

Minimum 2 each



XL Duffel Bag



ID Pouch \$6
H302iD
5.5x3.5"



Personal Accessory Bag \$6
H302SP1
6x2.5x3"



Large Duffel Bag \$28

H302D1
11x20x8"



XL Duffel Bag \$32

H302D3
13.25x21x9"



Large Travel Kit \$9

H313TR2
5.5x10.5x5"



Medium Travel Kit \$8

H302TR3
6x2.5x3"



Shoulder Bag \$24

H302T2
17x12x7"



Shopper Tote \$22

H302T1
17x14x6.5"



Jumbo Duffel Bag \$36

H302D4
15" x 25" x 11"



Chippa Block-Printed Cotton

Peony Bloom

Minimum 2 each



Folding Travel Kit \$22
H302TR5

Open: 28.5x11.5"
Closed: 10x11.5"



Backpack \$28
H302B1

16x13.5x6"



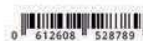
Laptop Bag \$16
H302L1

10.5x14"



Small Cosmetics Case \$15
H302TR6

8" x 5" x 4"



Hipster Bag \$15
H302H1

7.5x5.5"



Messenger Bag \$18
H302M2

6.5x9.5"



Large Cosmetics Case \$19
H302TR7

10" x 7" x 5"



Travel Bag \$14
H302TR1

8x13x5.25"



Block-Printed Cotton Accessories

Colorful • Sustainable • Handcrafted

Drawstring Bags



Draw-string pouches (6" x 5")
DS12 \$12
\$1 each, 12-pack assorted colors



Flat Zipper Pouches



Small flat pouches (6" x 5")
Pack of 12 (HSP3-12) \$48
\$4 each, assorted colors

Medium flat pouches (7" x 5")
pack of 12 (HSP4-12) \$60
\$5 each, assorted colors

Set of 12 ID Pouches
(HID1) \$72
\$6 each, assorted colors



Face Masks



MASK12 \$36

(pack of 12, assorted colors)



Individual masks packed in single
polybags (no hangtag)
\$3 each, pack of 12 for \$36



Fitted with elastic loops. One size fits most adults. Non medical grade. Comfortable, washable and reusable.

Jewelry Displays made with solid wood. The back has a detachable slide for vertical support. Packs flat for easy transport





DTB18 \$22
T-bar
(20.5" x 14" x 6.5")



DTB12 \$19
T-bar
(15" x 14" x 6.5")



DTB4 \$15
T-bar
(6.5" x 14" x 6.5")



DTB18WH \$22
T-bar
(20.5" x 14" x 6.5")



DTB12WH \$19
T-bar
(15" x 14" x 6.5")



DTB4WH \$15
T-bar
(6.5" x 14" x 6.5")



Floor Units



DTB18-4 \$35
Dual T-bar
(20.5" x 14" x 6.5")



DTB14-4 \$29
Dual T-bar
(15" x 14" x 6.5")



Natural wood



DWF-1 \$249

Floor display with storage cabinet.
Can be customized to fit necklaces, earrings and bracelets.
(12" x 12" x 66")



White-wash wood



DWF-1WH \$249

Floor display with storage cabinet.
Can be customized to fit necklaces, earrings and bracelets.
(12" x 12" x 66")



DTB18-4WH \$35
Dual T-bar
(20.5" x 14" x 6.5")



DTB14-4WH \$29
Dual T-bar
(15" x 14" x 6.5")





alternating 2 and 3 hook panels

DW42 \$45
Six-sided spinner display
7.5" x 7.5" x 15"



2 hooks on each panel

DW42A \$45
Six-sided spinner display
7.5" x 7.5" x 15"



2 hooks on each panel

DW42AWH \$45
Six-sided spinner display
7.5" x 7.5" x 15"



DW45 \$39
Six-sided spinner display
6" x 6" x 14"



DW45WH \$39
Six-sided spinner display
6" x 6" x 14"



DW44 \$39
Four-sided spinner display
Three hooks on each side
6" x 6" x 16.75"



DW44WH \$39
Four-sided spinner display
Three hooks on each side
6" x 6" x 16.75"



DW41A \$35
Four-sided spinner display
Three hooks on each side.
6" x 6" x 14"



DW41 \$35
Four-sided spinner display.
Two hooks on each side.
6" x 6" x 14"



DW41WH \$35
Four-sided spinner display.
Two hooks on each side.
6" x 6" x 14"



DW51 \$69
Four-sided display. Number of hooks on each panel as requested
(21" x 8" x 8")



DW51WH \$69
Four-sided display. Number of hooks on each panel as requested
(21" x 8" x 8")



DW52 \$69
Four-sided display. Two panels with 3 hooks for necklaces, one panel with 16 bracelet slots and one panel with 6 hooks for earring cards.
(21" x 8" x 8")



DW52WH \$69
Four-sided display. Two panels with 3 hooks for necklaces, one panel with 16 bracelet slots and one panel with 6 hooks for earring cards.
(21" x 8" x 8")





Front

Back

Two-sided Display DW-5 \$29
3 hooks on one side, 6 hooks on reverse side
(18" x 9" x 6")



DW-12 \$29
Single sided display with 12
hooks (20" x 9" x 6")



DW-13 \$29
Single sided display with 6
hooks for large earring cards
(17.5" x 7" x 5")



DW-14 \$39
Single sided display with 6 hook
and two bracelet bars
(20" x 9" x 6")



DW-15 \$39
Double sided display with 12
hooks on each side for small
earring cards (20" x 9" x 6")



DW-16 \$29
Double sided display with 6
hooks for large earrings cards
(17.5" x 7" x 6")



DW-19 \$25
Double sided display with 3
hooks on each side
(14" x 7" x 6")



DW27 \$10
Slotted wooden display
for necklace or earring
cards 4" x 9.5"



DW27WH \$10
Slotted wooden display (white-wash finish)
for necklace or earring cards 4" x 9.5"



DWT20 \$29
20 sections
18" x 8.5" x 3.25"



**Displays for narrow
cuff bracelets**



DWT16 \$25
16 sections
15" x 8.5" x 3.25"



DWT40 \$39
40 sections, double sided spinner
19" x 7.5" x 5"



DR12 \$12
Wooden Ring Display
8.25" x 3.25" x 2.5"



DR1 \$3
Single Ring Display
2" x 2" x 2"



DR24 \$24
Display for 24 Rings
8.5" x 6.25" x 3.25"



DR12WH \$12
Wooden Ring Display (White)
8.25" x 3.25" x 2.5"



DR1WH \$3
Single Ring Display
2" x 2" x 2"



DR24WH \$24
Display for 24 Rings
8.5" x 6.25" x 3.25"





DW-20 \$22
Tall T-Bar Wooden
Display
21.5" x 14" x 5"



DW-22 \$19
T-bar wooden display
14" x 14" x 5"



DM1 \$25
Adjustable height T bar
display for necklaces
13"-24" x 12" x 4.25"



DM2 \$19
Adjustable height T bar
display for bracelets
5"-8" x 12" x 4.25"



DW43 \$39
Wooden display for ear-
rings and cuff bracelets
22.5" x 9.5" x 4.25"



DB-6 \$15
Wooden Display for bracelets
or hair scrunchies
14.5" x 4.75" x 4.75"



9" long cushions for bracelets



DBLONG \$5



DBLONG-BK \$5 (Black)



EAS-1 \$4
Wire easle for
wooden trays
8" tall x 3.75" wide



DB-5 \$8
Wooden bracelet ramp
9" x 5.25" x 2.75"



Economy Burlap Cushions 3" x 3"



DB-2 BK \$2



DB-2 \$2



DW-T1 \$12
12 Compartment wooden tray
14" x 10.5" x 2.75"



DB7BK \$12 Slotted burlap
bangle display- 4.5" x 9.25" x 1.5"



DB8BK \$19 Slotted burlap
bangle display- 4.5" x 15.5" x 1.5"



DB7 \$12 Slotted burlap
bangle display- 4.5" x 9.25" x 1.5"



DB8 \$19 Slotted burlap
bangle display- 4.5" x 15.5" x 1.5"



DW-T1B \$36
12 Compartment wooden tray
and 12 black burlap cushions
14" x 10.5" x 2.75"



DW-T1N \$36
12 Compartment wooden tray
and 12 natural burlap cushions
14" x 10.5" x 2.75"



D-1L
\$4.00



D-1B
\$4.00



Economy necklace easel displays
Natural or black burlap.
4" wide x 8.5" tall



D-1BR
\$6.00



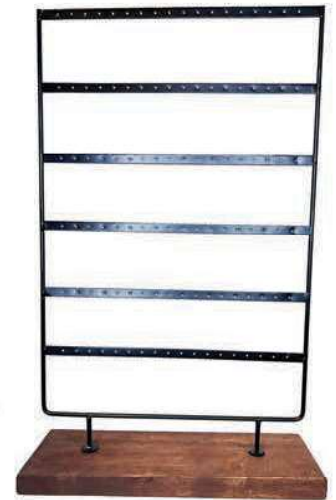
D-1WH
\$6.00



Economy necklace wood displays
Natural brown or whitewash
4" wide x 8.5" tall



DME24 \$25
Earring display for 24 pairs
14.5" x 8.75" x 4.25"



DME36 \$35
Earring display for 36 pairs
20.5" x 12.75" x 4.25"



DE-4M \$4
6" tall



DE-4L \$5
7.5" tall



DE-2M \$3
6" tall



DE-2L \$4
7.5" tall



DME2 \$3
6" tall



DME8 \$12
7.5" x 5.5" x 3.5"



DME4 \$8
4.5" x 5.5" x 3.5"



DN-2N
Medium
\$20



8.5"W x 5"D x 11"H



DN-3N
Tall
\$24



9"W x 5"D x 12"H



DN-1N
Small
\$16



8"W x 4.5"D x 9"H

Paper Twine Mannequin Displays. Paper sculpted and wrapped with woven natural fiber. Available in three sizes in natural and black colors



DN-1B
Small
\$16



8"W x 4.5"D x 9"H



DN-3B
Tall
\$24



9"W x 5"D x 12"H



DN-2B
Medium
\$20



8.5" W x 5"D x 11"H

Cuff Bracelet Displays

These innovative retail displays make it super easy to keep cuff bracelets neatly organized and displayed.



DB12 \$12
Wooden display for cuff bracelets
12.5" x 4" x 3"



DB16 \$19
2-tier wooden display for cuff bracelets
9.5" x 4" x 3"



DB24 \$29
3-tier wooden display for cuff bracelets
9.5" x 8.5" x 6"



DB32 \$39
4-tier wooden display for cuff bracelets
9.5" x 11" x 8"



Reusable Tote Bags

100% Cotton • Washable • Reusable

These are 100% cotton screen-printed spacious bags. Large straps allow the bag to be easily worn over the shoulder. Soft cotton construction allows it to be rolled in a small bundle. Designed to hold heavy loads comfortably. Can be washed and reused multiple times.

Environment friendly alternative to plastic bags!



\$6.00 each

Sold as an assortment of 20 with a free retail display



EB20 \$120

20 mixed eco-bags and free retail display box



Totes for Textbooks



1 Bag = 1 Textbook.

Anju is donating one textbook to a school going child in India for every reusable eco-bag that we sell. The more bags you buy, more books we can provide for these children who are often not able to afford them even though the school fees may be subsidized. We are working directly with schools in India and raising money to provide these much needed textbooks to children. This is one of several charity initiatives Anju is involved in besides working with artisan families.



GA DESIGNS INC.
75 JOHN PORTMAN BLVD. STE 7E-108
ATLANTA GA 30303
WWW.ANJUJEWELRY.COM
PH: 404.221.0707
FAX: 404.551.5240

REPRESENTED BY

Link2Sales

AL, FL, GA, KY, MS, NC, SC, TN

The Atlanta Gift Mart
40 John Portman Blvd NW, Suite 1600
Atlanta, GA 30303
866-303-5465
www.link2sales.com

Cathy & Co

TX, OK, LA, AR, IA, KS, MO, NE

1600 Dallas Trade Mart
(800) 763-8690
www.cathyandcoinc.com

Terry Moore & Associates

CO, UT, WY, MT, ID

9101 Harlan Street Suite 130
Westminster CO 80031
800-274-8444
www.tmaonline.com

TMA Link (Don Mar & Associates)

DE, MD, NJ, NY, PA, VA, WV, DC

64 Maine Trail
Medford, NJ 08055
1-609-654-8853
www.donmarsales.com

The Northern Link

MA, VT, NH, RI, CT, ME

(860) 265-3323
www.thenorthernlink.com

DNA

IL, IN, MI, MN, ND, SD, WI

Midwest Market Exchange
2400 E. Devon Ave.
Suite DNA #184
Des Plaines, IL 60018

Minneapolis Gift Mart
10301 Bren Road West
#390 Orange Gallery
Minnetonka, MN 55343
800-879-8588
www.dnasales.com

Sales Producers Inc

CA, NV, HI, AZ

World Market Center, Las Vegas
Showroom- 1044 Building C
Las Vegas NV 89106
800.346.9613
www.salesproducersinc.com

Creative Endeavors Inc

WA, OR, AK

Fox Island, WA 98333
206-930-6649
www.creativeendeavorsinc.com

G J Sales Inc.

OH

(330) 667-2698
www.gjsalesinc.com

Darlene Mills

NM

505-250-8044
roadrepmills@yahoo.com

MAIN SHOWROOM AT AMERICASMART
OPEN M-F 9-5:30 AND ON WEEKENDS DURING SHOWS
75 JOHN PORTMAN BLVD, SUITE 7E-108 ATLANTA GA 30303