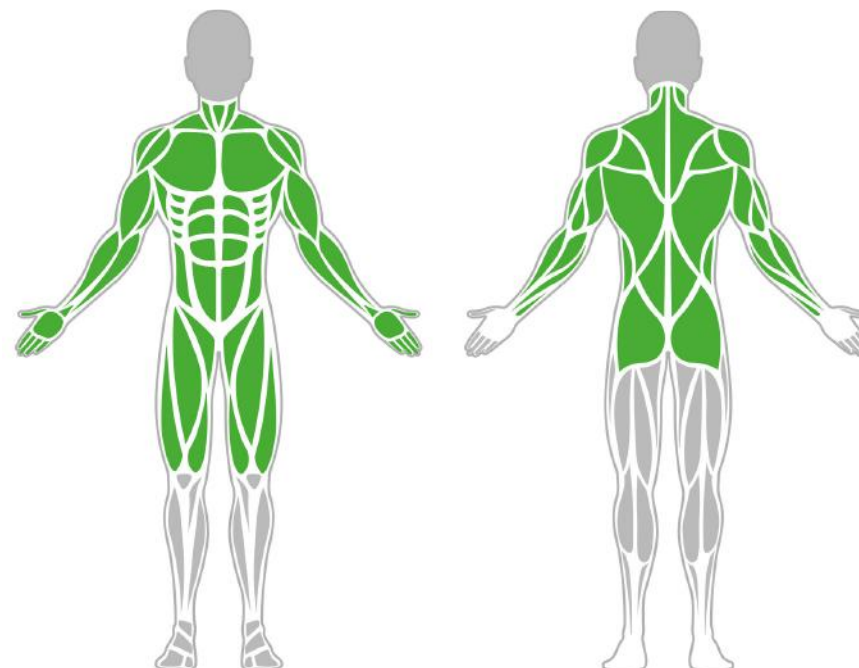




beststrongworld beststrongworld usa.beststrong.com usa@beststrong.com



## Muscle Groups Focus



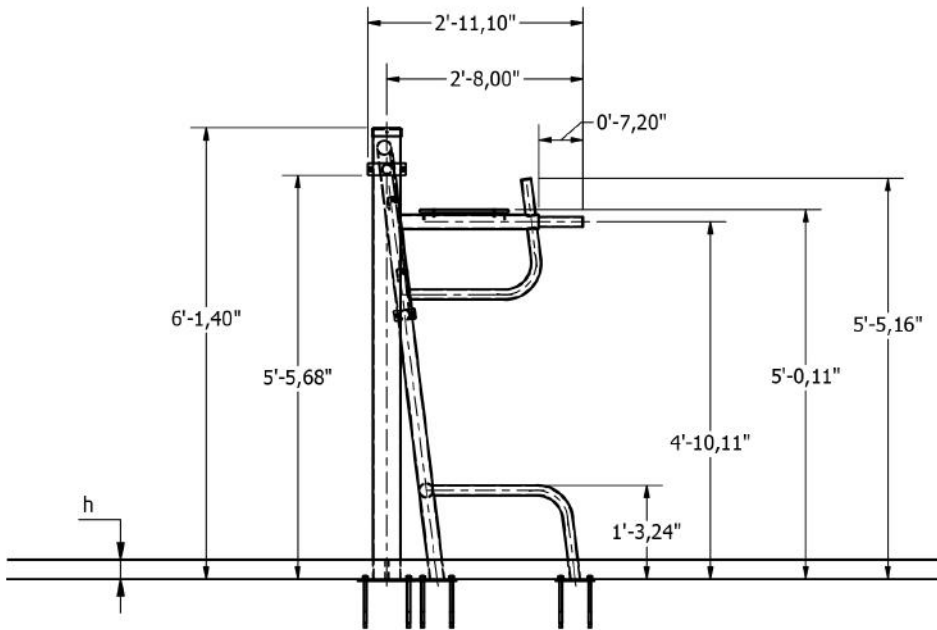
### Double Multifunctional Trainer

The double multifunctional trainer is an extremely versatile training tool that allows two people to work out at the same time. It can be used for push-ups, leg lifts and knee lifts, and the tabs at the foot of the machine can be used for both easy and difficult push-ups, and can be used by two people at the same time. It's this versatility that makes the double multifunctional trainer the perfect choice for those looking for a complex outdoor workout tool for the home.

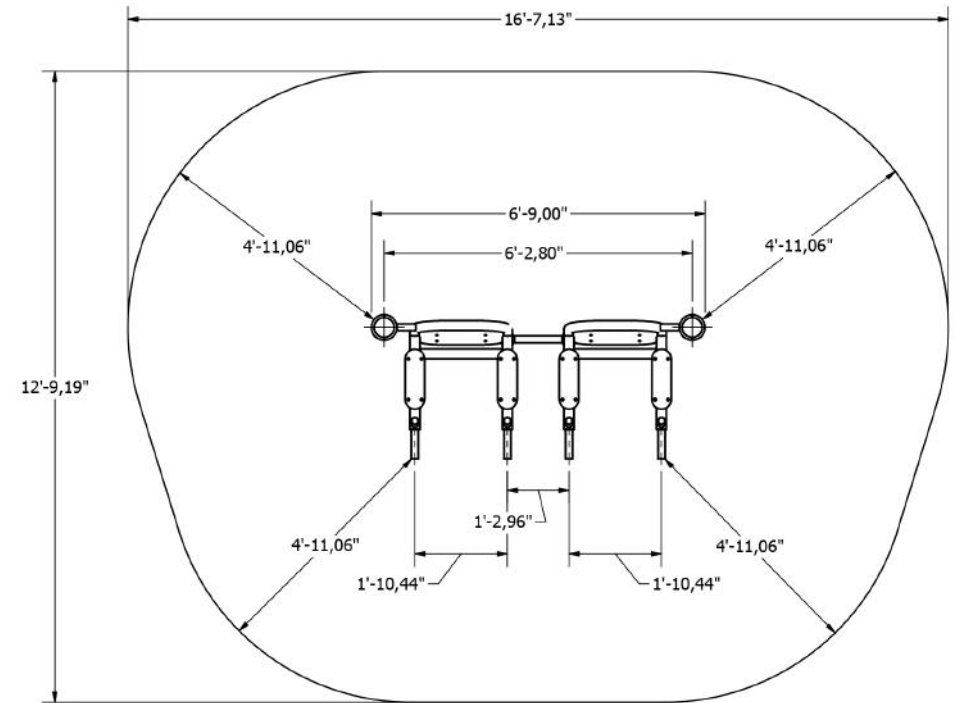
### Attributes

Product code	1-1-044
Certificate	EN 16630, ASTM F3101
Age group	14 + years
Capacity	2 people
Max. weight load	218.26 lbs
Type	Fitness
Difficulty level	Medium

## Side View



## Plan View



### Installation information

Number of installers (concrete)	At least 2 people
Total installation time (concrete)	75-130 min.
Number of installers (equipment)	At least 2 people
Total installation time (equipment)	30-60 min.
Excavation volume	45,91 ft <sup>3</sup>
Concrete volume	45,91 ft <sup>3</sup>
Size of the base structure	59.6 x 98.43 x 13.78 „
Anchoring options	In-ground or surface
In combined structures, the volume of concrete required varies.	

### Technical specification

Safety surface area
Net weight
Material
Critic fall height
Color options

For more color options, discuss with your sales representative.

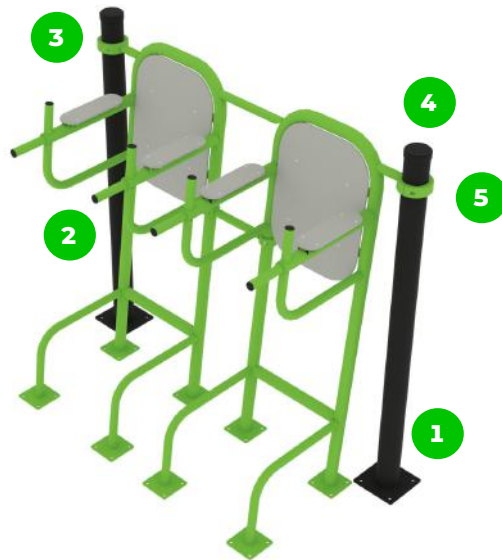
Around 4.92 ft radius
Net weight
Material
53.94"



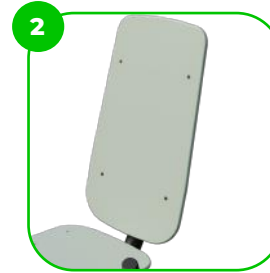
### Warranty

Structure	25 years
Steel	15 years
Paint	2 years
Plastic	5-10 years
Rubber	1-3 years
Moving parts	2 years
Detailed information in the warranty document	

# Material specification



The element is made of high quality S235 steel, which has been cleaned via sandblasting. A corrosion resistant powder coating finish is then applied. Also available with galvanized surface for even greater protection and longevity!



The seats and backrests are made of strong HDPE material. Which is fully heat, moisture and UV resistant.



The connecting elements are fastened with vandal-proof stainless steel screws and nuts.



The ends of the bars and posts are sealed with injection-moulded plastic caps.



The clamp system allows for easy assembly and extreme stability.

# BESTSTRONG

 [beststrongworld](#)  [beststrongworld](#)  [usa.beststrong.com](#)  [usa@beststrong.com](#)



Sport and fitness products are compliant with the EN16630 and ASTM F3101 Standards.