

Kitchen Inspiration

Discover RK-Tec, the Unique & Exciting Approach to Kitchen Design

Why involve a

Kitchen Designer

In your project

Your Home
Three Real Kitchens

Design

Products

Management

Project Advice from

The Kitchen Professionals



COOKING PASSION SINCE 1877



THE WOW FACTOR EVERYBODY WANTS

With freedom from a conventional wall or island hood, our Venting Hob allows you to reclaim your space in the kitchen. Offering a cooking surface with a powerful, built-in extraction mechanism, the NEFF Venting Hob is set to create the tasteful and modern kitchen that you've always dreamt of.

neff-home.com/uk

Introduction

Welcome to Kitchen Inspiration

*W*hat inspired 10 leading kitchen brands to come together (more than a decade ago) to promote the importance of good design? The answer is simple and led to the creation of RK-Tec.

So what is RK-Tec? RK-Tec stands for Revolutionary Kitchen Techniques.

The RK-Tec participants are leaders in their field and together encompass all the many elements required of a kitchen; furniture, appliances, sinks, taps, worksurfaces, lighting, components, and internal management systems. Each of them bring their own speciality to the RK-Tec team and offer the very latest in high performing products to ensure a kitchen truly fulfils both its aesthetic and functional requirements.

From all of the team at RK-Tec

Enjoy

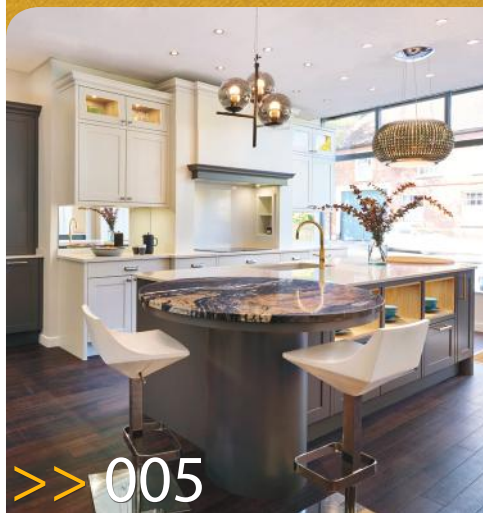
Providing new and exciting products is a vital element, but RK-Tec understand it's the amalgamation of all their many individual components that create the bespoke kitchens which stand out from the crowd.

Over the past 12 years the RK-Tec members have actively engaged with 'Kitchen Specialists' (a network of creative kitchen designers) to explain the variety of their products, how they should be used and built into the design of a client's new kitchen.

The collaborative relationship - from product supplier to kitchen designer - gives the designers a unique insight and an ability to select the right products for individual client's needs, in so doing turning their dream into a reality.

Read on to learn more. >>

Inspired Design



Dramatic Transformation



Return Journey



Kitchen Lockdown

Contents

- >> Page 4 - Inspired Design
- >> Page 6 - Exceptional Products
- >> Page 8 - Meticulous Management
- >> Page 10 - Kitchen Spotlight - Space Management

- >> Page 12 - Dramatic Transformation
- >> Page 16 - Diverse Designs
- >> Page 22 - Return Journey
- >> Page 26 - Design Community

- >> Page 28 - Kitchen Spotlight - Sinks & Taps
- >> Page 30 - Kitchen Lockdown
- >> Page 34 - Expansion of Knowledge
- >> Page 35 - Ultra-Compact Surfaces

With Thanks To:
Darren Chung (photography), Louise McCreath (words) & the associated brands <<

Inspired Design



True Oak shelving with integrated appliance, concealed by bi-folding doors.

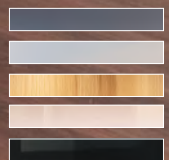


Feature open shelving, complete with lighting for a beautiful presentation space.



Integrated NEFF Slide&Hide® single oven and compact oven with microwave.




 Wilkins Grey
 Porcelain
 True Oak
 Silstone Snowy Ibiza
 NEFF Appliances

Balham 70 door in flat painted Porcelain & Wilkins Grey with True Oak feature elements, manufactured by Callerton in the North East of England.


 K-Tec have spent a number of years developing a training programme to assist their design-led 'Kitchen Specialist' partners. The three key critical components incorporated are: -

1. Great Design
2. First Class Quality Products
3. Meticulous Project Management.

It's worth asking where and how the process begins when creating a 'Dream Kitchen'. Which of these three areas come first or require the most focus? RK-Tec recognise all are critical – failure to deliver on any one of these inevitably leads to a project not fulfilling its true potential.

Where & how the process begins when creating a Dream Kitchen'

RK-Tec's philosophy relates (in the first instance) to establishing the design and layout. The three kitchen case studies featured within 'Kitchen Inspiration' highlight the point. It doesn't matter how good the products incorporated within a kitchen are, or how effective the installation and project management process is: - If the design doesn't first fulfil the brief.

The case studies also demonstrate diversity of style; from a Shaker painted, to an interesting Crossover/Hybrid, and a Hi-Tec Contemporary kitchen. The requirements, brief and criteria for each project being polar opposites. Such variety highlights the importance of ensuring a client's vision for their project is fully understood by the designer, so the concept is always developed with their aspirations in mind, but with the added expertise of the specialist to take that vision to the next level and surpass expectations.

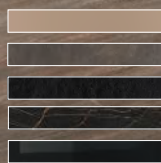
A further article included, 'Diverse Designs' exemplifies the different options that can be applied to individual projects. In the example a house from the Pottton Self Build Show Centre is transformed by Callerton's Design Team in four contrasting kitchen layouts. With such an abundance of possibilities on offer, the relationship between client and designer is critical, to correctly interpret a brief and maximise a project's potential.

Step one: - Ensure the design is correct before moving to phase 2 and 3. <<



The Edmington chimney breast from Callerton gives this kitchen stature & character.

Exceptional Products



Stone Grey
Black Gold Metal Slate
Dekton Sirius
Dekton Laurent
NEFF Appliances



This stunning new graphite grey oven is dark, dramatic & contemporary, featuring a graphite toned handle & strips for a look that is bang on trend.

NEFF Collection
N 90 Single Oven
B57CS24CoB

The integrated ceiling hood: the powerful & effective solution for larger and open plan kitchens, perfectly installed directly into the ceiling.



Bosch
Serie 6, Ceiling Hood
DRC97AQ50B



Siemens studioLine
iQ700, French multi
door style
CI36TP02

This exclusive studioLine Fridge Freezer offers exceptional flexibility & functionality. The stunning exterior ensures it is the showcase of any kitchen.



Handle-less Balham 58 doors in flat painted Stone Grey with Abstract Expressions in Black Gold Metal Slate, manufactured by Callerton in the North East of England.



of equal importance to getting the design and layout right at the outset, are the myriad of products needed to bring a vision to reality.

Form and function are essential. If a project fulfils the aesthetic criteria, but fails to perform operationally, there'll be disappointment. Spending time and effort to understand how the many elements involved in a new kitchen operate and perform will pay dividends. A design-led kitchen is a major investment and ensuring it works visually and in practise - is key to a successful outcome.

The RK-Tec brands encompass a broad field of products: - Furniture, appliances, sinks, taps, worksurfaces, lighting, components, and internal management systems. Each one a vital element in the creation of a successful project, but for someone with little prior experience of how to bring them all together, this could be a little daunting.

Engaging a kitchen design specialist who has developed the skill, knowledge, & ability to generate inspirational kitchens is key'

Engaging a kitchen design specialist who has developed the skill, knowledge, and ability to generate inspirational kitchens is key. The RK-Tec participants all provide extensive training programmes to their design partners and hence this being available to you.

An experience which brought home the importance of ensuring the correct products are incorporated into a kitchen relates to meeting Callerton's Design Team.

A module from their training programme asks the question as to the age of 5 different kitchens: - One a year old, another 5, the next 10, then 15, finally 20 years old. The 20-year-old kitchen recently re-photographed. I failed to realise the age - it looked brand new.

The most impressive aspect of the kitchen being almost everything was as per 20 years ago: - The furniture, hinges, drawers, runners, appliances, sinks, taps, worksurfaces, and flooring - the only changes being the lighting upgraded to eco-friendly LED's, new handles, and re-decoration.

I call that value for money. <<

AVENTOS HK top is the latest addition to Blum's AVENTOS range. The new extra-slim fitting is very discreet & yet comes with innovative features - it opens to any position, & closes gently & easily.



Franke's Minerva Helix 4-in-1 Electronic instant boiling water tap, pictured here in Copper, offers enhanced convenience and user-friendliness with its pre-set 30 and 60 second programmes that are ideal for filling pans, teapots, cafetières & jugs with instant 100°C boiling or filtered cold water.

Meticulous Management



Gransden Grey
Americano Oak Stain
Silestone Lagoon
NEFF Appliances



Original kitchen & conservatory prior to the renovation work.



Construction of new garden room with Velux windows.



Ducted extraction from the island, concealed in the floor.



Belham 90 door in flat painted Gransden Grey with Chelsea Trio in Americano Oak Stain, manufactured by Callerton in the North East of England.

Having established the importance of design and incorporating quality products. What of the third vital ingredient in developing a kitchen project and where does this come in the pecking order?

Ensuring the myriad of products incorporated into the design are available in the right sequence, allied to the importance of all trades and services following suit - are critical to ensuring a successful project. Painstaking and meticulous management being the third key element.

This aspect of creating a 'Dream Kitchen' is often overlooked. It won't matter how brilliant the design is, or how outstanding the products, if the project management and installation are not carried out to the same high standard.

A particular RK-Tec initiative helps to emphasise the importance of project management. For a number of years RK-Tec have partnered with Potton who have a unique 'Show Centre and Self Build Academy' at St Neots, Cambridgeshire. This facility consists of five contrasting house type examples, each one incorporating a different style of kitchen.

The first project undertaken seven years ago, transformed the ground floor living arrangement. The original house included a conservatory which was too hot in summer and too cold in winter. Potton decided to replace this with an all-year-round garden room and at the same time, reconfigure the ground floor layout, in so doing elevating the kitchen to the heart of the home. The imagery highlights the before and after transformation.

Saves time, money, stress, & hassle by following this methodology & greatly simplify the kitchen installation process'

The other pictures illustrate the construction phase and the importance of ensuring the services are in the correct place prior to the installation of the kitchen – plumbing, electrics, extraction, flooring, a first coat of paint! Save time, money, and hassle by following this methodology and greatly simplify the kitchen installation process. <<



First fix completed with services positioned correctly ahead of kitchen installation.

Kitchen Spotlight

Space Management

Every kitchen with Blum fittings benefits from a lifetime guarantee on the Blum parts



Blum have built up a reputation for selling quality fittings for kitchens and other home furniture, but they also provide an array of services to help every touch-point of their business.

From manufacturer through to the end-consumer everyone can be assured of Blum's attention to detail, and nearly 70 years of experience. The company tests every fitting they make, from a "simple" hinge (it has over 50 separate components!) through to hugely complex drawer runners which can take up to 70kg of weight – that's more than the weight of a small grown-up.

A kitchen that works perfectly, for the whole of its lifetime'

When your fitters are installing your kitchen, you can be assured that even if they haven't used Blum before, there is a technical hotline to talk through every possible stumbling block, meaning you will benefit from a kitchen that works perfectly, for the whole of its lifetime. And once the initial glow of your new kitchen is over, you just really want a kitchen that works... with hinges, drawer, and lift systems that open smoothly and close gently – every time. <<

Whether it's over a cup of tea, making dinner or just reading the children a bedtime story, Blum ideas & solutions have been trusted for nearly 70 years to be at the centre of family experiences within the home.

blum®



ETHEREAL

by Silestone®





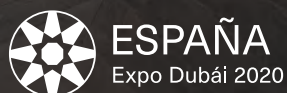
Beauty Beyond Natural



The Ethereal Collection was developed with HYBRIQ+® technology and contains a **minimum of 20% recycled materials**.

COSENTINO UK - CENTRAL OFFICES
Unit 10 Bartley Point
Osborn Way Hook Hampshire RG27 9GX
HQ: info.uk@cosentino.com

Discover more at [cosentino.com](https://www.cosentino.com) | Follow Us  



HYBRIQ+
TECHNOLOGY®

 **silestone**®

Designed by COSENTINO

HybriQ+® and HybriQ Technology® are registered trademarks owned by Cosentino.
The Ethereal series includes protected designs and technologies.

Dramatic Transformation

The benefits of engaging a kitchen design specialist capable of working hand in hand with you to understand your desires, needs, and requirements for a new kitchen are evident in this particular venture.



“The input from my designer proved invaluable when understanding the possibilities available to us”

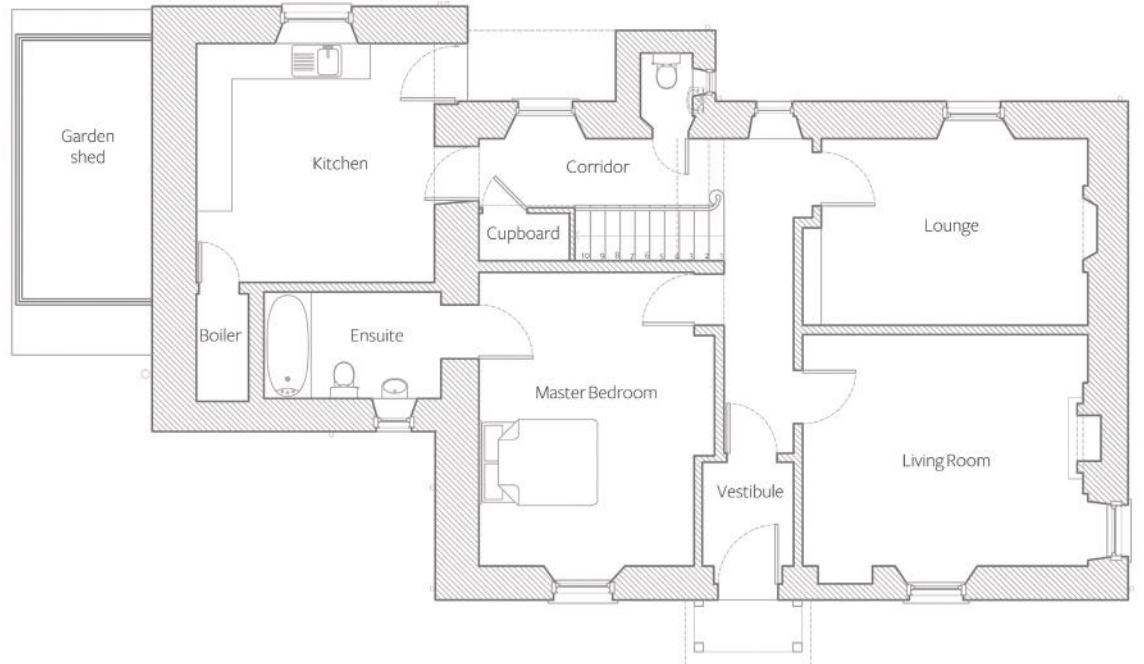


“**F**ar more than a

new kitchen, it truly revolutionises how our house performs and functions” quoted the rightfully proud owner and driving force behind this project.

The plans of the original house layout help demonstrate the dramatic change and how this was achieved. Previously the kitchen sat at the rear of the house, no view, lack of light, back door straight into the room. The master bedroom suite at the front of the property and immediately off the hall, on the other hand, having the best view and light, but just in the wrong location for a bedroom.

The owners Jane and Jack inherited this layout when purchasing the property four years earlier. They recognised its potential and wanted a kitchen that would form the heart of their family home. Somewhere they could cook, relax, and come together with their two young children. A further quote which demonstrates the trust and bond established between client and professional. “The input from my designer (Rob) proved invaluable when understanding the possibilities available to us”.



Plan of the original layout with kitchen to the rear of the house.



The beauty of a touch to open appliance garage.



Statement island in Okra with complimentary window seating & framed integrated open cabinet with glass & mirror detail.

Their ‘Eureka’ moment came during the initial consultation with their designer Rob. In going through Callerton’s Design Criteria document, the purpose of which is to get clients to identify their needs and aspirations for their project, helped them realise what it was they wanted - an open plan kitchen, living, and dining area suitable for modern living, but in a complementary style to the traditional property.

Much else came from this initial consultation; 2 NEFF slide and hide ovens, large induction hob, separate microwave, fridge and freezer, dishwasher, powerful extraction, centre-island with a breakfast bar for all the family, Belfast sink, lots of accessible storage were all must-haves. Jane even had the colours predetermined - a deep green and neutral palette - for a Shaker inspired design with a contemporary twist.

After much discussion Rob came up with the proposal to swap the existing kitchen with the master bedroom. This would allow the kitchen to overlook the garden, and the master bedroom more appropriately positioned at the quieter side of the house with less natural light. This opened up the possibility of an extension as there was space to do so at the front of the property but not the back. The resulting extra square footage allowing ample room for a combined kitchen, living, and dining concept.

Rob prepared some initial CAD drawings of the kitchen area which the owners loved. An architect was then engaged to establish whether the whole concept was feasible and to take it through the planning process as the house was located in a conservation area.

To cut a long story short, the project went ahead with a few ups and downs along the way - COVID-19, lockdowns, trade-freeze, working from home whilst home schooling - but of the final result Jane said "It was well worth the wait, we couldn't be happier!" <<



Natural light from roof lantern & floor-to ceiling windows.



Open plan living with integration of kitchen, dining, & living areas.



Bringing the outside in with large patio doors.



A successful modern intervention.



Diverse Designs

The

earlier article 'Meticulous Management' incorporates a kitchen within the Grandsden show-house at the innovative Potton 'Show Centre and Self Build Academy'.

But what if the design, style, and layout doesn't appeal to you?

We've emphasised the importance of a kitchen design fulfilling your needs and requirements, both functionally and aesthetically. But choice of design, style, colour and products are extremely personal. The following alternative designs for the Grandsden aim to demonstrate the breadth of diverse options available.



Grandsden show-house at the Potton Self Build Show Centre prior to developing kitchen design concepts.



Described as a Crossover/
Hybrid genre, this style
incorporates various elements
from Callerton's Deco and
Hi-Tec array of products.
The curved feature ends and
traditional doored cabinetry
are mixed with on-trend
handle-less furniture,
in the contrasting finishes
of contemporary matt with
stained and lacquered veneers.

The island with its three
worksurface heights, is ideal for
multi-generational use. The fridge
and freezer are built off the floor to
provide ease of access. Dine in style
at the table, or go informal with a
glass of wine at the breakfast bar.
Open shelves, a splash of colour,
contrasting stools, and chairs,
all together achieve a kitchen
that's eminently functional but
aesthetically beautiful. >>

CAD drawing produced using CompuSoft's industry-leading Winner Design software.



Various worksurface heights are ideal for different tasks.



The feature extractor adds grandeur & presence.

Shaker - A traditionally-inspired design option with a hint of contemporary, this frame effect furniture provides a striking look. The dual paint finish and wide colour palette present a plethora of options. And with the inclusion of the latest internal management and storage systems, and interesting twists such as handle-less design and open shelved areas all incorporated, elevates this long-established genre.

The functionality of this layout also comes to the fore. A butler's pantry bi-fold storage area with fridge and freezer on either side, lots of pull-out drawer space rather than deep cupboards, the large expanse of worksurfaces for preparation whilst doubling up as a breakfast bar, and the sink and hob all with easy access but within entirely distinct preparation zones.

'A traditionally-inspired design option with a hint of contemporary'



Two paint finishes combined with glass & contemporary materials.





Classic features offer traditional touches with an intricacy that flows through the design.



Floating banks house refrigeration, ovens, a cocktail bar, storage, & media equipment.

Classic - This option is a grand concept with a distinctly traditional feel. A major change in layout this time being the utilisation of the window wall to incorporate the wet area (sinks, dishwasher, and waste bins). The large full height chimney breast and free-standing furniture, inject bold and striking pieces into the design. The detailed worktop and cornices echo the shape of the decorative end panels.

The ornate features and classic look will not appeal to those intent on Hi-Tec/Contemporary, but all of these differing concepts highlight the individuality of each and every client. Engage a 'Design Specialist' to ensure an accurate interpretation of your aims and wishes.

Hi-Tec - Taking a more contemporary approach, this is a simple and sleek concept that keeps many of the working elements hidden from view.

The furniture incorporates the ovens and TV suspended off the floor. The large pocket doored cabinetry unit caters for a mass of storage and is attractive, both open for easy access, or closed to keep the contents hidden.

These options demonstrate that the same footprint can be interpreted in a variety of different ways, to suit the preferences and personality of the clients. By proposing these options utilising CAD technology allows clients to easily test out alternative colours or products to get the concept right virtually, rather than making changes in reality, and demonstrates the importance of designing for the individual. <<

Isn't it time you visited our ...
Self Build Show Centre



Discuss your project with our Self Build Consultants

Explore our Product Centre & Build Systems

Home to the Self Build Academy

5 Fully Furnished Show Homes



Potton Self Build Show Centre

Mill Lane, Little Paxton, St Neots,
Cambridgeshire, PE19 6EF

Opening Times

Monday - Friday: 9am - 5pm
Saturday: 10am - 4pm

01767 676400

www.potton.co.uk

sales@potton.co.uk



40 years of success in the manufacture of design-led kitchen furniture, places Callerton at the forefront of style, innovation and choice.

Aberdeen 01224 826 776 - Ayr 01292 618 277 - Barrow-in-Furness 01229 871 122 - Beaconsfield 01494 681 444
 Berwick 01289 306 784 - Broxburn 01506 862 780 - Cambridge 01223 213 266 - Colchester 01206 234 864
 Edinburgh (EH3) 0131 523 0477 - Edinburgh (EH15) 0131 337 3434 - Glasgow (G4) 0141 404 7744
 Glasgow (G76) 0141 644 1435 - Harrogate 01423 701 200 - Horsham 01403 790 812 - Ilkley 01943 817 477
 Killinghall 01924 872 995 - Kilmarnock 01563 530 838 - Leeds 0113 294 1414 - London (NW2) 020 8452 7774
 Newcastle upon Tyne 0191 286 0514 - Oxford 01865 952 998 - Penrith 01768 895 566 - Sheffield 0114 236 6933
 Shipston-on-Stour 01608 690 870 - St Neots 01480 877 274 - Sterling 01259 237 010 - Stourbridge 01562 887 212
 Tain 01862 893 436 - Warrington 01925 636 997 - Widnes 0151 424 3535 - Wirral 0151 342 7442

Return Journey

James, the designer of this kitchen, worked with the clients Anna and Tom twenty years earlier on their first ever property. He was delighted to be approached again for this their most recent renovation.



“Have you considered removing the wall between the current kitchen & the dining room?”



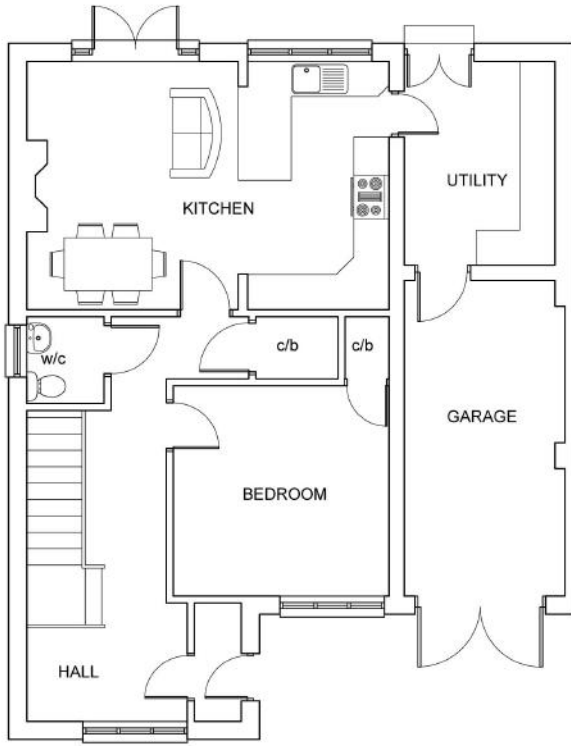
James is actually a founding Director of Callerton (the furniture manufacturers of the RK-Tec team). He has recently stood down as Company Chairman after 40 years' service, but explained he took on this particular project as a family friend, rather than his day job.

Anna and Tom are both doctors and have two teenage children. They had expended much time, effort, and energy in planning their new kitchen, settling on a glazed garden room extension. But one simple question from James turned their thought process on its head.

“Have you considered removing the wall between the current kitchen and the dining room?” James recognised that the extension itself would leave very little room to develop the kitchen aspect of the project, whereas taking out the wall to the dining room, an underutilised space, would open up a wealth of possibilities.

“We had not even considered that” explained Anna. “James really opened our eyes to new ideas and we certainly benefited from his knowledge and experience.” >>

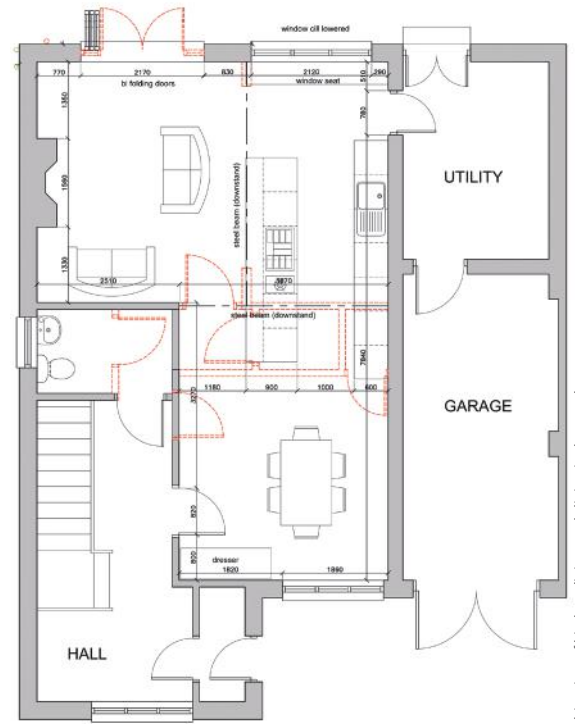
Architectural plans of the original layout.



The relationships between designer and client is an important one. James describes the process of "getting inside your client's head and extracting their thoughts as crucial. But more than that a great designer takes a client's specifications, works in line with the physical space, but has the ability to take their expectations to new heights with a design that blows them away."

Loving the concept and having established their willingness to be bold, the architect plans of the original layout and those ultimately submitted for planning and building regulations, demonstrate the radical change.

The finished project is the perfect combination of kitchen, living, and dining which exceeded the family's requirements in a crossover/ hybrid mixture of genres. <<



Combination of kitchen, living, and dining in the new layout.



CAD images produced in Winner Design were used during the design process to demonstrate concepts & reach agreement on the final design.

The completed living space with the kitchen forming the centre of the open-plan home.

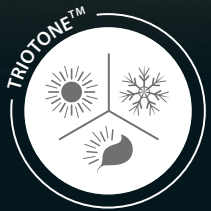


The Shark nose profile to the worktop accentuates the curved features.

Cool white

Natural white

Warm white



MAKING LIGHTING SIMPLE

TRIO TONE™ LIGHTING TECHNOLOGY

A Sensio trademarked concept, TrioTone™ provides 3-in-1 lighting choice in one fitting.

TrioTone™ products are specifically designed to provide the option to select or change the light's colour temperature without having to replace the whole fitting.

Simply set the colour temperature to warm, natural or cool white with the switch on the back of the fitting.

sensio®
furniture lighting solutions



innovate. create. illuminate.™
Discover more at sensio.co.uk

Sensio Lighting Limited,
Unit 7, Speedwell Road,
Castleford,
West Yorkshire,
WF10 5PY, United Kingdom.

T: +44 (0) 1977 522 020
E: info@sensiolighting.com

Design Community



Callerton run a programme entitled the 'Design Community' which encourages designers from their National Network to examine future trends, concepts and ideas.

In one of their forums the discussion focussed on the impact of Covid-19 and how national lockdowns brought about a new way of thinking for the community. With kitchen studios unable to open their doors to the public, Callerton and the RK-Tec partners combined to create the 'Virtual Online Studio' which allowed designers and clients to still progress their new kitchen projects without physically meeting.

A second session involved imparting knowledge of designing kitchen displays to showcase different, new and emerging styles. Creating aspirational and visionary kitchen displays is a complex task, but as shown in the imagery stunning and forward-thinking examples of best practice were shared.

Another session reviewed new product concepts and ideas which had either come to market or were at an advanced prototype stage, including lighting and handles. Some developments focussed on advancing practical solutions to enhance a product's functionality, others encapsulated new and emerging design trends and techniques.

'Encourages designers from their National Network to examine future trends'



The final session involved 'Industry Experts' from a variety of fields to an open round table discussion. The broad remit and experience of the RK-Tec partners provided much food for thought and interesting insights into the future direction of travel for the kitchen industry with leading figures imparting their expertise to the group. We look forward to seeing the next generation of kitchen products and design concepts hit the market! <<

Depth, height, finishes, & much more are employed to produce this designer kitchen.

Appliance housing and storage in a bright pink is revealed by two pocket doors.

The RK-Tec website (www.rk-tec.co.uk) includes a digital studio with a range of diverse designs.

Kitchen Spotlight

Sinks & Taps

F

ranke's innovative new Atlas Neo Sensor touch-free tap is designed to make everyday tasks easier in modern kitchen living.

Operated with a wave of a hand, Atlas Neo Sensor offers the dual benefits of true, touch-free technology combined with manual operation from a single lever tap to deliver a host of hygiene, user-convenience and sustainable benefits.

Franke's touch-free Atlas Neo Sensor tap supports modern living

The tap is crafted from hygienic and non-porous premium solid stainless steel and features a smooth and seamless design which leaves nowhere for bacteria to hide. Its simple touch-free operation supports easy handwashing and minimises contact with the tap.

An intuitive, infrared sensor is optimally positioned on the side of the tap for ultimate control and easy use. It responds instantly to a simple movement within its 5-10cm operating range to dispense 2.5 litres of water, making it perfect for hand washing, rinsing pots and pans and cleaning vegetables.

Atlas Neo Sensor can help consumers to save energy, save water and reduce their utility bills with its pre-measured water flow and option to set at a chosen temperature. It's estimated that up to 3 litres of water can be saved per hand wash, slashing consumption by at least 50%.

The Atlas Neo Sensor comes in a choice of Swivel Spout and Pull-Out Nozzle models. <<

Atlas Neo Sensor can help consumers to save energy, save water, & reduce their utility bills'



Franke's Atlas Neo Sensor Pull-Out Nozzle tap features a pull out flexible nozzle to provide easy access to the sink & ample space for washing and filling pots & pans. Contact Franke: 0161 436 6280 or www.franke.co.uk

Franke's Atlas Neo Sensor tap in premium stainless steel combines touch-free technology & manual operation with a high quality, sustainable solution for your kitchen. Pictured is the Atlas Neo Sensor Swivel Spout tap. Contact Franke: 0161 436 6280 or www.franke.co.uk

Contact Franke:
0161 436 6280 or www.franke.co.uk/sensor

MAKE IT WONDERFUL

FRANKE



BOSCH

Invented for life

Bosch is the perfect choice for seamless integrated appliances.

Save more, waste less. Our flexible range of built-in fridge freezers are packed with innovative technology to keep food fresher for longer, so whichever model you choose, your customers will have a lot of reasons to love our Bosch cooling appliances.



Bosch-home.co.uk

Kitchen Lockdown

Sheila retired from the Bank after many years and now enjoys part-time employment as a barista at her local farm shop. She set the wheels in motion for her new kitchen prior to the first lockdown in 2020, but only to the extent of having an initial consultation with her design specialist Mandy.



“ I don't know how the project could have progressed without all Mandy's wonderful help & advice - it's changed the way I live ”



Handle-less Monza doors in Matt Frost White with Abstract Expressions in Pewter Halifax Oak, manufactured by Callerton in the North East of England.

Sheila loves nothing better than cooking, but recognised her kitchen was inadequate for her needs. It was cold, draughty, and simply not conducive to engaging with her passion. Space was limited and the layout mediocre. Sheila knew she needed expert input to transform the room.

Sheila's sister was friends with Mandy and put the pair in touch. "I've much to thank my sister for" explained Sheila. "When I first saw the proposed design Mandy came up with, I couldn't believe it was my kitchen!"

But it wasn't an easy process! Covid-19 struck and national lockdowns imposed, yet despite being in the midst of a global pandemic, the enterprising duo went about creating a dream kitchen for Sheila based on their initial consultation.

During that initial meeting, dimensions had been established and Sheila had discussed but not submitted her Design Criteria document. "Mandy was a Godsend" explained Sheila "I don't know how the project could have progressed without all her wonderful help and advice - it's changed the way I live."



Kitchen design relates to more than furniture, it involves utilising the space & layout most effectively.



1



3

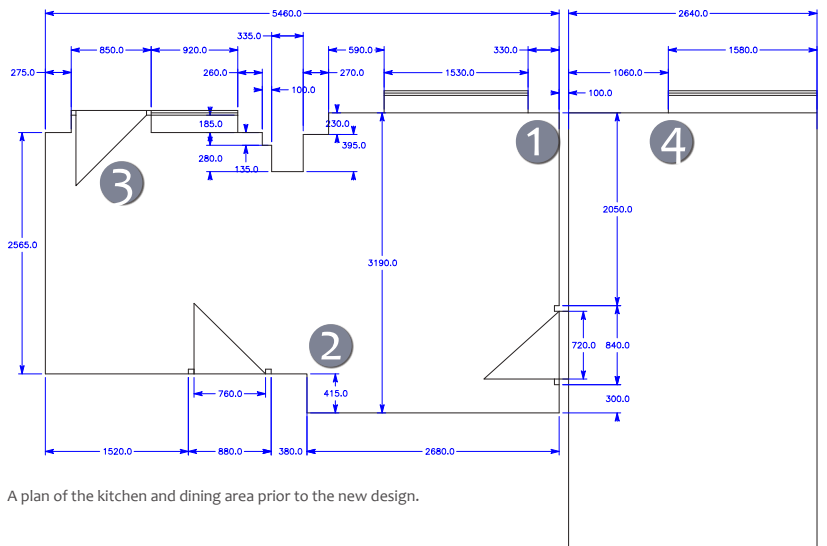


2



4

The previous kitchen was disjointed, cold, and draughty.



A plan of the kitchen and dining area prior to the new design.

‘Sheila’s project epitomises why engaging a design-led kitchen specialist should be the first step of your journey’

Despite kitchen studios being closed and home visits decreed off-limits, conference calls and CAD (Computer imagery) kept the project on track. As can be seen from Mandy’s site survey and pictures of the original kitchen, compared to the finished photographs, she has worked wonders with the design.

Now the project is complete “I can honestly say it has changed the way I live”. Mandy certainly worked wonders and turned the original kitchen on its head.

Sheila’s project epitomises why engaging a design-led kitchen specialist should be the first step of your journey. The budget was far from infinite and Mandy took this on-board from the start. Good design does not have to cost a fortune but does require consideration and planning to ensure the choices made keep within the financial boundaries.

As Mandy has demonstrated, great kitchen design relates to more than furniture. It involves utilising the space and creating a layout in the most effective manner. There were pillars to either side, as well as a stairwell encroaching into the room. These have been disguised and completely hidden from view by careful positioning of different heights and depths of furniture.

The creation of a separate utility resolved the issue of washing machine, storage and central heating boiler being on display, as well as insulating the kitchen from cold and draughts. Re-siting, as well as replacing the doors and windows with double glazed units, further resolved the issue of heat-loss. Removing the wall to the dining area opened up the kitchen making a light and airy space.

The final piece of the puzzle was of course the incorporation of a built-in coffee machine – a present from Sheila’s Mum. What barista wouldn’t want their very own coffee machine! A masterclass from Mandy. <<



CAD images were employed to demonstrate design ideas during the project & to get a feel for the new space.



The contemporary kitchen leads into a raised seating & a formal dining area.



Complimentary separate utility room, designed to house laundry appliances.

Expansion of Knowledge

*J*ames Herriot,
a founding member of
the RK-Tec initiative reflects
on his involvement with the group and
40 years in the industry.

Having had no formal interior design training myself, but a passion for the subject, establishing the RK-Tec initiative has been a fascinating and enlightening experience. Even now after so many years, I'm still in awe of how projects begin with a blank canvas, to how the resulting kitchens continue to wow with ever evolving trends, new products and design solutions.

RK-Tec's philosophy in relation to teaching the importance of 'Design, Products, and Project Management' provides an answer as how this can be achieved. It is this mission that makes the RK-Tec project and proposition unique.

Involvement over many years with the RK-Tec members, as well as all our 'Design-led Kitchen Specialist Partners' emphasises no one person possess all the skill and knowledge. It's a massive team effort - a successful kitchen project involves a broad range of diverse skills and specialities.

RK-Tec's approach and attitude to creating an education programme that encompasses in-depth product training in relation to their diverse portfolio of products; furniture, appliances, sinks, taps, worksurfaces, lighting, components, and internal management systems is a major factor.

Add to that Callerton's 'Dealer Training Programme' as a further avenue to the ongoing expansion of knowledge and education within the industry. Such programmes are paying - dividends and contribute to the continuous advancement of kitchen design.

As I step back from day-to-day involvement in the industry, I commend the RK-Tec participants and our network of design specialists for their continued commitment to the creation of the kitchens of the future. <<

Kitchen design relates to more than furniture, it involves utilising the space & layout in the most effective manner.



Education enables designers to have confidence in the products they are specifying.

**Redefining Surfaces.
Redefining Kitchens.**

DEKTON[®]
designed by COSENTINO



Homes evolve, they become social spaces in which we do not only cook, but live in.

We have created a resistant and durable material with unlimited designs, to create spaces without labels.

A product designed by COSENTINO

New Dekton

INDUSTRIAL

Flooring Dekton Lunar
Exterior Dekton Kreta
Kitchen Island Dekton Soke & Kreta Slim 4mm

Find out more about the 25 year Dekton warranty, look out inspiration and find resources at www.cosentino.com


COSENTINO UK - CENTRAL OFFICES
Unit 10 Bartley Point / Osborn Way Hook Hampshire RG27 9GX
HQ: info.uk@cosentino.com / Follow Us: [f](#) [t](#)



ESPAÑA
Expo Dubái 2020



SIEMENS



Create the best conditions for perfect moments.

Present your exquisite wine collection in your home – with elegant wine cabinets from Siemens. Thanks to the adjustable temperature zones, every bottle is stored in optimal conditions. The perfect environment for your wine to develop its full potential.
siemens-home.bsh-group.com

The future moving in.

Siemens Home Appliances

