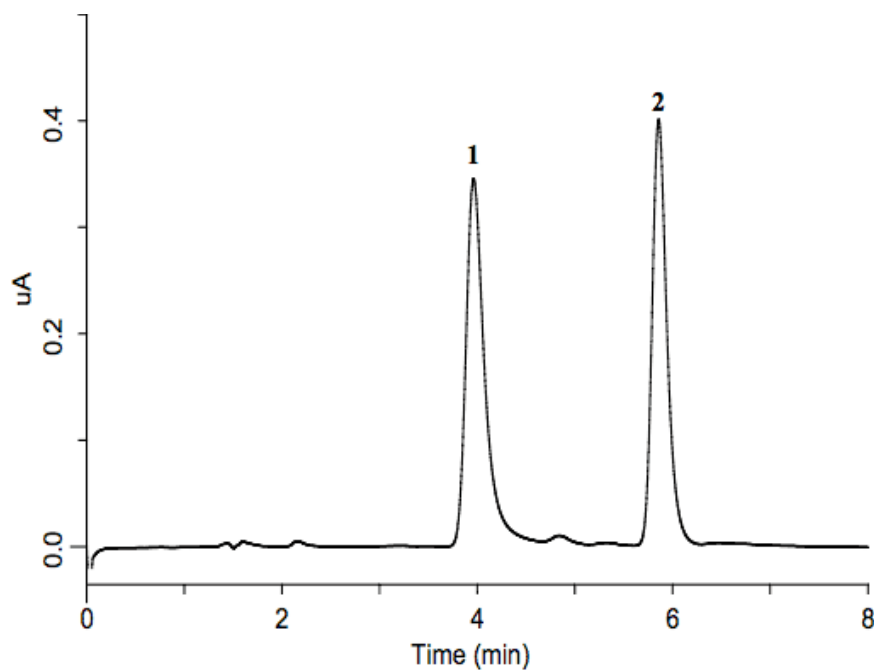


InertSearch™ for LC

Inertsil® Applications

Analysis of water-soluble vitamins

Data No. LA507-0000



System : GL-7400 system

Column : Inertsil ODS-SP (5 μ m, 150 \times 4.6 mm I.D.)

Column Cat. No. :

Eluent : A) CH₃CN

B) 0.1 % H₃PO₄

A/B = 18/82, v/v

Flow rate : 1.0 mL/min

Col. Temp. : 40 °C

Detection : ECD 1600mV vs. Ag/AgCl (ED 703 ECD Detector, Diamond)

Injection Vol. : 10 μ L

Sample : water-soluble vitamins

Solutes : 1. Cyanocobalamin (2 μ g/mL)

2. Biotin (2 μ g/mL)