



# SMA AL FALAH

## Darmo-Surabaya

Jl. Citarum No 23-25 Darmo Kec Wonokromo Kota Surabaya



## SCHOOL ADMISSION



0821 3700 6686



[www.spmb.alfalahsby.sch.id](http://www.spmb.alfalahsby.sch.id)



Cambridge Assessment  
International Education

Cambridge International School



# VISION

An educational institution whose entire activities are guided by Islamic values based on the Qur'an and Al-Hadith, which aims to nurture righteous children with noble character and optimal achievements

# MISSION

- Preaching through education and supporting parents in raising righteous children.
- Implementing an educational process that optimizes student's potential.
- Fostering a Qur'anic generation with leadership qualities and life skills, based on IT and entrepreneurship.

## Our Values

# WINNERS

### WORK HARD

Dedicate effort & stay focus

### INSPIRE OTHERS

Be a role model and encourage people

### NEVER STOP LEARNING

Embrace curiosity and seek knowledge

### NEVER GIVE UP

Stay resilient even when facing academic challenges

### ENGAGE ACTIVELY

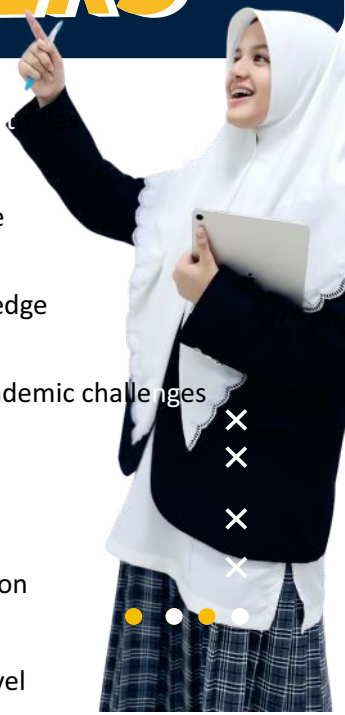
Actively participate in activities

### RESPONSIBILITY

Take charge of actions and education

### SELF-DISCIPLINE

Manage time and priorities effectively



# KAFAH CURRICULUM

A comprehensive curriculum that integrates Islamic education with national and international standards, emphasizing :

- Academic Excellence:  
Factual, Conceptual, Procedural, Metacognitive
- Advanced life skills:  
Creative, Critical Thinking, Communication, Collaboration, Computation, Compassion
- Strong religious character to prepare students in facing global challenges and shape school values **“WINNERS”**.

## FLAGSHIP

## PROGRAM

1. Cambridge Curriculum
2. Tahfidz minimal 5 juz
3. Project Learning
4. Multilingual Program
5. IT-Preneur
6. Student & Teacher Exchange
7. Social and Religious Responsibility Project
8. Olimpiade Class
9. Adabul 'Alim  
Walmuta'alim Learning
10. Public Speaking Program
11. Quranic Memorization Check



Where Knowledge And Faith Shape WINNERS



## PROFILE OUTCOMES

Al Falah Educational Institution is committed to nurture outstanding future generations through a profile outcomes built on three core aspects: **Islamic Personally, Internationally Minded, and Winning Mindset.**

- **Islamic Personally**

Students possess strong Islamic faith, noble character, and are consistent in performing acts of worship.

- **Internationally Minded**

Students achieve academic excellence and meet both Islamic and international competency standards.

- **Winning Mindset**

Students are tech-savvy, Mastery of the Qur'an, multilingual, having leader spirit, and strive for achievement and excellence.



## DINIYAH BOARDING PROGRAM

- |                    |                    |
|--------------------|--------------------|
| • Tahfidz & Tahsin | • Tarikh Islam     |
| • Hadist           | • Muhadatsah       |
| • Fiqh             | • English & Arabic |
| • Mahfudzot        | • Adab             |
| • Imla'            | • Muhadharah       |



## 1. CAMBRIDGE CURRICULUM

- Mathematic
- English
- Science
- International Learning with Local Wisdom

## 2. NATIONAL CURRICULUM

- Merdeka Curriculum
- Deep Learning Approach
- STEAM Approach ( Science, Technology, Engineering, Art, Mathematics)
- Al Falah Project-Based Learning

## 3. SPECIALIZATION CURRICULUM

### **1. Technology and Information**

- Website development
- Programming
- Artificial Intelligence (AI)
- Internet of Things (IoT)
- Communication Visual Design
- Digital Business

### **2. Social Entrepreneur**

- Entrepreneurial mindset
- People management
- Collaborative & Communication Skill

### **3. Science Entrepreneur**

- Science preneurial mindset
- Research & Science Literacy
- Integrated project
- Science Competition

### **4. Proficient in English and Arabic**

- Speaking and discussion activities
- Interactive Learning
- Cultural learning





## FLAGSHIP PROGRAMS

- Advance Study
- Quality Control Tahfidz
- Talent Mapping
- Visionary Leader Proposal
- Inspiring and Survival Project
- Social Action
- Life and Career Proposal
- Technology Inovation Exhibition
- Study Overseas
- Goes to Campuss
- Syiar Festival
- Smafada Youth Preneur
- Literacy Campaign
- Olimpiad Class
- Outing Class

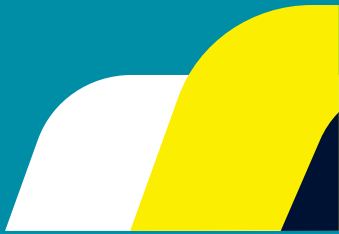
## EXTRACURRICULAR

- Coding
- Robotic
- DKV
- Qiroah
- Scouting
- Swimming
- Archery
- Horseback Riding
- Basket Ball
- Futsal
- Tapak Suci
- Taekwondo
- Fashion Art
- Health & Beauty
- Literacy
- Handycraft
- Social & Science Club
- Islamic Percussion



## OLYMPIAD CLUB

1. Mathematic Class
2. Science Class
3. English Class
4. Social Class
5. Tahfidz Class
6. KIR Class
7. Public Speaking Class
8. Techno Digital Class



Cambridge International School  
ID251

- Classroom with Promethean boards
- ICT Labs
- Dedicated Science Lab: Physics, Biology, Chemistry
- Language Laboratory
- Indoor Sport Hall: basket, futsal, badminton
- Shaded outdoor play area
- Swimming Pool
- Indoor Multipurpose Hall
- Canteen

## SCHOOL FACILITIES

## Where Knowledge And Faith Shape WINNERS





## ◦ ACADEMIC HOURS

GRADE	DAYS	TIME
X (Tenth)	MONDAY-FRIDAY	07.00-15.50 WIB
XI (Eleventh)	MONDAY-FRIDAY	07.00-15.50 WIB
XII (Twelfth)	MONDAY-FRIDAY	07.00-15.50 WIB

## > PARTNERSHIP SCHOOL







YAYASAN MASJID  
**AL FALAH**  
S U R A B A Y A

## THE ECOSYSTEM



YAYASAN MASJID AL FALAH SURABAYA  
**LEMBAGA PENDIDIKAN  
AL FALAH**



YAYASAN MASJID AL FALAH SURABAYA  
**REMAJA MASJID  
AL FALAH**



YAYASAN MASJID AL FALAH SURABAYA  
**Al Quran  
AL FALAH**



YAYASAN MASJID AL FALAH SURABAYA  
**MASJID  
AL FALAH**



YAYASAN MASJID AL FALAH SURABAYA  
**BIRO  
KONSULTASI  
MASJID AL FALAH**



YAYASAN MASJID AL FALAH SURABAYA  
**Al Falah Biz**

## GROUP OF AL FALAH DARMO EDUCATIONAL INSTITUTION



YAYASAN MASJID AL FALAH SURABAYA  
**LEMBAGA PENDIDIKAN AL FALAH  
KB-TK AL FALAH  
SURABAYA**



YAYASAN MASJID AL FALAH SURABAYA  
**LEMBAGA PENDIDIKAN AL FALAH  
SD AL FALAH  
DARMO • SURABAYA**



YAYASAN MASJID AL FALAH SURABAYA  
**LEMBAGA PENDIDIKAN AL FALAH  
SMP AL FALAH  
DARMO • SURABAYA**



YAYASAN MASJID AL FALAH SURABAYA  
**LEMBAGA PENDIDIKAN AL FALAH  
SMP AL FALAH  
DESAWARAH • SIDOARJO**



YAYASAN MASJID AL FALAH SURABAYA  
**LEMBAGA PENDIDIKAN AL FALAH  
SMA AL FALAH  
DARMO • SURABAYA**