

InertSearch™ for LC

Inertsil™ Applications

Analysis of Steviol glycosides

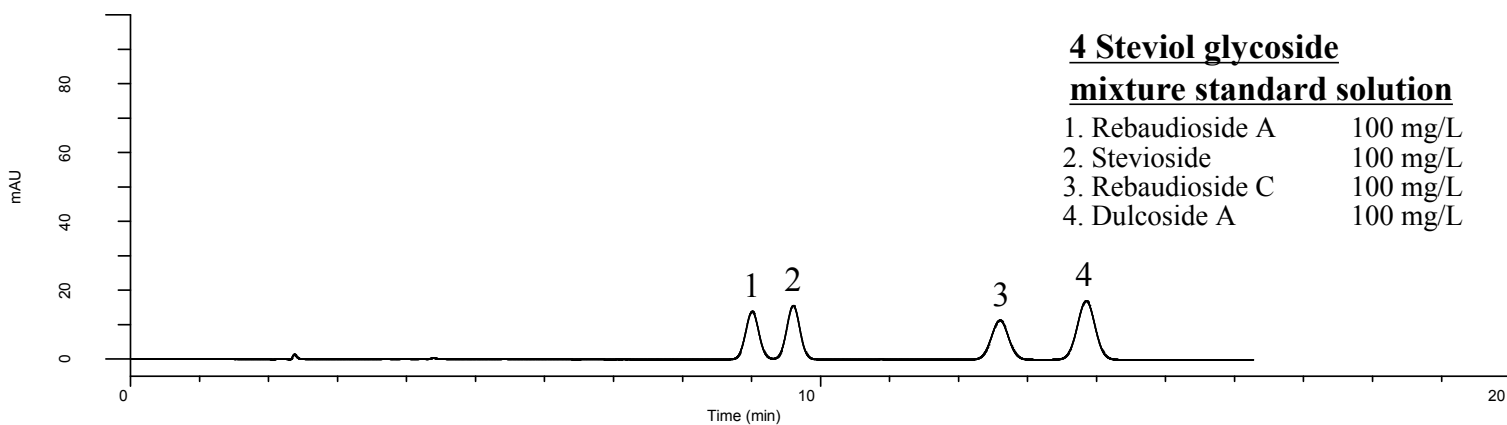
(Under the Condition of the JSFA-IX (Japanese Standards of Food Additives),
Stevia Extract)

Data No. LB566-0919

4 Steviol glycoside

mixture standard solution

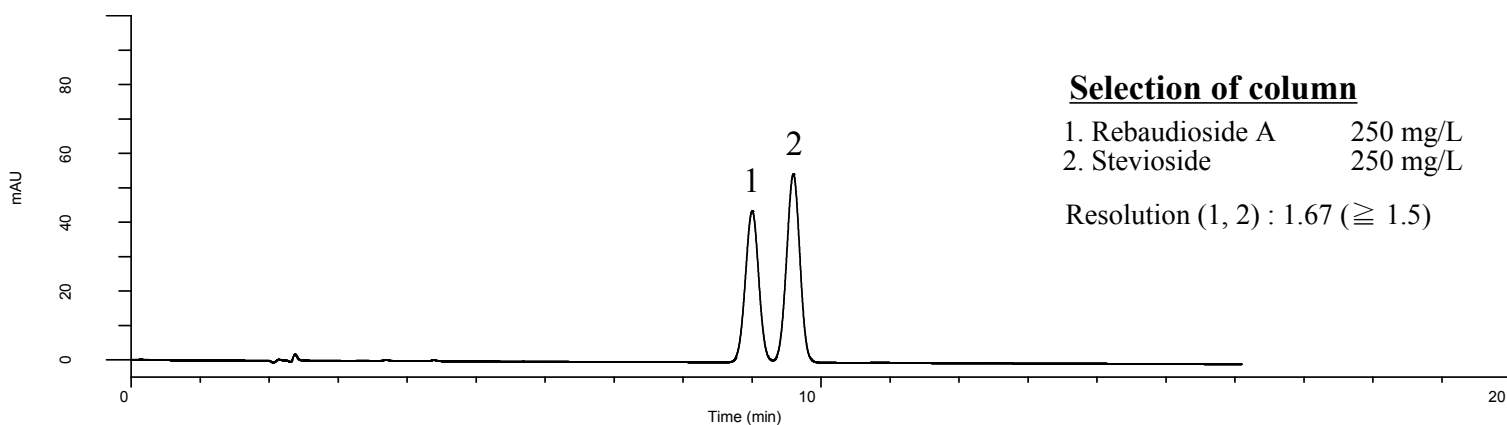
1. Rebaudioside A	100 mg/L
2. Stevioside	100 mg/L
3. Rebaudioside C	100 mg/L
4. Dulcoside A	100 mg/L



Selection of column

1. Rebaudioside A	250 mg/L
2. Stevioside	250 mg/L

Resolution (1, 2) : 1.67 (≥ 1.5)



Conditions

System	: GL7700 HPLC system
Column	: InertSustain AQ-C18 (5 μ m, 250 x 4.6 mm I.D.)
Column Cat. No.	: 5020-89731
Eluent	: A) CH ₃ CN B) 0.01 M Phosphate buffer in H ₂ O (pH 2.6)* A/B = 8/17, v/v
Flow Rate	: 1.0 mL/min
Col. Temp.	: 40 °C
Detection	: UV 210 nm (UV7751 UV Detector)
Injection Vol.	: 10 μ L
Sample	: Standard

Analyte:

1. Rebaudioside A
2. Stevioside
3. Rebaudioside C
4. Dulcoside A

*Dissolve 1.56 g of sodium dihydrogenphosphate dihydrate in 1000 mL of water (Solution A).

Dissolve 1.15 g of phosphoric acid in 1000 mL of water (Solution B).

Mix together equal parts of Solution A and Solution B.