

Water contained in acetic acid may sometimes affect the experiment result, such as chemical reaction or mobile phase adjustment of normal phase LC. This time, in order to confirm such quality, water contained in brand-new acetic acid of special grade (higher than 99.7%) was measured simply by the standard addition method.

## Procedure of Pretreatment

Special grade  
acetic acid 99.7%

Pour approximately 9mL into  
10mL measuring flask.

### GC Conditions

<b>System</b>	: GC/TCD
<b>Column</b>	: InertCap Pure-WAX 0.53 mm I.D. × 15 m, df = 1.00 μm
<b>Col.Cat. No.</b>	: 1010-68425
<b>Col.Temp.</b>	: 80 °C
<b>Carrier Gas</b>	: He, 12.0 mL/min
<b>GC Inlet</b>	: 150 °C, Split 5:1 Split flow 60 mL/min
<b>Detection</b>	: TCD (120 mA Low, 130°C)

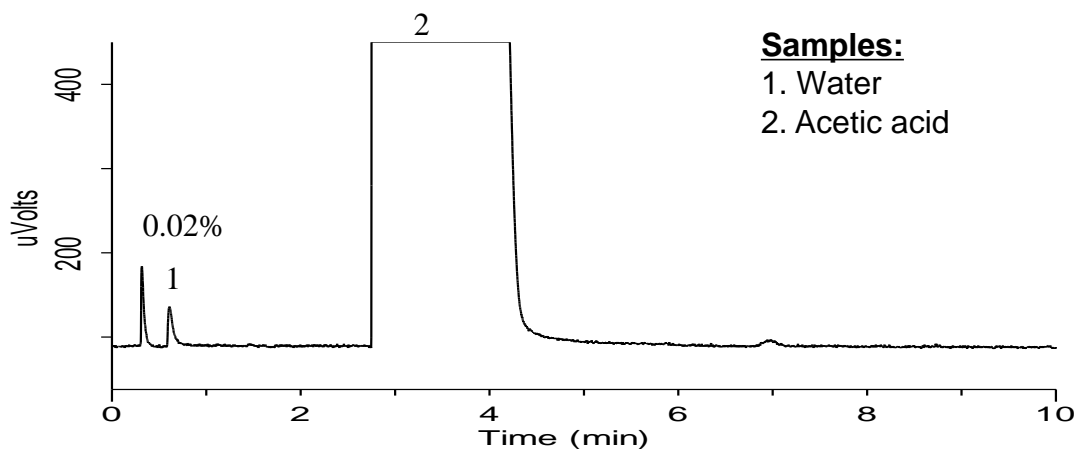
Addition of ultrapure water

Add each amount of water  
into 10mL measuring flask  
and then dilute by acetic acid.

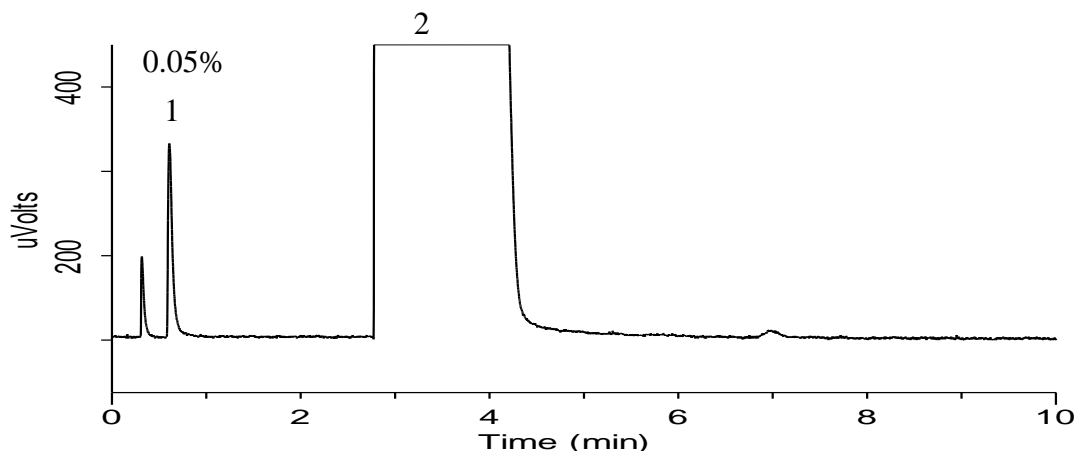
GC/TCD

## Result

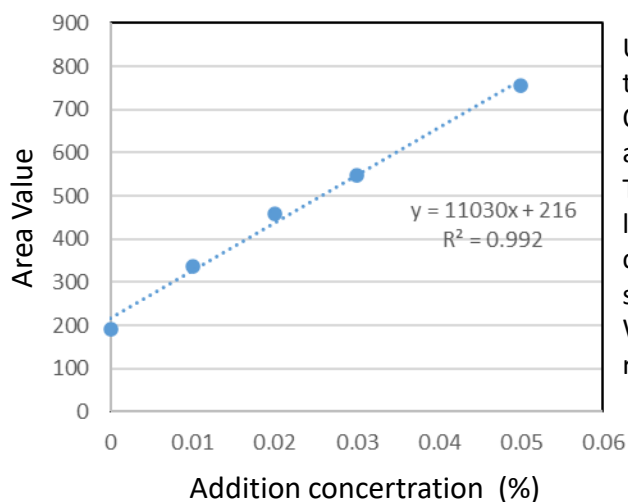
<Chromatogram of special grade acetic acid>



<Chromatogram of special grade acetic acid added with ultrapure water of 0.05%>



## Reference: Quantitation by standard addition method



Ultrapure water was added to special grade acetic acid so that the water contain may become 0.010, 0.020, 0.030 and 0.050%. Original water contain becomes relatively reduced when added, and calibration curve is estimated to become a curved line.

This time, an even convex curve was obtained, but within the linearity range of  $R^2 =$  higher than 0.99, quantitation of water contain in special grade acetic acid was implemented simply by standard addition method.

When y-intercept is zero, absolute value  $|x|=X$  becomes the result of quantitation. This time the below result was obtained.

$$y = 0 = 11030x + 216$$

$$X = |x| = 216/11030 = 0.020\%$$

GL Sciences disclaims any and all responsibility for any injury or damage which may be caused by this data directly or indirectly. We reserve the right to amend this information or data at any time and without any prior announcement.

**GL Sciences Inc. Japan**

22-1 Nishishinjuku 6-chome  
Shinjuku-ku, Tokyo  
163-1130, Japan

Phone: +81-3-5323-6620  
Fax: +81-3-5323-6621  
Email: [world@glsc.co.jp](mailto:world@glsc.co.jp)  
Web: [www.glsciences.com](http://www.glsciences.com)

**GL Sciences Inc. USA**

4733 Torrance Blvd. Suite 255  
Torrance, CA 90503  
USA

Phone: +1-310-265-4424  
Fax: +1-310-265-4425  
Email: [info@glsciencesinc.com](mailto:info@glsciencesinc.com)  
Web: [www.glsciencesinc.com](http://www.glsciencesinc.com)

**GL Sciences B.V.**

Dillenburgstraat 7C  
5652AM, Eindhoven  
The Netherlands

Phone: +31-40-254-9531  
Email: [info@glsciences.eu](mailto:info@glsciences.eu)  
Web: [www.glsciences.eu](http://www.glsciences.eu)

**GL Sciences (Shanghai) Limited**

Tower B, Room 2003  
Far East International Plaza  
No.317 Xianxia Road, Changning District  
Shanghai, China 200051

Phone: +86-21-62782272  
Email: [contact@glsciences.com.cn](mailto:contact@glsciences.com.cn)  
Web: [www.glsciences.com.cn](http://www.glsciences.com.cn)

**International Distributors**

Visit our Website at [www.glsciences.com/distributors](http://www.glsciences.com/distributors)