

Q 360

Innovation and Technology



FIBER CABLE TRAY CATALOG

- CF120 FIBER CABLE TRAY
- CF240 FIBER CABLE TRAY
- CF300 FIBER CABLE TRAY
- CF360 FIBER CABLE TRAY
- CF600 FIBER CABLE TRAY
- FIBER CABLE TRAY ACCESSORIES

FIBER CABLE TRAY STRAIGHT SECTION



Fiber cable trays is a system designed to protect and route fiber optic patch cords, multi-fiber cable assemblies, and intrafacility fiber cable (IFC) to and from fiber splice enclosures, fiber distribution frames and fiber optic terminal devices.

Features:

- The closed design protects the fiber optic cables from damage.
- Fiber duct is made from FV-0 fire-retardant material with smooth surface and good appearance.
- Offers excellent bend radius control and ensures fiber radius $\geq 40\text{mm}$.
- Movable cable exit kit is optional to satisfy the expanding request of data center.
- Different kinds of installation methods are available, such as ceiling mounting, cabinet top supporting or connecting with other cable trays.
- Can store fiber and satisfy the need for changing raceway direction.

Fiber Cable Tray Contents

Product

Part Number

CF120 Fiber Cable Tray-----006

CF120 Fiber Cable Tray	CF120
CF120 Fiber Cable Tray Cover	CF120-CVR
CF120 Connector	CF120-CNT
CF120 45° Horizontal Elbow	CF120-ELB45
CF120 45° Horizontal Elbow Cover	CF120-ELB45-CVR
CF120 90° Horizontal Elbow	CF120-ELB90
CF120 90° Horizontal Elbow Cover	CF120-ELB90-CVR
CF120 Horizontal Tee	CF120-TEE
CF120 Horizontal Tee Cover	CF120-TEE-CVR
CF120 Horizontal Cross	CF120-CRS
CF120 Horizontal Cross Cover	CF120-CRS-CVR
CF120 45° Internal Riser	CF120-IRS45
CF120 45° Internal Riser Cover	CF120-IRS45-CVR
CF120 45° External Riser	CF120-ERS45
CF120 45° External Riser Cover	CF120-ERS45-CVR
CF120 Universal Tee	CF120-APP
CF120 Vertical Tee	CF120-VTC
CF120 Trumpet	CF120-TSP
CF120 End Cap	CF120-TTR

CF240 Fiber Cable Tray-----016

CF240 Fiber Cable Tray	CF240
CF240 Fiber Cable Tray Cover	CF240-CVR
CF240 Connector	CF240-CNT
CF240 45° Horizontal Elbow	CF240-ELB45
CF240 45° Horizontal Elbow Cover	CF240-ELB45-CVR
CF240 90° Horizontal Elbow	CF240-ELB90
CF240 90° Horizontal Elbow Cover	CF240-ELB90-CVR
CF240 Horizontal Tee	CF240-TEE
CF240 Horizontal Tee Cover	CF240-TEE-CVR
CF240 Horizontal Cross	CF240-CRS
CF240 Horizontal Cross Cover	CF240-CRS-CVR
CF240 45° Internal Riser	CF240-IRS45
CF240 45° Internal Riser Cover	CF240-IRS45-CVR
CF240 45° External Riser	CF240-ERS45
CF240 45° External Riser Cover	CF240-ERS45-CVR
CF240 to CF120 Reducer	CF240-RDC120
CF240 to CF120 Reducer Cover	CF240-RDC120-CVR
CF240 Universal Tee	CF240-APP
CF240 to CF120 Vertical Tee	CF240-VTC120
CF240 to CF120 Horizontal Tee	CF240-HTC120
CF240 to CF120 Horizontal Tee Cover	CF240-HTC120-CVR
CF240 Trumpet	CF240-TSP
CF240 End Cap	CF240-TTR

CF300 Fiber Cable Tray-----028

CF300 Fiber Cable Tray	CF300
CF300 Fiber Cable Tray Cover	CF300-CVR
CF300 Connector	CF300-CNT
CF300 90° Horizontal Elbow	CF300-ELB90
CF300 90° Horizontal Elbow Cover	CF300-ELB90-CVR
CF300 Horizontal Tee	CF300-TEE
CF300 Horizontal Tee Cover	CF300-TEE-CVR
CF300 Horizontal Cross	CF300-CRS
CF360 Horizontal Cross Cover	CF300-CRS-CVR
CF300 45° Internal Riser	CF300-IRS45
CF300 45° External Riser	CF300-ERS45
CF300 Universal Tee	CF300-APP
CF300 to CF240 Reducer	CF300-RDC240
CF300 Trumpet	CF300-TSP
CF300 End Cap	CF300-TTR

CF360 Fiber Cable Tray-----034

CF360 Fiber Cable Tray	CF360
CF360 Fiber Cable Tray Cover	CF360-CVR
CF360 Connector	CF360-CNT
CF360 90° Horizontal Elbow	CF360-ELB90
CF360 90° Horizontal Elbow Cover	CF360-ELB90-CVR
CF360 Horizontal Tee	CF360-TEE
CF360 Horizontal Tee Cover	CF360-TEE-CVR
CF360 Horizontal Cross	CF360-CRS
CF360 Horizontal Cross Cover	CF360-CRS-CVR
CF360 45° Internal Riser	CF360-IRS45
CF360 45° Internal Riser Cover	CF360-IRS45-CVR
CF360 45° External Riser	CF360-ERS45
CF360 45° External Riser Cover	CF360-ERS45-CVR
CF360 Universal Tee	CF360-APP
CF360 to CF240 Horizontal Tee	CF360-RDC240
CF360 to CF240 Horizontal Tee Cover	CF360-RDC240-CVR
CF360 End Cap	CF360-TSP
CF360 Trumpet	CF360-TTR

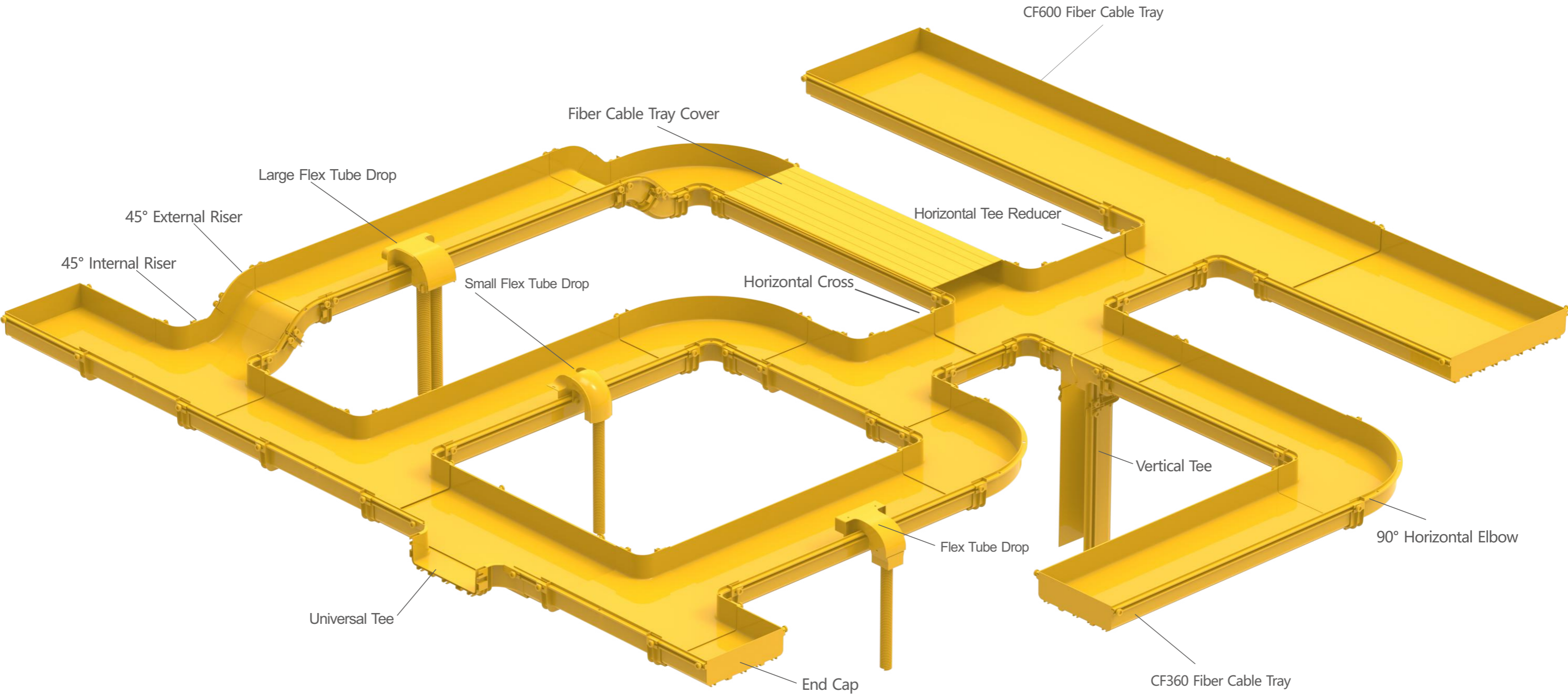
CF600 Fiber Cable Tray-----046

CF600 Fiber Cable Tray	CF600
CF600 Connector	CF600-CNT
CF600 90° Horizontal Elbow	CF600-ELB90
CF600 Horizontal Tee	CF600-TEE
CF600 to CF300 Horizontal Tee	CF600-HTC300
CF600 to CF360 Horizontal Tee	CF600-HTC360
CF600 End Cap	CF600-TTR

Fiber Cable Tray Accessories-----080

Small Flex Tube Drop	CF-OUTX
Flex Tube Drop	CF-TFKS56
Large Flex Tube Drop	CF-OUT120
M5 Screw And Nut	CF-ZYNUT
Tube	CF-PIPE42/56/80 X 1
CF120 End Cap With Embedded Hole	CF-TTR-CUT80/42/56
HANGING BAR	CF-BAR
CABINET TOP STAND	CF120/240/300/360-EFS
HANGING SET	CF120/240/300/360-HGS
L-TYPE SUPPORT	CF-L

FIBER CABLE TRAY



CF120 FIBER CABLE TRAY

CF120 FIBER CABLE TRAY

Default unit : mm

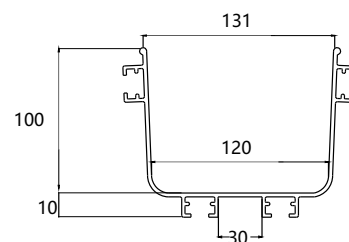
Part Number	Height	Width	Length	Weight
CF120	100	120	2000	4.60kg

P/N Definition :

◆CF120: CF means fiber cable tray; 120 means the width 120mm; the height is 100mm; HxW refers to inner size; the length is 2000mm per piece.

Instruction manuals :

◆Color: Yellow



Fiber Loading Capacity

2MM Fiber	3MM Fiber	Sectional View
955	424	50%
1433	636	75%
1910	848	100%

CF120 FIBER CABLE TRAY

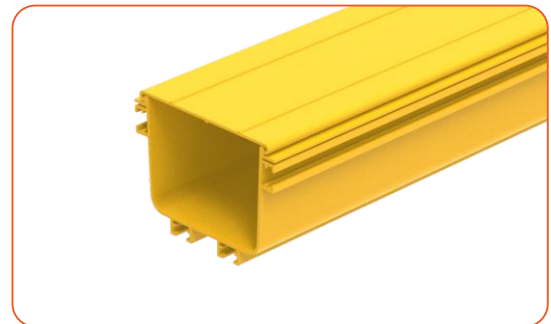
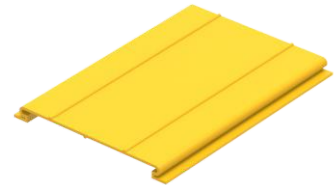
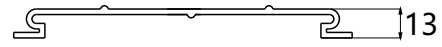
FIBER CABLE TRAY COVER

Default unit : mm

Part Number	Width	Length	Weight
CF120-CVR	120	2000	1.56kg

Instruction manuals :

- ◆Color: Yellow



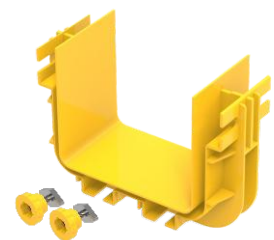
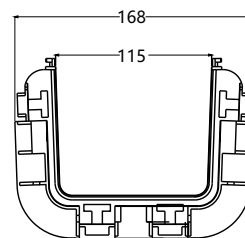
CONNECTOR

Default unit : mm

Part Number	Pack	Weight
CF120-CNT	60pcs	9.78kg

Instruction manuals :

- ◆Apply to: Connect straight sections,etc.
- ◆Include: CF120 Connector×1, M5 Screw and Nut x8
- ◆Suit for: CF120 Fiber Cable Tray



CF120 FIBER CABLE TRAY

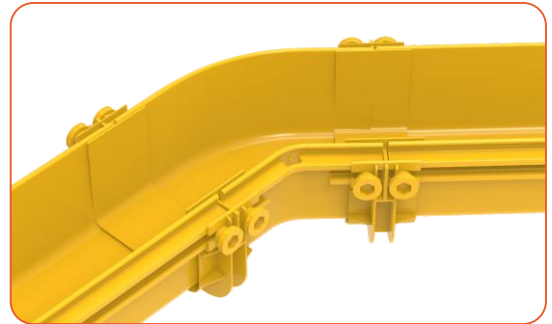
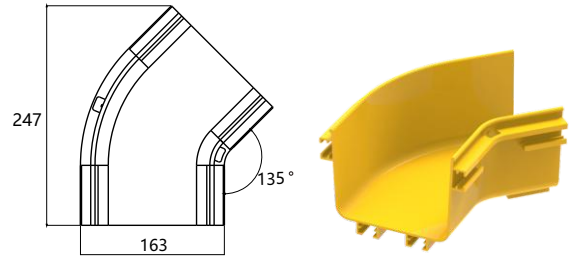
45° HORIZONTAL ELBOW

Default unit : mm

Part Number	Pack	Weight
CF120-ELB45	36pcs	14.40kg

Instruction manuals :

- ◆Apply to: 45° Corner Connection
- ◆Include: CF120 45° Horizontal Elbow ×1
- ◆Suit for: CF120 Fiber Cable Tray



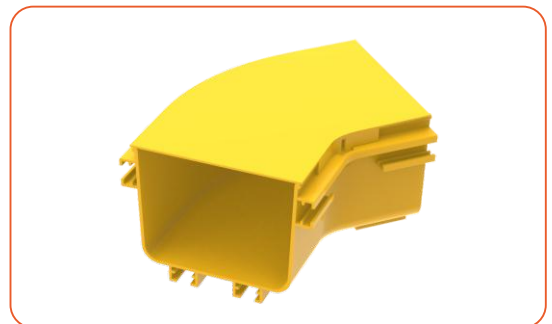
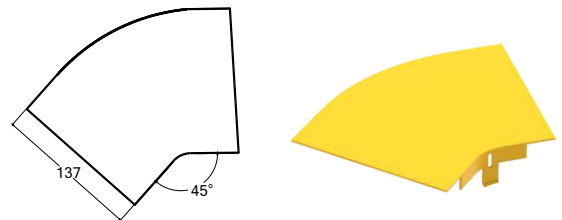
45° HORIZONTAL ELBOW COVER

Default unit : mm

Part Number	Pack	Weight
CF120-ELB45CVR	120pcs	12.00kg

Instruction manuals :

- ◆Apply to: Cover for 45° Corner Connection
- ◆Include: CF120 45° Horizontal Elbow Cover x 1



CF120 FIBER CABLE TRAY

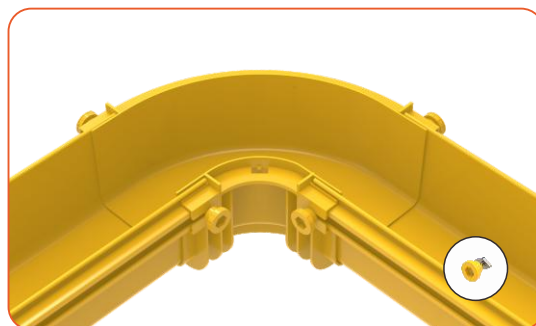
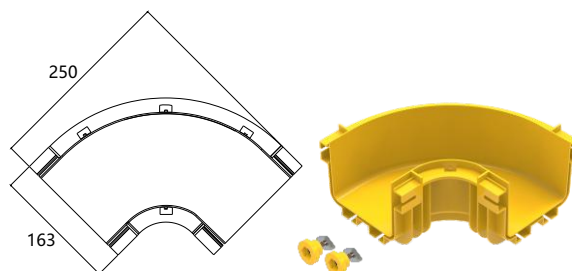
90° HORIZONTAL ELBOW

Default unit : mm

Part Number	Pack	Weight
CF120-ELB90	16pcs	8.80kg

Instruction manuals :

- ◆Apply to: 90° Corner Connection
- ◆Include: CF120 90°Horizontal Elbow x 1, M5 Screw and Nut x8
- ◆Feature: Equipped with Built-in Connectors
- ◆Suit for: CF120 Fiber Cable Tray



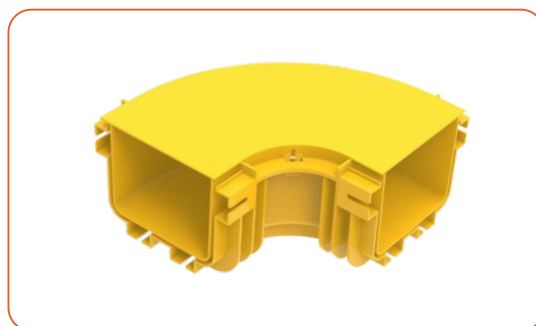
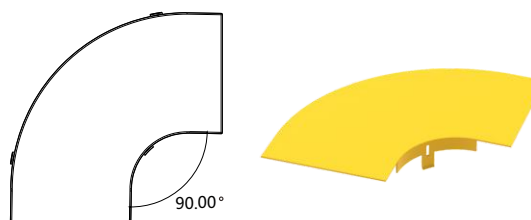
90° HORIZONTAL ELBOW COVER

Default unit : mm

Part Number	Pack	Weight
CF120-ELB90CVR	90pcs	11.70kg

Instruction manuals :

- ◆Apply to: 90° Corner Connection
- ◆Include: CF120 45° Horizontal Elbow Cover × 1



CF120 FIBER CABLE TRAY

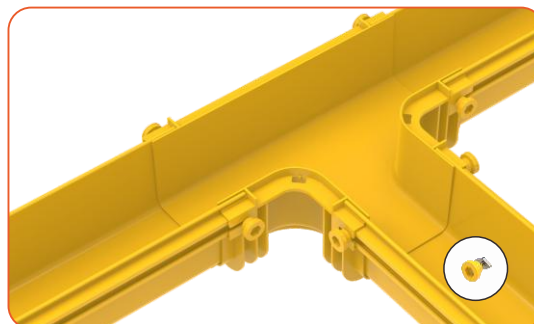
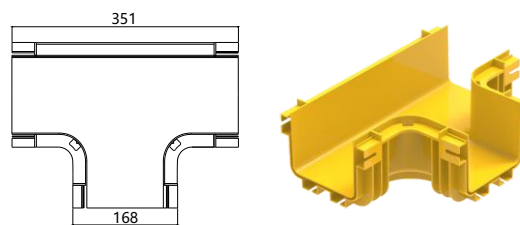
HORIZONTAL TEE

Default unit : mm

Part Number	Pack	Weight
CF120-TEE	10pcs	5.50kg

Instruction manuals :

- ◆Apply to: Connect Horizontal Tee
- ◆Include: CF120 Horizontal Tee×1, M5 Screw and Nut x12
- ◆Feature: Equipped with Built-in Connectors
- ◆Suit for: CF120 Fiber Cable Tray



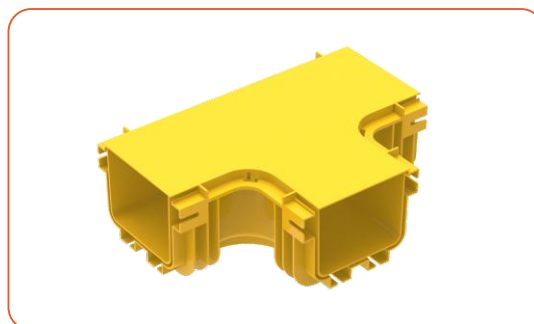
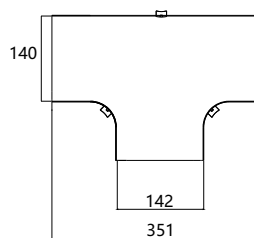
HORIZONTAL TEE COVER

Default unit : mm

Part Number	Pack	Weight
CF120-TEE-CVR	60pcs	7.80kg

Instruction manuals :

- ◆Apply to: Cover for CF120 Horizontal Tee
- ◆Include: CF120 Horizontal Tee×1



CF120 FIBER CABLE TRAY

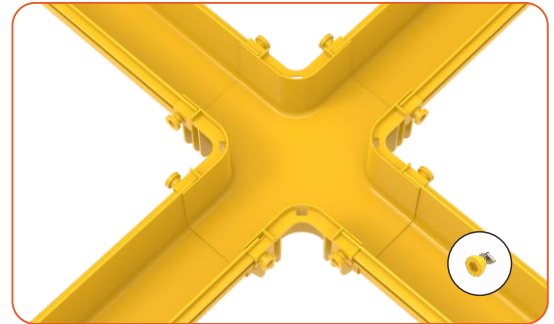
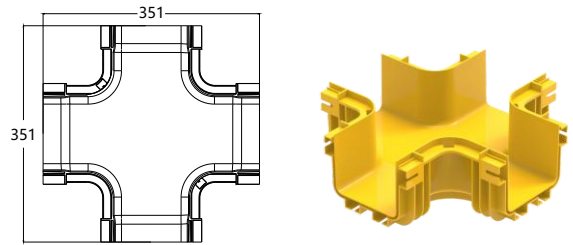
HORIZONTAL CROSS

Default unit : mm

Part Number	Pack	Weight
CF120-CRS	9pcs	5.76kg

Instruction manuals :

- ◆Apply to: Connect Horizontal Cross
- ◆Include: CF120 Horizontal Cross×1, M5 Screw and Nut x16
- ◆Feature: Equipped with Built-in Connectors
- ◆Suit for: CF120 Fiber Cable Tray



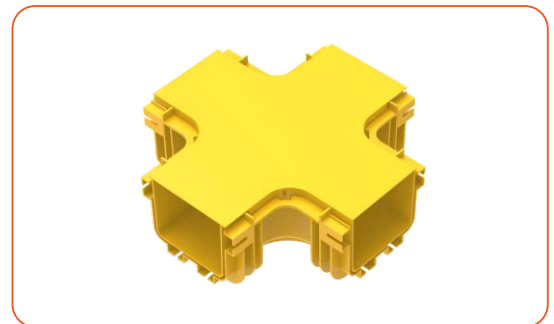
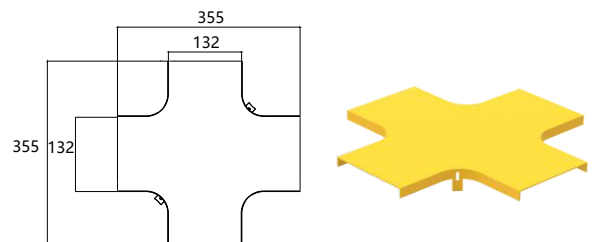
HORIZONTAL CROSS COVER

Default unit : mm

Part Number	Pack	Weight
CF120-CRS-CVR	40pcs	9.60kg

Instruction manuals :

- ◆Apply to: Cover for CF120 Horizontal Cross
- ◆Include: CF120 Horizontal Cross Cover×1



CF120 FIBER CABLE TRAY

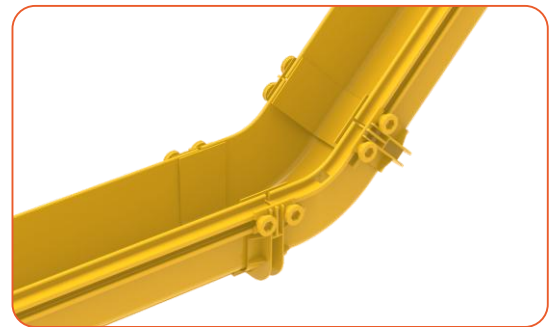
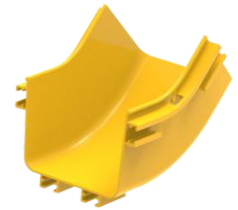
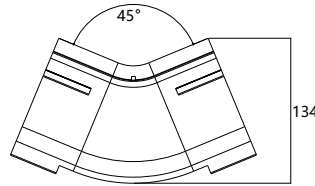
45° INTERNAL RISER

Default unit : mm

Part Number	Pack	Weight
CF120-IRS45	38pcs	11.02kg

Instruction manuals :

- ◆Apply to: Raises or lowers cable tray elevation, used in combination with 45° external riser
- ◆Include: CF120 45° Internal Riser x 1
- ◆Suit for: CF120 Fiber Cable Tray



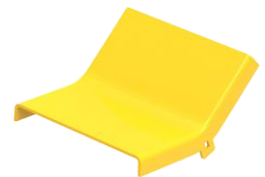
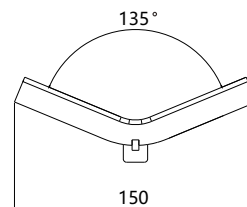
45° INTERNAL RISER COVER

Default unit : mm

Part Number	Pack	Weight
CF120-IRS45-CVR	200pcs	14.00kg

Instruction manuals :

- ◆Apply to: Cover for CF120 45° Internal Riser
- ◆Include: CF120 45° Internal Riser Cover x 1



CF120 FIBER CABLE TRAY

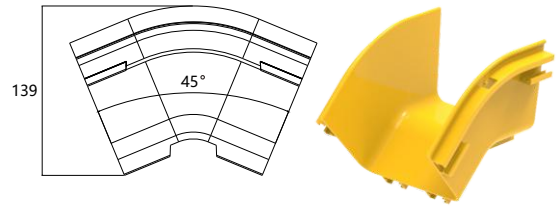
45° EXTERNAL RISER

Default unit : mm

Part Number	Pack	Weight
CF120-ERS45	56pcs	13.44kg

Instruction manuals :

- ◆Apply to: Raises or lowers cable tray elevation, used in combination with 45° internal riser
- ◆Include: CF120 45° External Riser ×1
- ◆Suit for: CF120 Fiber Cable Tray



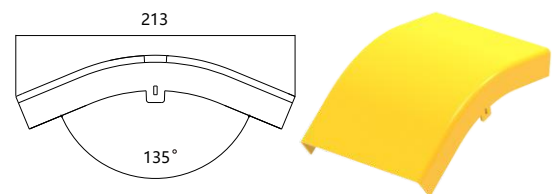
45° EXTERNAL RISER COVER

Default unit : mm

Part Number	Pack	Weight
CF120-ERS45-CVR	175pcs	14.00kg

Instruction manuals :

- ◆Apply to: Cover for CF120 45° External Riser
- ◆Include: CF120 45° External Riser Cover x 1



CF120 FIBER CABLE TRAY

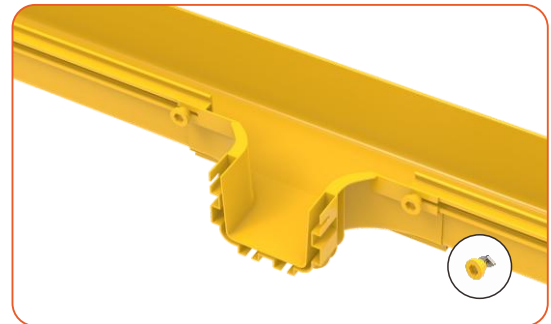
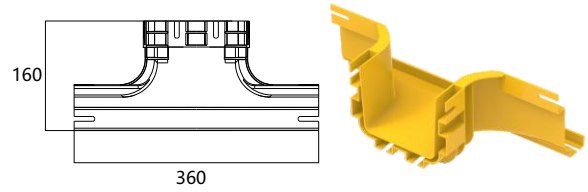
UNIVERSAL TEE

Default unit : mm

Part Number	Pack	Weight
CF120-APP	20pcs	9.00kg

Instruction manuals :

- ◆Apply to: Connect side opening
- ◆Include: CF120 Universal Tee ×1, M5 Screw and Nut x8
- ◆Feature: Equipped with Built-in Connector
- ◆Suit for: CF120 Fiber Cable Tray



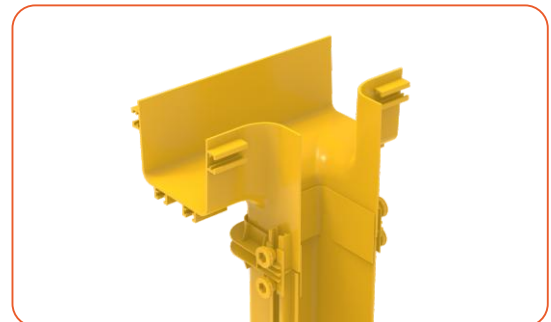
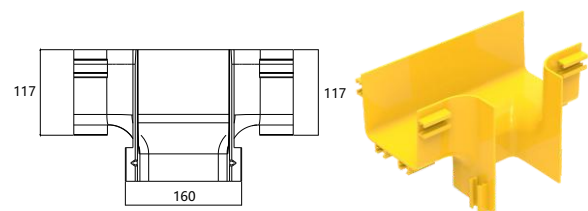
VERTICAL TEE

Default unit : mm

Part Number	Pack	Weight
CF120-VTC	10pcs	4.79kg

Instruction manuals :

- ◆ Apply to: Connects CF120 to CF120 vertical straight sections
- ◆Include: CF120 Vertical Tee x 1
- ◆Suit for: CF120 Fiber Cable Tray



CF120 FIBER CABLE TRAY

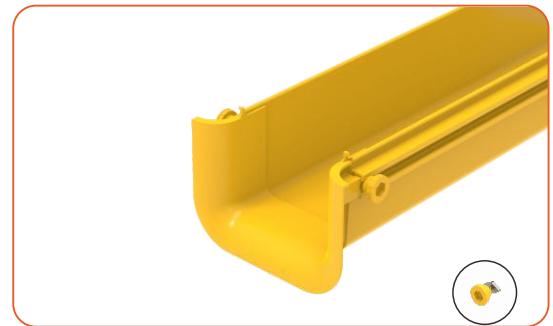
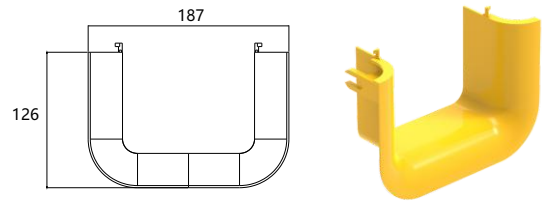
TRUMPET

Default unit : mm

Part Number	Pack	Weight
CF120-TSP	150pcs	20.40kg

Instruction manuals :

- ◆Apply to: Connection to straight section or large flex tube drop for cable drop-out
- ◆Include: Trumpet x 1, M5 Screw and Nut x 4
- ◆Feature: Bend radius protects cables against damage when dropping out.
- ◆Suit for: CF120 Fiber Cable Tray



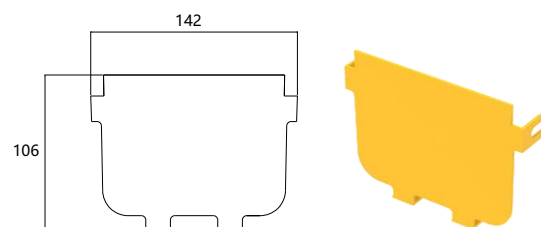
END CAP

Default unit : mm

Part Number	Pack	Weight
CF120-TTR	360pcs	14.40kg

Instruction manuals :

- ◆Apply to: Close the ends
- ◆Include: CF120 End Cap x 1, M5 Screw and Nut x 4
- ◆Feature: Closed design with clean and simple style
- ◆Suit for: CF120 Fiber Cable Tray



CF240 FIBER CABLE TRAY

CF240 FIBER CABLE TRAY

Default unit : mm

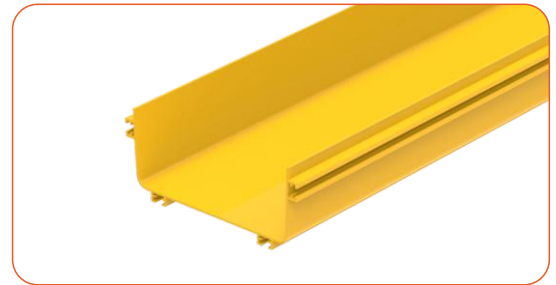
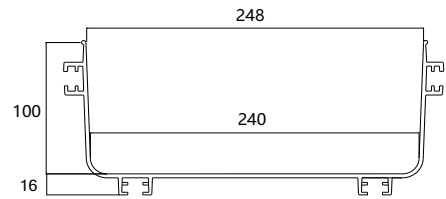
Part Number	Height	Width	Length	Weight
CF240	100	240	2000	5.84kg

P/N Definition :

◆CF240: CF means fiber cable tray; 240 means the width 240mm; the height is 100mm; HxW refers to inner size; the length is 2000mm per piece.

Instruction manuals :

◆Color: Yellow



Fiber Loading Capacity

2MM Fiber	3MM Fiber	Sectional View
1910	849	
2866	1273	
3821	1698	

CF240 FIBER CABLE TRAY

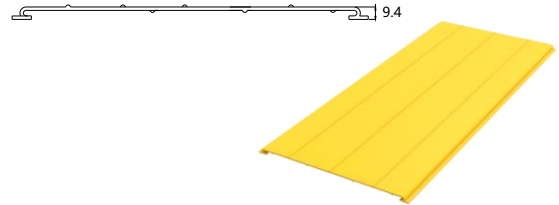
FIBER CABLE TRAY COVER

Default unit : mm

Part Number	Width	Length	Weight
CF240-CVR	240	2000	2.88kg

Instruction manuals :

- ◆Color: Yellow



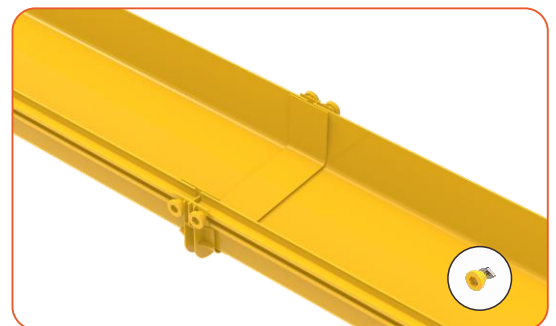
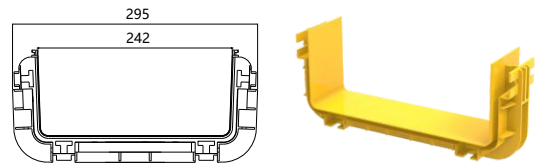
CONNECTOR

Default unit : mm

Part Number	Pack	Weight
CF240-CNT	38pcs	8.74kg

Instruction manuals :

- ◆Apply to: Connect straight sections, etc.
- ◆Include: CF240 Connector×1, M5 Screw and Nut x 8
- ◆Suit for: CF240 Fiber Cable Tray



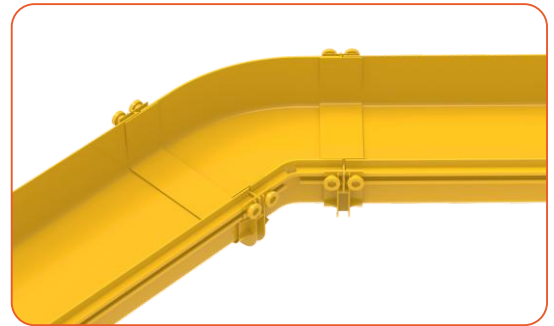
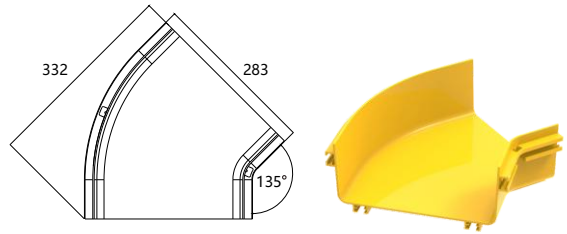
45° HORIZONTAL ELBOW

Default unit : mm

Part Number	Pack	Weight
CF240-ELB45	18pcs	12.60kg

Instruction manuals :

- ◆Apply to: 45° Corner Connection
- ◆Include: CF240 45° Horizontal Elbow x1
- ◆Suit for: CF240 Fiber Cable Tray



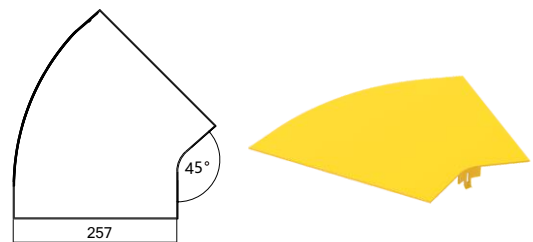
45° HORIZONTAL ELBOW COVER

Default unit : mm

Part Number	Pack	Weight
CF240-ELB45CVR	60pcs	30.00kg

Instruction manuals :

- ◆Apply to: Cover for CF240 45° Horizontal Elbow
- ◆Include: CF240 45° Horizontal Elbow Cover x 1



CF240 FIBER CABLE TRAY

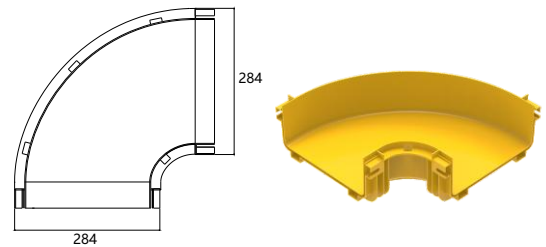
90° HORIZONTAL ELBOW

Default unit : mm

Part Number	Pack	Weight
CF240-ELB90	9	7.56kg

Instruction manuals :

- ◆Apply to: 90° Corner Connection
- ◆Include: CF240 90°Horizontal Elbow x1, M5 Screw and Nut x 8
- ◆Features: Equipped with Built-in Connectors
- ◆Suit for: CF240 Fiber Cable Tray



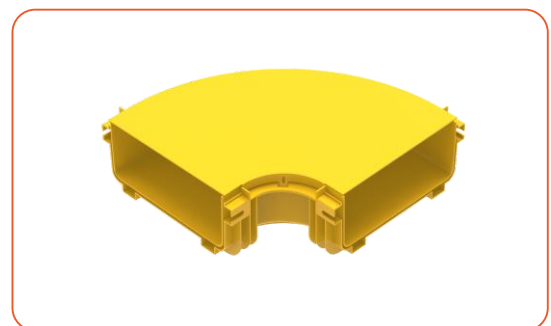
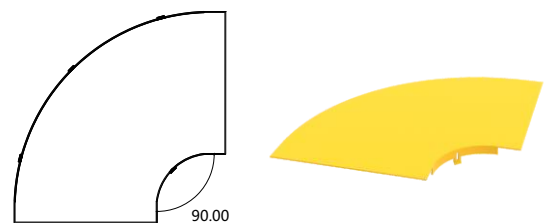
90° HORIZONTAL ELBOW COVER

Default unit : mm

Part Number	Pack	Weight
CF240-ELB90CVR	38	12.92kg

Instruction manuals :

- ◆Apply to: Cover for CF240 90° Horizontal Elbow
- ◆Include: 90° Horizontal Elbow Cover x1



CF240 FIBER CABLE TRAY

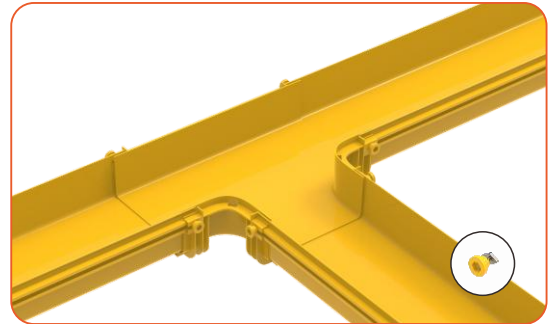
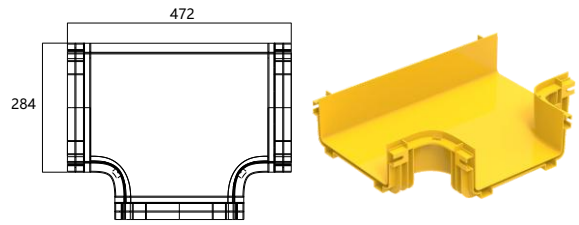
HORIZONTAL TEE

Default unit : mm

Part Number	Pack	Weight
CF240-TEE	8	8.56kg

Instruction manuals :

- ◆Apply to: Connect Horizontal Tee
- ◆Include: CF240 Horizontal Tee x 1, M5 Screw and Nut x 12
- ◆Features: Equipped with Built-in Connectors
- ◆Suit for: CF240 Fiber Cable Tray



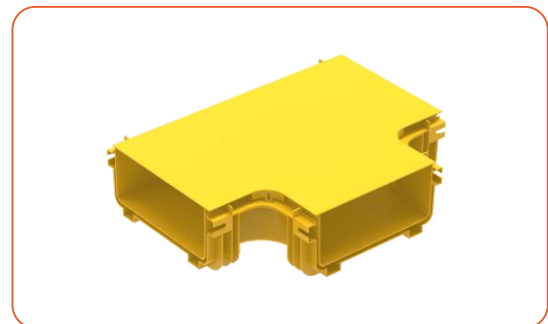
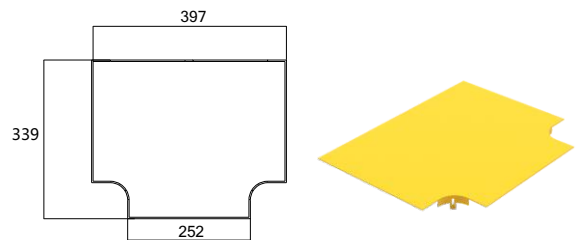
HORIZONTAL TEE COVER

Default unit : mm

Part Number	Pack	Weight
CF240-TEE-CVR	30	16.80kg

Instruction manuals :

- ◆Apply to: Cover for CF240 Horizontal Tee
- ◆Include: CF240 Horizontal Tee Cover x 1



CF240 FIBER CABLE TRAY

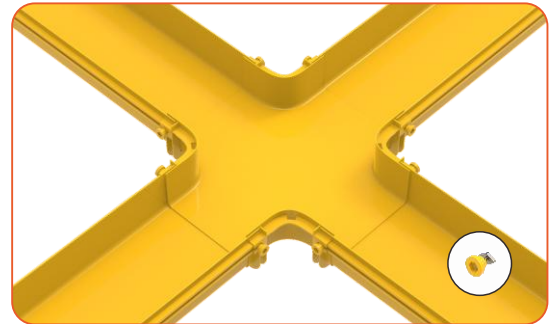
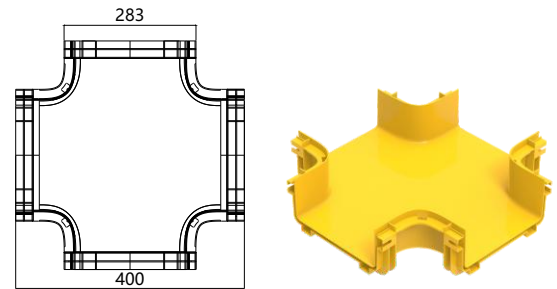
HORIZONTAL CROSS

Default unit : mm

Part Number	Pack	Weight
CF240-CRS	8	10.56kg

Instruction manuals :

- ◆Apply to: Connect Horizontal Cross
- ◆Include: CF240 Horizontal Cross x 1, M5 Screw and Nut x 16
- ◆Features: Equipped with Built-in Connectors
- ◆Suit for: CF240 Fiber Cable Tray



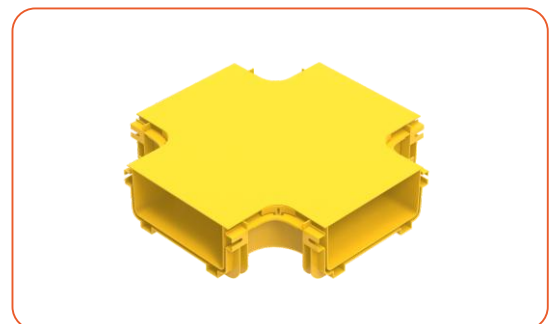
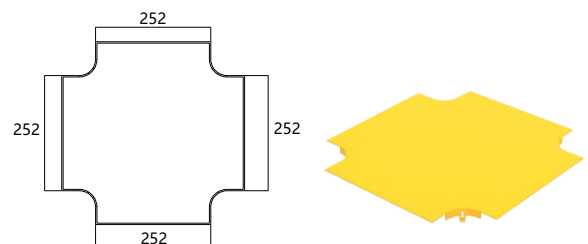
HORIZONTAL CROSS COVER

Default unit : mm

Part Number	Pack	Weight
CF240-CRS-CVR	28	15.40kg

Instruction manuals :

- ◆Apply to: Cover for CF240 Horizontal Cross
- ◆Include: CF240 Horizontal Cross Cover x 1



CF240 FIBER CABLE TRAY

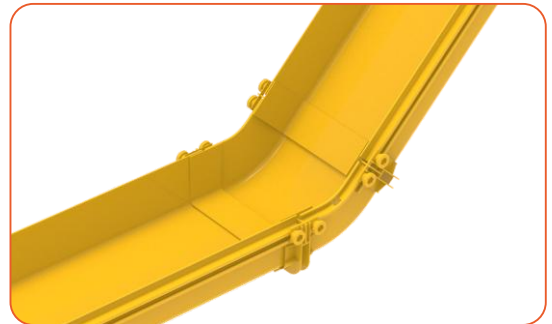
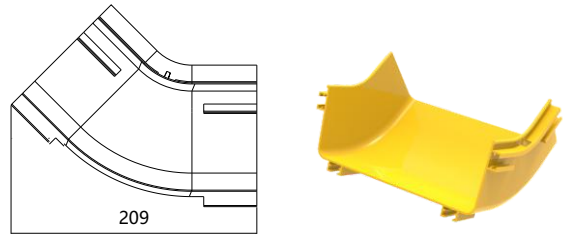
45° INTERNAL RISER

Default unit : mm

Part Number	Pack	Weight
CF240-IRS45	20	7.40kg

Instruction manuals :

- ◆Apply to: Raises or lowers cable tray elevation, used in combination with 45° external riser
- ◆Include: CF240 45° Internal Riser x 1
- ◆Suit for: CF240 Fiber Cable Tray



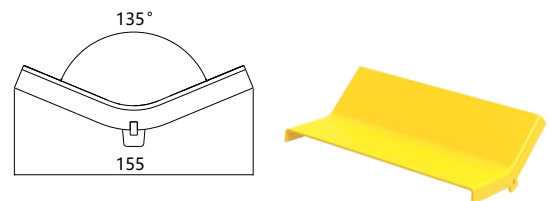
45° INTERNAL RISER COVER

Default unit : mm

Part Number	Pack	Weight
CF240-IRS45-CVR	100	12.00kg

Instruction manuals :

- ◆Apply to: Cover for CF240 45° Internal Riser
- ◆Include: CF240 45° Internal Riser Cover x 1



CF240 FIBER CABLE TRAY

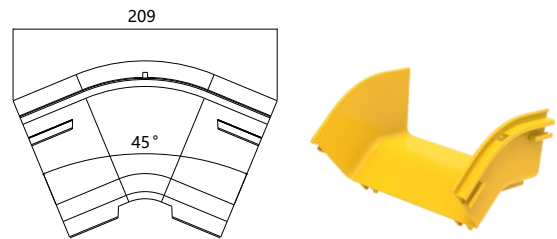
45° EXTERNAL RISER

Default unit : mm

Part Number	Pack	Weight
CF240-ERS45	28	8.68kg

Instruction manuals :

- ◆Apply to: Raises or lowers cable tray elevation, used in combination with 45° internal riser
- ◆Include: CF240 External Riser 45°×1
- ◆Suit for: CF240 Fiber Cable Tray



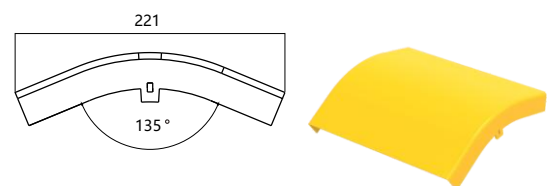
45° EXTERNAL RISER COVER

Default unit : mm

Part Number	Pack	Weight
CF240-ERS45-CVR	80	14.40kg

Instruction manuals :

- ◆Apply to: Cover for CF240 45° External Riser
- ◆Include: CF240 45° External Riser Cover x 1



CF240 FIBER CABLE TRAY

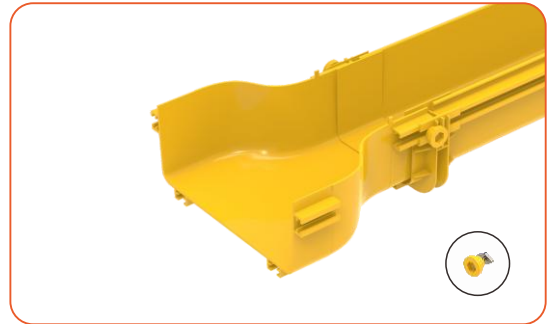
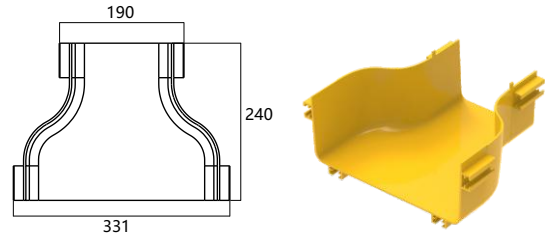
CF240 TO CF120 REDUCER

Default unit : mm

Part Number	Pack	Weight
CF240-RDC120	25	8.25kg

Instruction manuals :

- ◆Apply to: Horizontal Connection for CF240 to CF120 Reducing
- ◆Include: Horizontal Connection for CF240 to CF120 Reducer×1
- ◆Suit for: CF240 to CF120 Fiber Cable Tray



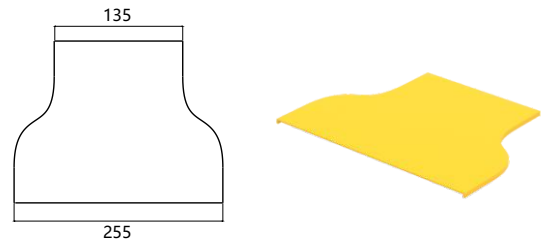
CF240 TO CF120 REDUCER COVER

Default unit : mm

Part Number	Pack	Weight
CF240-RDC120-CVR	180	21.60kg

Instruction manuals :

- ◆Apply to: Cover for CF240 to CF120 Reducer
- ◆Include: CF240 to CF120 Reducer Cover×1



CF240 FIBER CABLE TRAY

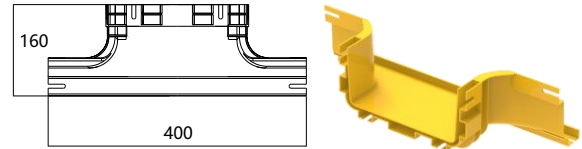
CF240 UNIVERSAL TEE

Default unit : mm

Part Number	Pack	Weight
CF240-APP	20	9.00kg

Instruction manuals :

- ◆Apply to: CF240 Side Opening Connection
- ◆Include: CF240 Universal Tee × 1, M5 Screw and Nut x8,
- ◆Features: Equipped with Built-in Connector
- ◆Suit for: CF240 Fiber Cable Tray



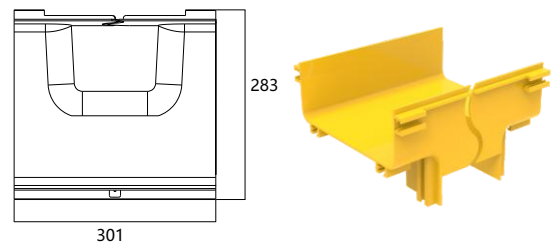
CF240 TO CF120 VERTICAL TEE

Default unit : mm

Part Number	Pack	Weight
CF240-VTC120	7	4.06kg

Instruction manuals :

- ◆Apply to: Connect CF240 to CF120 Vertical Straight Sections
- ◆Include: CF240 to CF120 Vertical Tee×1
- ◆Suit for: CF240 to CF120 Fiber Cable Tray



CF240 FIBER CABLE TRAY

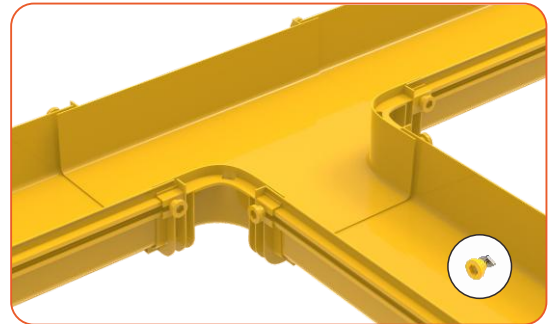
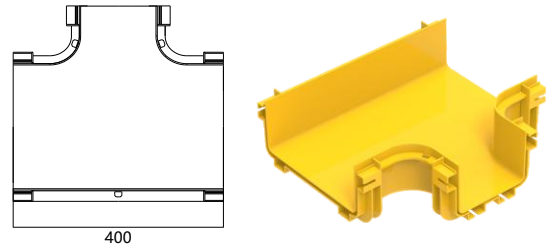
CF240 TO CF120 HORIZONTAL TEE

Default unit : mm

Part Number	Pack	Weight
CF240-HTC120	8	6.88kg

Instruction manuals :

- ◆Apply to: Horizontal Tee Connections for CF240 to CF120 Fiber Cable Tray
- ◆Include: CF240 to CF120 Horizontal Tee×1, M5 Screw and Nut x 12
- ◆Suit for: CF240 to CF120 Fiber Cable Tray



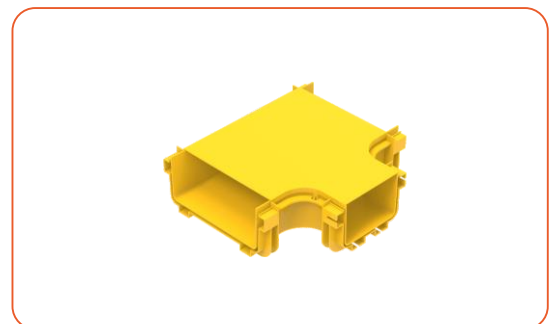
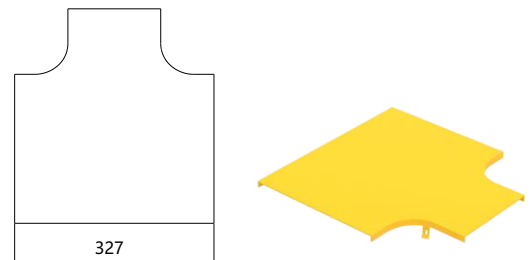
CF240 TO CF120 HORIZONTAL TEE COVER

Default unit : mm

Part Number	Pack	Weight
CF240-HTC120-CVR	32	11.30kg

Instruction manuals :

- ◆Apply to: Cover for CF240 to CF120 Horizontal Tee
- ◆Include: CF240 to CF120 Horizontal Tee Cover×1



CF240 FIBER CABLE TRAY

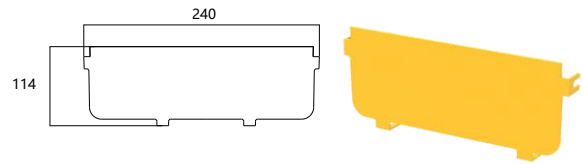
END CAP

Default unit : mm

Part Number	Pack	Weight
CF240-TTR	200	12.00kg

Instruction manuals :

- ◆Apply to: Close the ends
- ◆Include: CF240 End Cap×1, M5 Screw and Nut x 4
- ◆Suit for: CF240 Fiber Cable Tray



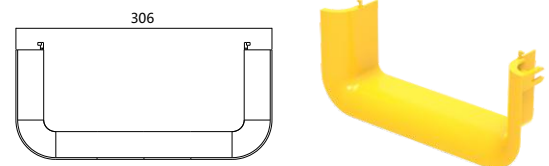
TRUMPET

Default unit : mm

Part Number	Pack	Weight
CF240-TSP	60pcs	6.6kg

Instruction manuals :

- ◆Apply to: Connection to straight section or large flex tube drop for cable drop-out.
- ◆Include: Trumpet x 1, M5 Screw and Nut x 4
- ◆Feature: Bend radius protects cables against damage when dropping out.
- ◆Suit for: CF240 Fiber Cable Tray



CF300 FIBER CABLE TRAY

Default unit : mm

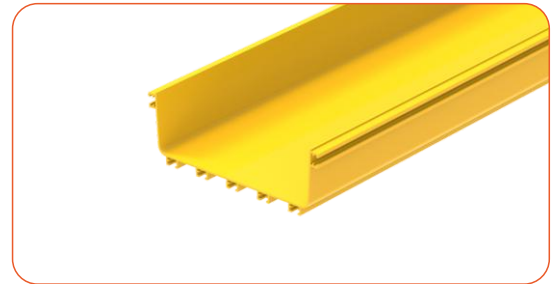
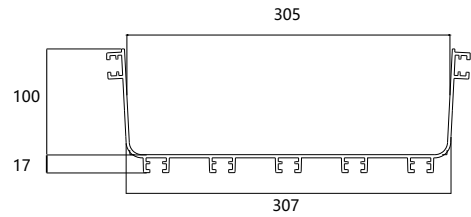
Part Number	Height	Width	Length	Weight
CF300	100	300	2000	7.42kg

P/N Definition :

◆CF300: CF means fiber cable tray; 300 means the width 300mm; the height is 100mm; HxW refers to inner size; the length is 2000mm per piece.

Instruction manuals :

◆Color: Yellow



Fiber Loading Capacity

2MM Fiber	3MM Fiber	Sectional View
2370	1055	
3556	1578	
5136	2106	

CF300 FIBER CABLE TRAY

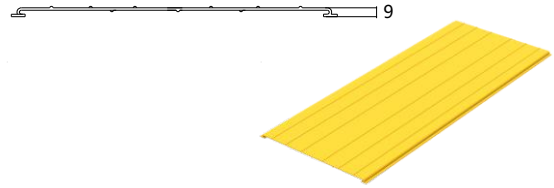
FIBER CABLE TRAY COVER

Default unit : mm

Part Number	Width	Length	Weight
CF300-CVR	300	2000	3.25kg

Instruction manuals :

- ◆Color: Yellow



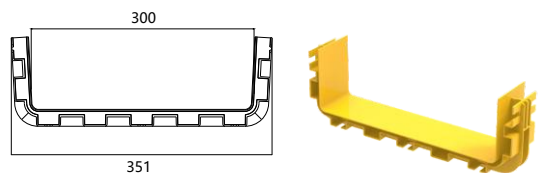
CONNECTOR

Default unit : mm

Part Number	Pack	Weight
CF300-CNT	26	15.34kg

Instruction manuals :

- ◆Apply to: Connect straight sections, etc.
- ◆Include: CF300 Connector×1, M5 Screw and Nut x 10
- ◆Suit for: CF300 Fiber Cable Tray



CF300 FIBER CABLE TRAY

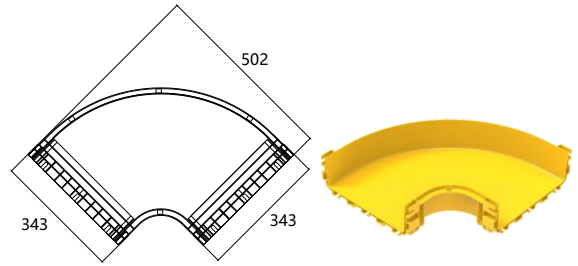
90° HORIZONTAL ELBOW

Default unit : mm

Part Number	Pack	Weight
CF300-ELB90	4	5.36kg

Instruction manuals :

- ◆Apply to: 90° Corner Connection
- ◆Include: CF300 90° Horizontal Elbow x 1, M5 Screw and Nut x 10
- ◆Features: Equipped with Built-in Connectors
- ◆Suit for: CF300 Fiber Cable Tray



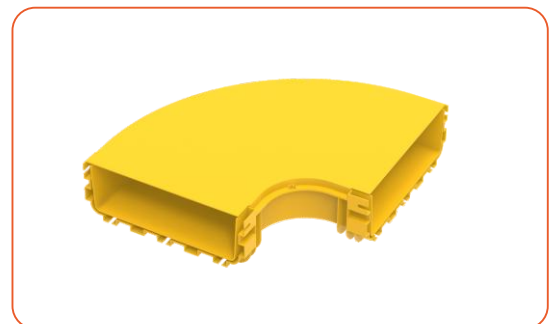
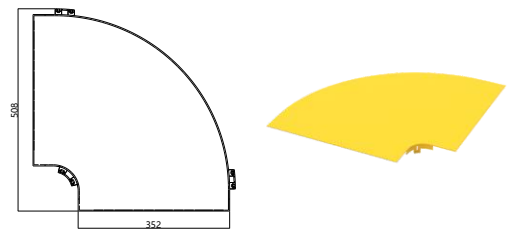
90° HORIZONTAL ELBOW COVER

Default unit : mm

Part Number	Pack	Weight
CF300-ELB90-CVR	24	11.8kg

Instruction manuals :

- ◆Apply to: Cover for CF300 Horizontal Tee
- ◆Include: CF300 Horizontal Tee Cover x 1
- ◆Features: Equipped with Built-in Connectors



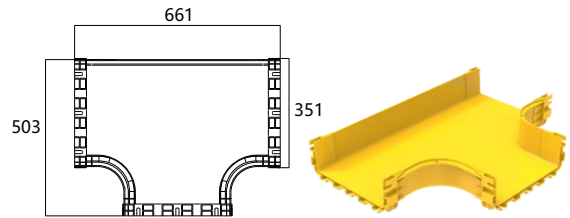
HORIZONTAL TEE

Default unit : mm

Part Number	Pack	Weight
CF300-TEE	6	11.94kg

Instruction manuals :

- ◆Apply to: Connect CF300 Horizontal Tee
- ◆Include: CF300 Horizontal Tee x 1, M5 Screw and Nut x 15
- ◆Features: Equipped with Built-in Connectors
- ◆Suit for: CF3000 Fiber Cable Tray



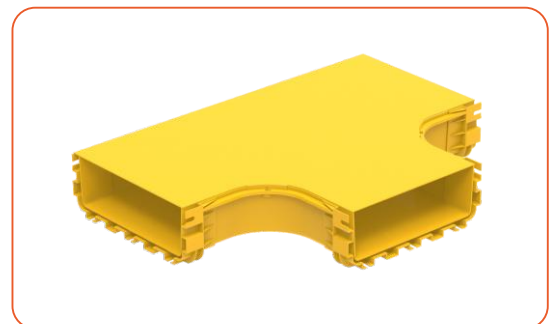
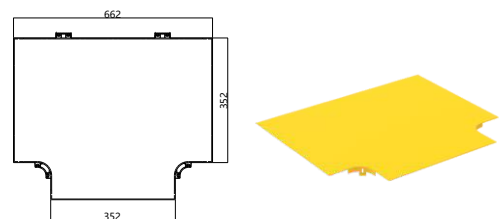
HORIZONTAL TEE COVER

Default unit : mm

Part Number	Pack	Weight
CF300-TEE-CVR	20	15.04kg

Instruction manuals :

- ◆Apply to: Cover for CF300 Horizontal Tee
- ◆Include: CF300 Horizontal Tee Cover x 1
- ◆Features: Equipped with Built-in Connectors



CF300 FIBER CABLE TRAY

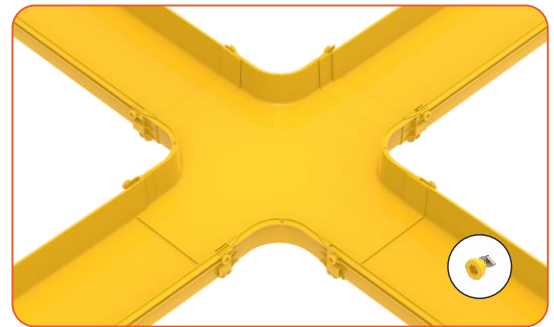
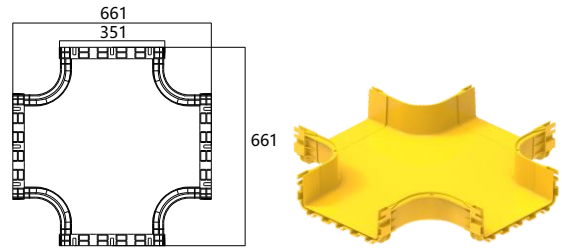
HORIZONTAL CROSS

Default unit : mm

Part Number	Pack	Weight
CF300-CRS	5	14.15kg

Instruction manuals :

- ◆Apply to: Connect Horizontal Cross
- ◆Include: CF300 Horizontal Cross x 1, M5 Screw and Nut x 20
- ◆Features: Equipped with Built-in Connectors
- ◆Suit for: CF300 Fiber Cable Tray



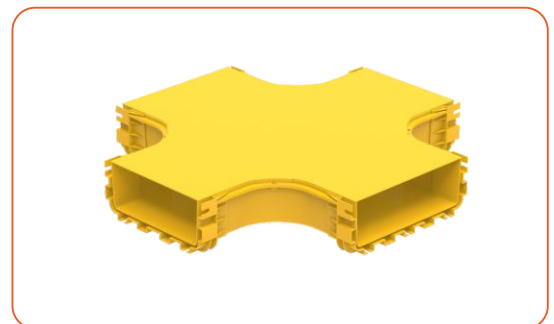
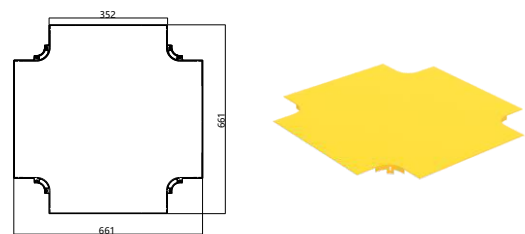
HORIZONTAL CROSS COVER

Default unit : mm

Part Number	Pack	Weight
CF300-CRS-CVR	16	13.71kg

Instruction manuals :

- ◆Apply to: Cover for CF300 Horizontal Cross
- ◆Include: CF300 Horizontal Cross Cover x 1
- ◆Features: Equipped with Built-in Connectors



CF300 FIBER CABLE TRAY

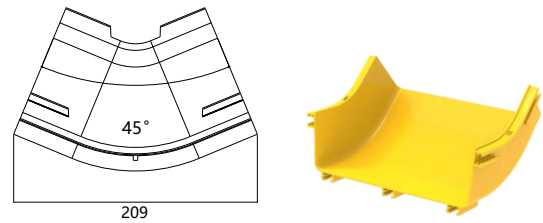
45° INTERNAL RISER

Default unit : mm

Part Number	Pack	Weight
CF300-IRS45	20	8.00kg

Instruction manuals :

- ◆Apply to: Raises or lowers cable tray elevation, used in combination with 45° external riser
- ◆Include: CF300 45° Internal Riser ×1
- ◆Features: Used for upper rising
- ◆Suit for: CF300 Fiber Cable Tray



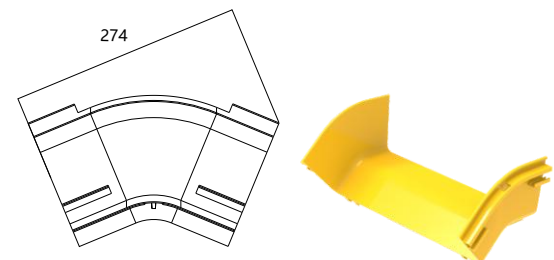
45° EXTERNAL RISER

Default unit : mm

Part Number	Pack	Weight
CF300-ERS45	18	5.40kg

Instruction manuals :

- ◆Apply to: Raises or lowers cable tray elevation, used in combination with 45° internal riser
- ◆Include: CF300 45° External Riser × 1
- ◆Features: Used for down rising
- ◆Suit for: CF300 Fiber Cable Tray



CF300 FIBER CABLE TRAY

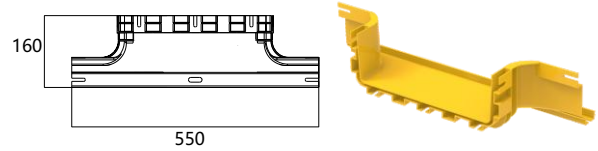
UNIVERSAL TEE

Default unit : mm

Part Number	Pack	Weight
CF300-APP	8	8.00kg

Instruction manuals :

- ◆Apply to: CF300 Side Opening Connection
- ◆Include: CF300 Universal Tee x 1, M5 Screw and Nut x10,
- ◆Features: Equipped with built-in Connector
- ◆Suit for: CF300 Fiber Cable Tray



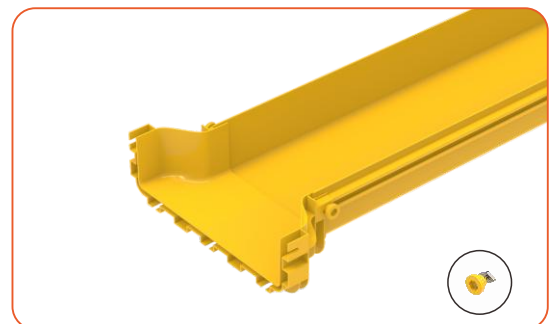
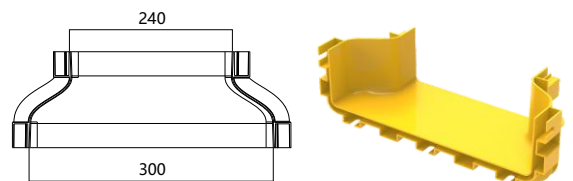
CF300 TO CF240 REDUCER

Default unit : mm

Part Number	Pack	Weight
CF300-RDC240	28	17.92kg

Instruction manuals :

- ◆Apply to: Horizontal Connection for CF300 to CF240 Reducing
- ◆Include: Horizontal Connection for CF300 to CF240, M5 Screw and Nut x 9
- ◆Features: Equipped with built-in connectors
- ◆Suit for: CF300 to CF240 Fiber Cable Tray



CF300 FIBER CABLE TRAY

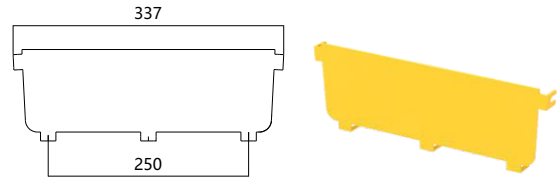
END CAP

Default unit : mm

Part Number	Pack	Weight
CF300-TTR	100	24.00kg

Instruction manuals :

- ◆Apply to: Close the ends
- ◆Include: CF300 End Cap×1, M5 Screw and Nut x 5
- ◆Features: Closed design with clean and simple style
- ◆Suit for: CF300 Fiber Cable Tray



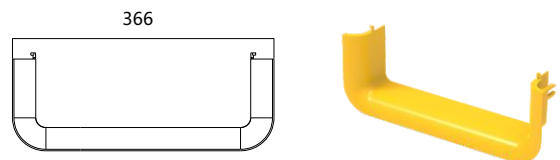
TRUMPET

Default unit : mm

Part Number	Pack	Weight
CF300-TSP	20	4.60kg

Instruction manuals :

- ◆Apply to: Connection to straight section or large movable cable exit for cable drop-out.
- ◆Include: Trumpet x 1, M5 Screw and Nut x 5
- ◆Feature: Bend radius protects cables against damage when dropping out.
- ◆Suit for: CF300 Fiber Cable Tray



CF360 FIBER CABLE TRAY

CF360 FIBER CABLE TRAY

Default unit : mm

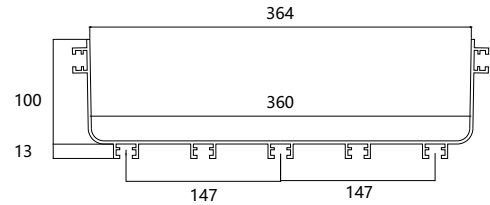
Part Number	Height	Width	Length	Weight
CF360	100	360	2000	8.08kg

P/N Definition :

◆CF360: CF means fiber cable tray; 360 means the width 360mm; the height is 100mm; HxW refers to inner size; the length is 2000mm per piece.

Instruction manuals :

◆Color: Yellow



Fiber Loading Capacity

2MM Fiber	3MM Fiber	Sectional View
2940	1308	<p>Diagram showing the sectional view of the tray with 50% fiber loading. The fiber bundle is represented by a yellow dotted pattern filling the bottom of the tray up to the 50% mark.</p>
4409	1957	<p>Diagram showing the sectional view of the tray with 75% fiber loading. The fiber bundle is represented by a yellow dotted pattern filling the bottom of the tray up to the 75% mark.</p>
6369	2611	<p>Diagram showing the sectional view of the tray with 100% fiber loading. The fiber bundle is represented by a yellow dotted pattern filling the bottom of the tray up to the 100% mark.</p>

CF360 FIBER CABLE TRAY

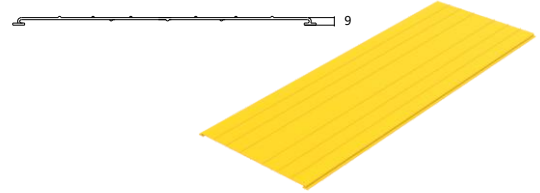
FIBER CABLE TRAY COVER

Default unit : mm

Part Number	Width	Length	Weight
CF360-CVR	360	2000	5.05kg

Instruction manuals :

- ◆Color: Yellow



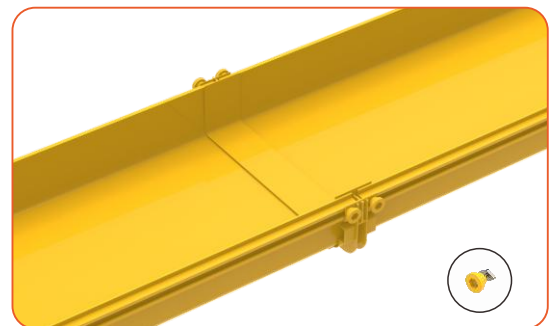
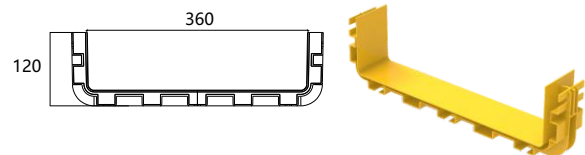
CONNECTOR

Default unit : mm

Part Number	Pack	Weight
CF360-CNT	38	25.08kg

Instruction manuals :

- ◆Apply to: Connect straight sections, etc.
- ◆Include: CF360 Connector×1, M5 Screw and Nut x 10
- ◆Suit for: CF360 Fiber Cable Tray



CF360 FIBER CABLE TRAY

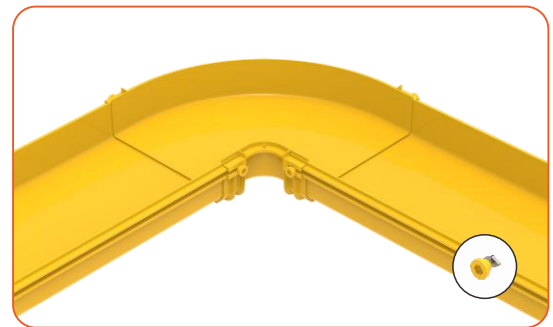
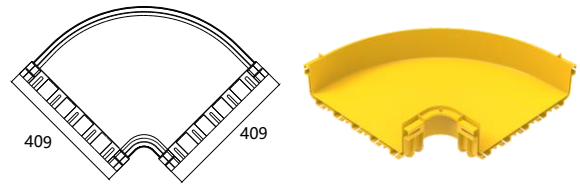
90° HORIZONTAL ELBOW

Default unit : mm

Part Number	Pack	Weight
CF360-ELB90	10	27.00kg

Instruction manuals :

- ◆Apply to: 90° Corner Connection
- ◆Include: CF360 90°Horizontal Elbow x 1, M5 Screw and Nut x 10
- ◆Features: Equipped with Built-in Connectors
- ◆Suit for: CF360 Fiber Cable Tray



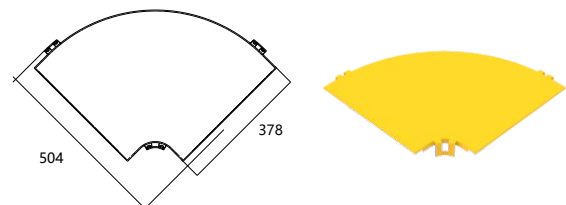
90° HORIZONTAL ELBOW COVER

Default unit : mm

Part Number	Pack	Weight
CF360-ELB90-CVR	20	22.40kg

Instruction manuals :

- ◆Apply to: Cover for CF360 90° Horizontal Elbow
- ◆Include: CF360 90° Horizontal Elbow Cover x 1



CF360 FIBER CABLE TRAY

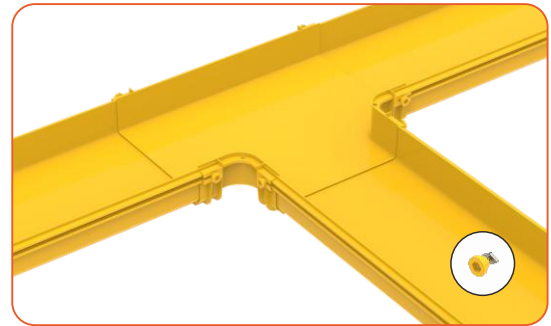
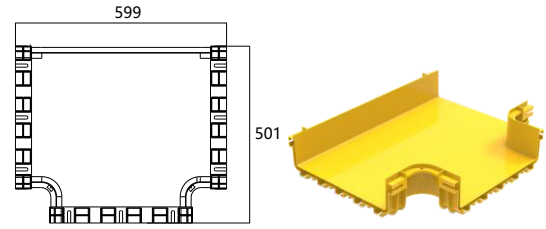
HORIZONTAL TEE

Default unit : mm

Part Number	Pack	Weight
CF360-TEE	10	27.00kg

Instruction manuals :

- ◆Apply to: Connect Horizontal Tee
- ◆Include: CF360 Horizontal Tee×1, M5 Screw and Nut x 15
- ◆Feature: Equipped with Built-in Connectors
- ◆Suit for: CF360 Fiber Cable Tray



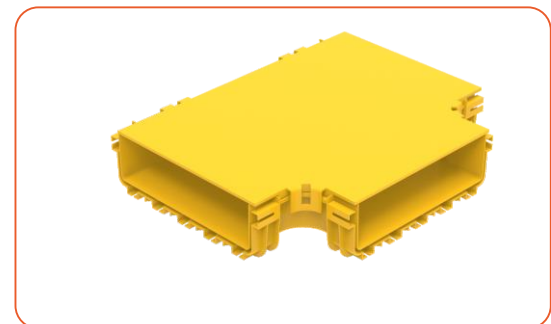
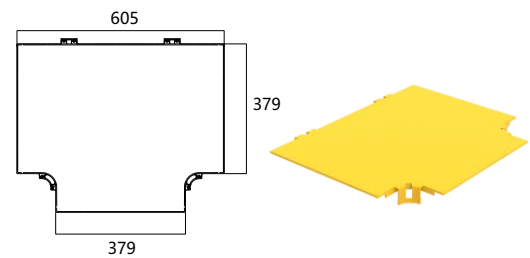
HORIZONTAL TEE COVER

Default unit : mm

Part Number	Pack	Weight
CF360-TEE-CVR	17	22.40kg

Instruction manuals :

- ◆Apply to: Cover for CF360 Horizontal Tee
- ◆Include: CF360 Horizontal Tee Cover x 1



CF360 FIBER CABLE TRAY

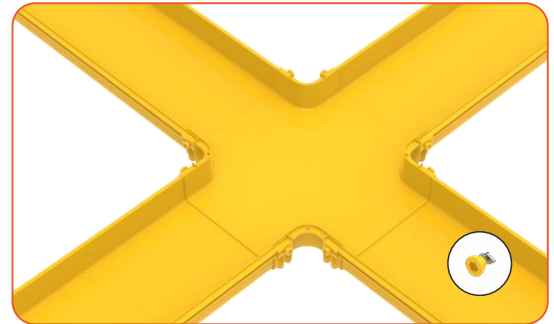
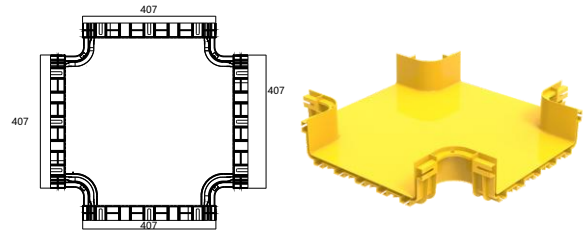
HORIZONTAL CROSS

Default unit : mm

Part Number	Pack	Weight
CF360-CRS	10	31.00kg

Instruction manuals :

- ◆Apply to: Connect Horizontal Cross
- ◆Include: CF360 Horizontal Cross×1, M5 Screw and Nut x 20
- ◆Feature: Equipped with Built-in Connectors
- ◆Suit for: CF360 Fiber Cable Tray



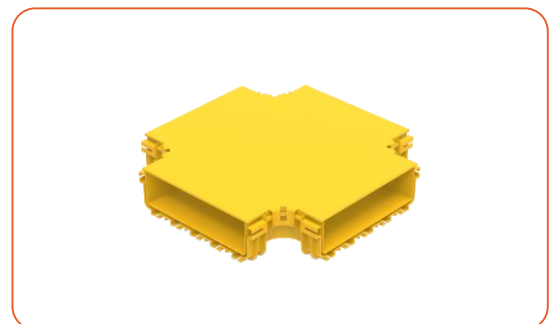
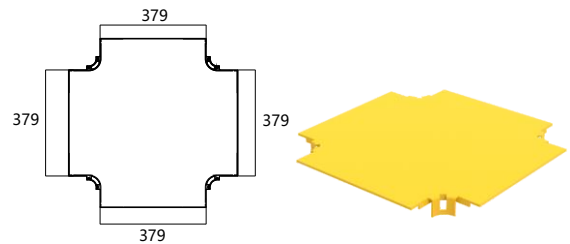
HORIZONTAL CROSS COVER

Default unit : mm

Part Number	Pack	Weight
CF360-CRS-CVR	17	23.12kg

Instruction manuals :

- ◆Apply to: Cover for CF360 Horizontal Cross
- ◆Include: CF360 Horizontal Cross Cover×1



CF360 FIBER CABLE TRAY

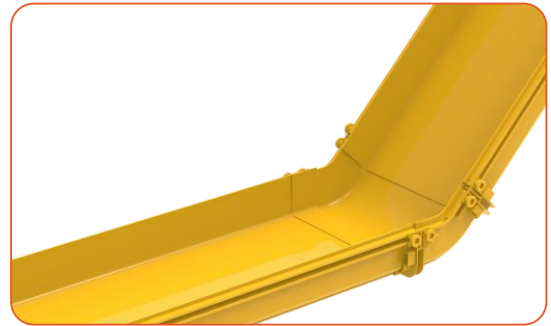
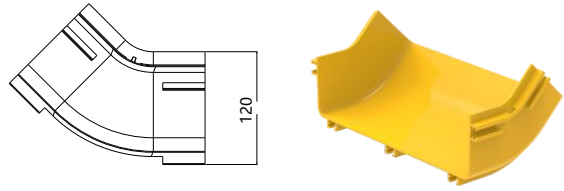
45° INTERNAL RISER

Default unit : mm

Part Number	Pack	Weight
CF360-IRS45	15	6.90kg

Instruction manuals :

- ◆Apply to: Raises or lowers cable tray elevation, used in combination with 45° external riser
- ◆Include: CF360 45° Internal Riser x 1
- ◆Suit for: CF360 Fiber Cable Tray



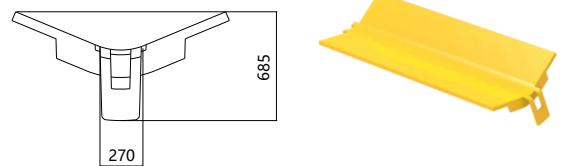
45° INTERNAL RISER COVER

Default unit : mm

Part Number	Pack	Weight
CF360-IRS45-CVR	44	11.00kg

Instruction manuals :

- ◆Apply to: Cover for CF360 45° Internal Riser
- ◆Include: CF360 45° Internal Riser Cover x 1



CF360 FIBER CABLE TRAY

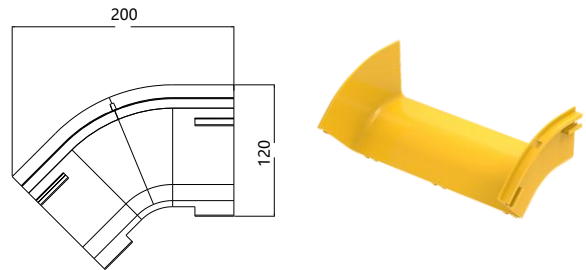
45° EXTERNAL RISER

Default unit : mm

Part Number	Pack	Weight
CF360-ERS45	20	7.30kg

Instruction manuals :

- ◆Apply to: Raises or lowers cable tray elevation, used in combination with 45° internal riser
- ◆Include: CF360 45° External Riser ×1
- ◆Suit for: CF360 Fiber Cable Tray



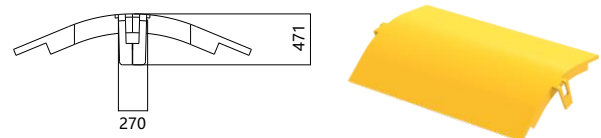
45° EXTERNAL RISER COVER

Default unit : mm

Part Number	Pack	Weight
CF360-ERS45-CVR	30	11.40kg

Instruction manuals :

- ◆Apply to: Cover for CF360 45° External Riser
- ◆Include: CF360 45° External Riser Cover x 1



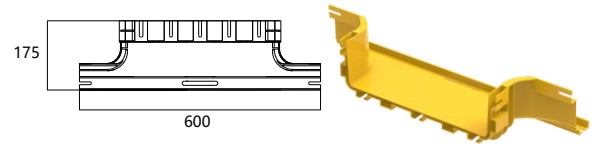
CF360 UNIVERSAL TEE

Default unit : mm

Part Number	Pack	Weight
CF360-APP	12	9.60kg

Instruction manuals :

- ◆Apply to: CF360 Side Opening Connection
- ◆Include: CF 360 Universal Tee × 1, M5 Screw and Nut x10
- ◆Features: Equipped with Built-in Connector
- ◆Suit for: CF360 Fiber Cable Tray



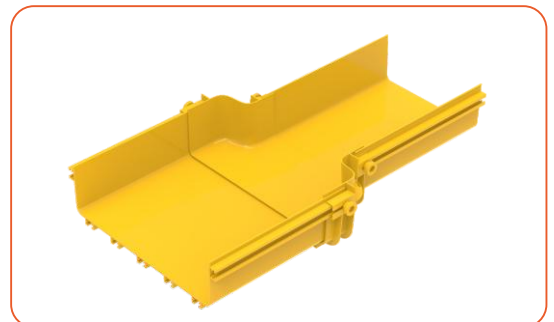
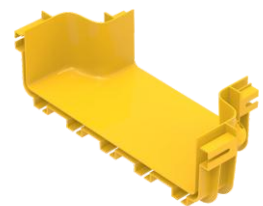
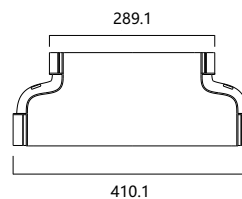
CF360 TO CF240 HORIZONTAL TEE

Default unit : mm

Part Number	Pack	Weight
CF360-HTC240	15	7.05kg

Instruction manuals :

- ◆Apply to: Horizontal Tee Connections for CF360 to CF240 Fiber Cable Tray
- ◆Include: CF360 to CF240 Horizontal Tee×1, M5 Screw and Nut x 12
- ◆Suit for: CF360 to CF240 Fiber Cable Tray



CF360 FIBER CABLE TRAY

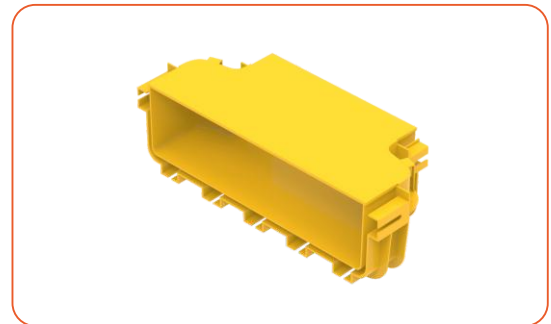
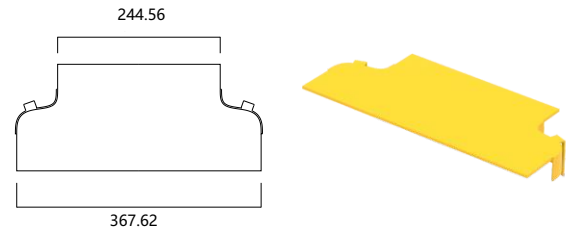
CF360 TO CF240 HORIZONTAL TEE COVER

Default unit : mm

Part Number	Pack	Weight
CF360-HTC240-CVR	40	9.00kg

Instruction manuals :

- ◆Apply to: Cover for CF360 to CF240 Horizontal Tee
- ◆Include: CF360 to CF240 Horizontal Tee Cover×1



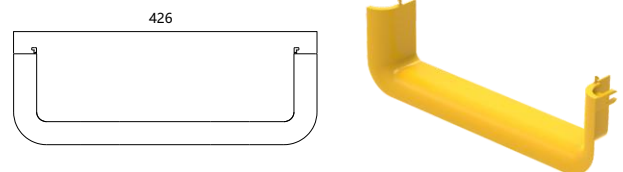
END CAP

Default unit : mm

Part Number	Pack	Weight
CF360-TTR	180	20.70kg

Instruction manuals :

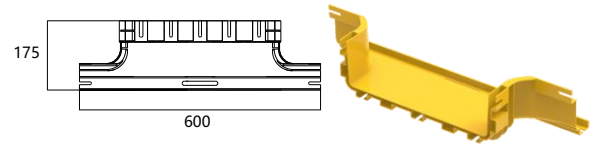
- ◆Apply to: Close the ends
- ◆Include: CF360 End Cap×1, M5 Screw and Nut x 4
- ◆Suit for: CF360 Fiber Cable Tray



Part Number	Pack	Weight
CF360-TSP	60	20.40kg

Instruction manuals :

- ◆Apply to: Connection to straight section or large flex tube drop for cable drop-out
- ◆Include: Trumpet x 1, M5 Screw and Nut x 4
- ◆Feature: Bend radius protects cables against damage when dropping out
- ◆Suit for: CF360 Fiber Cable Tray



CF600 FIBER CABLE TRAY

CF600 FIBER CABLE TRAY

Default unit : mm

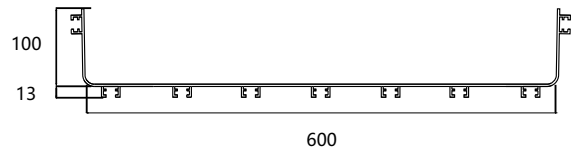
Part Number	Height	Width	Length	Weight
CF600	100	600	2000	7.42kg

P/N Definition :

◆CF600: CF means fiber cable tray; 600 means the width 600mm; the height is 100mm; HxW refers to inner size; the length is 2000mm per piece.

Instruction manuals :

◆Color: Yellow



Fiber Loading Capacity

2MM Fiber	3MM Fiber	Sectional View
4600	2100	<p>Sectional view of the tray showing 50% fiber loading. The fiber bundle is represented by a yellow dotted pattern filling 50% of the tray's height.</p>
7000	3000	<p>Sectional view of the tray showing 75% fiber loading. The fiber bundle is represented by a yellow dotted pattern filling 75% of the tray's height.</p>
10000	4200	<p>Sectional view of the tray showing 100% fiber loading. The fiber bundle is represented by a yellow dotted pattern filling the entire height of the tray.</p>

CF600 FIBER CABLE TRAY

CONNECTOR

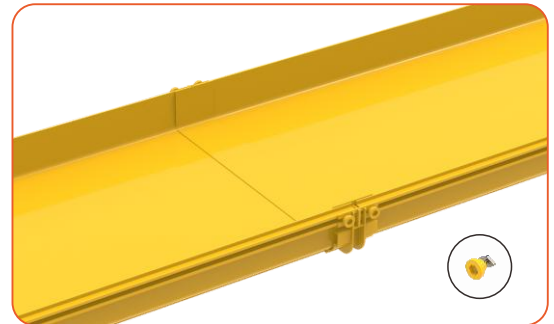
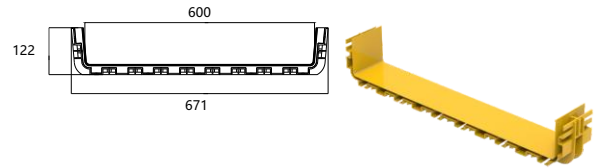
Default unit : mm

Part Number

CF600-CNT

Instruction manuals :

- ◆Apply to: Connect straight sections,etc.
- ◆Include: CF600 Connector×1, M5 Screw and Nut x 14
- ◆Suit for: CF600 Fiber Cable Tray



90° HORIZONTAL ELBOW

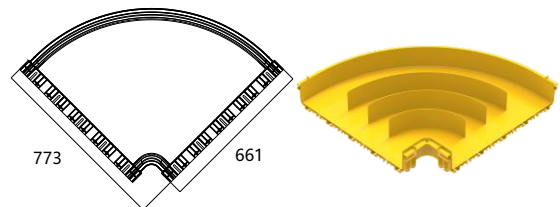
Default unit : mm

Part Number

CF600-ELB90

Instruction manuals :

- ◆Apply to: 90° Corner Connection
- ◆Include: CF600 90° Horizontal Elbow x 1, M5 Screw and Nut x 14
- ◆Feature: Equipped with Built-in Connectors
- ◆Suit for: CF600 Fiber Cable Tray



CF600 FIBER CABLE TRAY

HORIZONTAL TEE

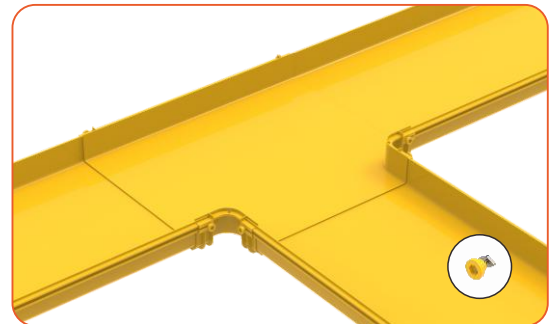
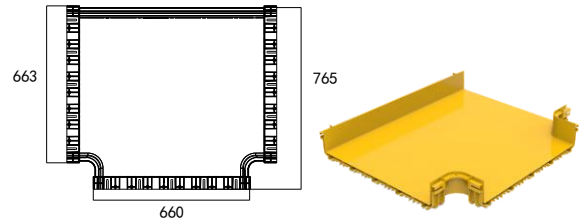
Default unit : mm

Part Number

CF600-TEE

Instruction manuals :

- ◆Apply to: Connect Horizontal Tee
- ◆Include: CF600 Horizontal Tee×1, M5 Screw and Nut x 21
- ◆Feature: Equipped with Built-in Connectors
- ◆Suit for: CF600 Fiber Cable Tray



CF600 TO CF300 HORIZONTAL TEE

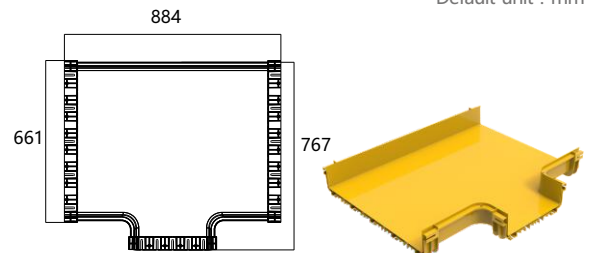
Default unit : mm

Part Number

CF600-HTC300

Instruction manuals :

- ◆Apply to: Horizontal Tee Connections for CF600 to CF300 Fiber Cable Tray
- ◆Include: CF600 to CF300 Horizontal Tee×1, M5 Screw and Nut x 15
- ◆Suit for: CF600 to CF300 Fiber Cable Tray



CF360 FIBER CABLE TRAY

CF600 TO CF360 HORIZONTAL TEE

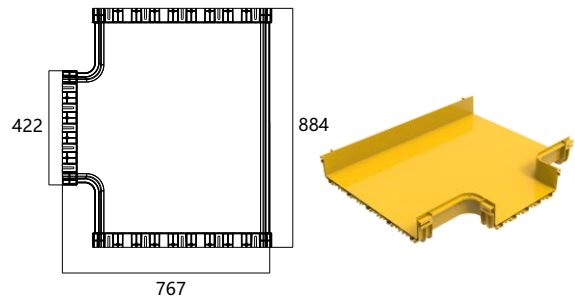
Default unit : mm

Part Number

CF600-HTC360

Instruction manuals :

- ◆Apply to: Horizontal Tee Connections for CF600 to CF360 Fiber Cable Tray
- ◆Include: CF600 to CF360 Horizontal Tee×1, M5 Screw and Nut x 15
- ◆Suit for: CF600 to CF360 Fiber Cable Tray



END CAP

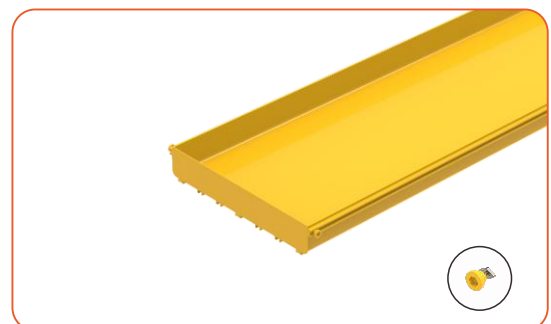
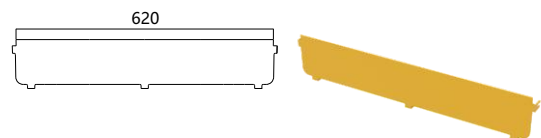
Default unit : mm

Part Number

CF600-TTR

Instruction manuals :

- ◆Apply to: Close the ends
- ◆Include: CF600 End Cap×1, M5 Screw and Nut x 5
- ◆Feature: Closed design with clean and simple style
- ◆Suit for: CF600 Fiber Cable Tray



FIBER CABLE TRAY ACCESSORIES

SMALL FLEX TUBE DROP

Default unit : mm

Part Number
OUTX56

Instruction manuals:

- ◆Apply to: Directing fibers out of fiber cable tray and into cabinet
- ◆Include: ①1 PC small flex tube drop cover
 - ②1 PC flex tube base
 - ③1 PC tube-fixer
 - ④2 sets screws and nuts
 - ⑤1 PC 1000mm long flex tube
- ◆Features: Assemble installation which is simple and convenient
- ◆Suit for: All specifications of fiber cable tray



FLEX TUBE DROP

Default unit : mm

Part Number
OUT56

Instruction manuals:

- ◆Apply to: Directing fibers out of fiber cable tray and into cabinet
- ◆Include: ①1 PC flex tube drop cover
 - ②1 PC flex tube base
 - ③1 PC tube-fixer
 - ④2 sets screws and nuts
 - ⑤1 PC 1000mm long flex tube
- ◆Features: Assemble installation which is simple and convenient
- ◆Suit for: All specifications of fiber cable tray



LARGE FLEX DROP

Default unit : mm

Part Number
CF-OUT120

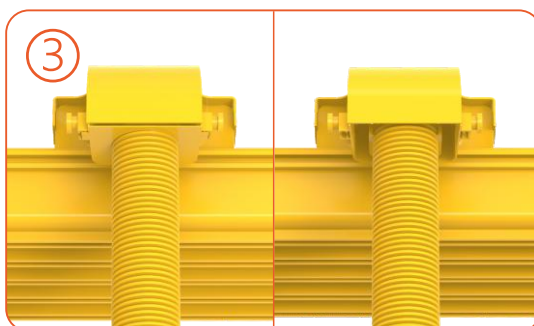
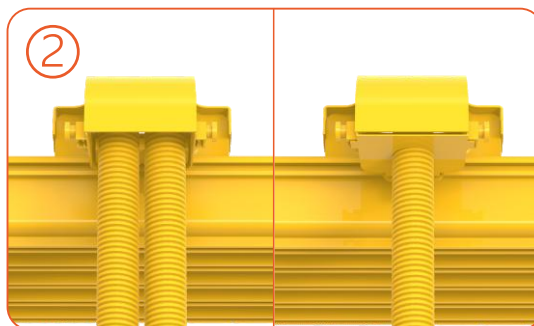
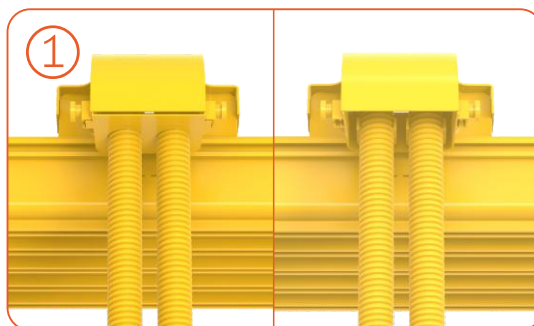
Instruction manuals:

- ◆Apply to: Directing more fibers out of fiber cable tray and into cabinet
- ◆Include: ①1 PC flex tube drop cover
- ②1 PC flex tube base
- ③2 sets screws and nuts



Options for installation

- ◆① Connecting with the tube bracket, two $\Phi 42$ mm tubes can be placed or connecting with the $\Phi 42$ mm embedded hole of the end cap (without tube bracket), two $\Phi 42$ mm tube can be placed.
- ◆② Connecting with the tube bracket, two $\Phi 56$ mm tubes can be placed or connecting with the $\Phi 56$ mm embedded hole of the end cap (without tube bracket), one $\Phi 56$ mm tube can be placed.
- ◆③ Connecting with the tube bracket or $\Phi 80$ mm embedded hole of the end cap (without tube bracket), one $\Phi 80$ mm tube can be placed.



FIBER CABLE TRAY ACCESSORIES

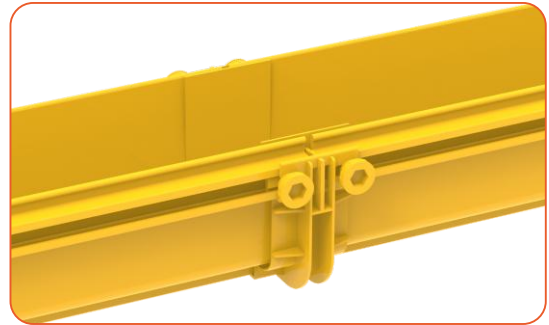
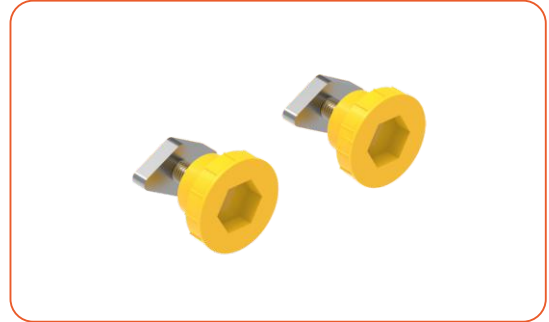
M5 SCREW AND NUT

Default unit : mm

Part Number
CF-ZYNUT

Instruction manuals:

- ◆Suit for: Fix connecting part



TUBE

Default unit : mm

Part Number
CF-PIPE42
CF-PIPE56
CF-PIPE80

Instruction manuals:

- ◆Apply to: Drops fiber optical cables
- ◆Include: Φ 42/56/80mm tube (1m) x 1
- ◆Features: Fire-retardant and PP material; Cosed treatment; Stylish design with clean and simple style



FIBER CABLE TRAY ACCESSORIES

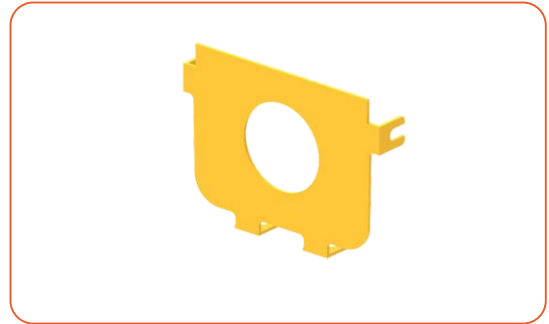
CF120 END CAP WITH EMBEDDED HOLE

Default unit : mm

Part Number
CFDZ120-TTR-CUT80
CFDZ120-TTR-CUT42
CFDZ120-TTR-CUT56

Instruction manuals:

- ◆Features: CF120 end cap with embedded hole (56mmx1/42mmx2) is used for the large flex drop to connect the tube



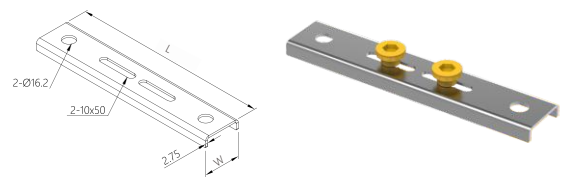
HANGING BAR

Default unit : mm

Part Number
CF-BAR120
CF-BAR240
CF-BAR300
CF-BAR360

Instruction manuals:

- ◆Apply to : Hanging the Fiber Optic Cable Tray
- ◆Include : ① 1 PC Bar
② 2 Sets M5 Screws and Nuts
- ◆Suit for : CF120/240/300/360 Fiber Optic Cable Tray

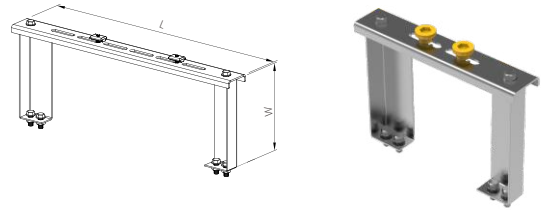


FIBER CABLE TRAY ACCESSORIES

CABINET TOP STAND

Default unit : mm

Part Number
CF120-EFS
CF240-EFS
CF300-EFS
CF360-EFS



Instruction manuals:

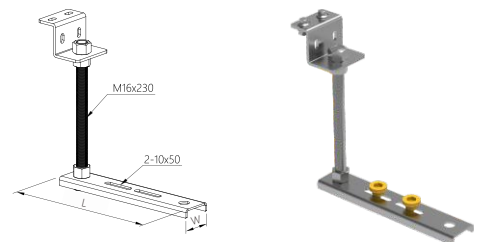
- ◆Apply to : Installing the Fiber Optic Cable Tray on the Top of the Cabinet
- ◆Include : ①1 PC Bar
②2 Supporting Leg Kits
③2 Sets Screws and Nuts
④6 PC M10*20 Bolts
⑤6 PC M10 Nuts
- ◆Suit for : CF120/240/300/360 Fiber Optic Cable Tray



HANGING SET

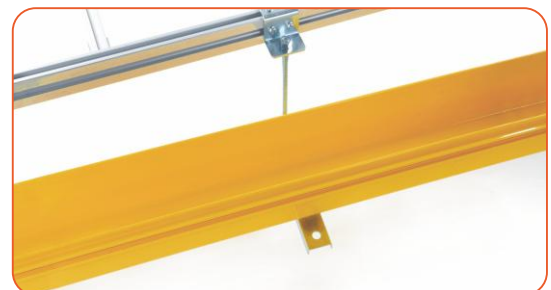
Default unit : mm

Part Number
CF120-HGS
CF240-HGS
CF300-HGS
CF360-HGS



Instruction manuals:

- ◆Apply to : Used to Hang Fiber Optic Cable Tray with Aluminum Cable Ladder or U Channel Cable Ladder
- ◆Include: ① 1 PC 120/240/300/360 Bar
② 1 PC Z Hook
③ 1 PC M16 Rod
④ 2 Sets Screws and Nuts
⑤ 4 PC M6*16 Bolts
⑥ 4 PC M6 Dimond Nuts
⑦ 4 PC M16 Nuts
- ◆Suit for : CF120/240/300/360 Fiber Optic Cable Tray

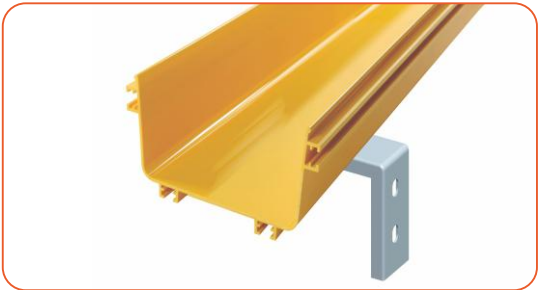
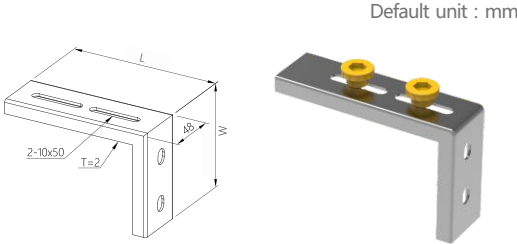


L-TYPE SUPPORT

Part Number
CF-L120
CF-L240
CF-L300
CF-L360

Instruction manuals:

- ◆Apply to : Supporting Fiber Optic Cable Tray
- ◆Include : ① 1 PC 120/240/300/360 L-Type Bar
 ② 2 Sets M5 Screws and Nuts
- ◆Suit for : CF120/240/300/360 Fiber Optic Cable Tray





**E-Book
CATALOG**

contact us

