

FIND YOURSELF AT ISKL



THE INTERNATIONAL SCHOOL OF KUALA LUMPUR



Vision

Know yourself, care for all,
and create a better world.

Mission

We are an inclusive and dynamic community where passions,
values, and competencies are cultivated to inspire learners
to shape their path as global citizens.

Values

Empathy & Care • Collective Efficacy
Equity & Inclusion • High Expectations



Selamat Datang - Welcome to ISKL

At ISKL, education is not done to our students but with them. Our Vision and Mission embody our belief in the importance of preparing students for more than success in their beyond-school options of university, college, service, or internship. Equally as important, they reflect our belief that success also encompasses social and emotional well-being, meaningful relationships with others, enjoying happy and fulfilled careers and lives, and positively impacting the world.

Every child learns differently and the range of ISKL's high-quality academic pathways and co-curricular programs has been intentionally developed to support the differing abilities, interests, and aspirations of all our learners. Whether academic, sporting, performance, arts, service, or sustainability - ISKL provides students with opportunities to explore their passions and develop their competencies in a safe and nurturing environment.

Every day I am impressed and inspired by the agency, abilities, and accomplishments of our students. It is a privilege to support their learning journey as they shape their path as global citizens and we very much welcome the opportunity to support your children in shaping their future.

In partnership,



Rami Madani
Head of School



ISKL'S School-Wide Learning Results (SLRs)

ISKL's School-Wide Learning Results (SLRs) are based on six learning outcomes that last a lifetime and enable our students to tackle the future with confidence – Think Creatively • Reason Critically • Collaborate Constructively • Communicate Effectively • Live Ethically • Learn Enthusiastically.

Our SLRs are embedded within our curriculum and culture, and are a crucial component in ensuring our students are future-ready. From Elementary through High School, developing and practicing these important skills is integral to an ISKL education.



Think Creatively

Pensar creativamente
創造的に考えること。

思维创新
Penser de manière créative
창의적인 사고
Berfikir secara kreatif



Collaborate Constructively

合作融洽
활발한 상호협력
Kerjasama secara konstruktif
Collaborer de manière constructive
前向きな姿勢で協力し合うこと。
Colaborar constructivamente



Reason Critically

思辯有度
Mengkaji secara mendalam
합리적인 비판
Avoir l'esprit critique
批判的に理屈を述べること。
Razonar críticamente



Learn Enthusiastically

Apprendre avec enthousiasme
好学进取
熱心に学習すること。
Aprender con entusiasmo
열정적인 배움
Belajar dengan tekun



Communicate Effectively

Komunikasi dengan berkesan
沟通顺畅
효과적인 의사소통
Comunicar de manera efectiva
効果的にコミュニケーションをすること。
Communiquer efficacement

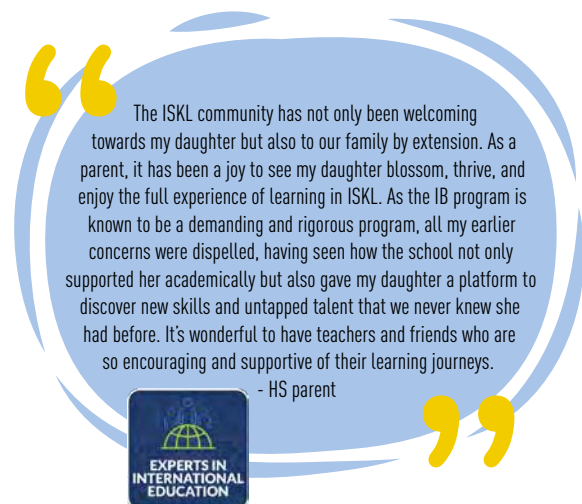
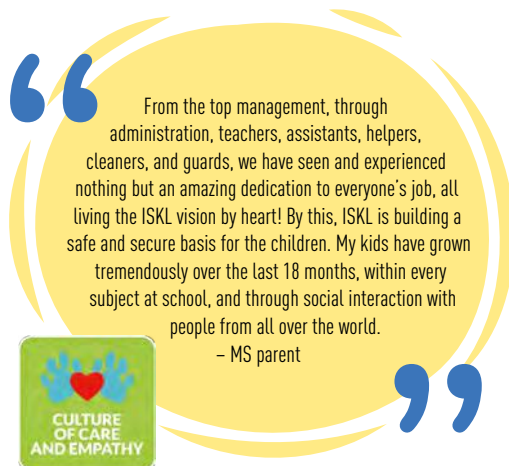
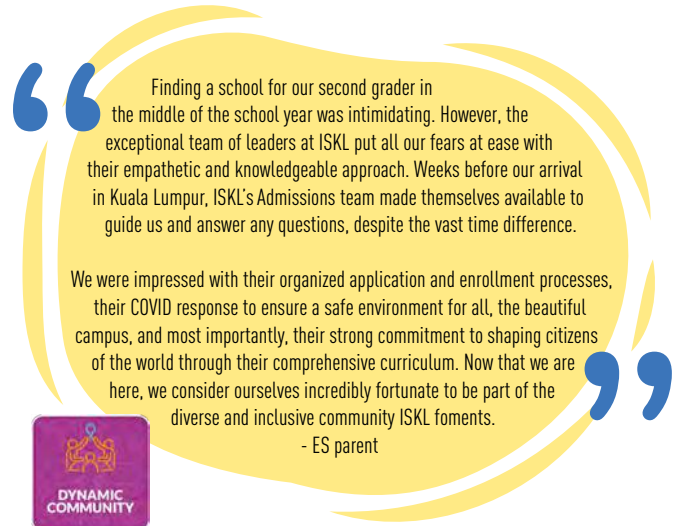


Live Ethically

윤리적인 생활
Vivir éticamente
Hidup secara beretika
倫理的に生きること。
Vivre équitablement
伦理生活

Hear from our Panthers

When your family joins our dynamic and inclusive community you automatically become **ISKL Panthers**. Whether starting school for the first time or transitioning from another school, our school-wide support framework and culture of care and empathy ensure both students and families feel at home right from the start. Here's what some of our Panther parents past and present shared with us about their ISKL experience.



Read the Real-Life Stories of our Panthers

The Panthers of ISKL is our platform for sharing the real-life stories of our students, parents, alumni, teachers, and staff. Their stories reflect the richness and diversity of our inclusive and inspirational culture.



Scan the QR code to read more about the Panthers of ISKL.

The Story of ISKL's Batik Print



The batik print featured in this prospectus was designed by students in the Class of 2019's IB Diploma Visual Arts. The print was specially commissioned for ISKL's graduation sash and is now used as a school-wide motif to symbolize the diversity of our school, pay tribute to our history, and honor the heritage of our host country.

'ISKL' features prominently, and 'MY' is embedded in an open book to represent the learning journey taken in our host country. Reinforcing our cultural link, the design incorporates the hibiscus and an Islamic motif. Visual elements include koi fish to symbolize good luck and the myriad of lines reflect the diversity of our community.

Future-Ready Students

The skills and learning habits that students develop throughout their formative years at school are vitally important because they quite literally last a lifetime. At ISKL, we believe in the importance of the role our school plays in preparing our students for their future and leading happy and successful lives.

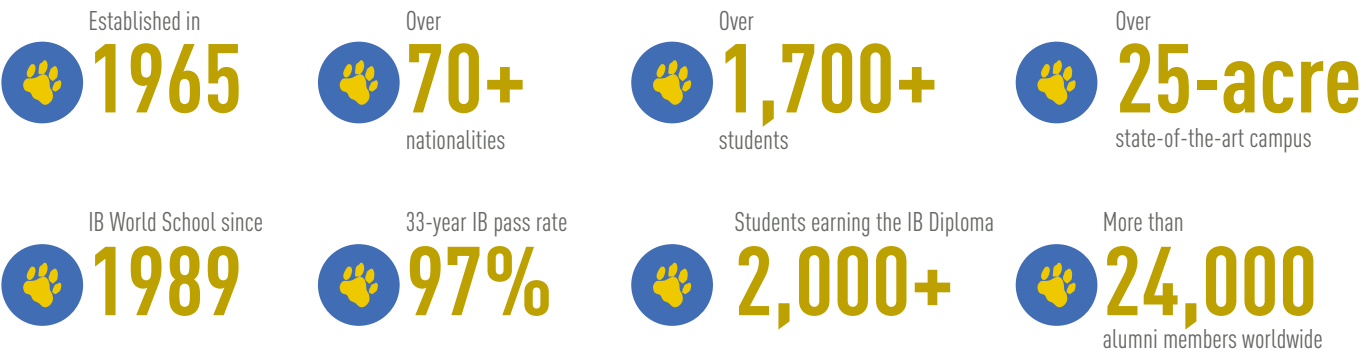
Helping students maximize their potential and academic growth is only part of the future-readiness story here at ISKL. Equally important, is our role in helping students develop the skills and mindsets needed to understand themselves, learn how to take care of their own social and emotional well-being, care for others, and contribute positively to the world.

Underpinned by our Vision, Mission, Values, and School-wide Learning Results, our approach is based on global research and best practices. Academic and co-curricular programs are designed to incorporate teaching and learning opportunities that enable students to develop the skills needed to navigate an increasingly agile and diverse world where resilience and the ability to learn, unlearn, and relearn are critical.

This includes developing social and emotional competencies that have the power to create positive outcomes in all aspects of a student's life as well as being a major contributor to academic achievement. Social and Emotional Learning is embedded within ISKL's curriculum and we actively support our students in developing and strengthening these competencies both in and out of the classroom. We want our students to be emotionally competent and equipped with the skills and understanding they need to successfully navigate their future and lead positive, fulfilling lives.

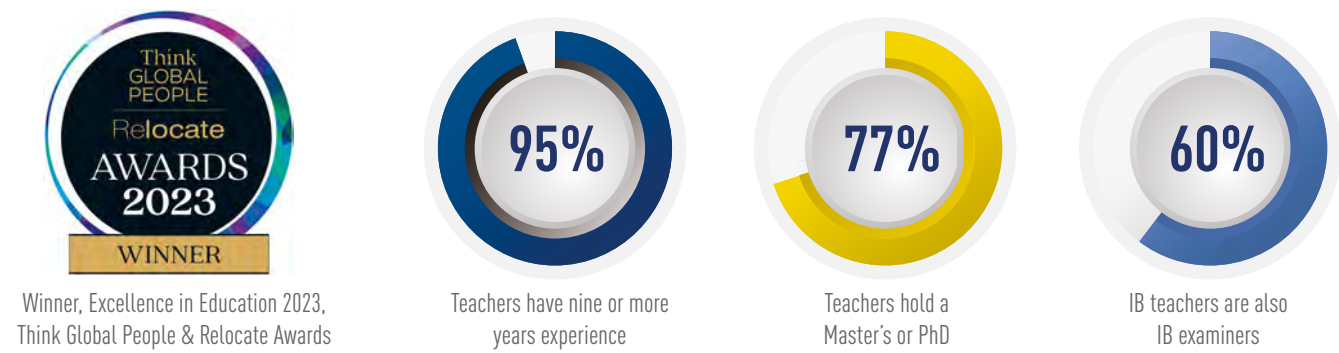


ISKL at a Glance



INTERNATIONAL CURRICULUM • INTERNATIONAL EDUCATORS

ISKL offers a robust international curriculum that combines leading North American educational frameworks with global best practices. Taught by international specialist educators, our curriculum is inquiry-based, student-centered, and designed to foster self-directed learners. Student progress is closely monitored and assessed using international standards-based assessment frameworks that focus on key competencies. The unique flexibility of our High School curriculum enables students to select from the IB Diploma Programme or ISKL's innovative Pursuits Program and take advantage of global opportunities.



Why choose an ISKL education?

Here are just some of the reasons the families of over 1,700 students have chosen ISKL for their child's education.

SLR_s

**FUTURE-READY
EDUCATION**



**A WORLD OF
OPPORTUNITIES**



INCLUSION



YOUR ISKL



**DYNAMIC
COMMUNITY**



**NON-PROFIT
SCHOOL**



**STATE-OF-THE-
ART CAMPUS**



FUTURE-READY EDUCATION

ISKL's rigorous international curriculum combines academic excellence with holistic development, preparing students for global success through comprehensive internal and external assessments.



A WORLD OF OPPORTUNITIES

ISKL's co-curricular programs in academics, arts, athletics, and community service empower students to pursue their passions, fostering global awareness and citizenship in a culturally diverse environment.



INCLUSION

Our holistic support system fosters academic and social-emotional growth through a collaborative, evidence-based approach, ensuring our students are equipped to fulfill their potential.



DYNAMIC COMMUNITY

Joining ISKL means becoming part of a vibrant community celebrating diversity and nurturing international mindedness, with over 70 nationalities enriching our shared experiences and perspectives.



NON-PROFIT SCHOOL

ISKL is a non-profit school whose revenue from tuition is reinvested to recruit and retain the best international educators and enhance the school environment, ensuring the best possible learning experience for our students.



STATE-OF-THE-ART CAMPUS

In the heart of Kuala Lumpur, ISKL's 25-acre campus is a hub of advanced learning. State-of-the-art technology and innovations provide a world-class learning environment where students can discover their passions and shape their path as global citizens.



“

Skills are developed and practiced in and out of the classroom with students learning to translate their ideas and findings into action. We want our students to not only know that they can make a difference, but also to learn *how* to make a difference.



SERVICE LEARNING AND SUSTAINABILITY

Our curriculum is complemented by a values-based educational philosophy which incorporates service learning and sustainability. This ensures that in addition to academic outcomes, students have a strong understanding of the importance and impact of taking positive action to affect change at both a local and global level.

We believe learning through service instills strong values that will last a lifetime. Service learning and environmental education are integrated into our curriculum so that each student develops an understanding of the importance of active community involvement, and learns the skills needed to take action and make positive changes in the world around them.

COUNSELING PROGRAM

The years of Early Childhood through High School are all critical periods for developing positive attitudes, skills and knowledge around health and well-being. Our specialist counselors are important stewards of our students' emotional health and well-being and are a critical component in providing a holistic education at ISKL. They support students in navigating the academic, emotional, and social challenges associated with each stage of their development.

In addition to classroom lessons and grade level advisory programs our school-wide counseling program also includes topical workshops for students and parents, one-to-one and small group counseling, transition support and university admission, careers and beyond-school guidance.





INCLUSION AT ISKL

Inclusion is at the very heart and soul of our identity at ISKL. It is part of our DNA, our culture and our community. This means that we embrace diversity in nationality, language, gender, faith, learning differences and all the other wonderful characteristics that make us individuals. Our caring and inclusive culture provides programming which allows equal access and opportunity for students to succeed and find their passion.

Our Student Services multi-disciplinary team of specialists includes English as an Additional Language (EAL), Learning Resource (LR) and counseling professionals who work alongside classroom teachers to provide an individualized approach. This in turn, fosters growth in all levels of academic as well as social-emotional learning. Each element goes hand in hand to support long-term developmental goals.



Finalist
Talk Education Awards 2023
Innovation in Education Diversity, Equity, and Inclusion
for our VOX ISKL discussion series

Our Student Services team includes:

- Counselors
- Teachers
- Specialist Educators
- Educational Psychologists
- Speech Language Pathologist (Elementary School only)

Our award-winning Life-Centered Education (LCE) support service is one facet of the continuum of support services we offer. LCE is a personalized learning service designed to meet the needs of students with more significant intellectual, learning, or developmental differences who require individualized academic and social skill instruction. Customized instruction and support is provided by highly trained special educators and assistant teachers who focus on teaching literacy, mathematics, social skills, and life skills to students. Additionally, students are integrated into our school elective classes and optional after school activities.

THE INTERNATIONAL SCHOOL
AWARDS
"Best Initiative to Support Inclusion"



Co-Curricular Activities

Participation in a wide variety of co-curricular and student-selected activities is a vital part of our educational philosophy. From Early Childhood through High School, all students are actively encouraged to participate in these invaluable learning experiences. In addition to discovering new passions and interests, participating in co-curricular activities helps students develop important life skills and build friendships.

Opportunities include sports, performance, art, music, Model United Nations (MUN), debate, and clubs covering every topic from animal rescue to robotics. Regional travel for sporting events and cultural conventions is incorporated into the curriculum and parents have the opportunity to watch their children demonstrate their learning in live performances and tournaments.



Beyond the Classroom

By combining service learning with outdoor adventure, we enable our students to gain different perspectives, build their global understanding, and develop new skills. Our students all report feeling a greater sense of resilience, confidence and compassion as a result.

As passionate advocates for the benefits of outdoor experiential learning, the Global Action Program (GAP) undertaken by students in Grade 9 to 11 is the culmination of a school-wide program designed to foster these experiences and build these skills over time. Our students begin with

overnight trips in Grade 4 and 5, then on to one of the highlights of Middle School - Malaysia Week, before taking on the exciting challenge of GAP in High School.

The deep social connections, benefits of no technology, and engagement with local communities and nature encapsulate why GAP, Malaysia Week and Elementary School experiences are such an important part of learning at ISKL. By taking students out of the classroom and into the unknown they learn to be comfortable with being out of their comfort zone - a truly invaluable life skill.

Elementary School

At ISKL, our early learners are guided by 'The Melawati Way', a code of behavior that encourages students to *'Take care of yourself, Take care of others, and Take care of this place'*. The Melawati Way is named after our previous Elementary School campus and has helped shape the attitudes and behavior of thousands of students since it was first introduced in 1997.

EARLY CHILDHOOD PROGRAM

For our youngest students, learning is about inspiring curiosity and learning through play. ISKL's Early Childhood Program (Prep Reception, Prep Junior, and Prep Senior) is based on the development of the whole child with social, emotional, cognitive, physical, and creative skills cultivated through learning experiences and activities within structured and creative learning environments. Our world language program commences in Prep Senior.

GRADE 1- 5

The Elementary School program builds on the skills and learning outcomes of the Early Childhood Program through a standards-based curriculum that specifies what students should know and be able to do. Articulated levels of performance are determined for each grade level and guide instruction and learning outcomes.

Students develop a strong foundation in language arts, mathematics, social studies, world language and science.



This is complemented by instruction in visual arts, music, and physical education, information literacy, and health. Service learning and environmental education are also integrated throughout the curriculum.

SERVICE LEARNING AND SUSTAINABILITY

In Grade 5, students become social change-makers and choose a cause to contribute to, and advocate for, throughout the school year. Students also train to become "Red Hats" and are looked up to as role models by the rest of the Elementary School students.

ELEMENTARY SCHOOL COUNSELING PROGRAM

- Individual monitoring of each phase of the student's transition through Elementary School.
- Individual and small group counseling.
- Classroom lessons and programs promote student well-being and a positive, caring community.



FAST FACTS

- Students benefit from small class sizes and a friendly, caring environment.
- ISKL is one of the only international schools in Kuala Lumpur with a dedicated, in-house, full-time speech and language pathologist in the Elementary School who provides speech and language services for individual students or small groups based on their needs.
- Our World Language program includes Bahasa Melayu, Chinese, and Spanish.
- A wide range of technology tools are used to enhance learning.
- Learning spaces include multi-sensory Makerspaces, a child-friendly kitchen, woodworking, gardens and art studios.
- Outdoor learning spaces to support gross motor skills development include a climbing wall and playgrounds.
- A team of educational specialists provide extra support for language, literacy, social, and emotional development.

AGES, CLASS SIZE AND SCHOOL HOURS

Prep Reception (PR)

3 years old by September 1

Class size up to 18 students

Prep Junior (PJ)

4 years old by September 1

Class size up to 18 students

PR & PJ School Hours

8:00 am - 12:30 pm

Prep Senior (PS)

5 years old by September 1

Class size up to 20 students

PS School Hours

8:00 am - 2:45 pm

Grade 1

6 years old by September 1

Class size up to 20 students

Grade 2

Class size up to 20 students

Grade 3 - 5

Class size up to 22 students

Grade 1 - 5 School Hours

8:00 am - 2:45 pm

After School Activities

2:45 pm - 3:45 pm

The Melawati Way

PANTHERS CARE

Take Care of Yourself



Take Care of Others



Take Care of This Place



Scan the QR code for the Elementary School Program.

Middle School

ISKL's Middle School provides a critical bridge between the Elementary years and High School. Our program offers the academic, physical, and social challenges needed for students to grow and explore their passions and interests, and offers authentic, real-world challenges both inside and outside the classroom.



GRADE 6 - 8

Our Middle School program has been specifically designed to encourage students to become independent learners, find balance, and develop the academic and interpersonal skills needed to reach their full potential as adolescent learners. Students are supported by expert educators who understand this important life stage.

All students in Middle School are required to take a core curriculum comprising mathematics, science, humanities, physical education and a world language. These are supported by required core courses, and optional electives which provide students with the opportunity to explore a range of subjects.

Each day begins with a multi-grade homegroup where one teacher meets with 8 - 10 students which builds relationships and makes long-lasting connections. The friendships formed here, combined with lessons and activities, help students manage the social and emotional changes of adolescence.

Complementing the academic program are a huge variety of co-curricular activities including sports, service learning, special interest clubs, and the arts which allow students to develop new skills, passions and interests.

In addition to building our students' skills and knowledge base in preparation for High School, our program also helps inform their decisions about curriculum and subject choices as they transition into Grade 9.



Scan the QR code for the Middle School Program.



FAST FACTS

- Middle School's Student Agency program builds the critical thinking and problem-solving skills students need to be future-ready.
- Chinese, French or Spanish is available at beginner, intermediate, and advanced levels.
- Bahasa Melayu and Chinese (Mother Tongue) are also available.
- A daily multi-grade homegroup program promotes friendship and connection between students of different grades and age levels.
- Students are supported by an educational psychologist and counseling team covering all aspects of their academic, social and emotional development.
- All students attend Malaysia Week, an offsite outdoor interdisciplinary learning program.
- Daily 30 minute supervised What I Need (WIN) Time gives students agency over their learning.

SERVICE LEARNING AND SUSTAINABILITY

Malaysia Week is a long-standing tradition where students engage in outdoor interdisciplinary education experiences in the reefs and rainforests of Malaysia. Service learning opportunities are an integral component of the week and involve students in practical activities focused on helping communities and the environment.



Malaysia Week was shortlisted in Talk Education Awards 2022 for Innovation in Education in the category Inspiring Co-curricular Activities.

MIDDLE SCHOOL COUNSELING PROGRAM

- Daily multi-grade homegroup meetings promote connection and learning.
- Social, emotional, and academic counseling.
- Individual and small group counseling sessions.
- Workshop and counseling program covers key topics such as coping with adolescence, health, and well-being.



High School Grade 9 - 10

The hallmarks of ISKL's High School program are quality, choice and flexibility. ISKL is unique in offering such a wide range of high-quality academic pathways that have been designed to enable every learner to choose the curriculum best suited to their abilities, interests, and aspirations. Learning focuses on developing future-ready skills as well as offering exposure to a variety of perspectives.



GRADE 9 - 10

All Grade 9 and 10 students follow ISKL's graduation requirements as outlined in the course guide. As students select their program of study, there is ample opportunity to choose different courses in the multiple department areas to meet individual interests and talents. This wide range of choices enables students to explore different subjects in preparation for future programs and Grade 11 and 12 course choices.

As they enter Grade 9, students can elect to learn in either a conventional classroom setting where each subject is taught on a stand-alone basis or to enroll in PRAXIS, an innovative interdisciplinary one-year program that reimagines the classroom experience.

Featuring a smaller learning community and flexible timetable, PRAXIS focuses on problem-based learning and situates the current science, English, social studies and art/design curriculum around a series of complex, compelling problems that demand an interdisciplinary approach.

Mathematics, world language, physical education, and elective courses continue to be taught in the regular classroom setting.

Whichever option students select in Grade 9, all students will follow the same program in Grade 10 and are well-positioned to make the best-fit choice for their academic pathway in Grade 11 and 12.



GLOBAL ONLINE ACADEMY

ISKL is proud to celebrate its partnership with the Global Online Academy (GOA). GOA is a non-profit consortium of leading independent schools from around the world and offers ISKL students the opportunity to learn alongside peers from around the world. GOA courses further enrich the ISKL experience by helping students test their passions in ways typically unavailable on a single campus.



SERVICE LEARNING AND SUSTAINABILITY

Our Global Action Program (GAP) in Grade 9 to 11 is designed to build students' awareness of emerging global issues by involving them in a range of cultural, environmental, and service opportunities. Projects are as diverse as community builds in Nepal to wildlife conservation in Bali.

HIGH SCHOOL COUNSELING PROGRAM

- Grade-level seminars and advisory programs focus on student health and well-being.
- Individual and small group counseling sessions.
- Guidance on curriculum choice and subject selection.
- Support with beyond-school choices whether university, service, gap year or workplace.
- Individual support and guidance in choosing the best fit university, application and admission.



Scan the QR code
for the High School
Program.

FAST FACTS

- The unique flexibility of the High School curriculum enables students to explore options and take advantage of global opportunities.
- All students who meet ISKL's graduation requirements receive an ISKL High School Diploma which is equivalent to a U.S. High School Diploma, this includes students who complete the International Baccalaureate Diploma and Pursuits Program.
- Specialist counselors provide support for curriculum and subject choice, university application, and beyond-school options.
- All Grade 9-11 students participate in Global Action Program (GAP) expeditions which combine service learning with outdoor activities at locations across Asia.



Scan the QR code
for more information
about PRAXIS at ISKL.

High School Grade 11 - 12

Students in Grade 11 and 12 have the choice of two pathways; the International Baccalaureate Diploma Programme (IBDP), or Pursuits Program. Each of these two-year pathways provides a comprehensive, relevant and challenging course of study that can be tailored to individual interests, strengths and goals. Access to these two distinct pathways creates flexibility for every learner to pursue any number of post-secondary opportunities worldwide.



INTERNATIONAL BACCALAUREATE DIPLOMA PROGRAMME

The IB Diploma provides a challenging two-year pre-university curriculum that leads to a qualification recognized by the world's leading universities.

To earn the IB Diploma, students are required to study six subjects (three at Higher Level and three at Standard Level) and complete the Diploma Programme (DP) Core which broadens the students' educational experience and provides opportunities for them to apply their knowledge and develop their skills. The DP Core comprises three required components:

- Theory of knowledge, in which students reflect on the nature of knowledge.
- The extended essay, an independent, self-directed piece of research, finishing with a 4,000-word paper.
- Creativity, activity, service, in which students complete a project related to those three concepts.

IB FAST FACTS:

- Authorized to run the IBDP in 1989, ISKL is the longest running IB World School in Malaysia with a wealth of experience to share with students.
- We offer the IBDP on a non-selective basis and support every student to maximize their potential.
- Over 60% of ISKL IB teachers also have a role with the IBO as examiners or advisers.
- Our results consistently outperform regional and worldwide averages.
- ISKL's language program is designed to support students taking a bilingual IBDP. IB Language and Literature courses are available in Chinese, English, Korean, and Spanish.



Scan the QR code
for more information
about the IB Diploma
Programme at ISKL.



Congratulations GRADUATING CLASS



PURSUIITS PROGRAM

ISKL's innovative Pursuits Program is a two-year course for Grade 11 and 12 students who want to gain recognition for a targeted area of study, as well as for students who would like to sample a career-related field of study.

Pursuits offers students the opportunity to combine individual IB, Advanced Placement and High School Diploma courses to create their own program of study and take a deep-dive into a chosen area of focus such as Global Issues or Engineering and Design. Students also have the opportunity to apply their learning in an authentic environment outside the classroom setting.

PURSUIITS PROGRAM FAST FACTS:

- Pursuits is an innovative program which fosters the skills of self-directed learning and independence.
- Students undertake at least two semester-long courses of independent study related to their chosen area of focus.
- The Applied Learning experience enables students to apply their knowledge and skills in a learning opportunity outside the classroom such as an off campus internship, dedicated weekly service, or a work placement assignment with one of our departments on campus.

ISKL PURSUIITS PROGRAM



Students are encouraged to speak with ISKL's High School counseling team about the admissions criteria for universities to which they would like to apply, as this may vary between universities in different countries.



Scan the QR code for more information about the Pursuits Program at ISKL.

University Attendance

ISKL students are in demand by universities all over the world! This list represents some of the recent university destinations of our students. ISKL's academic program has been designed to provide students with the flexibility to explore options and take advantage of global opportunities. This ensures students are best placed to apply to their universities of choice, in their countries of choice.



Scan the QR
code to see
the full list

AUSTRALIA

La Trobe University
Royal Melbourne Institute
of Technology
University of Melbourne
University of New South Wales
University of Sydney

AUSTRIA

Webster Vienna Private University

CANADA

Carleton University
Concordia University
Dalhousie University
McGill University
Queen's University
University of British Columbia
University of Toronto
University of Waterloo
Vancouver Film School
Western University
York University

FRANCE

EDHEC Business School
ESSEC Business School
IESEG School of Management
The American University of Paris

CHINA HONG KONG

Duke Kunshan University
The University of Hong Kong

INDIA

O.P. Jindal Global University

IRELAND

Trinity College Dublin
Royal College of Surgeon in Ireland
University College Dublin

ITALY

Bocconi University

JAPAN

Kyoto University of Advanced Science
Rikkyo University
Sophia University
Waseda University

MALAYSIA

International Medical University
Monash University

Taylor's University
The University of Nottingham

NETHERLANDS

Amsterdam University College
Eindhoven University of Technology
Erasmus University College
Erasmus University Rotterdam
Hotelschool The Hague
Leiden University College
Nyenrode Business University
Rotterdam University
of Applied Sciences
Technical University (TU) Delft
Tilburg University
The Hague University
of Applied Sciences
University of Amsterdam
University of Groningen
University of Twente
Utrecht University
Willem de Kooning Academie

NEW ZEALAND

University of Auckland

SINGAPORE

Lasalle College of the Arts
Singapore Management University
Yale-NUS

SOUTH KOREA

Sungkyunkwan University
Yonsei University

SPAIN

IE University (Madrid, Segovia)
St. Louis University, Madrid

SWEDEN

Jönköping University
Stockholm University
University of Gothenburg

SWITZERLAND

Ecole Hoteliere de Lausanne
Les Roches International School
of Hotel Management

TAIWAN, CHINA

National Taiwan University

UNITED ARAB EMIRATES

Middlesex University, Dubai

UNITED KINGDOM

BIMM Institute London
City University of London
Durham University
Imperial College London
King's College London
Lancaster University
London College of Fashion
London School of Economics
and Political Science
Loughborough University
Queen Mary University of London
Queen's University Belfast
Royal Holloway, University of London
Royal Veterinary College,
University of London
The University of Nottingham
University College London
University of Bath
University of Birmingham
University of Bristol
University of Buckingham
University of Cambridge
University of Edinburgh
University of Exeter
University of Glasgow
University of Hertfordshire
University of Leeds
University of Leicester
University of Manchester
University of Oxford
University of Sheffield
University of St. Andrews
University of the Arts London
University of Warwick
University of Westminster
University of York

UNITED STATES OF AMERICA

Arizona State University
Barnard College
Bentley University
Berklee College of Music
Boston Conservatory
Boston University
Brigham Young University
Brown University
California Institute of Technology
California Polytechnic State University
Carnegie Mellon University
Case Western Reserve University
Chapman University
Colby College
Colgate University
Drexel University
Duke University
Elon University
Emerson College
Emory University
George Mason University
Howard University
Johns Hopkins University
Michigan State University
New York University
Northeastern University
Orange Coast College
Pennsylvania State University
- University Park
Pomona College
Pratt Institute
Purdue University
Santa Clara University
Savannah College of Art and Design
Southwestern Illinois College
Stevens Institute of Technology
Texas A&M University
The Ohio State University
University of Arizona
University of California
(Berkeley, Davis Irvine, Los Angeles,
San Diego)
University of Central Florida
University of Chicago
University of Colorado Boulder
University of Hawaii at Manoa
University of Illinois Urbana-Champaign
University of Michigan
University of New Hampshire
University of North Carolina
(Greensboro, Chapel Hill)
University of Notre Dame
University of Pennsylvania
University of Pittsburgh
University of Rochester
University of San Diego
University of San Francisco
University of South Florida
University of Southern California
University of Texas at Dallas
University of Vermont
University of Virginia
University of Washington
University of Washington Bothell
University of Wisconsin-Madison
Villanova University
Virginia Tech
Wellesley College
Yale University

"I think the teachers at ISKL are just amazing - they are really supportive"

Jaymie E. [U.K., Malaysia], Cognitive Science, York University, Canada.

"I was incredibly lucky to have some amazing teachers and mentors... so fortunate to have great teachers for every single one of my IB diploma classes!"

Sophia L. [U.K., Australia, & Singapore], Philosophy, Politics and Economics, University of Oxford, U.K.

"I miss the people at ISKL, especially my teachers. I loved every conversation I got to have with them before class, during lunch, or extra help time."

Angelique K. [Qatar], Medicine, Weill Cornell Medicine, Qatar.



"My time at ISKL has been nothing but a blast. I joined this school and was welcomed with open arms by the ISKL community. It has been a splendid adventure from the High School Play to playing IASAS sports. Thank you, ISKL!"

Joachim F.N. [France, Malaysia], Theatre, Suffolk University, U.S.

"When studying at an international school like ISKL, you can learn the language, find people that natively speak it, and practice with them. It's a great environment to start a new language!"

Oscar R. [U.S.] - International Business, Edhec Business School, France.

"It was really easy to find myself at ISKL. There were just so many opportunities the school provided you, so how could I not? "

Molly G. [Australia], Speech Pathology, La Trobe University, Australia.



Campus Designed for Learning and Innovation

PERFORMING ARTS CENTRE

- 600+ seat Robert B. Gaw Theatre
- Dr. Norma J. Hudson Amphitheatre
- 345-seat Melawati Theatre

AQUATICS CENTRE

- 50 meter Olympic-sized competition pool
- 25-meter daily activity pool
- Learn-to-swim pool

LEARNING SPACES

- Collaborative learning spaces
- Multi-sensory and Makerspaces
- Two libraries
- Technology & science laboratories
- Food technology laboratories
- Dance, visual & digital arts studios
- Early years play area & playgrounds
- Eco Garden
- Recycling & compost centers

SPORTS COMPLEX

- Regulation 400 m, eight-lane track
- Basketball, volleyball, & badminton courts
- Tennis courts
- Indoor fitness center
- Climbing wall
- Full sized rugby & soccer pitch
- Softball and football fields
- Two gymnasiums



Scan the QR code to take a virtual tour of our campus.



Scan the QR code for 360 degree views of our campus.

Accreditations, Memberships and Awards

Accreditations



ISKL is accredited internationally through the Council of International Schools (CIS) and the Western Association of Schools and Colleges (WASC)



Authorized in 1989, ISKL is the longest-running IB World School in Malaysia.

Memberships



Association for the Advancement of International Education (AAIE)



Association of Music in International Schools (AMIS)



Eco-Schools organization and the Green Schools Alliance



East Asia Regional Council of Schools (EARCOS)



Global Online Academy (GOA)



International Association for College Admission Counseling (IACAC)



International School Counselor Association (ISCA)



International Schools Theater Association (ISTA)



Interscholastic Association of Southeast Asian Schools (IASAS)



National Association for College Admission Counseling (NACAC)



Next Frontier Inclusion (NFI)



Principals' Training Center (PTC)



Safe Passage Across Networks (SPAN)



Special Education Network and Inclusion Association (SENIA)



The Association of International Malaysian Schools (AIMS)

Awards



Recipient of the International Forums of Global Practitioners (IFIP) Global Inclusion Award 2024 in the Education Social Impact category for our VOX ISKL series



Shortlisted Excellence in Environmental, Social & Governance Award Think Global People & Relocate Awards 2024



Winner Excellence in Education Award, Think Global People & Relocate Awards 2023



Shortlisted Diversity, Equity, Inclusion, and Justice category, International School Awards 2023



Shortlisted Innovation in Education Equity, Diversity and Inclusion category, Talk Education Awards 2023



Shortlisted Innovation in Education Inspiring Co-curricular Activities for our Middle School Malaysia Week program, Talk Education Awards 2022



Joint winner Best New Green & Sustainable Academia Building, MalaysiaGBC Leadership In Sustainability Awards 2022



Winner 'Wellbeing Initiative' for our community support during the pandemic, International School Awards 2021



Highly Commended 'School Providing Outstanding Relocation Support,' Relocate Awards 2020



Winner 'Initiative for Inclusion' for our Life-Centered Education Program, International School Awards 2019



Winner 'Sustainability Project Award', Global Awards 2019



First recipient of the Eco-Schools Green Flag Award in Malaysia, recognizing excellence in environmental action and learning



Green Excellence Award, Edge Malaysia-Pertubuhan Akitek Malaysia (PAM – Malaysian Institute of Architects) 2019



Gold Award for Excellence in Architecture (Education), PAM (Malaysian Institute of Architects) 2019

Welcome to our CommUNITY

Our school-wide support framework has been designed to help new students transition into school life at ISKL. Support is provided in advance of your child's start date to help make their transition as seamless as possible.

In addition to the structured transition program run by divisional counselors, new students are paired with a student in the same grade who introduces them to new friends, helps them find their way around school, and answers any questions.

Belonging to a vibrant and connected school community is important for parents too. We want our new parents to feel at home when their child joins ISKL, and we are fortunate to have the support of our friendly Parent Teacher Association (PTA) to help us achieve this.

In addition to arranging community building events, the PTA is also responsible for welcoming new families. This means when your child joins ISKL, your whole family will receive a warm welcome and plenty of opportunities to become involved in our school community.



“ISKL is a second home for many and a safe haven when transitioning with an international move. It is because of the school and the people here, that our family settled in as quickly and easily as we did”.

- MS Parent



Learn more about the vibrant community surrounding ISKL's Ampang Hilir campus.



Scan the QR code for more information about ISKL's bus service.



LIVING IN KUALA LUMPUR

Families who are moving to Kuala Lumpur have plenty of great options to choose where to live. Our campus is located 3 km from Kuala Lumpur City Centre (KLCC), and is serviced by a dedicated school bus network.

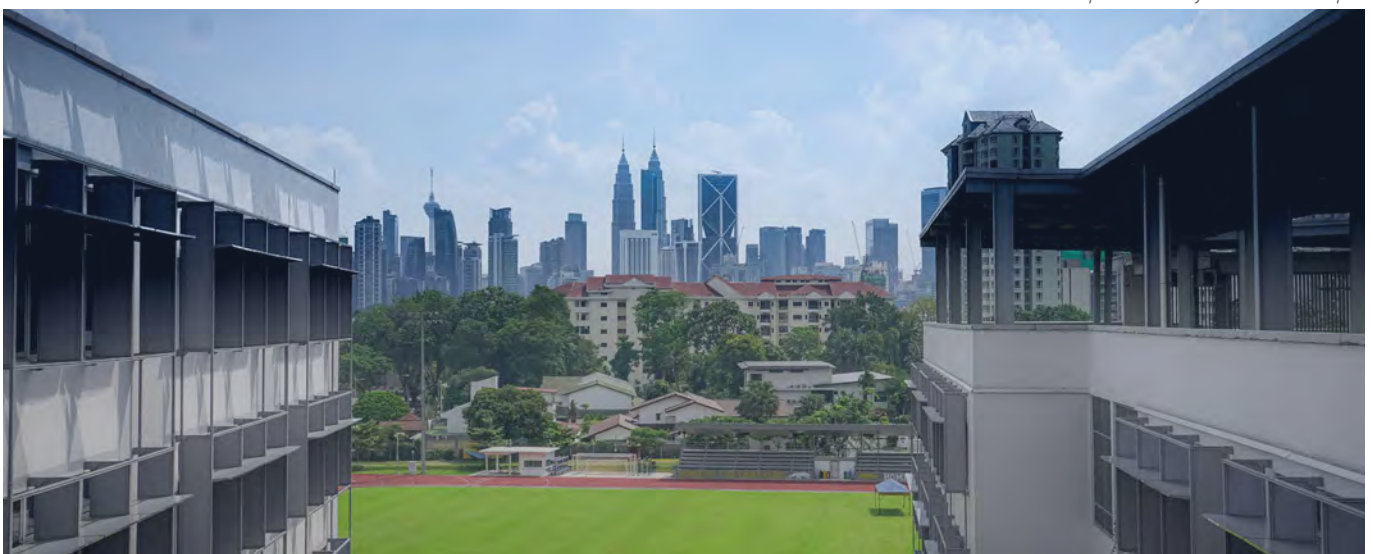
In addition to the morning and after school bus runs, ISKL's activity bus service is timed to enable students to make the most of our after school sports and co-curricular activities with additional buses leaving school at 4:00 pm (ES), 4:45 pm and 6:10 pm (MS and HS).

All buses are strictly controlled for safety and every route is monitored by ride-along bus monitors who ensure students are dropped safely at the designated location.

FAST FACTS

- ISKL families live throughout the Klang Valley which comprises Kuala Lumpur and surrounding suburbs.
- Around 55% of students travel to school by bus and of those students:
 - 33% travel from Jalan U-Thant, Jalan Ampang, and Ampang Hilir.
 - 33% travel from KLCC, Persiaran Hampshire, Persiaran KLCC and Bukit Ceylon.
 - 34% travel from Mont Kiara, Bangsar and Damansara.

View of Kuala Lumpur's iconic skyline from our campus



Joining ISKL

Selecting a school for your child/ren is an important decision which can have a long-lasting impact. So, regardless of whether your child is starting school for the first time or entering High School, we encourage you to do as much research and ask as many questions as you can. ISKL's knowledgeable Admissions team is here to help!



We love to share what makes ISKL such a great school, and welcome the opportunity to discuss your child/ren's education, answer any questions you may have, and arrange a private campus tour so you can see our school in action.

For families located overseas we offer live virtual tours led by one of our Student Admission Representatives (STARs). You can explore our campus at your own pace, ask questions, and chat with a member of Admissions - all from the comfort of your own home!

ISKL welcomes applications from all nationalities and while there is no formal deadline to apply, enrollment in all school divisions is running at, or near capacity, with limited vacancies for new students. We therefore encourage families to apply as soon as possible.



Highly Commended in the Relocate Awards 2020 in the category 'School Providing Outstanding Relocation Support'.

FAST FACTS

- High School students are welcome to enroll anytime up until April 1.
- Elementary and Middle School students may enroll anytime up until May 1.
- Screening is required for all applicants to Prep Reception, Prep Junior and Prep Senior. In some instances, students applying for Grades 1-12 may be required to complete admissions screening.
- Provided space is available, acceptance is based on a review of past academic performance, personal history, and program match.
- In addition to meeting Admissions criteria, all students must reside with at least one parent or legal guardian who has a valid work permit or resident pass.
- Depending on the grade level, English as an Additional Language support may be available. Elementary School accepts a managed number of students with a wide range of language proficiency. Middle and High School require a minimum level of proficiency. Please talk to the Admissions team for further details.



Scan the QR code for more information about applying to ISKL.



MEET OUR ADMISSIONS TEAM
(L-R) Yvonne Lim, Bavani Velaiyathan, Haw-Yinn Wai,
Christina Decu, Wendy Wong and Jit Kaur.

“On our first visit to ISKL, our children were spoken to with kindness, respect and a genuine interest in who they were as individuals. This simple, yet often overlooked exchange, set the scene for how they would later be nurtured in their classroom environments.”

- ES Parent

WE ARE HERE TO HELP

Choosing the best fit school for your child is an important decision. We invite you to come and visit us so that you can talk with our Admissions team, meet students, and explore our campus.



GRADE PLACEMENT EQUIVALENTS

ISKL operates on a Northern Hemisphere calendar, with the academic year commencing in August. Our school year comprises two semesters, which run August - December, and January - June. Grade placement is based on previous school experience and the student's age. Please contact our Admissions team for more details.

ISKL	US, Canada	Malaysia, Singapore	Korea, Japan, China, Taiwan	UK	India	Australia	New Zealand
Prep Reception	Nursery	Nursery	Nursery	Nursery	Nursery	Nursery	Nursery
Prep Junior	Pre Kindergarten	Pre Kindergarten	Pre Kindergarten	Reception	KG 1	Pre Kindergarten	Reception
Prep Senior	Kindergarten	Kindergarten	Kindergarten	Year 1	KG 2	Kindergarten	Year 1
Grade 1	Grade 1	Standard 1 Primary 1	Grade 1	Year 2	Class 1 Standard 1	Year 1	Year 2
Grade 2	Grade 2	Standard 2 Primary 2	Grade 2	Year 3	Class 2 Standard 2	Year 2	Year 3
Grade 3	Grade 3	Standard 3 Primary 3	Grade 3	Year 4	Class 3 Standard 3	Year 3	Year 4
Grade 4	Grade 4	Standard 4 Primary 4	Grade 4	Year 5	Class 4 Standard 4	Year 4	Year 5
Grade 5	Grade 5	Standard 5 Primary 5	Grade 5	Year 6	Class 5 Standard 5	Year 5	Year 6
Grade 6	Grade 6	Standard 6 Primary 6	Grade 6	Year 7	Class 6 Standard 6	Year 6	Year 7
Grade 7	Grade 7	Form 1 Secondary 1	Junior High 1	Year 8	Class 7 Standard 7	Year 7	Year 8
Grade 8	Grade 8	Form 2 Secondary 2	Junior High 2	Year 9	Class 8 Standard	Year 8	Year 9
Grade 9	Grade 9	Form 3 Secondary 3	Junior High 3	Year 10	Class 9 Standard 9	Year 9	Year 10
Grade 10	Grade 10	Form 4 or 5 Secondary 4 or 5	Senior High 1	Year 11	Class 10 Standard 10	Year 10	Year 11
Grade 11	Grade 11	Form 6 (L) Junior College 1	Senior High 2	Year 12	High Sec 1	Year 11	Year 12
Grade 12	Grade 12	Form 6 (U) Junior College 2	Senior High 3	Year 13	High Sec 2	Year 12	Year 13

Ready to join the ISKL community?

4 STEPS TO BECOMING A PANTHER:

France	Netherlands	Norway	International Baccalaureate
Maternelle Petite			Nursery
Maternelle Moyenne	Groep 1		Reception
Maternelle Grande	Groep 2	Year 1	PYP 1
Elementaire CP	Groep 3	Year 2	PYP 2
Elementaire CE 1	Groep 4	Year 3	PYP 3
Elementaire CE 2	Groep 5	Year 4	PYP 4
Elementaire CM 1	Groep 6	Year 5	PYP 5
Elementaire CM 2	Groep 7	Year 6	PYP 6
College 6 ^{eme}	Groep 8	Year 7	MYP 1
College 5 ^{eme}	Brugklas	Year 8	MYP 2
College 4 ^{eme}	2e Jaar	Year 9	MYP 3
College 3 ^{eme}	3e Jaar	Year 10	MYP 4
Lycee 2 ^{nde}	4e Jaar	Year 11	MYP 5
Lycee 1 ^{ere}	5e Jaar	Year 12	IBDP (1st Year)
Lycee Terminale	6e Jaar	Year 13	IBDP (2nd Year)



Step 1

- Go to iskl.openapply.com or scan the QR code.



- Click on Start Your Application for Admission.
- Complete the online form.
- Pay the non-refundable application fee.
- Upload all the required documents on the checklist.
- Receive confirmation your application has been submitted!



Step 2

- Our Admissions team will undertake an initial review of your application after you have submitted all the required documents.
- We will be in touch if admissions screening is required for Grade 1-12 applicants.
- Screening is required for all Early Childhood applicants (Prep Reception, Prep Junior, Prep Senior).



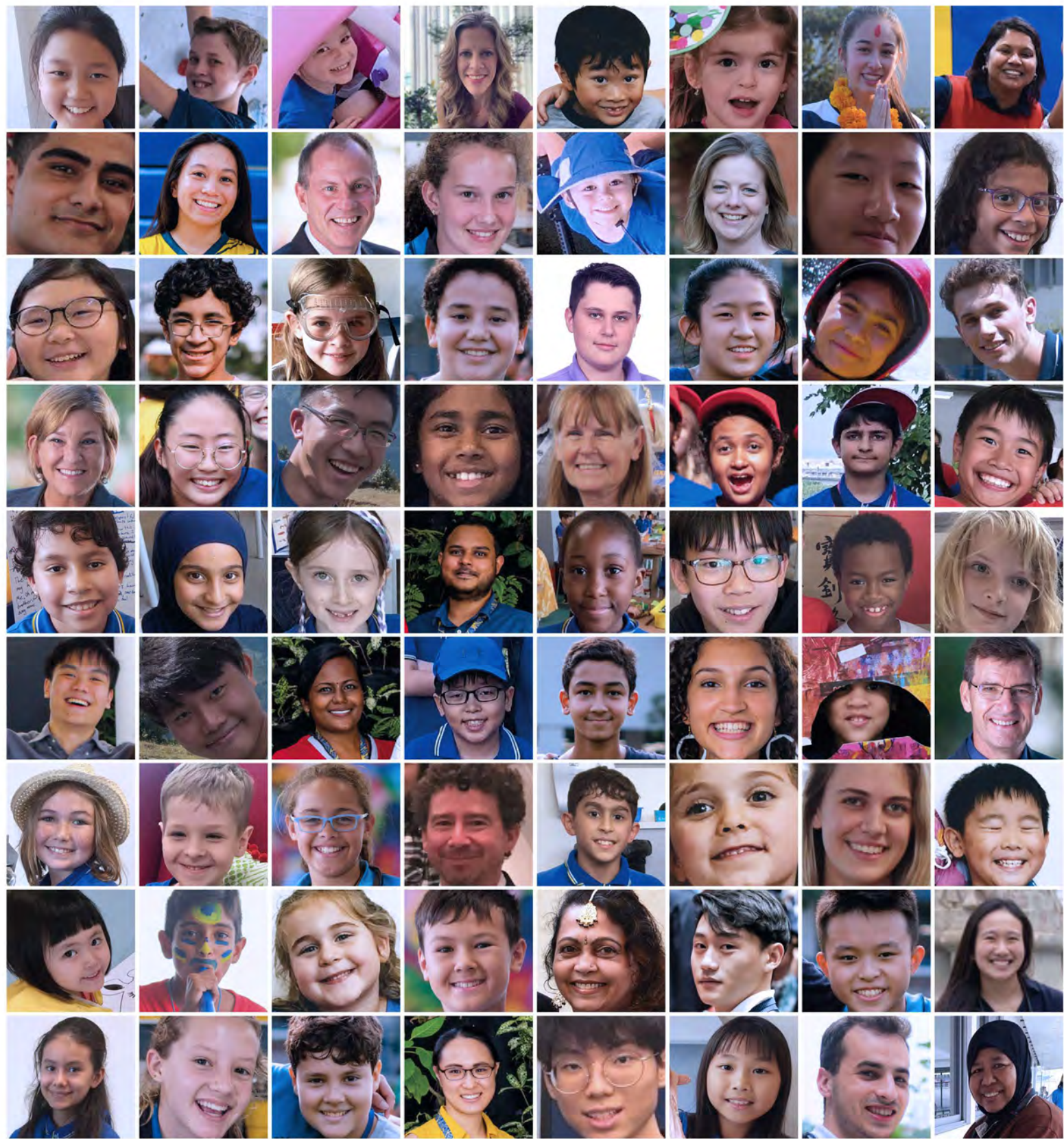
Step 3

- Our Admissions Committee will review your application.



Step 4

- If the assessment of your application is successful, an offer of a place will be made.
- Our Admissions team is always happy to answer any questions and can be contacted at admissions@iskl.edu.my



THE INTERNATIONAL SCHOOL OF KUALA LUMPUR

No. 2, Lorong Kelab Polo Di Raja, 55000 Kuala Lumpur, Malaysia.

T: +603 4813 5000 | F: +603 4813 5100

E: admissions@iskl.edu.my | W : www.iskl.edu.my

To stay up to date with all the latest ISKL news, please check our social media channels @ISKLOfficial

