



Wear **M*e*i** 2026  
Designed in France

## Wear Moi

375 Avenue Saint Just  
83130 La Garde - FRANCE  
Phone: +33 (0) 498 01 6000  
Email: [info@wearmoi.com](mailto:info@wearmoi.com)

## Wear Moi (North, Central and South America)

3352 N Broadway - Chicago IL 60657 - USA  
Phone: +1 (773) 850 3119  
Email: [usa@wearmoi.com](mailto:usa@wearmoi.com)

Ladies & Girls.....	4
Warm up & Activewear.....	76
Men & Boys.....	96
Shoes & Tights.....	118
Shoe Accessories.....	172
Tights.....	174
Accessories.....	180
Custom By Moi.....	184
More Color Choice.....	186
Your Logo Your Way.....	188
Size Chart.....	192



# Wear Mei

Designed in France

## LADIES & GIRLS





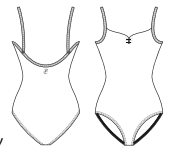


# ABIE



Children: 4/6 - 6/8 - 8/10 - 10/12 - 12/14  
Ladies: XS - S - M - L - XL \*\* - XXL\*\* - XXXL\*\*

\* Not available in sizes 4/6 and 6/8 \*\* Available in Black, Navy and Burgundy only



Basic, simple and elegant camisole leotard with a mid-back profile and front pinch. Available in 25 colors.  
Microfiber - Front lining

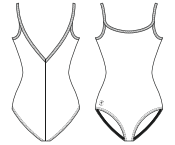


# THALIA

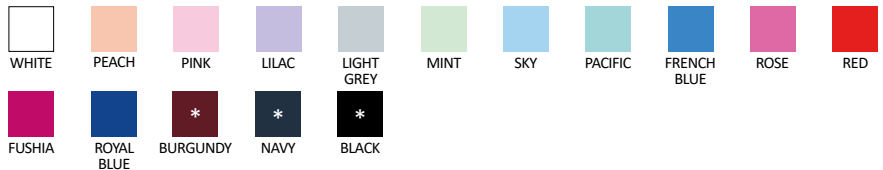


Children: 4/6 - 6/8 - 8/10 - 10/12 - 12/14  
Ladies: XS - S - M - L

\* Not available in sizes 4/6 and 6/8



Basic camisole leotard with a V-back and back seam. Available in 16 colors.  
Microfiber - Front lining



# GALATE



Children: 4/6 - 6/8 - 8/10 - 10/12 - 12/14  
Ladies: XS - S - M - L - XL\*\* - XXL\*\*

\* Not available in sizes 4/6 and 6/8  
\*\* Available in Black and Navy



Elegant pinch front tank leotard with under bust detail made with soft microfiber.  
Microfiber - Front lining



# EMERAUDE

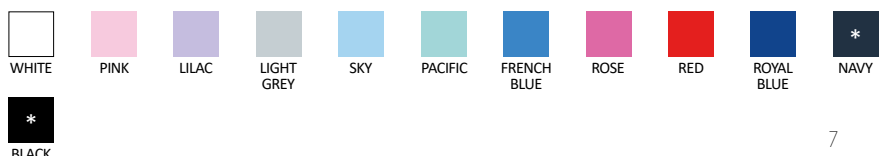


Children: 4/6 - 6/8 - 8/10 - 10/12 - 12/14  
Ladies: XS - S - M - L - XL \*\* - XXL\*\*

\* Not available in sizes 4/6 and 6/8  
\*\* Available in Black and Navy only



Basic square front tank style leotard. Available in 12 colors.  
Microfiber - Front lining



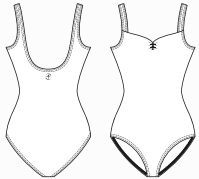


# FAUSTINE



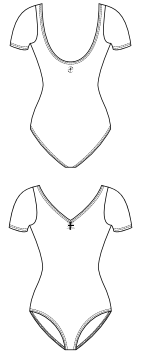
Children: 4/6 - 6/8 - 8/10 - 10/12 - 12/14  
 Ladies: XS - S - M - L - XL\*\* - XXL\*\* - XXXL\*\*  
 \* Not available in sizes 4/6 and 6/8  
 \*\* Available in Black, Navy and Burgundy only

Microfiber basic tank leotard with front pinch.  
 U-cut back. Available in 25 colors.  
 Microfiber - Front lining





# CANDIDE



Children: 2/4 - 4/6 - 6/8 - 8/10 - 10/12 - 12/14

Ladies: XS - S - M - L - XL\*\* - XXL\*\*

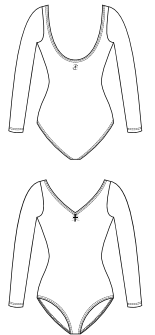
\* Not available in sizes 2/4, 4/6 and 6/8

\*\* Available in Black, Navy and Burgundy only

Classic short sleeve leotard with gathered scoop neckline and scoop back.  
Microfiber - Front lining



# LOVINA



Children: 8/10 - 10/12 - 12/14

Ladies: XS - S - M - L - XL\*\* - XXL\*\*

\*\* Available in Black, Navy, and Burgundy only

Classic long sleeve leotard with gathered scoop neckline and scoop back.  
Microfiber - Front lining



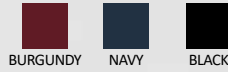
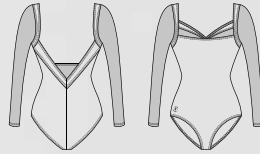


# LAVANDE



Ladies: XS - S - M - L - XL - XXL

Long-sleeved microfiber leotard with sheer stretch tulle showcasing the arms, neckline, and back. Deep open back.  
Microfiber - Stretch Tulle - Front lining



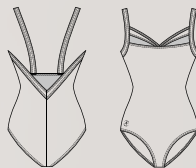
# CYPRES



Children: 8/10 - 10/12 - 12/14  
Ladies: XS - S - M - L - XL\* - XXL\*

*\* Available in Black only*

Microfiber camisole leotard with sheer tulle at the upper neckline and a triangle cut-out on the back. Deep open back.  
Microfiber - Stretch Tulle - Front lining





Collection  
Empire



GALLI

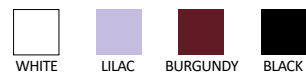
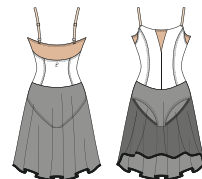
Children: 8/10 - 10/12 - 12/14

Ladies: XS - S - M - L - XL\* - XXL\*

*\* Available in Black only*

Camisole skirted leotard scoop neckline with adjustable straps and V-cut mesh neckline. Transparent back mesh panel. Its long skirt makes it a perfect uniform for any performance.

Microfiber - Stretch Tulle - Front lining





## RUBY



Children: 6/8\* - 8/10 - 10/12 - 12/14

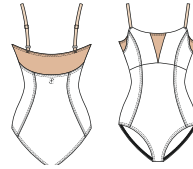
Ladies: XS - S - M - L - XL\*\* - XXL\*\*

\* Available in White, Black and Pink only

\*\* Available in Black, Navy, and Burgundy only

Camisole leotard scoop neckline with adjustable straps and V-cut mesh neckline. Transparent back mesh panel. Perfect uniform for any performance.

Microfiber - Stretch Tulle - Front lining



## VOLANTE



Children: 6/8\* - 8/10 - 10/12 - 12/14

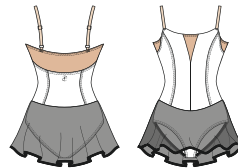
Ladies: XS - S - M - L - XL\*\* - XXL\*\*

\* Available in Pacific and White only

\*\* Available in Black only

Camisole skirted leotard scoop neckline with adjustable straps and V-cut mesh neckline. Transparent back mesh panel. Perfect for competitions or shows.

Microfiber - Stretch Tulle - Front lining







# HARLOW



Ladies: XS - S - M - L

Sleek leotard with thin straps, a tulle neckline insert, and crisscross back straps with tulle accents. Includes a discreet chest pocket for removable bra inserts.

Microfiber - Stretch Tulle - Front lining



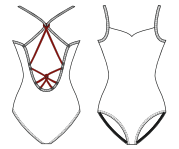
# PAGE



Ladies: XS - S - M - L

Discover PAGE, featuring a sleek front with a front pinched for a feminine touch. The bold back has elegant crossed straps, and the front includes a discreet chest pocket for removable bra inserts.

Microfiber - Front lining



# DOLORES



Ladies: XS - S - M - L - XL\* - XXL\*

\* Available in Black and Navy only

Leotard featuring short sleeves, a V-neckline, and a unique diamond-patterned tulle back. Includes a discreet chest pocket for removable bra inserts.

Microfiber - Stretch Tulle - Front lining



# ANGELIQUE



Children: 8/10 - 10/12 - 12/14

Ladies: XS - S - M - L - XL\*\* - XXL\*\*

\* Available in adult size only

\*\* Available in Black and Navy only

This camisole leotard balances simplicity and originality with a solid color front and classic pinch. The back features interlacing straps for secure hold.

Microfiber - Front lining





# MAUVE



Children: 8/10 - 10/12 - 12/14  
Ladies: XS - S - M - L - XL\*\* - XXL\*\*  
*\* Available in adult size only*  
*\*\* Available in Black and Navy only*



A new take on uniforms, Mauve features fashion strappy on the back, and all business on the front. The best of two worlds combined in this basic/fashion piece. Pinched front, strappy back.  
Microfiber - Front lining



# MARIE



Ladies: XS - S - M - L - XL\* - XXL\*  
*\* Available in Black and Navy only*



A beautiful timeless look created by this basic/fashion leotard. Fun crisscross straps on the back with medium U-drop back. Pinched front.  
Microfiber - Front lining



# REMOVABLE BRA INSERT



Girls: 10/14\*  
Ladies: XS/S - M/L  
*\* Available in Beige only*



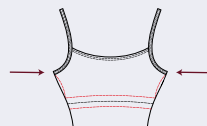
Enjoy comfort and support with our removable bra insert for FlexiFit Support leotards. Discreet, flexible, and stage-ready.  
Polyester



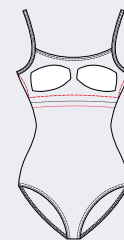
## Wear Me!

### FlexiFit Support

#### How To Use?



Fold the pad in half to facilitate its insertion through the opening on the side, inside the lining

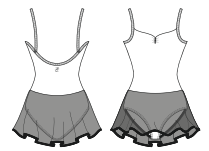


Adjust the pads in the leotard at your convenience





# BALLERINE



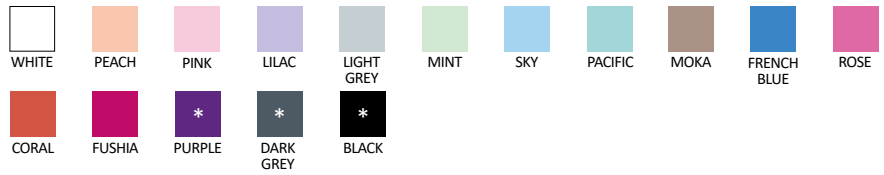
Children: 4/6 - 6/8 - 8/10 - 10/12 - 12/14

Ladies: XS - S - M - L - XL\*\* - XXL\*\*

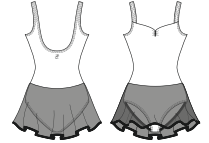
\* Not available in sizes 4/6 and 6/8

\*\* Available in Black only

Microfiber basic, simple and elegant camisole dress, with a mid-back profile, front pinch and attached four-way stretch tulle skirt.  
Microfiber - Stretch Tulle - Front lining



# BALKALA



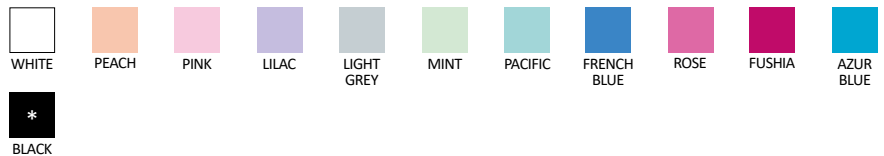
Children: 4/6 - 6/8 - 8/10 - 10/12 - 12/14

Ladies: XS - S - M - L - XL\*\* - XXL\*\*

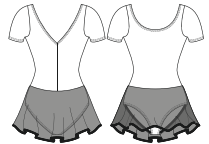
\* Not available in sizes 4/6 and 6/8

\*\* Available in Black only

Microfiber basic tank dress with front pinch. U-cut back and attached four-way stretch tulle skirt.  
Microfiber - Stretch Tulle - Front lining



# ARDESIA



Children: 4/6 - 6/8 - 8/10 - 10/12 - 12/14

Ladies: XS - S - M - L

Short sleeve microfiber basic dress, featuring a modest, high back-cut and an attached four-way stretch tulle skirt.

Microfiber - Stretch Tulle - Front lining



# AZUREA



Children: 6/8 - 8/10 - 10/12 - 12/14

Ladies: XS - S - M - L - XL\* - XXL\*

\* Available in Black only

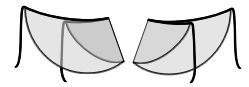
This thin-strapped camisole dress, with empire mesh tulle overlay is perfect for the studio and will look absolutely dazzling on stage.

Microfiber - Stretch Tulle - Front lining



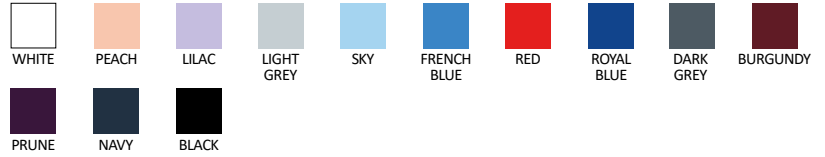


# ALEGRO



Children: 4/8 - 8/12  
Ladies: XS/S - M/L - XL/XXL\*\*  
\*\* Available in Black only

Sheer four-way stretch tulle wrap skirt, featuring a stretch waistband and beautiful hem. Ideal for uniforms.  
Stretch Tulle - Microfiber



# DOLLY



Children: 4/8 - 8/12  
Ladies: XS/S - M/L - XL/XXL\*  
\* Available in Black only

This classic length faux wrap skirt is made from four-way stretch mesh with exclusive Wear Moi hem.  
Stretch Tulle - Microfiber



# DELIA



Children: 4/8 - 8/12  
Ladies: XS/S - M/L - XL/XXL\*  
\* Available in Black only

A longer style faux wrap skirt. Beautiful four-way stretch mesh and signature Wear Moi hem.  
Stretch Tulle - Microfiber



# DAPHNE



Children: 4/8 - 8/12  
Ladies: XS/S - M/L - XL/XXL\*\*  
\* Not available in sizes 4/8  
\*\* Available in Black and Navy only

Sheer four-way stretch tulle pull on skirt features a color-matched elastic waistband. Length of the skirt depends on size.  
Stretch Tulle





# MAGDA

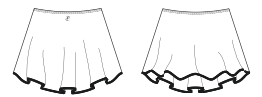


Children: 4/8 - 8/12

Ladies: XS/S - M/L - XL/XXL\*\*

\* Not available in sizes 4/8

\*\* Available in Black and Navy only



A 4 cm addition to our most popular skirt, Daphne, makes this four-way stretch mesh pull on skirt a must have.  
Stretch Tulle



WHITE



LILAC



FRENCH  
BLUE



PURPLE



DARK  
GREY



BURGUNDY



FOREST  
GREEN



NAVY



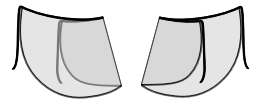
BLACK



# APOLO



Ladies: XS/S - M/L - XL/XXL



A long wrap skirt for ladies, constructed of beautiful four-way stretch mesh and a flexible waist band. Perfect for adults and teachers.  
Stretch Tulle - Microfiber



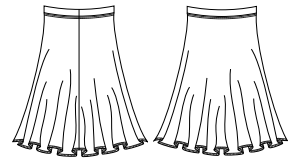
BLACK



# FADO

Children: 8/10 - 10/12

Ladies: XS/S - M/L - XL/XXL



Below the knee character skirt.  
Soft microfiber full circle skirt with an elastic waistband.  
Microfiber



BLACK

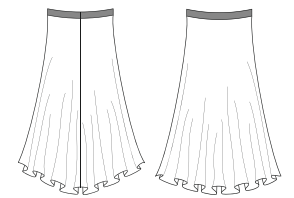


# MELINA



Children: 8/12

Ladies: XS/S - M/L - XL/XXL



This knee-length transparent tulle skirt with a microfiber waistband adds smooth, elegant movement to your rehearsal look.  
Stretch Tulle - Microfiber



WHITE



BURGUNDY



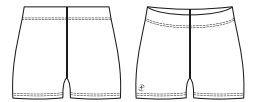
NAVY



BLACK

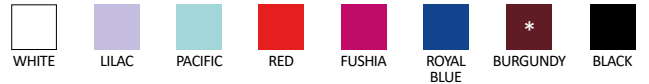


# GIPSY

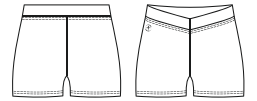


Children: 4/6 - 6/8 - 8/10 - 10/12  
Ladies: XS - S - M - L - XL\*\* - XXL\*\*  
*\* Not available in sizes 4/6 and 6/8*  
*\*\* Available in Black only*

Gipsy short features soft microfiber elastane fabric and a comfortable elastic waistband.  
Microfiber



# MACARON

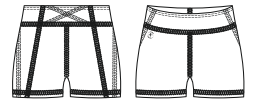


Children: 6/8 - 8/10 - 10/12  
Ladies: XS - S - M - L - XL - XXL

These hotpant shorts provide a flattering silhouette in the studio or on stage.  
Microfiber



# ARIELLE



Children: 6/8 - 8/10 - 10/12  
Ladies: XS - S - M - L - XL - XXL

Booty shorts that fit at the natural waistline. Perfect for any dance style.  
Microfiber

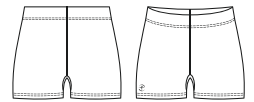






# ANDESITE

Children: 8/10 - 10/12  
Ladies: XS - S - M - L - XL - XXL



Basic microfiber short undergarment, offering a gusset for maximum flexibility.  
Soft Microfiber- Cotton-lined gusset



# AELIS

Ladies: XS - S - M - L - XL - XXL



Comfortable thong for dancers, thin four-way stretch mesh and soft microfiber help this undergarment disappear under any leotard or costume piece.  
Soft Microfiber - Stretch Tulle - Cotton-lined gusset



# DIV 117



Children: 4/6 - 6/8 - 8/10 - 10/12 - 12/14  
Ladies: XS/S - M/L - XL/XXL\*

\* Available in Black and Navy only

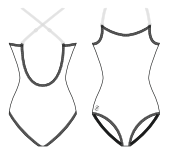
Accentuate your waistline with our stretchy microfiber belt, available in 27 colors to match your dance outfit. The perfect accessory to showcase your silhouette.  
Microfiber





# AZTEC

Children: 8/10 - 10/12  
Ladies: XS - S - M - L - XL - XXL



Un-lined camisole undergarment, designed to provide additional coverage and support. Equipped with clear, detachable straps.  
Soft Microfiber- Cotton-lined gusset



# ALIAS

Children: 8/10 - 10/12  
Ladies: XS - S - M - L - XL - XXL



Nude pull-on athletic bra, with detachable clear straps.  
Soft Microfiber



# ADELA

Children: 8/10 - 10/12 - 12/14  
Ladies: XS - S - M - L - XL - XXL



Comfortable high-waisted brief with soft elastic at the waist and elastic finishes on the thighs.  
Soft Microfiber - Cotton-lined gusset



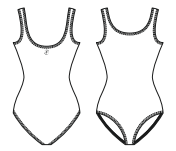




Microfiber

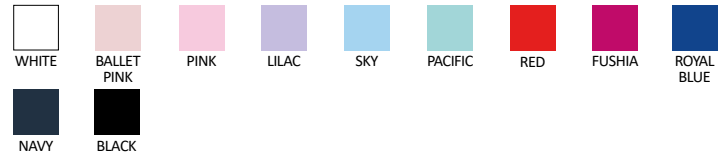


# CABRIOLE

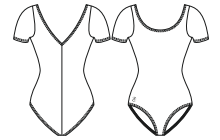


Children: 2/4 - 4/6 - 6/8 - 8/10 - 10/12 - 12/14  
Ladies: XS - S - M - L - XL

Classic tank leotard with high scoop neck front and back, available in various colors.  
Microfiber - Front lining

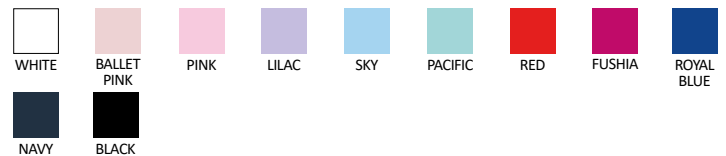


# PIROUETTE



Children: 2/4 - 4/6 - 6/8 - 8/10 - 10/12 - 12/14  
Ladies: XS - S - M - L - XL

Short-sleeved leotard with scoop neck and ballet cut legline.  
Microfiber - Front lining



# ARABESQUE



Children: 2/4 - 4/6 - 6/8 - 8/10 - 10/12 - 12/14  
Ladies: XS - S - M - L - XL

3/4 length-sleeved leotard with round neckline and ballet cut legline.  
Microfiber - Front lining



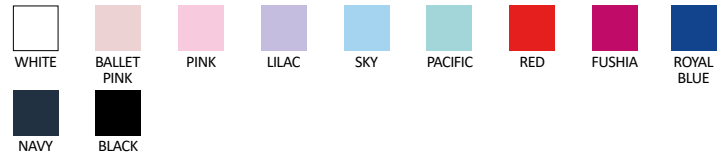


# CONCERTO



Children: 2/4 - 4/6 - 6/8 - 8/10 - 10/12 - 12/14  
Ladies: XS - S - M - L - XL

Classic camisole leotard with scoop neck front and back and ballet cut legline. Available in many colors.  
Microfiber - Front lining

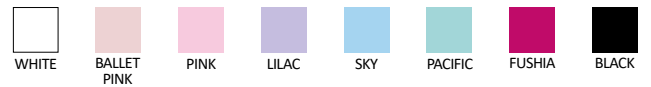
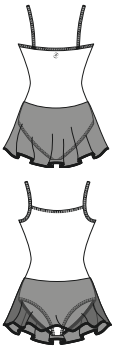


# BAGATELLE



Children: 2/4 - 4/6 - 6/8 - 8/10 - 10/12 - 12/14  
Ladies: XS - S - M - L - XL

Skirted leotard with camisole top, scoop neck, and ballet cut legline. Features an attached tulle skirt.  
Microfiber - Stretch Tulle - Front lining





# GLISSADE



Ladies: XS - S - M - L - XL

Leotard with wide straps and sweetheart neckline, featuring princess seams and empire waist cut.  
Cotton - Elastane - Front lining



NAVY



BLACK

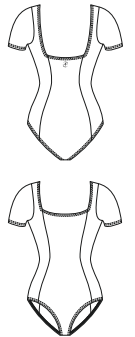


# REVERENCE



Ladies: XS - S - M - L - XL

Short-sleeved leotard with square neckline and princess seams. Features a moderate legline and double-stitched seams.  
Cotton - Elastane - Front lining



NAVY



BLACK

# Collection PREMIÈRE Cotton

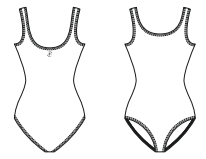




# ETUDE



Children: 2/4 - 4/6 - 6/8 - 8/10 - 10/12 - 12/14  
Ladies: XS - S - M - L - XL



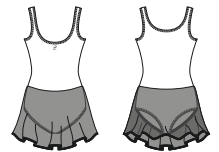
Tank leotard with scoop neck front and modest scoop back, featuring ballet cut legline and double-stitched seams.  
Cotton - Elastane - Front lining



# ENTRECHAT



Children: 2/4 - 4/6 - 6/8 - 8/10 - 10/12 - 12/14



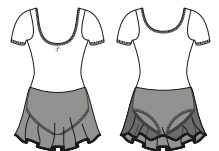
Skirted tank leotard with scooped neckline and ballet cut legline. Features an attached tulle skirt.  
Cotton- Elastane - Stretch Tulle - Front lining



# ADAGE



Children: 2/4 - 4/6 - 6/8 - 8/10 - 10/12 - 12/14



Skirted leotard with short sleeves and scoop neck, featuring an attached tulle skirt.  
Cotton - Elastane - Stretch Tulle - Front lining





# PRELUDE

Children: 2/4 - 4/6 - 6/8 - 8/10 - 10/12 - 12/14  
Ladies: XS - S - M - L - XL

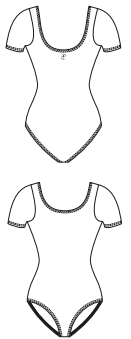
Camisole leotard with scoop neck and ballet cut legline, featuring double-stitched seams for durability.  
Cotton - Elastane - Front lining



# OPERA

Children: 2/4 - 4/6 - 6/8 - 8/10 - 10/12 - 12/14  
Ladies: XS - S - M - L - XL

Short-sleeved leotard with scoop neck and ballet cut legline, perfect for studio work.  
Cotton - Elastane - Front lining



# Collection Allure



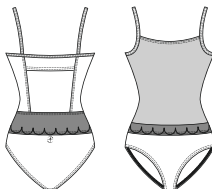


## COLETTE

Children: 10/12 - 12/14

Ladies: XS - S - M - L

Camisole leotard with square open back and see through design, for both a timeless and modern look. Includes an inner supportive elastic band and discreet pocket for removable bra inserts. Microfiber - Embroidered Stretch Tulle - Front lining



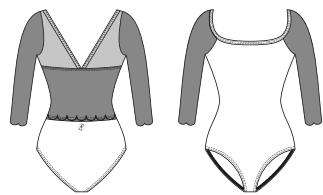
WHITE MOKA BURGUNDY NAVY BLACK



# NEREA

Children: 10/12 - 12/14  
Ladies: XS - S - M - L

3/4 sleeve leotard with a see-through design and a V-shaped tulle back panel, both stylish and functional. Includes an inner supportive elastic band and discreet pocket for removable bra inserts. Microfiber - Embroidered Stretch Tulle - Stretch Tulle - Front lining



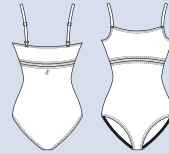




SEPIK 

Ladies: XS - S - M - L

Camisole leotard in heathered jersey with adjustable straps. Underbust and side panels for a sporty look. Includes an inner elastic band and a discreet pocket for removable bra inserts. Microfiber- Stretch Tulle- Front lining

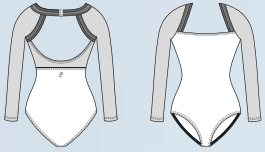


Collection  
Tilda

# SEPHIRA

Ladies: XS - S - M - L

Raglan long-sleeve leotard in heathered jersey with open back, metal clasp, inner elastic band, and discreet bra insert pocket.  
Microfiber- Stretch Tulle- Front lining

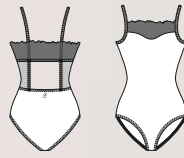


# JASMIN

Ladies: XS - S - M - L

Embroidered tulle panels with sea flower details add delicate transparency to this camisole leotard, combining elegance and comfort.

Microfiber - Embroidered Stretch Tulle - Stretch Tulle - Front lining

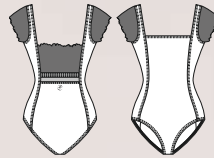


# LISERON

Ladies: XS - S - M - L

Leotard with embroidered stretch tulle on the back, shoulders, and waist, featuring a square neckline and structured design.

Microfiber - Embroidered Stretch Tulle - Stretch Tulle - Front lining



Collection  
Ecrin Bleu



# FELICITE

Ladies: XS - S - M - L

Fancy high-neck long-sleeved leotard with front zipper. Sheer back, sleeves, and shoulders reveal the skin and contour the body with large flowers, like a tattoo.

Microfiber - Flocked Stretch Tulle - Front lining





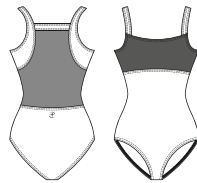




## LAIKA

Ladies: XS - S - M - L

Fancy wide straps leotard cut-out along the bust, detailed with rose pattern flocked tulle front yoke. The back of the leotard is made of sheer stretch tulle, attached by solid color microfiber bands. Microfiber - Flocked Stretch Tulle - Front lining



BLACK



*Opt for refined  
arabesques*



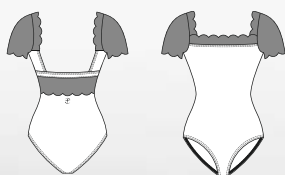




# EMMA

Ladies: XS - S - M - L

Chic cap sleeve leotard in flocked light beige mesh with an open square mid-back and lace-like panel. Classic ballet leg cut. Microfiber - Flocked Stretch Tulle - Front Lining



BLACK

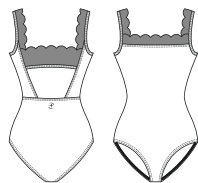




# ARLETTY

Ladies: XS - S - M - L

Tank-style leotard in lace-like flocked mesh with back support that can hide a nude bra. Open lower back adds a unique touch. Microfiber - Flocked Stretch Tulle - Front lining





Collection **Précieuse**

*as precious as you*



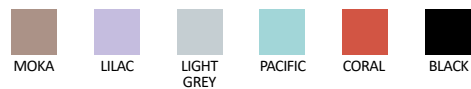
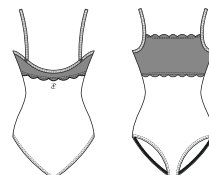
# ETERNA

Children: 8/10 - 10/12 - 12/14

Ladies: XS - S - M - L

Camisole leotard with straight neckline, scoop back and floral embroidered tulle overlay. Includes a discreet pocket for removable bra inserts.

Microfiber - Embroidered Stretch Tulle  
- Front lining

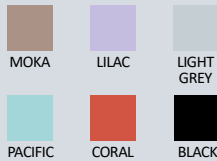
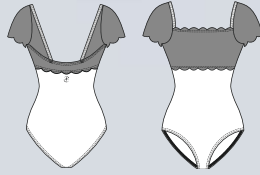




# NARCISSE

Children: 8/10 - 10/12 - 12/14  
Ladies: XS - S - M - L

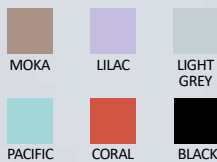
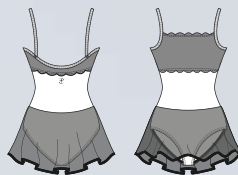
Short-sleeve leotard in embroidered tulle with a deep open back. Includes a discreet pocket for removable bra inserts.  
Microfiber - Embroidered Stretch Tulle- Front lining



# SERENITE

Children: 8/10 - 10/12 - 12/14  
Ladies: XS - S - M - L

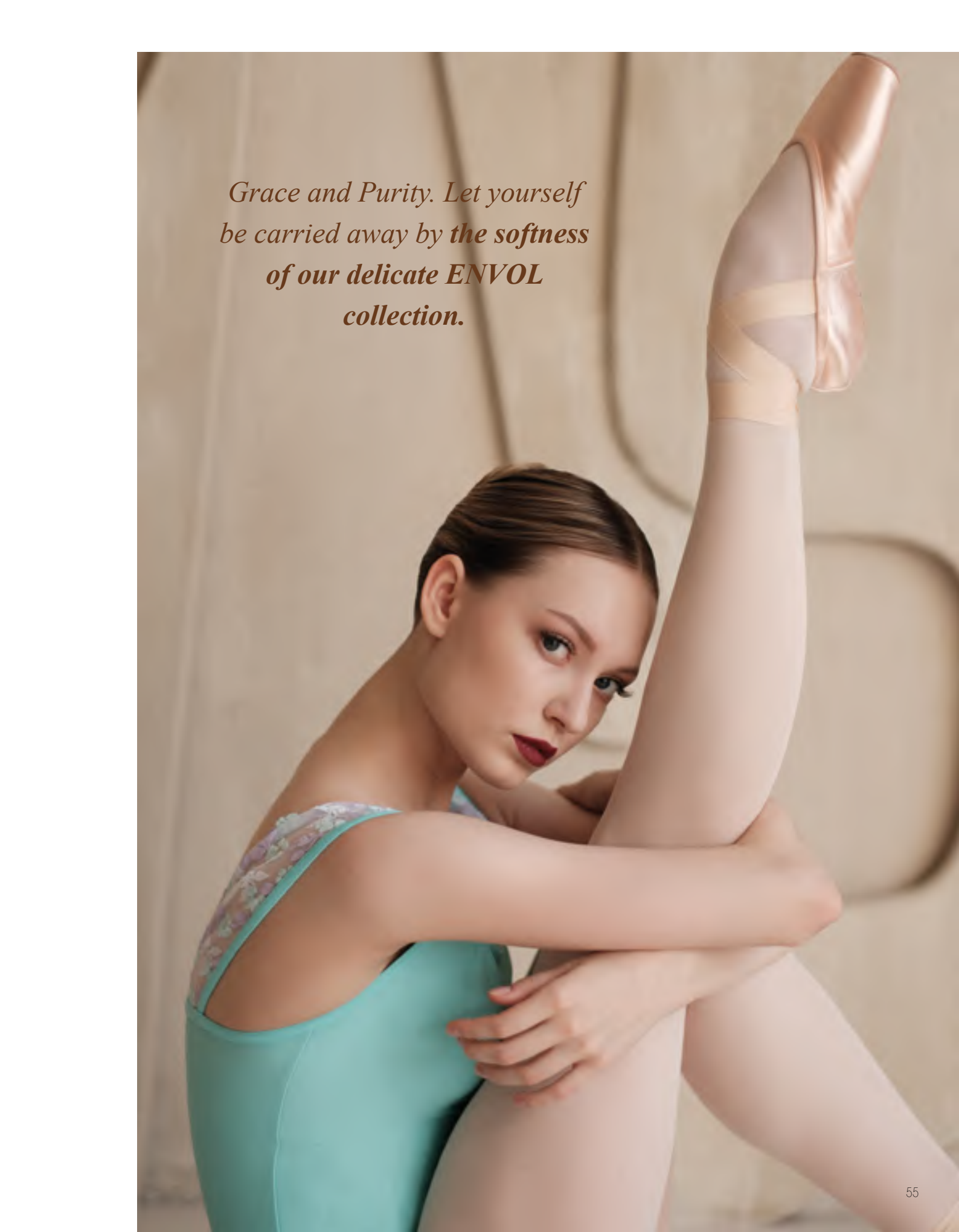
Skirted camisole leotard with straight neckline, scoop back and floral embroidered tulle overlay.  
Microfiber- Embroidered Stretch Tulle- Stretch Tulle - Front lining





# Collection Envol



A ballerina with her hair pulled back is captured in a graceful pose. She is wearing a teal leotard with a lace detail on the shoulder and light pink tights with matching pink pointe shoes. Her right leg is extended vertically, held by her left hand. She is looking towards the camera with a serene expression. The background is a soft, out-of-focus studio setting.

*Grace and Purity. Let yourself  
be carried away by the softness  
of our delicate ENVOL  
collection.*



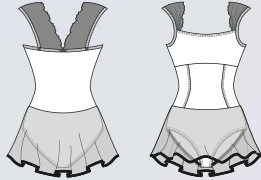
# KAMAE

Children: 6/8 - 8/10 - 10/12 - 12/14

Ladies: XS - S - M - L

KAMAE dress, a skirted version of the GEMMA leotard, features wide straps with embroidered lace and front seams for enhanced fluidity.

Microfiber - Embroidered Stretch  
Tulle - Stretch Tulle - Front Lining



WHITE



LILAC



PACIFIC







# GEMMA

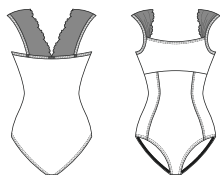
Children: 6/8 - 8/10 - 10/12 - 12/14

Ladies: XS - S - M - L

\*not available in children size

Tank leotard with wide straps and embroidered lace. Princess seams shape the silhouette, and the straight neckline provides support.

Microfiber - Embroidered  
Stretch Tulle - Front Lining



WHITE



LILAC



PACIFIC




BLACK/  
BRONZE



BLACK/  
BLUE





*Grace and Purity. Let yourself be carried away by **the softness of our delicate ENVOL collection.***



# REINE

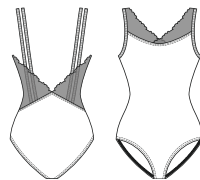
Children: 6/8 - 8/10 - 10/12 - 12/14

Ladies: XS - S - M - L

\*not available in children size

Leotard in embroidered tulle and microfiber. Features double straps, tulle-accented neckline, and a V-back.

Microfiber - Embroidered  
Stretch Tulle - Front Lining



WHITE



LILAC



PACIFIC



BLACK/  
BRONZE



BLACK/  
BLUE

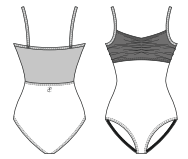
Collection  
Mademoiselle



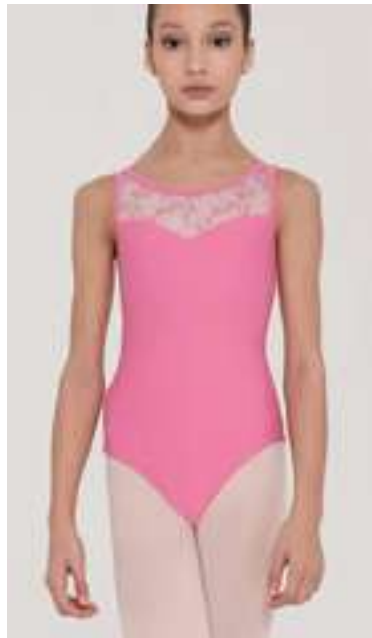


# CIRNUM

Children: 6/8 - 8/10 - 10/12 - 12/14  
Ladies: XS - S - M - L

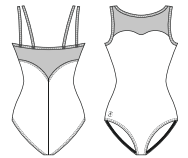


Floral-patterned leotard with a tulle-covered microfiber panel for bust support. The back reveals skin with tulle extending to the waist.  
Microfiber - Embroidered Stretch Tulle - Front Lining



# BELMINE

Children: 6/8 - 8/10 - 10/12 - 12/14  
Ladies: XS - S - M - L



Double-strapped camisole leotard with embroidered tulle connecting the sweetheart neckline and tapered back. Made from elastane microfiber.  
Microfiber - Embroidered Stretch Tulle - Front lining



# LOBELIA

Children: 4/8 - 8/12  
Ladies: XS/S - M/L



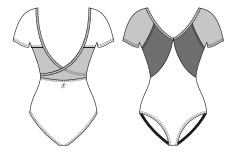
Short ballet skirt in stretch tulle with embroidered floral prints and an elasticized waistband. Complements leotards from the same line or any other solid color leotard.  
Embroidered Stretch Tulle





# MIOSOTIS

Children: 6/8 - 8/10 - 10/12 - 12/14  
Ladies: XS - S - M - L

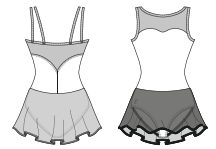


Short-sleeved leotard with V-shape front and back, crossover tulle panel, and embroidered tulle over the bust.  
Microfiber - Embroidered Stretch Tulle - Front Lining



# ALYSON

Children: 6/8 - 8/10 - 10/12 - 12/14  
Ladies: XS - S - M - L



Skirted leotard in elastane microfiber with double straps and transparent tulle panels. The two-fabric skirt features transparent tulle in front and embroidered tulle in back.  
Microfiber - Embroidered Stretch Tulle - Stretch Tulle - Front Lining



# CYPELLA

Ladies: XS/S - M/L



Asymmetrical ballet skirt, short in front and medium in back, made from embroidered stretch tulle. Finished waistband with bow at the back.  
Microfiber - Embroidered Stretch Tulle











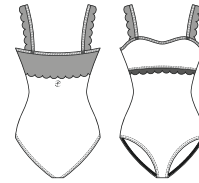
# ERINE

Children: 6/8 - 8/10 - 10/12 - 12/14

Ladies: XS - S - M - L

Tank leotard with a scalloped trim lace overlay.

Microfiber - Stretch Lace - Front lining



WHITE



LILAC



LIGHT  
GREY



PACIFIC



BLACK

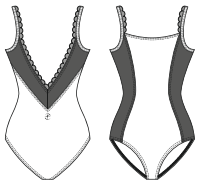


# EVIDENCE

Children: 6/8 - 8/10 - 10/12 - 12/14

Ladies: XS - S - M - L

A tank-style camisole leotard with plunging V-shaped back, with a delicate lace trim. Microfiber - Stretch Lace - Front lining



WHITE



LILAC



LIGHT  
GREY



PACIFIC



BLACK





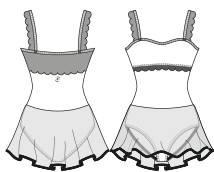


## ETINCELLE

Children: 6/8- 8/10- 10/12- 12/14

Ladies: XS- S- M- L

A tank-style dress featuring the elegant scalloped lace trim overlay and four-way stretch tulle skirt.  
Microfiber - Stretch Lace - Stretch Tulle - Front lining



WHITE



LILAC



LIGHT  
GREY



PACIFIC



BLACK



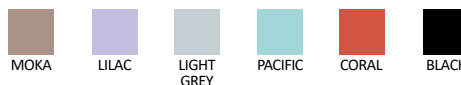
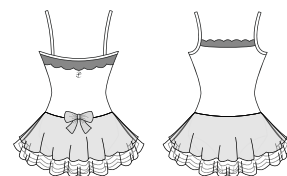
*A touch of magic, graceful in every move  
- as precious as you*

## CHARME

Children: 4/6 - 6/8 - 8/10 - 10/12

Camisole ballet baby leotard with a tutu featuring 4 layers of tulle ruffles and floral embroidered tulle. Cute bow detail at the back.

Microfiber - Stretch Tulle -  
Embroidered Stretch Tulle - Glittering  
Tulle - Front lining





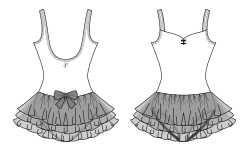
# NOISETTE



Children: 2/4 - 4/6 - 6/8 - 8/10 - 10/12 - 12/14

A pinch-front children's tutu dress with three layers of tulle and bow accent. This beautiful dress is perfect for the youngest dancer.

Microfiber - Glittering Tulle - Front lining



WHITE



PINK



SKY



ROSE



BLACK



# NUAGE

Children: 2/4 - 4/6 - 6/8 - 8/10 - 10/12 - 12/14

Beautiful pull-over children's tutu with three layers of tulle and a bow decal.

Microfiber - Glittering Tulle



WHITE



PINK



SKY



ROSE



BLACK

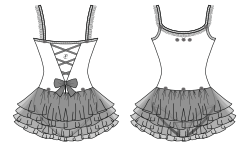


# PRALINE

Children: 2/4 - 4/6 - 6/8 - 8/10 - 10/12 - 12/14

This tutu is a stylish and classy take on a kid's fashion. This four-layer tutu dress offers soft ruffle, mini roses and crisscross detail. Any little ballerina would love this dress.

Microfiber - Glittering Tulle - Front lining



WHITE



PINK



SKY



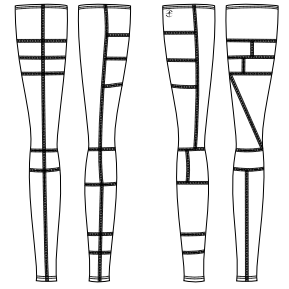
ROSE







# SUPERBE



COLOR 6  
BLACK  
GREY  
WHITE



COLOR 7  
PEACOCK BLUE  
OCEAN  
WHITE



COLOR 8  
BLACK  
AMETHISTE  
BYZANTINE

Children: 8/12  
Ladies: XS/S - M/L

Eye-catching patchwork design that offers extreme comfort. These leg warmers are sure to become a favorite.  
Knitted Acrylic Elastane



# TULIPE



COLOR 6  
BLACK  
GREY  
WHITE



COLOR 7  
PEACOCK BLUE  
OCEAN  
WHITE



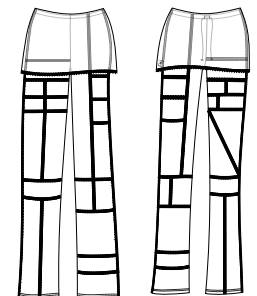
COLOR 8  
BLACK  
AMETHISTE  
BYZANTINE

Children: 8/10 - 10/12  
Ladies: XS - S - M - L

Stylish stretch knit crop-top featuring comfortable patchwork design and scoop neckline.  
Knitted Acrylic Elastane



# SYRMA



COLOR 6  
BLACK  
GREY  
WHITE



COLOR 7  
PEACOCK BLUE  
OCEAN  
WHITE



COLOR 8  
BLACK  
AMETHISTE  
BYZANTINE

Children: 8/10 - 10/12  
Ladies: XS - S - M - L

Eye-catching patchwork design that offers extreme comfort and stretch. These fold-over boot-cut pants are perfect from street to studio.  
Knitted Acrylic Elastane

# Wear Mei

Designed in France

## WARM UP & ACTIVE WEAR

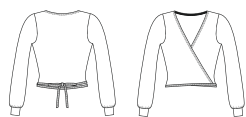




# GUIMAUVE

Children: 4/6 - 6/8 - 8/10 - 10/12

V-neck cardigan with puffed sleeves, ribbed cuffs, and a back drawstring for comfort and elegance.  
Acrylic Elastane Knit - Mettalic Lurex



BALLET  
PINK

LILAC





# BERGAMOTE

Children: 4/6 - 6/8 - 8/10 - 10/12



Loose-fit pants with an elastic waistband and back bow, tapering at the calves for warmth and style.  
Acrylic Elastane Knit - Mettalic Lurex



BALLET PINK

LILAC



# CALISSON

Children: 4/6 - 6/8 - 8/10 - 10/12



Cozy shorts with a soft waistband and back bow, offering elegance and comfort.  
Acrylic Elastane Knit - Mettalic Lurex



BALLET PINK

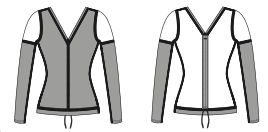
LILAC





# DANUBE

Ladies: XS - S - M - L



V-neck, long-sleeved top with soft diamond-pattern knit, one-tone sleeves, and adjustable drawstring. Ideal for layering with a leotard or warm-ups. Knitted acrylic wool



BLACK  
BEIGE

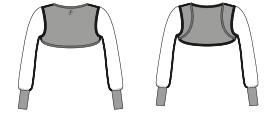


BLACK  
DARK GREY



# MELEZE

Ladies: XS - S - M - L



Lightweight knit shrug with asymmetrical diamond pattern, fitted front and fuller sleeves with wristbands. Perfect for ballet class warmth. Knitted acrylic wool



BLACK  
BEIGE

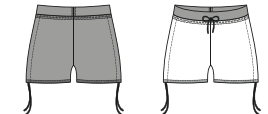


BLACK  
DARK GREY



# MAKALU

Ladies: XS - S - M - L



Two-tone knitted warm-up shorts with adjustable waist and side drawstring, tonal waist, and supportive back panel for stretching. Knitted acrylic wool



BLACK  
BEIGE

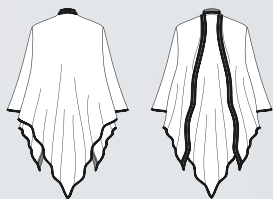


BLACK  
DARK GREY

# EREBUS

Ladies: One size

Lightweight, open-textured knit with a flowing style, perfect for draping around waist or shoulders during dance classes.  
Knitted acrylic wool



BLACK  
BEIGE



BLACK  
DARK GREY



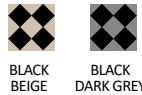


# TAGE



Ladies: XS/S - M/L

Beautiful diamond-patterned legwarmers with a secure band and elongating back trim, perfect for warm-ups. Knitted acrylic wool



BLACK BEIGE

BLACK DARK GREY

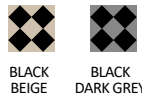


# FILAO



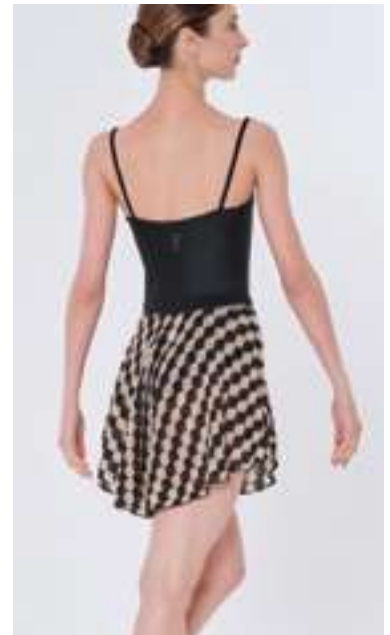
Ladies: XS/S - M/L

Flowing two-tone skirt with a shorter front and longer back for comfort and style. Knitted acrylic wool



BLACK BEIGE

BLACK DARK GREY

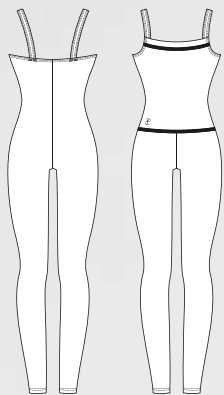


# CAPELLA

Children: 8/10 - 10/12

Ladies: XS - S - M - L

This warm up knit ankle length romper will keep you warm and comfortable in dance class.  
Knitted Acrylic Elastane



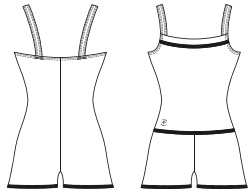
# ALOES

Children: 8/10 - 10/12

Ladies: XS - S - M - L

Our knitted romper is a versatile garment that can also be rolled down to the waist and worn as shorts.

Knitted Acrylic Elastane



GREY



BLACK

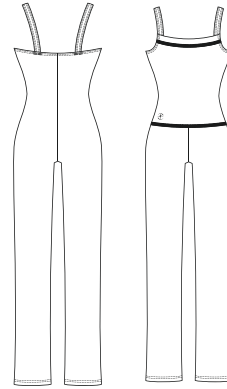
# CALOU

Children: 8/10 - 10/12

Ladies: XS - S - M - L

Our knit boot-leg pant romper is a perfect addition to your class apparel.

Knitted Acrylic Elastane



GREY



AMETHISTE



BLACK





# NAYA

Children: 8/10 - 10/12  
Ladies: XS - S - M - L



Short sleeve crop top sweater with an eye-catching design and comfortable cut.  
Knitted Acrylic Elastane



# CEYLAN

Children: 8/10 - 10/12  
Ladies: XS - S - M - L



Acrylic warm-up shorts. Elastic on the waist for a secure fit.  
Knitted Acrylic Elastane



# TIARA

Children: 8/10 - 10/12  
Ladies: XS - S - M - L



Gorgeous, warm and comfortable fold over shorts including a waist drawstring with a rolled hem.  
Knitted Acrylic Elastane

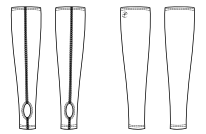




# IZALIA

Children: 4/8 - 8/12  
Ladies: XS/S - M/L

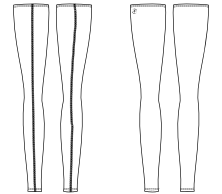
Short stirrup leg warmers.  
Knitted Acrylic Elastane



# CRISTAL

Children: 8/12  
Ladies: XS/S - M/L

Full length skinny fit leg warmers.  
Soft and comfortable.  
Knitted Acrylic Elastane



# CRYSALIDE

Children: 8/10 - 10/12  
Ladies: XS - S - M - L

A unique and flattering sweater  
waistband folds over these warm  
tights with a drawstring waist.  
Knitted Acrylic Elastane



# UTAMI

Children: 8/10 - 10/12  
Ladies: XS - S - M - L

These warm up pants feature a  
boot cut style with a fold over  
waistband.  
Knitted Acrylic Elastane



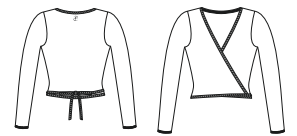
Collection PREMIÈRE  
Knitwear





# MENUET

Children: 4/6 - 6/8 - 8/10 - 10/12  
Ladies: XS - S - M - L - XL



Classic full-sleeve wrap-around top with adjustable self-ties, ideal for layering over a leotard. Made from soft knitted fabric for comfort and a perfect fit. Knitted Acrylic Elastane



# SONATE

Children: 4/6 - 6/8 - 8/10 - 10/12  
Ladies: XS - S - M - L - XL

\* Only available in adult sizes  
\*\* Only available in child sizes



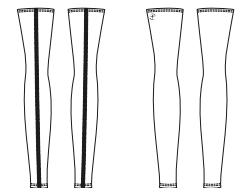
Soft, snug-fitting shorts with a ribbed fold-over waistband, adding warmth and texture to rehearsals. Designed to retain elasticity over time. Knitted Acrylic Elastane



# ATTITUDE

Children: 4/8 - 8/12  
Ladies: XS/S - M/L

\* Only available in adult sizes  
\*\* Only available in child sizes



Classic leg warmers with a soft elastic cuff at the thighs, staying in place during intense rehearsals. Made from soft knitted fabric for comfort and a perfect fit.

Attitude child: 12" - 30 cm  
Attitude adult: 18" - 45 cm  
Knitted Acrylic Elastane



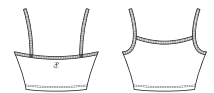


# IKITA



Children: 4/6 - 6/8 - 8/10 - 10/12  
Ladies: XS - S - M - L

Simple, elegant, classic short  
camisole top with comfortable  
waistband.  
Microfiber - Front lining

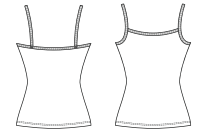


# ANA



Children: 4/6 - 6/8 - 8/10 - 10/12  
Ladies: XS - S - M - L

Simple, soft, microfiber camisole.  
Microfiber - Front lining

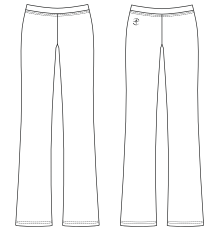


# IRIS



Children: 4/6 - 6/8 - 8/10 - 10/12  
Ladies: XS - S - M - L - XL - XXL

Classic U-cut jazz pants.  
Comfortable elastic waist band  
and soft microfiber.  
Microfiber

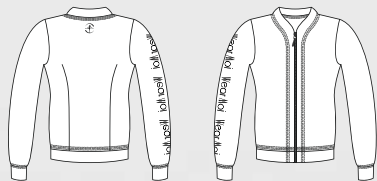




# PATIENCE

Ladies: XS - S - M - L

Fitted jacket with zippered front, embellished with silver serigraphy on the right arm. Unlined.  
Double Viscose Elastane Jersey



BLACK





# PIVOINE

Ladies: XS - S - M - L

Soft hooded jacket with front zipper, silkscreen print on the right arm, and patch pockets. Unlined.  
Double Viscose Elastane Jersey

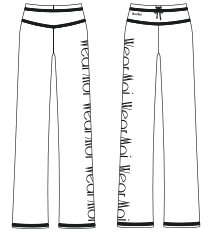


BLACK

# PALOMINO

Ladies: XS - S - M - L

Straight cut pants with yokes, wide elastic waistband, and drawstring. Features topstitched hem and silkscreen print on the right leg.  
Double Viscose Elastane Jersey

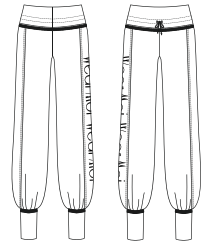


BLACK

# PANDORE

Ladies: XS - S - M - L

Wide jogging pants with ankle cuffs, lapel band waist with drawstring, and silkscreen print on the right leg.  
Double Viscose Elastane Jersey



BLACK

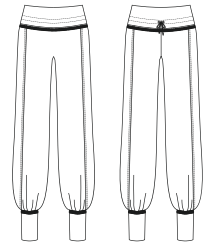


# OPUS



Children: 6/8 - 8/10 - 10/12 - 12/14  
Ladies: XS - S - M - L

Four-way stretch warm-up pants with fitted ankles and drawstring. Perfect for dancers or as a team uniform. Pair with Iliade jacket.  
Double Viscose Elastane Jersey

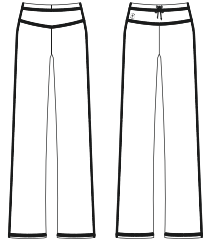


# PENELOPE



Children: 6/8 - 8/10 - 10/12 - 12/14  
Ladies: XS - S - M - L

Warm-up pants with elastic waist band and drawstring. Wide leg for a more relaxed and comfortable fit.  
Double Viscose Elastane Jersey



# ILIADE



Children: 6/8 - 8/10 - 10/12 - 12/14  
Ladies: XS - S - M - L

Four-way stretch warm-up jacket with front zip and dart seams, perfect for warmth between rehearsals. Pairs with Opus pants.  
Double Viscose Elastane Jersey







# Wear Moi

Designed in France

## MEN & BOYS

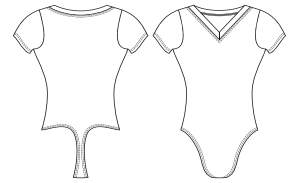




# CENTAUR



Children: 4/6 - 6/8 - 8/10 - 10/12 - 12/14  
Men: XS - S - M - L - XL



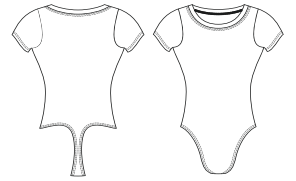
Short-sleeved men's leotard with a V-neck, no front cup, and a thong back for a seamless fit under tights. Made from elastane microfiber for maximum motion. Microfiber



# LUPIN



Children: 4/6 - 6/8 - 8/10 - 10/12 - 12/14  
Men: XS - S - M - L - XL



This short-sleeved men's leotard features a round neckline with slits and is made from elastane microfiber for maximum comfort. The thong back is imperceptible under tights, ensuring no visible lines. Microfiber



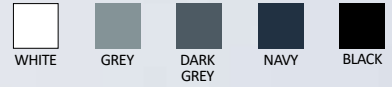
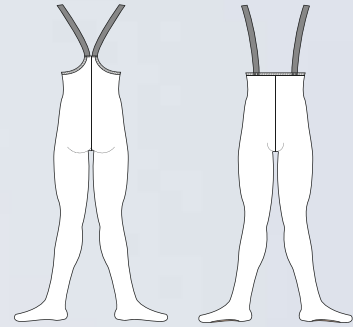




# WILSON

Men: XS - S - M - L - XL

Convertible tights with «Soft Touch» elastic straps and swimmer back. Features seamless foot transition and reinforced inseam gusset. Heavyweight Stretch Microfiber

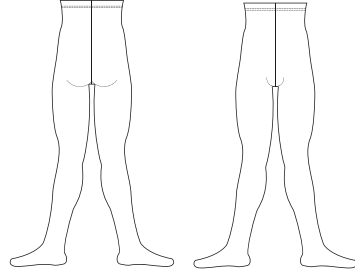




# SOLO

Children: 4/6 - 6/8 - 8/10 - 10/12  
Men: XS - S - M - L - XL

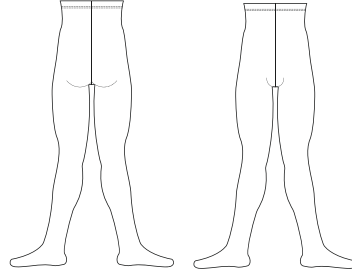
Heavyweight men footed tights with a ballet-style high waist.  
Cotton- Elastane



# ORION

Children: 4/6 - 6/8 - 8/10 - 10/12  
Men: XS - S - M - L - XL

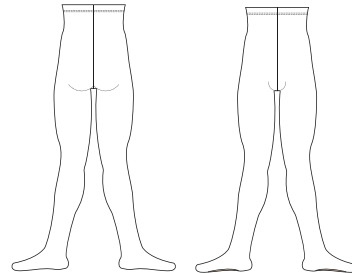
Heavy weight microfiber men's footed tights and a ballet waist.  
Heavyweight Stretch Microfiber



# HIDALGO

Children: 10/12  
Men: XS - S - M - L - XL

Heavyweight elastane convertible tights for men with a side opening for easy transition from footed to footless tights.  
Heavyweight Stretch Microfiber



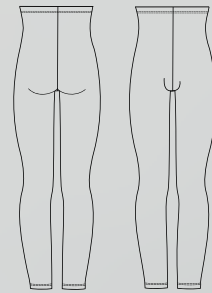


# ALBAN

Children: 4/6 - 6/8 - 8/10 - 10/12

Men: XS - S - M - L - XL

Men's heavyweight elastane footless tights with reinforced inseam gusset.  
Heavyweight Stretch Microfiber



WHITE



GREY



DARK  
GREY



NAVY



BLACK

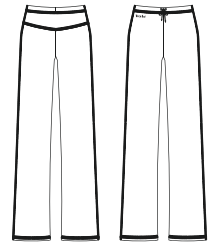


# PRESTON



Children: 6/8 - 8/10 - 10/12 - 12/14  
Men: XS - S - M - L

Men's warm-up pants with elastic waist band and drawstring. Wide leg for a more relaxed and comfortable fit.  
Double Viscose Elastane Jersey



NAVY



BLACK

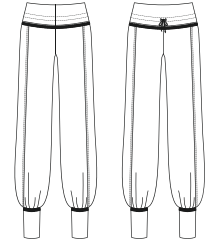


# BELEM



Children: 6/8 - 8/10 - 10/12 - 12/14  
Men: XS - S - M - L

Men's four-way stretch warm-up pants with fitted ankles and drawstring. Ideal for dancers and team uniforms. Pair with Malone jacket.  
Double Viscose Elastane Jersey



NAVY



BLACK



# MALONE



Children: 6/8 - 8/10 - 10/12 - 12/14  
Men: XS - S - M - L

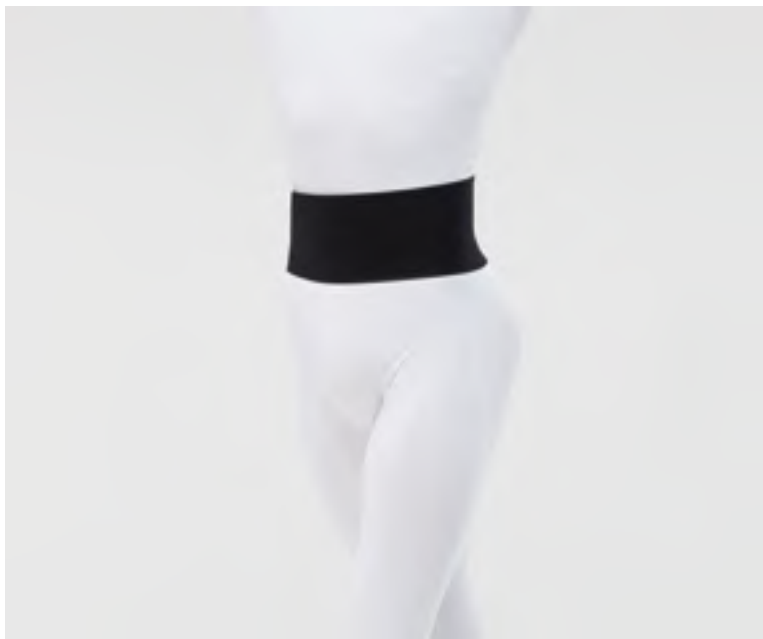
Men's four-way stretch warm-up jacket with a front zip and double dart seams. Ideal for staying warm or as a team uniform. Pairs well with Belem pants.  
Double Viscose Elastane Jersey



NAVY



BLACK



# ALCYONE

Men: XS - S - M - L

Men's wide elastic 12,50 cm waistband.  
Offering effortless support and a fitted silhouette.  
Elastic Elastane



DARK  
BEIGE



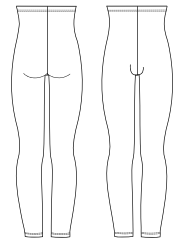
BLACK



# HAMADA

Children: 4/6 - 6/8 - 8/10 - 10/12  
Men: XS - S - M - L - XL

Heavyweight footless tights for men with a roll-down high waist or suspenders for class or performance.  
Cotton- Elastane



WHITE



GREY



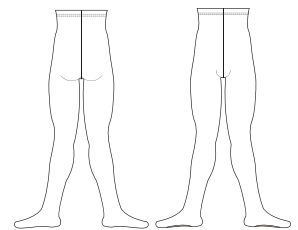
BLACK



# CLOVIS

Children: 4/6 - 6/8 - 8/10 - 10/12  
Men: XS - S - M - L

These men's convertible tights feature a comfortable opening under the arch, avoiding seams under the foot for optimal comfort.  
Cotton - Elastane



WHITE



GREY



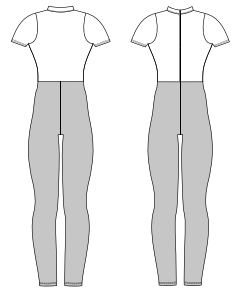
BLACK



# ELAN

Children: 6/8 - 8/10 - 10/12  
Men: XS - S - M - L - XL

Men's two-tone footless unitard.  
High neck with zipper front.  
Cotton - Elastane



WHITE /  
GREY



BLACK /  
NAVY

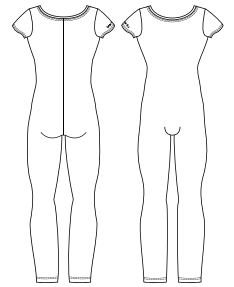


# ATLAS



Children: 8/10 - 10/12 - 12/14  
Men: XS - S - M - L - XL

Cap sleeved men's unitard with a  
wide neckline in front and back.  
Microfiber



NAVY

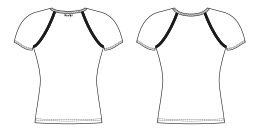


BLACK





# ALPIN



Children: 4/6 - 6/8 - 8/10 - 10/12 - 12/14  
Men: XS - S - M - L - XL

Raglan sleeves scoop neckline t-shirt,  
fits tight and close to the body.  
Microfiber



# CONRAD

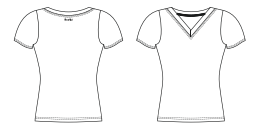


Children: 4/6 - 6/8 - 8/10 - 10/12 - 12/14  
Men: XS - S - M - L - XL

An ideal uniform staple, this  
crewneck cap sleeve men microfiber  
shirt is anything but basic.  
Microfiber



# HAXO



Children: 4/6 - 6/8 - 8/10 - 10/12 - 12/14  
Men: XS - S - M - L - XL

This soft microfiber, short sleeve,  
V-neck T-shirt is classic and  
exceptionally comfortable.  
Microfiber





# MERCURY

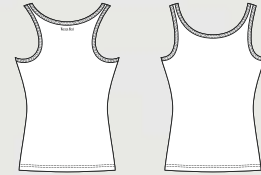


Children: 4/6 - 6/8 - 8/10 - 10/12 - 12/14

Men: XS - S - M - L - XL

This sleeveless tank top features a low-cut rounded neckline and wide back openings. The tapered fit ensures comfort and freedom of movement for dance classes.

Microfiber



WHITE



NAVY



BLACK



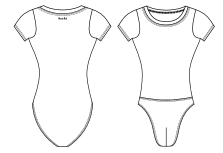


# IGOR



Children: 4/6 - 6/8 - 8/10 - 10/12 - 12/14  
Men: XS - S - M - L

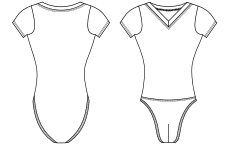
Wide neck men's leotard with cap sleeves. Full seat bottom without front padding. Microfiber



# ALTAN

Children: 4/6 - 6/8 - 8/10 - 10/12  
Men: XS - S - M - L

Men's full seat leotard. V-front cotton shirt, attached front padded full seat dance belt. Cotton - Elastane

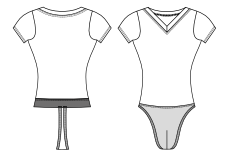


# HORACIO



Children: 6/8 - 8/10 - 10/12 - 12/14  
Men: XS - S - M - L - XL

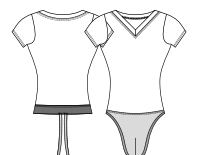
One of the most requested items, full microfiber shirt and attached microfiber dance belt combination. An ideal uniform piece for all ages, perfect for class and stage. Microfiber



# IVAN

Children: 6/8 - 8/10 - 10/12  
Men: XS - S - M - L - XL

Short sleeve V-neck cotton leotard features a built in fully front padded dance belt with thong back. An ideal uniform piece for all ages. Cotton - Elastane

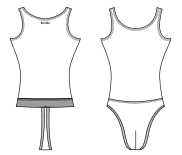




# VERSAO



Children: 6/8 - 8/10 - 10/12 - 12/14  
Men: XS - S - M - L



Microfiber basic men's full tank leotard with attached thong back dance belt.  
Microfiber



WHITE



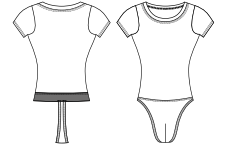
BLACK



# JASON



Children: 6/8 - 8/10 - 10/12 - 12/14  
Men: XS - S - M - L - XL



Short sleeve leotard with wide front and back scoop neck and built in dancebelt with thong back.  
Microfiber



WHITE



NAVY



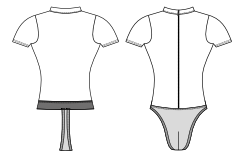
BLACK



# OBERON



Children: 6/8 - 8/10 - 10/12 - 12/14  
Men: XS - S - M - L - XL



Short sleeve leotard with zippered front mock turtleneck and built in dancebelt with thong back.  
Microfiber



WHITE



DARK GREY



BURGUNDY



NAVY

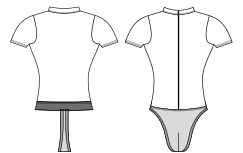


BLACK



# CONDOR

Children: 6/8 - 8/10 - 10/12  
Men: XS - S - M - L - XL



Short-sleeve mock turtleneck leotard with low zip front and padded dance belt with thong back.  
Ideal for ballroom and ballet.  
Cotton - Elastane



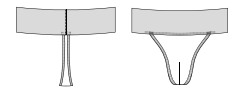
WHITE



BLACK



## DANCE BELT EXTRA WIDE



Men: XS - S - M - L - XL

Cotton elastane fully padded dance belt featuring a thong back and 12,5cm comfortable extra-wide elastic for added support.  
Cotton - Elastane



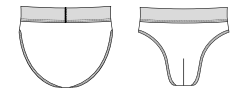
DARK  
BEIGE



BLACK



## DANCE BELT FULL SEAT



Children: 4/6 - 6/8 - 8/10 - 10/12 - 12/14  
Men: XS - S - M - L - XL

Boys/Men's full back dance belt. Features 4cm elastic waistband, contoured front shaped to the male anatomy and full front padding.  
Cotton - Elastane



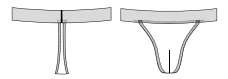
DARK  
BEIGE



WALNUT



## DANCE BELT NARROW



Children: 8/10 - 10/12 - 12/14  
Men: XS - S - M - L - XL

Cotton elastane fully padded dance belt features a thong back and 4cm soft touch elastic for comfort. Runs true to size.  
Cotton - Elastane



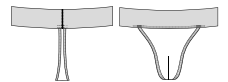
DARK  
BEIGE

WALNUT

BLACK



## DANCE BELT WIDE



Men: XS - S - M - L - XL

Cotton elastane fully padded dance belt features a thong back and 7,2cm soft touch elastic for comfort. Runs true to size.  
Cotton - Elastane



DARK  
BEIGE

WALNUT

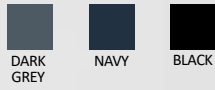
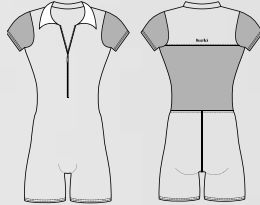
BLACK



# ROMEO

Men: XS - S - M - L

Men's unitard in microfiber with stretch mesh sleeves and back panel. Polo collar, front zip. Microfiber - Stretch Tulle



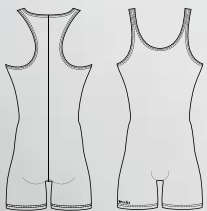
# TANGO

Children: 8/10 - 10/12

Men: XS - S - M - L

This men's microfiber, racerback, tank, biketard with men's leg cut features shorter leg length and is great fitting for men.

Microfiber

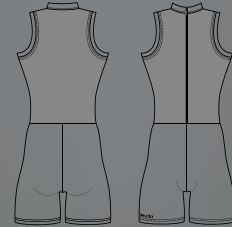


# CAPRI



Men: XS - S - M - L

Men's mock turtleneck, sleeveless biketard featuring a soft front zipper edging detail and a men's leg cut. Microfiber



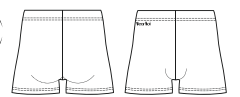
BLACK /  
NAVY







# MARCEAU



Children: 4/6 - 6/8 - 8/10 - 10/12  
Men: XS - S - M - L

Basic men's fitted dance short with four-way stretch.  
Microfiber

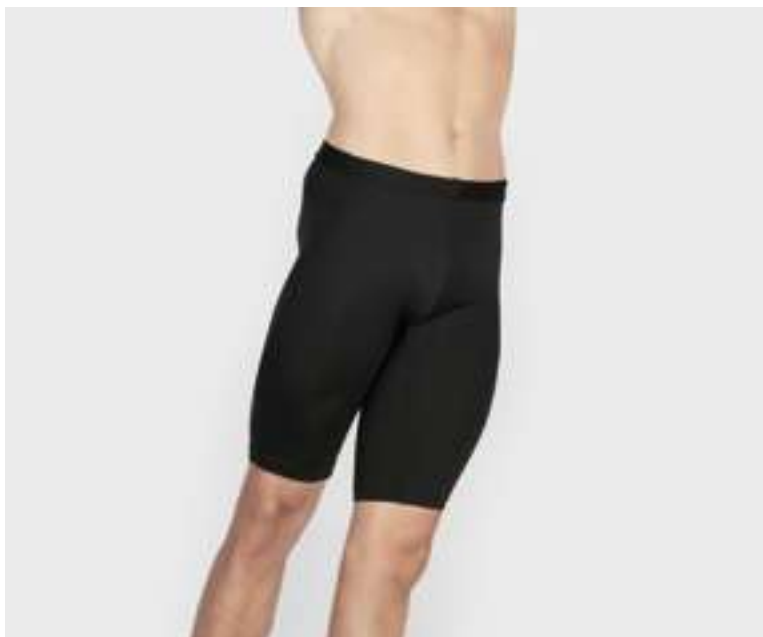


# PACO

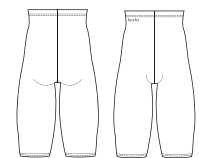


Children: 4/6 - 6/8 - 8/10 - 10/12  
Men: XS - S - M - L

Men's leg cut, cotton shorter length shorts that include a comfortable elastic waistband.  
Cotton - Elastane



# ODEON



Children: 4/6 - 6/8 - 8/10 - 10/12  
Men: XS - S - M - L

This men's microfiber over-the-knee dance pants is a perfect uniform option. Reinforced inseam gusset and secure waist elastic.  
Microfiber





Wear **Mei**  
Designed in France

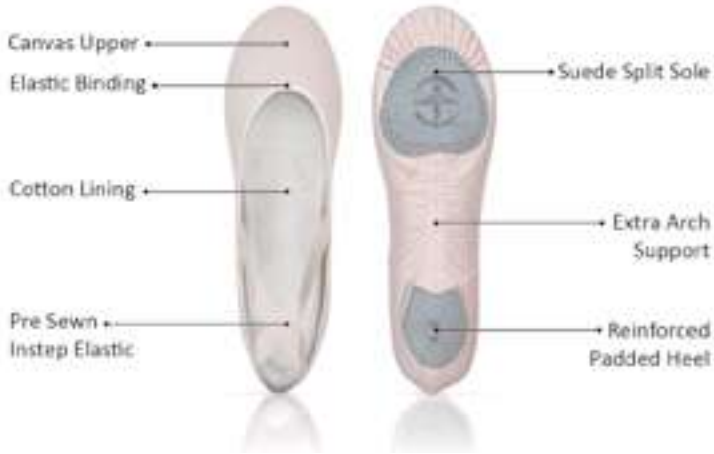
SHOES & TIGHTS

POINTE SHOES

«Made by dancers,  
for dancers»



PREMIUM STRETCH CANVAS



All sizes are unisex.

# VESTA

Split-sole stretch canvas ballet shoe. Full stretch canvas is handmade and machine stitched. No drawstring binding, which provides unsurpassed comfort and flexibility. This premium shoe also offers flat stitch pleats that prevent bunching and bulging under the toes and the sole of the foot. Lower vamp shows off the arch of the foot while the stretch canvas material will hug the dancer's foot and provide a sleek and professional look. Available in three widths. We suggest opting for two sizes larger than your regular fit. If you want more support, sticking to your usual size or going one size up would be ideal.

**NARROW: Size 26 to 46**

**MEDIUM: Size 24 to 50** - up to size 46 in LIGHT PINK

**WIDE: Size 33 to 50** - not available in LIGHT PINK

**No Half Size**





# PLUTON ♀

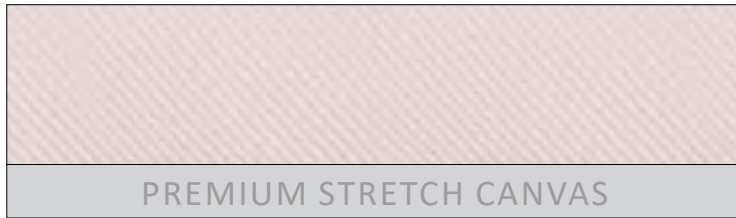
Split-sole premium "stretch" leather ballet shoe. Full glove leather is handmade and machine stitched. No drawstring binding, which provides unsurpassed comfort and flexibility. This premium shoe also offers flat stitch pleats that prevent bunching and bulging under the toes and the sole of the foot. Lower vamp shows off the arch of the foot while the premium glove leather material will hug the dancer's foot and provide a sleek and professional look. Available in three widths.

**NARROW:** Size 33 to 44  
**MEDIUM:** Size 28 to 50  
**WIDE:** Size 38 to 50  
**No Half Size**



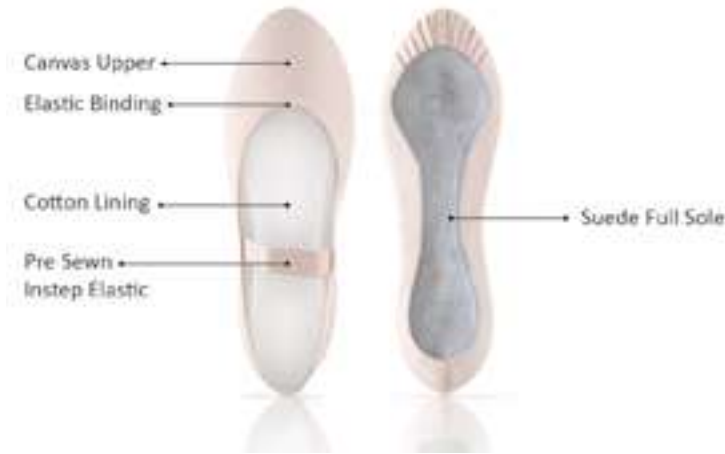
All sizes are unisex.





# JUNON \*

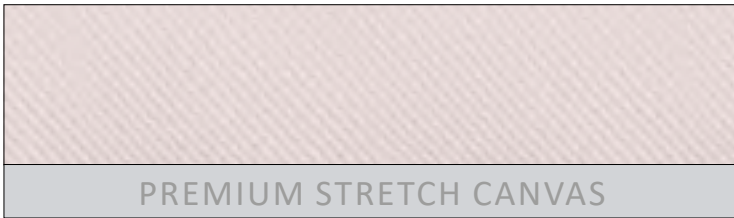
These full sole canvas ballet shoes come in both medium and narrow widths to accommodate growing feet. The full sole design will provide support for our beginner dancers as they learn how to point and arch. Durable canvas on top and sturdy leather sole at the bottom with soft interior lining for comfort.



All sizes are unisex.

**NARROW: Size 26 to 43**  
**MEDIUM: Size 23 to 43**  
**No Half Size**





# CERES ♀

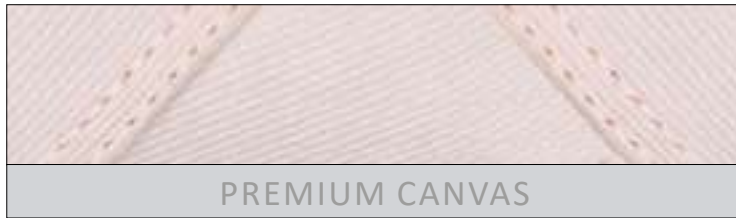
A perfect premium stretch canvas ballet shoe for beginners with the look and feel of our Vesta. Two widths are provided to accommodate growing feet. Split-sole ballet slipper with pre-sewn elastics.

**NARROW: Size 26 to 43**  
**MEDIUM: Size 23 to 43**  
**No Half Size**

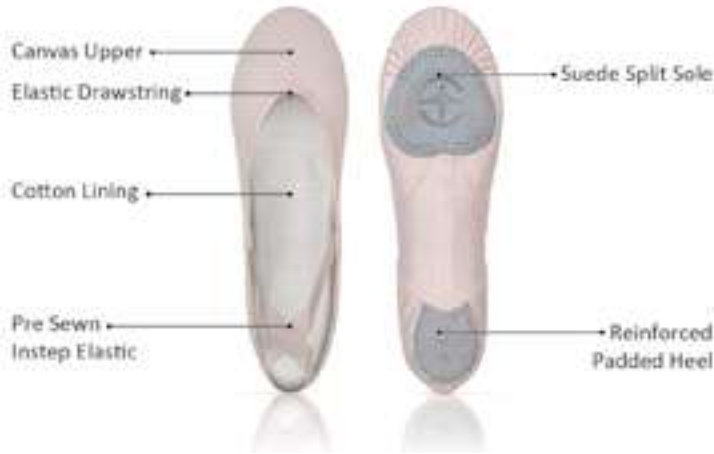


All sizes are unisex.





PREMIUM CANVAS



All sizes are unisex.

# NEPTUNE

This premium split-sole ballet shoe features high quality canvas and flexible lining for comfort. Flat stitch pleats prevent bunching and bulging under the toes and the sole of the foot. Lower vamp as well as arch stitching shows off the arch of the foot and the shape of the sole which creates a better profile under the foot. Available in two widths.

**NARROW: Size 30 to 44**

**MEDIUM: Size 26 to 50** - up to size 46 in LIGHT PINK

**No Half Size**





PREMIUM LEATHER

## SATURNE

Split-sole premium leather ballet shoe. Full glove leather is handmade and machine stitched. This premium shoe also features flat stitching of the pleats that prevents bunching and bulging under the toes and the sole of the foot. Lower vamp shows off the arch of the foot while the premium glove leather material will hug the dancer's foot and provide a sleek and professional look. Available in two widths.



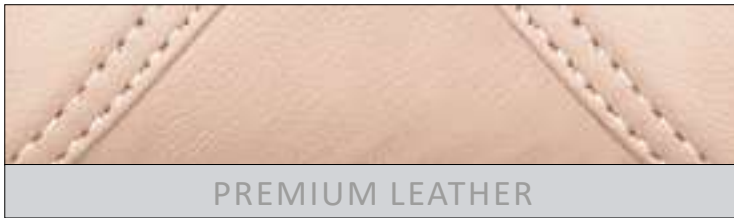
All sizes are unisex.

**NARROW: Size 36 to 44**

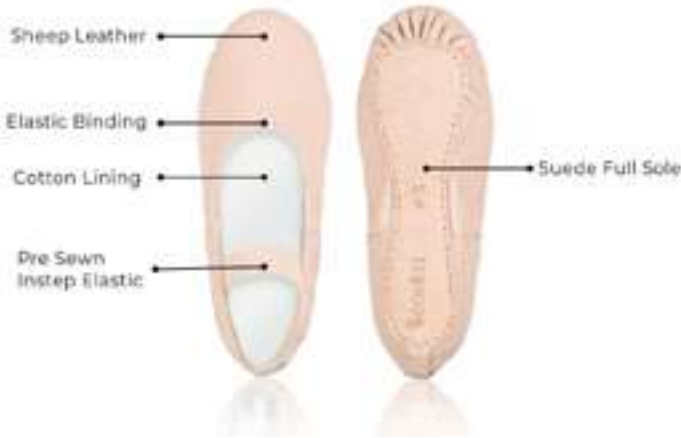
**MEDIUM: Size 30 to 46**

**No Half Size**





PREMIUM LEATHER



All sizes are unisex.

# ASTRA

Discover our ASTRA soft shoes, a perfect fusion of comfort and durability. Designed to enhance your dance experience, these leather soft shoes ensure unmatched quality. Their ergonomic inner sole is equipped with specially designed foam for optimal comfort. Their durable quality, combined with innovative features, makes them the perfect choice for dancers aiming to master the basics while enjoying comfortable practice. Treat yourself to elegance and performance, and dance with confidence.

**CHILD: Size 23 to 35**

**ADULT: Size 36 to 42**

**WIDTHS: N (NARROW) - M (MEDIUM) - W (WIDE)**

**No Half Size**



BALLET  
PINK





Collection Première

**ASTRA**

Affordable leather  
ballet slippers

# INSTINCT 2

Stretch leather "Turner Shoe" with a high quality elastic binding and two elastics for secure fit. This turner shoe will allow a dancer to practice and perform their best without worrying about their toes separating.

The soft leather properly follows the dancer's foot. Half-sole design with covered toes. Suede sole with pleats. Premium elastic sewn in two directions for secure fit and wear. Ideal for dancers that want a closed toe shoe without the heel constriction.

## Leather

Size: XS - S - M - L - XL



SAUMON

# IMPULSE 2

Stretch canvas "Turner Shoe" with a high quality elastic binding and two elastics for secure fit. This turner shoe will allow a dancer to practice and perform their best without worrying about their toes separating.

Stretch canvas properly follows the dancer's foot. Half-sole design with covered toes. Suede sole with pleats. Premium elastic sewn in two directions for secure fit and wear. Ideal for dancers that want a closed toe shoe without the heel constriction.

## Stretch canvas

Size: XS - S - M - L - XL



DARK PINK



TAN



WALNUT

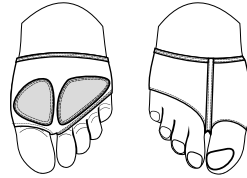


# PEGASUS

Innovative, perforated microfiber material providing an invisible look in class and on stage. This breathable modern-style shoe will allow a dancer to have support, padding on the ball of the foot as well as connection to the floor with an open-toe design. It separates the toe from rest of foot and provides a snug, glove-like fit with its premium elastic binding.

**Perforated microfiber**

**Size: XS - S - M - L - XL - XXL**



# DEMI-POINTE

The Demi-Pointe is a wonderful way for a dancer **to transition** from a Vesta or Pluton ballet slipper to one of Wear Moi's popular pointe shoe styles.

This satin shoe is handmade in the **turned construction method** and features evenly spaced pleats on the bottom/front of the shoe.

The Demi-Pointe contains a leather sole and a **lightweight box toe**, like traditional pointe shoes. The most important thing to remember about a Demi-Pointe is that **it does not contain a shank** - the most vital part of a pointe shoe to stand "en pointe". The most effective use of a Demi-Pointe is when it is part of the syllabus required by a school or conservatory, where a teacher can use this tool in the training process towards pointe work. Typically, teachers will recommend ballet slippers at the barre and a Demi-Pointe for center work one year before the student advances to "full" pointe. This allows the foot to **become conditioned to the feel of a pointe shoe**.

In addition, a Demi-Pointe develops and strengthens muscles in preparation for full pointe work. Also, the young dancer becomes familiar with tying their ribbons. The Demi-Pointe is available with pre-stitched, high-quality **satin or cotton ribbons** free of charge.

Demi-Pointe's sizing follows the **UK sizing system**.

# DEMI-POINTE

Satin demi-pointe shoes. Special box for beginners with a U cut throat and no shank. Excellent pre-pointe shoe to develop and strengthen the muscles in preparation for full pointe work. Should never be used to go "en pointe". Elastic drawstring.



SAUMON

SIZE	WIDTH	FREE RIBBONS
2 to 7	medium X wide XX extra wide XXX x extra wide XXXX	available with pre-stitched satin or cotton



## DEMI-POINTE MORE OPTIONS

### SIZE

If your size does not match our core sizing, you have more size options to order, ranging from 13 to 9.

	MORE OPTIONS			STOCK ITEMS											MORE OPTIONS			
SIZE UK	13	1	1.5	2	2.5	3	3.5	4	4.5	5	5.5	6	6.5	7	7.5	8	8.5	9
SIZE EUR	32	33	33.5	34	35	35.5	36	36.5	37	38	39	39.5	40	41	41.5	42	42.5	43
SIZE JAPAN	19.8	20.4	20.8	21.1	21.8	22.1	22.4	22.8	23.1	24.2	24.9	25.5	25.8	26.4	26.8	27.2	27.5	27.8
SIZE US	1	3.5	4	4.5	5	5.5	6	6.5	7	7.5	8	8.5	9	9.5	10	10.5	11	11.5

# By ARIAL Wear Mei

Boasting a universal fit, the shoe is pre-arched and features clean lines, a low crown, and a U-shaped throat. The sole's new design enhances grip for better floor adhesion.

ARIAL stands out for its unmatched comfort, thanks to the ultra-soft, moisture-wicking inner lining with a peach-skin effect. Inside, a reinforced platform and soft tip pad provide additional cushioning, while high wings support the metatarsals.

ARIAL's flexible shanks allow smoother transitions through demi-pointe, providing stability while feeling light and agile. Its lightweight design allows it to fit most feet effortlessly, requiring minimal adjustments from the dancer.

Arial is available with pre-stitched, high-quality satin or cotton ribbons free of charge.

Arial's sizing follows the **UK sizing system**.

*Elastic drawstring encased in a cotton binding*



ARIAL  
Comfort Meets Performance

# ARIAL

## EXTRA SOFT

Arial Extra Soft shank provides minimal support to the arch and is ideal for dancers transitioning from a demi-pointe shoe to their first pair of pointe shoes. Additionally, this shank is suited for dancers with tight ligaments or an underdeveloped arch.



SAUMON

SIZE	WIDTH	FREE RIBBONS
1 to 8	narrow N medium X wide XX extra wide XXX x extra wide XXXX	satin or cotton

	→	HIGH WINGS
	→	EXTRA SOFT
	→	FULL SHANK

**LOW PROFILE BOX**

	TEXON LEATHER
--	------------------

**BINDING: ELASTIC DRAWSTRING**

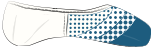


# ARIAL SOFT

Arial Soft shank provides light support to the arch and is ideal for dancers with tight ligaments or an underdeveloped arch. In most cases, a "beginner" who is starting pointe work will be best served with a soft shank. The minimal support provided by a soft shank will allow the dancer to stretch their ligaments to enable the dancer to stand fully "on top" of their platform. In other cases, a "seasoned" dancer with very tight ligaments may continue to wear a soft shank.







 SAUMON

SIZE	WIDTH	FREE RIBBONS
1 to 8	narrow N medium X wide XX extra wide XXX x extra wide XXXX	satin or cotton

	→	HIGH WINGS
	→	SOFT
	→	FULL SHANK

**LOW PROFILE BOX**

		TEXON
		TEXON
		LEATHER

**BINDING: ELASTIC DRAWSTRING**

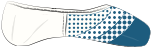


# ARIAL MEDIUM

Arial Medium shank provides ample support to the arch for most dancers. For dancers with pliable ligaments, a medium shank allows them to stand "on top" of their platform with great ease. The three-quarter cut shank provides the utmost contact to the arch for maximum support while "en pointe". The specially designed shank provides the utmost contact to the arch for maximum support.







SAUMON

SIZE	WIDTH	FREE RIBBONS
1 to 8	narrow N medium X wide XX extra wide XXX x extra wide XXXX	satin or cotton

	→	HIGH WINGS
	→	MEDIUM
	→	3/4 SHANK

**LOW PROFILE BOX**

		TEXON
		CARDBOARD FIBER 2.0
		LEATHER

**BINDING: ELASTIC DRAWSTRING**

# ARIAL HARD

Arial Hard shank supports a malleable arch with stretched ligaments. For the best support for this type of arch, a hard shank will provide the most significant support. In addition, the shank must conform to the foot's arch. The three-quarter cut shank provides the utmost contact to the arch for maximum support while "en pointe". The specially designed shank provides the utmost contact to the arch for maximum support.







 SAUMON

SIZE	WIDTH	FREE RIBBONS
1 to 8	narrow N medium X wide XX extra wide XXX x extra wide XXXX	satin or cotton

	→	HIGH WINGS
	→	HARD
	→	3/4 SHANK

**LOW PROFILE BOX**

		TEXON
		CARDBOARD FIBER 2.5
		LEATHER

**BINDING: ELASTIC DRAWSTRING**



Sleek and elegant, the Alfa pointe shoe is ideal for the **moderate-shaped Greek or Roman foot**, where the second toe predominates or two toes of equal length. Handmade in the classic **turned construction** method (made inside out) by craftsmen trained in age-old European shoemaking traditions. Dancers embrace Alfa worldwide. Its clean lines contribute to a **moderate crown height with lowered side and heel measurements**.

An open **U-shaped throat** provides freedom in the vamp area. The throat of the pointe shoe features an **elastic drawstring encased in a cotton binding**. Its **reinforced platform ensures extended wear**, while a silicone gel tip pad applied to the inside of the shoe's platform offers additional comfort.

**High wings** provide lateral support to the metatarsals. A polyurethane (microfiber) insole and back-quarter panels prevent "sliding" in the shoe and wicks away moisture.

An **embossed leather outsole** marked with a decorative design, including the size, width, and shank strength, provides traction.

Alfa is available with pre-stitched, high-quality **satin or cotton ribbons** free of charge.

Alfa's sizing follows the **UK sizing system**.

*Elastic drawstring encased in a cotton binding*



*Greek-Square*

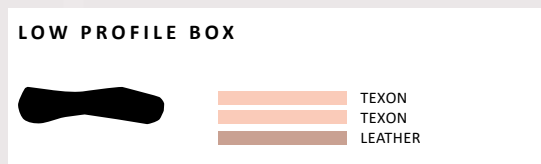
*Roman*

# ALFA SOFT

Alfa Soft shank provides light support to the arch and is ideal for dancers with tight ligaments or an underdeveloped arch. In most cases, a "beginner" who is starting pointe work will be best served with a soft shank. The minimal support provided by a soft shank will allow the dancer to stretch their ligaments to enable the dancer to stand fully "on top" of their platform. In other cases, a "seasoned" dancer with very tight ligaments may continue to wear a soft shank.



SIZE	WIDTH	FREE RIBBONS
3 to 8	medium X wide XX extra wide XXX x extra wide XXXX	satin or cotton



**BINDIN : ELASTIC DRAWSTRING**

## ALFA POINTE MORE OPTIONS

The Salmon, Walnut and Carmel colors will match your skin tone. The White and Black colors will be more adapted to the needs of your dance performances.



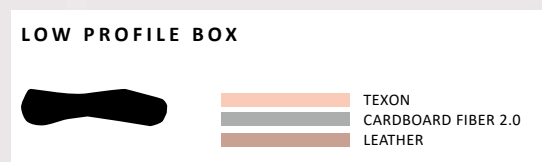
# ALFA MEDIUM

Alfa Medium shank provides ample support to the arch for most dancers. For dancers with pliable ligaments, a medium shank allows them to stand "on top" of their platform with great ease.



SAUMON

SIZE	WIDTH	FREE RIBBONS
3 to 8	medium wide extra wide x extra wide	X XX XXX XXXX
		satin or cotton



**BINDING: ELASTIC DRAWSTRING**



If your size does not match our core sizing, you have more size options to order.

	MORE OPTIONS				STOCK ITEMS										
SIZE UK	1	1.5	2	2.5	3	3.5	4	4.5	5	5.5	6	6.5	7	7.5	8
SIZE EUR	33	33.5	34	35	35.5	36	36.5	37	38	39	39.5	40	41	41.5	42
SIZE JAPAN	20.4	20.8	21.1	21.8	22.1	22.4	22.8	23.1	24.2	24.9	25.5	25.8	26.4	26.8	27.2
SIZE US	3.5	4	4.5	5	5.5	6	6.5	7	7.5	8	8.5	9	9.5	10	10.5

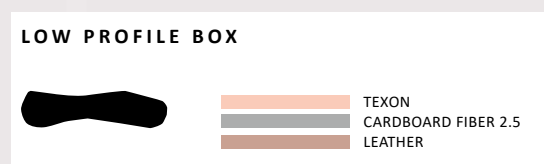
# ALFA HARD

Alfa Hard shank supports a malleable arch with stretched ligaments. For the best support for this type of arch, a hard shank will provide the most significant support. In addition, the shank must conform to the foot's arch. The three-quarter cut shank provides the utmost contact to the arch for maximum support while "en pointe."



SAUMON

SIZE	WIDTH	FREE RIBBONS								
1 to 8	<table border="0"> <tr> <td>medium</td> <td>X</td> </tr> <tr> <td>wide</td> <td>XX</td> </tr> <tr> <td>extra wide</td> <td>XXX</td> </tr> <tr> <td>x extra wide</td> <td>XXXX</td> </tr> </table>	medium	X	wide	XX	extra wide	XXX	x extra wide	XXXX	satin or cotton
medium	X									
wide	XX									
extra wide	XXX									
x extra wide	XXXX									



**BINDING: ELASTIC DRAWSTRING**



## ALFA POINTE MORE OPTIONS

The Salmon, Walnut and Carmel colors will match your skin tone. The White and Black colors will be more adapted to the needs of your dance performances.



# ALFA

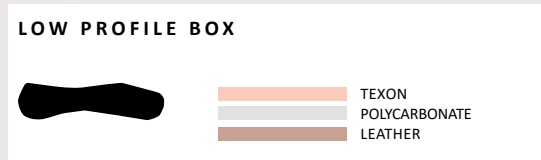
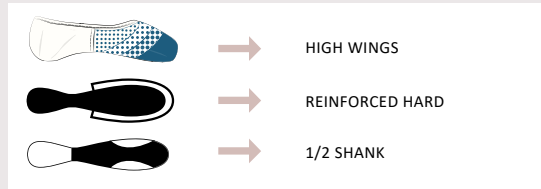
## REINFORCED HARD

Alfa Reinforced Hard shank supports a highly flexible foot with stretched ligaments—either through the development of the arch or born with loose ligaments. A reinforced hard shank will provide the ultimate support to the arch. A half shank is best suited for this type of arch to ensure that the shank will conform entirely to the arch.



SAUMON

SIZE	WIDTH	FREE RIBBONS
3 to 8	medium X wide XX extra wide XXX x extra wide XXXX	satin or cotton



**BINDING: ELASTIC DRAWSTRING**

If your size does not match our core sizing, you have more size options to order.

	MORE OPTIONS				STOCK ITEMS											
SIZE UK	1	1.5	2	2.5	3	3.5	4	4.5	5	5.5	6	6.5	7	7.5	8	
SIZE EUR	33	33.5	34	35	35.5	36	36.5	37	38	39	39.5	40	41	41.5	42	
SIZE JAPAN	20.4	20.8	21.1	21.8	22.1	22.4	22.8	23.1	24.2	24.9	25.5	25.8	26.4	26.8	27.2	
SIZE US	3.5	4	4.5	5	5.5	6	6.5	7	7.5	8	8.5	9	9.5	10	10.5	



Like Alfa, the Omega pointe shoe is ideal for the **moderate-shaped Greek or Roman foot**, where the second toe predominates or two toes of equal length, as both pointe shoes share the same last. Omega, manufactured in the **turn construction** method (made inside out) with external pleats, is English shoemaking traditionalism at its best. Noted for its clean appearance when placed on the foot, Omega's **elasticized binding** enhances the dancers' leg line to become a natural foot extension.

Additionally, a **moderate crown height** adds to Omega's eloquent line. A **reduction of the side and heel measurement** and an open **U shape throat** display the dancers' arch to its maximum potential. Its **reinforced platform ensures extended wear**, while a silicone gel tip pad applied to the inside of the shoe's platform offers additional comfort. Lateral support at the metatarsals is due to Omega's **supportive wings**. A polyurethane (microfiber) insole and back-quarter panels prevent "sliding" in the shoe and wicks away moisture.

An **embossed leather outsole** marked with a decorative design, including the size, width, and shank strength, provides traction.

Omega is available with pre-stitched, high-quality **satin or cotton ribbons** free of charge.

Omega's sizing follows the **UK sizing system**.

*Elasticized binding without drawstring*



*Greek-Square*

*Roman*

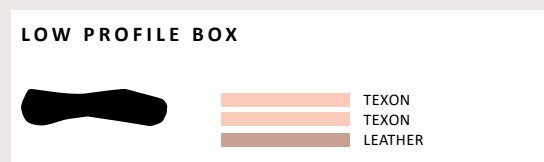
# OMEGA SOFT

Omega Soft shank provides light support to the arch and is ideal for dancers with tight ligaments or an underdeveloped arch. In most cases, a "beginner" who is starting pointe work will be best served with a soft shank. The minimal support provided by a soft shank will allow the dancer to stretch their ligaments to enable the dancer to stand fully "on top" of their platform. In other cases, a "seasoned" dancer with very tight ligaments may continue to wear a soft shank.



SAUMON

SIZE	WIDTH	FREE RIBBONS
3 to 8	medium X wide XX extra wide XXX x extra wide XXXX	satin or cotton



**BINDING: ELASTIC BINDING**

## OMEGA POINTE MORE OPTIONS

The Salmon, Walnut and Carmel colors will match your skin tone. The White and Black colors will be more adapted to the needs of your dance performances.



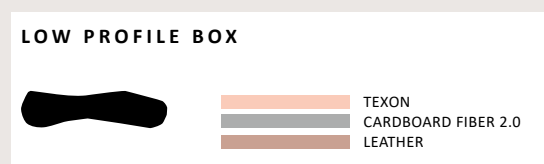
# OMEGA

## MEDIUM 3/4

Omega Medium 3/4 shank provides ample support to the arch for most dancers. For dancers with pliable ligaments, a medium shank allows them to stand "on top" of their platform with great ease. A three-quarter cut shank provides the utmost contact to the arch for maximum support while "en pointe".



SIZE	WIDTH	FREE RIBBONS
3 to 8	medium X wide XX extra wide XXX x extra wide XXXX	satin or cotton



**BINDING: ELASTIC BINDING**

If your size does not match our core sizing, you have more size options to order.

	MORE OPTIONS				STOCK ITEMS										
SIZE UK	1	1.5	2	2.5	3	3.5	4	4.5	5	5.5	6	6.5	7	7.5	8
SIZE EUR	33	33.5	34	35	35.5	36	36.5	37	38	39	39.5	40	41	41.5	42
SIZE JAPAN	20.4	20.8	21.1	21.8	22.1	22.4	22.8	23.1	24.2	24.9	25.5	25.8	26.4	26.8	27.2
SIZE US	3.5	4	4.5	5	5.5	6	6.5	7	7.5	8	8.5	9	9.5	10	10.5

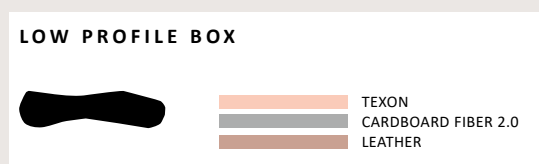
# OMEGA MEDIUM

Omega Medium shank provides ample support to the arch for most dancers. For dancers with pliable ligaments, a medium shank allows them to stand "on top" of their platform with great ease.



SAUMON

SIZE	WIDTH	FREE RIBBONS
3 to 8	medium X wide XX extra wide XXX x extra wide XXXX	satin or cotton



**BINDING: ELASTIC BINDING**

## OMEGA POINTE MORE OPTIONS

The Salmon, Walnut and Carmel colors will match your skin tone. The White and Black colors will be more adapted to the needs of your dance performances.

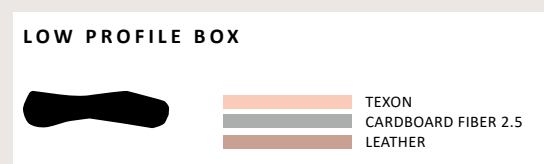


# OMEGA HARD

Omega Hard shank supports a malleable arch with stretched ligaments. For the best support for this type of arch, a hard shank will provide the most significant support. In addition, the shank must conform to the foot's arch. The three-quarter cut shank provides the utmost contact to the arch for maximum support while "en pointe".



SIZE	WIDTH	FREE RIBBONS
3 to 8	medium wide X extra wide XX x extra wide XXX XXXX	satin or cotton



**BINDING: ELASTIC BINDING**

If your size does not match our core sizing, you have more size options to order.

	MORE OPTIONS				STOCK ITEMS										
SIZE UK	1	1.5	2	2.5	3	3.5	4	4.5	5	5.5	6	6.5	7	7.5	8
SIZE EUR	33	33.5	34	35	35.5	36	36.5	37	38	39	39.5	40	41	41.5	42
SIZE JAPAN	20.4	20.8	21.1	21.8	22.1	22.4	22.8	23.1	24.2	24.9	25.5	25.8	26.4	26.8	27.2
SIZE US	3.5	4	4.5	5	5.5	6	6.5	7	7.5	8	8.5	9	9.5	10	10.5

# OMEGA

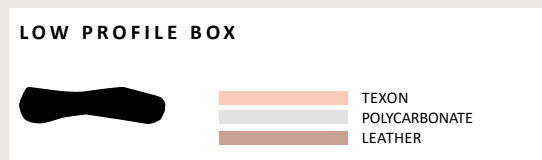
## REINFORCED HARD

Omega Reinforced Hard shank supports a highly flexible foot with stretched ligaments—either through the development of the arch or born with loose ligaments. A reinforced hard shank will provide the ultimate support to the arch. A half shank is best suited for this type of arch to ensure that the shank will conform entirely to the arch.



SAUMON

SIZE	WIDTH	FREE RIBBONS
3 to 8	medium wide extra wide x extra wide	X XX XXX XXXX
		satin or cotton



**BINDING: ELASTIC BINDING**

## OMEGA POINTE MORE OPTIONS

The Salmon, Walnut and Carmel colors will match your skin tone. The White and Black colors will be more adapted to the needs of your dance performances.



If your size does not match our core sizing, you have more size options to order.

	MORE OPTIONS				STOCK ITEMS										
SIZE UK	1	1.5	2	2.5	3	3.5	4	4.5	5	5.5	6	6.5	7	7.5	8
SIZE EUR	33	33.5	34	35	35.5	36	36.5	37	38	39	39.5	40	41	41.5	42
SIZE JAPAN	20.4	20.8	21.1	21.8	22.1	22.4	22.8	23.1	24.2	24.9	25.5	25.8	26.4	26.8	27.2
SIZE US	3.5	4	4.5	5	5.5	6	6.5	7	7.5	8	8.5	9	9.5	10	10.5





# *La Pointe*

By Wear Moi



# La Pointe

## LA POINTE SQUARE

Wear Moi

The **Roman and Greek Square foot** is an ideal foot shape for pointe work, as the first three toes are of equal length and have the most contact with the internal platform of the pointe shoe. Additionally, the external platform of the La Pointe Square offers the broadest platform of all Wear Moi pointe shoes. A broad platform provides the **greatest feeling of security** while "en pointe".

The cut of a **U shape throat** mimics the lines of the square box and is often the choice of dancers worldwide. It contains a cotton drawstring encased in a cotton binding.

The construction of La Pointe Square is in the **turned method** and offers pleats on the bottom front of the shoe and contains a standard crown height with traditional side and heel measurements. A reinforced platform **extends the longevity of this pointe shoe.**

An **embossed leather outsole** marked with a decorative design, including the size, width, and shank strength, provides traction.

La Pointe Square is available with pre-stitched, high-quality **satin or cotton ribbons** free of charge.

La Pointe's Square sizing follows the **UK sizing system.**



*Greek-Square*



*Roman*


# LA POINTE SQUARE EXTRA SOFT



The La Pointe Square Extra Soft shank provides minimal support to the arch and is ideal for dancers transitioning from a demi-pointe shoe to their first pair of pointe shoes. Additionally, this shank is suited for dancers with tight ligaments or an underdeveloped arch.



  
SAUMON

SIZE	WIDTH	FREE RIBBONS
3 to 7	medium X wide XX extra wide XXX x extra wide XXXX	satin or cotton

	→	STANDARD WINGS
	→	EXTRA SOFT
	→	FULL SHANK

BOX SQUARE	
	 TEXON  LEATHER

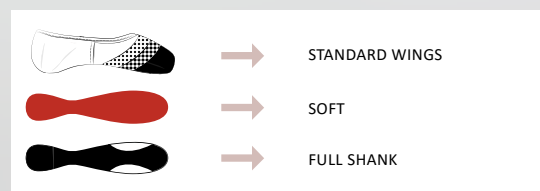
# LA POINTE SQUARE SOFT

The La Pointe Square Soft shank provides light support to the arch and is ideal for dancers with tight ligaments or an underdeveloped arch. In most cases, a "beginner" who is starting pointe work will be best served with a soft shank. The minimal support provided by a soft shank will allow the dancer to stretch their ligaments to enable the dancer to stand fully "on top" of their platform. In other cases, a "seasoned" dancer with very tight ligaments may continue to wear a soft shank.



 SAUMON

SIZE	WIDTH	FREE RIBBONS
3 to 7	medium X wide XX extra wide XXX x extra wide XXXX	satin or cotton



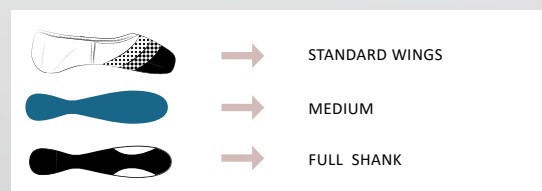
# LA POINTE SQUARE MEDIUM

The La Pointe Square Medium shank provides ample support to the arch for most dancers. For dancers with pliable ligaments, a medium shank allows them to stand "on top" of their platform with great ease.



  
SAUMON

SIZE	WIDTH	FREE RIBBONS
3 to 7	medium X wide XX extra wide XXX x extra wide XXXX	satin or cotton



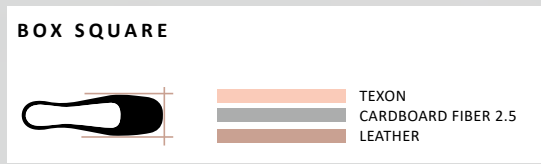
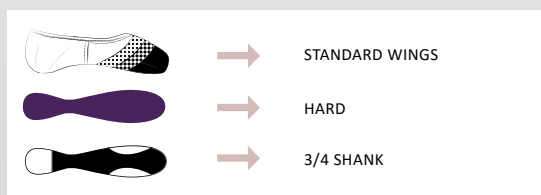
# LA POINTE SQUARE HARD

The La Pointe Square Hard shank supports a malleable arch with stretched ligaments. For the best support for this type of arch, a hard shank will provide the most significant support. In addition, the shank must conform to the foot's arch. The three-quarter cut shank provides the utmost contact to the arch for maximum support while "en pointe".



 SAUMON

SIZE	WIDTH	FREE RIBBONS
3 to 7	medium X wide XX extra wide XXX x extra wide XXXX	satin or cotton



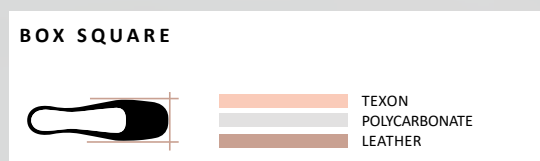
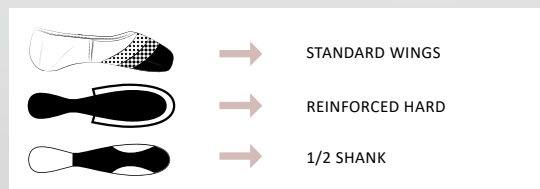
# LA POINTE SQUARE REINFORCED HARD

The La Pointe Square Reinforced Hard shank supports a highly flexible foot with stretched ligaments- either through the development of the arch or born with loose ligaments. A reinforced hard shank will provide the ultimate support to the arch. A half shank is best suited for this type of arch to ensure that the shank will conform entirely to the arch.



SAUMON

SIZE	WIDTH	FREE RIBBONS
3 to 7	medium X wide XX extra wide XXX x extra wide XXXX	satin or cotton



# MORE OPTIONS

If your ideal combination is not displayed in stock on the previous pages, we have other options on demand. Here's all the pre-defined combinations that you can choose from for the La Pointe Square and the La Pointe Taper models.

## 01 COLOR

The Salmon, Walnut and Carmel colors will match your skin tone. The White and Black colors will be more adapted to the needs of your dance performances.



## 02

### SIZE

If your size does not match our core sizing, you have more size options to order, ranging from 13 to 9.

	MORE OPTIONS					STOCK ITEMS										MORE OPTIONS			
SIZE UK	13	1	1.5	2	2.5	3	3.5	4	4.5	5	5.5	6	6.5	7	7.5	8	8.5	9	
SIZE EUR	32	33	33.5	34	35	35.5	36	36.5	37	38	39	39.5	40	41	41.5	42	42.5	43	
SIZE JAPAN	19.8	20.4	20.8	21.1	21.8	22.1	22.4	22.8	23.1	24.2	24.9	25.5	25.8	26.4	26.8	27.2	27.5	27.8	
SIZE US	1	3.5	4	4.5	5	5.5	6	6.5	7	7.5	8	8.5	9	9.5	10	10.5	11	11.5	

## 03

### VAMPS



Our La Pointe models have a traditional U-cut vamp. If you prefer to opt for a different line where your foot will be less exposed, you can choose the V-cut option on demand.

## 04

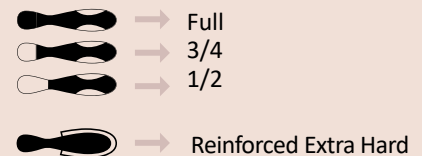
### WIDTH

narrow (N)  
medium (X)  
wide (XX)  
extra wide (XXX)  
x extra wide (XXXX)  
xx extra wide (XXXXX)

We offer two additional widths on demand: narrow (N) and xx extra wide (XXXXX)

## 05

### LENGTH & SHANK



Shank and length can be adapted according to your needs.

Extra Soft shank only available in full length

RH and RXH shanks only available in 1/2 length

# La Pointe

## LA POINTE TAPER

Wear Me!

The La Pointe Taper is ideally suited for the **Egyptian or Greek-Taper foot**, where the first toe (big toe) predominates, and all other phalanges reduce in length, with the fifth toe (little toe) being the shortest. The last of La Pointe Taper provides a tapered fit on the inside of the shoe for **maximum support**.

The **U throat shape** contain a cotton drawstring encased in a cotton binding.

The construction of La Pointe Taper is in the **turned method** and offers pleats on the bottom front of the shoe and contains a standard crown height with traditional side and heel measurements. The platform's durability is extended by a **reinforcement lining** placed within the box during construction.

An **embossed leather outsole** marked with a decorative design, including the size, width, and shank strength, provides traction.

La Pointe Taper is available with pre-stitched, high-quality **satin or cotton ribbons** free of charge.

La Pointe's Taper sizing follows the **UK sizing system**.



*Greek-Taper*



*Egyptian*

# LA POINTE TAPER EXTRA SOFT

The La Pointe Taper Extra Soft shank provides minimal support to the arch and is ideal for dancers transitioning from a demi-pointe shoe to their first pair of pointe shoes. Additionally, this shank is suited for dancers with tight ligaments or an underdeveloped arch.



  
SAUMON

SIZE	WIDTH	FREE RIBBONS
3 to 7	medium X wide XX extra wide XXX x extra wide XXXX	satin or cotton



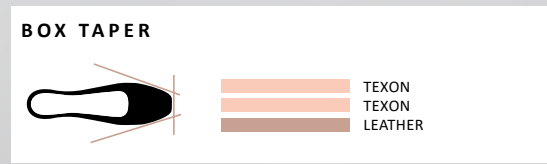
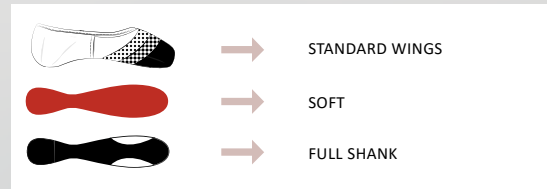
# LA POINTE TAPER SOFT

The La Pointe Taper Soft shank provides light support to the arch and is ideal for dancers with tight ligaments or an underdeveloped arch. In most cases, a "beginner" who is starting pointe work will be best served with a soft shank. The minimal support provided by a soft shank will allow the dancer to stretch their ligaments to enable the dancer to stand fully "on top" of their platform. In other cases, a "seasoned" dancer with very tight ligaments may continue to wear a soft shank.



 SAUMON

SIZE	WIDTH	FREE RIBBONS
3 to 7	medium X wide XX extra wide XXX x extra wide XXXX	satin or cotton



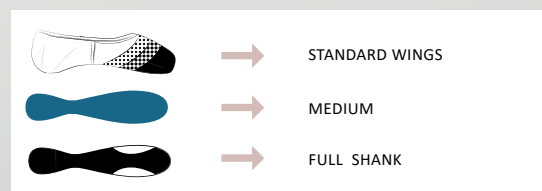
# LA POINTE TAPER MEDIUM

The La Pointe Taper Medium shank provides ample support to the arch for most dancers. For dancers with pliable ligaments, a medium shank allows them to stand "on top" of their platform with great ease.



  
SAUMON

SIZE	WIDTH	FREE RIBBONS
3 to 7	medium X wide XX extra wide XXX x extra wide XXXX	satin or cotton



# LA POINTE TAPER HARD

The La Pointe Taper Hard shank supports a malleable arch with stretched ligaments. For the best support for this type of arch, a hard shank will provide the most significant support. In addition, the shank must conform to the foot's arch. The three-quarter cut shank provides the utmost contact to the arch for maximum support while "en pointe".



 SAUMON

SIZE	WIDTH	FREE RIBBONS
3 to 7	medium X wide XX extra wide XXX x extra wide XXXX	satin or cotton

	→	STANDARD WINGS
	→	HARD
	→	3/4 SHANK

BOX TAPER	
	 TEXON CARDBOARD FIBER 2.5 LEATHER

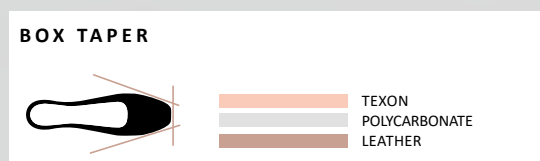
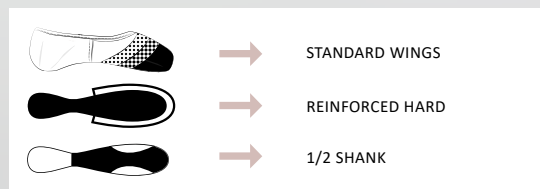
# LA POINTE TAPER REINFORCED HARD

The La Pointe Taper Reinforced Hard shank supports a highly flexible foot with stretched ligaments- either through the development of the arch or born with loose ligaments. A reinforced hard shank will provide the ultimate support to the arch. A half shank is best suited for this type of arch to ensure that the shank will conform entirely to the arch.



 SAUMON

SIZE	WIDTH	FREE RIBBONS
3 to 7	medium X wide XX extra wide XXX x extra wide XXXX	satin or cotton



# MORE OPTIONS

If your ideal combination is not displayed in stock on the previous pages, we have other options on demand. Here's all the pre-defined combinations that you can choose from for the La Pointe Square and the La Pointe Taper models.

## 01

### COLOR

The Salmon, Walnut and Carmel colors will match your skin tone. The White and Black colors will be more adapted to the needs of your dance performances.



## 02

### SIZE

If your size does not match our core sizing, you have more size options to order, ranging from 13 to 9.

	MORE OPTIONS					STOCK ITEMS										MORE OPTIONS			
SIZE UK	13	1	1.5	2	2.5	3	3.5	4	4.5	5	5.5	6	6.5	7	7.5	8	8.5	9	
SIZE EUR	32	33	33.5	34	35	35.5	36	36.5	37	38	39	39.5	40	41	41.5	42	42.5	43	
SIZE JAPAN	19.8	20.4	20.8	21.1	21.8	22.1	22.4	22.8	23.1	24.2	24.9	25.5	25.8	26.4	26.8	27.2	27.5	27.8	
SIZE US	1	3.5	4	4.5	5	5.5	6	6.5	7	7.5	8	8.5	9	9.5	10	10.5	11	11.5	

## 03

### VAMPS



Our La Pointe models have a traditional U-cut vamp. If you prefer to opt for a different line where your foot will be less exposed, you can choose the V-cut option on demand.

## 04

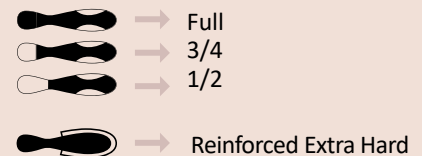
### WIDTH

narrow (N)  
medium (X)  
wide (XX)  
extra wide (XXX)  
x extra wide (XXXX)

We offer an additional width on demand: narrow (N).

## 05

### LENGTH & SHANK



Shank and length can be adapted according to your needs.

Extra Soft shank only available in full length.

RH and RXH shanks only available in 1/2 length.

# MAKING YOUR OWN CUSTOM-TAILORED SHOES

Wear Moi addresses dancers' individual needs through its Made to Measure department. Be it structural needs of the foot or esthetic preferences visually, "Custom-tailored" pointe shoes can make all the difference.

Many dancers from pre-professional to ballerinas of renowned ballet companies, already benefit from this service.



The most requested alterations to the upper include **higher or lower vamp, side, and or heel measurements. Bindings** can be produced with an elasticized casing, or a cotton drawstring encased in a cotton binding- the **drawstring may be placed on inside** if requested.

For dancers with a narrower heel in proportion to the ball of the foot, a **pin heel** may be beneficial. Shanks may be modified at the back of the shank. Lateral support at the ball of the foot may be adjusted with **lower, higher, firmer, or lighter wings.**

# La Pointe

By Wear Moi

## Made to Order

Date : - / - / -

Fitter's name : \_\_\_\_\_

Name : \_\_\_\_\_

Address : \_\_\_\_\_

Phone : \_\_\_\_\_

E-Mail : \_\_\_\_\_

SIZE	
STREET SHOES SIZE	
METATARSAL CIRCUMFERENCE*	
WIDTH	N X XX XXX XXXX XXXXX
SHANK STRENGTH	XS S M H RH RXH
SHANK LENGTH	F 3/4 1/2
DRAWSTRING	ELASTIC COTTON
VAMP*	
CUT	U V
HEEL*	
SIDE*	
WINGS	STANDARD HIGH
BOX	TAPER SQUARE
PLATFORM*	

\* Measurement in millimeter

Comments : \_\_\_\_\_

Mesures

cm 1 2 3 4 5 6 7 8 9 10 11 12

9  
8  
7  
6.5  
5.5  
5  
4.5  
3.5  
2.5  
2  
1  
13

**WIDTH**

- N → Narrow
- X → Medium
- XX → Wide
- XXX → Extra Wide
- XXXX → X Extra Wide
- XXXXX → XX Extra Wide\*\*\*

**SHANK STRENGTH**

- XS → Extra Soft\*
- S → Soft
- M → Medium
- H → Hard
- RH → Reinforced Hard\*\*
- RXH → Reinforced Extra Hard\*\*

**SHANK LENGTH**

- Full
- 3/4
- 1/2

**BOX**

- SQUARE
- TAPER

cm 1 2 3 4 5 6 7 8 9 10 11 12 13 14 15 16 17 18 19 20 21 22 23 24 25 26 27 28



## DIV 56



Pre-cut pointe shoe / ballet shoe cotton ribbon.

**Length:** 2 m / 2.20 yards per unit

**Width:** 2.2 cm / 7/8" wide

## DIV 57



Pre-cut pointe shoe / ballet shoe satin ribbon.

**Length:** 2 m / 2.20 yards per unit

**Width:** 2.3 cm / 7/8" wide

## DIV 61



Satin ribbon with stretch insert. Takes the stress off your heel tendon. 4 units per set.

**Length:** 57 cm / 22" per unit

**Width:** 2.3 cm / 7/8" wide

## DIV 15



Cotton ribbon, perfect for canvas ballet shoes, great for the matte look.

**Length:** 50 m / 55 yards per roll

**Width:** 2.2 cm / 7/8" wide

## DIV 31



Satin ribbon in roll.

**Length:** 80 m / 87 yards per roll

**Width:** 2.3 cm / 7/8" wide

## DIV 55



Pointe Shoe elastic in roll.

**Length:** 20 m / 22 yards per roll

**Width:** 1.9 cm / 3/4" wide

# Wear Moi

Designed in France

## SHOE ACCESSORIES

### DIV 58



Pre-cut pointe shoe elastic.

**Length:** 50 cm / 20" per unit

**Width:** 1.9 cm / 3/4" wide

### DIV 59



Pre-cut pointe shoe invisible elastic.

**Length:** 50 cm / 20" per unit

**Width:** 2.5 cm / 1" wide

### DIV 52



Thin and flexible silicone toe pads. Form perfectly to the foot allowing a dancer to truly feel the floor for proper technique while worn.

### DIV 54



Wear Moi invisible elastic in roll.

**Length:** 25 m / 27 yards per roll

**Width:** 2.5 cm / 1" wide

### DIV 13



Rock rosin, a real dancers helper.

**Weight:** 400g / 0.88 Pound

LYCRA®



## CLASSIQUE FOOTED TIGHTS – DIV 01

Footed matte semi-opaque ballet tights with a soft Lycra waistband and color-matched gusset (black excludes gusset). Super stretchy for excellent fit and performance, maintaining shape and color. Ideal for class, rehearsal, and performance. Featuring premium elastane and polyamide fibers wrapped in a special braiding technique for enhanced durability and resilience.

Microfiber - Fiber thickness: 50 denier

**Children: 4/8 - 8/12 - 12/14**  
**Ladies : S/M - L/XL**





Wear **Mei**  
Designed in France  
TIGHTS



## CLASSIQUE CONVERTIBLE TIGHTS – DIV 03

Convertible matte semi-opaque ballet tights, with a soft, comfortable Lycra waistband and color-matched gusset. Super stretchy, the unique weave of elastane and wrapped polyamide yarn offers exceptional durability, ensuring the tights maintain their shape through washes without shrinkage or fading. Perfect for class, rehearsal, and performance.

Microfiber - Fiber thickness: 50 denier

**Children: 4/8 - 8/12 - 12/14**

**Ladies : S/M - L/XL**





## CLASSIQUE FOOTLEESS TIGHTS – DIV 60

Footless matte semi-opaque ballet tights with a soft Lycra waistband and color-matched panel (gusset excluded in black). Super stretchy for an excellent fit and performance, maintaining both shape and color. Featuring high-quality elastane and polyamide wrapped threads, with a braiding method that enhances durability and resilience. Perfect for class, rehearsal, and performance.

Microfiber - Fiber thickness: 55 denier

**Children: 4/8 - 8/12 - 12/14**

**Ladies: S/M - L/XL**



LIGHT  
PINK



BLACK



# PREMIERE FOOTED TIGHTS - DIV 124



Children: 4/8 - 8/12 - 12/14  
Ladies: S/M - L/XL

Premiere footed tights with a supportive, thicker microfiber waistband for added comfort. Super stretchy and semi-opaque for an exceptional fit that holds its shape. Featuring a refined, lightly textured matte finish, it's the perfect option for class and performance.

Microfiber - Fiber thickness: 50 denier



LIGHT  
PINK



# PREMIERE CONVERTIBLE TIGHTS - DIV 123



Children: 12/14  
Ladies: S/M - L/XL

Dance to your heart's content in our Premiere Dance in our Premiere convertible tights with a soft microfiber waistband. Super-stretchy and semi-opaque, they transition easily from footed to footless. Ideal for class, rehearsal, and performance.

Microfiber - Fiber thickness: 50 denier



LIGHT  
PINK



DARK  
PINK



WALNUT



Collection PREMIÈRE Tights

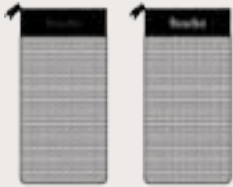
# DIV 79

Zippered bag made from breathable mesh that is perfect for your ballet shoes.

Honeycomb Fabric- Canvas

**Length:** 25 cm

**Width:** 13 cm



BLACK

BLACK  
SALMON

# DIV 80

Small accessory bag featuring breathable mesh and a zippered top for security.

Honeycomb Fabric- Canvas

**Length:** 12 cm

**Width:** 18 cm



BLACK

BLACK  
SALMON

# DIV 81

Classic breathable mesh bag with drawstrings, perfect for keeping your pointe shoes pristine.

Honeycomb Fabric- Canvas

**Length:** 33 cm

**Width:** 12 cm



BLACK

BLACK  
SALMON

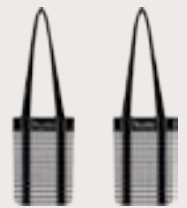
# DIV 82

Exclusive pointe shoe bag holds up to four pairs with breathable compartments. Features long shoulder straps for comfort.

Honeycomb Fabric- Canvas

**Length:** 22 cm

**Width:** 16 cm



BLACK

BLACK  
SALMON



## DIV 92

A large size quilted tote bag, honeycomb textured, with inside compartment. Satin lining and drawstring cinch closure.

Quilted Perforated Fabric

**Length:** 32 cm

**Width:** 36 cm



BLACK

## DIV 93

A small size quilted tote bag, honeycomb textured, with inside compartment. Satin lining and drawstring cinch closure.

Quilted Perforated Fabric

**Length:** 23 cm

**Width:** 27 cm



BLACK

## DIV 94

Quilted honeycomb accessory pouch with satin lining and zippered top, perfect for storing hair accessories.

Quilted Perforated Fabric

**Length:** 13 cm

**Width:** 12 cm



BLACK



Wear **Mei**  
Designed in France  
ACCESSORIES



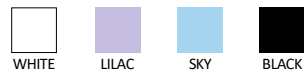
## DIV 42

One Size - Microfiber scrunchies match all Wear Moi colors perfectly.  
Microfiber.



## DIV 97

Bun cover with faux rhinestones. High quality materials and secure elastic.  
Polythylene - Acrylic stone



## DIV 108

One Size - Stretch Lace scrunchies



# DIV 63

Tutu keychain  
with rhinestones.  
Leather - Tulle



BLACK  
PACIFIC



BLACK  
PEACH



BLACK  
LILAC



# DIV 62

Tutu keychain  
with rhinestones.  
Satin - Tulle



BLACK  
SALMON

# DIV 88

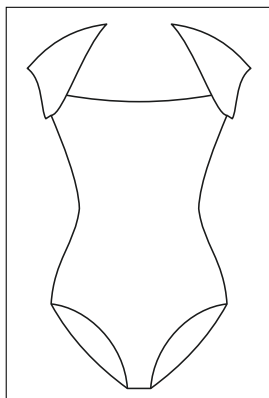
Tutu keychain  
with rhinestones.  
Leather - Tulle



SALMON  
WHITE



## HOW DO YOU PERSONALIZE YOUR ONE-OF-A-KIND ITEM?



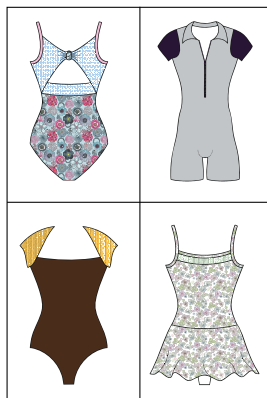
### 1• CHOOSE YOUR STYLE

Browse our wide range of products for women and men, and select the style you want to customize.



### 2• PERSONALIZE YOUR GARMENT

Design a unique item by applying different materials, colors and prints.



### 3• ORDER YOUR DESIGN

Add your creation to your cart. You will receive your original design within three to four weeks.



### 4• DANCE AND SHARE

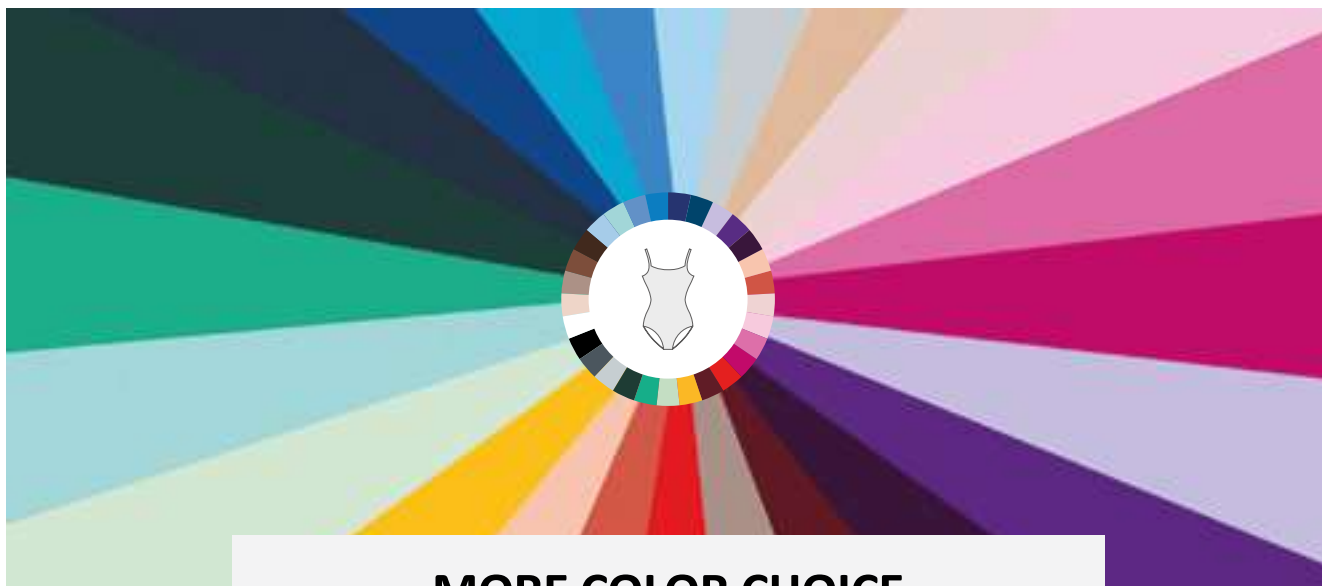
Share a photo of your Custom By Moi outfit by sending an email to [wearmoi@wearmoi.com](mailto:wearmoi@wearmoi.com)!



Unleash your creativity and design your own Wear Moi clothing line with Custom by Moi!

- An extensive styles selection for women & men: from classic to innovative designs
- Thousands of possible combinations: turn your creative vision into reality
- Custom by Moi items can only be returned if defective within 30 days of receipt





## MORE COLOR CHOICE












Boost your dance attire selection with our More Color Choice program! Wear Moi invites you to choose from a wide range of current designs for children, women, and men in a spectrum of colors beyond those in our catalog. To place an order, please contact our customer service team.

### Learn more about the program!

- Order quantity: multiples of 3 units per size and color
- Only apply to options not already available in our catalog
- Delivery: 3 to 4 weeks
- Wide selection of men's and women's styles



## Choose Color & Choose style - Microfiber

WHITE		ABBIE ARABESQUE ANGELIQUE CABRIOLE CANDIDE CONCERTO CYPRES*	DOLORES* EMERAUDE FAUSTINE GALATE HARLOW* LAVANDE* LOVINA	MARIE MAUVE PAGE PIROUETTE RUBY THALIA		ARDESIA* AZUREA* BAGATELLE* BALKALA* BALLERINE* GALLI* VOLANTE*		ALEGRO* APOLO* DELIA* DOLLY* DAPHNE* MAGDA* MELINA*								
BALLET PINK																
PEACH																
PINK																
BEIGE																
LILAC																
LIGHT GREY																
MINT																
SKY																
PACIFIC																
MOKA										ANA IKITA		ARIELLE GIPSY MACARON		IRIS		DIV42
FRENCH BLUE																
ROSE																
CORAL																
RED																
FUSHIA																
MIMOSA																
AZUR BLUE																
EMERALD																
WALNUT		ALPIN CONRAD HAXO MERCURY		MARCEAU ODEON		ATLAS CAPRI TANGO		CENTAUR HORACIO IGOR JASON LUPIN OBERON** VERSAO								
MOKA																
FRENCH BLUE																
ROSE																
CORAL																
RED																
FUSHIA																
MIMOSA																
AZUR BLUE																
EMERALD																
WALNUT																
PURPLE																
ROYAL BLUE																
DARK GREY																
BURGUNDY																
FOREST GREEN																
PRUNE																
NAVY																
BLACK																

(\*) Not available in walnut  
(\*\*) Not available in moka, pacific, forest green, french blue and ballet pink

## Choose Color & Choose style - Cotton

WHITE		ETUDE GLISSADE OPERA PRELUDE REVERENCE		ADAGE* ENTRECHAT*
BALLET PINK				
LILAC				
SKY				
WALNUT				
GREY				
NAVY				
BLACK				

(\*) Not available in walnut









# YOUR LOGO YOUR WAY

Wear Moi allow you to help dance schools to customize their uniforms by incorporating their logos onto a curated selection of iconic Wear Moi products, available in a diverse range of styles, sizes, and colors for children, women, and men.

- Order minimum: multiples of 3 units per size and color
- No setup fee
- School logo will replace the Wear Moi logo
- One silkscreen color print

## Women and girls styles

	ABBIE	DOLORES	MARIE		ARDESIA		ANA		OPUS
	ANGELIQUE	EMERAUDE	MAUVE		BAGATELLE		IKITA		PENELOPE
	ARABESQUE	FAUSTINE	PAGE		BALKALA				
	CABRIOLE	GALATE	PIROUETTE		BALLERINE				
	CANDIDE	HARLOW	RUBY		GALLI		ARIELLE		ILIADE
	CYPRES	LAVANDE	THALIA		NOISETTE		GIPSY		MACARON
	CONCERTO	LOVINA			VOLANTE				

## Men and boys styles

	ALPIN		CENTAUR		ODEON		BELEM		MALONE
	CONRAD		HORACIO		MARCEAU				
	HAXO		IGOR						
	MERCURY		JASON						
			LUPIN						
			OBERON						
			VERSAO						

SIZE	PRODUCT TYPE	MAXIMUM DIMENSION
SMALL LOGO	LEOTARDS, DRESSES, T-SHIRTS	1 inch / 25 mm
MEDIUM LOGO (Front)	JACKETS	2 inch / 55 mm
	PANTS	2 inch / 55 mm
LARGE LOGO (Back)	JACKETS (Child)	4 inch x 7 inch / 100 mm x 180 mm
	JACKETS (Adult)	5 inch x 10 inch / 130 mm x 260 mm

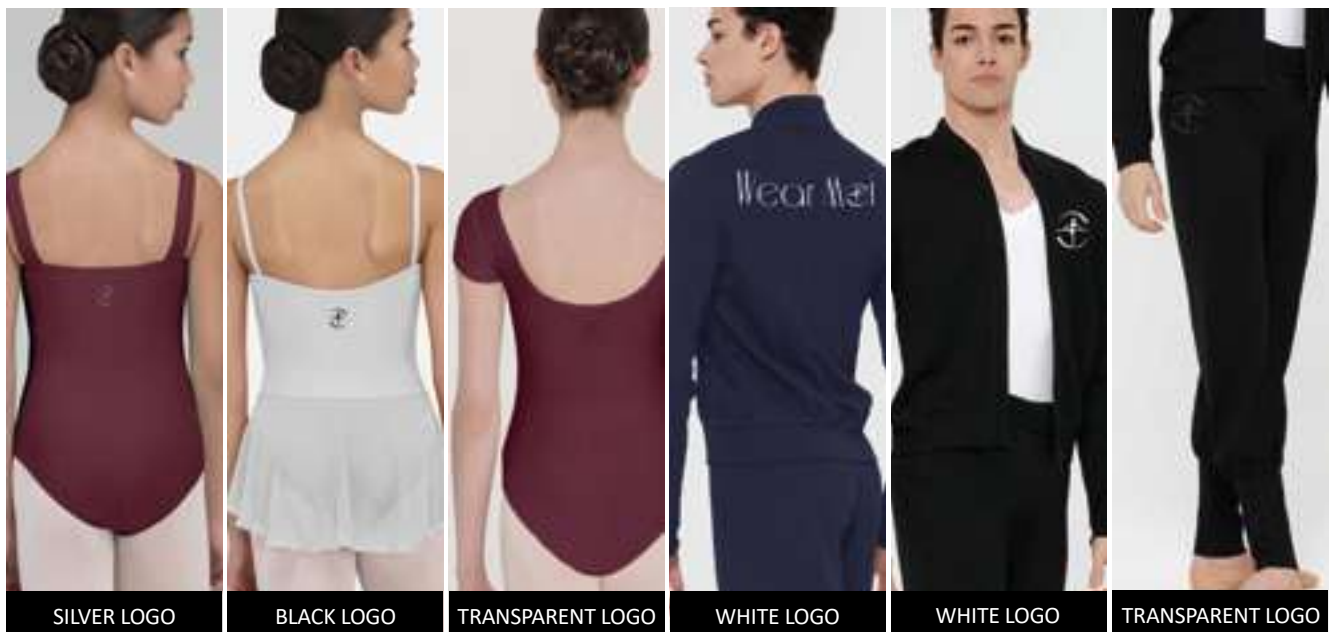
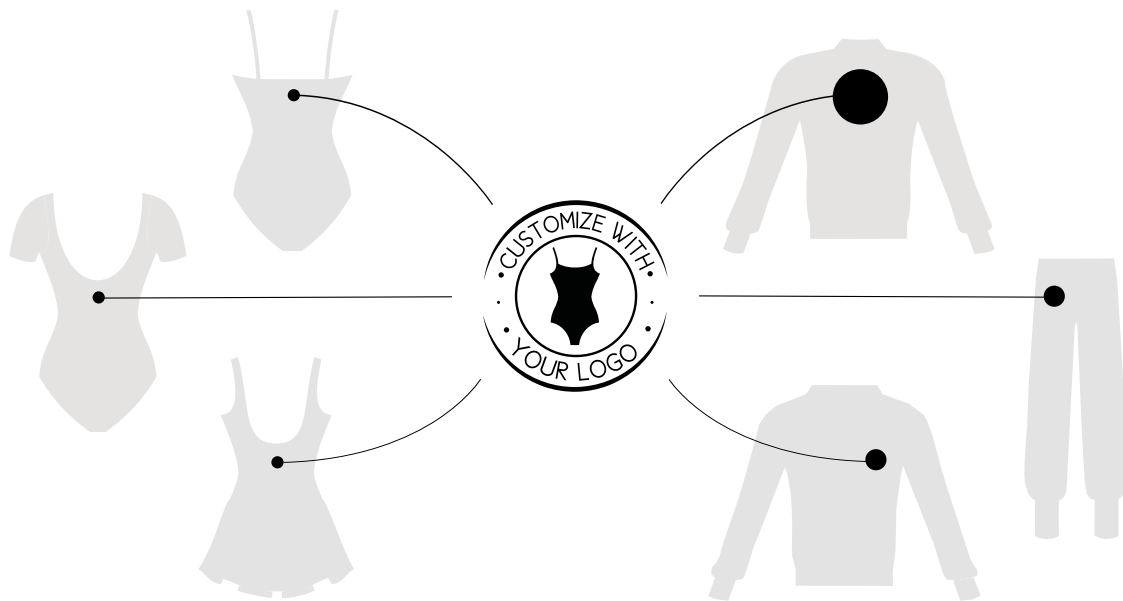
## How to place a Your Logo Your Way order?

**1 - Choose your product :** Select the eligible style(s) you wish to customize.

**2 - Send us your request :** Include the following information:

- Studio/School name
- Product: Style name, size and color
- Logo file: High-resolution .ai or .pdf format is required. High-res PNG with transparent background is also acceptable. No edits will be made to the logo on our end.
- Print color: Single-color only (White, Black, Golden, Silver or Transparent preferred). For other colors, please provide a Pantone reference.

**3 - Review & approve the mockup :** Our team will send you a PDF summary with a visual simulation of your logo placement. Please review and approve before printing.



SILVER LOGO

BLACK LOGO

TRANSPARENT LOGO

WHITE LOGO

WHITE LOGO

TRANSPARENT LOGO

# INDEX

ABBIE	p 7
ADAGE	p 32
ADELA	p 25
AELIS	p 24
ALBAN	p 103
ALCYONE	p 105
ALEGRO	p 20
ALFA	p 138
ALFA HARD	p 142
ALFA MEDIUM	p 141
ALFA REINFORCED HARD	p 143
ALFA SOFT	p 140
ALIAS	p 25
ALOES	p 85
ALPIN	p 108
ALTAN	p 110
ALYSON	p 64
ANA	p 90
ANDESITE	p 24
ANGELIQUE	p 16
APOLO	p 21
ARABESQUE	p 28
ARDESIA	p 19
ARIAL	p 132
ARIAL EXTRA SOFT	p 134
ARIAL HARD	p 137
ARIAL MEDIUM	p 136
ARIAL SOFT	p 135
ARIELLE	p 22
ARLETTY	p 49
ASTRA	p 126
ATLAS	p 106
ATTITUDE	p 89
AZTEC	p 25
AZUREA	p 19
BAGATELLE	p 29
BALKALA	p 19
BALLERINE	p 19
BALLET SHOES BAG - DIV 79	p 180
BELEM	p 104

BELMINE	p 63
BELT - DIV 117	p 24
BERGAMOTE	p 79
BUN ACCESSORIES - DIV 97	p 182
CABRIOLE	p 28
CALISSON	p 79
CALOU	p 85
CANDIDE	p 10
CAPELLA	p 84
CAPRI	p 115
CENTAUR	p 98
CERES	p 123
CEYLAN	p 86
CHARME	p 73
CIRNUM	p 63
CLOVIS	p 105
COLETTE	p 35
CONCERTO	p 29
CONDOR	p 111
CONRAD	p 108
CONVERTIBLE TIGHTS - DIV 03	p 176
CONVERTIBLE TIGHTS - DIV 123	p 178
COTTON RIBBON - DIV 56	p 172
COTTON RIBBON ROLL - DIV 15	p 172
CRISTAL	p 87
CRYSLIDE	p 87
CYPELLA	p 64
CYPRES	p 11
DANCE BELT EXTRA WIDE	p 112
DANCE BELT FULL SEAT	p 112
DANCE BELT NARROW	p 113
DANCE BELT WIDE	p 113
DANUBE	p 80
DAPHNE	p 20
DELIA	p 20
DEMI-POINTE	p 131
DOLLY	p 20
DOLORES	p 16
ELAN	p 106
EMERAUDE	p 7
EMMA	p 48
ENTRECHAT	p 32

EREBUS	p 81
ERINE	p 69
ETERNA	p 51
ETINCELLE	p 71
ETUDE	p 32
EVIDENCE	p 69
FADO	p 21
FAUSTINE	p 9
FELICITE	p 42
FILAO	p 83
FOOTED TIGHTS - DIV 01	p 174
FOOTED TIGHTS - DIV 124	p 178
FOOTLESS TIGHTS - DIV 60	p 177
GALATE	p 7
GALLI	p 13
GEMMA	p 59
GIPSY	p 22
GLISSADE	p 30
GUIMAUVE	p 78
HAMADA	p 105
HARLOW	p 16
HAXO	p 108
HIDALGO	p 102
HORACIO	p 110
IGOR	p 110
IKITA	p 90
ILIADE	p 94
IMPULSE2	p 128
INSTINCT2	p 128
INVISIBLE ELASTIC - DIV 54	p 173
IRIS	p 90
IVAN	p 110
IZALIA	p 87
JASMIN	p 40
JASON	p 111
JUNON	p 122
KAMAE	p 57
KEYCHAIN - DIV 62	p 183
KEYCHAIN - DIV 63	p 183
LAIKA	p 45
LA POINTE SQUARE	p 154
LA POINTE SQUARE EXTRA SOFT	p 156

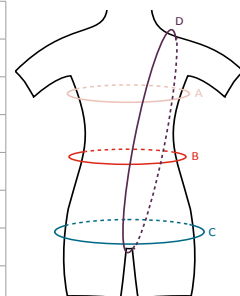
LA POINTE SQUARE HARD	p 159
LA POINTE SQUARE MEDIUM	p 158
LA POINTE SQUARE MORE OPTIONS	p 161
LA POINTE SQUARE REINFORCED HARD	p 160
LA POINTE SQUARE SOFT	p 157
LA POINTE SUR MESURE	p 170
LA POINTE TAPER	p 162
LA POINTE TAPER EXTRA SOFT	p 164
LA POINTE TAPER HARD	p 167
LA POINTE TAPER MEDIUM	p 166
LA POINTE TAPER MORE OPTIONS	p 169
LA POINTE TAPER REINFORCED HARD	p 168
LA POINTE TAPER SOFT	p 165
LAVANDE	p 11
LEATHER KEYCHAIN - DIV 88	p 183
LISERON	p 40
LOBELIA	p 63
LOVINA	p 10
LUPIN	p 98
MACARON	p 22
MAGDA	p 21
MAKALU	p 80
MALONE	p 104
MARCEAU	p 117
MARIE	p 17
MAUVE	p 17
MELEZE	p 80
MELINA	p 21
MENUET	p 89
MERCURY	p 109
MESH BAG - DIV 81	p 180
MESH POUCH - DIV 80	p 180
MIOSOTIS	p 64
NARCISSE	P 52
NAYA	p 86
NEPTUNE	p 124
NEREA	P 36
NOISETTE	p 74

NUAGE	p 74
OBERON	p 111
ODEON	p 117
OMEGA	p 144
OMEGA HARD	p 149
OMEGA MEDIUM	p 148
OMEGA MEDIUM 3/4	p 147
OMEGA REINFORCED HARD	p 150
OMEGA SOFT	p 146
OPERA	p 33
OPUS	p 94
ORION	p 102
PACO	p 117
PAGE	p 16
PALOMINO	p 93
PANDORE	p 93
PATIENCE	p 92
PEGASUS	p 129
PENELOPE	p 94
PIROUETTE	p 28
PIVOINE	p 93
PLUTON	p 121
POINTE SHOE BAG - DIV 82	p 180
POINTE SHOE ELASTIC - DIV 55	p 172
POUCH - DIV 94	p 181
PRALINE	p 74
PRELUDE	p 33
PRE-CUT ELASTIC - DIV 58	p 173
PRE-CUT INVISIBLE ELASTIC - DIV 59	p 173
PRESTON	p 104
QUILTED TOTE BAG - DIV 92	p 181
REINE	p 61
REMOVABLE BRA INSERT	p 17
REVERENCE	p 30
ROCK ROSIN - DIV 13	p 173
ROMEO	p 114
RUBY	p 14
SATIN RIBBON - DIV 57	p 172
SATIN RIBBON ROLL - DIV 31	p 172
SATURNE	p 125
SCRUNCHIES - DIV 42	p 182

SCRUNCHIES - DIV 108	p 182
SEPIK	p 38
SEPHIRA	P 39
SERENITE	p 52
SMALL TOTE BAG - DIV 93	p 181
SOLO	p 102
SONATE	p 89
STRETCH INSERT SATIN RIBBON - DIV 61	p 172
SUPERBE	p 76
SYRMA	p 76
TAGE	p 83
TANGO	p 114
THALIA	p 7
TIARA	p 86
TOE PADS - DIV 52	p 173
TULIPE	p 76
UTAMI	p 87
VERSAO	p 111
VESTA	p 120
VOLANTE	p 14
WILSON	p 101

## SIZE CHART - METRIC MEASUREMENT

GIRL SIZES	AGE 2/4	AGE 4/6	AGE 6/8	AGE 8/10	AGE 10/12	AGE 12/14
<b>Height (Size)</b>	90 - 105 cm	100 - 115 cm	110 - 125 cm	120 - 135 cm	130 - 145 cm	140 - 155 cm
<b>WEIGHT:</b>	10 - 15 kg	15 - 20 kg	17 - 27 kg	25 - 35 kg	30 - 40 kg	35 - 45 kg
<b>A: Chest Width</b>	50 - 55 cm	55 - 60 cm	60 - 65 cm	65 - 70 cm	70 - 75 cm	75 - 80 cm
<b>B: Waist</b>	45 - 50 cm	49 - 54 cm	50 - 55 cm	52 - 57 cm	53 - 58 cm	55 - 60 cm
<b>C: Hips</b>	50 - 55 cm	55 - 60 cm	60 - 65 cm	65 - 70 cm	72 - 78 cm	78 - 83 cm
<b>D: Girth</b>	80 - 90 cm	90 - 100 cm	100 - 110 cm	110 - 120 cm	115 - 125 cm	125 - 135 cm



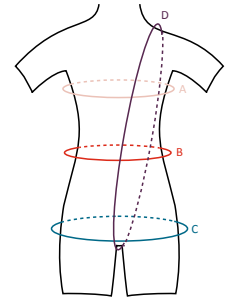
WOMEN SIZES	XS	S	M	L	XL	XXL	XXXL
<b>Height (Size)</b>	150 - 165 cm	160 - 175 cm	165 - 175 cm	165 - 180 cm	165 - 180 cm	165 - 185 cm	170 - 190 cm
<b>WEIGHT:</b>	40 - 50 kg	45 - 55 kg	50 - 60 kg	60 - 70 kg	70 - 80 kg	80 - 90 kg	90 - 100 kg
<b>A: Chest Width</b>	80 - 85 cm	85 - 90 cm	90 - 95 cm	95 - 100 cm	100 - 105 cm	105 - 110 cm	110 - 115 cm
<b>B: Waist</b>	55 - 60 cm	60 - 65 cm	65 - 70 cm	70 - 75 cm	75 - 80 cm	80 - 85 cm	85 - 90 cm
<b>C: Hips</b>	82 - 88 cm	87 - 92 cm	92 - 97 cm	95 - 100 cm	100 - 105 cm	105 - 110 cm	110 - 115 cm
<b>D: Girth</b>	132 - 140 cm	140 - 148 cm	148 - 156 cm	155 - 164 cm	164 - 172 cm	168 - 176 cm	175 - 180 cm

BOYS SIZES	AGE 2/4	AGE 4/6	AGE 6/8	AGE 8/10	AGE 10/12	AGE 12/14
<b>Height (Size)</b>		100 - 120 cm	113 - 133 cm	124 - 144 cm	135 - 155 cm	140 - 165 cm
<b>WEIGHT:</b>		15 - 20 kg	20 - 27 kg	25 - 35 kg	30 - 40 kg	35 - 45 kg
<b>A: Chest Width</b>		55 - 60 cm	60 - 65 cm	64 - 69 cm	68 - 75 cm	72 - 79 cm
<b>B: Waist</b>		52 - 57 cm	56 - 55 cm	58 - 63 cm	60 - 65 cm	63 - 68 cm
<b>C: Hips</b>		55 - 60 cm	60 - 65 cm	65 - 70 cm	71 - 78 cm	75 - 80 cm
<b>D: Girth</b>		90 - 100 cm	100 - 110 cm	110 - 120 cm	115 - 125 cm	125 - 135 cm

MEN SIZES	XS	S	M	L	XL
<b>Height (Size)</b>	155 - 170 cm	160 - 175 cm	165 - 180 cm	170 - 185 cm	170 - 195 cm
<b>WEIGHT:</b>	45 - 55 kg	55 - 65 kg	65 - 75 kg	75 - 85 kg	85 - 95 kg
<b>A: Chest Width</b>	76 - 83 cm	83 - 91 cm	91 - 97 cm	97 - 104 cm	104 - 110 cm
<b>B: Waist</b>	65 - 70 cm	70 - 75 cm	75 - 80 cm	80 - 85 cm	85 - 90 cm
<b>C: Hips</b>	80 - 85 cm	85 - 90 cm	90 - 95 cm	95 - 100 cm	100 - 105 cm
<b>D: Girth</b>	130 - 145 cm	140 - 160 cm	145 - 165 cm	150 - 170 cm	155 - 170 cm

## SIZE CHART - IMPERIAL MEASUREMENT

GIRL SIZES	AGE 2/4	AGE 4/6	AGE 6/8	AGE 8/10	AGE 10/12	AGE 12/14
Height (Size)	3'1" - 3'5"	3'3" - 3'9"	3'7" - 4'1"	3'11" - 4'5"	4'3" - 4'9"	4'7" - 5'1"
WEIGHT:	22 - 33 lbs	33 - 44 lbs	37 - 59 lbs	55 - 77 lbs	66 - 88 lbs	77 - 99 lbs
<b>A: Chest Width</b>	19 - 21"	21 - 23"	23 - 25"	25 - 27"	27 - 29"	29 - 31"
<b>B: Waist</b>	18 - 20"	19 - 21"	20 - 22"	21 - 23"	21 - 23"	22 - 24"
<b>C: Hips</b>	20 - 22"	22 - 24"	24 - 26"	26 - 28"	29 - 31"	31 - 33"
<b>D: Girth</b>	31 - 35"	35 - 39"	39 - 43"	43 - 47"	45 - 49"	49 - 53"



WOMEN SIZES	XS	S	M	L	XL	XXL	XXXL
Height (Size)	4'11" - 5'5"	5'3" - 5'9"	5'5" - 5'9"	5'5" - 5'11"	5'5" - 5'11"	5'5" - 6'	5'7" - 7'1"
WEIGHT:	88 - 110 lbs	99 - 121 lbs	110 - 132 lbs	132 - 154 lbs	154 - 176 lbs	176 - 198 lbs	198 - 220 lbs
<b>A: Chest Width</b>	31 - 33"	33 - 35"	35 - 37"	37 - 39"	39 - 41"	41 - 43"	43 - 45"
<b>B: Waist</b>	21 - 24"	24 - 26"	26 - 28"	28 - 30"	30 - 32"	32 - 34"	33 - 35"
<b>C: Hips</b>	33 - 35"	35 - 37"	37 - 39"	38 - 40"	39 - 41"	41 - 43"	43 - 45"
<b>D: Girth</b>	52 - 55"	55 - 58"	58 - 62"	62 - 65"	65 - 68"	66 - 69"	68 - 71"

BOYS SIZES	AGE 2/4	AGE 4/6	AGE 6/8	AGE 8/10	AGE 10/12	AGE 12/14
Height (Size)		3'3" - 3'11"	3'9" - 4'4"	4'1" - 4'9"	4'5" - 5'1"	4'7" - 5'5"
WEIGHT:		33 - 44 lbs	44 - 60 lbs	55 - 77 lbs	66 - 88 lbs	77 - 99 lbs
<b>A: Chest Width</b>		22 - 24"	24 - 26"	25 - 27"	27 - 29"	29 - 31"
<b>B: Waist</b>		21 - 23"	22 - 24"	23 - 25"	25 - 26"	25 - 27"
<b>C: Hips</b>		22 - 24"	24 - 26"	26 - 28"	28 - 30"	30 - 32"
<b>D: Girth</b>		35 - 39"	39 - 43"	43 - 47"	45 - 49"	49 - 53"

MEN SIZES	XS	S	M	L	XL
Height (Size)	5'1" - 5'7"	5'3" - 5'9"	5'5" - 5'11"	5'7" - 6'1"	5'7" - 6'5"
WEIGHT:	99 - 121 lbs	121 - 143 lbs	143 - 165 lbs	165 - 187 lbs	187 - 209 lbs
<b>A: Chest Width</b>	31 - 33"	33 - 36"	36 - 38"	38 - 41"	41 - 44"
<b>B: Waist</b>	26 - 28"	28 - 30"	30 - 32"	32 - 34"	34 - 36"
<b>C: Hips</b>	32 - 34"	34 - 36"	36 - 38"	38 - 40"	40 - 42"
<b>D: Girth</b>	51 - 57"	55 - 62"	57 - 65"	59 - 67"	61 - 67"

## SIZE CHART - TIGHTS

### METRIC MEASUREMENT

DIV 01 – DIV 60

SIZES	4/6	6/8	8/10	10/12	XS	S	M	L
HEIGHT IN CM	100 - 115	110 - 125	120 - 135	130 - 145	150 - 165	160 - 175	165 - 175	165 - 180
WEIGHT IN KG	15 - 20	17 - 27	25 - 35	30 - 40	40 - 50	45 - 55	50 - 60	60 - 70

DIV 03 – DIV 123 – DIV 124

SIZES	4/8	8/12	12/14	S/M	L/XL
HEIGHT IN CM	100 - 125	120 - 145	140 - 155	160 - 175	165 - 180
WEIGHT IN KG	15 - 27	25 - 40	35 - 45	45 - 60	60 - 80

### IMPERIAL MEASUREMENT

DIV 01 – DIV 60

SIZES	4/6	6/8	8/10	10/12	XS	S	M	L
HEIGHT IN INCHES	3'3" - 3'9"	3'7" - 4'1"	3'11" - 4'5"	4'3" - 4'9"	4'11" - 5'5"	5'3" - 5'9"	5'5" - 5'9"	5'5" - 5'11"
WEIGHT IN LBS	33 - 44	37 - 59	55 - 77	66 - 88	88 - 110	99 - 121	110 - 132	132 - 154

DIV 03 – DIV 123 – DIV 124

SIZES	4/8	8/12	12/14	S/M	L/XL
HEIGHT IN INCHES	3'3" - 4'1"	3'11" - 4'9"	4'7" - 5'1"	5'3" - 5'9"	5'5" - 5'11"
WEIGHT IN LBS	33 - 59	55 - 88	77 - 99	99 - 132	132 - 176

## SIZE CHART - POINTE SHOES & DEMI PAINTE

SIZE UK	13	1	1.5	2	2.5	3	3.5	4	4.5	5	5.5	6	6.5	7	7.5	8	8.5	9
SIZE US	1	3.5	4	4.5	5	5.5	6	6.5	7	7.5	8	8.5	9	9.5	10	10.5	11	11.5
SIZE EUR	32	33	33.5	34	35	35.5	36	36.5	37	38	39	39.5	40	41	41.5	42	42.5	43
SIZE JAPAN	19,8	20,4	20,8	21,1	21,8	22,1	22,4	22,8	23,1	24,2	24,9	25,5	25,8	26,4	26,8	27,2	27,5	27,8

## SIZE CHART - BALLET SHOES

### CHILD

EURO	23	24	25	26	27	28	29	30	31	32	33
US	7	8	8,5	9	10	10,5	11	12	12,5	13,5	1
JAPAN	14,3	15	15,6	16,3	17	17,6	18,3	19	19,6	20,3	21
UK	6	7	8	8.5	9	10	11	11.5	12.5	13	1

### WOMEN

EURO	34	35	36	37	38	39	40	41	42	43	44	45	46
US	3	4	5	5,5	6,5	7	8	9	9,5	10	11	12	13
JAPAN	21,6	22,3	23	23,6	24,3	25	25,6	26,3	27	27,6	28,3	29	29,6
UK	2	2.5	3.5	4	5	5.5	6.5	7.5	8	9	9,5	10	11

### MEN

EURO	34	35	36	37	38	39	40	41	42	43	44	45	46	47	48	49	50
US	2,5	3,5	4,5	5	6	6,5	7	8	8,5	9	10	11	12	12,5	13	14	15
JAPAN	21,6	22,3	23	23,6	24,3	25	25,6	26,3	27	27,6	28,3	29	29,6	30,3	31	31,6	32,3
UK	2	2,5	3,5	4	5	5,5	6,5	7,5	8	9	9,5	10	11	12	12,5	13	14

Stretch Canvas Soft Shoes: We suggest opting for two sizes larger than your regular fit. If you want more support, sticking to your usual size or going one size up would be ideal.

### TURNER SHOES

	XS	S	M	L	XL					
EURO	34	35	36	37	38	39	40	41	42	43
US	4	4.5	5.5	6.5	7	7.5	8	8.5	9	9.5
UK	2	2.5	3.5	4.5	5	5.5	6.5	7	8	9
JAPAN	21	21,5	22	22,5	23,5	24,5	25,5	26	26,5	27,5

# Wear Mei

Designed in France