

Winchelsea Star

Price \$1

Your Weekly Community Newspaper

Since 1977

Vol 47 Ed 25

Tuesday 2 July 2024

winchelseastar.org.au



**Wrap up of Winchelsea
Auskick for 2024!**



Wrap up of Winchelsea Auskick for 2024!

by Colleen (Auskick coordinator)

It was amazing to see so many people turn up to see our 2024 mini games yesterday at the Blues in the half time break.

Thanks again to all parents for their contribution.

See most of you in 2025!



VICTORIA POLICE

IF YOU'VE HAD YOUR  OR  STOLEN, BUT DON'T HAVE THE  TO VISIT YOUR LOCAL  STATION...



 report online

ANYTIME

**WHEN YOU NEED US,
BUT NOT THE SIRENS**



LEARN MORE



Authorised by the Victorian Government, 1 Treasury Place, Melbourne





Lou is one of 14 people whose photo was included in the most recent Art Exhibition at Winchelsea Shire Hall. The rest of the subjects will be revealed in coming weeks.

Lou

“Landscapes feed my creative passions”. Lou and her partner Danny selected Winchelsea due to its proximity to the coast and Ballarat, as a place they could build their life together. Much searching led Lou to find an historic building that won her heart and mind. “In this former Wesleyan chapel, Mr E Carse set up school in opposition to other schools. The bluestone and timber complex was used as a school for 12 years from 1867”. True to form Lou had a vision, with her art skills (honed for many years at Victoria University), she and Danny set about creating a new home. A purpose-built studio for Lou’s own creative pursuits is now a new type of school – printmaking, painting and drawing classes. Lou is creating a closely woven network of connections that are signalling the change that a town like Winchelsea needs and welcomes. Lou loves living here and sees it as a place her heart belongs.

STS
ACCOUNTING
GROUP

**Your Taxation
&
Superannuation
Specialists.**

Winchelsea
5267 2673
www.surftax.com.au

ven11664

SIMCO
PLUMBING SERVICE

Domestic - Commercial - Rural

0400 643 976

- All general Plumbing and Gasfitting • Water tanks and Pumps
- Renovations and Extensions • Hot water and Heat pump
- Split system and Wood heaters • Roof and Gutter
- Septic and Treatment plants • Excavation, Bobcat and Tipper
- Driveways and Earthworks
- Blocked drains and CCTV Inspection

Simon McGillivray
Lic: 109610 Free Quotes, Fast & Friendly Service





Train Station Face-lift

by Elaine Atkinson, Growing Winchelsea

Over the coming months our train station will continue its facelift with further beautification underway.

You may have noticed the agapanthus have gone and shortly the roses on the platform will receive a well needed prune to aid their rejuvenation before relocation.

Thanks to a \$5000 Community Initiatives grant from the Surf Coast Shire additional work will be undertaken with environmentally appropriate feature tree planting to replace or complement existing trees and upgrading platform planter boxes with the support of community volunteers.

Establishing further manageable garden beds and landscape areas to address site drainage issues and assist the natural shading of car park areas, will add interest and vibrancy further enhancing our mural made possible by local artist Lauren Green.

“Providing a welcoming entry to the township from the Station Precinct has appeal to residents and visitors alike. The Stationeers programme subcommittee will work specifically with community participants, V/Line, Vic Track and Keep Victoria Beautiful to enhance the visual appeal of the area while improving the usage of the precinct as a community asset,” said John Tebbutt, President of Growing Winchelsea.


Growing Winchelsea continues to advocate on behalf of the community to support our growth and development and on behalf of fellow committee members I thank Surf Coast Shire for their continued commitment and to the many volunteers who continue to make a positive impact to the improvement of the cultural heritage of Winchelsea,” concludes John.




R and R Productions presents

All Fired Up

An 80s Mixed Tape Musical
by Rachel Terry & Roz Pappalardo

 Friday, 19 July 2024

 7 pm

 Ticket \$30, Concession \$27, COPACC 2024 Member \$24

 Tickets at www.copacc.com.au,
at the Box Office and on 03 5232 9418 (option #2)






WINCHELSEA LIONS CLUB
 ARE SELLING ENVIRONMENTALLY FRIENDLY SHREDDED PAPER COMPRESSED BRICKS FOR YOUR FIRE
 SAVE ON THE RISING COST OF WOOD BY INCLUDING PAPER BRICKS AS WELL

PACKET OF 4 ROARS (BRICKS) **\$5**
 ROLL OF PURRS (SMALL ROLLS) **\$2**

AVAILABLE AT LIONS PAPER SHED
 36 HARDING STREET
 SATURDAY MORNINGS
 10AM - 12 NOON
 FROM 4TH MAY UNTIL SOLD OUT


EFTPOS AVAILABLE
 CASH ACCEPTED



Charles Stewart & Company are leading livestock and real estate service providers covering Victoria's south west

	LIVESTOCK
Jamie McConachy	0418 522879
Peter McConachy	0408 522878
Matt Nelson	0428 315400
Gerard Bohan	0400 005541
Lachie Barclay	0438 346291
John Thornton	0408 526367
Dougal McIntyre	0439 575612
Ross Spitty	0419 539717
	REAL ESTATE
Michael Stewart	0418 520467
Daryl Osborne	0419 388341
Anthony McDonald	0418 593597
Gerard Bohan	0400 005541
Stephen Lugg	0417 556098
Josh Lamanna	0417 586032

Office
 56 Bromfield Street, Colac
www.charlesstewart.com.au

HF RICHARDSON

PROPERTY

Servicing all your real estate needs
 Ken McDonald **0418 524 150**



Residential | Rural Lifestyle | Agricultural Farms




Moriac Veterinary Clinic
0447 781 089
 PHONE 24 HOURS
 784 Hendy Main Road Moriac
info@moriacvet.com
www.moriacvetclinic.com.au
 HOURS // Monday - Friday: 8am - 5pm

Commercial | Industrial | Domestic

HAMILTONS
 Truck & Bobcat Hire
 Give Aaron a Call
0438 438 623

MGT BUILDING & CONSTRUCTION

NEW HOMES | EXTENSIONS | RENOVATIONS **Ph: 0409 433 687**



Chiropractic - Remedial Massage - Myotherapy - Sound Healing - Breathwork

Chiropractic care for:

Stress & Anxiety	Pain Management
Body Aches & Tension	Family Wellbeing
Poor Sleep	Health Longevity

03 5267 2240 Shop 4/21 Hesse St Winchelsea   <https://onebodychiropractic.com.au/>





THURSDAY 4TH JULY
WINCHELSEA
FREE
FOOD
HANDLERS
CERTIFICATE

Winchelsea Shire Hall
10am-2pm

Free for young people, aged 12-25

Please sign up via the link in our bio.
Contact esweeney@surfcoast.vic.gov.au with any questions



Winchelsea Star

eldersrealestate.com.au

Elders

You're in Safe Hands With Peter Lindeman Delivering Exceptional Results for Over 20 Years

If you're thinking of selling a Rural or Lifestyle acreage property on the Bellarine, the Greater Geelong region or beyond then think Peter Lindeman.

Peter spent 20 years managing farms before jumping the fence to sell them; and over the last 23 years he's helped over 350 vendors achieve extraordinary results, more often than not surpassing their expectations. Why not let Peter show you how he can help you achieve an outstanding result for your property.

Peter Lindeman - 0418 525 609
RURAL AND LIFESTYLE SALES MANAGER - ELDERS GEELONG

E: peter.lindeman@elders.com.au



Soft plastics collection trial

Council is trialling a soft plastics drop-off event.

During July, bag up your clean and dry soft plastic packaging, then drop it into the soft plastics collection bins at:

Winchelsea Transfer Station:

- 2pm to 4pm on Thursday 1 August
- 1.30pm to 3.30pm on Saturday 3 August
- 9.30am to 12.30pm on Sunday 4 August

Lorne Transfer Station:

- 9am to 12pm on Friday 2 August
- 9am to 12pm on Saturday 3 August
- 2pm to 5pm on Sunday 4 August

Anglesea Transfer Station:

- 9am to 4pm on Friday 2 August
- 9am to 4pm on Saturday 3 August
- 9am to 4pm on Sunday 4 August

Soft plastic packaging can be easily scrunched in your hand. Things like plastic bags, chip packets, bread bags, snaplock bags, bubble wrap, sturdy pet food bags and more.

**YOUR SOFT PLASTIC PACKAGING MUST BE CLEAN AND DRY.
REMOVE ALL FOOD, LABELS AND STAPLES.**

Before you get started, visit surfcoast.vic.gov.au/softplastics or scan the **QR code** to check the soft plastics you can collect and which plastics are not accepted.



Look for this symbol on your soft plastic packaging to indicate it can be recycled in the trial.



Soft plastic packaging collected during the trial drop-off event will be sent to APR Plastics and Close the Loop to be converted back into soft plastics and recycled road products. This will help drive a circular economy, diverting materials from landfill and keeping valuable resources in use.

surfcoast.vic.gov.au/softplastics





29 June 2024

Trebeck Reserve, Winchelsea

This week 19 participants completed the course through Trebeck Reserve in light rain. Congratulations to Chris Hurren and Alison Dean who completed their personal best time for Trebeck Reserve. Well done everyone who walked, ran or volunteered.

We had visitors from Torquay, Ocean Grove, Westerfolds, Portarlington, Warragul and Albert Park. There was 5 members of a family covering 3 generations.

Please email trebeckreserve@parkrun.com if you are able to volunteer some of your time. Tasks are simple, sociable, fun and very much appreciated.

This event was made possible by the following volunteers.

If you wish to join us any Saturday morning as a walker, runner or volunteer please complete the simple online registration at parkrun.com.au/register. This only needs to be done once and can be used worldwide.

Liz BENNETT * Kate McINNES * Ann Morsby * Kris CZERKIEWICZ * Neil McINNES * Alan WISHART * Helen WOODALL * Don SMITH

Well behaved dogs on a short hand held leash are welcome (no waist harnesses please)

A summary of this week's results can be found at trebeckreserveparkrun.com.au/results

parkrun was conducted at 490 locations across Australia this week.

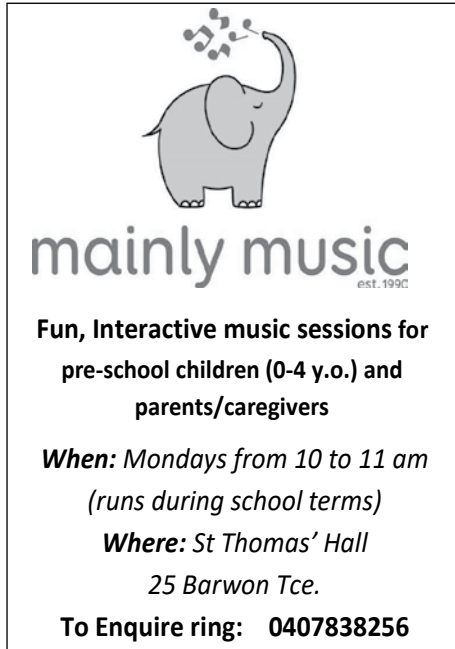
Please check out our Facebook page for today's photos and further information.

It takes a minimum of six people each week to safely conduct an event.





Kyeema
Rural Fencing Pty. Ltd.
Jason Armstrong & Jay Hawker
1080 Prices Lane, Ombersley, Victoria, 3241
0419 565085 (Jason)
0416 585817 (Jay)
kyeemafarm@kyeemafarm.com.au
Also incorporating domestic and rural tree trimming services.



mainly music
est. 1990

Fun, Interactive music sessions for pre-school children (0-4 y.o.) and parents/caregivers

When: Mondays from 10 to 11 am
(runs during school terms)

Where: St Thomas' Hall
25 Barwon Tce.

To Enquire ring: 0407838256

CONCRETER
Alister Aitken

No job to big or small

- Driveways - Carports - Crossovers - Footpaths -
Sheds Slabs - Colored Concrete - Concrete sealing - Exposed Aggregate - & more -

Call or text for a no obligation free quote

Servicing our local Winchelsea & Surrounding Areas

alaitken.aa@gmail.com or Alister - 0411 871 950

A.B.N 47 228 574 460



5234 6585 0417 385 984

For all your septic tank, grease traps and interceptor pits servicing.
Locally owned and operated

NO MATTER WHAT YOUR PROBLEM, DODDS ELECTRIX CAN DEFUSE THE SITUATION.

RURAL, INDUSTRIAL, COMMERCIAL DOMESTIC
PHONE 0438 887 360
EMAIL: DODDSY@FASTMAIL.FM
PO BOX 36 BIRREGURRA, VICTORIA 324
REC: 17520 ABN: 64 581 250 880

Knuckey's Winchelsea
Ph: 5267 2011

Knuckey's have in stock a complete range of batteries to suit tractor, heavy machinery, cars, utes

The largest range of the best oil for your vehicles—**CASTROL**—
'when only the best will do'

The largest range of V belts.
A, B, C, D M Sections
Bolts and nuts for all occasions
Steel cut to size

Winchelsea Star

<p>send your stories news@winchelseastar.org.au</p> <p>LOCAL NEWS and ARTICLES WELCOME Include name and address of the sender Email news@winchelseastar.org.au Leave hard copy at IGA Supermarket</p> <p>DEADLINE 5pm Fridays 4pm Sundays - hard copy articles left at IGA 6pm Sundays - sports results and weekend events</p> <p>ADVERTISING advertising@winchelseastar.org.au 0408 102 802</p> <p>free digital subscription winchelseastar.org.au</p> <p>FOLLOW US ONLINE winchelseastar.org.au</p> <p>FACEBOOK facebook.com/TheWinchelseaStar</p>	<p>production</p> <p>Editors: Cerrie Fogan, Yvonne Stevens, Judy Cameron Advertising: Sasha Gauntlett, Neil McInnes Design: Tony Phelps, Susan Corby Printing: Winchelsea Community House Website: Winch Websites</p> <p>committee</p> <p>President: president@winchelseastar.org.au Neil McInnes Treasurer: treasurer@winchelseastar.org.au Cathy Cheadle Secretary: secretary@winchelseastar.org.au Tony Phelps Members: Linda Carter, Sasha Gauntlett, Judy Cameron, Yvonne Stevens, Cerrie Forgan</p> <p>© Winchelsea Star Org. Inc. All rights reserved Winchelsea Star Organisation Inc. Reg. No. A0053999F ABN 75 941 529 279 winchelseastar.org.au PO Box 5 Winchelsea 3241 Views expressed are not necessarily those of the Winchelsea Star or its Committee. The Winchelsea Star reserves the right to edit or not publish any article.</p>  <p>MEMBER 2023</p>
---	--



Winchelsea Star **COMMUNITY NOTICEBOARD**

editor@winchelseastar.org.au or
leave at Winchelsea IGA

SAMMY STAMPS

The long running Sammy Stamp program is still collecting your used stamps to support several charities due to the continued support of church, community groups, individuals and businesses in Vic, Tas and Australia.

Last year the amazing \$42,000 was realized from sales of the used stamps. In 2023 grants to the value of \$38,500 were approved to several charities. Since the program started in 1977, the amazing amount of \$1,158,393.

A group of helpers gather weekly to trim and sort the stamps.

If you would like to be involved in saving postage stamps, please contact Jeanette Mcconachy 0409418766 to arrange collection.

Stamps can be trimmed leaving 1/2" surround.

WINCHELSEA LIONS CLUB

Planning Christmas in July? Winchelsea Lions have Large cakes \$20 Small cakes \$16 Puddings \$16

Raymond 0406 371 239

WINCHELSEA PICKLEBALL

Winchelsea Leisure Time Centre
(next to the Primary School)
Wed 7-830pm or Thurs10-11.30am.
All equipment supplied,
wear suitable footwear.
Lesley Mathison 0438 672 197

Diamond day

Saturday 6th July
11.00am - 4 pm
Senior citizens winchelsea
See you there

Winchelsea Tennis Club

JUNIOR COACHING

Mondays from 3.30pm with experienced Nicole Mullen, \$10

SOCIAL TWILIGHT TENNIS

Monday evenings from 6.00pm.
All Welcome!



Social Bridge is played
every Tuesday 10.30 am - 1.00 pm

Senior Citizens Centre
36 Harding Street Winchelsea

New players always welcome

Contact
Elaine Atkinson 0458009616

**Winchelsea
Community Market**
Shire Hall
9am - 1pm

7 July 2024	6 October 2024
4 August 2024	3 November 2024
1 September 2024	1 December 2024



13 11 14

Zeally Sands wetland improvements

Surf Coast Shire Council is starting work to improve the function of sediment ponds and drains in Torquay's Zeally Sands constructed wetland.

The wetland, between Rippleside Drive and The Sands, is part of the stormwater network for the Torquay north catchment and is the last constructed wetland in the system before the stormwater enters The Sands Amenity Lake system.

It provides an important function filtering the stormwater before it enters The Sands amenity lakes.

"This wetland is part of the north Torquay stormwater network which feeds into the adjoining culturally and environmentally significant Karaaf wetlands, and this project is part of our wider ongoing work addressing the quality and volume of stormwater impacting the Karaaf," Mayor Liz Pattison said.

"A recent review of the network highlighted need for clearing the Zeally Sands wetland sediment ponds and drains to improve their effectiveness.

"We thank residents living near the wetland for their understanding as we complete this important environmental work, which should be complete by the end of July."

Work will start on 1 July and excavation will be underway for several weeks, removing sediment, dense vegetation and rocks from Amenity Lake and Wetland 3 Sediment basins, as well as central and southern open swale drains.

Contractors will have strict sediment management controls in place to help prevent disturbed sediment running from the wetland before it can be removed by excavator.

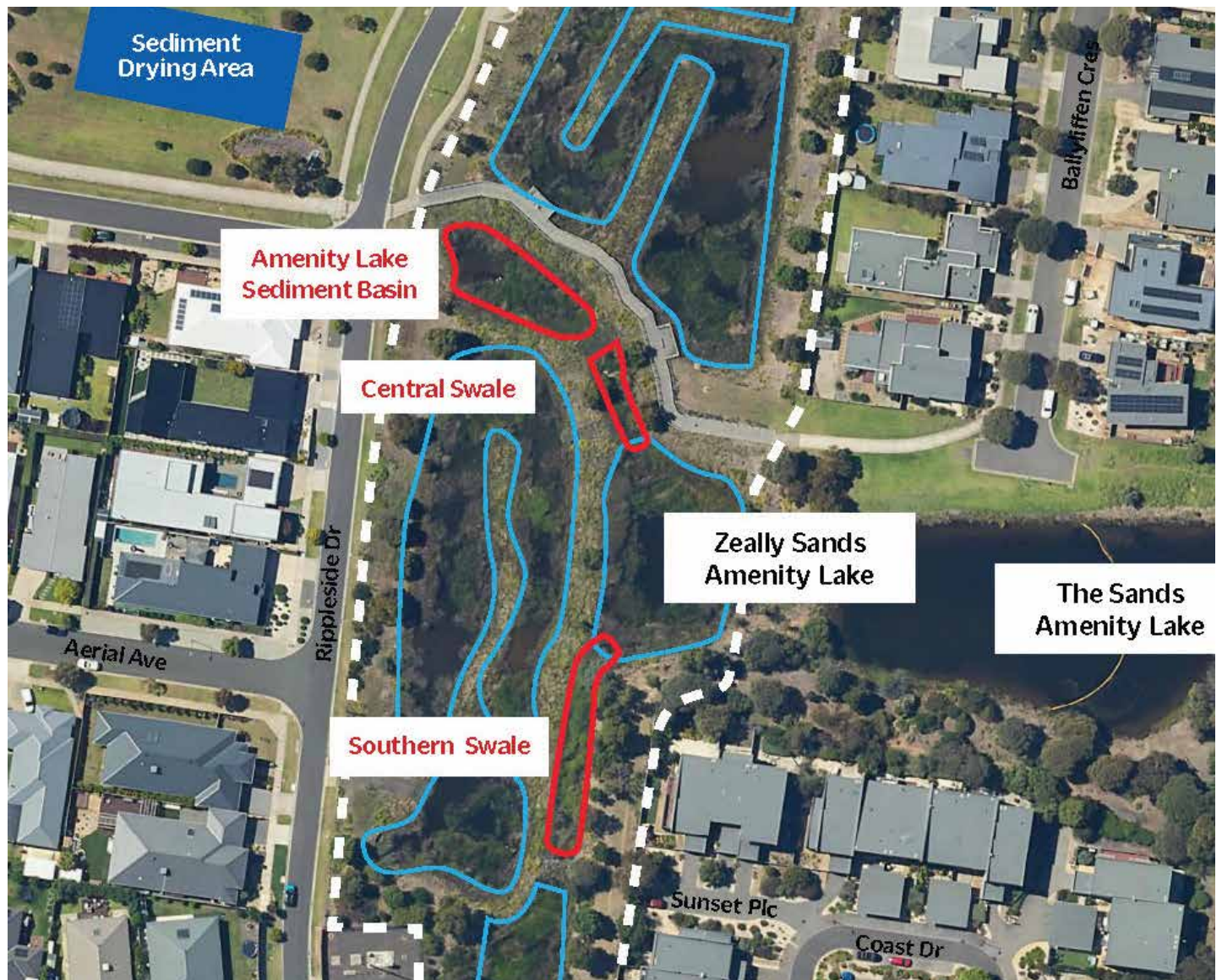
Rocks will be returned and plants replaced once the maintenance excavation is complete.

All work will be completed under the supervision of qualified ecologists. Fauna such as fish and eels will be relocated within the wetlands before excavation starts.

Sediment removed from the ponds will be temporarily stored to dry in the adjoining Timara Park, and vegetation taken to dry at a vacant space near Grass Tree Park before being mulched.

Traffic management will be in place around the works.

People seeking more information can email info@surfcoast.vic.gov.au or phone 5261 0600.





WINCHELSEA FACEBOOK

Non-profit community Groups and Pages

What's on in Winchelsea	facebook.com/WhatsoninWinchelsea
Winchelsea FREE	facebook.com/groups/winchelseafree
Winchelsea Community Information	facebook.com/groups/207538644446972
Winchelsea Classifieds 3241	facebook.com/groups/216942861684082
Winchelsea Lost and Found	facebook.com/groups/768187693217518
Winchelsea Op Shop	facebook.com/HospitalAuxiliaryOpShopWinchelsea
Winchelsea Shire Hall	facebook.com/WinchelseaShireHall
Winchelsea Community House	facebook.com/winchelseacommunityhouse
Winchelsea Coronavirus Community Support Group	facebook.com/groups/2676957719207927/
The Green Winchelsea Residents	facebook.com/groups/515322772623126
Growing Winchelsea Inc	facebook.com/growingwinch
Winchelsea Star	facebook.com/TheWinchelseaStar
Winchelsea Movie Club	facebook.com/winchelseamovies
Winchelsea Community Market	facebook.com/100083362387611
Winchelsea Land and River Care Group	facebook.com/envirowinchelsea/
Upper Barwon Landcare Network	facebook.com/UpperBarwonLandcare
Winchelsea & District Historical Society Inc	facebook.com/Winchelseaanddistricthistoricalsociety/
Winchelsea Wildlife Shelter	www.winchelseawildlifeshelter.com/
SCARS - Surf Coast Animal Rescue Service	facebook.com/groups/415211698950674
Winchelsea Gardeners	facebook.com/groups/779878518703025
Winchelsea & District Historical Society	facebook.com/Winchelseaanddistricthistoricalsociety/
Winchelsea Repertory Society Inc	facebook.com/winchrep/
Winchelsea Globe Theatre	facebook.com/Winchelsea-Globe Theatre-164790897641678
Winchelsea Uniting Church	facebook.com/winchelseaunitingchurch
St Thomas' Anglican Church	facebook.com/StThomasWinchelsea
St John the Baptist Catholic Church	facebook.com/pages/Winchelsea-Catholic-Church/101775670163180
Winchelsea Mainly Music	facebook.com/groups/668500343953191/
Winchelsea Health Club	facebook.com/WinchelseaHealthClub
Winchelsea Playgroup School terms only. Contact Danni 0432 019 944	facebook.com/groups/551663435367031
Winchelsea Girl Guides	www.guidesvic.org.au/
Winchelsea/Modewarre Scouts	facebook.com/1stModewarreScouts
Winchelsea Fire Brigade	facebook.com/winchelseafirebrigade/
Winchelsea SES	facebook.com/groups/WinchSES
Country Women's Association - CWA Winchelsea	facebook.com/pg/CWAWinchelsea/
Winchelsea Bowls Club	facebook.com/Winchelsea-Bowls-Club-533783333344345/
Winchelsea Blues Cricket Club	facebook.com/groups/8999049476/
Winchelsea Blues FC	facebook.com/WinchelseaFNC/
WYLD Winchelsea Youth Leisure and Drop in	facebook.com/groups/569737570027065/
Lions Club of Winchelsea	facebook.com/LionsWinchelsea
Winchelsea Probus	facebook.com/893535194971083
Winchelsea Golf Club	facebook.com/winchelseagc/ facebook.com/groups/1324943804676697



Winchelsea Community House Inc. A6247K
 28 Hesse Street, Po Box 75, Winchelsea, Vic. 3241
 Phone: 5267 2028 Email: manager@winchhouse.org.au
 ABN: 48 932 340 254

Expressions of Interest
**CLEANER REQUIRED:
 WINCHELSEA SHIRE HALL**

Winchelsea Shire Hall invite interested cleaners to submit a letter of application for cleaning services of our Shire Hall located at Winchelsea.

2 hours clean per week (min),
 and additional cleaning as required/requested.

You must provide:

- Australian Business Number (ABN)
- Public Liability Insurance
- Substitute cleaner/s to cover periods of leave.
- Proof of Australian Citizenship or a current work visa to work in Australia.
- Hourly rate of pay

Please direct enquiries to Wendy Greaves
 E: manager@winchhouse.org.au Ph: 5267 2028

Please forward your application letter via email to manager@winchhouse.org.au outlining and confirmation of the above requirements



**Winchelsea Girl Guides
 Help Needed Please**

Are you interested in joining an enthusiastic, self-motivated team working with girls, 5 - 15 years?

The Winchelsea Girl Guides are seeking female adult volunteers.

We are losing our lovely Unit Helper Teresa, who is moving to Geelong, and to comply with adult child ratios we need to recruit more helpers.

Come and help us provide a stimulating program giving leadership development opportunities for girls, as well as providing fun and friendship.

You will need -

- Police Check clearance (provided by Guide Centre)
- Working with Children Check (free when working as a volunteer)

Phone Yvonne 0448 672630

Waurm Ponds Memorial Reserve Service



Thomas Welsh

The Waurm Ponds Memorial Reserve Committee is set to host its annual memorial service on Sunday July 7th, marking the 105th anniversary of the Avenue of Honour planting.

Located on the corner of Cochranes Road and Waurm Ponds Drive (Former Princess Hwy), the service will serve as remembrance of all Australians past and present who have served in the Australian Defence Forces.

Starting at 10:30am, the service will witness the participation of various local groups, including ADF cadets, the Geelong Memorial Brass Band, and the Geelong RSL Pipes and Drums. Mr Darcy

Dunstan, a former SAS veteran and vice president of the Torquay RSL Sub Branch, will be among distinguished guests.

Before the service begins, veterans and ADF cadets will march into the Reserve. Past and present Servicemen and Servicewomen are invited to participate in the march. Following the service light refreshments will be served at the Waurm Ponds Hall.

The plaques at the Memorial Reserve list the names of the Waurm Ponds servicemen and servicewomen including servicemen from the Winchelsea district.





Café La Hoot

have you tried
'owl' coffee?

1 willis st. cafelahooot@gmail.com 0407 528 999

TRENCHES & HOLES PTY LTD.



PHILLIP ROBERTSON

☎ **0427 672 945**

WINCHELSEA

- General Earth Works
- Driveways
- Trencher
- Kanga Loader
- Grader
- Excavator Work (3.5 & 6.5 Tonne)
- Tip Truck
- Rock Breaker
- Post Holes & Shed Footings

A.B.N 74006896898

WAZZA'S
WATER CARTAGE

Stainless Tanker Up to 22,000 ltr loads
Barwon Water Registered

Domestic & Rural Water Supplies

Call Wazza
Mob: 0428 877 260
Email: wazza@wazzas.com.au Web: wazzaswater.com

M & L DRAYTON PLUMBING SERVICES

REG No 24356 C/A No C02594

- Domestic and Rural Plumbing
- Roofing
- Sewerage & Septic
- LPG & Natural Gas Connections
- Motorised Drain Cleaning
- Backhoe Hire

Phone Mark 5288 7244
PO BOX 98 WINCHELSEA 3241
Mobile 0428 520 142



- DECKS - SAUNAS
 - FLOORING - PERGOLAS
 - WEATHERBOARDS
 - HORSE SHEDS
 - CLADDING - FENCES
- ALL THINGS TIMBER AND MORE...

INSTAGRAM guim_designs

CALL PAT ON

0401 232 674



The Climate Report

Judy Cameron

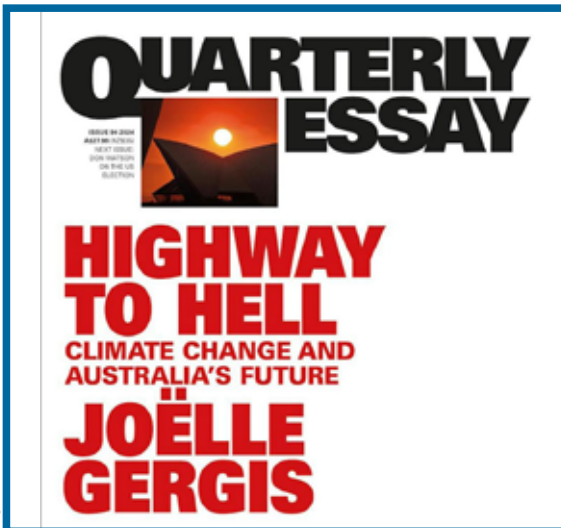
Joëlle Gergis is the Honorary Climate Research Fellow, School of Geography, Earth and Atmospheric Sciences at the University of Melbourne. She has written the latest Quarterly Essay “Highway to Hell: Climate Change and Australia’s Future”

I list here some take outs from her article in The Conversation.

• Even a cursory look at the latest figures released by the United Nations Environment Programme (UNEP) shows that the situation we are facing is extremely serious. The 2023 Emissions Gap Report – subtitled “Broken Record: Temperatures hit new highs, yet world fails to cut emissions (again)” – explains that, even in the most optimistic scenario, the chance of limiting global warming to 1.5°C is just 14%.

• As the driest inhabited continent on the planet, Australia is particularly vulnerable to climate change. Our nation is a huge island surrounded by the Pacific, Indian and Southern oceans, resulting in dramatic swings in our weather. You can think of Australia’s background climate as essentially a tug of war between warm tropical influences from the north and cool temperate systems from the south.

• To add to the complexity, the landmass of Australia stretches from the tropics in places like Far North



Queensland to the temperate mid-latitudes of Tasmania, generating an enormous range of climate zones that sustain rainforests, coral reefs, deserts and alpine environments. This is why we can have tropical cyclone conditions, extreme heatwaves and bushfires happening at the same time across the country, challenging emergency services.

• Australia is also the flattest continent on Earth, meaning that weather systems can travel vast distances without being tripped up by rugged terrain, unleashing destruction over large areas.

• When weather systems collide with mountains, there can be rapid uplift of air masses, leading to atmospheric instability that can result in severe thunderstorms and torrential downpours that trigger flash flooding and destructive winds.

• Because of the presence of oceans,

mountains, glaciers and forests, different areas of the Earth warm at different rates. The geographical characteristics of Australia mean that the continent is warming faster than the global average – temperatures have risen by 1.5°C since 1910, compared with the 1.2°C global increase since pre-industrial times.

• As global warming continues, Australia’s climate is fast becoming more extreme and unpredictable, edging us closer towards breaching thresholds that will make it very difficult, if not impossible, to adapt to.

• We see the continued degradation of our natural environment and the weakening of social resilience that will eventually lead to the permanent displacement of people from their homes and ongoing impacts on our economy.

• Scientists know the situation is very bad, but we also know exactly what we need to do to stabilise the Earth’s temperature and avoid triggering a domino effect of impacts in other components of the climate system. If we don’t put the brakes on industrial emissions immediately, children alive today will inherit this nightmarish future.

Joëlle said “It makes me wonder if people in decades to come will look back at the world’s collective failure to shut down the fossil fuel industry in time and see it for what it really is: an intergenerational crime against humanity.”



We are hiring at our Winchelsea branch!!
We are looking for a receptionist/vet nurse hybrid for our Winchelsea consult clinic.
Monday 3-5pm, Wednesday 8:30am-11:30am,
Thursday 11am-3pm
Some reception/nursing shifts at our redesigned Colac premises may also be available too.
Applications: rhondacolbourne@colacvet.com.au

Now Hiring!!!
Winchelsea Branch



SERVICES & ACTIVITIES

WINCHELSEA

VLINe TRAIN SERVICES

TO MELBOURNE:

Mon - Fri 6:41 am, 7:57am, 11:14am, 2:08pm, 7:23pm
 Sat - Sun 9:26am, 1:30pm, 7:18pm

TO WARRNAMBOOL:

Mon - Fri 8:56am, 11:55am, 2:50pm, 5:27pm,
 6:45pm, 8:50pm
 Sat - Sun 8:47am, 2:46pm, 8:34pm



COUNTRY WOMEN'S ASSOCIATION

7pm second Wednesday of month
 Winchelsea Senior Citizens' Hall



WINCHELSEA SES

Every Wednesday
 Visitors and inquiries welcome
 0408 102 802

Winchelsea and District COMBINED PROBUS CLUB



Senior Citizens Rooms,
 Harding St, Winchelsea.
 New members always welcome.
 Enquiries Linda 0439 817 263.



SOCIAL BRIDGE

Every Tuesday 10.30 am - 1.00 pm
 Senior Citizens Centre
 36 Harding Street Winchelsea
 New players always welcome
 Contact Elaine Atkinson 0458009616

WINCHELSEA TRANSFER STATION 55 Cressy Road, Winchelsea

Tuesday	2pm-4pm	Saturday	1.30-3.30pm
Thursday	2pm-4pm	Sunday	9.30-12.30pm

All waste disposal sites are closed on Christmas Day,
 but open on other public holidays that fall
 during their normal operating hours.

www.surfcoast.vic.gov.au/disposalsites



WINCHELSEA GIRL GUIDES

Our Unit meets at the Catholic Church Hall,
 Harding St Winchelsea each Monday 4.30pm-6pm
 All girls 5yrs- 15yrs Welcome!
 Contact Yvonne Orchard 0448 672 630
 or Emily LaPorte Phone 0476 719 381



1st Modda & 1st Winchelsea

SCOUT GROUP

Joey's: Tuesdays of school term 5-6pm
Cubs: Mondays of school term 6:30-8pm
Scouts: Tuesdays of school term 6:30-8:30pm
 All at Modewarre Hall, Cape Otway Rd
Venturers: Wed at Walton's Rd Venturer Den
 Contact Marie McPadden 0409 330147



BUS TO THE HUB

For reservations on the weekly bus
 to the Eastern Reserve Hub,
 please phone 52671202.

SURF COAST MOBILE LIBRARY

Hesse St, Fridays, 2pm-5pm
 Surf Coast Mobile Library
 parked in Hesse Street (outside Shire Hall)
 Fridays 2:00 and 5:00pm unless it is a Public Holiday.

WINCHELSEA TAXI

0429 672 888 or 5267 2888
 Wheelchair accessible
 10 seater bus available.

WINCHELSEA PLAYGROUP

Every second Thursday 10am-12pm
 St Thomas Anglican Church Hall
 cnr Barwon Tce and Hopkins St, Winchelsea
 Contact: Danni Menzies 0432019944
winchelseaplaygroup@gmail.com
 Facebook - Winchelsea Playgroup 2019
New families welcome

Changes coming from 1 July for assessments for in-home care

Following the Australian Government changes to aged care, the Surf Coast Shire Council is no longer able to deliver in-home assessments of people seeking Commonwealth Home Support Program services.

From 1 July the Regional Assessment Service will be carried out by government-appointed contractors.

People seeking assessment should contact My Aged Care to be connected to one of the new providers.

“We appreciate this might be an adjustment for some people, but the change is part of national aged care reforms and it seeks to streamline assessment services,” Cr Gary Allen said.

“Assessments will continue, and we encourage people to work through My Aged Care as a first step with any inquiries or to connect with support.

“The Council will be providing some assistance to help ensure that the transition goes smoothly.

“While we can no longer deliver assessment services, the Council has introduced a new Aged Community Connector Officer role to help people navigating the new arrangements during the next 12 months.

“The Council will also be continuing to play a key role in supporting people to age well in the place where they live, through implementation of our Age Friendly Strategy.”

Following the Australian Government changes to delivery of aged care, the Council resolved in 2019 to adopt a Positive Ageing Reform Readiness Plan which included five actions.

Transition away from delivery of Regional Assessment Service is the last of the five actions to be undertaken.

People can contact My Aged Care via 1800 200 422 or myagedcare.gov.au



TORQUAY MAINTENANCE
Jared 0438804227
Landscape Construction
Renovations
Garden & mowing services
General Maintenance

admin@torquaymaintenance.com.au Instagram : @torquay_maintenance



Healthy spine, Healthier life

Dr Joel Grist
B.App.Sci.(Clin.Sci), B.Chiro.Sci

Ph (03) 5231 5594

50 Murray St, Colac, 3250
www.colacchiro.com



**KEEP THE FIRE BURNING!
BLAK, LOUD AND PROUD**
7-14 JULY 2024

Spirit in Surfing

Join us for an inspiring panel event to celebrate NAIDOC - a conversation amongst friends who will share their cultural journey and deep connection to sea country through surfing.

Facilitated by: Jodie Sizer CEO GORCAPA

Panel: Corrina Eccles, Jordie Campbell, Jessi Rebel and Anthony Hume

Location: Australian National Surf Museum
77 Beach Rd Torquay (enter through carpark)

Date: 10 July 2024

Times: Doors open 5:30pm, Event 6-8pm

Booking essential:
events.humanitix.com/naidoc2024-ansm



Your glass bin is for bottles and jars only.

Keep these items out of your glass-only bin:

- food, liquid or cigarette butts inside bottles or jars
- lids and caps for bottles and jars - put metal lids (including aluminium) in your recycling bin
- other items made from glass like light bulbs, pyrex, drinking glasses, mirrors and vases
- ceramics and crockery
- plastic or paper bags and cardboard boxes.

Help your bottles and jars become new again by recycling correctly in your purple bin.

Your small acts make a big impact.

Find out how at surfcoast.vic.gov.au/glass



Placemaking for the Future

Urban Futures Strategy



Surf Coast Shire Council has developed an important placemaking project to guide future land-use planning at the township and precinct level.

Council is seeking community feedback on the draft Urban Futures Strategy **until 26 August 2024**.

Urban Futures Strategy

The draft Urban Futures Strategy provides principles and directions to guide sustainable urban growth whilst considering a range of constraints, including the need to protect natural environments and significant landscapes.

In responding to forecast population growth, the Strategy recommends and prioritises strategic work to ensure an adequate supply of land to meet future housing and employment needs.

To view the draft Urban Futures Strategy and supporting documents, and to find out more information please scan the QR code above or visit yoursay.surfcoast.vic.gov.au/UFS. An online submission portal is also provided at this link.

How to get involved

Community members are invited to attend an informal information session to explore the key principles and directions in the draft Urban Futures Strategy with the project team.

Drop-in information sessions:

TORQUAY

Wednesday 17 July 2024, 4pm to 6pm
Council Chambers, 1 Merrijig Drive, Torquay

WINCHELSEA

Thursday 18 July 2024, 4pm to 6pm
Winchelsea Hall, 28 Hesse Street, Winchelsea

Please feel free to drop in at your convenience during the session times.

For further questions or enquiries, please contact us on **(03) 5261 0600** or at info@surfcoast.vic.gov.au.

surfcoast.vic.gov.au



Barwon Water Tower art unveiled

Barwon Water was thrilled to join members of the Cressy & District History Group, Eastern Maar Traditional Owner Paul Kelly, funding partners, artist Tim Bowtell, community members and Beac Primary School students to celebrate the launch of the Cressy Water Tower mural and unveil the interpretive signage.

Barwon Water was delighted to have provided the canvas for this excellent project and we congratulate the history group on instigating and driving it. Public art projects help invigorate small towns and communities and they hope this one generates pride in Cressy.

The tower can be found on New Station Street. Barwon Water highly recommend visiting to see it for yourself and learn about the project behind it.



From left: Colac Otway Shire Councillors Chris Potter and Tosh-Jake Finnigan, Cressy & District History Group President Robyn Alexander, Artist Tim Bowtell, Barwon Water Managing Director Shaun Cumming and Golden Plains Shire Mayor Brett Cunningham.

FYI - catchments are recording significantly lower than average rainfall in the past three months, with rainfall 35% below average at Mt Sabine (Upper Barwon) and 69% below average at Lorne.

GRANTS

Quick Response Grants Now Open

• Grants Up to \$3,000

(Applications are assessed on a monthly basis until the allocated annual budget is exhausted)



Call grants team on **5261 0600** to discuss your idea and ask any questions.

Scan the QR code to find out more.



surfcoast.vic.gov.au/Community/Grants/Quick-Response-Grants



WINCHELSEA GRANDSTAND



Memorial Grandstand Eastern Oval Winchelsea.

WINCHELSEA HISTORICAL SOCIETY

Hesse Street Cnr Princes Highway Winchelsea 3241

OPEN Wednesdays 1 - 4pm Fridays 10 - 3pm

Sandra Jones

Overlooking Eastern Reserve the grandstand was erected in 1923 as a functional memorial to the people of Winchelsea and district who served in the armed services in the First World War. The brick and metal gates were built in 1952 to commemorate the men and women in World War Two at the most prominent sports reserve in town. It was built by funds raised by public donation, incorporating the RSL under the grandstand seating.

A local business group constructed the grandstand in a shed

in Hesse Street using the Knitlock system patented by Water Burley Griffin in 1917.

It is of architectural, historical and social significance to the state of Victoria and as an example of the use of the Knitlock system of construction.

A number of tiles are in the possession of the Winchelsea Historical Society.

It still contains the RSL club rooms and the ground is used for sporting activities.

It is now listed on the Victorian Heritage Register.



Join Us in Empowering Winchelsea's Youth

by Tony Phelps, Winchelsea Community House Chair

Photos sourced from WYLD Facebook page

Last week, Winchelsea Community House put out the call for community-minded volunteers in Winchelsea to form a group which will investigate a youth hub, one of the priority projects identified by Winchelsea residents during the Community Action Plan project in 2023. Whether you're a parent, a young adult, or simply passionate about our community's future, your involvement is crucial.

Why the Youth Hub Matters

The "Community Action Plan" for Winchelsea has highlighted the need for a youth hub as a top priority. This isn't just any space—it's a vibrant, safe environment where young people can gather, learn, receive support, and even launch their own projects. It's set to be a cornerstone of energy and creativity right here in our town.

How You Can Help

Winchelsea Community House is forming a project team of volunteers to see if we can bring this youth hub to life. You'll help determine what the hub will look like, what resources it needs, and how to secure those resources. Your insights and passion will drive this project forward.

No special expertise is needed—just a genuine desire to enhance our community. Whether you're a student, a parent, a local business owner, or someone who cares about our youth, there's a place for you in this project.

Benefits of Joining the Project

Imagine the pride of knowing you played a key role in creating a space where our youth can flourish. This project isn't just about having a dream—it's about realising that dream. Together, we can provide our young people with the opportunities, support, and a welcoming place they can call their own.



Our Goals

Our aim is to establish a fully operational youth hub in Winchelsea with sustainable funding and resources for at least three years.

As a part of the project group, you won't be managing the hub. Instead, you'll be crucial in setting the foundation for its success. From brainstorming sessions to community consultations, your input will influence every aspect of the hub, from its design to its programs.

Get Involved Today

Are you ready to be part of something different? Join us in creating a youth hub that Winchelsea can be proud of. Whether you have innovative ideas, organisational skills, or simply a willingness to help, your contribution is invaluable.

Let's work together to make Winchelsea a place where our youth feel supported, inspired, and ready to conquer the world.

If you'd like to help, however that works for you, please contact Tony via chair@winchhouse.org.au

Did You Know?

We have a youth group already, under the auspices of Winch House. The WYLD group (Winchelsea Youth Leisure Dropin) have kicked some big goals under the guidance of Monique Jacques and Robyn Black. WYLD's experience and knowledge will provide high-quality input into what may or may not work in Winchelsea.

Our community has called for a youth hub. Now it's time to make it happen! Email chair@winchhouse.org.au if you'd like to be part of that.



Time To Enrol In Kinder For 2025

Kindergarten is vital for the best start in life and the Allan Labor Government is encouraging families to enroll their children for 2025.

Minister for Children Lizzie Blandthorn today reminded parents many kindergartens close enrolments for next year on 30 June and now is the right time to enroll their children.

In Victoria, 97 per cent of funded kindergarten services are participating in Free Kinder - ensuring around 140,000 children each year can go to kinder at no cost – saving hard-working families up to \$2,563 in fees per child per year.

Children attending Three-Year-Old Kindergarten receive 5 to 15 hours of play-based learning each week, while those in Four-Year-Old Kindergarten receive 15 hours weekly.

Victorian families have embraced Three-Year-Old Kindergarten, with approximately 89 per cent of eligible children participating last year. Now, thanks to record investment and take-up across the state, more than 80 per cent of kindergarten services are offering a full 15-hour-per-week program – well ahead of the roll-out schedule.

For the first time next year, children in the local government areas of Ararat, Gannawarra, Hindmarsh, Murrindindi, Northern Grampians and Yarriambiack will be the first to enroll in Pre-Prep.

Led by qualified teachers, Pre-Prep provides children with more hours of quality play-based learning in the year before school. As the roll-out

progresses, four-year-old children are eligible for 16 to 30 hours of kindergarten each week.

At kinder, qualified teachers and educators guide children's learning, encouraging them to use their imagination and make discoveries while listening, sharing and working with others. Children also learn about numbers, words, and language, and develop social and emotional skills, building key skills for life.

Research shows that play-based learning is a powerful way to support a child's development. Two years of quality kindergarten have a greater impact on children who start at three rather than four. The benefits are even greater for children needing extra support.

Families can find kindergarten services near them by contacting their local council or visiting vic.gov.au/kinder.

**SEEKING
VOLUNTEERS!**



**Winchelsea
Community
Foodbank**



The Winchelsea Community Foodbank is looking for some friendly faces to volunteer. If you have a few hours available on a Friday and are keen to help, we'd love to hear from you!



For more information contact Hannah
healthpromotion@hesse.vic.gov.au
0417 848 292

Corella Management Plan for Winchelsea

by Cr Adrian Schonfelder

Council has a successful DEECA Corella management grant funding application of \$45,375 to trial novel and non-lethal management approaches in Winchelsea township.

Background

- Cockatoos (Long-billed Corellas, Little Corellas, Sulphur-crested Cockatoos and Galahs) move into Winchelsea during summer and autumn in very large numbers mainly due to the reliable water source (Barwon River) and suitable roosting vegetation.
- The increase in local cockatoo populations around Winchelsea is attributed to broadscale changes in farming practices from grazing to cereal cropping.
- Cockatoos have increased their population and range across Victoria over the past 30 years, and they are now common in many rural towns and urban areas of Melbourne.
- The Victorian Government (DEECA) released its new Victorian Corella Strategy last year promoting a 'living with wildlife' approach to encourage positive attitudes to Corellas and to encourage community-owned solutions and improved management of the impacts of Corellas.
- Grant funding of \$250,000 was recently made available by DEECA in alignment with its Strategy to address agricultural, infrastructural, environmental, and social impacts of Corellas on community.



Photo by Tony Phelps

Issues

- The Winchelsea community has expressed their frustration with the increasing numbers of Corellas within the township. Concerns raised by the community include:
 - ◇ impact on human health from the noise and presence of bird faeces/feathers
 - ◇ aesthetic impact (stripping of the tops of trees, increased leaf litter on the ground)
 - ◇ impact on the health of the trees from Corella pruning, in particular the exotic tree species.
- Short term control actions like scaring, loud noises, and flashing lights are inappropriate for a town-setting and do not provide a long-term solution to the problem.
- In consultation with Growing Winchelsea and the Arboretum Trail Group, Council Officers developed a trial project that suits the nature of the urban/township environment and is sustainable into the future.

Current Status

- The grant funding of \$43,375 is for the "Trial in flight, long-term collaborative corella deterrence strategy" project which focuses on a long-term strategy of:
 - ◇ o Habitat renewal, modification,

and replacement at a key roosting site along the Barwon River (on either side of the main bridge); and

- ◇ o trialing the installation of a Peregrine Falcon nesting box within the river valley. Research has shown that Peregrine Falcons prey on Corellas and their presence deters roosting flocks.
- The project will be delivered by Council's Environment & Open Space teams in collaboration with Growing Winchelsea, the Arboretum Trail Group, and Winchelsea Land & Rivercare.
- The grant project will run for 14 months. Beyond the life of the project, the landscape plan (which is part of the project delivery) will be implemented by Council over a period of 5 years and will be integrated into future urban forest strategic work.

Next Steps

The project begins in July and will be delivered by Council Officers in three main stages across the 14 months working in partnership with Growing Winchelsea and the Arboretum Trail Group. Initial works will include some habitat modification of large roosting trees and producing a landscaping concept plan for community consultation.

MRP

Steelworx

Matthew Partridge

p 0418 672 334

e mrpsteelworx@yahoo.com.au

Welding Service

- Onsite welding
- Farm maintenance
- Farm machinery & equipment repairs
- Cattle & sheep yards
- Custom built trailers
- Supply & install gates



5234 6585 0417 385 984

For all your domestic & stock water.
Also available for road and civil construction
Local owned and operated.

52672192 R & K Creative Framing
for all your framing needs

free quotes
pension discount
specialist in Age & Disability Modifications

Ray & Kim Jansen
10 Witcombe st
Winchelsea 3241

Ray The Home Maintenance HANDYMAN
abn 47929623462

0414672192



Winchelsea Supermarket

Trading Hours

Monday to Saturday

8.30am to 7.30pm

Sunday

10am to 7pm

Ph: 5267 2676
29 Main St, Winchelsea

Antique Repairs

By **Doug Burns** est. 1976

- All Furniture
- French polishing
- Carving
- Veneering
- Wood Turning
- Porcelain



Unusual Requests Welcome

180 Barwon Terrace, Winchelsea

0428 672 704

All About **Mowers & Chainsaws**

Repairs to all makes and models of ride on mowers, domestic mowers, pumps, chainsaws, brushcutters and small engines.

Trading Hours: Mon - Fri 8am - 5pm Saturday 8am - 12 noon

5267 2266 Cnr Princes Hwy & Lennox St Winchelsea

www.allaboutmowers.com.au
accounts@allaboutmowers.com.au

FERRIS COX STIHL BRIGGS & STRATTON VICTA



SOUTHERN GRAIN STORAGE PTY. LTD.

AG SUPPLIES FERTILISER GRAIN STORAGE SEED CLEANING

(03) 5267 2351

WINCHELSEA CONCRETING

• Driveways • Sheds • Decorative Concrete • Raft Slabs

Robert Murphy

☎ 0438 235 237

✉ winchelseaconcreting@outlook.com

Winchelsea Men's Shed



For The Community

Men's Shed Kindling/Offcuts
Bags of Kindling/timber offcuts
are available for pick up from
the Men's Shed on Wednesday's
from 9.30 to 2.30.

If you need a delivery made you
can call Bill on 0438 083 373.
The price for a bag of kindling is
now \$7.00 (up from \$5.00).

Nesting Boxes

Bird or animal nesting boxes are
available from The Men's Shed.

These can be made to order.

Call in on any Wednesday
to have a chat.



Invitation

The 2024 Upper Barwon Landcare Dinner & Annual General Meeting - Rescheduled

When Monday July 22nd 2024

Where Colac Bowling Club, 35 Moore St Colac

Program 6 PM – pre dinner drinks (*drinks available at bar prices*)

6.30 PM – Annual General Meeting

7 PM – Dinner (Fusion catering) with Guest Speaker between courses
(\$40 a head / pay on registration)

Guest Speaker: **Silvana Lannello—Speleologist (cave ecologist)**



Silvana will present her work as a Speleologist and discuss the hidden world of caves within the Corangamite Catchment and what lies beneath. By day, Silvana serves as an Environmental Land Manager in the Corangamite Catchment, but her true passion lies beneath the surface. Since 2009, she has dedicated herself to the study, exploration, and conservation of subterranean ecosystems, with a particular focus on cave crickets and other small cave-dwelling creatures.

Silvana's work has led her to the discovery of a previously unknown cave cricket species in Victoria and the mapping of numerous new caves across Australia. Her work not only expands our scientific knowledge but also demonstrates the importance of preserving these hidden worlds.

Beyond her research, Silvana advocates for cave conservation. Her short film, "Adapted to the Dark," won first prize in Australia's 2021 Year of Caves and Karst Creatives Competition, shedding light on cave crickets and the importance of cave ecosystems to a wider audience. More recently, in 2024, Silvana produced "On the Line: Nullarbor," a film highlighting the significance of the Nullarbor Plain and advocating for its protection against industrialisation giants.

In addition to her caving pursuits, Silvana holds leadership roles in key organisations dedicated to speleology. As Vice President of the Australian Speleological Federation and President of The Australian Cave Animal of the Year project.

This year, 2024, we celebrate the Nullarbor Blind Cave Spider, *Traglodiplura* genus as Australia's Cave Animal of the year.

Bookings are essential

Please RSVP by the **15th of July** with any dietary requirements.

Use the booking link or barcode to register.



<https://events.humanitix.com/copy-of-upper-barwon-landcare-agm>

Any enquires please contact Andrea Montgomery on 0407552663

or

andrea.upperbarwonlandcare@gmail.com

COMMUNITY MEMBERS WELCOME



Winchelsea Community House and Shire Hall

Hours: Monday-Friday 9.00am -2.00pm

Address: 28 Hesse Street, Winchelsea

Phone: 52672028

www.winchhouse.org.au

Email: reception@winchhouse.org.au

Term 3 – 2024

We will still be in the office over the school holidays for anything you might need.

Occasional Care will still be operating as normal.

<p style="text-align: center;">Singing Group</p> <p>When: Wednesday Afternoons 4.45pm -6pm (During School Terms)</p> <p>Date: 17th July 2024</p> <p>Where: Winchelsea Shire Hall Space</p> <p>Cost: \$7.50 per session</p> <p>Under 16 Free</p> <p>Bookings: reception@winchhouse.org.au</p>	<p style="text-align: center;">Crochet Group</p> <p>When: Alternate Saturday Afternoons 1.30pm</p> <p>Date: 13th July 2024</p> <p>Where: Winchelsea Community House Space</p> <p>Cost: \$5.00 per session</p> <p>Bookings: reception@winchhouse.org.au</p>
<p style="text-align: center;">Chatty Café</p> <p>When: Friday Mornings 10.30am - 12 noon</p> <p>Date: 5th July 2024</p> <p>Where: Winchelsea Shire Hall Space</p> <p>Cost: Donation Tin</p> <p>Bookings: no bookings required</p> <p>Chatty Café Volunteers will be present to welcome you!</p>	<p style="text-align: center;">Knitting Group</p> <p>When: Thursday Mornings 10.30am - 12 noon (During School Terms)</p> <p>Date: 18th July 2024</p> <p>Where: Winchelsea Community House Space</p> <p>Come along and learn to knit or bring your knitting project while having a chat with others!</p>
<p>Certificate III Individual Support</p> <p>Expressions of Interest are now being taken. Approx. 13 hours per week - face to face over 2 consecutive days for around 36.5 weeks plus 120 hour placement.</p>	<p>Certificate III Early Childhood Education & Care</p> <p>Expressions of Interest are now being taken. Approx. 13 hours per week - face to face over 2 consecutive days for around 40 weeks plus 160 hour placement.</p>
<p style="text-align: center;">Tai Chi</p> <p>When: Friday Mornings 9.00am - 10.00am (During School Terms)</p> <p>Date: 19th July 2024</p> <p>Where: Winchelsea Community House</p> <p>Cost: \$10 per session</p>	<p style="text-align: center;">Sound Healing</p> <p>When: Wednesday</p> <p>Date: 3rd July, 2024</p> <p>Where: Winchelsea Shire Hall Space</p> <p>Cost: \$40 per session</p> <p>Bookings: Call Vicki- 0400 146 749</p>

Community Houses such as ours provide programs and activities to learn new skills, brush up on your existing skills and more than anything to connect with others in your community and reduce social isolation.

New skills may help you with employment and build your confidence to in turn help others.

Activities such as singing and sound healing help your mind and reduce any unwanted stresses.

Have a think about doing something for yourself and join in our activities.

Winchelsea Churches



St John's Catholic Church

Father Joseph Panackal
0404598558

Harding St, Winchelsea 3241

MASS TIMES

5pm Sat. June 22, 29

July 6, 13, 20, 27

St Thomas' Anglican Church

Rev'd Phil Jacobson
0477 672 042
stthomaswac@gmail.com
Barwon Tce, Winchelsea
Service 10am

Winchelsea Uniting Church

0475 777 301
uca.winchelsea@gmail.com
Hesse St, Winchelsea 3241
Services 9.30am Sundays

Thought for the Week

"Don't be afraid to go your own way and forge your own path. You don't have to follow the same path that someone else has tread And regardless of the path you have made for yourself God will be with you every step of the way."

John Bader,
Former U/C Accredited
Lay Preacher

OZ TREES NURSERY & TREE PLANTING SERVICES

- Affordable seedlings—over 200 species
 - Complete plantation service—farm forestry, shelter, aesthetics
 - Deep ripping & mound ploughing. Rotary bed forming
 - Our experienced staff will help you select species for your site conditions and needs
- Also available—tree planting tools, milk cartons, plastic tree guards & bamboo stakes



569 Warrowie Rd. Colac
P: 5233 6280 F: 5233 6393
E: info@oztrees.com.au
W: www.oztrees.com.au
Open Monday—Friday
9am—4:30pm

Phone OzTrees for professional advice,

WINCH WEBSITES
WEB SOLUTIONS SIMPLIFIED.

WEBSITES

GROW business
INCREASE reach
SAVE time



Find out what a website could do for you

winchwebsites.com.au

04 887766 20

mels
DANCE CENTRAL
Est. 2003

Dance ENROLMENTS NOW OPEN!

Winchelsea
Dance Classes
REGISTER NOW

JAZZ - THEATRICAL TAP - HIP-HOP
CLASSICAL BALLET - CONTEMPORARY
Pre-School - Adults
Beginner - Advanced Levels

www.melsdancecentral.com.au

direct TEMPORARY FENCING

FOR HIRE - SUPPLIED & ERECTED - 7 DAYS
GEE LONG - BELLARINE - COLAC - SURF COAST
PHONE CAM 0417 310 800

DownRyte Excavations

- Excavations
- Drilling and Piling
- Rock Placement
- Tree and Stump Removal

Sean Hunwick
Mobile: 0409 447 288
Email: downryte@activ8.net.au

Netball News

Melody Philpott

Netball game day reports - Round 11, Saturday 29 June

U13s - Thomson 30 def Winchelsea 3

No report

U15s - Winchelsea 26 def Thomson 15

The U15's put on show all of the hard work they have put in at training. Elle Chittenden and Mila Tute provided strong, hard drives into our attacking third allowing ample opportunity to score. Esther Grimmer and Mia White both had accurate games under the ring.

U17s - Winchelsea 49 def Thomson 5

A brilliant display of netball today by our 17s moving up to 4th on the ladder. Captain Millie Partridge was a stand out with strength and leadership and the rest of the team followed. Our attackers Reani Mawson and Ash Bell combined well, giving Millie every opportunity to extend her lead in the league goal scoring. Abi Kuchenmeister was again impressive in any position. Looking forward to the challenge of ladder leaders Banno next week.

U19s - Bye

D grade - Winchelsea 41 def Thomson 16

The D grade Blues were aiming to continue their powerful run, the winner of this game guaranteed to go up the

ladder on the other. A 5-7 score at quarter time meant it was anyone's game. However, the dominating defence of Chrissy Noble and Emily Wilson all but thwarted Thomson's ladder climbing aspirations. This combination was so solid it remained unchanged for four quarters. Of course, the cheque is always better once cashed. Belinda 'Min' Czerniawski returned to the side this week, and reliably converted defensive gains to scoreboard earnings. The D grade Blues finished with a convincing 25 goal lead. They look forward to taking on more Tigers at Bannockburn next week.

C grade - Winchelsea 38 drew Thomson 38

This week's outing was an opportunity for the C grade Blues to test themselves against a Top 5 Thomson side. Last time these teams met in round one, Thomson got up over the Blues by two goals. The game couldn't have started any better for the Blues, jumping to a 13-5 lead at quarter time. The breathing space was short lived however, Thomson pushing forward with experience. The final quarter was one that the Blues will learn from (although it won't sting any less) - Thomson doubling the Blues' score haul in the final term. Despite every effort to hang on to a win, a penalty shot after the siren in the hands of Thomson sealed the fate of the Blues, levelling the score to an inseparable 38.

B grade - Thomson 39 def Winchelsea 32

B grade Blues began their game with authority, ahead of Thomson at the quarter and half time breaks. Thomson bought personality in defence, not appreciating Katrina Filice's superpower of turning opposition energy into performance. A bold lay up

ensued and the Blues lifted. Thomson did not hesitate to pass to their holding goalers. This was figured out by Izzie Ryan, who repositioned her defence constantly, nullifying the Tigers' attack. Sophie Lehmann once again stood tall against some aerial Thomson defence. The theme of the day - last quarters to forget - struck the B grade Blues late. Unrefined passes all but handed Thomson a 5-14 goal closing term, the Blues overrun at the final whistle.

A grade - Winchelsea 41 def Thomson 40

The breath holding, edge of your seat feelings continued for those following our A grade Blues - and what a game it was! These two sides notoriously match up well. The Blues faced a Thomson team out for redemption on the 15 goal margin which separated these teams in round 1.

In hindsight, the steady start and marginally outscoring the Tigers in the first half was crucial for the Blues. Gemma Stavenuiter and Rhi Williams were a defensive forcefield in the second quarter, Thomson almost completely denied access to their goal ring. Zoe Tennant again delivered a masterclass in the impact of a skilled Wing Defence.

It wasn't enough for the Tigers to roll over however, fighting back with some strategic positional changes and a surge of accurate scoring in the second half. Blues were forced to respond, and respond they did. Olivia Paatsch; a response in human form, this hot shot queen came to win. With 30 seconds to play, it was only fitting that the winning goal was from long range, off her accurate hand.

The Blues closed this thriller a single goal ahead of the Tigers.

We'd love to see you!

WINCHELSEA PLAYGROUP

Each Thursday during school terms.
Come along between 10AM - 12PM.

Check out our Facebook Page for more information about the happenings of each session.

Playgroup Leader - Danni Menzies

Email:
winchelseaplaygroup@gmail.com

St. Thomas's Hall,
27-29 Barwon Terrace,
Winchelsea VIC 3241

\$5 PER FAMILY
INCLUDES MORNING TEA & HOT DRINKS FOR CAREGIVERS

Scan to be part of our Facebook Group

Hiya Winchelsea Families,

My name is Danni and I am the Playgroup Coordinator for Winchelsea Playgroup.

We are so excited to share that as of Term 3, we are moving to a **weekly format** at St Thomas's Hall.

So now every Thursday morning between 10AM and midday we will have a Playgroup session.

For just \$5 per family, you will get some light morning tea and hot drinks for caregivers. Please bring a keepcup for your hot drinks, one with a lid that is not easily accessible for young children.

Each week we will have a wide variety of new toys, experiences and sensory play spaces for children to learn and explore.

We have been given some great opportunities through grants and fundraising to purchase some really great and exciting resources for the children. This includes a lightbox, soft play shapes, sensory tiles and more!

Our playgroup committee has been planning lots of great things, themed playgroups and more for Term 3, we hope to see you there!

We'd also love to invite community members to come along to showcase any special talents or hobbies that they'd like to share with us. If this is something of interest to you, please let me know by emailing us at winchelseaplaygroup@gmail.com

Our first session for Term 3, will be Thursday 18th July. Can't wait to see some new faces in our playgroup space.

Scott McDonald
0423 413 829

S.J.R AUTOMOTIVE
ABN 942 493 646 39
13 ALSOP DRIVE, WINCHELSEA VIC 3241

DAVIC AG

CONTRACTING AND EARTHMOVING

For all your harvesting needs
Mowing, raking, round bailing, paddock prepping, spreading and sowing

Call Dave on **0417 579 973** Bambra



- Domestic and Commercial hire equipment • Industrial welding gas
- Digging and Earthmoving equipment • New trailers and trailer repairs
- Firewood • Stockists of Royal Oil Lubricants products
- LPG for domestic and commercial requirements

Give Chris and the Team a call on 5232 1177 or email info@colachire.com.au

www.colachire.com.au

101 Wallace St Colac 3250



Green Lead Electrical
Connecting you to a greener future
REC 23618

0467 097 101



Servicing Geelong & the Surf Coast

Specialising in all residential electrical work including:

- Switch board & lighting upgrades
- Outdoor lighting
- Electrical safety checks
- Energy efficient LED lighting
- Ceiling sweep fans & ventilation
- Energy saving advice

Phone Martin Wilkinson:
0467 097 101
greenlead@outlook.com

1132268-CG-18-14



Water Supply Specialists

WATER SOLUTIONS

74 Dennis Street, Colac
5231 1861

ALL THINGS WATER:

- PUMPS - PIPES
- FITTINGS - TANKS
- POOL CHEMICALS
- IRRIGATION
- WATER PURIFICATION
- SOLAR - REPAIR

Facebook icon, Instagram icon, QR code

Funeral Planning
Working out what is best for you.

Prepaid Funerals, Funeral Bonds, Pay-by instalments...

There are many options and its important to make the right choice.

Alyson Burchell will be available by appointment to answer any questions about funerals and planning ahead.



For more information or to make an appointment contact Sue on 5221 4788

Tuckers Community Office,
Surf Coast Taxation Services, 22 Willis Street,
Winchelsea

**First Tuesday of the Month,
by appointment 10.00am - 12.00pm**

Caring for families since 1883

Tuckers
Funeral & Bereavement Service
for a life worth celebrating

5221 4788
www.tuckers.com.au



AlfordBuilt

*New Homes, Renovations, Extensions,
Bathrooms, Decks & Pergolas*

0408 583 362
stephen@alfordbuilt.com.au



REGISTERED
Building Practitioner

Lupton BUILDERS



SPECIALISING IN QUALITY




REGISTERED
Building Practitioner

- NEW HOMES
- ALTERATIONS
- CARPORTS
- BATHROOMS
- EXTENSIONS
- DECKS
- VERANDAHS
- WINDOW REPLACEMENTS
- RENOVATIONS
- PERGOLAS
- RE-GLADS

LEIGH LUPTON
0438 840 104

CHRIS LUPTON
0407 681 514

LEIGHLUPTON17@GMAIL.COM

Est. 1977



**Casuarina
Counselling Therapy**

Time For You

Counselling to help find clarity, understanding and new ways forward for relief from distress of all kinds, including anxiety, depression, addiction, relationship issues.

**Call 0493 988 150
to book appointment**

Available at The Exchange,
32-34 Main Rd, Winchelsea





Winchelsea Lions
 Environmentally friendly
 compressed paper bricks for your fire.
 Save on the rising cost of wood.
 Pack of 4 bricks \$5 - Roll of small rolls \$2
Contact Alan 0476 475 422



Mosaic Workshop

Winchelsea Community house

(Saturday and Sunday)
 17th-18th of August
 10:30 - 12:30 at Winchelsea house

\$90 for both sessions

Please bring wooden trays
 - Can be found at Variety store
 Mosaic tiles & Grout supplied

After each 2 hour session on the saturday or sunday, you bring home 2 beautiful mosaic trays. You can put these in your kitchen or living room.

Contact - Winch house to enrol and pay 5267 2028

Expression of Interest for a walking group in Winchelsea. Either a morning, afternoon, or NIGHT time walking group. Hoping to start as soon as possible.
 Contact bek 0466600524
 hoping at least 3 days during the week.



Join us at
 the Uniting
 book sale.

Nothing over \$1
 Children's books
 \$0.50!

Join us at our monthly book sale.

Held the first Friday and Saturday of each month at Uniting Grovedale, the Uniting book sale raises much needed funds for local services.

Friday 5th July
 &
 Saturday 6th July
 10am - 2pm

72 Torquay Rd, Grovedale
 Corner Reserve and Torquay Roads)

Uniting

Winchelsea Community Foodbank

Fridays, 12 - 2PM
 30-32 Hesse Street Winchelsea



Food relief for our
 community.

For more info, contact Hannah
 healthpromotion@hesse.vic.gov.au
 0417 848 292





WINCHELSEA CRICKET CLUB INC

NOTICE OF ANNUAL GENERAL MEETING 2024

70 Hopkins Street, Winchelsea, Vic, 3241

PO BOX 122, Winchelsea, Vic, 3241

EMAIL: winchelseacricketclub1858@outlook.com

Monday 29th July, 2024 at 7.30 p.m.

Members Room Eastern Reserve

NOMINATIONS are invited for all positions and must be lodged with the Secretary 2 days prior to the 29th July, 2024. Please show your support for your local Cricket Club and volunteer your services for the Executive and General Committee. **WE NEED YOU** to get involved and to ensure the continuance of our Cricket Club!

NOMINATION FORM

I _____ hereby nominate for the incoming Committee of Management for the Winchelsea Cricket Club season 2024/25 (tick the nomination position)

Name of Candidate		Candidate signature	
President	<input type="checkbox"/>	Secretary	<input type="checkbox"/>
Vice President	<input type="checkbox"/>	Treasurer	<input type="checkbox"/>
		Committee Member	<input type="checkbox"/>
		Junior Vice President	<input type="checkbox"/>

Nominated by _____

Seconded by _____

Completed nomination forms must be lodged with the Secretary TWO days before the Annual General Meeting. Email winchelseacricketclub1858@outlook.com or PO Box 122 Winchelsea, 3241.



R.A.K. DAVIS & SONS

CARTAGE CONTRACTORS

WINCHELSEA

SUPPLIER OF ALL QUARRY MATERIALS, TRUCK HIRE

CARTAGE OF GRAIN, LIME, GYPSUM & SUPER

LANDSCAPE & GARDEN SUPPLIES

56 WILLIS ST, WINCHELSEA

Ph – 5267 2094

Ryan – 0438 672 281

Email: rakdavis@bigpond.com



17 Alsop Drive

- ❖ LOG BOOK SERVICE
- ❖ AUTO ELECTRICAL
- ❖ TOWING
- ❖ AIR CONDITIONING
- ❖ CLUTCH & BRAKES
- ❖ TYRES
- ❖ WHEEL ALIGNMENT
- ❖ BATTERIES

CAR, TRUCK REPAIRS & Roadworthys

PH: 5267 3001

Mob: 0417 137 457

HESSE
RURAL
HEALTH

Volunteers Required

Volunteers are one of Hesse's greatest assets, playing a vital role to enhance the quality of Hesse services & client experiences.



- Bus Driver
- Outings Assistant
- Resident Visitor
- Events & Activities Assistant
- Group Wheelchair Walkers
- Appointment Escort
- Social Support Activities
- Gardening - Winchelsea
- Hospital Auxiliary Member
- Consumer Advisory Committee
- Marketing & Fundraising Committee

For more information please contact Hesse on (03) 5267 1200 or via email reception@hesse.vic.gov.au

GREAT Bundle Deal on Bosch Hot Water... FROM ELGAS

Buy any Bosch Bluetooth continuous flow hot water model - 16Litre, 20Litre or 26Litre and Receive \$100* in Elgas bonus LPG gas credits



From \$780 or \$32.50 per month

*For more details: www.elgas.com.au/appliances/bosch-continuous-flow-hot-water-sale

AND... for new customers, an additional \$80 WORTH OF LPG GAS CREDITS** when you open a new LPG Gas account with Elgas



**Further details can be viewed at www.elgas.com.au

Ask about the Elgas Easy Payment Plan - 12 months interest free*** on selected LPG appliances

***Further details can be viewed at: www.elgas.com.au/epp

Automatic tanker gas bottle refill OR gas bottle exchange refill is available for home or business...

Call today or visit our website for our many customer benefits and latest offers

131 161
www.elgas.com.au

ELGAS



SIMPLE STORAGE SOLUTIONS

- Personal & Business Storage
- Boat, Caravan & Vehicle Storage
- High Security Premises
- Individually Alarmed Units
- Electric Gate Access
- 7 Day Access & CCTV

YOUR STORAGE PROBLEMS SOLVED

5267 3116

6 ALSOP DRIVE, WINCHELSEA 3241

Wightons Lawyers

Dispute Resolution & Litigation

Debt Collection

Property Law

Wills & Estates

Powers of Attorney

Business Law

Family Law

By appointment only

22 Willis Street, Winchelsea
ph. 5221 8777

www.wightons.com.au





Located at 36 Main Street, Winchelsea 3241

For any enquires or bookings please contact the clinic on 5292 8028.
Or visit our website: www.winchmc.com.au

Opening Hours:

Monday - Friday 8:00am - 5.00pm
(Monday Evening Clinics available and selected Saturdays)



Our clinic accepts online bookings via the app called HotDoc.
Download the app on the App Store or Google Play or head to our website.

NATURAL GAS CONNECTIONS

M. & L DRAYTON PLUMBING SERVICES

YOUR LOCAL LICENSED

- **PLUMBERS (24356)**
- **GAS FITTERS**
- **GAS CONVERTERS**
- **CARBON MONOXIDE TESTING**

MARK 0428 520 142



Winchelsea and District

Ebony knows banking

If you need help with yours, you need to meet Ebony.

Ebony shares her knowledge of banking so you can achieve what you want from life.

And, she can meet you when and where it suits you; at the branch, over the phone, or via video call.

If you need help with your banking, call Ebony Berg, Loan Specialist on 5267 3189 or search Bendigo Bank Winchelsea.

bendigobank.com.au



Bendigo and Adelaide Bank Limited ABN 11 068 049 178, AFSL/Australian Credit Licence 237879. A1415950 OUT_33710515

Winchelsea Men's Shed



For The Community

51 Hesse Street

Every Wednesday from 9:30am

New members always welcome

**For more detail contact:
Ray Atkinson (Co-ordinator)
0407 839 139**

**or
winchmensed@gmail.com**

**Need a job done?
Woodworking jobs,
furniture repairs, small jobs.
Drop in and talk to us.**

HESSE RURAL HEALTH



- Acute Care*
- Urgent Care*
- Residential Aged Care*
- Community Nursing
- Dietetics
- Physiotherapy
- Occupational Therapy

- Diabetes Education
- Social Support Groups
- Counselling
- Home Care
- Health Promotion

* services from Winchelsea only

www.hesseruralhealth.com.au
P: (03) 5267 1200 E: reception@hesse.vic.gov.au





Blues News

Janet Fletcher

Welcome to Blue's News where there has been another very busy week at the Winchelsea Football & Netball Club. Football & Netball training continues to go well, the Auskick Season has drawn to a close and the Under 10's continue to improve every week.

Last Saturday the W.F.N.C. Inc. hosted Thomson Tigers Football & Netball Club, in wet and cold conditions.

All Players at the Winchelsea Blues wore black armbands in honour of Max Bushell. The Bushell family have strong ties with the Winchelsea Blues including grandson Riley playing today in the Senior side. All at the Winchelsea Blues wish to convey sincere condolences to Margaret, and all family and friends.

RESERVES:

Winchelsea Blues 7.8.50 defeated Thomson Tigers 7.7.49

In the opening round that matched Winchelsea with Thomson the Tigers led all day and won by 18 points. Last Saturday the tables were turned in a close tussle all day in the very slippery conditions with Thomson up at the first change, the Blues fighting back in the second quarter to lead at half time. Scores were level at $\frac{3}{4}$ time to set the scene for an exciting fourth quarter. The relatively small crowd were certainly kept on their toes as the final quarter wound down to find the Blues ahead by a point at the final siren. Go Blues!!

GOALS: Coby Eagle 2, Jack Todd 2, Lucas Brown 1, Baily Forssman 1, Tom Kennedy 1.

BEST: Luke Foot, Bailey Forssman, Jack Todd, Darcy Looker, Coby Eagle, Jaiden Eagle.

SENIORS:

Winchelsea Blues 15.11.101 were defeated by Thomson Tigers 17.12.114

Round 1 saw Thomson Tigers have a win after leading all match by 10 points

Saturdays result was another loss but what a difference

A point behind at $\frac{1}{4}$ time, in front at $\frac{1}{2}$ time, in front at $\frac{3}{4}$ time and be 2 goals up halfway through the last quarter surely the tables would be turn in the Seniors match as well but not to be.

In a very entertaining game of Senior Football Thomson kicked 2 late goals to take the 4 point against a shattered Blues outfit who had battled hard all day – just not able to hang on in the last 10 minutes of the game.

GOALS: Leigh Ellis 6, Jordan Gould 5, Fin Parish 1, Cass Parish 1, Caleb Brown 1, Tavae Sauni 1.

BEST: Leigh Ellis, Jordan Gould, Cassidy Parish, Shaun Morris, Bailey Kahle, Riley Berg.

This week the Blues will travel to Bannockburn for Round 13, which is part of a split Round in the G.D.F.N.L. season, the Blues will have a bye week following the Bannockburn game.

JUNIORS:

The under 10's were up early last Saturday to travel to Portarlington where they played very well but just couldn't show the results of their efforts on the scoreboard.

This group of young players continue to train well and are improving every week.

WINCHELSEA AUSKICK:

It was a very excited Auskick group that waited to run out at half time of the Senior game, the rain had drifted on and the Senior players formed a guard for the Auskick boys and girls to run out on to the ground. Cheered on by grandparents, parents, siblings and the crowd they made the most of their short time in front of everyone out on the oval.

After their game had finished it was time to feed hungry Auskick players with a hot dog roll and some drinks in the Bendigo Bank Room. Thanks to the large group of Senior players who arrived to present both medallions and certificates to the entire Auskick group.

2024 has been a great success for the Winchelsea Auskick group, this is thanks to the fabulous support from all the parents who dive the Auskick agenda, Pete, Wayne and Brad especially, also to Colleen Trehwella who has put in the hard yards over the last couple of seasons with all admin such as registrations etc. Colleen has gladly put in her time and effort to see such a great result and out come last Saturday. Well done everyone!

THE BLUE'S BISTRO:

A the time of going to print the menu for this week has not been confirmed, please check the Club's social pages for details later in the week. As many of the Blue's News readers will be aware there is some work to be carried out regarding the kitchen area, the Club is waiting to hear of a confirmed start date and this may effect our operating in the coming weeks, in the meantime it's business as usual this Thursday.

GO BLUES!!



Winchelsea Taxis is now Surfcoast Taxis

Our fleet of vehicles are growing to all late models and we are covering an extended area including Winchelsea, Colac, Bannockburn, Inverleigh, Great Ocean Road and Geelong.

We have a fleet of 10 seater Maxi Vans, all with capacity to carry wheelchairs.

Surfcoast Taxis Pty Ltd
All Bookings: 0408 325 992
Fax: 5267 2699
Email: bannotaxis@gmail.com
 (Admin or Stan 0429 672 888)
 66A Batson Street
 Winchelsea 3241



Accounts NDIS provider. TAC, DVA etc

NDIS provider number 4050001044
 NDIS provider number 4050001048

Book your next ride with **smartHAIL**

Book Track Pay Rate

Available on the App Store and GET IT ON Google Play

Winchelsea Star

ISSN 2202-6851



Since 1977

9177220216850021

WINCHELSEA LIONS CLUB

PAPER RECYCLING

Paper depot rear of Senior Citizens Rooms
 Harding Street
NEWSPAPERS, MAGAZINES, PHONE BOOKS WANTED



RAISING FUNDS FOR OUR TOWN & DISTRICT
 5267 2011 or 0408 520 606

M&B WOOD PLUMBING

Call Matt - 0418 319 357
mbwoodplumbing.au

Servicing Winchelsea & surrounds

- General maintenance & blocked drains
- Gas fitting & hot water service upgrades
- New homes & renovations

DEFIBRILLATORS IN WINCHELSEA

Accessible to the public 24 hours a day

The Winchelsea Lions Club has compiled a list of public access defibrillators in Winchelsea. We are lucky to have more available in town, but these are specifically **publicly accessible 24 hours a day**. If anyone knows any others that have 24 hour public access, please let Linda Carter know on 0439 817 263.



Bendigo Bank
11 Main Street



Ambulance Victoria
33 Willis Street



Uniting Church
33 Hesse Street



Senior Citizens
36 Harding Street



Men's Shed
51 Hesse Street



Winchelsea Golf Club
13 Anderson Street



Hesse Rural Health
8 Gosney Street



Wurdale Memorial Hall
220 Wurdale Road

