

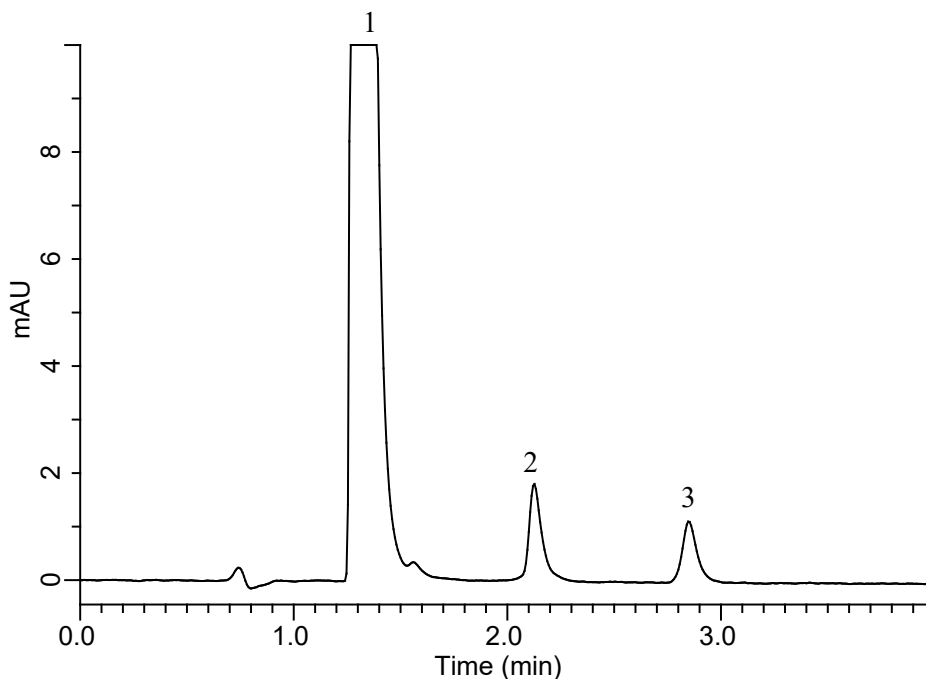
# InertSearch for LC

Inertsil Applications

## Analysis of Aldehydes

### (Detected by Pre-Column Method with DNPH)

Data No. LB697 - 848



#### Conditions

**System** : Chromaster HPLC system  
**Column** : InertCore Plus C18  
(2.6  $\mu$  m, 150 x 4.6 mm I.D.)  
**Column Cat. No.** : 5020-17522  
**Eluent** : A) CH<sub>3</sub>CN  
B) H<sub>2</sub>O  
A/B = 50/50, v/v

**Flow Rate** : 1.5 mL/min  
**Col. Temp.** : 40 °C  
**Detection** : UV 360 nm  
**Injection Vol.** : 10  $\mu$  L  
**Sample** : Standard

#### Analyte:

1. DNPH  
2. DNPH-Formaldehyde  
3. DNPH-Acetaldehyde  
(each 50  $\mu$ g/L in CH<sub>3</sub>CN)