



MARCH 11-22, 2025

with optional  
Rwanda Pre-Tour and  
Zanzibar Post-Tour

# TANZANIA WILDLIFE SAFARI



Orbridge



Dear Trojans,

Join us on a transformative wildlife safari through the heart of East Africa, the backdrop to the year-round migration of grazing herbivores that traverse the Serengeti Plains. Exploration is rewarded with insight, and every experience provides memories that resonate over a lifetime.

With exceptional access to Tanzania's game parks, you'll witness spectacular wildlife, colorful local traditions, and the endless sun-drenched savannas of Tanzania during this epic 12-day journey.

Trekking with expert naturalist guides in 4x4 Land Cruisers through breathtaking terrain, it's possible to encounter the Big Five (lions, leopards, elephants, rhinos, and buffaloes) plus cheetahs, wildebeests, zebras, primates, gazelles, and countless species of birds.

As each day's adventures draw to a close, you'll retreat to the lap of luxury in premium lodges and tented camps, each offering exceptional hospitality and superior amenities, ensuring your comfort after exhilarating days.

Space is limited to just 24 guests. With significant savings of more than \$1,000 per couple, we anticipate this tour will fill quickly.

For information or to make your reservation, please reserve online at [ustrojantravel.orbridge.com](http://ustrojantravel.orbridge.com), or call Orbridge at (866) 639-0079, or visit [TrojanTravel.usc.edu](http://TrojanTravel.usc.edu).

Fight On!



Linda J. Ball, '83  
Associate Director, Trojan Travel  
USC Alumni Association



# Tanzania Wildlife Safari | Itinerary and Highlights (subject to change)

Locations selected for this safari promise excellent viewing of wildlife, however, spotting specific wildlife cannot be guaranteed. Some activities are dependent on weather and seasonal conditions.

Day 1: EN ROUTE FROM U.S.

Day 2: ARRIVE IN ARUSHA, TANZANIA An Orbridge representative will be waiting to assist with your transfer to the hotel. Overnight: Arusha Serena Hotel, Resort & Spa

Days 3-4: TARANGIRE NATIONAL PARK Morning and afternoon game drives provide your introduction to Africa's natural beauty and wonder. Between game drives gather for a bush lunch inside the park. Lodging is inside the park, where you again may encounter elephants strolling the grounds. Overnight: Tarangire Sopa Lodge (B,L,D daily)

Day 5: NGORONGORO CONSERVATION AREA Enjoy a morning game drive before a farm walk and lunch at Gibb's Farm. Take advantage of hands-on experiences, including harvesting vegetables, milking cows, feeding pigs, and collecting eggs. Overnight: Ngorongoro Serena Safari Lodge (B,L,D)

Day 6: NGORONGORO CRATER Explore this UNESCO World Heritage Site and one of the seven natural wonders of Africa. During a riveting full-day game drive, spot for the Big Five and other species like wildebeest and flamingos. Overnight: Ngorongoro Serena Safari Lodge (B,L,D)

Days 7-8: OLDUVAI GORGE | SERENGETI NATIONAL PARK – SERONERA VALLEY Glimpse into the origins of humanity at Olduvai Gorge, one of the most important prehistoric archaeological sites on Earth. Daily morning and afternoon game drives through awe-inspiring landscapes of the Serengeti offer exhilarating opportunities to witness a plethora of grazing animals. Overnight: Serengeti Serena Safari Lodge (B,L,D daily)

Days 9-10: WESTERN SERENGETI | GRUMETI The Serengeti's relatively narrow western corridor consists of open savannas, woodlands, and floodplains. Daily morning and afternoon game drives afford additional opportunities to learn about these reserves and their diversity of bird and mammal species. Overnight: Mbalageti Serengeti Tented Chalets (B,L,D daily)

Day 11: SERENGETI | FLIGHT TO ARUSHA | DEPART FOR U.S. Day rooms are available at the hotel in Arusha before evening flights home. Day Room: Arusha Serena Hotel, Resort & Spa (B,L)

Day 12: EN ROUTE | ARRIVE IN U.S. (B = Breakfast, L = Lunch, D = Dinner)



## Serengeti Sunrise Safari

While in Serengeti National Park (days 7-8), take a once-in-a-lifetime sunrise safari by hot air balloon. During this optional excursion, ascend above the southern Serengeti at dawn for an exclusive, birds-eye view of wildlife roaming the expansive landscape.

Afterward enjoy a champagne breakfast plus a game drive before rejoining the group.

*This excursion must be purchased from Orbridge Guest Services in advance to guarantee availability. Purchase is non-refundable inside 90 days from departure.*



## What's Included

- 9 nights deluxe accommodations, each carefully selected to maximize wildlife viewing and comfort
- Access to a day room on departure day
- 9 breakfasts, 9 lunches, and 8 dinners, including a special farewell Serengeti bush dinner
- Expert naturalist guides throughout, including an Orbridge Expedition Leader
- Daily game drives in custom 4x4 Land Cruisers with roof hatch access and guaranteed window seating
- Coffee and tea with meals and filtered water on game drives
- Internal flight from the Serengeti to Arusha
- All main program gratuities
- All taxes, service charges, and park fees
- Temporary membership in Flying Doctors Service
- Airport transfers for guests arriving and departing on suggested flights



**Activity Level:** This safari tour requires an ability to walk safely over uneven and slippery ground without assistance, transport luggage a short distance, get in and out of a 4x4 Land Cruiser, and physically tolerate vehicle motion on oftentimes bumpy Serengeti roads.



## Accommodations *(subject to change)*

### ARUSHA SERENA HOTEL, RESORT & SPA

A comfortable retreat on the shores of beautiful Lake Duluti, this country house-styled hotel is built on what used to be a coffee plantation.



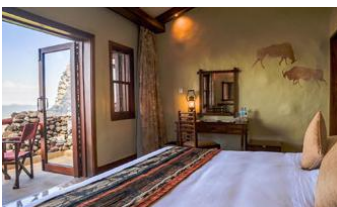
### TARANGIRE SOPA LODGE

Enjoy outstanding accommodations amidst a gorgeous landscape. Amenities include an outdoor pool, centrally located common room, bar and lounge, and outdoor terrace.



### NGORONGORO SERENA SAFARI LODGE

Built from local river stone and designed to completely blend in with the landscape, this luxury hotel sits on the rim of the Ngorongoro Crater.



### SERENGETI SERENA SAFARI LODGE

You'll stay in a thatched circular rondavel nestled among acacia trees in the manner of a traditional African village.



### MBALAGETI SERENGETI TENTED CHALETs

This property offers a breathtaking 360-degree panoramic view of the Serengeti Plain, comfortable and well-appointed rooms, and a refreshing pool.



# Optional Pre-Tour Rwanda

Search for the gorillas that traverse the Virunga Mountains for the heart-pounding thrill of observing these giants in their natural habitat.



Day +1: EN ROUTE FROM U.S.

Day +2: ARRIVE IN KIGALI, RWANDA Meet your host and transfer to the hotel for a restful evening.  
Overnight: Kigali Serena Hotel

Day +3: KIGALI | KINIGI Morning sightseeing today includes a tour of the Genocide Museum. Enjoy lunch in Kigali before the drive to the Mountain Gorilla View Lodge where you can rest and prepare for tomorrow morning's trek.  
Overnight: Mountain Gorilla View Lodge (B,L,D)

Day +4: KINIGI | VOLCANOES NATIONAL PARK | MORNING GORILLA TREK | KIGALI After an early breakfast, set out for mountain gorilla trekking in Volcanoes National Park. Encountering these amazing animals up close is a life-changing experience. National park guides will lead you through the thick forest in search of one of the habituated gorilla families that traverse the Virunga Mountains. Upon finding the group, we will have one hour to observe and capture remarkable photographs.  
Overnight: Kigali Serena Hotel (B,L,D)

Day +5: KIGALI | FLIGHT TO ARUSHA | MAIN PROGRAM BEGINS After breakfast take the group flight to Arusha to join fellow travelers for the main program. (B)

**Activity Level:** Guests should be in very good physical condition with the ability to walk up and down hills in tropical forests on uneven, sometimes rocky, steep and/or slippery, terrain. The forest can be humid and paths may have heavy vegetation.

## What's Included

- 2 nights accommodations at Kigali Serena Hotel (or similar)
- 1 night accommodations Mountain Gorilla View Lodge (or similar)
- 3 breakfasts, 2 lunches, and 2 dinners
- Excursion transportation, all park fees, and one gorilla trek permit
- Temporary membership in the Flying Doctors Service
- Airport transfer for guests arriving on the suggested flight
- Internal airfare from Kigali to Arusha for the main program



# Optional Post-Tour Zanzibar

Known as Spice Island and overflowing with influences from Africa, Arabia, India, and Europe, Zanzibar is a fascinating destination with a dramatic history, endless coastlines, and a magical atmosphere.

**Day 11:** **FLIGHT FROM ARUSHA TO ZANZIBAR** After the main program flight from the Serengeti Grumeti airstrip to Arusha, board the quick flight to Zanzibar—the Spice Island.  
Overnight: Zanzibar Serena Hotel (L,D)

**Day 12:** **ZANZIBAR | JOZANI CHWAKA BAY NATIONAL PARK** After breakfast set out on a walking tour of Zanzibar's old town, Stone Town—a UNESCO World Heritage Site—and its market. Visit the House of Wonders, which displays exhibitions dedicated to Swahili culture, as well as the Palace Museum, highlighting its ties to Zanzibar's Omani history. At the Zanzibar Old Fort, discover the fortification's colorful history, from its development in 1698 to how the structure is still being occupied today. After lunch travel across the island through quaint villages and lush vegetation to enchanting Jozani Chwaka Bay National Park—the only national park in Zanzibar and home to the unique red colobus monkey. Enjoy time to explore the forest before returning to the hotel for dinner.  
Overnight: Zanzibar Serena Hotel (B,D)

**Day 13:** **ZANZIBAR | OPTIONAL SPICE PLANTATION TOUR / DEPART FOR U.S.** The morning is at leisure. Depending on departing flight times, you may choose to join the optional spice tour excursion. (*Purchase in advance from our Orbridge Guest Services. Reserve early for best availability as space is limited.*) Relax in the day room at the hotel until taking the complimentary transfer to Abeid Amani Karume International Airport for flights home.  
Day Room: Zanzibar Serena Hotel (B,L)

**Day 14:** **EN ROUTE | ARRIVE IN U.S.**

## What's Included

- Internal airfare from Arusha to Zanzibar
- 2 nights accommodations at Zanzibar Serena Hotel (or similar) plus a day room during departure day
- 2 breakfasts, 2 lunches, and 2 dinners
- Guided panoramic city tour
- Admission to the House of Wonders, the Palace Museum, and Jozani Chwaka Bay National Park
- All excursion transportation
- Airport transfer for guests departing at the suggested times





# TANZANIA WILDLIFE SAFARI

**MARCH 11-22, 2025**

Rwanda Pre-Tour: March 8-12, 2025

Zanzibar Post-Tour: March 21-24, 2025

## Reserve by Credit Card:

Online: [usctrojantravel.orbridge.com](https://usctrojantravel.orbridge.com)

Phone: (866) 639-0079

Fax: (206) 452-5655

## Reserve by Check:

Made payable to **Orbridge, LLC**

Mail to: Orbridge, P.O. Box 1376

Poulsbo, WA 98370

We strongly suggest purchasing travel insurance. Travel insurance information will be sent to you with your confirmation letter from the USC Trojan Travel office. For more information, contact Orbridge at (866) 639-0079 or you may call the USC Trojan Travel office at (213) 821-6005.

## GUEST INFORMATION:

Guest #1 Name (Title/Salutation): \_\_\_\_\_

Email: \_\_\_\_\_ Class Year: \_\_\_\_\_

Home Phone: \_\_\_\_\_ Alt. Phone: \_\_\_\_\_

Address: \_\_\_\_\_

City: \_\_\_\_\_ State: \_\_\_\_\_ Zip: \_\_\_\_\_

Guest #2 Name (Title/Salutation): \_\_\_\_\_

Email: \_\_\_\_\_ Class Year: \_\_\_\_\_

Home Phone: \_\_\_\_\_ Alt. Phone: \_\_\_\_\_

## DEPOSIT PAYMENT:

Check  ACH (Automated Clearing House)  MasterCard/Visa  American Express  Discover

Card #: \_\_\_\_\_ Exp. Date: \_\_\_\_\_ CV: \_\_\_\_\_

Name (as printed on card): \_\_\_\_\_

Billing Address (if different from above): \_\_\_\_\_

City: \_\_\_\_\_ State: \_\_\_\_\_ Zip: \_\_\_\_\_

## DEPOSIT:

**PRE-TOUR GORILLA TREK PERMIT FEE:** A gorilla trek permit fee deposit of \$750 per person is required to guarantee availability. This non-refundable and non-transferable permit is purchased at the time of reservation.

# \_\_\_\_\_ guests joining pre-tour (\$750/person)  
(non-refundable gorilla permit fee) \$ \_\_\_\_\_

# \_\_\_\_\_ guests joining program (\$850/person) \$ \_\_\_\_\_

# \_\_\_\_\_ guests joining post-tour (\$500/person) \$ \_\_\_\_\_

**TANZANIA OPTIONAL EXCURSIONS** (added to your final invoice)—**book early; limited space available:**

# \_\_\_\_\_ guests joining Balloon Safari (\$599/person)


**ZANZIBAR OPTIONAL SPICE PLANTATION TOUR** (added to your final invoice)—**flight time permitting:**

# \_\_\_\_\_ guests joining Spice Plantation Tour (\$79/person)

**TOTAL DEPOSIT: \$ \_\_\_\_\_**

I/we have read, understand, and agree to the full Terms & Conditions at [terms.orbridge.com](https://terms.orbridge.com); and I/we agree that Orbridge, LLC is authorized to charge my credit card above and/or take my/our deposit for this program.

Signature: \_\_\_\_\_ Date: \_\_\_\_\_

 Orbridge takes seriously the responsibility to minimize our global environmental impact. Each year we plant 100,000 trees in U.S. State Forests with afforestation needs as an ongoing initiative among our evolving sustainability efforts. Learn more at [orbridge.com/going-green](https://orbridge.com/going-green).

\*Special group rate; limited offer. Single availability limited. Airfare from Rwanda to Tanzania is included in the pre-tour rate. Airfare from the Serengeti to Arusha is included in the main program rate. Airfare from Arusha to Zanzibar is included in the post-tour rate. Airfare otherwise not included. \*\*Place your deposit on or before the specified date, and one Expedition Library per room will be sent after receipt of final payment.

Category	Standard Rate	Special Rate*
Double	<del>\$8,499</del>	\$7,995
Single	<del>\$10,999</del>	\$10,495
<b>Rwanda Pre-Tour</b> <i>(includes Rwanda gorilla trek permit)</i>		
Category	Standard Rate	Special Rate*
Double	<del>\$4,599</del>	\$4,395
Single	<del>\$5,799</del>	\$5,595
<b>Zanzibar Post-Tour</b>		
Category	Standard Rate	Special Rate*
Double	<del>\$2,399</del>	\$2,195
Single	<del>\$3,099</del>	\$2,895

Rates are per person based on double occupancy except where noted as Single, in U.S. dollars.



# TANZANIA WILDLIFE SAFARI

**FREE EXPEDITION LIBRARY**  
AN EXCLUSIVE EARLY  
RESERVATION BONUS

**MARCH 11-22, 2025**

USC Alumni Association  
3607 Trousdale Parkway, TCC 305  
Los Angeles, CA 90089-3106

Reserve by  
**May 31, 2024\*\***

**Special Alumni Rate:**

**Save more than \$1,000 per couple**

**30-DAY REFUND GUARANTEE**

## **What Guests Are Saying...**

We've never traveled with Orbridge before but we will absolutely book another trip--hopefully, sooner than later! It was a well organized trip--very professional--really happy with everything.  
~Karen B., Summerfield, NC

Orbridge did a great job of setting the itinerary. The guides were very knowledgeable and they kept our transfers/baggage handling as pain free as possible. We were very pleased with the whole experience. Our primary expedition leader was excellent. He was organized, interactive, knowledgeable and fun to be with. We enjoyed interacting with all of our guides. They truly wanted us to have a great experience.  
~Diane H., Wilmette, IL

PRRST STD  
U.S. POSTAGE  
PAID  
PERMIT NO. 825  
SAN DIEGO, CA