

5—22
o Māehe · March
2026

YOUR FREE
Festival Guide



AUCKLAND ARTS FESTIVAL



What's on at the Festival...



27 Club

34

BIG HORNS

48



Bluebeard's Castle

30

The Butterfly Who Flew Into The Rave

28



Daniel Verstappen
with the Aotea Youth Symphony

50

Duck Pond

26



Festival Garden & ROVA Sound Stage

6

He Kākano
Becoming Jeff Bezos, Marmite & Honey

32



He Manu Tioriori

46

Ihi. Wehi. Mana.

44



In Your Neighbourhood String Quartets

33

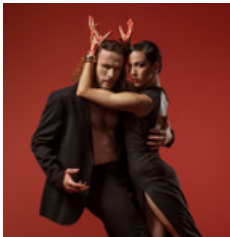


Julia Bullock
with Auckland Philharmonia

18

La Ronde

12



Macbeth

8



Music Portrait of a Humble Disabled Samoan

10



5—22 o Māehe • March 2026

ONO with Moana & the Tribe

20



A Place in the Sultan's Kitchen

24



Sau Fiafia! Boogie Down!

4



Shanghai Symphony Orchestra

42

Sincere Apologies

39

St Matthew's Chamber Orchestra Young & Brilliant

51

Ten Thousand Hours

40



The Visitors

36

Visual Arts

52—55



Waiora Te Ūkaipō The Homeland

16

Werewolf

15



WET

14

Whānau Day

23

Accessibility

The following icons in this Festival Guide and on our website indicate the accessibility of our events.

For more information on booking low-cost tickets through our award-winning accessibility initiative, see page 63 or visit aaf.co.nz/access.



Audio Described performances



Suitable for Blind & Low Vision audiences



Hearing Loop available



New Zealand Sign Language interpreted performances



Pre-show information available



Relaxed performances



Touch Tours




Very Visual performances



Wheelchair access


**Ko Toitū Te Reo te hua
o tō mātou ngākau
titikaha ki te reo Māori.**

**I tēnei mātārere, ko tā te
tohu harakeke he tohu 
i te kaupapa e noho ana
hei wāhi nō Toitū Te Reo
— ko tōna whāinga, kia
māori te rere o te reo,
kia tautokona rānei ngā
ringa toi Māori i raro i te
maru o te manaakitanga.**

He mea arataki nā te Rautaki Māori o
te Auckland Festival Trust, nā Tuia Te
Muka Kōrero, tērā e ārahi ana i tō mātou
haepapa ki te whakaū i te mana o te
ao Māori, ki te whakanui hoki i te reo
Māori hei taonga, mā Toitū Te Reo e
mātua kitea ai, e mātua rangona anō
ai te reo Māori huri i te hui Ahurei.

Kua oti he tapanga whakaaturanga, he
whakamārama, he whakaari hoki ki te
reo Māori; arā hoki he tohu me ētahi
pānui tōmua i ngā whakaaturanga e
reorua ana; ka whakamahia hoki ētahi
kupu Māori kāore e whakapākehātia,
tae pū atu ki ērā kua whānui te
whakamahia e te tokomaha o ngā
tāngata i Aotearoa. Koinei noa iho
ētahi o ngā wāhi e pāorooro ai te reo
Māori hei wāhi matua nō ngā wheako
ka rangona i te hui Ahurei, otirā, nō ngā
rā o tō tātou ao i Tāmaki Makaurau nei.

**Toitū Te Reo is
our commitment
to te reo Māori.**

**In this brochure,
the harakeke icon 
indicates an event
within the Toitū Te Reo
kaupapa — its purpose,
to normalise te reo or
support Māori creatives
under the mantle
of manaakitanga.**

Led by The Auckland Festival Trust's
Māori Strategy, Tuia Te Muka Kōrero,
which guides our responsibility to
uphold the mana of te ao Māori and
acknowledge the Māori language as
taonga, Toitū Te Reo ensures te reo is
seen and heard throughout the Festival.

Show titles, descriptions and
performances in te reo, bilingual
signage and pre-show announcements,
and the use of kupu without English
equivalents — especially those that
have become inherent in their use
by many New Zealanders — are just
some of the areas where te reo Māori
resounds as an integral part of the
Festival experience and our everyday
lives here in Tāmaki Makaurau.

**Ko te reo kia tika,
ko te reo kia rere,
ko te reo kia Māori.**



**Nau mai, haere mai,
welcome to Te Ahurei
Toi o Tāmaki Auckland
Arts Festival 2026.**

**A celebration of our
city in full colour.**

**For 18 unforgettable
days and nights, we
invite you to see our
city in a new light.**



Wander through the magic of the Festival Garden, step inside the sensation of the Spiegeltent, be moved by powerful visual art, or lose yourself in the stories unfolding on our many stages. Wherever you go, the Festival is your invitation to fall in love with Tāmaki Makaurau; its people, its places and its pulse.

At a time when the everyday can feel heavy, we offer escape, exhilaration and connection. And we offer it live.

Witness the impossible as artists stretch the limits of physical skill (often hilariously!). Laugh, cry and reflect with stories from our elders, whose courage and sacrifices shaped the Aotearoa we live in today. Let the beat pull you into the intensity of a rave, or the quiet power of a whispered tale.

This is a celebration of us; of joy, resilience, humour and heart.

Through stories both new and reimagined, we shine a light on who we are and what we value as a nation. And in a city that lives and breathes music, there's something for every ear; from orchestral to opera, from hard rock to groove.

So come on down, bring your whānau, your pals, your dancing shoes and your curiosity.

Snap a selfie with our ❤️ **TĀMAKI** artwork by day or night, show your pride for this city, soak up the festival energy, and help us stretch the summer sunshine a little longer.

This is your city. This is your Festival.

**Let's celebrate everything
good about it, together.**

Whakanuia, kia hurō tātou katoa.

Sau Fiafia! Boogie Down!

WITH Island Vibes

Afio mai, tatou fiafia fa'atasi e fa'afeiloai atu i le amataga o le 2026. E te ulufale fua i le Aotea Square. Fai ou se'evai siva ma tatou lalolalo fa'atasi i musika manaia a le Island Vibes. Pule oe i au taga e fai, ma fa'asolo lau maimoa i fa'afiafiaga e tatala ai le po fiafia pe eva fo'i i le Festival Garden I le lagota o le la. Mautinoa lava le manaia o le afiafi!

E iva ituaiga fatuga Pasifika ese'ese a le Island Vibes e tata ai. Talu ai le mo'omia tele o lenei fa'ili lauiloa. O le a toe fa'afiafia ma tatala aloaia vaiaso e tolu o fa'afiafiaga i musika manaia. Talu mai le uluai taimi na tata ai i le fa'afiafiaga 2025 ua le uma le mananoa i ai o tagata, ma o le a tatala aloaia vaiaso e tolu o fa'afiafiaga i musika manaia ma fatuga patino fa'apea ituaiga siva e fa'aminoini ai tamaivae, ma lue ai puimanava. Afio mai, Aumai lou aiga atoa!

Join us to kick off 2026 with a FREE music gathering in Aotea Square. Throw on your dancing shoes and boogie down with us to the funky, soulful rhythms of Island Vibes. Let it all out and dance like nobody's watching, then head on out for an opening night show or a hangout at the Festival Garden in the golden hour sunlight. Good vibes, guaranteed!

Island Vibes are a nine-piece multi-cultural, multi-disciplinary Pacific funk band. After their feel-good Festival debut in 2025 they return by popular demand, performing both groove classics and raw original songs to launch three weeks of festivities in trademark foot-tapping, hip-moving style. Come on down and bring your whole family!



Aotea Square



Thu 5 March, 5.30pm



1hr 45mins no interval. Suitable for all ages.



Learn more
about this
and other
FREE EVENTS
in March.





Festival Garden



Whether you're out to see a show or here to hang out, come bask in the sun or revel as dusk settles for eats, drinks, FREE live music and, if you're lucky, an encounter with your favourite Festival artists.

This relaxing, beautifully lit space is open before, during and after our evening schedule of shows and plays host to the **ROVA Sound Stage**, where DJs and musicians are on rotation to extend that late summer energy a little while longer.



**Festival Garden & ROVA Sound Stage,
Aotea Square**



Thu 5 — Sun 22 March



ROVA Sound Stage music schedule to be announced.
Visit aaf.co.nz for more info.



Find out
what's on
in the
FESTIVAL
GARDEN



Festival Garden Sound Stage sponsored by

rova ▶ Let's play.



🔑 ❤️ **TĀMAKI by Angus Muir Design**

Show your pride for Tāmaki Makaurau and be part of the Festival spirit! Our signature art installation shines at the heart of Aotea Square; a vibrant beacon of creativity and love for our city. Come together with friends, whānau and fellow festival-goers to soak up the atmosphere, make a memory and snap your perfect Insta moment. Share what makes you proud to call this city home and don't forget to tag us @aucklandartsfestival.



🔑 **Te Mauri o te Ahurei** **The Lifeforce of the Festival**

He rite tonu te whakamāramahia o te mauri hei ngaro e here ana i te tangata ki te taiao. Ki te kore te mauri, ka kore te mana. I hukea ake tēnei kōhatu nei i te wāhi e tū ai te Tūranga o Aotea ka whakaotihia ākuanēi, ā, mā te kōhatu nei tātou e here ki tēnei papa, ki tēnei wāhi. E akiaki ana mātou i ngā tāngata katoa o Tāmaki Makaurau ki te whakapā atu ki te kōhatu nei kia rongo ai i tōna mauri, ā, kia whakatōkia atu ai hoki he mauri, he mana anō hoki mā te mirimiri i te kōhatu.

Mauri is often described as an energy which binds people to the natural world. Without mauri, mana (extraordinary personal power) cannot flow. This particular stone was excavated from the site of the soon to be completed Aotea Station, and connects us to this place and space. We encourage all Aucklanders to interact with the stone, to feel its life force and to infuse the stone with mauri and mana through rubbing the stone.

WEEKS
1—3

FREE

Whānau Friendly



Adult
tickets from
\$65



Macbeth

IN ASSOCIATION WITH AVIS

Royal New Zealand Ballet Choreographed by Alice Topp

MUSIC: CHRISTOPHER GORDON • DRAMATURGY: RUTH LITTLE • COSTUME DESIGN: ALEISA JELBART
SET & LIGHTING DESIGN: JON BUSWELL • CONDUCTOR: HAMISH McKEICH
STRING ENSEMBLE: MUSICIANS OF THE NEW ZEALAND SYMPHONY ORCHESTRA

Choreographer Alice Topp brings naked ambition, politics and transgression to the fore in an explosion of contemporary ballet with this new, original staging — propelling Shakespeare's iconic characters into a shadowy world of manipulation, boardroom intrigue and violence. As the Macbeths emerge as the new power couple atop a glamorous social set, the view from the top is dizzying — and the fall steep. The seduction of success turns to doubt, paranoia and madness, with mesmerising movement set to Christopher Gordon's pounding new score, layering full orchestral and heavy metal with live string octet, driving Macbeth and his Lady to a conclusion that is as inevitable as it is devastating.

**Kiri Te Kanawa Theatre, Aotea Centre****Wed 4 — Sat 7 March****2hrs approx inc interval.**

Recommended for ages 14+. Contains depictions of violence and suicide, sexual themes and drug use.

Music Portrait of a Humble Disabled Samoan

By Music Portrait Collective

O le Afioga ia Fonotī Pati Umaga, sa soifua a'e i Wainuiomata ma o le fa'atonuga a lona tamā, na'o le lua galuega e te sailia. A le o le Faifeau, o le Loia. Ae peita'i o lona naunauta'iga e taumafai e sa'ili lona lava lumana'i, na i'u ai ona avea le musika ma lona filifiliga. I le tausaga 2005 na sua uma ai fa'amoemoega, sa pa'ū fa'afuase'i ma na fa'apogai ai, na pē ona lima e o'o i ona vae. E tele tausaga na soso'o, sa feagai ai o ia ma faigata ma fa'afitauli, ae na i'u lava ina fa'afouina ai lona fa'moemoe ma le ola fuataina i nofoaga na te le'i mafauauina.

O le *Music Portrait of a Humble Disabled Samoan*, e lagolagoina malosi e tagata talenia mai Niu Sila ma le vasa Pasifika; ma o se fa'asoaina o se vaega o le tala i le malaga a le Afioga ia Fonotī Pati Umaga. E fa'atino lea i pesepesega, fagogo ma ata mamau vaaia e fa'ailoa ai lona tinoū, finafinau, ma le aogā o le musika e faaolaola le malosi faatumauiua, faamoemoe ma le mausali.

Raised in Wainuiomata, Fonotī Pati Umaga was given two options from his father about his future. Either become a church minister or a lawyer. Determined to follow his own path, however, he followed his heart and chose music. In 2005, everything changed when a fall left him a tetraplegic. Years of hardship followed before finding renewed purpose and healing in places he never expected.

Backed by a powerhouse Pacific creative team, *Music Portrait of a Humble Disabled Samoan* weaves live music, storytelling and visual design into a genre-defying celebration of resilience, hope and the fire music can carry.



Rangatira, Q Theatre



Thu 5 — Sun 8 March



1hr no interval.

Suitable for all ages. Contains haze.

Supported by



Commissioned by Te Ahurei Toi o Tāmaki Auckland Arts Festival and Aotearoa New Zealand Festival of the Arts, with support from Creative New Zealand's Festival Commissioning and Presentation Fund managed by Performing Arts Network New Zealand.

With support from Platinum Patrons
Andrew & Jenny Smith.



Adult
tickets from
\$59



12

Cabaret
Australia



Adult
tickets from
\$89



WEEKS
1—3

First time in Aotearoa

Night life in the heart of the city

From the creators of *Blanc de Blanc*, *Limbo Unhinged* and *Cantina*

**"Glitz, glamour
and incredible
displays of
talent."**



THE AU REVIEW

**"All-killer
no-filler."**



THE LIST



FIFTY+SA



HI FI WAY



ABOUT ADELAIDE



GLAM ADELAIDE



PLAY & GO



ENTERTAINMENT NOW



WOW FM

La Ronde

Strut & Fret

Five-time Festival favourites Strut & Fret return with their most dazzling spectacle yet. *La Ronde* radiates pure theatrical seduction, a heady mix of gravity-defying aerial work, jaw-dropping pole acts and choreography dripping with sass. Backed by powerhouse vocals and a soundtrack that fizzles like champagne, it's an intoxicating collision of circus, cabaret, comedy and exhilaration — or as one critic called it, "a glitter-soaked invitation to lose yourself in sequins, sass and sound." No Festival experience is complete without a trip to the famous Spiegeltent — so gather your best-dressed pals, pick a performance, and pair it with another show before or after to make it an evening you'll never forget.



Spiegeltent, Aotea Square



Thu 5 — Sun 22 March



1hr 30mins inc interval.

Recommended for ages 15+.

Contains strobe lighting, haze and mild nudity.



WET

By Tūi Matelau

DIRECTOR: AMBER CURREEN • FEATURING: BRONWYN TUREI

Tuhi ai ia i te paki karihika. Whakahēngia ai ia e rātou. Karangahia ai tērā e ia, ko Tūrei. Piri mai ki te kaitito paki 'whakatarā' munamuna, ki a Aroha, me tētahi kāhui kiripuaki ka titia ki te rae, i tēnei whakaari, he totoa, he hārikēhi, he māia hoki tana ruku ki te hōkakatanga wahine, ki te mana auaha herekore, otirā, ki ngā tukitukinga i te ao o te māmā o nāianeī, whakapōrearea mai, ātaahua mai anō. Te toa o te 2025 ADAM NZ Play Award mō te Tino Whakaari nā te Kaitito Whakaari Pasifika.

She writes smut. They call her unfit. She calls that Tuesday. Join undercover 'cliterature' author Aroha and a cast of unforgettable characters for this fierce, funny and unflinching exploration of wahine sexuality, creative freedom and the messy, beautiful contradictions of modern motherhood. Winner of the 2025 ADAM NZ Play Award for Best Play by a Pasifika Playwright.



**Te Pou
Theatre**



**Thu 5 —
Sun 15 March**



**1hr 20mins
no interval.**
Recommended
for ages 15+.
Contains haze,
adult themes and
strong language.



Adult
tickets from
\$38



Presented by Te Pou
Theatre in partnership
with Auckland Live and
Te Ahurei Toi o Tāmaki
Auckland Arts Festival.

World Premiere



Toitū Te Reo

Theatre that isn't afraid to get...sticky

WEEKS
1—2



Werewolf

Binge Culture

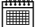
CREATED BY JOEL BAXENDALE, FREYA DALY SADGROVE, OLIVER DEVLIN, KARIN MCCrackEN & RALPH UPTON

PERFORMERS: STELLA REID, JOEL BAXENDALE & HANNAH KELLY

DRAMATURGY: RALPH UPTON • SOUND DESIGNER & OPERATOR: OLIVER DEVLIN • STAGE & PRODUCTION MANAGER: ELEANOR STRATHERN

Three ill-equipped wardens keep watch over a makeshift community (that's you, the audience) who must learn to work together. But as the threat outside takes shape, the atmosphere inside begins to turn. Inspired by the classic game of deception, *Werewolf* is a riveting horror-comedy experience from the savvy minds at Binge Culture, whose acclaimed interactive theatre works are a joy to play along with. Returning from a sold-out season in Edinburgh, their most entertaining creation yet pulls you into a world of suspicion, survival and uneasy laughter. With heart-pounding sound design, razor-sharp performances and a daring, darkly funny style, this thrillingly immersive cult hit asks: When night falls — who do you trust?

 **Loft, Q Theatre**

 **Thu 5 — Sun 8 March**

 **1hr no interval.**

Recommended for ages 12+.

Contains contains periods of complete darkness, flashing lights, loud noises, content designed to unsettle, and non-compulsory audience participation.

WEEK
1

Spooky, suspenseful and social

Bring your friends, outwit your frenemies

Presented by
Te Ahurei Toi o Tāmaki
Auckland Arts Festival
and Performing Arts
Network New Zealand.



Adult
tickets from
\$49





Waiora Te Ūkaipō

The Homeland

Written & Directed by Hone Kouka

WAIATA COMPOSITION: HONE HURIHANGANUI • ASSISTANT DIRECTOR: HŌHEPA WAITOA
SET DESIGN: MARK MCENTYRE • LIGHTING DESIGN: NATASHA JAMES • COSTUME DESIGN: CARA LOUISE WARETINI
SOUND DESIGN: MAARIRE BRUNNING-KOUKA • PRODUCER: MIRIA GEORGE

He mea whakataruna ko te tau 1965, ka whai a *Waiora* i a Hone, nōna ka kawea i tōna whānau i te Tai Rāwhiti ki Te Waipounamu ki te kimi oranga. Ka huihui rātou ki tātahi, he huritau, he hāngī te kai, he manuhiri hoa Pākehā hoki, he kupu muna, he tohe ahurea ka puea ake. Matara ana i tō rātou kāinga, ko hea hei tūranga mō rātou, kei kawea e ngā tai hurihuri o te wā?

Whakaari tuatahitia ana i te tau 1996, he whakaaturanga hirahira a *Waiora* nō te ao toi whakaari o Aotearoa e matapaki ana i te tāmi, i te hekenga tāone, i te whakatete anō o te onamata ki te anamata. Ka auraki ake te kaituhi whai tohu rau, a Hone Kouka, hei ringatohu mō tāna anō whakaari huritao mō te whānau, te ahurea, me te tūrangawaewae.

Set in the summer of 1965, *Waiora* follows Hone, who brings his whānau from the East Cape to the South Island in search of a better life. As they gather for a beachside birthday hāngī with their Pākehā guests, buried secrets and cultural tensions rise to the surface. Far away from home, can they find a place to stand together or will they be set adrift in an ocean of change?

First performed in 1996, *Waiora* is a landmark piece of Aotearoa theatre exploring the impact of colonisation, the urban drift, and the tension between past and future. Multi-award-winning writer Hone Kouka returns to direct his own powerful reflection on family, culture and belonging.



ASB Waterfront Theatre



Fri 6 — Sun 22 March



2hrs 15mins inc interval.

Recommended for ages 13+.



Adult
tickets from
\$50





Adult
tickets from
\$59



"One of the singular artists of her generation." — *The New York Times*

Julia Bullock

WITH Auckland Philharmonia

Conductor: Christian Reif

Grammy Award-winning American soprano Julia Bullock makes her only Aotearoa appearance with an exclusive evening sure to be filled with magnetic presence and technical precision, alongside visionary conductor Christian Reif. Acclaimed for her "intense, authentic feeling, as if she were singing right from her soul" (*Opera News*), Bullock is a phenomenal artist whose performances resonate with emotional honesty and artistic power. Influenced by Nina Simone and Billie Holiday, she's admired for her bold, genre-defying style and thoughtful curation of empowering songs. Together with Reif, praised for his emotionally charged conducting, and, with the full force of the Auckland Philharmonia, this one-night-only concert promises an unforgettable experience of music, presence and purpose.



Great Hall, Auckland Town Hall



Sat 7 March, 7.00pm



1hr 50mins approx inc interval. Suitable for all ages.



ONO

WITH Moana & the Tribe

FEATURING: MOANA MANIAPOTO, PADDY FREE, SCOTTY TE MANAHAU MORRISON,
TRINA MANIAPOTO, MARIKA HODGSON, CADZOW COSSAR, ANETA MORGAN & MORE

VISITING MUSICIANS: SHELLIE MORRIS ao (Yanyuwa, Australia), KAUMAKAIWA KANAKA'OLE (Kanakanaka Maoli, Hawai'i)

Hei whakanui i Te Rā Huriao o Ngā Wāhine, ka takoto i a Moana & the Tribe ko *ONO*, koia ko tā rātou kōputu waiata hōu ka tīmata i Aotearoa, ka huri ai i te ao. Tokoono ngā wāhine iwi taketake ka whai wāhi ki tētahi hanumitanga tū mataora me te whakaaturanga ataata. He mea tuitui atu hoki ko ngā reo rōreka, ko te kapa haka, ko ngā pūkenga kanikani, ko ngā ia papā-tāhiko anō e kori ai te tangata.

Ko ngā kupu reo Māori e whakanui ana i te mana nui o te tangata, o te whanaungatanga, o te reo anō hoki. Whai wāhi mai ana ko ētahi ringapuoro kua toro mai i tāwāhi, arā, ko Shellie Morris nō Te Whenua Moemoeā rāua ko Kaumakaiwa Kanaka'ole nō Hawai'i. Kitea ana hoki he whakaahua ataata waiwaiā nō te rohe pae maunga o Kōtiranā, nō ngā whenua o te Kōpaka Raro, nō tua atu anō, he wheako puoro tēnei e whakaū ana i ngā mātāpono o te tūmanako me te kotahitanga.

In celebration of International Women's Day, Moana & the Tribe present *ONO*, their latest album that begins in Aotearoa and travels the world. Six Indigenous women are featured in a hybrid of live performance and video showcase infused with sublime vocals, kapa haka and dance prowess, and funky electronic-dub beats.

Lyrics in te reo Māori pay homage to the power of people, relationships and language. With visiting musicians Shellie Morris from Australia and Kaumakaiwa Kanaka'ole from Hawai'i, alongside breathtaking visuals from the highlands of Scotland, Arctic Circle and beyond, this is a music experience that reinforces the values of hope and unity.



Great Hall, Auckland Town Hall



Sun 8 March, 7.00pm



1hr 50mins inc interval. All ages event.



Adult
tickets from
\$59



GRAND
MILLENNIUM
AUCKLAND

71 Mayoral Drive,
CNR Vincent Street
AUCKLAND CENTRAL
+64 9 366 3000



A PERFECT STAY

Just Steps from Aotea Square

Grand Millennium Auckland is a 5-star hotel just a short walk from Aotea Square and its theatres, offering a superior experience with exceptional attention to detail.

The hotel features spacious rooms and suites, along with a fantastic dining precinct. Enjoy contemporary cuisine at Ember, High Tea at the Aviary, or authentic Japanese at Katsura — all perfect for pre-show dining.

Enjoy 20% OFF — Dining Precinct

Present this ad at any of the Grand Millennium Auckland Restaurants to enjoy a 20% discount on your food and beverage bill.



ROBERT & JEANETTE
6-10AM WEEKDAYS

SARAH VAN DER KLAY
10AM-3PM WEEKDAYS

MIKE PURU
3-7PM WEEKDAYS

THEBREEZE.ROVA.NZ

rova  Let's play.

@THEBREEZENZ



Whānau Day



A Festival family favourite and the perfect way for tamariki and their parents to fall in love with the arts in the heart of Tāmaki Makaurau, *Whānau Day* is back for another year in Aotea Te Papa Tū Wātea.

Don't forget to check out aaf.co.nz/whanau-day in early 2026 for a full announcement of the day's activities, performances and outdoor play in the sun. It's a pint-sized festival within the Festival for young ones, all of it FREE, friendly and fun.



Aotea Square



Sun 8 March, 10.00am to 4.00pm

WEEK
1

FREE

Whānau Friendly



Learn more
about this
and other
FREE EVENTS
in March



A Place in the Sultan's Kitchen

(or How to Make the Perfect One-Pot Chicken Curry)

By Joshua Hinton

A MERRIGONG THEATRE COMPANY PRODUCTION

DIRECTION & PRODUCTION DESIGN: LELAND KEAN • VISION & SOUND DESIGN: DOMINIC HINTON
 DRAMATURGY & ADDITIONAL WRITING: SIMON HINTON • LIGHTING DESIGNER: JASMINE RIZK
 CAST: JOSHUA HINTON, DOMINIC HINTON

Woven from the threads of a sweeping family epic, *A Place in the Sultan's Kitchen* is a charming, funny and moving fusion of theatre and good food. Creator Joshua Hinton fills the room with music, stories and exotic smells as he attempts to make his grandmother's chicken curry, live on stage. Through childhood memories and family folklore he transports us from the backstreets of Sri Lanka to a bustling city in India, from a schoolyard in Iran to a South African farm, to his home in Wollongong. It's a show for anyone who's searched for where they belong in this world, who's lived between different cultures, or who has loved and lost family.



Rangatira, Q Theatre

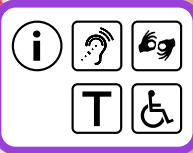


Thu 12 — Sun 15 March



1hr 10mins no interval. Recommended for ages 12+.
 Contains descriptions of violence.





Adult
tickets from
\$ 49





Adult
tickets from
\$59



Duck Pond

Circa

CREATED BY YARON LIFSCHITZ & THE CIRCA ENSEMBLE

Duck Pond takes Tchaikovsky's beloved masterpiece and gives it a dazzling twist — circus style. In this whimsically audacious reimagining of the world's most iconic tale of transformation, the brilliant minds and bodies of contemporary circus company Circa have outdone themselves. Sumptuous aerials, jaw-dropping acrobatics and a flurry of feathers swirl through their inspired fusion of this timeless score and the fairytale *The Ugly Duckling* — all of it performed with astounding, controlled chaos. If you like your high art served with humour and panache, *Duck Pond* is the perfect blend of elegance, thrills and entertainment, made for the grandeur of the Kiri Te Kanawa stage.



Kiri Te Kanawa Theatre, Aotea Centre



Thu 12 — Sun 15 March



1hr 15mins no interval. Suitable for all ages.



The Butterfly Who Flew Into The Rave

**Presented by Oli Mathiesen
with Lucy Lynch & Sharvon Mortimer**

TO *NOCTURBULOUS BEHAVIOUR* BY SUBURBAN KNIGHT

A trio of hardcore party people. A three-day rave jammed into 60 chaotic minutes. One electrifying non-stop dance performance. Fresh off mesmerising Australian audiences and completing an astonishing 23-show season in Edinburgh, this award-laden crowd favourite returns home for a triumphant encore. If you've not yet heard the word of mouth, the hypnotic brilliance of *The Butterfly Who Flew Into The Rave* lies in its test of endurance and the pure spectacle of watching these intrepid ravers dance themselves into techno oblivion. It's the ultimate tribute to the pain, sweat, and bodily catharsis of surrendering to the music and your passion for it all.



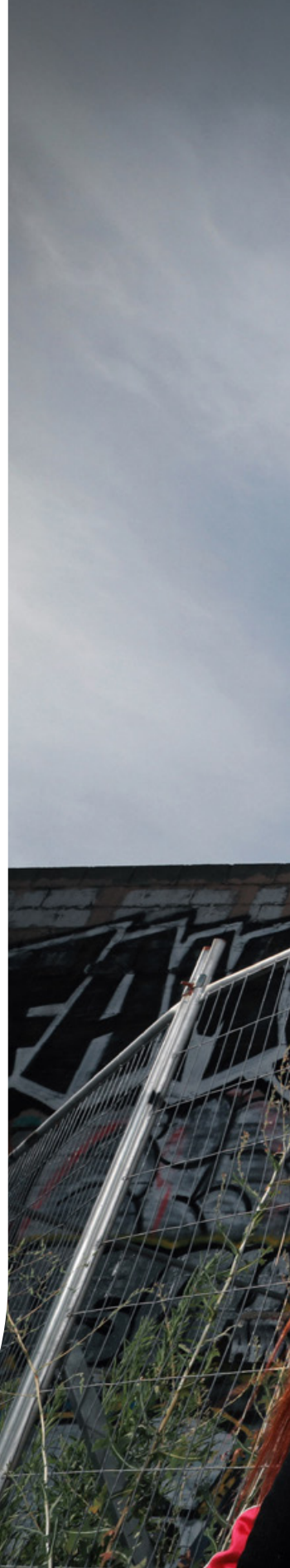
Rangatira, Q Theatre



Thu 12 — Sat 14 March, 9.00pm



1hr approx no interval. Recommended for ages 13+.
Contains haze, strobe lighting and loud noises.





Adult
tickets from
\$ 49





Adult
tickets from
\$65



Bluebeard's Castle

**New Zealand Opera
WITH Auckland Philharmonia**

MUSIC: BÉLA BARTÓK • LIBRETTO: BÉLA BALÁZS • CONDUCTOR: BRAD COHEN
DIRECTOR & TRANSLATOR: DAISY EVANS • SCENIC & COSTUME DESIGN: ADRIAN LINFORD
LIGHTING DESIGN: JAKE WILTSHIRE • SOUND DESIGNER: MAX PAPPENHEIM
ORIGINAL PRODUCTION BY THEATRE OF SOUND & OPERA VENTURES
BLUEBEARD: LESTER LYNCH • JUDITH: SUSAN BULLOCK

We meet an elderly couple in their suburban home; the place in which they've built a life together, and which holds all the memories they've shared. But for Judith, home now feels less than familiar. Living with dementia, she seeks to find what's buried in the trunk of an ever-dimming memory. With her husband and carer acting as her guide, they trace back the steps of their past together. Featuring world-class international singers accompanied by the Auckland Philharmonia, New Zealand Opera's "intricate and extraordinarily affecting" (*The Post*) production is elevated in this richly immersive Festival restaging.



Great Hall, Auckland Town Hall



Fri 13 & Sat 14 March, 7.30pm



1hr no interval. Recommended for ages 15+.
This production deals with dementia.



He Kākano



Becoming Jeff Bezos

by Alex Medland
(Kāi Tahu)



Marmite & Honey

by Rainton Oneroa
(Te Aupōuri)

Hei wāhi nō tā mātou hōtaka whakawhanake hei tautoko i ngā mahinga toi hōu, ka whakatairangahia ētahi whetū maiangi Māori tokorua, e kitea ana tō rāua pitomata ki ngā mahi tito whakaari. Ka pānuhia ā rāua whakaari e rua, ā, ko Jason Te Kare hei ringatohu.

Whakaarohia kei tētahi pito tuawhenua koe i Aotearoa, kāhore hoki ō hononga ki te ao o waho atu, mea rawa ake, ka tūpono ohore atu koe ki te angahaorawa ā-ao. Ka rere tēnei kāpeka whanokē i *Becoming Jeff Bezos*, koia te whakaari i toa i a ia ko te tohu Playmarket's Playwrights b4 25.

He mea whakataruna ko ētahi hāora 24 i tētahi tangihanga, he tohe, he muna, he pakanga nui anō ka puea ake ki te aroaro i *Marmite & Honey*, i tētahi whānau turingonge ka piri tahi ki te poroaki i tētahi o rātou kua riro, ka huritao anō ai ki te āhua e rongō ai rātou i te mamae me te ngarohanga.

As part of our development programme to support new work, we spotlight two promising young Māori playwrights with a pair of play readings directed by Jason Te Kare.

Imagine being in rural New Zealand with no contact from the outside world when you are suddenly confronted by global capitalism. This quirky scene plays out in *Becoming Jeff Bezos*, winner of Playmarket's Playwrights b4 25 award.

Set at a tangi over 24 hours, *Marmite & Honey* brings feuds, secrets and battles to the fore, as a dysfunctional family come together to farewell one of their own and reflect on how to deal with grief and loss.



Loft, Q Theatre



Fri 13 — Sun 15 March



1hr / 1hr 20mins approx no interval.

Suitable for ages 10+. Contains harsh language and references to violence.



Tickets
\$30



BY ARRANGEMENT WITH
PLAYMARKET
HE RŌPŪ TAUTOKO TITO
WHAKAARI O AOTEAROA



In Your Neighbourhood String Quartets

Auckland Philharmonia

FEATURING PRINCIPAL CELLO ASHLEY BROWN

CONCERTMASTER: ANDREW BEER • PRINCIPAL SECOND VIOLIN: MINGLUN LIU • PRINCIPAL VIOLA: ROBERT ASHWORTH

After the success of the Auckland Philharmonia's string principal's quartet programme in 2025, Principal Cello Ashley Brown is getting the band back together again. This time they'll be playing works by Beethoven, Ravel and New Zealand composer John Psathas.

The Auckland Philharmonia's ever-popular *In Your Neighbourhood* series — proudly supported by Davis Funeral Care — brings music out of the city and into Auckland's suburbs and communities. Hear our passionate musicians perform in an intimate setting closer to where you live.

 **St Luke's Church, Remuera**

 **Mon 16 March, 6.30pm**

 **Holy Trinity, Devonport**

 **Tue 17 March, 6.30pm**

 **St Heliers Church & Community Centre**

 **Thu 19 March, 6.30pm**

 **1hr approx no interval.** Suitable for all ages.

WEEK
3

Whānau Friendly

World-class classical musicians in the 'burbs



Adult
tickets

\$30





Adult
tickets from
\$49





WEEK
3

First time in Aotearoa

A rock revival that will lift the roof off the Spiegeltent

35

A certified hit across 14 Australian cities and at Edinburgh Fringe 2025

27 Club

Amplified House

At the age of 27, Janis Joplin, Amy Winehouse, Kurt Cobain, Jim Morrison and Jimi Hendrix all became instant music immortals. Now with the help of Aussie rock royalty from The Superjesus, Jebediah, Mondo Psycho and Wanderers, these icons get to power on as part of the *27 Club*. This fist-pumping, full immersion concert smashes together a rock and roll hall-of-fame setlist — from 'Smells Like Teen Spirit' to 'Piece of My Heart' — with the mythic storytelling of a live rockumentary. So come as you are and experience our famous Spiegeltent in classic rock mode for a music festival within the Festival — and one hell of a belter night out.



Spiegeltent, Aotea Square



Wed 18, Thu 19 & Fri 20 March



1hr 10mins no interval.

Suitable for ages 8+ (with parental guidance).

Contains strobe lighting and loud noises.

A Moogahlin Performing Arts &
Sydney Theatre Company Production,
produced by Performing Lines

The Visitors

By Jane Harrison (Muruwari)

Directed by Wesley Enoch AM (Quandamooka)

Visitors leave, right?

On a sweltering day in January 1788, seven clan leaders gather on a sandstone escarpment overlooking Sydney harbour. But beyond the friendly banter, protocols and hospitality, a momentous decision is waiting to be made. A mysterious fleet of nawi (giant boats) is amassing in the harbour and as it creeps closer, these representatives must choose unanimously: whether to send these strangers on their way or welcome them? Following its international premiere in New York, we're privileged to host this riveting, deeply researched insight into one of the most impactful and painful days in Australia's history. *The Visitors* is a hugely entertaining study of how communities respond to change and the unknown.



Rangatira, Q Theatre



Thu 19 — Sun 22 March



1hr 15mins no interval. Recommended for ages 13+.

Contains infrequent coarse language, themes of racial violence, descriptions of violence, intergenerational trauma and haze.



With support from





Adult
tickets from
\$59





Come and marvel at how wrong a
high school career advisor can be.

COLENSO LONG LIVE CREATIVITY




Sincere Apologies


By Dan Koop, Jamie Lewis & David Williams

BASED ON AN ORIGINAL CONCEPT BY ROSLYN OADES & DAVID WILLIAMS
AN ALTERNATIVE FACTS PRODUCTION

Experience a participatory performance based on all the apologies that the world keeps offering — the famous, the obscure, the deeply personal, and those that begin every second email in our inboxes. Part theatrical ritual, part social experiment, *Sincere Apologies* explores what it means to apologise in a society full of broken systems, failed relationships and bureaucratic disclaimers. Through this nurturing, communal, non-judgmental gathering where participation is voluntary, audiences slowly help construct the performance — reading aloud, reflecting silently or simply witnessing. Funny, moving and disarmingly sincere, the show holds space for reflection, repair and shared responsibility.

 **Loft, Q Theatre**

 **Thu 19 — Sun 22 March**

 **55mins no interval.**
Recommended for ages 13+.

Contains occasional coarse language and non-compulsory audience participation.

WEEK
3

First time in Aotearoa

Say sorry. Really mean it

Lyrical, thought-provoking and quietly subversive



Tickets
\$30



Ten Thousand Hours

Gravity & Other Myths

How long does it take to master a skill? For the world-class circus crew Gravity & Other Myths, it's tens of thousands of hours, and believe us it shows. Their latest global hit is part mind-blowing spectacle, part hilarious hangout with the most insanely talented mates you wish you had. They make the impossible look so easy, you'll swear you could do it yourself (spoiler: you can't). With the audience gently guiding the performers, no two shows and their jaw-dropping moments are quite the same. If you're into the 'wow', curious about the 'how', or just love a night out that'll leave you grinning, this is the superhuman squad you want in your world.



The Civic



Thu 19 — Sun 22 March



1hr no interval.

Suitable for all ages. Contains haze and loud music.





Adult
tickets from
\$39





Adult
tickets from
\$59



Shanghai Symphony Orchestra

CONDUCTOR: LONG YU · SOLOISTS: JIAN WANG (Cello), SERENA WANG (Piano)

由余隆作为音乐总监兼指挥领导的上海交响乐团自 1879 年成立以来，一直是推动中国古典音乐声誉的重要力量，也是 25 年多来首个访问本市的国际交响乐团。作为本艺术节的独家呈现，我们十分荣幸地迎来这支百余人规模的乐团，在其具有里程碑意义的亚太巡演中，为本地带来多达两场的精彩演出。两晚的演出将特别呈献梁皓一的《中国厨房——味觉的盛宴》选段——这部由十个乐章组成的华美巨制，以音符再现中国代表性美食的滋味与香气，堪称一场值得细细品味的交响盛宴。

Led by its renowned Music Director and Conductor Long Yu — hailed by *The New York Times* as “the most powerful figure in China’s classical music scene” — Shanghai Symphony Orchestra has been a major force behind China’s classical music prestige since 1879, and is the first international symphony orchestra to visit our city in more than 25 years. In a Festival exclusive, we’re honoured to welcome the 100+ ensemble for not one but two performances during its landmark Asia-Pacific tour*. Selections from Elliot Leung’s *Chinese Kitchen* — a luscious ten-movement centrepiece evoking the taste and aroma of signature Chinese dishes — will feature both nights and be a symphony to savour.



Great Hall, Auckland Town Hall

**Thu 19 March, 7.30pm**Elliot Leung: Selections from *Chinese Kitchen: A Feast of Flavours*

Tchaikovsky: Variations on a Rococo Theme (soloist: Jian Wang)

Tchaikovsky: Piano Concerto No. 1 (soloist: Serena Wang)

**Fri 20 March, 7.30pm**Elliot Leung: Selections from *Chinese Kitchen: A Feast of Flavours*Qigang Chen: Piano Concerto *Er Huang* (soloist: Serena Wang)

Rachmaninov: Symphony No. 2

**1hr 40mins approx inc interval.** Suitable for all ages.

Supported by



GRAND
MILLENNIUM
AUCKLAND

ICBC 工银新西兰

With support from Platinum Patrons
Sir Roderick & Gillian, Lady Deane.

Tour organised by Askonas Holt.



Ihi. Wehi. Mana.

Te Waka Huia & Karen Grylls CNZM

CREATIVE TEAM, TE WAKA HUIA: TAPETA WEHI, ANNETTE WEHI • CREATIVE TEAM, INVITATIONAL CHOIR: KAREN GRYLLS CNZM, ROBERT WIREMU

Kua 40 tau a Te Waka Huia e whakataetae ana i te atamira kapa haka nui o te motu, ā, e rima ana ekenga hei toa whakaihuwaka. Tutuki ana i te tau 2026 ko te 45 tau o tā te kapa ngākau titikaha ki te haka, ki te waiata, ki te pūruru, ki te whakangahau, ki te whakaako, otirā, ki te whakakanohi i a Aotearoa ki te ao.

He mata o mua, o nāianei anō nō Te Waka Huia ka tū tahi anō ki te ringatohu waiata tira taiea, ki a Karen Grylls, kua hia tau e ārahi ana i te mahi ngātahi a Te Waka Huia me ngā tira waiata ā-motu. I tīmata taua haere ngātahi i te tau 1996, i tā te tira National Youth Choir tū tahi me Te Waka Huia ki te waiata i a Kua Rongo i te Whare Ōpera o Poihākena. Tū tahi ana ki tētahi tira waiata motuhake kua āta pōhiringia ōna mema, ka rangona he waiata e rere tahi ai te reo Māori me te pūmanawa waiata, i tēnei hui whakanui e rewa ai te ngākau i ngā hononga ā-pūruru, ā-ahurea anō.

For 40 years Te Waka Huia has competed on the national kapa haka stage, winning the prestigious national title five times. 2026 marks 45 years of dedication from this kapa to Māori performing arts, singing, music, entertaining, educating and representing Aotearoa globally.

Past and present members of Te Waka Huia reunite with esteemed choral leader Karen Grylls, who has led the relationship with Te Waka Huia and the national choirs over the past decades. The 1996 performance of *Kua Rongo* with the National Youth Choir and Te Waka Huia in the Sydney Opera House was the beginning of that journey. Together with a bespoke invitational choir, this performance features waiata that combine te reo with vocal talent, in an uplifting celebration of musical collaboration and cultural connection.



Kiri Te Kanawa Theatre, Aotea Centre



Fri 20 March, 7.00pm

Sat 21 March, 3.00pm



2hrs inc interval. Suitable for all ages.



Adult
tickets from
\$59





Adult
tickets from
\$45





He Manu Tioriori

Muroki • Jordyn with a Why • MOHI

I ngā tau e whitu kua hori, ko te kaupapa Waiata Anthems, he mea kōkiri nā Kahurangi Hinewehi Mohi, he mea whakawhanake hoki mā ana mahi i Te Tautāwhinga (APRA NZ), kua noho hei papa whakapuāwai i te waiata reo Māori. Tīmata mai ana hei kaupapa whakamāori i ētahi waiata reo Pākehā kua oti kē, ko te aro ināianei ko ētahi tītonga hōu nā te ringatoi kua tautokona e te pou reo Māori, kia hua ai he waiata e kawē nei i te hōhonutanga, i ngā kupu whakarite, otirā, i te ātaahua o te reo.

Whai wāhi mai ana ko ngā reo rōreka o Jordyn with a Why rātou ko MOHI, ko Muroki, ka rahirahi te taringa i te whakaaturanga o *He Manu Tioriori*. Māna e rere ai ngā reo rōreka o te āpōpō ki ngā tini tōpito o te tāone me te hui Ahurei, i ngā ia me te reo o te āpōpō ka whakakorikori i a koe kia tū ai, kia kani ai e ai anō ki te manawataki.

For the past seven years the Waiata Anthems project, initiated by Dame Hinewehi Mohi and developed through her work at APRA NZ, has been a platform for waiata reo Māori to flourish. Initially a project for translation of existing songs into te reo Māori, the focus is now on fresh and original compositions with artists supported by Māori language consultants to craft waiata that carry depth, metaphor and beauty.

Featuring the soulful sounds of Jordyn with a Why, the dulcet tones of MOHI and the silky smoothness of Muroki, *He Manu Tioriori* will send the voices of the future to resonate throughout the city and the Festival, while the rhythms and language of tomorrow will get you out of your seat, on your feet and moving to the beat.



Spiegeltent, Aotea Square



Sat 21 March, 5.30pm



1hr 15mins no interval. All ages event.



BIG HORNS

Musical Director: Dixon Nacey

For a show-stopping Festival finale, look no further than the Super Fly sound of BIG HORNS — live and outta sight. A trailblazing modern-day brass band, this homegrown funk unit is also a veritable party machine, serving up reimagined dancefloor hits from Prince, Beyoncé, Dr. Dre, De La Soul, Kool & the Gang, Marvin Gaye, Earth, Wind & Fire, and more. You won't be able to stop moving to these dirty grooves all night long — trumpeted loud and proud with zero backing tracks and 100% BIG energy. Following their epic Powerstation gig, we can't wait to take these massive horns and the funkier rhythm section to the next level with an Auckland Town Hall mega-concert for the ages. Strut in, look sharp, BIG HORNS — all swagger.



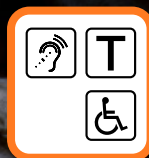
Great Hall, Auckland Town Hall



Sat 21 March, 7.30pm



1hr 30mins no interval. All ages event.



Adult
tickets from
\$ **69**





Daniel Verstappen

WITH THE Aotea Youth Symphony

Belgian-international pianist and composer Daniel Verstappen returns to Aotearoa for this rousing cross-cultural collaboration. Joining forces with the Aotea Youth Symphony, which celebrates its 40th anniversary in 2026, Verstappen will perform a mixture of his own evocative compositions with reimagined film music favourites. Highlighting the richness of community music-making in Aotearoa, this project also expands on the partnership with local talent, a feature of Verstappen's music ambassadorship, along with showcasing his innovation as a classically-trained performer with a vibrant pop sensibility.

📍 **UXBRIDGE, Howick**

📅 **Sat 21 March, 7.00pm***

📍 **Selwyn Village Theatre,
Point Chevalier**

📅 **Sun 22 March, 2.00pm**

KOHA ENTRY

? **1hr 10mins no interval.**
Suitable for all ages.



*Adult
Tickets

\$40



Whānau Friendly

WEEK

3

A celebration of music's power to inspire and connect



St Matthew's Chamber Orchestra Young & Brilliant

SOLOISTS:

SHAN LIU (Piano, 16 years old) • PROKOFIEV PIANO CONCERTO NO. 3, OPUS 26, IN C MAJOR
HAYDEN CHIU (Violin, 16 years old) • WIENIAWSKI VIOLIN CONCERTO NO. 2, OPUS 22, IN D MINOR
DAVID ZHU (Oboe, 15 years old) • LEBRUN OBOE CONCERTO NO. 1 D MINOR

Some of our most acclaimed up-and-coming soloists step into the spotlight alongside Auckland's beloved St Matthew's Chamber Orchestra. Making its Festival debut with a young and brilliant showcase of classical musicianship, the city's oldest chamber orchestra presents not one but three concertos and the world premiere of a specially commissioned work by 20-year-old Tāmaki Makaurau composer and pianist Henry Meng. This is a perfect opportunity to encounter the next generation of classical stars within the timeless and welcoming setting of a St Matthew's concert.

📍 St Matthew-in-the-City

📅 Sun 22 March, 2.30pm

? 2hrs inc interval.

Suitable for all ages.

Children under 12 are free to attend with an accompanying adult.

WEEK
3

Whānau Friendly

Dynamic classical music in the heart of the city



Adult
tickets

\$35





Auckland Art Gallery Toi o Tāmaki

AUCKLAND CBD



8 November 2025 — 15 March

Pop to Present: American Art from the Virginia Museum of Fine Arts

Pop to Present brings together 52 works reflecting eight decades of artistic experimentation and cultural transformation in the United States. Placing iconic names such as Jackson Pollock, Mark Rothko and Andy Warhol in conversation with artists from diverse backgrounds, the exhibition offers a broad and inclusive overview of recent American art. Showcased in *Pop to Present* are abstract paintings, vibrant Pop canvases and hyper-detailed photorealist compositions along with Minimalist sculptures, richly textured pieces inspired by craft and domestic traditions, and contemporary figurative works that explore timely questions of identity, power and representation.

***Exhibition is ticketed. Visit aaf.co.nz for more info.**



Gordon Bennett, *Notes to Basquiat: Volcano II*, 2001.
Courtesy of the Estate of Gordon Bennett.



Artspace Aotearoa

KARANGAHAPE RD



30 January — 11 April

***After the undercurrents* Gordon Bennett & Emily Karaka**

This exhibition brings together the practices of two senior Indigenous painters from Aotearoa and Australia. Gordon Bennett and Emily Karaka's paintings draw on narratives of place, colonialism, popular culture, and Indigenous cosmologies to explore ideas of struggle and belonging. *After the undercurrents* enables audiences to time travel as the artists conjure the deep time of the autua (gods), the recent attacks on Indigenous sovereignty, and heroes from contemporary art history. Through painting the artists question our histories and invite audiences to imagine our futures.



Learn more
about public
programmes
for these
exhibitions

Visit our gallery friends around Tāmaki Makaurau



brunelle dias, *Untitled (study)*, 2025. Image courtesy of the artist.



Kalisolaite 'Uhila, *Kelekele Mo'ui (Living Soil)*, 2024.
Live performance commissioned by
Te Whare Toi o Heretaunga Hastings Art Gallery.
Image courtesy of the artist and Michael Lett Gallery.



Gus Fisher Gallery

AUCKLAND CBD



14 February — 2 May

Dreaming from afar **brunelle dias & Gian Manik**

Dreaming from afar brings together an intimate grouping of artists from Aotearoa and overseas. The exhibition includes a new suite of paintings by Mumbai-born artist brunelle dias made following her travels in Europe. Through a decentring of the figure, dias renders observations of deceptively familiar scenes from elsewhere with those known to her to blur perceptions of origin and place. Melbourne-based artist Gian Manik complicates notions of native and foreign, local and global, self and other, in new paintings that address his interest in the dialectics of Orientalism, and queerness. *The Changing Room* new commissions programme will also be displayed.



Te Uru Waitakere Contemporary Gallery

TITIRANGI



21 February — 17 May

Three solo exhibitions: **Ammon Ngakuru,** **Kalisolaite 'Uhila & Avtar Singh**

Painter and sculptor Ammon Ngakuru (21 Feb — 17 May) investigates how our lived experiences — specifically our engagements with art, history, language and the economy — are influenced by structures of power.

Through durational performance works, Kalisolaite 'Uhila (7 Mar — 17 May) addresses issues such as tradition, masculinity and cultural bias while seeking to promote a sense of understanding and togetherness.

Through entire journals of interest, notably *National Geographic*, Avtar Singh (7 Mar — 3 May) reproduces images and texts as colour-pencil drawings on paper, bringing a visual and artistic lens to scientific study.



Left: Emiko Sheehan, *Māmā Taniwha*, 2023. Image courtesy of the artist.
Right: Gillian Appleby, *Gypsy*, 2025. Image courtesy of the artist.



Te Tuhi's birthday cake designed by Fiona Pardington, 2025.
Photo by Jinki Cambroner.



Learn more
about public
programmes
for these
exhibitions



Homestead Galleries, Corban Estate Arts Centre

HENDERSON



28 February — 18 April

Kia Manahua Te Wāwāhi Tahā Group Exhibition

Front Room

Gillian Appleby & Kelly Reichardt

Kia Manahua Te Wāwāhi Tahā is a group exhibition from the whānau collective initiated by Emiko Sheehan. It explores the unique creative processes at the intersection of art-making and motherhood. The name draws from the whakataukī Tā te tamariki tana mahi wāwāhi tahā, honouring tamariki as taonga who disrupt and inspire.

Presented alongside is *Front Room*, an exhibition by Gillian Appleby and Kelly Reichardt. Their work honours women's overlooked labour, while redefining their space as one of power, imagination and belonging.



Te Tuhi

PAKURANGA



February — March

Te Tuhi's housewarming. Join us!

Join us for a season of house-warming parties, openings, book launches and other events throughout February and March 2026, as Te Tuhi reopens its doors in style.

After a one-off flooding incident closed the gallery in June 2025, the building has undergone what the team like to call an "Extreme Makeover: Gallery Edition" — a renovation that's refreshed the entire space.

From early 2026, everyone is invited back through the doors to get to know Te Tuhi 2.0 — and, most importantly, to reengage with ambitious and exciting contemporary art.

Events to be confirmed.

Visit aaf.co.nz for more info.

Visit our gallery friends around Tāmaki Makaurau



Bound Vol. II (detail), 2024. Image courtesy of the artist.



Shawnee Tekii, *Sky High in the 09*, 2024.
Image courtesy of the artist.



The Arts House Trust, Pah Homestead

HILLSBOROUGH



4 March — 24 May

Morphologies Mickey Smith

Mickey Smith is a master chronicler of libraries, having turned her camera to these repositories of knowledge for over two decades. Her prolific series explore the life cycles of library collections and the labour of those who steward them. *Morphologies* presents insights through work from her long-form documentary *Volume*, plus highlights from *Denudation*, *As You Will: Carnegie Libraries of the South Pacific* and new installation-based artworks. From chained libraries to digitisation, deaccessioning and artificial intelligence, *Morphologies* asks us to consider our evolving relationships with books and the institutions that shape our collective cultural memory.



Studio One Toi Tū

KARANGAHAPE RD



12 March — 9 April

Home, Reframed and other solo exhibitions

Shawnee Tekii — *Home, Reframed* (ends 15 March) reimagines Tāmaki Makaurau through works that blur the line between lived and imagined spaces.

Jessica Miku — *Medieval Magical Girl* blends the sparkle of magical girl anime with medieval chivalry.

Amrit Kaur — *HomeBound* explores memory, migration, and the delicate threads of belonging.

Rachel Anne, Aliyah Hazel Edwards & Destiny Tesese — *Talismans* showcases wearables with personal, cultural and spiritual significance.

Sena Park — *Oops! But...It's OK.* is an installation using works developed during past residencies in Asia.

Cecilia Morera — *Life on Rugs* is a tactile, colour-rich exploration through the medium of hand-tufted rugs.

Core Funders



Creative Partners



Presenting Partner



Experience Partners



Engagement Partners



Accommodation Partner



Sustenance Partners



Operations Partner



Major Funder



Funding Partners



International Partners



Venue Partners



NGĀ MIHI NUI.

A standing ovation for all the Patrons, Donors, Partners and Funders whose generosity lets us bring the work of great artists to this wonderful city.

Your support makes it happen.

Since 2003, Te Ahurei Toi o Tāmaki Auckland Arts Festival has been contributing to the cultural vibrancy of Tāmaki Makaurau by bringing world-class events to our city, sharing the joy of live performance.

But we haven't been doing it alone. As a charitable trust, we are incredibly grateful to our core funders Auckland Council and Creative New Zealand, major funder Foundation North, and the philanthropic support of our Festival patrons, partners, trusts and donors, who help us present this extraordinary event every year.

Work with us to deliver works of scale, showcase Aotearoa artists, commission new work, support international productions, and take the Festival to regions and communities across Auckland.

Visit aaf.co.nz/support for more information on how your support can help make it happen.

The Festival is a registered Charity (CC22145).
Donations are tax deductible.



www.mojo.coffee

@mojocoffeenz

Visit a Mojo and support
**TE AHUREI TOI O TĀMAKI
AUCKLAND ARTS FESTIVAL**



Drink Coffee. Support the Arts.

We've partnered with Mojo
to create the limited-edition
roast **WHAKAAWE** — a blend
of Fazenda Rio Brilhante,
Brazil Notes of Red Apple
and Almond Butter.

For every bag sold, **Mojo will donate \$1** to support
the Festival's Accessibility and Creative Learning initiatives.

Available in
Mojo cafes
and online
mojo.coffee



Become a hero of the Festival.

Our patrons are a passionate group of supporters who generously contribute to the Festival. With their help — and if you're thinking about becoming a patron, yours too — we can keep doing more for the arts and Auckland.

Patrons directly support many of our initiatives — free events, low-cost tickets for families and rangatahi, education for students, accessibility for all — and uplift the mahi behind this important community service.

They also sustain the arts at large. The Festival is an industry leader and integral part of a healthy ecosystem for artists and arts professionals. Their generosity strengthens our role and the immediate future of the performing arts in Aotearoa.

Patrons receive a range of benefits, too, including (but not limited to) a complimentary ticket package, access to a personal booking service, and invites to special social events during the Festival and throughout the calendar year.

Become a Festival Patron today, or learn more about ways to support us:

Phone: **09 309 0989**

Email: **patrons@aaf.co.nz**

Website: **aaf.co.nz/support**



Platinum Patrons

Sir Roderick and Gillian, Lady Deane
Janet Clarke & John Judge
Andrew & Jenny Smith

Silver Patrons

Jeremy Collins Family
Gow Family Foundation
Sir Chris & Lady Dayle Mace
Jo McCahill
The Ruby Effect Trust

Bronze Patrons

John Billington KC
Mark & Angela Clatworthy
Dame Jenny Gibbs
Robert Hucker
Michael Moore & Andrew Gelonese
Sonbol Taefi

Jade Patrons

Jenny Anderson
Frances Bell
Kirsten & Carl Blanchard
Kath Bryant
Graham Cleary
Mark & Lynore Conelly
Colin Ennor & Sergio Lopez
Dale & Joan Furbish
Tracey Haszard & Phil Sargent
Carrie Hobson
David Inns & Sally Woodfield
Jason & Sarah Judkins
Kate & Andrew Liddell
James Little
Dr Lesley McTurk
Nikki Melville-Smith & Ken Jackson
Robyn Millar
Gary & Andrea Noland
Dr James Philpott
Paul Rosnell & Brett Timmins
Shona Roberts & David Hay
Chris Simcock & Camilla Hope-Simcock
Noel Vautier & Kerrin Vautier CMG
Fred & Nicky Ward
Alan G. Wilcock

Amber Patrons

Lindsey Dawson
Peggy & Richard Greenfield
Roy Knill & Alister Hartstonge
Neha Patel
Clare Wynn-Williams



Te Ahurei Toi o Tāmaki Auckland Arts Festival is a melting pot of shared experiences, whakaaro, live entertainment and kōrero every March.

For the love and vibrancy of Tāmaki Makaurau, we celebrate the best of arts and culture, for the people of this diverse city, by artists doing incredible things from Aotearoa and around the world.

Ko ngā mahinga toi whānui me te ahurea ki Tāmaki Makaurau o nāianei te pūmanawa o te Ahurei.

The Festival's lifeblood is arts and culture in contemporary Tāmaki Makaurau. We care deeply about celebrating artists and their kaupapa, serving the creatives and communities behind the works we present, honouring te reo and te ao Māori in all that we do, and contributing to a better city and society. That's us. Koia pū!

Every March you'll see a big reunion with our city's arts community — many of whom we consider our whānau whānui, our extended family — alongside our mahi towards better accessibility and education opportunities for our audiences. We're also passionate about the works we curate and our collaboration with the many people who make those experiences happen. We strive to celebrate with generosity; human connection and manaakitanga will always be at the heart of what we stand for.

When we're on, we're on a mission to make Auckland an amazing place to socialise and be entertained in. Whether you're discovering the city for the first time or rekindling your love for its hidden gems, we truly believe that the Festival has something for everyone.

Te Poari Kaitiaki Festival Board

Sarah Judkins (Chair)
Kirsten Blanchard
Jack Bourke
Angela Clatworthy
Evan Davies
Eleshea D'Souza
Michael Moore
Graham Tipene
Fred Ward
Angela Watson

Founding Friends

Adrian Burr
Graeme Edwards
Jan Farmer
Friedlander Foundation
Dame Jenny Gibbs
Sir Chris & Lady Dayle Mace

Te Reo Māori Translators

Stephanie Huriana Fong
— PAE TŪ LTD

Hēmi Kelly — TAUTIKA LTD
Pānia Papa — TAKATŪ LTD

Mandarin & Samoan Translators

The Translation Service,
Dept of Internal Affairs

Brand Identity courtesy of

Colenso BBDO

Publicity

818



The Auckland Festival Trust

Ph +64 09 309 0989

Email info@aaf.co.nz

Ground Floor
48 Greys Avenue
Auckland Central 1010

**Kaiwhakahaere Matua
Chief Executive**

Robbie Macrae

**Kaitohu Toi
Artistic Director**

Bernie Haldane

Kaihautū Māori

Ataahua Papa

Pou Tikanga

Eynon Delamere

**Tumu ā-Pakihi, ā-Pūtea
Head of Business & Finance**

Vanessa Zigliani

**Tumu Hangarau,
Whakaaturanga
Head of Technical &
Production**

Nick Tomlin

**Tumu Whakatairanga,
Whakapānga
Head of Marketing &
Communications**

Caroline Everitt

**Tumu Hōtaka
Head of Programming**

Karoline Bjune

**Tumu Piringa Mōwaho
Head of Partnerships &
Development**

Colleen Edwards

**Kaihoahoa Matua,
Kaiwhakahaere Waitohu
Senior Designer &
Brand Manager**

Tim Wong

**Kaihāpai Hōtaka
Programme Administrator**

Jillian Davey

**Kaiwhakahaere
Whakatairanga, Matihiko
Marketing & Digital Manager**

Monique Doy

**Kaiāwhina Tāhūhū
Executive Assistant**

Jade McCann

**Kaihāpai Kaute, Rārangi Utu
Accounts &
Payroll Administrator**

Amanda Salter

**Kaiwhakarite Hōtaka
Producer**

Posenai Mavaega

**Kaiwhakahaere Hōtaka,
Kaiwhakarite Hōtaka
Programme Manager &
Producer**

Tate Fountain

**Kaiwhakahaere
Ringatoi, Taipitopito
Artist & Logistics Manager**

Megan Andrews

**Kairuruku Hōtaka —
Kia Wātea, Kia Whai Wāhi
Programme Coordinator —
Access & Inclusion**

Hannah Slade

**Kairuruku Hōtaka —
Ako Auaha**

**Programme Coordinator —
Creative Learning**

Maria Williams

**Kaihāpai Hōtaka
Programme Administrator**

Pennie Chang

**Kaiwhakahaere Tikiti
Ticketing Manager**

India Rose Kohika

**Tāhūhū Whakatairanga,
Matihiko
Marketing &
Digital Executive**

Manaia Tito-Lyndon

**Kaiāwhina Kaihoahoa
Graphic Designer**

Camila Araos Elevancini

**Kaihāpai Hangarau
Technical Administrator**

Adeline Shaddick

**Kaiwhakahaere Kaupapa
Production Managers**

Emmanuel Reynaud

Hannah Moore

**Kaiwhakahaere Kōkiritanga
Operations Manager**

Charlotte Crone

**Tumu Whakarite Oro
Head of Sound**

Sandy Gunn

**Tumu Whakarite Rama
Head of Lighting**

Spencer Earwaker

**Tumu Ataata-Rongo
Head of AV**

Simon Barker

**Mataaro Hiko
ā-Whakaaturanga
Production Electrician**

Dan Quayle

**Pūkenga Oro Matua
Senior Audio Technician**

Sam Clavis

**Tumu Waihanga
Head Rigger**

Audrey Morgan

**Kāmura
Carpenter**

Charlie Hornsby

**Tumu Kākahu
Head of Wardrobe**

Penny Pratt

**Kaiwhakahaere Wāhi —
Aotea Te Papa Tū Wātea
Site Manager —**

Aotea Square

Graham Colvan

**Kairuruku Utauta Puoro
Backline Coordinator**

Jeremy Fitzsimons

Learn more
about
working or
volunteering
at the Festival



STAY REFRESHED. STAY INSPIRED.

Proud Sponsor of Te Ahurei Toi o Tāmaki
AUCKLAND ARTS FESTIVAL

New Zealand's
original organics



Here for good
since 1986

@phoenixorganics

Image credits and additional acknowledgements.

Page 3 — *Ten Thousand Hours*. Image credit: Millissa Martin. **Page 5** — *Sau Fiafia! Boogie Down!* Image credit: Island Vibes photographed by Aisea Latu. **Page 6** — Festival Garden in Aotea Square and DJ Giddy (inset). Image credits: Jinki Cambroner. **Page 7** — Heart Tāmaki installation and Mauri Stone (inset) in Aotea Square. Image credits: Jinki Cambroner, John Rata (inset). **Page 8** — *Macbeth*. Image credit: RNZB Principal Ana Gallardo Lobaina and Soloist Branden Reiners photographed by Ross Brown. **Page 11** — *Music Portrait of a Humble Disabled Samoan*. Image credit: Oscar Kightley, Sasha Gibb, Neil Ieremia, Nathaniel Lees and Fonoti Pati Umaga photographed by Lou Hatten. **Page 14** — *WET*. Image credit: Bronwyn Turei photographed by Andi Crown. **Page 15** — *Werewolf*. Image credit: Joel Baxendale, Hannah Kelly and Stella Reid photographed by Mouce Young. **Page 17** — *Waiora Te Ūkaipō The Homeland*. Image credit: Tioreore Ngatai-Melbourne photographed by Tony Drayton. **Page 18** — *Julia Bullock with Auckland Philharmonia*. Image credit: Julia Bullock photographed by Allison Michael Orenstein. **Page 21** — *ONO with Moana & the Tribe*. Image credits: Scotty Morrison, Moana Maniapoto and Paddy Free photographed by Black Pearl Ltd; Kaumakaiwa Kanaka'ole (inset, left) photographed by Ku'ehu Mauga; Shellie Morris (inset, right) photographed by Wayne Quilliam. **Page 23** — *Whānau Day*, Aotea Square, 9 March 2025. Image credits: John Rata. **Page 25** — *A Place in the Sultan's Kitchen (Or How to Make the Perfect One-Pot Chicken Curry)*. Acknowledgement: A Merrigong Theatre Company production, supported by Creative Australia, Create NSW and Wollongong City Council. This project was supported through the Giving Program by Carolyn Vincent · Ubuntu Foundation. Image credit: Children of the Revolution. **Page 26** — *Duck Pond*. Acknowledgement: Co-commissioned by QPAC and The Arts Center at NYU Abu Dhabi, The Art House Wyong, Frankston Arts Centre, HOTA · Home of the Arts, Merrigong Theatre Company and Orange Civic Theatre. Circa acknowledges the assistance of the Australian Government through Creative Australia, its principal arts investment and advisory body and the Queensland Government through Arts Queensland. Image credit: Damien Bredberg. **Page 29** — *The Butterfly*

Who Flew Into The Rave. Image credit: Lucy Lynch, Oli Mathiesen and Sharvon Mortimer photographed by Matt Hurley. **Page 30** — *Bluebeard's Castle*. Image credit: Susan Bullock and Lester Lynch photographed by Latitude Creative. **Page 32** — *He Kākano: Becoming Jeff Bezos, Marmite & Honey*. Image credits: Alex Medland and Rainton Oneroa, supplied. **Page 33** — *In Your Neighbourhood: String Quartets*. Image credit: Ashley Brown, Andrew Beer, Minglun Liu and Robert Ashworth photographed by Thomas Hamill. **Page 34** — *27 Club*. Image credit: Saige Prime. **Page 37** — *The Visitors*. Image credit: cast photographed by Stephen Wilson Barker & Red Handed Productions. **Page 39** — *Sincere Apologies*. Acknowledgement: Supported by the Victorian Government through Creative Victoria, supported by the City of Melbourne Arts Grants, and assisted by the Australian Government through Creative Australia, its principal arts investment and advisory body. This project was developed with support from Vitalstatistix. Image credit: Lucy Parakhina. **Page 41** — *Ten Thousand Hours*. Acknowledgement: Gravity & Other Myths is supported as an organisation by Arts South Australia. *Ten Thousand Hours* has been assisted by the Australian Government through Creative Australia, its principal arts investment and advisory body. Image credit: cast photographed by Nikola Milatovic. **Page 42** — *Shanghai Symphony Orchestra*. Image credit: Cai Leilei. **Page 45** — *Ihi. Wehi. Mana*. Image credits: Te Waka Huia photographed by Te Matatini Enterprises; Karen Grylls (inset), supplied. **Page 46** — *He Manu Tioriori*. Image credits: Muroki photographed by Ezra Simons; Jordyn With a Why, supplied; MOHI photographed by TrudyStyle. **Page 49** — *BIG HORNS*. Image credit: Leonie Moreland. **Page 50** — *Daniel Verstappen with the Aotea Youth Symphony*. Image credit: Daniel Verstappen, supplied. **Page 51** — *St Matthew's Chamber Orchestra: Young & Brilliant*. Image credits: Shan Liu, Hayden Chiu, David Zhu and Henry Meng, supplied. **Page 60** — Festival artist pōwhiri, Aotea Square, 5 March 2025. Image credit: John Rata. **Page 52** — *Pop to Present: American Art from the Virginia Museum of Fine Arts*. Acknowledgement: Organised by the Virginia Museum of Fine Arts and supported by the Auckland Art Gallery Foundation.

Our commitment to accessibility.

We believe everyone should have access to extraordinary arts.

Most of our Festival venues have hearing loops, are wheelchair accessible and have accessible toilets and carpark.

We work with representatives from Deaf and disabled communities to identify the shows that are most suitable for audio description, NZSL interpretation and relaxed performances.

Our award-winning* accessibility initiative provides low-cost tickets to members of our Deaf and disabled communities. The ticket for their companion is provided for FREE.

A key to accessibility icons on each event page in this Festival Guide can be found on **page 1**. For more information, visit **aaf.co.nz/access**.

? **Accessibility Bookings & Enquiries**

Email: **access@aaf.co.nz**

Phone or Text: **022 1239 759**

NZ Relay Service: **nzrelay.co.nz**

Accessible Booking Forms &

Ticket Information: **aaf.co.nz/access**

Accessibility supported by



Four Winds
FOUNDATION

With support from



With support from
Platinum Patrons
Andrew &
Jenny Smith



Creative Learning at the Festival.

Toi Ako, Toi Auaha, Toi Ora.
Learning and creativity for the wellbeing of the arts.

Our lineup of shows for schools and students aims to reach tamariki and adult learners throughout the motu, making the arts accessible and fostering a desire to learn, appreciate and participate.

Both special matinees and public performances are made available exclusively to schools and teachers in Tāmaki Makaurau, many with FREE ticketing allocations, and can be booked directly through us.

To learn more about our FREE schools tickets, matinees, pre/post-show talks, outreach/workshop opportunities, or education packs to link to your curriculum, visit **aaf.co.nz/education**.

? **Creative Learning Bookings & Enquiries**

Email: **education@aaf.co.nz**

Website: **aaf.co.nz/education**

Creative Learning supported by



Four Winds
FOUNDATION

With support from



With support from
Platinum Patrons
Sir Roderick &
Gillian, Lady Deane



WHAT'S ON WEEK 1, 5—8 March	WHERE	PAGE		THU 5	FRI 6	SAT 7	SUN 8
Sau Fiafia! Boogie Down!	Aotea Square	4	FREE	5.30pm	.	.	.
Festival Garden & ROVA Sound Stage	Aotea Square	6	FREE				
La Ronde	Spiegeltent, Aotea Square	12		8.00pm	6.00pm & 9.00pm	6.00pm & 9.00pm	5.00pm
Waiora Te Ūkaipō The Homeland	ASB Waterfront Theatre	16		.	7.00pm preview	2.00pm & 7.00pm	4.00pm
WET	Te Pou Theatre	14		7.30pm preview	7.30pm	7.30pm	4.00pm
Macbeth	Kiri Te Kanawa Theatre, Aotea Centre	8	Opens Wed 4 March, 7.30pm	7.30pm	7.30pm	1.30pm & 7.30pm	.
Music Portrait of a Humble Disabled Samoan	Rangatira, Q Theatre	10		7.30pm	7.30pm	2.00pm & 7.30pm	2.00pm
Werewolf	Loft, Q Theatre	15		8.00pm	8.00pm	8.00pm	3.30pm
Julia Bullock with Auckland Philharmonia	Great Hall, Auckland Town Hall	18		.	.	7.00pm	.
Whānau Day	Aotea Square	23	FREE	.	.	.	10.00am to 4.00pm
ONO with Moana & the Tribe	Great Hall, Auckland Town Hall	20		.	.	.	7.00pm

Plan your Festival.

Planning a night of fun, a big weekend out or a whole 18 days of Festival immersion? For more information to help you curate your Festival experience, visit aaf.co.nz/info.

Online you'll find FAQs, venue access and locations, public transport advice, accessible parking notes, plus a guide to our favourite bars, restaurants and accommodation providers.

City Encounters

Circus & Cabaret

Music

Theatre

Dance

Kapa Haka & Choir

Visual Arts

Festival Garden & ROVA Sound Stage

Aotea Square

6



La Ronde

Spiegeltent,
Aotea Square

12

8.00pm

8.00pm

8.00pm

6.00pm
&
9.00pm

6.00pm
&
9.00pm

6.00pm

**Waiora Te Ūkaipō
The Homeland**

ASB Waterfront
Theatre

16

7.00pm

7.00pm

7.00pm

8.00pm

8.00pm

4.00pm

WET

Te Pou Theatre

14

7.30pm

7.30pm

7.30pm

7.30pm

7.30pm

4.00pm

**A Place in the
Sultan's Kitchen**

Rangatira,
Q Theatre

24

.

.

6.30pm

6.30pm

2.00pm
&
6.30pm

3.00pm

Duck Pond

Kiri Te Kanawa
Theatre,
Aotea Centre

26

.

.

7.30pm

7.30pm

7.30pm

5.00pm

**The Butterfly Who
Flew Into The Rave**

Rangatira,
Q Theatre

28

.

.

9.00pm

9.00pm

9.00pm

.

Bluebeard's Castle

Great Hall,
Auckland Town Hall

30

.

.

.

7.30pm

7.30pm

.

**He Kākano
Becoming Jeff Bezos**

Loft,
Q Theatre

32

.

.

.

7.00pm

5.00pm

.

**He Kākano
Marmite & Honey**

Loft,
Q Theatre

32

.

.

.

.

7.00pm

3.00pm

Choose your tickets.

Booking online is the fastest and easiest way to purchase your Festival tickets. Click on the **Buy Now** button on any aaf.co.nz event page to be taken through to an official ticketing provider.

Some venues offer phone, email and in-person booking services. For more information, visit aaf.co.nz/tickets.

WHAT'S ON
WEEK 3, 16—22 March

WHERE

PAGE

TUE
17

WED
18

THU
19

FRI
20

SAT
21

SUN
22

Festival Garden & ROVA Sound Stage

Aotea Square

6



La Ronde

Spiegeltent,
Aotea Square

12

8.00pm

6.00pm

9.00pm

6.00pm

8.00pm

5.00pm

**Waiora Te Ūkaipō
The Homeland**

ASB Waterfront
Theatre

16

7.00pm

7.00pm

7.00pm

8.00pm

2.00pm
&
8.00pm

4.00pm

27 Club

Spiegeltent,
Aotea Square

34

.

9.00pm

6.00pm

9.00pm

.

.

Sincere Apologies

Loft,
Q Theatre

39

.

.

6.00pm

6.00pm

6.00pm

4.00pm

The Visitors

Rangatira,
Q Theatre

36

.

.

7.00pm

7.00pm

2.00pm
&
7.00pm

3.00pm

Ten Thousand Hours

The Civic

40

.

.

7.30pm

7.30pm

11.00am
&
7.30pm

2.00pm

**Shanghai Symphony
Orchestra**

Great Hall,
Auckland Town Hall

42

.

.

7.30pm

7.30pm

.

.

Ihi. Wehi. Mana.

Kiri Te Kanawa
Theatre,
Aotea Centre

44

.

.

.

7.00pm

3.00pm

.

He Manu Tioriori

Spiegeltent,
Aotea Square

46

.

.

.

.

5.30pm

.

BIG HORNS

Great Hall,
Auckland Town Hall

48

.

.

.

.

7.30pm

.

**Discover so
much more.**

Stay active on aaf.co.nz and our social channels for the latest Festival announcements, including updates to our City Encounters lineup, Visual Arts public programmes and ROVA Sound Stage music schedule.

WHAT'S ON MUSIC around Tāmaki	WHERE	PAGE	WHEN
In Your Neighbourhood String Quartets	St Luke's Church, Remuera; Holy Trinity, Devonport; St Heliers Church & Community Centre	33	Mon 16 March, 6.30pm Tue 17 March, 6.30pm Thu 19 March, 6.30pm
Daniel Verstappen with the Aotea Youth Symphony	UXBRIDGE, Howick; Selwyn Village Theatre, Point Chevalier	50	Sat 21 March, 7.00pm Sun 22 March, 2.00pm
St Matthew's Chamber Orchestra Young & Brilliant	St-Matthew's-in-the-City	51	Sun 22 March, 2.30pm

WHAT'S ON VISUAL ARTS around Tāmaki	WHERE	PAGES 52—55	WHEN
<i>Pop to Present: American Art from the Virginia Museum of Fine Arts</i>	Auckland Art Gallery Toi o Tāmaki		8 Nov 2025 — 15 March
<i>After the undercurrents</i> Gordon Bennett & Emily Karaka	Artspace Aotearoa	FREE	30 January — 11 April
<i>Dreaming from afar</i> brunelle dias & Gian Manik	Gus Fisher Gallery	FREE	14 February — 2 May
Ammon Ngakuru, Kalisolaite 'Uhila & Avtar Singh	Te Uru Waitakere Contemporary Gallery	FREE	21 February — 17 May
<i>Kia Manahua Te Wāwāhi Tahā & Front Room</i>	Homestead Galleries, Corban Estate Arts Centre	FREE	28 February — 18 April
Te Tuhi's housewarming. Join us!	Te Tuhi	FREE	February — March
<i>Morphologies</i> Mickey Smith	The Arts House Trust, Pah Homestead	FREE	4 March — 24 May
<i>Home, Reframed</i> and other solo exhibitions	Studio One Toi Tū	FREE	12 March — 9 April



TE AHUREI TOI O TĀMAKI
AUCKLAND
ARTS FESTIVAL

**FESTIVAL
CALENDAR**





18 unforgettable days and nights.
For the ❤️ of **TĀMAKI MAKĀURAU.**

