



VINALIFT
Lifting your dream

VIETNAM STEEL STRUCTURES AND LIFTING EQUIPMENT JSC

Head Office - Ha Noi City:

Address: 5th floor, SME Royal Building , Cau Do Street, Ha Dong Ward, Ha Noi City, Viet Nam.

Contact number: +84.2436.419.469

Website: www.vinalift.vn

Email: info@vinalift.vn

HAI PHONG Factory (Registered address)

Address: Plot A1, Phuc Dien Industrial Zone, Mao Dien Ward, Hai Phong City, Viet Nam.

Phone : +84.2203.545.002

Email: info@vinalift.vn

Japan Partner

Nippon Denka Kogyosho Co., Ltd.

1-4-8, Fukushima, Fukushima-ku, Osaka 553-0003, Japan

Tel: +81-6-6458-5621

VINALIFT
Lifting your dream

**COMPANY
PROFILE**



www.vinalift.vn

CONTENT

02	CONTENT
03	FOREWORD
04	MILESTONE - VINALIFT
06	OUR CORE VALUE, VISION AND MISSION
08	TECHNOLOGY CAPACITY
10	SERVICES
13	PRODUCTS
17	PORT HANDLING CRANE
27	CONSTRUCTION CRANE
34	CRANES FOR HYDROLIC POWER PLANT AND THERMAL POWER PLANT
41	CRANE FOR SHIPYARD
44	CRANE FOR STEEL MILL
47	GENERAL CRANES
51	ACCESSORIES FOR THE SHIP-ENGINE-BUILDER
54	WORLD MAP
56	CERTIFICATION
57	PARTNERS & CUSTOMERS

FOREWORD

Vietnam Steel Structures and Lifting Equipments Joint Stock Company (VINALIFT) would like to express our gratitude to the customers whom we have a luck to get in touch through this catalogue.

Being on the way of development since 2006, VINALIFT has being well known as the domestic leading lifting equipment supplier; and our name tag has been appeared to some locations onto the world's map.

VINALIFT always brings the Customer's Trust and the Confidence as our top priorities and the driving force. We provide the supplying package (turnkey package): consulting the solution, preparing the design adapting to the customer's requirements, delivering the equipment to the site and commencing the load test in order to make sure the equipment is ready to use once completing.

We understand that the human resources is a key which leads us to the acquired achievement as well as the future development; almost 200 engineers and workers are working tirelessly and dedicatedly to contribute to the company's strategy achieved.

Last but not least, it is you, our valued customer who are continuously supporting and believing in us shall be together with us to make a better organization and spread the Vietnamese business spirit to all over the world.



MILESTONE - VINALIFT

VINALIFT becam the exclusive distributor for the leading hoists suppliers of the European GHSA Hoist (Spain)

2015

VINALIFT supplie successfully Gantry Crane 150/150 Ton

2014

VINALIFT became the exclusive distributor for the leading hoists suppliers of the Asia Sungdo Hoist (South Korea)

2013

Awarded contract with EPC contractor: Hyundai E&C, Daewoo E&C, Hyundai Heavy Industrial and Munck Cranes, which marked us on the global market.

2011 – 2015

VINALIFT acquired the ISO 9001-2008 by DQS Holding GmbH

2010

Supply successfully the gantry crane 100/100 Ton – Song Thu Shipyard

2008

The factory completed / Area square: 20.000m²

2007

Vietnam Steel Structures and Lifting Equipments Joint Stock Company established.

2006

VINALIFT acquired the ISO 14000 ISO 45001

2025

VINALIFT acquired the EN 1090 - 1 EN 1090 - 2

2023

Auto operation crane for wte

2022

VINALIFT widened its market to Canada

2021

VINALIFT widened its market to America

2019

VINALIFT acquired the ISO 9001-2015

2018

VINALIFT run the offices internationally Japanese Branch and Korean Branch.

2017

VINALIFT supplied successfully Portal Crane 30T x 25 M to project of X52 Shipyard and run the Branch Office in HO CHI MINH City.

2016

MILESTONE - VINALIFT





VISION

VINALIFT becomes an international manufacturer of non-standard upgrading equipment, creating a Vietnamese brand, demonstrating Vietnamese wisdom and pride.



MISSION

VINALIFT committes to providing international quality non-standard lifting equipment, upholding the spirit of cooperation and development, becoming a "reliable companion" of partners.



CORE VALUES

VINALIFT committes to protect the faithfulness of customers, suppliers and employees.

TECHNOLOGY CAPACITY

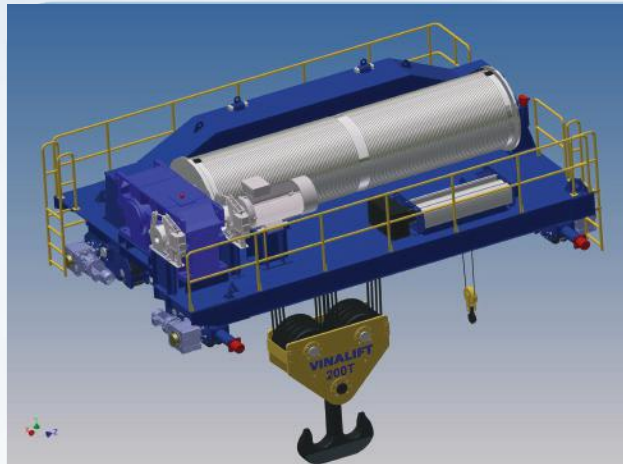
VINALIFT owns the factory, area 20,000 m² at Phuc Dien Industrial zone, Hai Phong city, with sufficient machines for the complete production line: CNC Plasma Cutting machine, welding machine, air compressor, boring machine, drilling machines, lathe machine, shotblasting system, saw machine, lifting equipment: overhead crane, semi gantry crane, gantry cranes with capacity from 5T to 30T in the production line...



PRODUCTION CAPACITY



01 CONSULTING DESIGN THE SYSTEM OF EQUIPMENT



WE CUSTOMIZE THE DESIGN TO THE CUSTOMER'S NEED ACCORDING TO THE INTERNATIONAL AND NATIONAL STANDARDS:

FEM 1.001
CMAA No.70
AWS D1.1-2015
ISO 8501-1

SSPC-SP10
TCVN 4244:2005
EN 1090

02 FABRICATE THE STEEL STRUCTURES, TYPES OF LIFTING EQUIPMENT



FABRICATE STEEL STRUCTURES AND LIFTING EQUIPMENT:

The quality control system 9001:2015 is apply in our working procedures.

The production line is equipped with machines and faculties for stable quality assurance.

03 DESIGN SOFTWARE



AUTO-CAD



INVENTOR



SAP2000



ANSYS



SKETCHUP

04 TRANSPORTATION AND ERECTION



FABRICATE STEEL STRUCTURES AND LIFTING EQUIPMENT:

The quality control system 9001:2015 is apply in our working procedures.

The production line is equipped with machines and facilities for stable quality assurance.

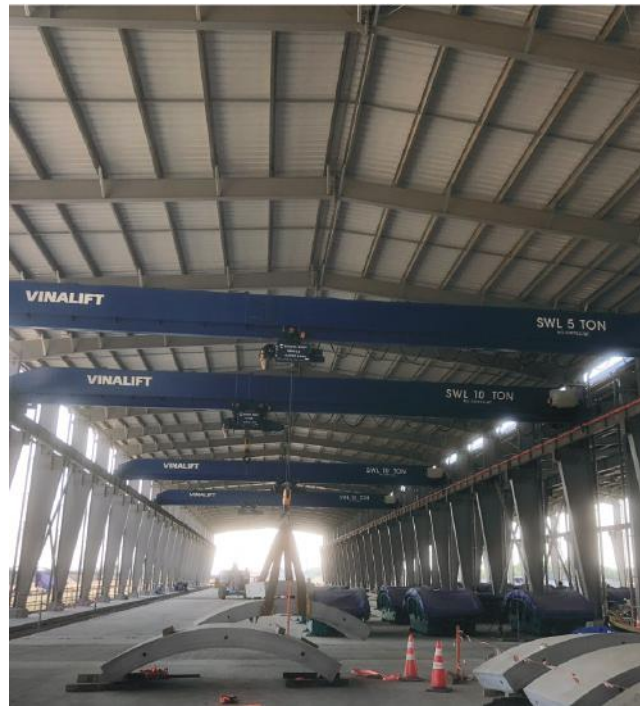
05 MAINTAIN THE EQUIPMENT



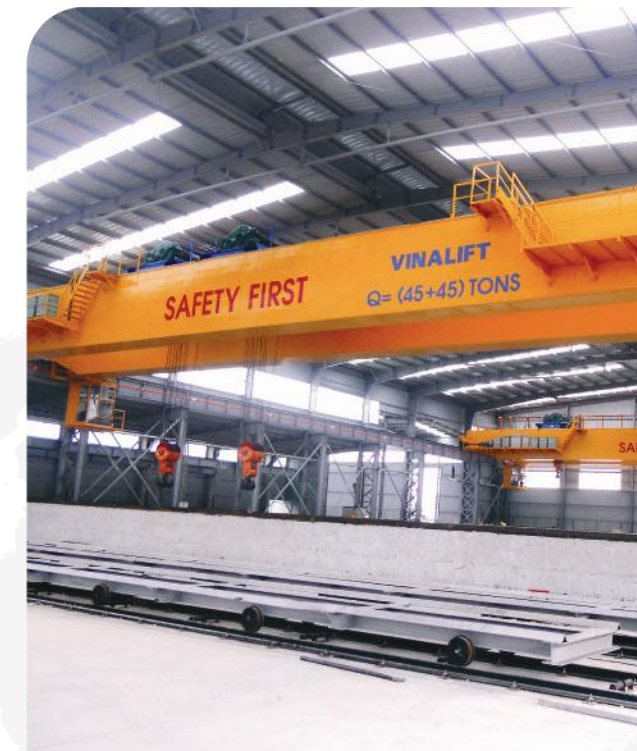
MAINTENANCE THE EQUIPMENT

Taking the advantage of a professional crane manufacturer, we offer the maintain package to the customer which their equipment is taken care during operation.

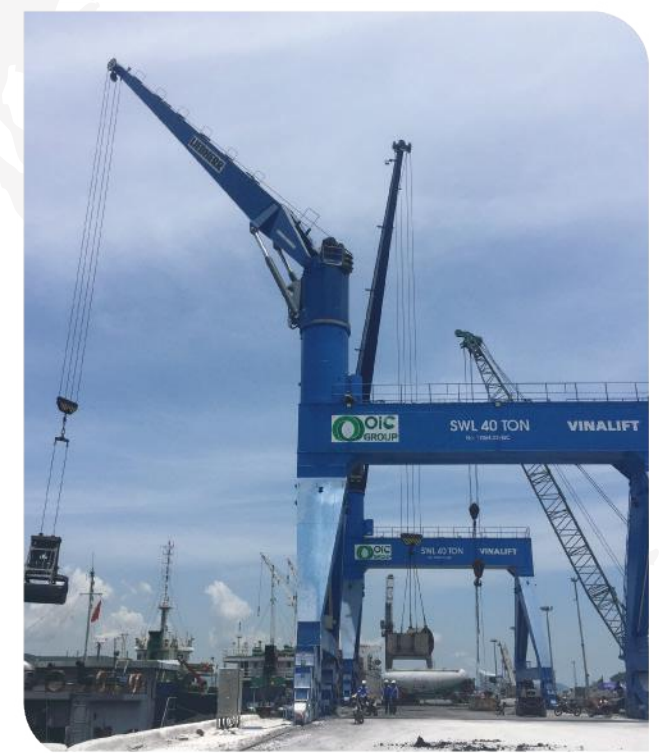
06 COMMENCE THE LOAD TEST AND PROVIDE THE LICENSE FOR THE LIFTING EQUIPMENT.



01 STANDARD LIFTING HOIST



02 PORTAL CRANE



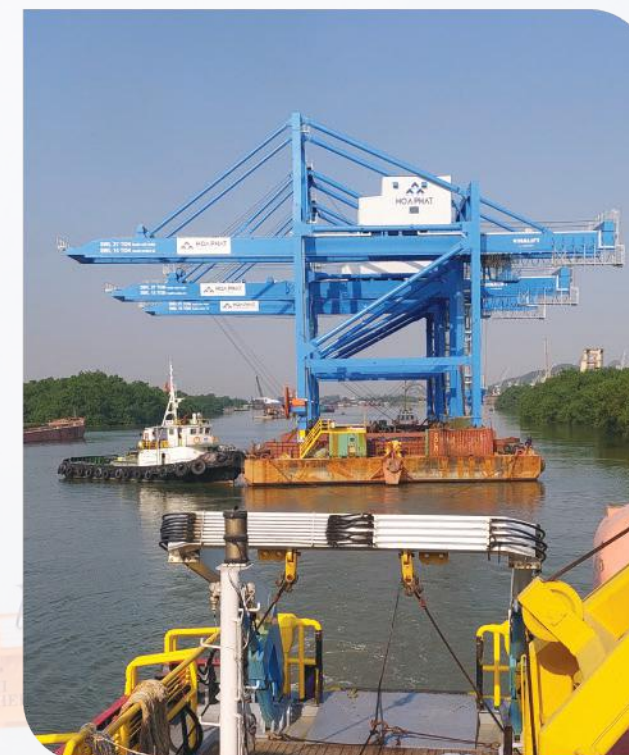
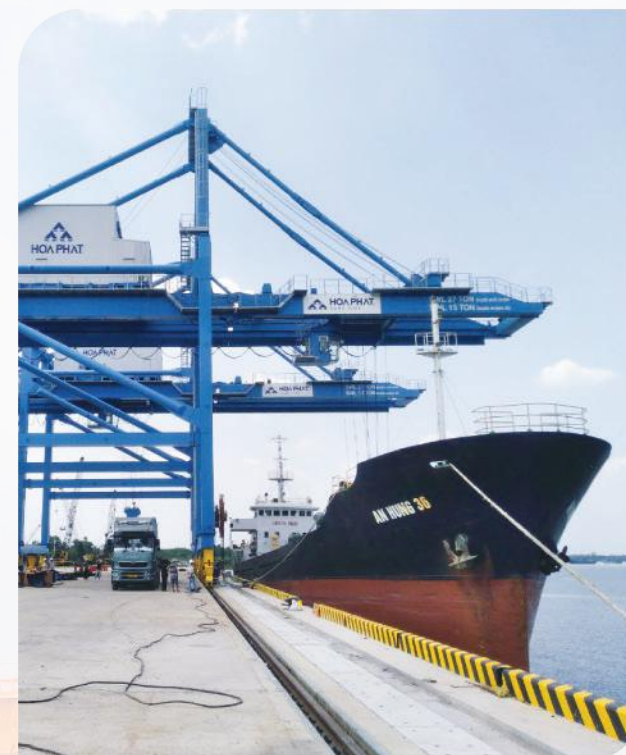
03 OVERHEAD CRANE



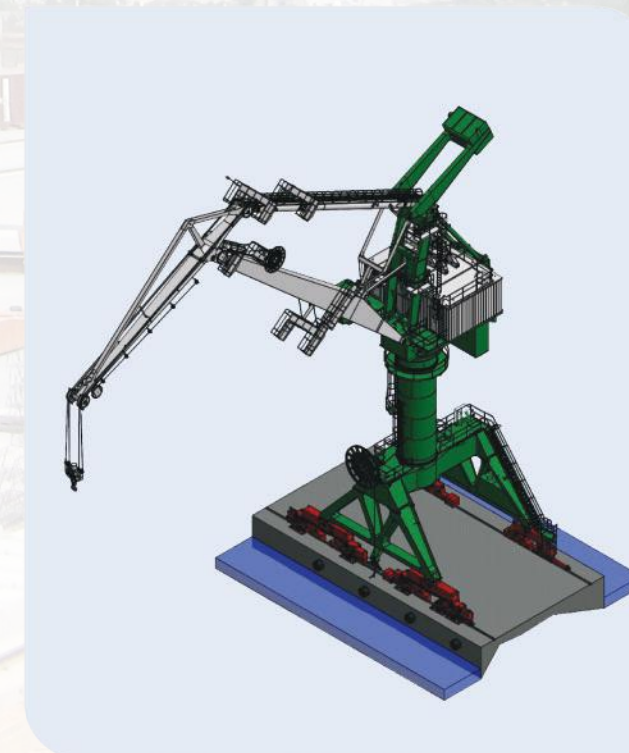
04 GANTRY CRANE AND SEMI GANTRY CRANE



05 STS, QC CRANE



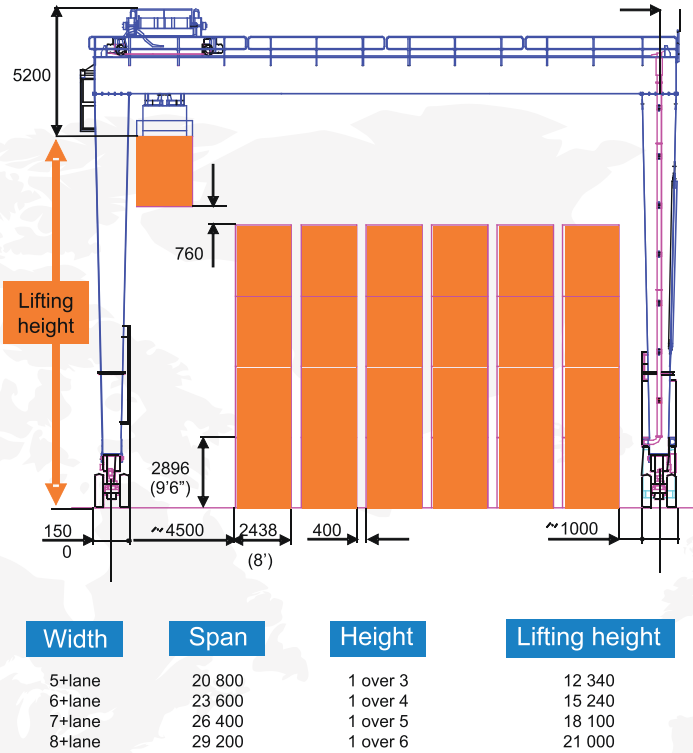
06 LEVEL LUFFING CRANE : LLC



07 RUBBER TYRED GANTRY CRANE



Dimensions



08 VINALIFT OPEN WINCH



01 NHA TRANG CITY – MIDDLE OF VIETNAM



PORT HANDLING CRANE | X52

- Lifting capacity: 30 Ton
- Out reach: 12m -25m
- Rotate 360 degree



02 HAI PHONG | FLAT PORT | 45 TON X 38M



03 CAMBODIA PHNOM PENH PORT | 40 TON X 29.5M



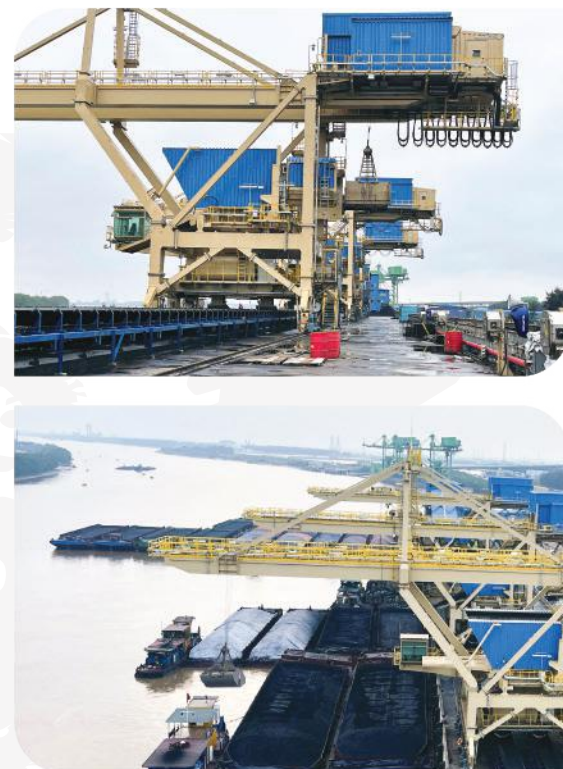
04 HUE | CHAN MAY PORT | 45 TON X 30M



05 HOA PHAT, NHON TRACH PORT | 32 TON X 27M



06 THAI BINH 2 TPP | 350 TON/ HOUR



07 CA MAU PROVINCE – SOUTH OF VIETNAM



MATERIAL HANDLING FOR
GAS-POWER-FERTILIZER COMPLEX
PORTAL CRANE

- Gantry crane – Double girder: 5T
- Cantilever: (4+7+15)M
- Lifting height: Above the rail: 6.5m,
Under the rail: 5m.

08 BA RIA - VUNG TAU PROVINCE – SOUTH OF VIETNAM

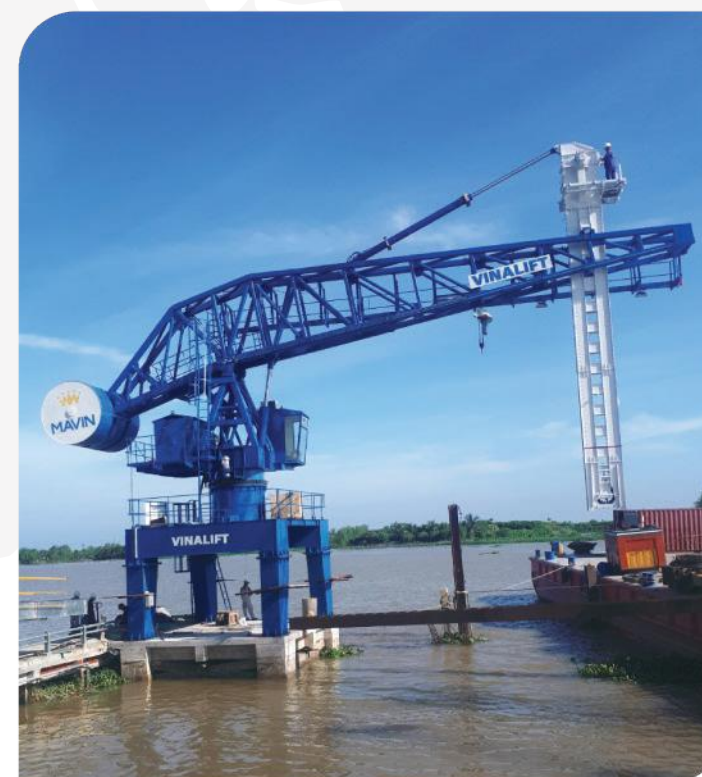


PORT HANDLING |
HYDRAULIC PORTAL CRANE

- Lifting capacity: 25 ton
- Out reach: 4-36m
- Lifting height: 32m



09 DONG THAP PROVINCE – SOUTH OF VIETNAM



MATERIAL HANDLING FOR FEED
INGREDIENT FACTORY

- Working capacity: 300T per hour
- Out reach: 14m
- Horizontal rotation: 90 degree
- Vertical rotation: 30 degree



PORT HANDLING CRANE

10 THANH HOA PROVINCE – NORTH OF VIETNAM | DAI DUONG PORT



MATERIAL HANDLING FOR MINERAL PRODUCTS | PORTAL CRANE

- Lifting capacity: 40T
- Out reach: 3.5m to 29.5m
- Rotation speed: 0~0,8 rpm



PORT HANDLING CRANE

11 NGHE AN | NGHI THIET PORT | VISSAI



MATERIAL HANDLING CRANE

- Lifting capacity: 30
- TonArm reach: 30m
- Rail span: 10.5m
- Capacity handling: 650 ton/h



12 NGHE AN - SONG LAM PORT



TCC 230 MATERIAL HANDLING CRANE

- Lifting capacity: 45T
- Maximum reach with hook: 29.5m
- Rail span: 14.6m



13 BA RIA VUNG TAU - LONG SON INTERNATIONAL PORT



TTC 280 CONTAINER HANDLING CRANE

- Lifting capacity: 45T
- Maximum reach with hook: 38m
- Rail span: 18m



14 PHNOM PENH AUTONOMOUS PORT



HANDLING CRANE

- Lifting capacity: 40T
- Maximum reach: 29.5m

15 SOWATCO LONG BINH PORT



HANDLING CRANE

- Lifting capacity: 40T
- Maximum reach: 29.5m

01 HUYNDAI E&C - MYANMAR



165-TON DOUBLE GIRDER GANTRY CRANES

- Lifting capacity: 165T
- Span: 15m
- Lifting height: 10m



02 HO CHI MINH CITY – SOUTH OF VIETNAM | METRO LINE 01



**METRO LINE CONSTRUCTION
GANTRY CRANE**

- Lifting capacity: 50T
- Span: 31.5m
- Lifting height: 12m

03 HAI PHONG CITY – NORTH OF VIETNAM



**BRIDGE CONSTRUCTION |
GANTRY CRANE**

- Lifting capacity: 90T
- Span: 36m
- Lifting height: 18m

04 DUBAI, UAE



METROLINE CONSTRUCTION

- Lifting capacity: 126T
- Span: 33m
- Lifting height: 14.5m



05 THE U.S.A – NORTH CAROLINE



BRIDGE BUILDING | GANTRY CRANE

- Lifting capacity: 63T
- Span: 18.5m
- Lifting height: 17.3



06 BANGKOK - THAILAND



PRE-CASTING YARD | BANGKOK | THAI LAN

- Gantry crane 150 ton
- Span 40m - 2 set
- Gantry crane 25 ton
- Span 33m - 4 set



07 SMCC - PHILIPINE



PRE-CASTING YARD | PHILIPINE

- Gantry crane 90 ton
- Span 36m - 2 set



08 SMCC - BANGLADESH

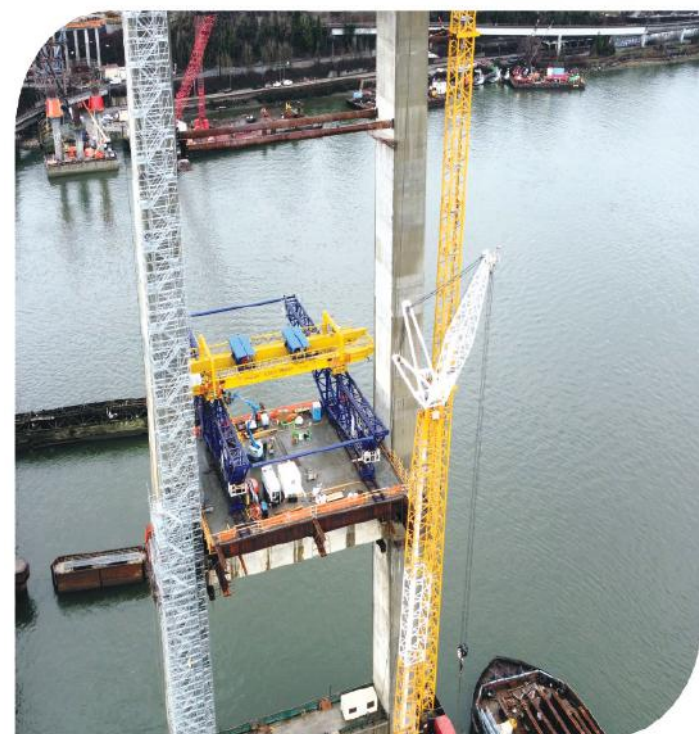


STEEL PIPE YARD | BANGLADESH

- Gantry crane 35 ton,
- Span 33m - 2 set

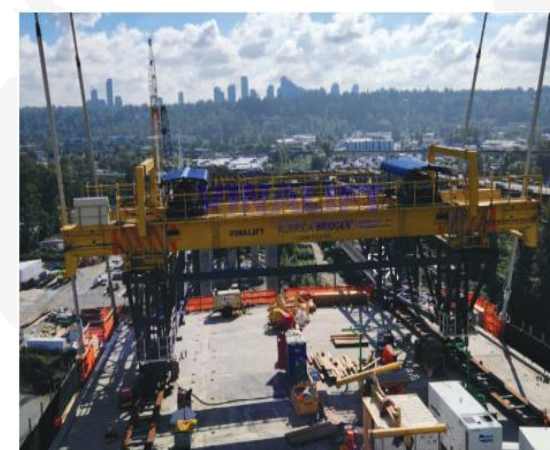


09 RUBICA - CANADA



BRIDGE ERECTION | VANCOUVER | CANADA

- Crane (30+30) ton
- Lifting height 65m



10 FECON | HANOI | METRO LINE



METRO CONSTRUCTION | HA NOI

- Gantry crane (45+45) ton
- Lifting height 26m



11 MEXICO

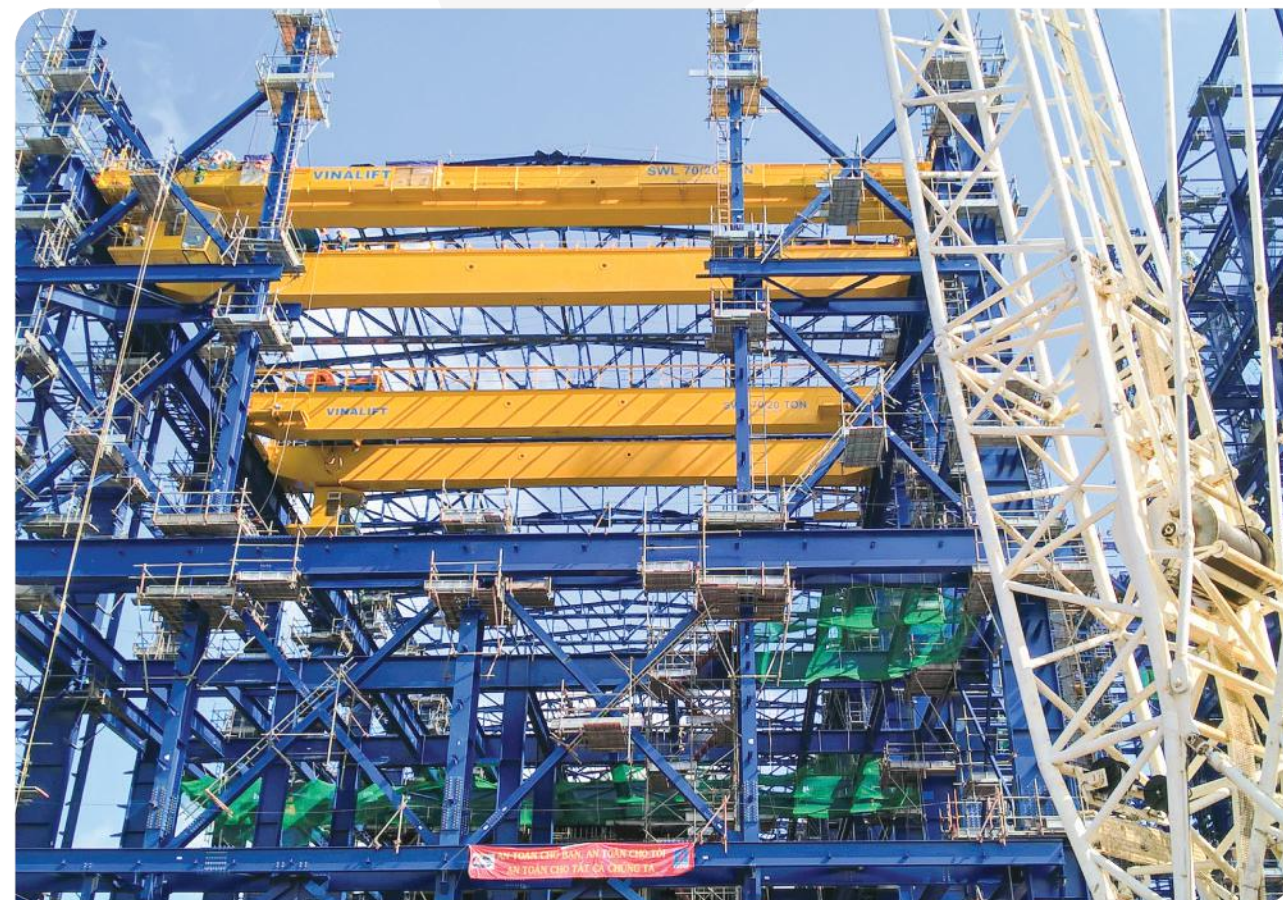


01 SOC TRANG PROVINCE – SOUTH OF VIETNAM | LONG PHU 1 TPP



**THERMAL POWER PLANT
TURBINE HALL | OVERHEAD CRANE**

- Lifting capacity: 70/20T
- Span: 30.5m
- Lifting height: 35m.



02 LAOS PDR



HYDRO POWER PLANT | GANTRY CRANE

- Lifting capacity: 25T
- Span: 9m
- Lifting height: 50m



03 LAO CAI PROVINCE – NORTH OF VIETNAM



HYDRO POWER PLANT (NAM XAY)
PORTAL CRANE

- Lifting capacity: 65/20T
- Span: 14.35m
- Lifting height: 12m



04 HA GIANG PROVINCE – NORTH OF VIETNAM

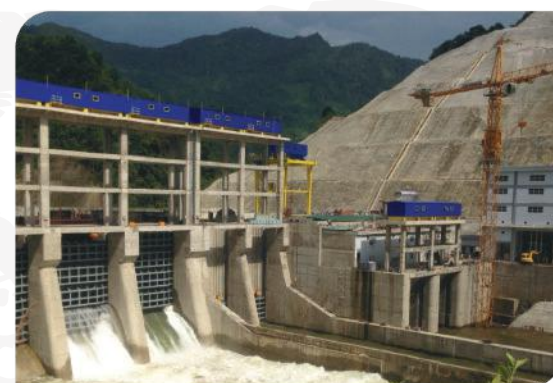


VINH HA HYDROPOWER PLANT

- LIFTING CAPACITY: 2X100T/ 2X32T
- SPAN: 8.5M
- LIFTING HEIGHT: 40M
- WORKING DUTY: 1AM



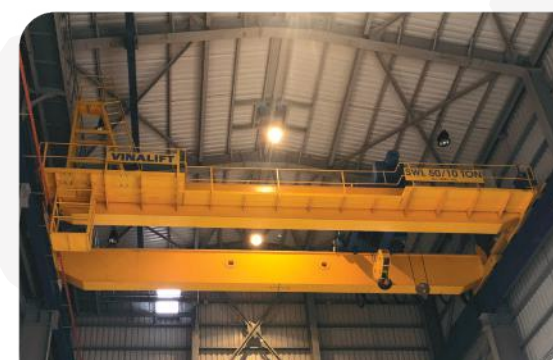
05 LAO CAI PROVINCE – NORTH OF VIETNAM



BAC ME HYDROPOWER - GANTRY CRANE

- Gate handling Gantry Crane: 2x50 ton - 1 set
- Gate handling winch: 2x125 ton - 5 set

06 SONG HAU 1 TPP | 50/10 TON



07 THAI BINH 1 TPP | 80/20 TON

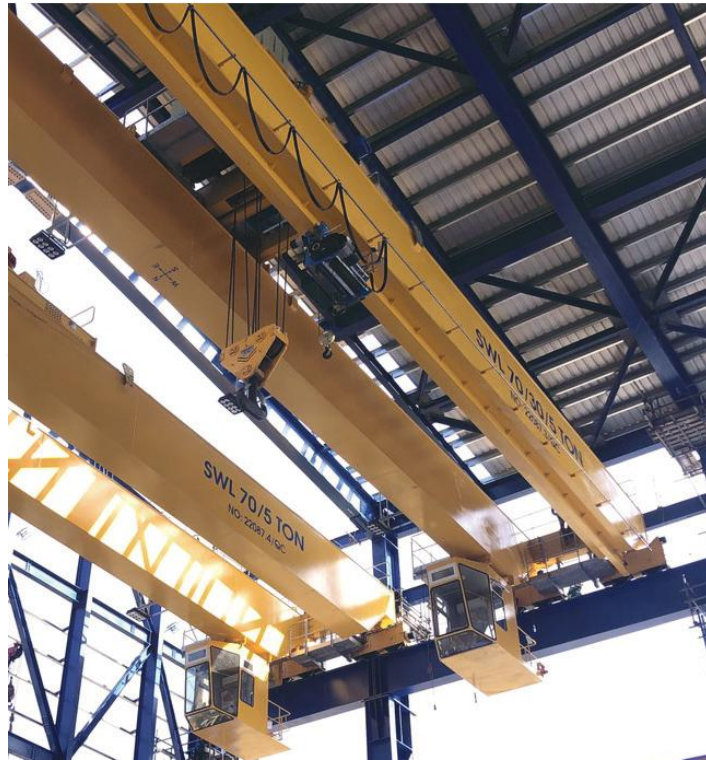


08 KCP - PHU YEN 1 THERMAL | 75/5 TON



CRANES FOR HYDROPOWER PLANT AND THERMAL POWER PLANT

09 NHƠN TRẠCH LNG 3&4 | CAPACITY 70/30/5T



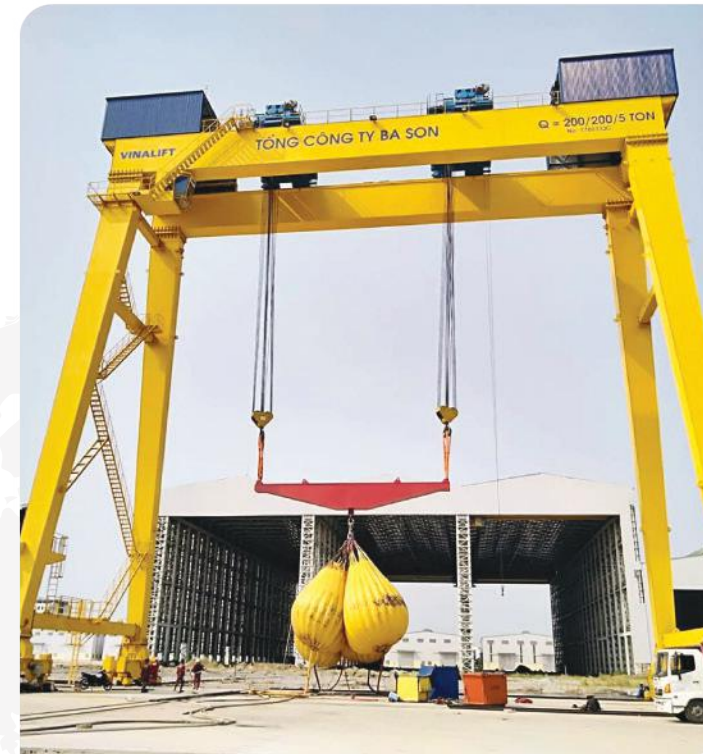
DOUBLE GIRDER OVERHEAD CRANE

- Lifting capacity: 70/30/5
- Span: 31.3m
- Lifting height: 17.5m



CRANE FOR SHIPYARD

01 BASON SHIP BUILDING FACTORY – SOUTH OF VIETNAM



SHIPBUILDING FACTORY | GANTRY CRANE

- Lifting capacity: 200/200T
- Span: 36m
- Lifting height: 33m



02 PHA RUNG SHIPBUILDING - NORTH OF VIET NAM | 100 TON & 80 TON



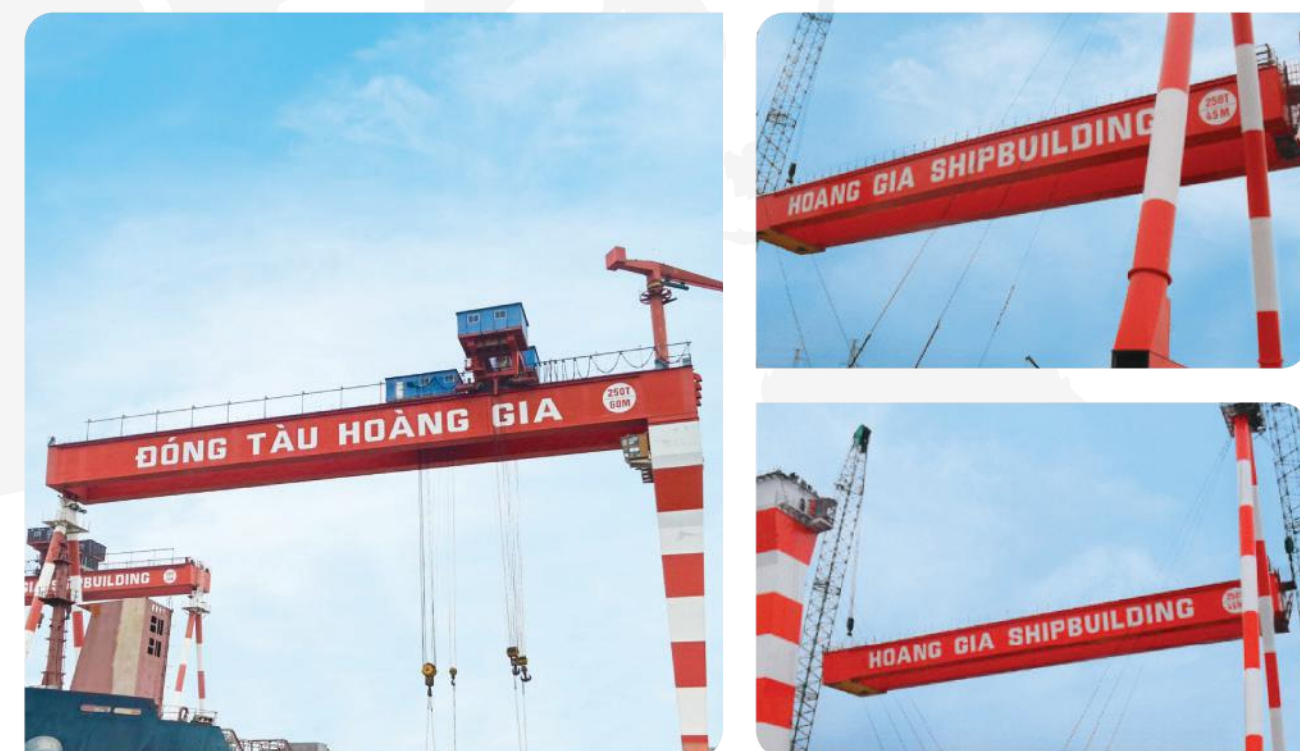
03 SONG THU SHIPBUILDING - MIDLE OF VIET NAM 150/150 TON & 100/100 TON



04 189 SHIPBUILDING NORTH OF VIET NAM | 100/30 TON



05 HOANG GIA SHIPBUILDING NORTH OF VIET NAM | 250 TON X 60M



01 HOA PHAT HUNG YEN STEEL PLANT PROJECT | 70/20 TON



02 VINA KYOEI STEEL MILL | 15 TON WITH GRAB & MAGNET



03 ARGENTINA - STEEL MILL PLANT



40/10 TON DOUBLE GIRDER OVERHEAD CRANE

- Lifting capacity: 40/10T
- Span: 18.3m
- Lifting height: 9.7m

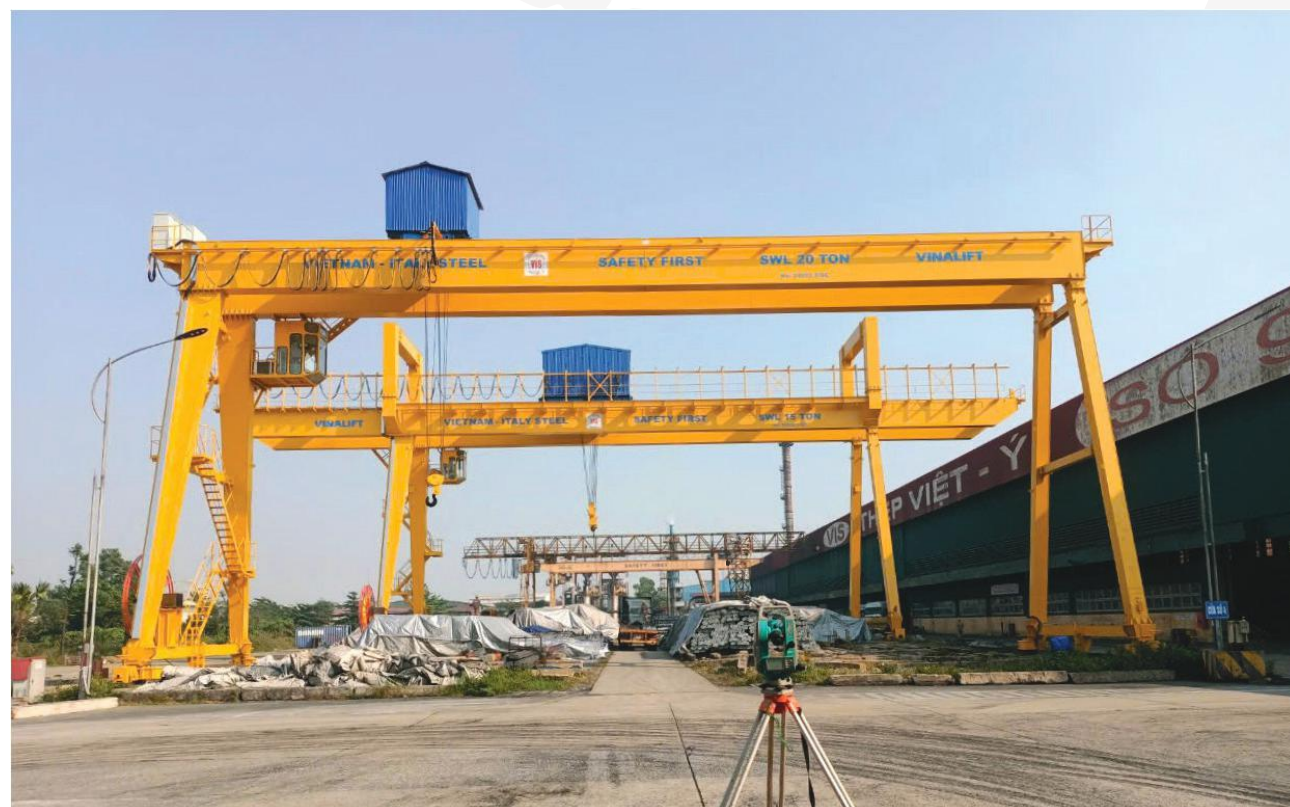


04 VIETNAM ITALY STEEL - NORTH OF VIETNAM

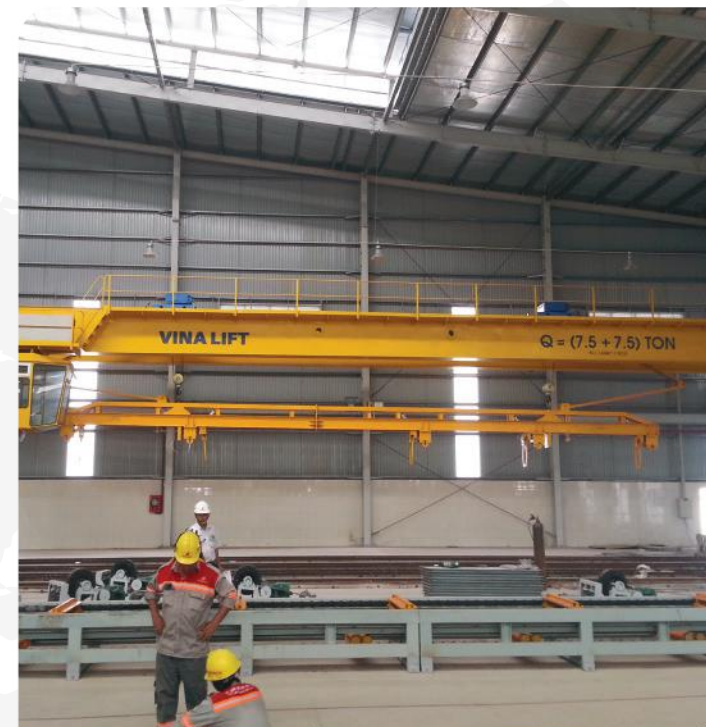


20 & 15 TON DOUBLE GIRDER GANTRY CRANE

- Lifting capacity: 20T - 15T



01 DONG TAM FACTORY – SOUTH OF VIETNAM



PRODUCTION LINE | OVERHEAD CRANE

- Lifting capacity: (12+12)T
- Span: 29m
- Lifting height: 5.3m



02 XUAN CUONG ICD – NORTH OF VIETNAM



OVERHEAD CRANE
- Lifting capacity: 30T



03 SAMSUNG ELECTRONICS FACTORY – NORTH OF VIETNAM



CLEANING ROOM CRANES | JIB CRANE
- Lifting capacity: 5T
- Cleaning classification: 1000

04 DONG ANH ELECTRICAL EQUIPMENT PROJECT



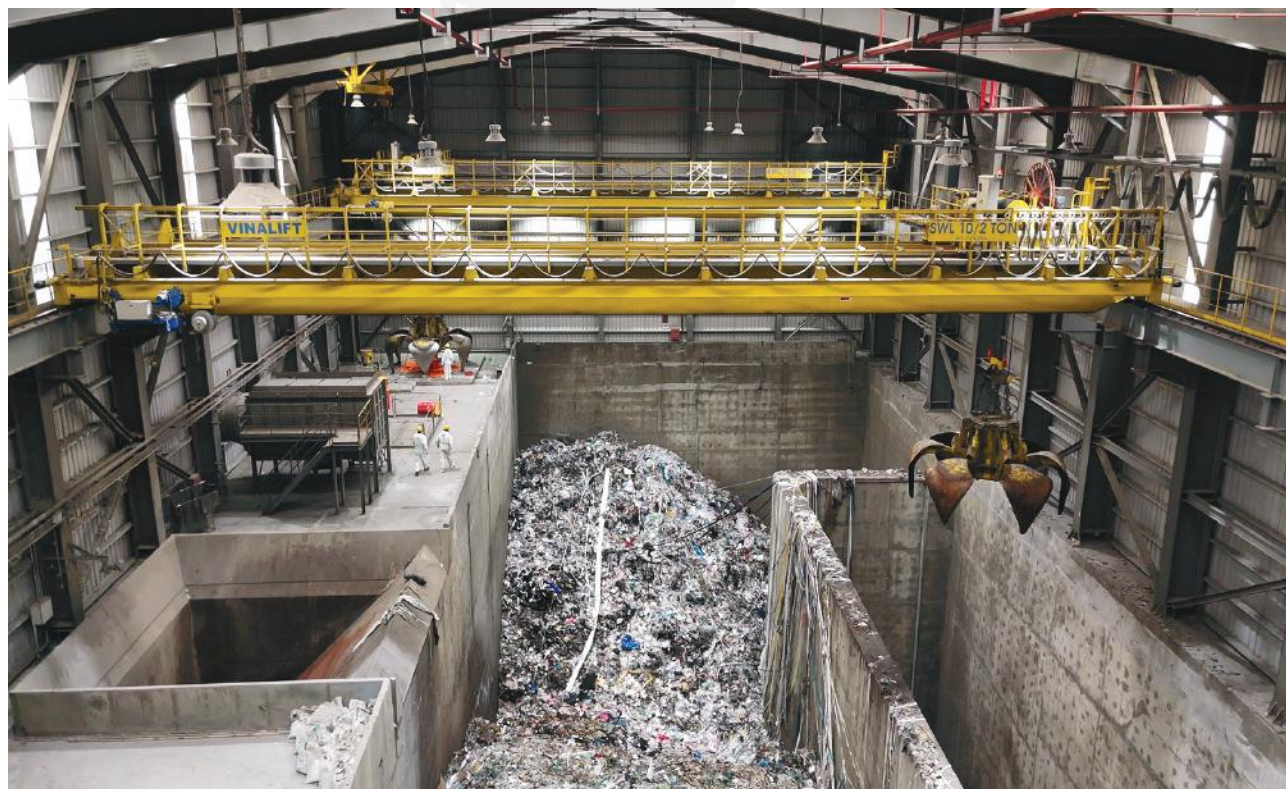
OVERHEAD CRANE
- Lifting capacity: 100 Ton, 80 Ton

05 AUTO OPERATION CRANE FOR WASTE TO ENERGY



AUTO OPERATION CRANE

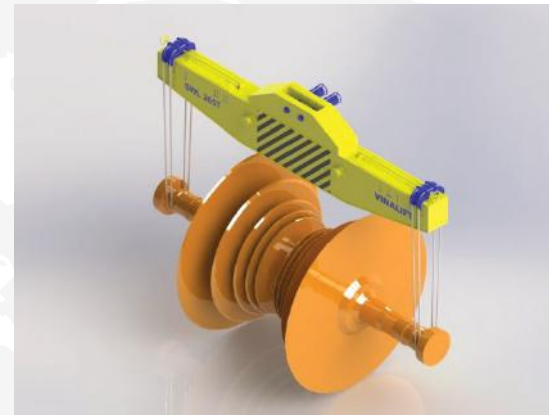
- Lifting capacity: 10/2T
- CAPACITY: 500T/DAY



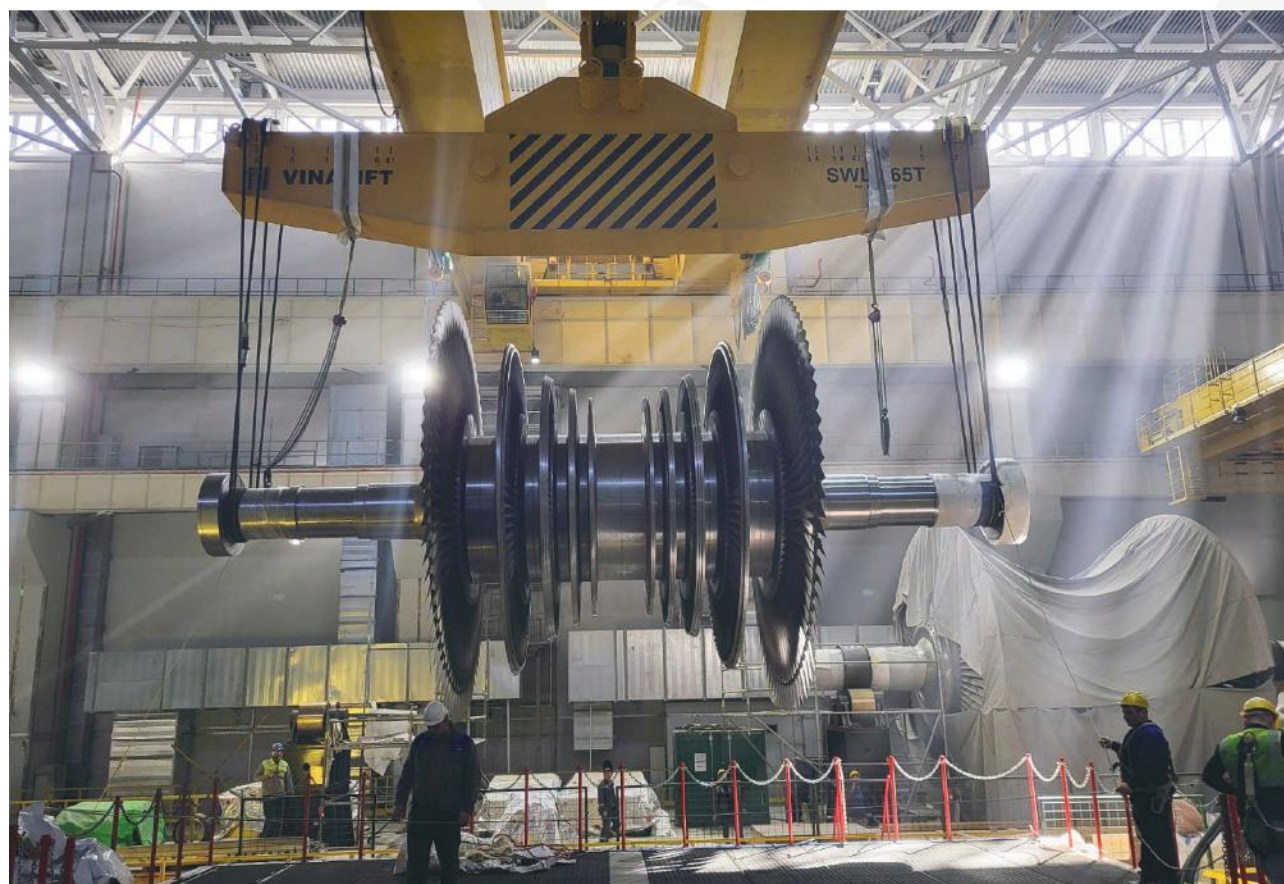
01 ACCESSORIES FOR RTG QC AND SHIP ENGINE



02 LIFTING BEAM - NUCLEAR POWER PLANT



265 TON LIFTING BEAM
- Lifting capacity: 265T



03 TRIPPER CAR - TAKRAF - INDIA



04 LIFTING BEAM - HATECO HAIPHONG INTERNATIONAL CONTAINER TERMINAL (HHIT)



75 TON LIFTING BEAM

- Lifting capacity: 75T
- Quantity: 2 set



05 LASHING & MAINTENACE PLATFORM - HHIT



LASHING & MAINTENACE PLATFORM

- Lifting capacity: 5T
- Quantity: 2 set





VINALIFT
Lifting your dream

- | | | | |
|------------------|---------------|--------------------|-----------------|
| LAOS (1) | OMAN (7) | CAMBODIA (13) | THAI LAN (19) |
| BANGLADESH (2) | KUWAIT (8) | EU (14) | BANGLADESH (20) |
| SAUDI ARABIA (3) | ARGENTINA (9) | KOREA (15) | CANADA (21) |
| UAE(4) | ITALIA(10) | MYANMAR (16) | |
| THE US (5) | JAPAN (11) | RUSSIA (17) | |
| LIBYA (6) | MEXICO (12) | THE PHILIPINS (18) | |



CERTIFICATION



ISO 14001 CERTIFICATION



ISO 45001 CERTIFICATION



CERTIFICATION EN 1090-1



CERTIFICATION EN 1090-2



CERTIFICATION FROM SMCC



CERTIFICATION FROM SONG THU SHIPYARD



CERTIFICATION FROM SMCC



Inspection Certificate
For Details Of Conformity



CE Certification



ISO Certification



PARTNERS & CUSTOMERS

