

PORCELAIN IN PRINT

Exploring Lowestoft Porcelain through Printmaking

Lowestoft Porcelain

For 45 years between 1756 and 1802 Lowestoft Porcelain was made in a factory in what is now known as Crown Street. The factory is thought to have employed up to 70 workers (about 4% of the population of the town at the time). It mostly produced "useful wares" such as pots, teapots, and jugs, with shapes copied from silver work or from Bow and Worcester porcelain.

The Items

Images and information of individual items from the Lowestoft Porcelain collection at Norwich Castle Museum were collected together for the workshop. Each participant created handmade prints depicting, based on, or inspired by, a chosen item.

Prints created by all the participants in the workshop held at The Seagull and supported by Messums East.

November 2025











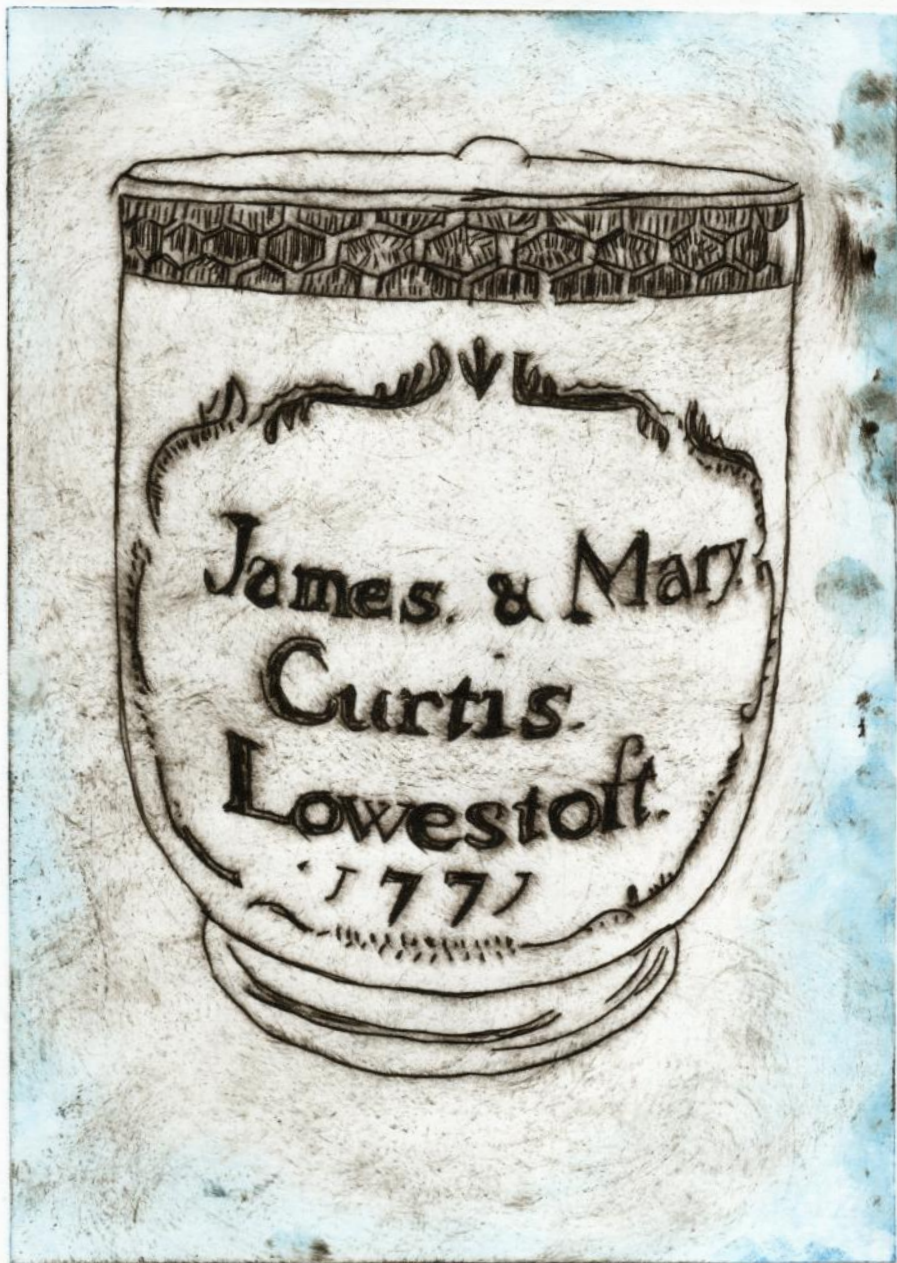


















KEY TO THE PRINTS

The participants and items chosen were as follows

2- Sarah

Lowestoft porcelain saucer; painted in underglaze blue with a dragon design, made about 1780. NHWCM 1952.125.95

3- Anne

Lowestoft porcelain miniature saucer; painted in underglaze blue with a Chinese garden scene to body and a lattice border to inside rim. Made about 1770-1780 NHWCM 1950.5.116

4- Bob

Lowestoft porcelain teapot and cover, globular body, S-shaped spout with 7 straining holes inside, ribbed loop handle, low-domed cover with rounded knob, painted in underglaze blue, floral garlands to either side of body and on cover, two oval cartouches on the body contain inscriptions-“Remember Her, Who, Gives this Trifle” “ER” and “LOWESTOFT, SUFFOLK. 1790”: Leafy stems and a flower sprig decorate the spout; scrolls and blue strokes at junctures to the handle, formal flower to the knob, type 1 husk border to shoulder and cover, Created 1790 attributed to Robert Allen. NHWCM 1959.140

5- Ettie

Lowestoft porcelain figure of a cat, sited upright on rounded base' painted in enamel colours, brownish-black and red markings, green base. NHWCM 1973.319.43

7- Tessa

Lowestoft porcelain bottle ewer; bulbous body and long narrow neck with collar below the flaring rim; painted in underglaze blue with panels containing views of Lowestoft landmarks and sailing ships; base inscribed E.A / Lowestoft / 1764 ; scroll and flower border to outside rim. Painted in underglaze blue, probably by Richard Phillips, with rare motifs, suggesting a limited run. The bottle features important Lowestoft landmarks of the day, St Margaret's Church, the two lighthouses, the North artillery battery and sailing ships. The basin basin depicts these along with the Corn Cross and , on the outside a Chinese river scene. Created 1764. NHWCM 1948.31.10.1 D

9- Pam

Lowestoft porcelain cream jug; painted in enamel colours with chinoiserie scene of figures and trees, handle with kick at bottom, no mark. Made about 1760-1769 NHWCM 1952.125.152

10- Jan

Lowestoft porcelain mug; bell-shaped with scroll handle with thumb rest; painted in underglaze blue with a cartouche of scrolls containing the inscription "James & Mary Curtis Lowestoft 1771" flower sprays to either side of cartouche, scrolls to handle and a printed cell border to outside rim; decoration attributed to Robert Allen, dated 1771
NWHCM 1948.31.20 D

11- Lewis

Lowestoft porcelain inkstand; cylindrical with central well and four pinholes, painted in enamels with bunch of red, pink and purple flowers on one side, opposite side; A trifle from Lowestoft, with in a dull purple cartouche, garland of flowers round shoulder, twined around red band linking pen holes, mmm border inside ink well, leaves drawn in black beneath green enamel; no mark. Date unknown.
NWHCM 1948.31.37 D

12- Jill

Lowestoft porcelain coffee cup with scroll handle, painted in underglaze blue with wavy bands of scale pattern alternating with small flower sprays to body and double line border to outside rim, made about 1770.
NWHCM:1929.29.1

13- Rosemary

Lowestoft porcelain miniature tea bowl, underglaze blue floral

arrangement and floral sprig with a butterfly, double line border around inside of rim. Made about 1780-1800.
NWHCM:1950.5.762

17- Liz

Lowestoft porcelain saucer, painted in underglaze blue with a Chinese river scene to body and lattice and flower border to inside rim made about 1770-1780
NWHCM:1952.125.105

18- Sue

Lowestoft porcelain bowl; painted inside in underglaze blue with portraits of Mr and Mrs dance and with scroll border inside rim, outside with flower sprays in enamels
NWHCM 1948.31.24 D

19- Katy

Lowestoft porcelain teapot and cover; painted in dark toned enamels with bunches and sprigs of flowers, red border and red flower on kick, no mark. Created 1770-1780
NWHCM 1952.125.167

20- Ineka

Lowestoft porcelain mug; waisted cylindrical body with a ribbed loop handle: transfer printed in underglaze blue with flower sprays and butterflies to body, flower sprig to handle and a painted double line border to inside rim , made 1780
NWHCM 1956.213.D

The Prints

The printmaking technique used in the workshop was drypoint, a form of Intaglio printing. The plate materials used included acetate, drypoint card and empty cardboard drinks containers (Tetrapak). The prints were made on Fabriano Unica paper with water washable oil based inks on a professional press. Tissue paper was also used with powdered rice starch glue for the application of blocks of colour during the printing process.

The Workshop

The workshop was devised and delivered by Lisa and Hugh Davies of paper-works*, a printmaking studio based in Lowestoft.

The Zine

The zine has been designed and collated by Paper-works *using scans of the participants prints. It has been printed on Woodland Trust certified paper using toxin free, food grade inks using a solar powered digital printer for a minimum environmental footprint.

Many thanks to all the participants of the workshop

Created for

MESSUMS EAST



by

paper-works*