



JUNE 27 - JULY 6, 2025

with optional  
Oslo to Bergen Pre-Tour  
and Stockholm Post-Tour

# CRUISE THE MAJESTIC NORWEGIAN FJORDS

ABOARD PONANT'S EXCLUSIVELY  
CHARTERED, ALL-INCLUSIVE *LE LAPÉROUSE*

Orbridge

THE LAND OF LEGENDARY VIKINGS, CHARMING  
VILLAGES, ENDLESS VISTAS, CASCADING WATERFALLS  
AND GRACIOUS SCANDINAVIAN HOSPITALITY



Dear Alumni and Friends,

Join alumni and friends as we seize the opportunity to experience Norway's breathtaking fjords in unparalleled luxury and style.

Cruising aboard state-of-the-art *Le Lapérouse*, ignite your inner explorer with visits to incredible UNESCO World Heritage Sites, immersive hiking and kayaking adventures and enriching cultural and historical excursions.

Accompanied by a dedicated team of expert guides who will enhance your journey, every moment promises to be one of discovery and delight.

*Le Lapérouse* expedition cruise ship will be your floating sanctuary of comfort and rejuvenation after enriching days of riveting activities. Indulge in gourmet dining, unwind in spacious staterooms and savor panoramic views throughout the vessel.


With significant savings of more than \$1,000 per couple, we anticipate this tour will fill quickly. To reserve, visit [tju.orbridge.com](http://tju.orbridge.com), call (866) 639-0079 or return the attached reservation form.

Sincerely,



Lisa Repko, JD  
Vice President, Development & Planned Giving  
Thomas Jefferson University

---

 Orbridge takes seriously the responsibility to minimize our global environmental impact. Each year we plant 100,000 trees in U.S. State Forests with afforestation needs as an ongoing initiative among our evolving sustainability efforts. Learn more at [orbridge.com/going-green](http://orbridge.com/going-green).

# Cruise the Majestic Norwegian Fjords | Itinerary and Highlights (subject to change)

**Day 1: EN ROUTE FROM U.S.**

**Day 2: ARRIVE IN BERGEN, NORWAY – EMBARKATION** Upon arriving an Orbridge representative will be waiting to assist with your transfer to the ship. Take time to unpack and become familiar with your accommodations. This evening gather for a welcome reception and gala dinner to celebrate the exciting journey ahead.  
Overnight: *Le Lapérouse* (R,D)

**Day 3: GEIRANGER** After lunch take a wonderfully scenic drive to Dalsnibba Skywalk for unmatched panoramic views above the surrounding fjords and valley. Alternatively choose between two activities (additional fees), a kayaking excursion or a guided fjord safari aboard an agile rigid inflatable boat.  
Overnight: *Le Lapérouse* (B,L,D)

**Day 4: OLDEN** This afternoon journey to the summit of Mount Hoven aboard the Loen Skylift—one of the steepest cable cars in the world. Before returning to the ship see Olden Church, a charming wooden church dating back to the 18th century. Alternatively choose between three activities. Embark on a troll car excursion to view Briksdal Glacier, part of the larger Jostedalsglacier and one of Norway's most spectacular natural wonders (additional fee). Or enjoy time to hike moderately challenging Oldeskaret or the more demanding Skaala Ridge. The third option is to explore Olden independently, indulging in the surrounding natural beauty and serene ambiance.  
Overnight: *Le Lapérouse* (B,L,D)

**Day 5: NORDFJORDEID** Today discover Nordfjordeid's rich cultural heritage with an inside visit to the Sagstad Viking Center to learn about Norway's Viking history. Explore interactive exhibits showcasing archaeological finds from the region and view the full-scale reconstruction of the largest Viking longship ever discovered. Later choose to join a scenic drive towards the Kvalen and Nos viewpoints for magnificent views of the Nordfjord region from 1,600 feet above sea level (additional fee). Or enjoy time to stroll Nordfjordeid independently. This evening indulge in another culinary masterpiece inspired by the flavors of Norway crafted with locally sourced ingredients.  
Overnight: *Le Lapérouse* (B,L,D)

**Day 6: STAVANGER** Disembark in Stavanger for a guided tour. Continue to Utstein Monastery, the only remaining medieval monastery in Norway, for an inside visit. Peruse the small museum, which houses artifacts and exhibits detailing the monastery's history and the daily lives of the monks who lived there. Later visit the Norwegian Petroleum Museum, which features a wealth of exhibits and information illustrating how offshore operations have become Norway's most important industry.  
Overnight: *Le Lapérouse* (B,L,D)

**Day 7: SANDNES** Visit the Iron Age Farm—a reconstructed farmstead from the Migration Period (350-550 AD) located on the original archaeological site. Next gather for a fish soup (or *fiskesuppe*) tasting. The remainder of the afternoon is yours to enjoy the amenities on board the ship. Unwind in the panoramic lounge with a complimentary beverage, take a dip in the pool or watch the passing scenery from the viewing deck.  
Overnight: *Le Lapérouse* (B,L,D)

**Day 8: ARENDAL** Arrive in Arendal on the southeastern side of Norway for a guided walking tour of Tyholmen, the oldest and best preserved part of town. Stroll the cobblestone streets alongside fishing boats bobbing in the picturesque harbor and be transported back in time to the days of Norway's maritime past. Next visit the Arendal Maritime Museum to gain insight into the town's seafaring heritage and view exhibits showcasing traditional maritime artifacts and historic photographs.  
Overnight: *Le Lapérouse* (B,L,D)

**Day 9: GOTHENBURG, SWEDEN** Explore the charming historic district of Haga during a guided walking tour. Peruse the unique shops before gathering at a bakery to partake in a *fika*—the tradition of sipping tea or coffee with a delicious pastry. Afterward you may choose to stroll through the Gothenburg Museum of Art to view its impressive collection of Nordic and international art. Enjoy a farewell reception and gala dinner on board this evening.  
Overnight: *Le Lapérouse* (B,L,R,D)

**Day 10: OSLO – DISEMBARKATION | DEPART FOR U.S.** After breakfast take a complimentary transfer to the airport for flights home. (B)  
(B = Breakfast, L = Lunch, D = Dinner, R = Reception)



## What's Included

- 8 nights aboard luxurious *Le Lapérouse*
- All onboard hand-crafted meals: 8 breakfasts, 7 lunches and 8 dinners (served with wine, beer or non-alcoholic beverages) plus special welcome and farewell receptions
- Unlimited select complimentary beverages available 24/7 on board the ship, including in the comfort of your stateroom
- Private tours and special small-group excursions as noted in the 10-day itinerary
- Full guiding services of a team of Orbridge Expedition Leaders and expert local guides
- Private motor coach transportation
- Luggage portorage
- Gratuities to ship crew, Orbridge Expedition Leaders, local guides, drivers, porters and wait staff for included meals
- Airport transfers for guests arriving and departing during the suggested times



**Activity Level:** Guests should be able to enjoy two hours or more of walking, be sure-footed on cobble surfaces, and walk up and down stairs without assistance.



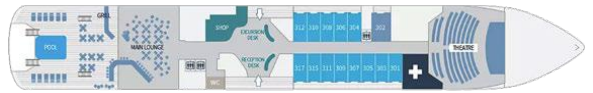


## Le Lapérouse

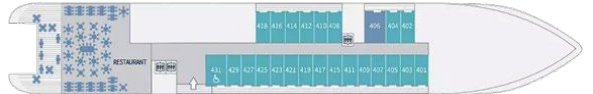
Accommodating 184 guests, the 430-foot *Le Lapérouse* provides environmentally conscious luxury. More than a cruise ship, she's a floating haven where elegance meets sustainability. The latest technology ensures smooth sailing, while sophisticated amenities cater to guests' every need. Retire to luxurious staterooms designed for relaxation, each providing a sanctuary of tranquility amidst the voyage's excitement.



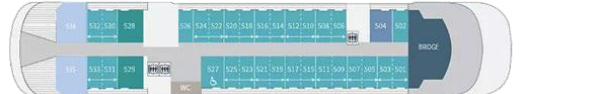
Aft Deck



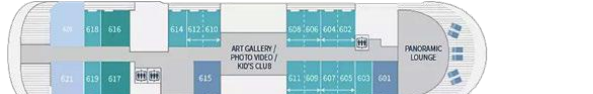
Deck 3



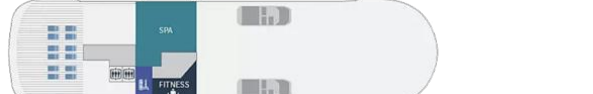
Deck 4



Deck 5



Deck 6



Deck 7



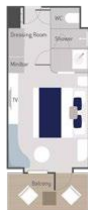
Lounge



Sauna

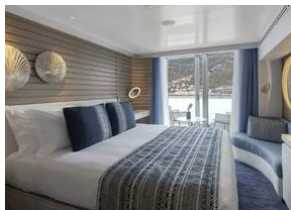


Blue Eye Lounge



**Deluxe (Deck 3) approx. 204 sq. ft.**

One king or two single beds, private bathroom with shower, glazed panoramic swing door and rectangular window, private balcony with two armchairs.



**Prestige (Decks 4, 5, 6) approx. 204 sq. ft.**

One king or two single beds, one chaise lounge chair, private bathroom with shower, panoramic sliding bay window or panoramic swing door, panoramic sliding bay window, private balcony with two armchairs.



**Deluxe Suite (Decks 3, 4, 5, 6) approx. 290 sq. ft.**

One king or two single beds, an armchair and sofa, private bathroom with shower, glazed panoramic swing door and panoramic window (Deck 3), panoramic sliding bay window (Decks 4, 5, 6), private balcony with two armchairs.



**Prestige Suite (Decks 5, 6) approx. 409 sq. ft.**

Priority boarding (Deck 6), champagne and fruit basket upon arrival, assortment of sweet or savory canapés and fruit basket daily, one king or two single beds, lounge with sofa bed convertible to one king or two single bed, armchair, two TVs, sliding courtesy door, two private bathrooms with showers, two panoramic sliding bay windows, private balcony with four armchairs, butler service (Deck 6).



**Privilege Suite (Decks 5, 6) approx. 344 sq. ft.**

Priority boarding, champagne and fruit basket upon arrival and assortment of sweet or savory canapés and fruit basket daily (Deck 6), one king or two single beds, lounge with chaise lounge and armchair, private bathroom with shower, panoramic sliding bay window, private balcony with two armchairs, butler service.



**Grand Deluxe Suite (Deck 6) approx. 484 sq. ft.**

Priority boarding, assortment of sweet or savory canapés and fruit basket daily, one king or two single beds, lounge with sofa bed convertible to double bed, armchair, two TVs, private bathroom with shower and Baleno tub, two panoramic sliding bay windows, private terrace with two deckchairs and four-seat dining table, butler service.



**Owner's Suite (Deck 5) approx. 505 sq. ft.**

Priority boarding, champagne and fruit basket upon arrival, assortment of sweet or savory canapés and fruit basket daily, one king or two single beds, lounge with armchair and double sofa bed, two TVs, private bathroom with shower, Baleno tub, and smart mirror, two panoramic sliding bay windows, one-hour spa treatment (for two), selection of premium spirits at the bar, butler service and a private terrace with jacuzzi.

# Optional Oslo to Bergen Pre-Tour

Set off on a journey from Oslo to Bergen and experience the essence of Norwegian splendor.

**Day +1: EN ROUTE FROM U.S.**

**Day +2: ARRIVE IN OSLO, NORWAY** Upon arrival to Oslo Airport, transfer to the hotel and enjoy the remainder of the day at leisure.  
Overnight: Sommerro

**Day +3: OSLO** Meet with a local guide for a panoramic city tour. Visit Vigeland Park featuring an impressive collection of more than 200 bronze, granite and wrought iron sculptures. Continue to the Opera House with its sloping marble roof that extends seamlessly from the ground level up. The remainder of the day is at leisure.  
Overnight: Sommerro (B)

**Day +4: OSLO | FLÅM** Transfer to the Oslo train station to embark upon a scenic rail journey to Myrdal in business class seating. Transfer to the Flåm Railway for the 60-minute descent to the village of Flåm. Enjoy free time before embarking on a cruise through Nærøysfjord, a branch of Sognefjord and a UNESCO World Heritage Site. The tranquil waters are surrounded by towering mountains, rugged peaks and picturesque villages along the shore.  
Overnight: Flåmsbrygga Hotel (B,L)

**Day +5: FLÅM | BERGEN | MAIN PROGRAM BEGINS** After touring Bryggen and Fantoft Stave Church, join guests arriving for the main program. (B,L)



## What's Included

- 3 nights hotel accommodations
- 3 breakfasts and 2 lunches
- Guided Oslo city tour
- Rail tickets between Oslo and Flåm
- Guided fjords tour through Sognefjord
- Guided Bergen touring
- Transportation for included tours
- Luggage portorage
- Gratuities to Orbridge Travel Director, local guide, driver, porters, hotel staff and wait staff for included meals
- Airport transfers for guests arriving during the suggested times

# Optional Stockholm Post-Tour

Conclude your Scandanavian adventures with a high-speed rail trip to Stockholm.

**Day 10: OSLO | STOCKHOLM, SWEDEN** Board a high-speed train for the relaxing, approximate six-hour journey to Stockholm. Business class seating offers wide seats and extended leg room, coffee and tea service, and complimentary Wi-Fi plus in-seat power outlets. The evening is at leisure.  
Overnight: Grand Hôtel (L)

**Day 11: STOCKHOLM** Meet with a local guide for a panoramic city tour. Stop for an inside visit to City Hall, known for its distinctive brick façade and towering spire. Continue to the Vasa Museum for an inside visit. Conclude the day's touring at Östermalms Food Hall for lunch on your own followed by free time to explore independently.  
Overnight: Grand Hôtel (B)

**Day 12: STOCKHOLM | DEPART FOR U.S.** After breakfast take the complimentary transfer to the airport for flights home. (B)

## What's Included

- High-speed rail tickets between Oslo and Stockholm
- 2 nights hotel accommodations
- 2 breakfasts and 1 lunch
- Guided Stockholm city tour
- Admission to the Vasa Museum
- Transportation for included tours
- Luggage portorage
- Gratuities to Orbridge Travel Director, local guides, drivers, porters and wait staff for included meals
- Airport transfers for guests departing during the suggested times



# CRUISE THE MAJESTIC NORWEGIAN FJORDS

JUNE 27 - JULY 6, 2025 Oslo to Bergen Pre-Tour: June 24-28, 2025 | Stockholm Post-Tour: July 6-8, 2025

Stateroom Category	Standard Rate	Special Rate*	Stateroom Category	Standard Rate	Special Rate*
Deluxe (Deck 3)	<del>\$7,949</del>	\$7,445	Privilege Suite (Decks 5, 6)	<del>\$17,949</del>	\$17,445
Prestige (Deck 4)	<del>\$9,349</del>	\$8,845	Grand Deluxe Suite (Deck 6)	<del>\$19,949</del>	\$19,445
Prestige (Deck 5)	<del>\$10,849</del>	\$10,345	Owner's Suite (Deck 5)	<del>\$20,949</del>	\$20,445
Prestige (Deck 6)	<del>\$11,249</del>	\$10,745	Single Deluxe (Deck 3)	<del>\$14,149</del>	\$13,645
Deluxe Suite (Deck 3)	<del>\$11,949</del>	\$11,445	Single Prestige (Deck 4)	<del>\$14,949</del>	\$14,445
Deluxe Suite (Deck 4)	<del>\$12,949</del>	\$12,445	Single Prestige (Deck 5)	<del>\$16,949</del>	\$16,445
Deluxe Suite (Deck 5)	<del>\$14,349</del>	\$13,845	Single Prestige (Deck 6)	<del>\$17,949</del>	\$17,445
Deluxe Suite (Deck 6)	<del>\$15,249</del>	\$14,745	<i>Category rates include the required \$450 per person port fee.</i>		
Prestige Suite (Deck 5)	<del>\$19,349</del>	\$18,845			
Prestige Suite (Deck 6)	<del>\$20,149</del>	\$19,645			

Oslo to Bergen Pre-Tour			Stockholm Post-Tour		
Category	Standard Rate	Special Rate*	Category	Standard Rate	Special Rate*
Double	<del>\$2,899</del>	\$2,695	Double	<del>\$2,099</del>	\$1,895
Single	<del>\$3,799</del>	\$3,595	Single	<del>\$2,999</del>	\$2,795

\*Rates are per person in U.S. dollars based on double occupancy except where noted as Single. Single availability limited.

## GUEST INFORMATION:

Guest #1 Name (Title/Salutation): \_\_\_\_\_  
 Email: \_\_\_\_\_ Class Year: \_\_\_\_\_  
 Home Phone: \_\_\_\_\_ Alt. Phone: \_\_\_\_\_  
 Address: \_\_\_\_\_  
 City: \_\_\_\_\_ State: \_\_\_\_\_ Zip: \_\_\_\_\_  
 Guest #2 Name (Title/Salutation): \_\_\_\_\_  
 Email: \_\_\_\_\_ Class Year: \_\_\_\_\_  
 Home Phone: \_\_\_\_\_ Alt. Phone: \_\_\_\_\_

## Reserve by Credit Card:

Online: [tju.orbridge.com](http://tju.orbridge.com)  
 Phone: (866) 639-0079  
 Fax: (206) 452-5655

## Reserve by Check:

Made payable to  
**Orbridge, LLC**  
 Mail to: Orbridge  
 P.O. Box 1376  
 Poulsbo, WA 98370

## DEPOSIT PAYMENT:

Check    ACH (Automated Clearing House)    MasterCard/Visa    American Express    Discover

Card #: \_\_\_\_\_ Exp. Date: \_\_\_\_\_ CVV: \_\_\_\_\_  
 Name (as printed on card): \_\_\_\_\_  
 Billing Address (if different from above): \_\_\_\_\_  
 City: \_\_\_\_\_ State: \_\_\_\_\_ Zip: \_\_\_\_\_

## CATEGORY SELECTION & DEPOSIT:

Category Preference: 1st choice \_\_\_\_\_ 2nd choice \_\_\_\_\_

# \_\_\_\_\_ guests joining pre-tour (\$500/person) +  
 # \_\_\_\_\_ guests joining program (\$850/person) +  
 # \_\_\_\_\_ guests joining post-tour (\$500/person) = **TOTAL DEPOSIT: \$** \_\_\_\_\_

Pre-Tour Category (choose one):    Double    Single  
 Post-Tour Category (choose one):    Double    Single

I/we have read, understand, and agree to the full Terms & Conditions at [terms.orbridge.com](http://terms.orbridge.com); and I/we agree that Orbridge, LLC is authorized to charge my credit card above and/or take my/our deposit for this program.

Signature: \_\_\_\_\_ Date: \_\_\_\_\_

\*Special group rate; limited offer. Airfare not included. Single availability limited. \*\*A complement to the educational component of this journey, Expedition Libraries are curated collections of useful resources and background reading tailored to this program. Place your deposit on or before the specified date, and one Expedition Library per household will be sent after receipt of final payment. Libraries may be purchased; call for details.

CUT HERE



**Jefferson**  
Thomas Jefferson University  
HOME OF SIDNEY KIMMEL MEDICAL COLLEGE

Jefferson Office of Alumni Relations  
1020 Locust St, Suite 210  
Philadelphia, PA 19107

## **CRUISE THE MAJESTIC NORWEGIAN FJORDS**

**JUNE 27 - JULY 6, 2025**

**Special Alumni Rate:**

**Save more than \$1,000 per couple**

**30-DAY REFUND GUARANTEE**

**FREE EXPEDITION LIBRARY  
AN EXCLUSIVE EARLY  
RESERVATION BONUS**

Reserve by

**October 25, 2024\*\***

PRSR STD  
U.S. POSTAGE  
PAID  
PERMIT NO. 825  
SAN DIEGO, CA