

**Westfield**  
WORLD TRADE CENTER

185 GREENWICH STREET  
NEW YORK, NY 10007

PREMIER  
MEDICAL LEASING  
OPPORTUNITIES

**WEXLER**  
HEALTHCARE & COMMERCIAL  
PROPERTIES  
TEAM AT THE CORCORAN GROUP

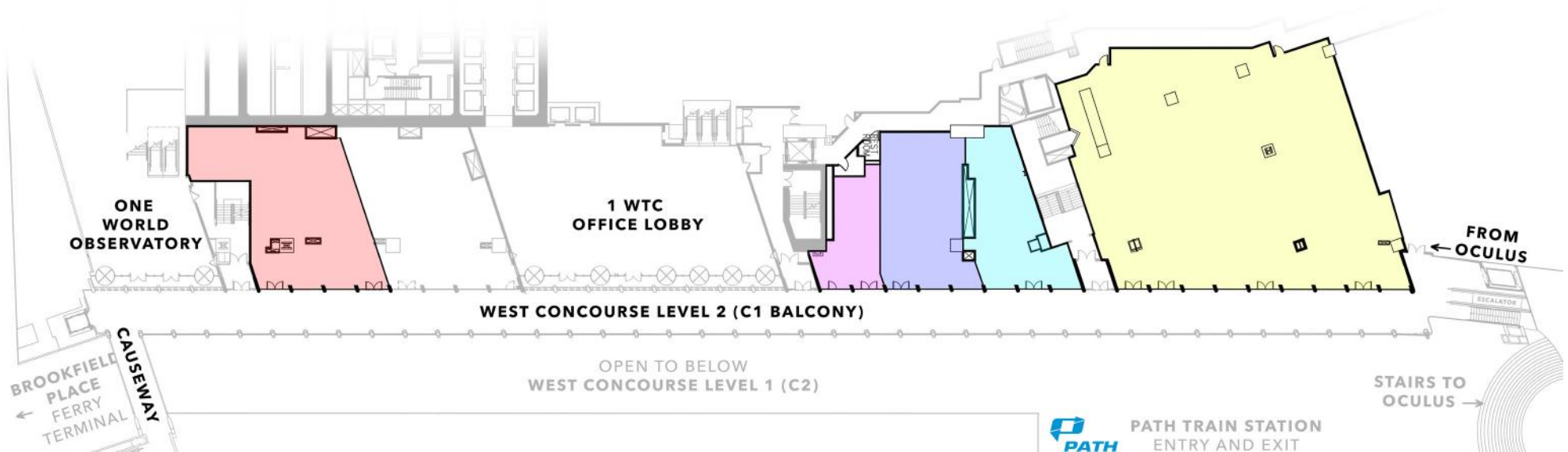


# WESTFIELD WORLD TRADE CENTER

## AVAILABILITIES - WEST CONCOURSE LEVEL 2 (C1)

SUITE	3100*	3110	3115	3120	3125*
USF	2,606	799	1,684	1,396	8,624
CONDITION	Raw	Built	Built	Raw	Raw
SLAB-TO-SLAB HEIGHT	00' 0"	00' 0"	00' 0"	15'	16'
FRONTAGE (APPROX.)	41' 8"	29' 10"	31' 3"	31' 3"	93' "9
POSSESSION	IMMEDIATE	1/1/27	2/1/27	IMMEDIATE	IMMEDIATE

\*REASONABLE DIVISIONS CONSIDERED

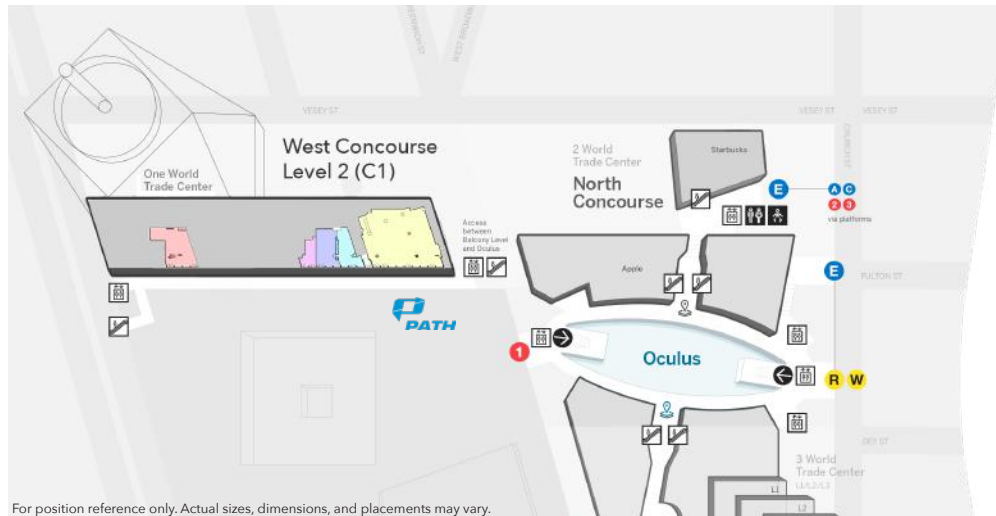


# WESTFIELD WORLD TRADE CENTER

## OVERVIEW

Located at the heart of Lower Manhattan, Westfield World Trade Center anchors the World Trade Center campus as a premier transit and retail hub, connecting the PATH Train, multiple subway lines, and surrounding office towers. It serves as both a commuter gateway and global destination with a constant, diverse flow of visitors.

Westfield World Trade Center draws approximately 200,000 people daily comprised of office workers, tourists visiting the World Trade Center and One World Observatory, and local residents. This built-in population supports steady, all-day foot traffic.



## TRANSPORTATION



Direct Subway Connections



PATH Train to New Jersey



Subway via Fulton Center



Nearby Transportation

**LOWER  
MANHATTAN'S  
PREMIER TRANSIT  
AND RETAIL HUB**

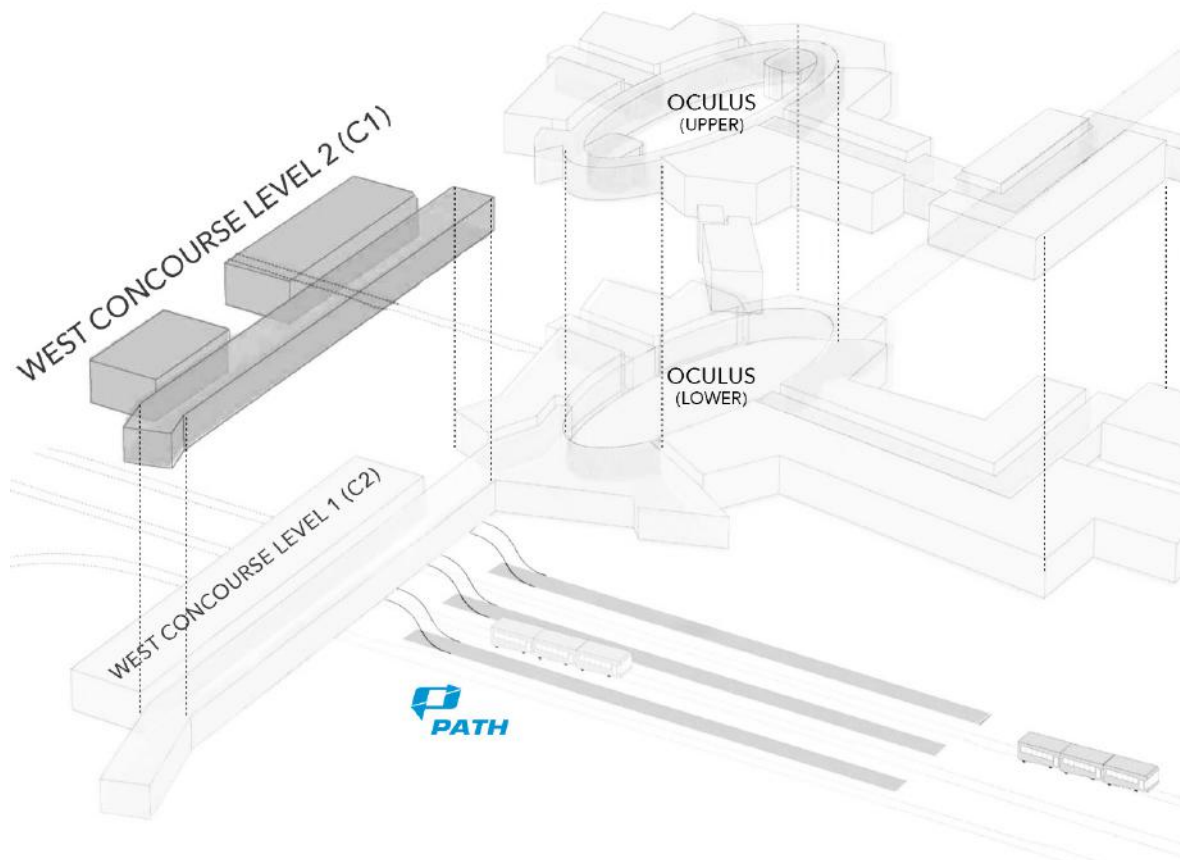
# WESTFIELD WORLD TRADE CENTER

## WEST CONCOURSE LEVEL 2 (C1 BALCONY)

West Concourse Level 2 sits along the primary pedestrian spine linking the 1 World Trade Center office lobby to the Oculus, PATH, and westward to the Brookfield Place Ferry Terminal. This high-traffic corridor captures continuous east-west commuter flow across rail, subway, and ferry connections.

For healthcare users, the location offers immediate access to a dense patient base seeking convenient, time-efficient care near work and transit. The mix of commuters, residents, and tourists supports a wide range of practices, from urgent care to specialty services, aligning with today's accessibility-driven care model.

The space features strong linear frontage, multiple access points, and immediate proximity to major circulation nodes, ensuring maximum visibility and patient access. With a "short elevator ride" from thousands of office workers and direct connectivity to all transit modes, West Concourse Level 2 (Upper Level) offers one of the most efficient and visible healthcare placements within the World Trade Center campus.



# WESTFIELD WORLD TRADE CENTER

## PATH TRAINS / WEST CONCOURSE

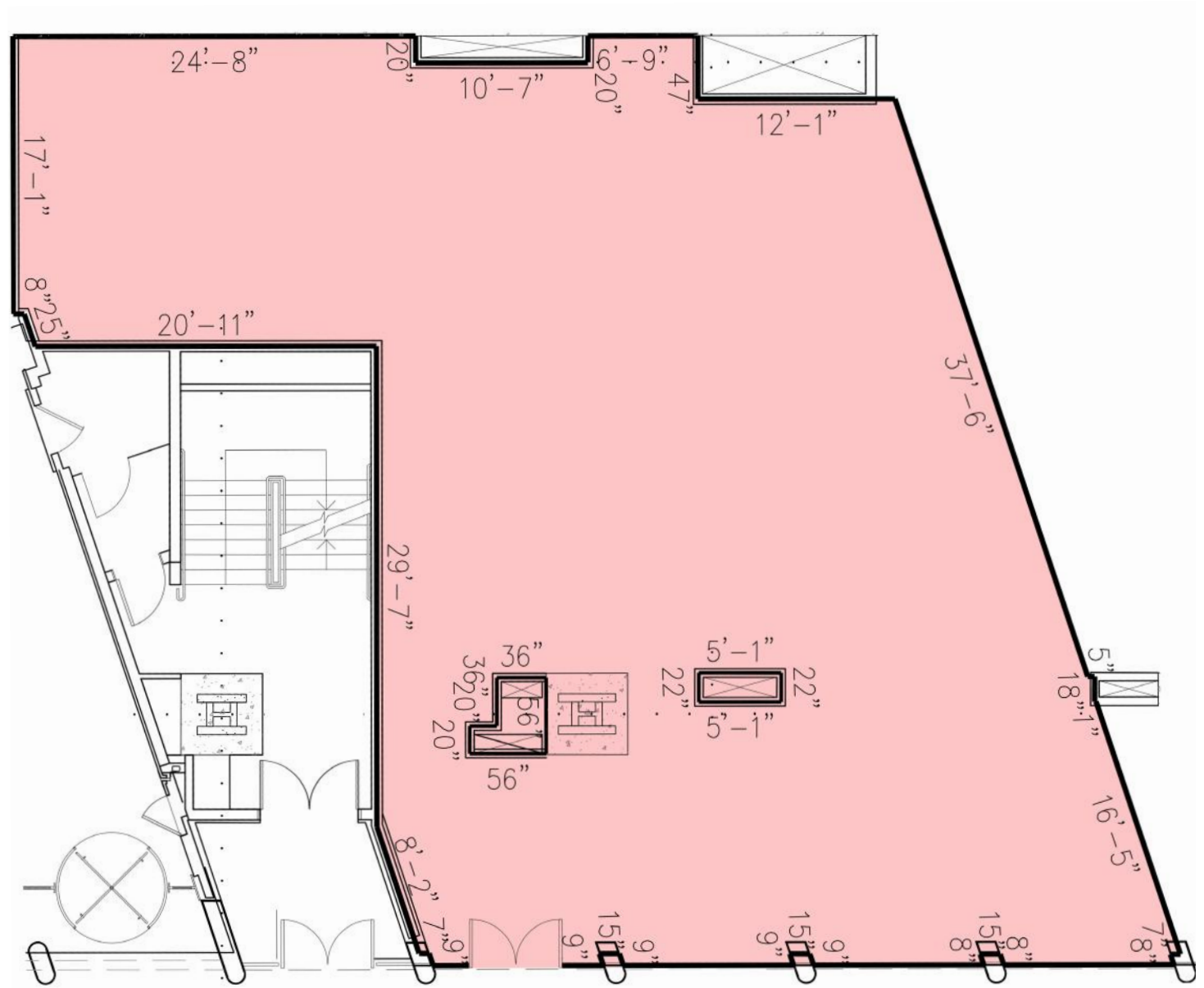


# **FLOOR PLANS**

---

CURRENT CONDITIONS

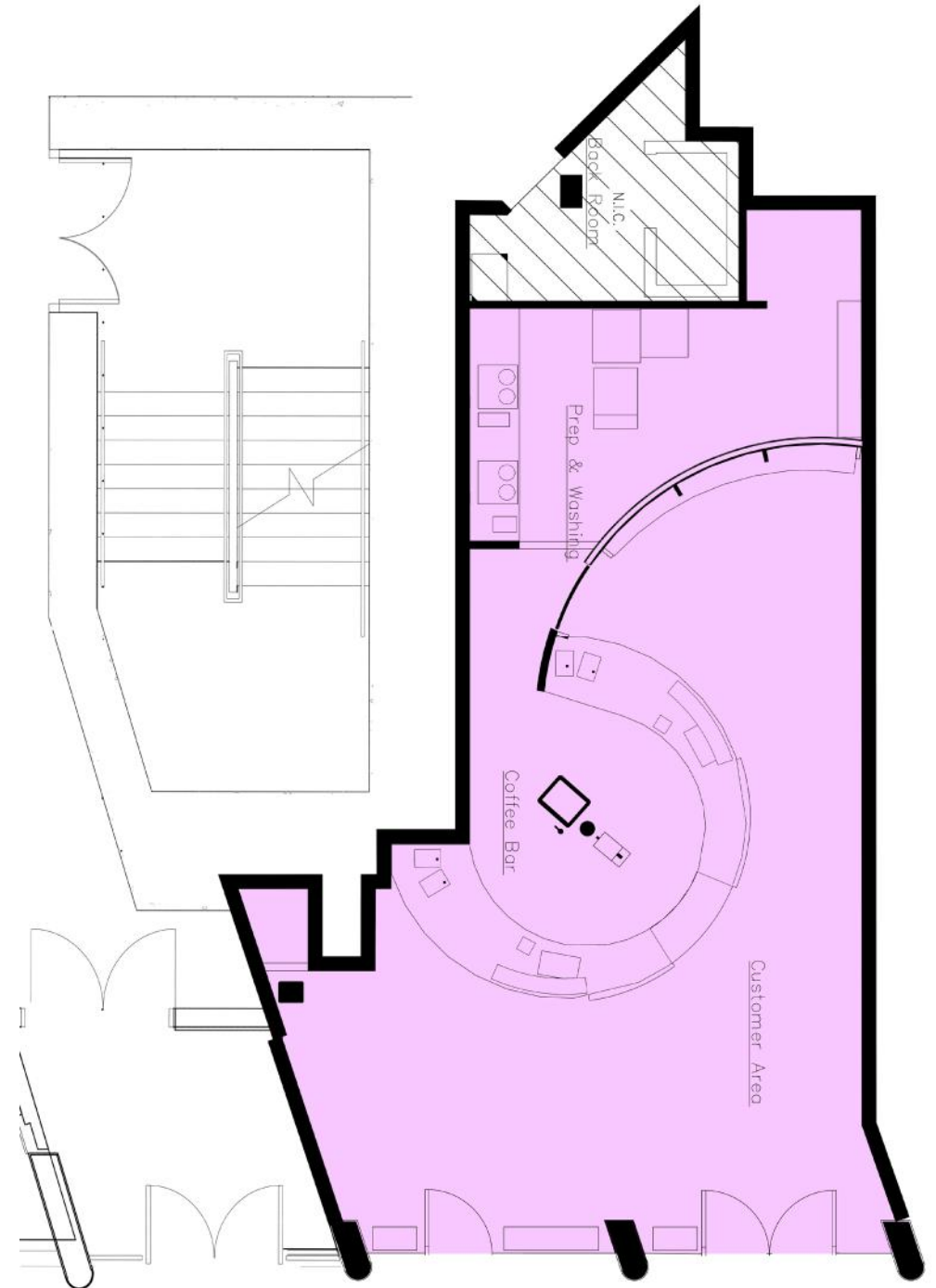
2,606 USF



## LAYOUT

Core & Shell

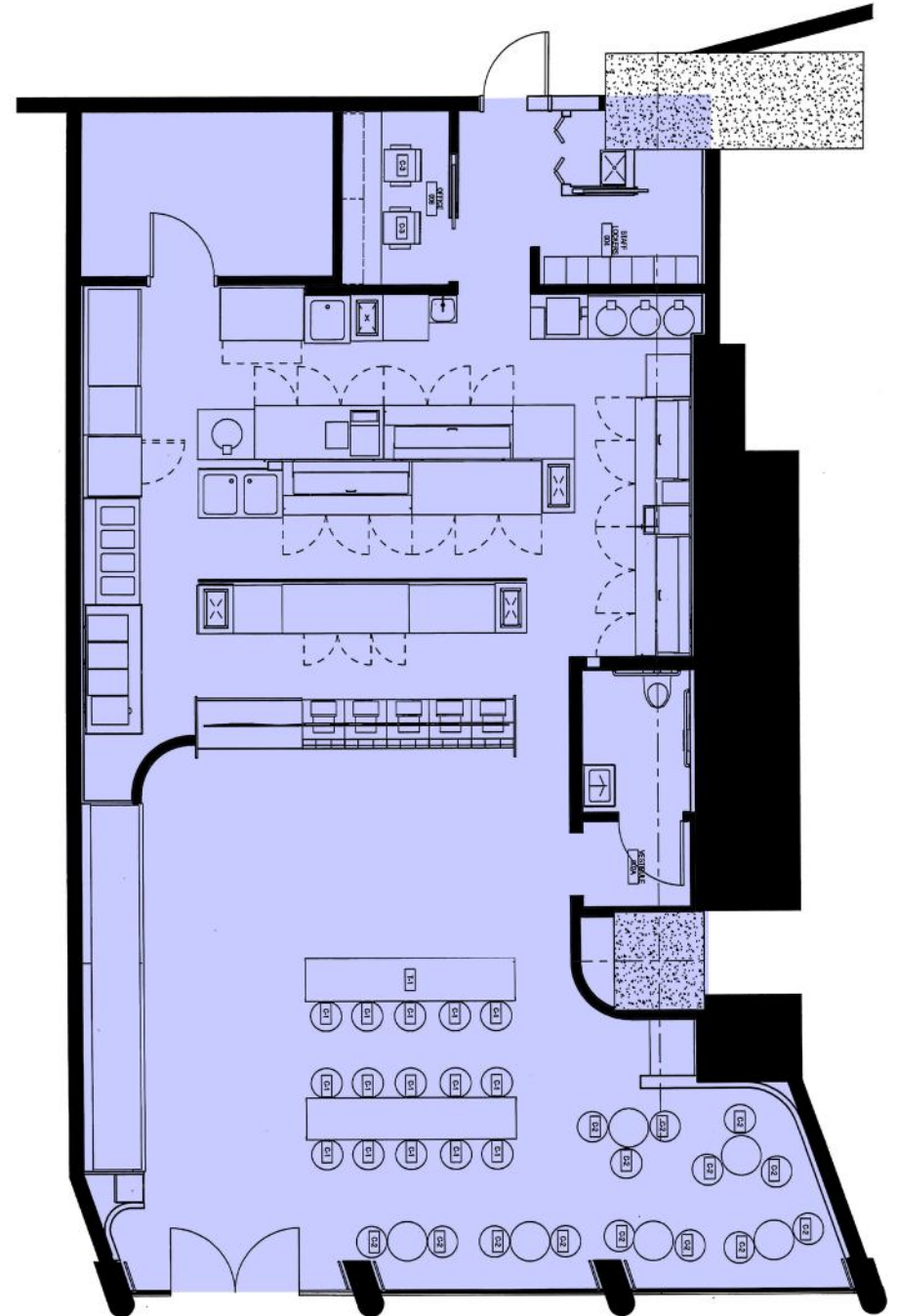
799 USF



## LAYOUT

Built - Coffee Shop

1,684 USF



## LAYOUT

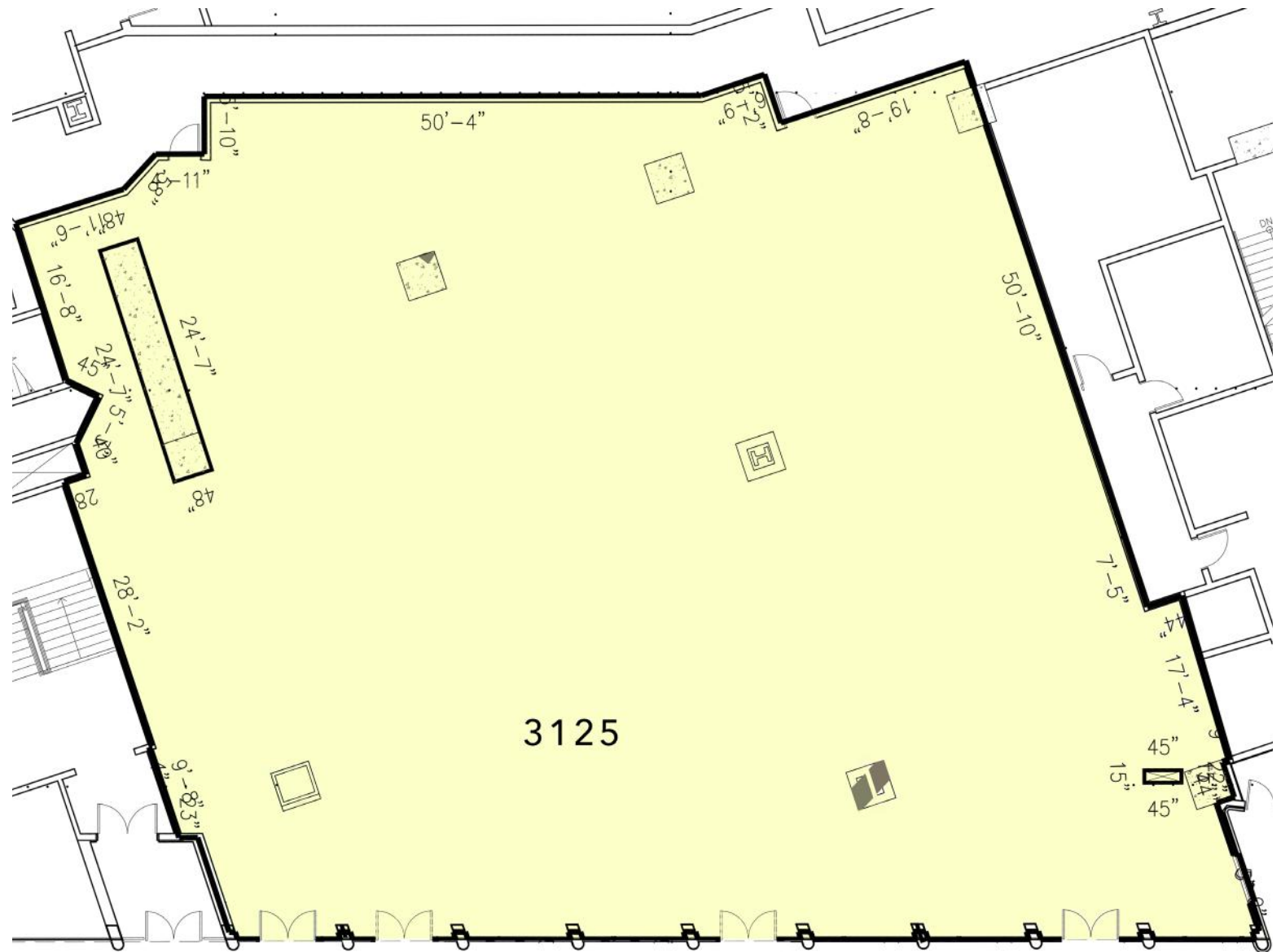
Built - Resturant

1,396 USF



LAYOUT  
Core & Shell

8,624 USF



## LAYOUT

Core & Shell

**Paul L Wexler**

Licensed Associate Real Estate Broker

P: 212.836.1075

E: PWexler@corcoran.com



**Josef Yadgarov**

Licensed Associate Real Estate Broker

P: 212.836.1097

E: JYadgarov@corcoran.com



**Alisia Ramlochan**

Licensed Associate Real Estate Broker

P: 212.893.1450

E: Alisia.Ramlochan@corcoran.com



**Kurt Herold**

Licensed Associate Real Estate Broker

P: 212.323.3817

E: KHerold@corcoran.com



**Cosmin Bitu**

Licensed Real Estate Salesperson

P: 917.602.5754

E: Cosmin.Bitu@corcoran.com



**Austin Weinerman**

Licensed Real Estate Salesperson

P: 212.323.3280

E: AWeinerman@corcoran.com



**FIND THE PERFECT SPACE AT**  
**WEXLERHEALTHCAREPROPERTIES.COM**



**UNIBAIL-RODAMCO-WESTFIELD**

Real estate agents affiliated with The Corcoran Group are independent contractors and are not employees of The Corcoran Group. Equal Housing Opportunity. The Corcoran Group is a licensed real estate broker located at 590 Madison Ave, NY, NY 10022. All information furnished regarding property for sale or rent or regarding financing is from sources deemed reliable, but Corcoran makes no warranty or representation as to the accuracy thereof. All property information is presented subject to errors, omissions, price changes, changed property conditions, and withdrawal of the property from the market, without notice.