



INDOOR & OUTDOOR  
CONTRACT FURNITURE FABRICS

## MAGLIA



BY VYVA FABRICS

Indoor - Outdoor

## MAGLIA

Indoor - Outdoor



### NL

Maglia, geïnspireerd op het beroemde "oxford" patroon (een geweven steek met twee garens over de lengte gecombineerd met een zwaarder garen kruislings, vaak in een andere kleur, of vice versa), valt Maglia op door de natuurlijke uitstraling van de relatief dikke textielvezels. Het voorziet elk interieur of exterieur van een stijlvolle en tegelijkertijd comfortabele look.

### EN

Maglia, inspired by the renowned "oxford" pattern (a basket-weave pattern that combines two yarns woven lengthwise against a heavier yarn woven crosswise, often in a different colour, or vice versa), Maglia stands out for the natural appearance of the relatively thick yarn fibers. It renders interior and exterior settings a classy, yet comfortable feel.

### CHARACTERISTICS

Composition:	Topcoat: 100% Vinyl (Mildew resistant backing and face) Backing: 100% Polyester Hi-Loft
Weight:	680 gr / m <sup>2</sup>
Thickness:	1,15 mm
Roll Width:	137 cm
Roll Length:	30 meter
Abrasion resistance:	>100.000 cycles (Martindale) (EN ISO 12947:1999 Part 2)
UV-resistance:	XENOTEST DIN 54004/ NTC 1479
Finishes:	Antifungal- Antibacterial and Anti-static, sulfide Stain Resistant EN 71-3 Safety of Toys (Migration of certain elements) 2005/84/EC (phthalates in toys and childcare articles)
Flame Retardancy:	EU: EN 1021 Part 1 & 2 EU: IMO FTP 2010 Code MSC.307 (88) Part 8 3.1 & 3.2 ES: UNE 23.727-90 1R/M.2 FR: NF P 92-503/M2 DE: DIN 4102 B2 IT: UNI 9175 (1987)/UNI 9175/FA1 (1994) Classe 1.IM (UNO I EMME) AT: ÖNORM B 3825, Gruppe 1- Schwerbrennbares Verhalten AT: ÖNORM A 3800 Teil 1, Qualmbildungsklasse Q1 US: FMVSS 302 /FAR 25/853 (MED) Marine Equipment Directive ECE R118.02 (replaces Directive 95/28/CE) Annexes 6, 7 & 8 EN 71-2:2006+A1:2007 – Safety of Toys-Part 2: Flammability

**VYVA**  
F A B R I C S

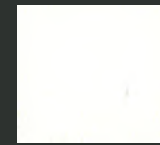
INFO@VYVAFABRICS.NL WWW.VYVAFABRICS.NL

MAGLIA

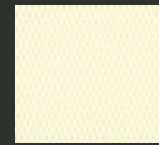
Indoor - Outdoor



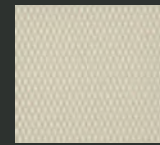
MAGLIA 15001 MAG UYUNI



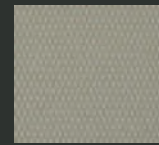
GLOBE 2378 SUGAR



GLOBE 2431 SHELL



GLOBE 2380 TUSK



GLOBE 2381 PUTTY



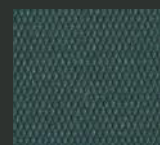
MAGLIA 12000 MAG PRIMROSE



MAGLIA 14537 MAG TRUFFLE



GLOBE 2429 WOODBINE



GLOBE 2427 ORCHARD



GLOBE 2398 IGUANA



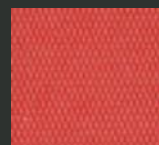
GLOBE 2399 HEDGE



GLOBE 2430 SASSY



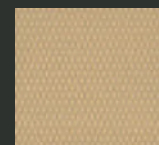
MAGLIA 10406 MAG SAGE



GLOBE 2387 RED PEPPER



14203 MAG BLOSSUM



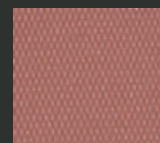
GLOBE 2392 HEMP



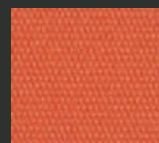
MAGLIA 16025 MAG GINGER



GLOBE 2388 CASHEW



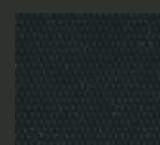
GLOBE 2434 MAUVE



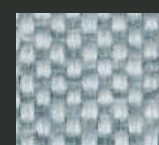
GLOBE 2383 AUTUMN



MAGLIA 14227 MAG MARS



GLOBE 2397 EBONY



14008 MAG ALASKA



GLOBE 2389 NUBIAN



MAGLIA 16016 MAG THUNDER

MAGLIA

Indoor - Outdoor



MAGLIA 16443 MAG GREENLAND



GLOBE 2423 PETROL



GLOBE 2425 CELESTE



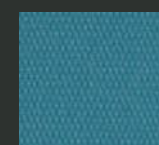
GLOBE 2428 SKYWAY



MAGLIA 10003 MAG BREEZE



GLOBE 2379 QUICKSILVER



GLOBE 2390 POOL



MAGLIA 12003 MAG SKY



GLOBE 2424 SHETLAND



MAGLIA 18022 MAG SAFARI



GLOBE 2426 ADMIRAL



MAGLIA 15559 MAG INDIGO



12420 MAG SERENITY



MAGLIA 18056 MAG URBAN



MAGLIA 10031 MAG ARMORY



MAGLIA 11702 MAG DOVETAIL



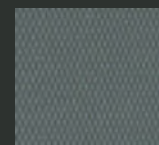
MAGLIA 13616 MAG EARTH



MAGLIA 17026 MAG GRANITE



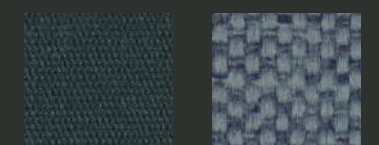
GLOBE 2385 CLIFF



GLOBE 2393 IRON



GLOBE 2421 CARBON



15450 MAG MIDNIGHT

NEW COLOURS  
MAGLIA | GLOBE

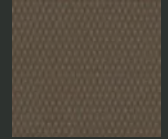
INDOOR - OUTDOOR



2457 GLOBE  
PENNY



16018 MAGLIA  
OAK



2459 GLOBE  
TERRAIN



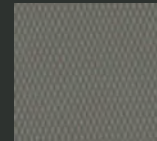
16029 MAGLIA  
HIVE



16019 MAGLIA  
GRIZZLY



2456 GLOBE  
PALE SMOKE



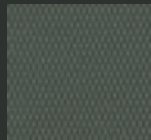
2455 GLOBE  
PATH



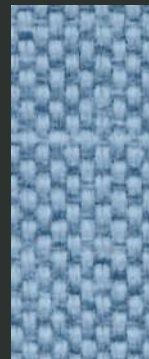
16020 MAGLIA  
MAUI



16031 MAGLIA  
ASH



2454 GLOBE  
CONCRETE



16023 MAGLIA  
KYANITE



16017 MAGLIA  
ARCTIC



2458 GLOBE  
BROOK



16021 MAGLIA  
FJORD



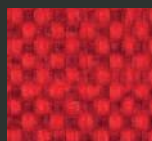
16022 MAGLIA  
SVALBARD



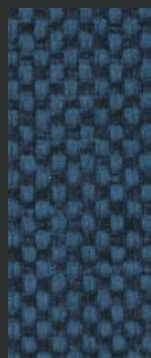
16030 MAGLIA  
ACAI



16027 MAGLIA  
TAHOE



16026 MAGLIA  
MAPLE



16028 MAGLIA  
MINUIT



16032 MAGLIA  
BLACKCAVE



16024 MAGLIA  
MONOCHROME



2460 GLOBE  
OCTOPUS



## CHARACTERISTICS INDOOR - OUTDOOR

Composition:	Topcoat :Vinyl
Backing:	100% Polyester Hi-Loft <sup>2</sup> ™
Weight:	680 gr/m <sup>2</sup>
Roll Width:	min. 137 cm
Roll Length:	+/- 30 m
Abrasion:	>100.000 cycles (MARTINDALE)
Cold Crack:	-29 °C
UV-Resistance:	ISO 105 B02:≥ 7/8 (Blue Wool Scale) ISO 104 B04:≥ 4/5 (Grey Scale)
Flame retardancy*:	EU EN 1021 Part 1 & 2 EU ECE R 118.02 Anx. 6,7 & 8 EU (MED) Marine Equipment Directive EU IMO 2010 FTP Part 8 EU EN 71-2:2006+A1:2007 Safety of Toys - part 2 DE DIN 4102 B2 IT UNI 9175 Classe 1.1M ES NE 23.727-90 1R/M.2 FR NF P 92-503 (M2) AT ÖNORM B 3825, Gruppe 1 AT ÖNORM A 3800 Teil 1 US FMVSS302 US CAL TB 117-2013, Sec. E US FAR 25/853

\*This term and any corresponding data refer to the typical performance in the specific tests indicated and should not be construed to imply the behaviour of this or any other material under actual fire conditions.

## FINISHES AND TREATMENTS

PERMABLOK<sup>3</sup>® PHTHALATE FREE  
ADVANCED VINYL PROTECTION

Virucidal Activity:	ISO 18184:2019: <sup>1</sup> Coated Fabrics treated with PERMABLOK <sup>3</sup> ® are proven to reduce the presence of Coronavirus** by more than 90% within one hour of contact. ISO 21702:2019: <sup>2</sup> All the Coated fabrics treated with PERMABLOK <sup>3</sup> ® are capable of reducing the Coronavirus** activity by 99.9% within 24 hours of exposure on the surface.
---------------------	--

Bacteriostatic Properties:	ISO 22196:2011.Value of antibacterial*** activity R>2
----------------------------	---

SUSTAINABILITY	eco <sup>sense</sup> ISO 14001 Enviromental Management Carbon Neutral REACH   RoHS
----------------	---

## SAMPLES AND ENQUIRES

samples: [samples@vyvafabrics.nl](mailto:samples@vyvafabrics.nl) | orders: [info@vyvafabrics.nl](mailto:info@vyvafabrics.nl)

## CARE AND CLEANING



For optimum care and cleaning please read the following instructions and recommendations.

### Disinfectant Use

The following information refers to the performance of PERMABLOK<sup>3</sup>® products in specifics tests, conducted under laboratory conditions. Results may vary under actual conditions:

- Asepticare TB + II • Antifect (in 0.5 % dilution) • Caviwipes XL Packed
- Cleanisept Wipes • Clorox Healthcare Bleach • Germicidal Wipes
- Coverage Plus Germicidal Wipes • Desomed rapid • FD 366
- Hydrogen Peroxide Cleaner Disinfectant Wipes • Instrunet Anionsurf
- Lysol Foaming Disinfectant Cleaner • Microzid • Oxivir TB Wipes
- Oxycide Diluted -3oz/gl in water • PDI Sani-cloth bleach wipes
- Sanicloth AF 3 • Sodium Hypochlorite. Disinfectant. Bletach cleaner. Dilution: 1:10 mix of bleach and water. • Surfanios Premium (in 0,25% dilution) • Surfa'Safe Premium (in 0,25% dilution) • Super Sani-cloth
- Virex II 256 (1:256 Dilution) • Virox 5 Rtu • Wet wipe • Wex Cide 128 (1:128 dilution)

Rinse the area with clean water, then dry with a clean, lint-free cloth after using any disinfectants and cleaners.

### Cleaning after Disinfection:

The coated fabric should be cleaned periodically in order to maintain its appearance and prevent build-up of dirt and contaminants. Any stain, spills, or soiling should be cleaned up immediately to prevent the possibility of permanent staining. Use a mixture of 1:1 liquid soap (neutral pH) and water or our approved cleaning products for coated fabrics to remove stains on the surface of the material. Completely remove excess cleaner with a white, clean, damp cloth; and dry the surfaces afterwards. Lacquers, strong cleaners, detergents, xylene-based solutions, acetone, or ketone (MEK) cause immediate damage and contribute to the deterioration of the material. The use of such cleaners is at the owner's risk.

### Cleaning methods to remove tougher stains

**Step 1:** Coffee, juice, red wine, sauces, chocolate, grease, crayon and suntan lotion. Remove excess spill with a damp cloth. Clean with a 1:1 mix of neutral liquid soap and water. Next, rinse with clean water and dry.

**Step 2:** Make-up Use a straight application of neutral PH soap. Wipe with a clean white cloth or soft brush, rinse with clean water, and dry.

**Step 3:** Blood, urine, faeces and all other tough stains Use a 1:10 mix of Isopropyl alcohol and water. Rinse thoroughly with clean water and dry.

For cleaning: use a soft white cotton cloth saturated with the recommended cleaning agent and rub the stain in random circles, ten times or more. Pat dry with another soft white cotton cloth and check the results. Do not use steel bristle brushes, abrasive scouring pads or metal, these cause permanent damage to the fabric. Methods 2 & 3 are not recommended for everyday cleaning! After cleaning, rinse the area with clean water, then dry with a clean, lint-free cloth. Failure to remove chemical residue will cause discolouration of the coated fabric surface to manifest itself earlier in the life cycle of the product.

