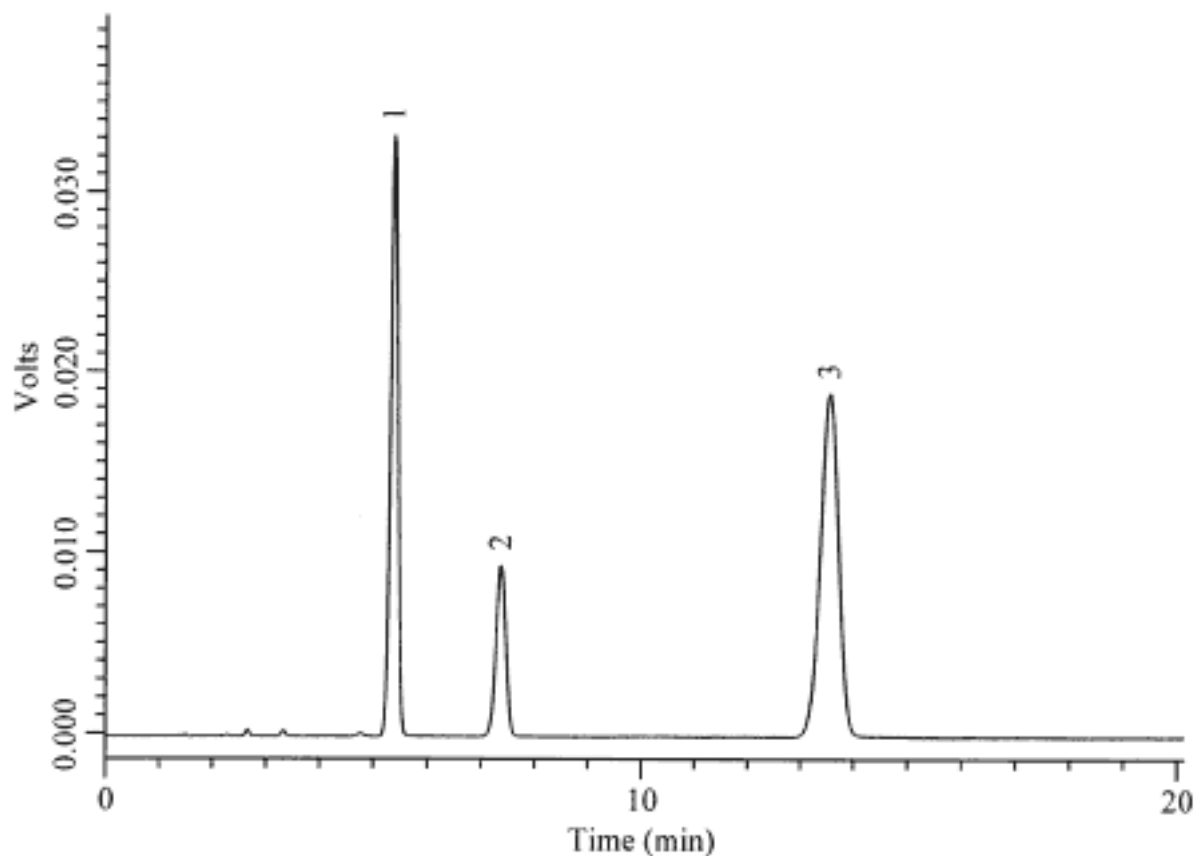


## 18. Analysis of Steroids

Data No. LA073-0000



Column	: Inertsil ODS-3V 150 × 4.6 mm I.D.	Solutes	: 1. $\beta$ -Trenbolone (100 $\mu$ g/mL) 2. $\beta$ -Estradiol (100 $\mu$ g/mL) 3. Diethylstilbestrol (100 $\mu$ g/mL)
Column Cat. No.	:		
Eluent	: CH <sub>3</sub> CN/H <sub>2</sub> O = 45/55		
Flow rate	: 1.0 mL/min.		
Col. Temp.	: 40°C		
Detection	: UV 280 nm		
Injection Vol.	: 5 $\mu$ L		
Sample	: Steroids		