



FREEMAN
MARINE EQUIPMENT

ADVANTEC ADVANTAGE



3 YEAR
HASSLE-FREE
WARRANTY

WE ARE PASSIONATE ABOUT DELIVERING

RELIABLE *SOLUTIONS*
SUPERIOR *QUALITY*
WORLD-CLASS *SUPPORT*

PRODUCT CATALOG



Proudly part of the **AdvanTec** family of brands



ADVANTEC GLOBAL INNOVATIONS



ADVANTECGLOBAL



ADVANTEC MARINE

WWW.ADVANTECGLOBAL.COM

ADVANTEC ADVANTAGE



3 YEAR
HASSLE-FREE
WARRANTY

WE ARE PASSIONATE ABOUT DELIVERING

RELIABLE **SOLUTIONS**
SUPERIOR **QUALITY**
WORLD-CLASS **SUPPORT**

OPENING THE FUTURE TO SECURITY AT SEA

CRAFTSMAN TRAINING AND CERTIFICATION

Freeman Marine craftsmen participate regularly in training and certification programs to gain new skills, update capabilities and certify compliance with industry standards for design, machining, welding, fabrication, painting and other specialized skills. Our goal is to constantly improve not only its products but also the quality of life and work of its valued employees.

ADVANTEC MANUFACTURING USA - FACTORY APPROVALS

CERTIFICATE OF MANUFACTURING ASSESSMENT
BV MODE II | ISO 9001:2015



FREEMAN CLOSURES HAVE RECEIVED ACCEPTANCE:

- DNV - Det Norske Veritas
- LR - Lloyds Register of Shipping
- GL - Germanischer Lloyd
- BV - Bureau Veritas
- ABS - American Bureau of Shipping
- MCA - Maritime Coastguard Agency
- USCG - US Coast Guard
- CCG - Canadian Coast Guard (Transport Canada)

TYPE APPROVALS

2400 Series Watertight Hatches: Cert # 23-2417921-PDA

2400 Series Watertight Hatches: Cert # LR23366654TA

1212 & 1662 Watertight & Weathertight: Cert # 23-2402820-PDA

1212 Watertight Door: Cert # 23-2402821-PDA

3212 Raised Watertight Hatches: Cert # 23-2402822-PDA

3211 Flush Watertight Hatches: Cert # 23-2402819-PDA



OUR WARRANTY

All Non-Powered Equipment:

- Platinum Warranty - 3 years from date of shipment

All Powered Equipment:

- Standard Warranty - 2 years from date of shipment
- 1 year extension - Onsite commissioning required by AdvanTec Marine or certified technician

Scan for more information



TABLE OF CONTENTS

DOORS

STANDARD DUTY WEATHERTIGHT	4
HEAVY DUTY WEATHERTIGHT	6
HEAVY DUTY STEEL WEATHERTIGHT	8
HEAVY DUTY STEEL 1213 SERIES	10
PREMIUM DUTY ALUMINUM 1420 SERIES	11
SLIDING WEATHERTIGHT STANDARD DUTY	12
PREMIUM DUTY SLIDING DUAL AXIS	14
SLIDING WEATHERTIGHT TOP HUNG SERIES	16
PREMIUM DUTY WATERTIGHT	18
HEAVY DUTY WATERTIGHT COMMERCIAL SERIES	20

HATCHES

PREMIUM DUTY WATERTIGHT HATCHES	22
COMMERCIAL HEAVY DUTY WATERTIGHT HATCHES	23

CAST ALUMINUM CLOSURES 24

COMPOSITE CLOSURES 26

NAVSEA 28

DOORS	29
SCUTTLES	30
HATCHES	31

GLOSSARY 32

SERVICE & SUPPORT 35

STANDARD DUTY WEATHERTIGHT

1111, 1511 & 1611 SERIES

The Freeman Marine Standard Duty Series Door is an aluminum weathertight door that offers a balance of simplicity and flexibility. It can be configured to meet specific needs, making it a versatile choice for various applications. The door is compatible with different bulkhead constructions and offers choices for door frames in aluminum, steel, or stainless steel materials. It's ready for clamp-in, bolt-in, or weld-in installations. This door is a practical and reliable choice for those seeking quality and adaptability.

CONSTRUCTION

- Marine grade aluminum .080" to .160" panel thickness outside and inside bonded with Plexus® structural adhesive
- Welded aluminum, steel or stainless steel frame options with radius or mitered corners
- Neoprene black 35 durometer gasket, weathertight compression sealing
- Glass filled striker wedges with isolation to dissimilar metals & Tef-Gel on all fasteners to ensure long-life without corrosion
- Foil-Faced Foam is a rigid polyisocyanurate foam that provides exceptional heat, sound and moisture resistance

STANDARD FEATURES

- Stainless-steel butt hinges
- Black nylon individual dogs
- TrioVing locksets
- Neoprene black gasket
- 6mm Clear DiamondTemp
- Buffed aluminum finish

UPGRADED FEATURES

- Concealed or hidden hinge
- Flush aluminum or pocket dogs
- Polished stainless steel dogs
- Keyless entry or GSA approved lock
- EMI gasketing
- Manual hold-open
- Painted Awlgraft 2000 finish



STANDARD DUTY WEATHERTIGHT



1111 SERIES

SINGLE PANEL

EXTERIOR



INTERIOR



1511 SERIES

DUTCH PANEL

EXTERIOR



INTERIOR



1611 SERIES

FRENCH PANEL

EXTERIOR



INTERIOR



HEAVY DUTY WEATHERTIGHT

1120, 1520 & 1620 SERIES

Doors designed for use on commercial workboats, military vessels, and passenger ferries, boast a sturdier construction. These doors are crafted from marine-grade materials that meet class-approved standards, and they feature robust welded construction with added internal reinforcements. With no exposed seams, these doors ensure a rugged and durable closure that is built to withstand the test of time, promising a lifetime of reliability.

CONSTRUCTION

- Marine graded aluminum panel thickness of .160" or .250" welded design with interior bonded panel
- Foil-Faced Foam is a rigid polyisocyanurate foam that provides exceptional heat, sound and moisture resistance
- Internal welded stiffeners added strength
- Glass filled striker wedges with isolation to dissimilar metals & Tef-Gel on all fasteners to ensure long-life without corrosion
- Neoprene black 35 durometer gasket, weathertight compression sealing
- Weld-in, clamp-in or bolt-in frame options with fixed and or adjustable compression gasket carriers
- Radius or mitered corners available

STANDARD FEATURES

- 3/8" Clear DiamondTemp glass
- TrioVing lockset
- Neoprene 35 durometer
- Aluminum individual dogs
- Buffed aluminum finish

UDGRADED FEATURES

- Keyless entry or GSA approved lock
- EMI gasket or high heat
- Single lever quick-acting dogs
- Heat trace - arctic climate vessels
- Door closer or hold opens
- Painted Awlcraft 2000



HEAVY DUTY WEATHERTIGHT



1120 SERIES

SINGLE PANEL



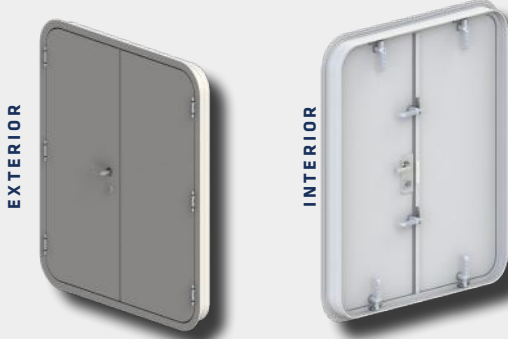
1520 SERIES

DUTCH PANEL



1620 SERIES

FRENCH PANEL



HEAVY DUTY STEEL WEATHERTIGHT

1223, 1523 & 1623 SERIES

This product represents more than just an ordinary door; it embodies a robust and substantial construction, featuring a removable interior door panel. It's specifically engineered for demanding commercial applications, including workboats, military vessels, and specialized civil engineering projects. Crafted from A36 steel or 304/316 stainless steel, this door is built to withstand heavy usage, making it an ideal choice for high-traffic access points. It adheres to class-approved design standards, making it the preferred option for the US Navy.

CONSTRUCTION

- ABS grade 11 gauge A36 steel, 304 stainless or 316L stainless welded exterior door panel design with 16 gauge removable inner panel
- Foil-Faced Foam is a rigid polyisocyanurate foam that provides exceptional heat, sound and moisture resistance
- Internal welded stiffeners added strength
- Glass filled striker wedges with isolation to dissimilar metals & Tef-Gel on all fasteners to ensure long-life without corrosion
- Neoprene black 35 durometer gasket, weathertight compression sealing
- Weld-in, clamp-in or bolt-in frame options with fixed and or adjustable compression gasket carriers
- Radius or mitered corners available

STANDARD FEATURES

- 3/8" Clear DiamondTemp glass
- TrioVing lockset
- Neoprene 35 durometer
- Heavy duty 4.5" x 4.5" butt hinges
- Aluminum or forge steel individual dogs
- Primed or buffed finish

UDGRADED FEATURES

- AO, A15, A30 & A60 Fire Rated
 - MED Certified / DNV GL
- EMI Specialized or high heat
- Keyless Entry or GSA approved lock
- EMI gasket or high heat
- Single lever quick-acting dogs
- Welded blade hinges
- Heat trace - arctic climate vessels
- Door closer or hold opens
- Painted Awlcraft 2000
- DiamondLam or specialized glazing



HEAVY DUTY STEEL WEATHERTIGHT

1223 SERIES

SINGLE PANEL



EXTERIOR



INTERIOR



1523 SERIES

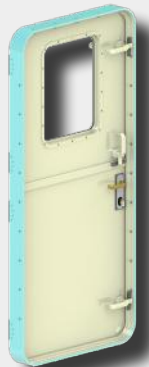
DUTCH PANEL



EXTERIOR



INTERIOR



1623 SERIES

FRENCH PANEL



EXTERIOR



INTERIOR



HEAVY DUTY STEEL 1213 SERIES

COMMERCIAL, WEATHERTIGHT

The 1213 Series Door is not just built, but meticulously crafted. It features a class-approved design construction, ensuring it meets the highest standards of quality and safety. The door is break-formed and boasts full seam welded construction, carried out by certified welders. This attention to detail results in a robust and durable structure that stands up to the test of time.

CONSTRUCTION

- ABS grade 11gauge A36 steel, 304 stainless or 316L stainless welded door panel design
- Foil-Faced Foam Sheathing Board, which is a rigid polyisocyanurate foam sheathing that provides exceptional heat, sound and moisture resistance
- Internal welded stiffeners added strength
- Glass filled striker wedges with isolation to dissimilar metals & Tef-Gel on all fasteners to ensure long-life without corrosion
- Neoprene black 35 durometer gasket, weathertight compression sealing
- Radius or mitered corners available
- Weld-in, clamp-in or bolt-in frame options with fixed and or adjustable compression gasket carriers



STANDARD FEATURES

- 3/8" Clear DiamondTemp glass
- Foil-faced foam board
- TrioVing lockset
- Neoprene 35 durometer
- Black nylon individual dogs
- Primed red oxide (Steel) or buffed finish (S/S)

UDGRADED FEATURES

- DiamondLam or specialized glazing
- Ballistic or mineral wool insulation
- Keyless Entry or GSA approved lock
- EMI gasketing or high heat
- Single lever quick-acting dogs
- Welded blade hinges
- Heat trace - Artic climate vessels
- Door closer or hold open
- Painted Awlcraft 2000



PREMIUM DUTY ALUMINUM 1420 SERIES

QUICK-ACTING WEATHERTIGHT

The 1420 Series is a single leaf, heavy duty, quick-acting door that is designed for high traffic access installations. It features a patented chain-drive mechanism that allows for easy and fast opening and closing of the door with a single handle. The door panel is made of thick aluminum with welded frame and skin construction, ensuring durability and weather tightness. The door can also accommodate full length, centrally located windows or special glazing, as well as unique shapes, camber, knuckles and sloping surfaces. For over three decades, the Freeman Marine 1420 Series door has been the trusted choice of the USCG for their rollover response boats, providing reliable protection and safety for our borders and lives. The Freeman Marine Model 1420 is suitable for pilothouse, galley, engine room, salon, main deck and staterooms applications.

CONSTRUCTION

- Marine graded .160" or .250" marine grade aluminum skins welded panel design with interior bonded or removable inner door skin
- Foil-Faced Foam Sheathing Board, which is a rigid polyisocyanurate foam sheathing that provides exceptional heat, sound and moisture resistance
- Internal welded stiffeners added strength
- Glass filled striker wedges with isolation to dissimilar metals & Tef-Gel on all fasteners to ensure long-life without corrosion
- Neoprene black 35 durometer gasket, weathertight compression sealing
- Radius or mitered corners available
- Weld-in, clamp-in or bolt-in frame options with fixed and or adjustable compression gasket carriers



STANDARD FEATURES

- 3/8" Clear DiamondTemp glass
- TrioVing lockset
- 4.5" x 4.5" 316L butt hinges
- Quick-acting roller dogs
- Buffed aluminum finish

UDGRADED FEATURES

- DiamondLam, specialized or ballistic glass
- Keyless entry or GSA approved lock
- EMI gasketing
- Welded blade or concealed hinges
- Heat trace - arctic climate vessels
- Vented louver
- Door closer or hold opens
- Painted Awlcraft 2000



SLIDING WEATHERTIGHT STANDARD DUTY

1710 & 1716 SERIES

FREEMAN MARINE'S Single-Axis sliding doors offer traditional felted strip weather tight sealing. Sliding doors can be specified in virtually any size required and a variety of configurations; single panel, bi-parting, and multi-panel styles. Custom sized windows designed to complement adjacent vessel windows can be ordered. Passive solid panels as well as sidelights are also available. FREEMAN Sliding doors are finished in yacht-quality linear polyurethane and offer attention to detail, durability, performance and style not found in lighter duty, ordinary sliding doors.

CONSTRUCTION

- Marine grade aluminum construction panel construction offers customizable window sizing or full glass design
- Aluminum welded frame construction with double felt strip weather seal and deep drainage gutters design
- Noise isolating urethane roller
- Flat panel or knuckle shape design available

STANDARD FEATURES

- Manually operated
- TrioVing lockset
- Manual 316L drop-bolt hold-open
- DiamondTemp 3/8" thick glass
- Aluminum buffed finish

UDGRADED FEATURES

- Automatic operation system
- Keyless entry
- DiamondFrit full glass window
- Awlcraft 2000 finish
- Counterpull bi-parting door



SLIDING WEATHERTIGHT STANDARD DUTY



EXTERIOR VIEW



INTERIOR VIEW



1710 SERIES

EXTERIOR VIEW



INTERIOR VIEW



1716 SERIES

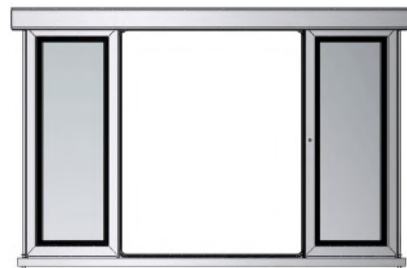
FMDS AUTOMATIC DOOR SYSTEM

STANDARD COMPONENTS

- Vandal proof Piezo, lighted bezel.
- 115VAC or 230VAC
- Plug and Play Cabling
- 4 position mode switch
 - Off
 - AUTO (2 Way)/ Normal
 - Exit (1-way)
 - Hold Open

OPTIONAL COMPONENTS

- Safety
- UPS Battery Back-up
 - Photoelectric safety beams
 - Edge Sensors
- Activation
- Over Head Radar
 - Touchless Hand Wave
 - Security Keypad
 - Inflatable Gasket



Electric Motor



Sealed Piezo Buttons



Touch Screen

PREMIUM DUTY SLIDING DUAL AXIS

1720 & 1726 SERIES

FREEMAN MARINE'S Dual-Axis sliding door series with a patented camming mechanism and full perimeter elastomer gasket provide excellent performance when aggressive spray and splashed weather tight sealing is required. Sliding doors can be specified in virtually any size required and a variety of configurations; single panel or bi-parting configurations. Custom sized windows designed to complement adjacent vessel windows can be ordered. Passive solid panels as well as sidelights are also available.

CONSTRUCTION

- Marine graded .160" or .250" marine grade aluminum skins welded panel design with removable inner door skin
- Cam-actuated weathertight sealing
- Noise isolating urethane roller system
- Isolation to dissimilar metals & Tef-Gel on all fasteners to ensure long-life without corrosion

STANDARD FEATURES

- Manually operated single lever actuated mechanism creates a weather tight, full perimeter, positive gasket seal when the door is fully closed and "cammed-in"
- Camming also acts as a hold open feature to secure the door panel in a stationary position at any point along its track
- TrioVing statin finish locksets
- Black, neoprene 35 durometer gasket
- DiamondTemp 3/8"
- Aluminum buffed finish

UDGRADED FEATURES

- Automatic operation system
- Keyless entry or GSA approved locks
- EMI gasketing
- DiamondLam or specialized glazing
- Awlcraft 2000 finish



PREMIUM DUTY SLIDING DUAL AXIS



EXTERIOR VIEW



INTERIOR VIEW



1720 SERIES

EXTERIOR VIEW



INTERIOR VIEW

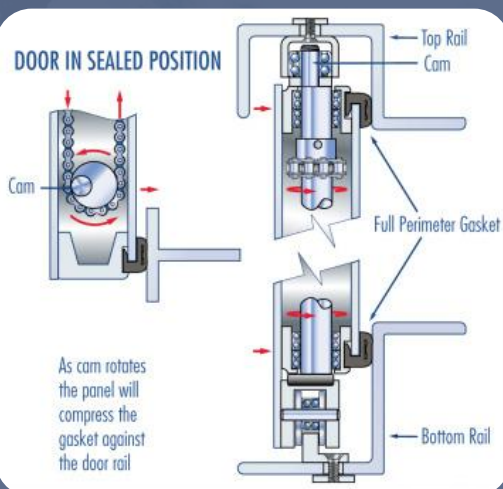


1726 SERIES

FREEMAN MARINE DUAL AXIS SLIDING DOOR

A patented design exclusively from Freeman Marine Single lever actuated mechanism creates a weather tight, full perimeter, positive gasket seal when the door is fully closed and "cammed-in." Ideal for both exterior and interior applications, camming ability also acts as a hold open feature to secure the door panel in a stationary position at any point along its track.

USA Patent #5,542,213



SLIDING WEATHERTIGHT TOP HUNG SERIES

1730 & 1736 SERIES

Freeman Marine's heavy duty top hung sliding boat doors offer inflatable gasket for superior weathertight sealing. Sliding doors can be specified in virtually any size required and in a variety of configurations in either single or multi panel flat panel or curved design. Custom sized windows designed to complement adjacent vessel windows can be ordered with passive solid panels as well as full glass sidelights.

CONSTRUCTION

- Marine grade aluminum construction panel construction offers customizable window sizing or full glass design
- Top hung roller system with "J" track anodized black finish for long-lasting durability

STANDARD FEATURES

- Manual operation - TrioVing satin finish lockset
- Manual hold-open
- Single durable felt seal with wiper
- DiamondFrit ½" thick glazing clear or grey tint
- Low profile hidden bottom track slide
- Aluminum buffed finish

UPGRADED FEATURES

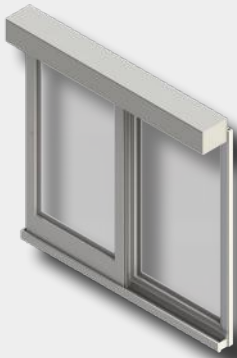
- Automatic operation - Whisper Drive "Plug & Play" Control System
- Overhead radar sensor or wave sensor
- Keyless entry or GSA approved lock
- Inflatable gasket with self-enclosed inflate/deflate pump
 - o Ship supplied air required
- ADA sill height or flush sill available
- DiamondLam or specialized glazing
- Awlcraft 2000 finish



SLIDING WEATHERTIGHT TOP HUNG SERIES



EXTERIOR VIEW

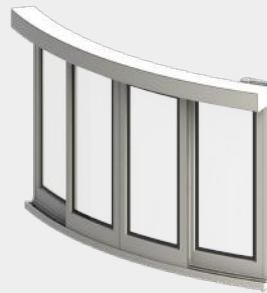


INTERIOR VIEW



1730 SERIES

EXTERIOR VIEW



INTERIOR VIEW



1736 SERIES

WHISPER DRIVE

Plug & Play marine grade automatic door control system:

(4) Mode touch screen:

- Sea
- Port
- Full Open
- Housekeeping
- Exterior | Interior Led Piezo's
- Eye beam sensors
- Up to 500lbs per panel capacity
- Security pin lock
- Inflatable gasketing
- Back battery power-pack
- Adjustable speeds & hold-open time



Overhead
Sensor



Touch
Screen



Back-up
Battery



Inflatable
Gasket

PREMIUM DUTY WATERTIGHT

1140 & 1440 SERIES

Freeman Marine 1140 & 1440 Series Doors are heavy-duty, single aluminum panel, watertight door designed for commercial use on boats. It's solidly constructed, fully insulated, and high quality, making it suitable for commercial, military, and yacht crew or machinery space applications. Suitable for applications such as engine rooms, storage compartments, and other areas that require watertight access

CONSTRUCTION

- Rugged knife-edge seal, robust silicone gasket, and floating durable hinges to provide a commercial watertight seal when properly adjusted and dogged closed
- Marine grade aluminum panel skins from .160" up to .250", with extra internal reinforcements, welded construction
- Heavy-duty aluminum, steel or stainless steel door frame available

STANDARD FEATURES

- Aluminum buffed finish
- Aluminum blade hinges, floating
- Individual aluminum stainless steel roller dog.
- Welded-in window 3/8" clear DiamondTemp
 - 6", 10" or 12" Round
 - Custom size available
- Black or white silicone gasket
- TrioVing lockset or rim lock

UDGRADED FEATURES

- Awlcraft 2000 finish
- Concealed hinge
- Aluminum Flush pocket dogs
- Central wheel operation
- DiamondLam or other specialized glazing
- Louvers or removable sill plate
- Door closure or hold-open
- EMI gasketing
- GSA approved cypher lock



PREMIUM DUTY WATERTIGHT



EXTERIOR VIEW

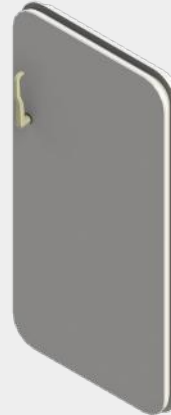


INTERIOR VIEW



1140 SERIES

EXTERIOR VIEW



INTERIOR VIEW

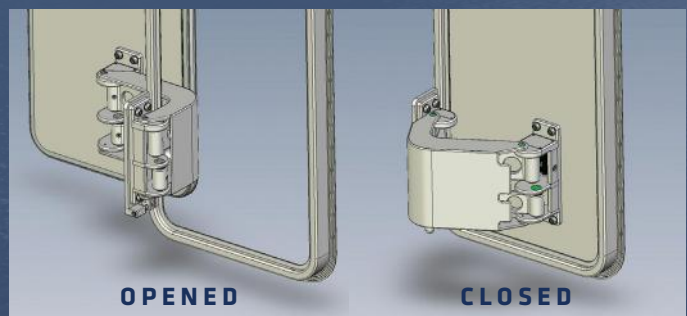


1440 SERIES

PANTOGRAPH HINGE

Freeman Marine Pantograph Hinge allows the door or hatch to open with minimal clearance and is ideal for transoms and narrow bulwarks.

- Aluminum painted hinge
- Available hinges
 - 14" Hinge [24" to 27"]
 - 17" Hinge [27" to 38"]
 - 23" Hinge [38" to 46"]
- Manual hold-open



OPENED

CLOSED

HEAVY DUTY WATERTIGHT COMMERCIAL SERIES

1212 & 1662 SERIES

The Freeman Marine Model 1212 & 1662 doors are class-approved, heavy-duty commercial watertight doors designed for marine as well as non-marine civil construction projects. It's designed to withstand high design pressures for internal "unseating" or external "seating", making it an excellent choice for marine and civil engineering projects. The door is solidly constructed, suitable for high traffic access installations, and built to last. Its robust construction and design ensure it meets rugged requirements. Applications such as engine rooms, storage compartments, and other areas that require large watertight access.

CONSTRUCTION

- Class accepted construction
- ABS grade A36 steel, marine grade aluminum, 304 stainless or 316L stainless welded door panel design
- Internal welded stiffeners added strength
- Isolation to dissimilar metals & Tef-Gel on all fasteners to ensure long-life without corrosion
- Neoprene black gasket, watertight "knife-edge" sealing
- Radius or mitered corners available

STANDARD FEATURES

- Quick-acting bronze friction dogs
- Individual steel dogs
- Stainless-steel lever handle with linkage operation
- Finish, sand-blasted with red oxide primer
- Black neoprene gasket

UDGRADED FEATURES

- Stainless steel roller dogs, high pressure
- Wheel and gear reduction operation
 - Create more torque when dogs exceeds (8+) dogs per design req.
- Awlcraft 2000 or industrial coatings
- Door closer or hold-opens
- Hasp & eye
- Security locks or GSA approved lock
- EMI or high heat gasket

HEAVY DUTY WATERTIGHT COMMERCIAL SERIES



EXTERIOR VIEW



INTERIOR VIEW



1212 SERIES

EXTERIOR VIEW



INTERIOR VIEW



1662 SERIES

FIRE RATED

We offer a wide range of fire doors (A0, A15, A30 and A60), able to withstand flame test up to 60 minutes (depending on the type of door).

- A0, A15, A30 & A60 Fire Rated Doors
- MED Certified / DNV GL



PREMIUM DUTY WATERTIGHT HATCHES

INDIVIDUAL DOG

Freeman Marine 3140 Series hatches are manufactured from marine grade aluminum, with an option for steel or stainless-steel coamings, flush or raised.



QUICK-ACTING

Freeman Marine 3440 Series hatches are manufactured from marine grade aluminum, with an option for steel or stainless-steel coamings, flush or raised.



STANDARD FEATURES

- Aluminum buffed finish
- Aluminum blade hinges, floating
- Individual aluminum stainless steel roller dog.
- Black or white silicone gasket

UDGRADED FEATURES

- Awlcraft 2000 finish
- Concealed hinge
- Aluminum Flush pocket dogs
- Central wheel operation
- DiamondLam or other specialized glazing
- Louvers or removable sill plate
- Door closure or hold-open
- EMI gasketing
- GSA approved lock



COMMERCIAL HEAVY DUTY WATERTIGHT HATCHES

FLUSH

Freeman Marine's Model 3211 is a flush hatch, that is class approved, manufactured in marine grade aluminum, A36 steel or 304/316 stainless-steel.



RAISED

Freeman Marine's Model 3212 is a raised hatch, that is class approved, manufactured in marine grade aluminum, A36 steel or 304/316 stainless-steel.



STANDARD FEATURES

- Quick-acting bronze friction dogs
- Individual steel dogs
- Stainless-steel lever handle with linkage operation
- Finish, sand-blasted with red oxide primer
- Black neoprene gasket

UDGRADED FEATURES

- Stainless steel roller dogs, high pressure
- Wheel and gear reduction operation.
 - Create more torque when dogs exceeds (8+) dogs per design req.
- Awlcraft 2000 or industrial coatings
- Door closer or hold-opens
- Hasp & eye
- Security locks or GSA approved lock
- EMI or high heat gasket

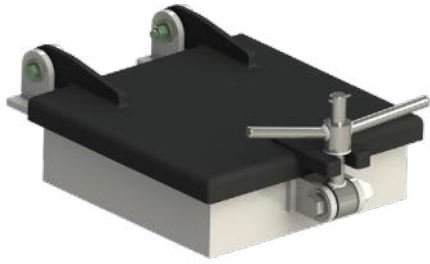
CAST ALUMINUM CLOSURES

Freeman Marine is a leading manufacturer of high-quality custom aluminum castings for various marine and civil engineering projects. Freeman Marine has an extensive aluminum foundry that can produce complex and precise castings in different sizes and shapes, using state-of-the-art equipment and techniques. Freeman Marine has a long history of supporting the maritime industry with its innovative and durable products, as well as the US Navy (LCAC/SSC) and the US Coast Guard (47' MLB/45' RB-m) with their various programs. Freeman Marine has also provided aluminum cast hatches for civil projects such as floating pontoon bridges, airports, and various survival compartment and water mitigation projects. Freeman Marine has the experience, the facilities, and the staff capabilities to make your project an on-time success. Whether you need standard or specialty aluminum casting, Freeman Marine can deliver the best solution for your needs

CAPABILITIES

- Full in-house casting capabilities
 - Concept, 3D design & full FEA
 - In-house patterns
 - Aluminum foundry - 535.2 or A356 ALMAG
 - Machine shop
 - ISO 9001:2015 Certified
- Lightweight, thin wall castings
- T6 Heat treatment
- Varying finish types
 - Powder coat black or white powder
 - Awlcraft 2000 wet-paint system
 - Hard-coat anodizing





VENTILATION HATCHES

- 2120-0002 10" x 10"
- 2121-0002 10" x 12"
- 2122-0002 12" x 12"

EXTERIOR VIEW



INTERIOR VIEW



CONSOLE DOOR

- Model 6101-0002 11" x 23"
- Model 6101-0004 9" x 18"
- Model 6101-0005 18" x 28"



LENS HATCH

- Quick-acting watertight
- Clear opening 25.5" x 25.5"



INTERIOR ACCESS HATCH

- Clear opening 24.3" x 24.3"
- Flush slam latch
- Neoprene gasket



CIVIL ENGINEERING HATCHES

- Floating Bridge
- Sewer & Dams
- Airport & Ports
- Commerical Buildings



FLUSH SHORE POWER HATCH

- Watertight
- Flush Weld-In
- Available sizes:
 - 9" x 15"
 - 11" x 20"



COMPOSITE CLOSURES

With carbon fiber and FRP materials, Freeman Marine offers marine doors and hatches that are watertight and weathertight. These composite products are much lighter than aluminum ones, weighing only about 33% as much. They are also much stronger pound for pound, with up to eight times the strength of aluminum. Moreover, they have excellent resistance to corrosion and can be customized in size, features and finish. Carbon fiber also has some other advantages over aluminum or steel, such as:

- Offers better heat conduction and thermal expansion properties, which means it can withstand temperature changes and dissipate heat more efficiently
- Higher rigidity and responsiveness, which improves handling and performance
- It can be repaired if it cracks, unlike metal which may need to be replaced.
- Allowing for more unique and aerodynamic shapes, which can enhance the aesthetics and efficiency of the products

Freeman Marine superior experience for over 40 years of building world class products is elevated with our Composite Closures.





DOORS

DOORS

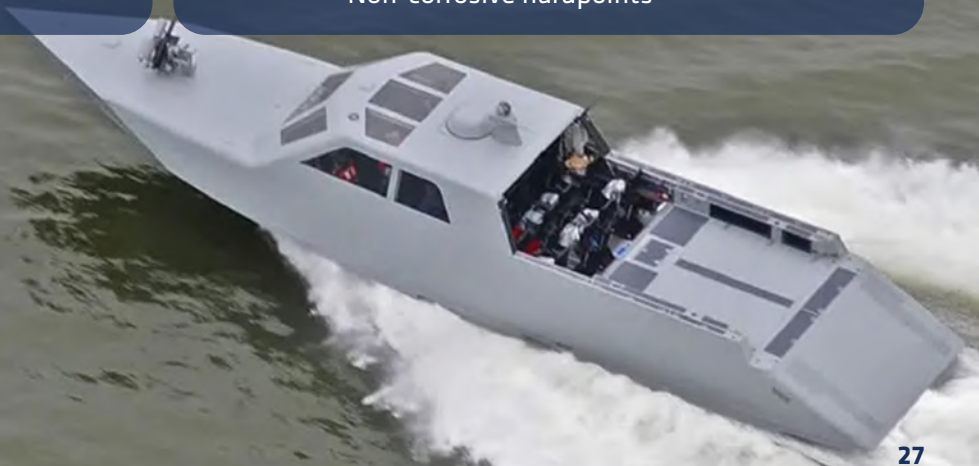
- Standard TrioVing locket
 - Upgraded GSA approved locks
- Bridge notifications sensors
- Standard DiamondFrit glazing
 - Upgraded Ballistic insulation & glass
- Individual or quick-acting dogging
- Fully isolated components
- Non-corrosive hardpoints



HATCHES

HATCHES

- Smooth flush painted surface
 - Upgrade non-skid in mold
- Flush or concealed hinging
- Gutter drainage prepared
- Exterior recessed integrated handle
 - Removable "T" wrench
 - Flush bi-square
 - Optional bi-square keyed lock
- Fully isolated components
- Non-corrosive hardpoints



FREEMAN MARINE

NAVSEA

PREMIUM MILITARY CLOSURES

Our products are engineered to meet the rigorous standards of the Naval Sea Systems Command (NAVSEA) for water and fire resistance, shock and vibration resistance, and long-term durability. Our products are also certified by the Navy for robotic welding, which ensures state-of-the-art quality and precision. Freeman Marine offers a wide range of NAVSEA products, such as hinged flush and raised hatches and individual or quick-acting dogged doors, in various sizes and finishes to suit any naval or coast guard application. Our products are made of premium materials, such as aluminum, steel, or stainless steel, and feature reliable hardware and seals. Freeman Marine's NAVSEA products are trusted by naval and coast guard customers around the world for their superior performance, safety, and reliability. Freeman Marine is proud to serve those who protect us by opening the future to security at sea. For the best NAVSEA products in the market, backed by the best service and warranty, call Freeman Marine.





**ROBOTIC
WELDER**

DOORS



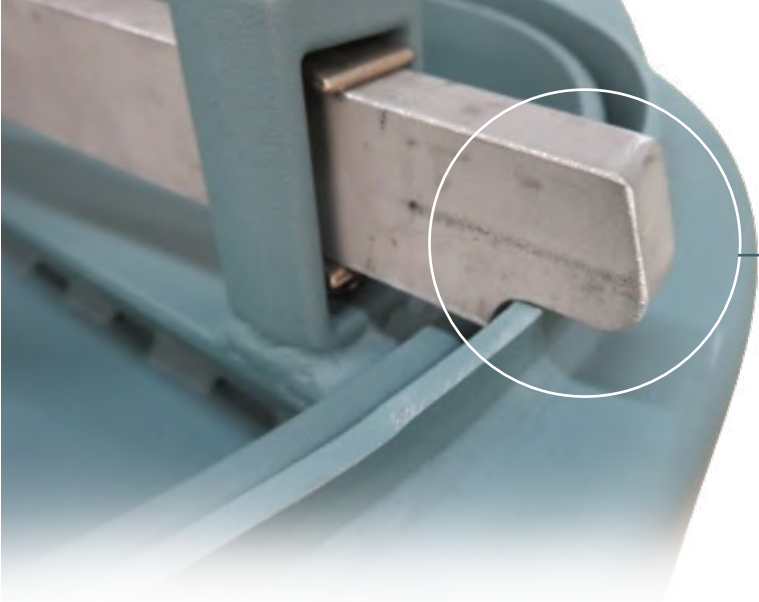
**DOG
DETAILS**

- CAPABILITIES**
- Weathertight & watertight doors
 - Aluminum, steel & stainless-steel
 - Quick-acting & individual dogging
 - Shock & fire rating qualifications
 - Robotic certified welding
 - ISO 9001:2015 Certified
 - Quality control & testing - NAVSEA Mil Spec 248/1689



**HINGE
DETAILS**





**LOCKING
DOG**



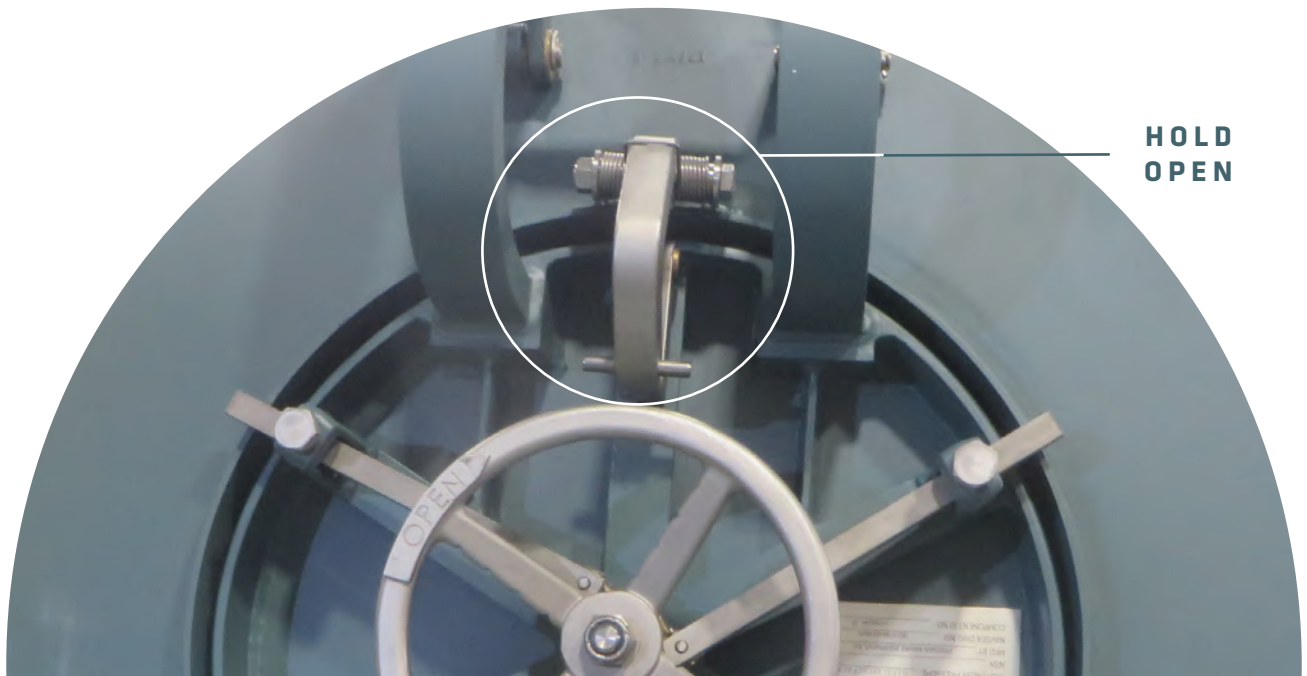
SCUTTLES

CAPABILITIES

- High-pressure watertight
- Flush, ramped & raised coamings
- Quick-acting & individual dogging
- Shock & fire rating qualifications
- ISO 9001:2015 Certified
- Quality control & testing - NAVSEA Mil Spec 248/1689

FEATURES

- Hold-opens
- Adjustable dogs
- Knife-edge watertight sealing
- Silicone high-heat gasketing
- Aluminum, steel & stainless-steel
- Quick-acting & individual dogging



**HOLD
OPEN**



HATCHES

CAPABILITIES

- Watertight
- Aluminum, steel & stainless-steel
- Flush & raised coamings
- Integrated scuttle
- Quick-acting, drop-bolt & individual dogging
- Shock & fire rating qualifications
- ISO 9001:2015 Certified
- Quality control & testing - NAVSEA Mil Spec 248/1689

FEATURES

- Hold-opens
- Adjustable dogs
- Knife-edge watertight sealing
- Silicone high-heat gasketing
- Aluminum, steel & stainless-steel
- Quick-acting, drop-bolt & individual dogging

SILICONE
HIGH TEMP
GASKET



DROP
BOLT



ADVANTEC MARINE DEFINITIONS

DOORS/HATCHES

OVERALL SIZE MEASUREMENT (OSM)

Outside measurement of frame width & height.

ROUGH OPENING

Opening in bulkhead, often referred to as “plate-cut”

SPIGOT

Section of frame that protrudes through rough opening.

CLEAR OPENING

Is the opening that you can physically pass through when the door/hatch is in full open position.

INDIVIDUAL DOG SET (S)

Individually operated dogs (cleats) used to secure door/hatch for weathertight & watertight application.

Variations of Interior & Exterior options available.

QUICK-ACTING DOG (S)

Lever or wheel used to operate multiple dogs with a single operation.

BLIND DOG (S)

Interior operated only, can be individually operated dog or quick-acting.

DOOR/HATCH FRAME

Main frame installed into bulkhead that the door/hatch insert will be fitted to & seal to.

DOOR/HATCH INSERT

Door/hatch panel mounted to the frame via hinges or can be supplied as lift-out.

BOLT-IN

Door/hatch main frame is installed and secured to bulkhead via mechanical fasteners.

WELD-IN

Door/hatch main frame is installed and secured to bulkhead via welding method.

CLAMP-IN

Door/hatch main frame is installed and secured to bulkhead via interior clamp ring.

DOOR HANDING

Hinge doors refer to direction of the door swing when viewed from outside looking at key cylinder side.

Insert swings outward, Left-hand (LH) hinge on left or right-hand (RH) hinge on right.

Sliding doors refer to direction of slide (again viewed from exterior), left-hand sliding (LHS), door slides left or right-hand sliding (RHS), door slides right.

LOCKSET

Lockset assembly includes - lever handles, lock case, keyed exterior cylinder, interior thumb-turn & supplied with roses or escutcheons plate.

Available in satin or chrome polished.

DEADBOLT ONLY (NON-LATCHING)

Includes - lock case, keyed exterior cylinder, interior thumb-turn & round roses or rectangular escutcheons plates.

Available finishes are satin or polished chrome.

PASSAGE SET

Includes - lever handles, passage lock case & round roses or rectangular escutcheons plates.

Available finishes are satin or polished chrome.

WEATHERTIGHT

Designed to withstand and prevent the ingress of water exterior. Typically used above the waterline.

WATERTIGHT

Will withstand water to a defined head pressure from exterior seating &/or both exterior seating & interior unseating pressures. Typically used below the waterline locations such as engine rooms, watertight boundaries & transoms.

ADVANTEC MARINE DEFINITIONS

FINISHES

ANODIZED - TYPE I (STANDARD)

Chromic Acid anodizing is a metal coating process used when the application calls for a thin coating and a high level of corrosion resistance. MIL-A-8625F type I

ANODIZED - TYPE II (HARDCOAT)

Proven electrochemical process that transforms a plain metal surface into an engaging exterior that provides both advanced corrosion-resistance and durability. MIL-A-8625 Type II

MILL FINISH

Mill finish is the as extruded appearance of aluminum, no external mechanical or chemical finishing to the surface of the metal.

BUFFED FINISH

Buffed with an orbital sander, no chemical finishing to the surface of the metal.

POWDER-COAT

Electrostatically charged coloured powder that is applied to the metal and then baked on to provide a protective hard wearing coating.

PREMIUM YACHT COATINGS

Wet paint system in a wide range of colours and brands.

GLASS

ANNEALED GLASS

Sheet/plate glass, often called "float glass" that has not been heat-strengthened or tempered.

HEAT TREATED

Like tempering, with a slower cooling process. Heat-strengthened glass is approximately twice as strong as annealed glass but breaks into shards.

TEMPERED

Heat treated safety glass, breaks into small 1/8" crumbles.

CHEMICALLY TOUGHENED

Chemically treated plate glass which is agitated to remove all imperfection in glass surfaces meeting or exceeding strengths of tempered glass.

LAMINATED

Two or more pieces of glass bonded together using an .030 or .060 inner layer of polyvinyl butyral (PVB) or ethylene-vinyl acetate (EVA).

Considered to be safety glass due to strength of bonded panel and the fact the panes remain stuck together even after damage. Insulation properties & sound attenuation properties are much greater than standard tempered glass and can reduce UV transmission along with adding tints.

HEATED

Tempered laminated glass with a built-in electrical element to create heat transfer across the glass to eliminate fogging or icing.

INSULATED GLASS UNIT (IGU)

2 or more panes of heat reflective glass separated by an air gap using a desiccant spacer to reduce heat and noise transfer.

ARRIS GROUND (ROUGH ARRIS)

Is achieved using a wet belt sander and removes the sharpness of the glass edges. Primarily applied to ensure the glass is safe to handle.

FLAT GRIND

CNC machine removes all sharp edges and leaving a diamond smooth unpolished edge with a satin, white appearance.

FLAT POLISH

After flat grinding an additional process is completed on our CNC machine.

All edges are polished producing a smooth, gloss finish similar to the glass surface, utilised on glass products where edges are exposed.

VLT - VISIBLE LIGHT TRANSMISSION

Used when discussing tint, VLT is the percentage of the light that passes through glass. The higher the number the more light is passing through and vice versa. Example: VLT 9% gray, will have a dark gray tint only allowing 9% visible light transmission.

ADVANTEC MARINE DEFINITIONS

WINDOWS

CLAMP RING

An internal ring that pinches exterior bulkhead and holds the window in place along with providing an interior beauty trim.

Options are Z-trim, Flat bar ring or L-trim

BOLT-IN

Window frame is installed and secured to bulkhead via mechanical fasteners.

MITERED CORNER

An angled corner formed by cutting and welding each leg of extrusion on a window.

RADIUS CORNER

A rounded corner formed when the window extrusion is bent in our bending machine.

MULLION

Used between panes of glass in a window to add strength. Used particularly in oversized windows.

OSM

Is the outside measurement of main frame.

SPIGOT

The projection of the frame that will fit into the hole or opening.

CLEAR VIEW (OR SIGHT LINE)

Viewing area when looking through window frame.

Or glass view is the glass area or area of the window. The area you will effectively be looking through.

X & O PANELS

Describes the configuration of sliding pane. The "X" pane is the active panel, "O" pane is the inactive/fixed pane. Also described as active or inactive panes.

ALASKAN LEG

Raised leg on lower frame edge to prevent ingress of water in harsh environments.

A damn built to the lower frame to prevent the ingress of water where a window will be used in particularly harsh environments.

BOTTOM VENT

A fixed/vent window with a hinged opening on bottom section.

TOP VENT

A fixed/vent window with a hinged opening on top section

TOP HINGED

Opening window with hinges across top where entire vent portion hinges open.

1/2 DROP

A sliding window where the top half of the window is the active (X) panel and the bottom half is the inactive (O) panel. Opening from top to bottom.

FULL DROP

A sliding window where the entire pane slides vertically down to open.

REAR SLIDING (RS)

A sliding window where the rear/aft pane is the active (X) panel.

SERVICE & SUPPORT

SERVICE & SUPPORT

AT ADVANTEC MARINE, WE SUPPORT WHAT WE SELL!

We're more than a manufacturer of innovative marine products. We offer a range of technical support services for our products post-purchase. See below for some of our service offerings.

MAINTENANCE & REPAIRS:

- Davits/Cranes
- Doors - Automatic & Manual Doors
- Windows & Glass
- Hatches
- Onsite Diagnostics
- Machine Shop Services

INSPECTIONS & CONSULTING:

- OEM Inspections
- Installation Support & Oversight
- Weather & Watertight Testing
- Product Commissioning & Testing
- *Extended Warranty Qualification
- 24/7 Remote Technical Support



ADVANTEC ADVANTAGE



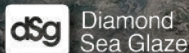
3 YEAR
HASSLE-FREE
WARRANTY

WE ARE PASSIONATE ABOUT DELIVERING

RELIABLE *SOLUTIONS*
SUPERIOR *QUALITY*
WORLD-CLASS *SUPPORT*



Proudly part of the **Advantec** family of brands



Advantec Manufacturing Canada
43676 Progress Way, Chilliwack, BC,
V2R 0C3, Canada

Phone: 1.800.770.0455
Email: info@advantecglobal.com

Advantec Manufacturing USA
28336 Hunter Creek Rd., Gold Beach,
OR, 97444, USA