

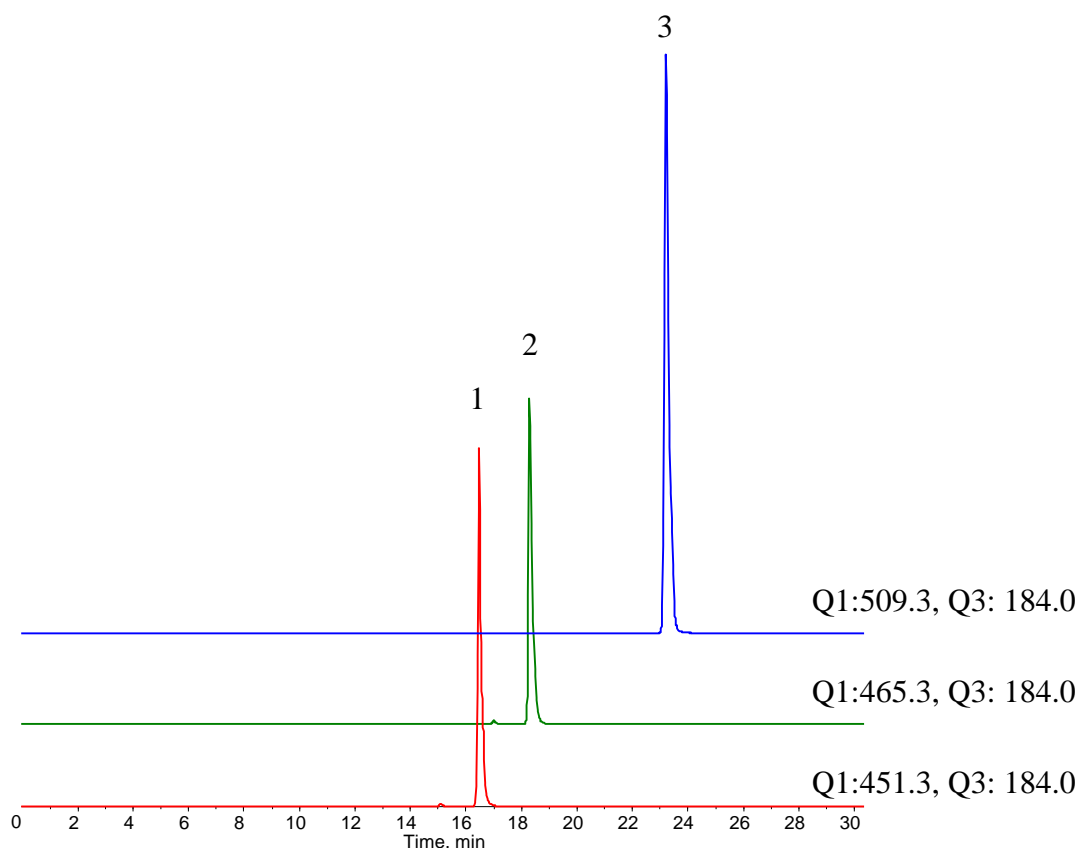
InertSearch for LC

Inertsil Applications

Analysis of Phospholipids

Data No. LL033-0000

The chromatograms were provided by Masamitsu Maekawa and Nariyasu Mano,
Department of Pharmaceutical Sciences, Tohoku University Hospital,
1-1 Seiryō-machi, Aoba-ku, Sendai, Miyagi, 980-8574, Japan



Conditions

Column : InertSustain C18
(2 μ m, 150 x 2.1 mm I.D., Metal-free hardware)
Column Cat. No. : 5020-87402
Eluent : A) CH₃CN/Acetone/HCOOH = 50/50/0.1, v/v/v
B) 0.1% HCOOH in H₂O

Time(min)	A (vol%)	B (vol%)
0	25	75
30	70	30

Flow rate : 0.4 mL/min
Col. Temp. : 40 °C
Detection : MS/MS (ESI, Positive, MRM)
Injection Vol. : 1 μ L
Sample : Standard (1000 ng/mL each)

Analyte:

1. Lysosphingomyelin (d17:1)
(Nor-Sphingosylphosphorylcholine)
2. Lysosphingomyelin (d18:1)
(Sphingosylphosphorylcholine)
3. N-Palmitoyl-O-phosphocholine-serine