



ABBA ARCHITECTS

## ABOUT US

ABBA MİMARLIK was founded in 2012 by Arzu ŞAHİN and Burcu ALTAY DOĞAN.

Since our establishment, we have served in many projects on interior design, implementation and consultancy and we continue our customer satisfaction focused work whilst expanding our service area.

# CONTENTS

AgeSA Pension and Life Insurance HQ	4
EnerjiSA Üretim HQ	14
Apsiyon Management Office	26
Apsiyon R&D Office	30
Mikro Software Office	34
Mobven by Payten 3rd Office	42
Payten Office	46
Apsiyon Office	52
EnerjiSA Üretim Bandırma Power Plant Office & GuardHouse	56
EnerjiSA Üretim Bandırma "Turna" Multifunctional Leisure Center	60
EnerjiSA Üretim Kozan Guesthouse	62
EnerjiSA Üretim "Stone Office"	70
EnerjiSA Üretim Arkun Hidroelectric Power Plant Leisure Center	74
EnerjiSA Üretim Tufanbeyli Power Plant Office	78
EnerjiSA Üretim Tufanbeyli Power Plant - Leisure Center	80
EnerjiSA Üretim Tufanbeyli Power Plant - "Garden"	82



AgeSA Pension  
and  
Life Insurance HQ

Architecture  
and  
Interior Design  
Project

Location: Kozyatağı,  
İstanbul, Turkey

Project Area:  
1800 m<sup>2</sup> Indoor  
area,  
350 m<sup>2</sup> Outdoor  
area

Year: 2021



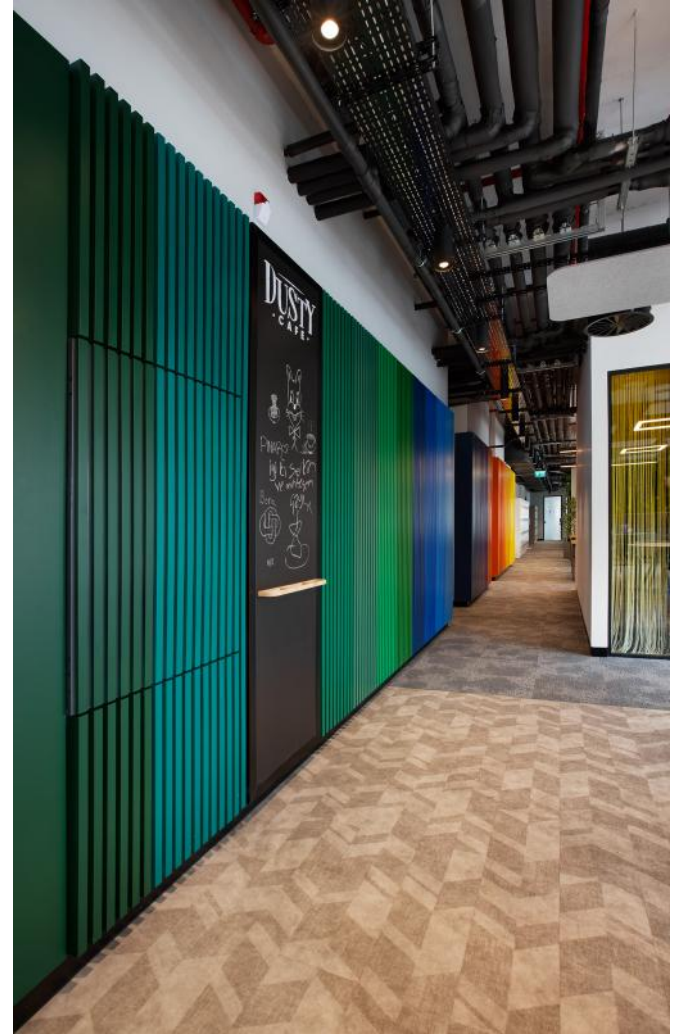
























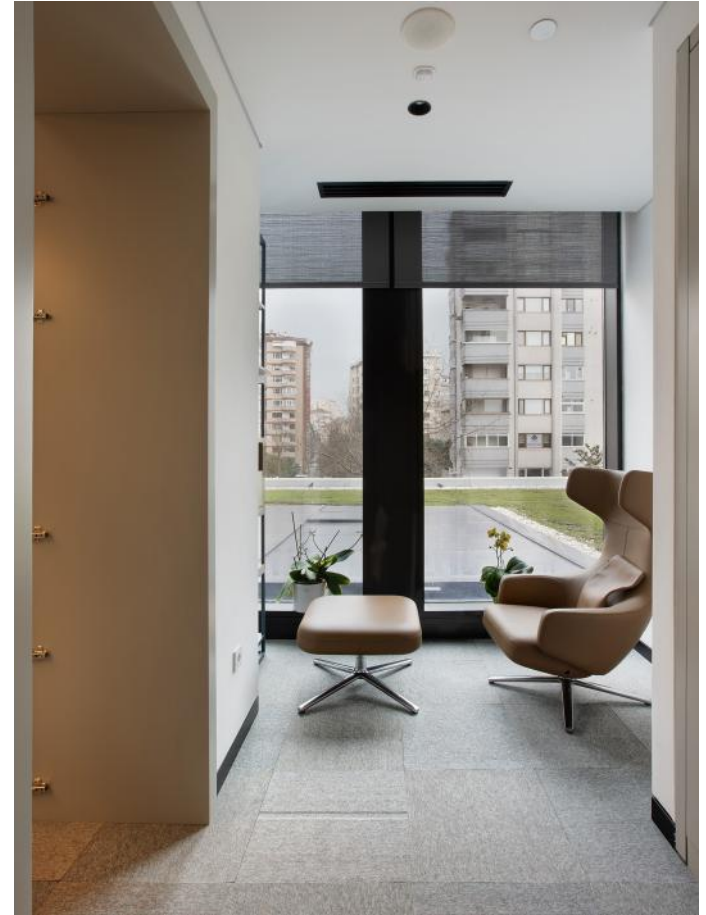
















## EnerjiSA Üretim HQ

Architecture  
and  
Interior Design  
Project

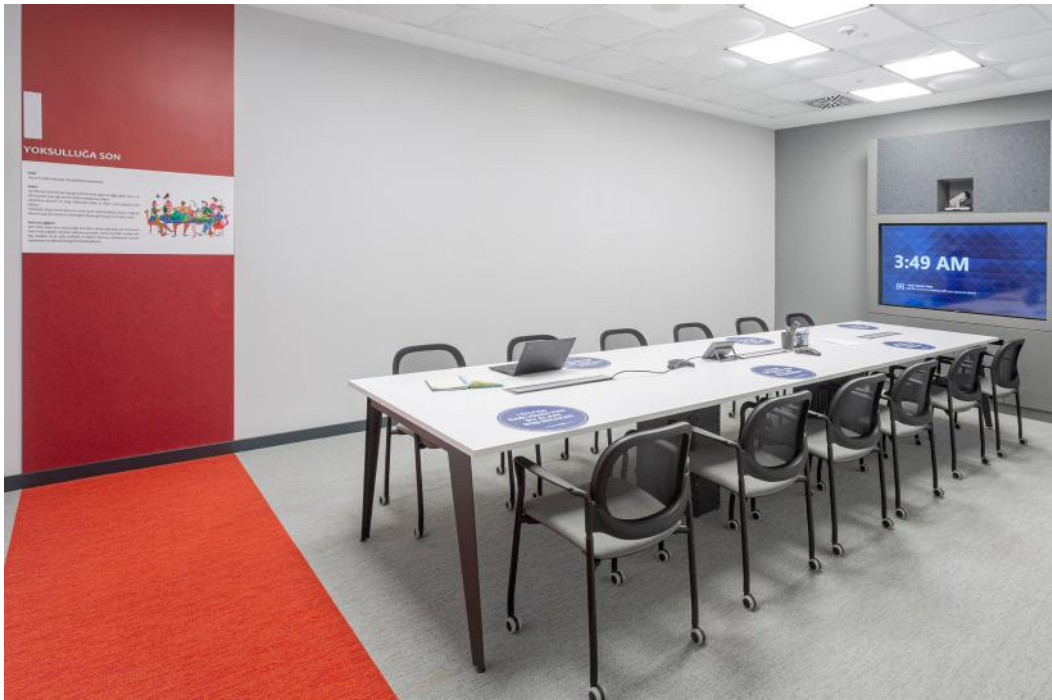
Location: Ataşehir,  
İstanbul, Turkey

Project Area:  
Indoor area :  
5500 m<sup>2</sup>,  
Outdoor area:  
200 m<sup>2</sup>

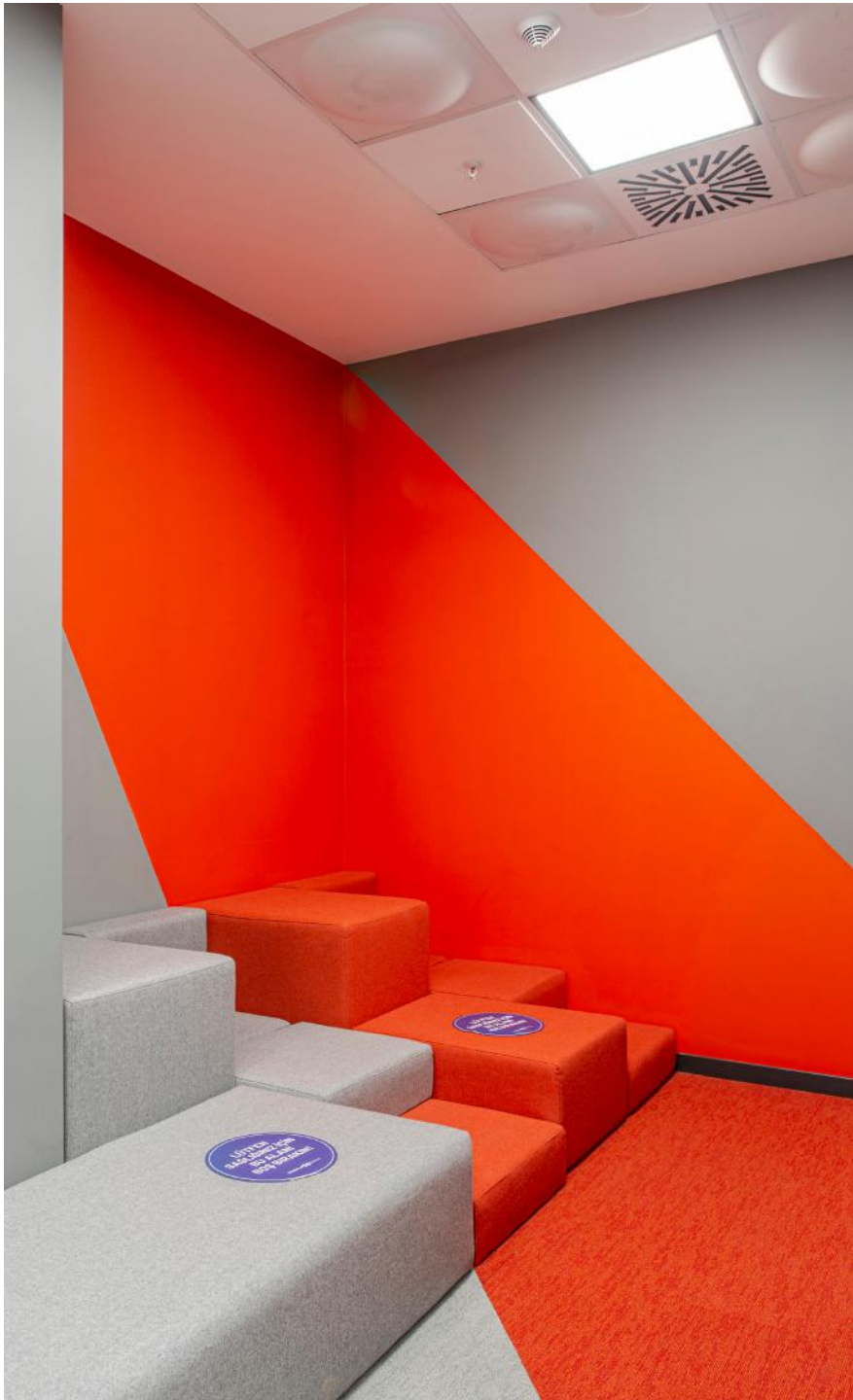
Year: 2020



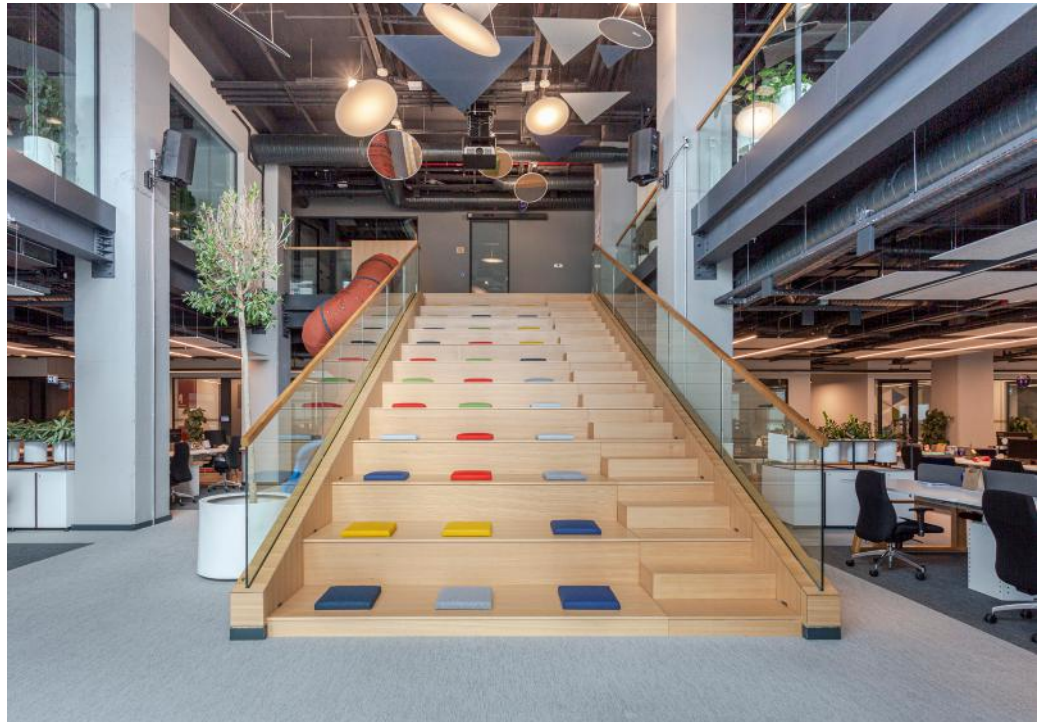












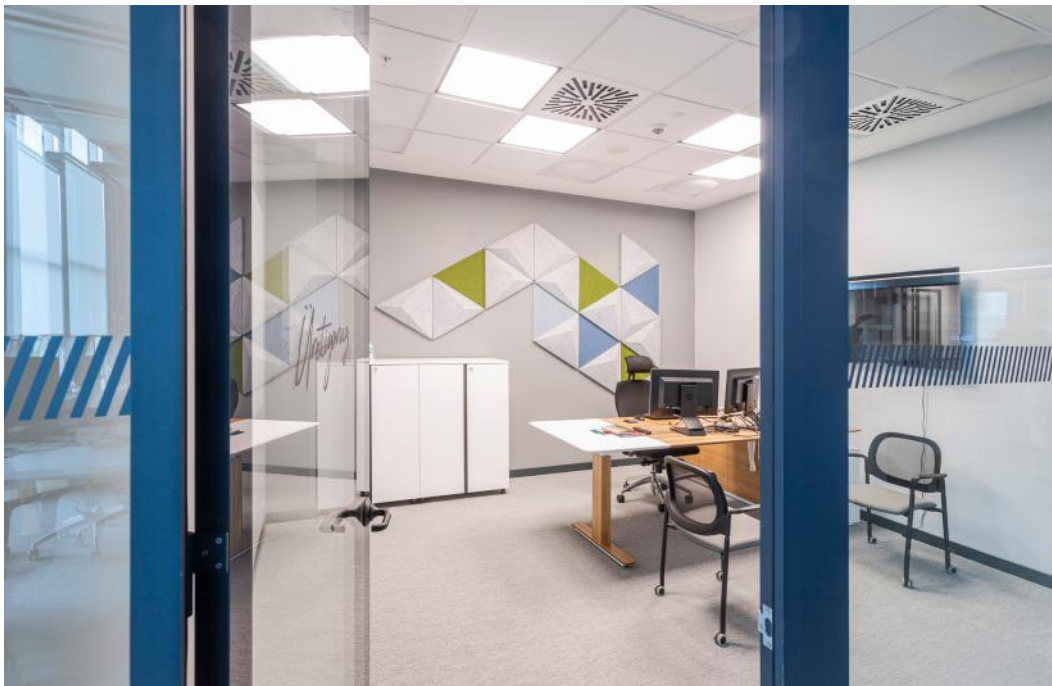
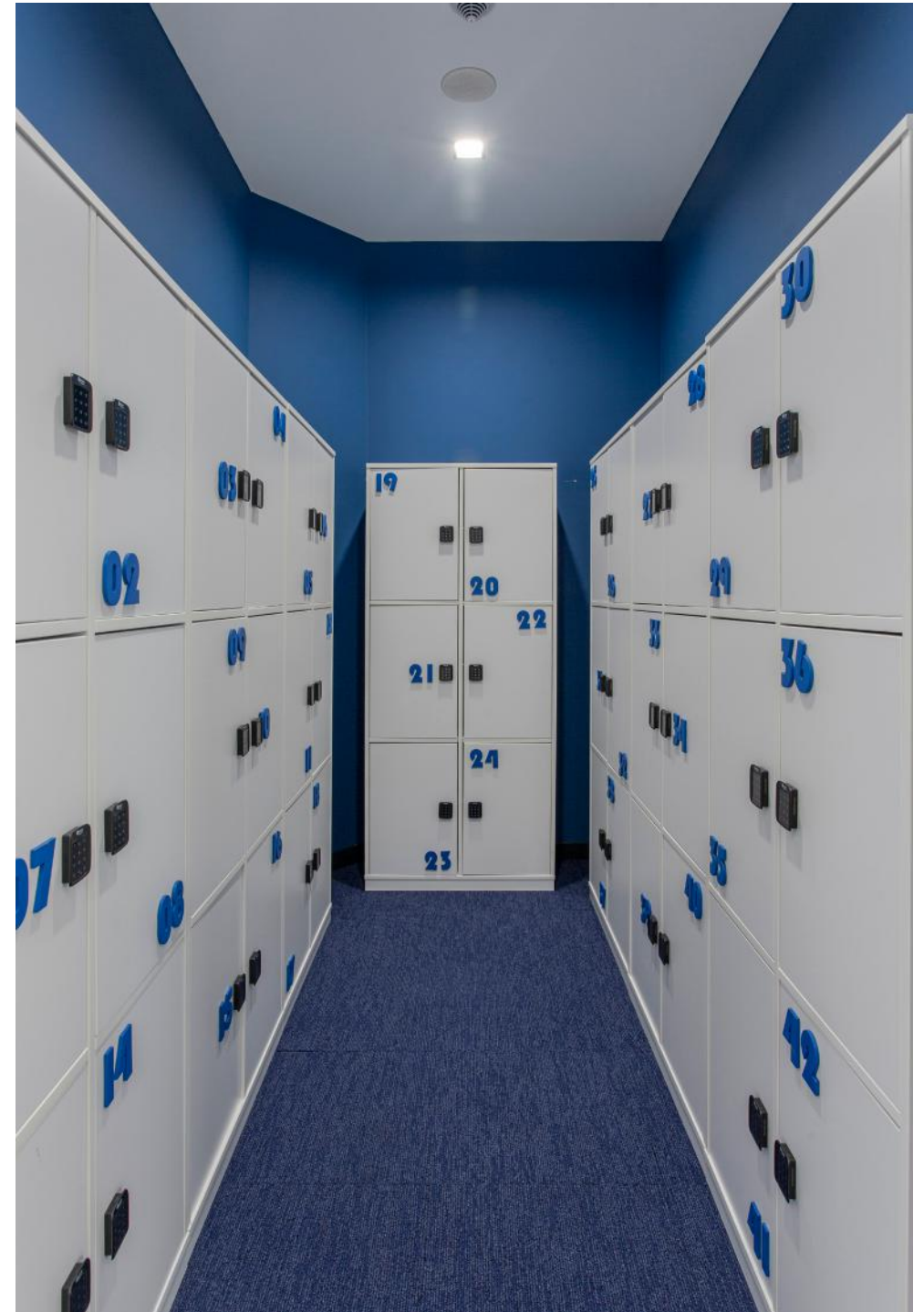




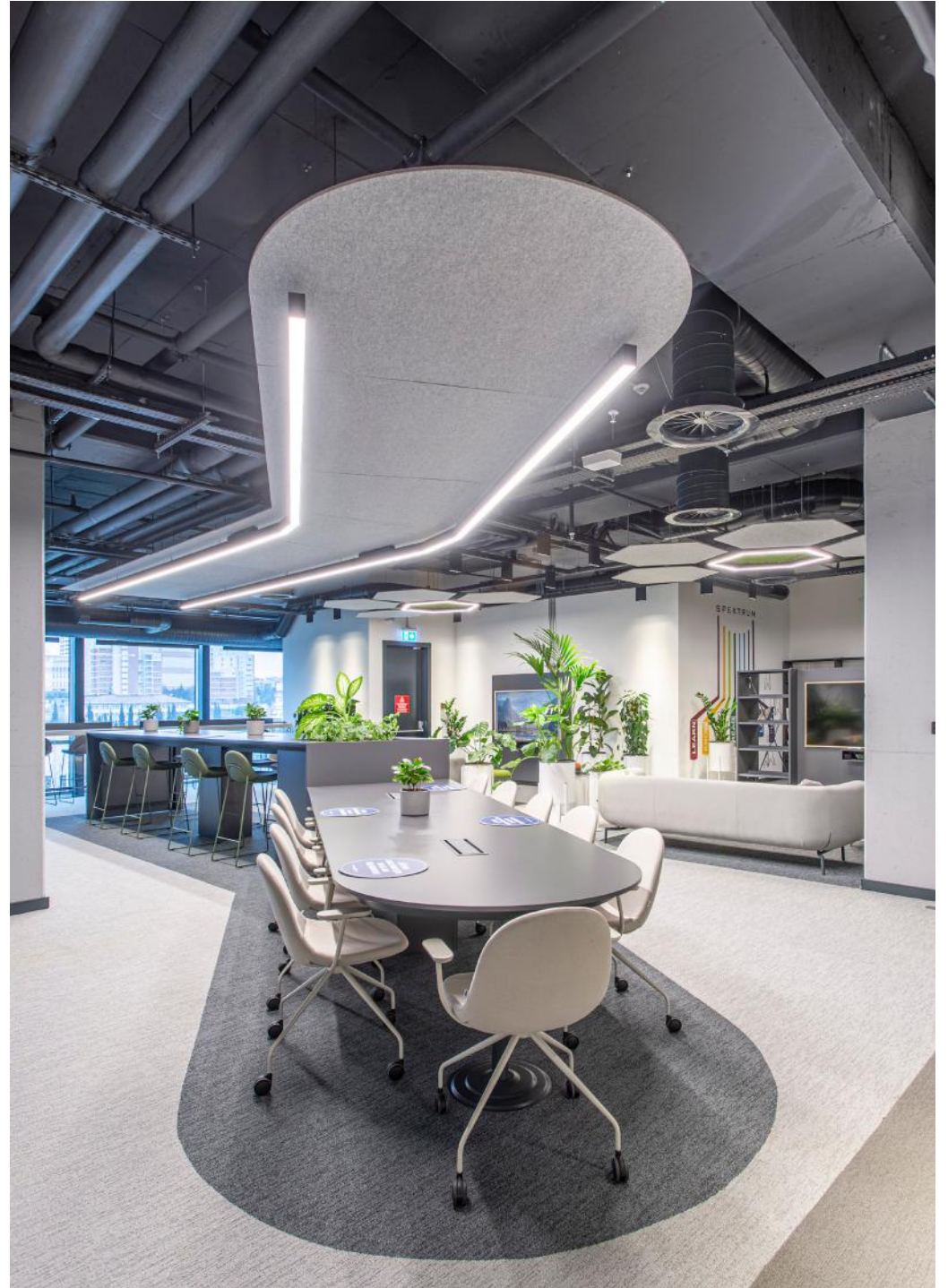








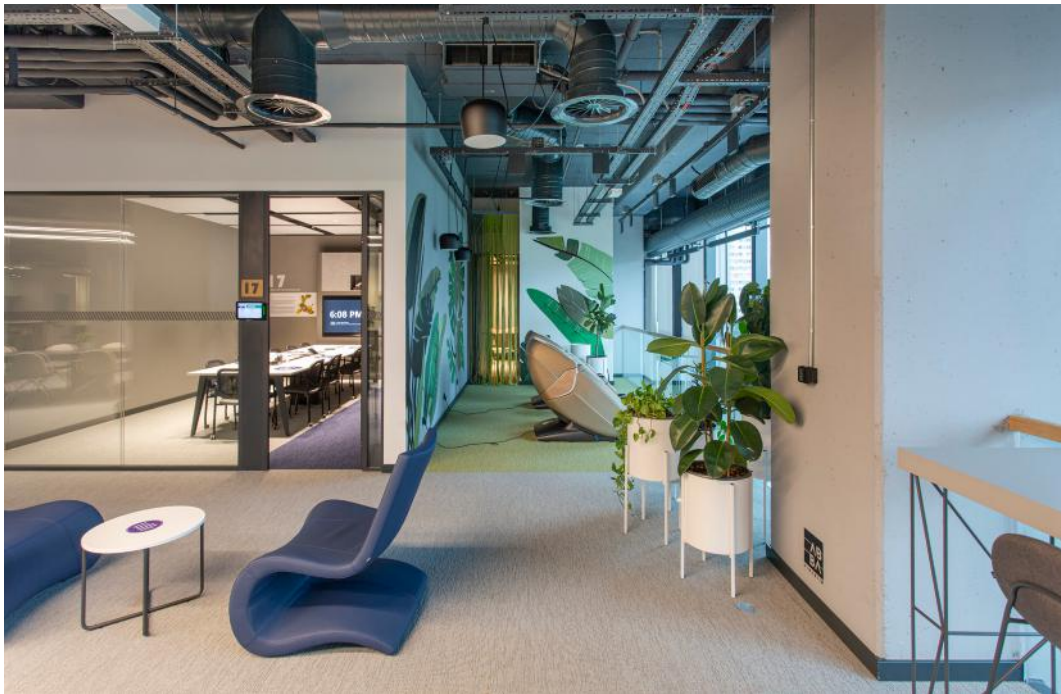








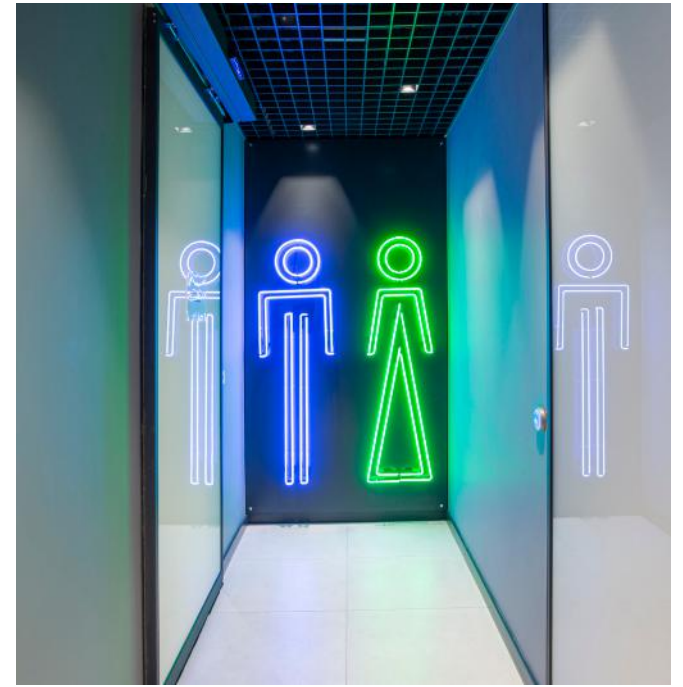
















**Apsiyon  
Management  
Office**

Architecture  
and  
Interior Design  
Project

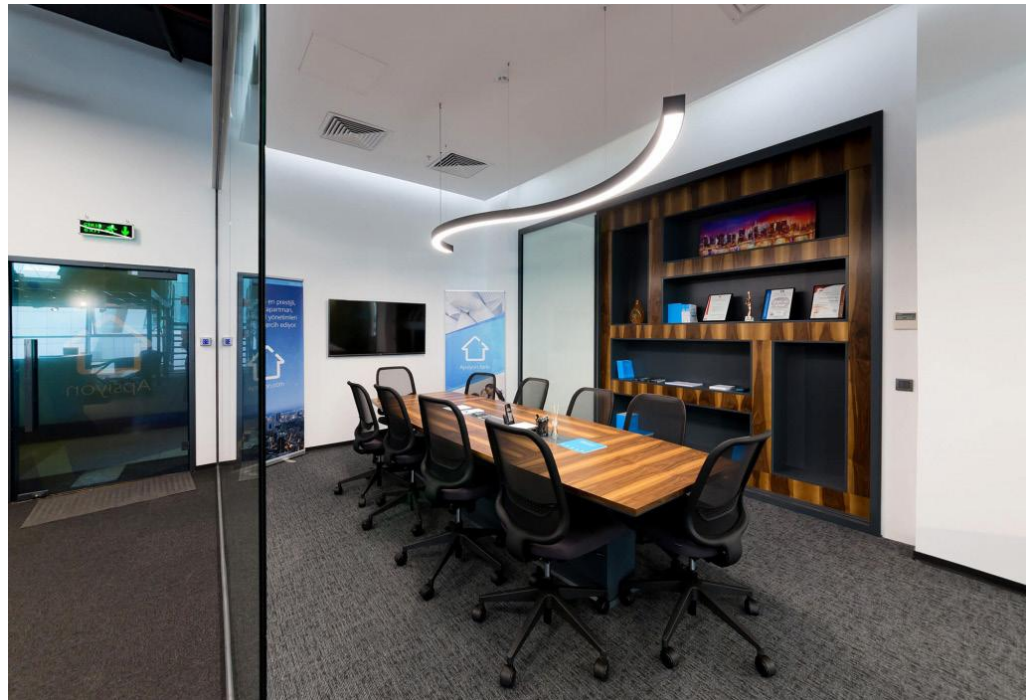
Location: Maltepe  
Istanbul, Turkey

Project Area:  
400 m<sup>2</sup>

Year: 2011



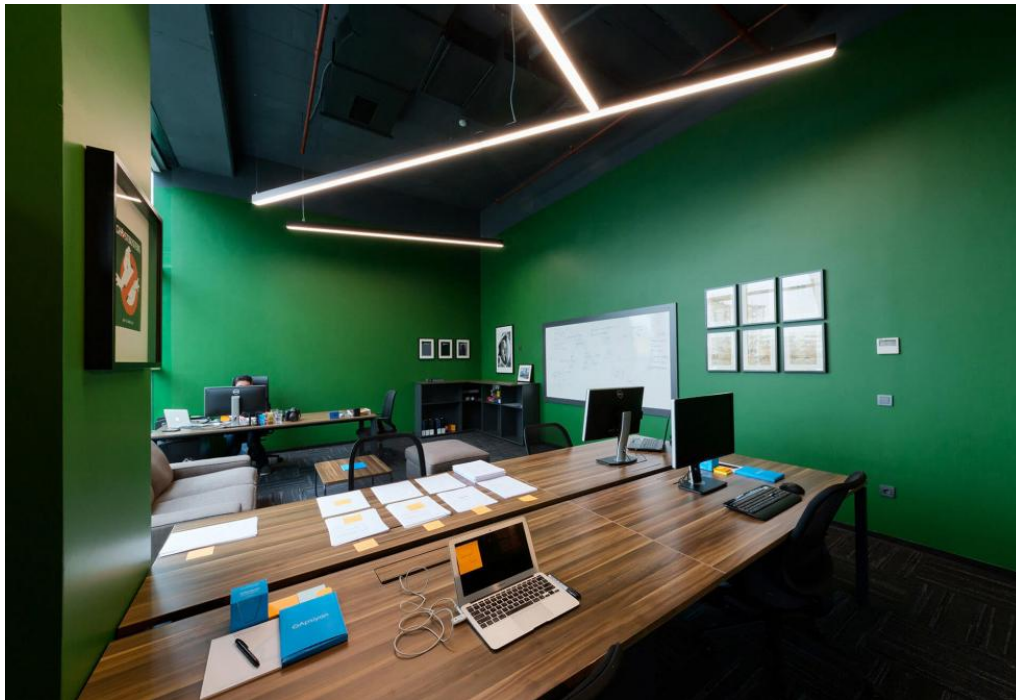
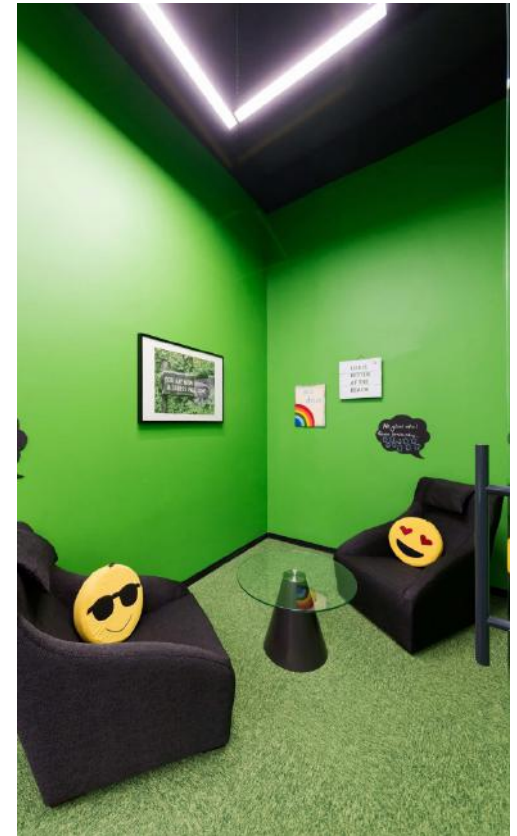
















**Apsiyon  
R & D Office**

Architecture  
and  
Interior Design  
Project

Location: Maltepe  
Istanbul, Turkey

Project Area:  
350 m<sup>2</sup>

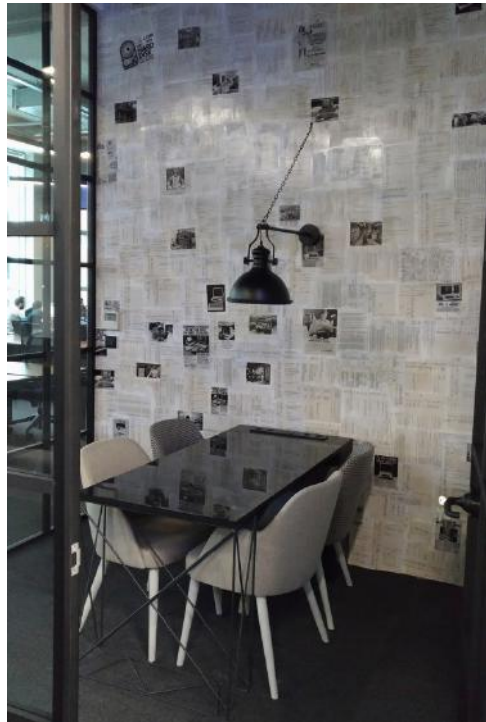
Year: 2017



















**Mikro  
Software  
Office**

Architecture  
and  
Interior Design  
Project

Location: Maslak,  
Istanbul, Turkey

Project Area:  
850 m<sup>2</sup>  
Indoor Area:  
700 m<sup>2</sup>  
Outdoor Area:  
150 m<sup>2</sup>

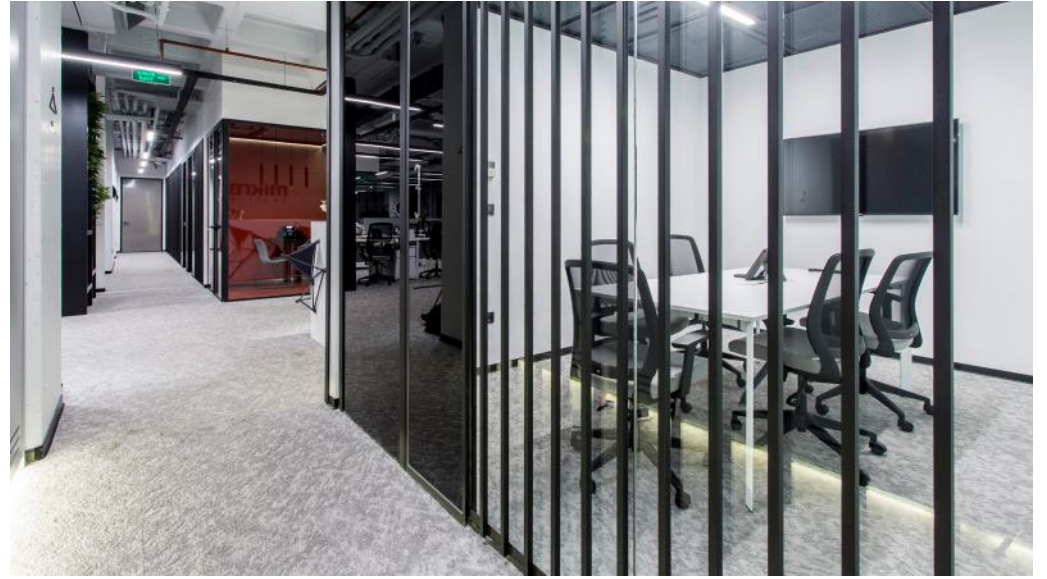
Year: 2018







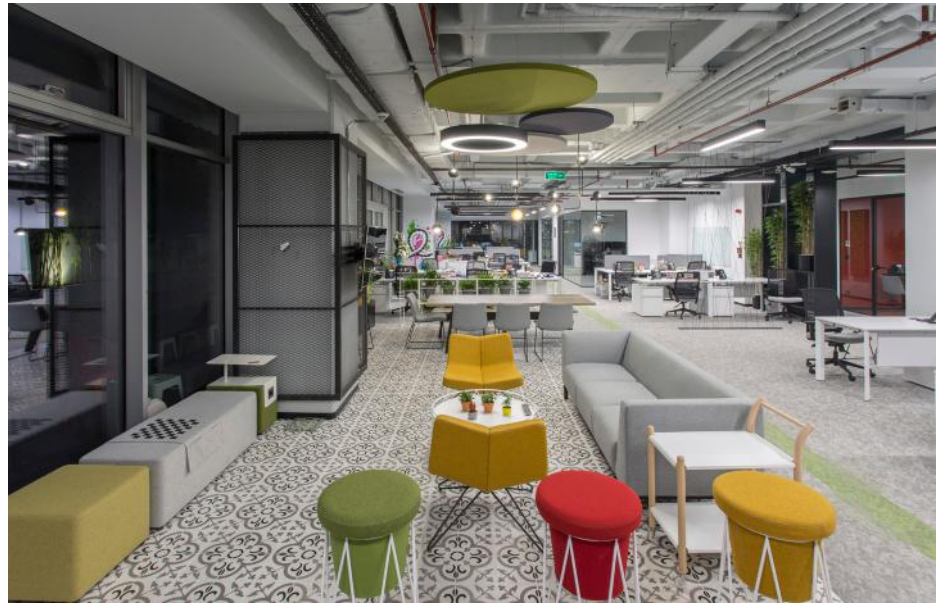




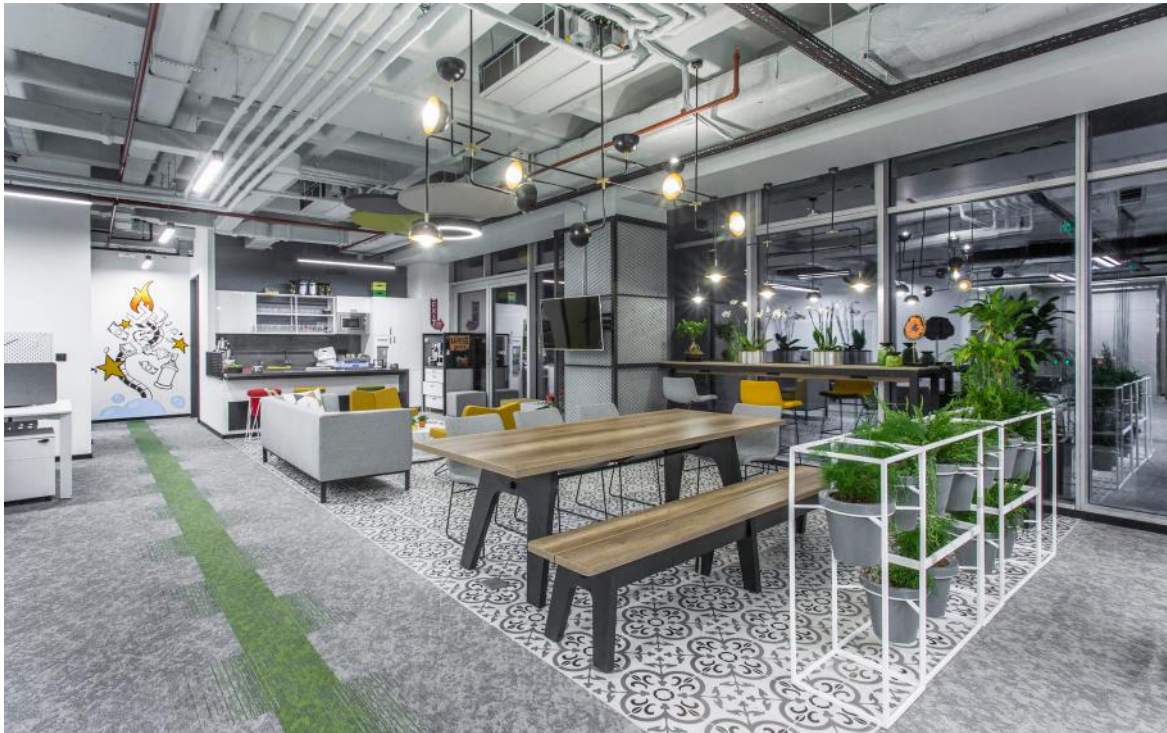
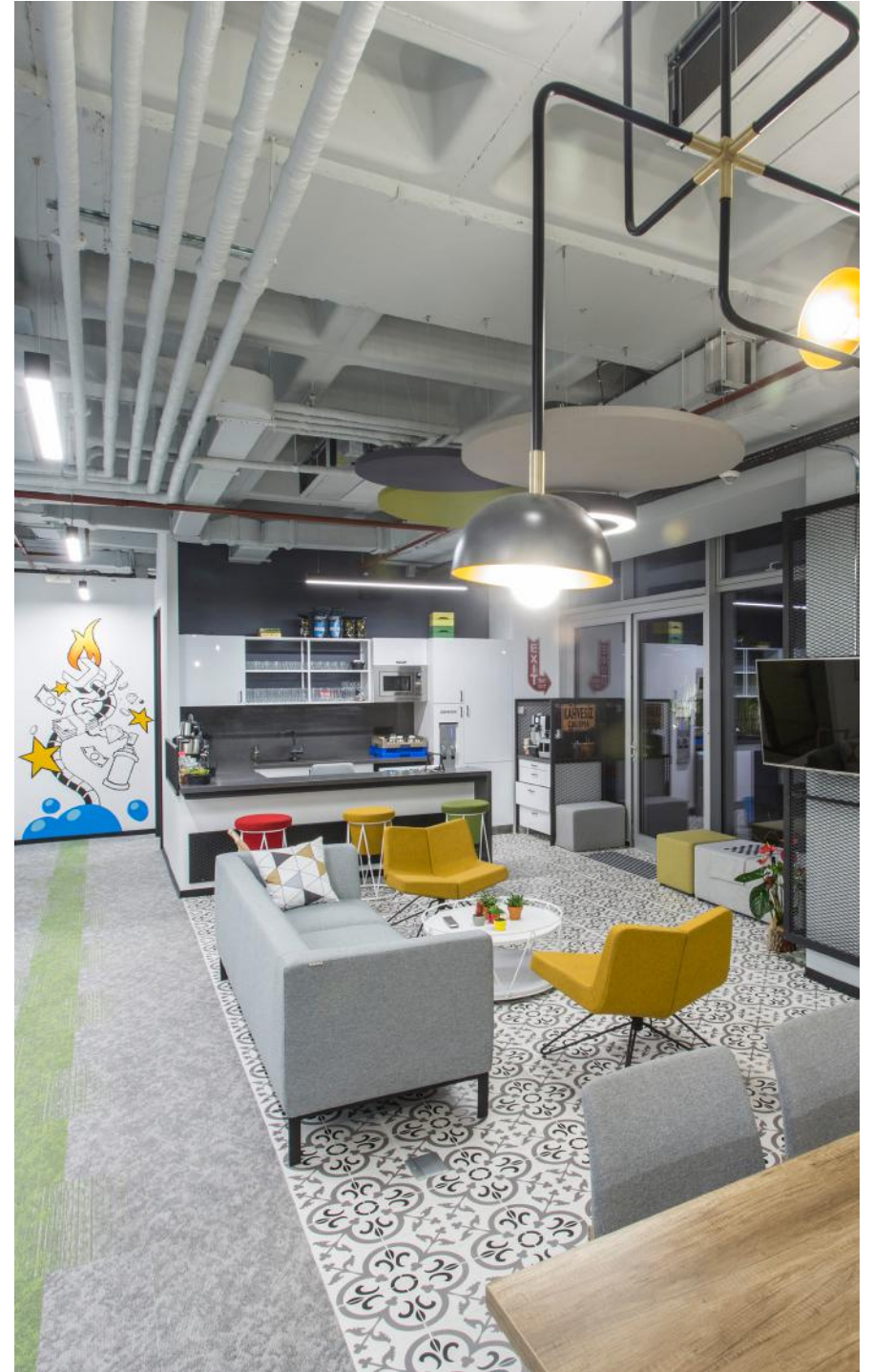




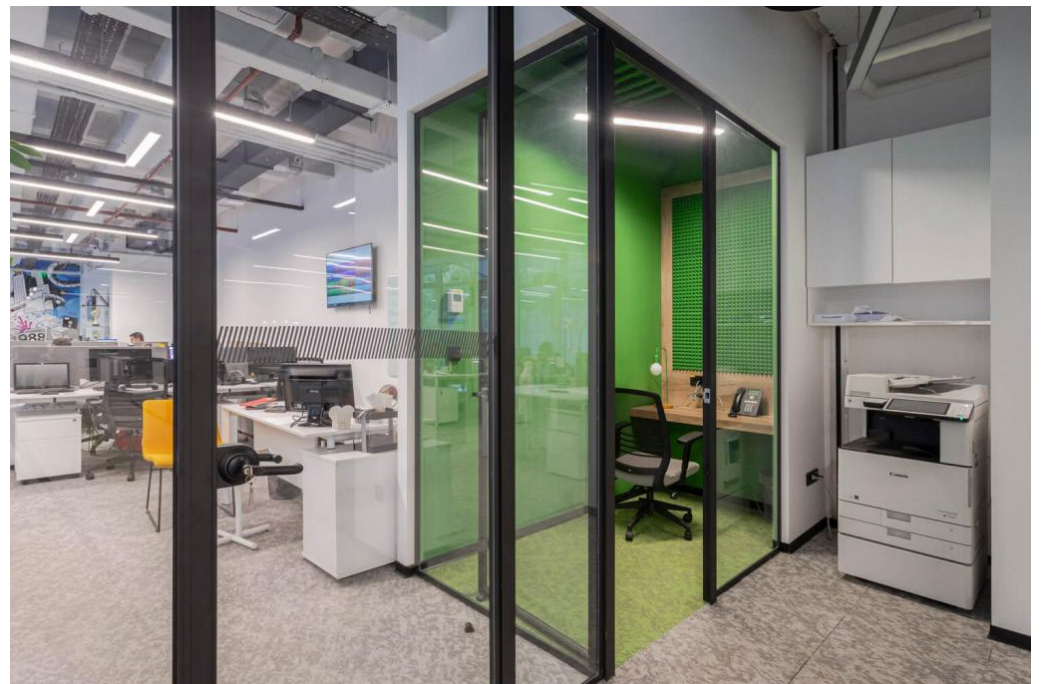
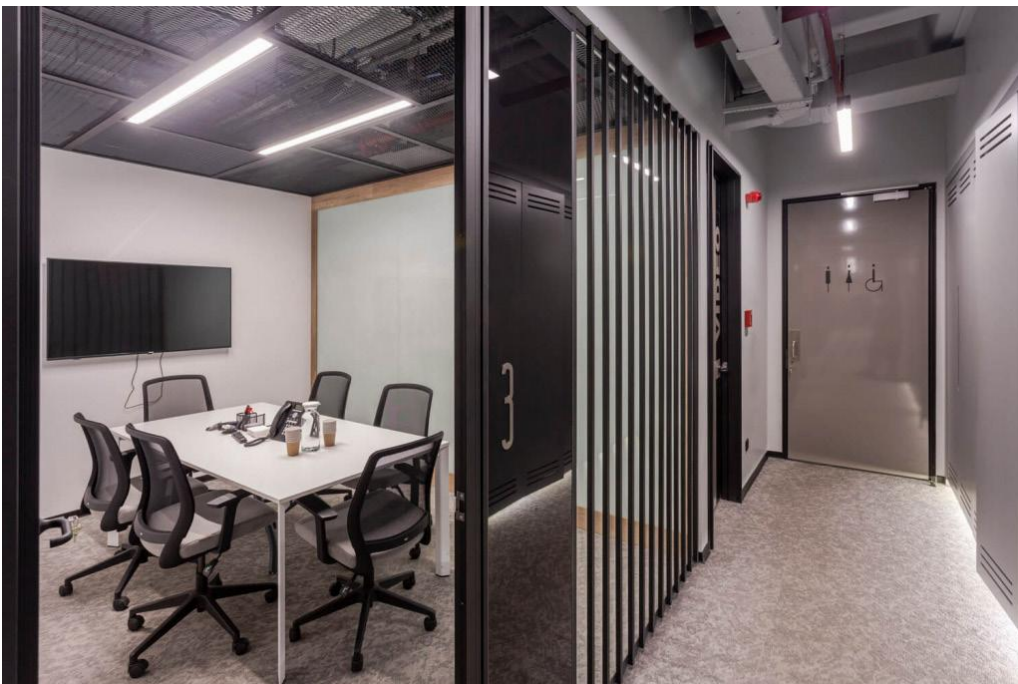
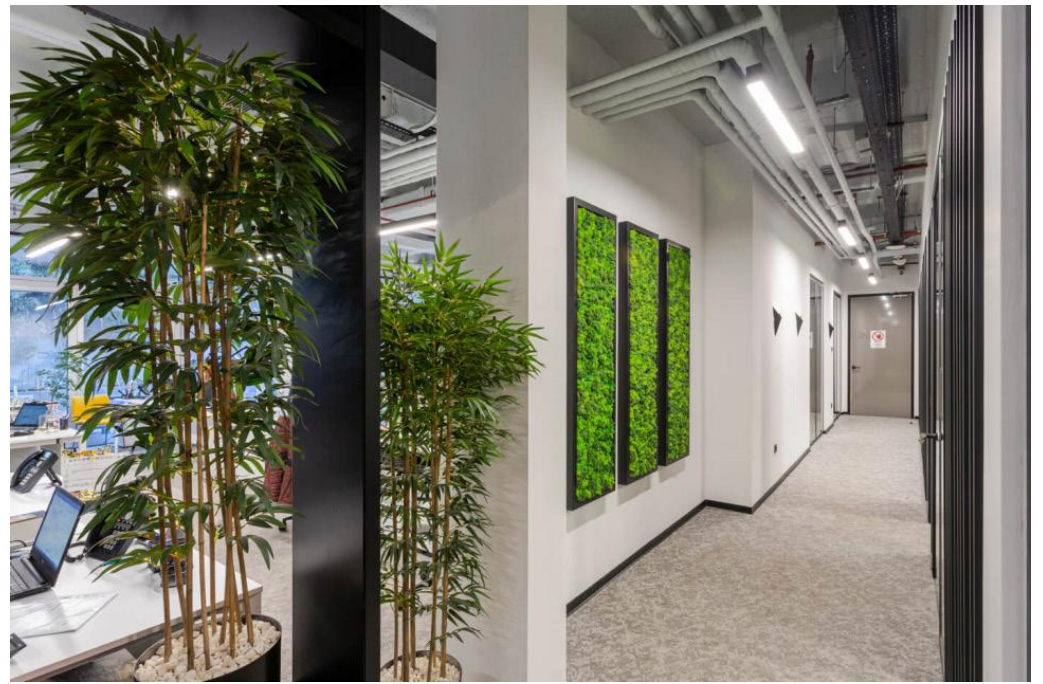




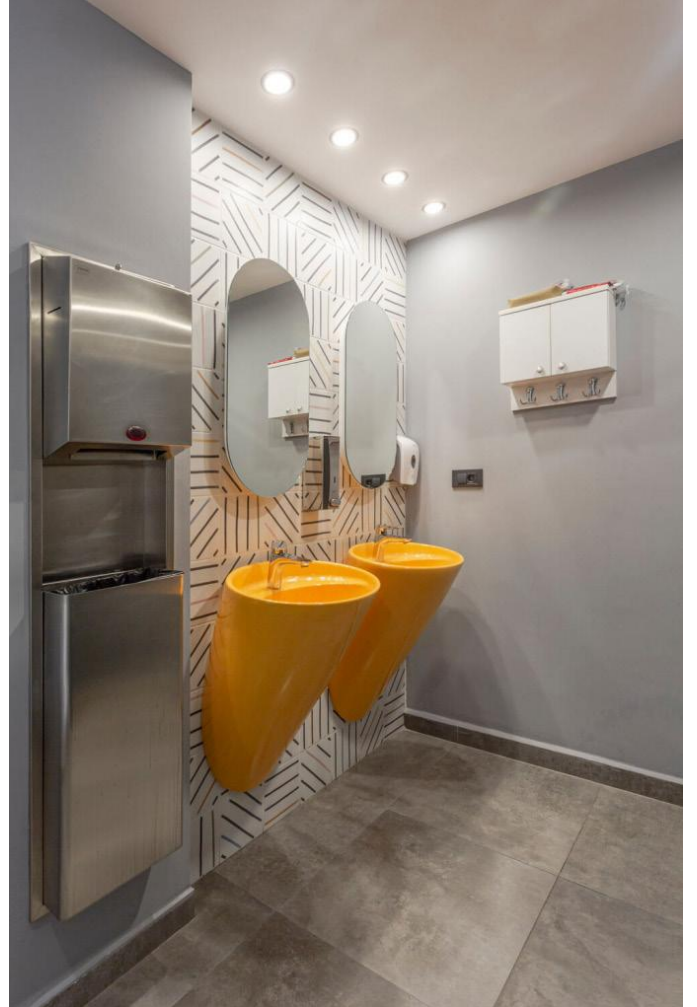
















**MOBVEN**  
by Payten  
3rd Office

Architecture  
and  
Interior Design  
Project

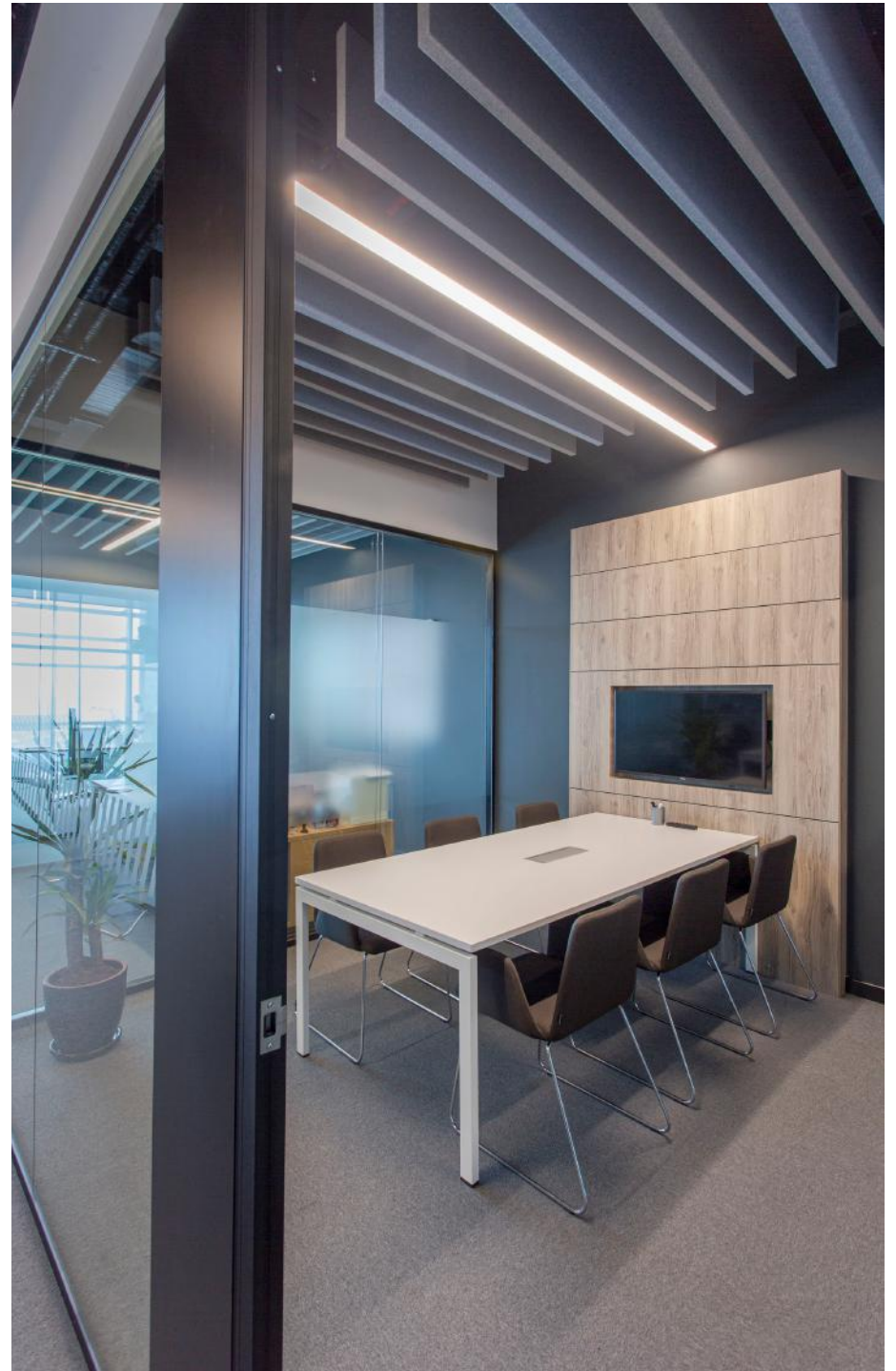
Location:  
Istanbul, Turkey

Project (Indoor)  
Area: 210 m<sup>2</sup>

Year: 2019



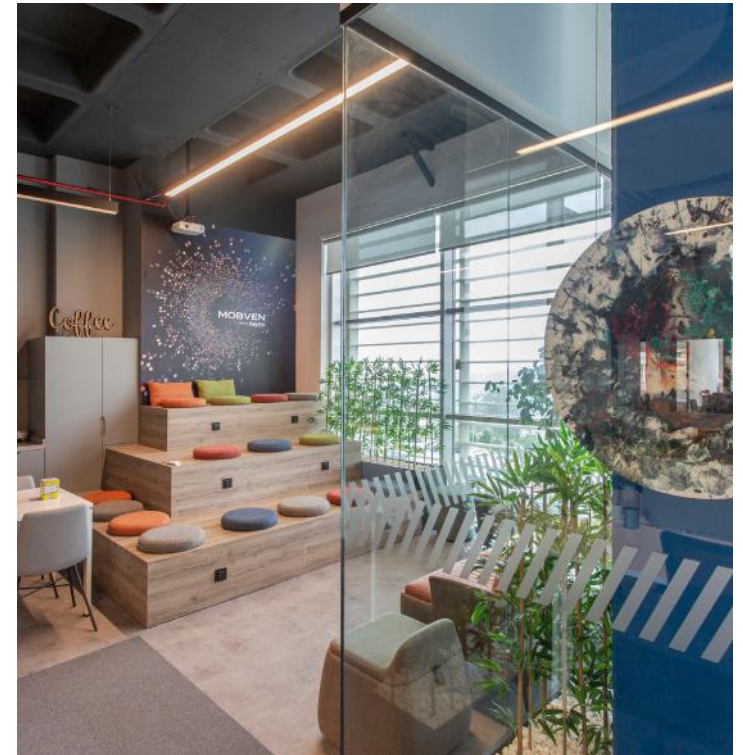
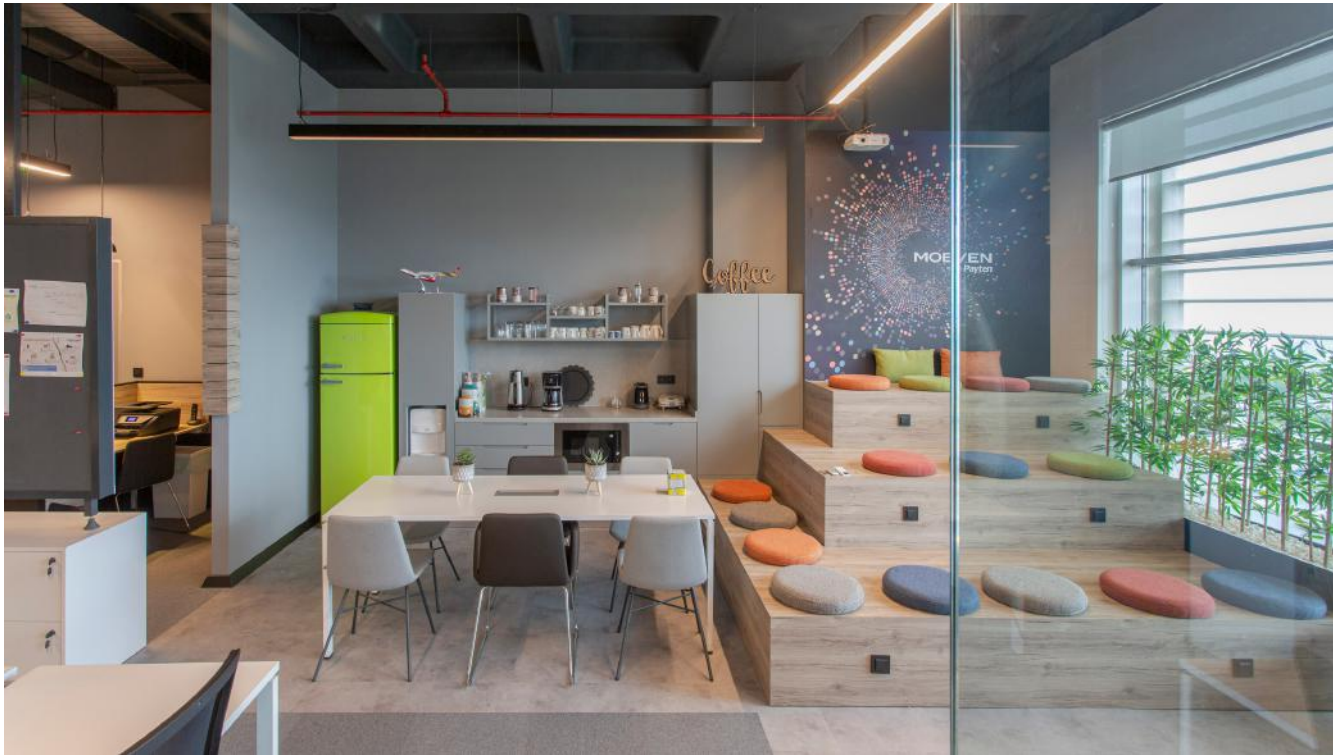
















## PAYTEN OFFICE

Architecture  
and  
Interior Design  
Project

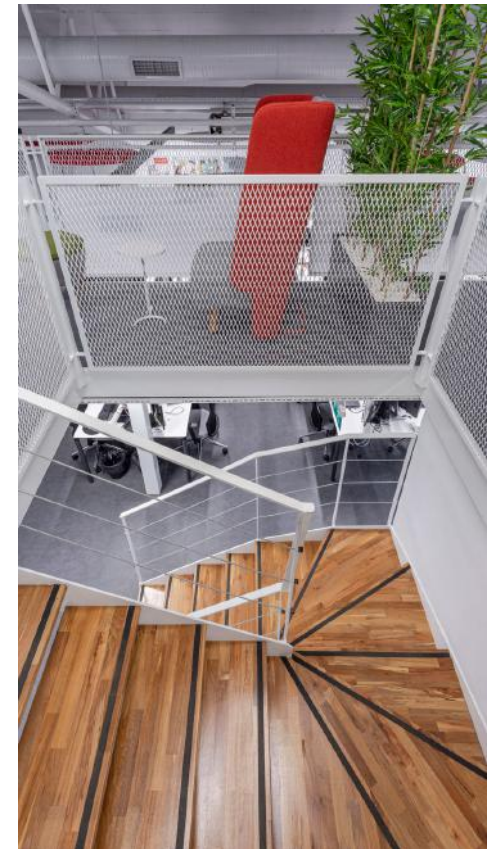
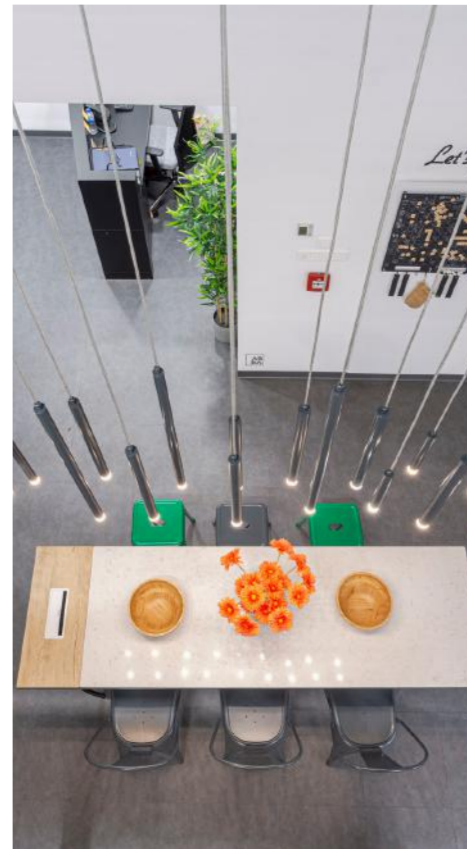
Location: ITU Ari  
Teknokent, Sarıyer,  
İstanbul, Turkey

Project (Indoor)  
Area: 450 m<sup>2</sup>

Year: 2019



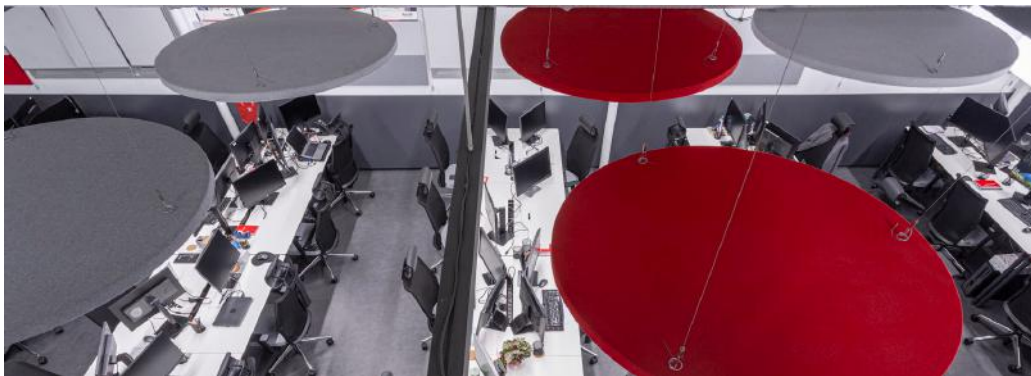








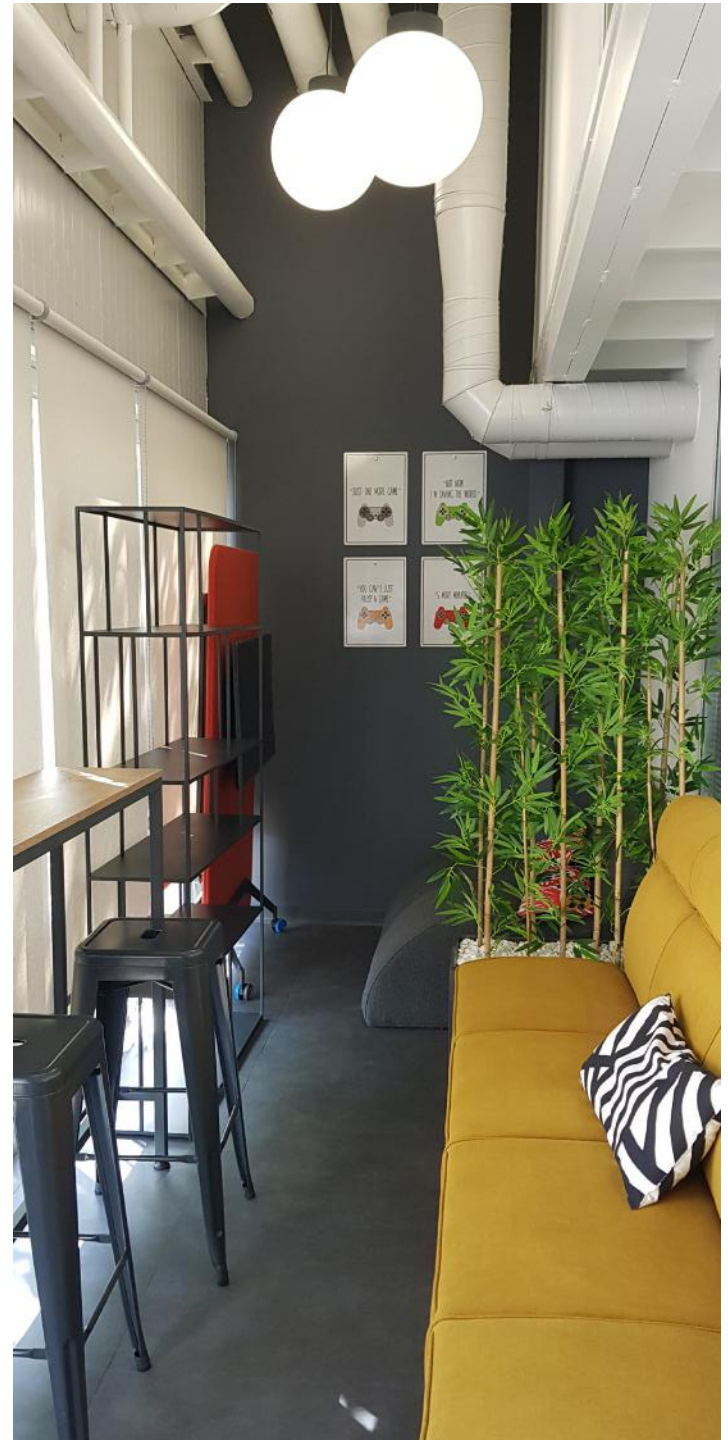
















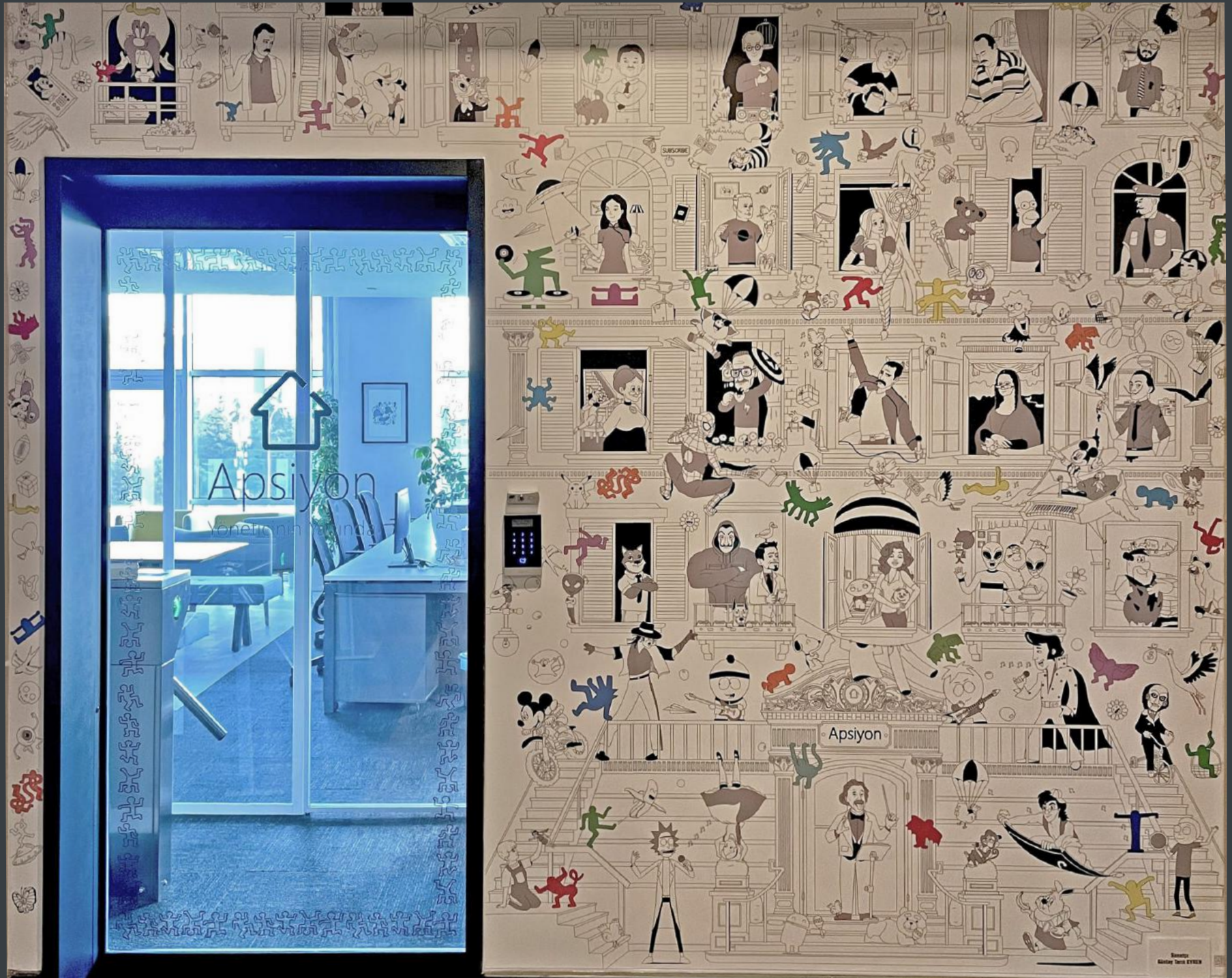
## APSIYON OFFICE

Architecture  
and  
Interior Design  
Project

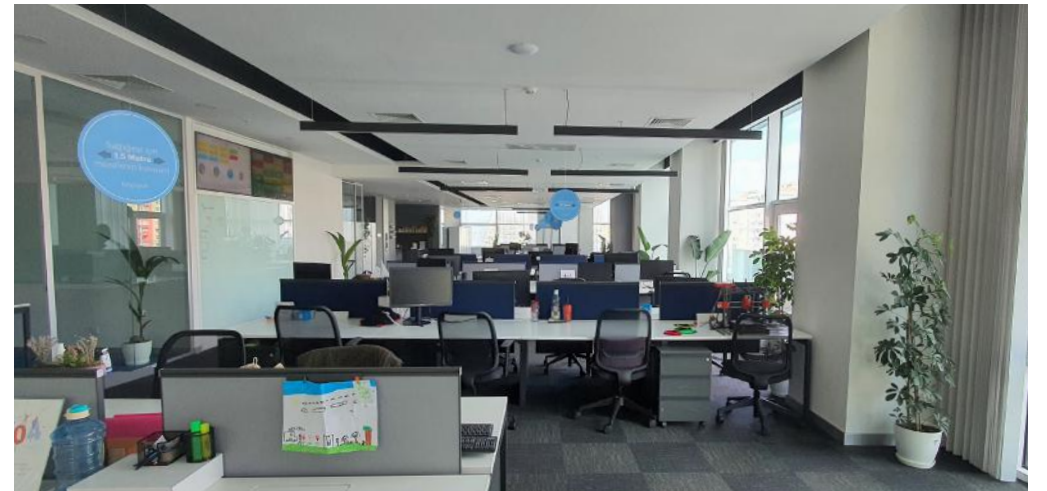
Location: Maltepe,  
Istanbul, Turkey

Project Area:  
450 m<sup>2</sup>  
Indoor Area:  
350 m<sup>2</sup>  
Outdoor Area:  
100 m<sup>2</sup>

Year: 2020



















**EnerjiSA Üretim  
Bandırma  
Power Plant Office  
& Guardhouse**

Architecture  
and  
Interior Design  
Project

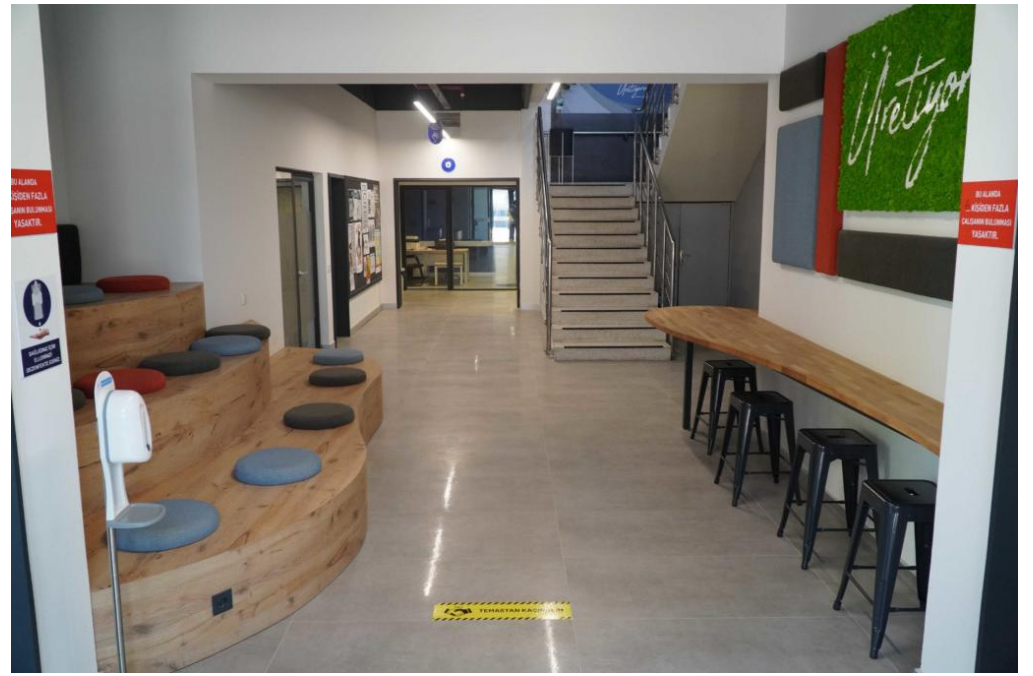
Location: Bandırma  
Balıkesir, Turkey

Project Area:  
395 m<sup>2</sup>

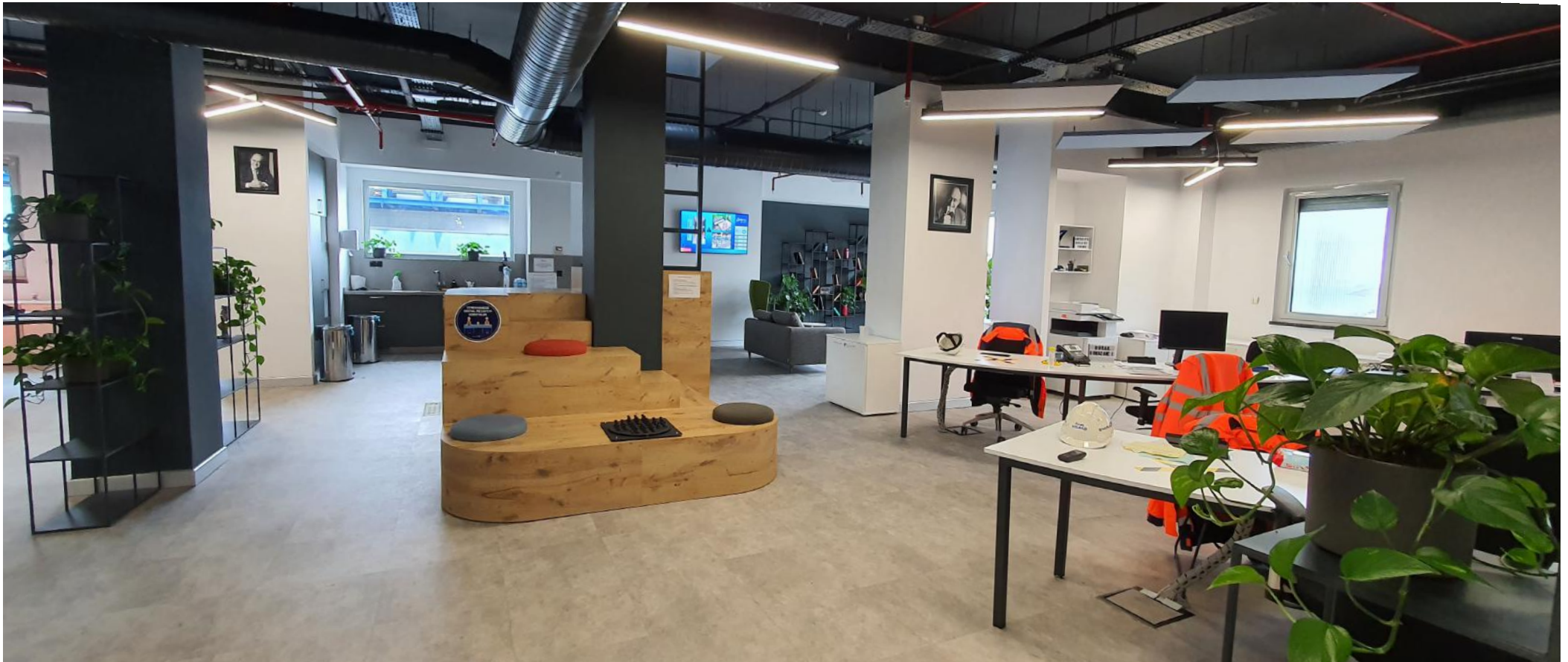
Year: 2019



















EnerjiSA Üretim  
Bandırma  
Power Plant

“Turna”  
Multifunctional  
Leisure Center

Architecture  
Construction and  
Interior Design  
Project

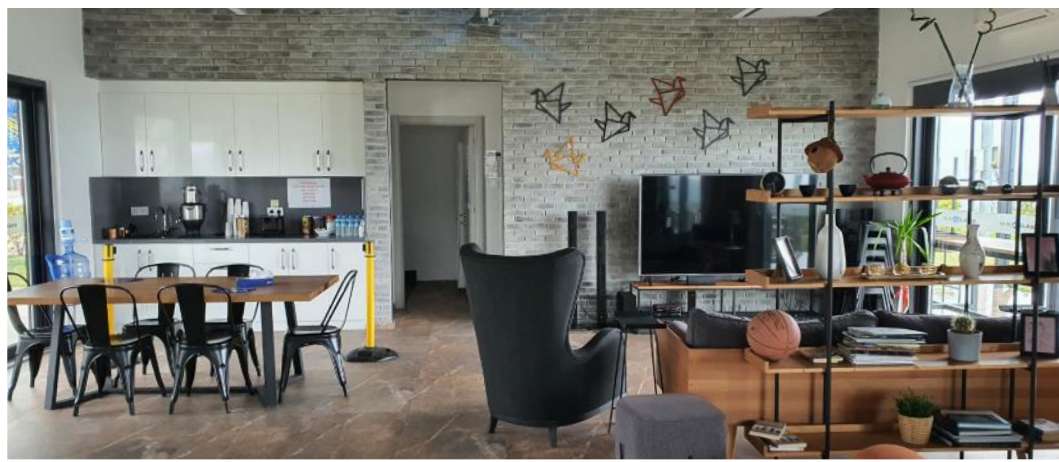
Location: Bandırma  
Balıkesir, Turkey

Project Area:  
560 m<sup>2</sup>  
Indoor Area:  
160 m<sup>2</sup>  
Outdoor Area:  
400 m<sup>2</sup>

Year: 2019











**EnerjiSA Üretim  
Kozan  
Guest House**

Architecture,  
Construction and  
Interior Design  
Project

Location: Kozan,  
Adana, Turkey

Project Area:  
2470 m<sup>2</sup>  
Indoor Area:  
2140 m<sup>2</sup>  
Outdoor Area:  
330 m<sup>2</sup>

Year: 2022



































**EnerjiSA Üretim  
Assos  
“Stone Office”**

Architecture  
Landscape and  
Interior Design  
Project

Location: Assos,  
Çanakkale,  
Turkey

Project Area:  
1350 m<sup>2</sup>  
Indoor Area:  
350 m<sup>2</sup>  
Outdoor Area:  
1000 m<sup>2</sup>

Year: 2022



















**EnerjiSA Üretim  
Arkun  
Hidroelectric  
Power Plant  
“Lotus”  
Leisure Center**

Architecture  
and  
Interior Design  
Project

Location: Yusufeli,  
Artvin, Turkey

Project Area:  
200 m<sup>2</sup>  
Indoor Area:  
150 m<sup>2</sup>  
Outdoor Area:  
50 m<sup>2</sup>

Year: 2019



















**EnerjiSA Üretim  
Tufanbeyli  
Power Plant  
Office**

Architecture  
and  
Interior Design  
Project

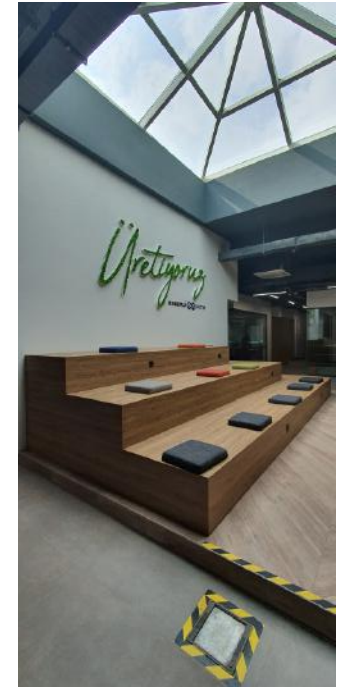
Location: Tufanbeyli  
Adana, Turkey

Project Area:  
2100 m<sup>2</sup>

Year: 2019











**EnerjiSA Üretim  
Tufanbeyli  
Power Plant  
“Terrace Cafe”  
Leisure Center**

Architecture  
and  
Interior Design  
Project

Location: Tufanbeyli  
Adana, Turkey

Project Area:  
900 m<sup>2</sup>

Year: 2020











**EnerjiSA Üretim  
Tufanbeyli  
Power Plant  
Garden**

Architecture  
and  
Interior Design  
Project

Location: Tufanbeyli  
Adana, Turkey

Project Area:  
300 m<sup>2</sup>

Year: 2019













For more information:



ABBA Mimarlık



abbamimarlik



abbamimarlik.com



**AB  
BA**