

# AVON

CAMPAIGN 23

**COMFY  
COZY**  
are we!

NEW! LIMITED EDITION

A woman with short hair, wearing a white ribbed sweater and purple slippers, is sitting cross-legged on a white background. She is smiling broadly and holding a green gift box with a white ribbon bow on top of her head with both hands. The gift box is wrapped in green paper with a white ribbon that has a frayed edge.

wishing you the  
**WARM + FUZZIES**

◆ **Rhinestone Faux-Fur Slipper**  
Faux-fur slipper with rhinestone  
detail. Man-made materials. Imported.  
reg. \$20.99  
**\$15.99 each pair**

**Purple**

S(5-6) **376-630** L(9-10) **376-918**  
M(7-8) **376-812** XL(11-12) **376-980**

**Pink**

S(5-6) **377-000** L(9-10) **377-053**  
M(7-8) **377-015** XL(11-12) **377-110**

**Blue**

S(5-6) **375-911** L(9-10) **375-945**  
M(7-8) **375-926** XL(11-12) **375-950**



Enjoy special prices and offers with  
an Avon account or Representative.

# TOASTY toes



#### ◆ Foil Printed Slipper Bootie

Foil leopard-print upper with faux-fur lining, matching bow and pom-pom detail. Man-made materials. Imported.

reg. \$32.99

**\$24.99**  
each pair

#### Grey

S(5-6) 246-755

M(7-8) 248-447

L(9-10) 248-557

XL(11-12) 248-739

#### Tan

S(5-6) 246-630

M(7-8) 246-650

L(9-10) 246-664

XL(11-12) 246-736

Enjoy special prices and offers with an Avon account or Representative.

**NEW! LIMITED EDITION**

❖ **Fair Isle Unisex Slipper**

Blue-and-white-knit Fair Isle slip-on slipper with grey faux-sherpa lining. Man-made materials. Imported.

S(5-6) **248-800** L(9-10) **251-196**  
 M(7-8) **249-348** XL(11-12) **251-330**  
 XXL(13-14) **255-942**  
 reg. **\$22.99**  
**\$16.99**



❖ **Classic Unisex Slipper**

His or hers slip-on slippers with faux-sherpa lining. Man-made materials. Imported.

reg. **\$22.99**  
**\$16.99**  
**each pair**

**Tan**

S(5-6) **004-848**  
 M(7-8) **004-829**  
 L(9-10) **004-647**  
 XL(11-12) **004-484**  
 XXL(13-14) **004-465**

**Black**

S(5-6) **004-226**  
 M(7-8) **004-264**  
 L(9-10) **004-374**  
 XL(11-12) **004-412**  
 XXL(13-14) **004-450**

**Grey**

S(5-6) **151-331**  
 M(7-8) **151-350**  
 L(9-10) **151-403**  
 XL(11-12) **151-480**  
 XXL(13-14) **151-547**

UNISEX SIZE CHART		
	women	men
S	5-6	↘
M	7-8	5-6
L	9-10	7-8
XL	11-12	9-10
XXL	13-14	11-12



3-piece set includes headband

Models are wearing 2-Pack Christmas Socks with Scrunchie, sold on page 7. Size chart on page 13.

❖ **Snowflake Sleepshirt**

Snowflake-print green Henley-style long-sleeve sleepshirt with front placket and buttons. Polyester/spandex. Center back length: 32" on M; 34" on 1X. Machine wash, line dry. Imported.

XS(0-2) <b>204-772</b>	XL(16) <b>205-908</b>
S(4-6) <b>205-180</b>	1X(18W-20W) <b>205-912</b>
M(8-10) <b>205-817</b>	2X(22W-24W) <b>205-927</b>
L(12-14) <b>205-893</b>	3X(26W-28W) <b>207-619</b>

reg. \$42.99  
**\$32.99**

❖ **Candy Cane Striped Pajama Set**

Red and white striped long-sleeve round-neck top. Matching pull-on bottom with elastic waistband and side pockets. Includes matching headband. Top and bottom: cotton. Neckline trim: cotton/spandex. Center back length for top: 25½" on M; 27" on 1X. Bottom inseam: 30" for all sizes. Machine wash and dry. Imported.

XS(0-2) <b>202-909</b>	L(12-14) <b>203-336</b>	2X(22W-24W) <b>203-393</b>
S(4-6) <b>203-135</b>	XL(16) <b>203-340</b>	3X(26W-28W) <b>204-768</b>
M(8-10) <b>203-321</b>	1X(18W-20W) <b>203-355</b>	

reg. \$56.99

**\$44.99 the set**

# O COZY night



3-piece  
set  
includes  
headband

NEW! LIMITED EDITION

#### ◆ Christmas Tree Pajama Set

Multicolor Christmas tree print, navy blue long-sleeve round-neck top with side slits. Matching pull-on jogger bottom with rib cuff, elastic waistband and side pockets. Includes matching headband. Top and bottom: 100% cotton. Neckline trim and bottom rib cuff: cotton/spandex. Top: center back length: 25 $\frac{1}{2}$ " on M; 27 $\frac{1}{2}$ " on 1X. Bottom inseam: 29 $\frac{1}{2}$ " on all sizes. Machine wash and dry. Imported.

XS(0-2) **230-855**

S(4-6) **232-399**

M(8-10) **232-403**

L(12-14) **232-676**

XL(16) **232-680**

1X(18W-20W) **246-569**

2X(22W-24W) **246-607**

3X(26W-28W) **246-611**

reg. **\$56.99**

**\$44.99 the set**



two pairs  
of socks  
+ hair  
scrunchie

#### ◆ 2-Pack Christmas Socks with Scrunchie

Red and green Santa and black and red reindeer socks. Comes with red scrunchie with jingle bells. Fits shoe sizes 6-10. Socks: polyester/spandex; scrunchie: 100% polyester. Machine wash and dry (socks only). Imported.

**194-177**

reg. **\$12.99**

**\$9.99 the set**

#### ◆ Whimsical Holiday Slipper

Red faux-sherpa upper with green embroidered Christmas tree and candy cane striped insole. Man-made materials. Imported.

S(5-6) **171-738**

M(7-8) **171-962**

L(9-10) **171-977**

XL(11-12) **171-981**

reg. **\$20.99**

**\$15.99**

Enjoy special prices  
and offers with  
an Avon account or  
Representative.

# PLAID tidings!

## ◆ Plaid Button-Detail Slipper

Plaid upper with matching button detail, black faux-fur lining and trim. Man-made materials. Imported.

reg. \$23.99

**\$17.99 each pair**

### White/Black

S(5-6) 169-473

M(7-8) 169-860

L(9-10) 169-894

XL(11-12) 170-291

### Green/Black

S(5-6) 168-022

M(7-8) 168-037

L(9-10) 168-151

XL(11-12) 168-166

### Red/Black

S(5-6) 168-170

M(7-8) 168-792

L(9-10) 169-200

XL(11-12) 169-435

Enjoy special prices and offers with an Avon account or Representative.



**NEW!  
LIMITED  
EDITION**



NEW! LIMITED EDITION

RSVP  
party!



◆ **Velvet  
Long-Sleeve  
Dress**

Black long-sleeve knee-length dress with scoop neck, smocked waist and zipper closure on back. Polyester/spandex. Center back length: 38" on M; 40" on 1X. Machine wash, dry flat. Imported

XS(0-2) **369-230**

S(4-6) **369-279**

M(8-10) **369-450**

L(12-14) **369-465**

XL(16) **369-484**

1X(18W-20W) **369-537**

2X(22W-24W) **369-556**

3X(26W-28W) **369-594**

reg. **\$66.99**

**\$52.99**

Model is wearing Green Beaded Layered Necklace, coming soon!  
Size chart on page 13.



Model is wearing  
Shimmer Hoop  
Earrings, sold on  
page 23, and Slim  
Faux-Suede Pant,  
sold on page 12.



❖ **Crushed Velvet Pintuck Tunic**

Grey long-sleeve V-neck tunic with button-front placket and pintuck detail. Polyester/spandex. Center back length: 29" on M; 30" on 1X. Machine wash, line dry. Imported.

XS(0-2) <b>370-298</b>	XL(16) <b>370-499</b>
S(4-6) <b>370-302</b>	1X(18W-20W) <b>370-522</b>
M(8-10) <b>370-389</b>	2X(22W-24W) <b>370-541</b>
L(12-14) <b>370-465</b>	3X(26W-28W) <b>370-613</b>

reg. \$53.99  
**\$42.99**

❖ **Faux-Leather Blazer**

Black blazer with peak lapel and one button closure on front, long sleeves with button detail, slit pockets and back vent. Lined. Polyester/spandex with polyurethane coating. Polyester lining. Center back length: 28" on all sizes. Dry clean only. Imported.

XS(0-2) <b>445-960</b>	XL(16) <b>448-477</b>
S(4-6) <b>448-386</b>	1X(18W-20W) <b>448-921</b>
M(8-10) <b>448-405</b>	2X(22W-24W) <b>449-000</b>
L(12-14) <b>448-462</b>	3X(26W-28W) <b>449-014</b>

reg. \$74.99  
**\$59.99**

Pink top, jeans and earrings are not available.

# wrapped in **HOLIDAY STYLE**

## **A. ♦ Faux-Fur Trim Cape**

Plaid cape with fringe and faux-fur collar. Hook-and-eye closure on front. Body and collar, 100% polyester. Dry clean only. Missy: 56" L x 53" W. Plus: 61" L x 58" W. Imported.

Missy **369-924**

Plus **369-981**

reg. **\$64.99**

**\$49.99**

## **B. ♦ Slim Faux-Suede Pant**

Black slim-fitting faux-suede pants with elastic waist. Polyester/spandex. Inseam: 28 $\frac{1}{2}$ " on all sizes. Hand wash, line dry. Imported.

XS(0-2) **450-048**

S(4-6) **450-330**

M(8-10) **451-360**

L(12-14) **451-446**

XL(16) **451-450**

1X(18W-20W) **451-685**

2X(22W-24W) **451-833**

3X(26W-28W) **451-852**

reg. **\$49.99**

**\$39.99**

Model is wearing Sequin Ballet Flat, sold on page 13.

**NEW! LIMITED EDITION**

Model is wearing Sunburst Jewelry Collection, sold on Avon.com.

**C. ❖ Lace-Sleeve Top**

Red long-sleeve top with lace detail, round neck and cuffs. Body: polyester/spandex. Lace: polyeseter. Center back length: 24 $\frac{1}{2}$ " on M; 26" on 1X. Machine wash, line dry. Imported.

XS(0-2) **369-996**  
 S(4-6) **370-044**  
 M(8-10) **370-082**  
 L(12-14) **370-188**  
 XL(16) **370-211**  
 1X(18W-20W) **370-230**  
 2X(22W-24W) **370-245**  
 3X(26W-28W) **370-264**  
**reg. \$49.99**  
**\$39.99**

**D. ❖ Long-Sleeve Sequin Pocket Tee**

Black long-sleeve soft V-neck tee with sequin detail on pocket. Rayon/spandex/sequins. Center back length: 22 $\frac{1}{2}$ " on M; 25" on 1X. Machine wash, dry flat. Imported.

XS(0-2) **369-609**  
 S(4-6) **369-670**  
 M(8-10) **369-719**  
 L(12-14) **369-742**  
 XL(16) **369-776**  
 1X(18W-20W) **369-780**  
 2X(22W-24W) **369-848**  
 3X(26W-28W) **369-871**  
**reg. \$32.99**  
**\$24.99**



**E. ❖ Sequin Ballet Flat**

Silver sequin ballet flat with contrasting black toe cap and wavy cushion insole. Man-made materials. Half sizes, order size up. Imported.

6M **369-030** 9M **369-082**  
 7M **369-044** 10M **369-097**  
 8M **369-078** 11M **369-169**  
**reg. \$37.99**  
**\$28.99**



APPAREL SIZE CHART			
SIZE	BUST	WAIST	HIP
XS 0/2	30.5"-32"	23.5"-25"	32.5"-34"
S 4/6	33.5"-35"	26.5"-28"	35.5"-37"
M 8/10	36.5"-38"	29.5"-31"	38.5"-40"
L 12/14	39.5"-41"	32.5"-34"	41.5"-43"
XL 16	43"-44"	35.5"-36.5"	44.5"-45.5"
1X 18W/20W	46.5"-48.5"	39"-41"	48"-50"
2X 22W/24W	50.5"-52.5"	43"-45"	52"-54"
3X 26W/28W	54.5"-56.5"	47"-49"	56"-58"

Enjoy special prices and offers with an Avon account or Representative.



set to **FÊTE**

**NEW! LIMITED EDITION**

**Winter Garden  
Collection**  
Multicolor glass  
stones set in  
goldtone.

**Necklace**  
14½" L with  
3½" extender.  
**266-119**  
reg. \$84.99  
**\$64.99**

**Statement  
Earrings**  
2" L. Pierced.  
**266-229**  
reg. \$32.99  
**\$24.99**

**Stretch  
Bracelet**  
One size  
fits most.  
**266-123**  
reg. \$44.99  
**\$34.99**

**Statement Ring**  
Sizes:  
6 **266-233**  
8 **266-252**  
10 **266-271**  
reg. \$19.99  
**\$14.99**

**Metal Strap  
Watch**  
Bracelet watch  
set in rose  
goldtone. 8" L  
with 26mm  
diam. case.  
**266-305**  
reg. \$64.99  
**\$49.99**

NEW! LIMITED EDITION



**Filigree Initial Necklace**

Domed filigree initial set in silvertone. Necklace, 16½" L with 3½" extender. Pendant, 1" L. reg. \$12.99

**\$9.99 each**



A

374-810



B

375-046



C

375-050



D

375-065



E

375-070



G

375-084



J

375-099



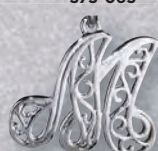
K

375-103



L

375-118



M

375-122



N

375-137



P

375-141



R

375-156



S

375-160



T

375-175



V

375-180





ribbons,  
bows &  
**MISTLETOE**

**Pavé Bow  
Collection**

Bow motif with  
clear pavé stones  
set in silvertone.

**Drop Earrings**

With glass teardrop  
stone. Approx. 2" L.  
Pierced. **374-714**  
reg. \$19.99  
**\$14.99**

**Pull-Cord  
Bracelet**

One size fits  
most. Bow,  
approx. 1 1/4" L.  
**374-729**  
reg. \$19.99  
**\$14.99**

**Lariat Necklace**

With glass teardrop  
stone. 16 1/2" L with  
3 1/2" extender.  
Drop, approx.  
2 1/2" L. **374-700**  
reg. \$22.99  
**\$16.99**

**NEW! LIMITED EDITION**

*necklace,  
earrings and  
ring set*

**Precious  
Poinsettia  
3-Piece Set**  
Goldtone  
with green,  
red and clear  
stone accents.  
16½" L with  
3½" extender.  
Pendant,  
approx. 1" L.  
Pierced studs,  
approx. ½" L.  
Ring, approx.  
½" W.

Sizes:  
6 375-505  
8 375-524  
10 375-510  
reg. \$22.99  
**\$16.99**  
**3-piece set**



Wreath (Green)/  
Goldtone  
**219-858**



Reindeer (Red)/  
Goldtone  
**219-915**



Angel (Green/Red)/  
Silvertone  
**219-972**

Wreath  
(Green Beads)/  
Goldtone  
**221-122**



**Happy Holidays  
Collection**  
With colored  
enamel and clear  
pavé or colored  
stone accents.

**Drop Earrings**  
1" L. Pierced.  
reg. \$12.99  
**\$9.99 each pair**

**Stretch Bracelet**  
With the look of  
Murano glass  
beads and metal-  
tone rondelles.  
One size fits most.  
Charm, approx. ¾" L.  
reg. \$16.99  
**\$12.99 each**

Reindeer  
(Ivory Beads)/  
Goldtone  
**221-141**



Angel  
(Red Beads)/  
Silvertone  
**221-380**



# merry MOMENTS

## Scattered Rhinstone Watch

Leather-like  
strap, 9" L.  
Sivertone case  
with rhinestone-  
accented dial,  
35mm diam.

Blue 375-471

Red 375-486

Black 375-490

reg. \$53.99

**\$42.99**  
each



*pack of 12  
earrings*

**Everything Merry  
12-Piece Earrings Pack**  
Mix of colored studs and drops  
set in silvertone or goldtone.  
Range from 1/4"-1/2" L. Pierced.

**258-038**  
reg. \$24.99  
**\$19.99 the pack**



# fun & FESTIVE

## Peppermint Swirl Collection

Red- and crystal-accented  
beads and silvertone,  
pearlesque and solid red  
beads set in silvertone.

### Necklace

34" L with 3½"  
extender. **258-004**  
reg. \$24.99  
**\$19.99**

### Earrings

1" L. Pierced.  
**258-023**  
reg. \$16.99  
**\$12.99**

### Cord Bracelet

With black cord. 7¼" L  
with 1½" extender.  
**258-019** reg. \$16.99  
**\$12.99**

**NEW! LIMITED EDITION**

**Festive Friends Stud Duo Earrings Pack**

Studs: approx. 1/4" L. Drops: approx.  
1/2" L for dog; 1/4" L for cat. Pierced.

Red Plaid Studs/Dog with Pavé Accents/  
Goldtone **256-130**

Black Plaid Studs/Cat with Hematite Accents/  
Silvertone **257-945**

reg. \$19.99

**\$14.99 each pack of 2**

**Festive Friends Watch**

Leatherlike strap with silvertone dial.  
9" L with 28mm diam. case.

Black (Cat) **257-979** Red (Dog) **257-964**

reg. \$53.99

**\$42.99 each**



*packs of 2 earrings*



# BLING on the joy

## **Festive Ornament Collection**

Ornaments: green and red enamel with green and red stone accents; plus ivory faux pearls, goldtone bells and red beads.

## **Necklace**

16½" L. with 3½" extender. Charms, ¾"-1" L. **221-400** reg. \$24.99 **\$19.99**

## **Drop Earrings**

2¼" L. Pierced. **221-510** reg. \$16.99 **\$12.99**

## **Stretch Bracelet**

One size fits most. Charms, approx. ¾" L. **221-620** reg. \$19.99 **\$14.99**

## **Pin**

Green and red enamel with green, red and clear stone accents. 2" L. **221-668** reg. \$19.99 **\$14.99**



**NEW! LIMITED EDITION**

*necklace and earrings set*

**Floating Fireball Collection**

Colored stones set in silvertone.

**Necklace and Earrings Set**

Necklace, 16½" L with 3½" extender. Pierced studs, ¼" diam.

Red **258-057** Green **258-061**

Blue **258-042**

reg. \$19.99

**\$14.99 each set**

**Stretch Bracelet**

Two-row bracelet. One size fits most.

Red **264-541** Green **258-865**

Blue **258-698**

reg. \$19.99

**\$14.99 each**

**Shimmer Hoop Earrings**

Accented with silver stones. 1½" diam. Pierced.

Red **375-213**

Black **375-194**

Clear **375-209**

reg. \$16.99

**\$12.99 each pair**

**Sparkle and Shine Mega Set**

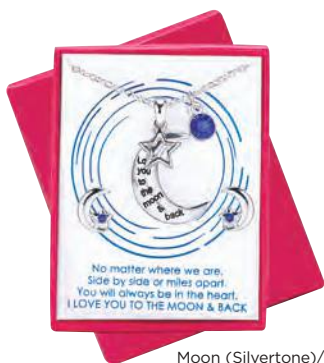
Includes 8 pairs of pierced studs, hoops or drops (range from 1/4" to 1/2" diam.; drops, 1" L); 2 necklaces (with 3 1/2" extenders) and 2 bracelets (one size fits most). With a mix of colored stones, clear stone accents or faux pearls set in silvertone or goldtone. **264-723**

reg. \$52.99

**\$39.99**

pack of 12

pack of 12 earrings, necklaces and bracelets



Moon (Silvertone)/  
Blue Stones  
**222-960**



Heart (Silvertone)/  
Crystal Stones  
**223-842**



Circle (Goldtone)/  
Crystal Stones  
**224-007**

**Sentimental Necklace and Earrings Set**

Necklace, 16 1/2" L with 3 1/2" extender. Pendant, ranges from approx. 1/2"-1" L. Pierced studs, range from approx. 1/4"-1/2" L. reg. \$16.99

**\$12.99 each set**

necklace and earrings sets





## INSPIRED giving

### **Pearly Cross Collection**

Pearlesque and hematite stones set in silvertone.

**Pendant Necklace**  
16½" L with 3½" extender. Pendant, approx. 1½" L.

**269-907**  
reg. \$16.99  
**\$12.99**

**Stretch Bracelet**  
With faceted white glass beads. Cross motif, 1" L. One size fits most.

**270-539**  
reg. \$16.99  
**\$12.99**

**Drop Earrings**  
1¼" L. Pierced.  
**276-939**  
reg. \$12.99  
**\$9.99**



**NEW!  
LIMITED  
EDITION**

*necklace and  
ring set*

*set of 3  
bracelets*

**Pearly Peacock  
Collection**

Glass and  
pearlesque beads  
set in goldtone.

**Necklace and  
Stretch Ring Set**

With hammered  
metal goldtone  
accent. 28" L with  
3 1/2" extender  
(short row, 24" L).  
Ring with textured  
detail stretches to  
fit most. **264-742**  
reg. \$24.99

**\$19.99 the set**

**Teardrop Earrings**

With CZ accents.  
2" L. Pierced.

**264-829**

reg. \$12.99

**\$9.99**

**Stretch  
Bracelet Set**

One size fits most.

**265-940**

reg. \$16.99

**\$12.99 set of 3**

# a touch of **ELEGANCE**

*necklace and  
earrings set*



### **Mystic Lace Collection**

Glass stones with the look of mystic topaz set in hematite-plated metal.

**Stretch Bracelet**  
One size fits most.  
**375-543**  
reg. \$19.99  
**\$14.99**

**Y Necklace and  
Earrings Set**  
20" L with 3/2" extender. Drop, 2" L.  
Pierced studs, 3/4" L.  
**375-539**  
reg. \$22.99  
**\$16.99 the set**



A



B



C

D

## FINE JEWELRY

### A. Stainless Steel Footprints in the Sand Necklace

Stainless steel with goldtone accents. Three-layer functional locket with inscription. 17" L with 1" extender. Pendant, 1" L. **375-558**  
reg. \$49.99  
**\$39.99**

**B. Sterling Silver Angelic Heart Pendant Necklace**  
Red heart-shaped CZ set in sterling silver. 17" L with 1" extender. Pendant, 3/4" L.

**277-199**  
reg. \$64.99  
**\$49.99**

### C. Sterling Silver Half Eternity Wedding Band

With CZs. 1/8" W.  
Sizes:  
5 **375-562** 8 **375-596**  
6 **375-577** 9 **375-600**  
7 **375-581** 10 **375-615**  
reg. \$49.99  
**\$39.99**

### D. Sterling Silver Trinity Engagement Ring

1/4" W. CZ stone, approx. 1.25-carat weight equivalent.  
Sizes:  
5 **375-620** 8 **375-668**  
6 **375-634** 9 **375-672**  
7 **375-649** 10 **375-687**  
reg. \$58.99  
**\$44.99**

NEW! LIMITED EDITION



set of 2 necklaces



set of 2 bracelets

**Men's Stainless Steel Collection**  
Stainless steel chain.

**Beaded Necklace Set**  
3mm blue and grey beads. 24" L with lobster closure. **277-131**  
reg. \$34.99  
**\$26.99 the set**

**Beaded Bracelet Set**  
6mm blue and grey beads. One size fits most. **277-170**  
reg. \$24.99  
**\$19.99 the set**

**Serenity Prayer Necklace**  
Serenity Prayer on back of pendant with antique finish, 1" L. 24" L with lobster closure. **277-021**  
reg. \$49.99  
**\$39.99**

show your  
**SPIRIT**



# SANTA'S TOY SHOP: open for business



## ◆ Toy Shop Tabletop Light-Up

Santa and the elves are busy making toys for all the good boys and girls! Center tree spins. Shop lights up. Plays eight holiday tunes (see page 31). Switch for lights, sound and movement, lights with movement or off. Takes three AA batteries (not included) with 4.5V 5000mA DC jack (adapter not included). 9 1/4" L x 5" W x 9 1/2" H. Polyresin, plastic.

Imported. 283-937

reg. \$64.99

\$49.99





**PLAYS EIGHT HOLIDAY TUNES:**  
*We Wish You a Merry Christmas*  
*Hark! The Herald Angels Sing*  
*Jingle Bells*  
*Silent Night*  
*Deck the Halls*  
*Joy to the World*  
*The First Noel*  
*O Christmas Tree*



❖ **Santa in Stocking Tabletop Light-Up**

Santa's door opens and our jolly friend pops out, ready to go! Stocking house, tree and street lamps light up. Switch for lights, sound and movement, lights with movement or off. Takes three AA batteries (not included) with 4.5V 5000mA DC jack (adapter not included). 9 1/4" L x 5" W x 9 1/2" H. Polyresin, plastic. Imported.

**539-125**  
 reg. \$64.99  
**\$49.99**



# LIGHTS

holiday, action!



#### ❖ Holiday Church Tabletop Light-Up

O come all ye faithful! Church and town square light up. Center Christmas tree spins. Plays eight holiday tunes (see page 31). Switch for lights, sound and movement, lights with movement or off. Takes three AA batteries (not included) with 4.5V 5000mA DC jack (adapter not included). 9 1/4" L x 5" W x 9 1/2" H. Polyresin, plastic. Imported. **281-767**  
reg. \$64.99  
**\$49.99**







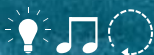
◆ **Holiday Hills Swing Light-Up**

Swing into the holidays! Child swings back and forth as Santa looks on and skaters take a turn around the rink. Trees light up. Plays eight holiday tunes (see page 31). Switch for lights, sound and movement, lights with movement or off. Takes three AA batteries (not included). 7½" L x 7¼" W x 9¼" H. Polyresin, plastic. Imported.

281-733

reg. \$69.99

**\$54.99**



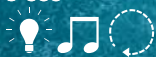
# DASHING through the snow



◆ **Holiday Hills Ski Land Light-Up**

Christmas at the ski resort! Skiers shush down and head back up for more thrills. Lights up and plays eight holiday tunes (see page 31). Switch for lights, sound and movement, lights with movement or off. Takes three AA batteries (not included) with 4.5V 5000mA DC jack (adapter not included). 7½" L x 7¼" W x 9¼" H. Polyresin, plastic. Imported. **278-559**

reg. \$64.99  
**\$49.99**



**DON'T FORGET  
THE BATTERIES!**

◆ **Call Strong Batteries**

Alkaline. Not rechargeable.

**36 Pack AA Batteries 116-023**

**36 Pack AAA Batteries 116-980**

reg. \$29.99

**\$22.99 each pack of 36**

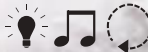


❖ **Santa's Midnight Sleigh Ride Light-Up**

Santa's ready to ride! The jolly ol' elf and his tiny reindeer dash up and down over our bottle brush forest. Trees and sleigh light up. Plays eight holiday tunes (see page 31). Switch for lights, sound and movement, lights with movement or off. Takes three AA batteries (not included) with 4.5V 500mA DC jack (adapter not included). 8<sup>3</sup>/<sub>4</sub>" L x 5" W x 12<sup>1</sup>/<sub>2</sub>" H. Polyresin, plastic. Imported. **278-525**

reg. \$64.99

**\$49.99**





**Santa**  
013-519

**Snowman**  
012-728

❖ **Sledding Christmas Shelf Sitter Light-Up**

Santa and his snowman buddy are ready for holiday fun! Cheeks light up on each character. On/off switch.

Takes two AA batteries (not included). Each, 10" L x 4 1/2" W x 11 1/2" H. Polyester, metal. Imported.

reg. \$34.99

**\$26.99 each**



❖ **Over the Door Santa Greeter Light-Up**

Motion-sensor Santa greets guests with a twinkle in his cheeks. Hangs over the door. Cheeks light up. On/off switch. Takes three AA batteries (not included).

24" L x 20" W x 2" H.

Polyester. Imported.

**282-209**

reg. \$44.99

**\$34.99**



*Greets guests and says:  
"Merry Christmas to all,  
and to all a good night!"*



**NEW! LIMITED EDITION**

**A. ♦ Countdown to Christmas Plush**

Our snowman is counting it down! Inflatable interior and base with snowman fabric overlay, detachable scarf and felt candy cane. Move the candy cane each day in December as it gets closer to Christmas. Some assembly required. Foot pump included. 15" L x 11" W x 28" H. Polyester, plastic. Imported.

**014-606**  
reg. \$49.99  
**\$29.99**

A

*Stands 28" tall!*



B

*Stands 25" tall!*



**B. ♦ Sledding Christmas Greeter Light-Up**

Let's go sledding! Sled lights up. Santa's hands can be secured to sled with hook and loop. On/off switch. Takes two AA batteries (not included). Sled: 7 1/2" L x 2 1/2" W x 19 1/2" H. Santa: 10" L x 4" W x 25" H. Wood, polyester. Imported.

**014-352**  
reg. \$58.99  
**\$49.99**



◆ **Woodland Winter Village Light-Up**

Sculpted woodland scene with back-lit filigree design creates a cozy silhouette of our fave festive friends. On/off switch. Takes two AAA batteries (not included). 13<sup>3</sup>/<sub>4</sub>" L x 2" W x 8<sup>3</sup>/<sub>4</sub>" H. MDF wood. Imported. **283-980**

reg. \$49.99  
**\$39.99**



◆ **Christmas Tree Village Set**

Let's head to the village tree stand 'cause it's time to pick out the Christmas tree! Lights up. Takes three AA batteries. On/off switch. Tree stand: 5<sup>3</sup>/<sub>4</sub>" L x 4" W x 7" H; pickup truck: 5<sup>1</sup>/<sub>4</sub>" L x 2<sup>1</sup>/<sub>2</sub>" W x 2<sup>3</sup>/<sub>4</sub>" H; side trees: 3" L x 2" W x 2" H. Polyresin, plastic. Imported. **282-854**

reg. \$58.99

**\$49.99 3-piece set**



**NEW! LIMITED EDITION**

◆ **Bright Moments Bottle Brush Tree Set Light-Up**

Quintessential bottle brush Christmas trees with holiday lights. Each takes three AA batteries (not included). On/off switch.

Each, 3" diam. Small: 6" H; medium: 7<sup>3</sup>/<sub>4</sub>" H; large: 10<sup>1</sup>/<sub>4</sub>" H. Plastic, metal.

Imported. **238-291**

reg. \$39.99

**\$29.99 set of 3**



◆ **Bright Moments Inspirational Pewter Ornament**

Continue the tradition!

Embossed with the 2023 Avon Fine Collectibles stamp on back. Includes velvet keepsake pouch and easy-to-hang tassel.

2<sup>1</sup>/<sub>8</sub>" W x 2<sup>3</sup>/<sub>4</sub>" L.

Pewter, polyester. Imported. **234-573**

reg. \$20.99

**\$15.99**



◆ **Bright Moments Hurricane Glass Set Light-Up**

Houses and snowflakes light up.

Each takes three AA batteries (not included). On/off switch.

Each, 3<sup>1</sup>/<sub>2</sub>" diam. Small: 4" H; large 8" H. Glass. Imported.

**234-611**

reg. \$32.99

**\$24.99 set of 2**



◆ **Bright Moments Glass Tree Light-Up**

Santa is on the scene! Lights up and plays eight holiday tunes (see page 31). Takes three AA batteries (not included). Switch for lights only, lights and sound or off.

Glass, plastic, resin. 4" diam. x 10<sup>1</sup>/<sub>2</sub>" H.

Imported.

**235-584**

reg. \$39.99


**\$29.99**




all is CALM...



◆ **Season's Blessings Cross Light-Up**

Back-lit nativity scene with an inscription from Luke 1:14: "And you will have joy and gladness; and many will rejoice at his birth." Can be hung up or placed on a flat surface. On/off switch. Takes two AAA batteries (not included). 10" L x 1 1/2" W x 13" H. MDF wood, plastic. Imported. **284-020**  
reg. \$44.99  
**\$34.99** 

◆ **Holy Family Ornament Light-Up**

Mary, Joseph and baby Jesus light up the Christmas tree. On/off switch. Takes three LR44 button cell batteries (included). 3 1/2" L x 3" W x 4 1/2" H. Porcelain. Imported. **284-034**  
reg. \$16.99   
**\$12.99**



# all is BRIGHT



#### ◆ Peace on Earth Faux-Candle Light-Up

Let there be peace on Earth! Flameless light flickers inside. On/off switch. Takes two AA batteries (not included). 4<sup>3</sup>/<sub>4</sub>" L x 4<sup>3</sup>/<sub>4</sub>" W x 6<sup>1</sup>/<sub>2</sub>" H. Porcelain, plastic. Imported. **284-049**

reg. \$32.99

**\$24.99**



#### ◆ Peace on Earth Angel Light-Up

Hark! The herald angels sing! With a goldtone "Peace" charm, our angel shimmers with glowing stars on her gown. Flameless light flickers inside. On/off switch. Takes two LR44 button cell batteries (included). 5" L x 3<sup>1</sup>/<sub>4</sub>" W x 11" H. Porcelain, metal. Imported. **283-994**

reg. \$39.99

**\$30.99**



# holiday open house



## 7 Days of Avon Beauty

Celebrate the season with seven makeup and skin care must-haves! Each door opens to a beautiful surprise! Paperboard, 7 $\frac{1}{8}$ " W x 2" D x 12 $\frac{7}{8}$ " H.

163-069 reg. \$66

\$29.99

7-piece set

## Includes:

- Isa Knox LXNEW Ultimate Rejuvenating Day Cream Mini, .5 fl. oz.
- fmg LOVE at 1st Lash Mini Mascara in Blackest Black, .13 fl. oz.
- fmg Glimmer Lip Plumper, .3 fl. oz.
- Isa Knox LXNEW Ultimate Rejuvenating Serum Mini, .23 fl. oz.
- fmg Glimmer Diamonds Eyeliner in Black Ice, .01 oz. net wt.
- fmg Glimmer Lip Glaze in Flash, .3 fl. oz.
- Farm Rx Super Greens Refreshing Gel Cleanser Mini, 1 fl. oz.

Beginning  
163-020



New Classic  
162-794

**NEW!  
LIMITED  
EDITION**

**fmg Eye Moment  
Palette**

Multi-finish  
eyeshadow palette  
to create your  
best holiday eyes!  
Includes 10  
sensational shades  
in satin, shimmer,  
glitter and matte  
finishes, mirror and  
brush applicator.  
Each, .03 oz. net wt.  
reg. \$35  
**\$22 each**

**fmg Glimmer  
Wish for a Kiss**

Thirty of our best-selling  
fmg Glimmer Satin Lipstick  
shades in take-to-every-  
party sample sizes housed  
in a cute keepsake metal  
tin. Comes in gift box.  
Each, .021 oz. net wt.

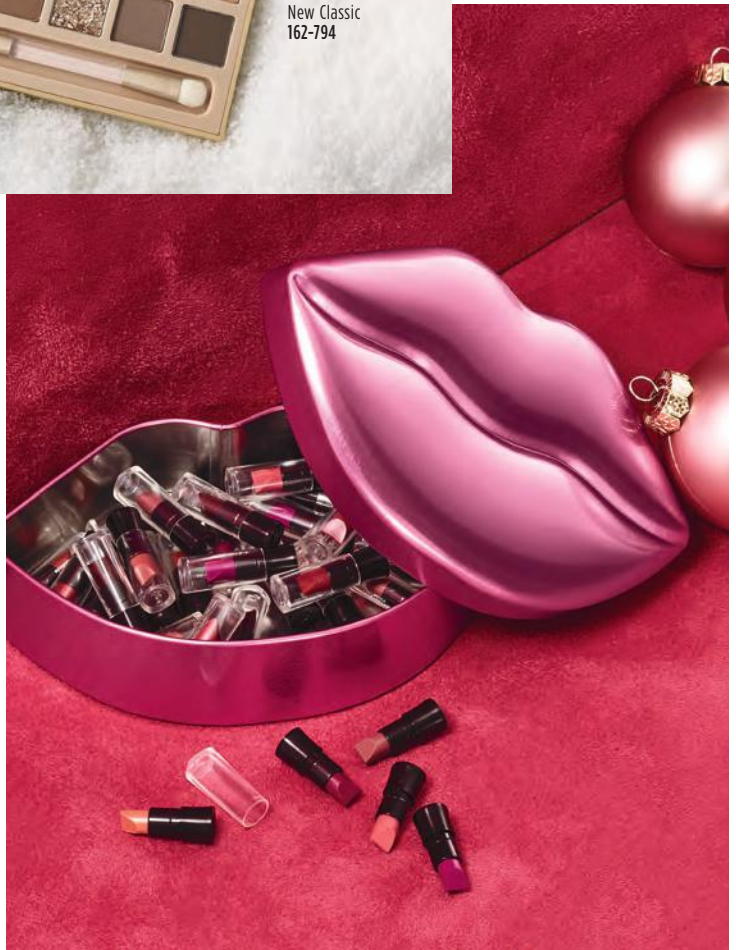
**Includes shades:**

Luna, Wild Rose, Rose  
Angel, Sierra Sunset, Poppy,  
Violet Night, Hibiscus,  
Firebolt, Thunderbird, Fog,  
Eclipse, Aster, Wild Cherry,  
Tulip, Constellation,  
Morning Glory, Plum  
Blossom, Desert Moon,  
Equinox and Twilight.

**164-031 reg. \$100  
\$29.99**

**31-piece set**

Enjoy special prices and offers with  
an Avon account or Representative.



NEW! LIMITED EDITION

**fmg Glimmer Pout Perfect  
Mini Lipstick Gift Set**

Perfect your pout with a trio of cult-fave fmg Glimmer Satin mini lipsticks. Comes in gift box. Each, .04 oz. net wt.

Includes shades:

- Luna
- Plum Blossom
- **Holiday Set Exclusive!**  
French Rose

164-490 reg. \$36

**\$29.99**

3-piece set



# nifty +



**fmg Mini Makeup  
Essentials Kit**

Your must-have merry makeup essentials all ready to go for every holiday event.

Includes:

- **Holiday Set Exclusive!**  
fmg Glimmer Duo  
Eyeshadow Compact,  
.14 oz. total net wt.
- fmg LOVE at 1st Lash  
Mini Mascara in  
Blackest Black, .13 fl. oz.
- fmg Glimmer Mini  
Satin Lipstick in  
Wild Rose, .04 oz. net wt.
- **Be Blushed Cheek Color**  
in Blushing Nude,  
.14 oz. net wt.
- **Clear Green Pouch,**  
Zippered. 4<sup>3</sup>/<sub>4</sub>" L x 4<sup>3</sup>/<sub>4</sub>" H  
x 4" D. PVC. Imported.

163-460 reg. \$55

**\$40**

5-piece set

**fmg Expert Tips  
Nail Art Tool Kit**

Merry your mani and get nails in tip-top shape with this handy kit!

**Includes:**

- Foam nail buffer block, 7" L.
- Nail buffer, 7" L.
- Two nail files, each, 7" L.
- Cuticle pusher, 5" L, stainless steel.
- Dual-ended marbling and dotting tool, 4" L, metal alloy.
- Cuticle cutter, stainless steel.
- Nail clipper, 2½" L, stainless steel.
- Storage box, 7½" L x 3½" H, plastic.

**006-970 reg. \$30**

**\$16**

**9-piece set**



*After you prep,  
add some nail color,  
sold on page 94!*

# gifts

**VDL Expert Slim  
Glow Lip Balm  
Special Edition Set**

Sparkle through the holidays and beyond with supersoft lips and hands! Comes in gift box.

**Includes:**

- **VDL Expert Slim Glow Lip Balm** in Pink Sparkle, .08 oz. net wt.
- **VDL Lumilayer Perfumed Hand Cream** in rose and peony scent, 1.01 oz. net wt.

**168-018 reg. \$28.99**

**\$19.99**

**2-piece set**



Enjoy special prices and offers with an Avon account or Representative.

**Men's Fragrance Essentials Gift Set**  
*fresh aromatic*  
Elevate your fragrance experience  
with our best-selling classics!  
Comes in gift box.

**Includes:**

- **Black Suede Eau de Toilette**, Bergamot, soft leather and oakmoss. 3.4 fl. oz.
- **Wild Country Cologne**, Lavender, coriander seed and sandalwood. 3 fl. oz.
- **Wild Country Aftershave Splash**, 4 fl. oz.

217-195 reg. \$57  
**\$29.99**

**3-piece set**



**magnifiSCENTS!**



**Haiku Serenity Gift Set**

*fresh green floral*

Delight in the serenity of a beautiful Japanese garden blooming with Japanese yuzu, delicate muguet and blonde woods. Comes in gift box.

Includes:

- Haiku Eau de Parfum, 1.7 fl. oz.
- Haiku Hair & Body Mist, 6.7 fl. oz.
- Haiku Intense Travel Spray, .3 fl. oz.

217-161 reg. \$57

**\$29.99**

**3-piece set**

Enjoy special prices and offers with an Avon account or Representative.

# ho, ho, HYDRATION!



## belif in wonder holiday set

Celebrate explosive hydration!  
One full-size fave plus two minis.  
Limited-edition kit includes:

- The True Cream  
Moisturizing Bomb, 1.68 fl. oz.
- Aqua Bomb Hydrating  
Body Moisturizer, 1.01 fl. oz.
- Moisturizing Eye Bomb, .16 fl. oz.

Comes in festive holiday gift box.

**208-562 reg. \$42**

**\$38**

**3-piece set**



**NEW!  
LIMITED  
EDITION**



**belif glow on the go holiday travel kit**

Five must-have mini sizes.

Limited-edition kit includes:

- The True Cream Moisturizing Bomb, .33 fl. oz.
- The True Cream Aqua Bomb, .33 fl. oz.
- Moisturizing Eye Bomb, .16 fl. oz.
- Aqua Bomb Hydrating Toner, .67 fl. oz.
- Aqua Bomb Jelly Cleanser, 1.01 fl. oz.

Comes in festive holiday gift box.

**210-736 reg. \$30**

**\$23**

**5-piece kit**

Enjoy special prices and offers with an Avon account or Representative.

# holiday BESTIES

## The Face Shop

### x earp earp Herb Day 365 Foaming Cleanser Trio Trial Kit

Mini daily cleansers infused with naturally derived herbal and fruit extracts. Each, 2 fl. oz. Boxed set includes:

- **Lemon & Grapefruit**  
Freshen oily skin.
- **Acerola & Blueberry**  
See a clearer complexion.
- **Aloe & Green Tea**  
Hydrate dry skin.

904-947 reg. \$11

**\$8.40**

**3-piece kit**



## The Face Shop

### x earp earp Best Sellers Set

Three skin care beauties, all in one cute kit.

Boxed set includes:

- **The Therapy**  
**Vegan Blending Cream**  
Lower layer of emulsified cream with an upper layer of oil-gel cream. .33 fl. oz.
- **Rice Water Bright**  
**Foaming Cleanser**  
Gently moisturizing foam with rice extract. 1.01 fl. oz.
- **Real Nature**  
**Rice Face Mask**  
Brightening and softening sheet mask with rice extract. .7 oz. net wt.

918-060 reg. \$10

**\$8**

**3-piece kit**





**The Face Shop x earp earp  
Real Nature Mask Sheet Set**

With naturally derived ingredients.

10 single-use sheet masks.

Each, .7 oz. net wt. Boxed set includes:

- **Honey mask** Hydrates for an extra glow.
- **Aloe and Potato masks**  
Hydrate and soothe.
- **Lemon and Rice masks** Brighten.
- **Avocado and Green Tea masks** Hydrate.
- **Red Ginseng, Blueberry and Pomegranate masks** Help firm.

900-717 reg. \$11

**\$8.80**

**10 masks**

NEW! LIMITED EDITION



**Isa Knox LXNEW Ultimate Day and Night Gift Set**  
With peony extract, plus niacinamide and panthenol. See younger skin blossom. Full-size day and night creams. Comes in gift box.

Includes:  
• **Rejuvenating Day Cream**  
1.7 fl. oz.  
• **Rejuvenating Dual Night Cream**  
Volume Cream/  
Firming Cream.  
Each, .85 fl. oz.  
**213-716**  
reg. \$100  
**\$39.99**  
2-piece set

## GIVE beautifully

**Farm Rx Skin De-Stressing Gift Set**  
Visibly improve wrinkles. Plus, massage with the relaxing wand to help ease facial tension. Comes in gift box.

Includes:  
• **Farm Rx Bakuchiol Serum** 1 fl. oz.  
• **Farm Rx Bakuchiol Cream** 3.04 fl. oz.  
• **Holiday Set Exclusive! Acupressure Wand**  
Lightly massage T-shaped end of wand upward to enhance absorption of serum and cream.

**213-807**  
reg. \$106  
**\$35**  
3-piece set



# winter DELIGHTS

## Avon Senses Strawberry White Hot Chocolate Winter Bath Collection

An indulgent treat for your winter body care routine. Soften your skin all over while you enjoy the fresh and fruity scent of luscious strawberries with the silky sweetness of decadent white chocolate.



### Body Lotion

Smooths and softens with moisture-rich shea butter and vitamin E. 8 fl. oz.  
**150-320 reg. \$17**  
**\$10.99**

### Bubble Bath

Sweet and refreshing, delicious bubbles. 16.2 fl. oz.  
**150-373 reg. \$11**  
**\$7.99**

### Candle

One wick. Soy-wax blend. 3" diam. x 3 1/2" H. Burn time, 40 hours. 7 oz. net wt.  
**150-392 reg. \$18**  
**\$12.99**

### Hair & Body Mist

With aloe vera extract, leaves hair and skin feeling refreshed. 8 fl. oz.  
**150-369 reg. \$18**  
**\$10.99**

NEW! LIMITED EDITION

# YOUR GIFT is served



**Daily Moments  
Vegan Hand Cream  
Holiday Set**

Includes three  
of your favorites.

• **Midnight Street**

A sensual fragrance infused  
with luscious fruit notes.

• **Sunset Rooftop**

A cool fragrance infused  
with a touch of sweetness.

• **Morning Florist**

A floral fragrance featuring  
fresh rose blooms.

Each, 1.0 fl. oz.

Comes in gift box.

217-817 reg. \$9.99

**\$6.99**

**3-piece set**



great  
stocking  
stuffers!

**Bath Bomb Ornament**  
Hang 'em on your Christmas tree. Then run 'em under water in your tub and unwind with warm winter scents!  
Each, 1.6 fl. oz. **reg. \$10**  
**\$8 each**

**Star**  
(Coconut Milk)  
**150-426**

**Christmas Tree**  
(Brown Sugar)  
**150-411**



**Mini-Size  
Holiday Hand Cream**  
Can't decide? Get them both!  
Each, 1.7 fl. oz. **reg. \$3**  
**\$2.49 each**

**Skin So Soft  
Pear and Freesia**  
**217-200**

**Moisture Therapy  
Soothing and Hydrating**  
Fragrance-free.  
**217-750**

## ANEW ULTIMATE / ANEW PLATINUM

### A. Anew Ultimate Multi-Performance Eye System

Visibly smooths crow's-feet and de-puffs under-eye bags. Cream, .5 oz. net wt. Elixir, .09 oz. net wt.  
**854-433 reg. \$42**  
**\$24.99**

### B. Anew Ultimate Multi-Performance Day Cream Broad Spectrum SPF 25

You'll see wrinkles fade and youthful vibrance return. 1.7 oz. net wt.  
**763-307 reg. \$42**  
**\$24.99**

### C. Anew Ultimate Night Repair Serum

With peptides, licorice, hyaluronic acid and niacinamide. Diminishes the appearance of fine lines and visibly improves skin tone and texture. Use PM before moisturizer.  
 1 fl. oz. **625-355 reg. \$45**  
**\$26.99**

### D. Anew Ultimate Multi-Performance Night Cream

It works while you sleep to revive and recreate the look of youthful skin. 1.7 oz. net wt. **763-311 reg. \$42**  
**\$24.99**

### E. Anew Ultimate Supreme Eye Balm

Infused with squalane, sunflower seed oil and antioxidant vitamin E. Moisturizing formula. Wear alone or under makeup. 0.1 oz. net wt.  
**625-340 reg. \$45**  
**\$26.99**



### Anew Ultimate Supreme Dual Elixir

Follow with Advanced Performance Crème. Serum/Oil, .67 fl. oz. each.

**588-421 reg. \$60**

### Anew Ultimate Supreme Advanced Performance Crème

With Black Pearl Extract. See a dramatic difference in deep wrinkles and skin radiance. 1.7 oz. net wt.

**014-735 reg. \$60**

**\$38.99 each**



### ANEW Ultimate Regimen Set

Includes three full-size moisturizers plus one try-it-size serum.

- **Multi-Performance Day Cream Broad Spectrum SPF 25**  
1.7 oz. net wt.
- **Multi-Performance Night Cream**  
1.7 oz. net wt.
- **Multi-Performance Eye System**  
Cream, .5 oz. net wt.  
Elixir, .09 oz. net wt.
- **Anew Power Serum**  
.24 fl. oz.

4-PIECE BOXED KIT  
**923-228 reg. \$128**  
**\$54.99**



### Try-It Size!

**Ultimate Multi-Performance Night Cream**  
 .5 oz. net wt.  
**626-222 reg. \$15**  
**\$8.99**



**FREE**

The Face Shop Rice Water Bright Foaming Cleanser (5 fl. oz.) with any \$25 skin care purchase, pages 56-80. **\$8 value.**

\*Sold separately on page 72. Limited quantities.



**Anew Platinum Age Delay Serum**

With niacinamide (vitamin B3) and panthenol (pro-vitamin B5), plus peptides that help visibly boost elasticity and lift facial contours for a more youthful look. Use AM and PM before moisturizer. 1 fl. oz. **625-609** reg. \$45 **\$26.99**

**NEW****Anew Platinum Sculpting Body Serum**

With niacinamide, panthenol (pro-vitamin B5) and powerful anti-aging peptides, effective anti-aging ingredients known to help boost moisture, leaving skin looking firmer, smoother and more youthful. 6.7 fl. oz. **506-249** reg. \$45 **\$26.99**

**Anew Platinum****Firm and Sculpt Cream for Neck and Chest**

With Peptide Lifting Complex. For skin on your neck and chest, vulnerable to sagging. Use PM after cleansing. 1.7 oz. net wt. **763-584** reg. \$42 **\$24.99**

**Anew Platinum Night Cream**

Skin appears smoother overnight, resculpted over time. 1.7 oz. net wt. **753-439** reg. \$42 **\$24.99**

**Anew Platinum Eye & Lip Cream**

Visibly smooths and reshapes the area around eyes...and lips, too! Dual applicator. .5 oz. net wt. **328-072** reg. \$42 **\$24.99**

**Anew Platinum****Day Cream Broad Spectrum SPF 25**

Fight gravity...or sun damage? With this cream, you can do both. 1.7 oz. net wt. **184-146** reg. \$42 **\$24.99**

**Anew Platinum Regimen Set**

Includes three full-size moisturizers plus one try-it-size serum.

- **Day Cream Broad Spectrum SPF 25**  
1.7 oz. net wt.
- **Night Cream**  
1.7 oz. net wt.
- **Eye & Lip Cream**  
.5 oz. net wt.
- **Anew Power Serum**  
.24 fl. oz.

4-PIECE BOXED KIT  
**923-467** reg. \$128 **\$54.99**

**Anew Power Serum**

Visibly improves wrinkles, radiance, firmness and texture. Use AM and PM after cleansing, as your treatment before moisturizing. 1 fl. oz. **417-187** reg. \$45 **\$26.99**



## ISA KNOX LXNEW ULTIMATE rejuvenating collection



**Isa Knox LXNEW Ultimate Rejuvenating Multi-Corrector**  
Luxurious paeonol-infused serum with niacinamide and panthenol to help visibly address key signs of aging. Skin looks smoother and more youthful. Pat into areas prone to fine lines and wrinkles before moisturizer. 1.7 fl. oz. **496-595**  
reg. \$50  
**\$34.99**

**Isa Knox LXNEW Ultimate Rejuvenating Day Cream**  
With paeonol, visibly reduces wrinkles and improves the look of elasticity, radiance and skin texture. With nutmeg to help visibly even skin tone. 1.7 fl. oz.  
**351-892**  
reg. \$50  
**\$39.99**



**Isa Knox LXNEW Ultimate Rejuvenating Serum**  
With paeonol and ceramides, visibly improves elasticity, radiance and skin texture, and reduces the appearance of wrinkles. 1.35 fl. oz.  
**756-624** reg. \$56  
**\$44.99**



**Isa Knox LXNEW Ultimate Rejuvenating Eye Serum**  
Infused with paeonol and niacinamide to help visibly reduce fine lines around the eye area and depuff under-eye bags. 1 fl. oz. **567-177**  
reg. \$50  
**\$39.99**



**Isa Knox LXNEW Ultimate Rejuvenating Multi-Balm Stick**  
With peony extract, plus a firming complex featuring castor oil, moringa and argan oil. Apply to forehead, eyes and neck, or anywhere you want extra care. .24 fl. oz.  
**267-593**  
reg. \$24  
**\$19.99**



**Isa Knox LXNEW Ultimate Rejuvenating Dual Night Cream**  
With paeonol and macadamia oil. Volume Cream: Rice bran extract helps visibly plump skin. Firming Cream: Helps boost collagen and elastin. Each, .85 fl. oz.  
**564-015**  
reg. \$50  
**\$39.99**



Innovative formulas with organic hibiscus extract help skin look lifted from every angle



**Isa Knox LXNEW Platinum Sculpting Oil Serum**

Hibiscus extract-infused serum, with rejuvenating peptides and antioxidants. Skin looks firmer and more lifted. 1.35 fl. oz. **318-720 reg. \$56 \$44.99**

**Isa Knox LXNEW Platinum Sculpting Day Cream**

Infused with moisturizing hibiscus extract and smoothing ceramide. Visibly tightens facial contours. 1.7 fl. oz. **318-845 reg. \$50 \$39.99**

**Isa Knox LXNEW Platinum Sculpting Night Cream**

With firming hibiscus extract, ceramide, squalane and shea butter. Skin looks firmer, smoother and more defined. 1.7 fl. oz. **318-850 reg. \$50 \$39.99**

**Isa Knox LXNEW Platinum Sculpting Eye Cream**

With hibiscus extract, panthenol and antioxidants. Leaves the delicate eye area looking firmer, brighter, more defined. .84 fl. oz. **318-883 reg. \$50 \$39.99**

**Isa Knox LXNEW Platinum Sculpting Neck and Chest Cream**

With hibiscus extract, ceramide, shea butter, panthenol and squalane to help vulnerable skin along the neck and chest appear firmer, smoother and lifted. 1.7 fl. oz. **548-069 reg. \$50 \$39.99**



## SKIN CARE COLLECTIONS save on all your faves

---

### ISA KNOX LXNEW SET

Isa Knox LXNEW Ultimate Rejuvenating Multi-Balm Stick  
.24 fl. oz.

Isa Knox Anew Clinical Collagen Booster Microneedling Polisher  
1.7 fl. oz.

**2-PIECE SET**  
**\$24.99**

**\$58 VALUE**

924-406



### REGIMEN EXTRAS SET

Anew Vitamin C Overnight Radiant Mask  
1.7 fl. oz.

Silicone Glove Protective Hand Cream  
3.4 fl. oz.

Anew Ultimate Supreme Eye Balm  
0.1 oz. net wt.

**3-PIECE SET**  
**\$24.99**

**\$87 VALUE**

924-349



### ISA KNOX LXNEW PLATINUM SET

Isa Knox LXNEW Platinum Sculpting Neck and Chest Cream  
1.7 fl. oz.

Isa Knox LXNEW Platinum Sculpting Day Cream  
1.7 fl. oz.

**2-PIECE SET**  
**\$34.99**

**\$100 VALUE**

924-812



**COMPLEXION PERFECTION SET**

**Rice & Ceramide Cream**

1.69 fl. oz.

**Rice & Ceramide Toner**

5 fl. oz.

**Rice & Ceramide Emulsion**

5 fl. oz.

**re:tune Inner Beauty**

**Clear Complexion\***

30 capsules.

**4-PIECE SET**  
**\$26.99**

**OVER \$61 VALUE**

**934-884**

\*This product is not intended to diagnose, treat, cure or prevent any disease.



**CLEANSE & MOISTURIZE SET**

**belif moisturizing**

**eye bomb**

.84 fl. oz.

**belif aqua bomb**

**hydrating toner**

6.75 fl. oz.

**Herb Day 365 Amino Acid**

**Cleansing Foam - Peony**

5.7 fl. oz.

**3-PIECE SET**  
**\$45.99**

**OVER \$100 VALUE**

**924-611**



**INNER & OUTER BEAUTY SET**

**Calendula Essential**

**Moisture Eye Cream**

.67 fl. oz.

**Calendula Essential**

**Moisture Serum**

.67 fl. oz.

**Nurtura**

**Replenishing Cream**

1.7 fl. oz.

**3-PIECE SET**  
**\$19.99**

**\$36 VALUE**

**924-205**



## CLINICAL Line Eraser / Collagen Booster

### Isa Knox Anew Clinical Line Eraser with Retinol Targeted Treatment

In just one week, the look of deep lines is smoothed and resurfaced. Use PM. .67 fl. oz. **729-397** reg. \$40 **\$23.99**

**Isa Knox Anew Clinical Line Eraser with Retinol Treatment**  
Great for first-time retinol users. Use AM/PM. 1 oz. net wt. **729-382** reg. \$45 **\$27.99**



### Isa Knox Anew Clinical Collagen Booster Eye Lift Pro Dual Eye System

With a peptide complex to help boost skin renewal. In one week, eye area looks lifted, firmer and tighter. Gel, .33 fl. oz. Cream, .33 fl. oz.

**729-435** reg. \$40 **\$23.99**



### Isa Knox Anew Clinical Line Eraser with Retinol [1.0%] Advanced Retinol Serum

Our highest dose of retinol. Dramatically reduces the appearance of fine lines, wrinkles and dark spots. 1 fl. oz.

**390-751** reg. \$50 **\$39.99**



**100%** showed clinical improvement of fine lines and wrinkles in one week, with increased results over time.

### Isa Knox Anew Clinical Collagen Booster Microneedling Polisher

At-home alternative to micro-dermabrasion and micro-needling procedures. Visibly diminishes pores, fine lines and wrinkles. Skin looks smoother and more radiant.

1.7 fl. oz. **798-592** reg. \$34 **\$19.99**



### Isa Knox Anew Clinical Collagen Booster Firming Cream

With peptides that boost skin renewal to help visibly firm skin and restore youthful bounce. Also infused with moisturizing and skin-plumping niacinamide and squalane. For optimal results, apply following Rejuvenating Serum Ampoules. Hygienic, airless pump. 1.7 fl. oz.

**069-327** reg. \$45 **\$27.99**



### Isa Knox Anew Clinical Collagen Booster Rejuvenating Serum Ampoules

Powerful peptide blend boosts skin renewal. 60 capsulated single-use ampoules. .008 fl. oz. each.

**803-077** reg. \$62.50 **\$49.99**



**Isa Knox Anew Clinical Revitalize & Reveal Extra Strength Retexturizing Peel**  
Results similar to a 35% pro glycolic peel.\* 30 fragrance-free pads. 2" diam.  
**729-420**  
reg. \$40  
**\$23.99**

\*In 6 out of 8 attributes tested over a 7-week period.



**Isa Knox Anew Clinical Revitalize & Reveal Resurfacing Expert Smoothing Fluid**  
79% as effective as a pro micro-dermabrasion without the same irritation.  
1 fl. oz.  
**852-282**  
reg. \$44  
**\$27.99**



**Isa Knox Anew Clinical Revitalize & Reveal Advanced Wrinkle Corrector**  
In just two weeks, wrinkles appear reduced.  
1.7 fl. oz.  
**729-401**  
reg. \$40  
**\$23.99**



**Isa Knox Anew Clinical Revitalize & Reveal Intensive Peel**  
An intensive resurfacing peel similar to pro acid peels. With AHA and PHA.  
1 fl. oz.  
**780-025**  
reg. \$45  
**\$27.99**



**Isa Knox Anew Clinical Revitalize & Reveal Resurfacing Lotion for Body**  
Exfoliates with gentle yet effective AHA lactic acid. Moisturizes with shea butter.  
5 fl. oz. **390-785** reg. \$34  
**\$19.99**

**Skinvincible Deep Recovery Cream**  
Lessens the look of age damage in weeks. Use PM.  
1 oz. net wt. **290-351**  
reg. \$40  
**\$23.99**



**Avon Solutions Nurtura Replenishing Cream**  
Adds moisture to dry skin.  
1.7 fl. oz.  
**908-263**  
reg. \$10  
**\$7.99**



**Avon Solutions Anti-Aging Cream**  
Moisturizing formula works to visibly smooth the appearance of fine lines and wrinkles.  
1.7 fl. oz. **906-681**  
reg. \$13  
**\$7.99**



**Avon Solutions Dramatic Firming Cream**  
Skin looks and feels smoother.  
1.7 fl. oz.  
**374-657**  
reg. \$10  
**\$7.99**



**Avon Solutions Banishing Cream Skin Discoloration Improver**  
Visibly improves skin tone.  
2.5 fl. oz. **463-374**  
reg. \$10  
**\$7.99**



**Avon Care Silicone Glove Protective Hand Cream**  
Lasting protection from dryness.  
3.4 fl. oz.  
**366-887**  
reg. \$6  
**\$2.69**



## ANEW VITAMIN C / ISA KNOX ANEW SOLAIRE

### Anew Vitamin C Overnight Radiant Mask

Visibly improves texture and boosts radiance. Apply after cleansing, treating and moisturizing.

1.7 fl. oz.  
157-086  
reg. \$36  
**\$19.99**



### Anew Vitamin C Warming Peel

With vitamin C flakes and natural seeds, exfoliates with a warming sensation.

3.4 fl. oz. 936-425  
reg. \$27  
**\$15.99**



### Anew Vitamin C Brightening Serum

Skin is visibly energized and brightened with the power of 10% pure vitamin C. 1 fl. oz.

522-066  
reg. \$44  
**\$24.99**



### Anew Vitamin C Illuminating Priming Moisturizer

With natural citrus extracts. Wear alone or under makeup.

1.7 fl. oz. 868-508  
reg. \$34  
**\$18.99**

### Anew Vitamin C Brightening Eye Cream

Visibly reduces dark circles. Leaves under-eye area looking brighter and more even-toned.

.5 fl. oz.  
868-512 reg. \$34  
**\$18.99**

### Anew Vitamin C Antioxidant Lip Treatment

Nourishes lips with vitamins C and E.

.13 oz. net wt.  
784-547  
reg. \$14  
**\$7.99**



### Anew Vitamin C Illuminating Body Serum

Light-reflecting pigments leave skin looking luminous.

6.7 fl. oz. 157-071  
reg. \$34  
**\$19.99**





### Anew Vitamin C Nourishing Body Butter

With hydrating shea butter and sodium PCA, enriched with niacinamide, helps restore radiance with vitamins C and E to defend against free radical damage.

Uplifting fruity-floral and citrus scent. 7.8 fl. oz.

**443-767 reg. \$32  
\$17.99**

### Anew Vitamin C Glow Body Scrub

Sugar-based formula, with pineapple and papaya enzymes, and coffee seed extract, exfoliates dry, dull skin, while a blend of sunflower seed oil and sweet almond oil replenishes moisture. Refreshing citrus scent.

9 oz. net wt.

**443-752 reg. \$36  
\$19.99**



**100%  
mineral  
sunscreen  
with no  
white cast!**

### Isa Knox Anew Solaire Everyday Mineral Face Protection Cream Broad Spectrum SPF 50

Lightweight formula with zinc oxide. Suitable for sensitive skin. Water-resistant (40 minutes).

1.7 fl. oz.  
**437-143  
reg. \$29  
\$22.99**



### Isa Knox Anew Solaire Everyday Face Protection Lotion Broad Spectrum SPF 50

Creamy lotion formula. Wear alone or under makeup. 1.7 fl. oz.

**911-400  
reg. \$29  
\$22.99**



### Isa Knox Anew Solaire Active Face & Body Protection Lotion Broad Spectrum SPF 50

Water-light formula glides on smoothly all over face and body.

2.7 fl. oz. **154-948  
reg. \$31  
\$24.99**

## HYDRA FUSION

### Anew Hydra Fusion Nighttime Facial Treatment

Visibly plumps skin. Increases moisture by 3X.

Relaxing rose scent. 1.7 oz. net wt. **139-429**

reg. \$34

**\$18.99**



### Anew Hydra Fusion Gel Cream

Skin appears smoother, refreshed and plumped

with lasting hydration. 1.7 oz. net wt. **266-893**

reg. \$34

**\$18.99**



### Anew Hydra Fusion De-Puffing Eye Serum

With caffeine and a cooling ceramic tip. Instantly boosts hydration around the eye area by 3X. Eyes look and feel refreshed. .5 fl. oz. **137-737**

reg. \$34

**\$18.99**

### Anew Hydra Fusion 1.5% Hyaluronic Acid Serum

With three different molecular sizes of HA that reach multiple layers of skin's surface to visibly plump skin.

1 fl. oz.

**290-390**

reg. \$44

**\$24.99**



### Anew Hydra Fusion Cleansing Micellar Water

Gently lifts dirt, oil and makeup while boosting hydration. No need to rinse off.

10.1 fl. oz.

**139-380**

reg. \$14

**\$8.99**





normal to dry skin

**Nourishing Cream Cleanser**  
With panthenol (vitamin B5), rosemary and soapwort extracts. Removes impurities and makeup while restoring moisture. 5 fl. oz.  
**717-990 reg. \$12**  
**\$9.99**

normal, dry and combination skin

**Balancing Gel Cleanser**  
Gel to foam. With panthenol (vitamin B5). Amino acid-based ingredients derived from coconut help remove oil and impurities while rebalancing skin. 5 fl. oz.  
**718-010 reg. \$12**  
**\$9.99**

oily to normal skin

**Soothing Whipped Oil Cleanser**  
Amino acid-based ingredients derived from coconut eliminate impurities and excess oil. With panthenol (vitamin B5) and aloe. 5 fl. oz.  
**718-025 reg. \$16**  
**\$12.99**

normal, dry, combination and oily skin

**2-in-1 Exfoliating Cleansing Balm**  
Melts away makeup and impurities. With panthenol (vitamin B5) and bamboo stem powder. Spatula included. 3.5 oz. net wt.  
**718-006 reg. \$30**  
**\$24.99**

**Cleansing Brush**  
Includes one brush head. Requires two AA batteries (not included).  
**679-266**  
reg. \$47  
**\$28.99**



## FARM RX formulated with natural ingredients

**NEW**

### Farm Rx Pineapple Plus Radiance Boosting Mask

With natural alpha hydroxy acid, plus an antioxidant-rich fruit complex to help skin look smoother and more radiant.

3 fl. oz.

456-266 reg. \$37  
**\$27.99**

### Farm Rx Pineapple Plus Instant Glow Toner

Revitalizing toner helps visibly minimize pores. Use AM and PM, after cleansing.

5 fl. oz. 027-382

reg. \$25  
**\$17.99**

### Farm Rx Pineapple Plus Brightening Jelly Serum

Helps improve dull, dry skin and reduce the appearance of fine lines, wrinkles and pores. Skin looks radiant.

1 fl. oz. 027-440 reg. \$44

**\$32.99**



96%  
natural

87%  
natural

89%  
natural

### Farm Rx Amazon Berry Boost Moisturizing & Firming Mask

Ultra-moisturizing face mask with acai berry, Brazil nut oil plus murumuru and cupuaçu butters. Helps skin look firmer, smoother and tighter.

3 fl. oz. 413-052

reg. \$37  
**\$27.99**

85%  
natural



### Farm Rx Amazon Berry Boost Smoothing & Firming Body Cream

With moisturizing and nourishing Brazil nut oil plus murumuru and cupuaçu butters. 5 fl. oz.

027-655  
reg. \$25  
**\$17.99**

86%  
natural



**Farm Rx Super Greens  
Multivitamin Moisture Cream**  
Locks in essential nourishing moisture. Use daily after cleansing, serums and treatments. 3.04 fl. oz. **314-141 reg. \$37**  
**\$27.99**

**Farm Rx Super Greens  
Cooling Gel**  
Lightweight moisturizer helps soothe and cool skin. Apply a thicker layer, after serum, as a mask to hydrate overnight as needed. 3.04 fl. oz.  
**354-227 reg. \$37**  
**\$27.99**

**Farm Rx Super Greens  
Nourishing Cleansing Balm**  
Helps boost moisture barrier as it dissolves makeup and impurities. For normal, dry, combination, oily and sensitive skin types. 3.3 fl. oz. **516-944 reg. \$41**  
**\$30.99**

**Farm Rx Super Greens  
Refreshing Gel Cleanser**  
With soothing aloe. Convenient pump. Eco-friendly packaging and glass bottle. Use AM/PM. 8.11 fl. oz. **913-049 reg. \$25**  
**\$17.99**

**Farm Rx Super Greens  
Refreshing Gel Cleanser Refill\***  
Includes two refills. 16.9 fl. oz. **913-053 reg. \$37**  
**\$27.99**  
\*Not shown.

**Farm Rx Super Greens  
Refreshing Eye Cream**  
With nourishing Super Greens formula, plus cucumber extract. Hydrates and helps skin feel soothed. Green tea helps visibly de-puff. 1 fl. oz. **412-826 reg. \$31**  
**\$22.99**



**NEW**

**Farm Rx  
Super Greens  
Trial Kit**  
Includes two try-it sizes:  
• Cooling Gel, 1.7 fl. oz.  
• Multivitamin Moisture Cream, 1.7 fl. oz.  
**496-270 reg. \$25**  
**\$17.99**





**Farm Rx Green Goddess Cream**  
100mg CBD. Helps soothe and visibly reduce redness. Use AM/PM after serum. For added radiance, follow with Facial Oil. 3.04 fl. oz. **338-027** reg. \$44 **\$32.99**

**Farm Rx Green Goddess High Dose Serum**  
300mg CBD. Skin feels softer and soothed. Use AM/PM after cleansing, before CBD cream or facial oil to visibly boost results. 1 fl. oz. **338-031** reg. \$50 **\$37.99**

**Farm Rx Green Goddess Facial Oil**  
100mg broad spectrum CBD. Suitable for sensitive skin. Rich in omega acids and vitamin E. Use AM/PM, after cleansing and serum. Fragrance-free. 1 fl. oz. **934-733** reg. \$50 **\$32.99**

**Farm Rx Bakuchiol Serum**  
Concentrated lightweight oil-textured formula penetrates skin's surface to target fine lines, wrinkles and dullness without irritation. 1 fl. oz. **247-417** reg. \$44 **\$32.99**



98% natural

**Farm Rx Bakuchiol Eye Cream**  
Visibly reduces dark circles, fine lines and wrinkles without irritating the delicate eye area. 1 fl. oz. **565-834** reg. \$37 **\$27.99**



90% natural

**Farm Rx Bakuchiol Cream**  
Moisturizing cream with bakuchiol, a plant-based alternative to retinol that you can use during the day. Visibly reduces wrinkles. Vegan. Hypoallergenic. Suitable for sensitive skin. 3.04 fl. oz. **004-044** reg. \$44 **\$32.99**



92% natural

## THE FACE SHOP Jeju Aloe

### Jeju Aloe Refreshing Face Mask

With soothing aloe, helps hydrate and nourish dry winter skin. Single-use mask.

1.01 fl. oz. **069-480**

reg. \$3  
**\$2.50**



### Jeju Aloe Fresh Soothing Foam Cleanser

Gentle gel-to-foam formula hydrates as it cleanses. With soothing aloe, moisturizing panthenol and other refreshing herbal extracts such as cica, camellia leaf, licorice root and rosemary. 5 fl. oz.

**450-090**  
reg. \$11.99  
**\$9.99**



### Jeju Aloe Fresh Soothing Gel

With 95% aloe vera extract, instantly hydrates and soothes dry, sensitive skin. Infused with other soothing herbal extracts, like chamomile, lemon balm, rosemary and lavender. For face and body. 10.1 fl. oz.

**984-304** reg. \$8  
**\$6.99**



### Jeju Aloe Fresh Ice Soothing Gel

3-in-1 gel with aloe vera extract. Use as moisturizer, soothing after-sun care or facial pack.

Refrigerate for enhanced cooling. Apply to dry, sensitive, irritated areas of face and body.

10.1 fl. oz. **925-402**  
reg. \$11

**\$8.99**



**NEW**

### Jeju Aloe Body Wash

Helps moisturize dry skin while it cleanses, leaving skin feeling nourished. Light aloe scent.

13.5 fl. oz. **069-509**  
reg. \$12  
**\$8.99**

**NEW**

### Jeju Aloe Hand & Body Lotion

With aloe vera extract, known to calm and soothe irritated skin and dry hands. Clinically proven to help dry skin feel nourished for 48 hours.

13.5 fl. oz. **069-441** reg. \$12  
**\$8.99**

# THE FACE SHOP Rice Water Bright

## Rice Water Bright Light Facial Cleansing Oil

Removes every trace of makeup and gently cleanses impurities on skin. With jojoba oil and rice water extract, known to visibly brighten and moisturize skin. 5 fl. oz.

**720-199**  
reg. \$14  
**\$11.99**

## Rice Water Bright Facial Cleansing Lotion

Rice bran oil helps brighten skin. Gently removes makeup and impurities. 6.76 fl. oz.

**720-184**  
reg. \$12  
**\$9.99**



## Rice Water Bright Facial Massage Cream

With rice water, enriched with vitamins, ceramide and minerals. Use after cleansing 2-3 times a week.

6.7 fl. oz. **450-200**  
reg. \$24  
**\$19**



## Smaller Size! Rice Water Bright Foaming Cleanser

Same formula as the 10 fl. oz. Rice Water Bright Foaming Cleanser in a more convenient size for your medicine cabinet.

5 fl. oz. **478-479**  
reg. \$8  
**\$6.49**



## Rice Water Bright Mild Cleansing Water

Removes makeup and impurities with micelles, so no need to rinse off! Use with cotton pad.

16.9 fl. oz. **288-360**  
reg. \$14.40  
**\$12**



## A. Rice Water Bright Foaming Cleanser

Light whipped foam leaves skin feeling cleansed and refreshed. With rice water and soapwort extract. Skin looks clear and bright.

10 fl. oz. **508-093**  
reg. \$13  
**\$11**

## B. Rice Water Bright Rice Bran Gentle Exfoliating Cleanser

Daily scrub with organic rice bran powder, rice bran oil and hydrated silica. 10 fl. oz. **376-865**

reg. \$15.99  
**\$12.99**

## C. Rice Water Bright Cleansing Facial Wipes

Great on the go. With rice extract to moisturize while cleansing. Removes eye makeup. 50 sheets.

**508-108**  
reg. \$11  
**\$9**







**Toner**  
Balancing.  
AM/PM, use  
after cleansing,  
before serum and  
moisturizer.  
5 fl. oz. **124-142**  
reg. \$8.25  
**\$6.80**

**Emulsion**  
Replenishing.  
Semi-liquid.  
AM/PM, after  
cleansing or toning,  
before serum,  
moisturizer.  
5 fl. oz. **876-976**  
reg. \$8.25  
**\$6.80**

**Cream**  
Moisturizing.  
AM/PM, after  
cleansing, toning  
and serum.  
1.69 fl. oz. **124-635**  
reg. \$9.25  
**\$7.60**

**Rice & Ceramide Trial Kit**  
Moisturizing skin care set replenishes  
and refreshes your look. Try all three, or  
to use as a complete travel kit. Three-  
piece boxed mini sizes. Includes:  
Toner, 1.15 fl. oz.;  
Emulsion, 1.15 fl. oz.;  
Cream, 0.34 fl. oz.  
**543-617 reg. \$8.75**  
**\$7.20 the kit**



## THE FACE SHOP Herb Day cleansers

### Herb Day 365 Amino Acid Facial Foaming Cleanser

Vegan mild hypoallergenic cleanser with cica. Formulated for optimal pH balance. For a moisturized and comforted feeling without tightness, even after cleansing. Each, 5.7 fl. oz. reg. \$11.50  
**\$9.60 each**

#### Peony

Helps visibly boost skin clarity, and helps hydrate and soothe skin.  
**546-229**

#### Aloe

Helps moisturize and soothe dry, itchy skin.  
**544-393**



### Herb Day 365 Master Blending Facial Foaming Cleanser - Mung Bean & Mugwort

For trouble-prone skin. Formulated with naturally derived herbal and fruit extracts, and coconut-derived moisturizing ingredients. Free of synthetic colorants and parabens. 5.7 fl. oz. **135-093**  
reg. \$5.25  
**\$4.40**



### Herb Day Cleansing Tissue

Removes makeup and impurities. With soapwort, lady's mantle, lily, chamomile and cornflower.

20 sheets. **280-670**  
reg. \$2  
**\$1.60**

70 sheets. **134-450**  
reg. \$5.75  
**\$4.80**





**Calendula Essential Moisture**  
Daily skin care for irritated and sensitive skin. With moisturizing calendula extract, a soothing herb complex, and the ultimate hydrator, hyaluronic acid.

**A. Serum**  
A moisturizing and soothing serum that helps calm skin and enhance hydration.  
1.35 fl. oz. **980-533**  
reg. \$13.50  
**\$11.20**

**B. Eye Cream**  
A lightweight, non-greasy, moisturizing and soothing eye cream.  
.67 fl. oz. **409-823**  
reg. \$12.50  
**\$10.40**

**C. Cream**  
A moisturizing cream that instantly hydrates while it gently helps soothe dry, itchy, irritated skin. 1.69 fl. oz.  
**465-400** reg. \$13.50  
**\$11.20**



**The Face Shop Rich Hand V Special Care Hand Mask**

Coated masks contain nourishing lotion with sunflower seed oil and urea for instant moisturization. Two disposable masks, one for each hand.

541-724 reg. \$4

**\$3**



**The Face Shop Smile Foot Mask**

Disposable foot mask with naturally moisturizing urea, shea butter and collagen for baby-soft feet! Refreshes with peppermint oil. Contains two masks, one for each foot.

535-957 reg. \$4.79

**\$3.99**



## Give your hands a moment of scented bliss



### Daily Moment Vegan Hand Cream

Deeply moisturizing daily vegan hand cream with a long-lasting scent. Eco-friendly and vegan-certified. Each, 1.0 fl. oz. reg. \$4  
**\$3.29 each**

**1—Sunrise Bedroom**  
 Bergamot, lavender and cedarwood.  
**741-940**

**2—Morning Florist**  
 Lemon, Bulgarian rose and violet leaf.  
**741-955**

**3—Noon Park**  
 Grapefruit, hyacinth and iris.  
**754-636**

**4—Sunset Rooftop**  
 Pear, rose and patchouli.  
**757-931**

**5—Midnight Street**  
 Cassis, rose and amber.  
**762-334**

**6—Dawn Attic**  
 Orange blossom, pimento and vetiver.  
**762-353**



**explosive hydration...  
all over!**



**BELIEVE IT!**

# 3 steps in 1

**balm → cream → oil**

melts away makeup and impurities  
while cleansing skin with hydration

## **aqua bomb makeup removing cleansing balm**

*For dryness, dullness  
& uneven texture*

Gently removes all traces of  
makeup in one step. Smooth and  
refreshing like sherbet. With lotus  
flower and marshmallow root, herbs  
known to help boost moisture and  
radiance. No oily residue. For a  
double cleanse, follow with  
aqua bomb jelly cleanser. 3.3 fl. oz.

**443-179 reg. \$46**

**\$38**

**BELIF** believe in truth for your skin



**aqua bomb hydrating body moisturizer**

*For dryness, dullness & uneven skin tone*

A favorite lightweight gel moisturizer with lady's mantle, an herb known for its antioxidant and soothing benefits—now for your body. Intense hydration for visibly firmer, clearer and brighter skin. Silky finish. For all skin types, 10.13 fl. oz.

**443-040 reg. \$36 \$30**

**BELIEVE IT!**

**93%**

**of people agreed skin appears smoother\***

\*Based on a clinical study.



**the true cream aqua bomb**

*For dryness, dullness & uneven texture*  
Water-based refreshing gel-cream cools and hydrates. (Full size not available.)  
Try-it size, .84 fl. oz.  
**235-713 reg. \$24 \$22**



**the true cream moisturizing bomb**

*For dryness, loss of elasticity & firmness*  
Creamy, cushiony, whipped texture, envelops skin with intense moisture.  
Full size, 1.68 fl. oz.  
**948-463 reg. \$42 \$38**  
Try-it size, .84 fl. oz. (not shown)  
**498-139 reg. \$24 \$22**



**the true cream aqua bomb aloe**

*For redness, irritation & dryness*  
Moisturizing gel-cream with aloe vera extract to instantly soothe skin, plus hydrating hyaluronic acid and soothing vitamin E.  
1.69 fl. oz.  
**788-284 reg. \$42 \$38**



**BELIEVE IT!**

**96%**  
of people said their skin felt hydrated after cleansing\*

**aqua bomb jelly cleanser**

*For dryness, dullness & uneven texture*

Jelly to foam. Amino acids and glycerin-based cleansing agents gently cleanse.

5.41 fl. oz. **445-353 reg. \$35 \$30**

\*Based on a clinical study.

**aqua bomb hydrating toner**

*For an extra boost of hydration*

Lightweight water-based toner with hyaluronic acid, honeysuckle flower extract and baobab tree seed extract. Leaves skin looking soft and smooth with a healthy-looking glow. Use after cleansing, before serum and moisturizer.

6.75 fl. oz. **952-974 reg. \$36 \$30**



**moisturizing eye bomb**

*For dryness, loss of elasticity & firmness*

Lightweight, refreshing eye cream cools on contact. Helps keep eye area looking firm, resilient and smooth.

.84 fl. oz. **445-478 reg. \$53 \$48**



**aqua bomb sleeping mask**

*For dull, dry, fatigued skin*

Unique jelly-pudding texture!

Skin feels replenished overnight. Explosive hydration for smoother skin and a healthy glow.

2.53 oz. net wt. **514-717 reg. \$42 \$38**



**Mission Luxereve Cream**

Perfect for dry skin.

With luxurious oils and other moisturizing ingredients for a more youthful, sculpted appearance. Use AM/PM, after Mission Luxereve Serum. In AM, follow with sunscreen.

1.76 oz. net wt. **635-740 reg. \$350 \$280**



**Mission Luxereve Lotion**

Lightweight hydration ideal for normal skin.

Improves the appearance of elasticity and firmness, and helps even tone and texture. Use AM/PM, after Serum. In AM, follow with sunscreen.

3.77 oz. net wt. **713-459 reg. \$95 \$80**



**Mission Luxereve Serum**

Deluxe regenerating serum

formulated to help boost skin elasticity and firmness. Use AM/PM, before moisturizing with Cream or Lotion.

1.01 fl. oz. **635-754 reg. \$225 \$180**





## re:TUNE INNER BEAUTY feel good inside, look great outside

### re:tune Inner Beauty Clear Complexion

Supports a visibly clear, even complexion. Helps balance the gut microbiome.\* 30 capsules. **123-332** reg. \$36

**BUY 1  
GET 1  
FREE\*\***



### re:tune Inner Beauty Metabolism Boost

A natural, plant-based energy and metabolism booster that helps you burn more calories.\*\* 60 vegetarian capsules. **907-195** reg. \$35

**BUY 1  
GET 1  
FREE\*\***



### re:tune Inner Beauty HydraBoost

Helps boost hydration and visibly soften lines with hyaluronic acid.\* 30 vegetarian capsules. **122-761** reg. \$34

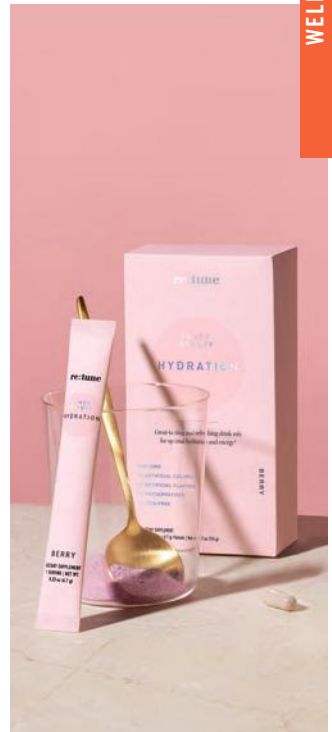
**BUY 1  
GET 1  
FREE\*\***



### re:tune Inner Beauty Youth Boost

With ingredients that help improve the clarity and hydration of skin while boosting antioxidant levels to help skin better defend itself from the look of aging.\* 60 tablets. **456-137** reg. \$34

**BUY 1  
GET 1  
FREE\*\***



### re:tune Inner Beauty Hydration

Supercharge your water for optimal hydration and more energy, and to boost skin health. Contains electrolytes, B vitamins and antioxidants.\* Berry flavor. 20 packets. **966-140** reg. \$27

**BUY 1 GET 1 FREE\*\***

### re:tune Inner Beauty Hair, Skin & Nail Health

Promotes a healthy response to skin stressors while helping build healthy hair, skin and nails.\* 60 tablets. **396-908** reg. \$42

**BUY 1  
GET 1  
FREE\*\***



### re:tune Inner Beauty Hunger Block

Helps reduce your food cravings for hours.\* 60 vegetarian capsules. **906-920** reg. \$31

**BUY 1  
GET 1  
FREE\*\***



### re:tune Inner Beauty Plant Protein Powder††

Non-GMO. Probiotics, enzymes for easy digestion.\* Vegan, gluten-free, soy-free, no sugar added. 15 servings. Creamy Vanilla **332-473** reg. \$49 **\$39**

Not included in BUY 1 GET 1 FREE offer.

††Not sold in California



\*These statements have not been evaluated by the Food and Drug Administration. This product is not intended to diagnose, treat, cure or prevent any disease. †With reduced dietary intake and exercise.

**BUY 1 GET 1 FREE** \*\*on select re:tune products on page 81. Same product only. Limited quantities.



# avon pure essential oils

Boost your well-being. Enhance your mood.

**Avon Pure  
Essential  
Oils  
Eucalyptus**  
Refreshes  
the mind.  
Rejuvenates  
the senses.  
Use with either  
Avon Pure  
Diffuser.  
Not for use  
on skin.  
.34 fl. oz.  
**098-724**  
reg. \$21  
**\$17**





**Avon Pure Ceramic Aroma Diffuser**

Premium ceramic. Whisper-quiet. Also functions as a humidifier. BPA-free plastic water reservoir. Auto shutdown on timer or when the water runs out. 6.8 fl. oz. capacity. Approx. 3<sup>3</sup>/<sub>4</sub>" diam. x 6<sup>3</sup>/<sub>4</sub>" H. **141-846**  
reg. \$71  
**\$57**



**Avon Pure Diffuser**

LED light-up diffuser with three different settings releases a fine mist of essential oil and water into the air so that you can easily fill your space with the essence of the oils. 6<sup>1</sup>/<sub>2</sub>" H. USB connection. **915-424**  
reg. \$39  
**\$32**



**Avon Pure Essential Oil Case**

Fits up to 48 essential oils and roll-ons. Man-made material with easy maintenance. Two padded stackable trays for added protection of glass bottles. Includes handle and all-around zipper. 8<sup>1</sup>/<sub>4</sub>" L x 6<sup>1</sup>/<sub>8</sub>" W x 7<sup>1</sup>/<sub>2</sub>" H. **179-470**  
reg. \$51  
**\$41**



**Avon Pure Roll-On Essential Oils De-Stress**

With lavender and peppermint. Apply directly on skin to instantly transform your day. Contains sweet almond oil, a carrier oil. .34 fl. oz. **098-963**  
reg. \$24  
**\$19**

**EYE SPY  
A DEAL!  
SAVE UP  
TO 30%**

PAGES 84-91

## GLIMMER LINERS

Easy-glide, quick-dry  
precision felt-tip liner  
delivers rich color  
with long-lasting wear.

### fmg Glimmer Liquid Eyeliner

Matte finish. Removes  
with ease using soap and  
water or makeup remover.  
Transfer-, sweat- and  
waterproof. .037 fl. oz.

**Blackest Black 354-380**

reg. \$12  
**\$8.99**



Unique cap with  
built-in sharpener!

### fmg Glimmer Always On Point Eyeliner\*

Smudge- and  
waterproof. Creamy,  
smooth formula stays  
color-true all day.  
Free from parabens,  
sulfates and talc.

.01 oz. net wt.

reg. \$9  
**\$6.79**



Black  
016-389

Black Brown  
016-446

Black  
016-389

Long-wearing liners for  
eyes, lips and brows.

### fmg Glimmer Liner\*

Retractable. Each, .01 oz. net wt.  
reg. \$9

**LOWEST  
PRICE  
EVER!  
\$2.99  
EACH**



Enjoy special prices and offers with an Avon account or Representative.

\*Packaging may vary.



						
<b>DIAMOND</b> Teal Sparkle 331-606	<b>DIAMOND</b> Purple Rain 332-071	<b>DIAMOND</b> Sugar Plum 331-625	<b>DIAMOND</b> Brown Sugar 331-568	<b>DIAMOND</b> Black Ice 331-610	<b>DIAMOND</b> Sterling 331-960	<b>DIAMOND</b> Olive 331-940
						
<b>DIAMOND</b> Smoky Diamond 331-280	<b>DIAMOND</b> Twilight Sparkle 331-553	<b>CREAM</b> Cosmic Brown 334-351	<b>CREAM</b> Blackest Black 334-366	<b>CREAM</b> Saturn Grey 334-328	<b>CREAM</b> Emerald Green 334-332	<b>CREAM</b> Majestic Plum 334-313
						
<b>CREAM</b> Starry Night 334-347	<b>WATERPROOF</b> Blackest Night 332-143	<b>WATERPROOF</b> Smoky Grey 332-162	<b>WATERPROOF</b> Raisin 332-200	<b>WATERPROOF</b> Midnight Blue 332-158	<b>WATERPROOF</b> Blue Skies 334-237	<b>WATERPROOF</b> Seafoam Green 334-241
						
<b>BROW</b> Brunette 331-242	<b>BROW</b> Dark Brown 331-147	<b>BROW</b> Light Brown 331-151	<b>BROW</b> Tawny 331-128	<b>BROW</b> Blonde 331-113	<b>BROW</b> Light Blonde 331-109	<b>WATERPROOF</b> Brown Chocolate 332-124
						
<b>LIP</b> Merlot 330-284	<b>LIP</b> Pink Bouquet 330-356	<b>LIP</b> Candy Apple 327-903	<b>LIP</b> Passion Red 327-650	<b>LIP</b> Lava Red 327-740	<b>LIP</b> Honey Peach 327-721	<b>LIP</b> Mystery Mauve 330-318
						
<b>LIP</b> Red Brick 330-451	<b>LIP</b> Perfect Plum 330-887	<b>LIP</b> Chocolate 330-667	<b>LIP</b> Simply Spice 330-614	<b>LIP</b> Au Naturel 330-318		

**Available in**  
**Diamond Eyeliner:** Subtle sparkle.  
**Cream Eyeliner:** Soft sheen finish.  
**Waterproof Eyeliner:** Smudge- and waterproof.  
**Lipliner:** Prevents feathering.  
**Brow Definer:** For natural-looking brows.

# GLIMMER SHADOW



**MATTE Tigress**  
741-333



**MATTE Icon**  
741-439



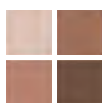
**MATTE Bombshell**  
741-170



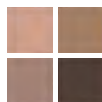
**MATTE Calypso**  
741-261



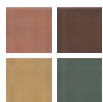
**MULTI Tempress**  
884-731



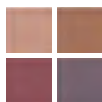
**MULTI Idol**  
900-975



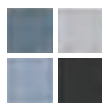
**MULTI Maven**  
884-750



**MULTI Siren**  
901-493



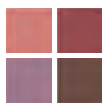
**MULTI Mistress**  
883-902



**MULTI Vixen**  
901-474



**MULTI Minx**  
885-738



**MULTI Darling**  
880-789



**MULTI Goddess**  
901-330



**MULTI Muse**  
880-459

For Multi Quad finishes, visit Avon.com.

Color-coordinated shades work together for expressive eye looks that last all day.

## fmg Glimmer Eyeshadow Quad

Creamy soft powder formula hugs lids with rich color for all-day wear without the fallout. Free from parabens and fragrance. Available in Multi or All Matte. .21 oz. total net wt. **reg. \$15**

**\$10.99**



**MATTE Tigress**  
741-333



Available in Matte Sateen, Shimmer or Glitter. Packaging may vary.

Vivid stay-all-day shimmery color.

SHIMMER Pink Topaz 479-150

## fmg Glimmershadow Liquid Eyeshadow

Long-wearing, no-smudge, no-crease, buildable formula with no messy fallout. Ultrafine pearl finish. Water-resistant. Paraben-, phthalate- and sulfate-free. .07 fl. oz.

**reg. \$12**

**\$7.99**



**MATTE SATEEN Citrine**  
451-120



**MATTE SATEEN Pink Sapphire**  
448-591



**MATTE SATEEN Tiger's Eye**  
500-585



**MATTE SATEEN Jasper**  
500-566



**SHIMMER Rose Gold**  
469-095



**SHIMMER Bronze Age**  
469-100



**SHIMMER Crystal Lilac**  
479-040



**SHIMMER Pink Topaz**  
479-150



**GLITTER Diamond Dust**  
478-866



**GLITTER Ultramarine**  
469-042



**GLITTER Fool's Gold**  
469-076



**GLITTER Peach Sapphire**  
469-057



## GLIMMER MASCARA



Long and healthy.

**fmg Glimmer  
SuperExtend  
Nourishing Mascara**  
Enriched with vitamin  
E and argan and  
coconut oils. Won't  
clump, smudge or  
flake off. .237 fl. oz.  
**Brown Black 698-852**  
**Black 698-848**  
reg. \$11  
**\$8.99**



Super volume.

**fmg Glimmer  
SuperShock  
Volumizing  
Mascara**  
Instant high-  
gloss lushness.  
.338 fl. oz.  
**Black 698-829**  
reg. \$11  
**\$8.99**



Waterproof  
volume.

**fmg Glimmer  
Wash-Off  
Waterproof  
Mascara**  
Washes off easily  
with soap and  
water. .21 oz.  
net wt.  
**Black 723-107**  
reg. \$10  
**\$7.99**





## CATHYCAT

Matte shadow  
stick colors  
and defines for  
all-day play.

**fmg CathyCat  
Shadow Gaze  
Matte Color Stick**

Comfortable,  
long-wearing  
formula provides  
the perfect amount  
of playtime for  
blending and  
building color  
intensity. Once  
the shade sets, it  
will not budge or  
smudge. .0476 oz.  
net wt. **reg. \$17**

**\$11.49**

Aubergine  
786-960

# CathyCat

Create eyes that captivate—shrouded in  
mystery and exuding seduction—purrfect  
for any occasion and all nine lives!



Buff  
956-912      Rosewood  
958-547



Taupe  
958-126      Espresso  
958-896



Azure  
959-213      Mauve  
958-331



Berry  
958-619      Blush  
958-638



Moss  
786-540



Aubergine  
786-960



PeriWink  
787-053



Smokeshow  
787-068



# CATHYCAT

Create a sultry cat-eye look with this rich, long-wearing liquid liner.

**fmg CathyCat Nine Lives Precision Liquid Eyeliner**

Slim-tip brush delivers a precise line of waterproof and sweat-proof color that will not skip, tug or smudge. .068 fl. oz.

**Blackest Black**  
**800-829**  
 reg. \$18  
**\$12.49**



Perfectly designed false lashes add length, dimension and volume.

**fmg CathyCat LushLashes**

Vegan. Includes one pair of false lashes and glue. Available in two flirty styles! reg. \$11  
**\$7.99 each**



Soft & Sultry  
 959-304

Fierce & Flared  
 960-050

No-budge, water-resistant lashes, from dawn to dusk.

**fmg CathyCat Play All Day Mascara**

Long-wearing mascara coats each lash with rich pigments that will not budge or smudge for nine lives of perfect wear. Nourishing formula with a blend of conditioning coconut and argan oils and lash-supporting panthenol. Removes easily with soap and water. .28 oz. net wt.

**Blackest Black**  
**904-712**  
 reg. \$17  
**\$12.49**



Lengthen, curl and captivate!

**fmg CathyCat Curl & Flare Mascara**

Long-lasting mascara applies evenly. Uniquely curved brush provides major lift, extraordinary curl and impressive length. Nourishing formula with a blend of conditioning coconut and argan oils and lash-supporting panthenol. .28 oz. net wt.

**Blackest Black**  
**901-269**  
 reg. \$17  
**\$12.49**



Take your brow game to new heights!

**fmg CathyCat High Arch Precision Brow Pencil**

Long-wearing cream-to-powder pencil glides on smoothly, creating a well-defined look. Waterproof formula stays in place without budging or smudging for perfectly gorgeous brows. .01 oz. net wt. reg. \$15

**\$9.99**



Blonde 837-423    Light Brown 837-438    Ash Brown 837-610



Brown 837-442    Dark Brown 837-605    Black Brown 837-639



## BROWS + LASHES



Ultrafine felt tip sculpts, fills and shapes brows and enhances your look to perfection.

Espresso Martini  
860-420

### TPSY Snatched Brow & Freckle Marker

Long-wearing formula. Free from parabens and talc.

.01 oz. net wt. reg. \$15

**\$9.99**



Espresso Martini  
860-420



Irish Cream  
549-228



Spiked Macchiato  
860-416



Universal clear shade for a professional sculpted look.

### fmg Colors of LOVE

#### Hi-Brow Sculpting Brow Gel

Flexible, flake-proof formula. With moisturizing aloe and nourishing hyaluronic acid. Soft matte finish. Tapered micro-brush ensures precise application. Wear alone or over your favorite brow products. Free from parabens, phthalates and fragrance. .11 fl. oz.

#### Universal Love (Clear)

536-695

reg. \$17

**\$11.79**



Amp up brows with a sweep of tinted gel for a full, fluffy look.

### fmg Colors of LOVE

#### Hi-Brow Tinted Brow Gel

Water-resistant, smudge- and flake-proof formula fills, grooms and shapes for 24-hour wear. With heart-shaped fibers, clay and vitamin E. Soft matte finish. Tapered micro-brush. .11 fl. oz. reg. \$17

**\$11.79**



Blonde  
792-499



Soft Brown  
792-522



Medium Brown  
792-537



Brown Black  
792-556



Volumizing and lengthening heart-shaped fibers + intense black pigments.

### fmg LOVE at 1st Lash Mascara

Love Complex™ with lycopene, olive oil and vitamin E. Transfer-resistant. Clump-, flake- and smudge-proof. .3 fl. oz.

#### Blackest Black 698-670

reg. \$15

**\$10.49**



Lash-hugging heart-, flower- and cylinder-shaped lengthening fibers for voluminous, waterproof wear.

### LOVE at 1st Lash

#### Waterproof Mascara

Love Waterproof Complex™ with Lashrez, olive oil and vitamin E. Transfer-resistant. Clump-, flake- and smudge-proof. .3 fl. oz.

#### Waterproof Blackest Black

293-805

reg. \$15

**\$10.49**

*cobra brush lifts & curls*



## CASHMERE EYE

Intense, decadent black shades with dazzling jewel undertones for dramatic results.

### fmg Cashmere 24 HR Cream Eyeliner

Comfortable kohl formula with 24-hour wear. Waterproof, matte finish. Smudge applicator to blend. Vegan. Paraben-, phthalate- and fragrance-free. .04 oz. net wt. **reg. \$18**

**\$12.99**



Nightfall  
565-451

Pitch Black  
565-447

Midnight  
566-830



Pitch Black  
565-447

Rich black pigmented formula with extreme staying power.

### fmg Cashmere Ultimate Volume Mascara

Leaves lashes feeling soft. Won't budge, smudge or transfer. Triple sphere brush hugs lashes. Removes easily. Vegan. .27 fl. oz.

**Rich Black 153-736**  
**reg. \$22**  
**\$14.99**



Smoother, brighter, flawless-looking eyes.

### fmg Cashmere Under Eye Primer

Helps concealer wear all day. Infused with caffeine, green tea extract and vegan collagen to help diminish the appearance of dark circles, puffiness and fine lines. Free from parabens, phthalates and fragrance. .317 oz. net wt.

**010-429 reg. \$22**  
**\$18**



Fills in brows as it boosts color.

### fmg Cashmere 24 Hour Brow Pomade

Smudge-proof, sweat-proof formula. Matte finish. Comes with dual-ended applicator with angled-tip brush and spoolie, 4 1/2" L. .14 oz. net wt.

**reg. \$24**  
**\$15.99**

Light Brown  
423-705



Blonde  
423-710

Light Brown  
423-705

Brown  
423-356

Ash Brown  
423-208

Dark Brown  
423-227

Black Brown  
423-212



Expertly curated 9-shade palettes to create an array of looks.

### fmg Cashmere Eyeshadow Palette

Long-wearing creamy powder shadows in satin, matte and sparkling finishes. Crease- and smudge-proof. Talc-, paraben- and fragrance-free. .63 oz. total net wt. **reg. \$40**

**\$27 each**



Enchanted Eyes  
401-440

Essential Eyes  
404-745
































## GLIMMER LIP

Enticing and inspiring spectrum of versatile and expressive shades.

### fmg Glimmer Satin Lipstick

Lightweight, smooth and creamy formula. Infused with antioxidant pomegranate extract. Buildable medium-to-full coverage. Soft satin finish. .10 oz. net wt.

reg. \$11  
\$8.49

		
Desert Moon 449-803	Stellar 726-550	Windstorm 883-845
		
Cyclone 890-566	Twilight 449-822	Sierra Sunset 890-805
		
Luna 895-170	Equinox 449-818	Honeyflower 726-531
		
Songbird 897-647	Aster 448-769	Poppy 897-651
		
Wild Cherry 449-708	Constellation (Shimmer) 449-731	Blaze 896-880
		
Aurora 726-584	Rose Angel 897-939	Dahlia 726-350
		
Hibiscus 898-021	Wildflower 898-040	Plum Blossom 449-765
		
Tulip 449-712	Wildrose 898-533	Eclipse 448-740
		
Violet Night 898-548	Morning Glory 449-750	Celestial 895-352

Featured shades: Dahlia, Aurora, Stellar and Honeyflower.

LIP

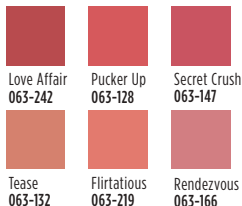
**NEW**

High shine and sheer color in one!

**fmg LOVE Lip Butter**

Ultra-creamy formula with cupuaçu seed butter, mango extract and apricot kernel and olive fruit oils leaves lips feeling soft. Buildable coverage. .09 oz. net wt. **reg. \$17**

**\$14.99**



Love Affair 063-242

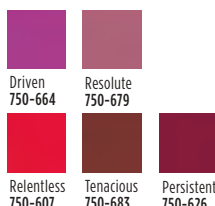


A burst of vivid color with a featherlight feel and velvety soft matte finish.

**Mattitude Liquid Lip**

Weightless, non-drying formula that lasts for hours. Poppy seed oil and vitamin E nourish lips. .13 fl. oz. **reg. \$13**

**\$10.99**



Relentless 750-607

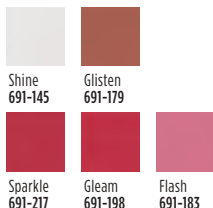


Drench lips in dimensional color and shine.

**fmg Glimmer Lip Glaze**

Non-sticky creamy formula gives hours of wear without feathering. With antioxidant vitamin E. Buildable sheer-to-medium coverage. .3 fl. oz. **reg. \$11**

**\$8.99**



Gleam 691-198



Sugar-based formula gently buffs away dry, flaky skin.

**fmg Glimmer Lip Polish**

Helps polish and prepare lips for effortless color application. Blend of vitamin E, moisturizing squalane, and extracts of blueberry, strawberry and raspberry leaves lips feeling soft and supple. .35 oz. net wt. **594-677 reg. \$14**

**\$10.99**

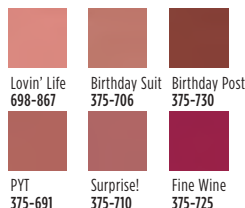


A nude pout for every party.

**fmg Glimmer Birthday Balm Lip Crayon**

Butter-soft balm with a sheer color and shine. .1 oz. net wt. **reg. \$12**

**\$10.99**



Birthday Suit 375-706



Keep your pout soft and kissable!

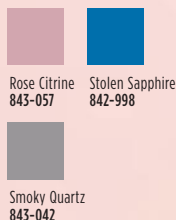
**fmg Glimmer Lip Conditioner**

With mango seed butter, vitamin E, and jojoba and sunflower seed oils. Leaves dry, cracked lips feeling soft and smooth. .12 oz. net wt. **794-578 reg. \$12**

**\$8.99**



## GLIMMER NAIL



Rose Citrine  
843-057

Stolen Sapphire  
842-998

Smoky Quartz  
843-042

# FLEX YOUR METAL

**NEW**

Mani of the moment:  
matte metallics!

### fmg Glimmer Matte-Ilic Crystals Nail Lacquer

Innovative nail lacquer combines vibrant color with a matte crystal finish. Long-wearing formula dries quickly and provides a protective shield against chipping.

Free from parabens, toluene, formaldehyde and camphor. .4 fl. oz.  
reg. \$10  
**\$7.99**

Rose  
Citrine  
843-057

Max shine and vivid color for a salon-worthy manicure that lasts!

### fmg Glimmer Nail Lacquer

Gel-like cushion texture. Nail-strengthening formula dries smooth and even for lasting wear that does not chip. No UV light needed. Free from parabens, talc, gluten, phthalates and fragrances.

.4 fl. oz.  
reg. \$10  
**\$7.99**



SATIN  
Black Hole  
Burgundy  
740-648

SATIN  
Night Sky  
Berry  
740-629

SATIN  
Supernova  
Red  
740-633

SATIN  
Lost Galaxy  
Plum  
740-614



SATIN  
Full Moon  
Flush  
740-671

SATIN  
Cool  
Comet  
740-667

SATIN  
Lunar Tan  
740-652

SATIN High  
Magnitude  
Mauve  
740-781

METALLIC  
Meteorite  
Rose  
740-800

METALLIC  
Golden  
Galaxy  
740-796



SATIN  
Night Sky  
Berry  
740-629

# GLIMMER

Get mistake-free manis at home.

## fmg Glimmer Nail Lacquer Eraser Pen

Glide over nail edges after applying nail lacquer for a clean and perfected manicure.

.135 fl. oz.  
704-443  
reg. \$10  
\$7.49



Subtle yet eye-catching radiance.

Rosé  
463-628

## fmg Glimmer Powder Illuminator

Finely milled powder creates a multi-dimensional luminous glow instantly. Lightweight buildable formula with vitamin E builds and blends effortlessly, providing a naturally radiant finish. Free from parabens, phthalates and fragrance.

.35 oz. net wt.  
reg. \$14  
\$9.99



Prosecco 905-580  
Rosé 463-628

Instant pop of color.

Petal Pink  
618-209

## fmg Glimmer Powder Blush

Richly pigmented. Weightless formula with ultrafine pearl for added dimension and vivid payoff. Buildable coverage and soft matte finish. With skin-nourishing vitamin E. Free from parabens, phthalates and fragrance.

.28 oz. net wt.  
reg. \$14  
\$9.99



Pink Passion 618-213  
Petal Pink 618-209  
Cranberry Crush 618-194

Creamy formula for lips and cheeks.

Blushing Nude  
022-911

## fmg Glimmer Be Blushed Cheek Color

Glides on smoothly without streaking for a natural flush of color. Buildable coverage. Soft dewy finish. With skin-nourishing vitamin E for antioxidant benefits. Free from parabens, phthalates and fragrance.

.14 oz. net wt.  
reg. \$14  
\$10.99



Blushing Nude 022-911  
Golden Rose 022-840



Tropical Peach 022-964  
Crushed Berry 022-945  
Icy Petal 022-854

Brightens up lips and cheeks.

Plumeria  
628-851

## fmg Glimmer Lip & Cheek Stain

Highly pigmented shades that wear all day. Lightweight gel formula blends and builds like a dream, providing the perfect pop of gorgeous luminous color. Brush tip applicator. Transfer-proof. Free from parabens and fragrance. Vegan.

.19 fl. oz.  
reg. \$14  
\$11.99



Rosette 628-832  
Plumeria 628-851

# LIP

Gloss? Balm?  
Even better!

## TPSY Drunk Shiny Lip Oil

A deeply moisturizing lip oil that is instantly absorbed with a tint of color and matches every lip. No hassle. No residue. No stickiness. Infused with jojoba, argan and castor oils. Use alone or over your fave Forever Lip Marker.

.13 oz. net wt.  
reg. \$15  
**\$12**



Good Housekeeping  
Magazine 2022 Beauty  
Award Winner

## fmg Cashmere Essence Lipcream

Plant-based Bio-Retinol, known for effective anti-aging properties without the harsh irritation, improves lip hydration and protection. With ginseng cell extract, antioxidant meadowfoam seed oil and vitamin E. High-shine finish.

.11 oz. net wt. reg. \$22  
**\$18**



Day Dreamer 885-773 Cozy Rosy 879-626 Coral Charm 879-148



Honey Mandarin 876-024 Summer Berry 881-766



Plush Peony 873-977 Cherry Rush 876-870

*America's  
only lipstick  
with a  
Bio-Retinol  
core!*



Get kiss-ready with  
the perfect partner.

## TPSY Forever Lip Marker

Hydrating formula that stays on lips all day. Unique marker design allows for easy application. Kiss-proof. .08 fl. oz.

reg. \$15  
**\$12**



Crazy Rabbit 495-292 Orange Red 495-311



Felt Pink 495-240 Blackberry Bite 495-364



Sour Candy 495-254

Vegan. Earth-friendly packaging.

Lush color and shine.

## fmg Cashmere Rouge Lacquer

High-performance all-day wear. Dual-ended. Full-coverage color dries quickly without feathering. Moisturizing top coat locks color in place for a high-shine finish. Transfer-, smudge- and feather-proof.

.20 oz. total net wt.  
reg. \$22  
**\$18**



Pinkfection 336-919 Ravishing Rose 334-749 Beautifully Bare 334-715



Berry Bliss 336-335 Mauvelous 334-681 Stunning Scarlet 334-825





## GLOKOLOR Clean. Vegan. Hydration.

Rich serum  
pampers lips.

### fmg GLOKOLOR Lip Serum Pencil

Infused with a burst of peppermint oil, a nourishing lip booster complex and argan oil. Lips feel smooth and refreshed. Free from parabens and fragrance.

.06 oz. net wt.

787-508 reg. \$20

\$16



Ultrafine water-based  
formula awakens skin  
while locking makeup  
in place.

### fmg GLOKOLOR Hybrid Face Mist

Spritz it anytime, anywhere for an instant boost of moisture to refresh skin. With aloe vera, agave and algae extracts to help soothe and nourish the complexion.

Dermatologically tested.

Free from parabens and sulfates. 2.7 fl. oz.

787-599

reg. \$24

\$20



Prep step with  
instant boost  
of moisture!

### fmg GLOKOLOR Hybrid Face Primer

Light, breathable formula softens the appearance of imperfections while creating a flawless canvas for makeup. With aloe vera, agave and algae extracts to help soothe and nourish the complexion.

Dermatologically tested. Free from parabens and sulfates.

1 fl. oz.

787-637

reg. \$24

\$20





## CASHMERE FACE

Nougat (W) 126-107		
Marshmallow (N) 131-849	Macadamia (W) 136-525	Ganache (WO) 136-889
Cappuccino (N) 136-893	Chai (WO) 136-559	Toasty (N) 139-027
Praline (N) 141-406	Tiramisu (W) 137-278	Soufflé (N) 139-730
Muffin (W) 142-307	Gingerbread (C) 142-311	Pudding (N) 146-097
Amaretto (N) 146-188	Latte (W) 147-480	Brownie (WO) 147-461
Hazelnut (W) 147-495	Cognac (W) 147-681	Pecan (N) 149-699
Java (W) 149-722	Clove (N) 149-756	Truffle (C) 150-263

Featured shade:  
24 Hour Foundation In Java.

Good Housekeeping Magazine  
2021 Beauty Award Winner.

**fmg Cashmere 24 Hour Foundation\***  
24 hours of comfortable, breathable wear.  
Full, flexible coverage. Soft-focus matte finish.  
Visibly blurs pores and fine lines for a smoother  
complexion. With antioxidant botanical extracts.  
Water-resistant. Vegan. 1 fl. oz. **reg. \$32**  
**\$24.50**

\*Available in Cool (C),  
Neutral (N), Warm (W)  
and Warm Olive (WO) undertones.

\*\*Available in Cool (C), Neutral (N) and  
Warm (W) undertones.

## CASHMERE FACE luxury in the shade of you

2-in-1 powder can be worn wet or dry.

### fmg Cashmere Compact Powder Foundation\*\*

Use as foundation or setting powder. Buildable medium-to-full coverage. Soft-focus matte finish. Amino-acid-coated pigments control shine. With collagen, lavender oil, and artichoke and chamomile extracts. Includes mirror compact and sponge. .40 oz. net wt. **reg. \$36**

**\$30**



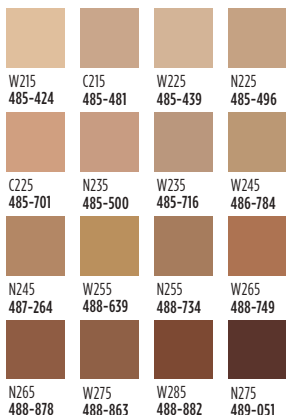
N150  
111-658

Velvety soft-matte color.

### fmg Cashmere Cushion Foundation\*\*

Enriched with soothing calendula extract, moisturizing squalane and skin-brightening niacinamide. Helps to cover the look of imperfections. Light-to-medium coverage. Includes sponge puff applicator. Free from parabens, phthalates and fragrance. .42 oz. net wt. **reg. \$27**

**\$24.50**



W275  
488-863



24 hours of comfortable, breathable wear.

### fmg Cashmere 24 Hour Concealer\*

Full coverage. Soft-focus matte finish. Visibly corrects dark circles and imperfections. With antioxidant botanical extracts. Water-resistant. .20 fl. oz.

**reg. \$22**

**\$16**



Toffee (W)  
123-662



Packaging may vary.

## MATCH MAKEUP

Primes, protects and perfects.

### fmg Match Prime Face Perfector

Flaw-blurring mattifying primer with SPF 20. Shine-defying microspheres visibly minimize pores and fine lines. Sheer breathable coverage suitable for all skin tones. Soft-focus matte finish. Free from oil and parabens.

1 fl. oz.  
932-377  
reg. \$14  
**\$11.49**



Camouflage imperfections.

### fmg Match Wand Correcting Stick

Minimizes skin concerns without creasing or caking! With shea butter and vitamin E. Free from parabens, phthalates and sulfates.

.21 oz. net wt. reg. \$16  
**\$12.99**



Pistachio: neutralizes redness 726-770



Gelato: brightens dullness 726-785



Sherbet: neutralizes dark circles and marks 726-790

Pistachio 726-770



Conceal + Contour + Highlight

### fmg Match Wand Foundation Stick

Instantly blurs and perfects skin. Helps to control oil and shine. Full and flexible all-over coverage in a demi-matte finish. Water-resistant. With shea butter and antioxidant vitamin E. Perfect for easy touch-ups. Free from parabens, sulfates and phthalates. Vegan.

.21 oz. net wt.  
reg. \$16  
**\$12.99**

Truffle (C) 596-297



Instantly hydrates, blurs and evens tone!

### fmg Match Filter Serum Tint Foundation

Infused with hyaluronic acid, vitamin E and a berry complex. Demi-matte powder finish. Buildable sheer-to-medium coverage. Suitable for all skin types. Includes sponge applicator. Free from talc, parabens and fragrance. .31 oz. net wt.

reg. \$18  
**\$14.99**



Fair 932-491



Fair Light 932-620



Light 932-640



Light Medium 932-654



Soft Medium 932-783



Medium 932-836



Medium Deep 933-153



Tan Deep 933-168



Deep 933-172

Soft Medium 932-783



Marshmallow (N) 594-882



Vanilla (W) 594-935



Macadamia (W) 595-028



Chai (W) 595-157



Toasty (N) 595-229



Cappuccino (W) 595-233



Tiramisu (W) 595-252



Amaretto (N) 595-267



Latte (W) 595-400



Hazelnut (W) 595-860



Pecan (N) 595-946



Truffle (C) 596-297

Available in Warm (W), Neutral (N) and Cool (C) undertones.



Mineral-infused loose powder and brush in one!

**fmg Match Set Finishing Powder To-Go**  
Creates an invisible veil that controls shine and sets makeup. Lightweight formula diffuses light and visibly blurs pores and fine lines. Silky-soft matte finish never looks cakey. Free from talc, parabens and fragrance. .09 oz. net wt. **227-063**  
reg. \$19  
**\$14.99**



Creates an invisible veil that controls shine and sets makeup.

**fmg Match Set Finishing Powder**  
Lightweight mineral-infused loose powder formula diffuses light and visibly blurs pores and fine lines. Silky-soft matte finish never looks cakey. Includes puff applicator. Free from talc, parabens and fragrance. .22 oz. net wt.  
**932-472**  
reg. \$17  
**\$13.99**



Helps control oil and create a shine-free canvas.

**fmg Match Blur Oil Control Primer Balm**  
Sheer mattifying formula. Special blurring powder microspheres help reduce the look of fine lines and pores. With nutmeg extract for antioxidant benefits. Includes sponge applicator. Free from talc and parabens. .59 oz. net wt.  
**932-381**  
reg. \$19  
**\$15.99**



Blend of ultrafine rose quartz, ruby and tourmaline.

**fmg Match Dust Finishing Powder**  
Weightless loose mineral powder diffuses light, visibly blurs pores and controls shine. Soft matte finish. Includes no-spill twist-and-lock sifter. Free from talc, oil and parabens. .21 oz. net wt. **reg. \$17**  
**\$13.99**

Translucent Fair-Light  
594-720

Translucent Medium-Deep  
594-768



Translucent  
Medium-Deep  
594-768

Helps camouflage as it corrects and brightens.

**fmg Match Corrector Brightening Perfector**  
Creamy veil of color helps blur flaws and reduce the appearance of fine lines, dark circles and blemishes. Buildable sheer-to-medium coverage with a demi-matte finish. Free from talc, parabens, sulfates, alcohol and fragrance. .11 oz. net wt.  
**reg. \$13**  
**\$9.99**

Fair-Light  
932-396

Medium  
932-415

Tan-Deep  
932-434



Medium  
932-415

## MAKEUP MUST-HAVES

### fmg Vanity Organizer

Makeup-theme print. Four compartments with two removable inside dividers, three outer pockets and lattice elastic straps. Folds for easy storage. 9½" L x 6" W x 5" H. Polyester. Imported.

**022-816 reg. \$30**  
**\$22.99**



**NEW**

### fmg Set & Fix Spray

Lightweight formula controls oil and creates a protective shield, keeping makeup smudge-proof and looking fresh all day. Conditions and smooths skin. Ultrafine mist dries quickly to an invisible finish. Non-greasy, non-sticky. Free from parabens, sulfates, phthalates and silicones.

1.7 fl. oz. **416-707**  
reg. \$15  
**\$9.99**



### fmg Makeup Remover Wipes

Formulated with antioxidant vitamin E and an extract blend of aloe, chamomile, cucumber, marshmallow root and soothing oat. Leaves skin feeling soft and clean. Fragrance-free. Resealable pack of 24 wipes.

**333-867 reg. \$9**  
**\$7.49 each**



### fmg Oil Rewind Roller Ball

Reusable 360° rotating volcanic-stone roller instantly absorbs oil and grease. Control shine throughout the day without disturbing makeup. Ideal for touching up makeup on the go. Clean after each use. 1" W x 3" H. Plastic handle, protective cap. Imported.

**508-294**  
reg. \$16  
**\$12.99**



### fmg Moisturizing Eye Makeup Remover Lotion

Cleans, refreshes and moisturizes around the delicate eye area as it whisks away makeup.

2.5 fl. oz.  
**543-272**  
reg. \$8  
**\$5.99**



### fmg Express Makeup Brush Wash

Alcohol-free formula. Contains soothing aloe vera and green tea extract. Bristles are left conditioned with no leftover residue.

1 fl. oz. **141-368**  
reg. \$12  
**\$9.99**



### fmg Waterproof Lip & Eye Makeup Remover

Dual-layer oil and water remover leaves skin fresh and clean. Mineral-, tar-, talc- and paraben-free.

3.7 fl. oz.  
**352-243**  
reg. \$12  
**\$7.99**



DUAL-ENDED BRUSHES & MORE

**fmg Kabuki Brush**

With soft, angled bristles to effortlessly blend pressed or loose powder formulas. Retractable. Cap keeps the brush head safely covered when not in use. 3 3/4" L x 1" diam. **732-370** reg. \$16 **\$13.99**



**fmg Flawless Complexion Sponge**

With a full rounded bottom for all-over makeup application and blending, and a flat side for contouring, highlighting and concealing. 2 1/2" L x 1 1/2" W. 100% PU, latex-free. **140-160** reg. \$9 **\$6.99**



**fmg Unready Makeup Remover Cloth**

Dual-sided cloth makes makeup removal quick and easy. Gently exfoliates skin. 100% polyester. 9 7/8" sq. Machine wash and dry. Imported. **230-176** reg. \$12 **\$9.99**



**fmg Eyeshadow Blending Brush**

With a soft, domed crease brush on one end and a flattened, all-over eyeshadow brush on the other to apply and buff eyeshadow. 6" L. **933-320** reg. \$14 **\$10.99**



**fmg Complexion Blending Brush**

With a dense, rounded buffing foundation brush on one end and a precise, rounded concealer brush on the other to create a flawless canvas. 6 1/2" L. **933-210** reg. \$21 **\$16.99**



**fmg Blush & Contour Brush**

With a tapered, oval blush brush on one end and a fluffy, angled contour brush on the other to add color and dimension. 7 1/4" L. **933-259** reg. \$20 **\$15.99**



**fmg Precision Eye Brush**

With an angled eyeliner brush on one end and a pointed pencil brush on the other to highlight or add depth to eyes. 5 1/4" L. **933-187** reg. \$14 **\$10.99**



# lush layers

your favorite scent, anytime, anywhere.



**NEW**

**LIMITED EDITION**

**Intense Parfum Stick**

Take your signature scent to go! Purse- and travel-friendly, no-mess solid formula delivers the same fragrance impression as an eau de parfum. Easy glide-on application. Leaves no residue, melts quickly into skin. Each, .11 oz. net wt.

**Haiku Intense 184-165**

**Rare Pearls Intense 184-184**

**Far Away Intense 184-170**

reg. \$23

**\$19.99 each**



**HAIKU** serene. divine. elegant.

FRAGRANCE

**Haiku**

*fresh green floral*

Japanese yuzu, delicate muguet and blonde woods.

**Original Eau de Parfum**

1.7 fl. oz. **601-030**

reg. \$25

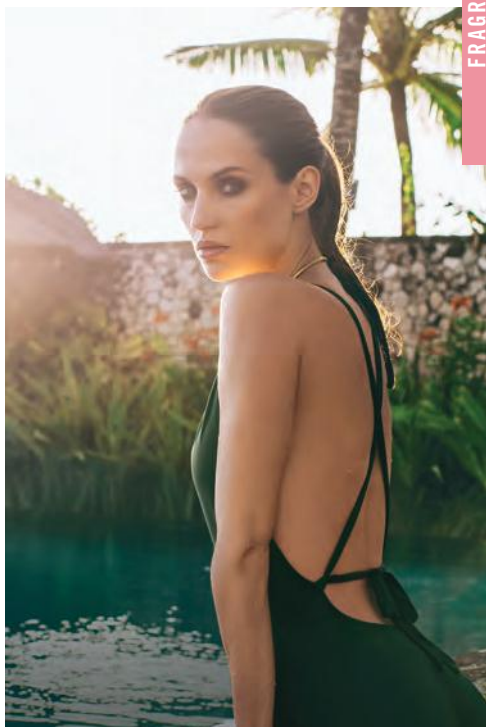
**\$18.99**

**Hair & Body Mist**

3.25 fl. oz. **572-574**

reg. \$16

**\$11.99**



**Intense Eau de Parfum**

1.7 fl. oz. **097-110**

reg. \$31

**\$25.99**

**Intense Travel Spray**

.3 fl. oz. **880-353**

reg. \$16

**\$12.99**



**Intense  
Luxury Body Crème**

5 fl. oz. **806-239**

reg. \$23

**\$18.99**



**FREE**

**Live Out Loud Eau de Parfum** with any \$30 fragrance purchase, pages 104 thru 125. \$40 value. Sold separately on page 114. Limited quantities.

HAIKU serene. divine. elegant.



**Haiku Kyoto Flower**  
*fresh green floral*  
Violet leaf, white peony  
and soft cotton musk.

**Original**  
**Eau de Parfum**  
1.7 fl. oz.  
144-352  
reg. \$25  
**\$18.99**

**Intense**  
**Eau de Parfum**  
1.7 fl. oz.  
578-811  
reg. \$31  
**\$25.99**



**Haiku Sacred Intense**  
**Eau de Parfum**  
*fruity floral*  
Discover a divine blend  
of uplifting tangerine,  
rose de mai and  
earthy driftwood.  
1.7 fl. oz.  
579-750  
reg. \$31  
**\$25.99**



**Haiku Reflection**  
**Eau de Parfum**  
*fresh green floral*  
Radiant water accord,  
acacia blossom and  
amber wood.  
1.7 fl. oz.  
617-657  
reg. \$25  
**\$18.99**



**FRAGRANCE SETS** save on all your faves

---



**SET INCLUDES:**

**Haiku Intense Eau de Parfum**  
*fresh green floral*  
Japanese yuzu, delicate muguet  
and blonde woods. 1.7 fl. oz.

**Haiku Perfumed Skin Softener**  
3.25 fl. oz

**2-PIECE SET**  
**\$16.99**

**\$39 VALUE**  
859-822

---



**SET INCLUDES:**

**Haiku Intense Eau de Parfum**  
1.7 fl. oz.

**Haiku Deodorant Stick**  
1 oz. net wt.

**2-PIECE SET**  
**\$19.99**

**\$43 VALUE**  
859-856

---



**SET INCLUDES:**

**Haiku Intense Eau de Parfum**  
1.7 fl. oz.

**Haiku Body Lotion**  
6.7 fl. oz

**2-PIECE SET**  
**\$16.99**

**\$41 VALUE**  
861-939

---

# Far Away

A wanderlust for the exotic.



**Far Away**  
*amber floral**Top:* Bergamot,  
Freesia, Peach*Mid:* **Jasmine Absolute**,  
Ylang-Ylang,  
Orange Blossom*Dry:* Vanilla Absolute,  
Musk, **Enticing Amber****Original**  
**Eau de Parfum**  
1.7 fl. oz.  
**685-712**  
reg. \$25  
**\$18.99****Intense**  
**Eau de Parfum**  
1.7 fl. oz.  
**931-332**  
reg. \$31  
**\$25.99****Shimmering**  
**Body Mist**  
3.25 fl. oz.  
**618-945**  
reg. \$20  
**\$15.99****Hair & Body Mist**  
3.25 fl. oz.  
**572-536**  
reg. \$16  
**\$11.99****Intense Luxury**  
**Body Crème**  
5 fl. oz.  
**806-300**  
reg. \$23  
**\$18.99**Enjoy special prices and offers with  
an Avon account or Representative.

**FAR AWAY** a world full of infinite possibilities



**Far Away Bali  
Eau de Parfum  
fruity floral**  
Sparkling grapefruit,  
salted tuberose and  
golden amber.  
1.7 fl. oz.  
**451-389**  
reg. \$25  
**\$18.99**



**Far Away Infinity  
Eau de Parfum  
fruity floral**  
Radiant bergamot,  
jasmine sambac and  
sensual sandalwood.  
1.7 fl. oz.  
**318-481**  
reg. \$25  
**\$18.99**



**Far Away Gold  
Eau de Parfum  
amber floral**  
Ylang-ylang,  
Indian jasmine and  
Madagascar vanilla.  
1.7 fl. oz.  
**685-727**  
reg. \$25  
**\$18.99**

## RARE a treasure beyond compare

### Rare Pearls

#### *soft floral*

Shimmering magnolia, white pepper and creamy rosewood.

#### Eau de Parfum

1.7 fl. oz.

**761-615**

reg. \$25

**\$18.99**

#### Hair & Body Mist

3.25 fl. oz.

**572-851**

reg. \$16

**\$11.99**



### Rare Gold Intense

#### Eau de Parfum

#### *amber floral*

Opulent notes of mandarin zest, ylang-ylang and golden amber.

1.7 fl. oz.

**784-126**

reg. \$31

**\$25.99**



### Rare Amethyst

#### Eau de Parfum

#### *fruity floral*

Passionate plum, blooming violet and rich sandalwood.

1.7 fl. oz.

**933-062**

reg. \$25

**\$18.99**





**Imari Amor**  
*woody floral*

*Top:* Mandarin, Lychee,  
**Black Currant**, Green Notes

*Mid:* Rose, Jasmine, Neroli,  
Ylang-Ylang, **Precious Orris**

*Dry:* Sandalwood, Amber,  
Patchouli, Warm Musk

**Eau de Parfum**  
1.7 fl. oz. **762-573** reg. \$25  
**\$17.99**



**Imari**  
**Eau de Toilette**  
*amber floral*  
Italian bergamot,  
tempting jasmine  
and amber.  
1.7 fl. oz.  
**871-496**  
reg. \$25  
**\$18.99**



**Imari Seduction**  
**Eau de Toilette**  
*amber floral*  
Wild berries,  
hypnotic purple  
orchid and patchouli.  
1.7 fl. oz.  
**452-897**  
reg. \$25  
**\$18.99**





**SET INCLUDES:**

**Imari Amor Eau de Parfum**  
*woody floral*

Rich black currant, precious orris and warm musk. 1.7 fl. oz.

**Today Dry Oil Spray**  
*soft floral*

Magnolia blossoms, hibiscus petals and silk musk. 3.25 fl. oz.

**Imari Roll-On**  
**Anti-Perspirant Deodorant**  
*amber floral*

Italian bergamot, tempting jasmine and amber. 2.6 fl. oz.

**3-PIECE SET**

**\$23.99**

**OVER \$50 VALUE**

**373-005**



**SET INCLUDES:**

**Imari Amor Eau de Parfum**  
1.7 fl. oz.

**Avon Prima Dry Oil Spray**  
*amber floral*

Delicate plum, pink rose and white patchouli. 3.25 fl. oz.

**Imari Roll-On**  
**Anti-Perspirant Deodorant**  
2.6 fl. oz.

**3-PIECE SET**

**\$23.99**

**OVER \$50 VALUE**

**374-260**



Leaves skin feeling soft, silky and beautifully scented, with no residue!

**NEW**

**Dry Oil Spray**

Fast-absorbing lightweight nourishing oil replenishes moisture instantly. Use on damp skin for the perfect post-shower glow. Each, 3.25 fl. oz.

**Today soft floral**

Magnolia blossoms, hibiscus petals and silk musk. **463-886**

**Avon Prima amber floral**

Delicate plum, pink rose and white patchouli. **463-910**  
reg. \$22  
**\$17.99 each**

**NEW**

**Live Out Loud #4U  
Eau de Parfum  
fruity floral**

Juicy mandarin, luscious peach blossom and sweet vanilla. 1.7 fl. oz.

**735-968**  
reg. \$40  
**\$26.49**

**Live Out Loud  
Eau de Parfum  
fruity floral**

Sweet wild strawberry, sparkling mimosa and comforting fluffy vanilla. 1.7 fl. oz.

**142-000**  
reg. \$40  
**\$26.49**

**Today  
Eau de Parfum  
soft floral**

Magnolia blossoms, hibiscus petals and silk musk. 1.7 fl. oz.

**325-920**  
reg. \$30  
**\$26.49**





# RÊVE EN CUBE

Explore an enchanting space where fantasy blooms, romance is uninhibited and true beauty comes to life.

**Rêve en Cube**  
**Letter from the Stars**  
**Eau de Parfum**  
*fruity floral*  
Radiant grapefruit,  
sweet gardenia and  
jasmine. 3.4 fl. oz.  
**809-238**  
reg. \$70  
**\$59**



**Rêve en Cube**  
**Misty Green**  
**Eau de Parfum**  
*soft floral*  
Bergamot, lily of  
the valley and  
white musk.  
3.4 fl. oz.  
**850-863**  
reg. \$70  
**\$59**



L I V E

Y O U R

D R E A M

**Avon Classics  
Dreamlife**

**soft floral**

A magical blend perfect  
for every fantasy.

*Top:* **Mimosa Flower,**  
Hyacinth, Apricot

*Mid:* **Aspirational Rose,**  
Ylang-Ylang, Vanilla

*Dry:* Patchouli,  
Sandalwood,  
**Glowing Amber**

**Cologne**

1.7 fl. oz. **236-227**  
reg. \$18  
**\$11.99**



ALWAYS  
BEAUTIFUL

**Timeless Cologne**  
*soft floral*  
Cardamom, jasmine  
and patchouli.  
1.7 fl. oz.  
**037-930**  
reg. \$18  
**\$11.99**



**Topaze Cologne**  
*soft floral*  
Jasmine, rose  
and sheer musk.  
1.7 fl. oz.  
**735-217**  
reg. \$18  
**\$11.99**



**Night Magic Cologne**  
*woody floral*  
Neroli, jasmine  
and musk.  
1.7 fl. oz.  
**168-682**  
reg. \$18  
**\$11.99**



**Sweet Honesty Cologne**  
*soft floral*  
Lily of the valley,  
rose and cedarwood.  
1.7 fl. oz.  
**037-595**  
reg. \$18  
**\$11.99**



**Odyssey Cologne**  
*soft floral*  
Tuberose,  
ylang-ylang and  
warm oakmoss.  
1.7 fl. oz.  
**168-697**  
reg. \$18  
**\$11.99**



**Free O<sub>2</sub>**  
**Eau de Toilette**  
*fresh green floral*  
White peach tea,  
airy honeysuckle  
and musk.  
1.7 fl. oz.  
**265-658**  
reg. \$18  
**\$11.99**



**Candid Cologne**  
*amber floral*  
Bergamot,  
tuberose and  
patchouli.  
1.7 fl. oz.  
**038-295**  
reg. \$18  
**\$11.99**



**LYRD Artisan Cannabis Oud Eau de Parfum**  
*fresh citrus*

Sweet pomelo, rich agarwood and earthy cannabis leaves. Contains .01% of CBD. This eau de parfum does not contain THC.  
1.7 fl. oz.  
254-544  
reg. \$60  
**\$49**



**LYRD Oud Rose**  
*woody floral*  
Spicy saffron, romantic rose and velvety patchouli.

**Eau de Parfum**  
1.7 fl. oz.  
954-412  
reg. \$38  
**\$32**

**Travel Spray**  
.3 fl. oz.  
448-496  
reg. \$21  
**\$17**



**LYRD Sparkling Neroli Eau de Parfum**  
*fresh citrus*

Sparkling neroli, bergamot and warm musk.  
1.7 fl. oz.  
572-521  
reg. \$36  
**\$29**



**LYRD Honeysuckle Blossom Eau de Parfum**  
*soft floral*

Apple blossom, honeysuckle nectar and vanilla orchid.  
1.7 fl. oz.  
616-282  
reg. \$24  
**\$20**



**LYRD Peony Rosé Eau de Parfum**  
*soft floral*

Peony petals, pink currant and sheer musk.  
1.7 fl. oz.  
616-210  
reg. \$24  
**\$20**



# Seasonal Delights

Get ready for the holidays!  
Apple picking, tree trimming  
and pumpkin pie, oh my!

## LIMITED EDITION

### ◆ LYRD Candle

Three-wick, 11 oz. candle gives  
30 hours of burn time. 4 1/4" diam.  
x 3 1/8" H. Glass jar, paper dust cover,  
soy blend wax. Assembled in USA.

reg. \$25

**\$19.99 each**



### ◆ LYRD Enchanted Snowy Forest Candle

Take a magical walk in a winter wonderland as fresh snow falls and the air fills with notes of frost, pine and smoked woods. **082-069**

### ◆ LYRD Let's Go Apple Picking! Candle

Family fun time at the apple orchard! Delight in the aroma of cozy cinnamon, juicy red apple and crisp cashmere woods. **082-001**

### ◆ LYRD Sticky Cinnamon Goodness Candle

Yummy! Fluffy warm dough, drizzled with sinfully sweet cinnamon sugar and ooey-goey golden caramel. **082-020**

### ◆ LYRD Save Room for Pumpkin Coconut Pie Candle

Did someone say pie? A warm fall hug with notes of shredded coconut, creamy pumpkin puree and sweet vanilla bean extract. **082-054**

## MESMERIZE

**Mesmerize Ultimate**  
Eau de Toilette  
*woody fougère*  
Black pepper,  
zesty pomelo and  
sensuous patchouli.  
3.4 fl. oz. 897-030  
reg. \$36  
**\$27.99**



# MESMERIZE

CAPTIVATE AT  
A SINGLE GLANCE

**Mesmerize Cologne**  
*fresh aromatic*  
Bergamot, spicy  
cardamom and amber.  
3.4 fl. oz.  
871-458  
reg. \$25  
**\$18.99**



**Mesmerize Black**  
Eau de Toilette  
*woody fougère*  
Pepper, addictive nutmeg  
and tonka bean.  
3.4 fl. oz.  
305-667  
reg. \$25  
**\$18.99**



**Mesmerize Platinum**  
Ultimate Eau de Toilette  
*woody floral*  
Crisp pear, violet  
and warm amber.  
3.4 fl. oz.  
179-633  
reg. \$36  
**\$27.99**





## FRAGRANCE SETS save on all your faves

---



### SET INCLUDES:

**Mesmerize Cologne**  
*fresh aromatic*  
Bergamot, spicy cardamom  
and amber. 3.4 fl. oz.

**Wild Country Cologne**  
*fresh aromatic*  
Lavender, coriander seed  
and sandalwood. 3 fl. oz.

**2-PIECE SET**  
**\$19.99**  
**\$47 VALUE**  
374-422



### SET INCLUDES:

**Black Suede Eau de Toilette**  
*fresh aromatic*  
Fusion of bergamot, soft leather  
and oak moss. 3.4 fl. oz.

**Wild Country Cologne**  
3 fl. oz.

**2-PIECE SET**  
**\$17.99**  
**\$44 VALUE**  
374-441



### SET INCLUDES:

**Avon Exploration Eau de Toilette**  
*fresh aromatic*  
Fresh orange, silver sage and  
vetiver. 2.5 fl. oz.

**Wild Country Cologne**  
3 fl. oz.

**2-PIECE SET**  
**\$19.99**  
**\$47 VALUE**  
374-551



# BLACK SUEDE ULTIMATE

EFFORTLESSLY COOL

**Black Suede  
Ultimate**  
*woody fougère*  
A dynamic blend of  
lemon, rich lavender  
and tonka bean.

**Eau de Toilette**  
3.4 fl. oz.  
792-412 reg. \$27  
**\$22.99**

**Body Moisturizer**  
6.7 fl. oz. 003-894 reg. \$19  
**\$14.99**

**Body Wash**  
6.7 fl. oz. 003-875 reg. \$19  
**\$14.99**

**Black Suede  
Eau de Toilette**  
*fresh aromatic*  
Fusion of bergamot,  
soft leather and  
oak moss.  
3.4 fl. oz.  
908-703  
reg. \$22  
**\$14.99**



**Black Suede  
Hair & Body Wash**  
5 fl. oz.  
366-318  
reg. \$8  
**\$3.99**



**Black Suede  
Aftershave  
Conditioner**  
3.4 fl. oz.  
367-238  
reg. \$8  
**\$3.99**



## MEN'S FRAGRANCES

**Studio 1886 Gentleman**  
*woody fougère*  
Dynamic blend of geranium, black pepper and cedarwood.

**Eau de Toilette**  
1.7 fl. oz. **708-750**  
reg. \$50  
**\$39**

**Aftershave Lotion**  
6.7 fl. oz. **708-927**  
reg. \$16  
**\$12.99**



**Studio 1886 Legendary**  
*Eau de Parfum*  
*woody fougère*  
Vibrant lemon, crisp lavender, patchouli and salted amber.  
1.7 fl. oz.  
**269-820**  
reg. \$50  
**\$39**



**Wild Country Cologne**  
*fresh aromatic*  
A rugged blend of lavender, coriander seed and sandalwood.  
3 fl. oz.  
**086-466**  
reg. \$22  
**\$14.99**



**Wild Country**  
*Hair & Body Wash*  
5 fl. oz. **364-080**  
reg. \$8  
**\$3.99**



**Wild Country**  
*Aftershave Splash*  
4 fl. oz.  
**366-432**  
reg. \$13  
**\$10.49**



**Perceive Cologne**  
*fresh aromatic*  
Sparkling citrus, sage and cedarwood.  
3.4 fl. oz.  
**194-550**  
reg. \$25  
**\$18.99**



**Avon Exploration**  
*Eau de Toilette*  
*fresh aromatic*  
Fresh orange, silver sage and vetiver.  
2.5 fl. oz.  
**593-666**  
reg. \$25  
**\$18.99**



## SCENTED ESSENTIALS

### Avon Classics Hand Cream

Moisturizing formula with jojoba seed oil and vitamin E. Leaves skin lightly scented. Each, 2.5 fl. oz.

**Sweet Honesty 234-789**

**Night Magic 235-440**

**Timeless 234-740**

reg. \$6

**\$3.99 each**



### Body Scrub & Wash

Gentle formula cleanses as it removes rough, dry skin. Skin is refreshed, smooth and beautifully scented. Each, 6.7 fl. oz.

**Haiku 143-208**

**Far Away 143-360**

reg. \$12

**\$9.99 each**



### Body Lotion

Luxurious moisturizer leaves skin soft and scented. Each, 6.7 fl. oz.

**Far Away 082-881**

**Rare Pearls 082-915**

**Haiku 447-820**

reg. \$10

**\$6.99 each**

# Creamy softness

**Perfumed Skin Softener**  
Moisturizing formula leaves skin soft and scented.

- Each, 5 fl. oz.
- Haiku **813-973**
- Candid **103-926**
- Far Away **812-981**
- Night Magic
- Evening Musk
- 104-129**
- Odyssey **104-171**
- Sweet Honesty
- 104-463**
- Timeless **104-478**
- Imari **818-239**
- reg. \$8
- \$3.99 each**



**Deodorant Stick**

All-day freshness in your favorite classic Avon scent! Nourishing formula glides on smoothly without leaving any residue. Lasting odor protection. Each, 1 oz. net wt.

- Wild Country 692-012**
- Black Suede 705-602**
- Rare Pearls 727-891**
- Haiku 727-906**
- reg. \$12
- \$9.99 each**

**Gentology Herb & Aloe All-Over Wash**  
For face, hair and body. With aloe and natural herbal extracts.  
10.1 fl. oz.  
**533-347**  
reg. \$16  
**\$13.65**



**Bar Soap**  
Moisturizes as it gently cleanses, leaving skin lightly fragranced.  
Each, 3.17 oz. net wt.  
**Black Suede 495-565**  
**Wild Country 495-570**  
reg. \$6  
**\$3.99 each**



## PLAYTEX® comfort and smoothing support

Shown:  
Taupe.



PINK  
PIROUETTE

TAUPE

GREY

BLACK

### ❖ Playtex® Bounce Control® Wirefree Bra (US4221)

Designed to reduce bounce. Extra side and back support. Adjustable no-slip straps. Breathable mesh neckline, wirefree design with wicking Cool Comfort® fabric. Nylon/spandex. Hand wash, line dry. Imported. Sizes: 38-48C,D,DD,DDD (all colors). **reg. \$46**  
**\$36.99**

Shown:  
Nude.



WHITE

NUDE

PRIVATE  
JET

### ❖ Playtex® 18 Hour® Sensationally Sleek™ Wirefree Bra (4803)

Back closure. Lightly lined. Polyester/spandex/nylon/cotton. Hand wash, line dry. Imported. Sizes: 36-44B; 36-48C,D,DD; 38-48DDD (all colors). **reg. \$39**  
**\$31.99**

Shown:  
Toffee.



WHITE

NATURAL  
BEIGE

TOFFEE

ZEN  
BLUE

SAILOR  
BLUE

BLACK

### ❖ Playtex® 18 Hour® Original Comfort Strap® Wirefree Bra (4693)

Back closure. Natural latex rubber/polyester/nylon/cotton. Hand wash, line dry. Imported. **White, Natural Beige or Toffee:** 36-48B,C; 34-48D,DD; 38-48DDD. **Zen Blue:** 36-42B; 36-44C,D; 38-46DD,DDD. **Sailor Blue:** 36-44C,D; 38-46DD; 44-46DDD. **Black:** 36-48B; 36-54C; 36-50D, 54D; 38-54DD. **reg. \$39**  
**\$33.99**

Shown:  
Nude.



WHITE

NUDE

EVENING  
BLUSH

BLACK

### ❖ Playtex® Perfectly Smooth® Wirefree Bra (US4707)

Back closure. Lightly lined. Nylon/spandex, polyester lining. Hand wash, line dry. Imported. **White, Nude or Black:** 36-42B; 36-44C,D,DD; 36-42DDD. **Evening Blush:** 36-44C,D,DD. **reg. \$46**  
**\$37.99**

Shown:  
White.



## PRETTY COMFY

❖ **Bali® Double-Support® Wirefree Bra (3820)**

Back closure. Foam cups. Nylon/spandex. Hand wash, line dry. Imported.

**White:** 34-48B,C,D,DD.

**Pink Chic:** 36-40B; 34-42C,D; 38-42DD.

**Blushing Pink:** 34-40B; 34-42C,D; 36-42DD.

reg. \$44  
**\$34.99**



Shown:  
Brief  
Black.



Shown:  
Hi-Cut  
Black.



❖ **Bali® Beautifully Confident with Leak Protection Liner**

Stay comfortable. Stay dry. Discreet all-day protection for life's minor leaks. Light leak protection liner in crotch. Low bulk. Odor control. Moisture wicking. Won't ride up.

Available in brief and hi-cut styles. Hand wash, line dry. Imported. **reg. \$15**

**\$13 each**



**Brief (DFLLB1)**  
Sizes: M, L, XL, 2XL  
(all colors).



**Hi-Cut (DFLLH1)**  
Sizes: M, L, XL, 2XL  
(all colors).

# gimme a big bottle of moisturization

**Bonus-Size Body Lotion**

Each,  
33.8 fl. oz.  
reg. \$20  
**\$14.99**  
each

**Intensive Healing & Repair**

Intense 72-hour moisture  
for extra-dry skin.  
Fragrance-free.  
**611-644**

**Calming Relief**

Instantly soothes and  
relieves dry, itchy skin.  
Fragrance-free.  
**611-663**

**Daily Skin Defense**

Helps restore  
moisture to  
everyday dry skin.  
**603-028**





**Bonus-Size Bath Oil**

Locks in hydration during or after a bath or shower. Each, 25 fl. oz. reg. \$30  
**\$21.69 each**

**Radiant Moisture**

With argan oil.  
Peony and musk scent.  
**249-788**

**Soft & Sensual**

With argan oil.  
Spicy floral scent.  
**862-920**

**Original**

With jojoba oil. Fresh herbal scent.  
**037-690**

I'm a big fan  
of **silky**  
**softness**





**Bonus-Size Shower Gel**  
Gently cleanses and hydrates.  
Each, 33.8 fl. oz.  
reg. \$18  
**\$13.99 each**

**Soft & Sensual**  
With argan oil.  
Spicy floral scent. **171-848**

**Radiant Moisture**  
With argan oil.  
Peony and musk scent.  
**433-922**

**Original**  
With jojoba oil.  
Fresh herbal scent.  
**170-731**

33.8 fl. oz.

33.8 fl. oz.



## I'm for nourishing hydration in a BIG WAY

**Bonus-Size Body Lotion**  
48-hour moisturization.  
Each, 33.8 fl. oz.  
reg. \$20  
**\$13.99 each**

**Soft & Sensual**  
Skin looks and feels  
sensually soft. With argan oil.  
Spicy floral scent.  
**336-062**

**Radiant Moisture**  
Renews skin's healthy  
radiance. With argan oil.  
Peony and musk scent.  
**942-317**

**Original**  
Skin feels nourished and  
conditioned. With jojoba oil.  
Fresh herbal scent.  
**941-545**

**Supreme Nourishment**  
Transforms skin  
from dry to supremely  
soft and nourished.  
With macadamia nut oil.  
Macadamia and vanilla scent.  
**945-612**





I'm BIG  
on bubbles  
just a capful  
makes a bathful!



**Avon Senses Bubble Bath**  
Up to 24 pampering baths  
in every bottle.  
Each, 24 fl. oz. reg. \$11  
**\$8.99 each**

**Vanilla Cream**  
Rich and creamy. **214-220**

**Cucumber Melon**  
Fresh and sweet. **688-950**

**Orange & Honeysuckle**  
Fresh and sunny. **047-808**

**Lily & Honeysuckle Blossom**  
Fragrant and refreshing.  
**423-394**

**Lavender Garden**  
Soft and serene. **424-735**

**Cherry Blossom**  
Flirty and sweet. **425-033**

**Endless Ocean**  
Breezy and marine.  
**425-048**

**Sensitive Skin**  
Chamomile scent. **213-151**

**Soft Pink**  
Lilac and rose. **425-052**



## SKIN SO SOFT Botanical Essence / Original

**Botanical  
Essence Bath Oil**  
With nourishing  
botanical extracts.  
Uplifting herbal  
scent. 16.2 fl. oz.  
**027-253**  
reg. \$31,  
**\$24.99**



**Original  
Body Lotion**  
48 hours of  
moisture.  
11.8 fl. oz.  
**935-338**  
reg. \$11  
**\$7.69**



**Original Bath Oil Spray**  
Locks in hydration.  
5 fl. oz. **194-325**  
reg. \$14  
**\$9.29**



**Original Gelled Body Oil**

Dries to a silky finish.  
6.76 fl. oz.  
**930-575**  
reg. \$13  
**\$8.69**



**Original Replenishing Hand Cream**

24+ hours of moisturization.  
3.4 fl. oz.  
**941-268**  
reg. \$5  
**\$2.69**



**Original Beauty Bar Soap**

Skin-nourishing bar soap.  
Creamy lather. Suitable for daily use on face, body and hands.  
3.17 oz. net wt. **543-110**  
reg. \$4.50  
**\$3.49**



**Original Shower Gel**

Gently cleanses and hydrates.  
5 fl. oz. **933-005**  
reg. \$8  
**\$5.19**

**Original Bath Oil**

Hydrates during or after bath or shower.  
16.9 fl. oz.  
**439-040**  
reg. \$24  
**\$16.99**



## SKIN SO SOFT Soft & Sensual

### SOFT & SENSUAL

**Gelled Body Oil**  
Dries to a silky finish.  
6.76 fl. oz.  
**908-244**  
reg. \$13  
**\$8.69**

**Bath Oil**  
Hydrates during or after a bath or shower.  
16.9 fl. oz.  
**504-614**  
reg. \$24  
**\$16.99**

**Body Lotion**  
11.8 fl. oz.  
**934-312**  
reg. \$11  
**\$7.69**

**Replenishing Hand Cream**  
24+ hours of moisturization.  
3.4 fl. oz.  
**867-315**  
reg. \$5  
**\$2.69**

**Shower Gel**  
Gently cleanses and hydrates.  
5 fl. oz.  
**435-600**  
reg. \$8  
**\$5.19**



**Beauty Bar Soap**  
Skin-nourishing bar soap. Creamy lather. Suitable for daily use on face, body and hands. 3.17 oz. net wt. **543-215**  
reg. \$4.50  
**\$3.49**



**Antiperspirant Deodorant Roll-On**  
2.6 fl. oz.  
**714-861**  
reg. \$3.60  
**\$2.69**





## SKIN SO SOFT



**Fresh & Smooth Sensitive Skin**  
With meadowfoam oil and aloe. Fragrance-free.

**Facial Hair Removal Cream**  
1 fl. oz. **605-088** reg. \$10

**Body Hair Removal Cream**  
4.2 fl. oz. **923-448** reg. \$10  
**\$5.99 each**

**Comforting Shea Bath Oil**  
16.9 fl. oz.  
**015-071**  
reg. \$24  
**\$16.99**



**Radiant Moisture Shower Gel**  
Gently cleanses and hydrates.  
5 fl. oz.  
**435-777**  
reg. \$8  
**\$5.19**



**Radiant Moisture Replenishing Hand Cream**  
3.4 fl. oz.  
**941-272**  
reg. \$5  
**\$2.69**



**Supreme Nourishment Enriching Coconut Oil Collection**  
The lasting nourishment of coconut oil.

**Lip Balm**  
Coconut flavor.  
.14 oz. net wt.  
**958-370** reg. \$2  
**\$1.39**

**Oil Wash**  
11.8 fl. oz.  
**933-703**  
reg. \$15  
**\$9.99**

LET'S  
CLEAR  
SOME  
THINGS  
UP



developed for  
all skin types, with  
gently exfoliating  
salicylic acid



## Skin So Soft for Acne-Prone Skin

### FOR FACE

#### A. Soothing Spot Gel

Skin looks radiant, even-toned. With rosemary, madecassoside and mint extracts. Leave on, dries clear. .5 fl. oz.

**072-721 reg. \$18**  
**\$13.99**

#### B. Foaming Cleanser

With plant-based scrub, rosemary, madecassoside and mint extracts. 5 fl. oz.

**041-647 reg. \$17**  
**\$12.99**

### FOR BODY

#### C. Soothing Gel

Helps visibly improve tone and texture. Cooling sensation. With glycerin, allantoin and panthenol. Leave on, dries clear.

6.1 fl. oz. **040-636**  
**reg. \$20**  
**\$15.99**

#### D. Exfoliating Body Wash

Non-drying, nonirritating. With rosemary oil.

10.1 fl. oz. **041-556**  
**reg. \$20**  
**\$15.99**

#### E. Gentle Body Wash

Non-drying, nonirritating. With rosemary oil.

10.1 fl. oz. **039-325**  
**reg. \$20**  
**\$15.99**

#### F. Body Pads

Pre-soaked exfoliating cotton pads. Helps even tone. With hyaluronic acid and panthenol.

70 pads. **039-330**  
**reg. \$30**  
**\$24.99**

Suitable for daily use and free of synthetic fragrances.

## AVON SENSES Gratitude

### ❖ A. Candle

1 wick. Soy-wax blend. 3" diam. 3½" H. Burn time, 40 hours. 7 oz. net wt.

**504-686**

reg. \$23

**\$18.99**

Place candle on trivet or holder before lighting to protect furniture. Never leave burning candles unattended. Keep away from children and pets.

### B. Room Spray

Instantly refresh your home.

3.25 fl. oz.

**361-851**

reg. \$13

**\$10.99**

### C. Air Diffuser

Six diffuser reeds.

Fragrance oil, 2.37 fl. oz.

**504-724**

reg. \$30

**\$24.99**

### D. Bath Salts

Pour a handful under warm running water. With sea salt, glycerin and sunflower seed oil. Use 1-3 times a week. 12.5 oz. net wt.

**504-557**

reg. \$23

**\$18.99**

### E. Shower Steamers

Place one on shower shelf and activate with shower steam (avoid heavy stream of water). Each, 1 oz. net wt.

**504-428**

reg. \$26

**\$20.99**

six shower steamers

## AVON SENSES GRATITUDE LAVENDER & CEDARWOOD

Fill your space with the calming and soothing scents of lavender and cedarwood.





**A. Body Mist**  
With aloe vera extract, refreshes and leaves skin feeling soothed.  
8 fl. oz.  
**034-888**  
reg. \$18  
**\$14.99**

**B. Shower Gel**  
Moisturizing cleanser derived from coconut.  
10 fl. oz. **035-190**  
reg. \$17  
**\$13.99**

**C. Body Lotion**  
Smooths and softens with moisture-rich shea butter and vitamin E. 8 fl. oz.  
**035-152** reg. \$17  
**\$13.99**

**D. Hand Soap**  
With moisturizing glycerin, leaves hands feeling clean and soft.  
10.1 fl. oz. **852-081**  
reg. \$13.99  
**\$10.99**

**E. Hand Cream**  
With shea butter and antioxidants, leaves dry hands feeling buttery smooth.  
2.5 fl. oz. **015-029**  
reg. \$6  
**\$4.99**

**F. Body Scrub**  
Remove dry, dead skin while shea butter and olive and avocado oils help moisturize.  
9 oz. net wt.  
**530-314** reg. \$22  
**\$17.99**

## COZY VANILLA & COCONUT

Envelop yourself in a cozy cloud of comforting vanilla, creamy coconut and calming chamomile.

Free from parabens, mineral oil, silicone, phthalates and dyes.



## SENSES Fresh Bergamot / Sparkling Grapefruit



**Hand Cream**  
With shea butter and antioxidants.  
2.5 fl. oz. **852-498** reg. \$6  
**\$4.99**

**Hand Soap**  
With moisturizing glycerin.  
10.1 fl. oz. **852-297** reg. \$13.99  
**\$10.99**

**Shower Gel**  
Coconut-derived cleanser.  
10 fl. oz. **034-873**  
reg. \$17  
**\$13.99**



**FRESH BERGAMOT & WILD MINT**  
A fresh bouquet of dewy flowers mixed with spicy bergamot, clean wild mint and luminous solar musk.

Free from parabens, mineral oil, silicone, phthalates and dyes.



**Hand Cream**  
With shea butter and antioxidants.  
2.5 fl. oz. **852-120** reg. \$6  
**\$4.99**

**Hand Soap**  
With moisturizing glycerin.  
10.1 fl. oz. **852-115** reg. \$13.99  
**\$10.99**

**Body Mist**  
With refreshing aloe vera extract.  
8 fl. oz. **034-687**  
reg. \$18  
**\$14.99**



**SPARKLING GRAPEFRUIT & ORANGE BLOSSOM**  
A juicy mix of zesty grapefruit, bright orange blossom, delicate honeysuckle and luscious peach.

**Senses  
Blushing Cherry Blossom  
Hydrating  
Shower Gel**  
5 fl. oz. **423-299**  
reg. \$6  
**\$3.69**



**Senses  
Juicy Pomegranate  
& Mango  
Hydrating  
Shower Gel**  
5 fl. oz. **462-139**  
reg. \$6  
**\$3.69**



**Senses  
Fresh Cucumber  
& Melon  
Hydrating  
Shower Gel**  
5 fl. oz. **462-071**  
reg. \$6  
**\$3.69**



**Senses  
Silky Vanilla  
Hydrating  
Shower Gel**  
5 fl. oz. **462-105**  
reg. \$6  
**\$3.69**



**Avon Shower Brush**  
Long handle to reach down back. Brush helps to remove dead skin cells as it cleanses. Massage nubs on back of brush. Non-slip comfort handle has convenient hanging loop. **904-727**  
reg. \$10  
**\$7.99**



**Veilment Care  
Moisturizing Bar Soap**  
Derived from olive oil and infused with coconut oil. 2.8 oz. net wt. **380-864**  
reg. \$2.50  
**\$1.99**



**Veilment Care  
Lip Balm**  
Infused with jojoba oil and coconut oil. Delicately scented and tinted. Cherry **604-168**  
Strawberry **602-720**  
Each, .14 oz. net wt.  
reg. \$2  
**99¢ each**



**Moisture  
Therapy**  
Intensive Healing & Repair  
Moisturizing Lip Treatment Balm  
.14 oz. net wt. **285-117**  
reg. \$2  
**99¢**



**Avon Flavor Savers  
Lip Balm**  
Vanilla **209-501**  
Melon **209-334**  
Each, .14 oz. net wt.  
reg. \$2  
**99¢ each**



## MOISTURE THERAPY / PHYSIOGEL / MICROBIOME

### Moisture Therapy Calming Relief Hand Cream

With colloidal oatmeal. Relieves the itchiness associated with dry hands. 4.2 fl. oz. **786-349** reg. \$6 **\$2.69**



### Moisture Therapy Intensive Healing & Repair Hand Cream

Relieves extremely dry, chapped hands. Fragrance-free. 4.2 fl. oz. **482-937** reg. \$6 **\$2.69**



### Moisture Therapy Intensive Healing & Repair Extra Strength Cream

24-hour moisturization. Fragrance-free. 5.3 oz. net wt. **772-972** reg. \$8 **\$5.39**



### Physiogel Daily Moisture Therapy Facial Cream\*

For normal to dry sensitive skin. 5.1 fl. oz. **847-511** reg. \$42 **\$33.49**



### Physiogel Daily Moisture Therapy Dermo-Cleanser for face

Soap-free facial cleanser for dry and sensitive skin. 5 fl. oz. **094-384** reg. \$24 **\$18.99**



\*The National Eczema Association has awarded the Seal of Acceptance™ to Physiogel Hypoallergenic Daily Moisture Therapy Facial Cream.



### Microbiome Balance + Soothe Body Lotion

Skin looks softer and healthier. 13.2 fl. oz. **438-082** reg. \$25 **\$20**

### Microbiome Balance + Soothe Body Wash

Softens as it gently cleanses. 13.2 fl. oz. **438-078** reg. \$23 **\$18**



### Avon Microbiome by REACH® Hygiene Deodorant Stick

Floral citrus scent. Aluminum-free. 24-hour odor protection. 2.65 oz. net wt. **524-528** reg. \$13 **\$10.99**





**Body Massager**

Helps stimulate circulation and relieve tension in muscles, especially in back and limbs. Fits into palm for easy control and flexibility with customizable pressure.  
**439-920**  
 reg. \$11  
**\$8.99**



**Exfoliation Mitt**

Helps remove dead skin, and keeps skin feeling soft and smooth. Microfiber jacquard, with nylon spandex cuff.  
**439-734**  
 reg. \$11  
**\$8.99**



# recharge

**Avon Aromatherapy Body Lotion Bright Day Ahead**  
 Charge your day with positive energy. With citrus and ginger fragrance oils to uplift your mood. 5.8 fl. oz.  
**584-670**  
 reg. \$17  
**\$13.99**

# refresh

**Avon Aromatherapy Body Lotion Bye-Bye Stress**  
 Take a moment to de-stress. With refreshing spearmint and eucalyptus fragrance oils for stress relief and mental clarity. 5.8 fl. oz.  
**584-684**  
 reg. \$17  
**\$13.99**

# relax

**Avon Aromatherapy Body Lotion Sleep Tight Zzz**  
 Unwind after a long day. With rose and lavender fragrance oils to help promote a restful sleep. 5.8 fl. oz.  
**584-866**  
 reg. \$17  
**\$13.99**

**Avon Aromatherapy Minding My Mood 4-in-1 Essential Oil Blends**  
 Natural multipurpose fragrance oils. Each, 1.7 fl. oz.  
**606-376**  
 reg. \$32  
**\$25.99**  
 boxed set of 2

**Energize**  
 With lively mandarin and stimulating ylang-ylang.

**Calm**  
 With comforting lavender and soothing star anise.



**Veilment CBD Dry Body Oil**  
 Lightweight. Nongreasy. Quickly nourishes skin with instantly replenishing hydration while it helps reduce redness and soothe irritation so skin looks healthy and radiant. Free of fragrance, mineral oil, parabens, phthalates and THC. 3.73 fl. oz. **869-485** reg. \$37 **\$30**



**Veilment CBD Nourishing Body Cream**  
 Skin feels soft, smooth and nourished. Jasmine scent. No THC. 5 fl. oz. **524-513** reg. \$33 **\$29.50**



**Veilment CBD Nourishing Body Cream (Tube)**  
 Same formula as original, now in a convenient tube. Skin feels soft, smooth and nourished. Jasmine scent. No THC. 6.7 fl. oz. **254-229** reg. \$38 **\$33**



**Veilment CBD Soothing & Nourishing Body Cream**  
 Concentrated formula. Visibly soothes and smooths. Geranium scent. No THC. 1.7 fl. oz. **524-509** reg. \$33 **\$29.50**



**Veilment Hemp Seed Oil Dry Body Oil**  
 Light, easily absorbed. Helps deeply nourish and hydrate dry and irritated skin. Fragrance-free. Hypoallergenic. 5 fl. oz. **564-106** reg. \$35 **\$28**



**Veilment Lumière Sunless Tanning Serum**  
 Mix and blend into daily body moisturizer for a customized, natural glow. Suitable for different skin tones. With skin-nourishing hemp seed oil. Each, 1.01 fl. oz. reg. \$24 **\$19.99 each**



Light/Medium 422-307

Medium/Dark 422-326

**Introducing an innovative exfoliating body wash that cools and refreshes with an ultimate veil of moisture**

**Glacial Water**

**Cooling Body Scrub & Cleanser**

Fresh Canadian glacial water with gently exfoliating apricot seed, moisturizing ceramides, cooling menthol and a clean peppermint scent. 13.5 fl. oz. **735-399**  
reg. \$15  
**\$13.69**



**HIMALAYA PINK SALT**

Calming sage scent.

**Exfoliating Soap**

Daily body scrub and cleansing bar with Himalayan pink salt, walnut shell, apricot seed and cranberry powder. 5.3 oz. net wt.  
**260-440** reg. \$8  
**\$6**

**Body Scrub & Cleanser**

Himalayan pink salt. 13.5 fl. oz.  
**708-252** reg. \$15  
**\$13.69**



**Dead Sea Salt**

**Body Scrub & Cleanser**

Israeli Dead Sea salt. Energizing citrus-ginger scent. 13.5 fl. oz.  
**707-988**  
reg. \$15  
**\$13.69**



**Black Rose**

**Body Scrub & Cleanser**

French rose oil and apricot-seed powder. Aromatic black rose scent. 13.5 fl. oz.  
**707-969**  
reg. \$15  
**\$13.69**





- **protects against** mosquitoes, deer ticks, no-see-ums, sandflies, gnats and biting midges
- **repels deer ticks** that may carry and transmit Lyme disease
- **DEET-free/PABA-free**
- **water-resistant**
- **SPF 28 & SPF 30**

## Expedition for all-in-one protection from sun+bugs

### BUG GUARD PLUS IR3535® EXPEDITION

No need to wash off.  
Dermatologist-tested.

#### A. Aerosol Spray SPF 28

Repels mosquitoes for 8 hours, deer ticks for 12 hours.  
4 oz. net wt.  
521-370 reg. \$20  
**\$14.99**

#### B. Family-Size Pump Spray SPF 30

8 fl. oz. 255-259  
reg. \$24  
**\$17.99**

#### C. Pump Spray SPF 30

Repels mosquitoes for 8 hours, deer ticks for 10 hours.  
4 fl. oz. 255-278 reg. \$15  
**\$9.99**



Read and follow label directions and precautions.



## Gentle Breeze protects against sun+bugs+water

- **SPF 30**
- **water-resistant**
- **DEET-free/PABA-free**
- **with vitamin E & aloe**
- **repels mosquitoes** that may carry and transmit the Zika virus

### BUG GUARD PLUS IR3535® GENTLE BREEZE SPF 30 LOTION

No need to wash off.  
Dermatologist-tested.  
4 fl. oz. 851-324  
reg. \$15  
**\$9.99**





- **protects against** mosquitoes, deer ticks, sandflies, no-see-ums, gnats, biting midges and black flies
- **repels deer ticks** that may carry and transmit Lyme disease
- **DEET-free/PABA-free**
- **with vitamin E & aloe**



**Anti-Itch Spray\***  
Provides temporary itch relief from insect bites.  
2 fl. oz. **972-031** reg. \$11  
**\$7.69**

\*Does not repel insects.

## Picaridin for when bugs are most active dawn+dusk



### BUG GUARD PLUS PICARIDIN

**A. Travel Size Pump Spray**  
2 fl. oz. **009-600**  
reg. \$12  
**\$8.99**

**B. Pump Spray**  
Repels mosquitoes for 8 hours, deer ticks for 12 hours. 4 fl. oz.  
**255-373** reg. \$15  
**\$9.99**

**C. Family-Size Pump Spray**  
8 fl. oz. **255-187**  
reg. \$24  
**\$17.99**

**D. Towelettes**  
Repels mosquitoes for 8 hours, deer ticks for 12 hours. Resealable bag holds 8 packets. Each towelette, 9" L x 5 1/2" W. Each, .3 fl. oz.  
**269-562** reg. \$16  
**\$11.69** pack of 8

**E. Aerosol Spray\*\***  
Repels mosquitoes for 6 hours, deer ticks for 7 hours. 4 oz. net wt.  
**315-243** reg. \$20  
**\$14.99**

Read and follow label directions and precautions. \*\*Aerosol Spray does not contain aloe.

## FOOT WORKS

### Overnight Renewing Cream

3.4 fl. oz.  
295-205  
reg. \$9  
**\$5.99**



### Deep Moisturizing Cream

2.5 fl. oz.  
308-962  
reg. \$6  
**\$4.69**



### Intensive Moisture Foot Cream

Suitable for diabetics.  
2.5 fl. oz.  
302-012  
reg. \$6  
**\$4.99**



### Foot Works Intensive Callus Cream

3.4 fl. oz.  
851-310  
reg. \$7  
**\$5.99**



### Maximum Strength Cracked Heel Cream

2.5 fl. oz.  
310-404  
reg. \$7  
**\$5.99**



### Arthritis Achy Foot and Muscle Cream

2.5 fl. oz.  
314-194  
reg. \$7  
**\$5.99**



### Deodorizing Spray

Can also be used in footwear.  
3.5 oz. net wt.  
313-236  
reg. \$10  
**\$7.99**



### Pedicure Kit

Case, 3 1/2" L x 4 3/4" W. Metal, man-made materials. Includes: nail clipper, toenail clipper, nail file, scissors, cuticle pusher.  
121-029  
reg. \$11  
**\$8.39**



### Pedicure Tool

4-in-1 tool! Plastic.  
3 1/8" L x 1 3/4" W x 1 1/2" H.  
Includes: fine-grain file, metal file, pumice, brush.  
592-712 reg. \$11  
**\$8.39**



# DEODORANTS

## Roll-On Anti-Perspirant Deodorant

Each, 2.6 fl. oz. reg. \$3.60  
**\$2.69 each**



Candid  
**656-095**  
 Far Away  
**836-226**  
 Haiku  
**836-264**  
 Imari  
**180-887**  
 Rare Gold  
**836-250**  
 Rare Pearls  
**836-245**  
 Night Magic  
 Evening Musk  
**836-298**  
 Odyssey  
**836-317**  
 Sweet Honesty  
**941-579**  
 Timeless  
**941-583**



On Duty Unscented  
**926-820**  
 On Duty Sport  
**094-365**  
 On Duty Original  
**393-970**  
 Cool Confidence Original  
**926-777**  
 Cool Confidence Baby Powder  
**926-815**  
 Feelin' Fresh Original  
**925-546**

Black Suede  
**337-403**  
 Mesmerize  
**663-442**  
 Wild Country  
**941-602**

**Perfumed Liquid Deodorant**  
 Soft floral scent.  
 2 fl. oz.  
**687-681**  
 reg. \$6  
**\$4.50**



REACH® & LISTERINE® FLOSS always remember to floss!



**LISTERINE®  
Ultraclean® Access® Flosser**  
Long ergonomic handle  
with nonslip grip. Unflavored  
floss heads. 239-360 reg. \$6  
**\$4.79**  
includes 8 floss heads



**LISTERINE®  
Ultraclean® Access®  
Mint Flosser Refill**  
Disposable mint-flavored floss  
heads. For use with the  
**LISTERINE® Ultraclean®  
Access® Flosser. 239-374**  
reg. \$7  
**\$5.64 pack of 28**

**LISTERINE®  
Ultraclean® Access®  
Unflavored Flosser Refill**  
Disposable unflavored floss  
heads. For use with the  
**LISTERINE® Ultraclean®  
Access® Flosser. 239-393**  
reg. \$7  
**\$5.64 pack of 28**



**REACH®  
Unflavored Waxed Floss**  
Accepted by the American  
Dental Association.  
55 yards. 239-317  
reg. \$3  
**\$1.99**



**LISTERINE®  
Cool Mint™ Floss**  
Waxed coating is shred-  
resistant. Mint flavor for  
the feeling of clean, fresh  
breath. 55 yards.  
239-355  
reg. \$5  
**\$3.99**



**LISTERINE®  
Ultraclean® Mint Floss**  
With patented MICRO  
GROOVES® technology for  
greater plaque removal and  
superior cleaning. 30 yards.  
239-321  
reg. \$5  
**\$3.99**



**REACH® Interdental Brush**

Angled 14°, like dental tools. Helps clean hard-to-reach spots, including back corners. Removes up to 30% more plaque compared to brushing alone! Customized for different spaces between teeth. Specially coated wire for gum protection. Ribbed edge for a better grip. **reg. \$5 \$3.99 each**



**WIDE** Pack of 10 **630-164**  
**TIGHT** Pack of 10 **630-934**  
**EXTRA TIGHT** Pack of 10 **630-236**

**REACH® Professional Floss Picks**

Acute angle (14°), like dental tools, for better reach. Sturdy pick easily fits between teeth. Dented handle for a better grip. Mint flavor. Pack of 90. **630-179 reg. \$6 \$4.59 pack of 90**



**GOOD VIBES TO GO**

**Perioe Dual Sonic Portable Electric Toothbrush**



MICRO AND GENERAL BRISTLES FOR EXCEPTIONAL CLEANING

TWO-MINUTE TIMER WITH 30-SECOND INTERVALS/AUTO OFF FUNCTION

LONG HANDLE COMFORT GRIP

HYGIENIC CAP FOR ON-THE-GO CONVENIENCE!

❖ **Perioe Dual Sonic Portable Electric Toothbrush**

Battery powered—great on the go! Adjustable dual mode (strong/gentle). Up to 27,000 vibrations per minute. Four replaceable brush heads. AAA alkaline replaceable battery included. **432-376 reg. \$45 \$36.99 4 brush heads**

❖ **Perioe Dual Sonic Portable Electric Toothbrush Refillable Heads**

Mix of four types of bristles targets different areas: molar, teeth surface, interdental, gum. Replace heads every three months. **433-430 reg. \$12 \$9.99 includes 2 brush heads**



# ELASTINE SALON DE COLOR



**100% grey coverage and rich, long-lasting color...** without ammonia, parabens, mineral oil or benzophenone. For your most luxurious locks and healthy-looking hair. **No appointment necessary.**

**Elastine Salon de Color**  
reg. \$9.99  
**\$7.99 each**



## BROWNS

Make faded brown color vibrant!

### 4 / Dark Brown 038-568



### 4B / Dark Chocolate Brown 039-727



### 5CB / Medium Chestnut Brown 040-110



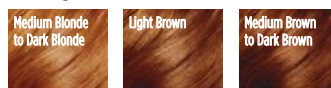
## REDS & AUBURNS

Refresh, brighten or deepen color.

### 4R / Dark Mahogany Red 039-750



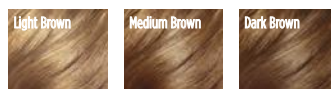
### 6R / Light Auburn 044-608



## BLONDES

Lighten roots or completely color.

### 7BL / Natural Dark Blonde 047-827



## BLACKS

Make an impact for a dramatic look.

### 2 / Soft Black 038-553



## COLOR VIBE / ROOT TOUCH-UP / ADVANCE TECHNIQUES



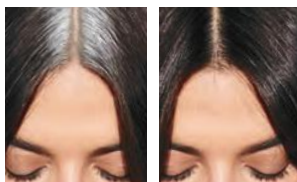
Visibly **repair damaged hair**. Keep it looking **vivid** and **brass-free** with healthy **shine**.

### Elastine Salon de Color Color Vibe

Nonirritating formula, suitable for any hair/scalp type.  
Purple Shampoo **436-109**  
Purple Conditioner **436-955**  
Each, 8.4 fl. oz. reg. \$17  
**\$13.99 each**



### SIMULATION



BEFORE

AFTER

**Root Touch-Up**  
An instant way to cover up your roots and bare spots. Built-in mirror. Each, .25 oz. net wt. reg. \$18  
**\$15.99 each**



Reddish Brown  
243-627

Light Brown  
244-642

Dark Brown  
245-213

Black  
245-251

**Advance Techniques 360 Nourish with Moroccan Argan Oil Leave-In Treatment**  
Moisturizes dry, damaged hair. Infuses it with instant shine and silky smoothness.  
2 fl. oz.  
**511-411**  
reg. \$16  
**\$11.69**



**Advance Techniques Dry Ends Serum**  
Helps mend and nourish split ends instantly. With pro-vitamin B. Hair looks smooth and silky.  
2 fl. oz. **883-261**  
reg. \$11  
**\$7.99**



**Advance Techniques Daily Shine 2-in-1 Shampoo & Conditioner**  
Leaves hair feeling clean, conditioned and frizz-free. Suitable for daily use.  
11.8 fl. oz.  
**803-230**  
reg. \$11  
**\$8.99**



## ELASTINE PROPOLITHERA / BEE CURLY

### ELASTINE PROPOLITHERA

#### Volumizing

Enhances texture so hair looks fuller, thicker, stronger. Each, 16.9 fl. oz.

**A.** Shampoo

**892-607**

**B.** Conditioner

**892-870**

#### Damage Repair

Helps hair appear smooth and manageable.

Each, 16.9 fl. oz.

**C.** Shampoo

**053-082**

**D.** Conditioner

**638-681**

#### E. Hair Oil Serum

Helps to strengthen, protect, moisturize and smooth hair, and to add shine while styling.

5.7 fl. oz. **895-190**

#### F. Hair Mask

Enriched with nutrients to help deeply nourish hair and mend damaged split ends.

10.1 fl. oz.

**150-301**

reg. \$18

**\$15.99 each**



### ELASTINE PROPOLITHERA BEE CURLY

A patented technology\* that helps care for curly hair to create silky, super-lustrous curls even after the first use.

#### Shampoo

16.9 fl. oz.

**059-975**

reg. \$29

**\$23.99**



#### Conditioner

16.9 fl. oz.

**060-846**

reg. \$29

**\$23.99**



#### Serum

5.7 fl. oz.

**061-565**

reg. \$29

**\$23.99**



\*Shampoo and conditioner only.

## ELASTINE PROPOLITHERA REJUVENATING styling boosters

### Aloe Dual-Active Hair Serum

Intense hydration with vitamins, minerals and other nutrients to bring damaged or chemically processed hair back to life.

3.4 fl. oz.  
**102-585**  
 reg. \$30  
**\$25**



### Leave-In Conditioner

Hydrates and nourishes dry hair, infusing it with rich luster.

8.1 fl. oz.  
**102-570**  
 reg. \$19  
**\$15**



### Serum Treatment

Upon contact with water, nutrient-rich, moisturizing liquid visibly transforms into a creamy formula. 7.8 fl. oz.

**359-821**  
 reg. \$22  
**\$18**



### Curl Cream

Rich hydration for bouncy, defined curls. Reduces frizz for a smooth, healthy-looking shine. 5 fl. oz.

**102-475**  
 reg. \$19  
**\$15**



Rejuvenating hair treatment for a lustrous-looking shine enriched with **GOLD-Polypeptide Protein Complex** to help repair and strengthen damaged hair and keep it looking silky smooth and voluminous.

### Hair Deep Conditioning Treatment Cap

Nourishing deep-conditioning treatment mask replenishes moisture in one cap application. With the bee goodness of propolis (tree sap and beeswax), honey and royal jelly for healthy-looking body and shine. Berry, rose and peony scent. Use as needed. Single-use cap. 1.4 oz. net wt.

**053-761**  
 reg. \$8  
**\$6.99**



**1** After shampooing, remove excess water. Cover all hair with cap.



**2** Adjust cap to size of your head.



**3** Lightly massage for even absorption of nutrients.



**4** Remove cap after 10-15 minutes. Rinse thoroughly.

# ELASTINE HempharmX / CBD / Perfume 2-in-1 Shampoo & Conditioner

**Elastine HempharmX**  
Shampoo and conditioner with cold-extracted hemp seed oil. Vegan formulas. Both silicone-free. Shampoo is sulfate-free.

**Hydrating Shampoo**  
359-836  
**Hydrating Conditioner**  
360-544  
Each, 13.5 fl. oz.  
reg. \$24  
**\$20 each**



**Elastine CBD & Hemp Seed Oil Cooling & Soothing Conditioner**  
Helps moisturize dry hair. Free from parabens and sulfates. No THC.  
11.8 fl. oz.  
**436-989**  
reg. \$23  
**\$19**



**Elastine Perfume 2-in-1 Shampoo & Conditioner**  
With patented technology, moisturizes hair while controlling odor with a fragranced formula. Free of sulfates and parabens. Suitable for daily use.

**Love Me**  
Jasmine and ylang-ylang. 8.4 fl. oz.  
**154-857** reg. \$16  
**\$12.99**

**Fresh Citrus**  
Lime, mandarin and basil. 8.4 fl. oz.  
**154-876** reg. \$16  
**\$12.99**

**Pure Breeze**  
White rose and Bulgarian rose. 8.4 fl. oz.  
**154-861** reg. \$16  
**\$12.99**



# STYLING BRUSH-UP

for all hair types

**NEW**

**Avon  
Detangling  
Comb**

Glides through wet or dry hair without tugging or pulling.

**504-820**  
reg. \$5.99  
**\$4.99**



**NEW**

**Avon  
Blow-Dry  
Round  
Hairbrush**

Smooth and straighten, or curl and wave. Easy, painless styling with comfort handle.

**504-800**  
reg. \$17.99  
**\$14.99**



**NEW**

**Avon  
Detangling  
Hairbrush**

Flexible bristles move through knots and tangles and minimize pain and split ends.

**504-815**  
reg. \$12.99  
**\$9.99**



**NEW**

**Avon  
Compact  
Hairbrush**

Pop it in your purse and go. Use on wet or dry hair.

**504-743**  
reg. \$9.99  
**\$7.99**

## CHI® ESSENTIALS / CHI® ESSENTIALS REVIVE KERATIN + BONDING

### CHI® Essentials Replenishing Shampoo

Gentle daily shampoo with essential vitamins, minerals and amino acids. No sulfates or parabens, so it won't strip hair of natural oils. Safe for color-treated hair.

12 fl. oz.  
589-140  
reg. \$20  
\$16.99



### CHI® Essentials Moisturizing Conditioner

Lightweight daily conditioner. Infused with aloe to lock in rich moisture. With vitamins A and B to help strengthen hair from roots to ends, increase elasticity and help smooth split ends and frizz.

12 fl. oz.  
589-409  
reg. \$20  
\$16.99



### CHI® Essentials Repairing Serum

Deeply penetrating-yet-lightweight serum helps strengthen, protect, moisturize and smooth. With vitamin A to help seal split ends, and rosemary to help boost volume and shine.

6 fl. oz. 589-413  
reg. \$33  
\$27.59



### CHI® Essentials Revive Keratin + Bonding Restoring Shampoo

Cleanses, moisturizes and protects against split ends and frizz.

12 fl. oz. 451-192  
reg. \$25  
\$19.99

### CHI® Essentials Revive Keratin + Bonding Protecting Serum

Apply to damp or dry hair for smoothness and shine, and as a hair shield from the sun.

3 fl. oz. 451-340  
reg. \$42  
\$34.99

### CHI® Essentials Revive Keratin + Bonding Restoring Conditioner

Helps restore dry, damaged and brittle hair.

12 fl. oz. 451-211  
reg. \$25  
\$19.99





## CHI® PRO STYLERS & TOOLS for salon-quality results

### CHI® ENVIRO 54® Natural Hold Hair Spray

For brushable hold.  
Lightweight. Fast-drying.  
No build-up. Anti-humidity.  
Thermal protectant for  
blow-drying. With silk  
to help build hair's  
strength and resilience,  
and natural botanicals  
to add volume and  
enhance shine.  
Paraben-free.  
10 oz. net wt.  
**908-450**  
reg. \$26.50  
**\$21.50**



### BioSilk® Silk Therapy®

Replenishes and reconstructs to help  
repair and protect all hair types. Tames  
frizz and flyaways and leaves hair silky  
smooth with reflective shine. Helps  
shield hair from UV rays, heat and  
humidity. 5.64 fl. oz.

**011-349**  
reg. \$35  
**\$28.99**



### CHI® 1\"/>

Ceramic Pro Spin 'n' Curl  
Preset temperature  
controls with adjustable  
timers and LED screen  
display. For any hair type.  
12\"/>

Use only as directed.  
**471-527**  
reg. \$199  
**\$179**

### ATTACHMENTS INCLUDED



### CHI® Advanced Ionic Compact Hair Dryer

Powerful 1875-watt ion  
generator emits negative  
ions to reduce drying time.  
Lightweight, compact  
design. Rapid Clean  
Technology with Blue LED  
light for cleaner air during  
styling. Adjustable heat and  
air-speed settings. Removable  
filter. 6½ ft. cord. Use only as  
directed. **471-474** reg. \$150  
**\$135**



## DR. GROOT / MOISTURE ESSENTIALS



### Premium Scalp Cleansing Brush

Helps promote cleansing of residue while massaging to reinvigorate health of scalp as it helps to stimulate circulation.  
**065-776 reg. \$19**  
**\$16**



### Scalp Fortifying Hair-Thickening Shampoo

With coconut oil, cleanses as it helps moisturize dry scalp and hair.  
 13.5 fl. oz.  
**778-014**  
**reg. \$35**  
**\$29**



### Scalp Fortifying Serum Treatment

Moisturizes and helps support healthy hair roots and growth.  
 6.7 fl. oz.  
**782-271**  
**reg. \$35**  
**\$29**



### Anti-Dandruff Scalp Care 2-in-1 Shampoo & Conditioner

10.1 fl. oz.  
**451-431**  
**reg. \$27**  
**\$21.99**



### Anti-Dandruff Scalp Care Shampoo

No silicones.  
 10.1 fl. oz.  
**451-412**  
**reg. \$27**  
**\$21.99**



### Elastine Moisture Essentials

With richly moisturizing ceramide to help visibly strengthen strands, protect hair from wear and tear, and promote elasticity and shine.

**ceramide + biotin**  
**Shampoo**  
**495-106**  
**Conditioner**  
**495-110**  
 Each,  
 12.7 fl. oz.  
**reg. \$9**  
**\$6.99**  
**each**



**ceramide + argan oil**  
**Shampoo**  
**495-125**  
**Conditioner**  
**495-130**  
 Each,  
 12.7 fl. oz.  
**reg. \$9**  
**\$6.99**  
**each**



## want volume?

### Rosemary & Sea Salt

With rosemary to help promote thicker hair and scalp health, sea salt to add body.

**Volumizing Shampoo 240-556**

**Volumizing Conditioner 246-831**

Each, 6.7 fl. oz.

reg. \$4.50

**\$3.79**

each



# Elastine Botanicals

Infused with revitalizing babassu seed oil, chamomile flower water and lemon chestnut extract, and pH balanced, like healthy hair, it helps bring damaged hair back to life, adding dewy moisture for a smooth, natural-looking sheen.

NO • Parabens • Silicone • Mineral oil  
• Triclocarban • Triclosan

## dry hair?

### Cherry Blossom & Hyaluronic Acid

Moisturize dry, damaged hair with our hyaluronic acid-infused formula as thirsty strands drink it up.

**Moisturizing Shampoo 239-943**

**Moisturizing Conditioner 240-059**

Each, 6.7 fl. oz.

reg. \$4.50

**\$3.79**

each



## frizzy hair?

### Argan & Castor

With nourishing ingredients, helps protect hair from damage and breakage. Adds luster and smoothness.

**Anti-Frizz Shampoo 150-866**

**Anti-Frizz Conditioner 150-904**

Each, 6.7 fl. oz.

reg. \$5.39

**\$4.49**

each



# heading home for THE HOLIDAYS

BEAUTY WEEKENDER COLLECTION  
4-piece set only \$29.99  
with any \$15 Brochure purchase  
542-018

**Holiday Exclusive! Weekender Travel Bag**  
Body: 100% nylon; Coating: 100% PVC; Handles:  
100% polyester. 21<sup>5</sup>/<sub>8</sub>" x 13<sup>3</sup>/<sub>8</sub>" x 6<sup>1</sup>/<sub>2</sub>" with a  
9" handle drop. Imported. **\$49.99 value**

**Isa Knox Anew Clinical  
Line Eraser with Retinol Treatment**  
1 oz. net wt. **\$45 value**

**Isa Knox Anew Clinical  
Collagen Booster Eye Lift Pro Dual Eye System**  
Gel, .33 fl. oz.; Cream, .33 fl. oz.  
**\$40 value**

**Rice Water Bright Foaming Cleanser**  
5 fl. oz. **\$8 value**

**\$142.99**

if collection purchased separately.\*  
This Brochure only. Limited quantities.

\*Beauty Weekender  
Collection purchase  
does not qualify  
toward this or any  
other offer.

Enjoy special prices  
and offers with an  
Avon account or  
Representative.



Adjustable shoulder strap



Back sleeve slips  
over luggage handle

© 2023 The Avon Company. All rights reserved.

CAMPAIGN 23, 2023  
THE AVON COMPANY  
165 BROADWAY, NY, NY 10006

To place an order, call:



Pk of 10 59364-9



Single 59362-9

Brochure effective until \_\_\_\_\_

Find me at [www.avon.com/repstore/](http://www.avon.com/repstore/) \_\_\_\_\_



Not applicable in  
Puerto Rico or  
the Caribbean.



See our commitment at  
[www.avon.com/animal-welfare](http://www.avon.com/animal-welfare)

**RETURN POLICY** If you are not satisfied, return any item within 45 days. View Avon's full 45-Day Return Policy at [avon.com/shipping-returns](http://avon.com/shipping-returns).