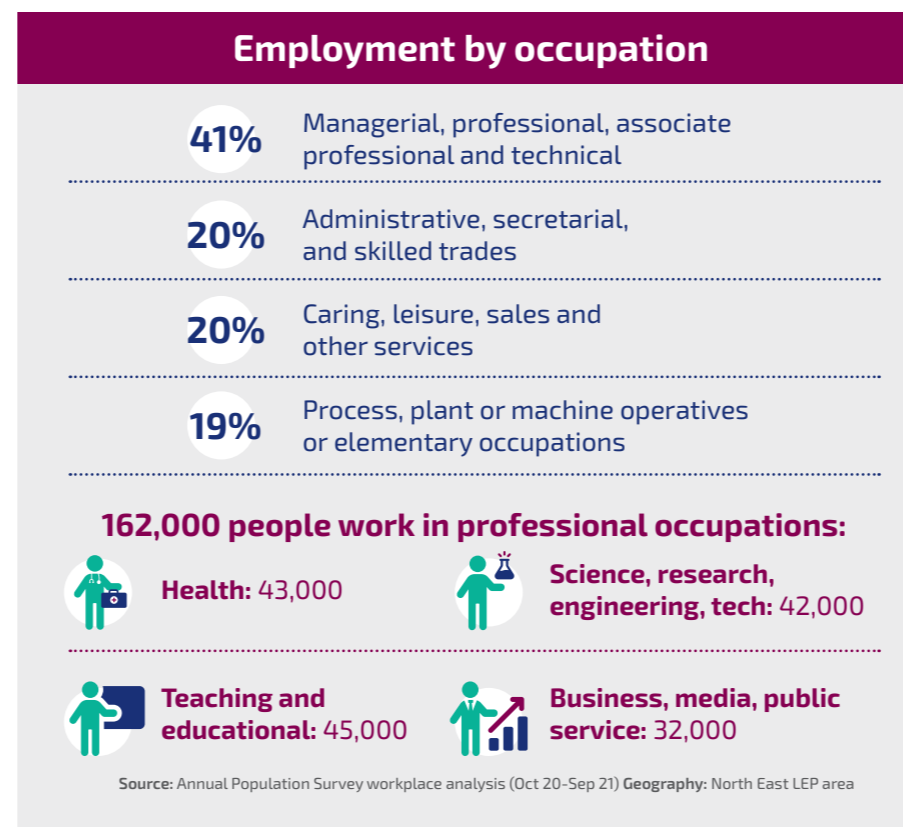
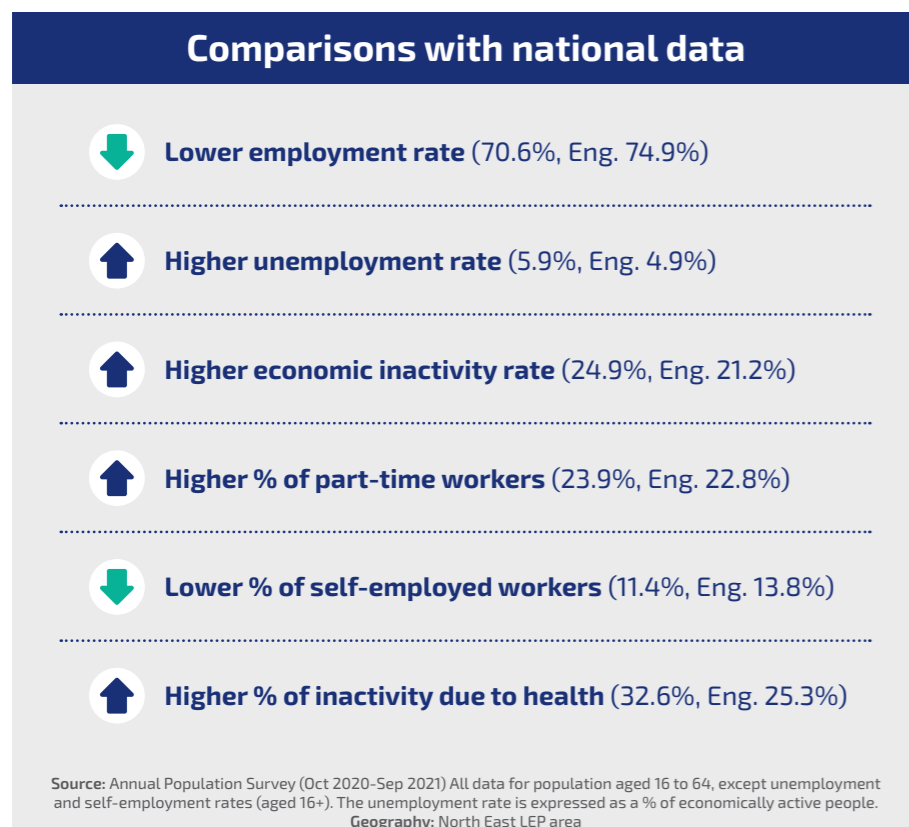
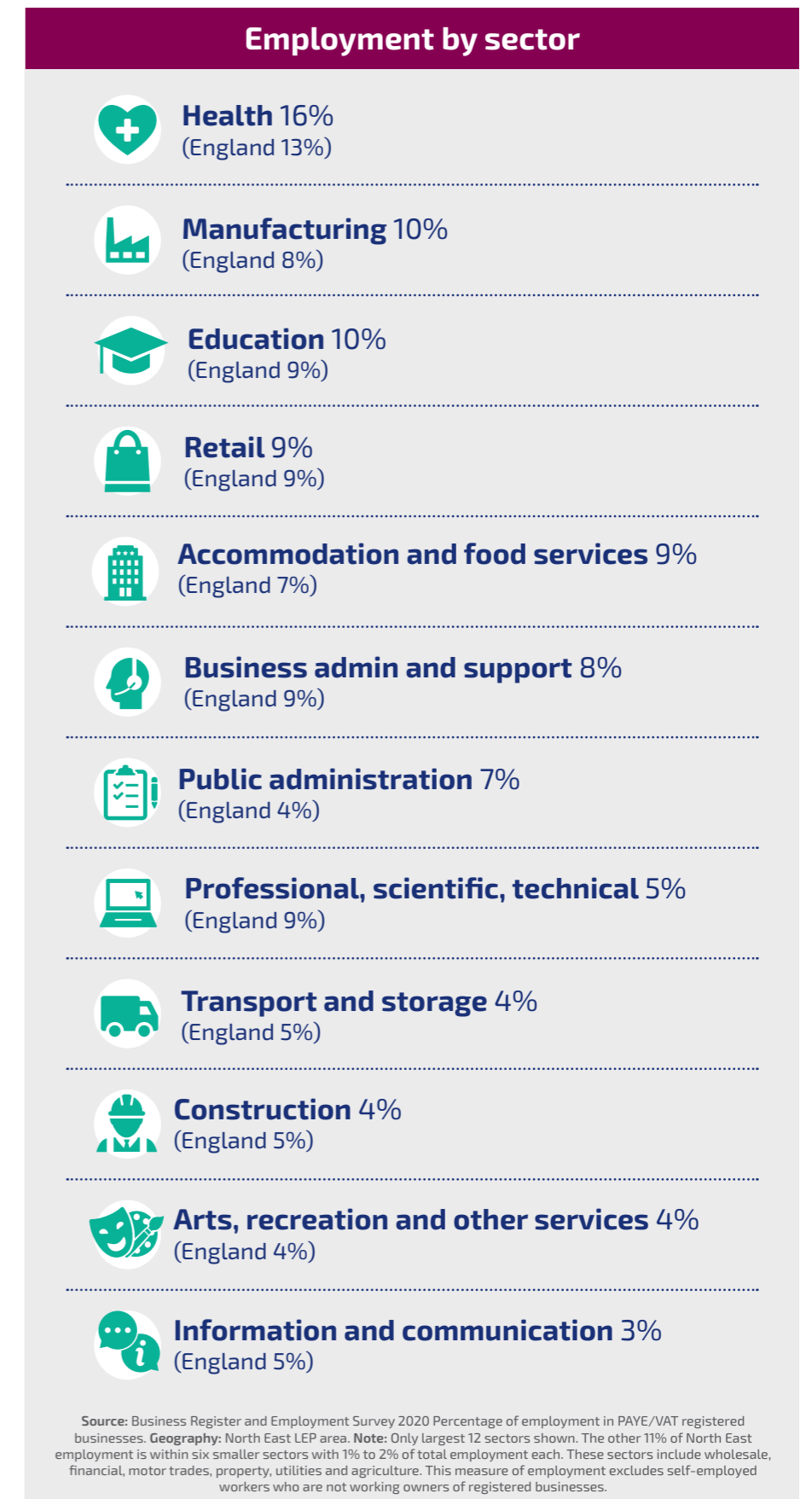
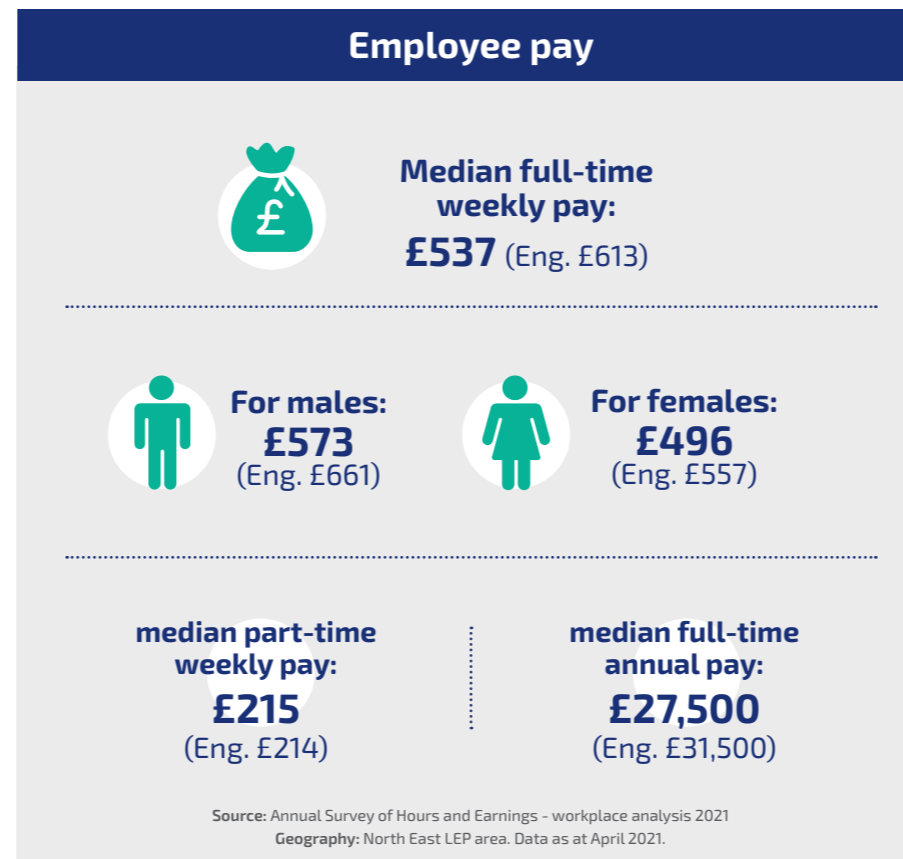
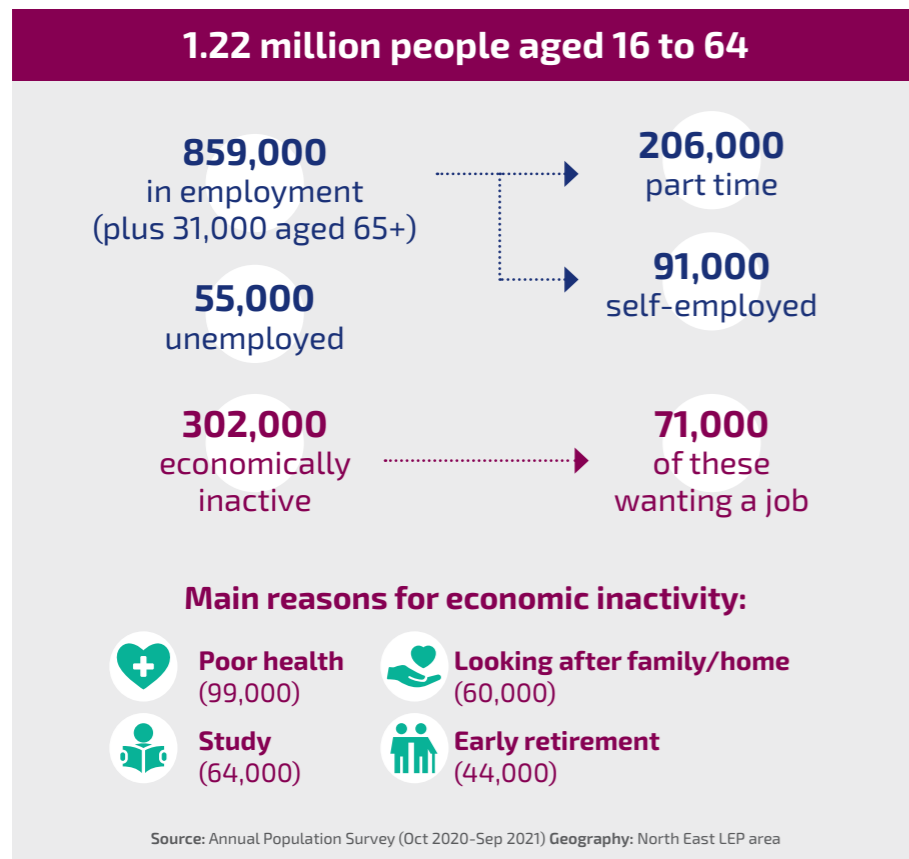


# The North East labour market



## Priority sectors

The North East LEP, the regional economic development body, has defined four areas of strategic importance:



Digital



Advanced manufacturing



Health and life sciences



Energy

These areas of strategic importance employ almost **100,000 people**. They include over **7,300 businesses**, about 6% more than in 2015.

A further **250,000** people work in four enabling services that support the growth of the North East economy:



Construction



Education



Financial, professional, and business services



Transport and logistics

Sources: Business Register Employment Survey 2020 and UK Business Count 2021. Data relates to VAT and PAYE registered businesses only, sector definitions based on 5 digit SIC codes selected by the North East LEP.

## Future sector requirements

**Over 400,000 extra workers required by 2027**

**142,000** Health, education, and public administration

**118,000** Business, arts, recreation, and personal services

**101,000** Retail, hospitality and transport

**21,000** Manufacturing      **18,000** Construction

**6,000** Other, inc. agriculture and utilities

Source: IER Working Futures 2017-2027. Inc replacing retired workers  
Geography: North East Region (North East & Tees Valley LEP areas)  
Note: Projected ten year net changes 2017-2027, based on projections made before the onset of COVID-19

## Future occupational requirements



**Over 400,000 extra workers required by 2027:**

**44,000** Managers, directors and senior officials

**101,000** Professional occupations

**55,000** Associate professional and technical

**24,000** Administrative and secretarial

**21,000** Skilled trades occupations

**58,000** Caring, leisure and other services

**47,000** Sales and customer service

**13,000** Process, plant and machine operatives

**44,000** Elementary occupations

Source: IER Working Futures 2017-2027. Inc replacing retired workers  
Geography: North East Region (North East and Tees Valley LEP areas)  
Note: Projected ten year net changes 2017-2027, based on projections made before the onset of COVID-19

## Vacancies

**1.25 million UK job vacancies in the fourth quarter of 2021**

More than doubled since a year earlier the highest total since the dataset began in 2001 equivalent to 4.1 vacancies per 100 employee jobs up from a low of 1.1 in Apr-Jun 2020.

Vacancy rate highest in:

-  **Accommodation and food services (7.4)**
-  **Information and communication (5.5)**
-  **Health and social work (5.1)**
-  **Arts, entertainment and recreation (4.7)**
-  **Professional scientific and technical (4.6)**

Source: ONS Vacancy Survey Oct-Dec 2021 Geography: UK level data only

## Job adverts

**7,800 jobs advertised on the DWP find a job website (January 2022)**

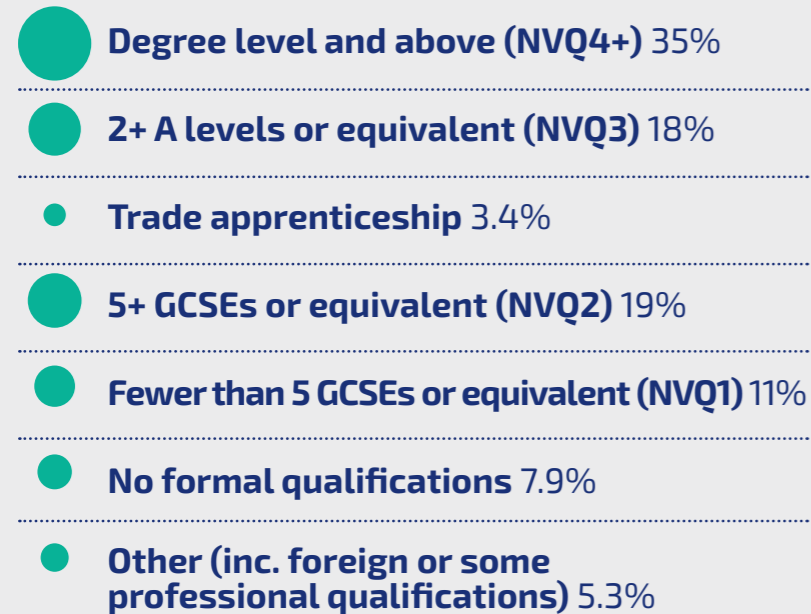
Sectors with most jobs available:

- 1. Healthcare and Nursing 24%**
- 2. Administration 8%**
- 3. Social Work 6%**
- 4. Hospitality and Catering 6%**
- 5. Retail 5%**
- 6. HR and Recruitment 5%**
- 7. Teaching 4%**
- 8. Trade and Construction 3%**
- 9. Logistics and Warehouse 3%**
- 10. Engineering 3%**

Source: DWP Find a Job website (21 Jan 2022)

### Highest level of qualification

The 1.22 million people aged 16 to 64 have the following proportions by highest level of qualification:



Source: Annual Population Survey (Jan 2020 – Dec 2020) All data for population aged 16 to 64. Geography: North East LEP area

### Key stage 4 destinations

**92%** of North East pupils who completed key stage 4 in 2018/19 went into sustained education, employment and apprenticeships. (England 94%)

**83%** were in sustained education (England 87%)

**5.5%** were in sustained apprenticeships (England 3.7%)

**3.5%** were in sustained employment (England 3.2%)

Source: KS4 destination measures, DfE, 2019/20 (published Oct 2021), Geography: North East LEP area, sum of Local Authority level data. Note: These headline statistics relate to pupils from state-funded mainstream schools.

### Apprenticeship outcomes

**90%** 91% of North East learners who achieved an apprenticeship in 2018/19 went into a sustained positive destination. (England 91%)

**71%** went into employment only (England 73%)

**18%** went into a combination of employment and learning (England 16%)

**2%** went into learning only (England 2%)

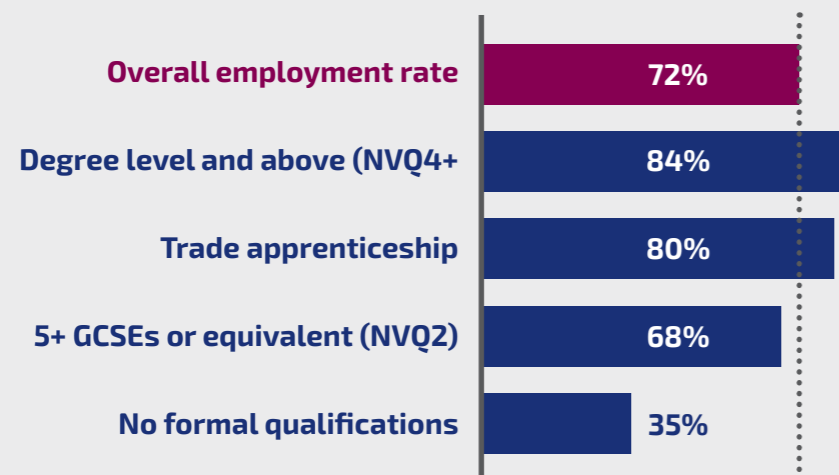
There was little variation in the North East percentage going into a sustained positive destination by level of apprenticeship:



Source: FE outcome based success measures, 2018/19 destinations, DfE, (published Dec 2021), next update due Oct 2022. Geography: North East LEP area. Note: To be counted as being sustained, learning or employment has to have been for six months. All percentages rounded to the nearest whole so they may not sum to published totals.

### Employment by qualification level

In 2020, the North East employment rate among 16 to 64 year olds varied by highest level of qualification:



Source: Annual Population Survey (Jan 2020 – Dec 2020) All data for population aged 16 to 64. Geography: North East LEP area Note: Data only available for calendar years.

### Adult education and training destinations

**69%** of North East learners who achieved an education and training course as their highest learning aim in 2018/19 went into a sustained positive destination. (England 72%)

**51%** went into employment only (England 48%)

**9%** went into a combination of employment and learning (England 12%)

**9%** went into learning only (England 12%)

**64%** of North East learners who completed a traineeship in 2018/19 went into a sustained positive destination. (England 63%)

**22%** went into employment only

**27%** went into a combination of employment and learning

**14%** went into learning only

Source: FE outcome based success measures, 2018/19 destinations, DfE, (published Dec 2021), next update due Oct 2022. Geography: North East LEP area. Note: To be counted as being sustained, learning or employment has to have been for six months. All percentages rounded to the nearest whole so they may not sum to published totals.

### Higher Education graduate activities

About 15 months after course completion, among North East 2018/19 graduates:

**67%** were in employment or unpaid work alone (England 69%)

**11%** combined employment with further study (England 11%)

**9%** were in further study alone (England 8%)

**7%** were unemployed (England 7%)

Source: HESA, Graduate Outcomes Statistics: UK, 2018/19 (published Jul 2021) Geography: North East HE providers (LEP calculation)

Note: Includes former full-time and part-time students and those who have undertaken significant interim study.