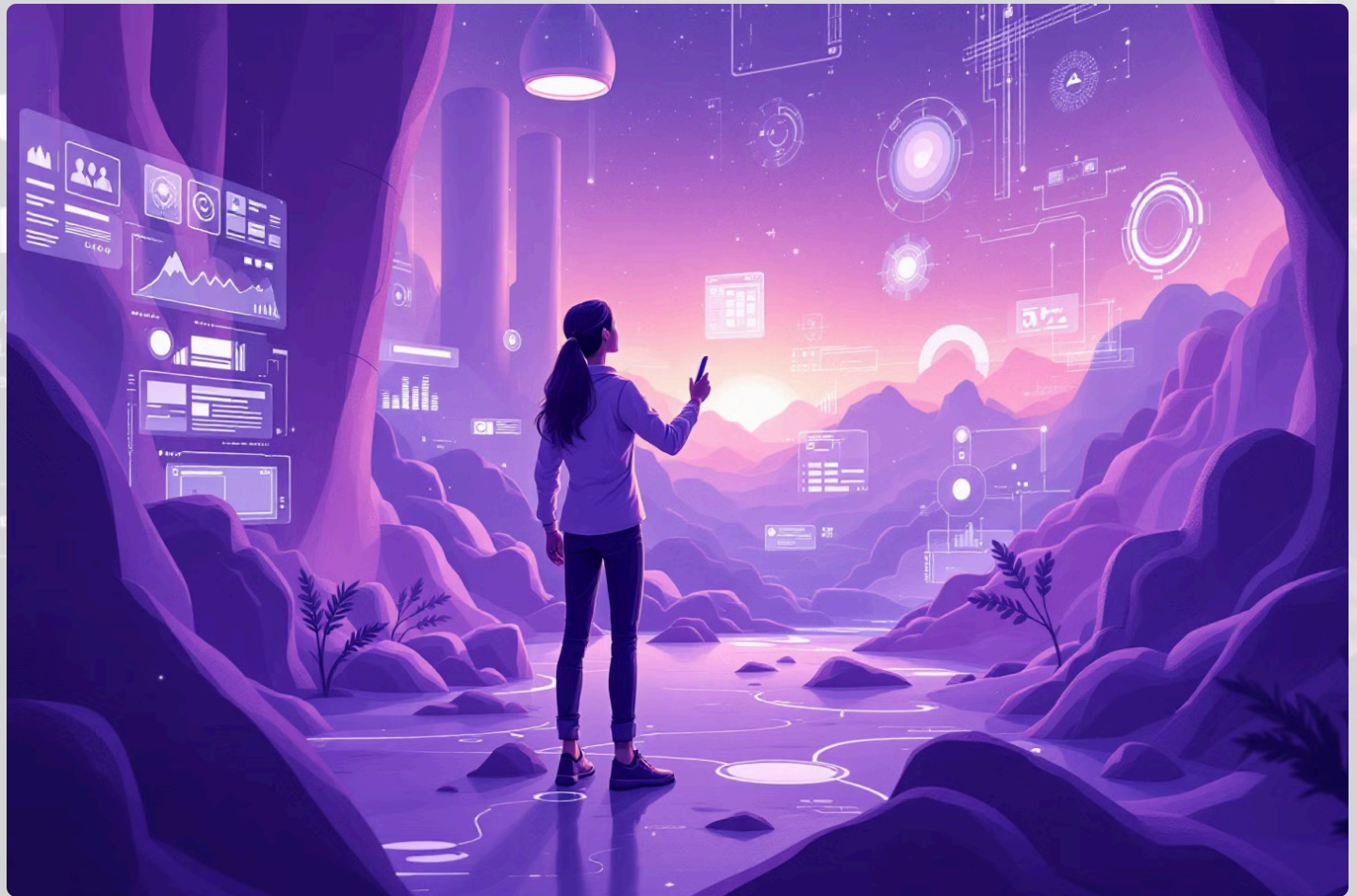


# NightCafe Studio Training Manual (2025 Edition)



Welcome to the comprehensive guide for NightCafe Studio, the leading platform for AI-generated artwork creation. This manual provides everything new users need to know about creating stunning digital art using text prompts, understanding different AI models, and engaging with the NightCafe community. Whether you're a curious beginner or a creative enthusiast looking to expand your artistic toolkit, this guide will walk you through all aspects of the platform from basic creation to advanced techniques.

by  **Ty Davis-Turcotte**

## Table of contents

- [What Is NightCafe Studio?](#)
- [Why Use NightCafe?](#)
- [Prerequisites](#)
- [Accessing NightCafe](#)
- [User Interface Overview](#)
- [Understanding Creation Methods](#)
- [How to Create Your First AI Artwork](#)
- [Earning and Using Credits](#)
- [Community Features and Galleries](#)
- [Settings and Account Options](#)
- [Best Practices](#)
- [Troubleshooting & FAQs](#)
- [Advanced Techniques](#)
- [Conclusion and Next Steps](#)

# What Is NightCafe Studio?

NightCafe Studio is a powerful web-based AI art generator that transforms text descriptions into unique digital artwork. Unlike traditional digital art tools that require manual drawing skills, NightCafe uses sophisticated AI algorithms to interpret your text prompts and generate corresponding visuals, making art creation accessible to everyone regardless of artistic background.

At its core, NightCafe leverages several cutting-edge text-to-image AI models including Stable Diffusion, DALL·E 2, and CLIP-Guided Diffusion. Each of these models has distinct characteristics and strengths that produce different artistic results. The platform is entirely browser-based, eliminating the need for downloads, installations, or high-end hardware—all processing happens on NightCafe's cloud servers.

The platform operates on a credit system that balances accessibility with sustainability. Free users receive daily credits to create artwork, while more frequent users can earn additional credits through community participation or opt for paid plans to increase their creation capacity. All artwork you generate belongs to you and can be downloaded in various formats for personal or commercial use.

NightCafe Studio also incorporates social features, allowing users to share creations, participate in contests, and learn from a vibrant community of AI artists. This combination of powerful AI technology, user-friendly interface, and community engagement makes NightCafe Studio a comprehensive platform for digital art exploration and creation.

# Why Use NightCafe?

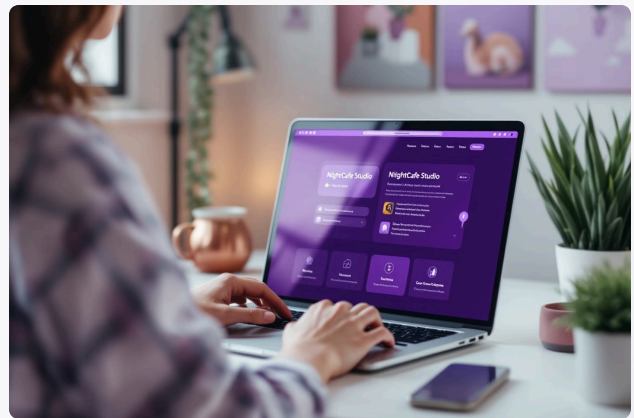
NightCafe Studio stands out among AI art platforms for its balance of accessibility, quality, and community features. Whether you're a professional artist looking to expand your toolkit or someone with no artistic background wanting to express yourself visually, NightCafe offers several compelling advantages:

## Accessibility & Ease of Use

The platform is designed with beginners in mind. The intuitive interface guides you through the creation process with clear options and helpful tooltips. You don't need to understand the complex AI technology working behind the scenes—simply enter a text prompt, select a few options, and watch as your idea transforms into artwork.

## Artistic Versatility

NightCafe supports multiple AI models and artistic styles, allowing for tremendous creative flexibility. You can generate photorealistic images, surreal dreamscapes, cartoon illustrations, oil paintings, watercolors, and countless other visual styles. This versatility means you're not locked into a single aesthetic, and you can experiment widely.



## Community & Learning

Unlike some creation tools that exist in isolation, NightCafe fosters a supportive community of creators. You can browse public galleries for inspiration, participate in themed contests, and receive feedback on your work. This social dimension accelerates learning and provides motivation to continue exploring and improving.

## Ownership & Usage Rights

All artwork you create on NightCafe belongs to you. You can download high-resolution versions, print physical copies, use them in other projects, or even sell them. This creator-friendly approach makes NightCafe suitable for both personal creative expression and professional applications.

## Regular Updates

The platform continuously evolves with new AI models, features, and improvements regularly added. This ensures that NightCafe remains at the cutting edge of AI art technology, giving users access to the latest advancements without requiring technical expertise.

# Prerequisites

Before diving into NightCafe Studio, there are a few basic requirements you'll need to meet to ensure a smooth experience. Fortunately, the platform is designed to be accessible with minimal technical requirements.

## Technical Requirements

- A reliable internet connection (at least 5 Mbps recommended for optimal performance)
- An updated web browser - Google Chrome, Mozilla Firefox, Microsoft Edge, or Safari (latest versions strongly recommended)
- A device with a screen large enough to comfortably view and edit images (desktop, laptop, or tablet recommended over smartphones)
- Basic understanding of web navigation and account creation

## Account Requirements

While you can experiment with NightCafe without an account, creating one is essential for saving your artwork and accumulating credits. To create an account, you'll need either:

- A valid email address for traditional signup
- An active Google account for Google login integration
- A Facebook account for Facebook login integration

## Knowledge Prerequisites

NightCafe is designed to be user-friendly, requiring minimal prior knowledge. However, the following will enhance your experience:

- Basic English language skills for crafting effective prompts
- General familiarity with digital image concepts (resolution, aspect ratio, file formats)
- Creative imagination for developing interesting and detailed prompts

Even without extensive technical or artistic background, you can still achieve impressive results with NightCafe. The platform is built to be intuitive, with helpful guidance throughout the creation process.



# Accessing NightCafe

Accessing NightCafe Studio is straightforward since it's entirely web-based, requiring no downloads or installations. This accessibility is one of its key advantages, allowing you to create AI art from virtually any device with an internet connection and a modern web browser.

## Platform Access

To access NightCafe Studio, simply open your preferred web browser and navigate to **<https://creator.nightcafe.studio>**. The platform will load automatically, presenting you with the home page featuring trending artwork and creation options. This direct web access means you can use NightCafe from Windows, Mac, Linux, or even mobile devices without compatibility concerns.

## Account Creation

While you can browse public galleries without signing in, creating an account provides numerous benefits including saving your artwork, earning credits, and participating in the community. To create an account:

1. Click the "Sign Up" or "Login" button in the top-right corner of the homepage
2. Choose your preferred sign-up method: Email, Google, or Facebook
3. If using email, enter your email address and create a password
4. Complete any verification steps (such as confirming your email)
5. Set up your profile with a username and optional profile picture

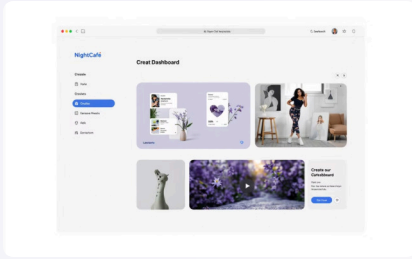
## Free vs. Paid Access

NightCafe operates on a freemium model, meaning you can use basic features without payment:

- Free users receive a daily allocation of credits for creating artwork
- All users have access to public galleries and community features
- Paid plans provide additional credits and sometimes access to premium features
- One-time credit purchases are available for occasional users who need extra creation capacity

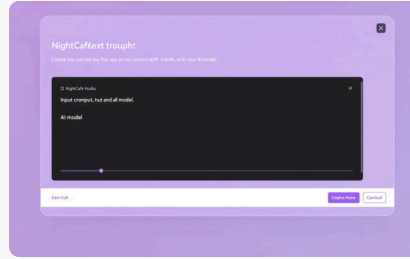
Once you've created your account, you'll immediately have access to your daily credits and can begin creating artwork. The platform remembers your login information, making future visits seamless and allowing you to pick up right where you left off with your creative projects.

# User Interface Overview



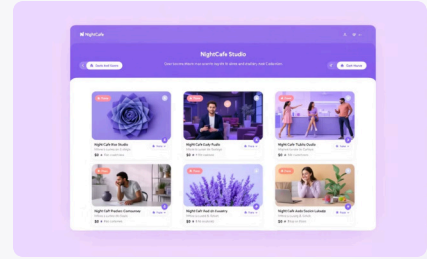
## Main Dashboard

The central hub of NightCafe Studio displays your recent creations, trending community artwork, and quick access to creation tools. Navigation tabs at the top provide access to all major sections of the platform.



## Creation Interface

The artwork generation screen features a prominent text prompt field, model selection options, style choices, and advanced settings. The clean layout guides you through the creation process step by step.



## Gallery View

When browsing your creations or community artwork, images appear in a responsive grid layout with options to like, comment, remix, or view details of each piece. Filtering options help you sort and find specific types of artwork.

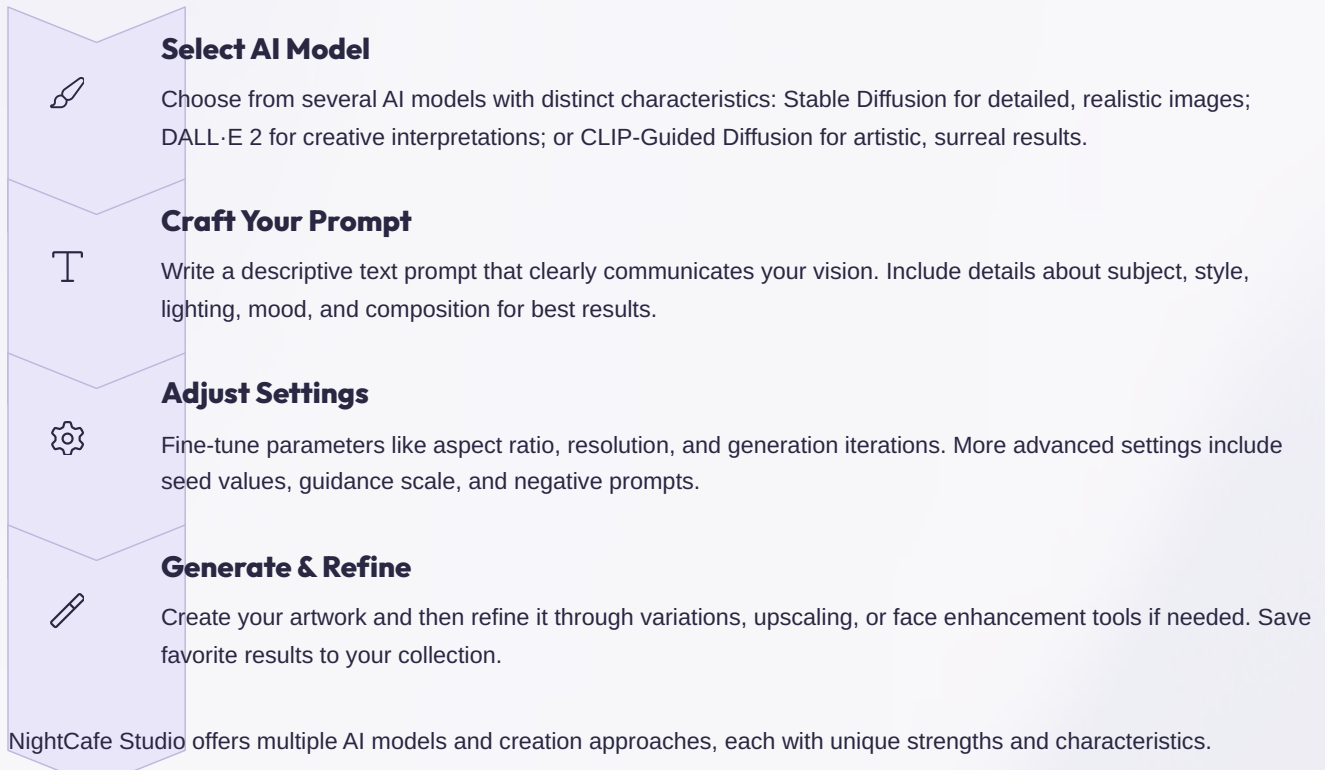
NightCafe Studio features a thoughtfully designed user interface that balances simplicity with powerful functionality. The layout is intuitive enough for beginners while offering depth for experienced users. The interface adapts responsively to different screen sizes, though the experience is optimized for larger screens like desktops and tablets.

## Main Navigation Elements

- **Create Button:** The primary action button that starts the creation process
- **Explore Tab:** Browse community creations, trending artwork, and contests
- **My Creations Tab:** Access all your saved artwork, organized by date or collections
- **Credit Display:** Shows your current credit balance and history
- **Profile/Settings:** Access to account settings, preferences, and profile management
- **Search Function:** Find specific artwork or creators across the platform

The color scheme uses a clean, professional palette that emphasizes the artwork rather than competing with it. Contextual help is available throughout the interface through tooltips and information icons, making it easy to understand each feature as you use it. Overall, the interface strikes an excellent balance between aesthetics and functionality, prioritizing a smooth user experience for creators of all skill levels.

# Understanding Creation Methods



## Core AI Models

The platform currently supports several leading AI image generation models:

- **Stable Diffusion:** A versatile and popular model known for creating detailed, coherent images quickly. It excels at photorealistic imagery, landscapes, and portraits. This model offers a good balance of speed and quality, making it the recommended starting point for beginners.
- **DALL·E 2:** Developed by OpenAI, this model is particularly strong at understanding complex prompts and generating creative interpretations. It often produces cleaner, more coherent results for specific requests but uses more credits per generation.
- **CLIP-Guided Diffusion:** A more artistic and experimental model that produces unique, sometimes surreal results. It takes longer to generate images but can create distinctive artistic styles that other models might not capture.

## Artistic Style Selection

Beyond the base AI models, NightCafe offers predefined artistic styles that influence the aesthetic direction of your creation:

- Digital art, oil painting, watercolor, pencil sketch, comic book, cyberpunk, steampunk, fantasy, sci-fi, etc.
- These style presets effectively add style-specific language to your prompt automatically
- You can combine manual style descriptions in your prompt with these presets for more control

Each combination of AI model and artistic style creates different results, even with the same text prompt. Experimenting with these combinations is key to finding your preferred creation method and developing your unique AI art style.



# How to Create Your First AI Artwork

Creating your first piece of AI artwork with NightCafe Studio is an exciting process that combines your creativity with powerful AI technology. Follow these detailed steps to generate your first masterpiece:

## Step 1: Begin the Creation Process

From the NightCafe homepage, click the prominent "Create" button in the navigation bar. This will take you to the creation interface where all the magic happens. You'll be presented with several creation method options—for your first creation, select "Stable Diffusion" which offers an excellent balance of quality and speed.

## Step 2: Craft Your Text Prompt

The text prompt is the most important element of AI art creation. In the text field provided, describe the image you want to generate in clear, descriptive language. For example, instead of simply writing "sunset," try "a vibrant sunset over a calm ocean with silhouettes of palm trees, warm orange and purple colors, photorealistic style." The more detailed and specific your prompt, the better the AI can understand your vision.

## Step 3: Select Additional Options

1. **Style:** Choose from the dropdown menu if you want to apply a specific artistic style like "oil painting" or "watercolor"
2. **Aspect Ratio:** Select the shape of your image (1:1 for square, 16:9 for widescreen, etc.)
3. **Resolution:** Higher resolutions produce more detailed images but use more credits
4. **Advanced Settings (Optional):** For your first creation, the default settings are recommended

## Step 4: Generate Your Artwork

Click the "Create" button to start the generation process. NightCafe will show a progress indicator as the AI works on your image. This typically takes between 15-60 seconds depending on the complexity and settings. For first-time users, NightCafe often shows preliminary results as the image develops.

## Step 5: Review and Save Your Creation

Once generation is complete, your new artwork will appear on screen. If you're happy with the result, it's automatically saved to your "My Creations" gallery. If you want to make adjustments, you can:

- Generate variations of the same image
- Modify your original prompt and create again
- Apply enhancement tools like upscaling or face refinement

## Step 6: Share or Download Your Artwork

Your new creation can be downloaded in various resolutions, shared directly to social media, or kept private in your gallery. You can also add a title and description to help organize your growing collection of AI art.

Congratulations! You've just created your first AI artwork with NightCafe Studio. Remember that AI art generation involves some randomness, so each creation is unique—even with the same prompt. This makes experimentation a fun and integral part of the creative process.

# Earning and Using Credits

NightCafe Studio operates on a credit system that balances accessibility with sustainability. Credits are the currency used to generate artwork, with different creation methods and settings requiring varying amounts of credits.

Understanding how to earn and efficiently use these credits is essential for maximizing your creative output on the platform.

## How Credits Work

Credits function as the fuel for your creative process on NightCafe. Each time you generate artwork, a certain number of credits are deducted from your account based on several factors:

- **AI Model:** Different models cost different amounts (Stable Diffusion typically uses 1 credit, while DALL·E 2 and other advanced models may use 2-5 credits per generation)
- **Resolution:** Higher resolution outputs require more computational resources and therefore more credits
- **Generation Settings:** Extended runtime, multiple iterations, or special enhancements like upscaling can increase the credit cost

Your current credit balance is always displayed in the top navigation bar, making it easy to track your available resources. When you're about to create an artwork, the interface clearly shows how many credits the operation will require before you confirm.

## Credit Management Tips



### Use Low-Cost Options for Experimentation

When trying new concepts or refining prompts, use the most credit-efficient options (like Stable Diffusion at standard resolution) to test your ideas before committing more credits to higher-quality versions.



### Claim Daily Credits Consistently

Daily login credits expire if not claimed, so develop a habit of checking in daily even if you're not creating artwork that day. These daily credits add up significantly over time.



### Share Quality Work Publicly

Public creations that receive engagement from the community can earn you additional credits. Focus on creating and sharing high-quality, interesting artwork to maximize this benefit.

## Ways to Earn Free Credits

NightCafe provides several ways to earn credits without purchasing them:

- **Daily Login Bonus:** Simply logging in each day awards you with free credits (typically 5 credits)
- **Community Participation:** Receiving likes and comments on your public creations can earn you additional credits
- **Contest Participation:** Entering and winning NightCafe's regular art contests can award substantial credit prizes
- **Referral Program:** Inviting friends to join NightCafe earns you bonus credits when they sign up
- **Completing Challenges:** Periodic challenges and special events offer credit rewards

## Purchasing Credits

For users who need more creation capacity, NightCafe offers several options:

- **One-time Purchases:** Buy credit packs ranging from small amounts to bulk packages with volume discounts
- **Subscription Plans:** Monthly subscriptions provide a regular allotment of credits at a discounted rate compared to one-time purchases
- **Special Promotions:** NightCafe occasionally offers discounted credit sales or bonus credits with purchases

# Community Features and Galleries

NightCafe Studio isn't just a creation tool—it's a thriving community of AI artists sharing inspiration, techniques, and feedback. The social aspects of the platform enhance the creative experience by providing motivation, learning opportunities, and a sense of belonging. Understanding how to navigate and engage with these community features will significantly enrich your NightCafe experience.

## Exploring Community Artwork

The "Explore" tab is your window into the broader NightCafe community. Here you can discover artwork created by users from around the world, organized in several ways:

- **Trending:** Currently popular creations receiving significant engagement
- **Latest:** The most recent public creations from all users
- **Top:** All-time most popular artwork based on community reactions
- **Following:** Creations from users you've chosen to follow
- **Categories:** Artwork filtered by themes like landscapes, portraits, abstract, etc.

## Interaction and Engagement

When viewing community artwork, you can interact in several meaningful ways:

- **Likes:** Show appreciation for artwork that resonates with you
- **Comments:** Provide feedback, ask questions, or compliment specific aspects
- **Remix:** Create your own version of another user's artwork (with proper attribution)
- **Share:** Post directly to social media or copy a link to share elsewhere
- **Follow:** Subscribe to a creator whose work you enjoy to see their future creations

## Contests and Challenges

NightCafe regularly hosts themed contests and challenges that provide structure and inspiration for your creative efforts:

- Weekly contests with specific themes or techniques to explore
- Community voting determines winners in most contests
- Prizes typically include credit packages and featured placement in galleries
- Participating, even without winning, is an excellent way to push your creative boundaries

## Managing Your Personal Gallery

The "My Creations" section functions as your personal gallery and creative portfolio:

- All your artwork is automatically saved here, organized by date
- Create collections to organize artwork by theme, style, or project
- Toggle privacy settings to control which creations are public vs. private
- Edit titles and descriptions to provide context for your work
- Track community engagement with your public creations

Engaging actively with the community not only enhances your enjoyment of the platform but can also accelerate your learning as you observe techniques and prompts from other creators. The supportive nature of the NightCafe community makes it welcoming for beginners while still providing value for experienced AI artists.

# Settings and Account Options

Managing your NightCafe Studio account effectively ensures a personalized experience that matches your preferences and creative goals. The platform offers a range of settings and account options accessible through the profile icon in the upper-right corner of the interface. This section explores the key settings available and how to configure them to your advantage.

## Profile Settings

Your public profile represents you within the NightCafe community. You can customize several elements:

- **Display Name:** The name shown alongside your creations (can be different from your login username)
- **Profile Picture:** Upload a photo or use one of your AI creations as your avatar
- **Bio:** A short description about yourself, your artistic interests, or your approach to AI art
- **Website/Social Links:** Optional links to your personal website or social media profiles

## Account Management

These settings control fundamental aspects of your account:

- **Email Address:** Update your registered email for notifications and recovery
- **Password:** Change your password and configure two-factor authentication
- **Connected Accounts:** Manage connections to Google, Facebook, or other login methods
- **Subscription Management:** View, change, or cancel any active paid subscriptions
- **Credit History:** Review detailed records of how you've earned and spent credits

Taking time to configure these settings properly can significantly enhance your NightCafe experience. Most settings can be changed at any time, allowing you to adjust as your needs evolve or as you become more familiar with the platform. If you encounter difficulties finding or adjusting specific settings, the Help section provides guidance on navigating account options.

## Privacy Controls

NightCafe gives you control over your data and visibility:

- **Default Creation Privacy:** Set whether new creations are automatically public or private
- **Content Filtering:** Adjust the NSFW (Not Safe For Work) content filter strength
- **Data Usage:** Control how your creations may be used for platform improvement
- **Account Visibility:** Choose whether your profile is discoverable by other users
- **Download Your Data:** Request an export of all your account data and creations

## Notification Preferences

Customize how and when NightCafe communicates with you:

- **Email Notifications:** Control which activities trigger email alerts
- **Platform Notifications:** Manage in-app notification preferences
- **Marketing Communications:** Opt in or out of promotional messages
- **Contest Announcements:** Choose whether to receive updates about new contests

## Display and Interface Settings

Personalize your visual experience on the platform:

- **Theme:** Switch between light and dark mode (if available)
- **Gallery View:** Adjust how many creations appear per row in galleries
- **Default Creation Settings:** Set your preferred AI model, resolution, and other parameters

# Best Practices

## Prompt Engineering Fundamentals

The quality of your text prompt directly impacts your results. Include specific details about subject, composition, lighting, mood, and artistic style. Instead of "mountain landscape," try "majestic snow-capped mountains at sunrise with dramatic clouds and alpine forest, cinematic lighting, hyper-detailed photography." Use commas to separate concepts and add weight to important elements by placing them earlier in the prompt.

## Model Selection Strategy

Different AI models excel at different types of imagery. Use Stable Diffusion for photorealistic scenes, detailed environments, and general-purpose creation. Try DALL·E 2 when you need precise object placement, coherent text rendering, or accurate human figures. CLIP-Guided Diffusion often produces the most artistic and unique results for abstract concepts or surreal imagery. Experiment with multiple models for the same prompt to see different interpretations.

## Iterative Refinement

Treat AI art creation as a conversation rather than a one-shot process. Start with a basic version of your concept, then refine based on the results. Save variations you like, identify specific elements to improve, and adjust your prompt accordingly. Sometimes small tweaks in wording can dramatically change the output. Keep a record of successful prompts to build your personal library of effective techniques.

## Technical Optimization Tips



### Choose Appropriate Aspect Ratios

Different subjects work better with different aspect ratios. Landscapes typically benefit from wider formats (16:9, 3:2), while portraits or character designs often work better in taller ratios (2:3, 4:5). Consider your intended use case—social media platforms often have specific optimal dimensions.



### Balance Quality and Credit Usage

Higher resolutions and more iterations produce better results but consume more credits. Use lower settings for experimentation, then invest more credits in finalizing promising concepts. The default settings provide a good balance for most creations.



### Document Your Process

Maintain a record of your successful prompts, settings, and techniques. NightCafe saves your creation history, but keeping your own notes about what worked particularly well helps build your personal expertise over time.



### Learn From The Community

Study the work and prompts of successful creators. Many users share their exact prompts, allowing you to understand the language patterns that produce impressive results. Don't just copy—analyze why certain approaches work.

## Creative Approaches to Try

Expand your AI art skillset by experimenting with these creative techniques:

- **Style Fusion:** Combine multiple artistic styles in one prompt (e.g., "cyberpunk meets art nouveau")
- **Temporal Prompts:** Create series of images showing progression through time or seasons
- **Negative Prompting:** Use the "negative prompt" feature to specifically exclude unwanted elements
- **Seed Manipulation:** Save the seed number from successful generations to maintain consistency across related images
- **Cross-Model Refinement:** Generate initial concepts with one model, then refine with another to leverage the strengths of each

Remember that AI art generation involves a degree of unpredictability, which is part of its creative charm. Embrace the unexpected results alongside your planned creations—some of your most interesting work may come from happy accidents and experimental exploration.



# Troubleshooting & FAQs

Even with NightCafe's user-friendly design, you may occasionally encounter challenges or have questions about specific features. This section addresses common issues and provides practical solutions to ensure your creative process remains smooth and enjoyable.

## Common Technical Issues



### Image Generation Failures

If your image fails to generate completely, try these solutions: Refresh your browser and attempt again; simplify your prompt to remove potentially problematic terms; check your internet connection stability; or try a different AI model which may handle your specific prompt better.



### Interface Loading Problems

If the NightCafe interface loads incompletely or behaves erratically: Clear your browser cache and cookies; disable browser extensions that might interfere; try an alternative supported browser; or verify you're using the latest browser version.



### Mobile Device Limitations

If experiencing difficulties on a smartphone or tablet: Use landscape orientation for better interface layout; switch to desktop mode in your mobile browser if available; be aware that some advanced features may be limited on smaller screens.

## Frequently Asked Questions

Why was my credit card charged when I signed up for a free account?

NightCafe offers free accounts with no credit card required. If you selected a subscription during signup, a payment method would be necessary. Check your account settings under "Subscriptions" to verify what plan you're enrolled in. You can cancel any subscription from this section.

Why do my images sometimes look different from my prompt description?

AI models interpret prompts based on their training, which may not always align perfectly with your vision. The AI balances your specific requests with its understanding of visual coherence and artistic principles. Improve results by using more detailed prompts, studying successful examples from other users, and experimenting with different AI models.

Can I use NightCafe creations commercially?

Yes, NightCafe grants you the rights to use your creations commercially. However, be aware of potential limitations regarding recognizable people, trademarked elements, or copyright considerations that might appear in AI-generated content. For important commercial projects, consult with a legal professional about your specific use case.

How can I get my credits refunded if I'm unhappy with a creation?

NightCafe typically doesn't refund credits for individual creations due to the nature of AI generation involving some randomness. However, if you experience persistent technical issues preventing successful generations, contact customer support through the help center with specific examples of the problem.

## Getting Additional Help

If your issue isn't addressed here, NightCafe offers several support channels:

- The Help Center accessible via the question mark icon in the interface
- Email support for account-specific issues
- The NightCafe Discord community for peer assistance and advice
- FAQ sections updated regularly with new information

Remember to check if your issue has been reported by others in community forums before contacting support directly, as common problems often have community-discovered workarounds.

# Advanced Techniques

Once you've mastered the basics of NightCafe Studio, you can explore advanced techniques that will elevate your creations to new levels of quality and uniqueness. These approaches require more practice and experimentation but offer significant rewards in terms of creative control and distinctive results.

## Negative Prompting

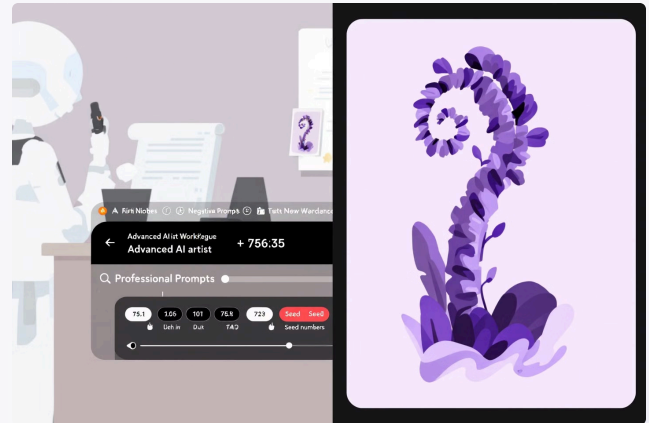
Negative prompts tell the AI what *not* to include in your image. This powerful technique helps eliminate common AI artifacts and unwanted elements:

- Use the dedicated negative prompt field available in most creation methods
- Common negative terms include: "blurry, distorted, low quality, bad anatomy, extra limbs, duplicate, malformed hands, poorly drawn face"
- Customize negative prompts based on recurring issues you notice in your specific style of creations
- Balance negative prompts carefully—too many restrictions can constrain the AI's creativity

## Seed Management

Every AI generation uses a random "seed" number that influences the outcome. By manipulating seeds, you can gain more consistent control:

- Save the seed number from particularly successful generations
- Reuse the same seed with similar prompts to maintain consistency across a series
- Make small prompt adjustments while keeping the seed constant to create controlled variations
- Create "before and after" scenes by maintaining the same seed while changing time-based elements in the prompt



## Multi-Step Generation Workflows

Complex, high-quality creations often involve multiple generation steps:

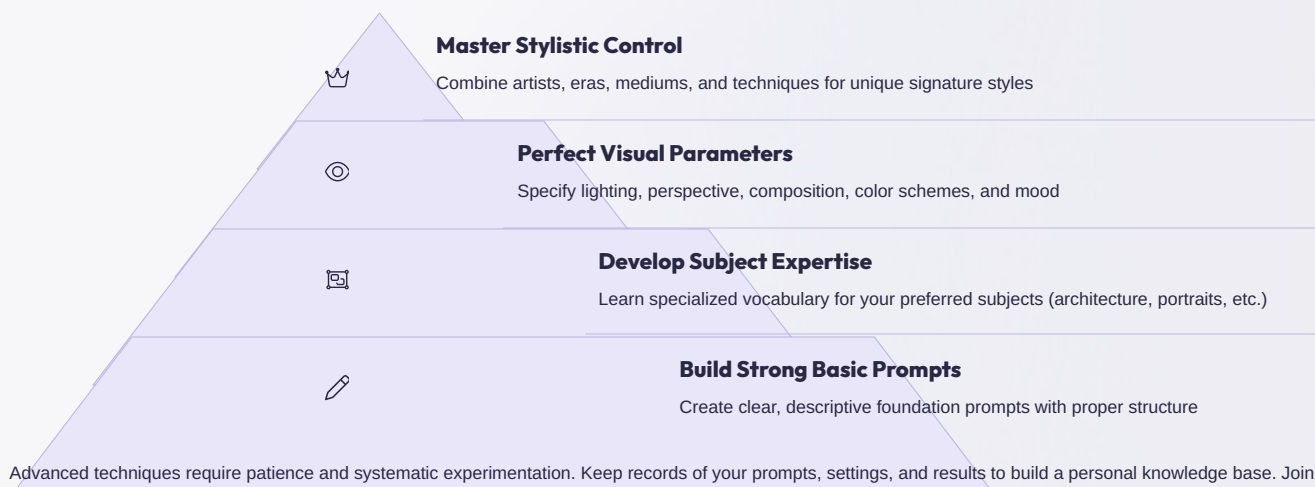
1. Generate a base image with core composition and elements
2. Use the "Evolve" feature to refine specific aspects while maintaining the overall structure
3. Apply face enhancement tools for realistic human features
4. Upscale the final version for maximum detail and quality
5. Consider combining or compositing multiple generations for complex scenes

## Model-Specific Optimization

Each AI model has unique strengths and parameters worth mastering:

- **Stable Diffusion:** Experiment with the Guidance Scale parameter to balance prompt adherence versus creativity
- **DALL·E 2:** Use precise object positioning language and leverage its strength with text rendering
- **CLIP-Guided Diffusion:** Allow longer generation times and use more abstract, evocative language

## Prompt Engineering Techniques



Advanced techniques require patience and systematic experimentation. Keep records of your prompts, settings, and results to build a personal knowledge base. Join discussions in the NightCafe community where experienced users often share sophisticated techniques and workflows that can accelerate your learning process. With practice, these advanced approaches will become second nature, allowing you to realize increasingly complex and refined artistic visions.

# Conclusion and Next Steps

Congratulations on completing the NightCafe Studio Training Manual! You now have a comprehensive understanding of this powerful AI art platform and the skills needed to create stunning digital artwork. As you continue your journey with NightCafe, remember that AI art creation is a blend of technical knowledge and creative exploration—both aspects improve with practice and experimentation.

## Key Takeaways

- NightCafe Studio provides accessible AI art creation through multiple models and styles, with both free and premium options
- Effective prompt engineering is the foundation of successful AI art creation
- The platform balances user-friendly simplicity with powerful advanced features for users of all skill levels
- Community features enhance the creative experience through inspiration, feedback, and collaborative learning
- Regular practice and systematic experimentation lead to continuous improvement in your AI art skills

## Where to Go From Here

To continue developing your NightCafe skills and make the most of the platform, consider these next steps:

### 1 Create Daily

Use your daily credits consistently to build momentum in your learning. Even a few minutes of creation each day will rapidly build your skills and intuition for what works well.

### 2 Join the Community

Actively participate in the NightCafe Discord server, follow other creators, and engage with comments and feedback. The community is a tremendous resource for learning and motivation.

### 3 Enter Contests

Participate in weekly contests to challenge yourself with new themes and techniques. Contest participation accelerates growth by pushing you beyond your comfort zone.

### 4 Build a Portfolio

Curate your best work into themed collections that showcase your style and interests. A well-organized portfolio helps you track your progress and can be shared beyond the NightCafe platform.

## Beyond NightCafe

As your skills develop, consider expanding your AI art toolkit:

- Use your NightCafe creations as starting points for further editing in traditional design software
- Explore printing your favorite works as physical art for your home or as gifts
- Consider how AI art can complement other creative projects like book covers, game assets, or marketing materials
- Stay informed about the rapidly evolving field of AI art through blogs, podcasts, and online courses

Remember that AI art is still an emerging field with continuous developments in technology, techniques, and applications. The skills you develop today will evolve alongside these advancements, opening new creative possibilities. NightCafe Studio provides an excellent foundation that will serve you well as you explore the expanding universe of AI-assisted creativity.

Now it's time to put this knowledge into practice. Log in to NightCafe Studio, enter your first (or next) prompt, and begin your adventure in AI art creation. Happy creating!