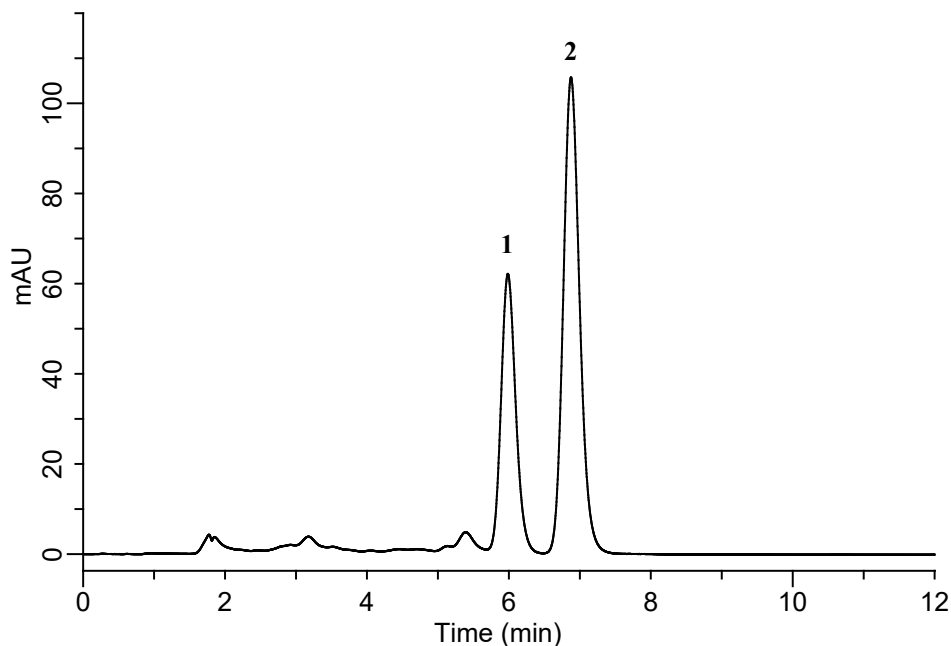


# InertSearch™ for LC

Inertsil® Applications

## Analysis of Carotene

Data No. LB750-7111



### Conditions

**System** : Chromaster HPLC system (HITACHI)  
**Column** : InertSustain C30 (GL Sciences Inc.)  
(5  $\mu$  m, 150 x 4.6 mm I.D.)  
**Column Cat. No.** : 5020-17144  
**Eluent** : C<sub>2</sub>H<sub>5</sub>OH  
**Flow Rate** : 1.0 mL/min  
**Col. Temp.** : 40 °C  
**Detection** : UV 280 nm  
**Injection Vol.** : 5  $\mu$  L  
**Sample** : Standard in Chloroform

### Analyte:

1.  $\alpha$ -Carotene 100 mg/L  
2.  $\beta$ -Carotene 250 mg/L