

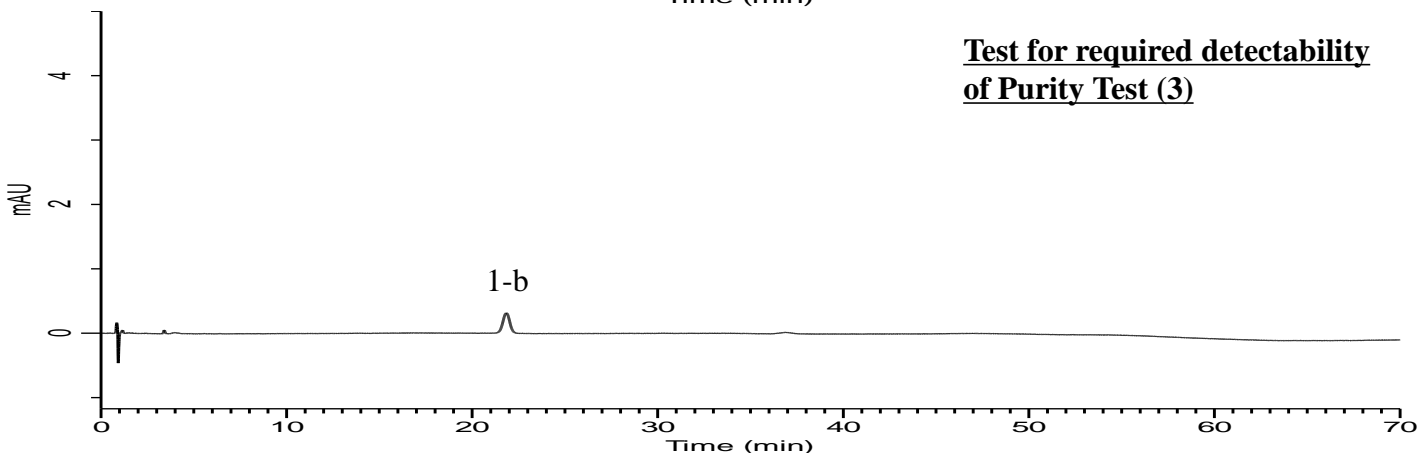
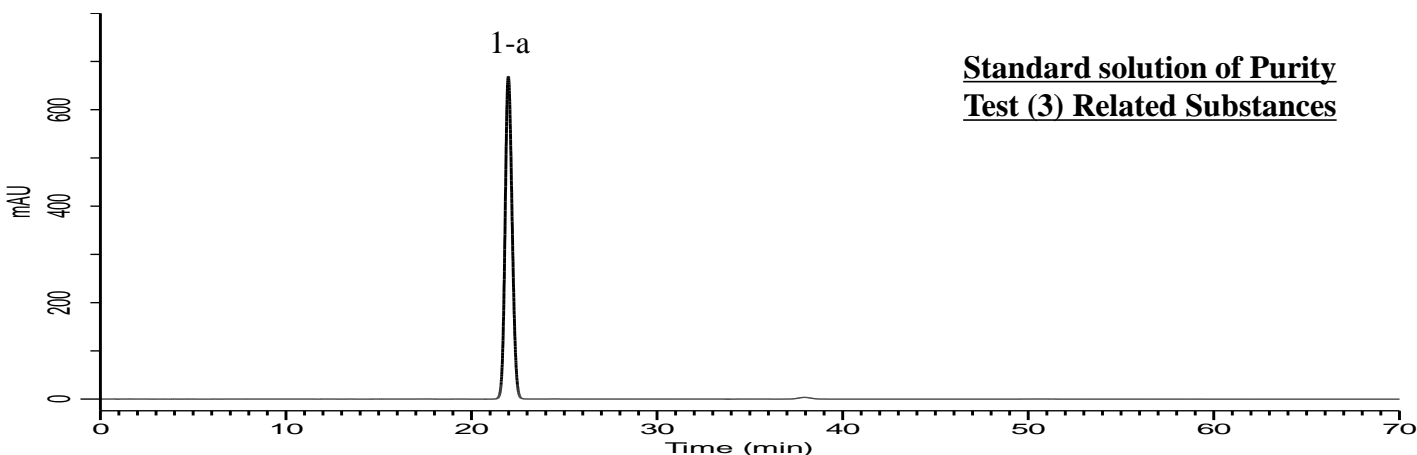
InertSearch for LC

Inertsil Applications

Analysis of Rosuvastatin Calcium

(Under the Condition of the draft for the Japanese Pharmacopoeia,
Rosuvastatin Calcium)

Data No. LB640-0812



Conditions

System : GL7700 HPLC system
Column : Inertsustain C18 (3 μ m HP, 150 x 3.0 mm I.D.)
Column Cat. No. : 5020-14425
Eluent : A) H₂O/CH₃CN/1 % TFA = 70/29/1
B) H₂O/CH₃CN/1 % TFA = 24/75/1

Time(min)	A (vol%)	B (vol%)
0	100	0
30	100	0
50	60	40
60	0	100
70	0	100

Analyte:

1. Rosuvastatin Calcium
700 mg/L (1-a) or 0.35 mg/L (1-b)

RSD of the peak area of 1-a (%) (n=5) : 0.02 (\leq 2.0)

The peak area ratio of 1-b to 1-a (%)
: (0.025 \leq) 0.044 (\leq 0.075)

Flow rate : 0.75 mL/min
Col. Temp. : 40 °C
Detection : UV 242 nm (UV7750 UV Detector)
Injection Vol. : 10 μ L
Sample : Standard