

幼教引領未來
PIONEERING OUR FUTURE

2025-26



YEW CHUNG COLLEGE
OF EARLY CHILDHOOD
EDUCATION

耀中幼教學院

Welcome 歡迎



Dr Betty Po-king Chan
陳保琮博士

Chairperson, Board of Governors
校董會主席

As a specialist in Early Childhood Education - the only one of its kind in Asia - the College continues to positively impact ECE development not just in Hong Kong but in the Greater Bay Area and across the Mainland. Our teachers hold aloft our beacon, and their progressive methods have created a positive ripple effect that has been recognised and applauded by the community, our partners, and government.

耀中幼教學院作為亞洲首間專注於幼兒教育的高等院校，在香港、大灣區，甚至是內地全國，持續對幼教的發展正面產生正面影響。而我們的老師作為學院的明燈，他們的漸進式教學不但帶來了正面的影響，更獲得社區、合作伙伴，以及政府的肯定及讚揚。

Yew Chung College of Early Childhood Education is dedicated to providing world-class training for early childhood educators.

Being relatively small, we provide a level of personal tuition and attention that larger colleges and universities cannot. Our commitment to children's development is at the heart of our mission. We set our teacher education programmes apart by centring them on the Yew Chung Approach to Early Childhood Education. This approach resonates with Hong Kong's rich cultural tapestry, blending Confucian humanitarian principles with an emphasis on inquiry-driven, egalitarian relationships in the classroom.

I invite you to join us on our journey to realise our vision of "a better world achieved through developing individual human potential, knowledge of the world, global competence and ethical values to the fullest".

耀中幼教學院致力於提供世界一流的幼兒教育師資培訓。正因為我們的規模相對小，我們能為學生提供一定程度的私人輔導和關注，這是大型學院和大學無法媲美的。我們對幼兒發展的承諾是我們使命的核心。我們以《耀中幼教教學法》為中心，使我們的教師培訓課程與眾不同。這套教學法與香港豐富的文化氛圍產生共鳴，將儒家人道主義原則與強調以探索驅動的課堂平等關係融為一體。

我邀請您加入我們的旅程，努力實現我們的願景—「通過充分開發個人的潛力、世界知識、全球能力和道德價值觀，實現一個更美好的世界」。



Professor Kerry Lee
李敬廉教授

President and Chair Professor of Child Development
校長暨兒童發展講座教授

Contents 目錄



Why YCCECE 耀中幼教學院	04	Practicum 實習安排	25
Student Testimonials 學生分享	06	Field Experience & Overseas Exposure 幼教體驗及海外學習活動	26
Admission Requirements 入學要求	07	Unique Experiential Learning 獨特體驗式學習	28
Study Pathway in YCCECE 幼教專才之路	08	Partnership and Collaborations 合作伙伴	29
Bachelor of Education (Honours) in Early Childhood Education 幼兒教育榮譽學士	10	Yew Chung Yew Wah Teachers of Tomorrow Scheme 耀中耀華明師計劃	30
Higher Diploma in Early Childhood Education 幼兒教育高級文憑	13	Research and Community Support 研究項目及社區支援	32
Diploma in Early Childhood Education and Care 幼兒教育與照顧文憑	15	Mengxue 蒙學	34
Certification Course for Kindergarten Principals 幼稚園校長證書課程	16	Student Support Services 學生支援服務	36
Professional Diploma in Special Child Care 特殊幼兒工作專業文憑	17	Yew Chung Approach to Early Childhood Education 耀中幼教教學法	37
Certificate in Child Rights and Safeguarding 兒童權利及保護證書	18	Scholarships and Awards for Admission & Career Pathwa 入學獎學金、獎項及就業晉升階梯	38
Certificate in Child Caregiving 嬰幼兒照顧證書課程	19	How to Apply 入學申請	39
Our People 我們的團隊	20		

WHY YCCECE 認識耀中幼教學院



One-Stop Solution for Early Childhood Education
幼教領域服務全覆蓋

1st 

and only tertiary institution specialising in ECE in Asia
亞洲首間及唯一專注幼兒教育的高等學院

1st 

self-financing institution offers ECE teachers'
training programmes in Hong Kong
全港首間自資大專院校提供教師培訓課程

1st 

self-financing tertiary institution in Hong
Kong offers the Certification Course for
Kindergarten Principals in Hong Kong
全港首間自資大專院校提供幼稚園校長證書課程



YEW CHUNG COLLEGE 耀中幼教學院
OF EARLY CHILDHOOD EDUCATION



ECE specialised concentrations*
4 個幼教專修範疇*



Graduates could obtain 4 professional qualifications
required to be an ECE educator in Hong Kong^
畢業生可獲取 4 個幼教工作相關專業資格^



Kindergarten as practicum partners
超過 50 間幼稚園實習夥伴



Annual budget spent on ECE researches and projects
每年超過 35% 預算用於發展幼教相關研究和項目



Students awarded with scholarships
and awards for admissions
82% 學生獲得獎學金及獎項



Children visited Pamela Peck Discovery Space (PPDS)
living laboratory annually
每年超過 28,000 名孩子體驗「耀學園」學習實驗室



Years of history, with the completion of a novel
“B to P” (from Baby to Postgraduate) Pathway
超過 90 年歷史，成就「從嬰兒到研究生」全學段教育

* Applicable to Bachelor's Degree programme
* 適用於學士課程

^ Applicable to Bachelor's Degree and Higher
Diploma programmes
^ 適用於學士及高級文憑課程

Student Testimonials 學生分享

Our teachers used their extensive teaching to help us efficiently acquire professional knowledge and build a solid learning foundation during our four years at YCCECE.

Additionally, the college offers us a variety of outside-the-classroom opportunities for practical experience, including but not limited to PPDS, kindergartens, and early childhood education facilities. I completed my practicum at special education facilities as well as local and international kindergartens. Through participating in these practicum experiences, I believe I improved my observational skills, which will be useful when I enter the field of early childhood education in the future.

在學院的四年期間，老師以豐富的教學經驗，令我們有效掌握專業知識，得以奠定良好的學習基礎。此外，學院更為我們提供了不少課堂外的實戰機會，地點包括但不限於眾多幼稚園及幼教機構。我有幸曾到國際幼稚園、本地幼稚園及特殊教育機構進行實習。我認為，透過這些實習機會，培養了自身觀察能力等的實務技巧，更能助我未來投身於幼教行業。

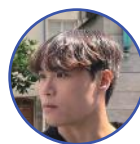


Lam Yan Ying Myra
林欣堂

BEdECE Graduate
幼兒教育榮譽學士畢業

I joined YCCECE in 2021. During my studies, I realized the significant impact that an outstanding kindergarten teacher has on children's growth. This inspired me to become an exceptional early childhood educator. I hope to continuously enhance my educational knowledge and teaching skills to positively influence children's growth and development.

在 YCCECE 的學習已經踏入第三年了，我意識到一名優秀的幼稚園教師對孩子的成長有著重大的影響，這激勵著我成為一名優秀的幼兒教育工作者，我希望能夠持續提升我的教育知識和教學技能，對孩子的成長和發展產生積極的影響。

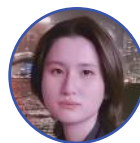


Cheung Tsun Pong
張峻邦

BEdECE Student
幼兒教育榮譽學士學生

Through my journey as a Year 2 Higher Diploma in Early Childhood Education student, I have come to realize that education extends far beyond the confines of textbooks. It encompasses the essence of personal growth, exploration, and the ability to inspire and enlighten others.

作為高級文憑二年級學生的我逐漸明白：教育從不應僅限於課本所授，更應透過自身的追求和創造，用生命啟發生命。



Qin Shixin Ivy
秦詩欣

HDECE Graduate
幼兒教育高級文憑畢業生

Admission Requirements 入學要求

Programme 課程	BEdECE 幼兒教育榮譽學士	HDECE 幼兒教育高級文憑	DECEC 幼兒教育與 照顧文憑
	Year 1 Entry 一年級入學		
HKDSE 香港中學文憑試	<p>HKDSE 332A2</p> <p>Including Level 3 in Chinese Language and English Language, Level 2 in Mathematics, "Attained" (A) in Citizenship and Social Development, plus Level 2 in one elective/ "Attained" in one Applied Learning subject</p> <p>香港中學文憑試達 332A2</p> <p>包括中國語文科和英國語文科達 3 級、數學科達 2 級、公民與社會發展科取得「達標」(A) 成績、及一科選修達 2 級/應用學習科目取得「達標」(A) 成績</p>	<p>HKDSE 2.2.2.2.2</p> <p>Level 2 in 5 subjects including Chinese Language and English Language. If the 5 subjects include Citizenship and Social Development / Applied Learning subjects, the minimum requirement is "Attained"</p> <p>香港中學文憑試達 2.2.2.2.2</p> <p>5 個科目達 2 級，包括中國語文科和英國語文科；如該五科中包括公民與社會發展科 / 應用學習科目，必須取得「達標」(A) 成績</p>	Completion of Secondary Six or equivalent 完成中六或同等學歷
HKAL 香港高級程度會考	<ul style="list-style-type: none"> Grade E in 2 A-Level subjects or equivalent AS-Level subjects; and Grade E in Chinese Language and Culture and Use of English; and Grade E in 5 subjects in HKCEE including Chinese Language and English Language 2 科 A-Level 科目或同等 AS-Level 科目達 E 級；及中國語文及文化科及英語運用科達 E 級；及 香港中學會考 5 科達日級包括中國語文科和英國語文科 	<ul style="list-style-type: none"> Grade E in 1 A-Level subject or 2 AS-Level subjects; and Grade E in 5 subjects in HKCEE including Chinese Language and English Language 1 科 A-Level 科目或 2 科 AS-Level 科目達 E 級；及 香港中學會考 5 科達 E 級，包括中國語文科和英國語文科 	N/A 不適用 *3
IB Diploma IB 文憑	<ul style="list-style-type: none"> A score of 24; and Level 4 in English Language 總分達 24 分；及 英國語文科達 4 級 	<ul style="list-style-type: none"> Level 4 in 2 IB subjects; and Level 3 in English Language 2 科 IB 科目達 4 級；及 英國語文科達 3 級 	N/A 不適用 *3
GCE-A Level (AL)	<ul style="list-style-type: none"> Grade E in 2 A-Level subjects or 1 A-Level subject plus 2 AS-Level subjects, other than English Language and Chinese Language; and Grade E in English Language at A/AS-Level or Grade C in English Language in GCE-O-Level / GCSE / IGCSE or Grade B in English (Second Language) in GCE-O-Level / GCSE / IGCSE 2 科 A-Level 科目達 E 級，或 1 科 A-Level 科目及 2 科 AS-Level 科目達 E 級，不包括英國語文科及中國語文科；及 A/AS-Level 英國語文科達 E 級，或 GCE- O-Level / GCSE / IGCSE 英國語文科達 C 級或 GCE-O-Level / GCSE / IGCSE 英國語文科 (第二語言) 達 B 級 	<ul style="list-style-type: none"> Grade E in 1 A-Level subject, other than English Language and Chinese Language; and Grade E in English Language at A/AS-Level or Grade C in English Language in GCE-O-Level / GCSE / IGCSE or Grade B in English (Second Language) GCE-O-Level / GCSE / IGCSE 1 科 A-Level 科目達 E 級，不包括英國語文科及中國語文科；及 A/AS-Level 英國語文科達 E 級，或 GCE-O-Level / GCSE / IGCSE 英國語文科達 C 級，或 GCE-O-Level / GCSE / IGCSE 英國語文科 (第二語言) 達 B 級 	N/A 不適用 *3
Mainland China 中國內地	<ul style="list-style-type: none"> Meet the 2nd cut-off line of the respective province for admission to the Mainland China's key universities in JEE; and Score of 100 in JEE English Language or English Language Proficiency comparable to IELTS score of 5.5 普通高等學校招生全國統一考試 (高考) 成績達所屬省市報讀第二批本科分數線；及 普通高等學校招生全國統一考試 (高考) 英語科達 100 分或英語語言能力相等於雅思 5.5 *1 	<ul style="list-style-type: none"> Completion of Senior Secondary 3; and Satisfactory results in JEE, including English Language or equivalent 完成高中三年；及 普通高等學校招生全國統一考試 (高考) 取得滿意成績 (包括英語科)，或同等學歷 	N/A 不適用 *3
Others 其他資格	<p>Successful completion of Year 1 of recognised Associate Degree / Higher Diploma or other acceptable alternative qualifications, including non-local qualifications obtained in or outside Hong Kong</p> <p>成功完成認可副學士學位或高級文憑一年級，或其他在香港或海外獲得之可接受的同等學歷</p>	<p>Successful completion of QF Level 3 programme e.g., Yi Jin Diploma, Diploma in Foundation Studies or other acceptable alternative qualifications, including non-local qualifications obtained in or outside Hong Kong</p> <p>成功完成資歷架構第三級課程，例如毅進文憑、基礎課程文憑，或其他在香港或海外獲得之可接受的同等學歷</p>	N/A 不適用 *3
	Year 3 Entry 三年級入學		
	<p>Holders of Higher Diploma awarded in the Early Childhood Education area</p> <p>持有與幼兒教育相關的高級文憑 *2</p>		
Mature 成年學生	--	Age 21 or above 21 歲或以上	Age 20 or above 20 歲或以上

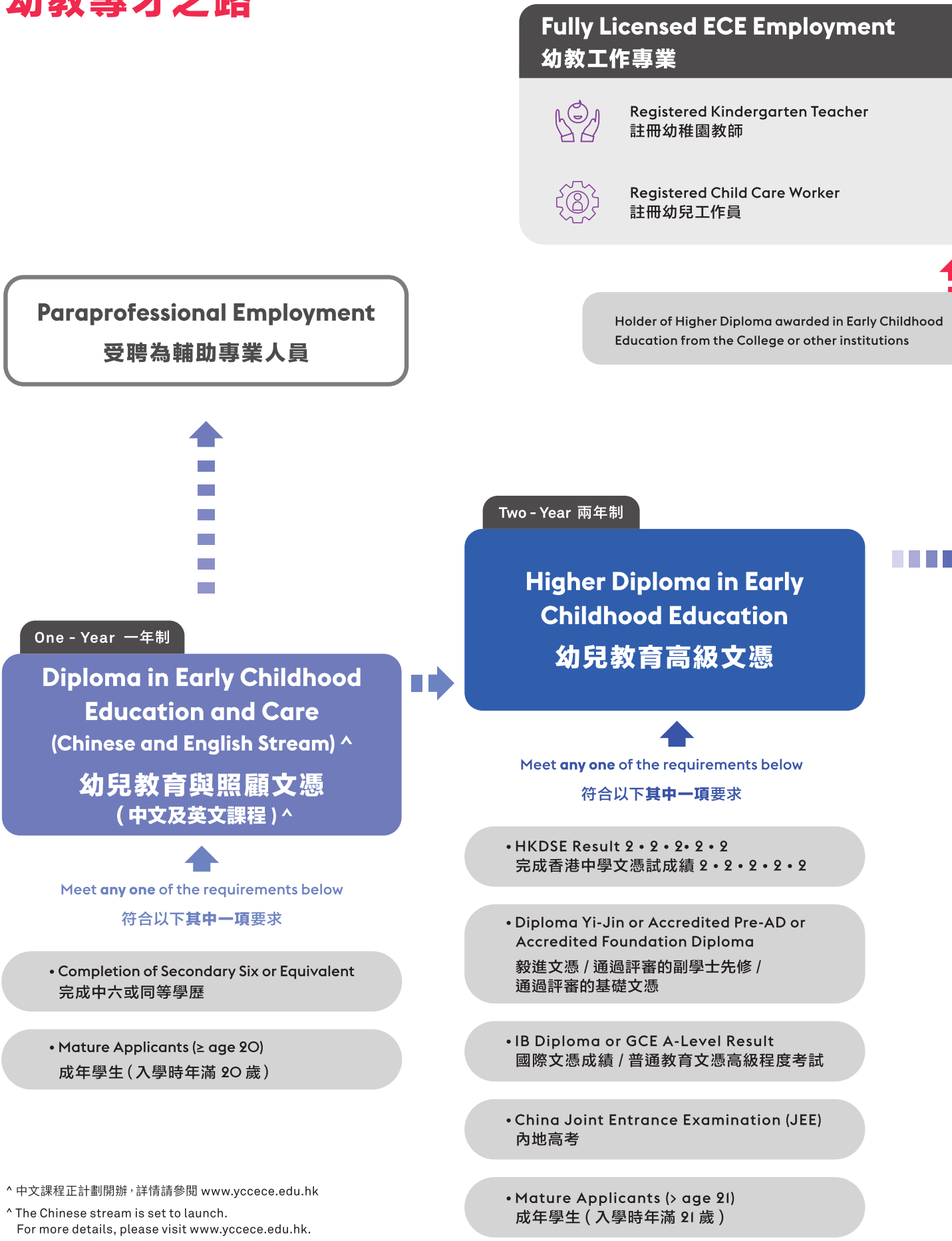
*1 Applicable to applicants who are holders of valid identity documents/entry permits issued by the HKSAR Government that allows them to study in Hong Kong without a study visa.
只適用於持有香港特別行政區簽發的有效身份證文件 / 簽證來港就讀，而不須申請學生簽證之人士。

*2 Holders of Higher Diploma awarded in the Early Childhood Education area must also be recognised as registered kindergarten teachers by the Education Bureau of the HKSAR Government and obtain registration to work as Child Care Workers and Child Care Supervisors by the Social Welfare Department of the HKSAR Government.
持有與幼兒教育相關高級文憑的申請人，必須獲香港特區政府教育局認可為註冊幼稚園教師並獲社會福利署認可為註冊幼兒工作人員及幼兒中心主管。

*3 Subject to the actual circumstance of the student, please contact the college.
根據學生實際情況而定，請與學院聯絡。

Study Pathway in YCCECE

幼教專才之路



4

Professional Qualifications 四個專業資格認證



Registered Child Care Supervisor
註冊幼兒中心主管



Qualified Special Child Care Worker
認可特殊幼兒工作人員

Postgraduate Programmes 研究生課程

launching in AY 2025/26*
2025/26 學年開辦 *

**Postgraduate Diploma
in Education (Early
Childhood Education)**
學位教師教育深造文憑
(幼兒教育)

One-Year Full Time
一年全日制

**Master of Education
教育碩士**

Medium of Instruction
Options: Chinese or English
設有中文及英文授課

One-Year Full-Time or
Two-Year Part-Time
一年全日制或兩年兼讀制

Professional Development 專業發展

Certification Course for Kindergarten Principals 幼稚園校長證書課程

Meet any one of the requirements below
符合以下其中一項要求

Four-Year (Year 1 Entry)/ Two-Year (Year 3 Entry)
四年制 (一年級入學) / 兩年制 (三年級入學)

Bachelor of Education (Honours) In Early Childhood Education 幼兒教育榮譽學士

Meet any one of the requirements below
符合以下其中一項要求

• HKDSE Result 3 • 3 • 2 • A • 2
香港中學文憑試成績 3 • 3 • 2 • A • 2

• Holder of Higher Diploma/
Associate Degree/Degree or above
高級文憑 / 副學士 / 學士或以上

• IB Diploma or GCE A-Level Result
國際文憑成績 / 普通教育文憑高級程度考試

• Holder of Bachelor of Education (Hons)
in Early Childhood Education (BEdECE)
or equivalent/ Post-graduate Diploma
in Education (Early Childhood Education)
(PGDE(ECE)), plus at least three years'
teaching experience in a kindergarten
持有「幼兒教育學士學位」或同等學歷 / 「學
位教師教育文憑 (幼兒教育)」, 以及具有最
少三年幼稚園教學經驗

• Serving kindergarten principals
在職幼稚園校長

4

Concentrations 四個專修範疇

- Children with Special Educational Needs (SEN)
有特殊教育需要的兒童 (SEN)
- Infant & Toddler Education and Care (INTOD)
嬰幼兒教育與照顧
- Innovations and New Literacies (INL)
創新與新素養
- Teaching Chinese as a Second Language (TCSL)
漢語作為第二語言教學

*Master of Education (MEd): Having received the official approval from the Education Bureau, the College is now in the process to register the Master of Education Programme into the Qualifications Register of the Hong Kong Council for Accreditation of Academic and Vocational Qualifications.

教育學碩士 (MEd): 教育學碩士課程已獲教育局正式批准, 學院現正申請註冊於香港學術及職業資歷評審局的資歷名冊上。

Postgraduate Diploma in Education (Early Childhood Education) (PGDE(ECE)): Following the official approval from the Education Bureau, the Postgraduate Diploma in Education (Early Childhood Education) Programme is recognised as fulfilling the training requirements for registration as kindergarten teachers. The College is now in the process of acquiring the Child Care Workers, Child Care Supervisors, and Special Child Care Workers licences of the Social Welfare Department.

教育深造文憑 (幼兒教育) (PGDE(ECE)): 教育深造文憑 (幼兒教育) 課程已獲教育局正式批准獲取幼稚園教師資格, 學院現正申請社會福利署的幼兒工作人員、幼兒中心主管及特殊幼兒工作人員牌照。

Last Updated: 28 January 2025 Information here is subject to change. Please refer to www.yccece.edu.hk regularly for updates.

最後更新日期: 2025年1月28日 此處資訊可能會有更新, 請定期參閱 www.yccece.edu.hk 以獲取最新資訊。

Bachelor of Education (Honours) in Early Childhood Education

幼兒教育榮譽學士

4-Year (Year 1 entry) / 2-Year (Year 3 entry) / 4-year part time
四年制 (一年級入學) / 兩年制 (三年級入學) / (四年制兼讀)



The Bachelor of Education (Honours) in Early Childhood Education (BEdeCE) programme aims to nurture world-class early childhood educators who are knowledgeable in contemporary and international ECE theories and practice and can be strong advocates for children and their families.

The BEdeCE programme is a multi-entry and multi-exit programme, providing great flexibility to students and supporting lifelong learning. Those requiring pre-service training will acquire all 4 ECE Professional Qualifications in Hong Kong, enabling them to be registered with the Education Bureau (EDB) and Social Welfare Department (SWD). Those who are already ECE practitioners in the field can also pursue in-service training via a top-up degree (Year 3 entry), paving the way towards Kindergarten Principal certification.

幼兒教育榮譽學士課程旨在培育世界級的幼教工作者。修讀本課程的學生將具備穩固的理論基礎，知識層面廣闊，在掌握現代及國際上最新的幼教理論及教育法之同時，更會成為他們家庭及下一代孩子的倡導者。

幼兒教育榮譽學士學位是一個多階進出課程，為不同需要的學生提供最適切的學習路徑，推動終身學習。本專業培訓課程，已獲教育局及社會福利署認可，畢業生可直接獲取於香港從事幼教工作者必備的四個專業資格。此外，註冊幼稚園教師可直接入讀學士學位課程的三年級，以便完成學士學位課程後，將來修讀幼稚園校長證書課程。

Programme Objectives

- 1 Engage in lifelong learning with capability for independent learning and critical thinking
- 2 Pursue career, further study and ongoing professional development
- 3 Enhance career objectives in ECE or related areas
- 4 Demonstrate ability to critically review, consolidate and extend systematic knowledge and skills about the holistic nature of child development
- 5 Function as effective team members of a multidisciplinary team and exercise appropriate judgment in the planning, design, evaluation, and management of activities in various areas of involvement
- 6 Demonstrate leadership and the ability to apply knowledge and skills in ECE to meet the increasingly diverse needs of children and families in Hong Kong, Mainland China, and the world

課程目標

- 1 參與終身學習，具備獨立學習和批判性思維的能力
- 2 追求事業、持續進修和專業發展
- 3 提高幼教或相關領域的職業目標
- 4 具有批判性地審查、鞏固和擴展關於兒童發展的整體性的系統知識和技能的能力
- 5 作為多學科團隊的有效團隊成員，在各個參與領域的活動的規劃、設計、評估和管理中做出適當的判斷
- 6 展示領導能力和應用幼教知識和技能的能力，以滿足香港、中國內地和世界各地兒童和家庭日益多樣化的需求



Professional Qualifications

- Recognised by the Education Bureau (EDB) for the Certificate in Early Childhood Education [C(ECE)] qualification, and as meeting the requirement for registration as Kindergarten Teachers under the Education Ordinance
- Recognised by the Social Welfare Department (SWD) for registration as Child Care Workers and Child Care Supervisors
- Be qualified as Special Child Care Workers with the Social Welfare Department (SWD).

專業資格

- 符合教育局對「合格幼稚園教師」的培訓要求，及可註冊為幼稚園教師
- 獲社會福利署認可註冊為「幼兒工作員」及「幼兒中心主管」
- 獲社會福利署認可之「特殊幼兒工作員」資歷

To better prepare myself in meeting the all-graduate kindergarten teaching force trend and the requirement of pursuing kindergarten principalship in the future, I decided to continue my study at YCCECE after graduating from the Higher Diploma programme. As a Bachelor's Degree student, we received an advanced practicum opportunity that lasted for 8 weeks. Also, we got the chance to participate in overseas exchange tours which broadened our horizons and developed our global ECE perspective.

Employed at Yew Chung International School (Shanghai) through the Yew Chung Yew Wah Teachers of Tomorrow Scheme
透過「耀中耀華明師計劃」受聘請於上海耀中國際幼稚園

4-Year Full-Time
四年全日制

Curriculum Components	QF Credits
Child Studies	30
Children with Diverse Needs	40
Curriculum in ECE	70
Educational Management and Sustainable Development of ECE Settings	20
Foundations of ECE	40
Parental Involvement in ECE	20
Practicum	112
Capstone Project	69
Common Core Curriculum	140
Specialised Concentrations	QF Credits
Children with Special Educational Needs (SEN)	
Infant and Toddler Education and Care (INTOD)	40
Innovations and New Literacies (INL)	
Teaching Chinese as a Second Language (TCSL)	
Total QF Credits	581

Career Opportunities

- Kindergarten Teacher / Child Care Worker
- Executive in early childhood education settings
- Kindergarten Principal/ Child Care Supervisor
- Research opportunities in tertiary institutions or other organisations

為了就未來幼師學位化做好準備及為日後修讀幼稚園校長證書課程鋪路，我選擇於耀中幼教學院完成幼兒教育高級文憑後，繼續於學院修讀榮譽學士課程。課程的高年級同學除了可享有八星期高階實習機會外，更可以到外國交流，了解其他地方的幼教發展，開拓視野。



Chan Ka Man Carmen
陳加旻

2020 BEdECE (Full-time Graduate)
2020 幼兒教育榮譽學士 (全日制) 畢業

課程組成部分	資歷學分
兒童研究	30
多元學習需要兒童	40
幼兒教育課程	70
幼兒教育管理與可持續發展	20
幼兒教育基礎	40
幼兒教育中的家長參與	20
實習	112
專題研究項目	69
共同核心課程	140
專修範疇	資歷學分
有特殊教育需要的兒童 (SEN)	
嬰幼兒教育與照顧 (INTOD)	40
創新與新素養 (INL)	
漢語作為第二語言教學 (TCSL)	
總資歷學分	581

就業前景

- 幼稚園老師 / 幼兒工作人員
- 幼兒教育機構行政主管
- 幼稚園校長 / 幼兒中心主管
- 於高等院校或其他機構從事學術研究



QF Level: 5
資歷級別: 5

Qualification Framework (QF) Information
QR Registration Number: 18/000441/L5
Registration Validity Period:
01/09/2018 - 31/08/2028

資歷架構
資歷名冊: 18/000441/L5
登記有效期: 01/09/2018 - 31/08/2028

Choice of Concentrations

升讀三年級可選擇不同專修範疇

Other than the General ECE concentration, full-time BEECE students can choose one of the concentrations when they enter Year 3 and gain a specific area of expertise, which prepares them well to be ECE experts.

Current preschool workers who have obtained the qualifications of kindergarten teacher, child care worker and child care centre supervisor can also obtain the professional qualification of special child care worker after completing this course.

幼兒教育榮譽學士（全日制）的學生於升讀三年級時將可以選擇其中一個專修範疇，並修讀相關專修科目，進一步加強專科專業知識，成為幼教專家。

已獲取幼稚園老師、幼兒工作員及幼兒中心主管資格的現職幼教工作者，於完成本課程後亦可獲取特殊幼兒工作員的專業資格。

Children with Special Educational Needs (SEN)

- Current Trends in Inclusion
- Instructional Strategies for Children with Multiple Disabilities
- Intervention Strategies for Supporting Children's Communication Skills
- Developing Life Skills: Assistive Technology for Young Children with Physical Disabilities

有特殊教育需要的兒童 (SEN)

- 融合教育的當前發展
- 多重障礙兒童的教學策略
- 支援兒童溝通技能的有效干預策略
- 生活技能發展：肢體障礙兒童的輔助性科技

Infant and Toddler Education and Care (INTOD)

- Child Development in the Context of Families, Schools and Communities
- Assessment Purposes and Approaches for Describing Infants and Toddlers in their Environments
- Curriculum and Intentional Planning of Interventions for Infants and Toddlers
- Collaborative Leadership for Infant-Toddler Systems

嬰幼兒教育與照顧 (INTOD)

- 家庭、學校與社區背景下的兒童發展
- 在日常環境中的嬰幼兒評估目標與方法
- 嬰幼兒課程及干預設計
- 嬰幼兒系統的協作領導模式

Innovations and New Literacies (INL)

- Nature and Living
- Play and Learning in the 21st Century
- Mathematics in Early Childhood Education
- New Literacies in Early Childhood Education

創新與新素養 (INL)

- 自然與生活
- 21世紀遊戲與學習
- 幼兒數學教育
- 幼兒教育新素養

Teaching Chinese as a Second Language (TCSL)

- Second Language Teaching and Learning in Hong Kong
- Understanding Chinese Language Learning in Young Children
- Pedagogy in Teaching Chinese as a Second Language
- Curriculum and Teaching Material Design for TCSL

漢語作為第二語言教學 (TCSL)

- 香港第二語言教育學
- 幼兒的漢語學習
- 漢語作為第二語言教學法概論
- 漢語作為第二語言的課程與教材設計

Higher Diploma in Early Childhood Education

幼兒教育高級文憑

2-Year full-time
兩年全日制



The 2-Year Higher Diploma in Early Childhood Education (HDECE) is a pre-service training programme aiming to provide high quality pre-service training in ECE with an international and contemporary focus, as well as with a foundation in General Education (including Languages). The Programme is to prepare students with solid knowledge and competency for further education and careers. Moreover, because of the College's policy of using 100% English as the medium of instruction (except for Chinese courses), it has provided a particularly valuable opportunity to the Non-Chinese Speaking students. Graduates will gain all 4 ECE qualifications in Hong Kong, eligible to work as Registered Kindergarten Teachers with the Education Bureau (EDB), Child Care Workers/ Supervisors and Special Child Care Workers with the Social Welfare Department (SWD).

兩年制的幼兒教育高級文憑課程屬職前培訓課程，旨在為學生提供以國際化和現代化為重點的高質素幼兒教育職前培訓，以及通識教育（包括語言）的基礎。課程旨在為學生提供紮實的知識和能力，為他們繼續學習和未來的職業生涯做好準備。此外，學院採用100%英語作為教學語言（中文課程除外）的政策，為非華語學生提供了非常寶貴的學習機會。畢業生將獲取四個專業資格包括：教育局認可之註冊幼稚園老師，社會福利署認可的幼兒工作員、幼兒中心主管及特殊幼兒工作員。

Programme Objectives

- 1 Engage in lifelong learning with capability for independent learning and critical thinking
- 2 Pursue further study, professional development and / or career in Early Childhood Education
- 3 Acquire and demonstrate knowledge and skills about children's development in the early years, both typical and atypical, and the role of contemporary teaching practices, culture, and the family as influences that shape children's development
- 4 Function as effective team members of a multidisciplinary team and contribute to and coordinate activities in various areas
- 5 Demonstrate competent language ability, IT, interpersonal and other generic skills as well as awareness of many issues of Hong Kong, China and the world, including professional standards and ethics guiding early childhood education and care

課程目標

- 1 具備獨立學習和批判性思維的能力，繼續終身學習之旅
- 2 在幼教領域繼續深造、專業發展及就業
- 3 了解並展示有關兒童早期發展（典型或非典型）的知識和技能，以及現代化教學實踐、文化和家庭對兒童發展的影響
- 4 在跨學科團隊中，有效地為不同領域的活動作出貢獻及協調
- 5 展現良好的語言能力、資訊科技、人際交往和其他通用技能，以及對中國香港、內地和世界問題的認識，具備指導幼兒教育和照顧的專業標準和道德規範

Curriculum Components	QF Credits
Child Studies	24
Foundations of ECE	24
Curriculum in ECE	60
Children with Diverse Needs	48
Educational Management and Sustainable Development of ECE Settings	12
Parental Involvement in ECE	24
Practicum	42
Common Core Curriculum	106
Total QF Credits	340

課程組成部分	資歷學分
兒童研究	24
幼兒教育基礎	24
幼兒教育課程	60
多元學習需要兒童	48
幼兒教育管理與可持續發展	12
幼兒教育中的家長參與	24
實習	42
共同核心課程	106
總資歷學分	340

HDECE students will have practicum opportunities in selected premium international and local kindergartens, including exclusive placement at Yew Chung International School (preschools).

Students will have the opportunities to be taught by world-class visiting scholars and to attend international conferences to broaden their global perspectives in ECE.

幼兒教育高級文憑畢業生將獲安排到國際學校幼稚園、本地幼稚園及特殊教育機構進行實習，當中包括獨家耀中國際學校（幼稚園）的實習機會。

學生亦會獲世界知名的幼教專家親自授教，並有機會出席國際研討會，以加強學生們在幼教方面的全球視野。

The College offers us diverse learning experiences beyond ECE theories such as creative arts and STEM education. These stimulate our understanding of children's learning needs from their own point of view. The learning journey is truly rewarding as we learn to see the world from a child's perspective and it helps us craft child-centered activities that fit their interest.

感謝學院提供多元化的課堂學習經驗，例如 creative arts 及 STEM 讓我以第一身感受了解幼兒的學習需要。這些經驗令我更了解如何從幼兒的角度思考，並有助我製造幼兒感興趣和有利他們發展的活動。



Fok Suen Yau Sylvester
霍宣佑

2021 HDECE Graduate
2021 幼兒教育高級文憑畢業生

Professional Qualifications

- 1 Recognised by the Education Bureau (EDB) for the Certificate in Early Childhood Education [C(ECE)] qualification, and as meeting the requirement for registration as Kindergarten Teachers under the Education Ordinance
- 2 Recognised by the Social Welfare Department (SWD) for registration as Child Care Workers and Child Care Supervisors
- 3 Be qualified as Special Child Care Workers with the Social Welfare Department (SWD).

Career Opportunities

- Kindergarten Teacher / Child Care Worker
- Executive in early childhood education settings
- Kindergarten Principal/ Child Care Supervisor

專業資格

- 1 符合教育局對「合格幼稚園教師」的培訓要求，及可註冊為幼稚園教師
- 2 獲社會福利署認可註冊為「幼兒工作人員」及「幼兒中心主管」
- 3 獲社會福利署認可之「特殊幼兒工作人員」資歷

就業前景

- 幼稚園老師 / 幼兒工作人員
- 幼兒教育機構行政主管
- 幼稚園校長 / 幼兒中心主管



QF Level: 4
資歷級別：4

Qualification Framework (QF) Information

QR Registration Number: 18/000466/L4
Registration Validity Period:
29/06/2018 - 31/08/2026

資歷架構

資歷名冊：18/000466/L4
登記有效期：29/06/2018 - 31/08/2026

Diploma in Early Childhood Education and Care

幼兒教育與照顧文憑

1-Year full-time
一年全日制



The DECEC Programme is a foundational programme for all secondary school leavers to prepare them for further study/work, and to provide balanced general education study and introductory knowledge and skills in the area of ECE.

Besides, the 100% English Medium of Instruction (except for Chinese courses) environment at YCCECE provides ample opportunities for students to practice and raise their English proficiency which gives them a competitive edge for further study or employment.

Programme Objectives

- 1 Engage in lifelong learning with the capability for independent learning.
- 2 Pursue further study in local QF Level 4 programmes or in overseas programmes and/or work in various fields including Early Childhood Education and Care.
- 3 Function as an effective team member within a learning community.

Curriculum Components	QF Credits
Early Childhood Education and Care	60
Foundations of ECE	12
Placement	22
Languages	40
Total QF Credits	134

Graduation Pathways

- 1 Articulate to full-time year Higher Diploma programme of the College
- 2 Articulate to Higher Diploma or Associate Degree programmes offered in Hong Kong or overseas countries

The Diploma in Early Childhood Studies (DECS) Programme helped us build our ECE foundation through learning basic ECE theories and concepts. During my 2-week placement, I was truly inspired by the teachers who really live the life of an ECE educator. The experience motivated me to be a great ECE educator in the future.

*This programme is superseded by the current programme – “Diploma in Early Childhood Education and Care”.
* 該課程已被現有的「幼兒教育與照顧文憑課程」取代。

幼兒教育與照顧文憑為基礎課程，適合所有中六畢業生，並授予學生通用知識及有關幼兒教育範疇的知識和技巧，為進一步學習及 / 或工作做好準備。

另外，耀中幼教學院的全英文教學（中文課程除外）環境能大大提升學生的英語水平，有助學生不論在升學及就業方面增加競爭力。

課程目標

- 1 具備獨立學習的能力，繼續終身學習之願
- 2 銜接本地資歷架構第 4 級課程或海外課程，及 / 或在幼兒教育與照顧不同領域工作
- 3 在學習共同體中有效發揮作用

課程組成部分	資歷學分
幼兒教育與照顧	60
幼兒教育基礎	12
實踐	22
語言	40
總資歷學分	134

升學途徑

- 1 銜接本學院全日制高級文憑課程
- 2 銜接香港或海外高級文憑或副學士課程

修讀幼兒學文憑課程，不但讓我認識幼教的基礎，於幼稚園考察的兩星期中更令我感受到一班現職幼稚園老師的熱誠，讓我更希望成為與他們一樣優秀的幼教工作者。



Sanna Batool Iqbal

2021 HDECE Graduate
2019 DECS* Graduate
2021 幼兒教育高級文憑畢業生
2019 幼兒學文憑畢業生 *



QF Level: 3
資歷級別: 3

Qualification Framework (QF) Information
QR Registration: 24/000321/L3
Registration Validity Period: 01/09/2024 - 31/08/2026

資歷架構
資歷名冊 24/000321/L3
登記有效期: 01/09/2024 - 31/08/2026

Certification Course for Kindergarten Principals

幼稚園校長證書課程



This six-month QF Level 4 recognized programme is designed to equip aspiring kindergarten teachers and newly appointed kindergarten principals with the essential leadership skills and competencies required for effective school administration. Tailored for practitioners in both local and international Early Childhood Education settings, the course offers a dynamic curriculum that features a diverse selection of electives, allowing participants to customize their learning experience and develop specialized expertise. Delivered by an experienced team of instructors, the course covers a wide range of topics, including Management and Organization, Learning and Teaching, School Culture and Support for Children, Child Development and more.

The exclusive access to the Pamela Peck Discovery Space at YCCECE provides a valuable exposure to innovative practices of learn-through-play. Graduates of this course are eligible to join the YCCECE Alumni Association, which is part of the broader Yew Chung Yew Wah alumni network. This provides access to a wider professional network that can support their career development and growth.

本課程為期 6 個月，獲得資歷架構第 4 級認可，課程旨在培養有志成為高效能幼稚園校長的老師及新任校長，幫助他們掌握有效學校管理所需的領導技能和專業能力。課程針對本地和國際幼兒教育機構中的專業教育工作者，提供生動豐富的課程內容，包括一系列多元化的選修課程，讓學員能夠根據個人興趣和需要來定制學習體驗，並發展其專業專長。課程由經驗豐富的教學團隊授課，涵蓋管理與組織、學習與教學、學校文化與兒童支援，以及兒童發展等不同專題。

學員可以專享到耀中幼教學院「耀學園」觀摩的機會，耀學園是一個為兒童特別設計的學習環境，學員可領會「從遊戲中學習」的創新及實踐。為學員提供持續支持和寶貴的交流機會。學員畢業後可加入學院校友會，此校友會是耀中耀華校友網絡的一員。透過耀中耀華校友網絡，畢業學員有更廣泛的專業網絡，支持他們的職業發展和成長。

Programme Structure

The Certification Course includes both core and elective modules, totaling 120 hours of face-to-face instructional time. Additionally, participants are required to complete a term paper assignment that requires 30 hours of self-study.

課程結構

本證書課程包含主修科和選修科，合共 120 小時面授課時。此外，學員亦需提交一份 30 個自學小時的學期論文。

Career Prospect

This certification course is recognised by the Education Bureau (EDB), those aspire to become kindergarten principals in Hong Kong must obtain this qualification.

畢業前景

本證書課程獲教育局認可，有志成為幼稚園校長的人士必需獲得此資格。



QF Level: 4
資歷級別: 4

Course Code: 35C150234
QR Registration Number: 23/000219/L4
Registration Validity Period:
01/03/2023 - 31/08/2025

課程編號: 35C150234
資歷名冊登記號碼: 23/000219/L4
登記有效期: 01/03/2023 - 31/08/2025

Professional Diploma in Special Child Care Work 特殊幼兒工作專業文憑



This 8-month QF Level 4 recognized programme is designed to qualify participants for registration as Special Child Care Workers recognized by the Social Welfare Department. Our highly qualified local and international teaching team, who brings diverse perspectives and expertise to the classroom, delivers a programme that helps participants acquire valuable knowledge and experience. The participants attend our hands-on 'Professional Integrated Learning' course expands participants' learning beyond the classroom. These unique learning experiences will help them bridge the gap between theory and practice, ensuring they are well-prepared for their future practicum and practical work.

Leveraging our extensive network of Yew Chung Yew Wah Education Network, participants will have access to a wealth of international and local kindergarten internship opportunities. Participants can gain real-world experience in diverse settings, applying their knowledge and developing essential skills for a successful career in early childhood education.

本課程為期 8 個月，獲得資歷架構第 4 級認可，旨在培訓學員成為社會福利署認可的註冊特殊幼兒工作人員。學院的資深本地及國際導師團隊資擁有不同背景和專業資格，在課程中向學員傳授寶貴的知識和經驗。學員學習體驗式「專業綜合學習課程」，開拓課堂以外的學習領域。這獨特學習體驗課堂將有助於銜接理論與實踐，確保學員為未來的實習及實際工作做好充分準備。

透過耀中耀華教育網絡可為學員提供國際和本地幼稚園實習機會。學員可在不同環境中獲得實際工作經驗，應用所學知識並發展所需技能，為幼兒教育事業打開成功之門。

Programme Structure

This programme comprises two parts: core subjects and practicum, totaling 272 hours of face-to-face instructional time. Students will have to submit a study report and / or assignment at the end of each course.

課程結構

本課程包括兩部分：核心科目和實習，合共 272 小時面授課時。學員需在每門課程結束時提交學習報告和 / 或作業。

Career Prospect

Graduates will be recognised having acquired training equivalent to the One-year In-service Course in Special Child Care Workers (SCCW) of the Social Welfare Department. With the SCCW qualification, graduates will have better job opportunities in both local and international early childhood education settings, paving the way for a successful and fulfilling career.

畢業前景

畢業生將獲認可等同於完成修讀社會福利署一年制特殊幼兒工作人員在職課程的培訓。畢業學員可獲專業資格，成為註冊特殊幼兒工作人員，能在本地及國際幼兒教育機構工作，有助更好的事業發展。



QF Level: 4
資歷級別: 4

Course Code: 35F159755
QR Registration Number: 24/000357/L4
Registration Validity Period:
01/04/2024 - 31/08/2026

課程編號: 35F159755
資歷名冊登記號碼: 24/000357/L4
登記有效期: 01/04/2024 - 31/08/2026

Certificate in Child Rights and Safeguarding

兒童權利及保護證書



This comprehensive 30-hour QF Level 4 recognized course is meticulously designed to provide in-depth knowledge on child rights and protection in early childhood education (ECE) settings. It offers multidisciplinary perspectives from ECE professionals, medical doctors, lawyers and social workers. The course aims to deliver professional knowledge and training for effective child safeguarding to meet the urgent needs for appropriate training for pre-service teachers, childcare professionals and anyone working closely with children. To promote Child Rights Education, we empower early childhood educators and childcare professionals by presenting to them up-to-date knowledge and procedures for child advocacy. The course covers critical principles in child rights and equity approach, frameworks, research findings and statutory requirements on child protection (for example: Mandatory Reporting of Child Abuse Bill), equipping participants with practical skills to evaluate and implement effective strategies in their roles as dedicated educators and child advocates.

本精心設計的課程含 30 課時，獲資歷架構第 4 級認可，以幼兒教育專業人士、醫生、律師和社工等不同界別的角度，向學員提供有關幼兒教育 (ECE) 中兒童權利和保護的深入知識。課程旨在提供專業知識和培訓，使能有效保護兒童，滿足職前師資培訓、幼兒照顧專業人士和任何與兒童工作有關的人士的迫切培訓需求。為了推廣兒童權利教育，課程提供最新的兒童倡導知識和程序，以加強幼兒教育工作者和幼兒照顧專業人士的能力。內容涵蓋兒童權利和平等方法的關鍵原則、框架、研究發現和有關兒童保護的法定要求（例如《強制舉報虐待兒童條例》），使學員具備評估和實施有效策略的實用技能，以勝任專業教育工作者和兒童倡導者的角色。

Programme Structure

This programme totals 30 hours of face-to-face instructional time.

課程結構

此課程總計 30 小時的面授課時。

Career Prospect

This programme enhances graduates' competency for early identification and handling of suspected child abuse and advocacy, positioning themselves as experts in safeguarding child rights and well-being.

畢業前景

通過本課程，學員對疑似虐童個案的早期識別和處理能力得到提升。畢業學員將具備更強的專業照顧兒童能力，以及兒童倡導和保護的專業知識，能在保障兒童權益和福祉方面提供專業意見。



QF Level: 4
資歷級別：4

Course Code: 35C156747
QR Registration Number: 23/000645/L4
Registration Validity Period:
01/09/2023 - 31/08/2026

課程編號：35C156747
資歷名冊登記號碼：23/000645/L4
登記有效期：01/09/2023 - 31/08/2026

Certificate in Child Caregiving

嬰幼兒照顧證書課程



This 30-hour QF Level 3 recognized course is designed for childcare professionals, career path changers as well as new parents and grandparents who are seeking to enhance their knowledge and skills through a concise CPD programme. It focuses on essential early childhood development and caregiving concepts for children aged 0 to 8. Leveraging expert theories, the course emphasizes practical strategies and hands-on application. Participants will engage in group discussions to reflect and consolidate learning.

Key topics include positive strategies for maximizing a child's potential and learning, prominent theories of child development, research on brain development, language acquisition, the importance of play, and the key roles of adults. The course also highlights the value of effective caregiving practices and connects participants with families, early education specialists, and child rights advocates.

本課程包含 30 課時，獲得資歷架構第 3 級認可，專為現職兒童護理專業人員，有志提升相關知識和技能以轉換職業的人士，新手父母、祖父母等或通過修讀精簡的持續專業進修 (CPD) 課程，而設。課程著重教授 0 至 8 歲兒童的重要早期發展及其護理概念。教學方式包括：重點介紹兒童早期發展理論，實用的護理對策和操作技巧，並透過實踐應用、反思和小組討論，鞏固所學的知識和技能。

內容包括兒童發展理論精要，提升兒童潛能和學習能力的正向策略，大腦發展的研究成果，語言習得過程，遊戲在發展中的關鍵作用，以及成年人所扮演的重要角色。本課程亦強調實用護理技巧的重要性，並讓學員與家庭、早期教育專家和兒童權利倡導者互相交流。

Programme Structure

This programme totals 30 hours of face-to-face instructional time.

課程結構

此課程總計 30 小時的面授課時。

Career Prospect

Graduates will gain a QF Level 3 qualification which will be an asset to their career in child caregiving.

畢業前景

畢業學員將擁有資歷架構第三級的資格，成為專業早期兒童照顧人員。



QF Level: 3
資歷級別: 3

Course Code: 35C126236
QR Registration Number: 19/001161/L3
Registration Validity Period:
01/10/2019 - 31/08/2026

課程編號: 35C126236
資歷名冊登記號碼: 19/001161/L3
登記有效期: 01/10/2019 - 31/08/2026

The College offers short courses, corporate trainings and school-based professional development programmes tailored to meet the specific training needs of schools.

For course fee schedule, class venue, application and other details, please visit College website or scan the QR code below.

本學院提供短期課程，機構培訓及可按學校的需要，量身制定培訓內容。

有關課程收費、日期及時間、上課地點、申請入學及其他詳情，請瀏覽學院網頁或掃描以下二維碼。

Programme Details, Application and Enquiry
課程詳情、申請入學及查詢



課程資訊
Programmes Details



網上報名
Online Application

Our People 我們的團隊

World Class ECE Leadership

At YCCECE, we have global leaders and scholars in ECE supporting us on all levels – from governance to academic programme development, and from research to practice. They share our vision and passion, enabling YCCECE to remain at the forefront of the field.



世界級幼教顧問

耀中幼教學院的校務及教務管理、學術課程發展、研究以至專業實踐，均由本地及國際幼教專家掌舵，並秉承耀中的願景與熱誠，確保學院站在業界的最新發展的最前線。

Dr Betty Po King Chan 陳保琮博士

Chairperson,
Board of Governors

校董會主席

Honorary Degree of Doctor of Humane Letters, University of Illinois Urbana-Champaign	美國伊利諾大學香檳分校 榮譽人文學博士
Honorary Fellowship, Education University of Hong Kong	香港教育大學榮譽院士銜
Honorary Degree of Doctor of Laws, University of Bath	英國巴斯大學榮譽法學博士
President, Pacific Early Childhood Education Research Association (PECERA) Hong Kong Chapter	太平洋區幼兒教育研究學會 (香港分部) 主席
President, PECERA International (2012-2018)	太平洋區幼兒教育研究學會主席 (2012-2018)



Professor Susan Fowler Susan Fowler 教授

Honorary Advisor

榮譽顧問

BEdECE Programme Developer, YCCECE	耀中幼教學院幼兒教育 (榮譽) 學士學位課程發展顧問
Professor Emerita (Special Education), College of Education, University of Illinois Urbana-Champaign	美國伊利諾大學香檳分校教育系榮休教授 (特殊教育)
Council for Exceptional Children (CEC) J.E. Wallace Wallin Special Education Lifetime Achievement Award	特殊兒童委員會 J.E. Wallace Wallin 特殊教育終生成就獎



Professor Iram Siraj, OBE Iram Siraj 教授, OBE

Honorary Advisor

榮譽顧問

Professor of Child Development Education and Senior Research Fellow, Department of Education, University of Oxford	英國牛津大學教育系兒童發展教育教授及高級研究員
Research Professor, University of Wollongong, NSW	澳洲伍倫貢大學研究教授



Ms Shalini Mahtani, MBE 馬夏邇女士, MBE

Honorary Advisor

榮譽顧問

Founder and Chief Executive Officer, The Zubin Foundation	小彬紀念基金會創辦人兼行政總裁
---	-----------------



Professor Kerry Lee 李敬廉教授

President and Chair Professor of Child Development
校長暨兒童發展講座教授

PhD, Macquarie University
BA (Hons), Sydney University

博士學位，澳洲麥覺理大學
榮譽學士學位，澳洲悉尼大學

Named World's Top 2% Scientists by Stanford University
榮膺史丹福大學全球首 2% 頂尖科學家

Professor Kerry Lee brings a wealth of experience and expertise to the College. Prior to joining the College, Professor Lee held the position of Head of the ECE (Early Childhood Education) department and Director of the Center for Educational and Developmental Science at the Education University of Hong Kong.

Before that, Professor Lee was with the National Institute of Education (NIE) at Nanyang Technological University in Singapore, where he served as Head of Research at the Education and Cognitive Development Lab and Associate Dean at the Office of Educational Research. In his role as Associate Dean, he spearheaded the science of learning initiative and established the new Centre for Research in Child Development. Professor Lee was also the Head of the Centre for Research in Pedagogy and Practice. Prior to Singapore, he was an assistant professor at Bond University, the first private university in Australia.

Professor Lee's work has been widely published in prestigious journals, such as the Journal of Educational Psychology and Child Development. He is a member of the prestigious Society for Research in Child Development and the European Association for Research in Learning and Instruction, and serves on the editorial or review boards of several leading academic journals.

Professor Lee earned his Bachelor's degree from the University of Sydney and his Doctorate from Macquarie University in Sydney, Australia. He is a highly respected cognitive developmental psychologist, with a research focus on mathematical achievement, working memory, and the development of executive functioning.

In the past few years, Professor Lee has been repeatedly recognized by Stanford University as one of the top 2% most-cited scientists in the world.

李敬廉教授擁有豐富的教學經驗，在加入學院之前，他曾擔任香港教育大學（教大）教育與發展科學中心總監及幼兒教育學系系主任。

在此之前，他在新加坡南洋理工大學（Nanyang Technological University）國立教育學院（National Institute of Education），擔任多個領導職位，包括：教育及認知發展研究所研究主任及教育研究中心副院長。在擔任教育研究中心副院長期間，他主理學習科學研究，並協助教大成立幼兒發展研究中心。此外，他也曾擔任該校的教學與實踐研究中心主任，並在澳洲首間私立大學——邦德大學（Bond University）任職助理教授。

李教授在多本頂尖期刊上發表了大量文章，包括《教育心理學雜誌》（《Journal of Educational Psychology》）和《兒童發展》（《Child Development》）。此外，他是兒童發展研究協會（Society for Research in Child Development）、歐洲學習與教學研究協會（European Association for Research in Learning and Instruction）及數學認知與學習協會（Mathematical Cognition and Learning Society）的成員。他還擔任《學習與個體差異》（《Learning and Individual Differences》）的副主編，並在多本學術期刊中擔任編輯或評審委員會成員。

李教授在澳洲悉尼大學（University of Sydney）取得學士學位，並在澳洲麥覺理大學（Macquarie University）獲博士學位。他是一位認知發展心理學家，其研究工作主要集中在數學學習成就、工作記憶及執行功能的發展方面。

過去數年，李教授多次被史丹福大學列入全球被引用次數最多的前 2% 的科學家名單中。



Professor Eric Cheng
鄭志強教授

Vice-President (Academic)

副校長 (學術)

PhD, The University of Leicester
MSc, The Hong Kong Polytechnic University
MSS, The Chinese University of Hong Kong

萊斯特大學教育管理教育博士
香港理工學院研究生
香港中文大學社會科學研究生



Dr Frank Lam
林文全博士

Vice-President (Administration)

副校長 (行政)

DBA, The University of Newcastle
MBA, The University of Sydney
BSc, The Chinese University of Hong Kong

紐卡素大學工商管理博士
悉尼大學工商管理碩士
中文大學學士



Dr Crystal Zheng Wanwei
鄭婉薇博士

Assistant Professor
Dean of Studies

助理教授
學務長

PhD, Middlesex University
MA, The Hong Kong Polytechnic University
BA, Guangzhou University

英國密德薩斯大學博士
香港理工大學碩士
廣州大學學士



Dr Liu Qing
劉晴博士

Assistant Professor
Assistant Dean of Studies

助理教授
助理學務長

PhD, The University of Hong Kong
MA, Tufts University
BMed, Sun Yat-Sen University

香港大學博士
美國塔夫茲大學碩士
中山大學學士



Professor Shi Ping
時萍教授

Professor
Director (Chor Hang Educational
Research Institute)

教授
楚珩教育研究所所長

B.A., Nanjing Normal University

南京師範大學學士 (學前教育)
專業



Dr Hui Ching
許楨博士

Director, Mengxue Institute

中華蒙學苑苑長

PhD, Centre of Asian Studies, The University of
Hong Kong
MSc in Social Sciences, London School of
Economics and Political Science
MPhil, BA, The University of Hong Kong

香港大學亞洲研究中心博士
倫敦政經學院社會科學碩士
香港大學文學院學士、碩士



Dr Brad Chan
陳裕榮博士

Assistant Professor
Co-leader, Jockey Club 'CoolPlay'
Project

助理教授
項目聯席總監 (賽馬會「智·
幼·趣」計劃)

DPhil, The University of Oxford
MSc, The University of Oxford
BEd, The University of Hong Kong

英國牛津大學博士
英國牛津大學碩士
香港大學學士



Dr Phoebe Cheung
張蓓蓓博士

Assistant Professor

助理教授

PhD, Monash University
MA, University of Southern California
BSc OT, University of Toronto
OT @, SIPT Cert.

澳洲蒙納殊大學博士
美國南加州大學碩士
加拿大多倫多大學學士
OT @, SIPT Cert.



Dr Elaine Lau
劉綺雯博士

Assistant Professor

助理教授

PhD, The University of Hawai'i at Mānoa
Advanced Graduate Certificate in Second Language
Studies, The University of Hawai'i at Mānoa
MPhil, The University of Hong Kong
Bachelor in Cognitive Science, The University of
Hong Kong

夏威夷大學馬諾阿分校
語言學博士
夏威夷大學馬諾阿分校第二語言研
究高級研究生證書
香港大學語言學碩士
香港大學認知科學學士



Dr Serena Mengran Liu
劉萌然博士

Assistant Professor

助理教授

PhD, University of Auckland
HDECE, Yew Chung College of Early Childhood
Education
MS, Pennsylvania State University
BA, Southern Medical University

奧克蘭大學（紐西蘭）博士
耀中幼教學院幼兒教育高級文憑
賓夕法尼亞州立大學碩士
南方醫學大學學士



Dr Carly Ng
吳嘉儀博士

Assistant Professor

助理教授

Programme Manager (Bachelor of
Education (Hons) in Early Childhood
Education)

課程主任（幼兒教育榮譽
學士）

EdD, The Chinese University of Hong Kong
MEd, Baptist University of Hong Kong
BEEd, University of South Australia

香港中文大學教育博士
香港浸會大學教育碩士
南澳大學教育學士



Dr Ana Aracelly Olguín
Ana Aracelly Olguín 博士

Assistant Professor

助理教授

PhD, Curriculum & Instruction, University of Illinois
Urbana Champaign
EdS, University of Florida
MS, Nova Southeastern University
BA, Florida International University

美國伊利諾大學香檳分校博士
美國佛羅裡達大學學士
美國諾瓦東南大學碩士
美國佛羅裡達國際大學學士



Dr Melinda Wang Xuan
王炫博士

Assistant Professor

助理教授

Common Core Curriculum Manager

共同核心課程主任

PhD, City University of Hong Kong
MA, City University of Hong Kong
BA, Hebei Finance University

香港城市大學博士
香港城市大學碩士
河北金融學院學士



Dr Zhang Ye
張擘博士

Assistant Professor

助理教授

PhD, The University of Auckland
MA, The Chinese University of Hong Kong
BEEd, Zhejiang Normal University

奧克蘭大學哲學博士
香港中文大學教育學碩士
浙江師範大學教育學學士



Ms Mary Ann Hood

Senior Lecturer 高級講師

MEd, University of Fort Hare 福特哈爾大學教育碩士
BA (Hons) in Psychology, Rhodes University 羅德斯大學學士
BA, University of South Africa 南非大學學士



**Dr Bradley Mellen
Bradley Mellen 博士**

Senior Lecturer 高級講師
Pastoral Coordinator 成長關顧主任

EdD, University of Durham 杜倫大學博士
M.A., The University of Hong Kong 香港大學碩士
BA, University of Colorado 科羅拉多大學學士



Ms Miriam Shah

Senior Lecturer 高級講師
Deputy Director of PPDS 耀學園副主席

MA, University College London 倫敦大學學院碩士
PGCE, University of Bolton 博爾頓大學學位教師教育證書
BA, Leeds Metropolitan University 利茲都會大學學士



**Ms Nancy Ting
丁鏽楓女士**

Senior Lecturer 高級講師
Co-Director, HKJC 'Spark & Spot' Project 賽馬會「點亮·亮點」計劃聯席總監

MEd, University of Sydney 澳洲雪梨大學碩士
PGDE, The University of Hong Kong 香港大學學位教師教育證書
BA, The University of Hong Kong 香港大學學士



**Dr Rohnii Tse
謝冠寶博士**

Senior Lecturer 高級講師
Co-Director, HKJC 'Spark & Spot' Project 賽馬會「點亮·亮點」計劃聯席總監

PhD, University College London 倫敦大學學院博士
Master of Speech Language 雪梨大學碩士
MSc, The University of Manchester 曼徹斯特大學學士



**Ms Esther Chong
莊涓嫻女士**

Lecturer 講師
Programme Manager (Higher Diploma in Early Childhood Education) 課程主任 (幼兒教育高級文憑)

MA, Cornerstone University 基石大學文學碩士
BSc, Great Lakes Christian College 五大湖基督教學院理學士



Ms Payal Mansukani

Lecturer 講師

MEd, The University of Hong Kong 香港大學碩士
BA, Middlesex University 英國密德薩斯大學學士



**Ms Carrie Ng
伍倩儂女士**

Lecturer 講師
Programme Manager (Diploma in Early Childhood Education and Care) 課程主任 (幼兒教育與照顧文憑)

MA, The University of Hong Kong 香港大學碩士
BA & BEd, The University of Hong Kong 香港大學教育學士



**Ms Penny Pan
潘瑞鋒女士**

Lecturer 講師

Master of Developmental and Educational Psychology, Capital Normal University 首都師範大學發展與教育心理學碩士
Bachelor of Psychology, Hubei University 湖北大學心理學學士
HDECE, Yew Chung College of Early Childhood Education 耀中幼教學院幼兒教育高級文憑



**Ms Ruoyu Wen
文若予女士**

Lecturer 講師
Programme Manager (Higher Diploma in Early Childhood Education) 課程主任 (幼兒教育高級文憑)

MA, Teachers College, Columbia University 哥倫比亞大學師範學院碩士
BA, China Foreign Affairs University 中國外交學院學士



**Ms Zhang Dandan
張丹丹女士**

Lecturer (Research) 講師 (研究)

BA, Henan University 河南大學學前教育專業學士
MA, Northeast Normal University 東北師範大學學前教育專業碩士



**Ms Ivy Li
李樂華女士**

Practicum Manager 實習統籌經理

MEd, The University of Hong Kong 香港大學教育碩士
BA, The University of Hong Kong 香港大學學士



Practicum 實習安排

BEdeCE students are offered 8-week Practicum and 8-week Advanced Practicum opportunities. It allows students to polish observation and hands-on skills in different Early Childhood Education Settings.

Students will have their Practicum in international preschools, local kindergartens and in special education settings. What's more unique is the practicum arrangement in Yew Chung International School which is exclusively offered to YCCECE students taking the ECE programmes.

幼兒教育榮譽學士課程設 8 星期基本實習及另設 8 星期高階實習，學生將會獲安排到不同幼稚園及幼教機構進行實習，從而培養他們觀察能力等的實務技巧，及增加他們的實戰經驗。

學生將先後到國際幼稚園、本地幼稚園及特殊教育機構進行實習，更可享受有獨家耀中國際學校的實習機會。



Field Experience & Overseas Exposure

幼教體驗及海外學習活動

What does it take to become a global practitioner in early childhood education? For YCCECE students, it means going beyond the classroom and experiencing different ECE approaches and cultures first-hand.

能成為幼兒教育國際專才？對於耀中幼教學院的學生來說，這意味著超越課堂，親身體驗不同的幼兒教育方法和文化。



Chengdu Research Exchange Programme
成都研究交流項目



Excel at PECERA2024 in Tokyo
參與東京 PECERA2024 會議



Exchange Tour to Fuji
Kindergarten, Tokyo
東京富士幼稚園交流團



Participation in Pacific Early Childhood Education Research Association (PECERA) Annual Conference
 參與太平洋區幼兒教育研究學會年度會議



University of Wollongong Exchange Programme with YCCECE
 澳洲伍倫貢大學訪香港與耀中幼教學院交流



YCCECE x YCYW Shanghai Study Tour
 YCCECE x YCYW 上海訪問團



Exchange Tour to Deakin University, Australia
 澳洲迪肯大學交流團

Unique Experiential Learning

獨特體驗式學習



Pamela Peck Discovery Space (PPDS) is a specialist play space on campus, designed for children and families from birth to eight, aiming to actively promote innovative best practices in ECE.

Apart from providing experiential learning opportunities for local families and ECE professionals, PPDS serves as a "experiential living lab" in supporting teaching and learning. All BEdeECE students are required to complete enrichment activities with a total of 21 hours, as a form of community and professional learning. These activities deepen students' understanding of the importance of free-play, how play and learning are connected, and have a first-hand experience of what quality parent-teacher-child interactions are.

PPDS also functions a research lab for the faculty. Through the PPDS activities, our teaching staff can also gather pertinent data for teaching and research purposes.

耀學園專為初生至 8 歲的嬰幼兒及其家長而設，希望透過邀請社區參與，宣揚耀中多年來秉持的幼教理念。

除了為家庭和幼教從業員提供體驗式學習機會外，耀學園還充當支持教學和學習的「生活實驗室」。所有就讀學士課程的學生都必須完成總共 21 小時的訓練，作為認識社區和專業學習的一環。這些活動加深了學生對「遊戲中學習」自由玩耍的重要性、玩耍和學習如何聯繫的理解。

Partnership and Collaboration 合作伙伴

Yew Chung College of Early Childhood Education actively exchanges and collaborates with the Mainland and international early childhood education academia and related institutions to promote the development of early childhood education and seize opportunities, providing opportunities for students and teachers to learn and develop and keep pace with the times.

耀中幼教學院與內地及國際幼教學術界及相關機構積極交流和合作，促進幼教發展及抓緊機遇，為學生及教學人員提供機會學習及發展機會，與時並進。

LOCAL INSTITUTIONS	本地機構
Hong Kong Paediatric Foundation	香港兒科基金
Lingnan University	嶺南大學
OVERSEAS INSTITUTIONS	海外機構
Deakin University Australia	澳洲迪肯大學
Beijing Normal University,Zhuhai	北京師範大學珠海校區
Fujian Normal University	福建師範大學
Guangdong Food And Drug Vocational College	廣東食品藥品職業學院
Guangdong Teachers College of Foreign Languages and Arts	廣東省外語藝術職業學校
Guangdong University of Education	廣東第二師範學院
Guangdong University of Foreign Studies	廣東外語外貿大學
HangZhou Polytechnic	杭州科技職業技術學院
Henan University	河南大學
Heyuan Polytechnic	河源職業技術學院
Hubei Preschool Teachers College	湖北幼兒高等專科師範學校
Jiangmen Preschool Education College	廣東江門幼兒師範高等專科學校
Jiangsu Second Normal University	江蘇第二師範學院
NanJing XiaoZhuang University	南京曉莊學院
Nantong University	南通大學
Ningbo Childhood Education College	寧波幼兒師範高等專科學校
Rainbow Fish Rehabilitation & Nursing School	彩虹魚康復護理學院
Sanda University	上海杉達學院
Shanghai Donghai Vocational and Technical College	上海東海職業技術學院
Shanghai Normal University	上海師範大學
Shenzhen Polytechnic University	深圳職業技術大學
Shenzhen University	深圳大學
Sichuan Changjiang Vocational College	四川長江職業學院
Sino-German Applied Technology School of the West Coast New Area	青島西海岸新區中德應用技術學校
South China Normal University	華南師範大學
Suzhou Early Childhood Education College	蘇州幼兒師範高等專科學校
Urban Construction College of Guangzhou University	廣州城建職業學院
Xuzhou Kindergarten Teachers College	徐州幼兒師範高等專科學校
Zhaoqing Agriculture School	肇慶農業學院
Zhejiang Shuren University	浙江樹人學院
Zhoushan Technician College	舟山職業技術學院

Yew Chung Yew Wah Teachers of Tomorrow Scheme

耀中耀華明師計劃



Under our unique Yew Chung Yew Wah Teachers of Tomorrow Scheme (TOT), BEdeCE and HDECE graduates can enjoy an exclusive employment opportunity at Yew Chung International Schools in Hong Kong or Mainland China. Students who have excelled academically can apply, and the employment duration is typically one-year, giving them the best start to their careers.

耀中教育機構特意設立「耀中耀華明師計劃」，為幼兒教育榮譽學士及高級文憑畢業生提供獨一無二的機會開創事業先機，讓這些表現優秀且成功通過甄選的畢業生於香港或內地耀中、耀華幼稚園工作至少一年。

I am thrilled to be part of the Teachers of Tomorrow Scheme at Yew Chung International School of Shanghai (Puxi).

As a new teacher, I have encountered some challenges. While setting up my classroom and planning lessons for my students can be somewhat stressful, the guidance from the colleagues in the Teachers of Tomorrow Scheme has been incredibly helpful in addressing my various questions and concerns.

I truly appreciate this scheme, which has not only enriched my teaching journey but also allowed me to grow continuously as an educator.

我很高興能透過「耀中耀華明師計劃」，成為上海耀中浦西校區的一員分。

作為一名新教師，雖然設置教室和為學生規劃課程讓我感到一些壓力，但「耀中耀華明師計劃」的聯席老師們所提供的指導，幫助我有效地解決了各種問題和疑慮。

我感謝這個計劃，它不但豐富了我的教學旅程，還讓我在教育者的道路上不斷成長。



Wong Yuet Ka
黃玥珈

2024 BEdECE Graduate
2024 幼兒教育榮譽學士畢業生

I am deeply grateful for Teachers of Tomorrow Scheme as it gave me the opportunity to work at Hong Kong Yew Chung International Kindergarten. This experience allowed me to explore the world of play-based and child-led learning, enriching my knowledge and inspiring new ideas in my teaching. It has profoundly impacted my career.

I also feel incredibly fortunate to have such supportive colleagues and principals. I look forward to applying everything I have learned in practice and continuing to grow in the field of early childhood education.

我非常感激「耀中耀華明師計劃」因為它讓我有機會在香港耀中國際幼稚園工作。這段經歷使我深入了解「遊戲中學習」和以孩子為主導的學習世界，不僅豐富了我的知識，還啟發了我在教育上的新思維，對我的職業生涯產生了深遠的影響。

同時，我感到非常幸運，能擁有如此多支持我的同事和校長。我期待將所學應用於實踐，並在幼兒教育領域不斷成長。



Kaur Harmanjit Harman

2024 BEdECE Graduate
2024 幼兒教育榮譽學士畢業生

Research and Community Support

研究項目及社區支援

YCCECE is making an impact on the most fast-moving and challenging early childhood education trend in Hong Kong. Actively interact with professional parties, the Research Office is thrived to closely collaborate and have exchange connection with the government and industry leaders to facilitate in-depth research that contribute to ECE in Hong Kong.

The College utilizes both public and private-sector fundings appropriately for every type of project. As a pioneer and the very first and only specialist higher education institution in Asia, it shares the latest research findings and provide support for the operation of lectures and conferences for the general public.

耀中幼教學院一直致力以研究成果與獨特的灼見激發教育之旅或為社會帶來貢獻。學院的在校研究項目得到非政府機構的支持與資助，由學院的世界知名幼教專家領導，融匯堅實的專業知識與豐富的經驗，受到廣泛認同的研究往往為幼兒教育提供切實可行的改進方案。



Jockey Club 'CoolPlay' Project

The three-year Jockey Club 'CoolPlay' Project, funded by the Hong Kong Jockey Club Charities Trust and co-organised by Yew Chung College of Early Childhood Education (YCCECE) and the Vocational Training Council (VTC), has offered child-centric teaching resource kits, training and support to local early childhood educators and parents. Three notable achievements have been attained, namely, developing Hong Kong's first three-in-one exploration kit JumpStarter (bilingual story books, a teachers' guide and a parents' guide), training the first batch of Exploratory Learning seed teachers, nurturing parents with exploration mindset through the popular Discovery Space visits, and establishing Hong Kong's first Home-School-Community network setting the benchmark for Exploratory Learning. Notably, the JumpStarter Series has garnered significant honours in two major international competitions, namely International Invention Innovation Competition in Canada (iCAN) 2023 and 2023 International Innovation & Invention Competition (IIC).

Phase 2 of the project officially launched in 2023, with continued funding from The Hong Kong Jockey Club Charities Trust for this four-year initiative. Co-organized by YCCECE and Hong Kong Christian Service, this phase will uphold a 'Child-Centered' philosophy and expand its reach to seven grassroots communities. It will provide sustained and comprehensive educational support and resources for kindergarten teachers and parents in these areas, working together to create an environment that encourages children to explore. By stimulating their curiosity and learning interest, the program aims to develop essential 21st-century skills such as creativity, communication, and collaboration. This phase is expected to benefit 414 schools, 239 principals, 1,423 practising teachers, and over 55,000 children and their families.

賽馬會「智·幼·趣」計劃

由香港賽馬會慈善信託基金捐助，耀中幼教學院聯同職業訓練局 (VTC) 共同主辦為期三年的幼兒教育項目－賽馬會「智·幼·趣」計劃第一階段於 2020 年起開展，一直為本地教育者及家長提供適合幼兒的教學資源、培訓及支援，並建構穩健的「家校社網絡」，讓他們能夠充分掌握相關知識和教學技巧，引導幼兒從校內以及日常生活中進行各種「探索式學習」。

透過各種針對不同對象的培訓或活動，賽馬會「智·幼·趣」計劃第一階段取得了三大成果，分別開發全港首套三合一「探索式學習」教學資源－JumpStarter (雙語兒童故事書、教師指南及家長指南)、訓練全港首批「探索式學習」的種子老師、以及推出廣受家長歡迎的〈耀學園親子之旅〉。這些成果促進了「家、社、校」三方合作，共同推動本地幼兒教育發展。值得一提的是，JumpStarter 系列更在兩項國際比賽中榮獲殊榮，包括 2023 年加拿大國際發明及創新比賽 (iCAN) 和 2023 年國際創新發明競賽 (IIC)。

計劃第二階段已於 2023 年正式啟動，並獲得香港賽馬會慈善信託基金的持續捐助，支持為期四年的計劃。此計劃由耀中幼教學院與香港基督教服務處共同合作推行。第二階段將秉持「兒童為本」的理念，進一步擴展至七個基層社區，為區內的幼稚園教師及家長提供持續且全方位的教學支援與資源，攜手打造一個鼓勵幼兒探索的社區環境。透過激發孩子的好奇心與學習興趣，計劃旨在培養他們的創意、溝通及合作等 21 世紀關鍵技能。預計此計劃將惠及 414 所學校、239 名校長、1434 名在職教師、超過 55,000 名幼兒及其家庭。



Jockey Club ‘Bright Start’ Project

The Jockey Club ‘Bright Start’ Project is a three-year pilot project organised by the Hong Kong Christian Services (HKCS) and driven by Yew Chung College of Early Childhood Education (YCCECE). Supported by The Hong Kong Jockey Club Charities Trust, the Project aims to develop a high-quality Educare model for child-care centres by providing holistic support to both child care workers and parents. The Project works collaboratively with six other partnering organisations with various expertise who share the same vision.

Jockey Club ‘Spark & Spot’ Project

The Jockey Club ‘Spark & Spot’ Project, funded by The Hong Kong Jockey Club Charities Trust and organised by Yew Chung College of Early Childhood Education (YCCECE), spans across 46 months from 2024 to 2027, focusing on the theme ‘Enriching Education, Empowering Diversity’. The Project aims to equip local kindergartens and nursery schools to optimise inclusive teaching practices and embrace learner diversity through professional development, coaching and environment enhancement. It builds a community of practice to foster early childhood educators’ self-efficacy in creating an inclusive learning environment to bring about a long-lasting learner-centric change in early childhood education. The Project will benefit around 90 kindergartens and nursery schools, 340 teachers and 160 administrators including school principals and head teachers.

Other featured research projects of the College

- HKJC Inclusive Quality (IQ) Preschool Project
- Research on the effectiveness of a newly developed Quality Service Model for Early Years (CRH)
- CLP Education Fund
- From Assignment to Published Work: Documenting the Process of Story-Making
- Kindergarten English Enhancement (KEEP) Programme
- Exploring Innovative Pedagogical Practices in Early Childhood Education Teacher Education
- Academic Consultation Service for Hong Chi Association Occupational Therapy Unit (Adult Services)

賽馬會幼兒「喜步」計劃

賽馬會幼兒「喜步」計劃是一個為期三年的先導項目，由香港基督教服務處 (HKCS) 組織，耀中幼教學院 (YCCECE) 推行。項目由香港賽馬會慈善信託基金捐助，全面支援幼兒工作者和嬰幼兒家長，並為幼兒中心開發高質量的教育模式。耀中幼教學院與其他六個抱著相同理念的跨專業團隊合作，致力達致「教顧合一」的願景。

賽馬會「點亮·亮點」計劃

賽馬會「點亮·亮點」計劃獲賽馬會慈善信託基金捐助約 6000 萬，由耀中幼教學院主辦這個為期 46 個月 (2024-2027 年) 針對提升幼稚園處理多元教學需要的手法與方案。

計劃以「拉闊教育 擁抱共融」為理念，透過教職員專業培訓、校本教學指導，以及兼顧多元感官學習需要的全納校園環境設計，幫助本地幼稚園及幼兒學校推動能照顧多樣性學習需要的教學，實踐共融理念。同時，通過建立實踐社群提昇學前教育工作者對創建共融學習環境的自我效能感，促進幼兒教育界實踐以學生為本的長遠及可持續教學理念。計劃將惠及 90 多間幼稚園和幼兒學校，約 340 名幼師和 160 名校長、主任等管理層人員。

學院其他特色研究項目

- 賽馬會幼兒融合教育研究計劃
- 開發的早期教育優質服務模型的有效性研究
- 中電教育基金
- 從作業到發表作品：記錄故事製作過程
- 幼稚園教語教與學提昇專業發展計劃
- 探索幼兒教育教師教育的創新教學實踐
- 匡智會職業治療組學術諮詢服務 (成人服務)





Mengxue, or Chinese formative education, has been a source of enlightenment for millennia. Thanks to the flourishing literary culture of the time, the abundance and substance of the Mengxue classics from the Song to the Ming dynasties are particularly remarkable. The texts not only emphasise ethics and reasoning, but also embody the Chinese people's pursuit and imagination of a fulfilling life, an ideal society and a universal world. If the essence thereof can be extracted, it will broaden the horizons of the present-day kindergarten, primary and secondary school students; at the same time, it will facilitate the connection and interaction between teachers and students, as well as parents, making it a very effective supplement and extension to the existing basic education in the broad sense.

As early as 2019, the internal deliberations and discussions on the revival of "Mengxue" began within the Yew Chung Yew Wah Education Foundation. Subsequently, following a year-long preparation, the Yew Chung College of Early Childhood Education (YCCECE) - Mengxue Institute was officially established on the 90th anniversary of Yew Chung Yew Wah (October 14, 2022).

蒙學，即千百年來中國人啟蒙之學；由於其時文風鼎盛，從宋代到明代留下的蒙學經典，數量尤其多、內容尤其豐富。蒙學典籍不只重人倫、明事理；同時，也沈澱了中國人對於美好人生、理想社會、大同世界的追求與想像。如能萃取其菁華，便能拓寬現時幼、小、中學生之視野；同時，亦能促進師生、家長之間的聯繫與互動；成為眼前廣義基礎教育，非常有效的補充與擴展。

早於 2019 年，耀中耀華教育機構內部，便已開展復興「中華蒙學」的思考與討論。及後，經過近一年籌備——耀中幼教學院·中華蒙學苑，於「創校九十周年紀念日」（2022 年 10 月 14 日）正式宣告成立。

Student Support Services 學生支援服務



Chinese and English Language Learning

- Intensive preparation courses
- English / Chinese language support
- One-on-one coaching
- Online learning resources

中英語言學習

- 語言強化課程
- 英文 / 中文語言學習
- 一對一輔導
- 網上學習資源

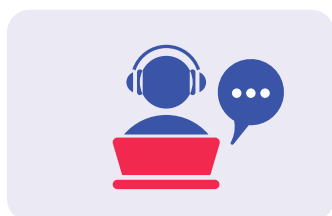


Community Services

- Personal development programmes

社區服務

- 個人發展計劃



Academic Enrichment

- Academic workshops
- One-on-one personal tutor
- One-on-one coaching
- Online learning resources

學業支援

- 學習工作坊
- 一對一私人導師
- 一對一輔導
- 網上學習資源



Faith

- On-campus prayers' room
- Cultural support services

信仰

- 祈禱室
- 文化支持服務

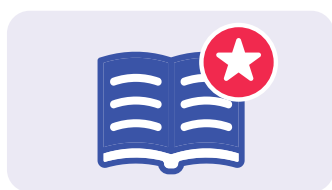


Financial Wellbeing

- Extensive scholarship schemes
- Bursaries for students in need
- Overseas exchange grants

財務支援

- 廣泛的獎學金計劃
- 為有需要的學生提供助學金
- 海外交流資助

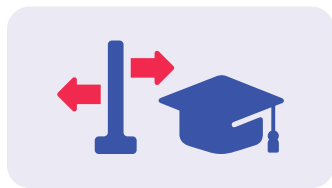


Student Association and Student Clubs

- Leadership skills development
- Peer mentoring

學生會和學生興趣小組

- 領導技能發展
- 友伴指導計劃



Career

- Career advice and development
- Employability skill workshops

就業

- 職業輔導和發展
- 就業技能研討會



Mental Health

- Mental health support courses
- Workshops for success

精神健康

- 精神健康課程
- 正向研討會

Yew Chung Approach to Early Childhood Education

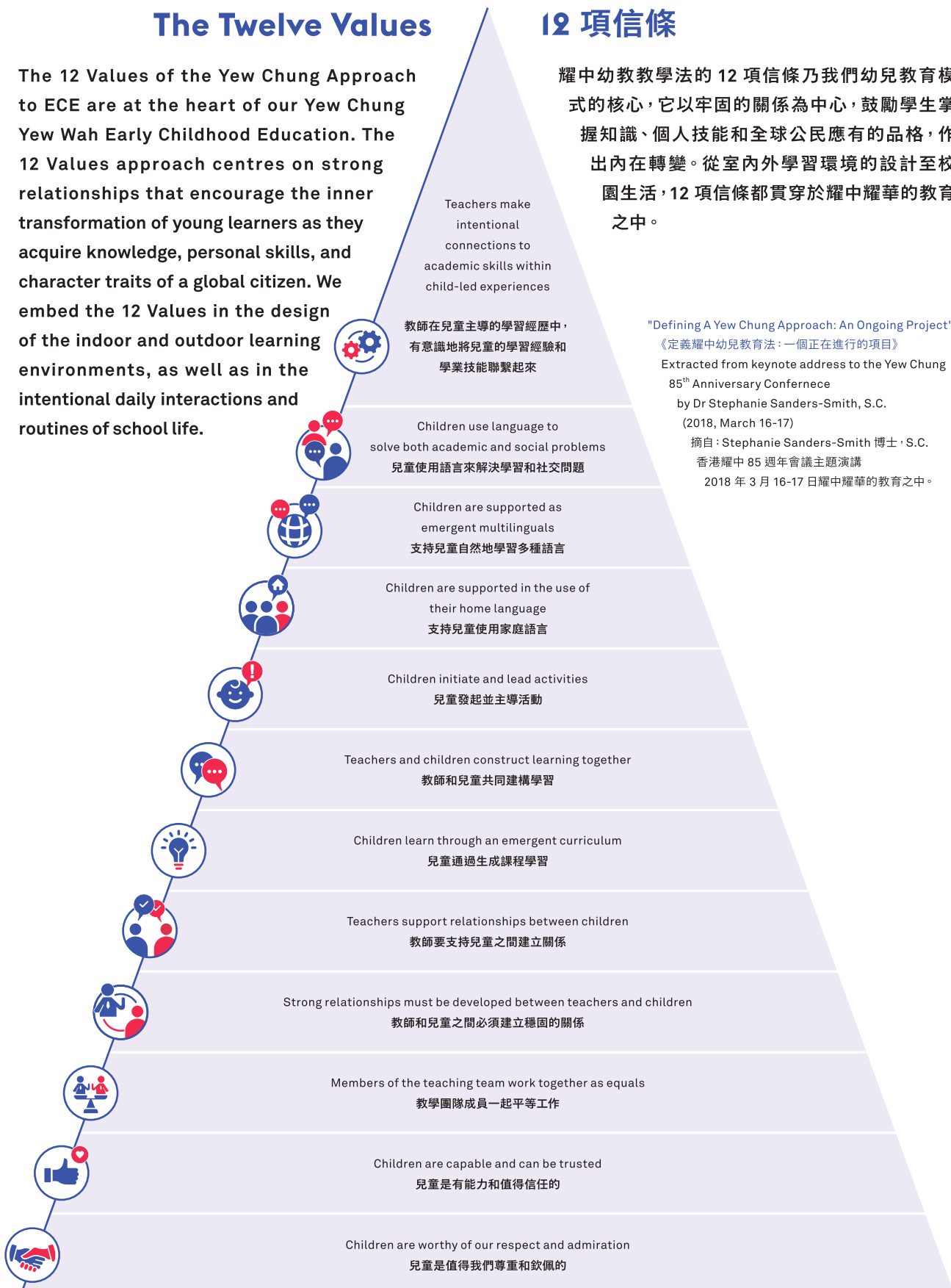
耀中幼教教學法

The Twelve Values

The 12 Values of the Yew Chung Approach to ECE are at the heart of our Yew Chung Yew Wah Early Childhood Education. The 12 Values approach centres on strong relationships that encourage the inner transformation of young learners as they acquire knowledge, personal skills, and character traits of a global citizen. We embed the 12 Values in the design of the indoor and outdoor learning environments, as well as in the intentional daily interactions and routines of school life.

12 項信條

耀中幼教教學法的 12 項信條乃我們幼兒教育模式的核心，它以牢固的關係為中心，鼓勵學生掌握知識、個人技能和全球公民應有的品格，作出內在轉變。從室內外學習環境的設計至校園生活，12 項信條都貫穿於耀中耀華的教育之中。



"Defining A Yew Chung Approach: An Ongoing Project"
《定義耀中幼兒教育法：一個正在進行的項目》

Extracted from keynote address to the Yew Chung 85th Anniversary Conference

by Dr Stephanie Sanders-Smith, S.C.

(2018, March 16-17)

摘自：Stephanie Sanders-Smith 博士 · S.C.

香港耀中 85 週年會議主題演講

2018 年 3 月 16-17 日耀中耀華的教育之中。

Scholarships and Awards for Admissions

入學獎學金及獎項

2024/25 學年之入學獎學金及獎項

\$29,663

average scholarship /
award amount for each new student
每名新生的平均入學獎學金 / 獎項金額為 \$29,663

\$35,120

NMTSS for 2025/26 from the Government of
Hong Kong for BEECE programme
2025/26 學年，香港政府為學士課程提供的
最高免入息審查資助為 \$35,120

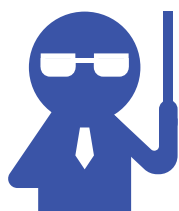
82%

students awarded with scholarships /
awards for admissions
82% 學生獲得入學獎學金 / 獎項

10+

scholarships and award
schemes for admissions
超過 10 個入學獎學金及獎項計劃

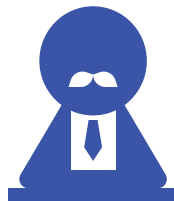
Career Path 就業晉升階梯



Teacher 教師
Starting Salary 起薪
\$25,060-\$44,570



Head Teacher 主任
Salary Range 薪資
\$33,430-\$52,940



Vice-Principal 副校長
Salary Range 薪資
\$41,780-\$58,500



Principal 校長
Salary Range 薪資
\$47,370-\$73,840

Starting Salary
幼教起薪點

HK\$25,060

(AY2024/25) (2024/25 學年)

*Other Career Opportunities

其他就業可能性：

Publisher

出版機構

Government or Non-governmental
Organisations for children

兒童服務相關之政府或
非政府組織

Teaching centre

教育中心

How to Apply 入學申請程序

1

Complete Application

遞交申請



- Apply via <https://apply.yccece.edu.hk/>
- Create a new account for submitting application.
- Applicants are required to settle the non-fundable application fee.
- 瀏覽 <https://apply.yccece.edu.hk/>
- 建立新帳戶以遞交申請。
- 申請人須繳交報名費，取錄與否概不退還。

2

Interview Arrangements

面試安排



- Applications will be invited to attend and admission interview.
- Upon passing the admission interview, applicants will receive a conditional or confirmed offer.
- 學院將聯絡申請人安排入學面試。
- 如申請人通過面試，將收到有條件／確認取錄。

3

Offer Acceptance

確認學位

- Applicants are required to –
- Submit supporting documents (if any)
 - Complete the registration procedures
 - Settle the registration fee
- 申請人必須 –
- 遞交證明文件（如有）
 - 完成註冊文件
 - 支付註冊費

Scan QR code for
more details

掃描二維碼了解更多



English



中文

For admissions enquiry,
please contact YCCECE Admissions Office

如有任何查詢，請聯絡學院招生部



(852) 3977 9877



admissions@yccece.edu.hk



(852) 9312 0733

Tuition fee 學費

BEdeCE 幼兒教育榮譽學士

Year 1 Entry · 4-Year Full-Time 一年級入學 · 四年全日制

	Tuition Fee [^] 學費 [^]	After deducting NMTSS* 扣除 NMTSS 後學費*
Year 1 一年級	\$95,420	\$60,300
Year 2 二年級	\$95,420	\$60,300
Year 3 三年級	\$107,340	\$72,220
Year 4 四年級	\$107,340	\$72,220

Year 3 Entry · 2-Year Full-Time 三年級入學 · 兩年全日制

	Tuition Fee [^] 學費 [^]	After deducting NMTSS* 扣除 NMTSS 後學費*
Year 3 三年級	\$101,380	\$66,260
Year 4 四年級	\$101,380	\$66,260

Year 3 Entry · 4-Year Part-Time 三年級入學 · 四年兼讀制

	Tuition Fee [^] 學費 [^]
Year 3 (First year) 三年級 (第一年)	\$50,690
Year 3 (Second year) 三年級 (第二年)	\$50,690
Year 4 (First year) 四年級 (第一年)	\$50,690
Year 4 (Second year) 四年級 (第二年)	\$50,690

HDECE 幼兒教育高級文憑

HDECE 幼兒教育高級文憑

	Tuition Fee 學費
Year 1 一年級	\$89,000
Year 2 二年級	\$92,000

DECEC 幼兒教育與照顧文憑

DECEC 幼兒教育與照顧文憑

	Tuition Fee 學費
Year 1 一年級	\$68,600

* Eligible students will receive subsidy amount of \$35,120 per year (2025/2026)
合資格學生每年可獲 \$35,120 學費資助 (2025/2026)

[^] There may be an annual adjustment of tuition fees which will be based on the actual Composite Consumer Price Index (CCPI) to be announced by the Government. The tuition fees for the BEdeCE Year 1 Entry and Year 3 Entry Full-Time programmes do not take the CCPI into account for the second to fourth year, i.e. 2026/27 to 2028/29 academic year.

[^] 每年學費的調整將會根據香港特別行政區政府公布之實際綜合消費物價指數 (CCPI) 而定。上列一年級入學和三年級入學全日制幼兒教育榮譽學士課程的學費並未包括第二 (2026 至 2027) 至第四 (2028 至 2029) 學年，因應實際綜合消費物價指數 (CCPI) 而可能作出的調整。



YEW CHUNG COLLEGE
OF EARLY CHILDHOOD
EDUCATION

耀中幼教學院

YEW CHUNG COLLEGE OF EARLY CHILDHOOD EDUCATION
耀中幼教學院

2 Tin Wan Hill Road, Tin Wan, Aberdeen, Hong Kong
香港香港仔田灣田灣山道二號

☎ (852) 3977 9877

📞 (852) 9312 0733

🏠 (852) 2338 4320

✉ admissions@yccece.edu.hk

www.yccece.edu.hk

YCCECE is a member of the Yew Chung Education Foundation (YCEF),
both are registered non-profit organisations in Hong Kong

耀中幼教學院為耀中教育機構成員，兩者均為香港註冊非牟利團體

2025/03