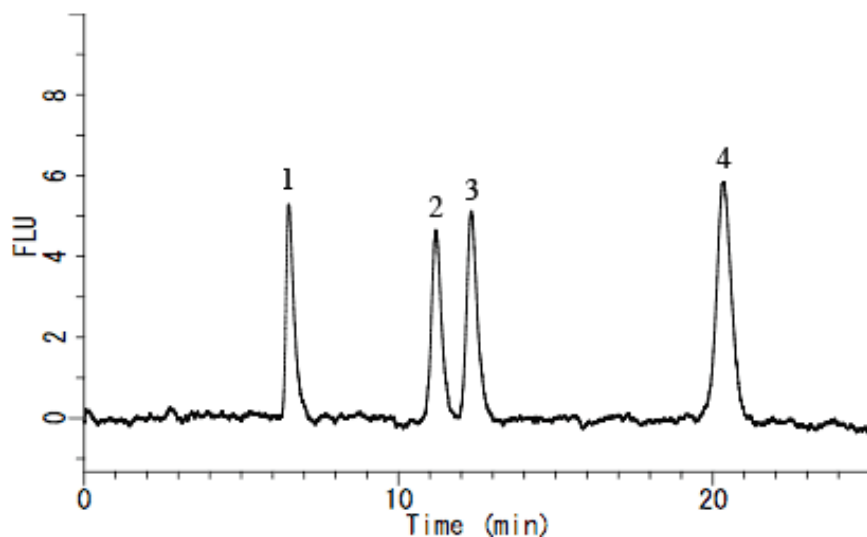


Analysis of Vitamin E in Food

Data No. LA505-0696



System	: GL-7400 system	Solutes	: 1. dl- α -tocopherol (25 μ g/L)
Column	: Inertsil NH2 (5 μ m, 250 \times 4.6 mm I.D.)		2. dl- β -tocopherol (25 μ g/L)
Column Cat. No. :			3. dl- γ -tocopherol (25 μ g/L)
Eluent	: A) CH ₃ COOH		4. dl- δ -tocopherol (25 μ g/L)
	B) 2-Propanol		
	C) Hexane		
	A/B/C = 5/6/1000, v/v		
Flow rate	: 1.2 mL/min.		
Col. Temp.	: 40 °C		
Detection	: FL Ex 298 nm Em 330 nm(GL-7453A FL Detector)		
Injection Vol.	: 20 μ L		
Sample	:		